

V&V Reference Report

L2 ASCDS Version : 10.3.1

Observation 16267 - L2 Version 1
Chandra X-Ray Center

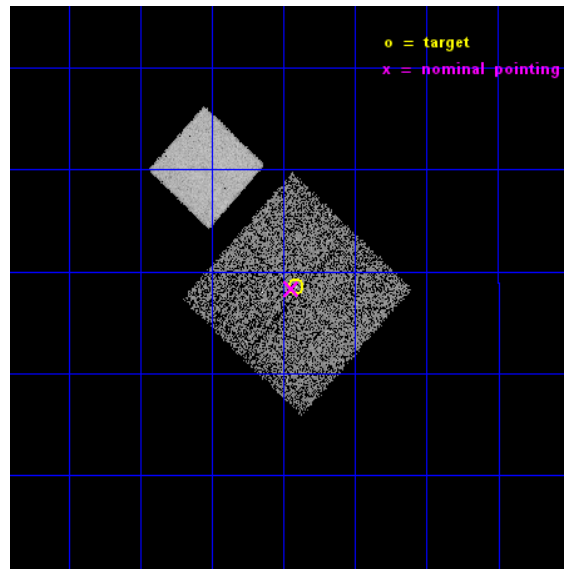
L2 Processing Date : Dec 6 2014

Contents

1	Front	2
2	OBI	3
2.1	OBI	3
2.1.1	Images	3
2.1.2	Bias	3
2.1.3	Parameters	4
2.1.4	Events	4
2.2	Compared Parameters	5
2.3	Aspect	6
2.4	Star Slots	9
2.4.1	Slot 3	9
2.4.2	Slot 4	10
2.4.3	Slot 5	11
2.4.4	Slot 6	12
2.4.5	Slot 7	13
2.5	FID Slots	14
2.5.1	Slot 0	14
2.5.2	Slot 1	15
2.5.3	Slot 2	16
A	Summary	17
A.1	Status	17
A.2	Comments	17

1 Front

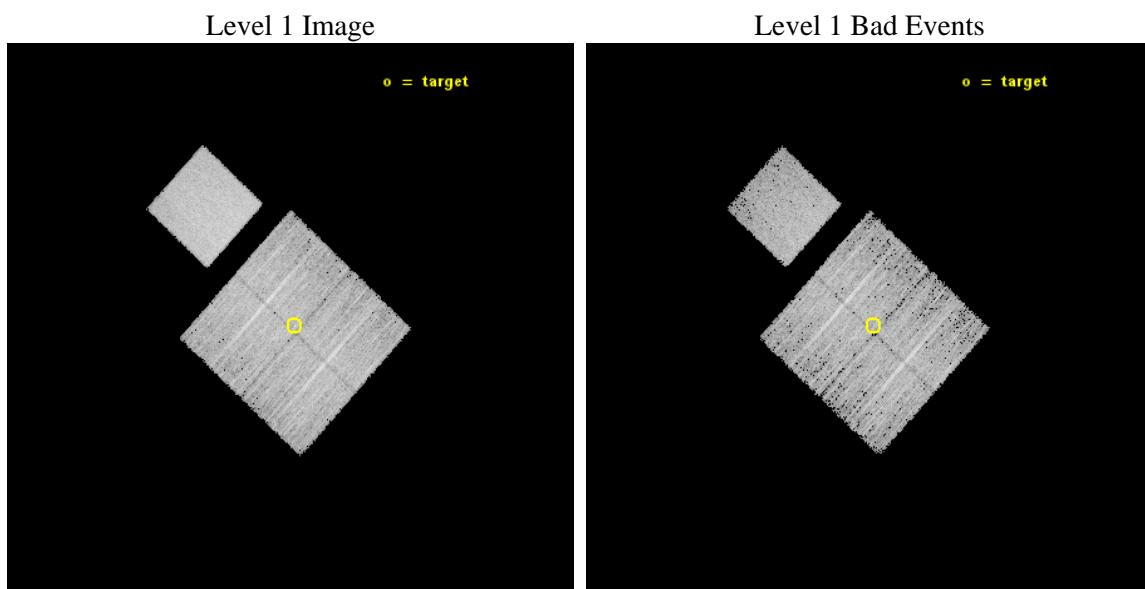
seq_num	703011	Sequence number
obs_id	16267	Observation id
title	X-ray Properties of Selected SDSS Stripe 82 Red Quasars	Proposal t
observer	Dr. Stephen Murray	Principal investigator
object	J030654.87+010833.7	Source name
dtcycle	0	
cycle	P	events from which exps? Prim/Second/Both
ra_targ	46.72875	Observer's specified target RA [deg]
dec_targ	1.142722	Observer's specified target Dec [deg]
ra_nom	46.735875298594	Nominal RA [deg]
dec_nom	1.1386239054081	Nominal Dec [deg]
roll_nom	312.68154143309	Nominal Roll [deg]
revision	1	Processing version of data
ontime	10068.800077438	Sum of GTIs [s]
livetime	9937.2437918838	Livetime [s]
ontime0	10068.800077438	Sum of GTIs [s]
ontime1	10068.800077438	Sum of GTIs [s]
ontime2	10068.800077438	Sum of GTIs [s]
ontime3	10068.800077438	Sum of GTIs [s]
ontime7	10068.800077438	Sum of GTIs [s]
l2events	45544	Number of level 2 events



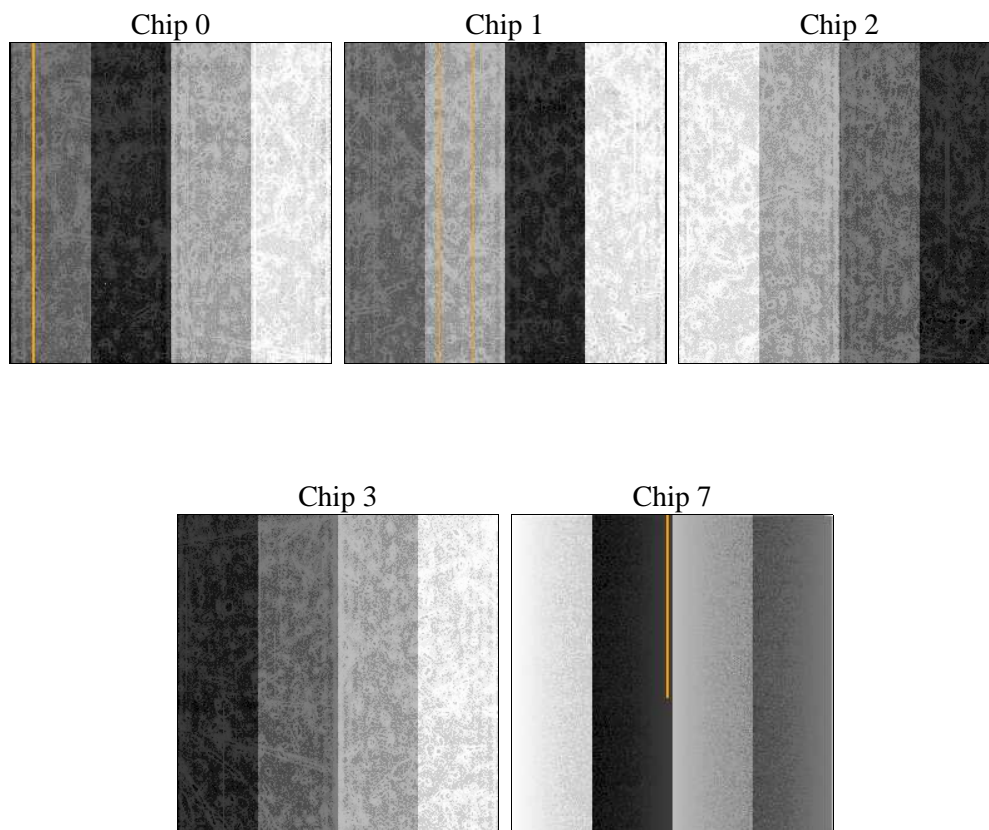
2 OBI

2.1 OBI

2.1.1 Images



2.1.2 Bias



2.1.3 Parameters

obi_num	0	Obi number	sched_exp_time	10000.000000	[s] Scheduled observation exposure time
ascdsver	10.3.1	Processing system revision	ontime	10068.800077438	Sum of GTIs [s]
caldsver	4.6.4	 	ontime0	10068.800077438	Sum of GTIs [s]
date	2014-12-06T22:25:37	Date and time of file creation	ontime1	10068.800077438	Sum of GTIs [s]
revision	1	Processing version of data	ontime2	10068.800077438	Sum of GTIs [s]
			ontime3	10068.800077438	Sum of GTIs [s]
			ontime7	10068.800077438	Sum of GTIs [s]
			l1events	247894	Number of level 1 events

2.1.4 Events

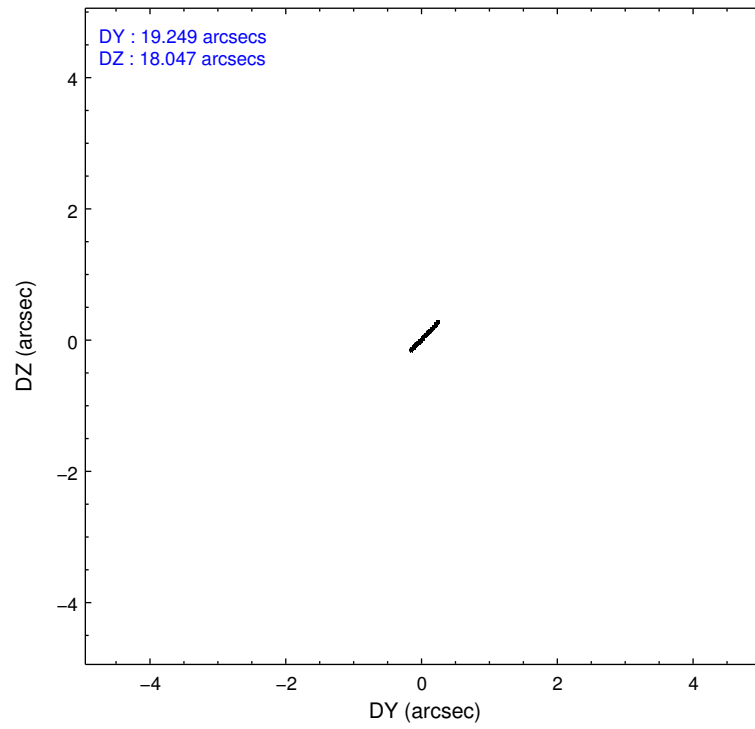
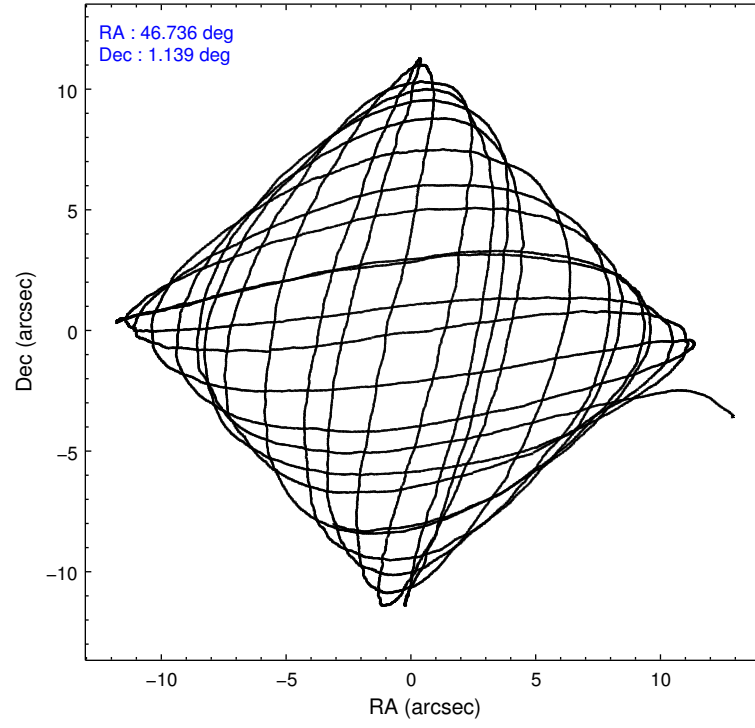
	ccd 0	ccd 1	ccd 2	ccd 3	ccd 7
level 1 events	44715	45027	47317	45347	65488
rejected events	39328	39235	42045	40136	37557
rejected %	87%	87%	88%	88%	57%

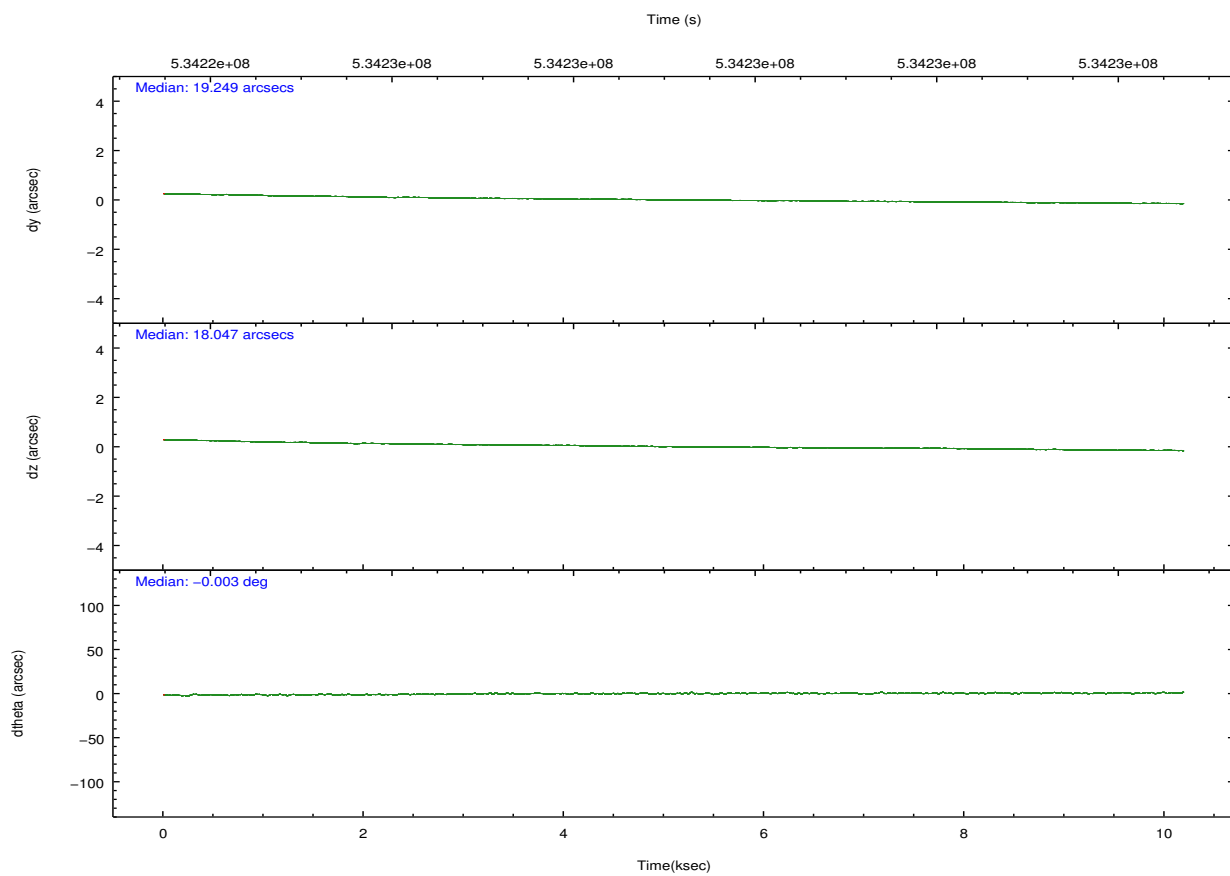
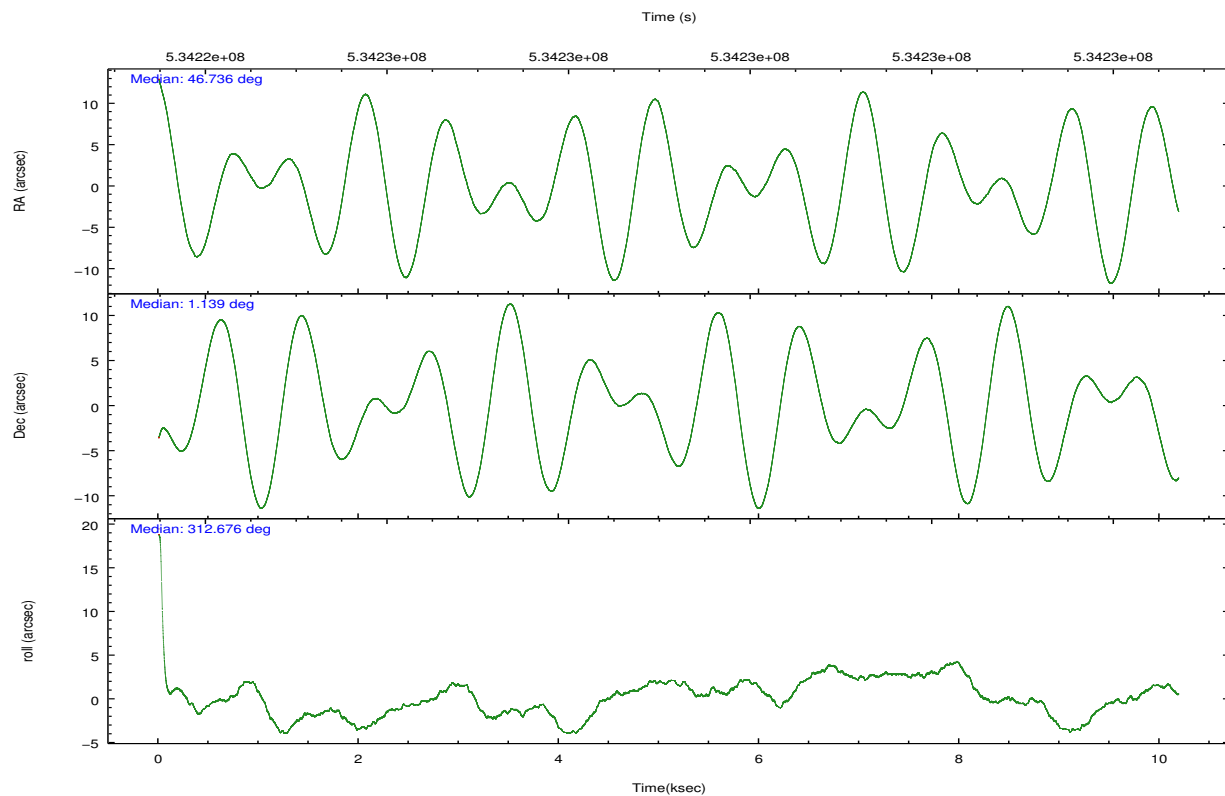
	ccd 0	ccd 1	ccd 2	ccd 3	ccd 7
grade 0 events	1806	1863	1884	1763	2224
	4%	4%	3%	3%	3%
grade 1 events	28	11	27	36	64
	0%	0%	0%	0%	0%
grade 2 events	1379	1383	1285	1141	5823
	3%	3%	2%	2%	8%
grade 3 events	531	571	572	583	2074
	1%	1%	1%	1%	3%
grade 4 events	522	593	534	563	2169
	1%	1%	1%	1%	3%
grade 5 events	2220	2293	2124	2510	6324
	4%	5%	4%	5%	9%
grade 6 events	1153	1382	999	1162	15653
	2%	3%	2%	2%	23%
grade 7 events	37076	36931	39892	37589	31157
	82%	82%	84%	82%	47%

2.2 Compared Parameters

Parameter	Planned	Actual	Parameter	Planned	Actual
Instrument	ACIS	ACIS	Obspar format version number	7	7
Detector	ACIS-01237	ACIS-01237	Obspar file type	PREDICTED	ACTUAL
Grating	NONE	NONE	Obspar update status	NONE	UPDATED
Data mode	FAINT	FAINT	CCD I0 on	Y	Y
Observation mode	POINTING	POINTING	CCD I1 on	Y	Y
[deg] Pointing RA	46.709460	46.73587529859422	CCD I2 on	Y	Y
[deg] Pointing Dec	1.146755	1.138623905408115	CCD I3 on	Y	Y
[deg] Pointing Roll	312.473359	312.6815414330893	CCD S0 on	N	N
[mm] SIM focus pos	-0.782348	-0.7809083437167272	CCD S1 on	N	N
[mm] SIM defocus	0	0.001439871863259334	CCD S2 on	N	N
[mm] SIM translation stage pos	-233.592463	-233.5874344608287	CCD S3 on	O1	Y
[mm] SIM translation stage offset	0	-0.005018542100998502	CCD S4 on	N	N
[s] Observation start time (MET)	534224198.184000	534223161.70238	CCD S5 on	N	N
Observation start date	2014-12-06T03:35:31	2014-12-06T03:19:21	Number of optional ACIS chips dropped	0	0
[s] Observation end time (MET)	534234198.184000	534235182.90305	On-chip summing requested	N	N
Observation end date	2014-12-06T06:22:11	2014-12-06T06:39:42	Subarray requested	NONE	NONE
Read mode	TIMED	TIMED	Alternating exposures requested	N	N
			[s] Primary exposure time	0.000000	3.1

2.3 Aspect



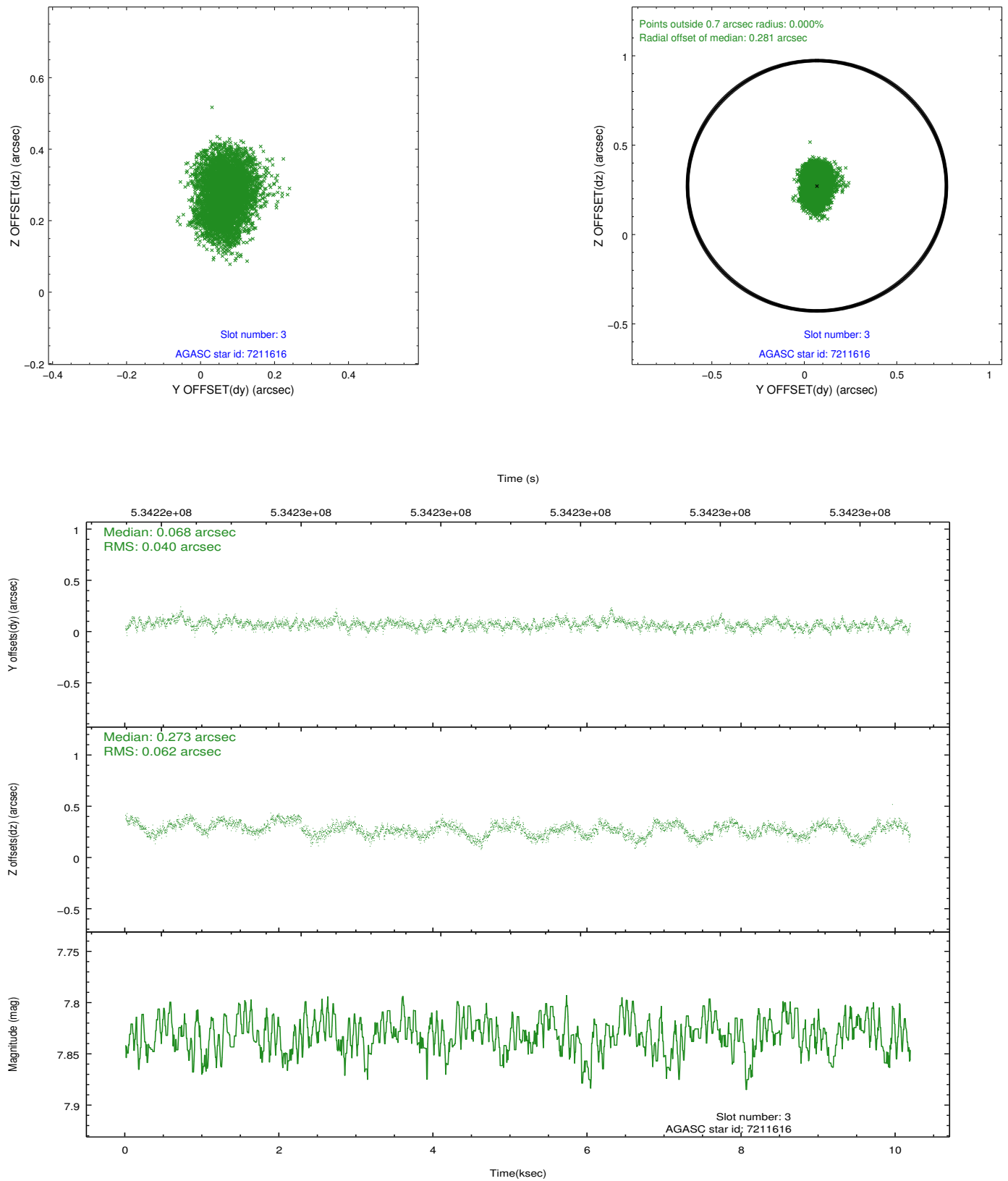


Slot Statistics

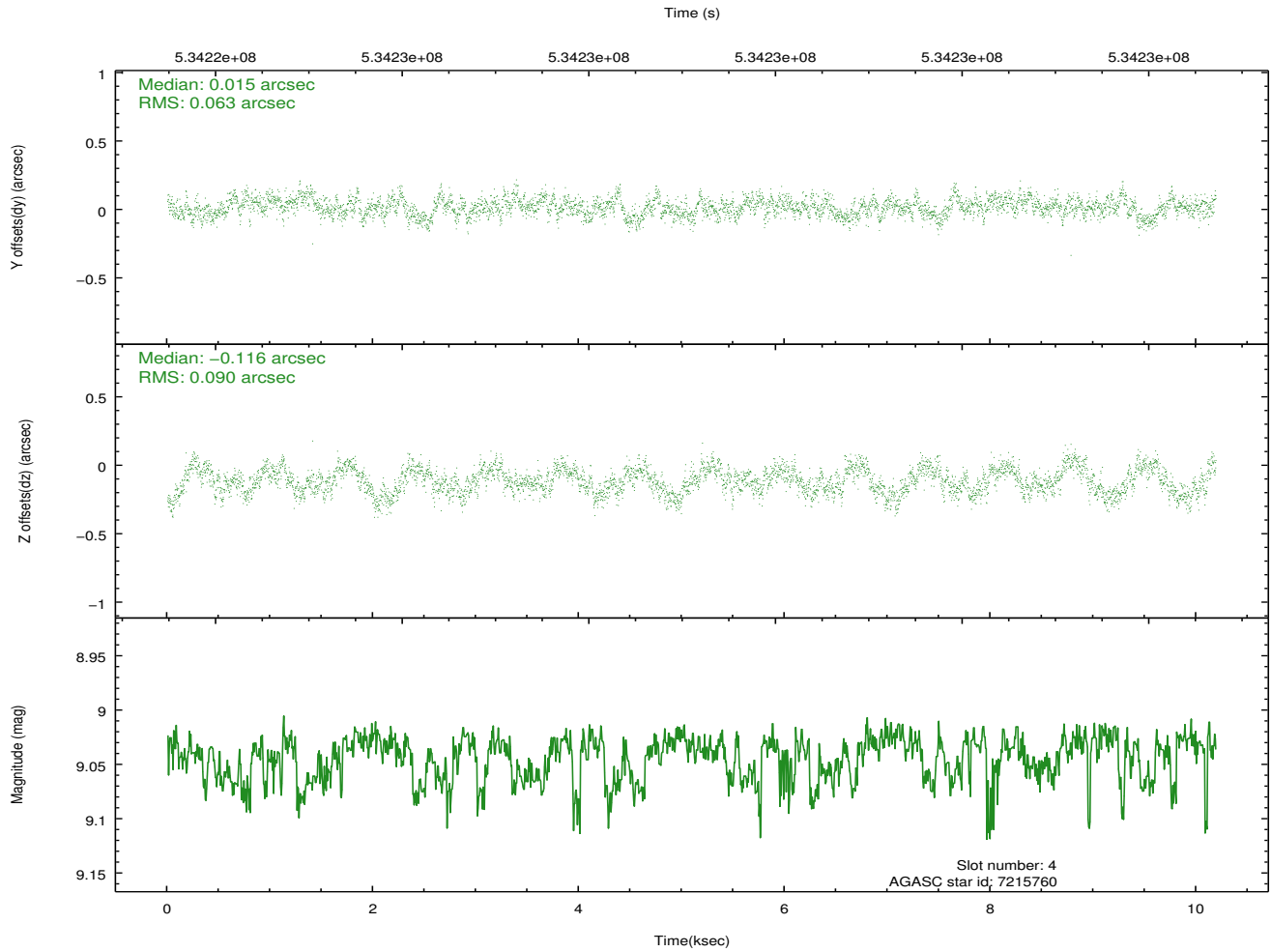
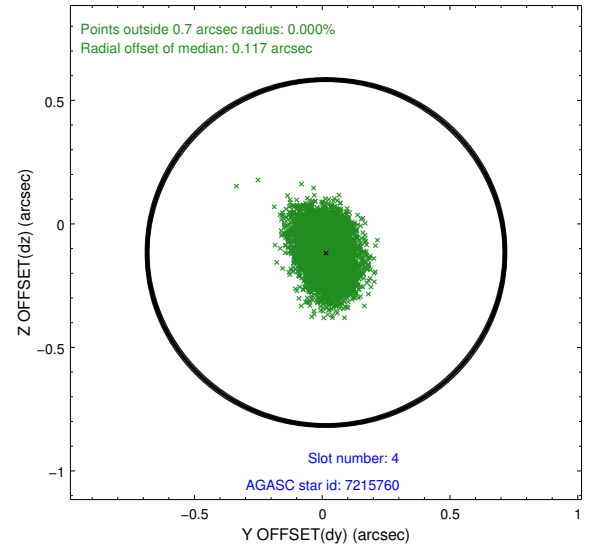
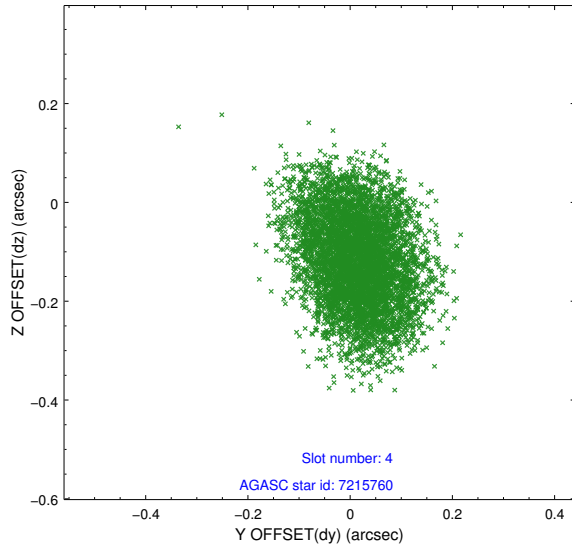
slot	status	used	id	mag	n_pts	med_dy	med_dz	dr1	dr2	ra	dec	mean_y	mean_z
0	FID		ACIS-I-1	7.21	2485	0.058	0.018	0.013	0.030	0.000000	0.000000	920.15	-841.71
1	FID		ACIS-I-5	7.20	2485	-0.284	0.050	0.009	0.017	0.000000	0.000000	-1828.05	1055.50
2	FID		ACIS-I-6	7.21	2485	0.137	0.001	0.010	0.016	0.000000	0.000000	385.16	1700.57
3	GUIDE	used	7211616	7.83	4969	0.068	0.273	0.079	0.127	45.964645	1.019611	-1472.56	-2286.28
4	GUIDE	used	7215760	9.04	4967	0.015	-0.116	0.119	0.187	46.935795	1.847564	-1310.95	2303.90
5	GUIDE	used	7219064	6.80	4970	-0.131	-0.072	0.074	0.123	46.915859	1.405960	-187.00	1178.46
6	GUIDE	used	7219552	8.53	4970	-0.044	-0.181	0.084	0.139	47.238629	1.114495	1371.39	1325.99
7	GUIDE	used	7219576	8.95	4966	0.101	0.097	0.105	0.169	46.931678	0.861328	1299.62	-104.16

2.4 Star Slots

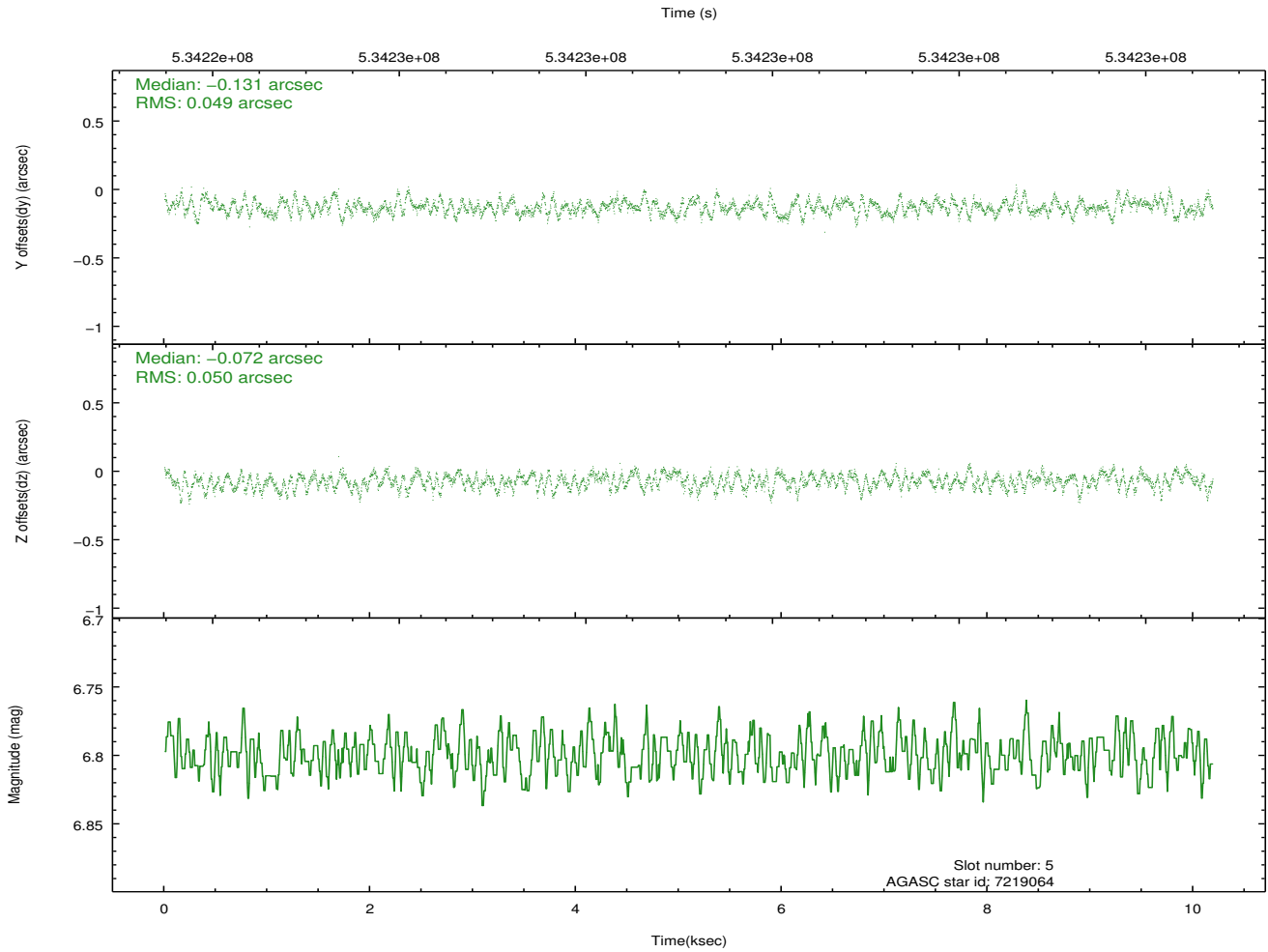
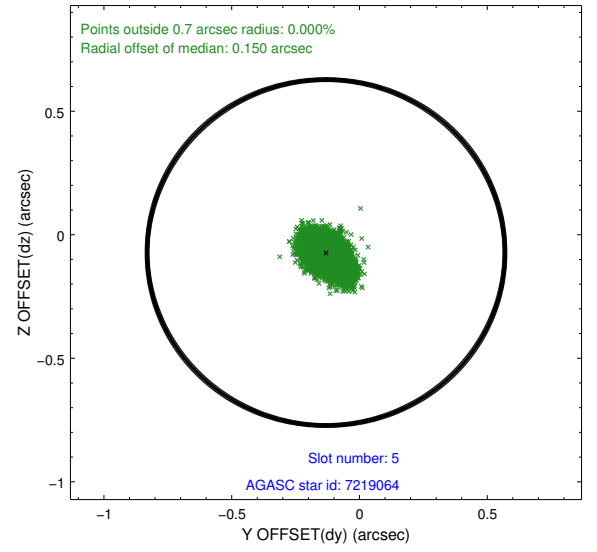
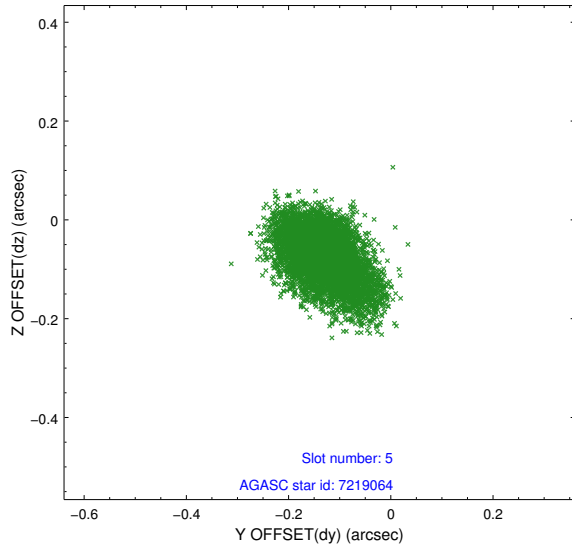
2.4.1 Slot 3



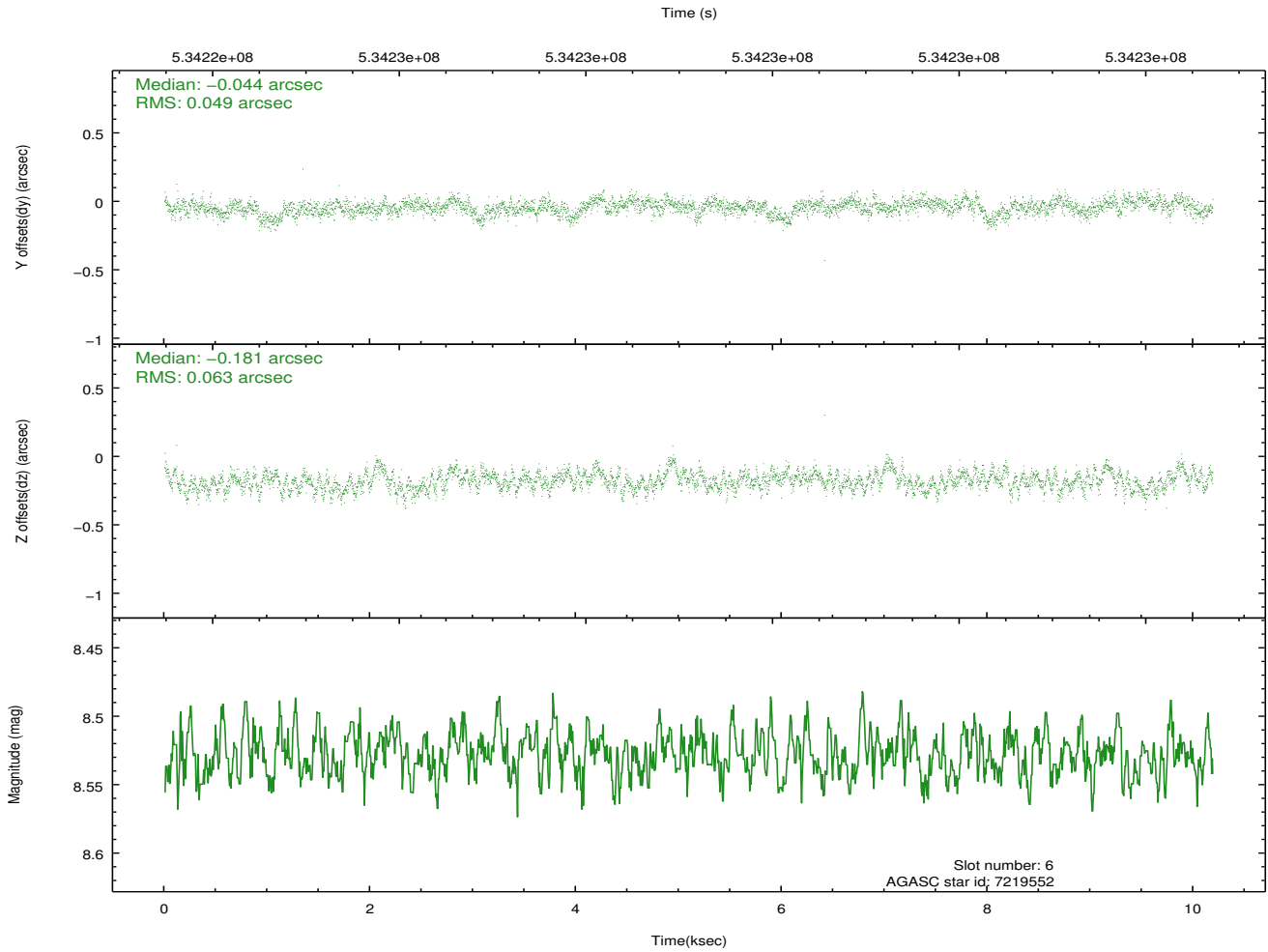
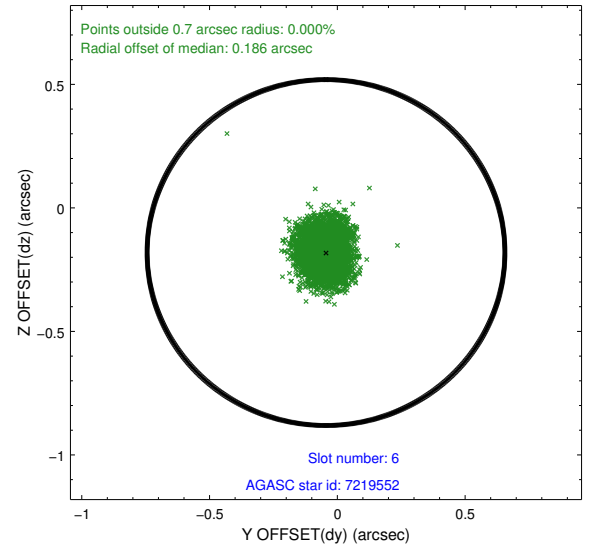
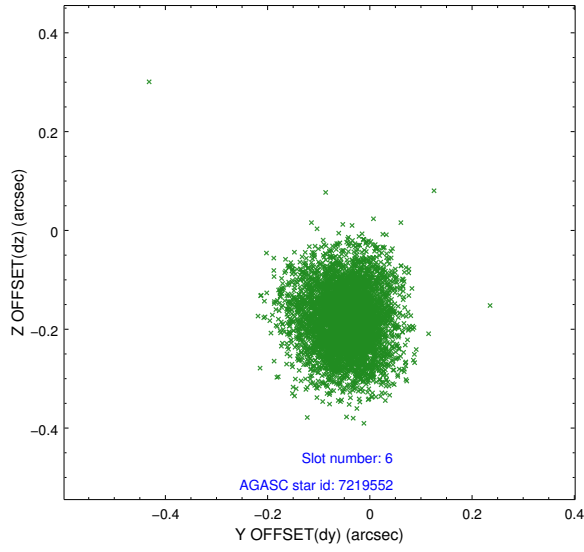
2.4.2 Slot 4



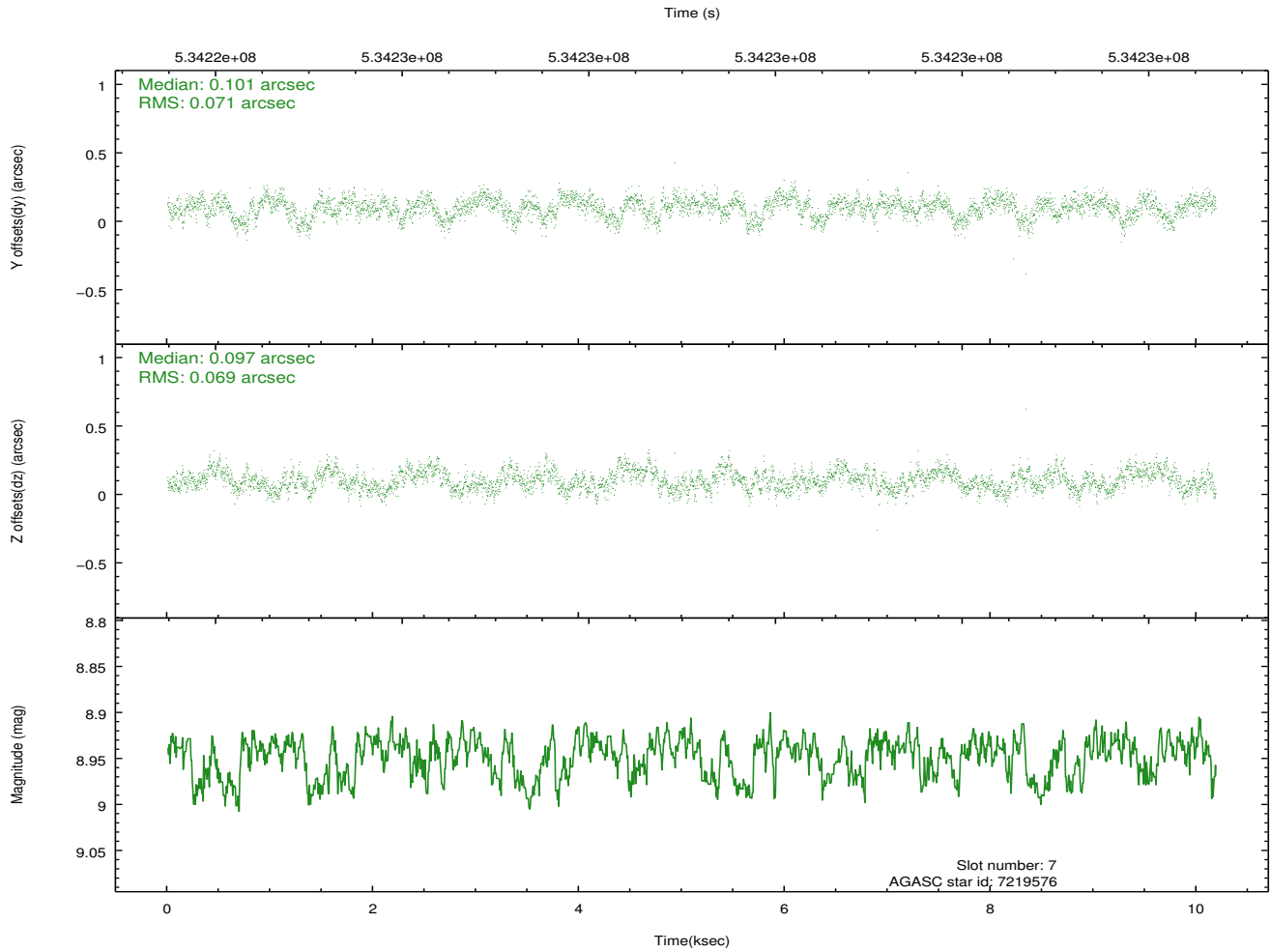
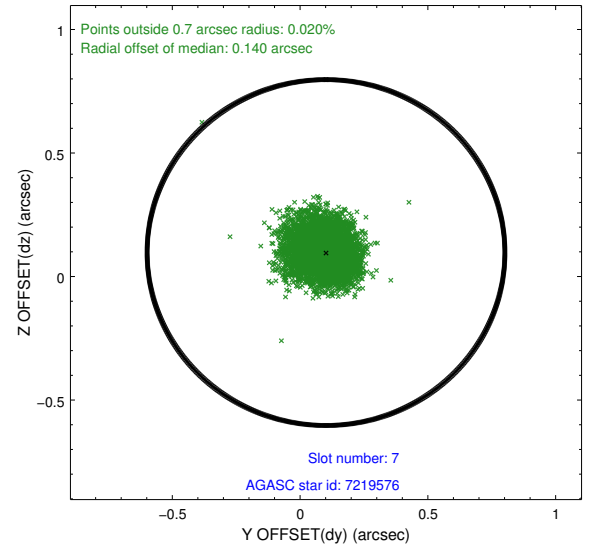
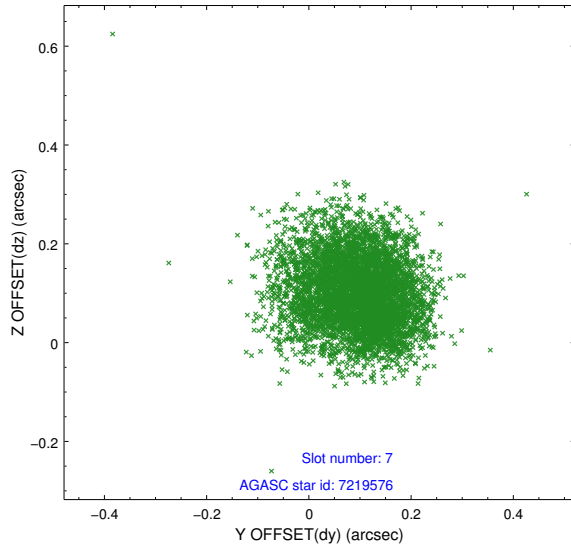
2.4.3 Slot 5



2.4.4 Slot 6

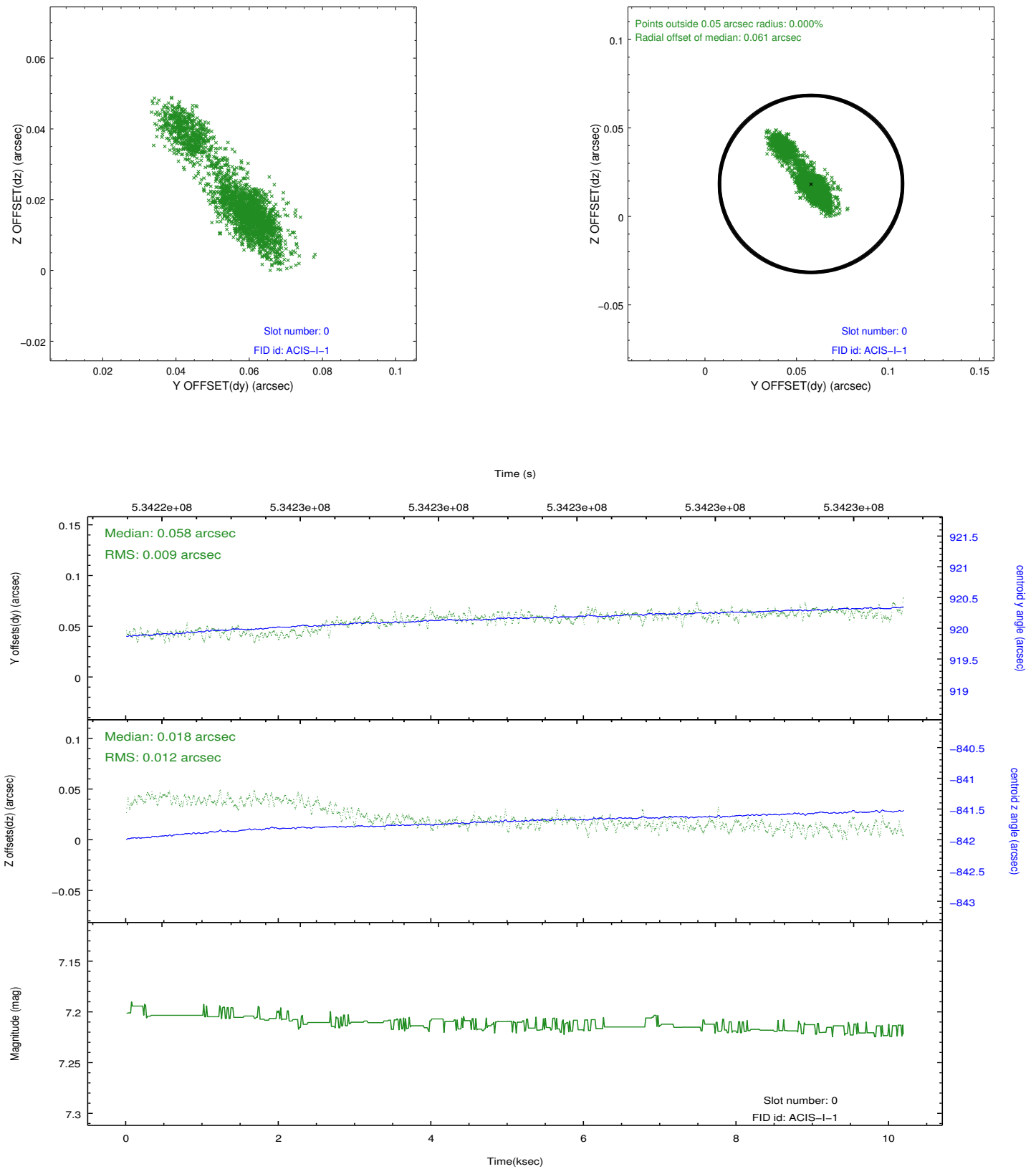


2.4.5 Slot 7

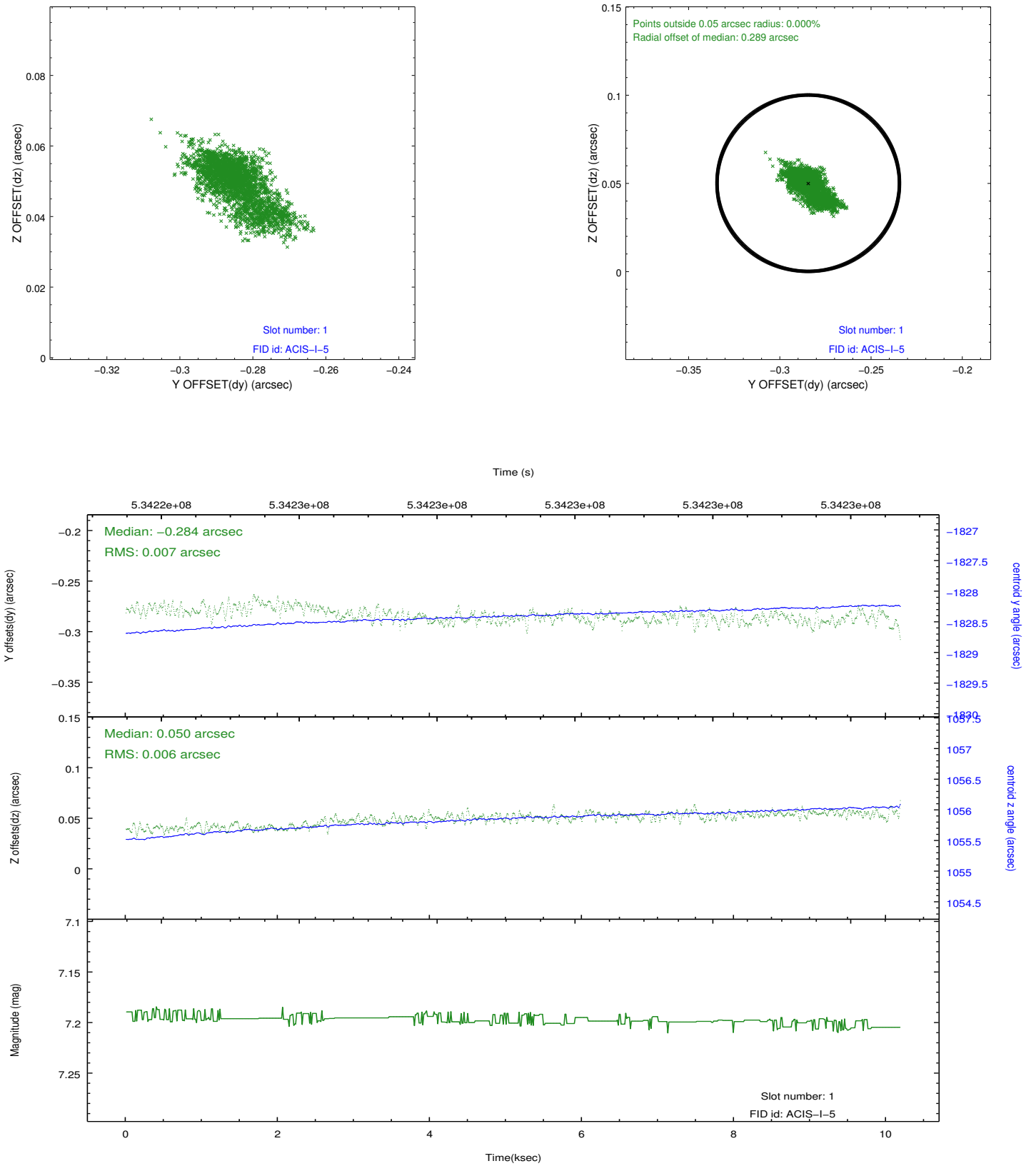


2.5 FID Slots

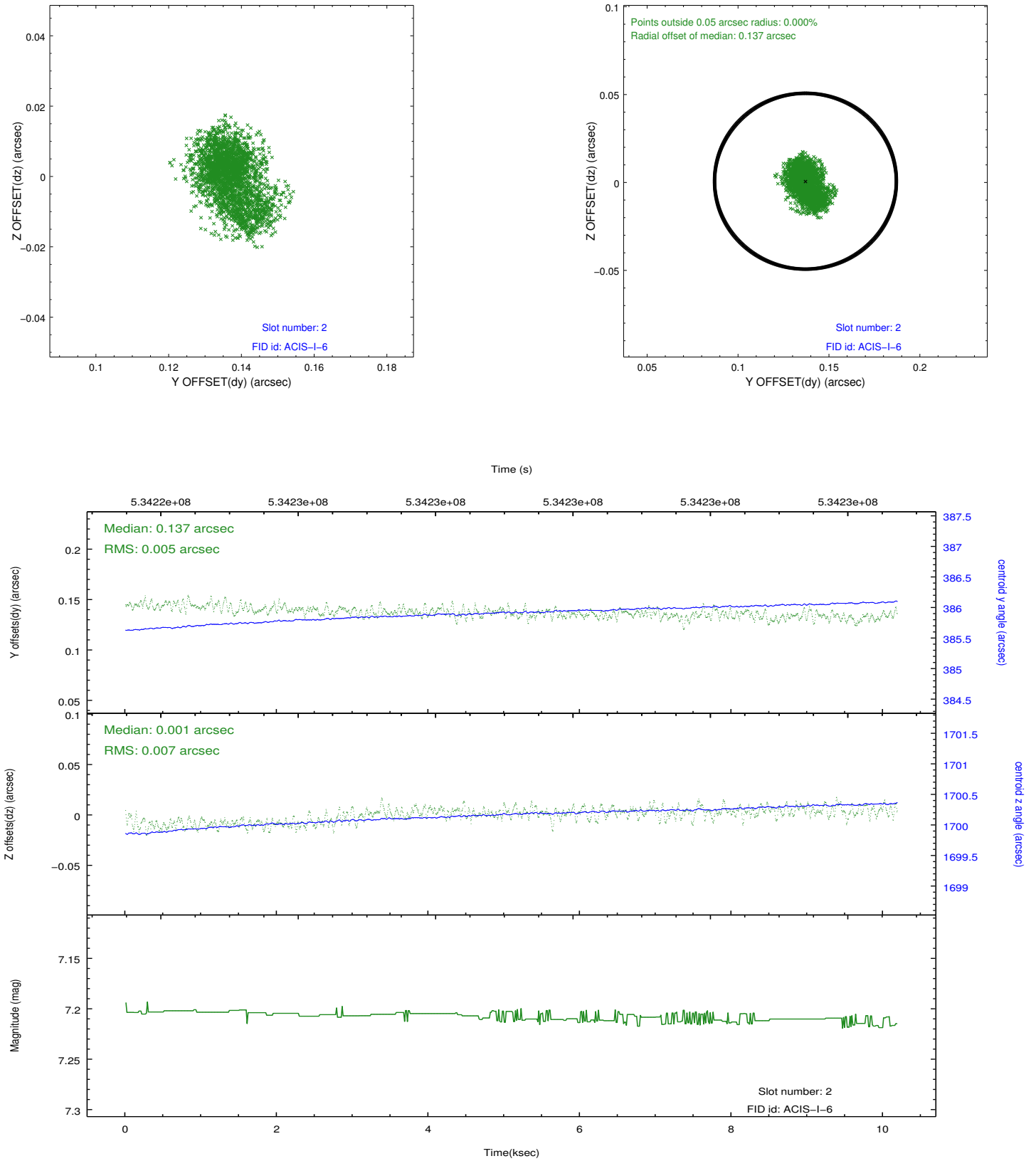
2.5.1 Slot 0



2.5.2 Slot 1



2.5.3 Slot 2



A Summary

A.1 Status

V&V Scientist	Jen Lauer
V&V Date (YYYY-MM-DD)	2014.12.08
V&V Edition	1
V&V Disposition and Status	OK
V&V Charge Time	10.068800077438

A.2 Comments