

# V&V Reference Report

## L2 ASCDS Version : 10.2.4

Observation 16116 - L2 Version 1  
Chandra X-Ray Center

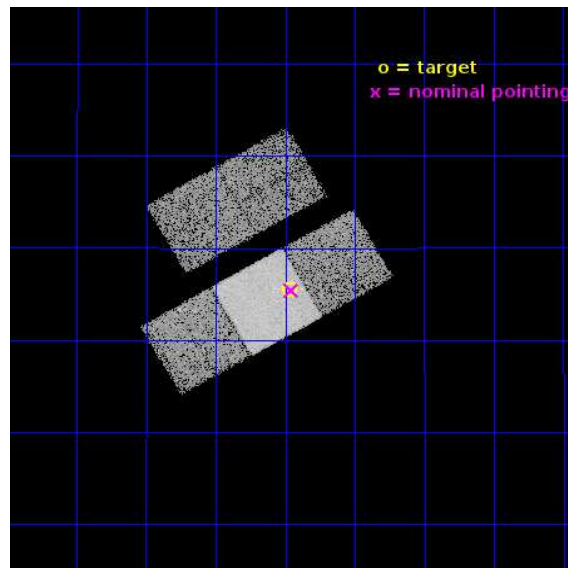
L2 Processing Date : Sep 1 2014

## Contents

<b>1</b>	<b>Front</b>	<b>2</b>
<b>2</b>	<b>OBI</b>	<b>3</b>
2.1	OBI . . . . .	3
2.1.1	Images . . . . .	3
2.1.2	Bias . . . . .	3
2.1.3	Parameters . . . . .	4
2.1.4	Events . . . . .	4
2.2	Compared Parameters . . . . .	5
2.3	Aspect . . . . .	6
2.4	Star Slots . . . . .	9
2.4.1	Slot 3 . . . . .	9
2.4.2	Slot 4 . . . . .	10
2.4.3	Slot 5 . . . . .	11
2.4.4	Slot 6 . . . . .	12
2.4.5	Slot 7 . . . . .	13
2.5	FID Slots . . . . .	14
2.5.1	Slot 0 . . . . .	14
2.5.2	Slot 1 . . . . .	15
2.5.3	Slot 2 . . . . .	16
<b>A</b>	<b>Summary</b>	<b>17</b>
A.1	Status . . . . .	17
A.2	Comments . . . . .	17

# 1 Front

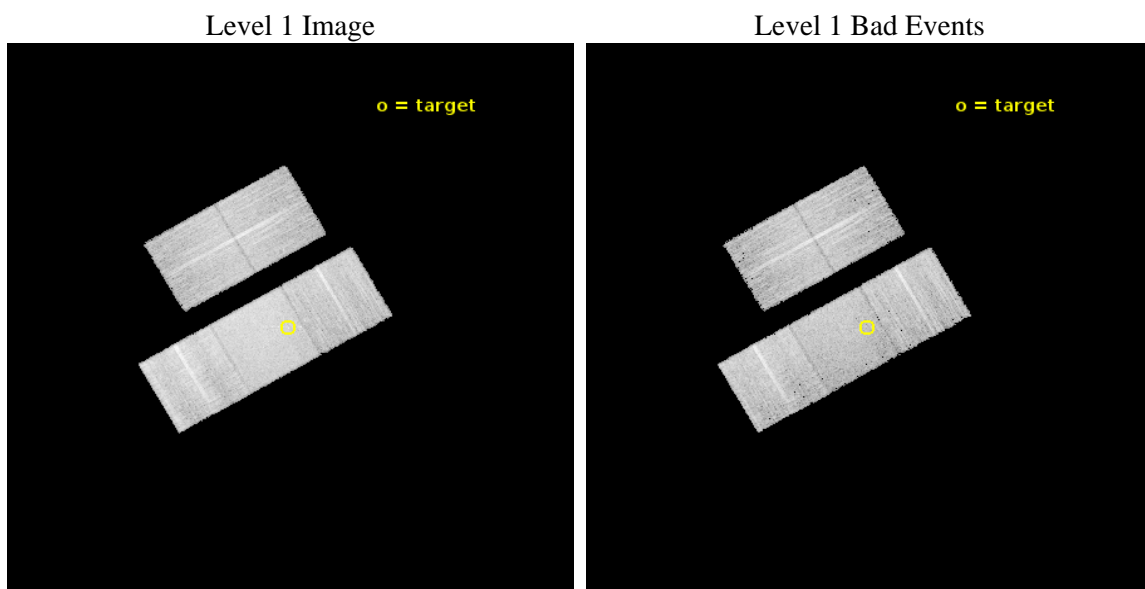
seq_num	703004	Sequence number
obs_id	16116	Observation id
title	A Pilot Search for Spatially Offset AGN in Galaxy Merger Remnants	&#160
observer	Dr. Julia Comerford	Principal investigator
object	SDSS J232328.01+140530.2	Source name
dtcycle	0	&#160
cycle	P	events from which exps? Prim/Second/Both
ra_targ	350.86671	Observer's specified target RA [deg]
dec_targ	14.09172	Observer's specified target Dec [deg]
ra_nom	350.86383714658	Nominal RA [deg]
dec_nom	14.090290002798	Nominal Dec [deg]
roll_nom	150.15731745866	Nominal Roll [deg]
revision	1	Processing version of data
ontime	15065.095385253	Sum of GTIs [s]
livetime	14868.258823283	Livetime [s]
ontime2	15064.93122524	Sum of GTIs [s]
ontime3	15065.013305247	Sum of GTIs [s]
ontime6	15065.05434525	Sum of GTIs [s]
ontime7	15065.095385253	Sum of GTIs [s]
ontime8	15061.831304431	Sum of GTIs [s]
l2events	78088	Number of level 2 events



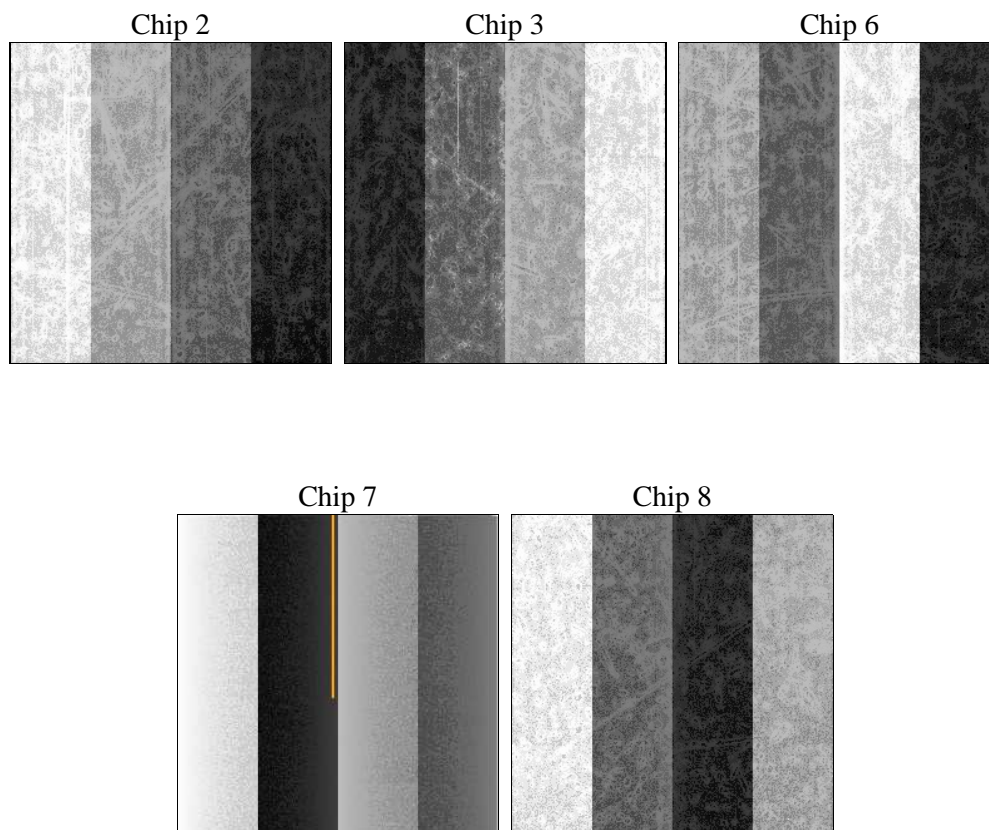
## 2 OBI

### 2.1 OBI

#### 2.1.1 Images



#### 2.1.2 Bias



### 2.1.3 Parameters

obi_num	0	Obi number	sched_exp_time	15000.000000	[s] Scheduled observation exposure time
ascdsver	10.2.4	Processing system revision	ontime	15065.095385253	Sum of GTIs [s]
caldbver	4.6.2	&#160	ontime2	15064.93122524	Sum of GTIs [s]
date	2014-09-01T10:29:14	Date and time of file creation	ontime3	15065.013305247	Sum of GTIs [s]
revision	1	Processing version of data	ontime6	15065.05434525	Sum of GTIs [s]
			ontime7	15065.095385253	Sum of GTIs [s]
			ontime8	15061.831304431	Sum of GTIs [s]
			l1events	434149	Number of level 1 events

### 2.1.4 Events

	ccd 2	ccd 3	ccd 6	ccd 7	ccd 8
level 1 events	72927	74311	78827	106233	101851
rejected events	64188	65901	69255	59867	75352
rejected %	88%	88%	87%	56%	73%

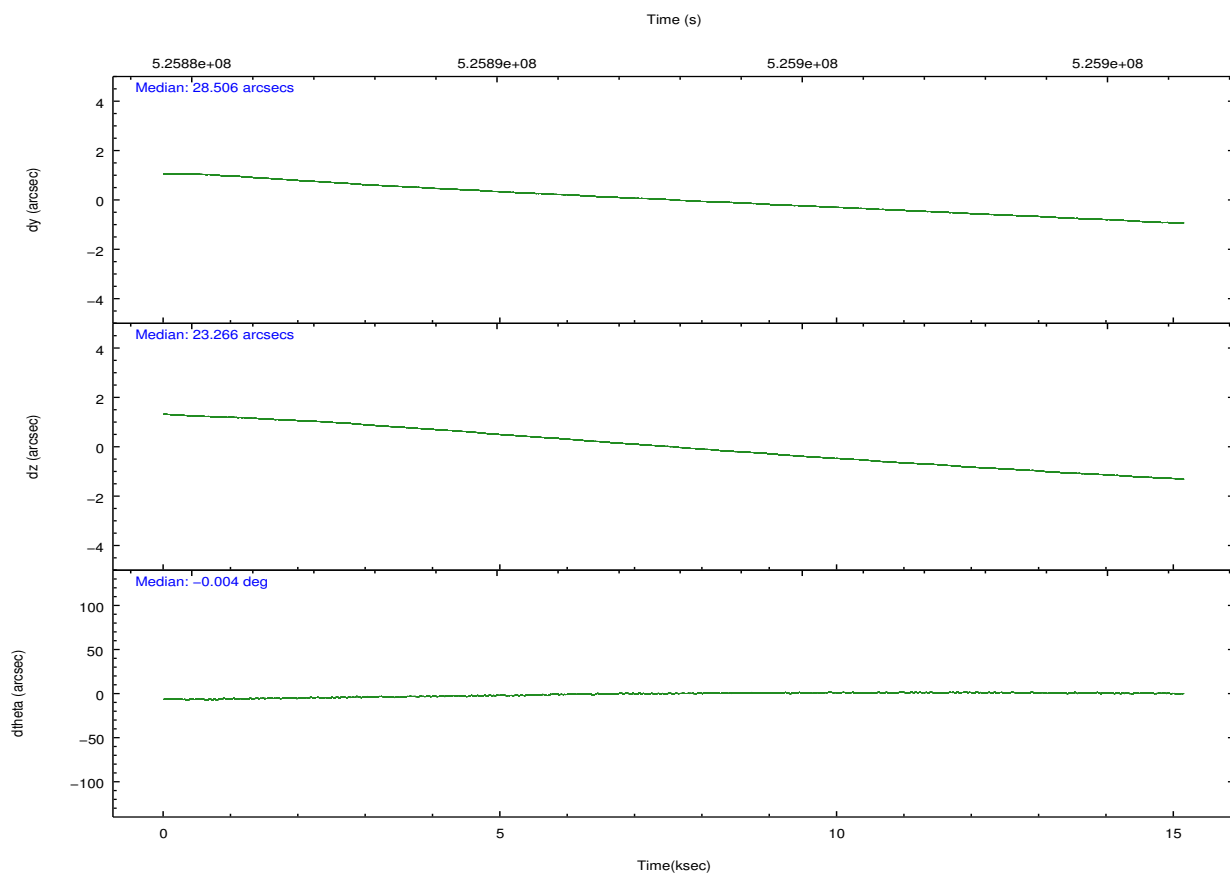
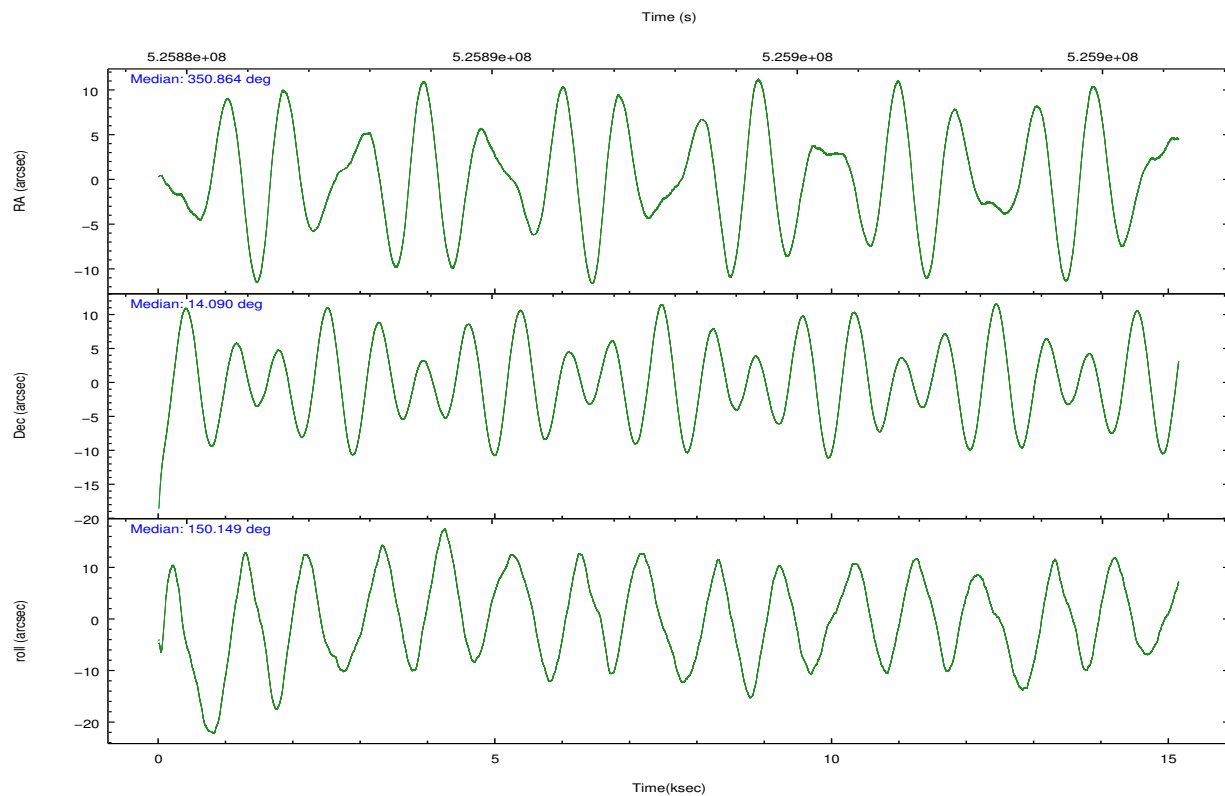
	ccd 2	ccd 3	ccd 6	ccd 7	ccd 8
grade 0 events	3168	2796	3249	4208	7656
	4%	3%	4%	3%	7%
grade 1 events	48	38	54	121	66
	0%	0%	0%	0%	0%
grade 2 events	2088	1846	2145	9487	6421
	2%	2%	2%	8%	6%
grade 3 events	896	929	1022	3954	2596
	1%	1%	1%	3%	2%
grade 4 events	855	975	998	3927	2432
	1%	1%	1%	3%	2%
grade 5 events	3419	4089	4200	11235	5892
	4%	5%	5%	10%	5%
grade 6 events	1738	1870	2163	24801	7399
	2%	2%	2%	23%	7%
grade 7 events	60715	61768	64996	48500	69389
	83%	83%	82%	45%	68%



## 2.2 Compared Parameters

Parameter	Planned	Actual	Parameter	Planned	Actual
Instrument	ACIS	ACIS	Obspar format version number	7	7
Detector	ACIS-23678	ACIS-23678	Obspar file type	PREDICTED	ACTUAL
Grating	NONE	NONE	Obspar update status	NONE	UPDATED
Data mode	FAINT	FAINT	CCD I0 on	N	N
Observation mode	POINTING	POINTING	CCD I1 on	N	N
[deg] Pointing RA	350.892134	350.8638371465775	CCD I2 on	O1	Y
[deg] Pointing Dec	14.090760	14.09029000279837	CCD I3 on	O4	Y
[deg] Pointing Roll	149.993816	150.1573174586606	CCD S0 on	N	N
[mm] SIM focus pos	-0.684267	-0.6828225247311905	CCD S1 on	N	N
[mm] SIM defocus	0	0.001444936568705701	CCD S2 on	O2	Y
[mm] SIM translation stage pos	-190.132523	-190.1425803651734	CCD S3 on	Y	Y
[mm] SIM translation stage offset	0	0.01005778216563158	CCD S4 on	O3	Y
[s] Observation start time (MET)	525885466.184000	525884223.51378	CCD S5 on	N	N
Observation start date	2014-08-31T15:16:39	2014-08-31T14:57:03	Number of optional ACIS chips dropped	0	0
[s] Observation end time (MET)	525900466.184000	525901526.02724	On-chip summing requested	N	N
Observation end date	2014-08-31T19:26:39	2014-08-31T19:45:26	Subarray requested	NONE	NONE
Read mode	TIMED	TIMED	Alternating exposures requested	N	N
			[s] Primary exposure time	0.000000	3.1

## 2.3 Aspect

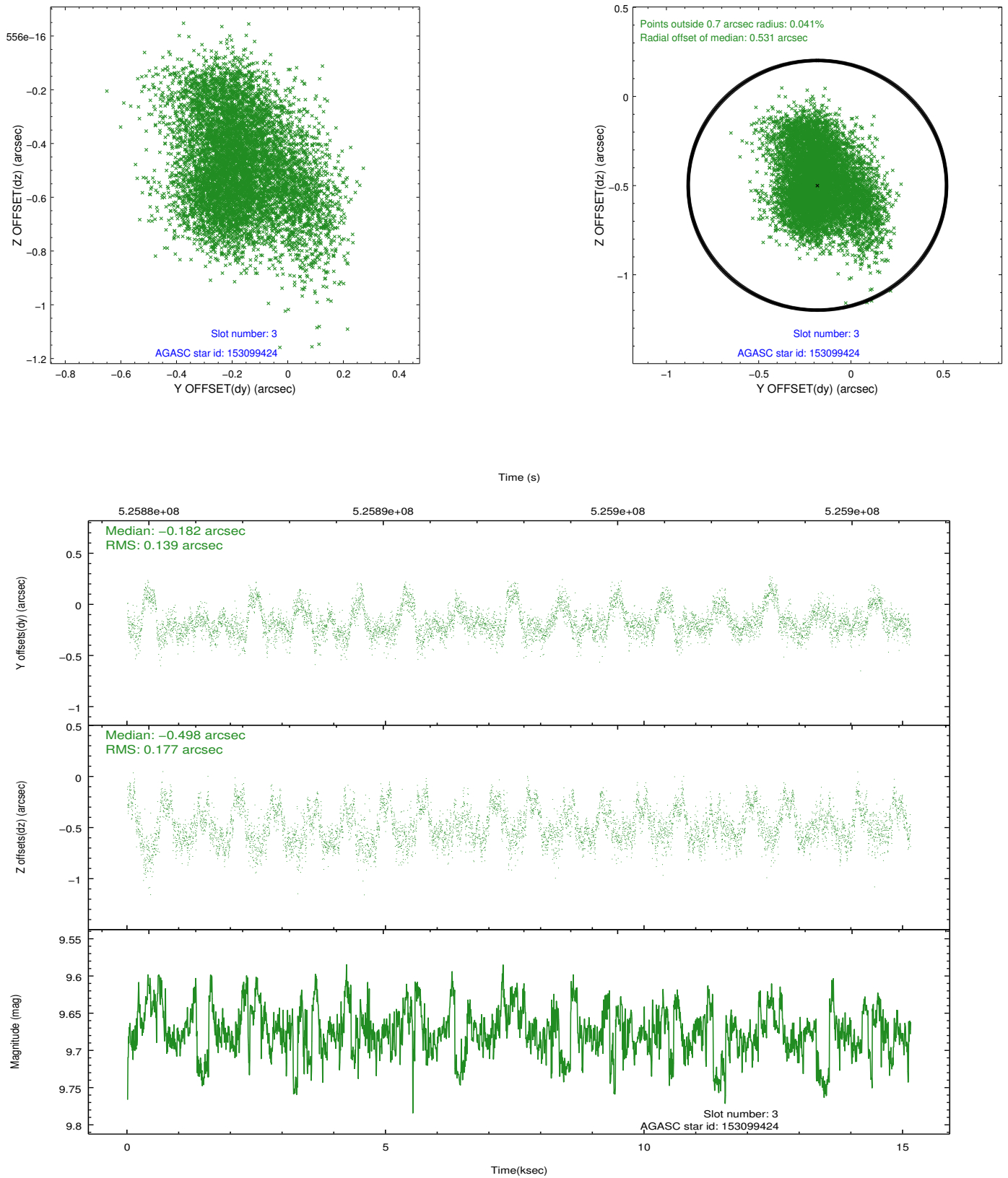


### Slot Statistics

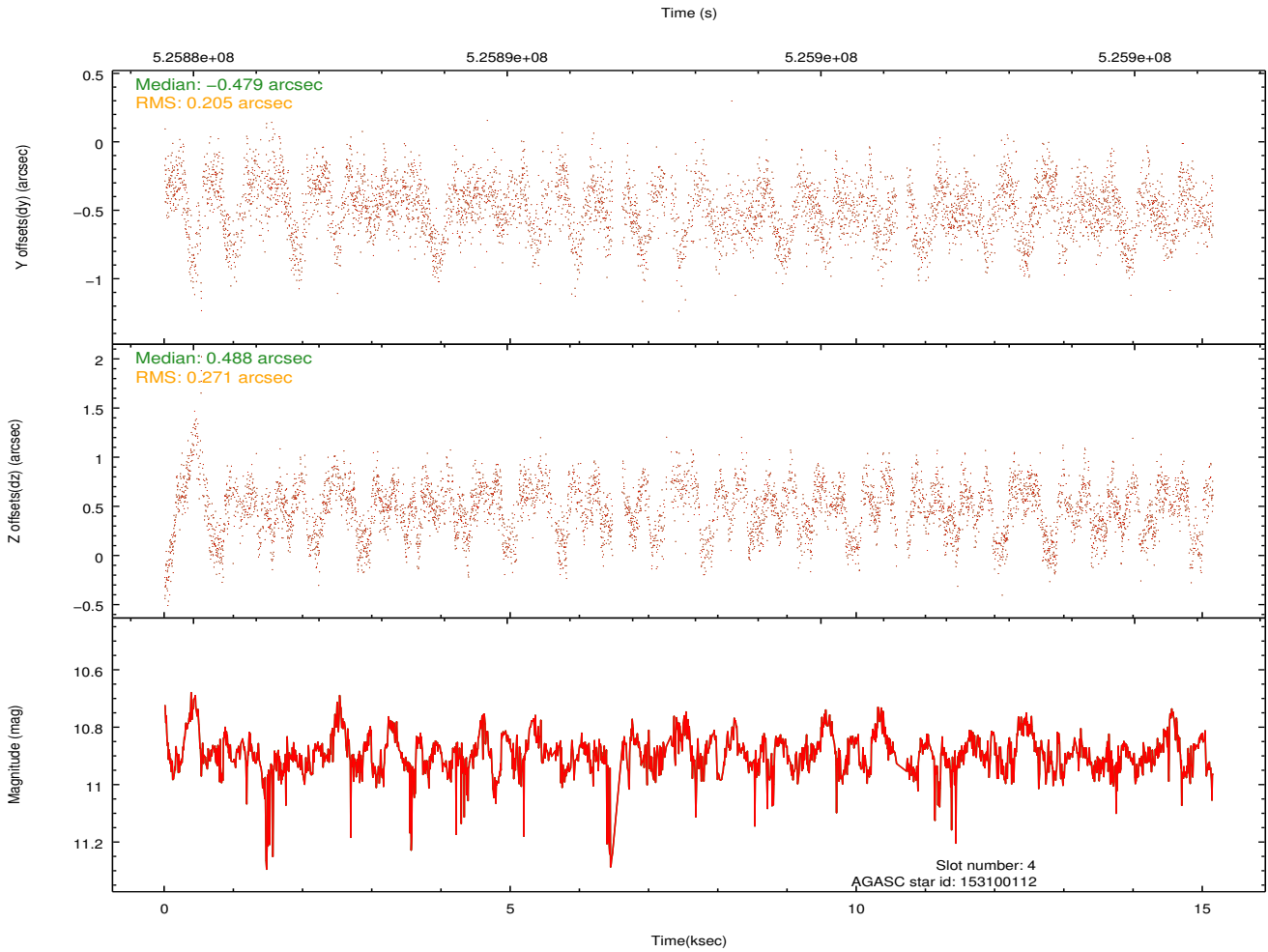
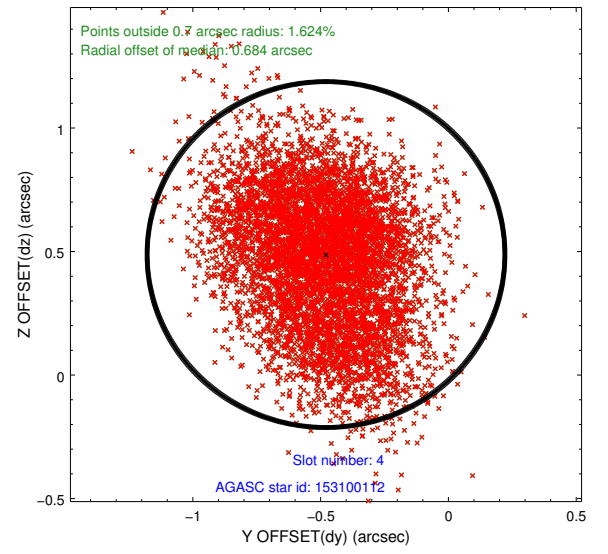
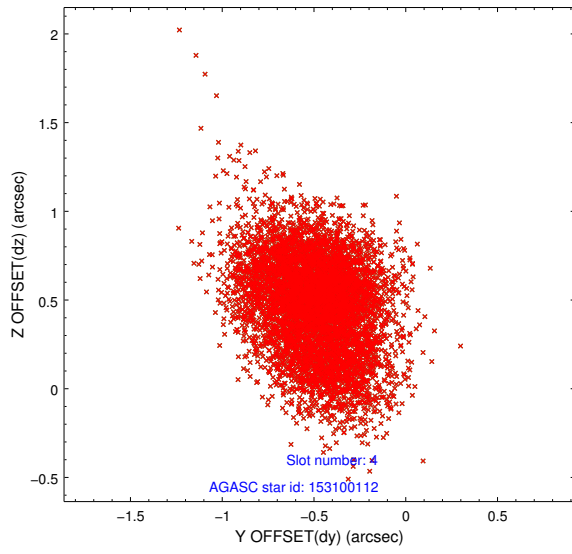
slot	status	id	mag	n_pts	med_dy	med_dz	dr1	dr2	ra	dec	mean_y	mean_z
0	FID	ACIS-S-2	6.95	3694	-0.201	-0.051	0.032	0.055	0.000000	0.000000	-782.08	-1744.87
1	FID	ACIS-S-4	7.04	3694	0.428	0.116	0.019	0.038	0.000000	0.000000	2131.69	163.46
2	FID	ACIS-S-5	7.07	3694	-0.253	-0.044	0.026	0.059	0.000000	0.000000	-1834.58	157.31
3	GUIDE	153099424	9.68	7375	-0.182	-0.498	0.243	0.384	350.762698	13.578205	-530.36	1824.11
4	BAD	153100112	10.90	5787	-0.479	0.488	0.362	0.586	351.428111	13.829923	-2090.44	-124.49
5	GUIDE	153103288	9.47	7379	0.239	-0.011	0.126	0.210	351.249651	13.563096	-2032.87	1018.53
6	GUIDE	153095576	8.31	7383	-0.198	-0.347	0.110	0.173	350.240281	14.314272	2372.77	438.24
7	GUIDE	153100760	10.13	7337	0.495	0.476	0.237	0.410	351.256223	14.674171	-45.47	-2452.85

## 2.4 Star Slots

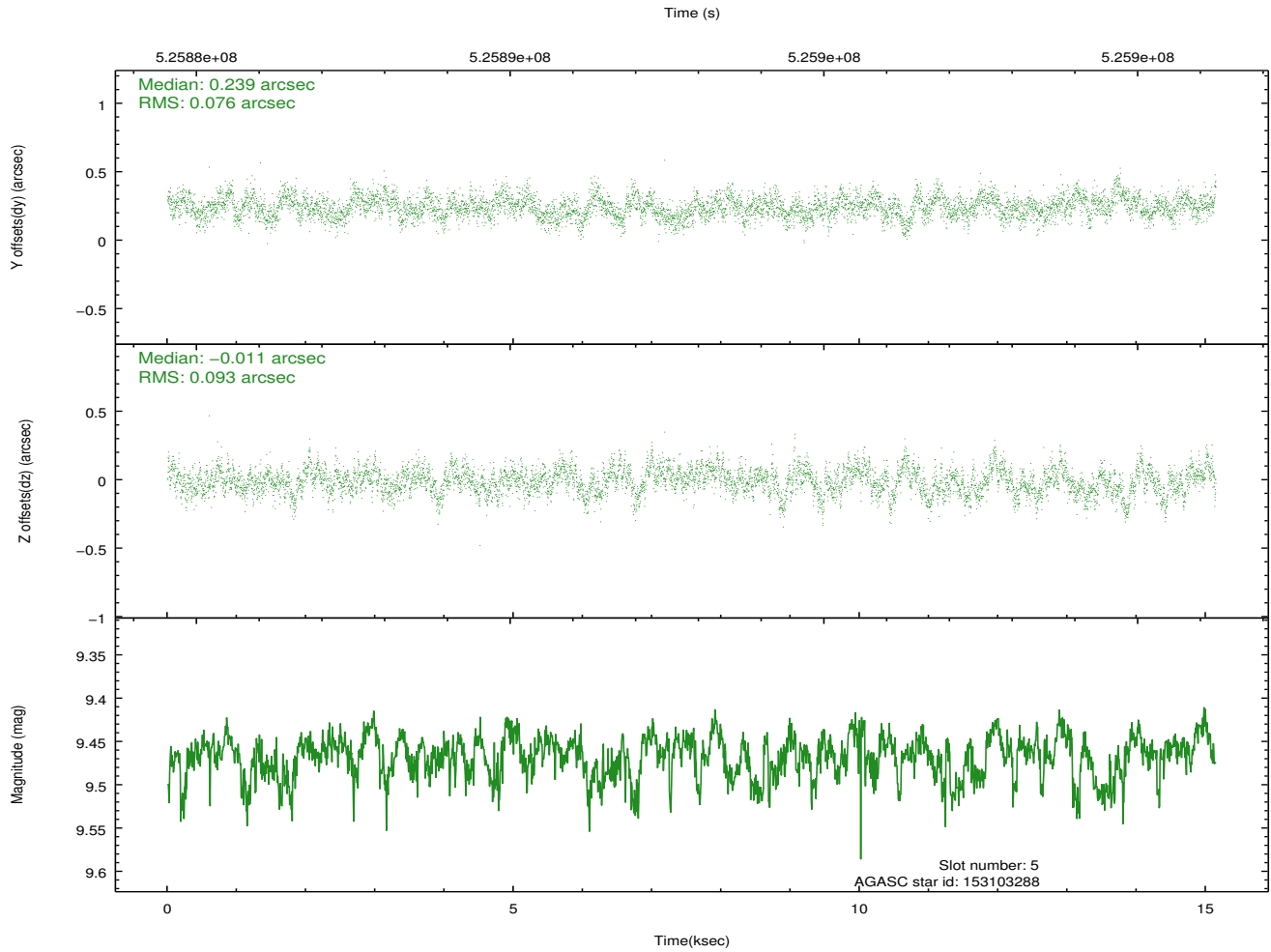
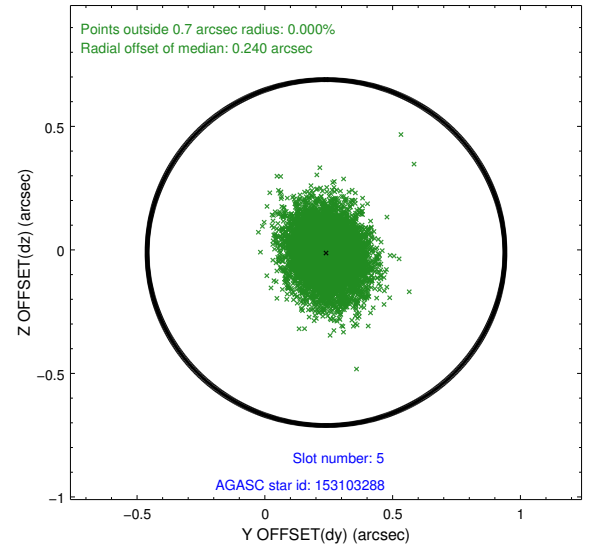
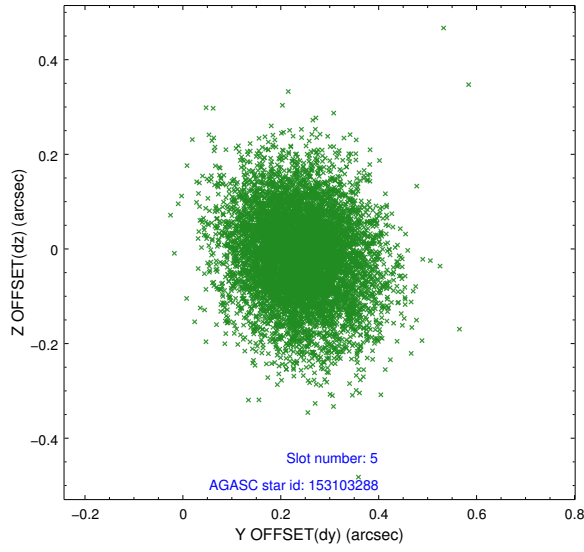
### 2.4.1 Slot 3



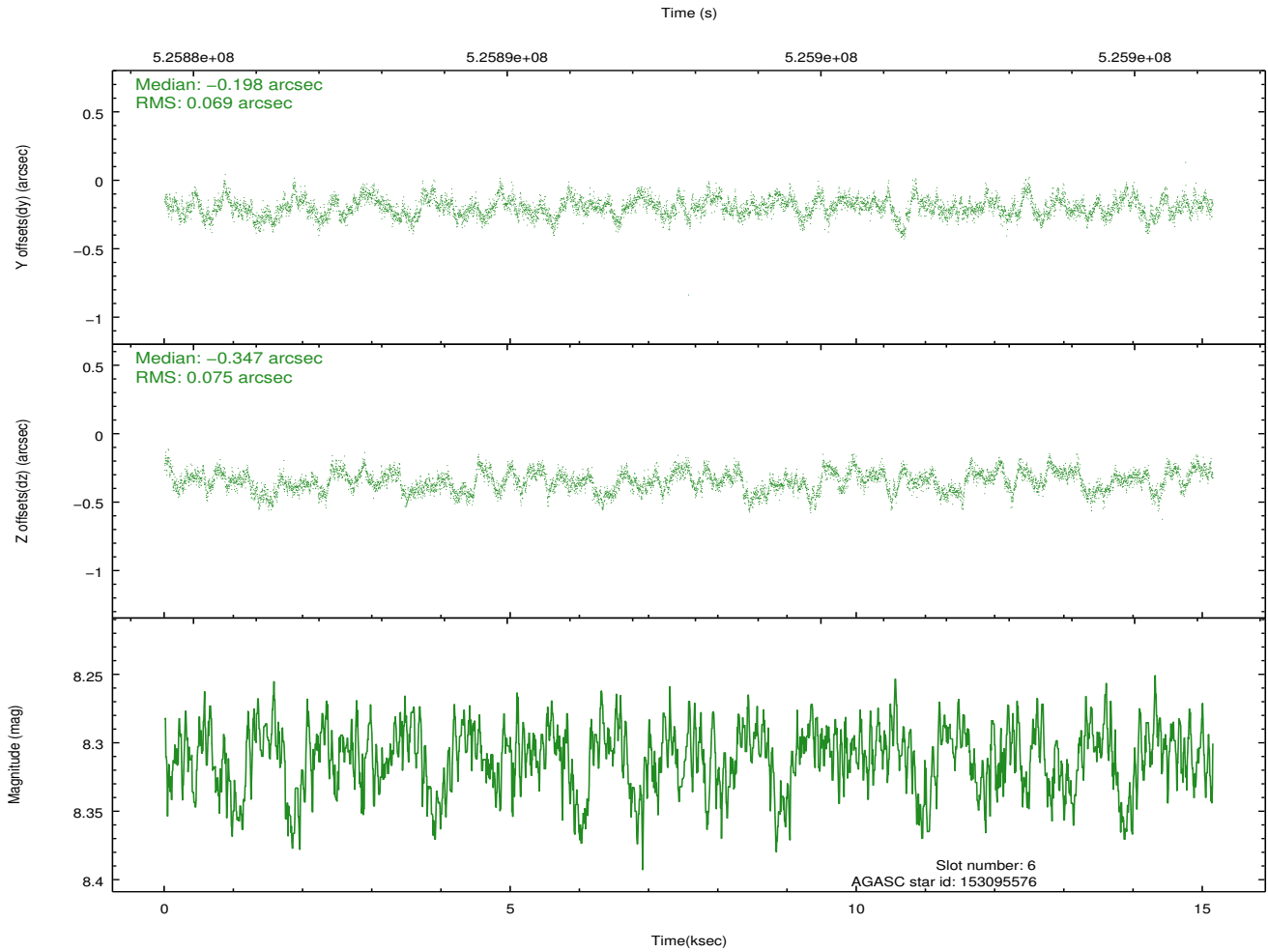
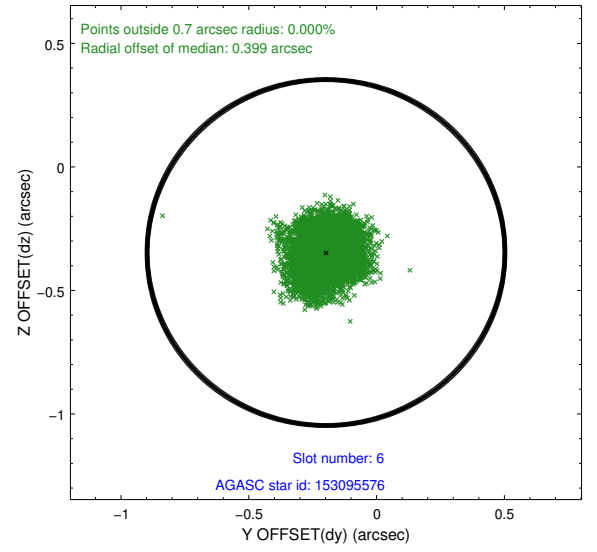
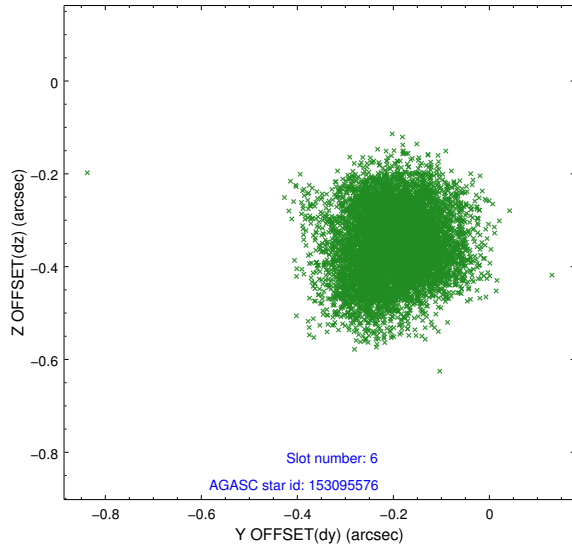
## 2.4.2 Slot 4



### 2.4.3 Slot 5

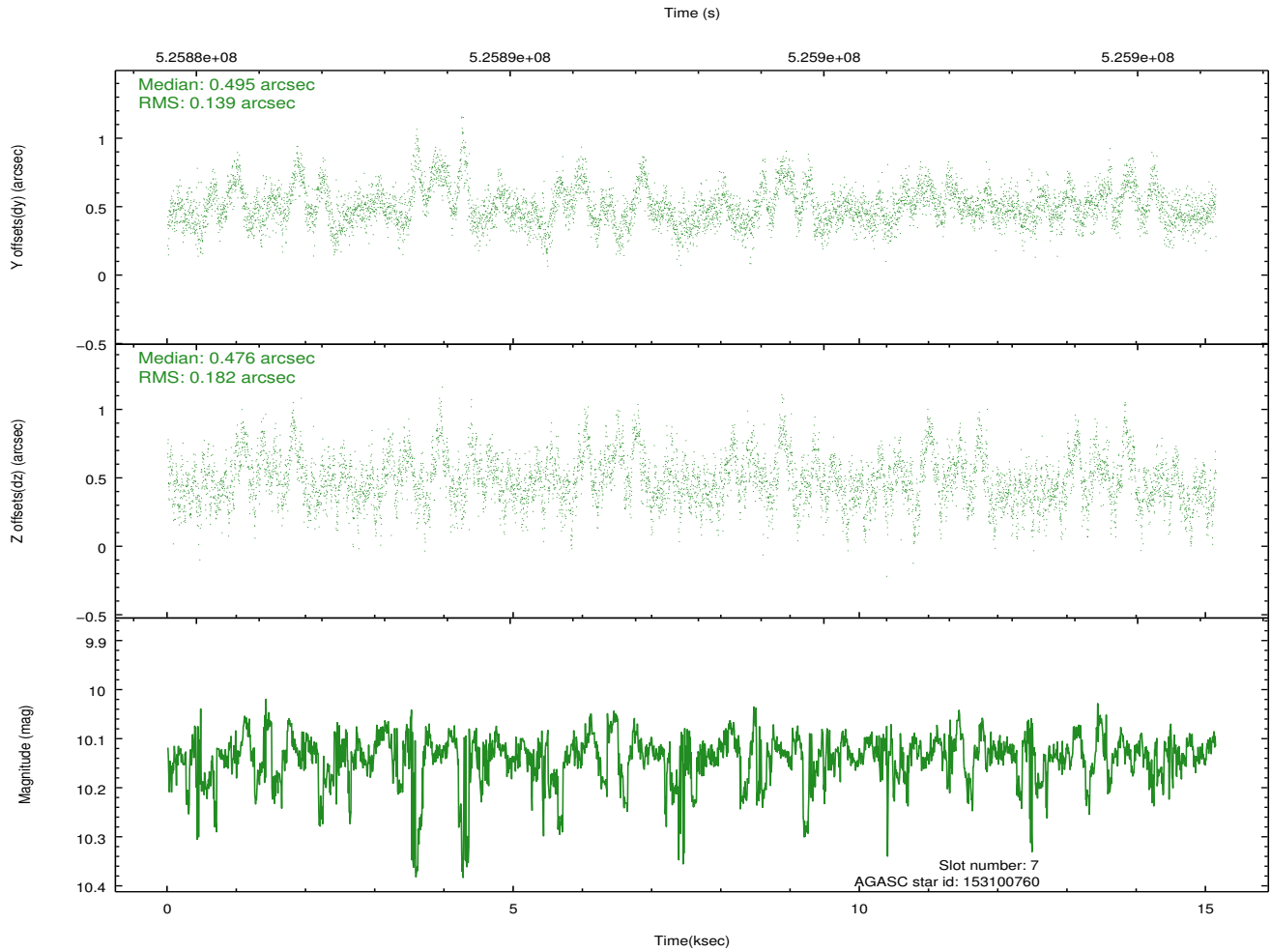
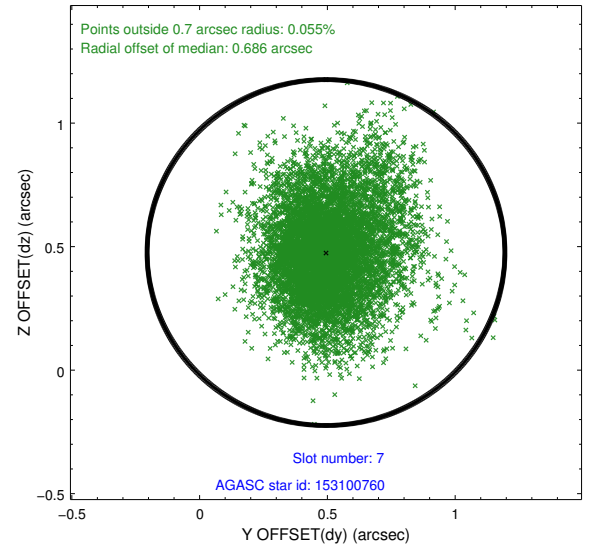
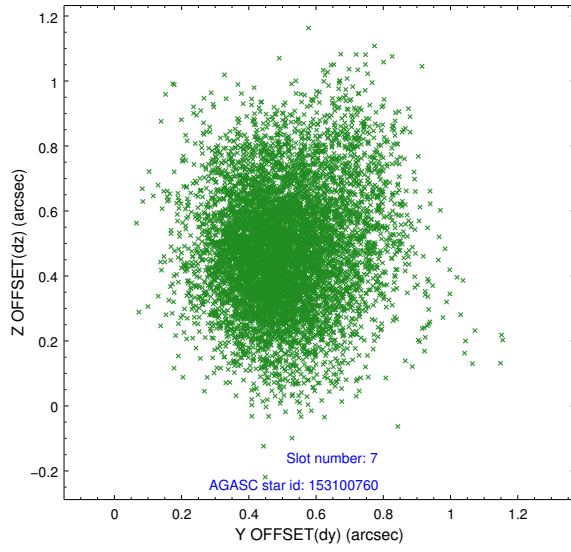


## 2.4.4 Slot 6



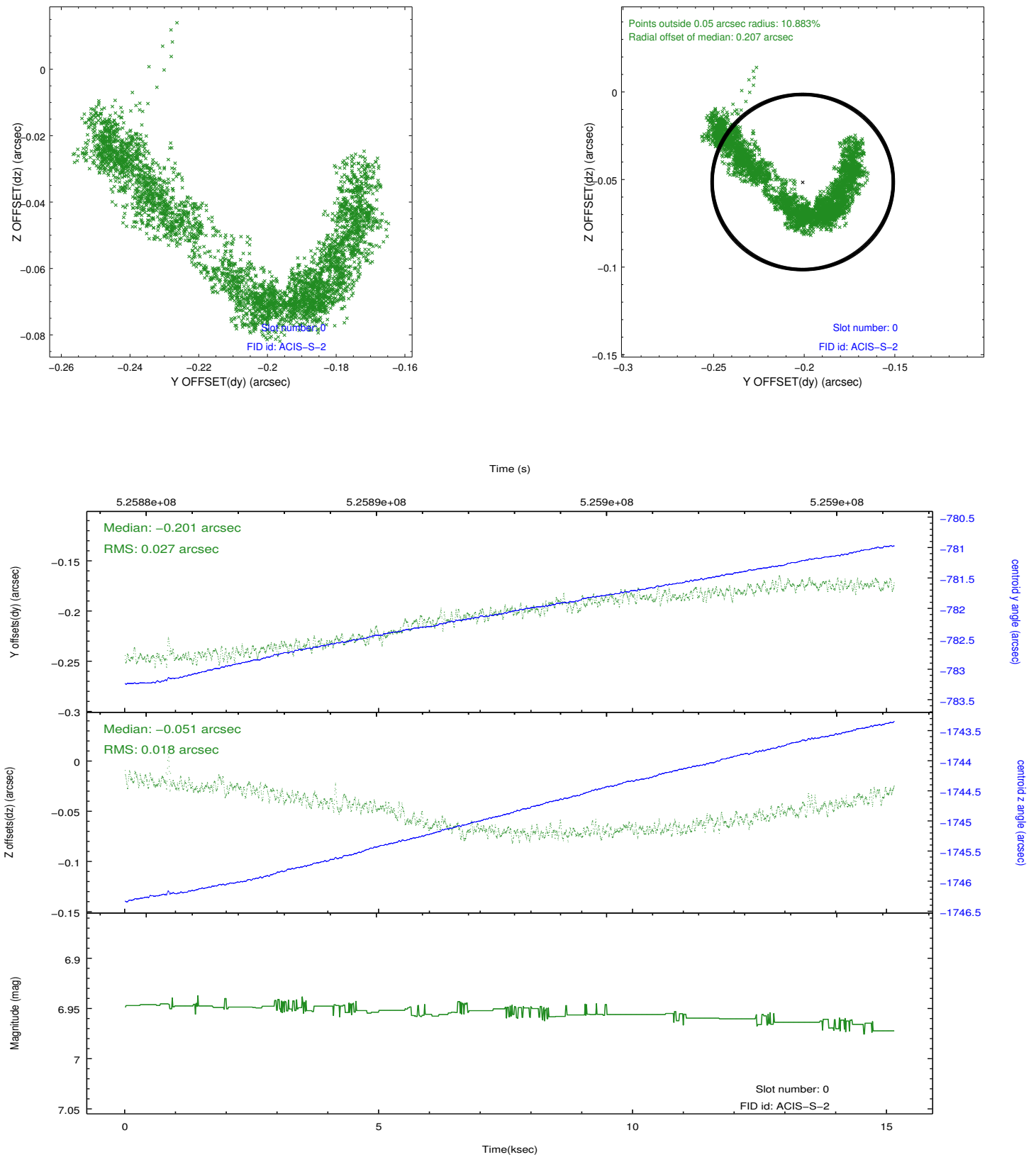


## 2.4.5 Slot 7

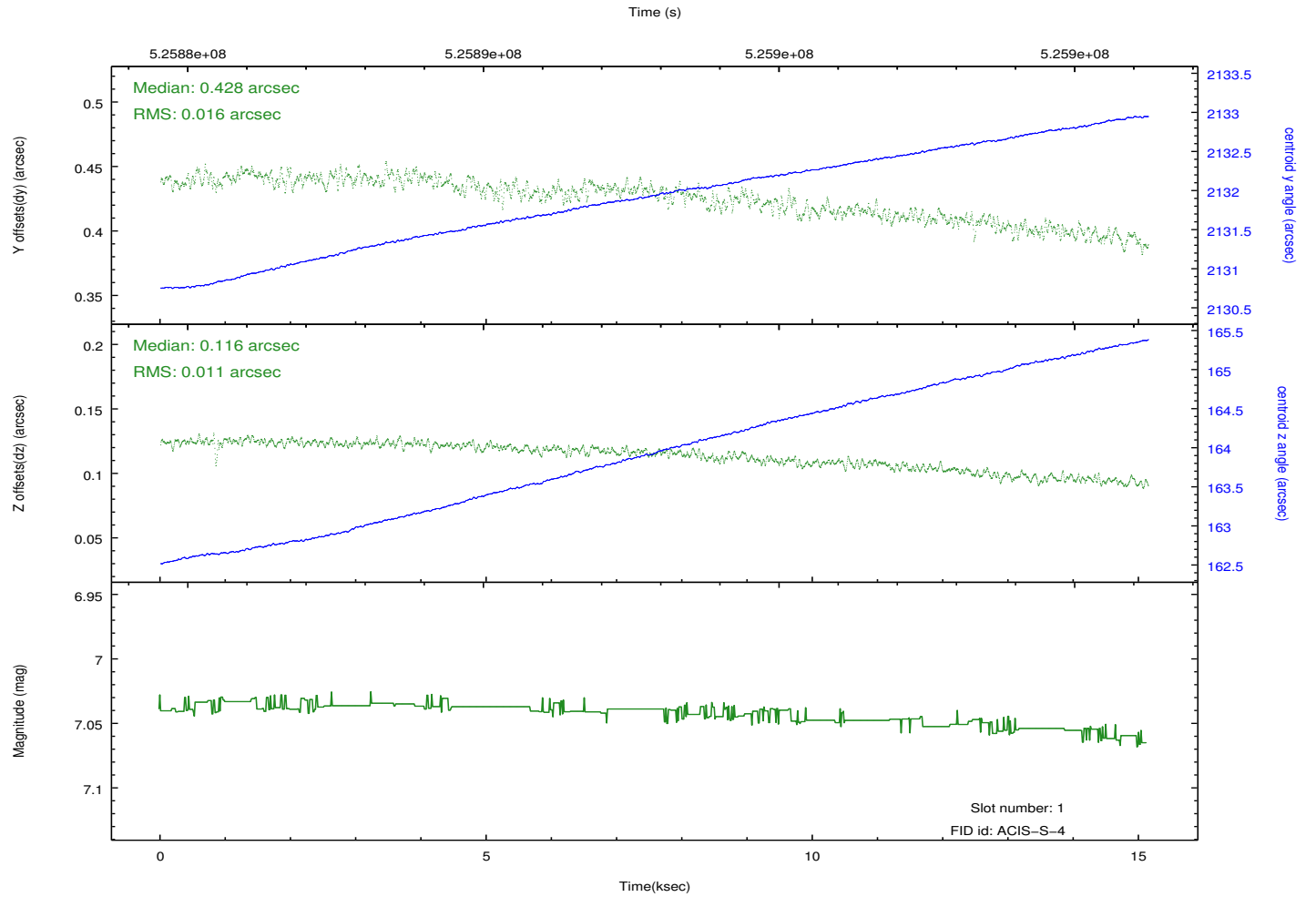
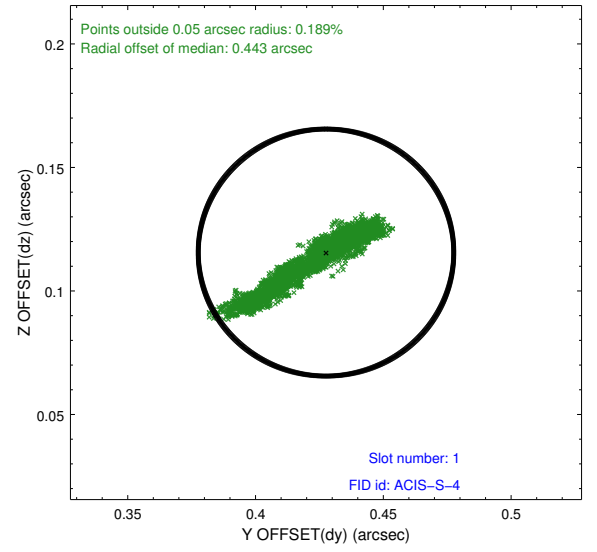
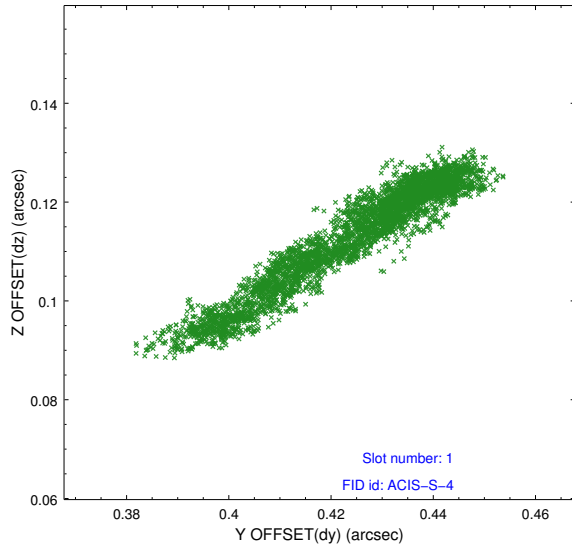


## 2.5 FID Slots

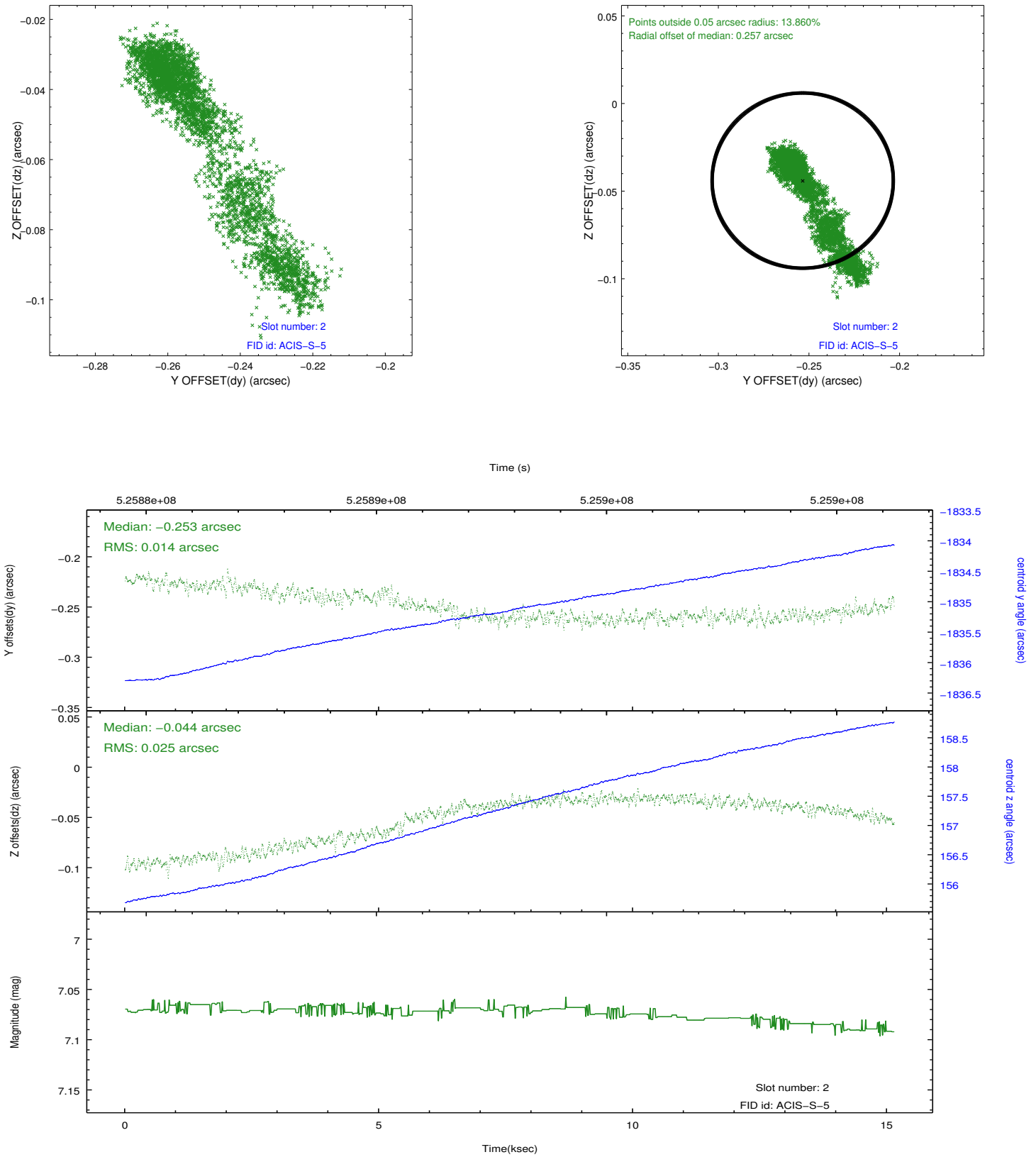
### 2.5.1 Slot 0



## 2.5.2 Slot 1



### 2.5.3 Slot 2



# A Summary

## A.1 Status

V&V Scientist	Joy Nichols
V&V Date (YYYY-MM-DD)	2014.09.03
V&V Edition	1
V&V Disposition and Status	OK
V&V Charge Time	15.065095385253

## A.2 Comments

The slot 1 radial offset of 0.443 arcsec is acceptable. While slot 4 is marked BAD it was used in the aspect solution, but it only exceeds the yellow limit and this is also ok for aspect.