

# V&V Reference Report

## L2 ASCDS Version : 10.2.2

Observation 16115 - L2 Version 3  
Chandra X-Ray Center

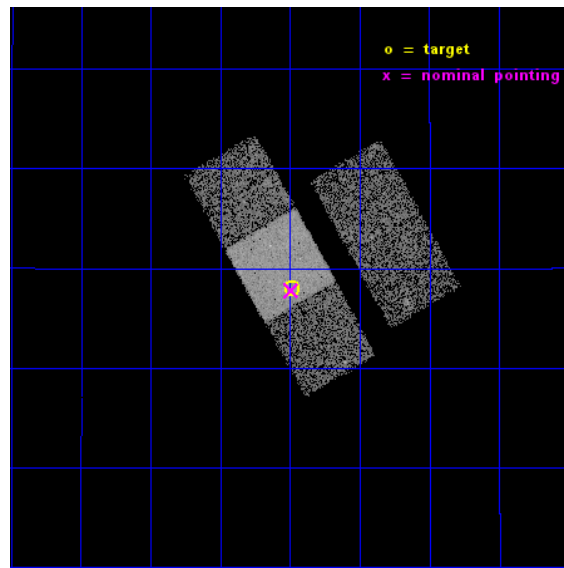
L2 Processing Date : Dec 11 2014

## Contents

<b>1</b>	<b>Front</b>	<b>2</b>
<b>2</b>	<b>OBI</b>	<b>3</b>
2.1	OBI . . . . .	3
2.1.1	Images . . . . .	3
2.1.2	Bias . . . . .	3
2.1.3	Parameters . . . . .	4
2.1.4	Events . . . . .	4
2.2	Compared Parameters . . . . .	5
2.3	Aspect . . . . .	6
2.4	Star Slots . . . . .	9
2.4.1	Slot 3 . . . . .	9
2.4.2	Slot 4 . . . . .	10
2.4.3	Slot 5 . . . . .	11
2.4.4	Slot 6 . . . . .	12
2.4.5	Slot 7 . . . . .	13
2.5	FID Slots . . . . .	14
2.5.1	Slot 0 . . . . .	14
2.5.2	Slot 1 . . . . .	15
2.5.3	Slot 2 . . . . .	16
<b>A</b>	<b>Summary</b>	<b>17</b>
A.1	Status . . . . .	17
A.2	Comments . . . . .	17

# 1 Front

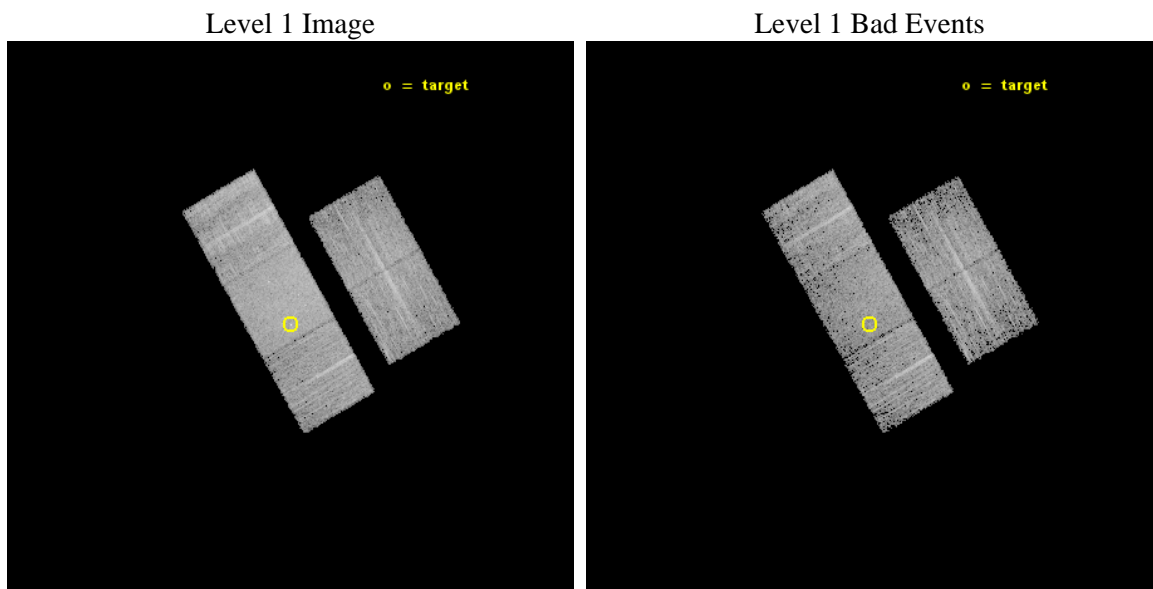
seq_num	703003	Sequence number
obs_id	16115	Observation id
title	A Pilot Search for Spatially Offset AGN in Galaxy Merger Remnants	&#160
observer	Dr. Julia Comerford	Principal investigator
object	SDSS J135429.05+132757.2	Source name
dtcycle	0	&#160
cycle	P	events from which exps? Prim/Second/Both
ra_targ	208.62125	Observer's specified target RA [deg]
dec_targ	13.465889	Observer's specified target Dec [deg]
ra_nom	208.62265985505	Nominal RA [deg]
dec_nom	13.463188537299	Nominal Dec [deg]
roll_nom	240.34804612412	Nominal Roll [deg]
revision	3	Processing version of data
ontime	9568.2979636788	Sum of GTIs [s]
livetime	9443.2811067049	Livetime [s]
ontime2	9568.1338036656	Sum of GTIs [s]
ontime3	9568.2158836722	Sum of GTIs [s]
ontime6	9568.2569236755	Sum of GTIs [s]
ontime7	9568.2979636788	Sum of GTIs [s]
ontime8	9565.0338233113	Sum of GTIs [s]
l2events	45903	Number of level 2 events



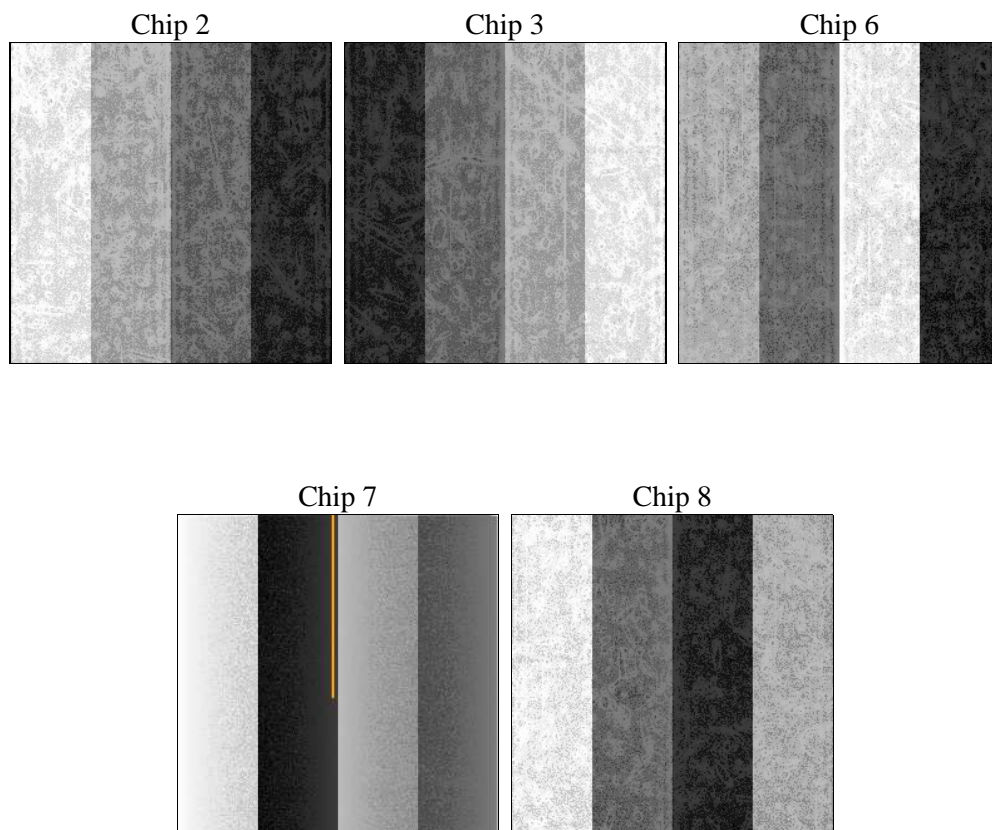
## 2 OBI

### 2.1 OBI

#### 2.1.1 Images



#### 2.1.2 Bias



### 2.1.3 Parameters

obi_num	0	Obi number	sched_exp_time	9500.000000	[s] Scheduled observation exposure time
ascdsver	10.3.1	Processing system revision	ontime	9568.2979636788	Sum of GTIs [s]
caldsver	4.6.4	&#160	ontime2	9568.1338036656	Sum of GTIs [s]
date	2014-12-12T02:40:14	Date and time of file creation	ontime3	9568.2158836722	Sum of GTIs [s]
revision	3	Processing version of data	ontime6	9568.2569236755	Sum of GTIs [s]
			ontime7	9568.2979636788	Sum of GTIs [s]
			ontime8	9565.0338233113	Sum of GTIs [s]
			l1events	244124	Number of level 1 events

### 2.1.4 Events

	ccd 2	ccd 3	ccd 6	ccd 7	ccd 8
level 1 events	41258	40396	43267	61543	57660
rejected events	35991	35366	37781	34267	42064
rejected %	87%	87%	87%	55%	72%

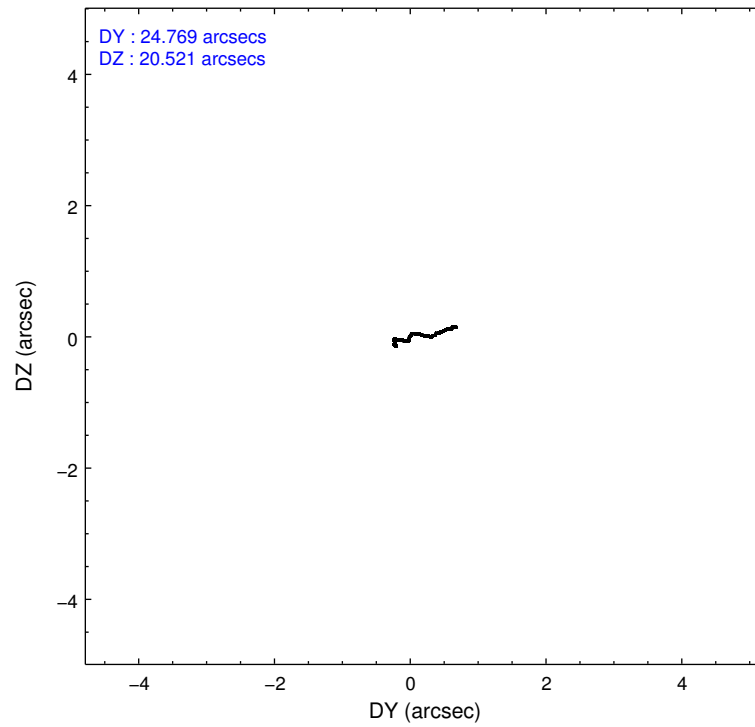
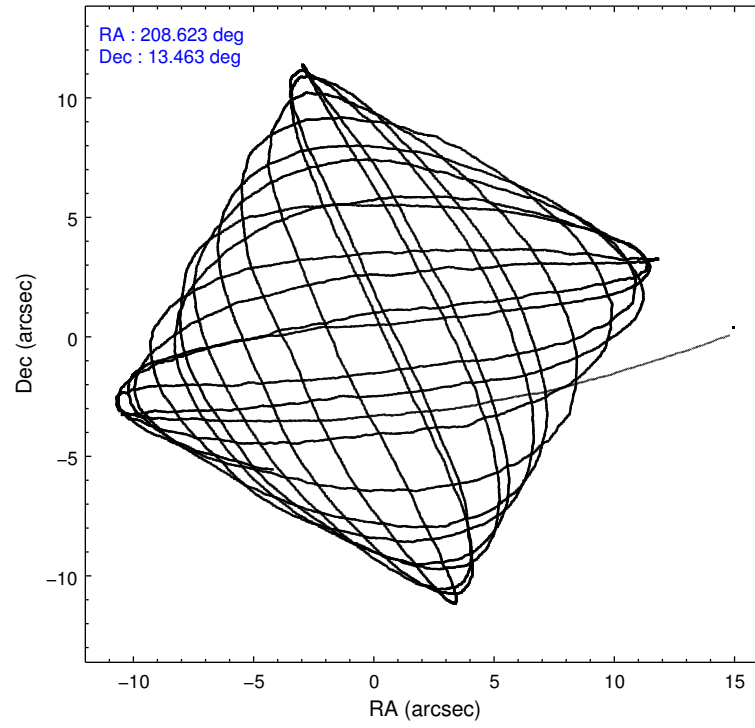
	ccd 2	ccd 3	ccd 6	ccd 7	ccd 8
grade 0 events	2028	1800	1933	2537	4350
	4%	4%	4%	4%	7%
grade 1 events	41	20	29	60	33
	0%	0%	0%	0%	0%
grade 2 events	1210	1135	1210	5418	3793
	2%	2%	2%	8%	6%
grade 3 events	504	541	571	2334	1552
	1%	1%	1%	3%	2%
grade 4 events	541	528	495	2367	1508
	1%	1%	1%	3%	2%
grade 5 events	1921	2339	2352	6232	3398
	4%	5%	5%	10%	5%
grade 6 events	985	1027	1281	14639	4417
	2%	2%	2%	23%	7%
grade 7 events	34028	33006	35396	27956	38609
	82%	81%	81%	45%	66%

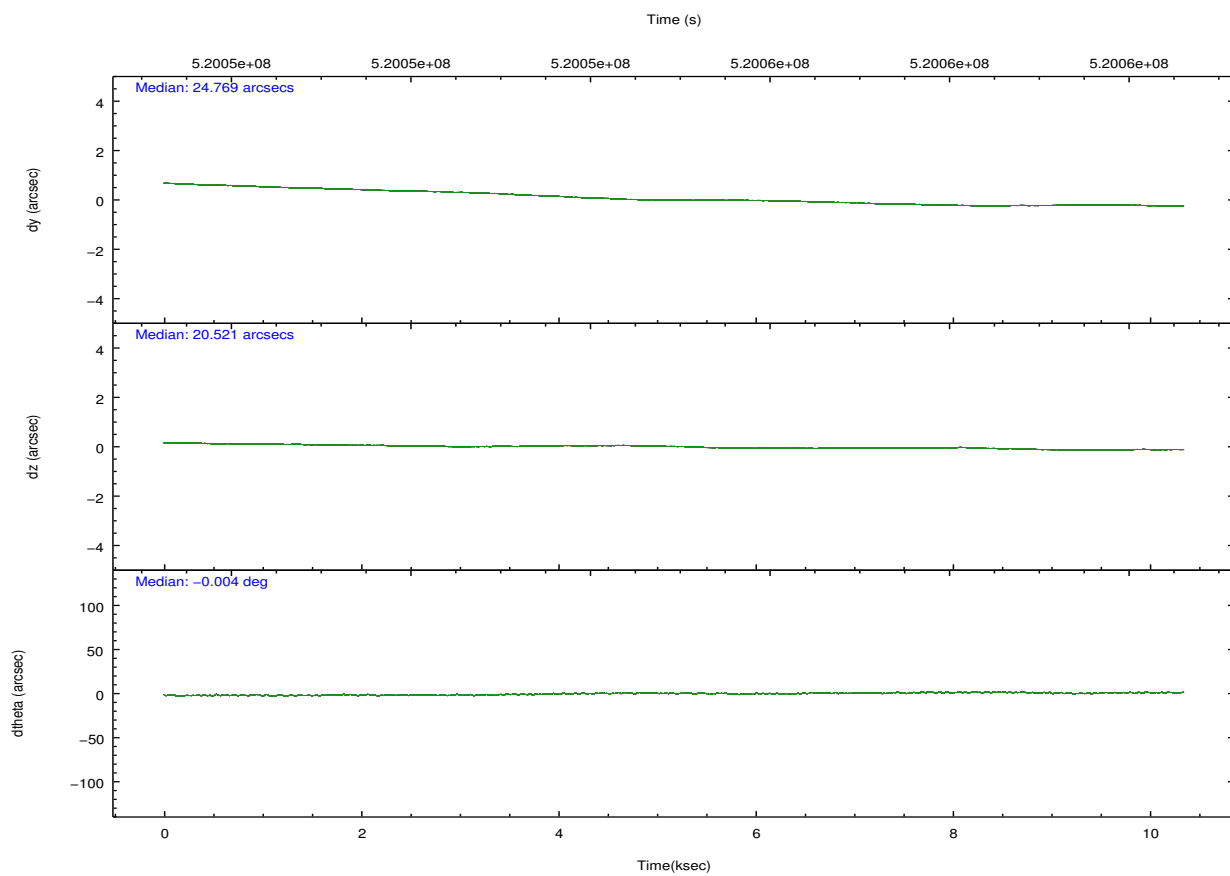
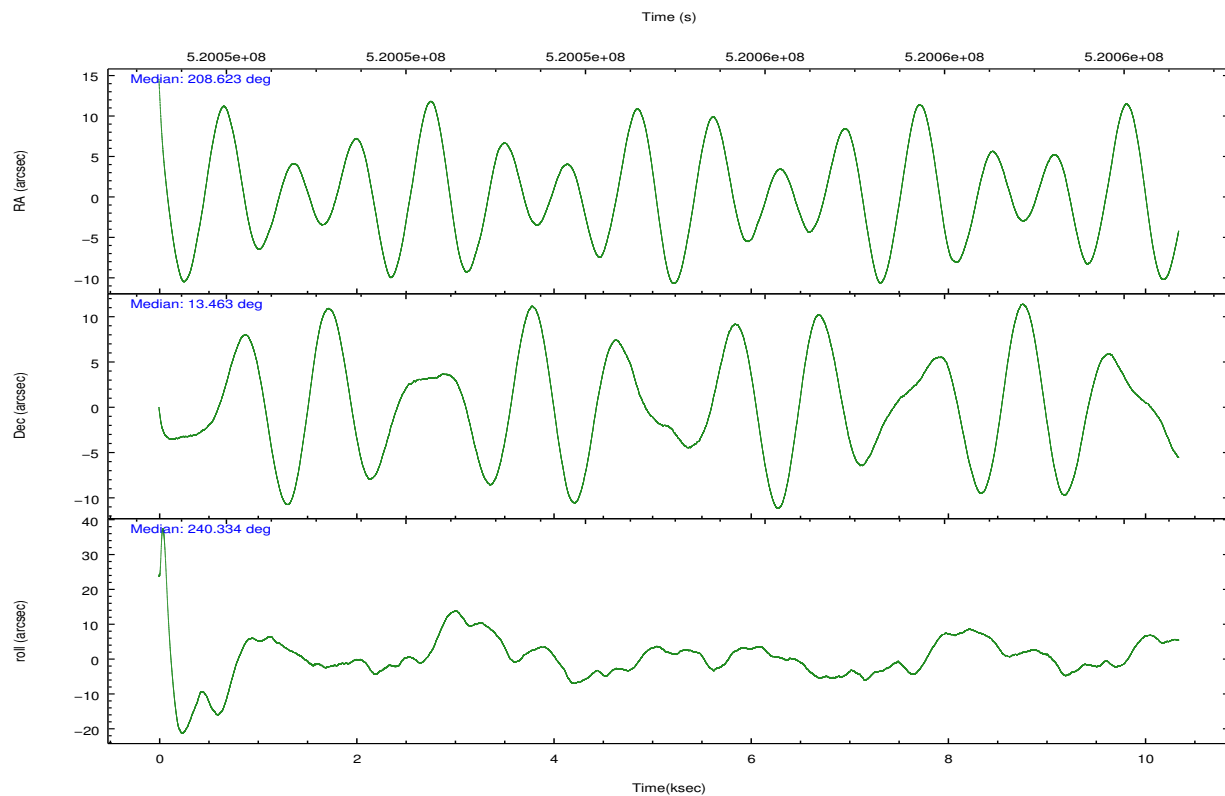


## 2.2 Compared Parameters

Parameter	Planned	Actual	Parameter	Planned	Actual
Instrument	ACIS	ACIS	Obspar format version number	7	7
Detector	ACIS-23678	ACIS-23678	Obspar file type	PREDICTED	ACTUAL
Grating	NONE	NONE	Obspar update status	NONE	UPDATED
Data mode	FAINT	FAINT	CCD I0 on	N	N
Observation mode	POINTING	POINTING	CCD I1 on	N	N
[deg] Pointing RA	208.622147	208.6226598550535	CCD I2 on	O1	Y
[deg] Pointing Dec	13.490554	13.46318853729935	CCD I3 on	O4	Y
[deg] Pointing Roll	240.191474	240.3480461241201	CCD S0 on	N	N
[mm] SIM focus pos	-0.684267	-0.6828225247311905	CCD S1 on	N	N
[mm] SIM defocus	0	0.001444936568705701	CCD S2 on	O2	Y
[mm] SIM translation stage pos	-190.132523	-190.1400660498719	CCD S3 on	Y	Y
[mm] SIM translation stage offset	0	0.00754346686406393	CCD S4 on	O3	Y
[s] Observation start time (MET)	520050597.184000	520048724.45295	CCD S5 on	N	N
Observation start date	2014-06-25T02:28:50	2014-06-25T01:58:44	Number of optional ACIS chips dropped	0	0
[s] Observation end time (MET)	520060097.184000	520061064.42864	On-chip summing requested	N	N
Observation end date	2014-06-25T05:07:10	2014-06-25T05:24:24	Subarray requested	NONE	NONE
Read mode	TIMED	TIMED	Alternating exposures requested	N	N
			[s] Primary exposure time	0.000000	3.1

## 2.3 Aspect



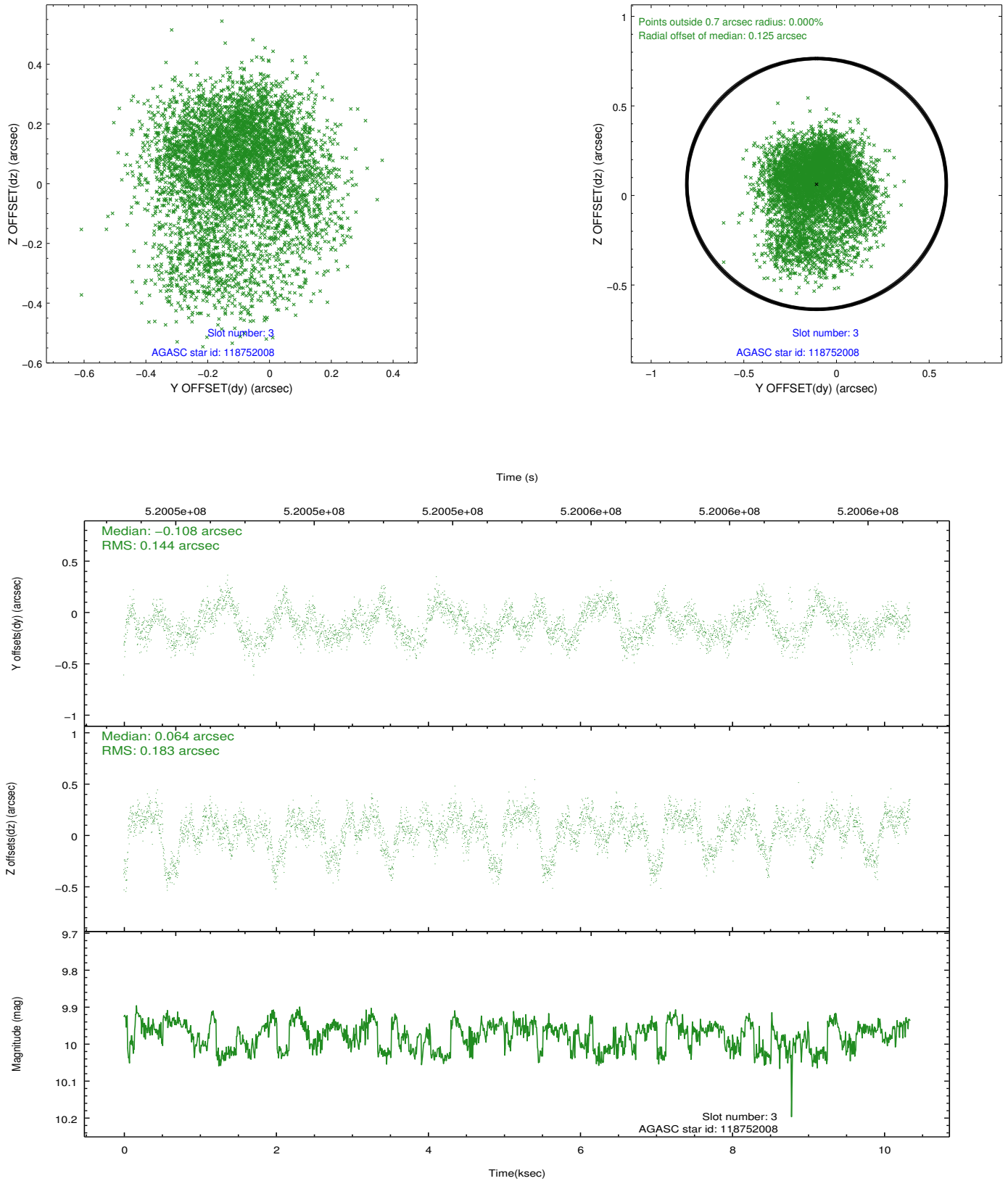


### Slot Statistics

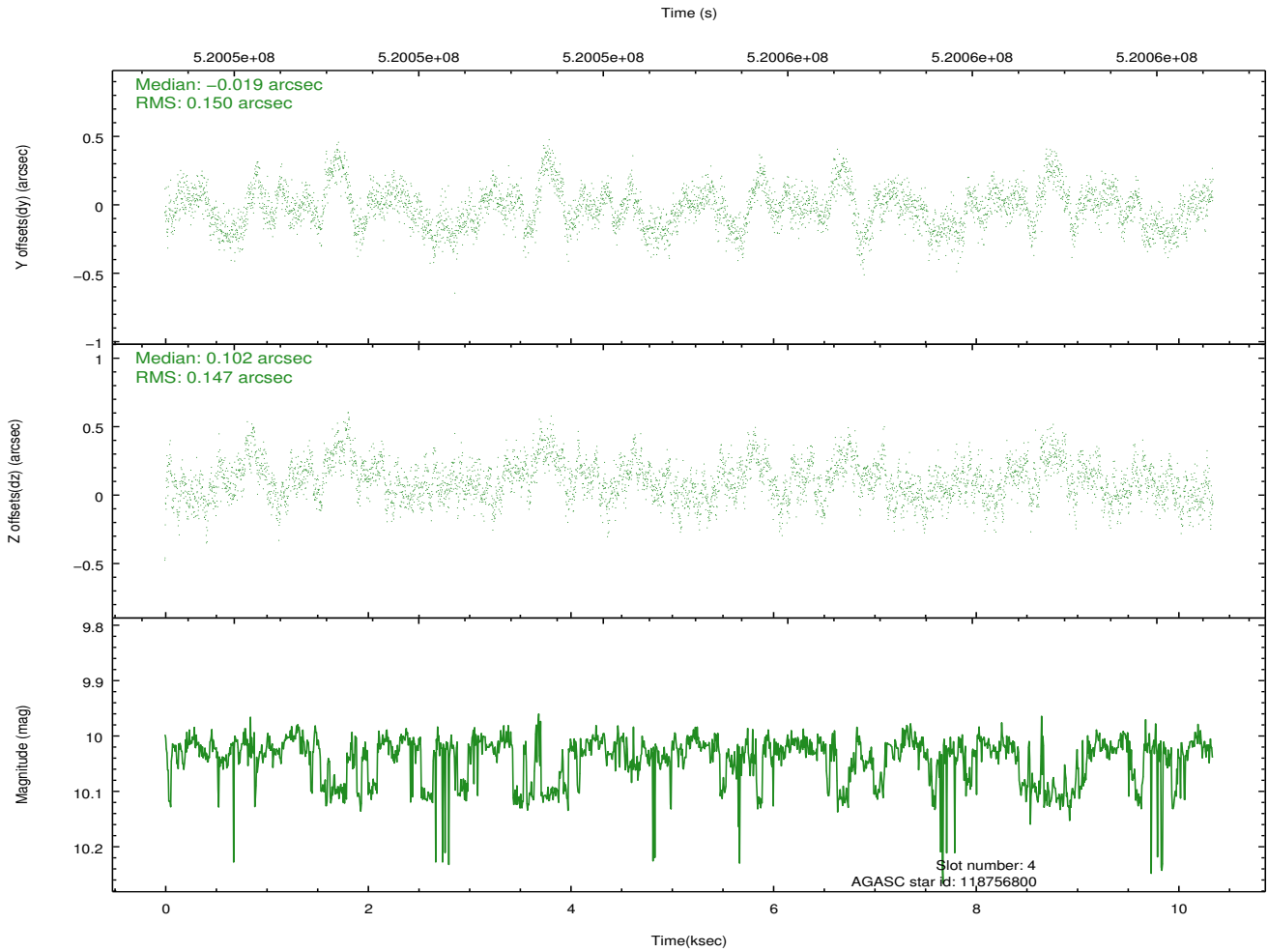
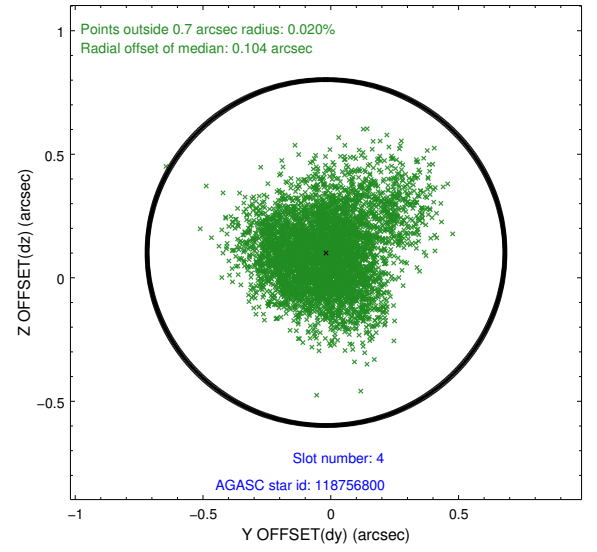
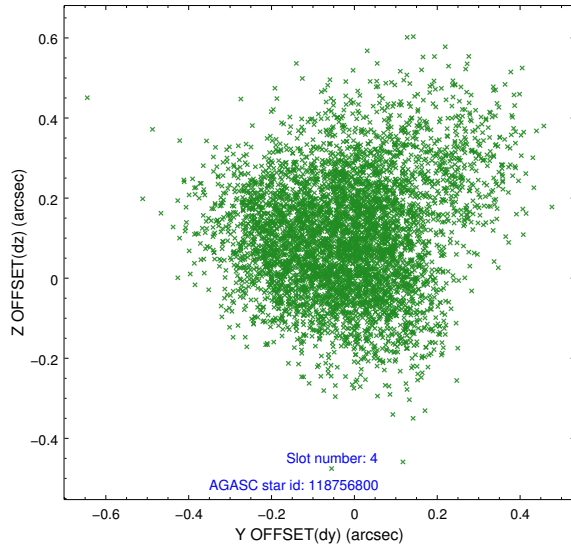
slot	status	used	id	mag	n_pts	med_dy	med_dz	dr1	dr2	ra	dec	mean_y	mean_z
0	FID		ACIS-S-3	7.21	2522	-0.025	-0.045	0.009	0.016	0.000000	0.000000	35.07	-1871.15
1	FID		ACIS-S-5	7.09	2524	-0.160	-0.053	0.011	0.020	0.000000	0.000000	-1831.28	159.30
2	FID		ACIS-S-6	7.18	2523	0.161	0.107	0.009	0.015	0.000000	0.000000	383.12	803.99
3	GUIDE	used	118752008	9.97	4917	-0.108	0.064	0.241	0.422	208.826224	12.762290	1918.47	1925.28
4	GUIDE	used	118756800	10.03	5042	-0.019	0.102	0.221	0.365	207.894014	13.411593	1512.08	-2072.17
5	GUIDE	used	118757936	9.31	5043	0.062	0.046	0.146	0.240	208.247938	13.052076	2020.98	-356.21
6	GUIDE	used	118756512	9.08	5038	-0.062	-0.192	0.130	0.210	208.364820	12.942594	2170.11	199.91
7	GUIDE	used	118758136	9.70	5042	0.117	0.005	0.206	0.333	208.544345	12.897103	1990.48	824.14

## 2.4 Star Slots

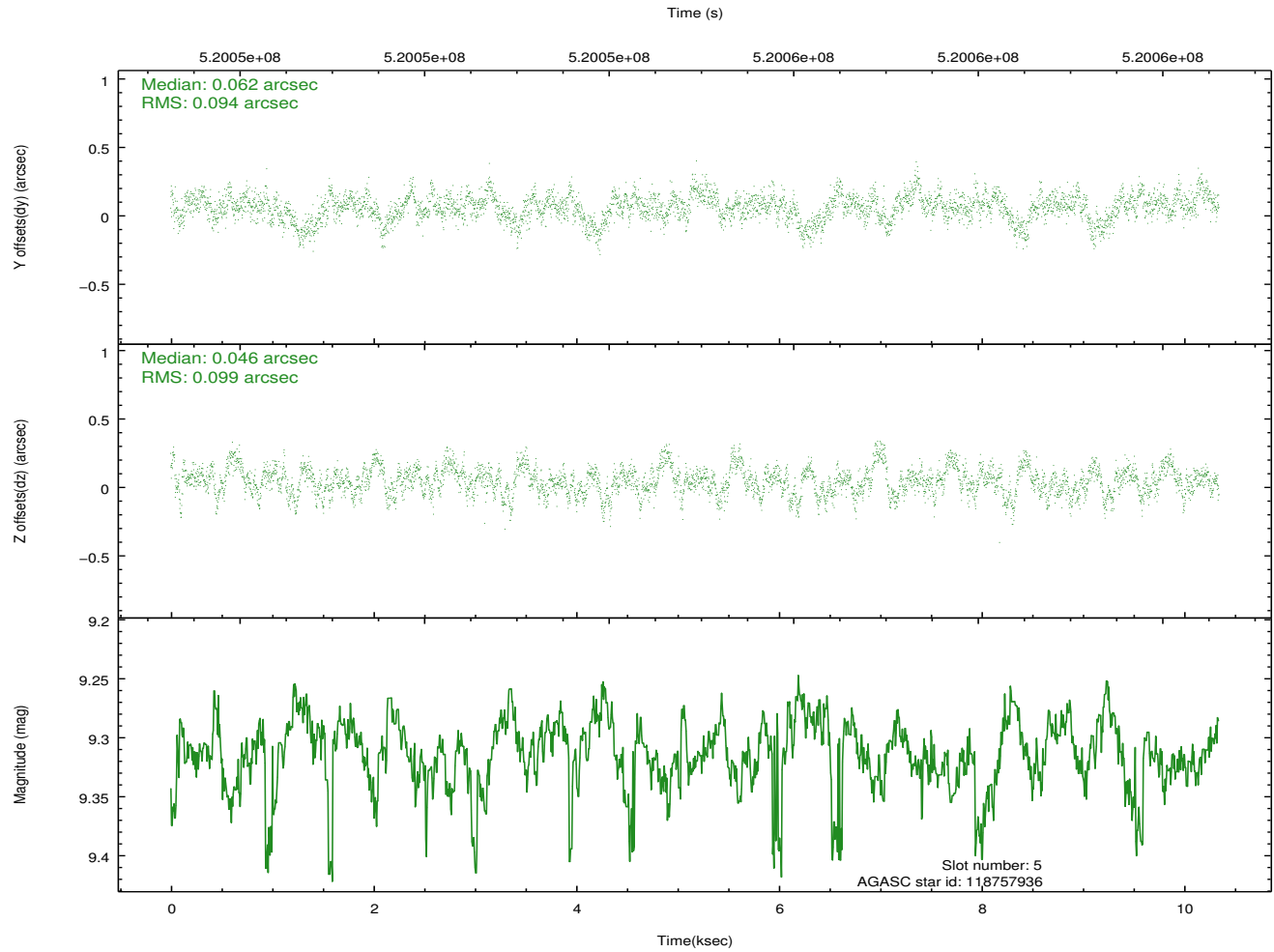
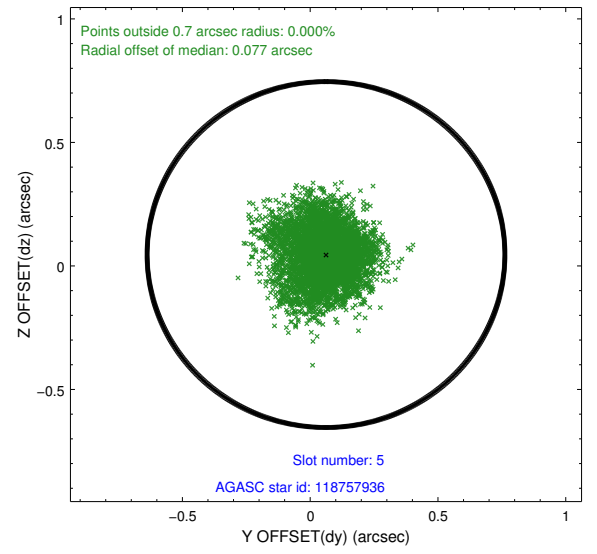
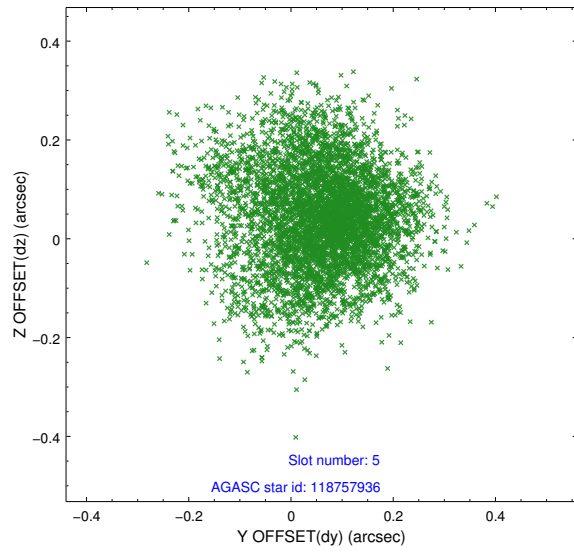
### 2.4.1 Slot 3



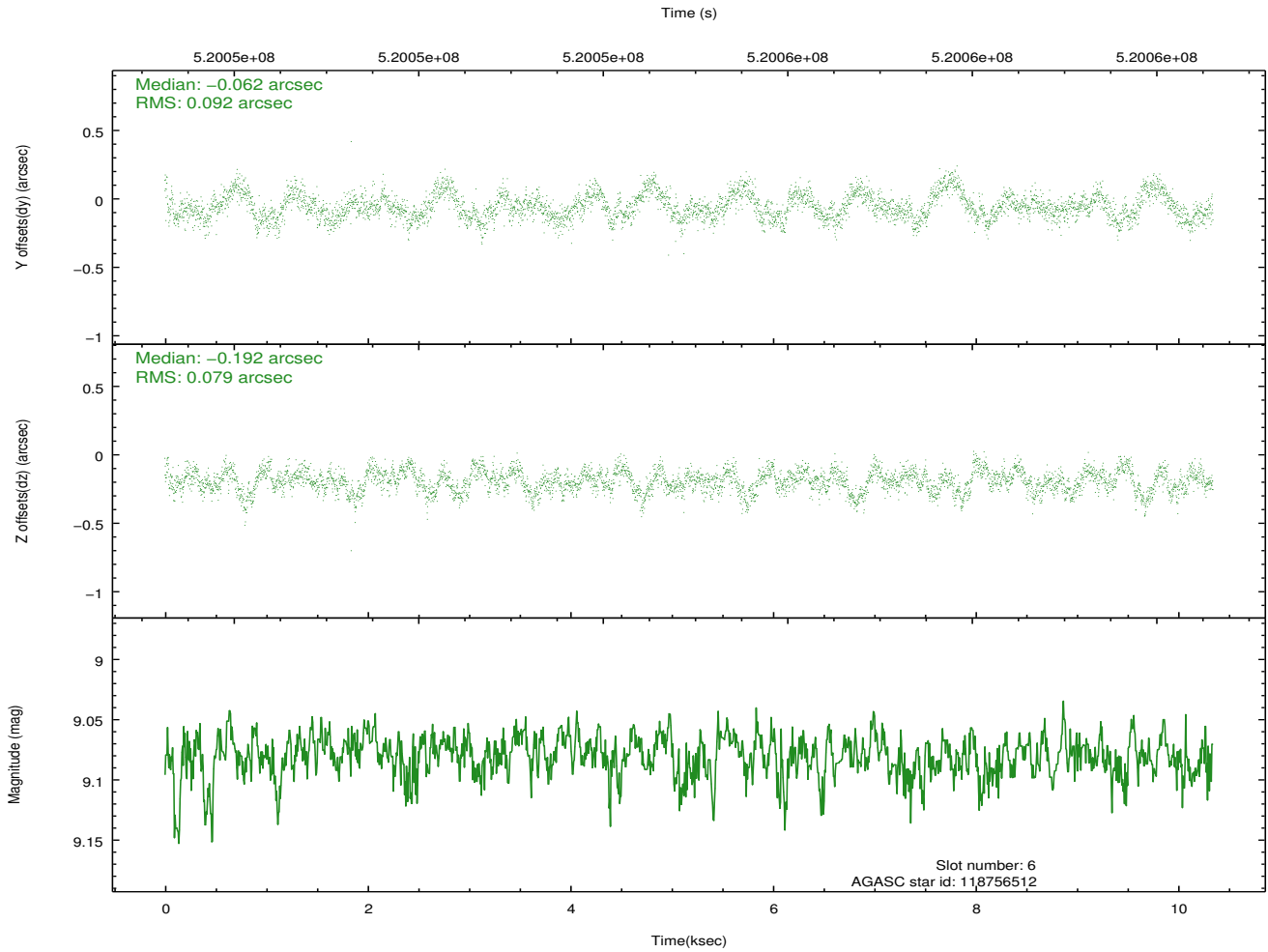
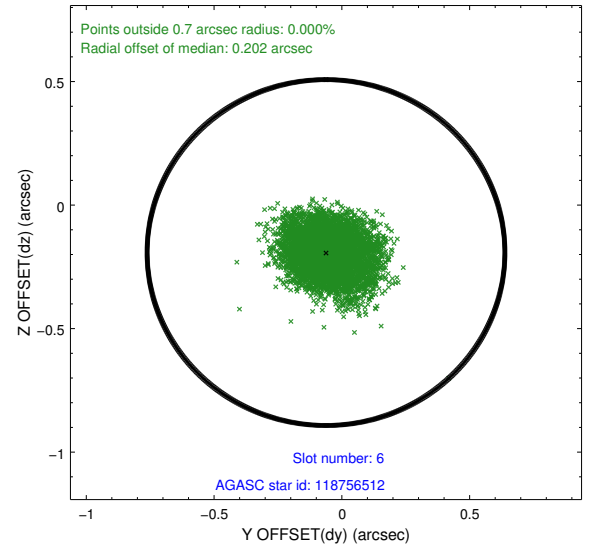
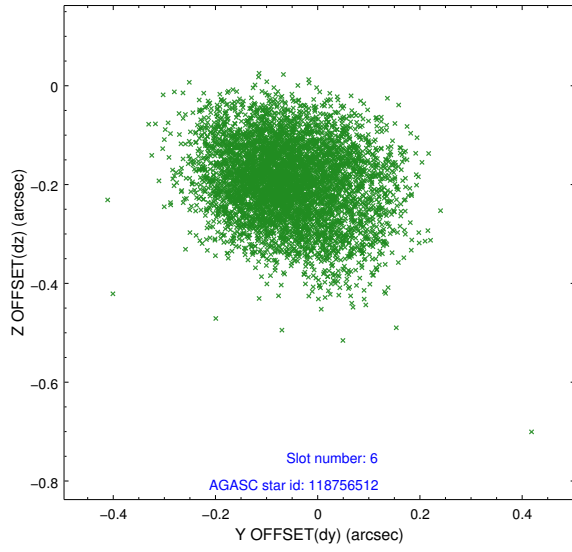
## 2.4.2 Slot 4



### 2.4.3 Slot 5

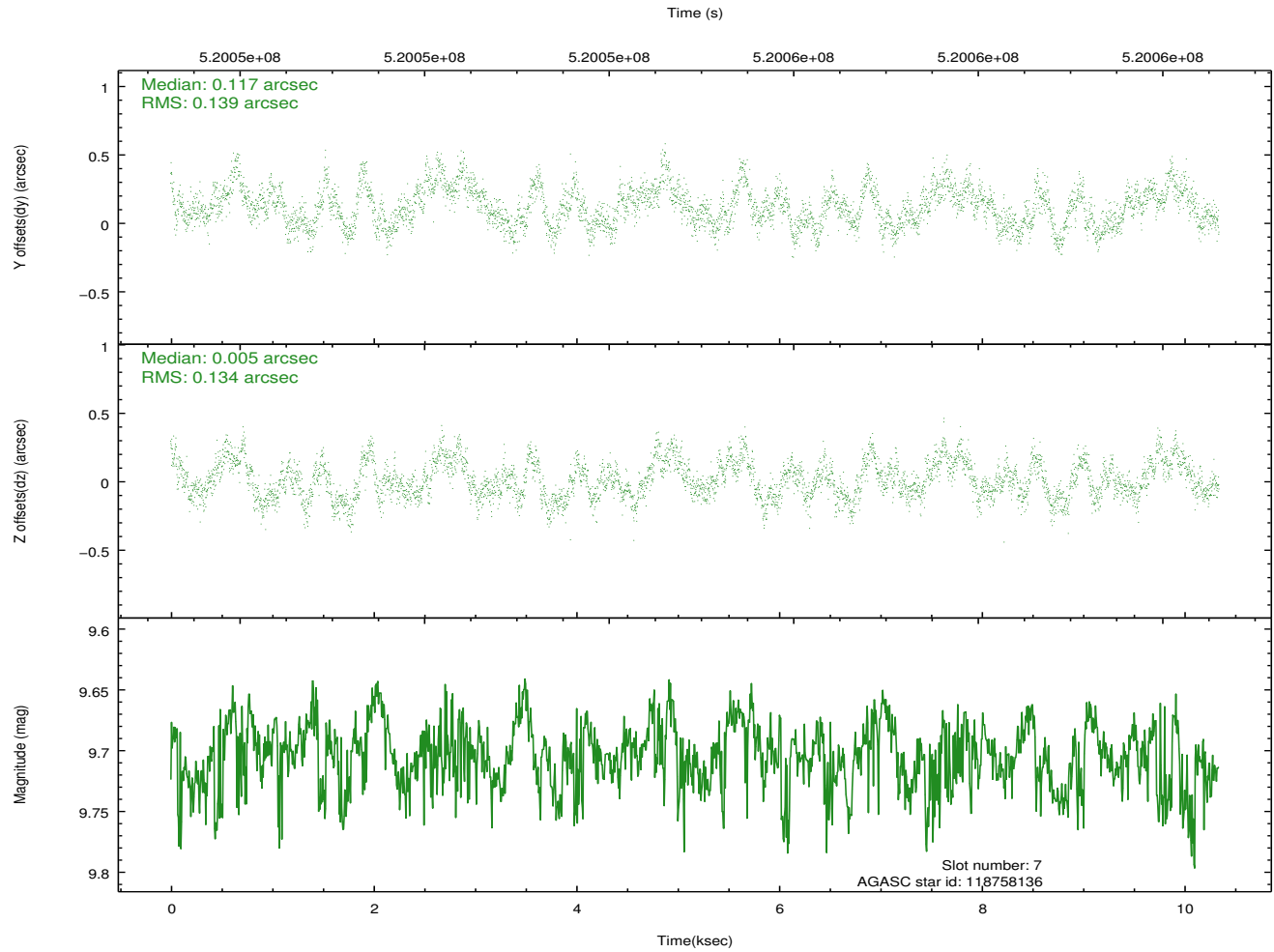
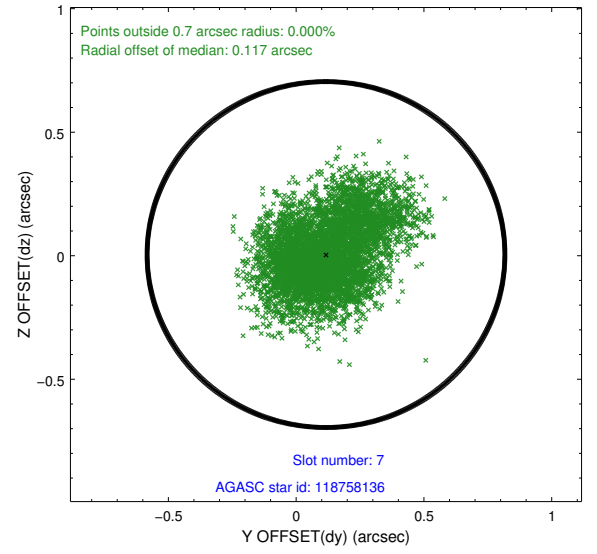
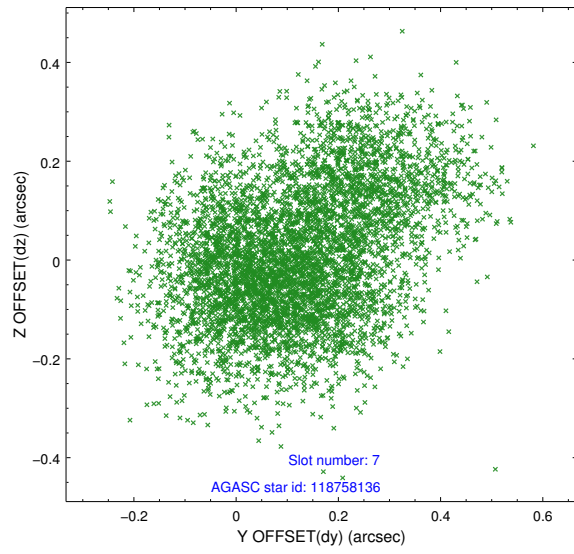


## 2.4.4 Slot 6



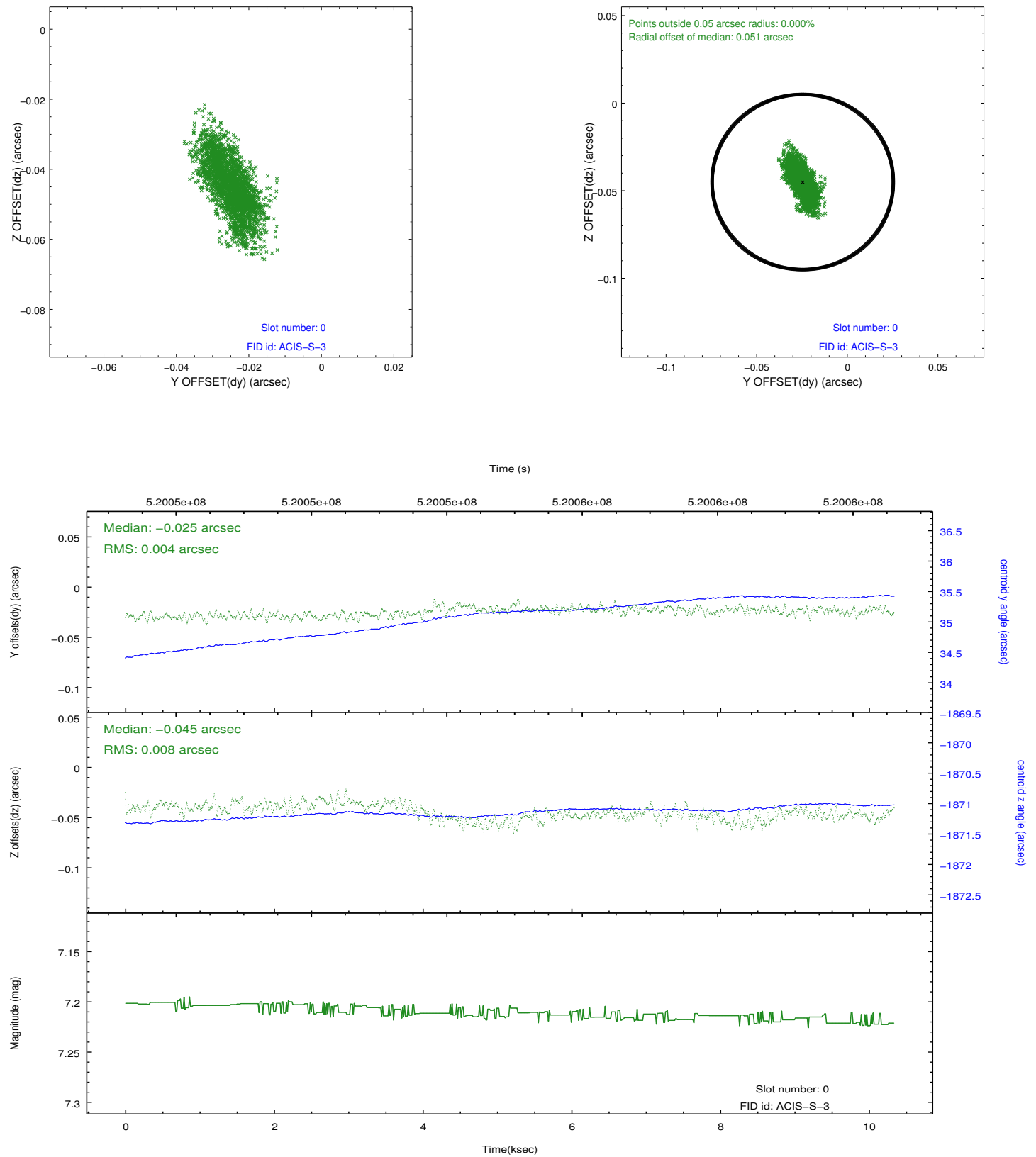


## 2.4.5 Slot 7

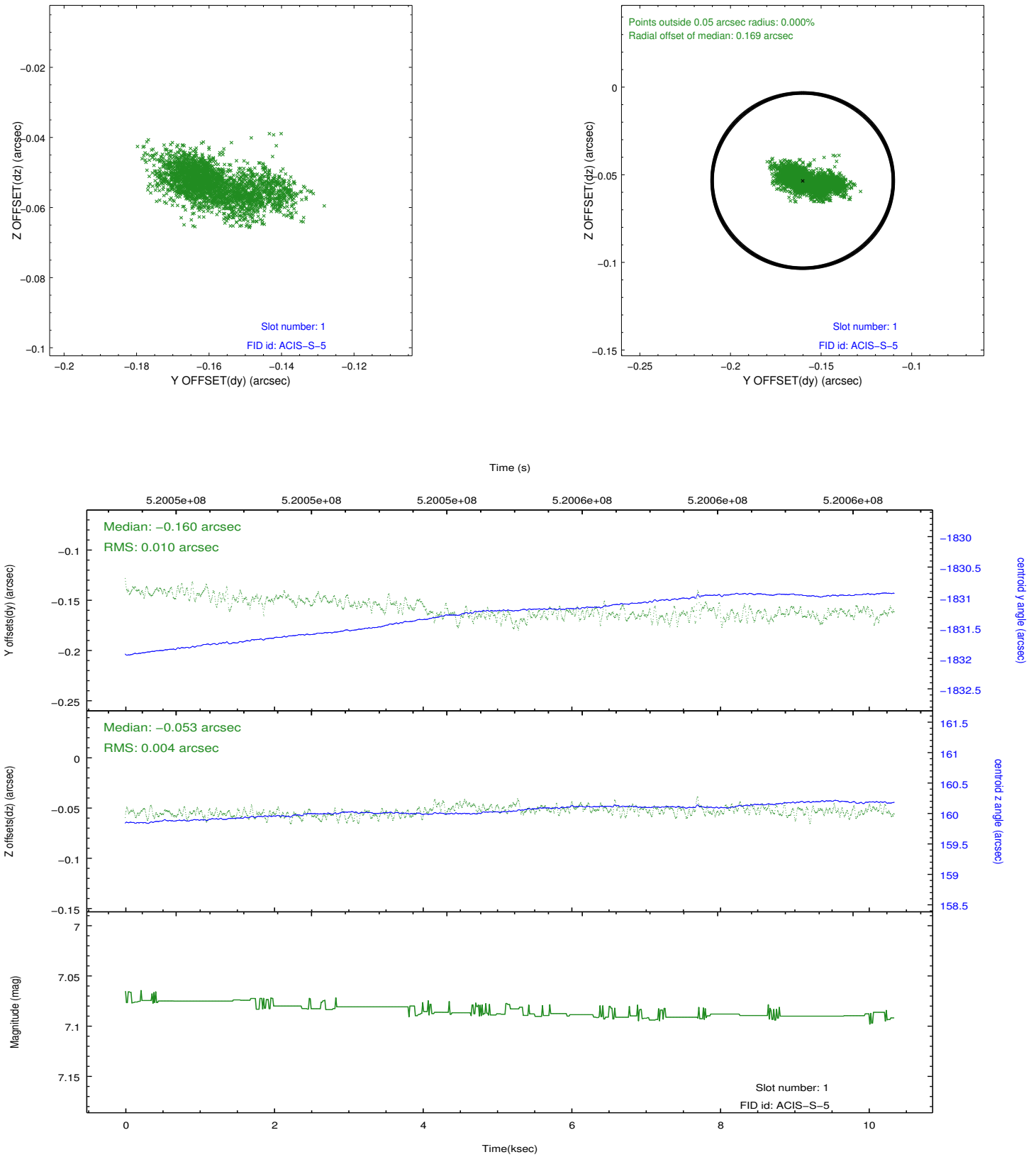


## 2.5 FID Slots

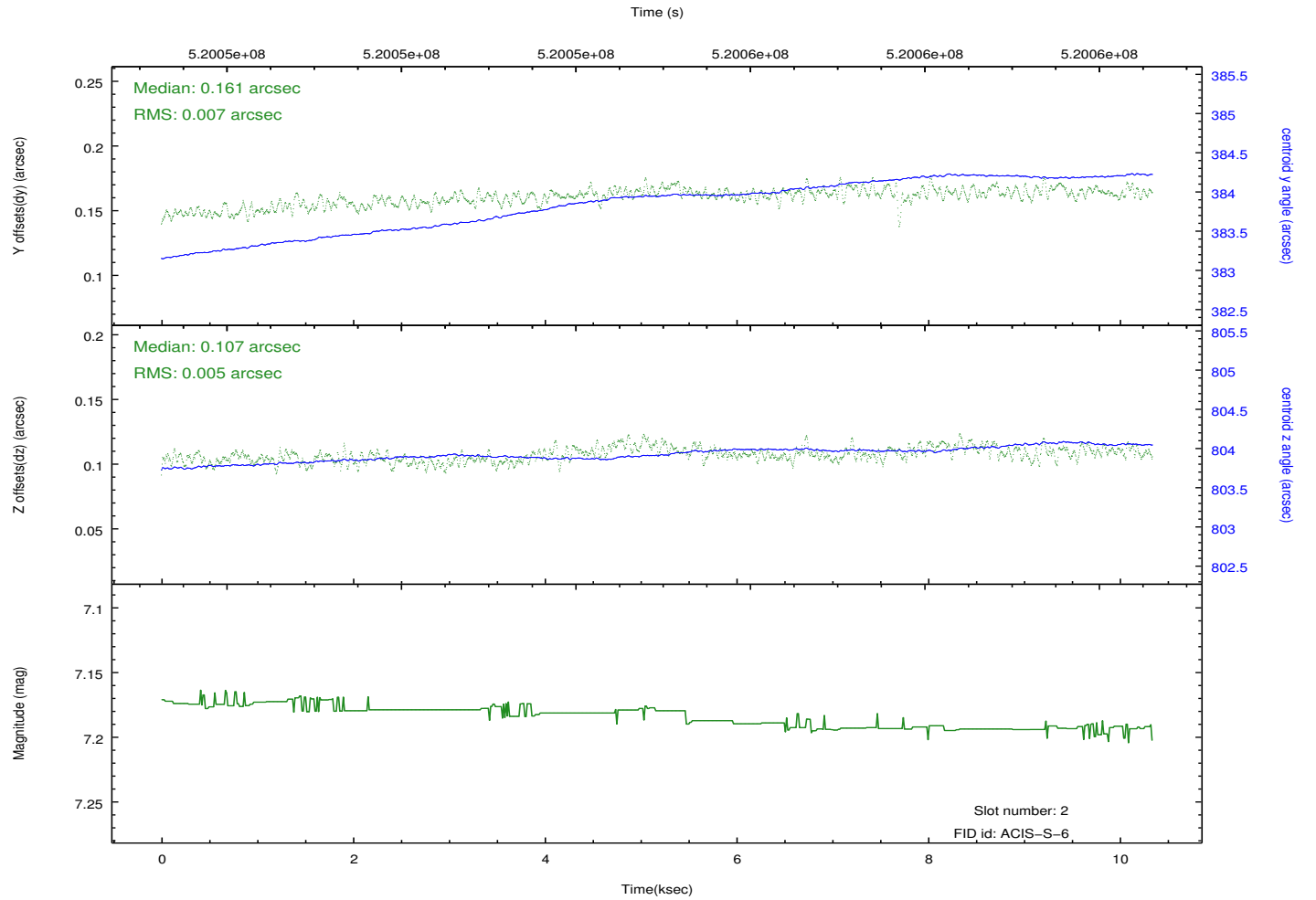
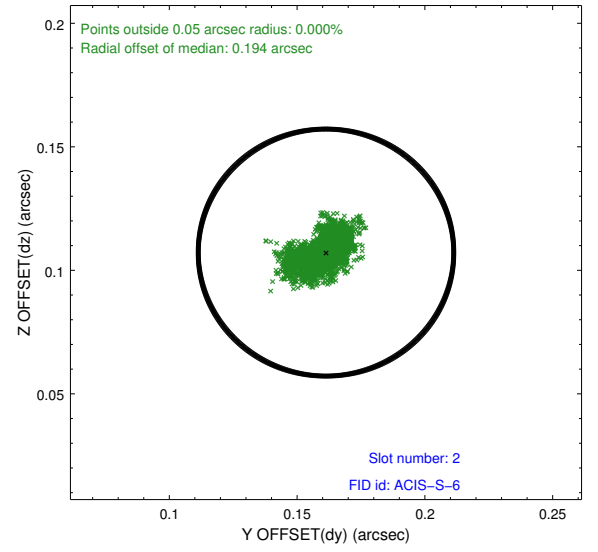
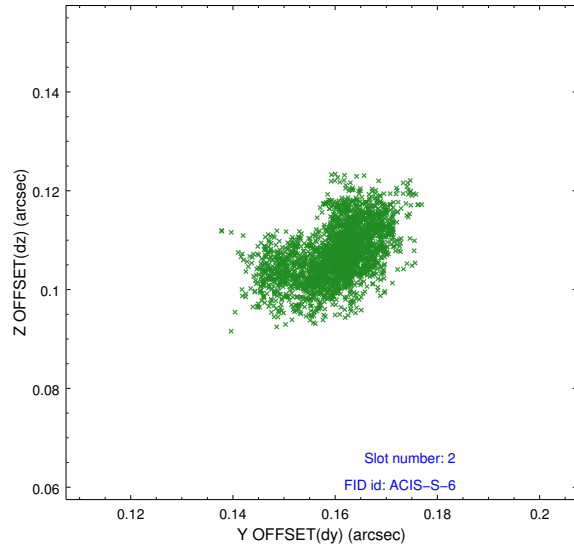
### 2.5.1 Slot 0



## 2.5.2 Slot 1



### 2.5.3 Slot 2



# A Summary

## A.1 Status

V&V Scientist	Jen Lauer
V&V Date (YYYY-MM-DD)	2014.12.18
V&V Edition	1
V&V Disposition and Status	OK
V&V Charge Time	9.5682979636788

## A.2 Comments

Joint Proposal: HST

=====

These data have been reprocessed with new aspect alignment calibration files that correct small mean offsets (up to 0.4 arcsecs) and improve overall astrometric accuracy. The new calibration was determined using data from the time period being reprocessed and was performed using cross-correlation of X-ray sources with radio and optical counterparts.