

# V&V Reference Report

## L2 ASCDS Version : 10.2.4

Observation 16114 - L2 Version 1  
Chandra X-Ray Center

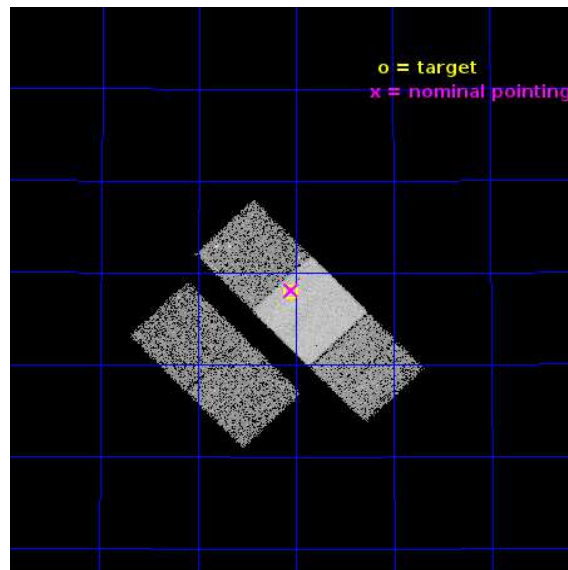
L2 Processing Date : Sep 4 2014

## Contents

<b>1</b>	<b>Front</b>	<b>2</b>
<b>2</b>	<b>OBI</b>	<b>3</b>
2.1	OBI . . . . .	3
2.1.1	Images . . . . .	3
2.1.2	Bias . . . . .	3
2.1.3	Parameters . . . . .	4
2.1.4	Events . . . . .	4
2.2	Compared Parameters . . . . .	5
2.3	Aspect . . . . .	6
2.4	Star Slots . . . . .	9
2.4.1	Slot 3 . . . . .	9
2.4.2	Slot 4 . . . . .	10
2.4.3	Slot 5 . . . . .	11
2.4.4	Slot 6 . . . . .	12
2.4.5	Slot 7 . . . . .	13
2.5	FID Slots . . . . .	14
2.5.1	Slot 0 . . . . .	14
2.5.2	Slot 1 . . . . .	15
2.5.3	Slot 2 . . . . .	16
<b>A</b>	<b>Summary</b>	<b>17</b>
A.1	Status . . . . .	17
A.2	Comments . . . . .	17

# 1 Front

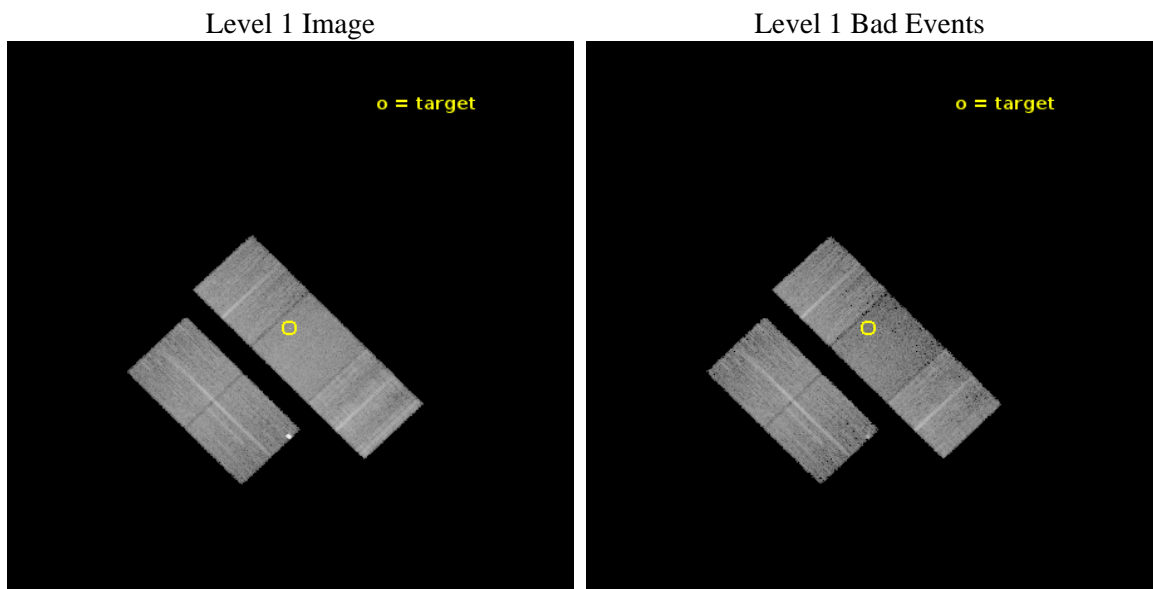
seq_num	703002	Sequence number
obs_id	16114	Observation id
title	A Pilot Search for Spatially Offset AGN in Galaxy Merger Remnants	&#160
observer	Dr. Julia Comerford	Principal investigator
object	SDSS J083902.97+470756.3	Source name
dtcycle	0	&#160
cycle	P	events from which exps? Prim/Second/Both
ra_targ	129.7625	Observer's specified target RA [deg]
dec_targ	47.132306	Observer's specified target Dec [deg]
ra_nom	129.76151038013	Nominal RA [deg]
dec_nom	47.135324484867	Nominal Dec [deg]
roll_nom	45.711017445547	Nominal Roll [deg]
revision	1	Processing version of data
ontime	10058.868334055	Sum of GTIs [s]
livetime	9927.4418140394	Livetime [s]
ontime2	10058.704174042	Sum of GTIs [s]
ontime3	10058.786254048	Sum of GTIs [s]
ontime6	10058.827294052	Sum of GTIs [s]
ontime7	10058.868334055	Sum of GTIs [s]
ontime8	10058.745214045	Sum of GTIs [s]
l2events	67451	Number of level 2 events



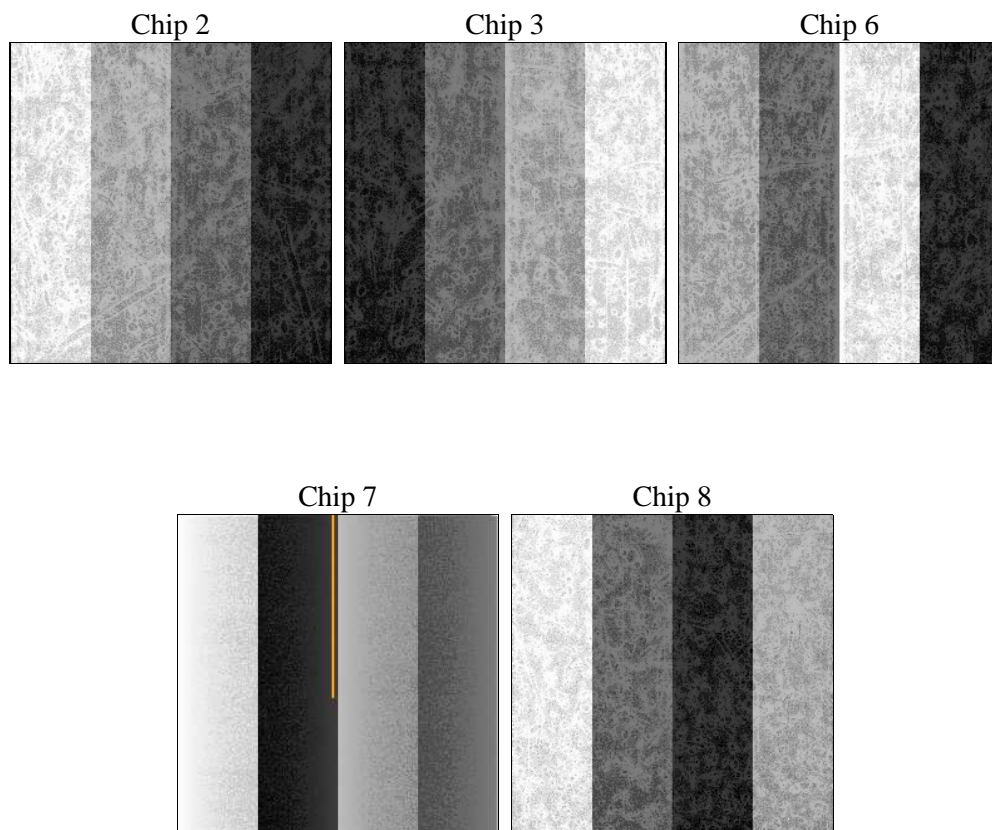
## 2 OBI

### 2.1 OBI

#### 2.1.1 Images



#### 2.1.2 Bias



### 2.1.3 Parameters

obi_num	0	Obi number	sched_exp_time	10000.000000	[s] Scheduled observation exposure time
ascdsver	10.2.4	Processing system revision	ontime	10058.868334055	Sum of GTIs [s]
caldsver	4.6.3	&#160	ontime2	10058.704174042	Sum of GTIs [s]
date	2014-09-04T06:56:50	Date and time of file creation	ontime3	10058.786254048	Sum of GTIs [s]
revision	1	Processing version of data	ontime6	10058.827294052	Sum of GTIs [s]
			ontime7	10058.868334055	Sum of GTIs [s]
			ontime8	10058.745214045	Sum of GTIs [s]
			l1events	413991	Number of level 1 events

### 2.1.4 Events

	ccd 2	ccd 3	ccd 6	ccd 7	ccd 8
level 1 events	75500	77368	76906	81870	102347
rejected events	67448	63593	67916	42952	69385
rejected %	89%	82%	88%	52%	67%

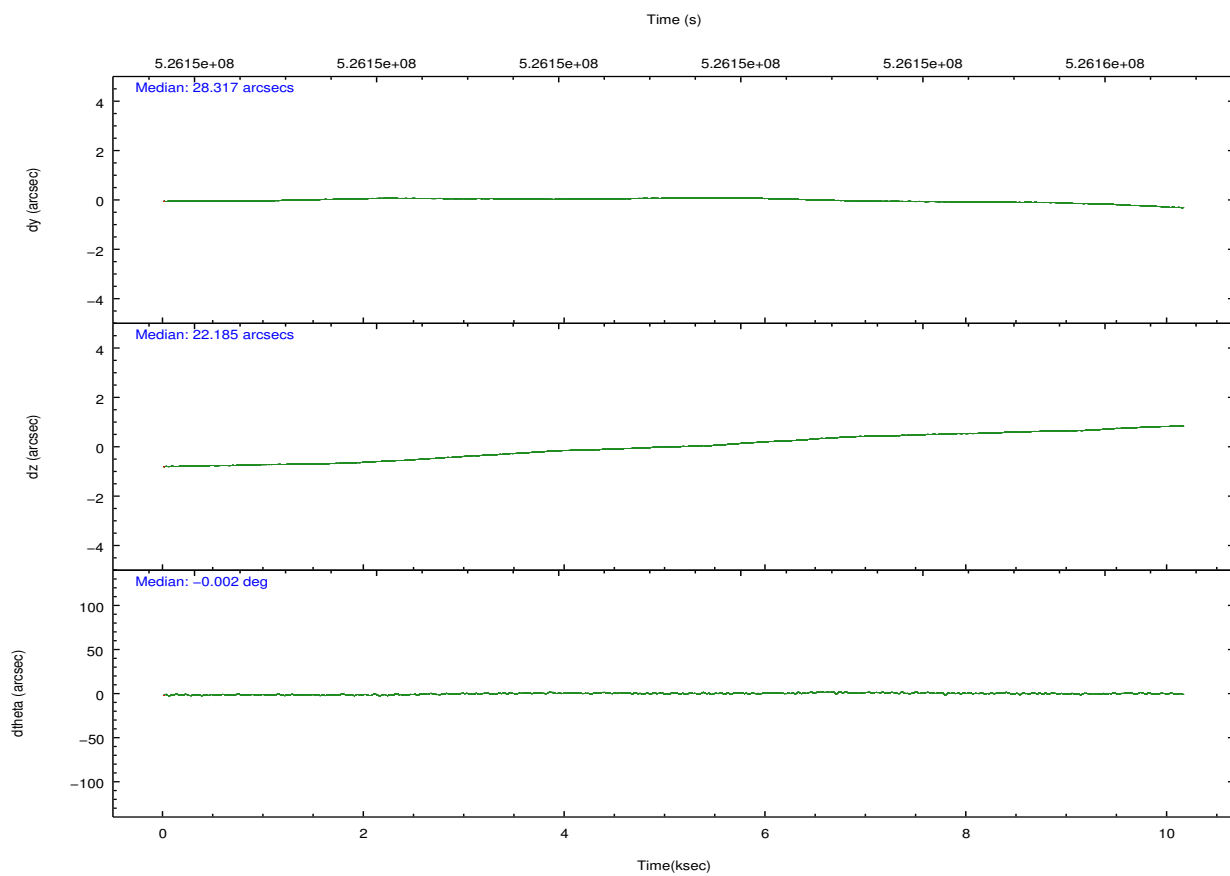
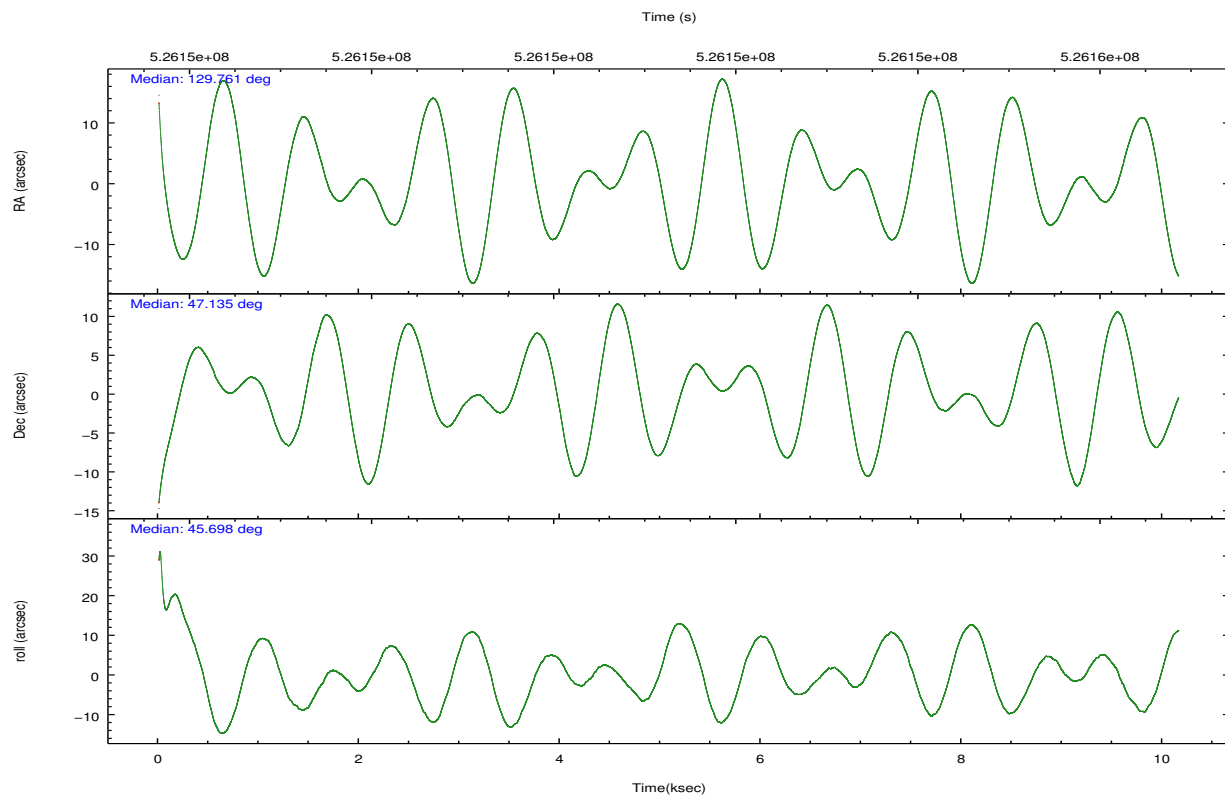
	ccd 2	ccd 3	ccd 6	ccd 7	ccd 8
grade 0 events	3169	6100	3562	3736	11056
	4%	7%	4%	4%	10%
grade 1 events	28	47	39	126	80
	0%	0%	0%	0%	0%
grade 2 events	1897	4682	1918	8585	7360
	2%	6%	2%	10%	7%
grade 3 events	780	777	867	3332	3862
	1%	1%	1%	4%	3%
grade 4 events	772	791	867	3275	3383
	1%	1%	1%	4%	3%
grade 5 events	2251	2779	2843	7728	4256
	2%	3%	3%	9%	4%
grade 6 events	1437	1434	1781	20024	7310
	1%	1%	2%	24%	7%
grade 7 events	65166	60758	65029	35064	65040
	86%	78%	84%	42%	63%



## 2.2 Compared Parameters

Parameter	Planned	Actual	Parameter	Planned	Actual
Instrument	ACIS	ACIS	Obspar format version number	7	7
Detector	ACIS-23678	ACIS-23678	Obspar file type	PREDICTED	ACTUAL
Grating	NONE	NONE	Obspar update status	NONE	UPDATED
Data mode	FAINT	FAINT	CCD I0 on	N	N
Observation mode	POINTING	POINTING	CCD I1 on	N	N
[deg] Pointing RA	129.752090	129.7615103801261	CCD I2 on	O1	Y
[deg] Pointing Dec	47.108663	47.13532448486652	CCD I3 on	O4	Y
[deg] Pointing Roll	45.561260	45.71101744554723	CCD S0 on	N	N
[mm] SIM focus pos	-0.684267	-0.6828225247311905	CCD S1 on	N	N
[mm] SIM defocus	0	0.001444936568705701	CCD S2 on	O2	Y
[mm] SIM translation stage pos	-190.132523	-190.1425803651734	CCD S3 on	Y	Y
[mm] SIM translation stage offset	0	0.01005778216563158	CCD S4 on	O3	Y
[s] Observation start time (MET)	526146345.184000	526145203.9033	CCD S5 on	N	N
Observation start date	2014-09-03T15:44:38	2014-09-03T15:26:43	Number of optional ACIS chips dropped	0	0
[s] Observation end time (MET)	526156345.184000	526157204.09147	On-chip summing requested	N	N
Observation end date	2014-09-03T18:31:18	2014-09-03T18:46:44	Subarray requested	NONE	NONE
Read mode	TIMED	TIMED	Alternating exposures requested	N	N
			[s] Primary exposure time	0.000000	3.1

## 2.3 Aspect

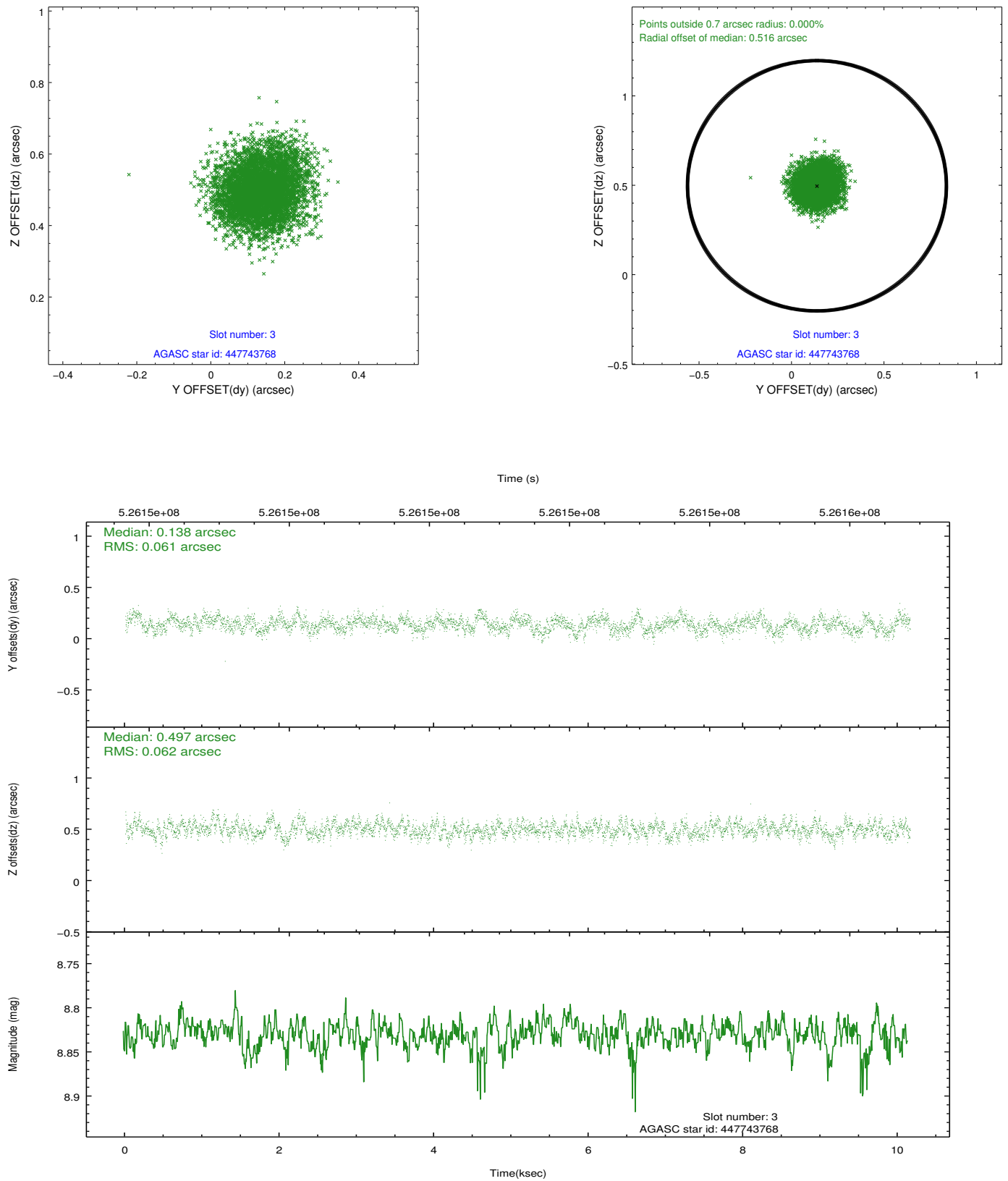


### Slot Statistics

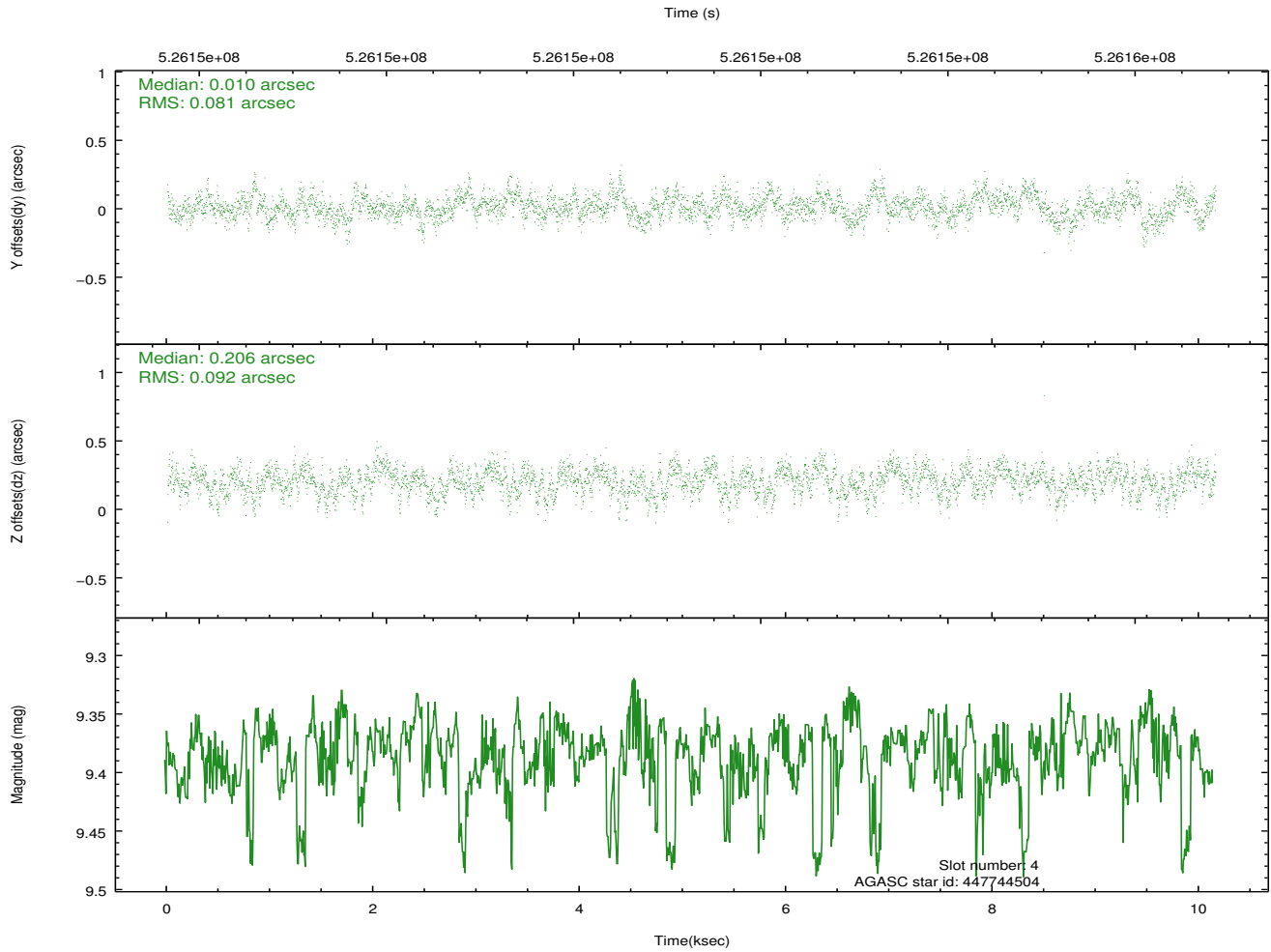
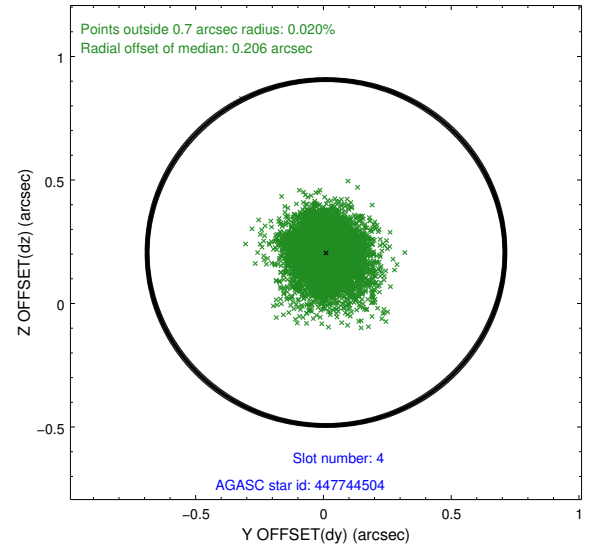
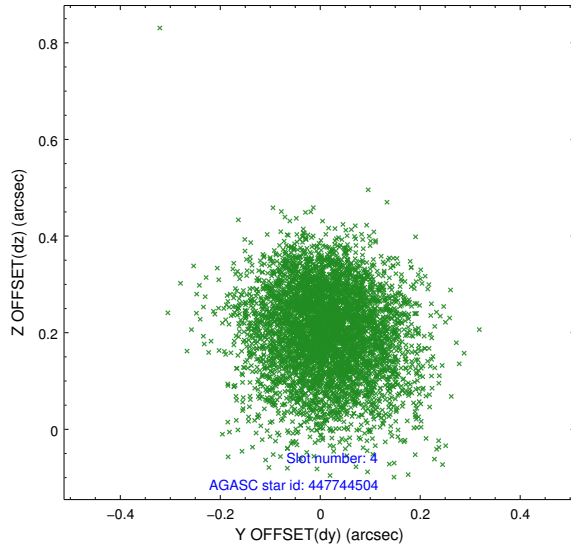
slot	status	id	mag	n_pts	med_dy	med_dz	dr1	dr2	ra	dec	mean_y	mean_z
0	FID	ACIS-S-2	7.02	2478	-0.041	-0.047	0.016	0.028	0.000000	0.000000	-781.72	-1743.72
1	FID	ACIS-S-5	7.14	2478	-0.163	-0.052	0.019	0.030	0.000000	0.000000	-1835.14	157.73
2	FID	ACIS-S-6	7.25	2477	0.178	0.107	0.014	0.022	0.000000	0.000000	379.62	802.32
3	GUIDE	447743768	8.83	4949	0.138	0.497	0.093	0.148	129.378303	46.791113	-1459.64	-140.88
4	GUIDE	447744504	9.38	4949	0.010	0.206	0.131	0.212	130.406976	46.965618	762.86	-1504.58
5	GUIDE	447749464	7.18	4955	0.215	-0.182	0.110	0.173	128.624054	47.139629	-1839.76	2063.51
6	GUIDE	447752320	7.80	4952	0.055	0.006	0.093	0.156	129.373107	47.120240	-620.05	694.09
7	GUIDE	448149888	8.77	4950	-0.428	-0.525	0.127	0.210	129.248001	47.556681	296.48	2006.27

## 2.4 Star Slots

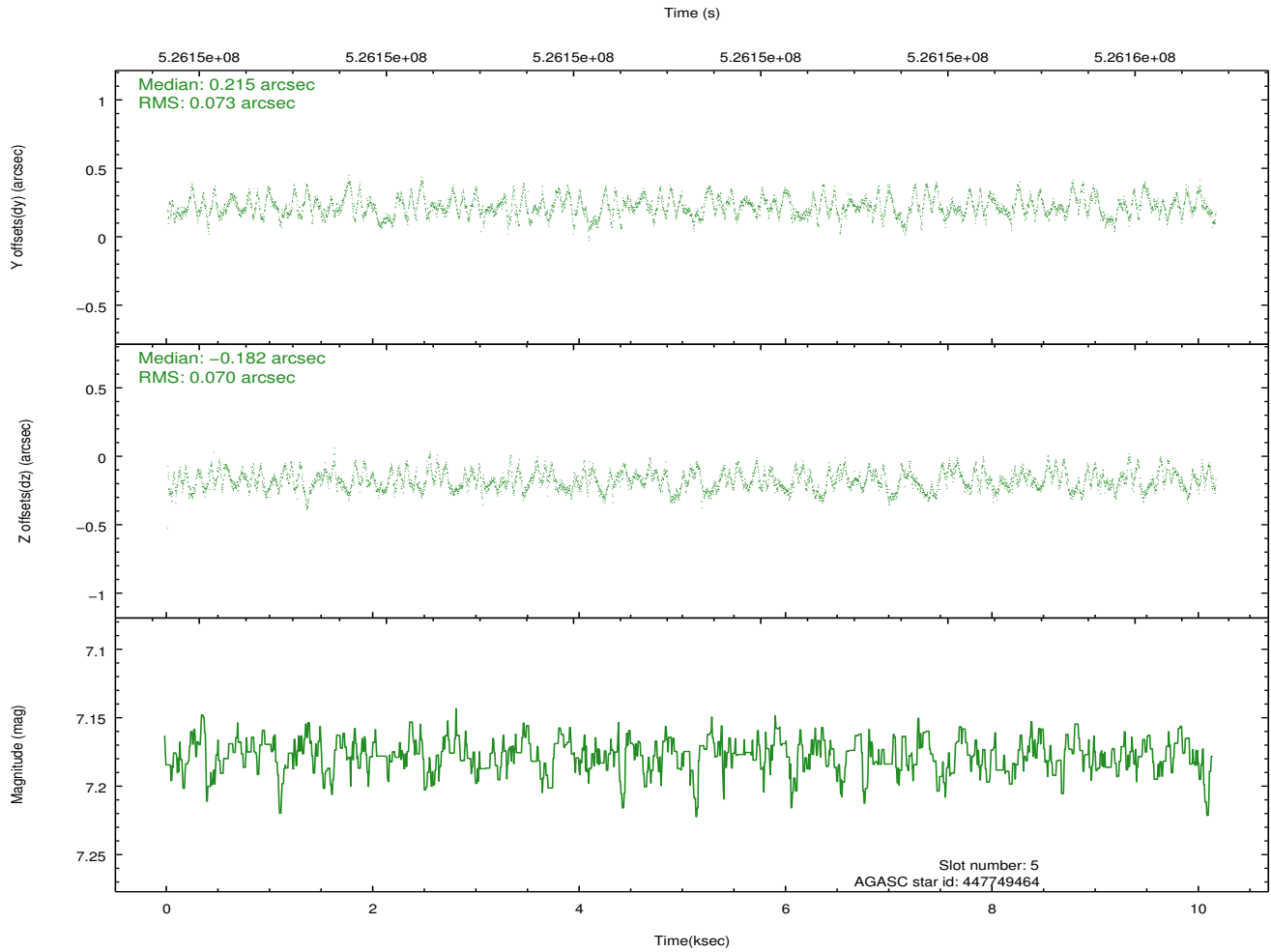
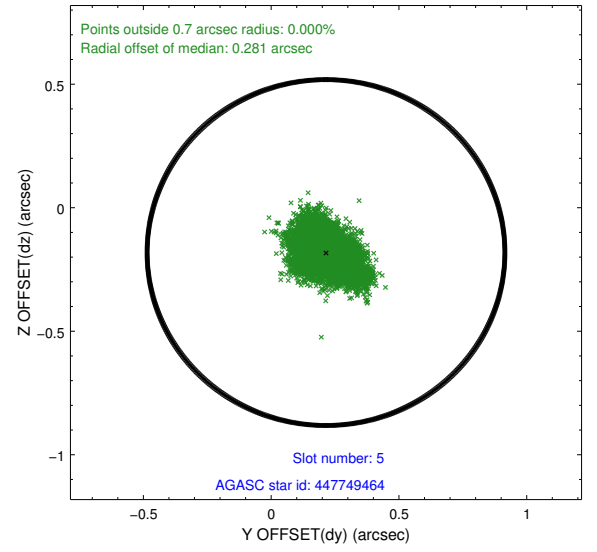
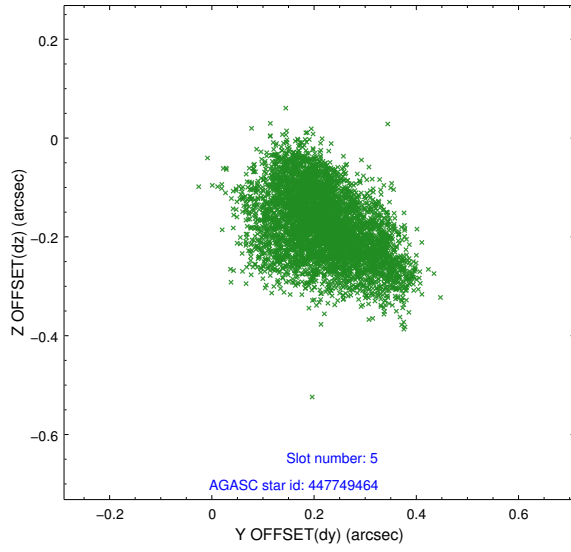
### 2.4.1 Slot 3



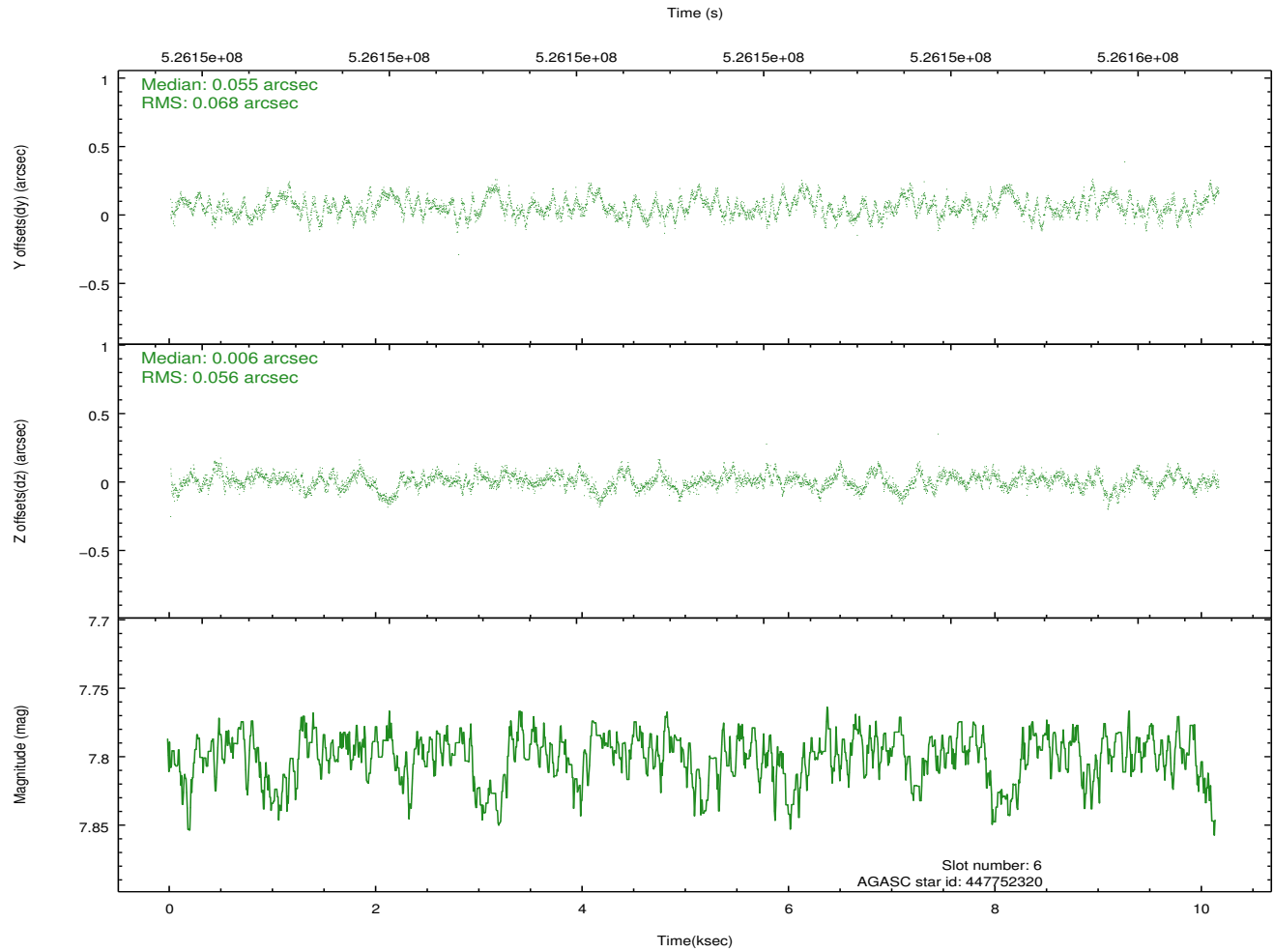
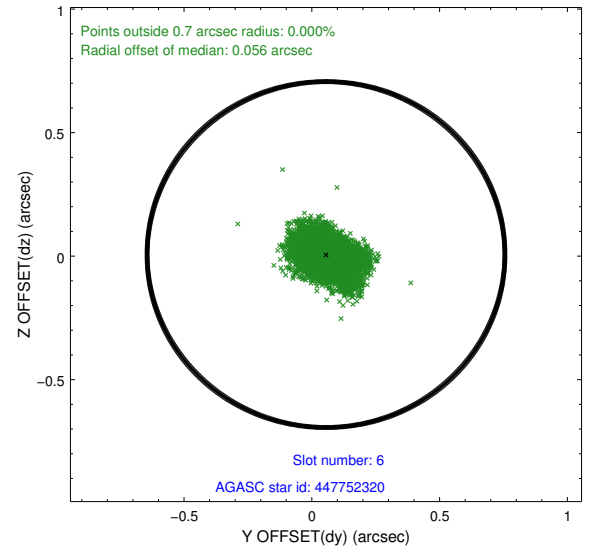
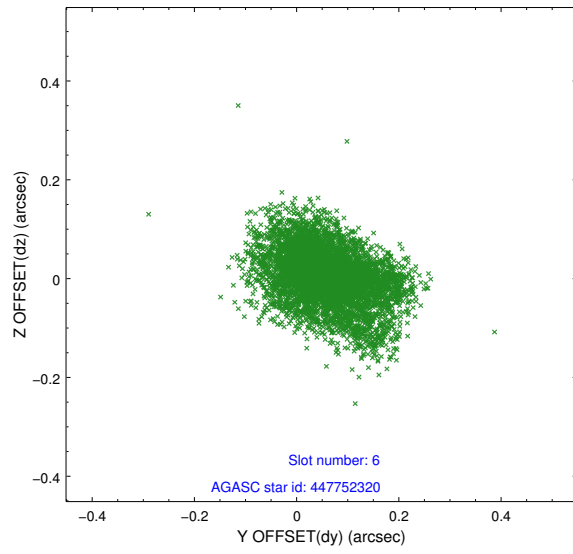
## 2.4.2 Slot 4



### 2.4.3 Slot 5

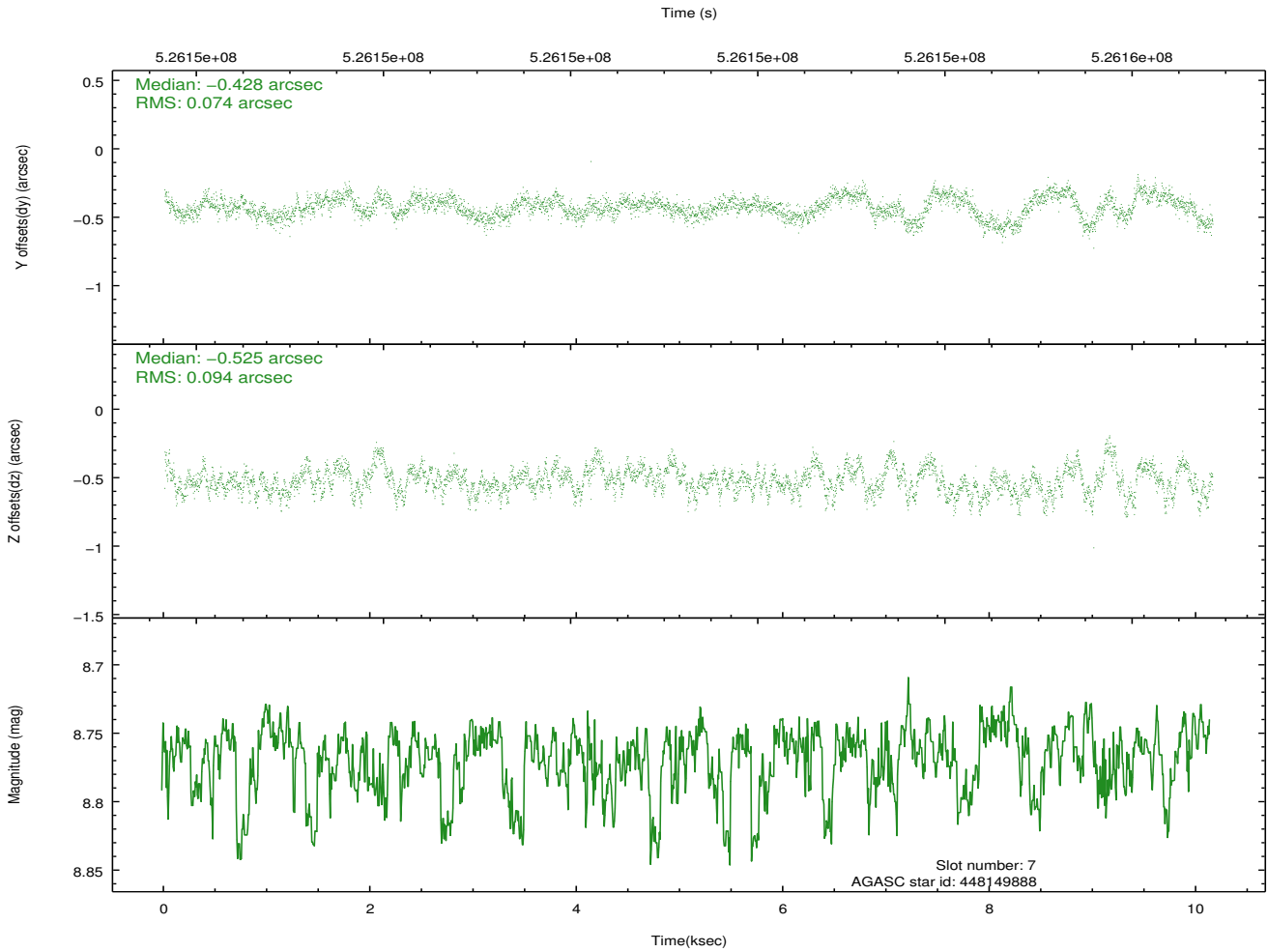
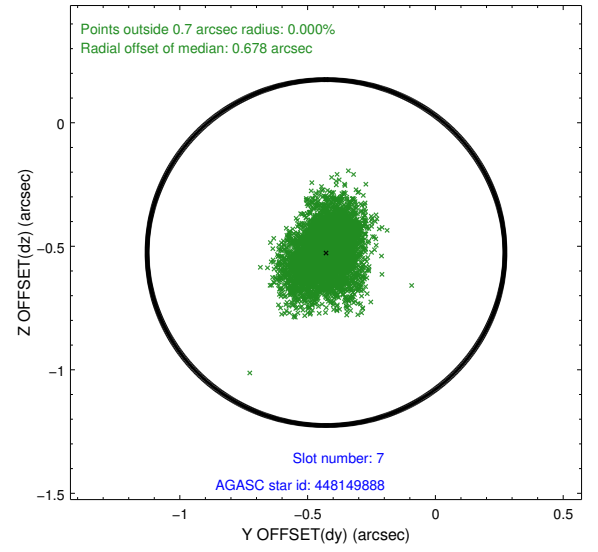
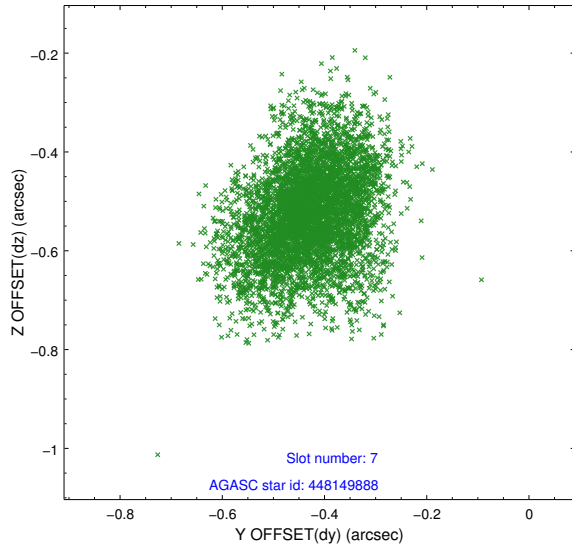


## 2.4.4 Slot 6



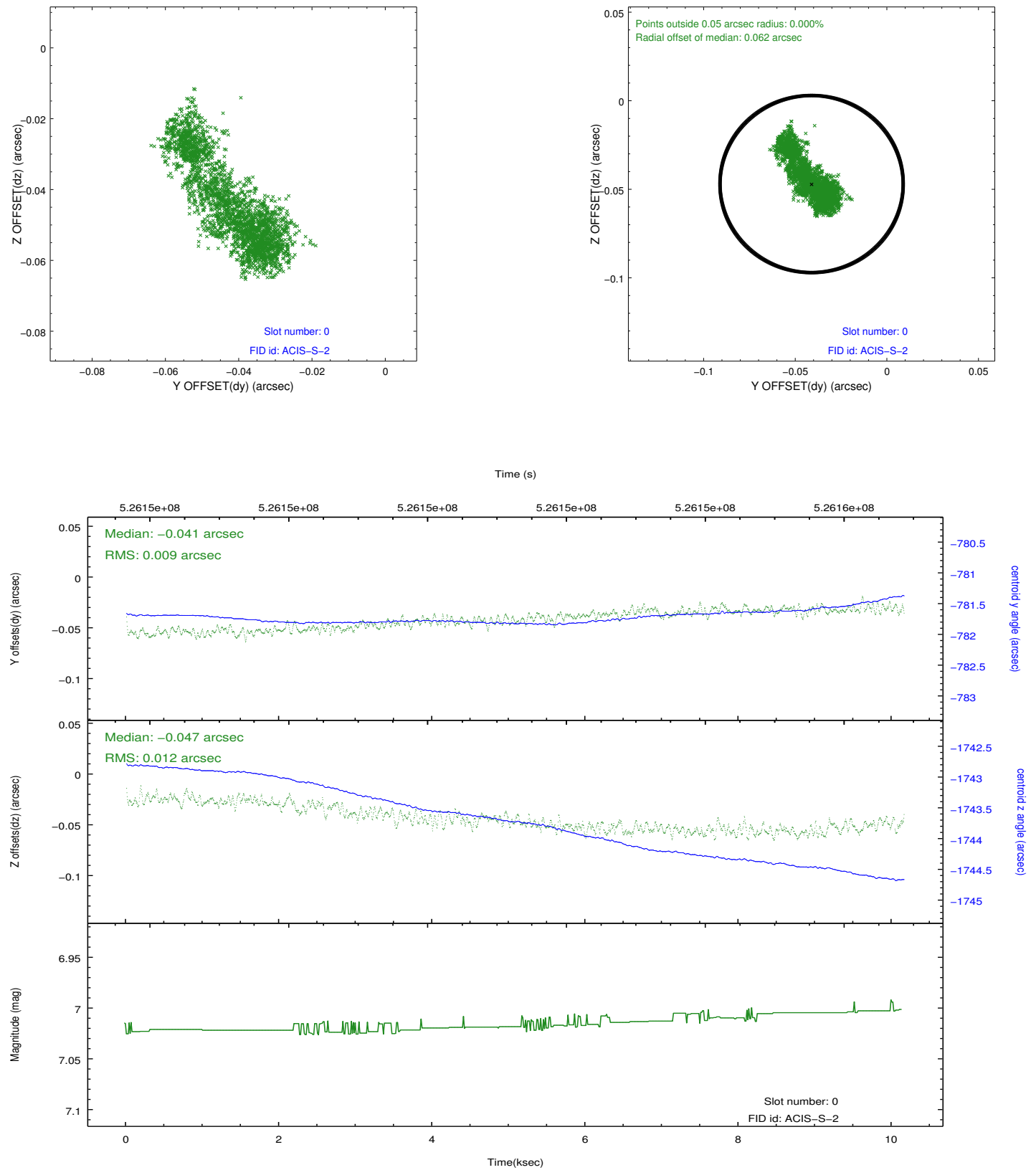


## 2.4.5 Slot 7

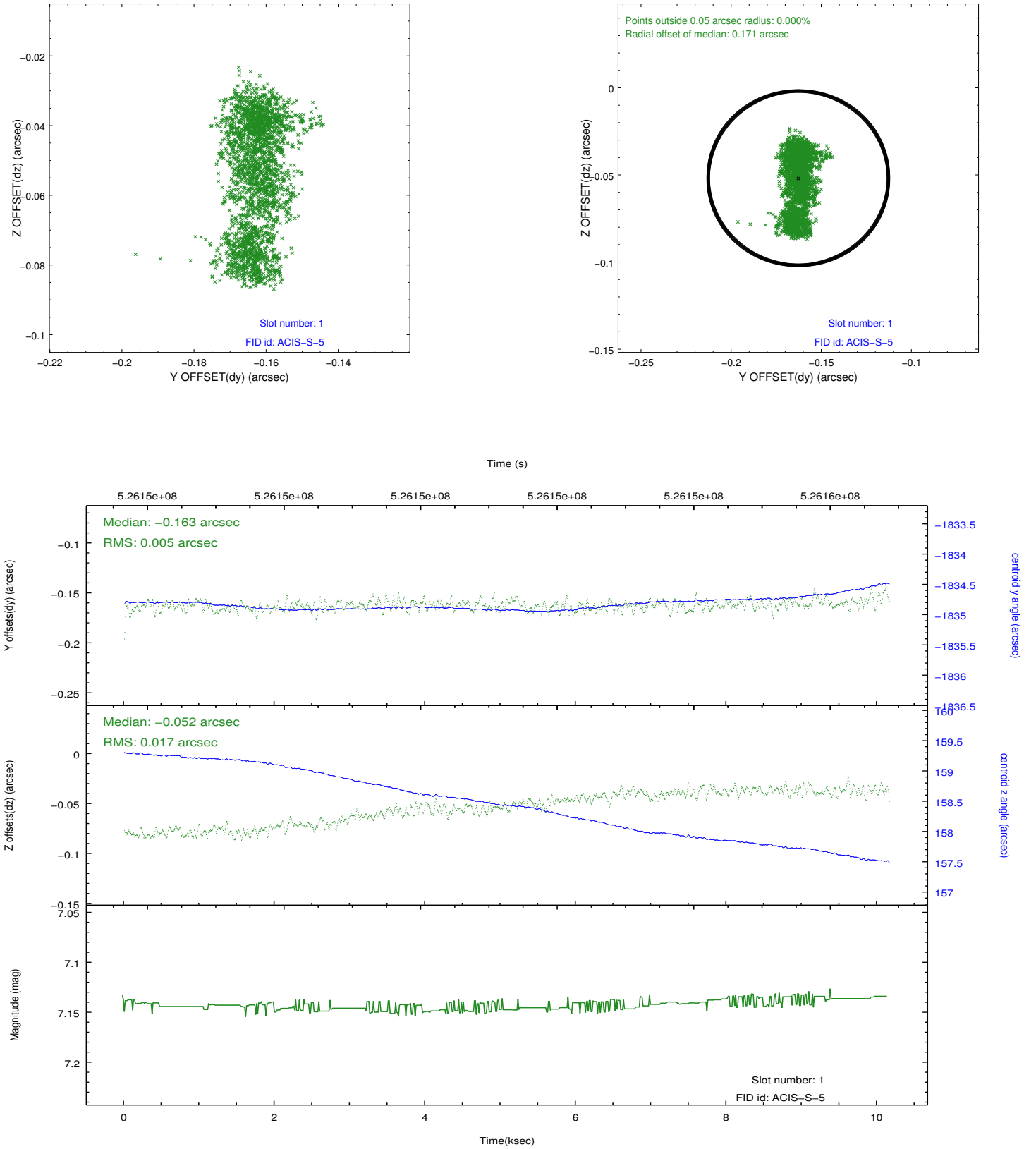


## 2.5 FID Slots

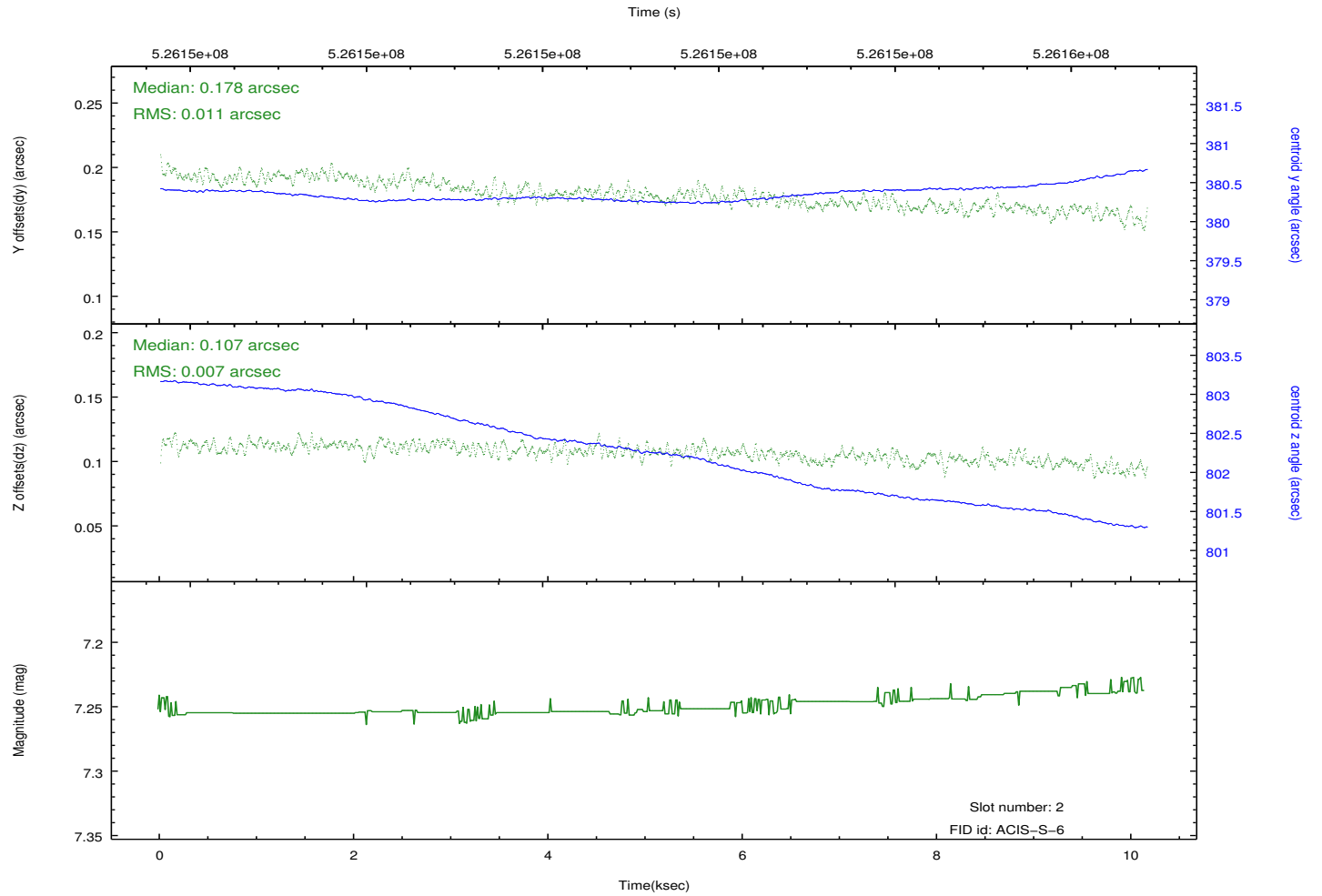
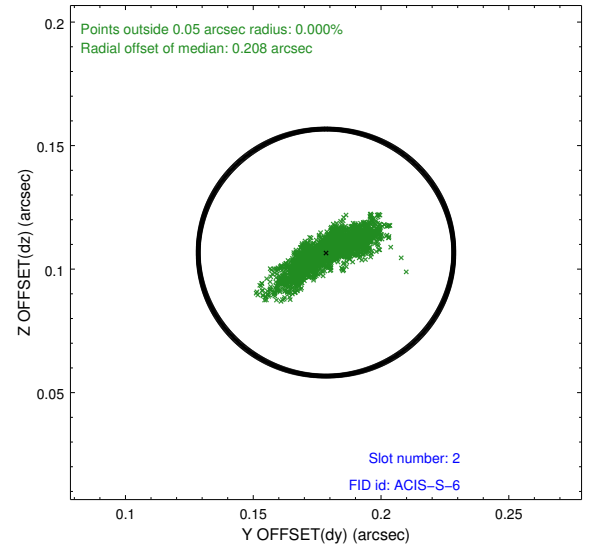
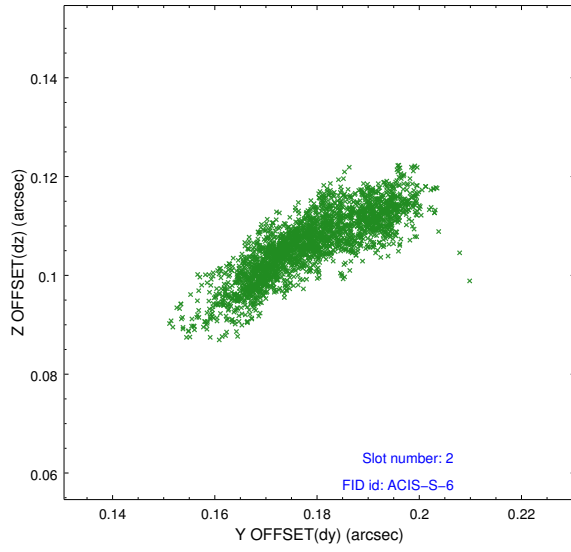
### 2.5.1 Slot 0



## 2.5.2 Slot 1



### 2.5.3 Slot 2



## A Summary

### A.1 Status

V&V Scientist	Joy Nichols
V&V Date (YYYY-MM-DD)	2014.09.04
V&V Edition	1
V&V Disposition and Status	OK
V&V Charge Time	10.058868334055

### A.2 Comments