

V&V Reference Report

L2 ASCDS Version : 10.2.4

Observation 16111 - L2 Version 1
Chandra X-Ray Center

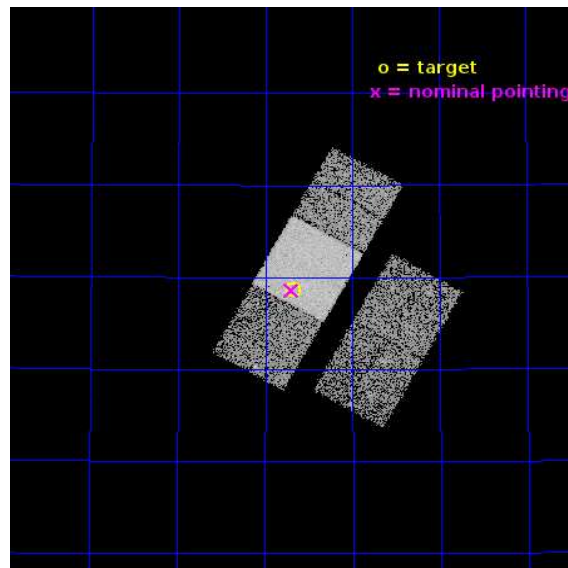
L2 Processing Date : Aug 29 2014

Contents

1	Front	2
2	OBI	3
2.1	OBI	3
2.1.1	Images	3
2.1.2	Bias	3
2.1.3	Parameters	4
2.1.4	Events	4
2.2	Compared Parameters	5
2.3	Aspect	6
2.4	Star Slots	9
2.4.1	Slot 3	9
2.4.2	Slot 4	10
2.4.3	Slot 5	11
2.4.4	Slot 6	12
2.4.5	Slot 7	13
2.5	FID Slots	14
2.5.1	Slot 0	14
2.5.2	Slot 1	15
2.5.3	Slot 2	16
A	Summary	17
A.1	Status	17
A.2	Comments	17

1 Front

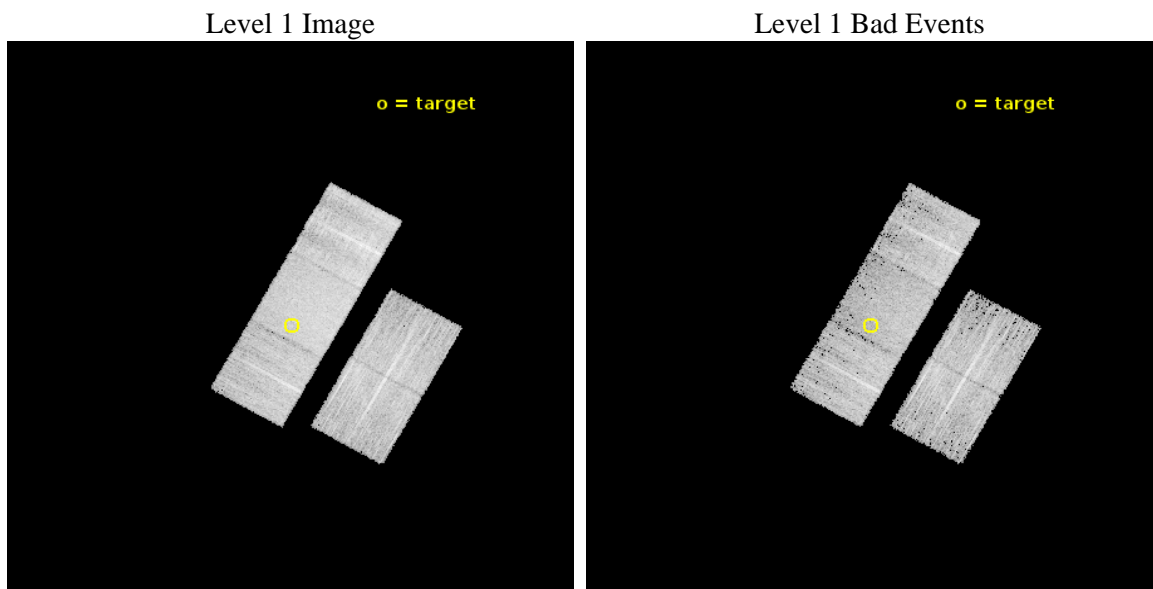
seq_num	702999	Sequence number
obs_id	16111	Observation id
title	A Pilot Search for Spatially Offset AGN in Galaxy Merger Remnants	
observer	Dr. Julia Comerford	Principal investigator
object	SDSS J134640.79+522836.6	Source name
dtcycle	0	
cycle	P	events from which exps? Prim/Second/Both
ra_targ	206.67	Observer's specified target RA [deg]
dec_targ	52.476833	Observer's specified target Dec [deg]
ra_nom	206.67504415311	Nominal RA [deg]
dec_nom	52.4765886771	Nominal Dec [deg]
roll_nom	299.31224788789	Nominal Roll [deg]
revision	1	Processing version of data
ontime	10068.800077438	Sum of GTIs [s]
livetime	9937.2437918838	Livetime [s]
ontime2	10065.659186721	Sum of GTIs [s]
ontime3	10068.800077438	Sum of GTIs [s]
ontime6	10068.800077438	Sum of GTIs [s]
ontime7	10068.800077438	Sum of GTIs [s]
ontime8	10068.800077438	Sum of GTIs [s]
l2events	52821	Number of level 2 events



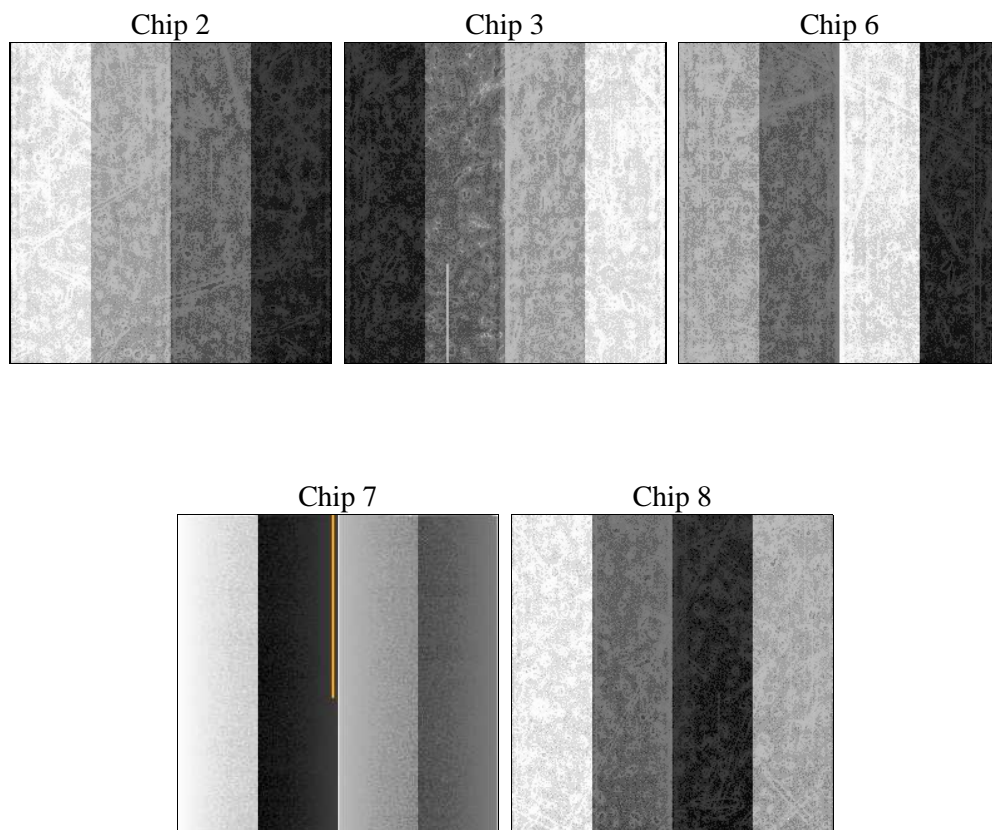
2 OBI

2.1 OBI

2.1.1 Images



2.1.2 Bias



2.1.3 Parameters

obi_num	0	Obi number	sched_exp_time	10000.873000	[s] Scheduled observation exposure time
ascdsver	10.2.4	Processing system revision	ontime	10068.800077438	Sum of GTIs [s]
caldsver	4.6.2	 	ontime2	10065.659186721	Sum of GTIs [s]
date	2014-08-30T02:49:22	Date and time of file creation	ontime3	10068.800077438	Sum of GTIs [s]
revision	1	Processing version of data	ontime6	10068.800077438	Sum of GTIs [s]
			ontime7	10068.800077438	Sum of GTIs [s]
			ontime8	10068.800077438	Sum of GTIs [s]
			l1events	298526	Number of level 1 events

2.1.4 Events

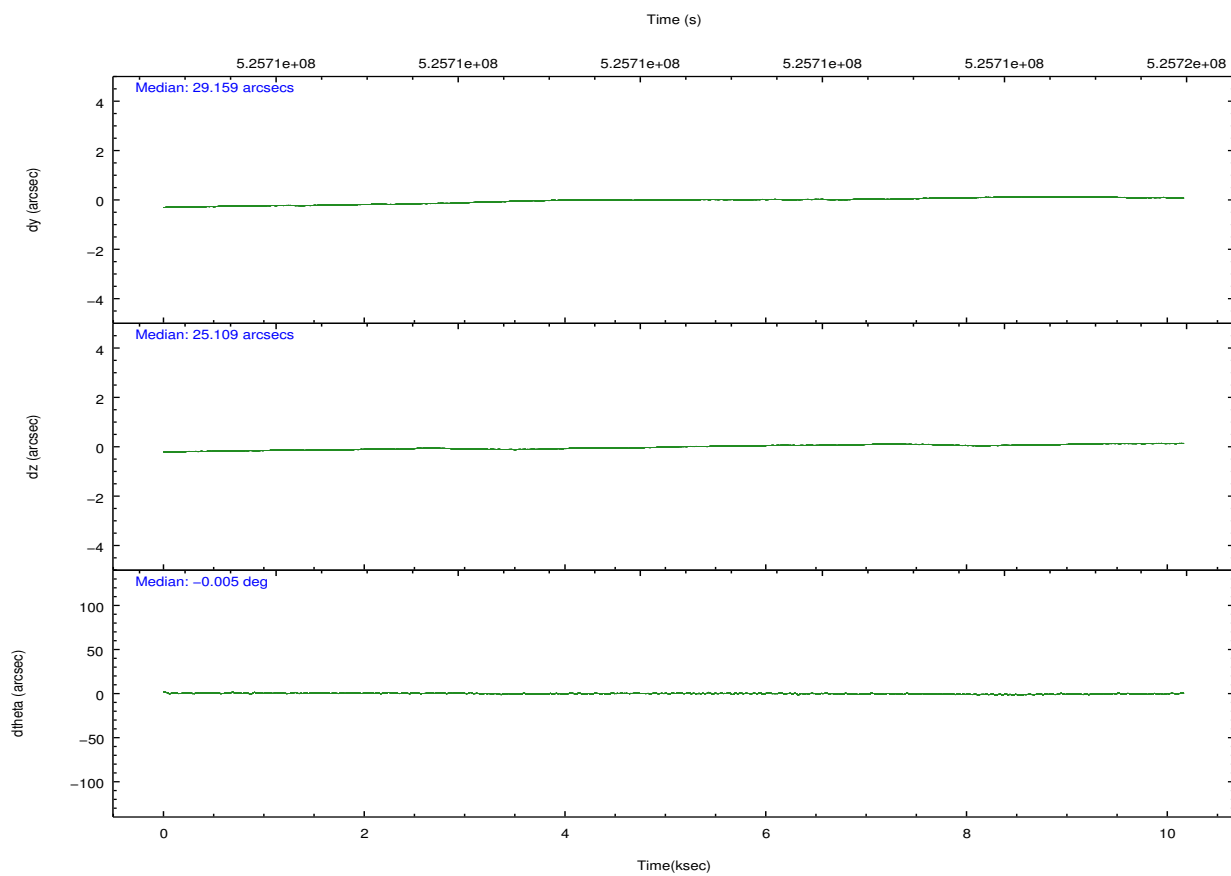
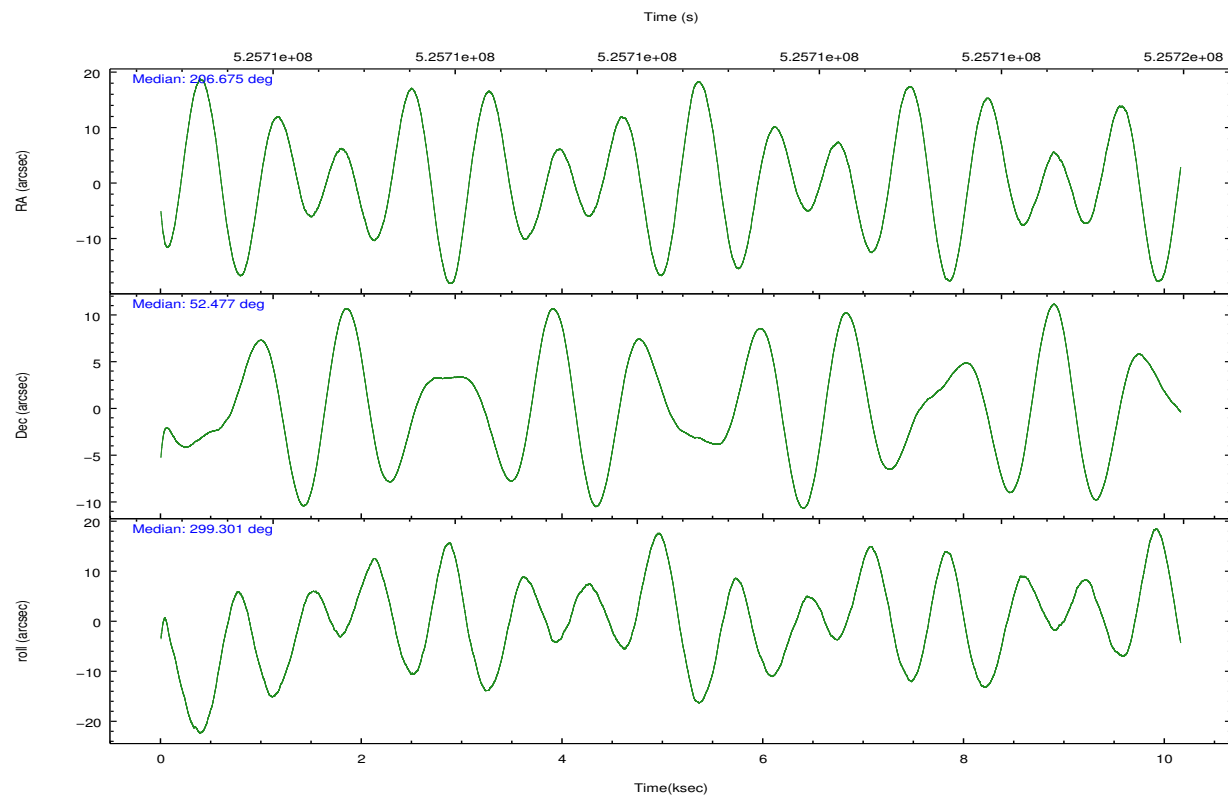
	ccd 2	ccd 3	ccd 6	ccd 7	ccd 8
level 1 events	52711	51290	54107	70543	69875
rejected events	46799	45466	47594	39635	50137
rejected %	88%	88%	87%	56%	71%

	ccd 2	ccd 3	ccd 6	ccd 7	ccd 8
grade 0 events	2140	2087	2175	2693	5782
	4%	4%	4%	3%	8%
grade 1 events	24	25	26	93	47
	0%	0%	0%	0%	0%
grade 2 events	1464	1302	1484	6438	4715
	2%	2%	2%	9%	6%
grade 3 events	624	640	677	2624	1964
	1%	1%	1%	3%	2%
grade 4 events	560	577	663	2591	1928
	1%	1%	1%	3%	2%
grade 5 events	2283	2714	2848	7091	4089
	4%	5%	5%	10%	5%
grade 6 events	1128	1220	1515	16567	5351
	2%	2%	2%	23%	7%
grade 7 events	44488	42725	44719	32446	45999
	84%	83%	82%	45%	65%

2.2 Compared Parameters

Parameter	Planned	Actual	Parameter	Planned	Actual
Instrument	ACIS	ACIS	Obspar format version number	7	7
Detector	ACIS-23678	ACIS-23678	Obspar file type	PREDICTED	ACTUAL
Grating	NONE	NONE	Obspar update status	NONE	UPDATED
Data mode	FAINT	FAINT	CCD I0 on	N	N
Observation mode	POINTING	POINTING	CCD I1 on	N	N
[deg] Pointing RA	206.636031	206.6750441531116	CCD I2 on	O1	Y
[deg] Pointing Dec	52.490288	52.47658867710009	CCD I3 on	O4	Y
[deg] Pointing Roll	299.186559	299.3122478878934	CCD S0 on	N	N
[mm] SIM focus pos	-0.684267	-0.6828225247311905	CCD S1 on	N	N
[mm] SIM defocus	0	0.001444936568705701	CCD S2 on	O2	Y
[mm] SIM translation stage pos	-190.132523	-190.1425803651734	CCD S3 on	Y	Y
[mm] SIM translation stage offset	0	0.01005778216563158	CCD S4 on	O3	Y
[s] Observation start time (MET)	525705443.184000	525703902.42878	CCD S5 on	N	N
Observation start date	2014-08-29T13:16:16	2014-08-29T12:51:42	Number of optional ACIS chips dropped	0	0
[s] Observation end time (MET)	525715444.184000	525715669.94194	On-chip summing requested	N	N
Observation end date	2014-08-29T16:02:57	2014-08-29T16:07:49	Subarray requested	NONE	NONE
Read mode	TIMED	TIMED	Alternating exposures requested	N	N
			[s] Primary exposure time	0.000000	3.1

2.3 Aspect

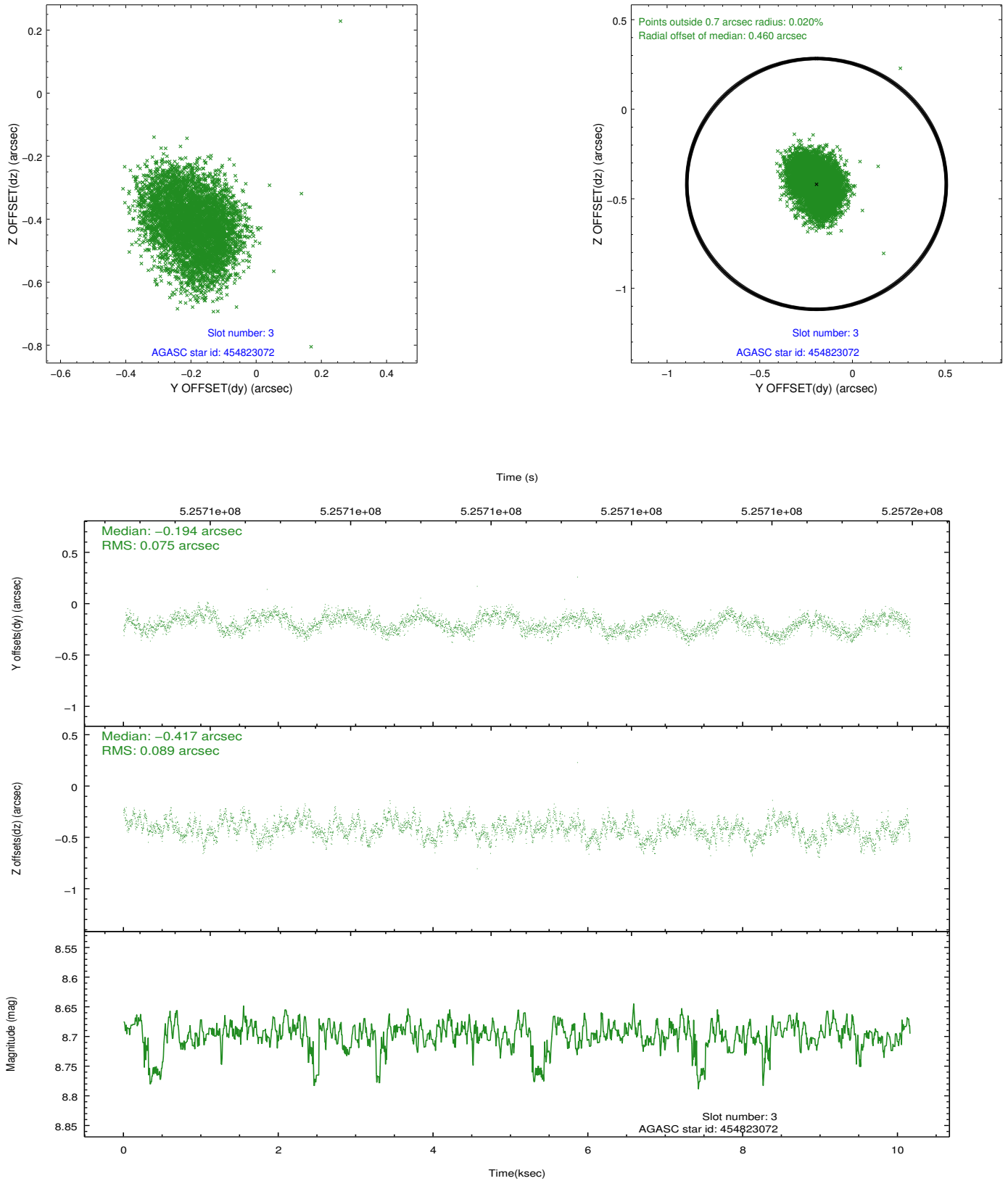


Slot Statistics

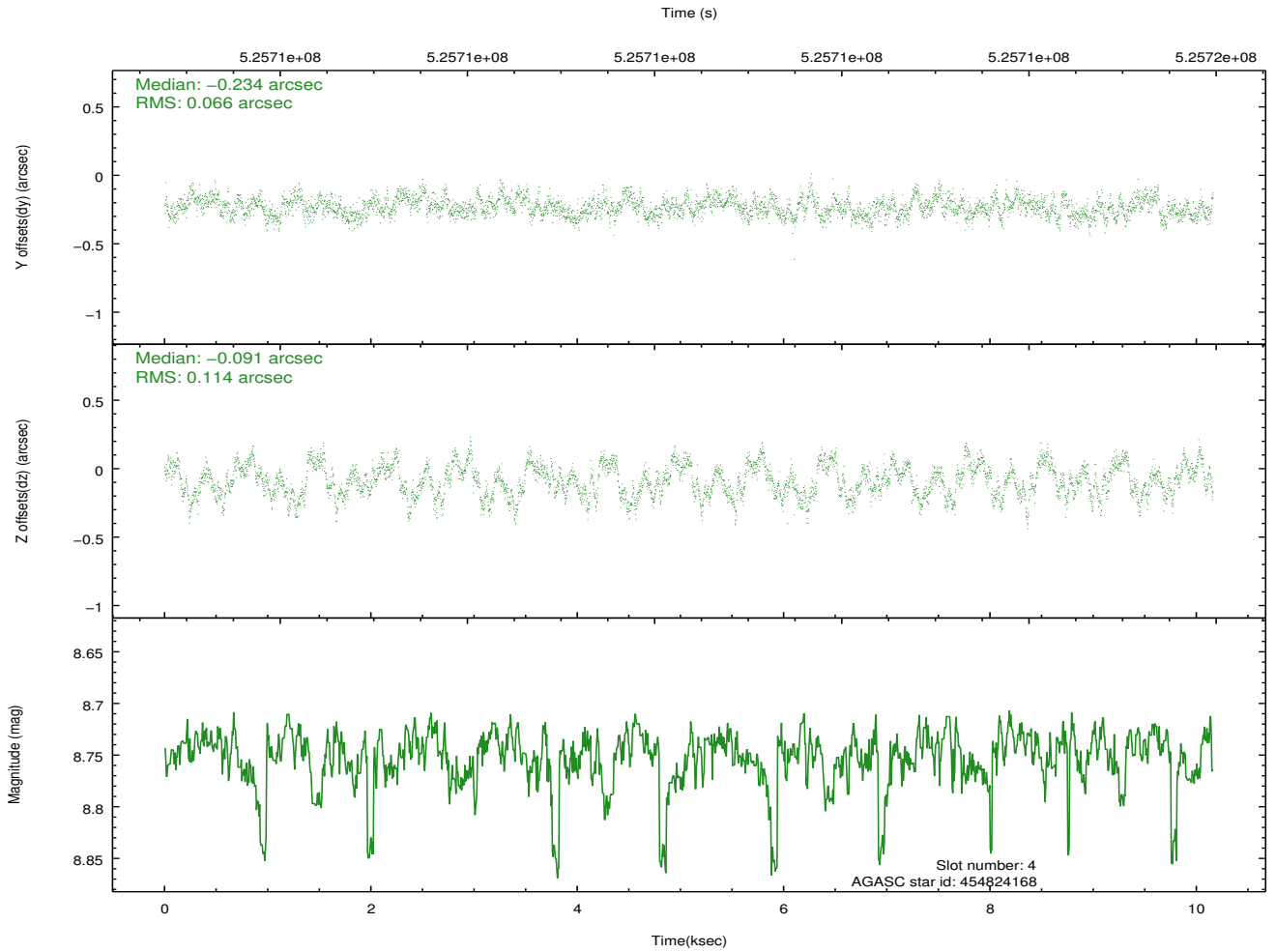
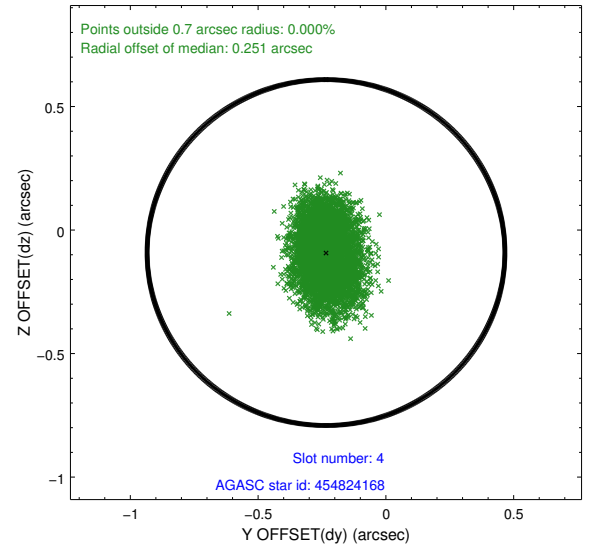
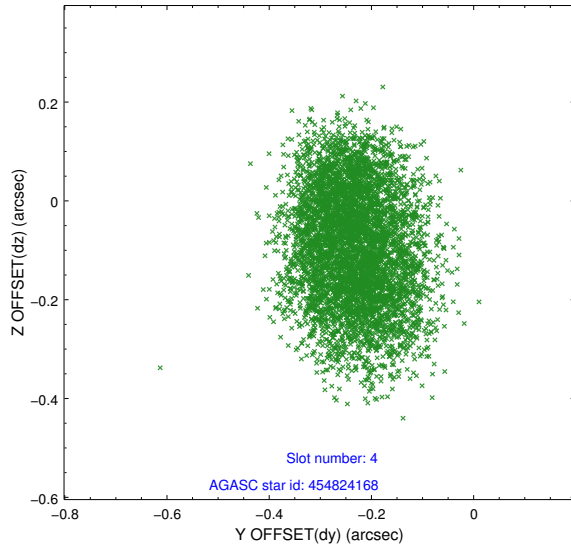
slot	status	id	mag	n_pts	med_dy	med_dz	dr1	dr2	ra	dec	mean_y	mean_z
0	FID	ACIS-S-2	6.95	2478	-0.236	0.001	0.012	0.017	0.000000	0.000000	-782.68	-1746.70
1	FID	ACIS-S-4	7.04	2478	0.425	0.114	0.006	0.011	0.000000	0.000000	2130.98	161.40
2	FID	ACIS-S-5	7.07	2479	-0.220	-0.105	0.014	0.020	0.000000	0.000000	-1834.88	155.37
3	GUIDE	454823072	8.70	4952	-0.194	-0.417	0.127	0.192	207.453559	52.320000	1403.14	1275.65
4	GUIDE	454824168	8.75	4955	-0.234	-0.091	0.141	0.224	206.610870	51.995353	1529.24	-916.91
5	GUIDE	454694656	9.31	4951	0.514	0.211	0.135	0.227	205.491954	52.425166	-1035.80	-2297.11
6	GUIDE	504767904	9.39	4954	-0.035	0.278	0.182	0.285	206.472243	52.852176	-1311.59	324.17
7	GUIDE	504764304	8.62	4956	-0.049	0.018	0.112	0.179	207.168090	53.261319	-1867.45	2356.99

2.4 Star Slots

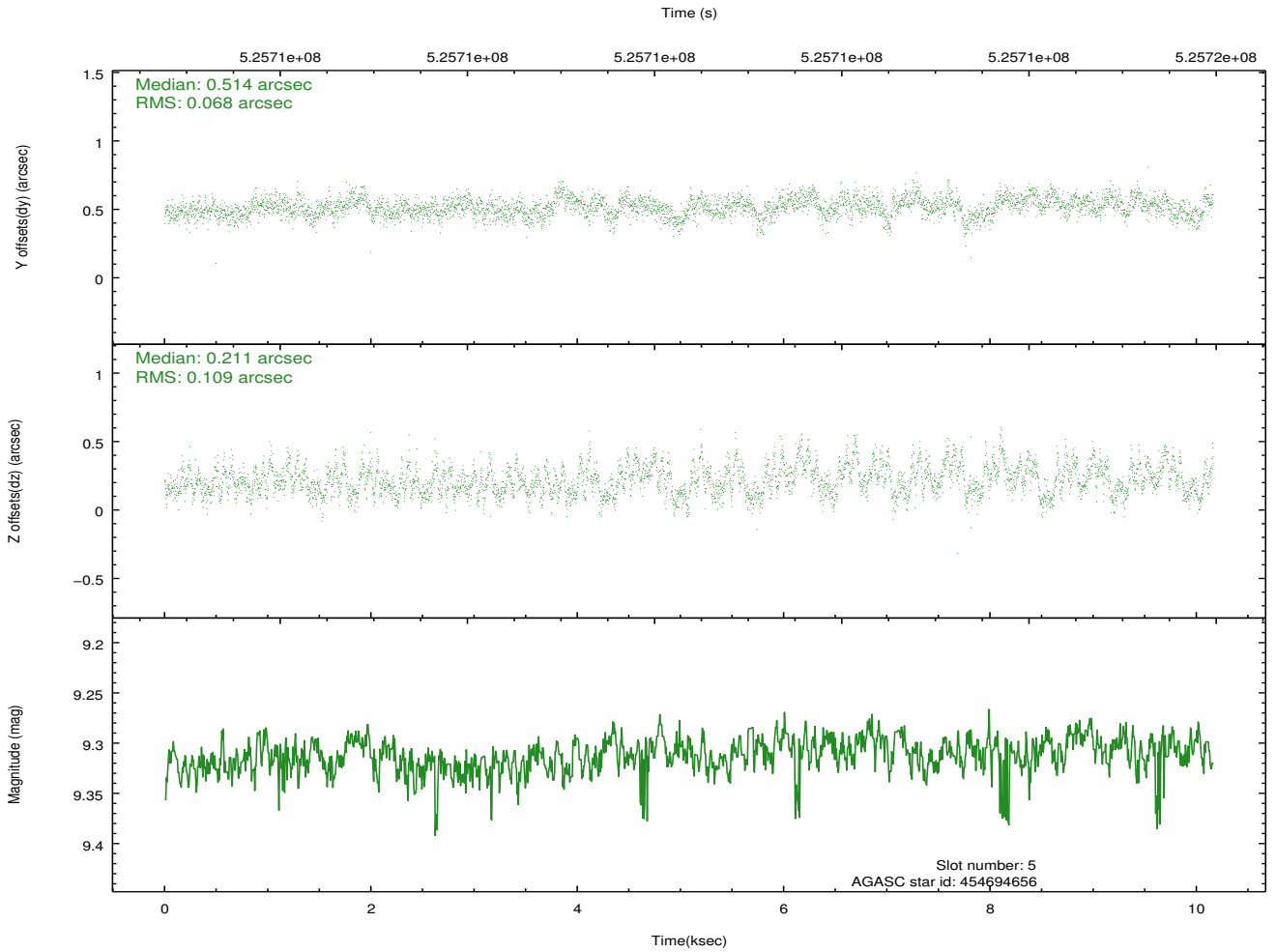
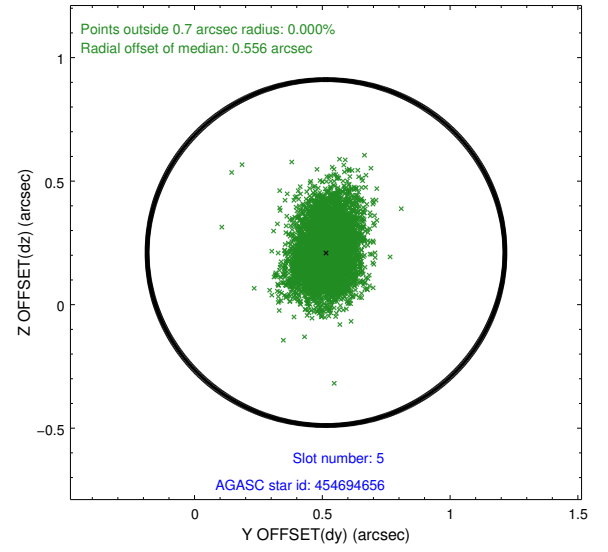
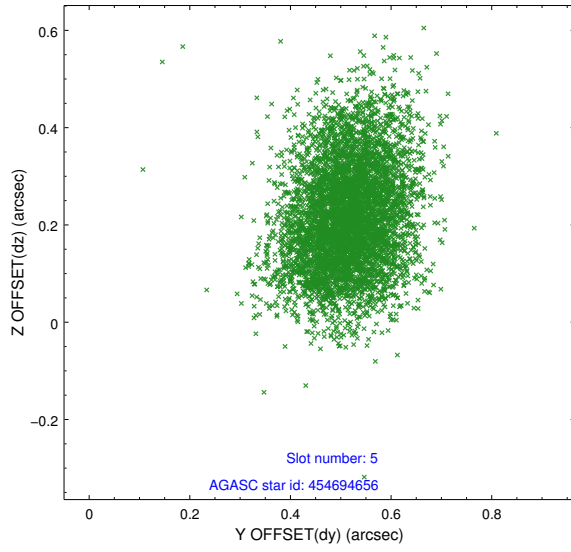
2.4.1 Slot 3



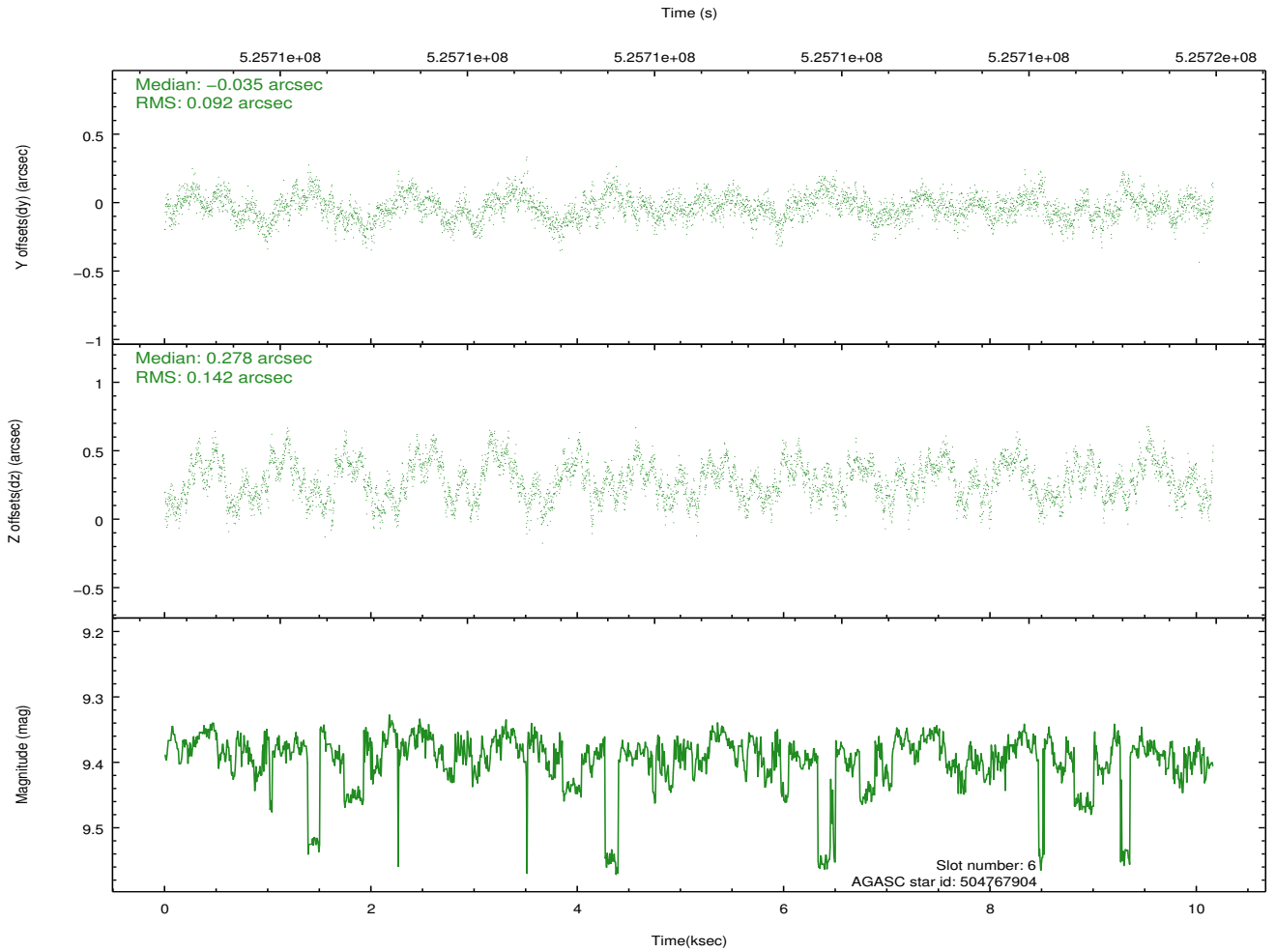
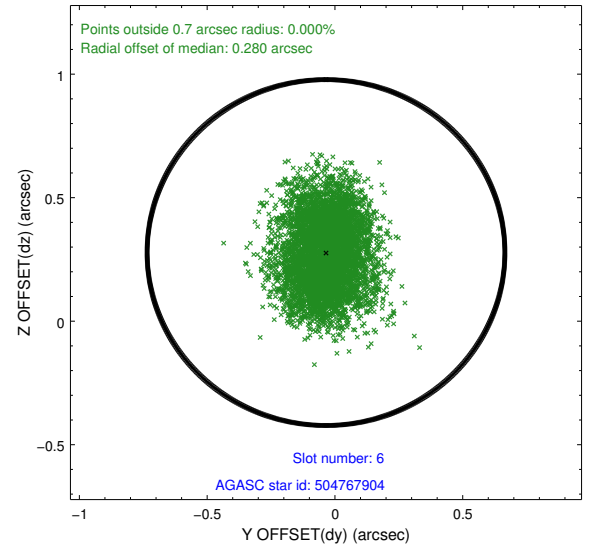
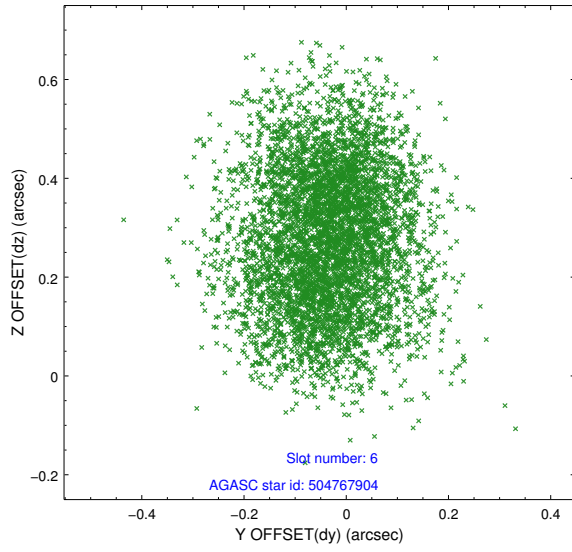
2.4.2 Slot 4



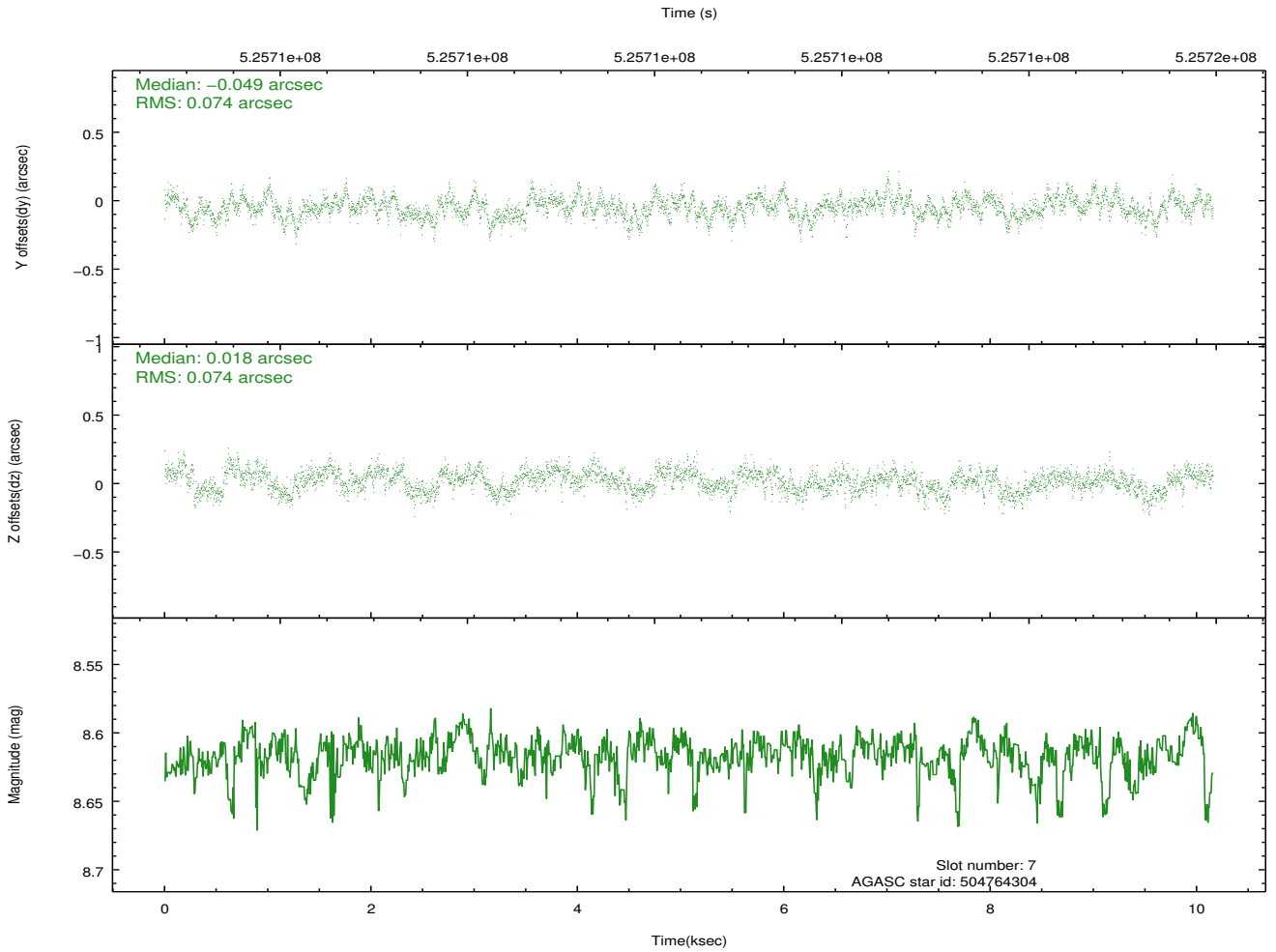
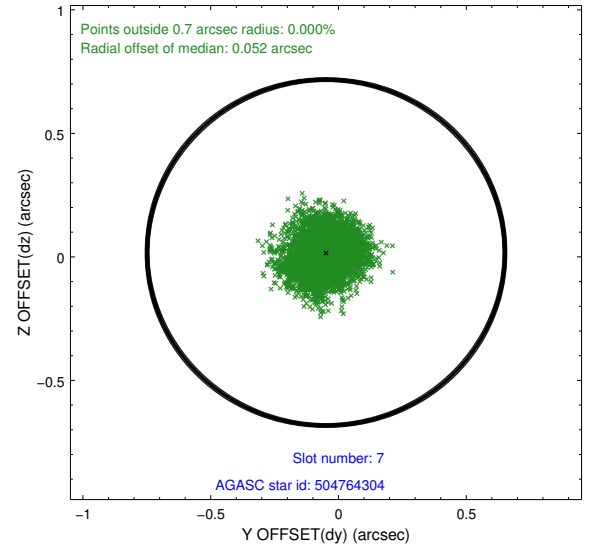
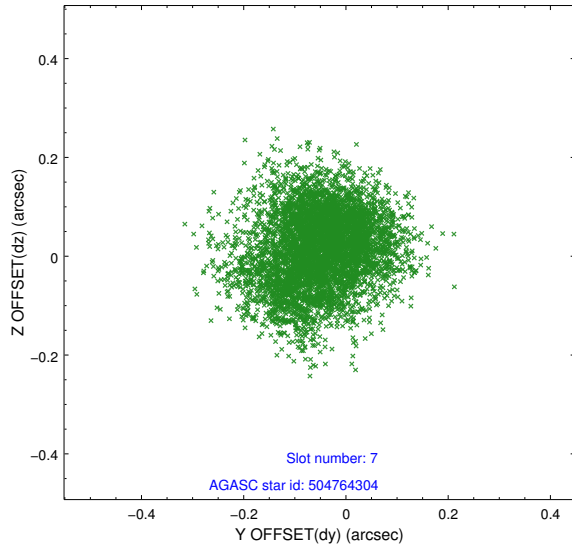
2.4.3 Slot 5



2.4.4 Slot 6

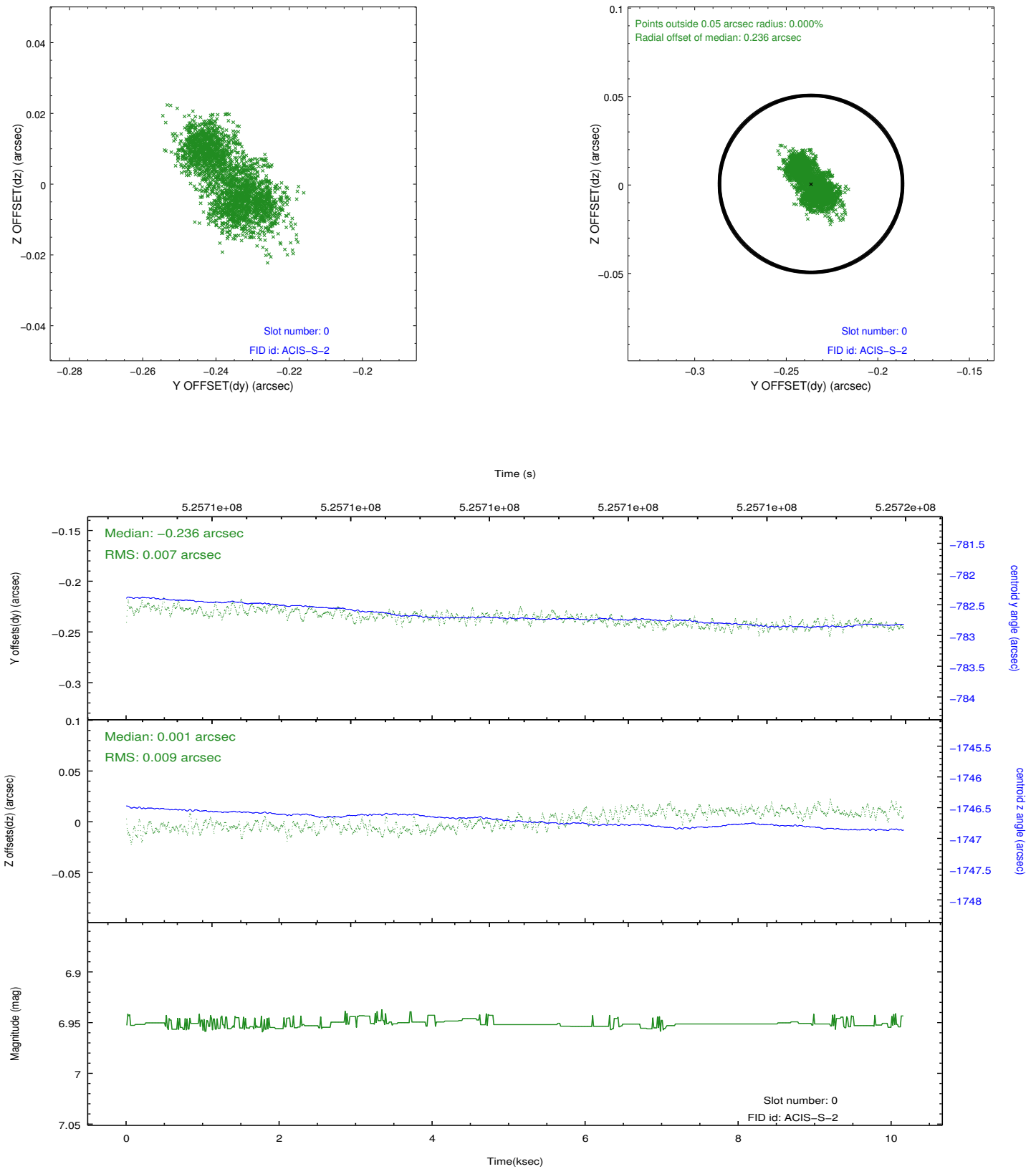


2.4.5 Slot 7

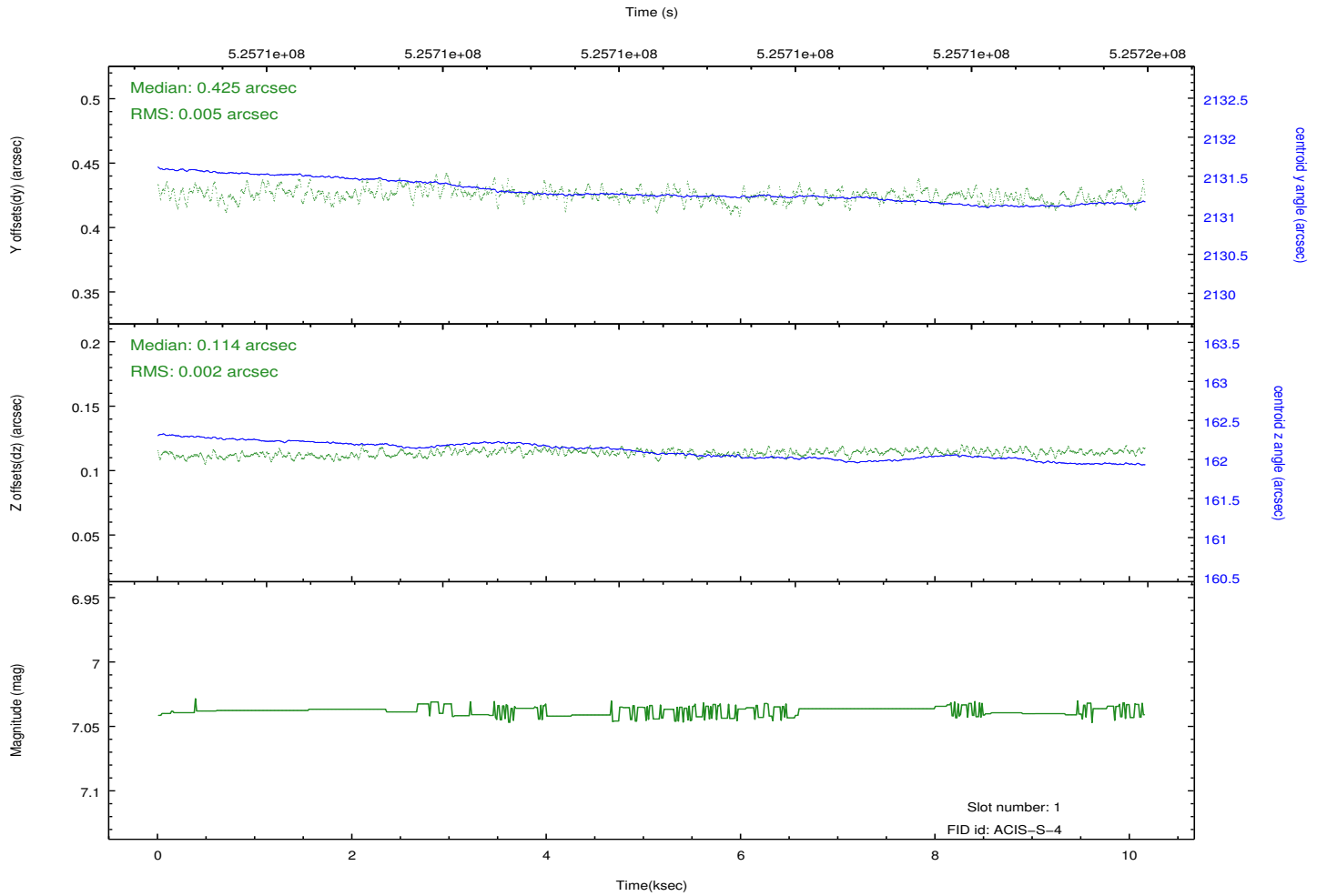
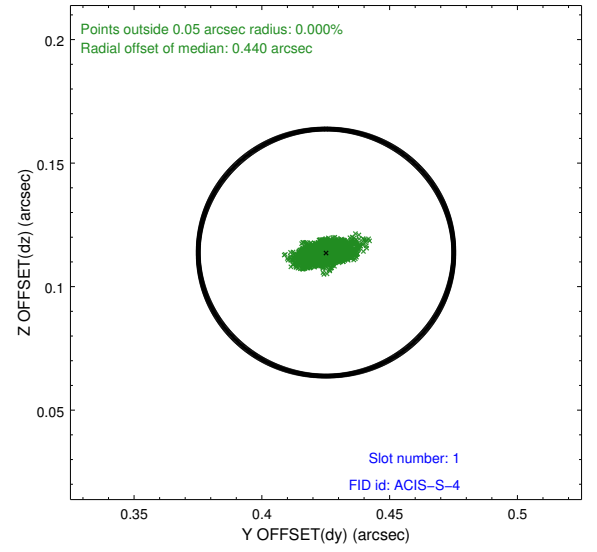
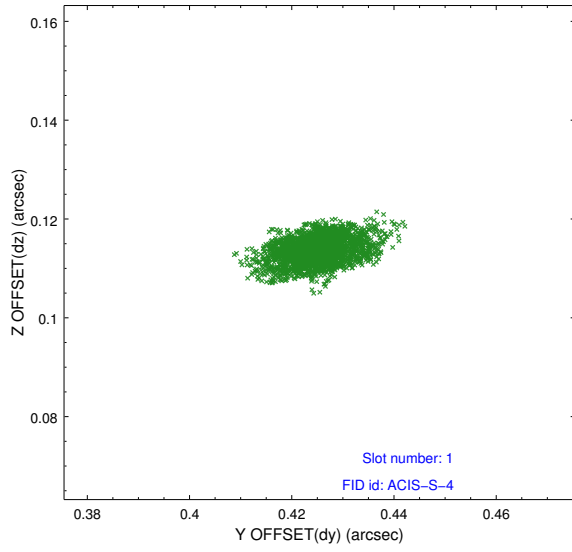


2.5 FID Slots

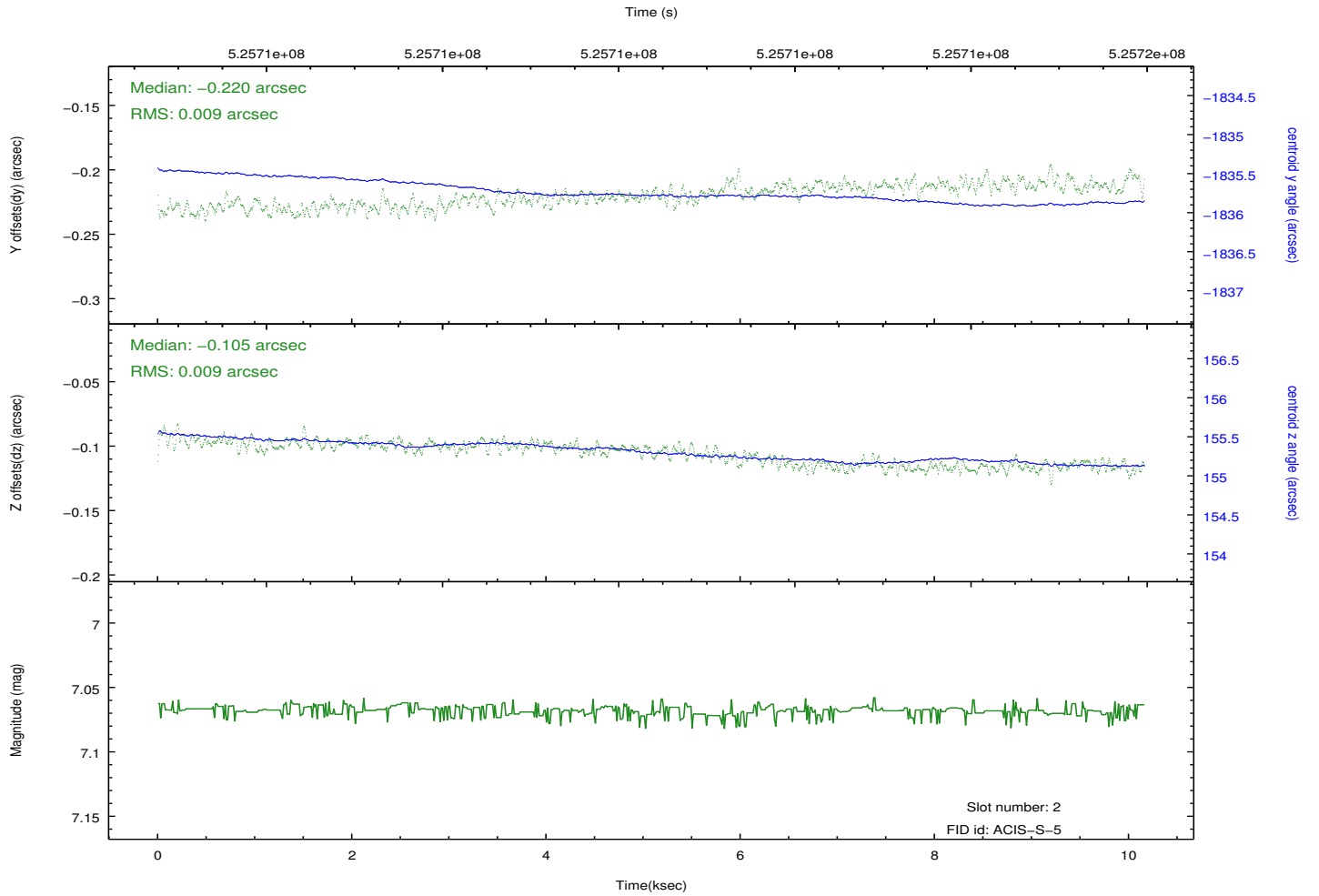
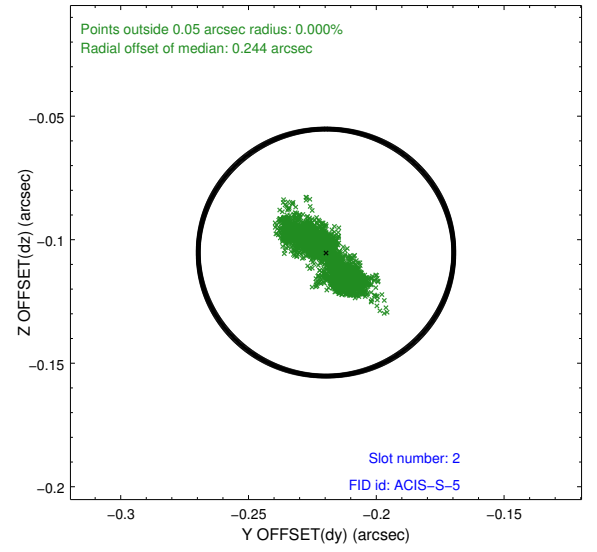
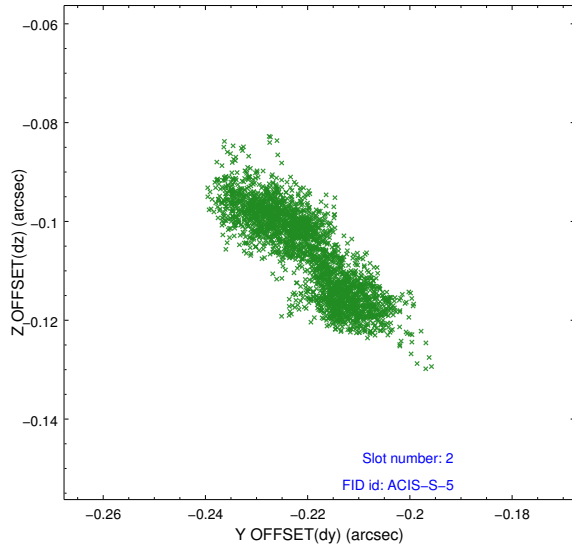
2.5.1 Slot 0



2.5.2 Slot 1



2.5.3 Slot 2



A Summary

A.1 Status

V&V Scientist	Joy Nichols
V&V Date (YYYY-MM-DD)	2014.09.02
V&V Edition	1
V&V Disposition and Status	OK
V&V Charge Time	10.068800077438

A.2 Comments