

V&V Reference Report

L2 ASCDS Version : 10.2.4

Observation 16105 - L2 Version 1
Chandra X-Ray Center

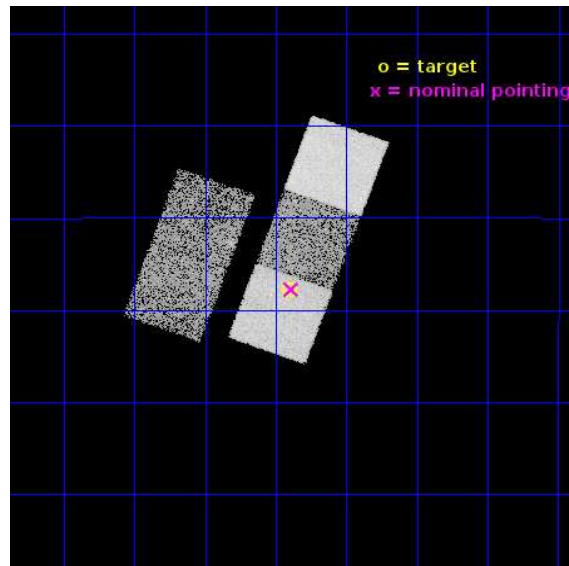
L2 Processing Date : Aug 6 2014

Contents

1	Front	2
2	OBI	3
2.1	OBI	3
2.1.1	Images	3
2.1.2	Bias	3
2.1.3	Parameters	4
2.1.4	Events	4
2.2	Compared Parameters	5
2.3	Aspect	6
2.4	Star Slots	9
2.4.1	Slot 3	9
2.4.2	Slot 4	10
2.4.3	Slot 5	11
2.4.4	Slot 6	12
2.4.5	Slot 7	13
2.5	FID Slots	14
2.5.1	Slot 0	14
2.5.2	Slot 1	15
2.5.3	Slot 2	16
A	Summary	17
A.1	Status	17
A.2	Comments	17

1 Front

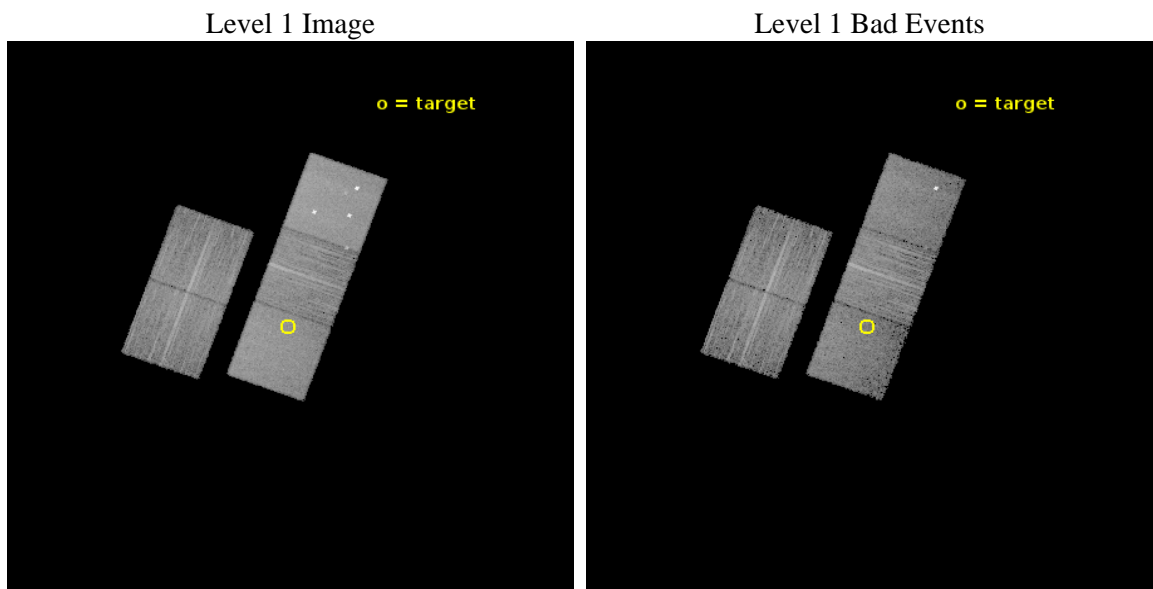
seq_num	702993	Sequence number
obs_id	16105	Observation id
title	Studying AGN evolution with ionization echoes	Proposal title
observer	Dr. Mischa Schirmer	Principal investigator
object	J224024.1-092748	Source name
dtcycle	0	
cycle	P	events from which exps? Prim/Second/Both
ra_targ	340.100417	Observer's specified target RA [deg]
dec_targ	-9.463333	Observer's specified target Dec [deg]
ra_nom	340.09731227895	Nominal RA [deg]
dec_nom	-9.462586373254	Nominal Dec [deg]
roll_nom	109.9062121718	Nominal Roll [deg]
revision	1	Processing version of data
ontime	15349.990473926	Sum of GTIs [s]
livetime	15149.431547886	Livetime [s]
ontime2	15349.826313913	Sum of GTIs [s]
ontime3	15331.021282256	Sum of GTIs [s]
ontime5	15349.949433923	Sum of GTIs [s]
ontime6	15346.767423451	Sum of GTIs [s]
ontime7	15349.990473926	Sum of GTIs [s]
l2events	109657	Number of level 2 events



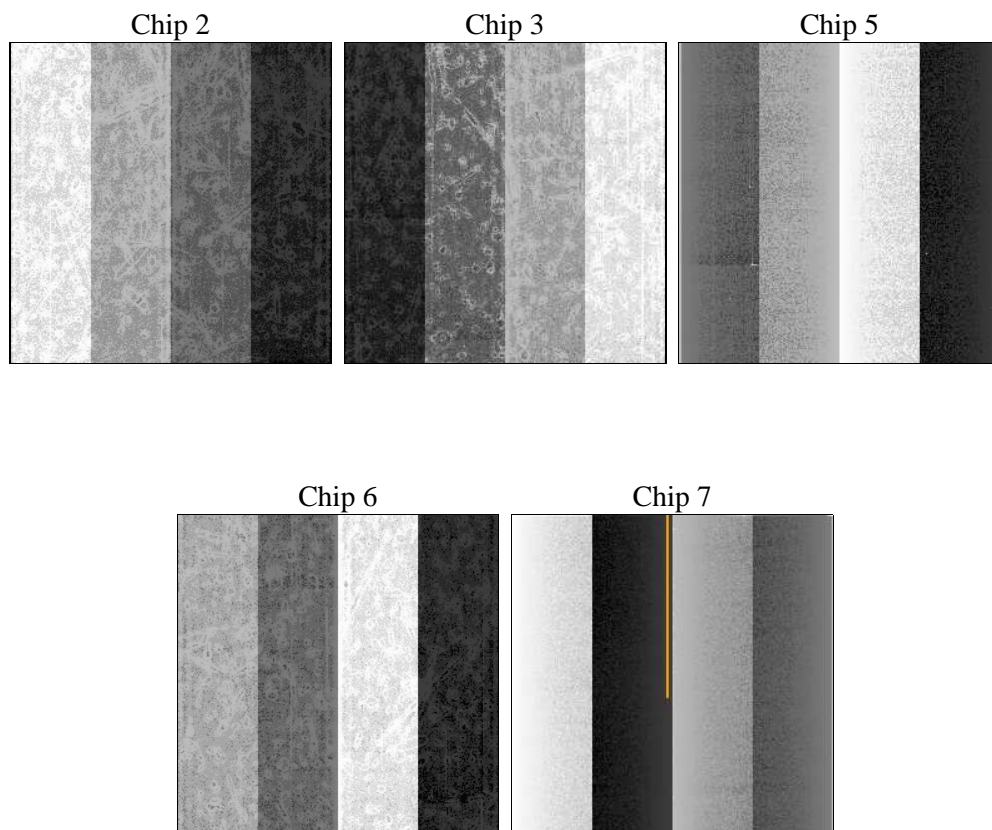
2 OBI

2.1 OBI

2.1.1 Images



2.1.2 Bias



2.1.3 Parameters

obi_num	0	Obi number	sched_exp_time	15277.836000	[s] Scheduled observation exposure time
ascdsver	10.2.4	Processing system revision	ontime	15349.990473926	Sum of GTIs [s]
caldbver	4.6.2	 	ontime2	15349.826313913	Sum of GTIs [s]
date	2014-08-06T14:53:02	Date and time of file creation	ontime3	15331.021282256	Sum of GTIs [s]
revision	1	Processing version of data	ontime5	15349.949433923	Sum of GTIs [s]
			ontime6	15346.767423451	Sum of GTIs [s]
			ontime7	15349.990473926	Sum of GTIs [s]
			l1events	404162	Number of level 1 events

2.1.4 Events

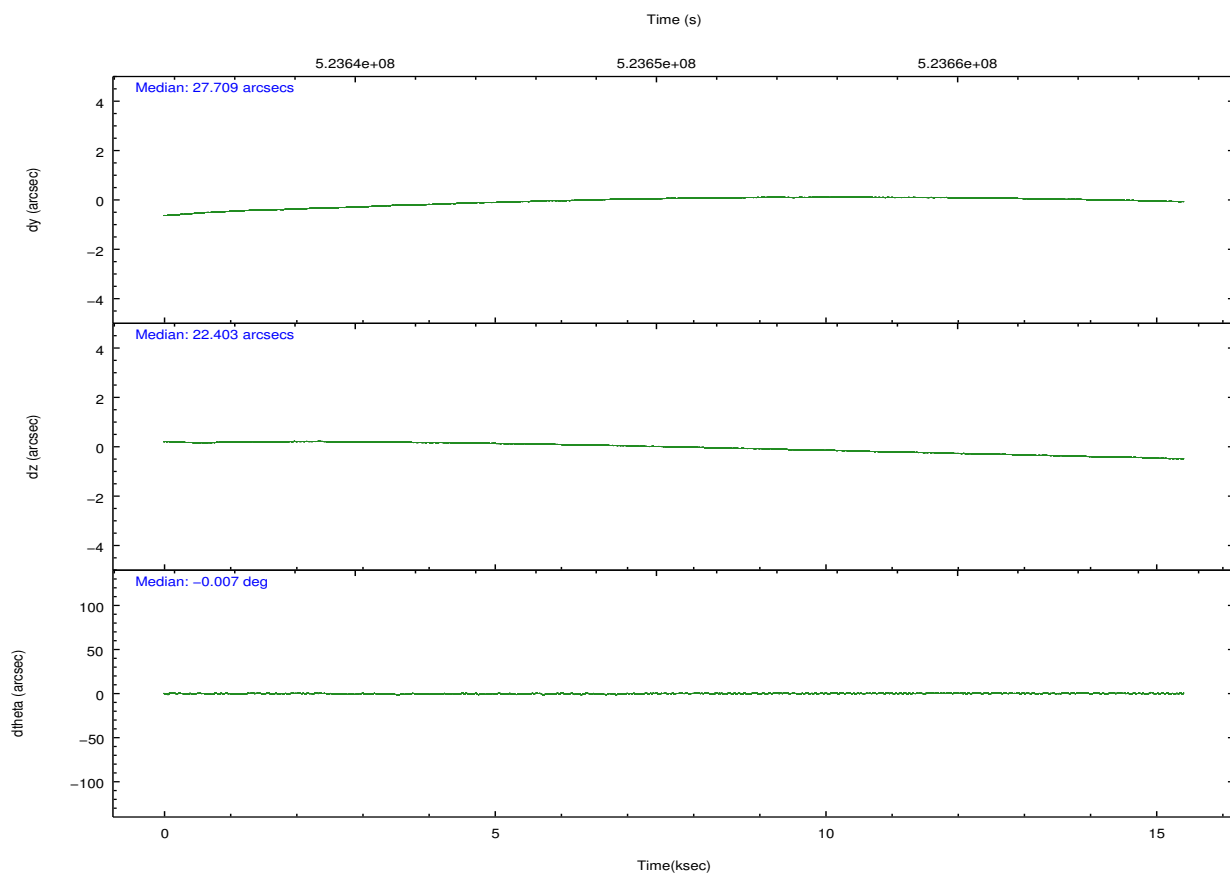
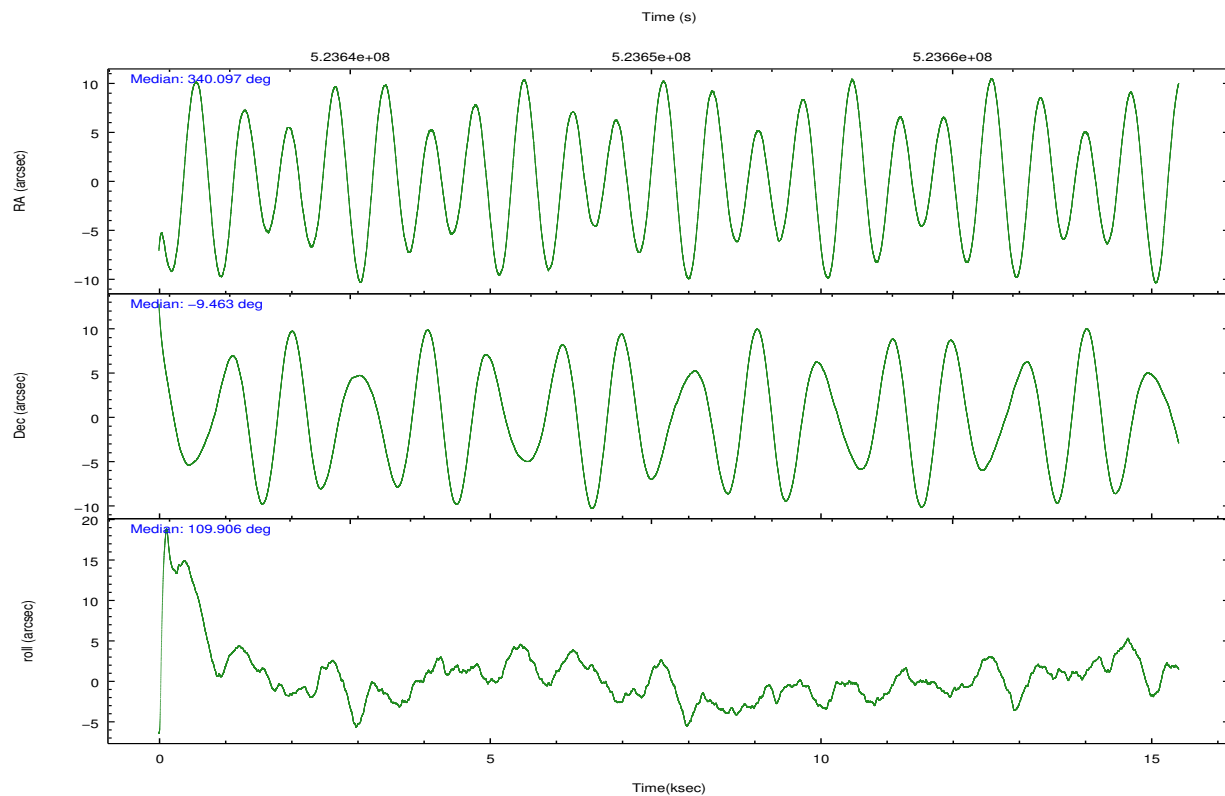
	ccd 2	ccd 3	ccd 5	ccd 6	ccd 7
level 1 events	66285	64566	118166	71821	83324
rejected events	58507	57116	56505	63342	44390
rejected %	88%	88%	47%	88%	53%

	ccd 2	ccd 3	ccd 5	ccd 6	ccd 7
grade 0 events	3009	2602	11360	3023	3796
	4%	4%	9%	4%	4%
grade 1 events	45	48	253	36	132
	0%	0%	0%	0%	0%
grade 2 events	1858	1712	17847	1942	8307
	2%	2%	15%	2%	9%
grade 3 events	776	818	2058	839	3308
	1%	1%	1%	1%	3%
grade 4 events	728	807	1884	823	3206
	1%	1%	1%	1%	3%
grade 5 events	2540	3097	8031	3112	8822
	3%	4%	6%	4%	10%
grade 6 events	1408	1511	28529	1854	20328
	2%	2%	24%	2%	24%
grade 7 events	55921	53971	48204	60192	35425
	84%	83%	40%	83%	42%

2.2 Compared Parameters

Parameter	Planned	Actual	Parameter	Planned	Actual
Instrument	ACIS	ACIS	Obspar format version number	7	7
Detector	ACIS-23567	ACIS-23567	Obspar file type	PREDICTED	ACTUAL
Grating	NONE	NONE	Obspar update status	NONE	UPDATED
Data mode	VFAINT	VFAINT	CCD I0 on	N	N
Observation mode	POINTING	POINTING	CCD I1 on	N	N
[deg] Pointing RA	340.118871	340.097312278948	CCD I2 on	O3	Y
[deg] Pointing Dec	-9.479998	-9.462586373254002	CCD I3 on	O2	Y
[deg] Pointing Roll	109.753142	109.9062121717969	CCD S0 on	N	N
[mm] SIM focus pos	-0.684267	-0.6828225247311905	CCD S1 on	O1	Y
[mm] SIM defocus	0	0.001444936568705701	CCD S2 on	O4	Y
[mm] SIM translation stage pos	-190.132523	-190.1425803651734	CCD S3 on	Y	Y
[mm] SIM translation stage offset	0	0.01005778216563158	CCD S4 on	N	N
[s] Observation start time (MET)	523642722.184000	523641620.76444	CCD S5 on	N	N
Observation start date	2014-08-05T16:17:35	2014-08-05T16:00:20	Number of optional ACIS chips dropped	0	0
[s] Observation end time (MET)	523658000.184000	523658227.30286	On-chip summing requested	N	N
Observation end date	2014-08-05T20:32:13	2014-08-05T20:37:07	Subarray requested	NONE	NONE
Read mode	TIMED	TIMED	Alternating exposures requested	N	N
			[s] Primary exposure time	0.000000	3.1

2.3 Aspect

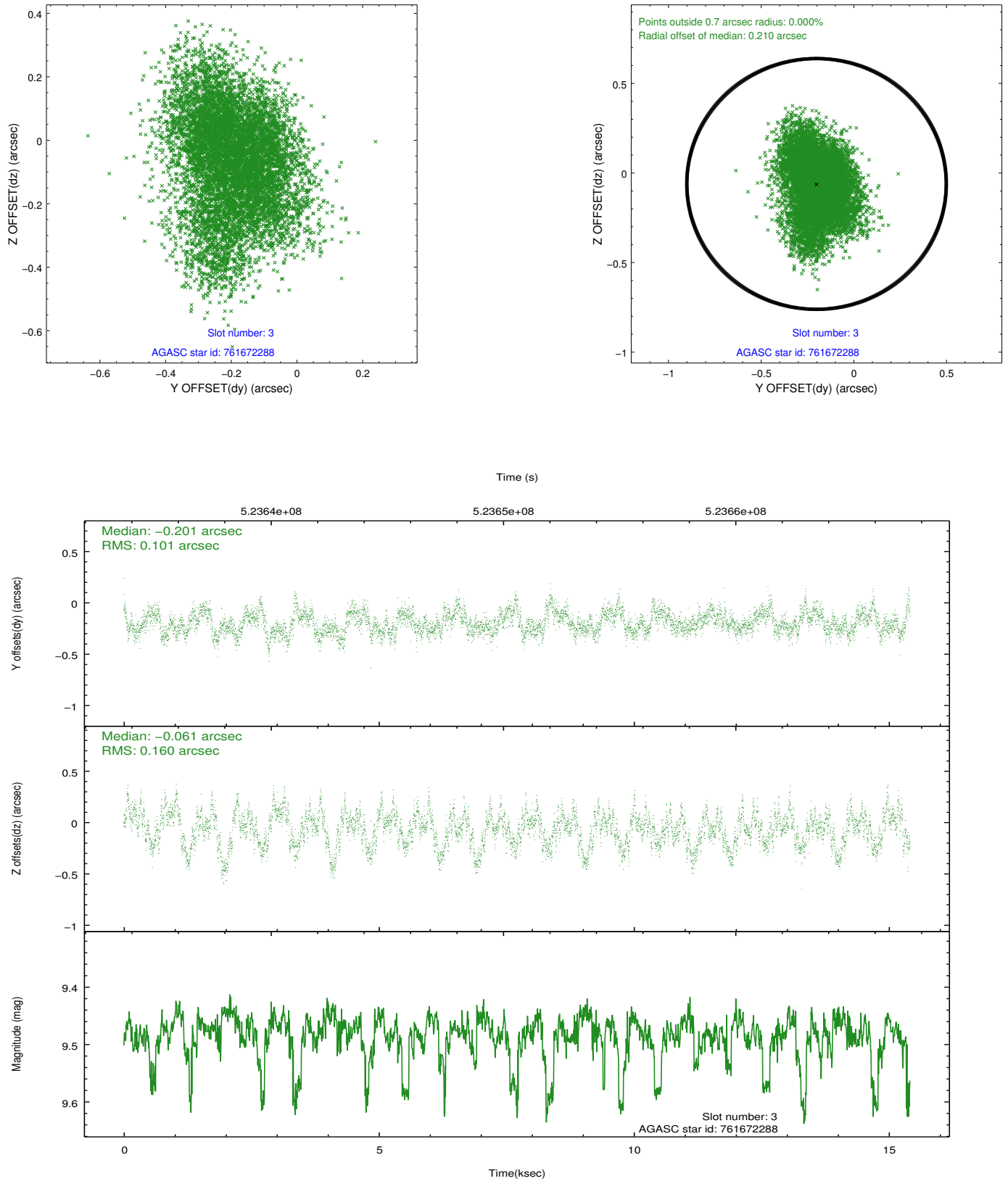


Slot Statistics

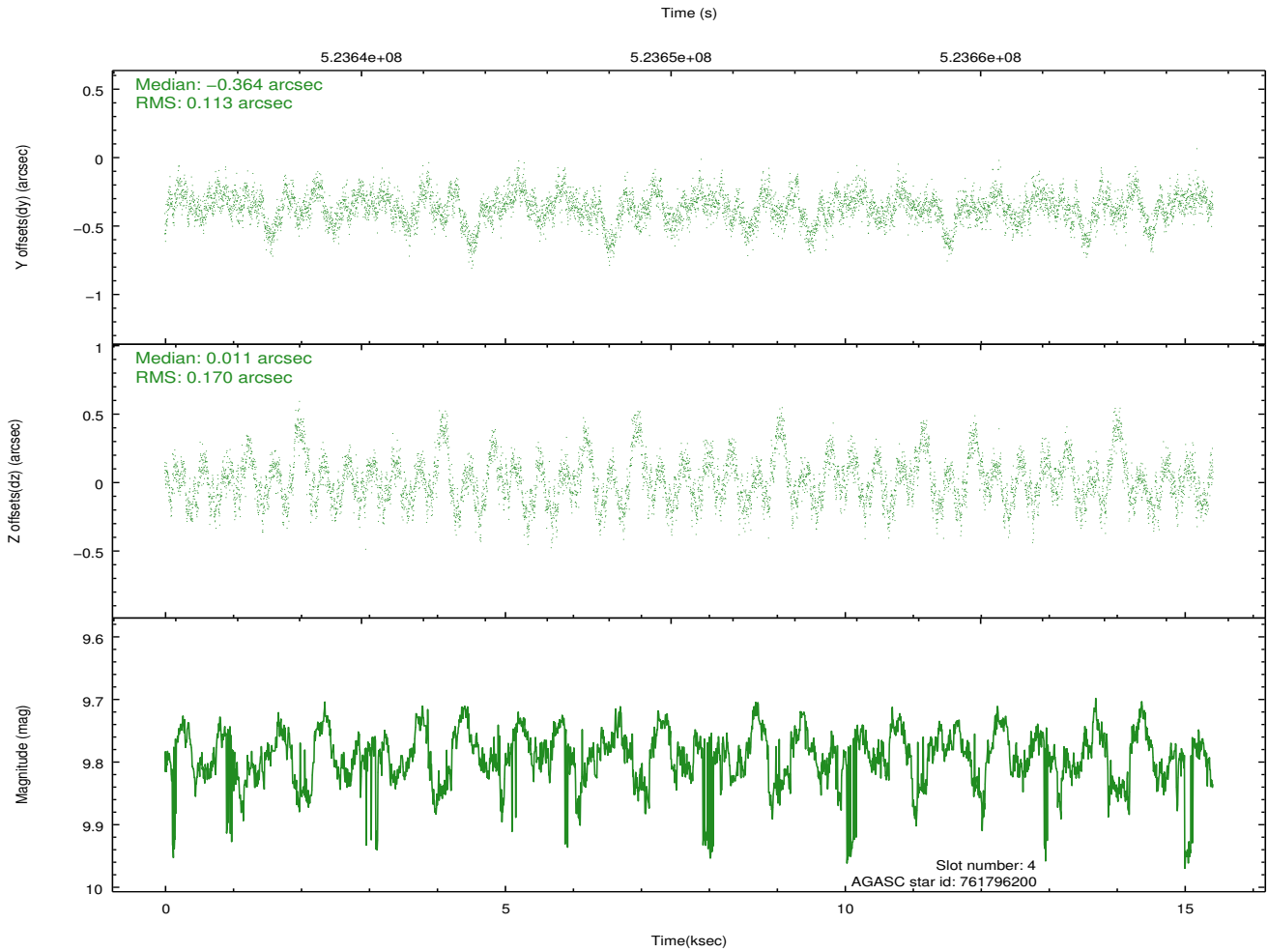
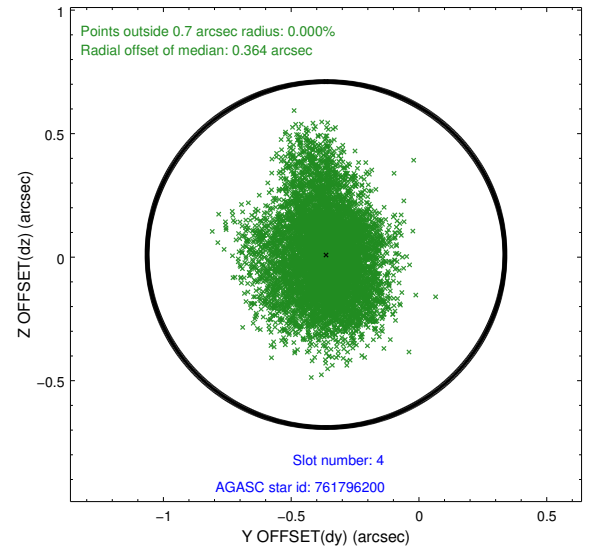
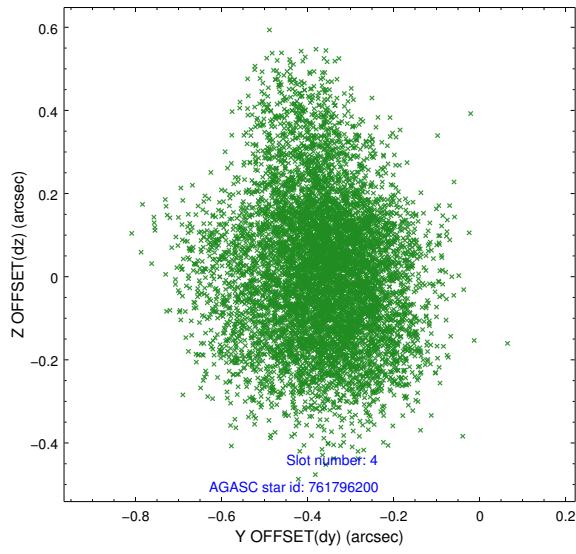
slot	status	id	mag	n_pts	med_dy	med_dz	dr1	dr2	ra	dec	mean_y	mean_z
0	FID	ACIS-S-1	7.04	3761	0.103	-0.043	0.013	0.023	0.000000	0.000000	915.24	-1739.53
1	FID	ACIS-S-5	7.07	3761	-0.239	0.051	0.013	0.027	0.000000	0.000000	-1833.98	157.75
2	FID	ACIS-S-6	7.17	3761	0.115	0.002	0.018	0.027	0.000000	0.000000	380.42	802.05
3	GUIDE	761672288	9.48	7516	-0.201	-0.061	0.200	0.335	339.493021	-9.404343	1005.34	2000.89
4	GUIDE	761796200	9.79	7494	-0.364	0.011	0.216	0.358	339.590570	-9.469829	666.74	1754.01
5	GUIDE	761802048	7.03	7520	0.047	-0.023	0.094	0.149	340.033256	-9.359234	511.68	136.94
6	GUIDE	762194256	7.06	7522	0.192	0.053	0.100	0.150	339.816781	-10.027795	-1494.31	1675.39
7	GUIDE	762187336	9.25	7515	0.325	0.022	0.124	0.201	339.866017	-10.077563	-1722.12	1571.00

2.4 Star Slots

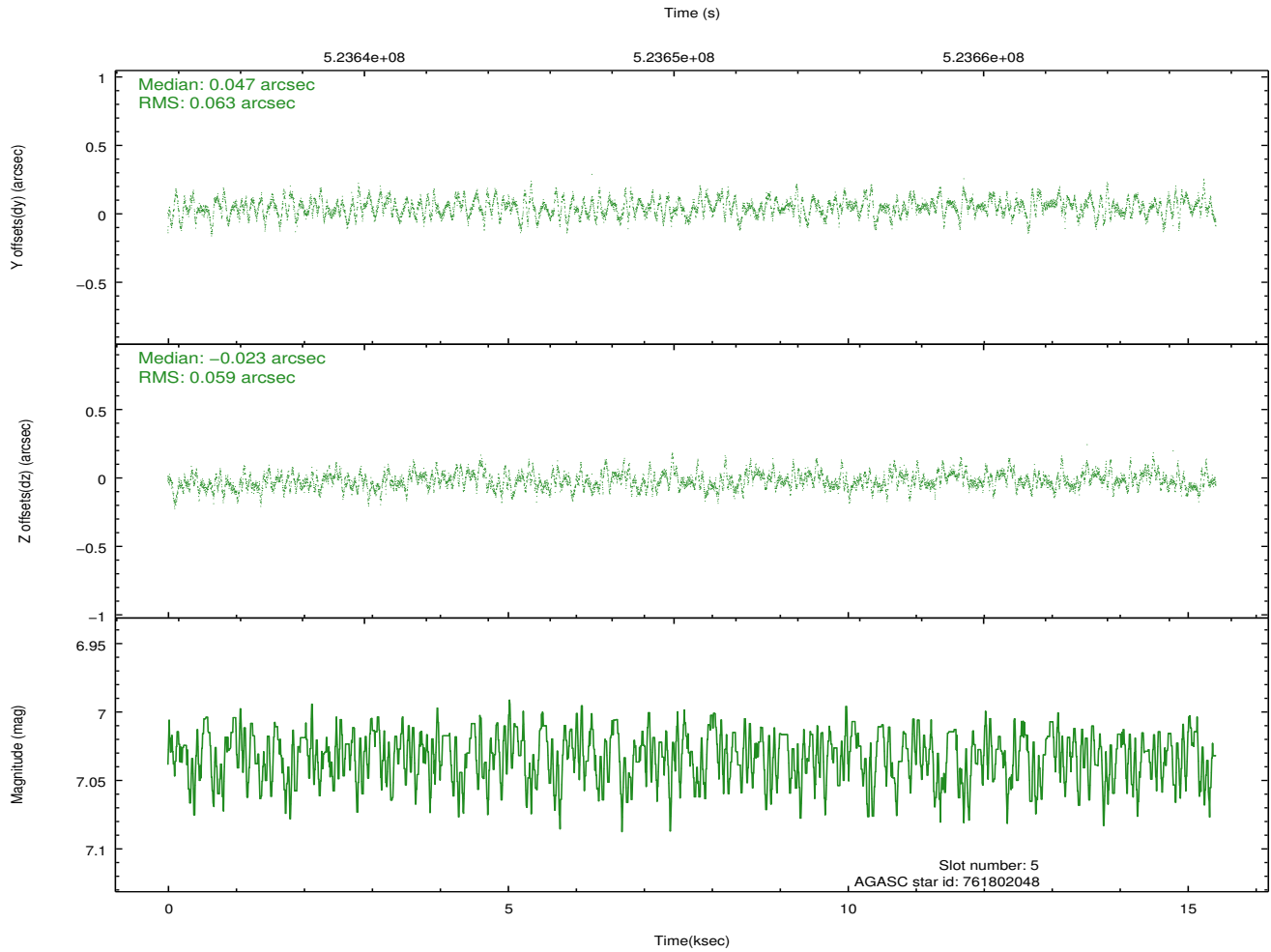
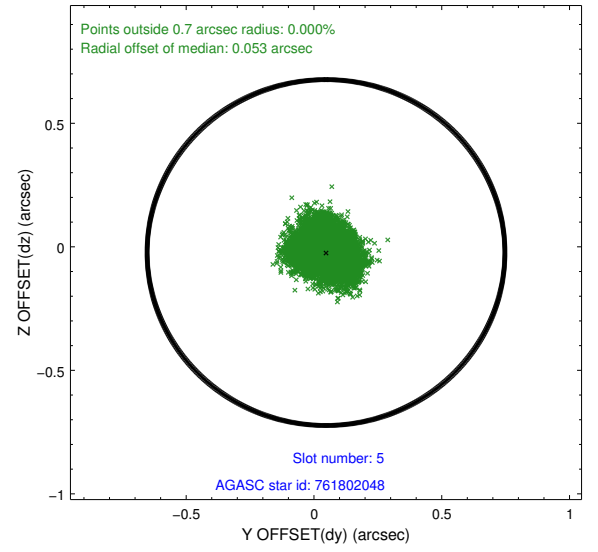
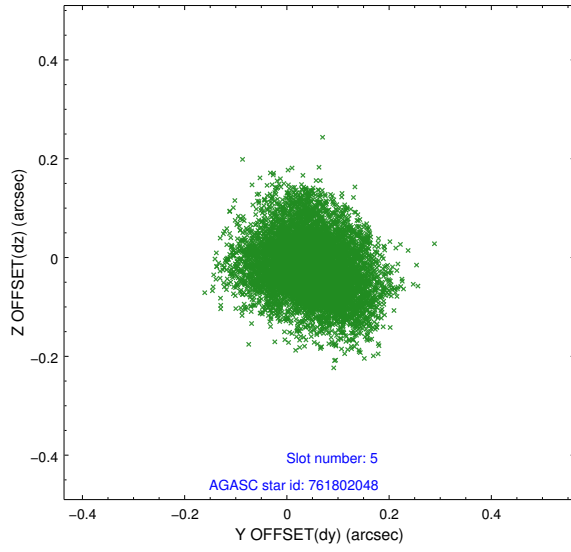
2.4.1 Slot 3



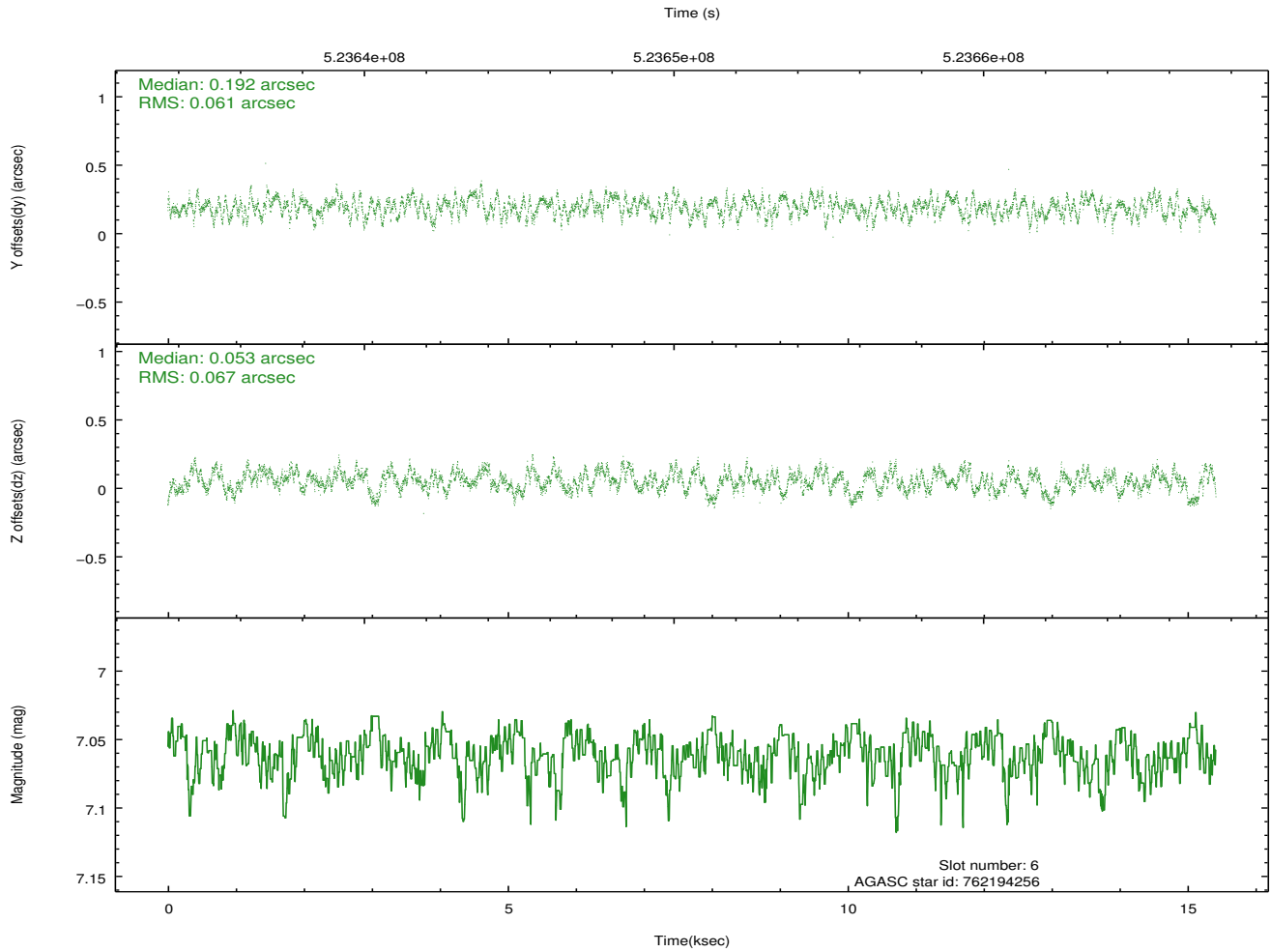
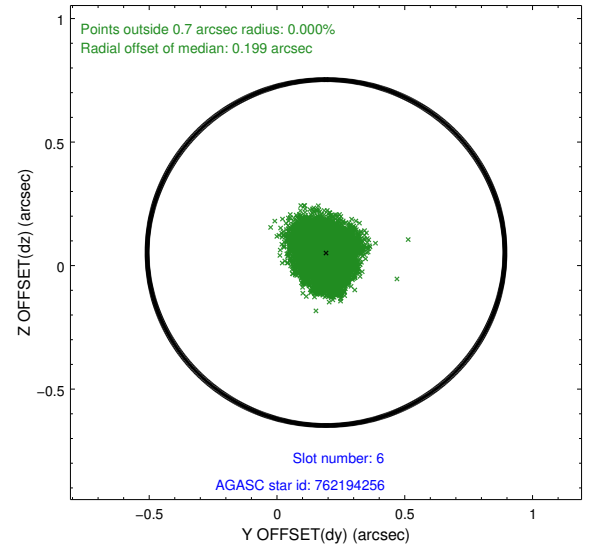
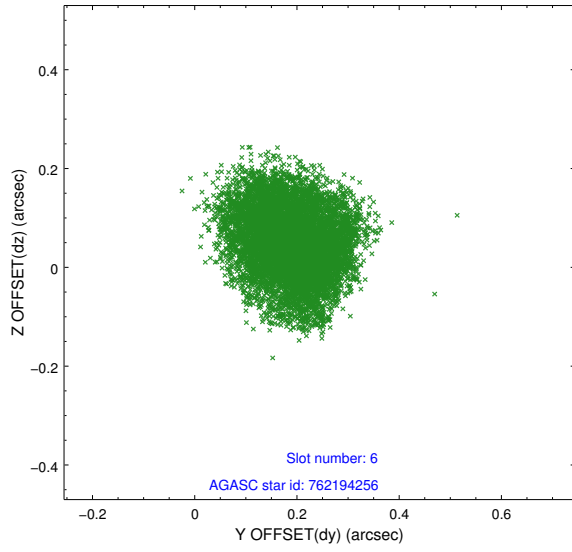
2.4.2 Slot 4



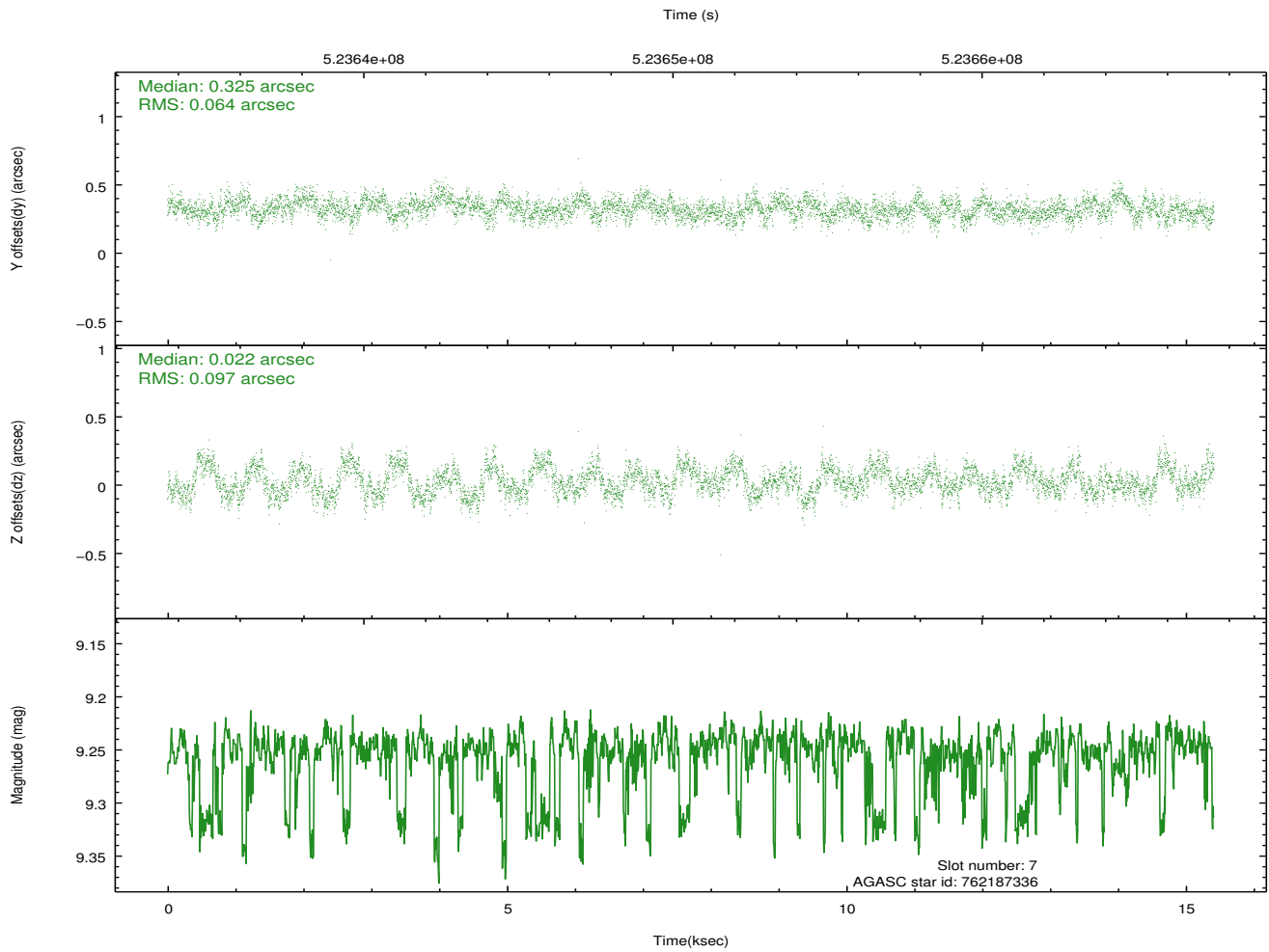
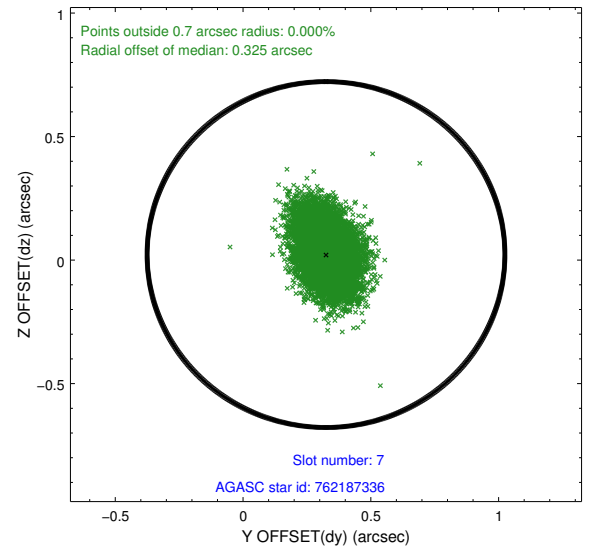
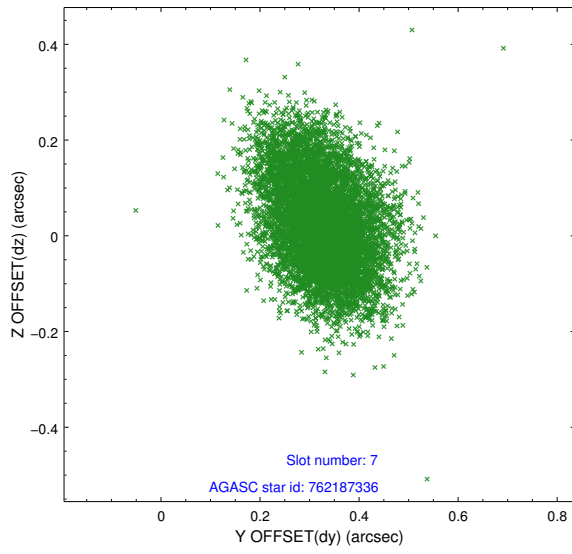
2.4.3 Slot 5



2.4.4 Slot 6

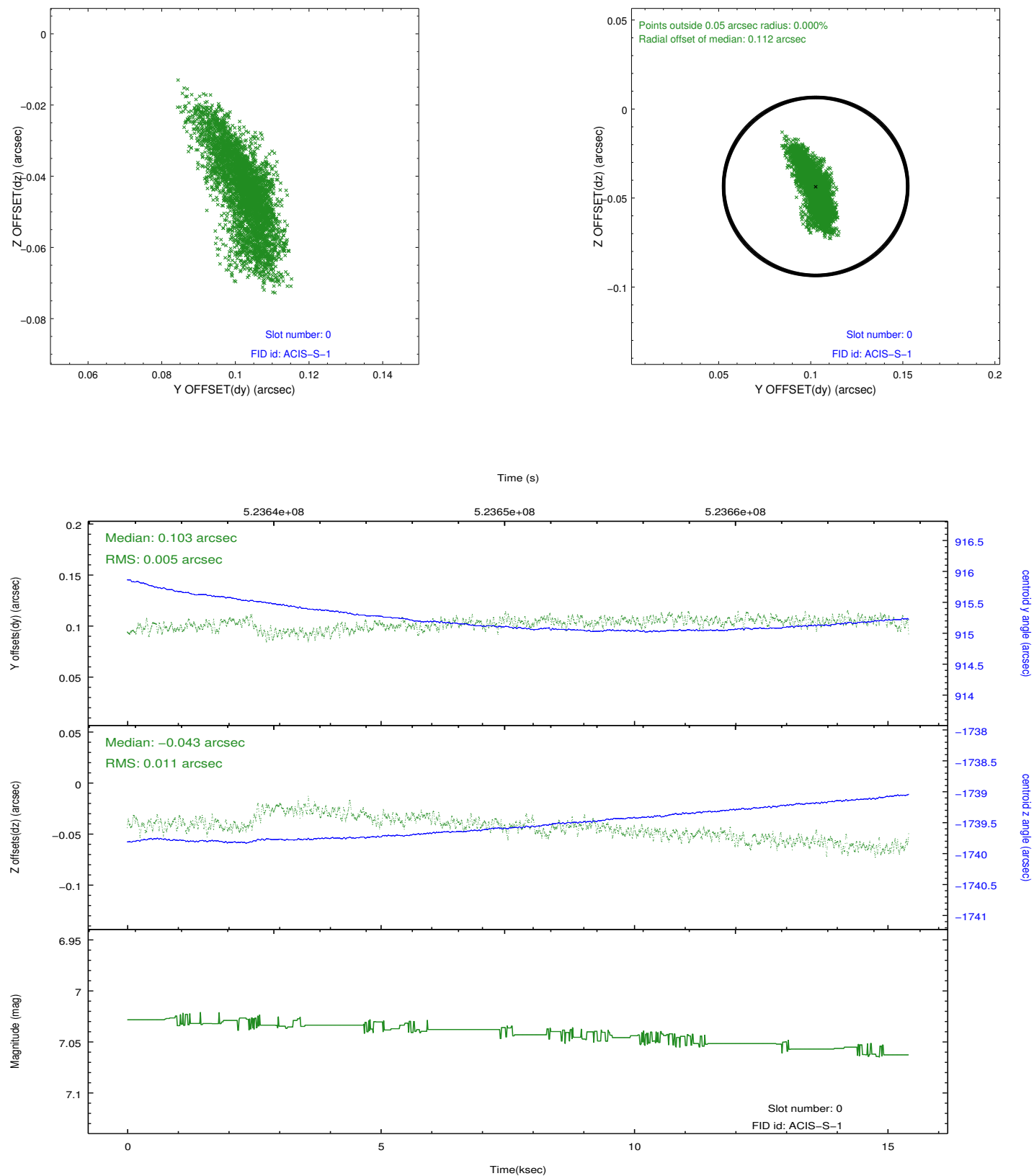


2.4.5 Slot 7

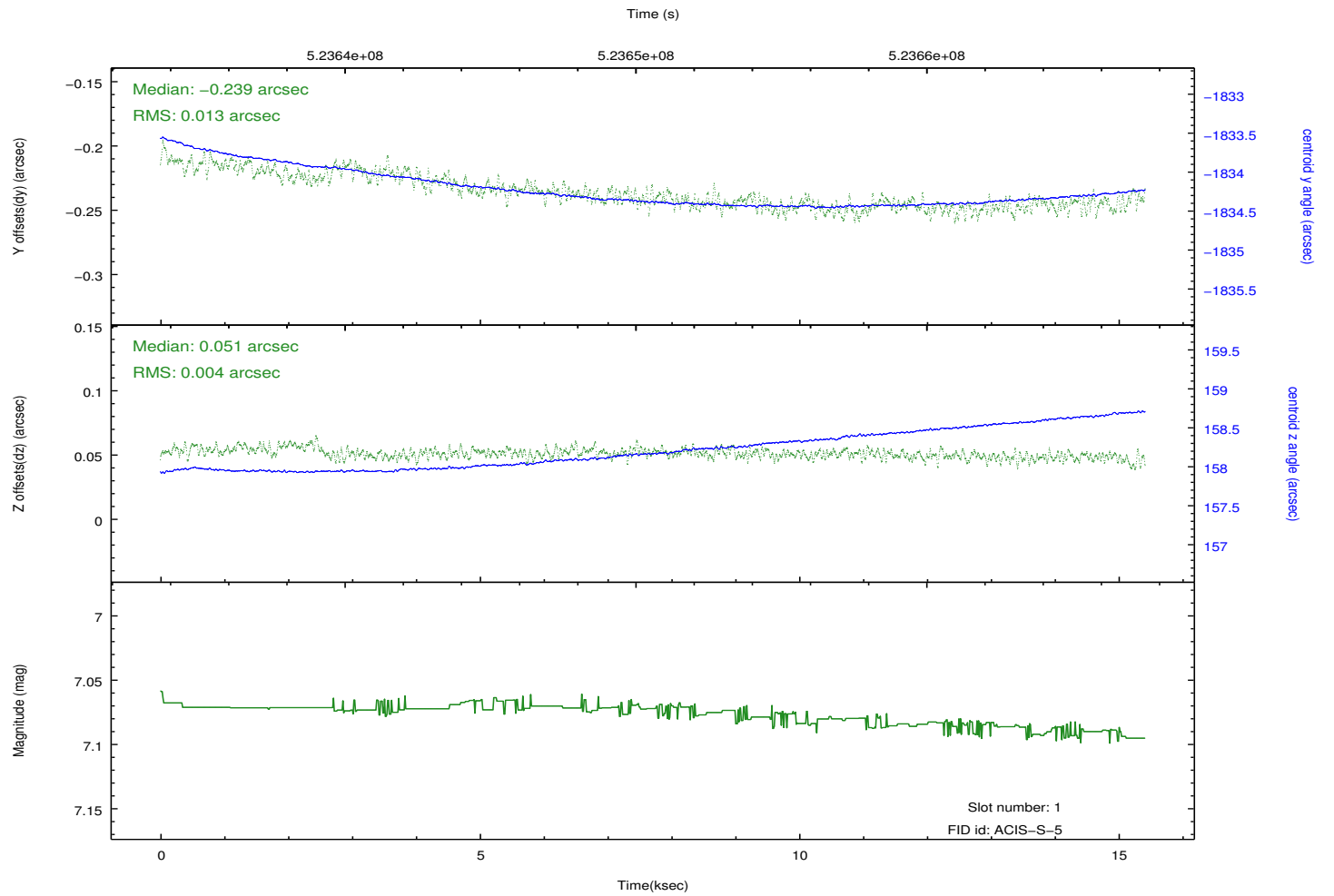
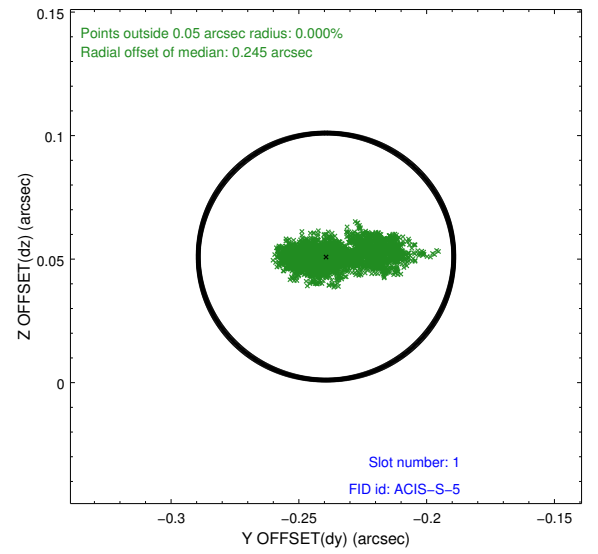
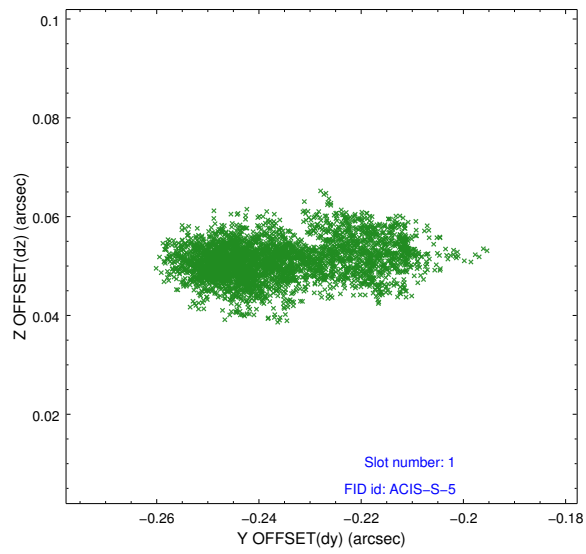


2.5 FID Slots

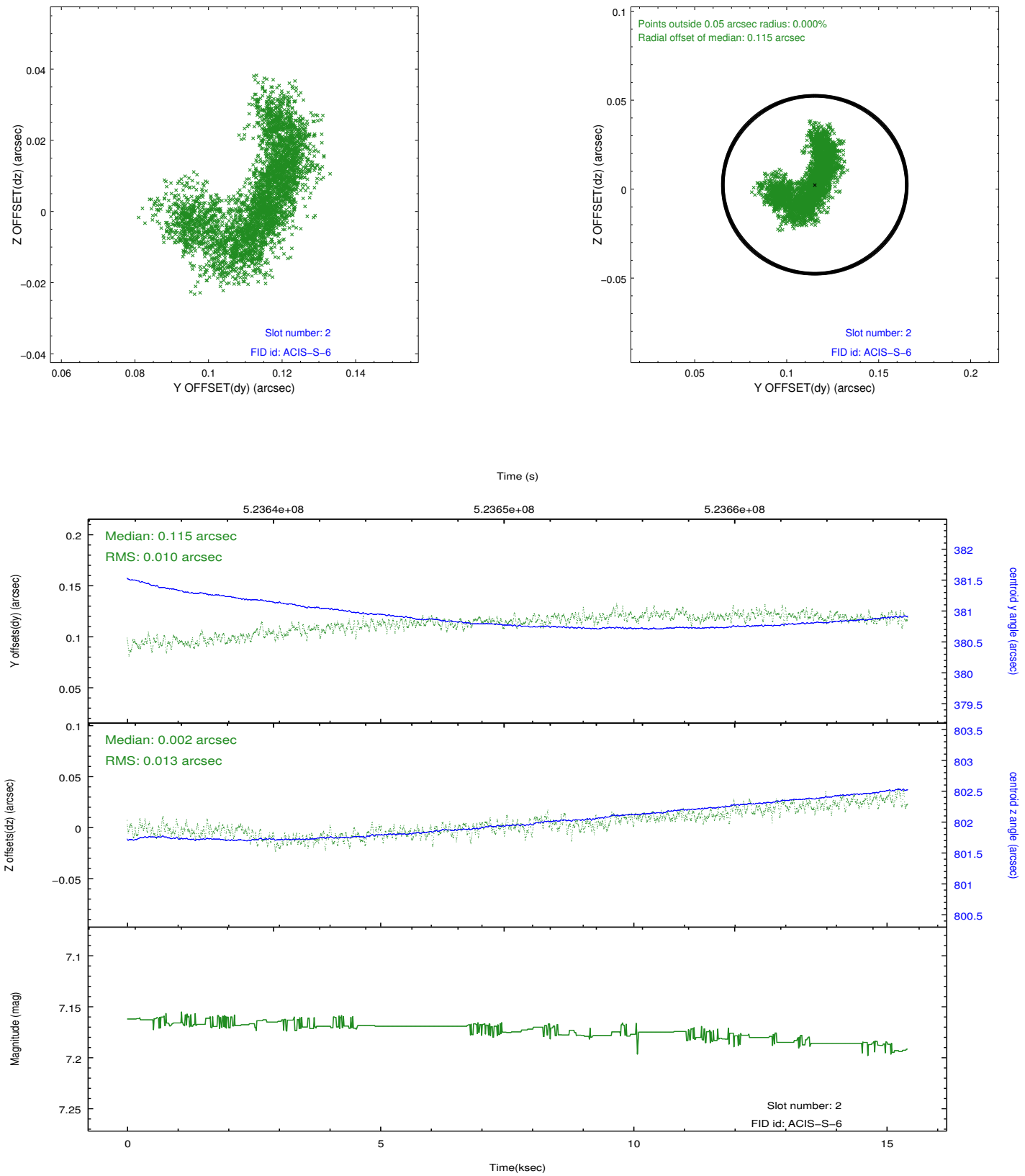
2.5.1 Slot 0



2.5.2 Slot 1



2.5.3 Slot 2



A Summary

A.1 Status

V&V Scientist	Beth Sundheim
V&V Date (YYYY-MM-DD)	2014.08.06
V&V Edition	1
V&V Disposition and Status	OK
V&V Charge Time	15.349990473926

A.2 Comments