

V&V Reference Report

L2 ASCDS Version : 10.2.4

Observation 16101 - L2 Version 1
Chandra X-Ray Center

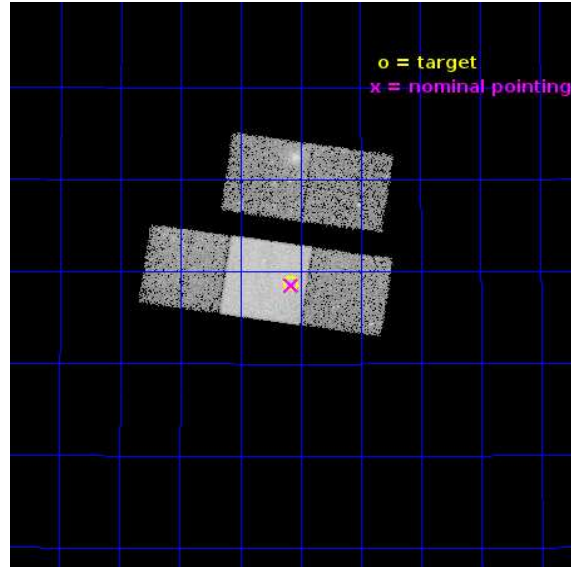
L2 Processing Date : Oct 4 2014

Contents

1	Front	2
2	OBI	3
2.1	OBI	3
2.1.1	Images	3
2.1.2	Bias	3
2.1.3	Parameters	4
2.1.4	Events	4
2.2	Compared Parameters	5
2.3	Aspect	6
2.4	Star Slots	9
2.4.1	Slot 3	9
2.4.2	Slot 4	10
2.4.3	Slot 5	11
2.4.4	Slot 6	12
2.4.5	Slot 7	13
2.5	FID Slots	14
2.5.1	Slot 0	14
2.5.2	Slot 1	15
2.5.3	Slot 2	16
A	Summary	17
A.1	Status	17
A.2	Comments	17

1 Front

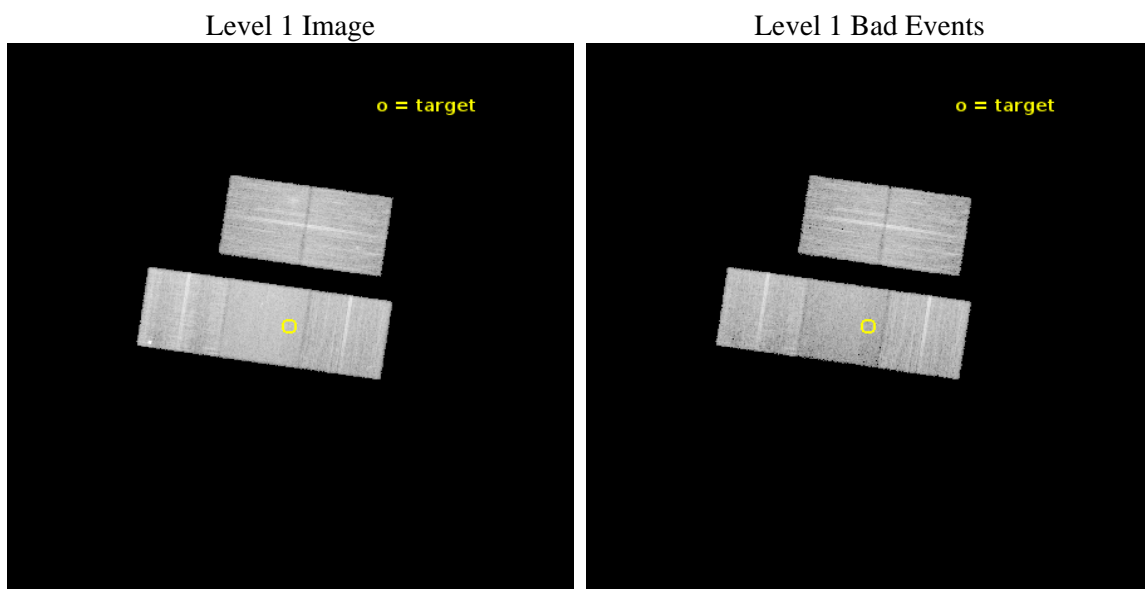
seq_num	702989	Sequence number
obs_id	16101	Observation id
title	Studying AGN evolution with ionization echoes	Proposal title
observer	Dr. Mischa Schirmer	Principal investigator
object	J002434.9+325842	Source name
dtcycle	0	
cycle	P	events from which exps? Prim/Second/Both
ra_targ	6.145417	Observer's specified target RA [deg]
dec_targ	32.978333	Observer's specified target Dec [deg]
ra_nom	6.1438206732407	Nominal RA [deg]
dec_nom	32.975502960145	Nominal Dec [deg]
roll_nom	188.35194558982	Nominal Roll [deg]
revision	1	Processing version of data
ontime	21064.500162005	Sum of GTIs [s]
livetime	20789.276959929	Livetime [s]
ontime2	21064.500162005	Sum of GTIs [s]
ontime3	21064.500162005	Sum of GTIs [s]
ontime6	21064.500162005	Sum of GTIs [s]
ontime7	21064.500162005	Sum of GTIs [s]
ontime8	21064.500162005	Sum of GTIs [s]
l2events	93942	Number of level 2 events



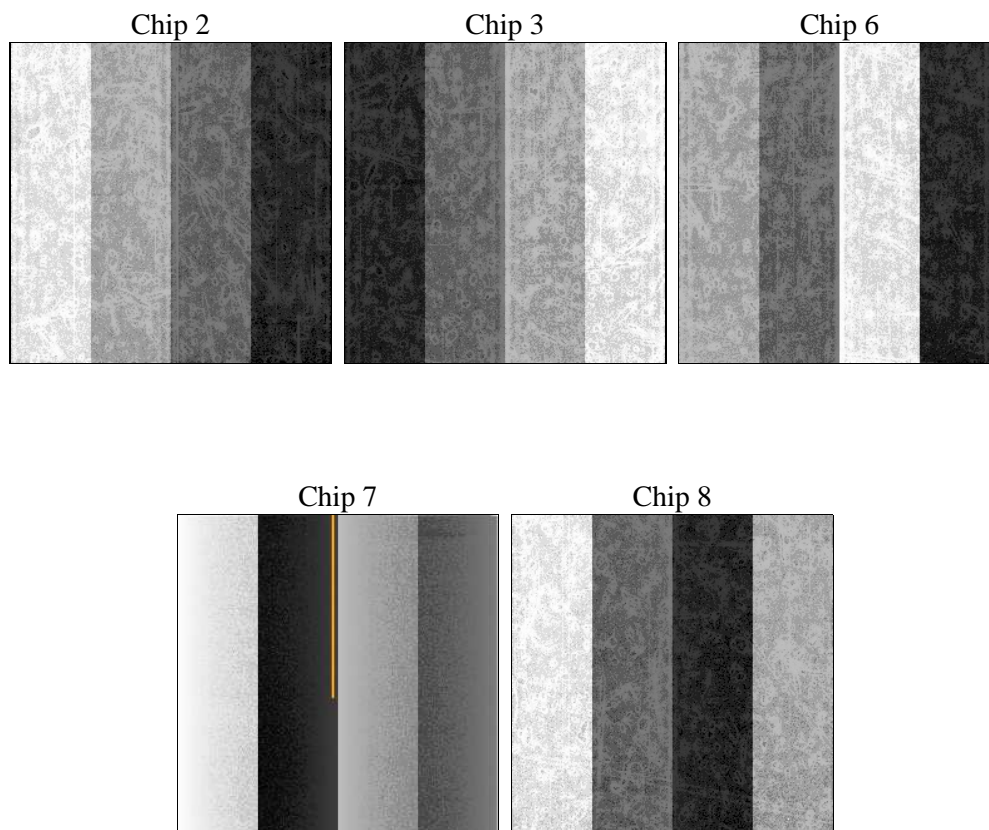
2 OBI

2.1 OBI

2.1.1 Images



2.1.2 Bias



2.1.3 Parameters

obi_num	1	Obi number	sched_exp_time	21000.000000	[s] Scheduled observation exposure time
ascdsver	10.2.4	Processing system revision	ontime	21064.500162005	Sum of GTIs [s]
caldsver	4.6.3	 	ontime2	21064.500162005	Sum of GTIs [s]
date	2014-10-05T02:41:16	Date and time of file creation	ontime3	21064.500162005	Sum of GTIs [s]
revision	1	Processing version of data	ontime6	21064.500162005	Sum of GTIs [s]
			ontime7	21064.500162005	Sum of GTIs [s]
			ontime8	21064.500162005	Sum of GTIs [s]
			l1events	529760	Number of level 1 events

2.1.4 Events

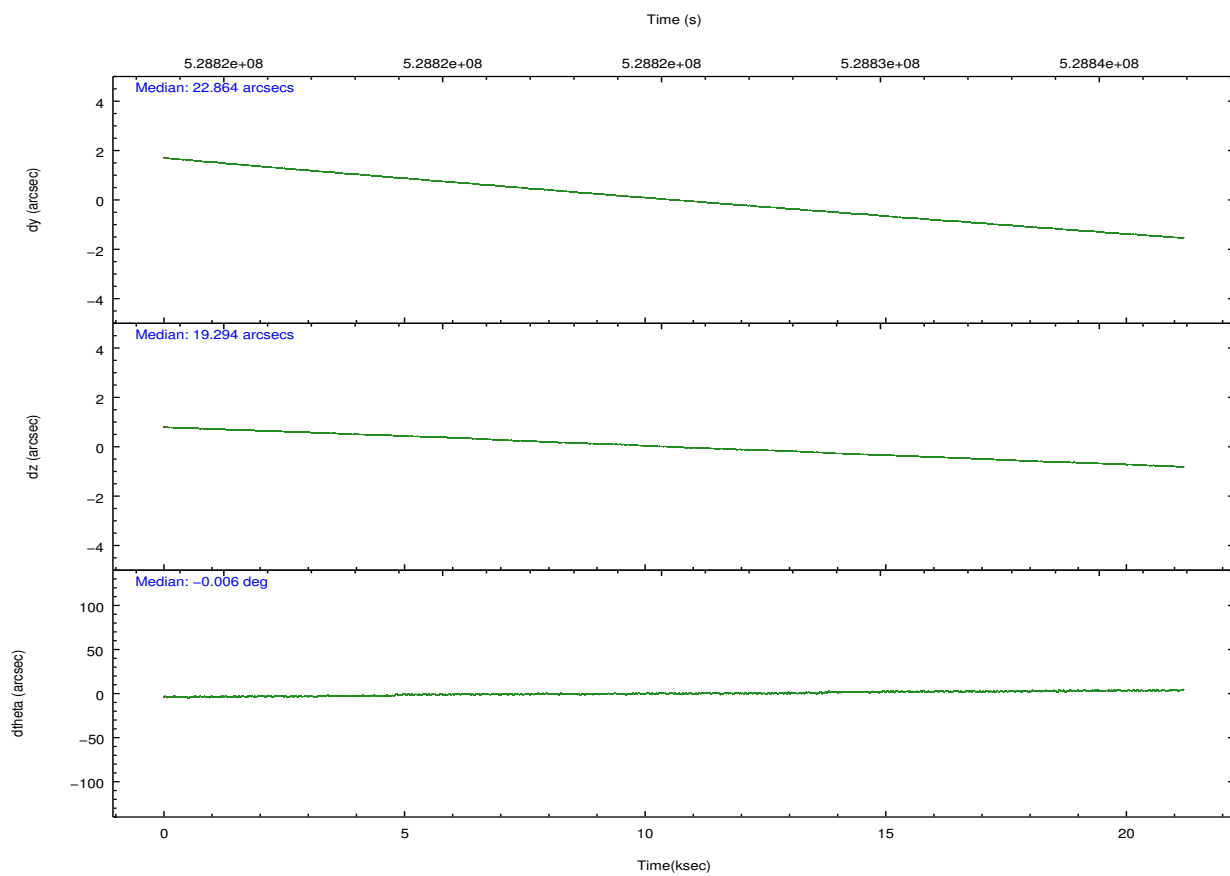
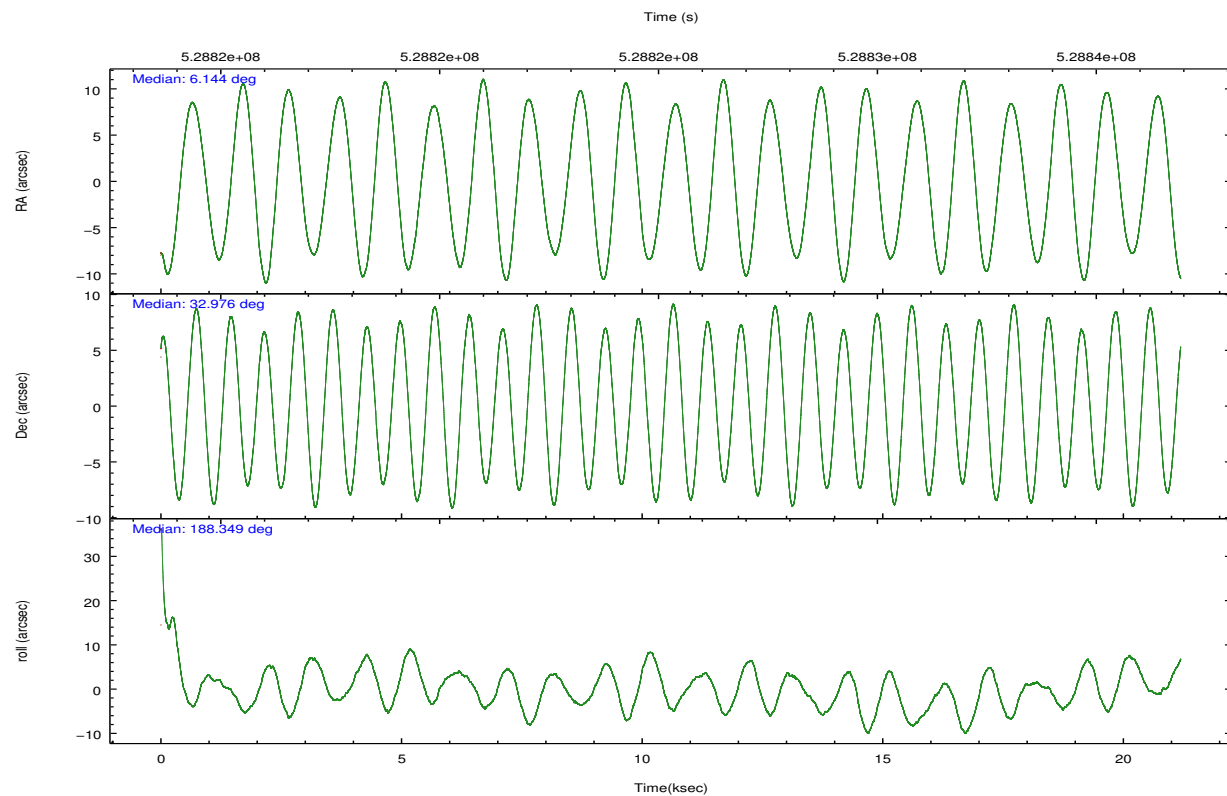
	ccd 2	ccd 3	ccd 6	ccd 7	ccd 8
level 1 events	96341	94590	99596	114974	124259
rejected events	85349	82189	87239	62010	89142
rejected %	88%	86%	87%	53%	71%

	ccd 2	ccd 3	ccd 6	ccd 7	ccd 8
grade 0 events	4251	5462	4610	4865	10393
	4%	5%	4%	4%	8%
grade 1 events	50	55	54	159	90
	0%	0%	0%	0%	0%
grade 2 events	2580	2498	2833	11262	8710
	2%	2%	2%	9%	7%
grade 3 events	1073	1165	1150	4464	3447
	1%	1%	1%	3%	2%
grade 4 events	1120	1117	1161	4363	3254
	1%	1%	1%	3%	2%
grade 5 events	3474	4358	4250	11914	6574
	3%	4%	4%	10%	5%
grade 6 events	1971	2164	2610	28022	9323
	2%	2%	2%	24%	7%
grade 7 events	81822	77771	82928	49925	82468
	84%	82%	83%	43%	66%

2.2 Compared Parameters

Parameter	Planned	Actual	Parameter	Planned	Actual
Instrument	ACIS	ACIS	Obspar format version number	7	7
Detector	ACIS-23678	ACIS-23678	Obspar file type	PREDICTED	ACTUAL
Grating	NONE	NONE	Obspar update status	NONE	UPDATED
Data mode	VFAINT	VFAINT	CCD I0 on	N	N
Observation mode	POINTING	POINTING	CCD I1 on	N	N
[deg] Pointing RA	6.169231	6.143820673240668	CCD I2 on	O3	Y
[deg] Pointing Dec	32.992825	32.97550296014484	CCD I3 on	O2	Y
[deg] Pointing Roll	188.181472	188.3519455898189	CCD S0 on	N	N
[mm] SIM focus pos	-0.684267	-0.6828225247311905	CCD S1 on	N	N
[mm] SIM defocus	0	0.001444936568705701	CCD S2 on	O4	Y
[mm] SIM translation stage pos	-190.132523	-190.1425803651734	CCD S3 on	Y	Y
[mm] SIM translation stage offset	0	0.01005778216563158	CCD S4 on	O1	Y
[s] Observation start time (MET)	528814879.184000	528813346.18897	CCD S5 on	N	N
Observation start date	2014-10-04T13:00:12	2014-10-04T12:35:46	Number of optional ACIS chips dropped	0	0
[s] Observation end time (MET)	528835879.184000	528836909.40278	On-chip summing requested	N	N
Observation end date	2014-10-04T18:50:12	2014-10-04T19:08:29	Subarray requested	NONE	NONE
Read mode	TIMED	TIMED	Alternating exposures requested	N	N
			[s] Primary exposure time	0.000000	3.1

2.3 Aspect

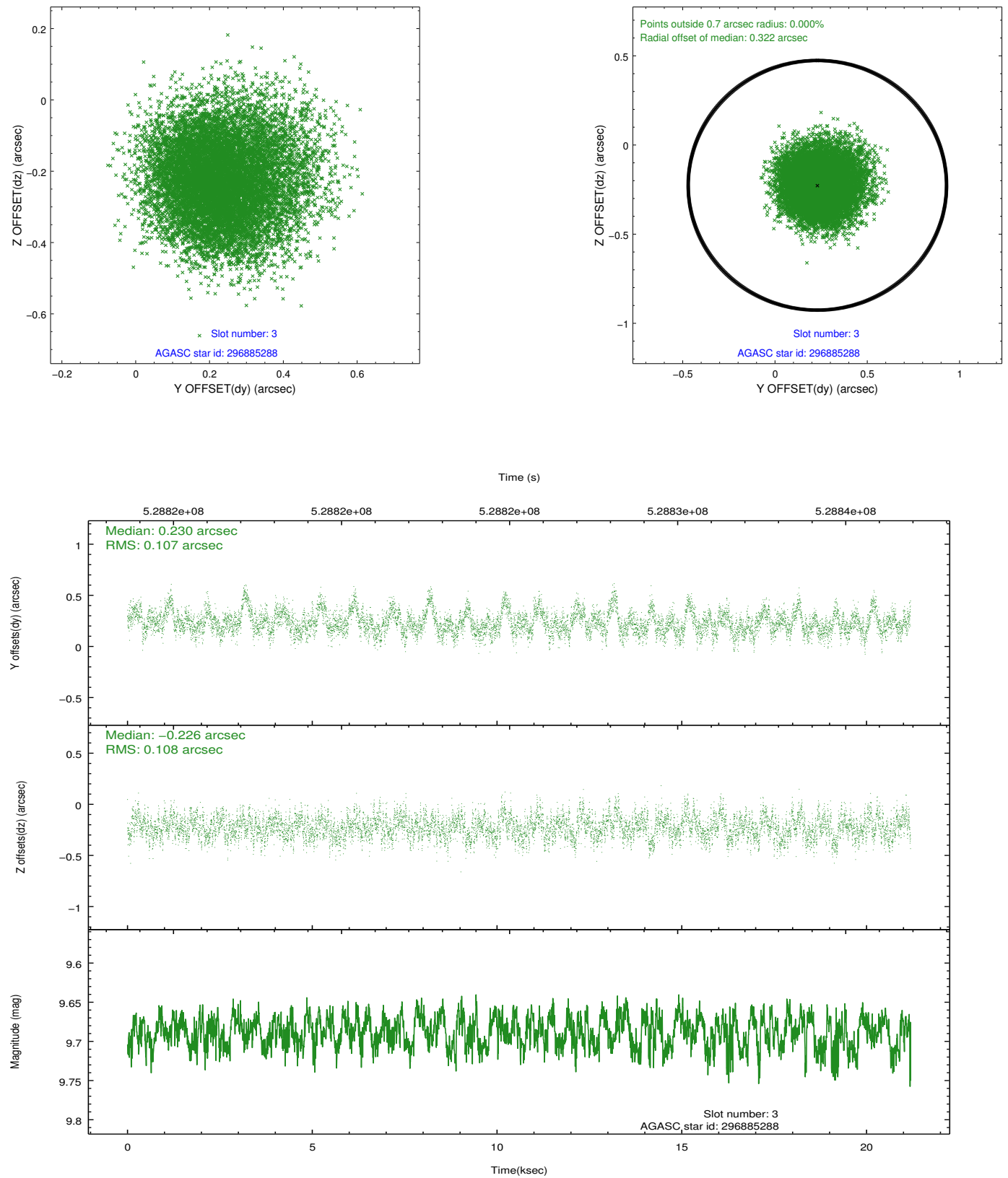


Slot Statistics

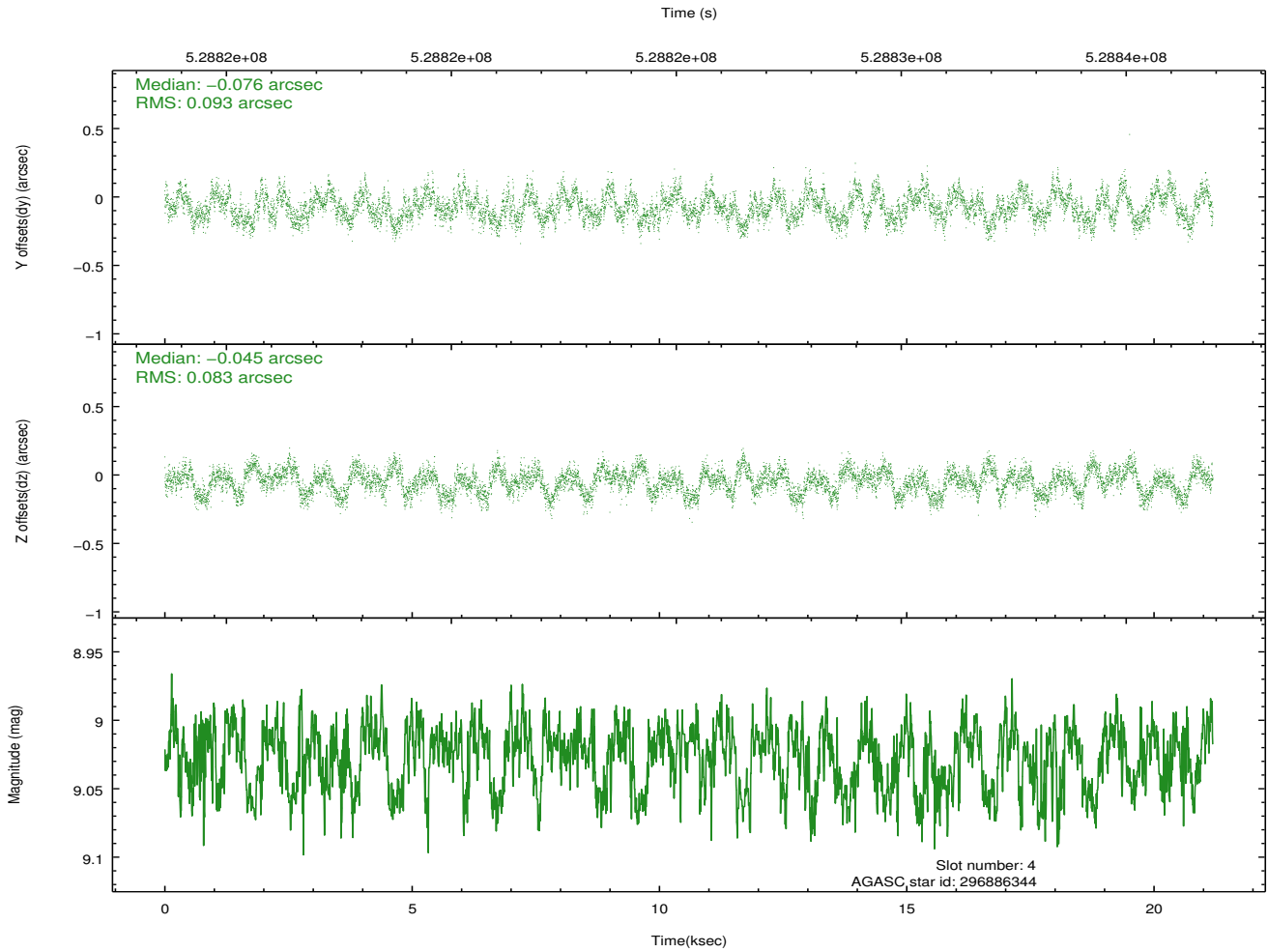
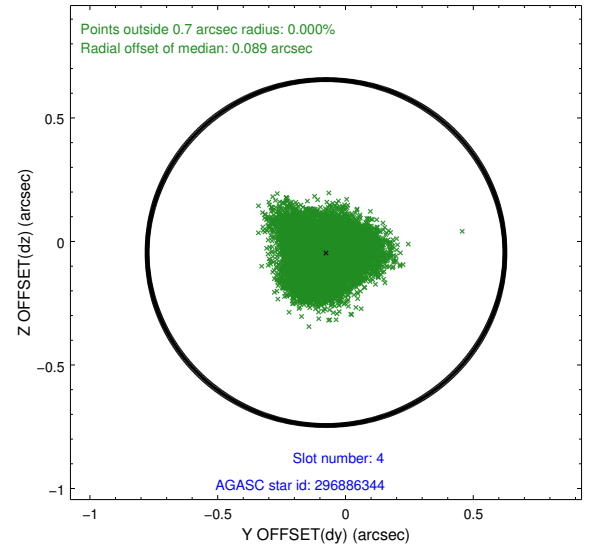
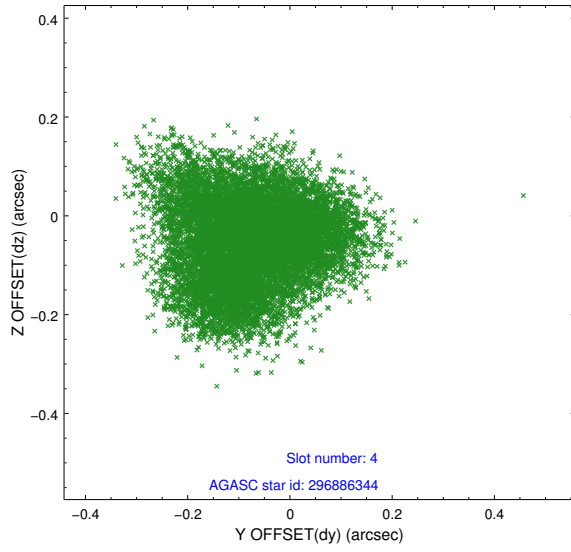
slot	status	id	mag	n_pts	med_dy	med_dz	dr1	dr2	ra	dec	mean_y	mean_z
0	FID	ACIS-S-4	7.16	5169	0.265	0.007	0.021	0.034	0.000000	0.000000	2137.53	167.98
1	FID	ACIS-S-5	7.19	5169	-0.305	0.002	0.045	0.067	0.000000	0.000000	-1829.01	161.38
2	FID	ACIS-S-6	7.29	5168	0.011	0.004	0.029	0.038	0.000000	0.000000	385.34	805.17
3	GUIDE	296885288	9.69	10328	0.230	-0.226	0.162	0.261	6.520854	33.211110	-1161.08	-628.03
4	GUIDE	296886344	9.03	10327	-0.076	-0.045	0.137	0.206	5.443181	33.136615	2092.00	-830.95
5	GUIDE	296887424	7.70	10335	-0.187	-0.051	0.238	0.327	5.582095	33.068362	1714.41	-525.78
6	GUIDE	296891608	9.33	10332	-0.214	-0.191	0.120	0.192	5.874936	33.008955	871.38	-184.93
7	GUIDE	296891784	9.23	10330	0.209	0.511	0.136	0.209	6.108550	33.041072	157.29	-197.13

2.4 Star Slots

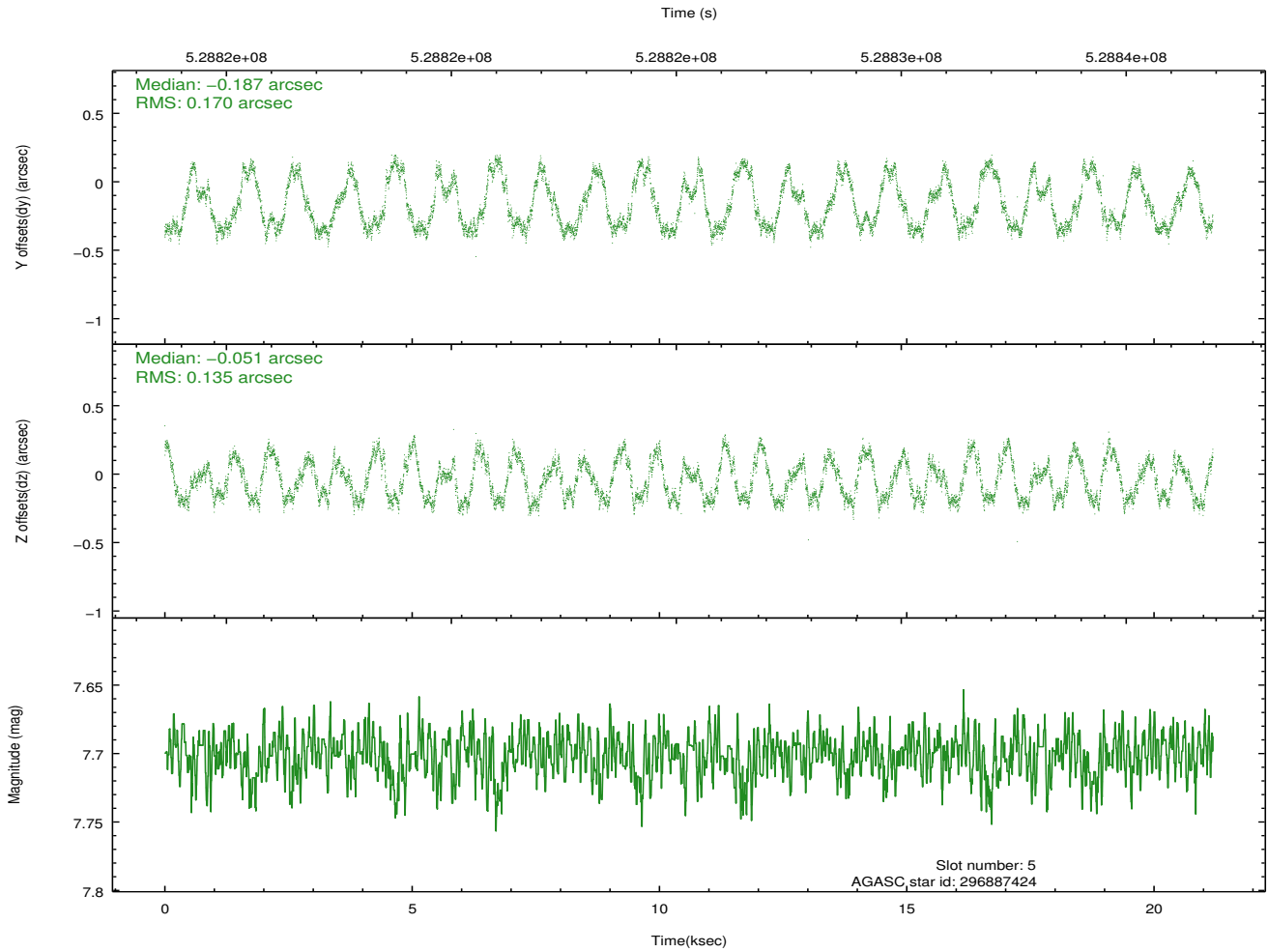
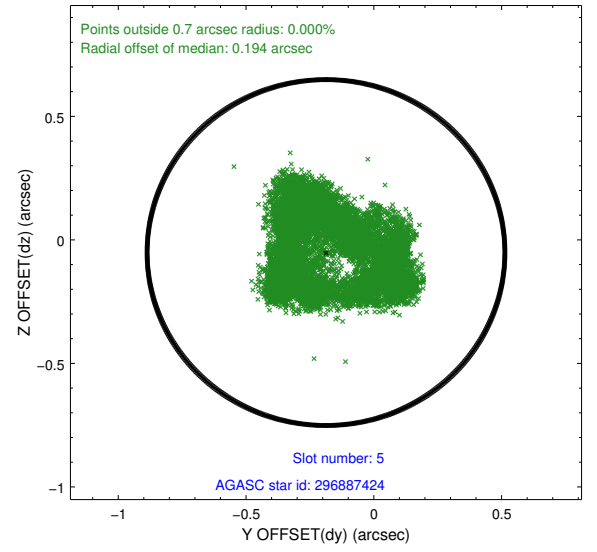
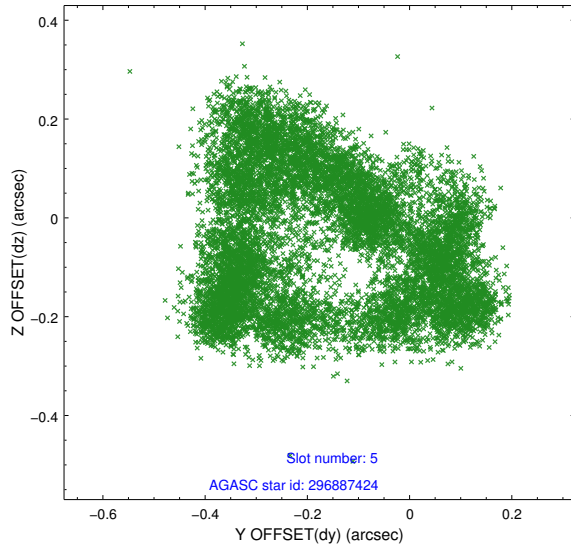
2.4.1 Slot 3



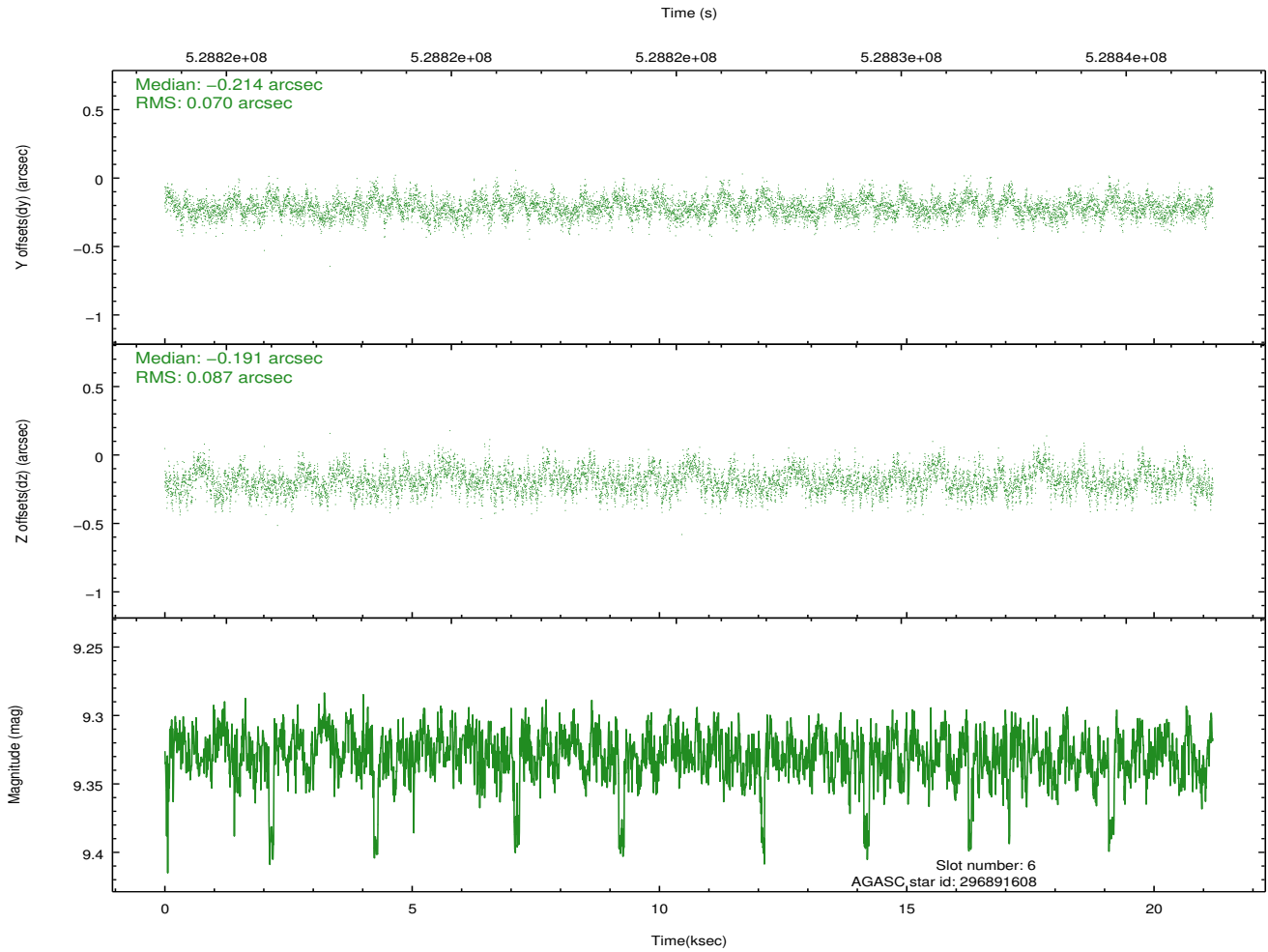
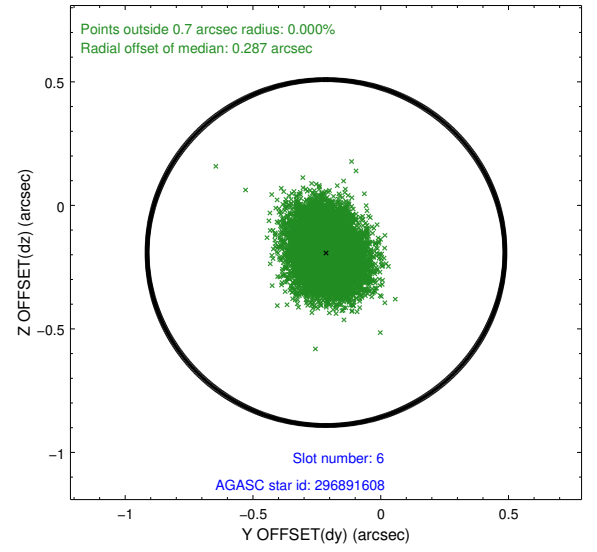
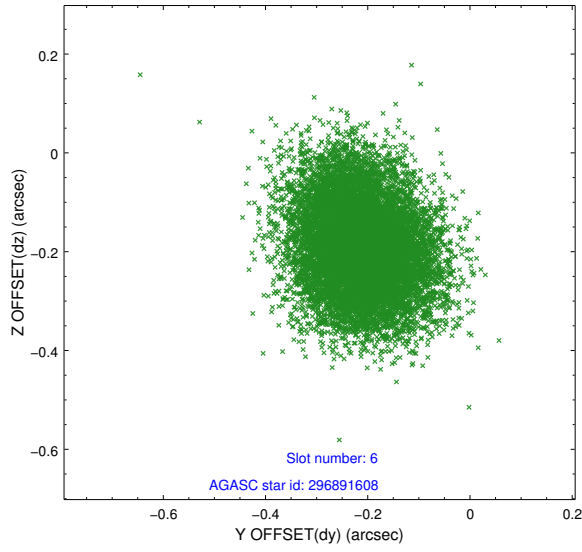
2.4.2 Slot 4



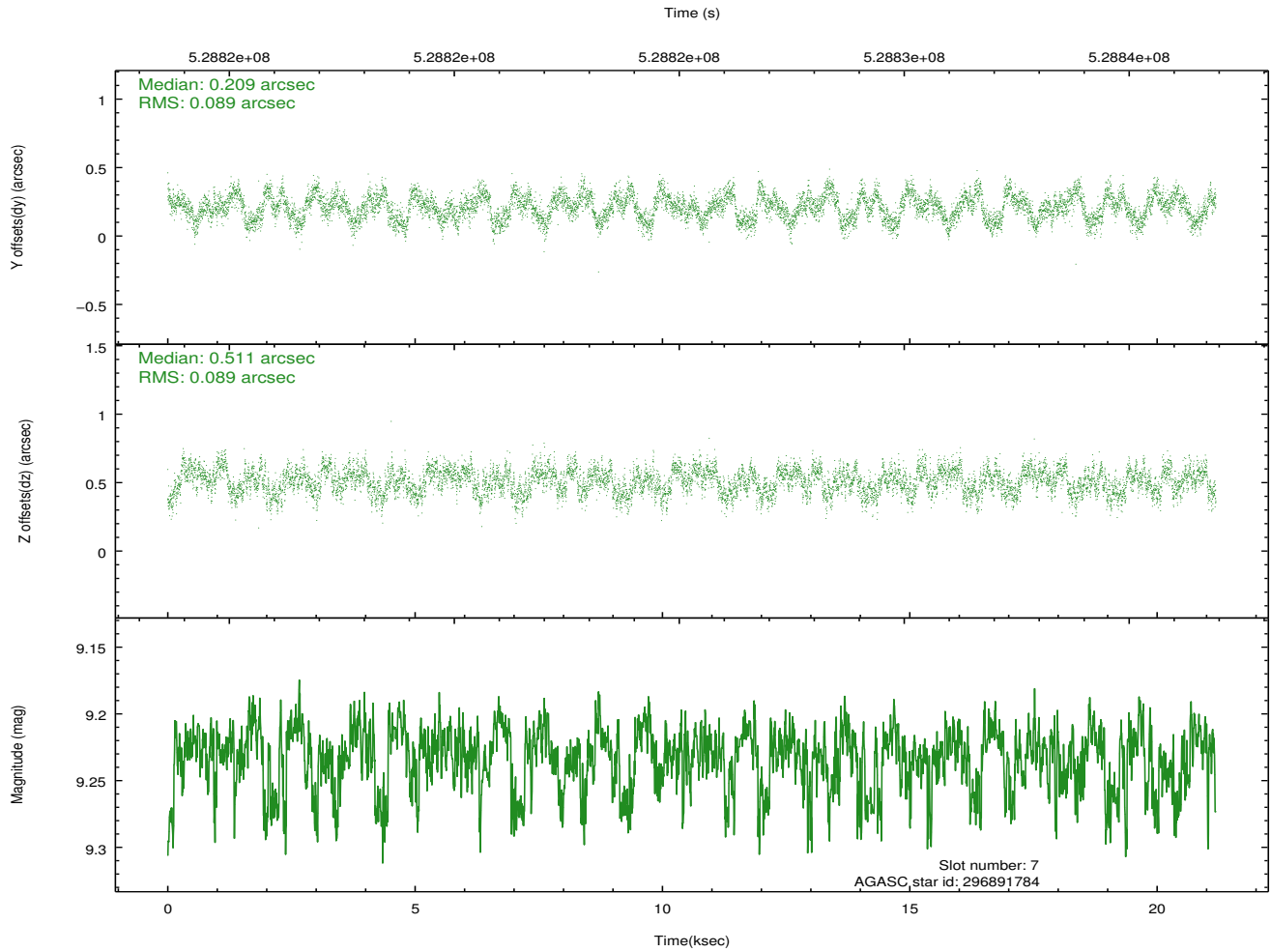
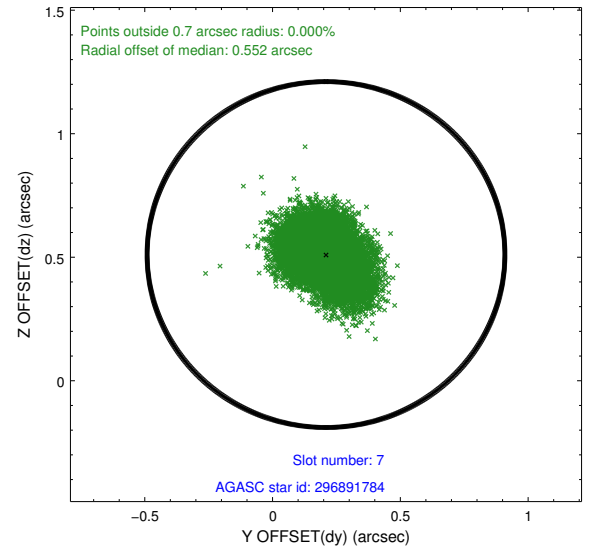
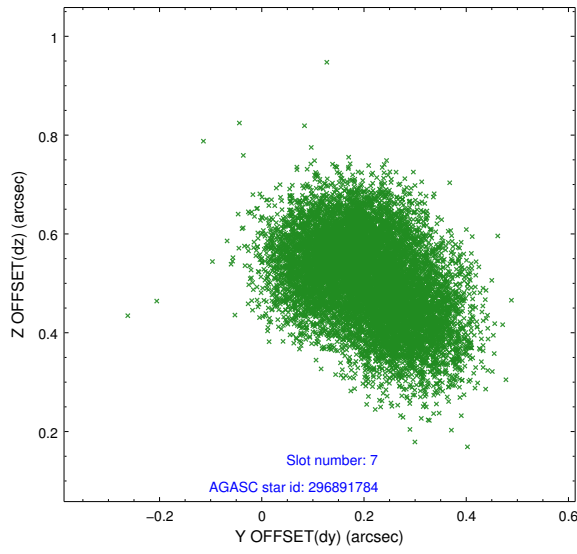
2.4.3 Slot 5



2.4.4 Slot 6

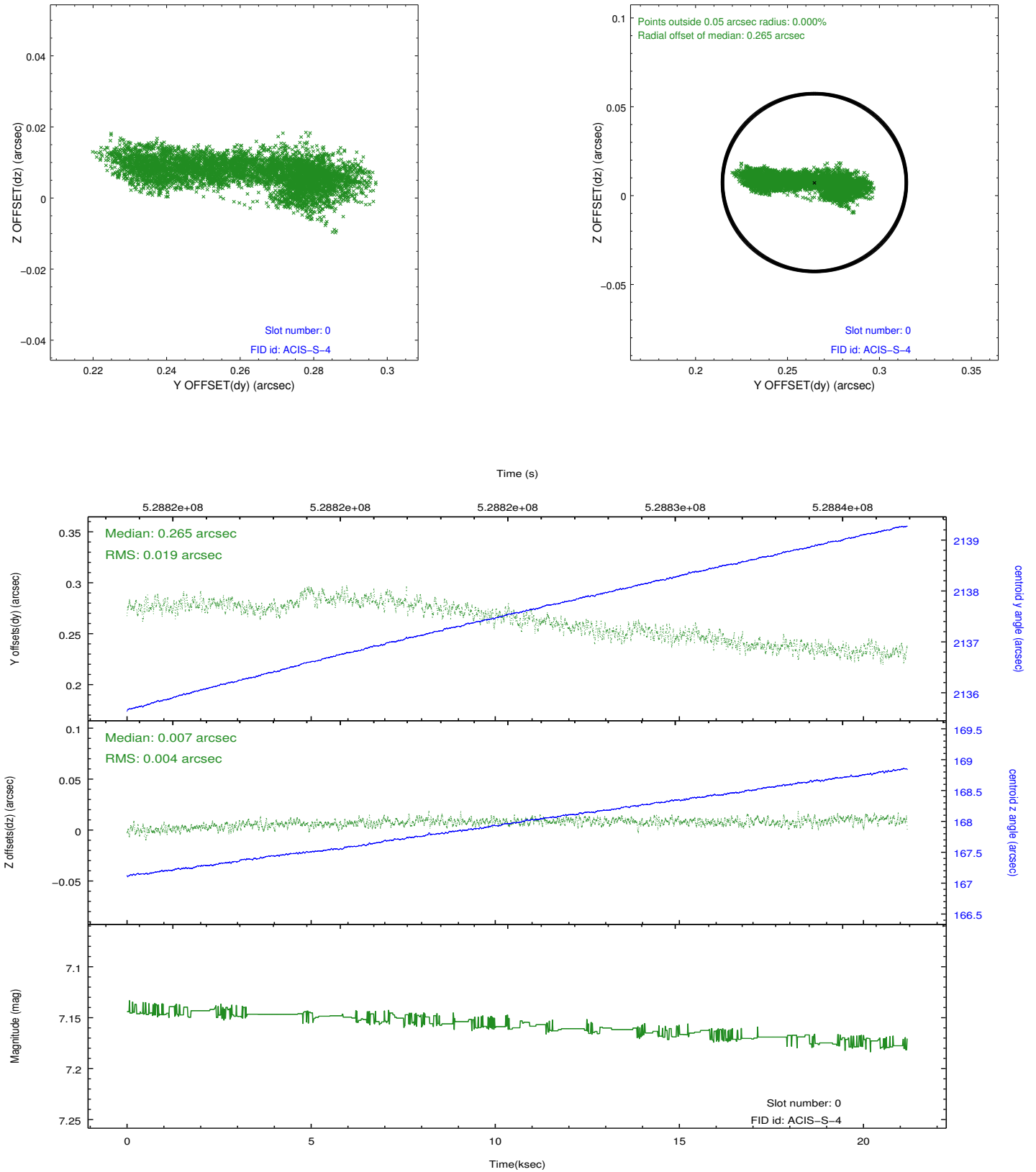


2.4.5 Slot 7

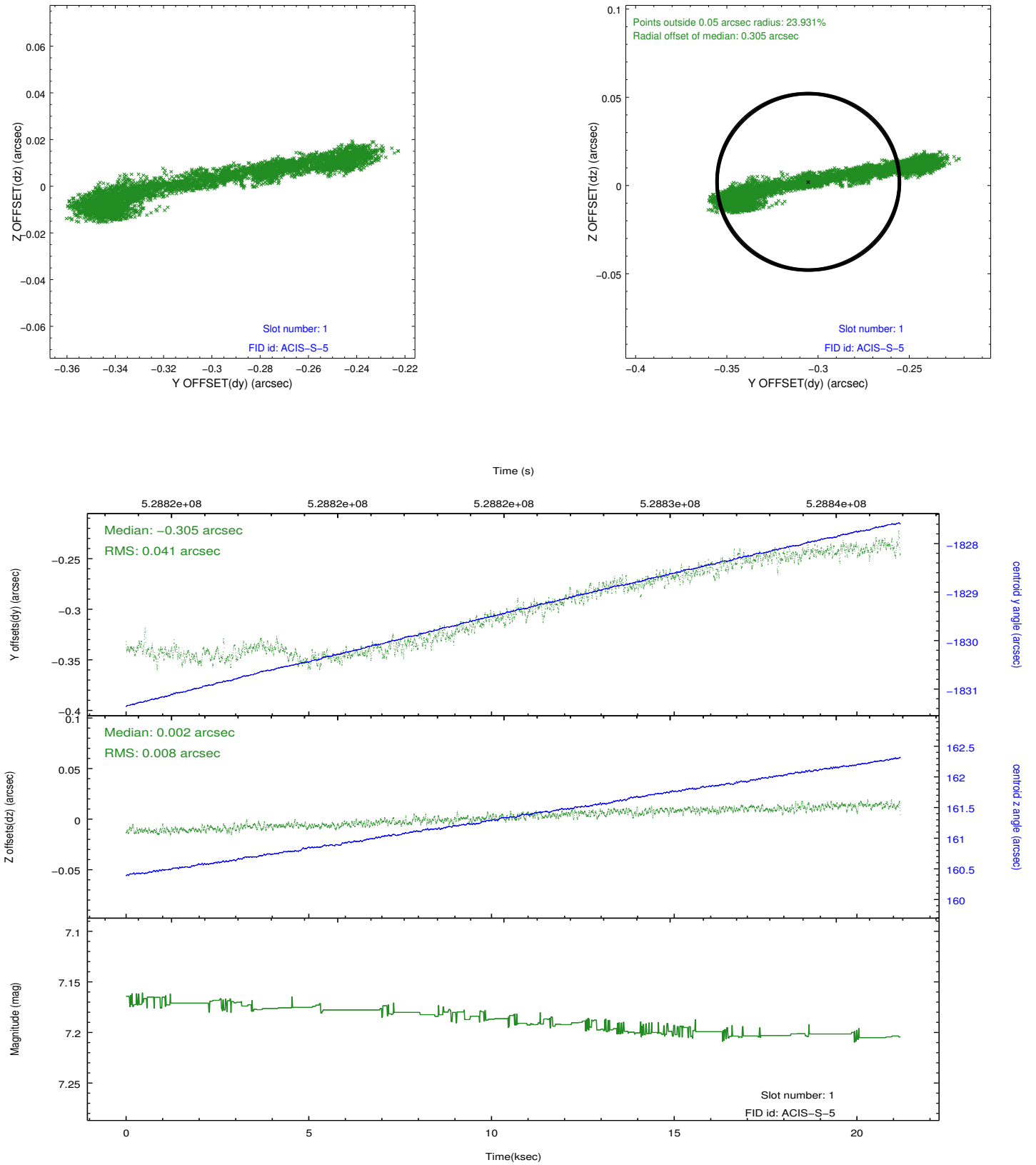


2.5 FID Slots

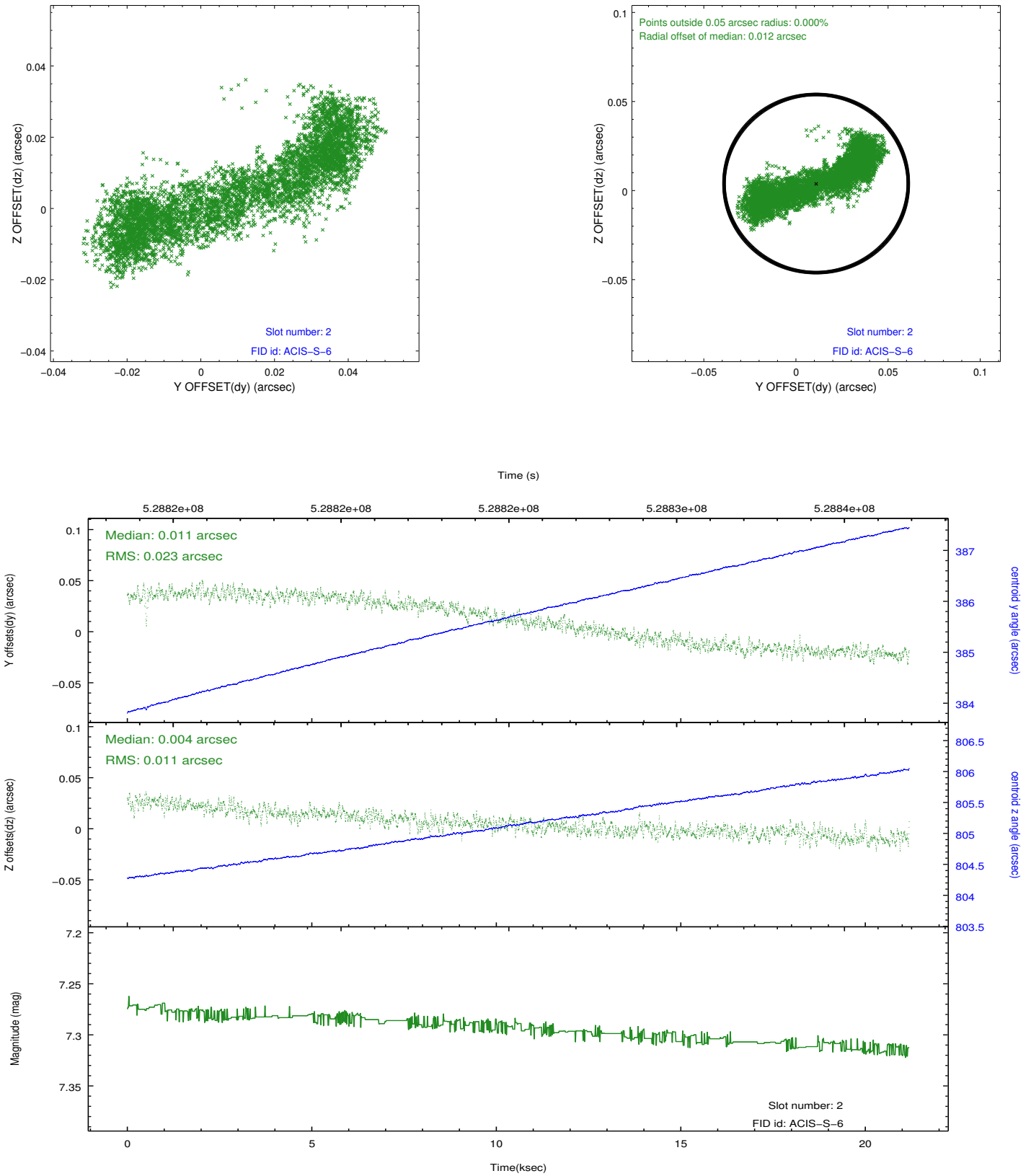
2.5.1 Slot 0



2.5.2 Slot 1



2.5.3 Slot 2



A Summary

A.1 Status

V&V Scientist	Beth Sundheim
V&V Date (YYYY-MM-DD)	2014.10.05
V&V Edition	1
V&V Disposition and Status	OK
V&V Charge Time	21.064500162005

A.2 Comments