

V&V Reference Report

L2 ASCDS Version : 10.2.2

Observation 16070 - L2 Version 3
Chandra X-Ray Center

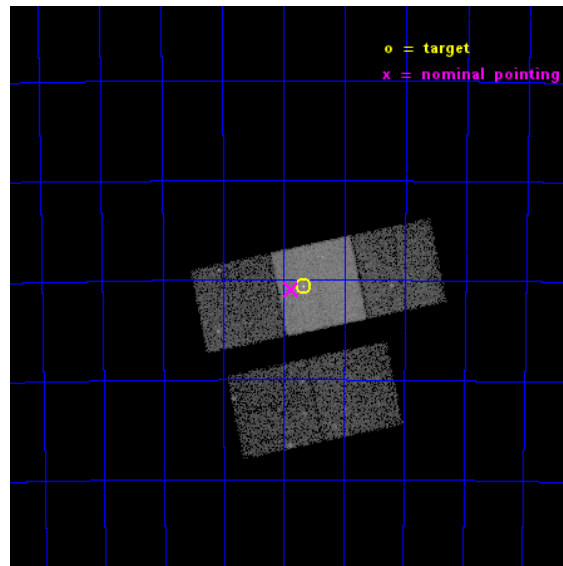
L2 Processing Date : Dec 11 2014

Contents

1	Front	2
2	OBI	3
2.1	OBI	3
2.1.1	Images	3
2.1.2	Bias	3
2.1.3	Parameters	4
2.1.4	Events	4
2.2	Compared Parameters	5
2.3	Aspect	6
2.4	Star Slots	9
2.4.1	Slot 3	9
2.4.2	Slot 4	10
2.4.3	Slot 5	11
2.4.4	Slot 6	12
2.4.5	Slot 7	13
2.5	FID Slots	14
2.5.1	Slot 0	14
2.5.2	Slot 1	15
2.5.3	Slot 2	16
A	Summary	17
A.1	Status	17
A.2	Comments	17

1 Front

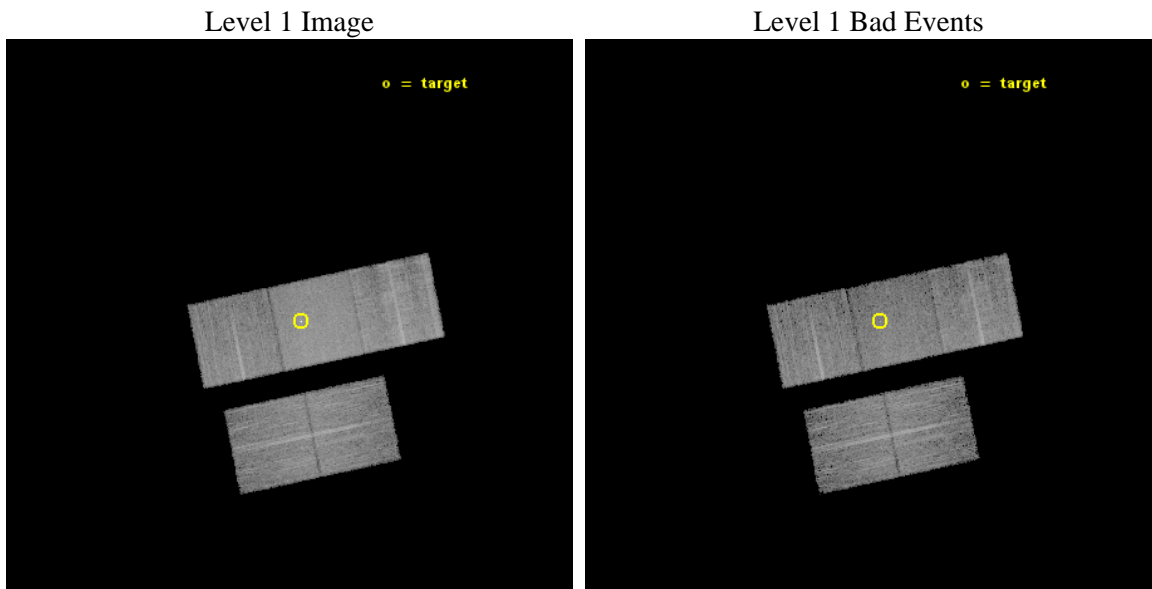
seq_num	702963	Sequence number
obs_id	16070	Observation id
title	Deep Chandra Imaging of Two Youngest Radio Sources	Proposal title
observer	Dr Aneta Siemiginowska	Principal investigator
object	PKS 1718-649	Source name
dtcycle	0	
cycle	P	events from which exps? Prim/Second/Both
ra_targ	260.920833	Observer's specified target RA [deg]
dec_targ	-65.010167	Observer's specified target Dec [deg]
ra_nom	260.96826747942	Nominal RA [deg]
dec_nom	-65.016056532975	Nominal Dec [deg]
roll_nom	348.19962967363	Nominal Roll [deg]
revision	3	Processing version of data
ontime	16154.10012424	Sum of GTIs [s]
livetime	15943.034913641	Livetime [s]
ontime2	16154.10012424	Sum of GTIs [s]
ontime3	16150.959163785	Sum of GTIs [s]
ontime6	16154.10012424	Sum of GTIs [s]
ontime7	16154.10012424	Sum of GTIs [s]
ontime8	16147.818233013	Sum of GTIs [s]
l2events	76058	Number of level 2 events



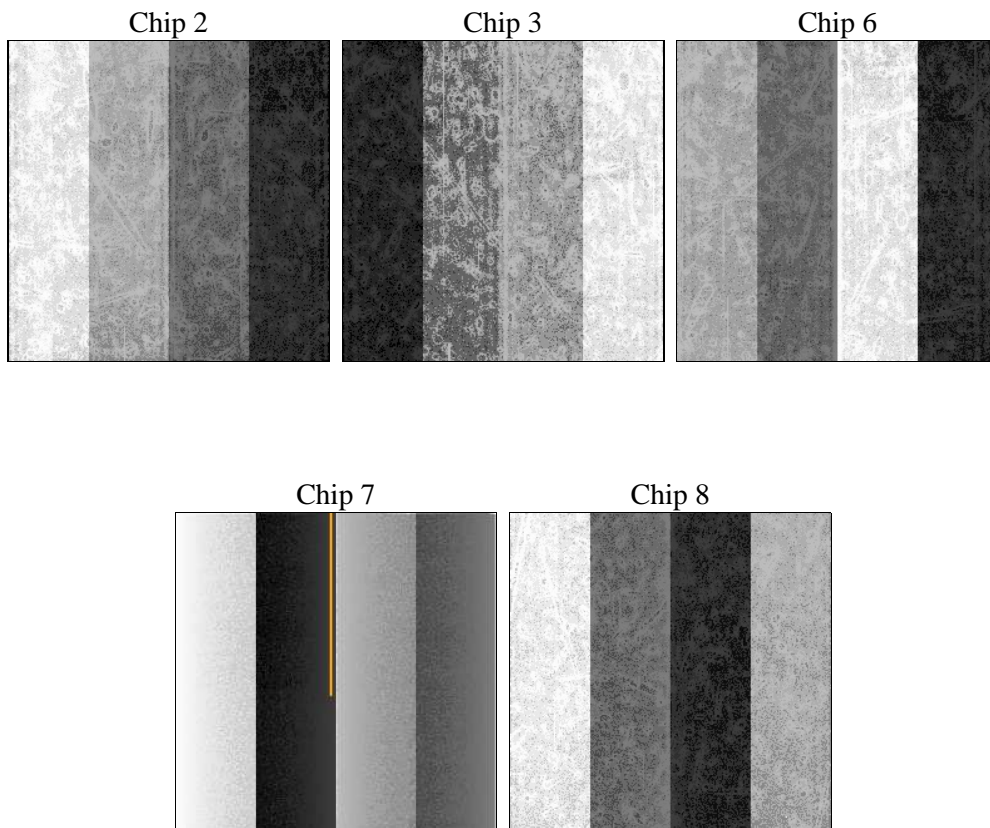
2 OBI

2.1 OBI

2.1.1 Images



2.1.2 Bias



2.1.3 Parameters

obi_num	0	Obi number	sched_exp_time	16084.000000	[s] Scheduled observation exposure time
ascdsver	10.3.1	Processing system revision	ontime	16154.10012424	Sum of GTIs [s]
caldbver	4.6.4	 	ontime2	16154.10012424	Sum of GTIs [s]
date	2014-12-12T01:40:38	Date and time of file creation	ontime3	16150.959163785	Sum of GTIs [s]
revision	3	Processing version of data	ontime6	16154.10012424	Sum of GTIs [s]
			ontime7	16154.10012424	Sum of GTIs [s]
			ontime8	16147.818233013	Sum of GTIs [s]
			l1events	405998	Number of level 1 events

2.1.4 Events

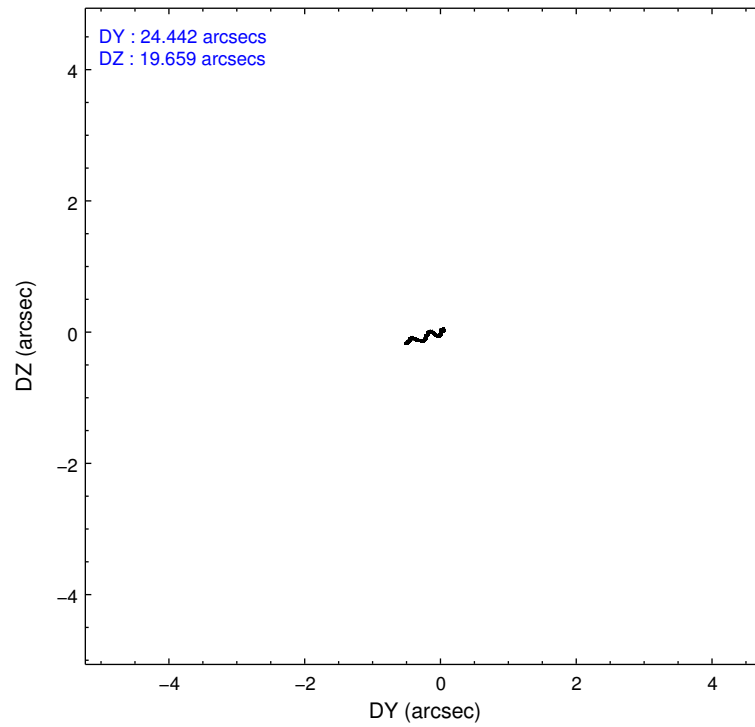
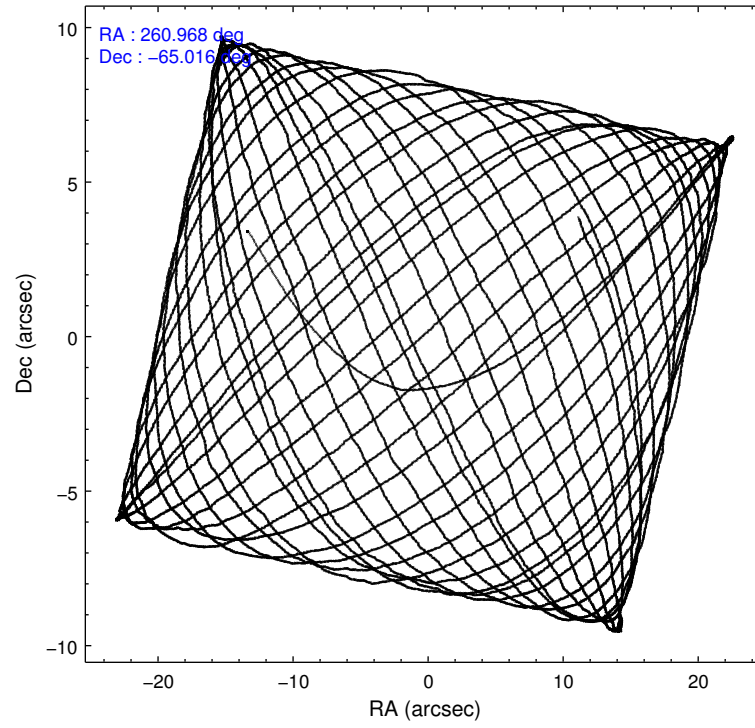
	ccd 2	ccd 3	ccd 6	ccd 7	ccd 8
level 1 events	68394	69367	71679	101864	94694
rejected events	60166	61140	62383	56614	69148
rejected %	87%	88%	87%	55%	73%

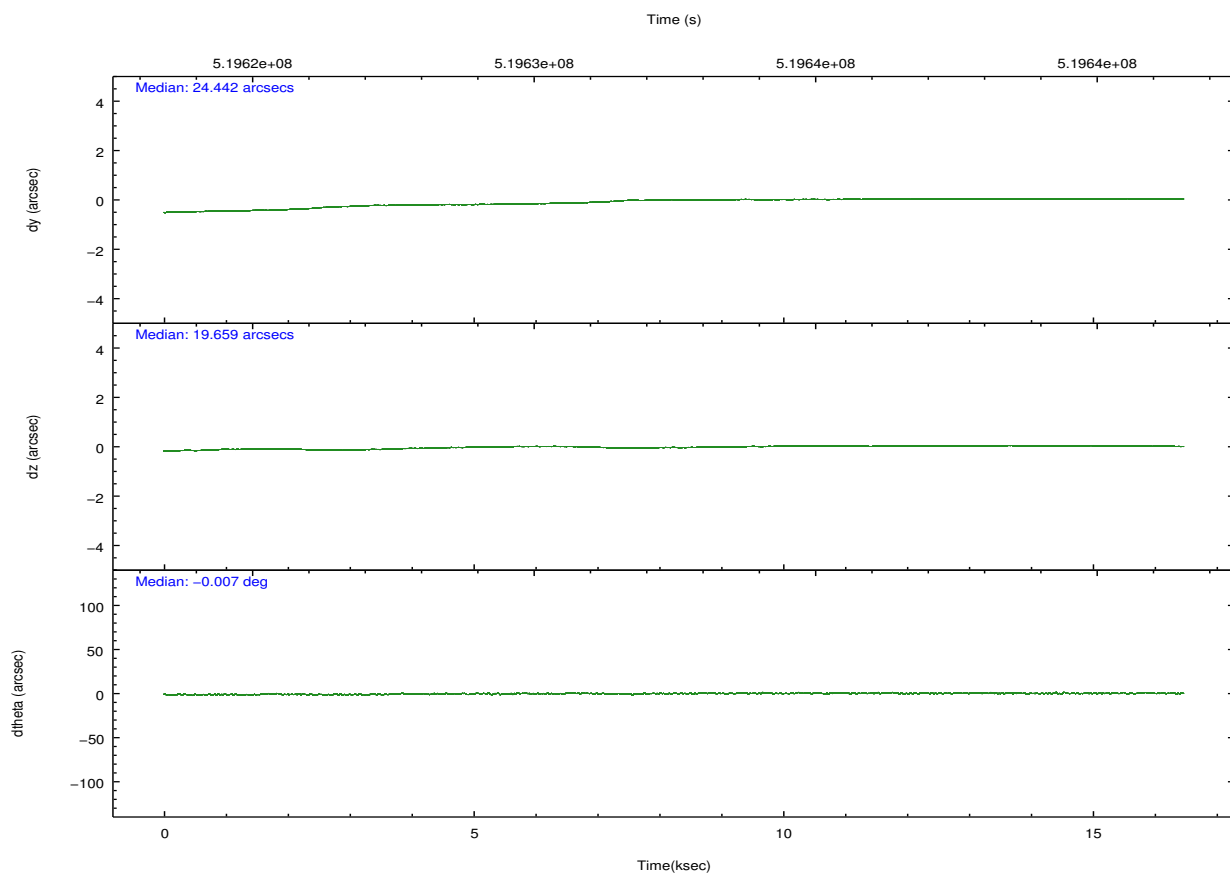
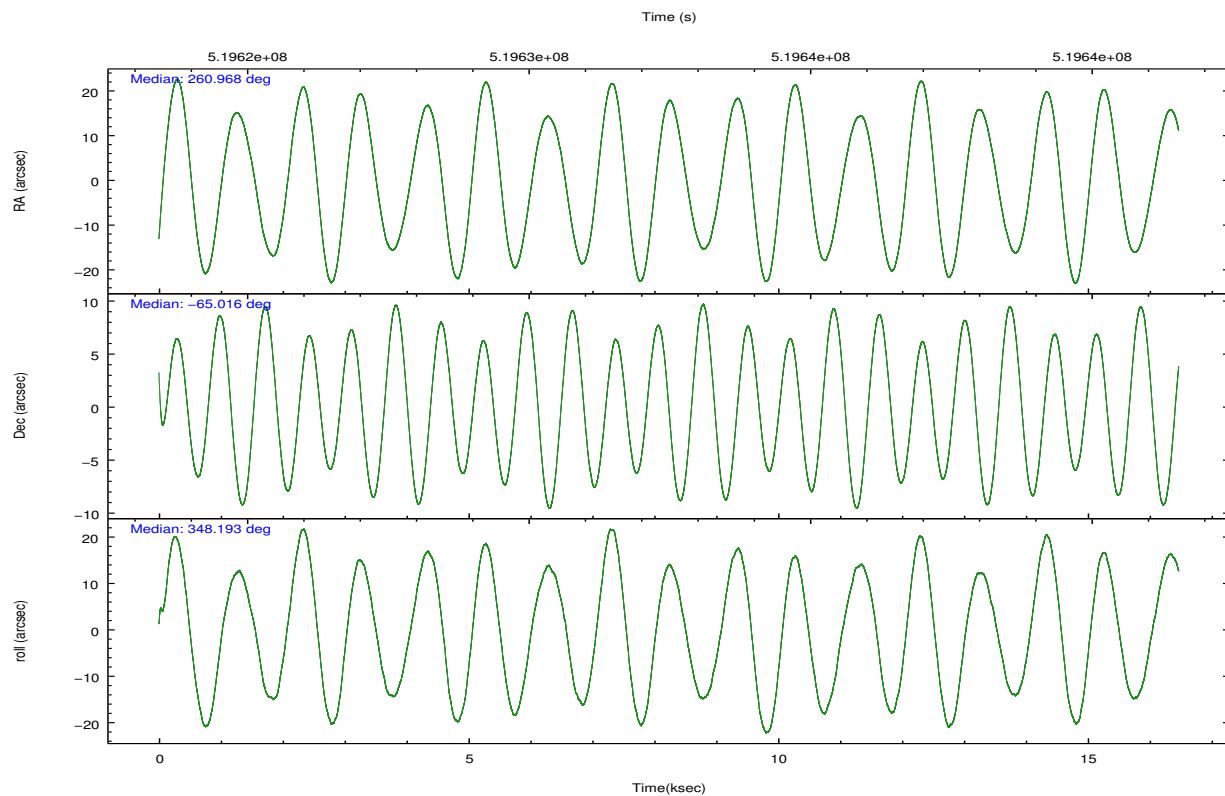
	ccd 2	ccd 3	ccd 6	ccd 7	ccd 8
grade 0 events	3078	3031	3347	4525	7439
	4%	4%	4%	4%	7%
grade 1 events	50	35	46	126	90
	0%	0%	0%	0%	0%
grade 2 events	1981	1801	1996	9344	6201
	2%	2%	2%	9%	6%
grade 3 events	771	830	892	3831	2632
	1%	1%	1%	3%	2%
grade 4 events	817	903	948	4020	2481
	1%	1%	1%	3%	2%
grade 5 events	3199	3810	3909	10312	5735
	4%	5%	5%	10%	6%
grade 6 events	1586	1666	2115	23548	6801
	2%	2%	2%	23%	7%
grade 7 events	56912	57291	58426	46158	63315
	83%	82%	81%	45%	66%

2.2 Compared Parameters

Parameter	Planned	Actual	Parameter	Planned	Actual
Instrument	ACIS	ACIS	Obspar format version number	7	7
Detector	ACIS-23678	ACIS-23678	Obspar file type	PREDICTED	ACTUAL
Grating	NONE	NONE	Obspar update status	NONE	UPDATED
Data mode	VFAINT	VFAINT	CCD I0 on	N	N
Observation mode	POINTING	POINTING	CCD I1 on	N	N
[deg] Pointing RA	260.906933	260.9682674794213	CCD I2 on	O1	Y
[deg] Pointing Dec	-65.024930	-65.01605653297541	CCD I3 on	O2	Y
[deg] Pointing Roll	347.987402	348.1996296736272	CCD S0 on	N	N
[mm] SIM focus pos	-0.684267	-0.6828225247311905	CCD S1 on	N	N
[mm] SIM defocus	0	0.001444936568705701	CCD S2 on	Y	Y
[mm] SIM translation stage pos	-190.132523	-190.1400660498719	CCD S3 on	Y	Y
[mm] SIM translation stage offset	0	0.00754346686406393	CCD S4 on	Y	Y
[s] Observation start time (MET)	519624628.184000	519623590.81694	CCD S5 on	N	N
Observation start date	2014-06-20T04:09:21	2014-06-20T03:53:10	Number of optional ACIS chips dropped	0	0
[s] Observation end time (MET)	519640712.184000	519641020.4304	On-chip summing requested	N	N
Observation end date	2014-06-20T08:37:25	2014-06-20T08:43:40	Subarray requested	NONE	NONE
Read mode	TIMED	TIMED	Alternating exposures requested	N	N
			[s] Primary exposure time	0.000000	3.1

2.3 Aspect



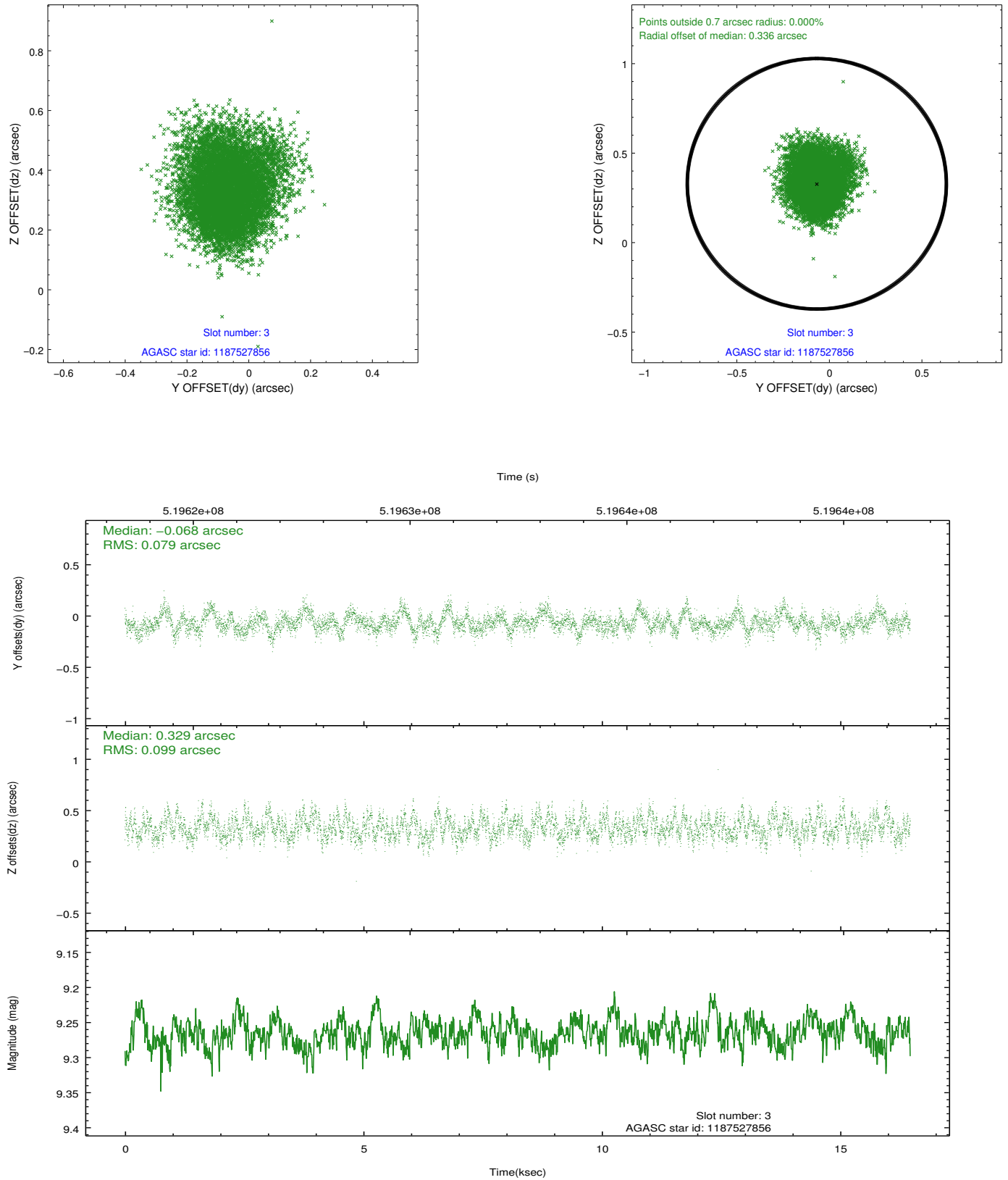


Slot Statistics

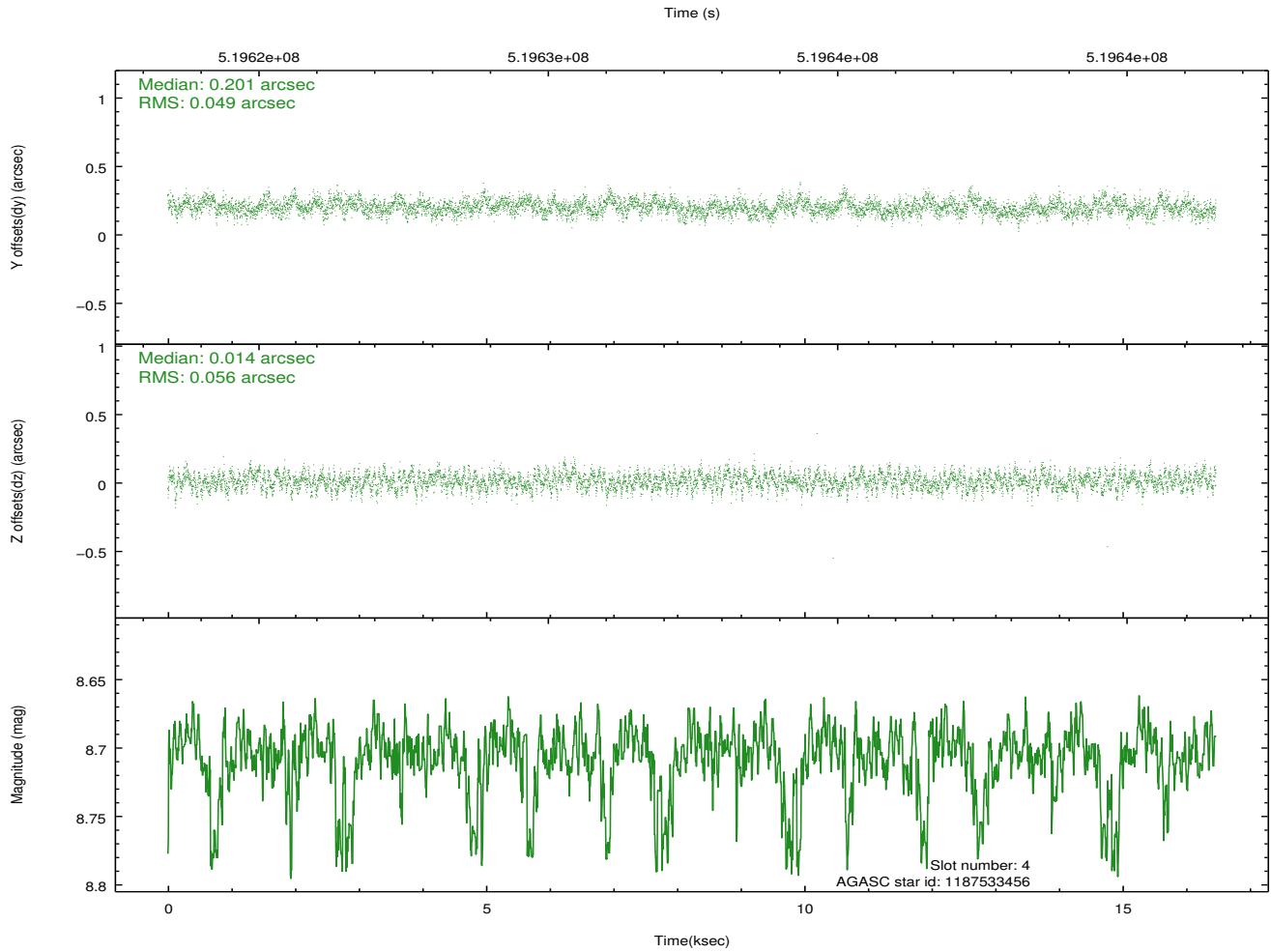
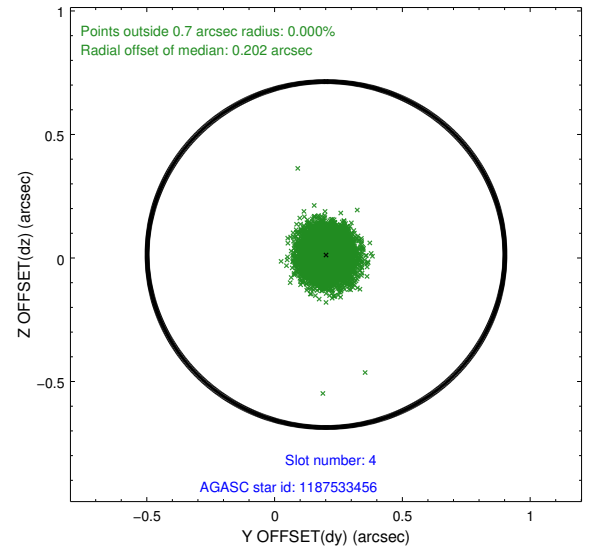
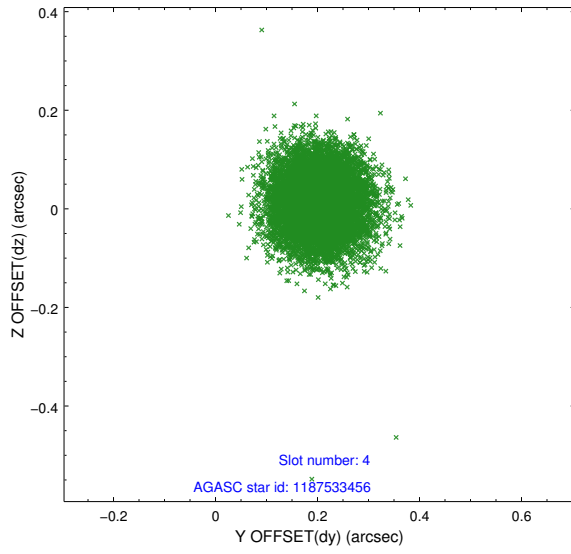
slot	status	used	id	mag	n_pts	med_dy	med_dz	dr1	dr2	ra	dec	mean_y	mean_z
0	FID		ACIS-S-1	7.03	4016	0.049	-0.003	0.008	0.014	0.000000	0.000000	918.56	-1736.75
1	FID		ACIS-S-5	7.06	4017	-0.207	0.009	0.007	0.013	0.000000	0.000000	-1830.58	160.49
2	FID		ACIS-S-6	7.17	4017	0.136	0.006	0.009	0.016	0.000000	0.000000	383.87	804.78
3	GUIDE	used	1187527856	9.27	8028	-0.068	0.329	0.135	0.219	260.889266	-65.511869	339.49	-1719.53
4	GUIDE	used	1187533456	8.70	8032	0.201	0.014	0.079	0.123	260.686036	-64.949110	-385.55	195.48
5	GUIDE	used	1187655104	6.86	8034	-0.278	-0.458	0.077	0.118	262.019924	-64.951088	1606.89	598.39
6	GUIDE	used	1187669496	9.21	8023	-0.067	-0.038	0.149	0.242	261.750446	-64.729734	1048.72	1300.94
7	GUIDE	used	1188064872	7.14	8033	0.205	0.149	0.098	0.158	260.990080	-65.702137	628.81	-2358.45

2.4 Star Slots

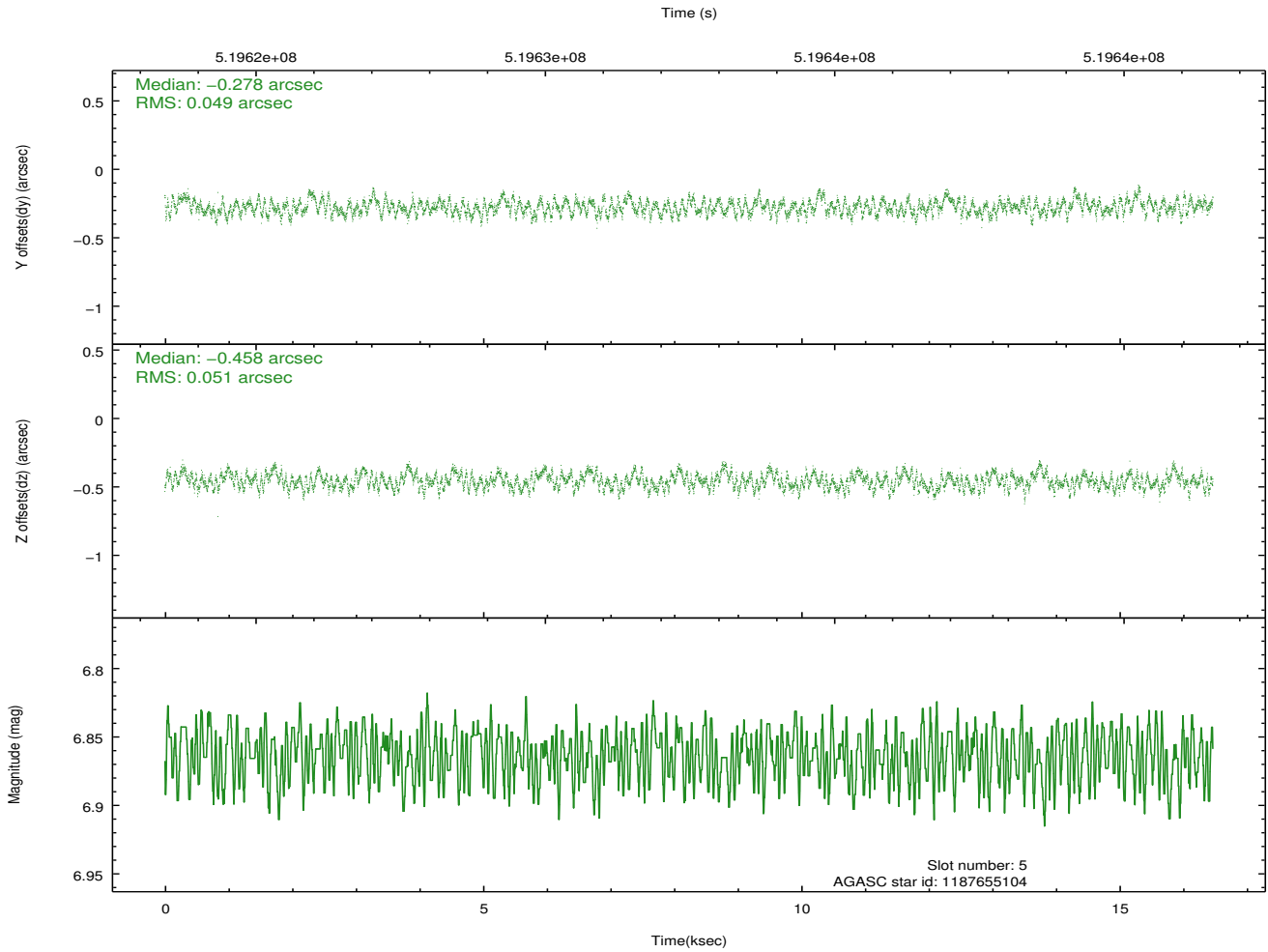
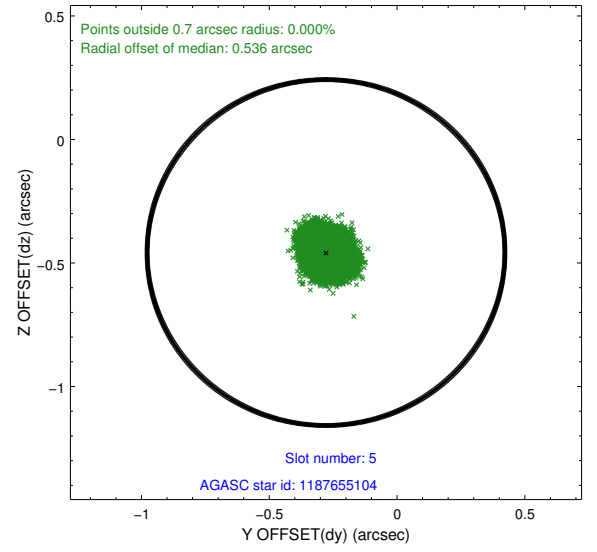
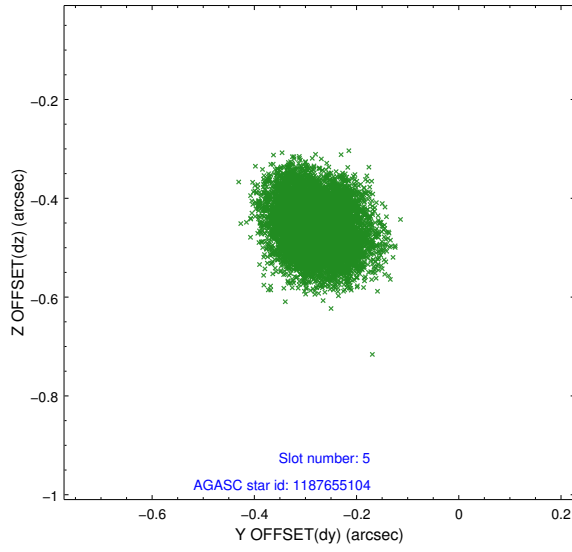
2.4.1 Slot 3



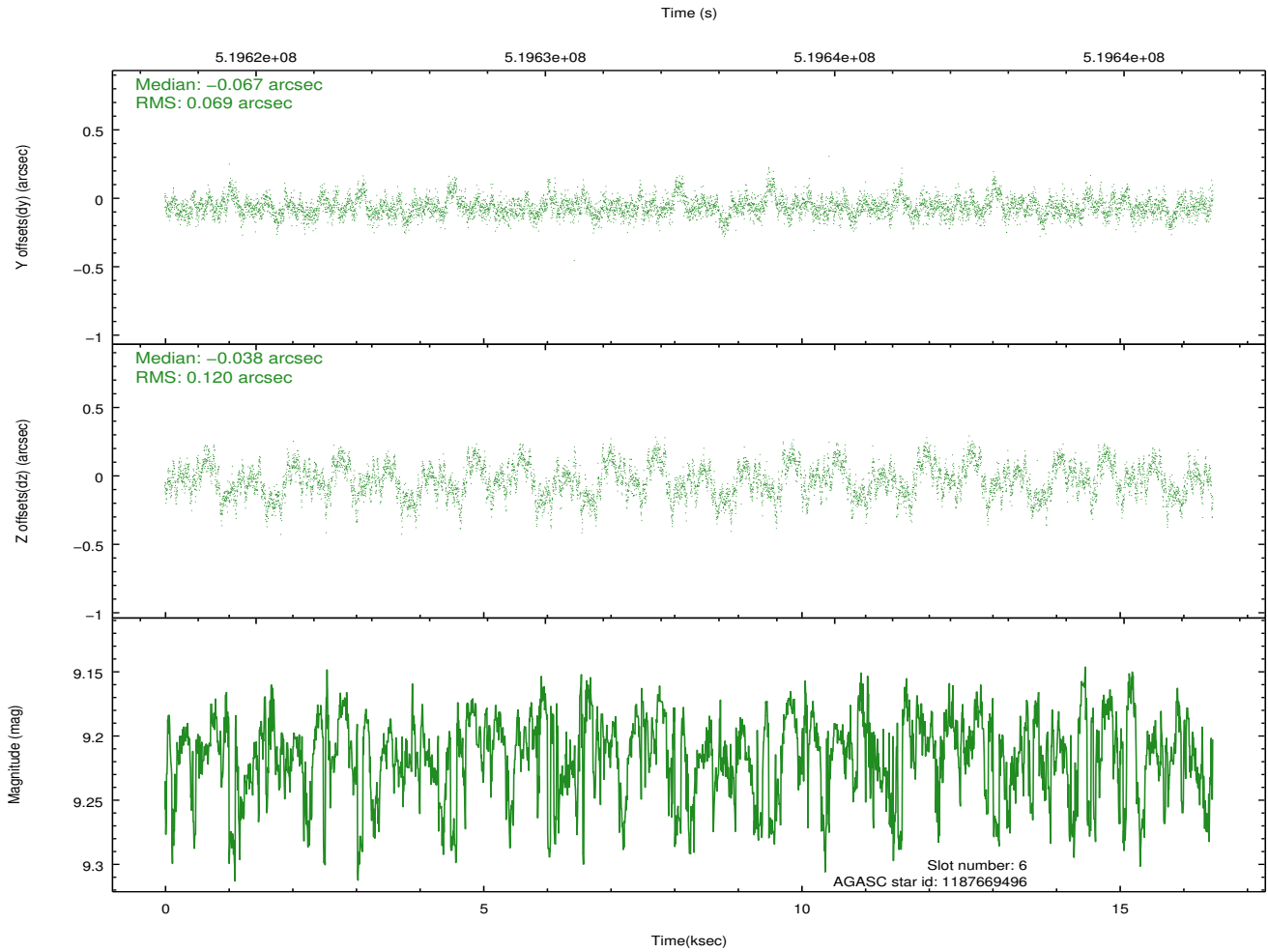
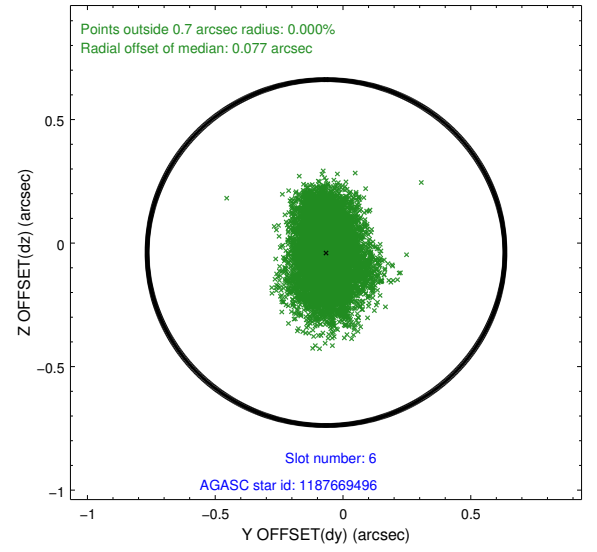
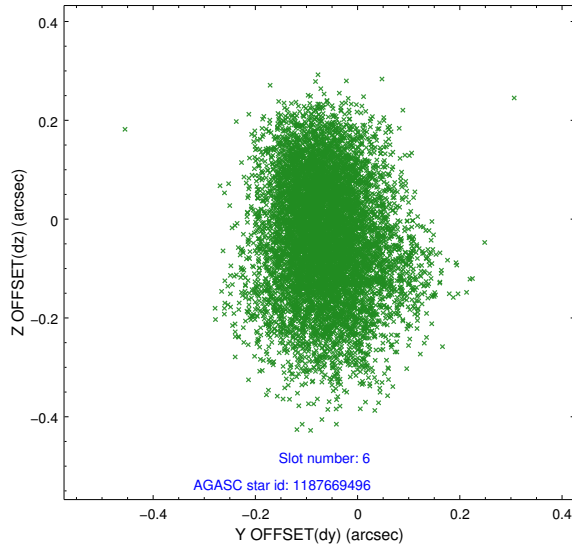
2.4.2 Slot 4



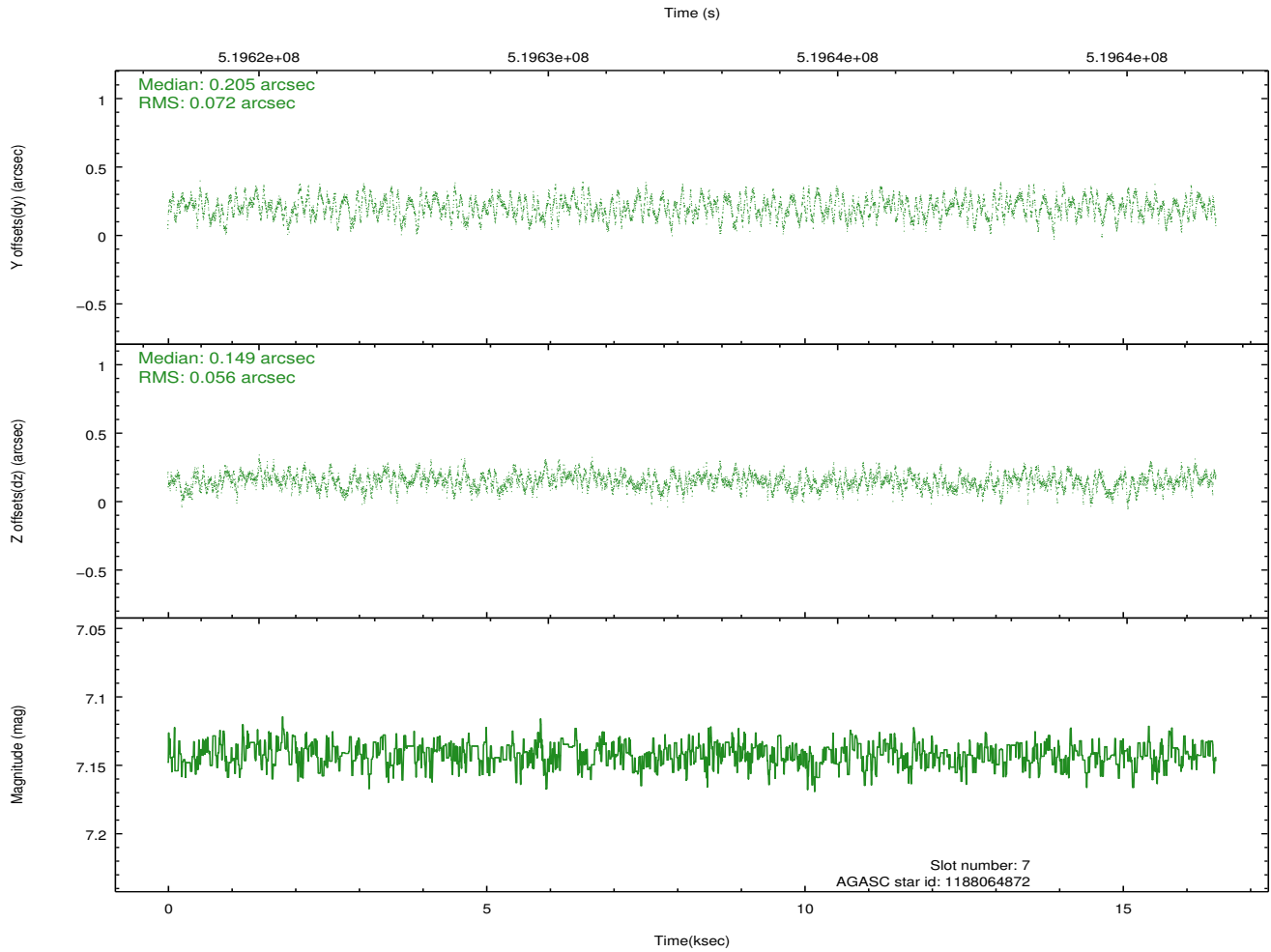
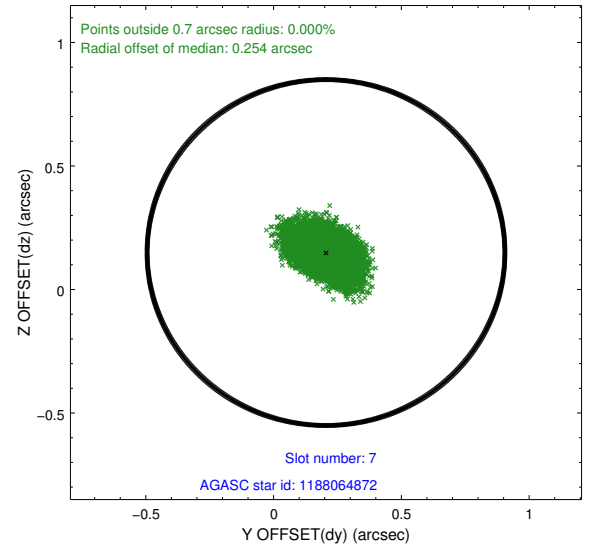
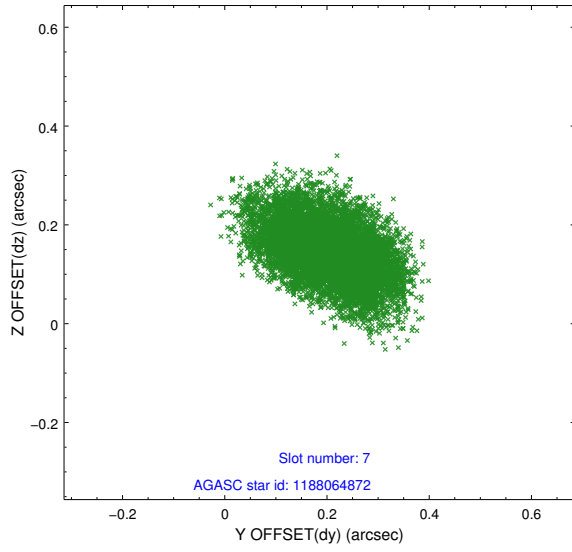
2.4.3 Slot 5



2.4.4 Slot 6

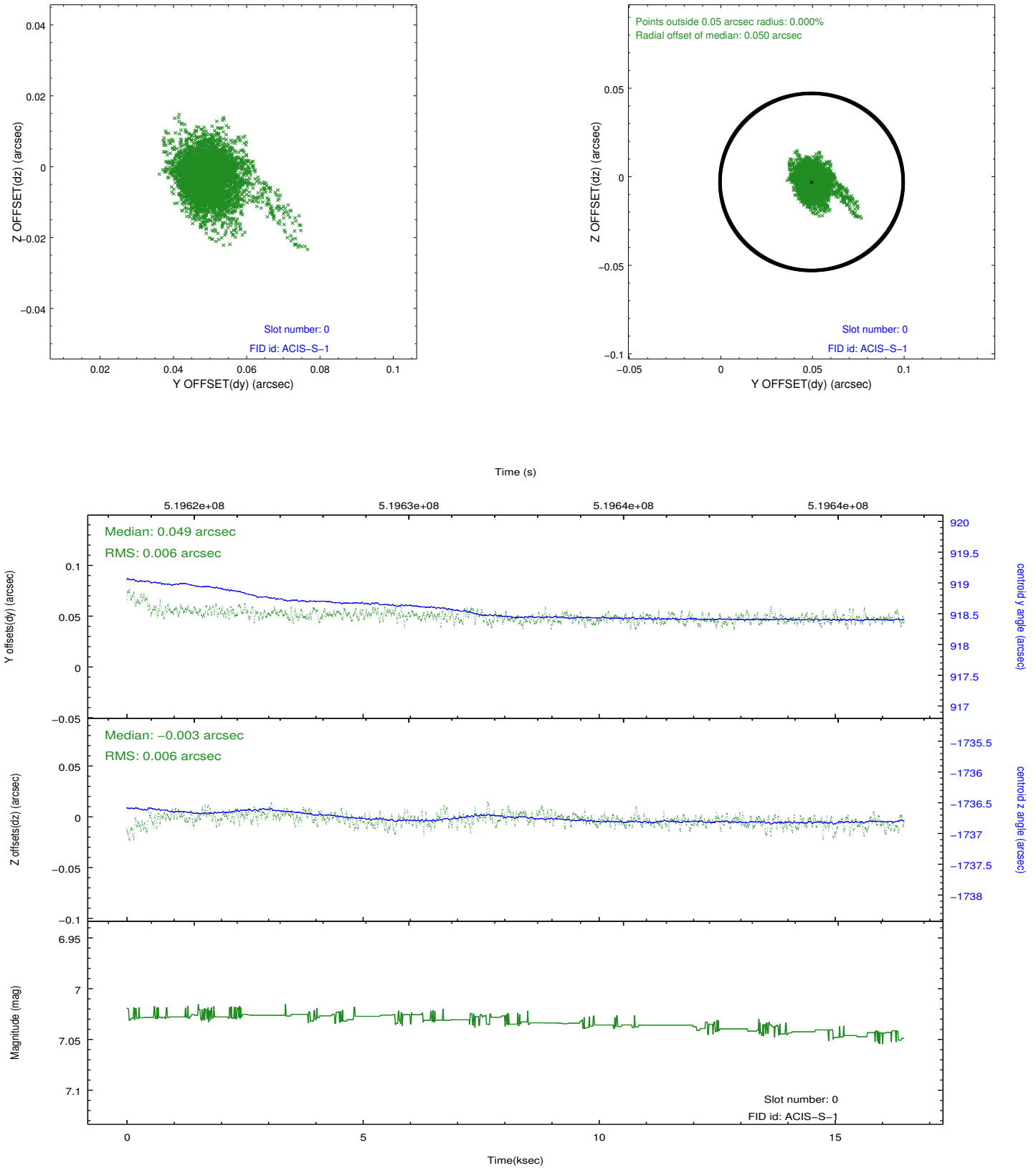


2.4.5 Slot 7

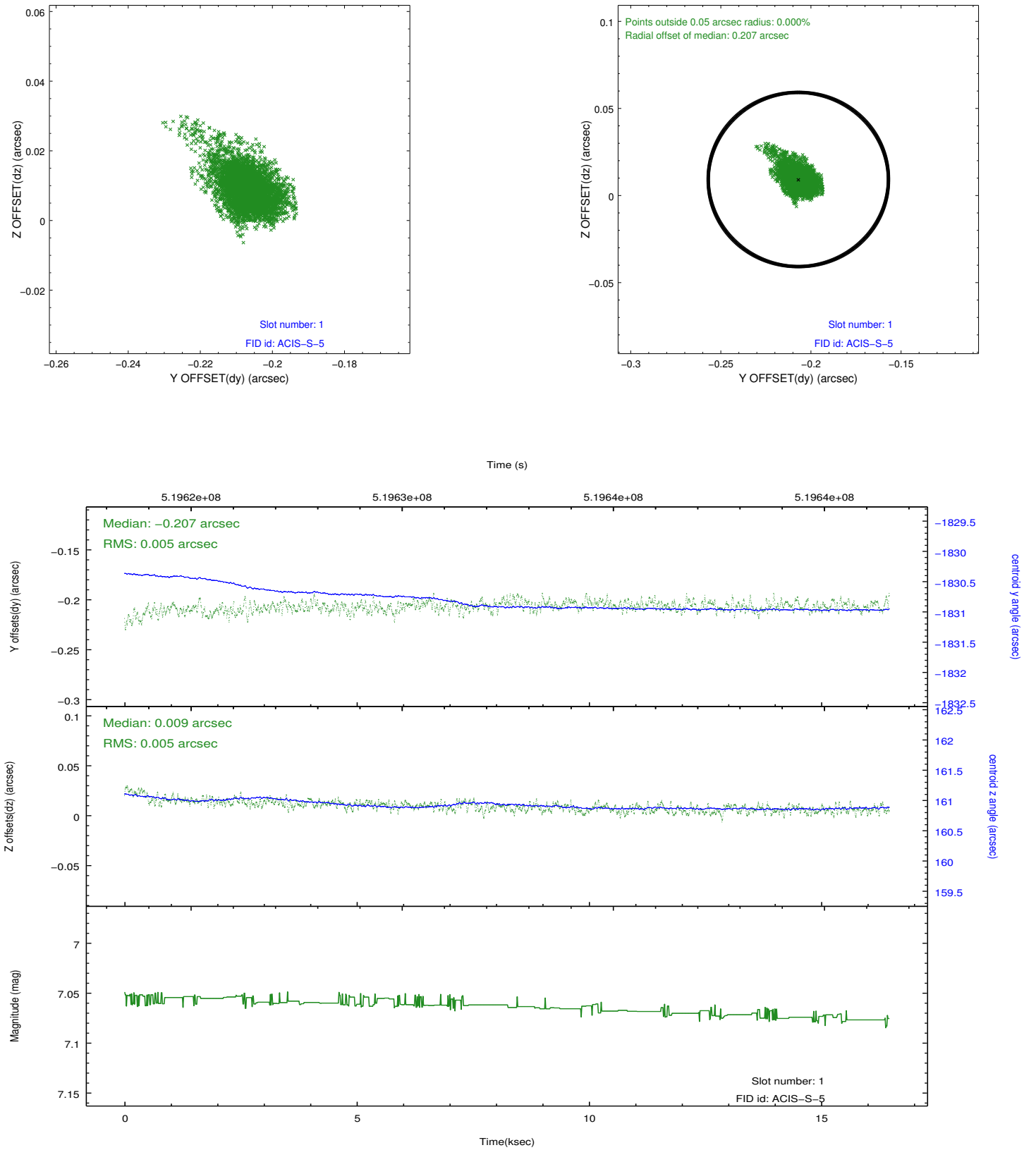


2.5 FID Slots

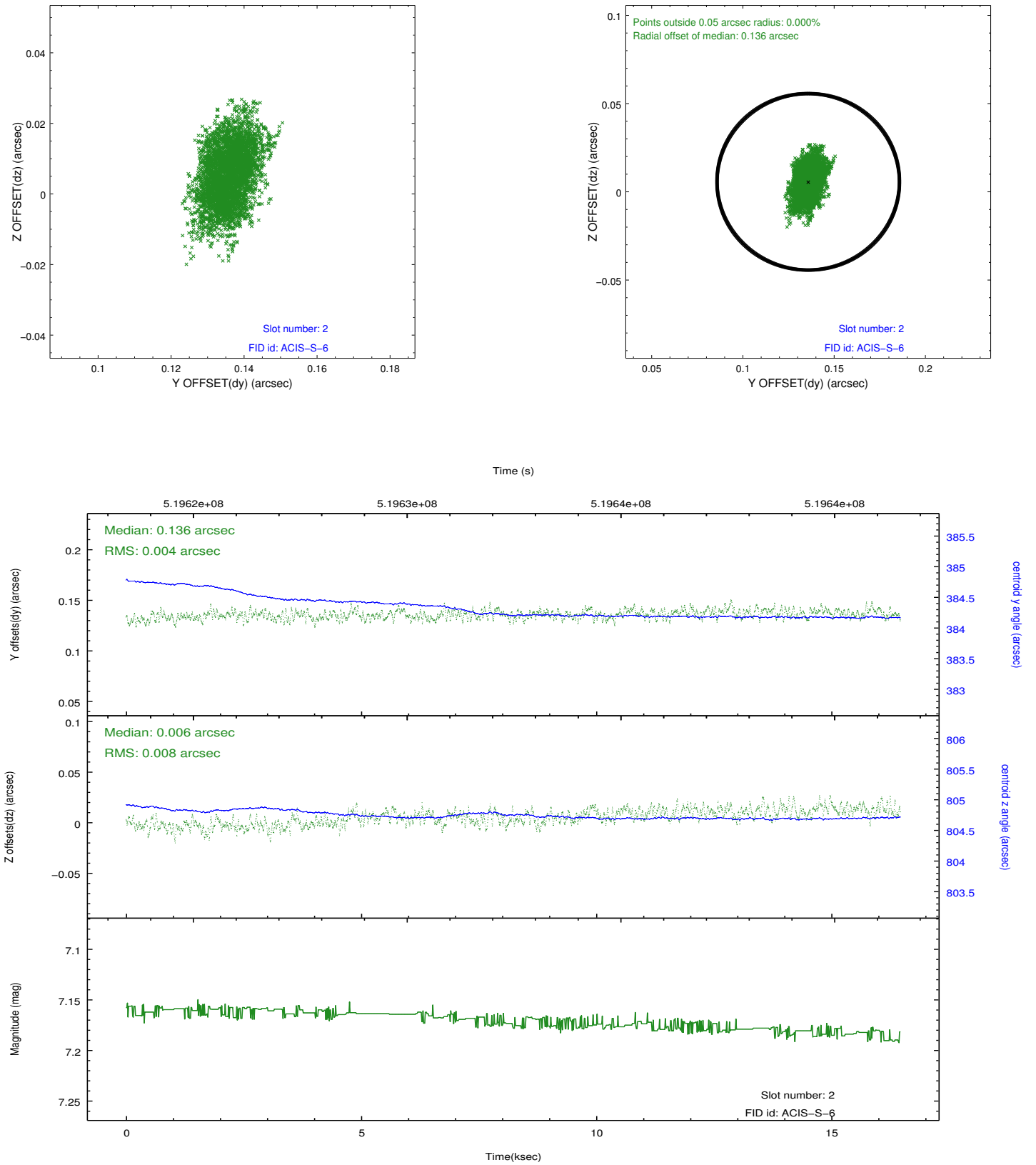
2.5.1 Slot 0



2.5.2 Slot 1



2.5.3 Slot 2



A Summary

A.1 Status

V&V Scientist	Beth Sundheim
V&V Date (YYYY-MM-DD)	2014.12.19
V&V Edition	1
V&V Disposition and Status	OK
V&V Charge Time	16.15410012424

A.2 Comments

These data have been reprocessed with new aspect alignment calibration files that correct small mean offsets (up to 0.4 arcsecs) and improve overall astrometric accuracy. The new calibration was determined using data from the time period being reprocessed and was performed using cross-correlation of X-ray sources with radio and optical counterparts.