

V&V Reference Report

L2 ASCDS Version : 10.2.2

Observation 16066 - L2 Version 2
Chandra X-Ray Center

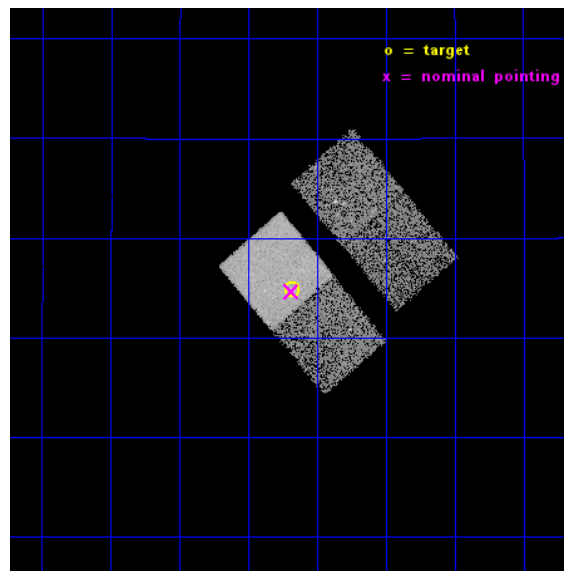
L2 Processing Date : Dec 11 2014

Contents

1	Front	2
2	OBI	3
2.1	OBI	3
2.1.1	Images	3
2.1.2	Bias	3
2.1.3	Parameters	4
2.1.4	Events	4
2.2	Compared Parameters	5
2.3	Aspect	6
2.4	Star Slots	9
2.4.1	Slot 3	9
2.4.2	Slot 4	10
2.4.3	Slot 5	11
2.4.4	Slot 6	12
2.4.5	Slot 7	13
2.5	FID Slots	14
2.5.1	Slot 0	14
2.5.2	Slot 1	15
2.5.3	Slot 2	16
A	Summary	17
A.1	Status	17
A.2	Comments	17

1 Front

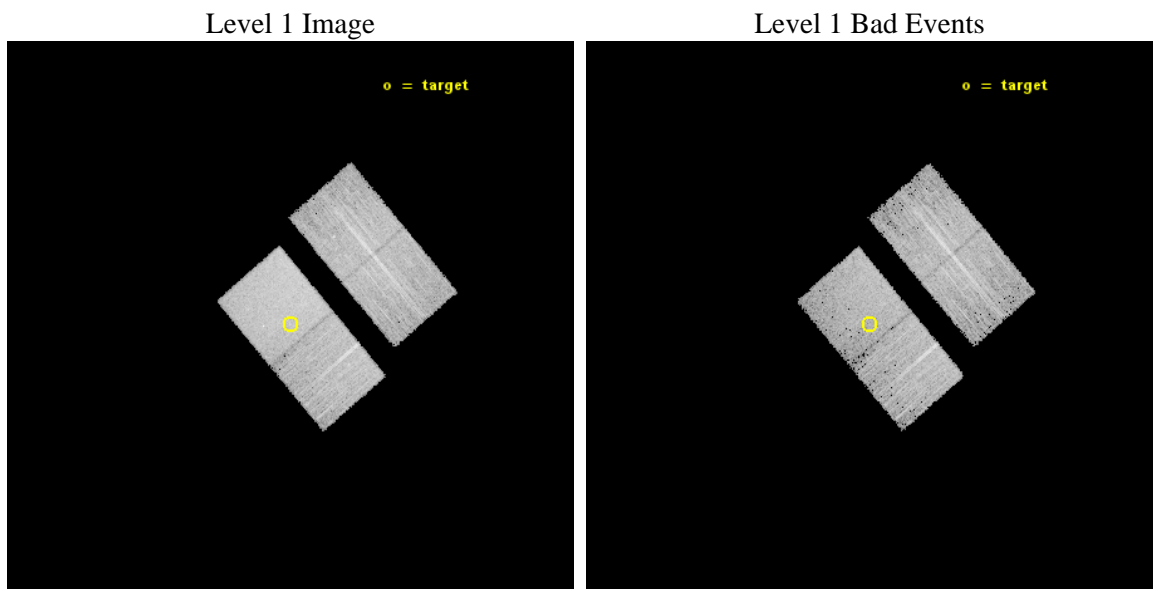
seq_num	702960	Sequence number
obs_id	16066	Observation id
title	Continuing the Chandra 3CR Snapshot Survey: 23 Radio Sources with 0.5	Proposal title
observer	Dr. Francesco Massaro	Principal investigator
object	3C293.1	Source name
dtcycle	0	
cycle	P	events from which exps? Prim/Second/Both
ra_targ	208.670833	Observer's specified target RA [deg]
dec_targ	16.24725	Observer's specified target Dec [deg]
ra_nom	208.67176404652	Nominal RA [deg]
dec_nom	16.244294069179	Nominal Dec [deg]
roll_nom	229.58148664359	Nominal Roll [deg]
revision	2	Processing version of data
ontime	12077.600092888	Sum of GTIs [s]
livetime	11919.797356274	Livetime [s]
ontime2	12074.45904249	Sum of GTIs [s]
ontime3	12074.459042668	Sum of GTIs [s]
ontime6	12077.600092888	Sum of GTIs [s]
ontime7	12077.600092888	Sum of GTIs [s]
l2events	52419	Number of level 2 events



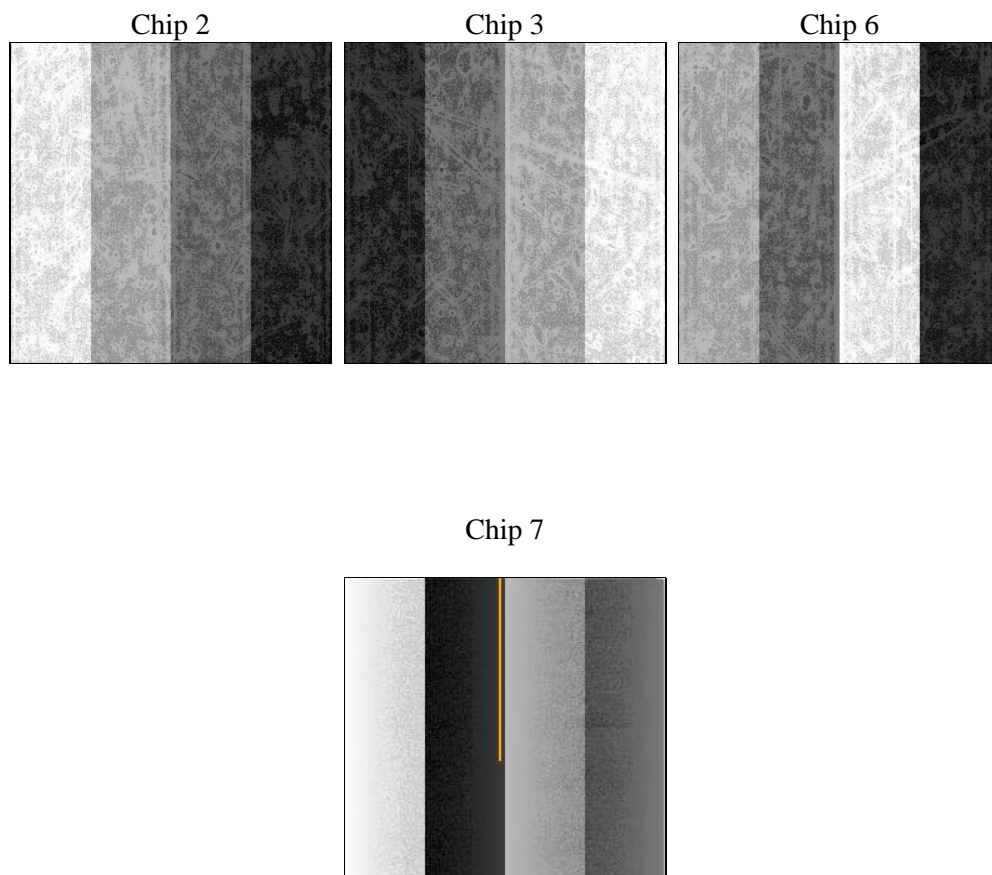
2 OBI

2.1 OBI

2.1.1 Images



2.1.2 Bias



2.1.3 Parameters

obi_num	0	Obi number	sched_exp_time	12000.000000	[s] Scheduled observation exposure time
ascdsver	10.3.1	Processing system revision	ontime	12077.600092888	Sum of GTIs [s]
caldsver	4.6.4	 	ontime2	12074.45904249	Sum of GTIs [s]
date	2014-12-12T01:23:50	Date and time of file creation	ontime3	12074.459042668	Sum of GTIs [s]
revision	2	Processing version of data	ontime6	12077.600092888	Sum of GTIs [s]
			ontime7	12077.600092888	Sum of GTIs [s]
			l1events	258610	Number of level 1 events

2.1.4 Events

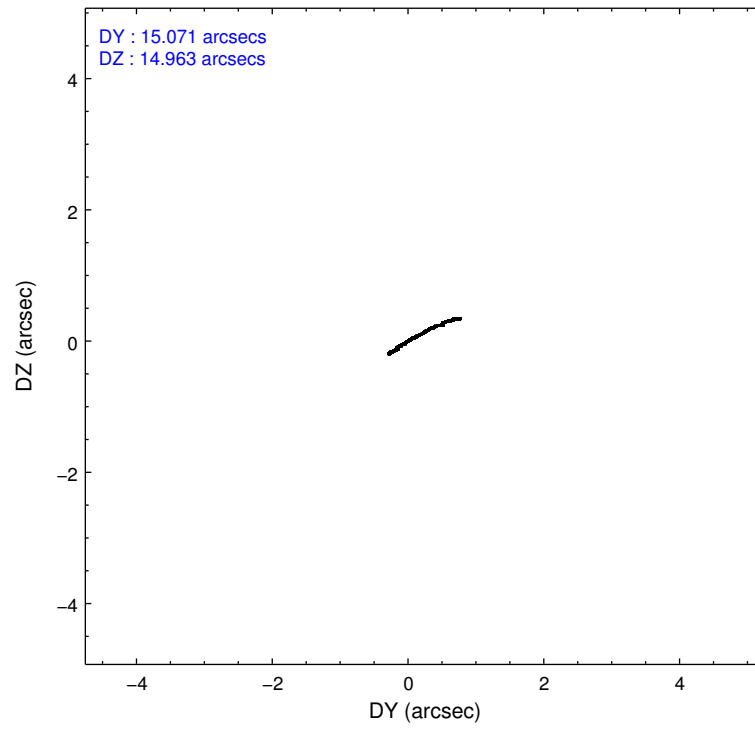
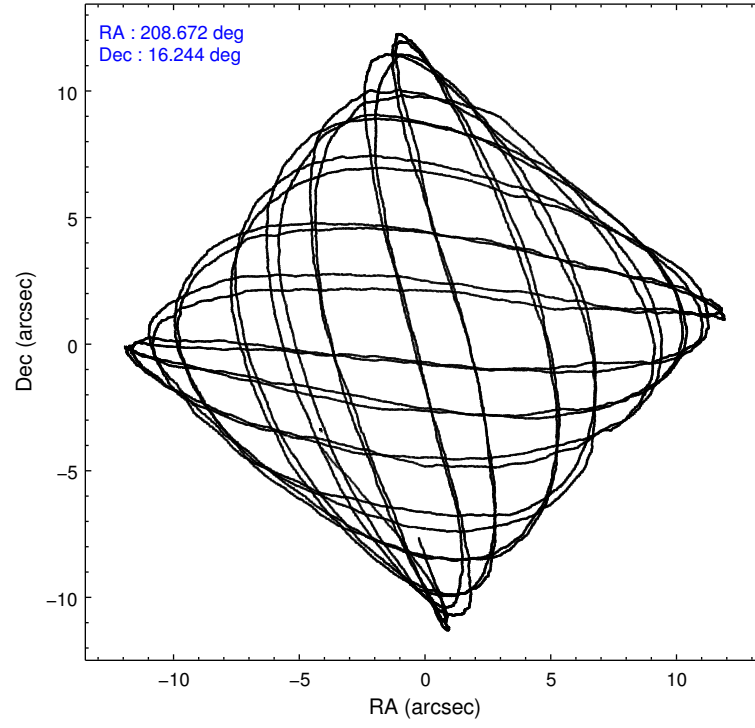
	ccd 2	ccd 3	ccd 6	ccd 7
level 1 events	57343	58898	60807	81562
rejected events	50935	51987	53464	46325
rejected %	88%	88%	87%	56%

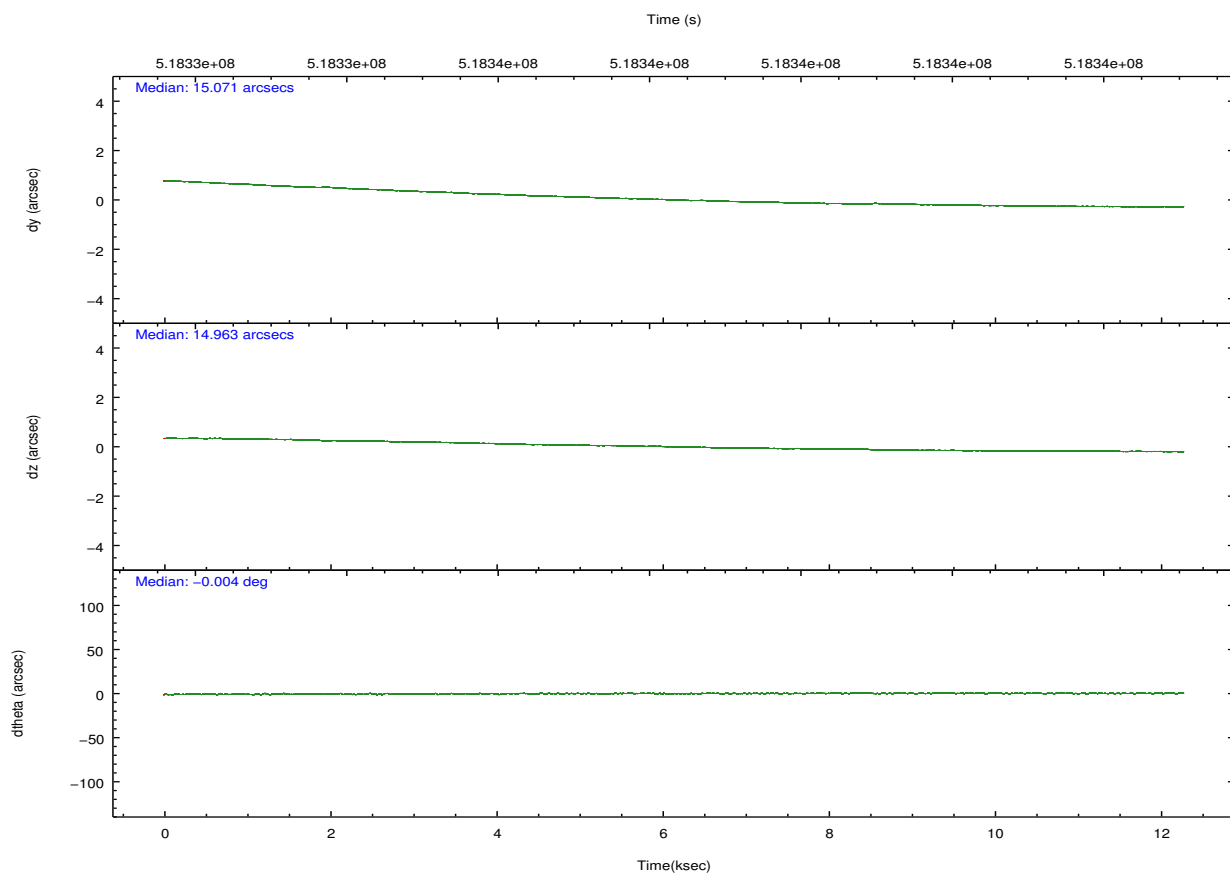
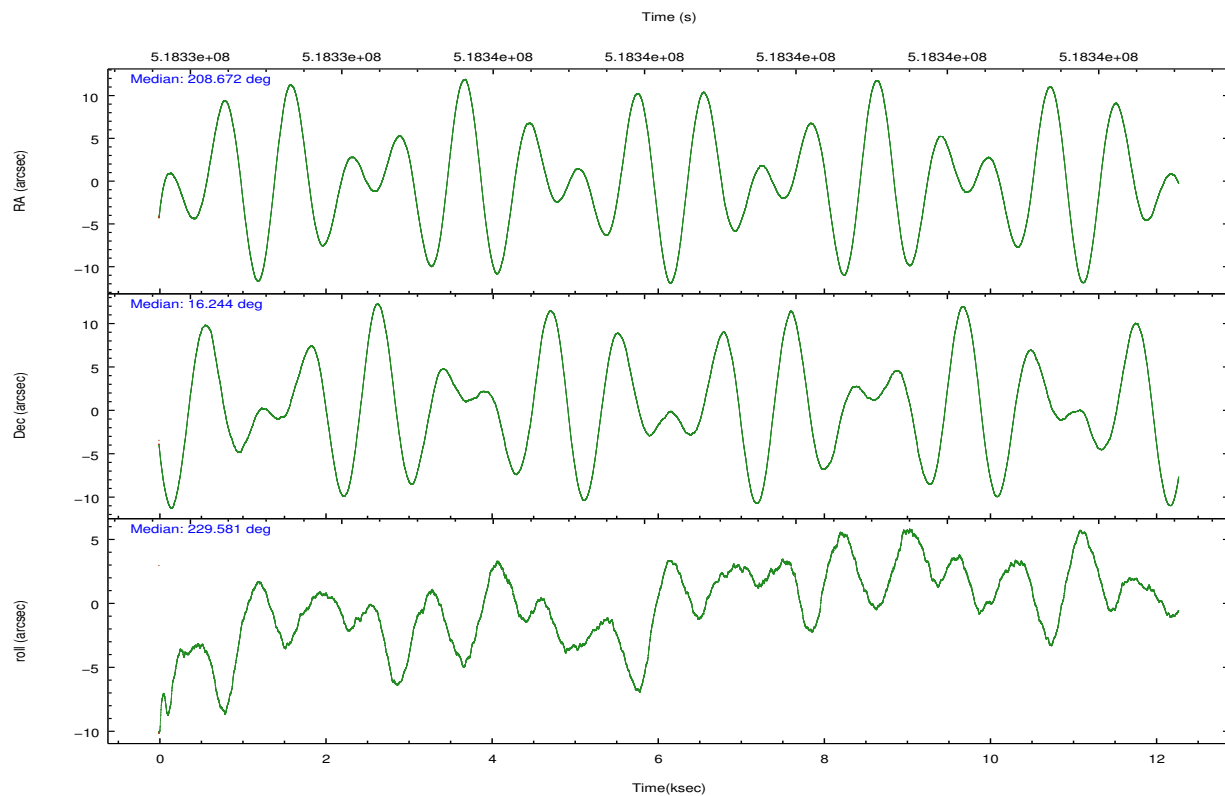
	ccd 2	ccd 3	ccd 6	ccd 7
grade 0 events	2259	2592	2385	3066
	3%	4%	3%	3%
grade 1 events	27	43	39	88
	0%	0%	0%	0%
grade 2 events	1470	1445	1714	7437
	2%	2%	2%	9%
grade 3 events	677	700	699	2731
	1%	1%	1%	3%
grade 4 events	700	679	712	2791
	1%	1%	1%	3%
grade 5 events	2356	3059	3056	7882
	4%	5%	5%	9%
grade 6 events	1307	1499	1837	19235
	2%	2%	3%	23%
grade 7 events	48547	48881	50365	38332
	84%	82%	82%	46%

2.2 Compared Parameters

Parameter	Planned	Actual	Parameter	Planned	Actual
Instrument	ACIS	ACIS	Obspar format version number	7	7
Detector	ACIS-2367	ACIS-2367	Obspar file type	PREDICTED	ACTUAL
Grating	NONE	NONE	Obspar update status	NONE	UPDATED
Data mode	FAINT	FAINT	CCD I0 on	N	N
Observation mode	POINTING	POINTING	CCD I1 on	N	N
[deg] Pointing RA	208.676527	208.6717640465158	CCD I2 on	O1	Y
[deg] Pointing Dec	16.271313	16.24429406917887	CCD I3 on	O2	Y
[deg] Pointing Roll	229.423525	229.5814866435944	CCD S0 on	N	N
[mm] SIM focus pos	-0.684267	-0.6828225247311905	CCD S1 on	N	N
[mm] SIM defocus	0	0.001444936568705701	CCD S2 on	Y	Y
[mm] SIM translation stage pos	-190.132523	-190.1425803651734	CCD S3 on	Y	Y
[mm] SIM translation stage offset	0	0.01005778216563158	CCD S4 on	N	N
[s] Observation start time (MET)	518332458.184000	518331534.17049	CCD S5 on	N	N
Observation start date	2014-06-05T05:13:11	2014-06-05T04:58:54	Number of optional ACIS chips dropped	0	0
[s] Observation end time (MET)	518344458.184000	518345292.23375	On-chip summing requested	N	N
Observation end date	2014-06-05T08:33:11	2014-06-05T08:48:12	Subarray requested	NONE	NONE
Read mode	TIMED	TIMED	Alternating exposures requested	N	N
			[s] Primary exposure time	0.000000	3.1

2.3 Aspect



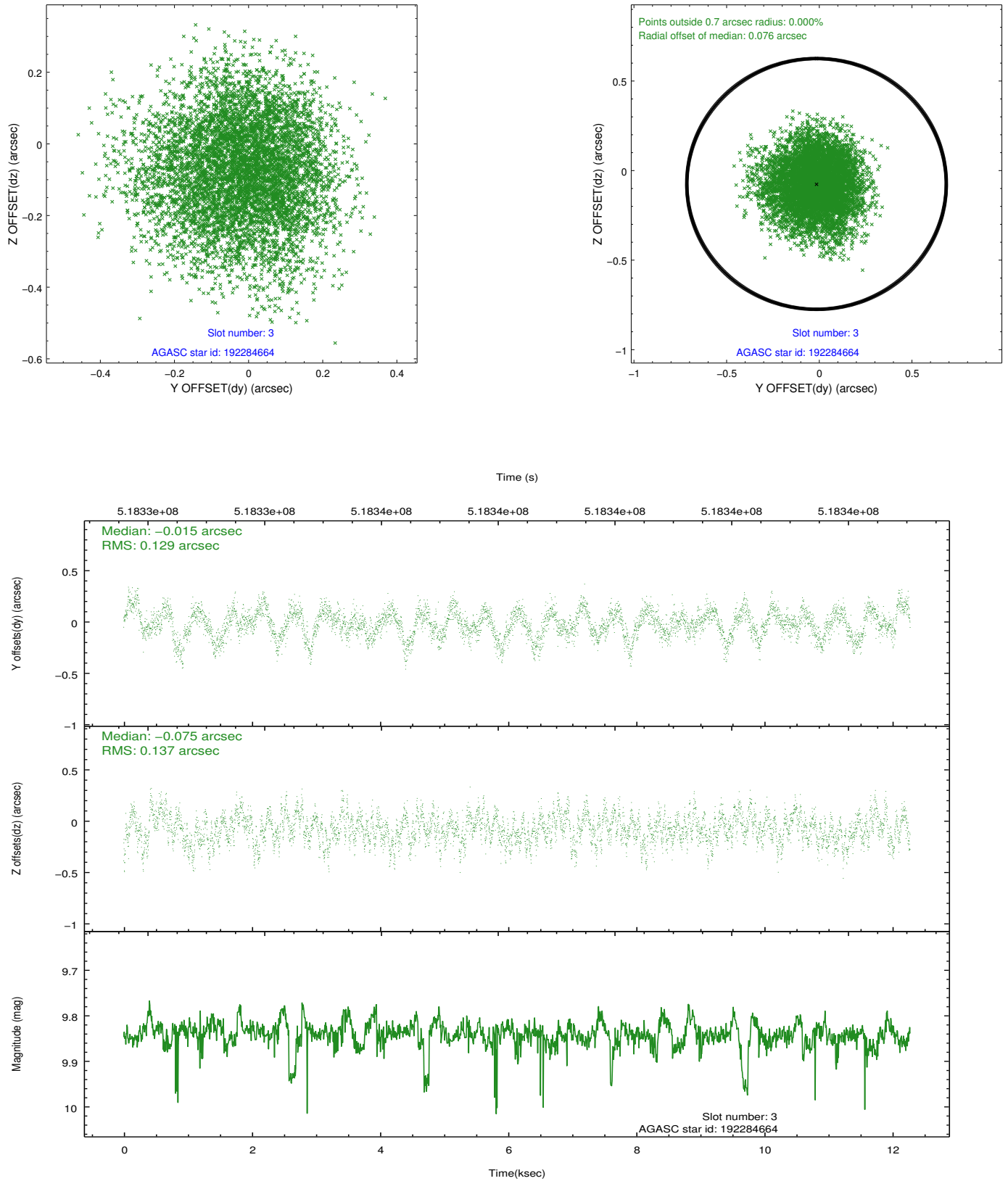


Slot Statistics

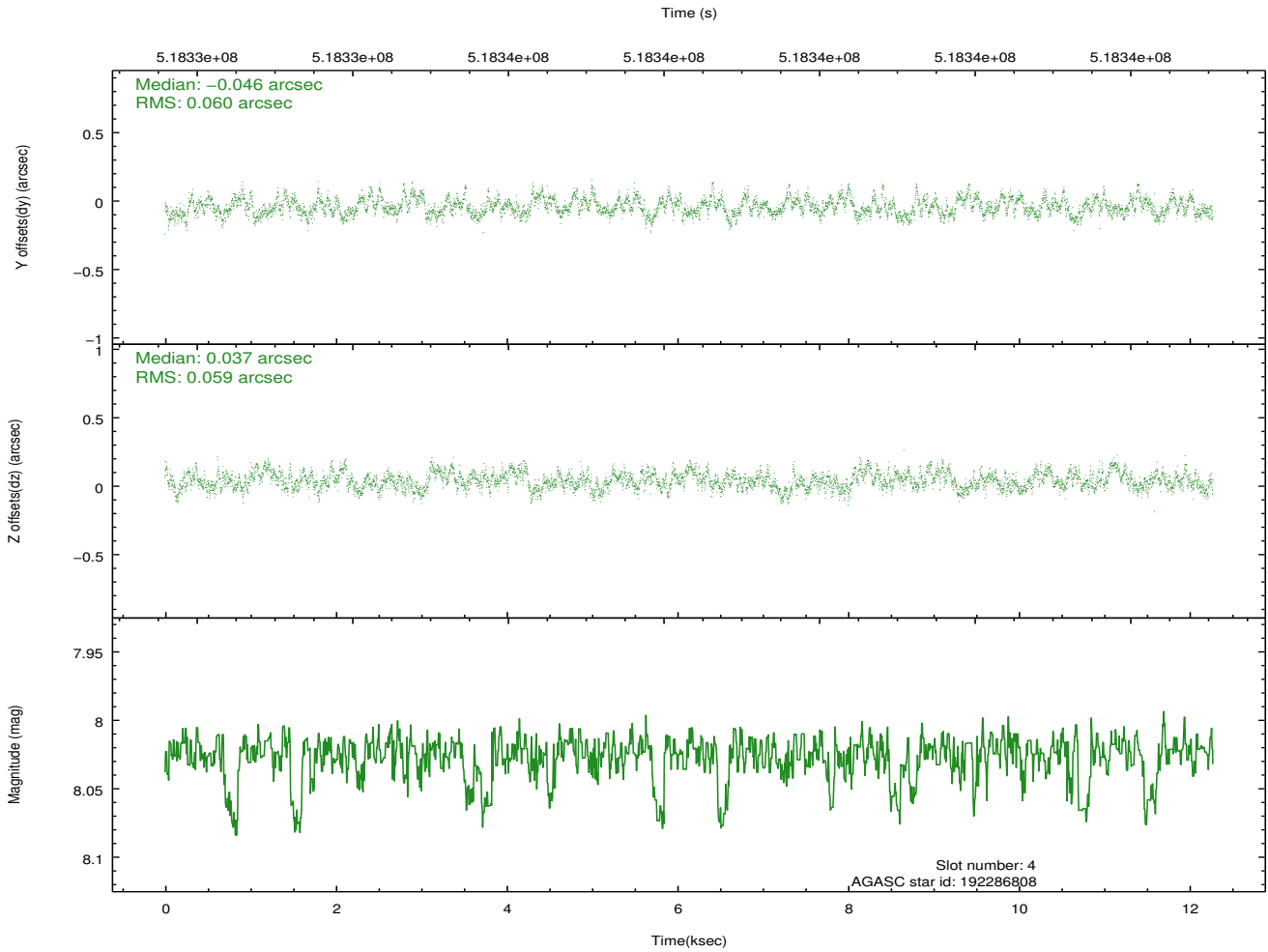
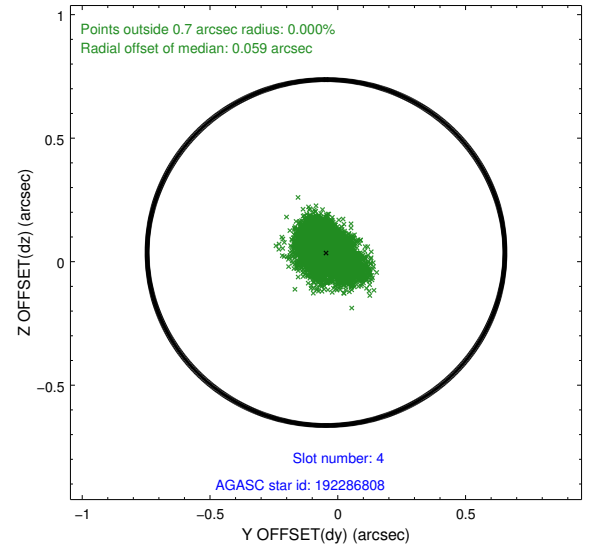
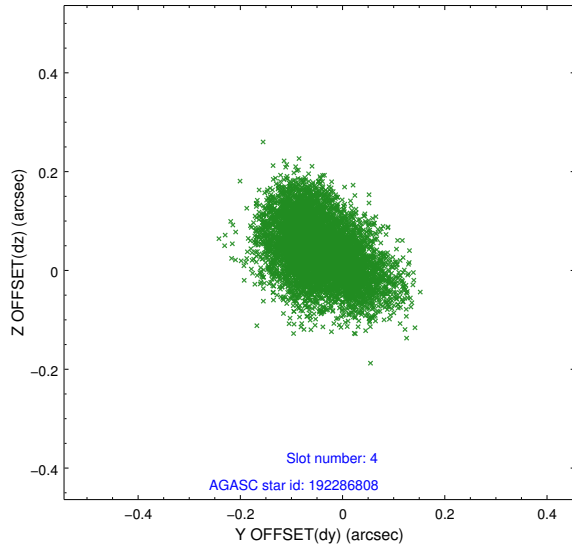
slot	status	used	id	mag	n_pts	med_dy	med_dz	dr1	dr2	ra	dec	mean_y	mean_z
0	FID		ACIS-S-2	7.08	2995	-0.125	-0.019	0.014	0.022	0.000000	0.000000	-768.25	-1736.34
1	FID		ACIS-S-4	7.17	2995	0.266	0.066	0.008	0.014	0.000000	0.000000	2145.22	171.82
2	FID		ACIS-S-5	7.20	2994	-0.170	-0.039	0.018	0.029	0.000000	0.000000	-1820.63	165.83
3	GUIDE	used	192284664	9.84	5978	-0.015	-0.075	0.202	0.322	208.973868	15.844583	496.89	1780.92
4	GUIDE	used	192286808	8.03	5986	-0.046	0.037	0.090	0.144	209.467168	16.202103	-1592.54	2235.59
5	GUIDE	used	192289552	9.56	5982	0.220	0.199	0.159	0.261	208.768311	16.794012	-1635.14	-983.35
6	GUIDE	used	192290192	7.78	5985	-0.110	0.112	0.101	0.162	209.526361	16.403063	-2274.96	1917.19
7	GUIDE	used	192293248	6.73	5986	-0.056	-0.269	0.091	0.152	209.153976	15.891093	-37.92	2143.66

2.4 Star Slots

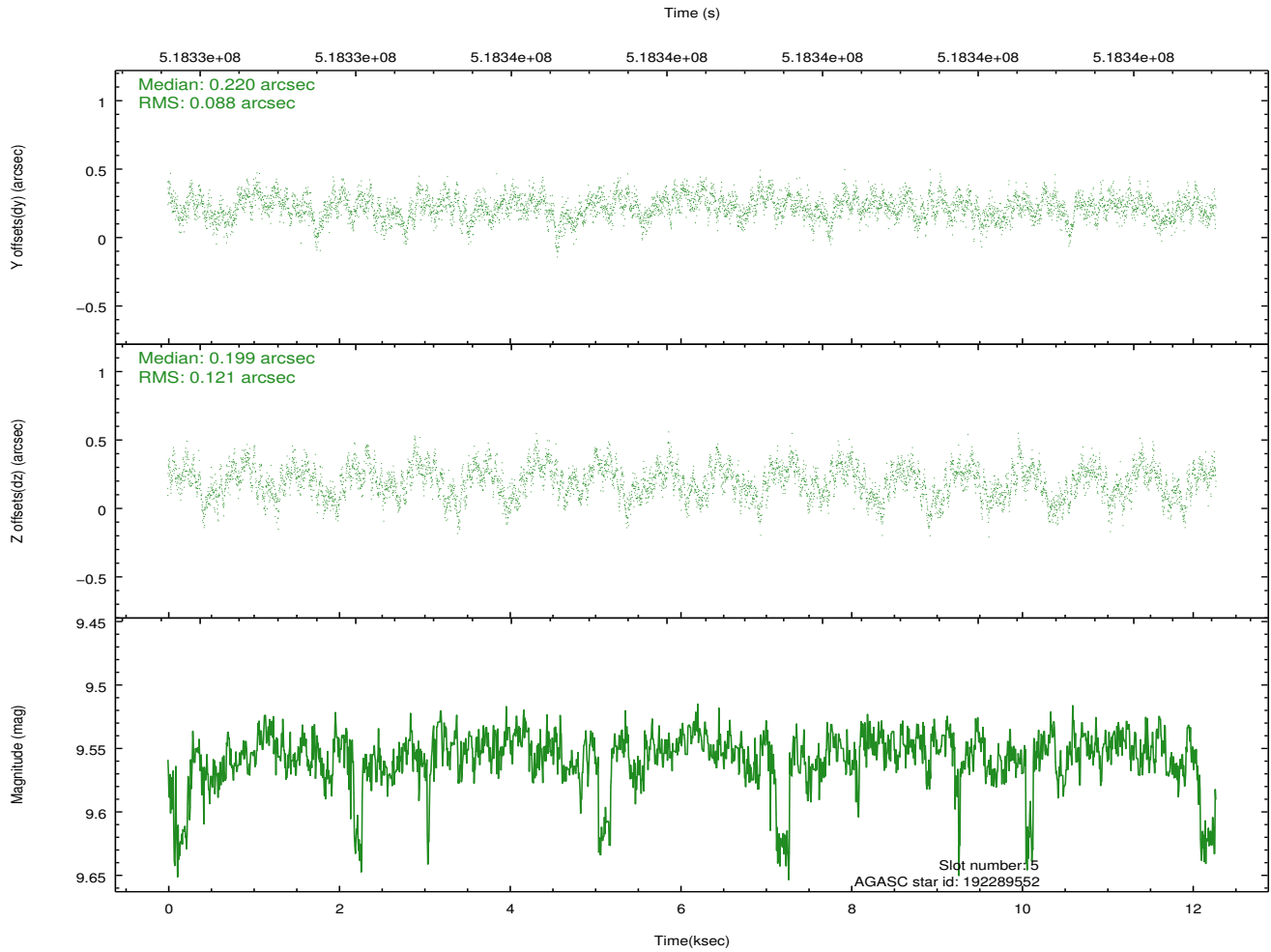
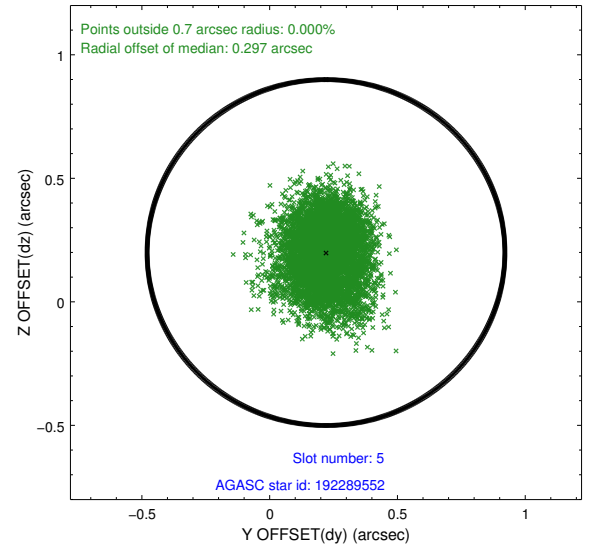
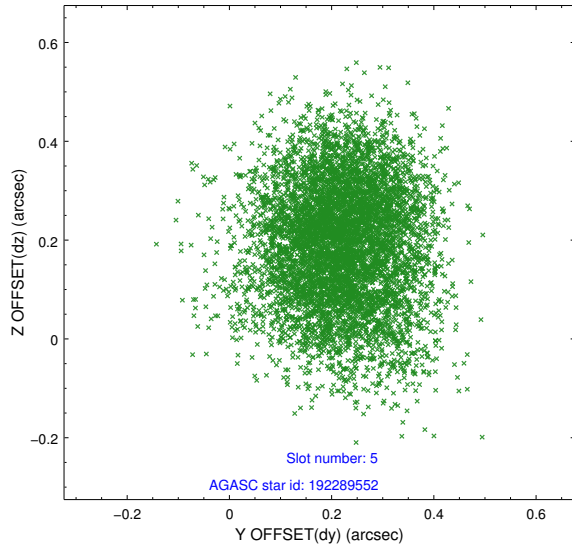
2.4.1 Slot 3



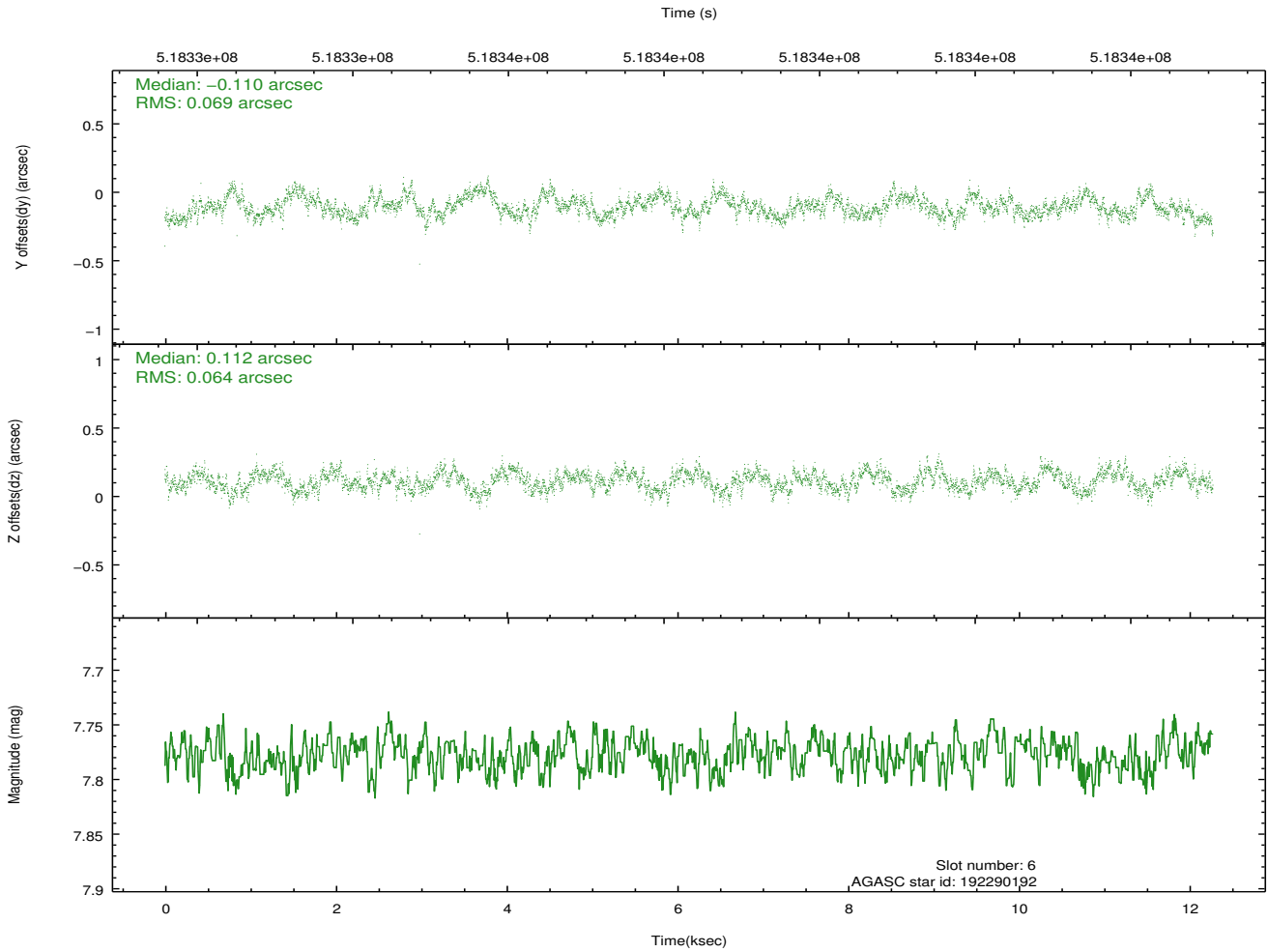
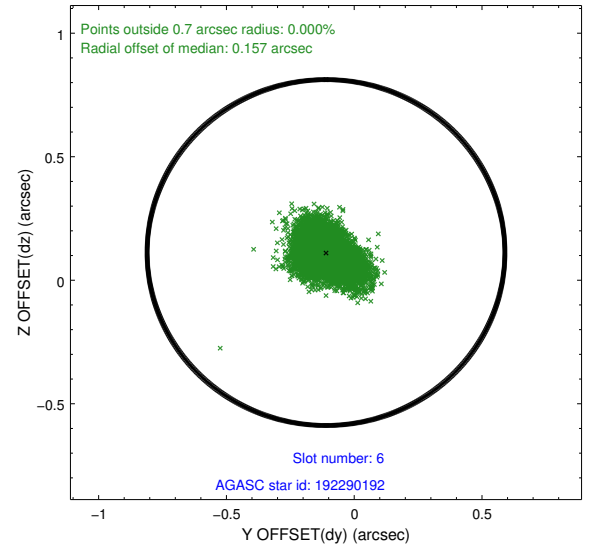
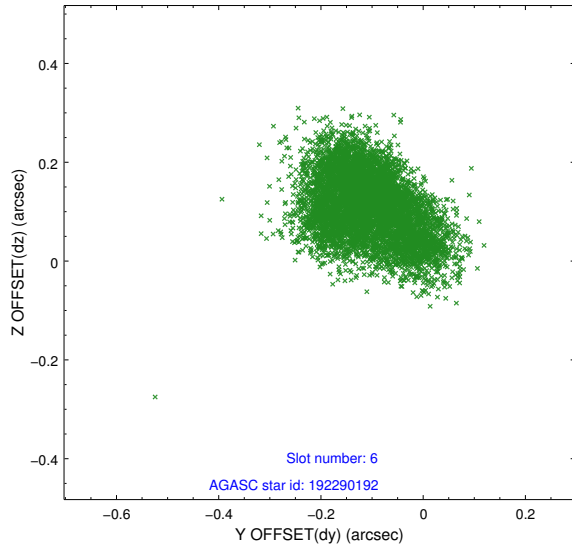
2.4.2 Slot 4



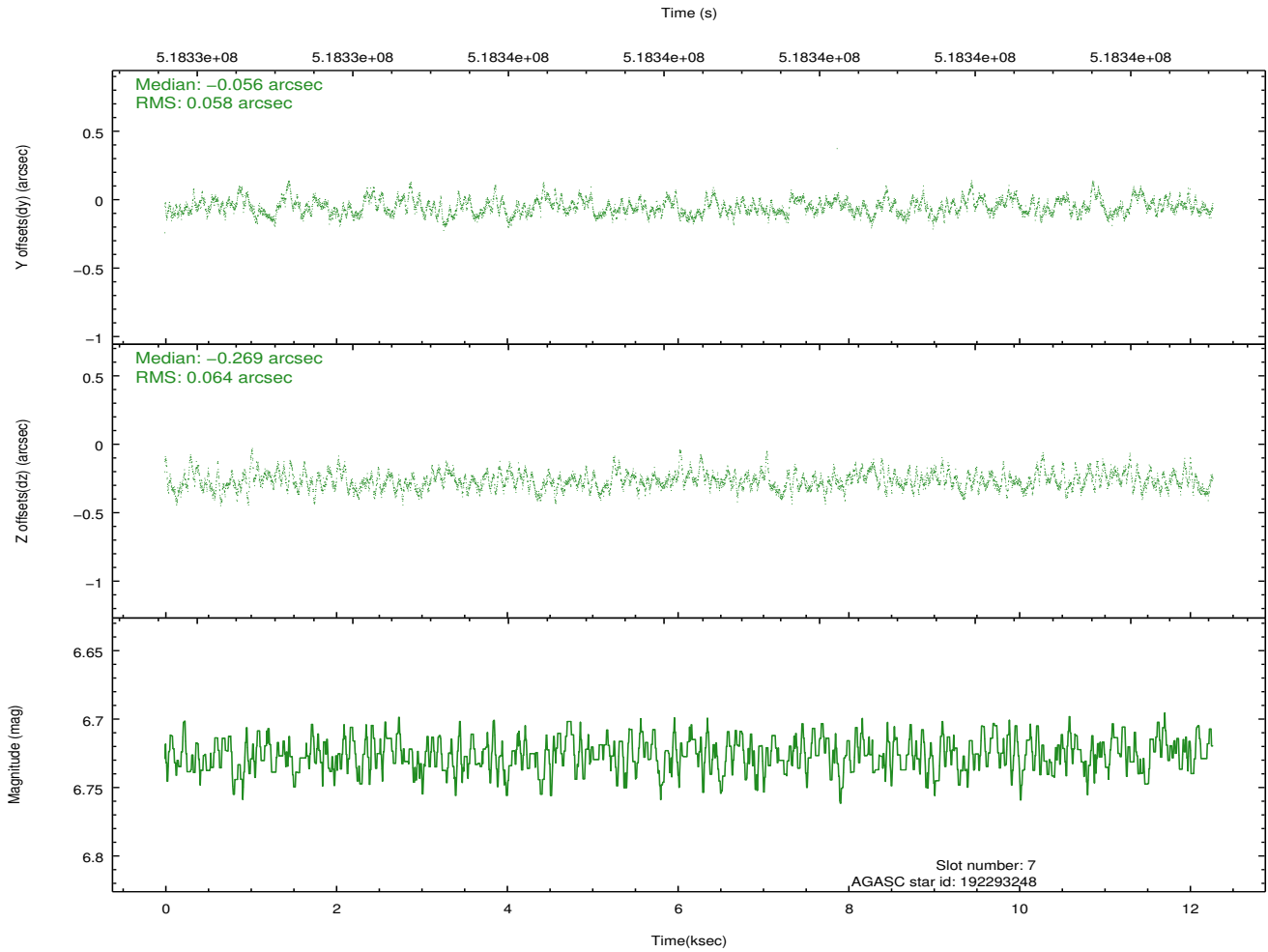
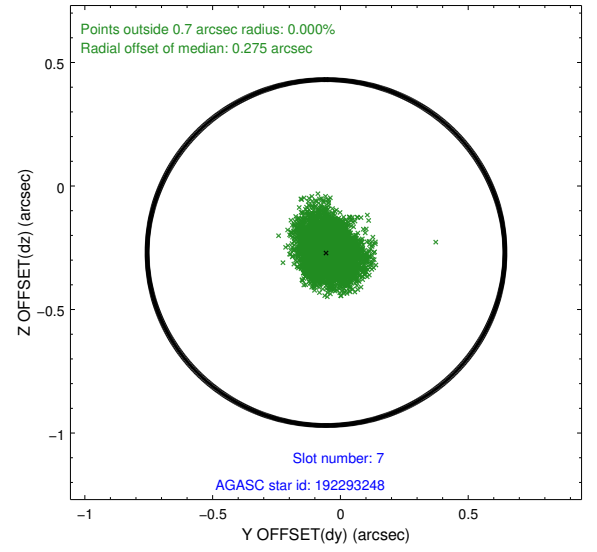
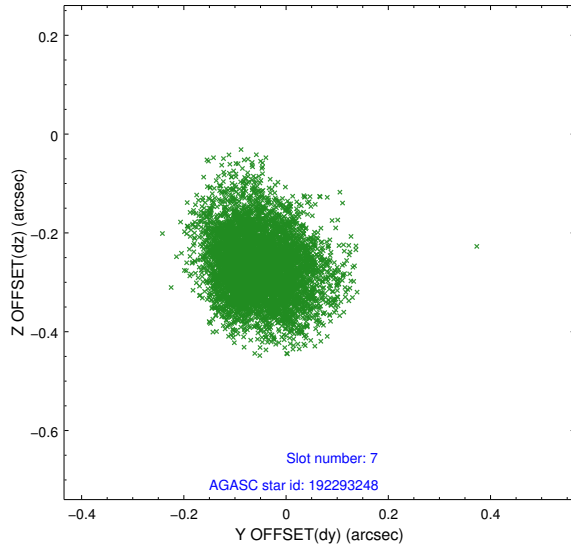
2.4.3 Slot 5



2.4.4 Slot 6

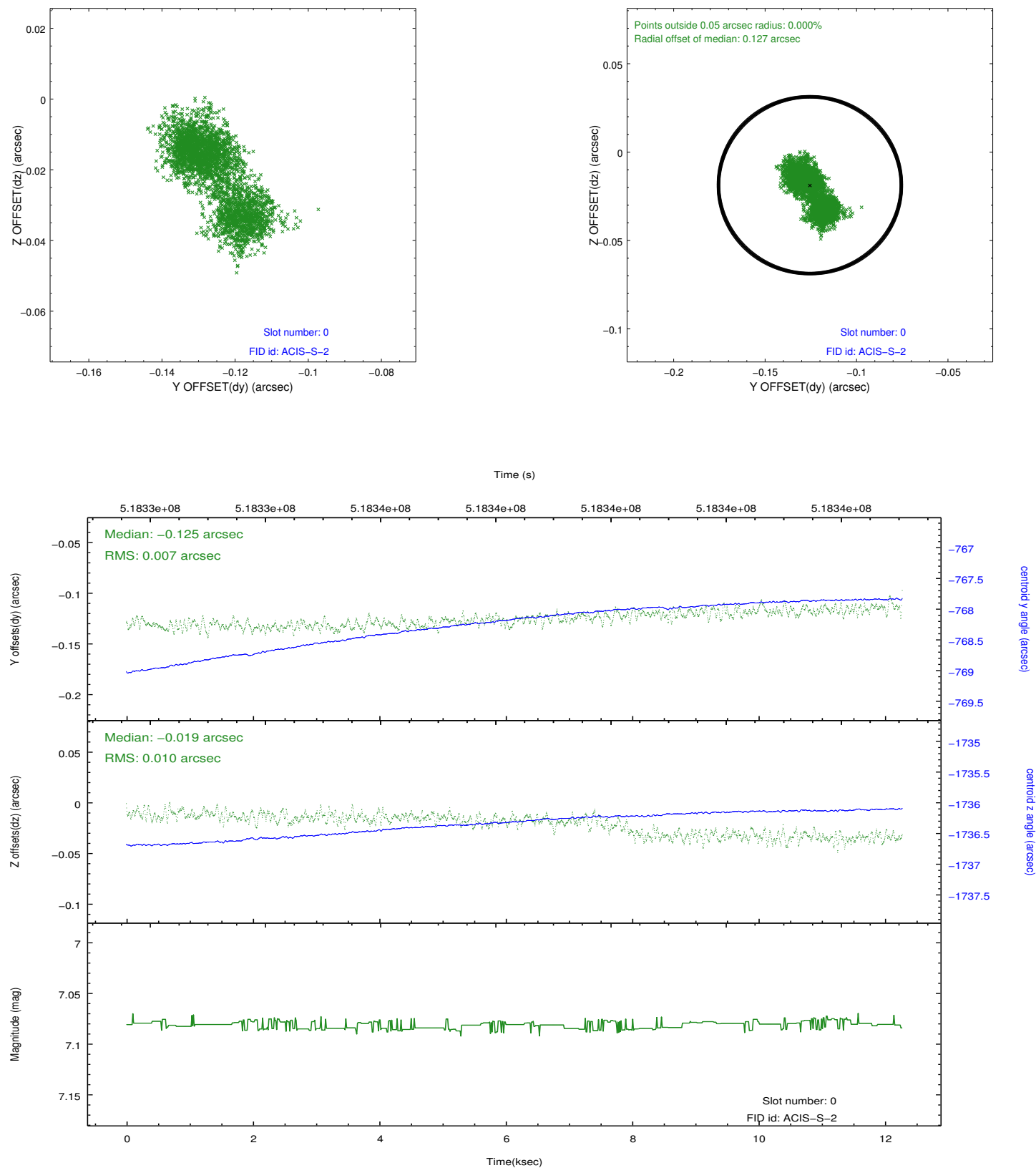


2.4.5 Slot 7

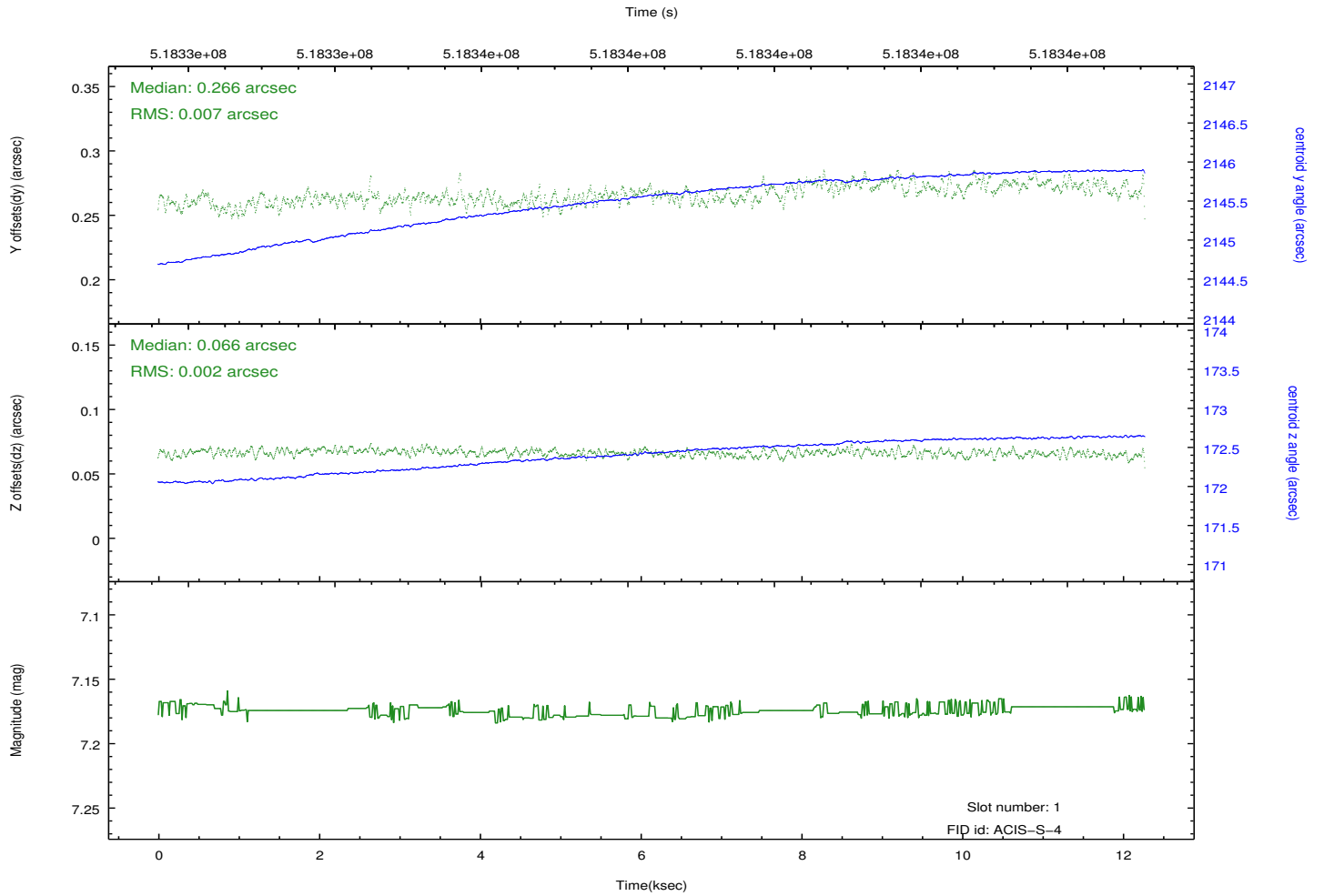
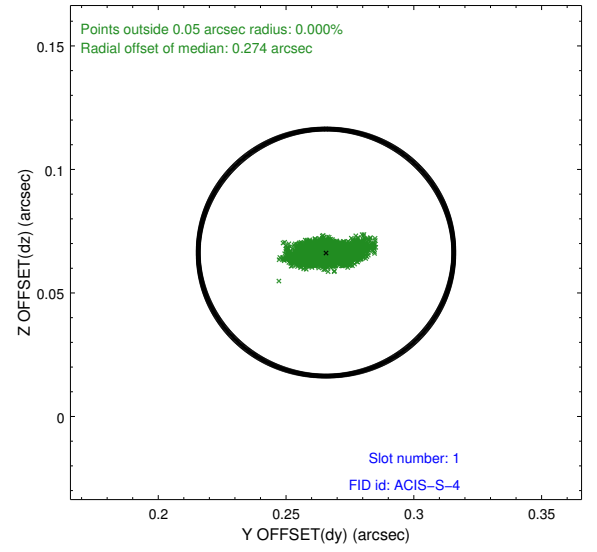
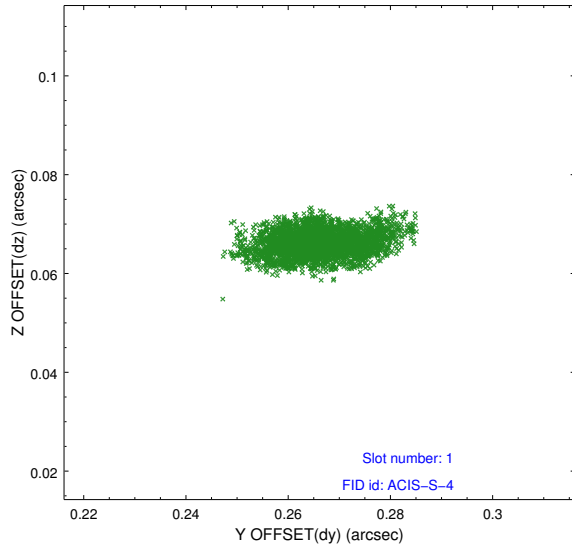


2.5 FID Slots

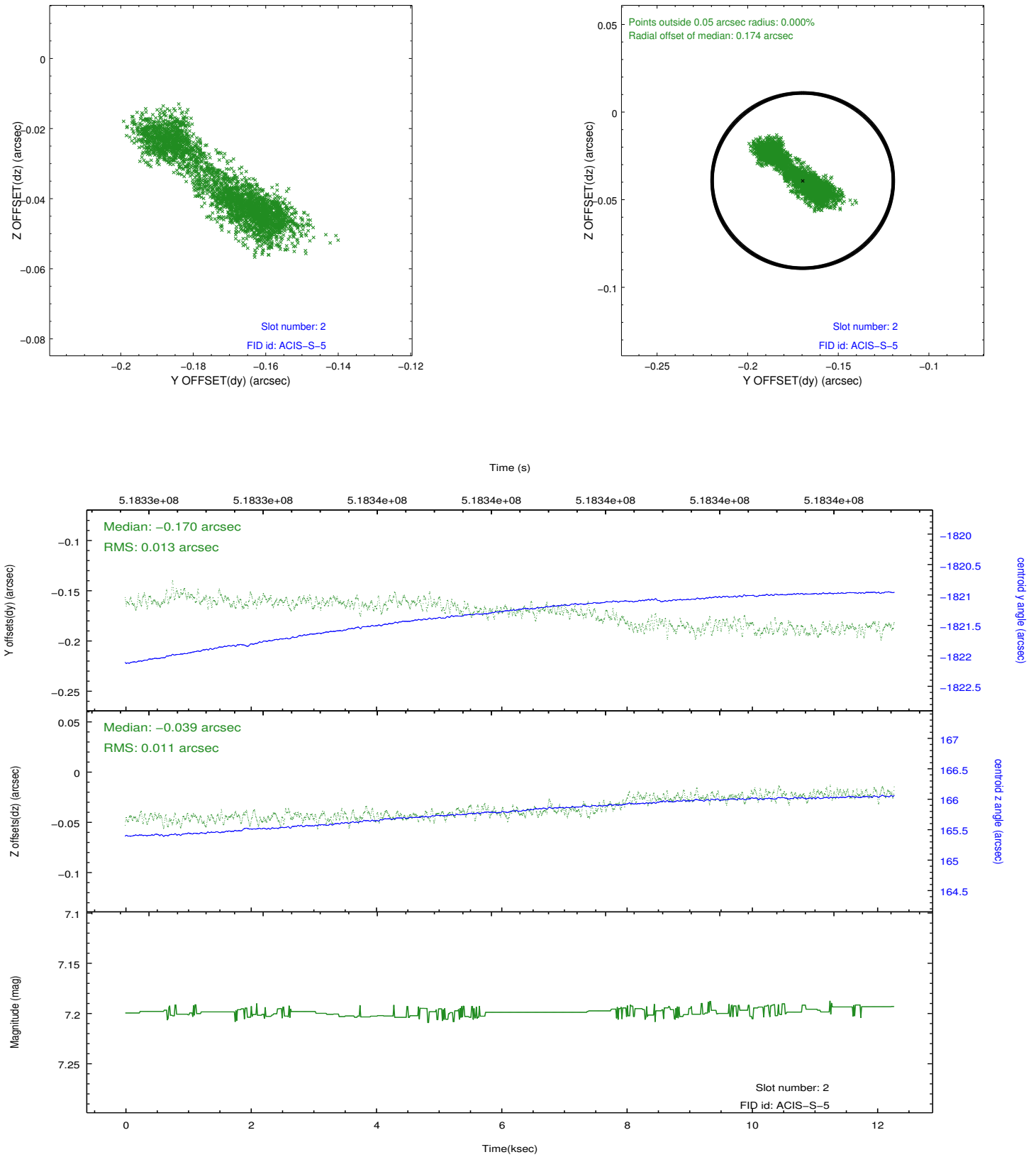
2.5.1 Slot 0



2.5.2 Slot 1



2.5.3 Slot 2



A Summary

A.1 Status

V&V Scientist	Jen Lauer
V&V Date (YYYY-MM-DD)	2014.12.19
V&V Edition	1
V&V Disposition and Status	OK
V&V Charge Time	12.077600092888

A.2 Comments

These data have been reprocessed with new aspect alignment calibration files that correct small mean offsets (up to 0.4 arcsecs) and improve overall astrometric accuracy. The new calibration was determined using data from the time period being reprocessed and was performed using cross-correlation of X-ray sources with radio and optical counterparts.