

# V&V Reference Report

## L2 ASCDS Version : 10.2.4

Observation 14512 - L2 Version 1  
Chandra X-Ray Center

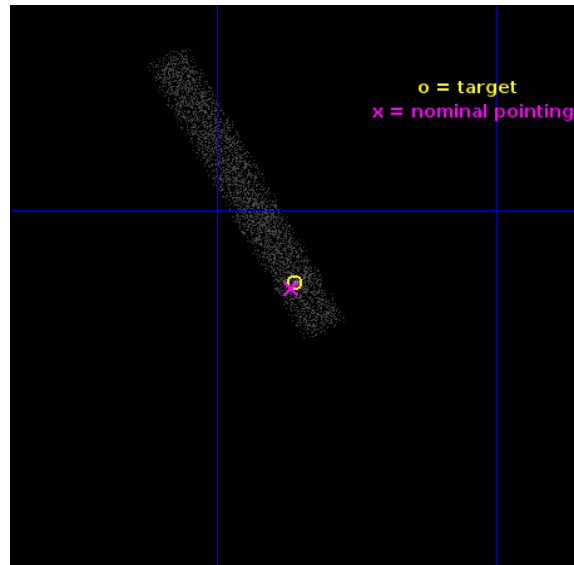
L2 Processing Date : Jul 12 2014

## Contents

<b>1</b>	<b>Front</b>	<b>2</b>
<b>2</b>	<b>OBI</b>	<b>3</b>
2.1	OBI . . . . .	3
2.1.1	Images . . . . .	3
2.1.2	Bias . . . . .	3
2.1.3	Parameters . . . . .	4
2.1.4	Events . . . . .	4
2.2	Compared Parameters . . . . .	5
2.3	Aspect . . . . .	6
2.4	Star Slots . . . . .	9
2.4.1	Slot 3 . . . . .	9
2.4.2	Slot 4 . . . . .	10
2.4.3	Slot 5 . . . . .	11
2.4.4	Slot 6 . . . . .	12
2.4.5	Slot 7 . . . . .	13
2.5	FID Slots . . . . .	14
2.5.1	Slot 0 . . . . .	14
2.5.2	Slot 1 . . . . .	15
2.5.3	Slot 2 . . . . .	16
<b>A</b>	<b>Summary</b>	<b>17</b>
A.1	Status . . . . .	17
A.2	Comments . . . . .	17

# 1 Front

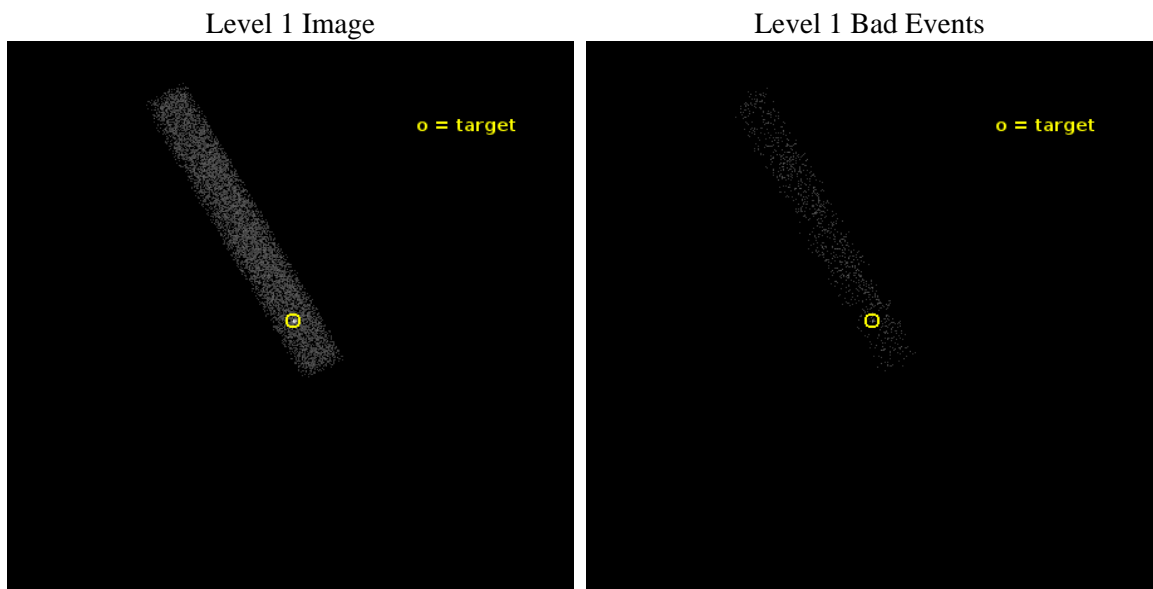
seq_num	702749	Sequence number
obs_id	14512	Observation id
title	ENERGY DEPENDENT X-RAY MICROLENSING AND THE STRUCTURE OF QUASARS	P
observer	Prof. Christopher Kochanek	Principal investigator
object	RXJ1131-1231	Source name
dtcycle	0	&#160
cycle	P	events from which exps? Prim/Second/Both
ra_targ	172.965	Observer's specified target RA [deg]
dec_targ	-12.5325	Observer's specified target Dec [deg]
ra_nom	172.96646671345	Nominal RA [deg]
dec_nom	-12.535255986072	Nominal Dec [deg]
roll_nom	240.81133671192	Nominal Roll [deg]
revision	1	Processing version of data
ontime	11069.543240488	Sum of GTIs [s]
livetime	10039.491420722	Livetime [s]
ontime7	11069.543240488	Sum of GTIs [s]
l2events	7141	Number of level 2 events



## 2 OBI

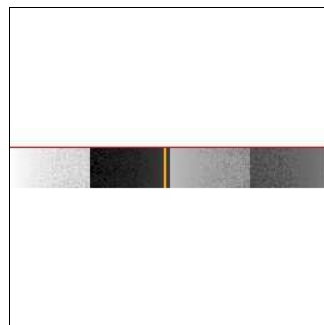
### 2.1 OBI

#### 2.1.1 Images



#### 2.1.2 Bias

Chip 7



### 2.1.3 Parameters

obi_num	1	Obi number	sched_exp_time	11000.000000	[s] Scheduled observation exposure time
ascdsver	10.2.4	Processing system revision	ontime	11069.543240488	Sum of GTIs [s]
caldsver	4.6.2	&#160	ontime7	11069.543240488	Sum of GTIs [s]
date	2014-07-12T14:47:52	Date and time of file creation	l1events	12206	Number of level 1 events
revision	1	Processing version of data			

### 2.1.4 Events

	<b>ccd 7</b>
level 1 events	12206
rejected events	4863
rejected %	39%

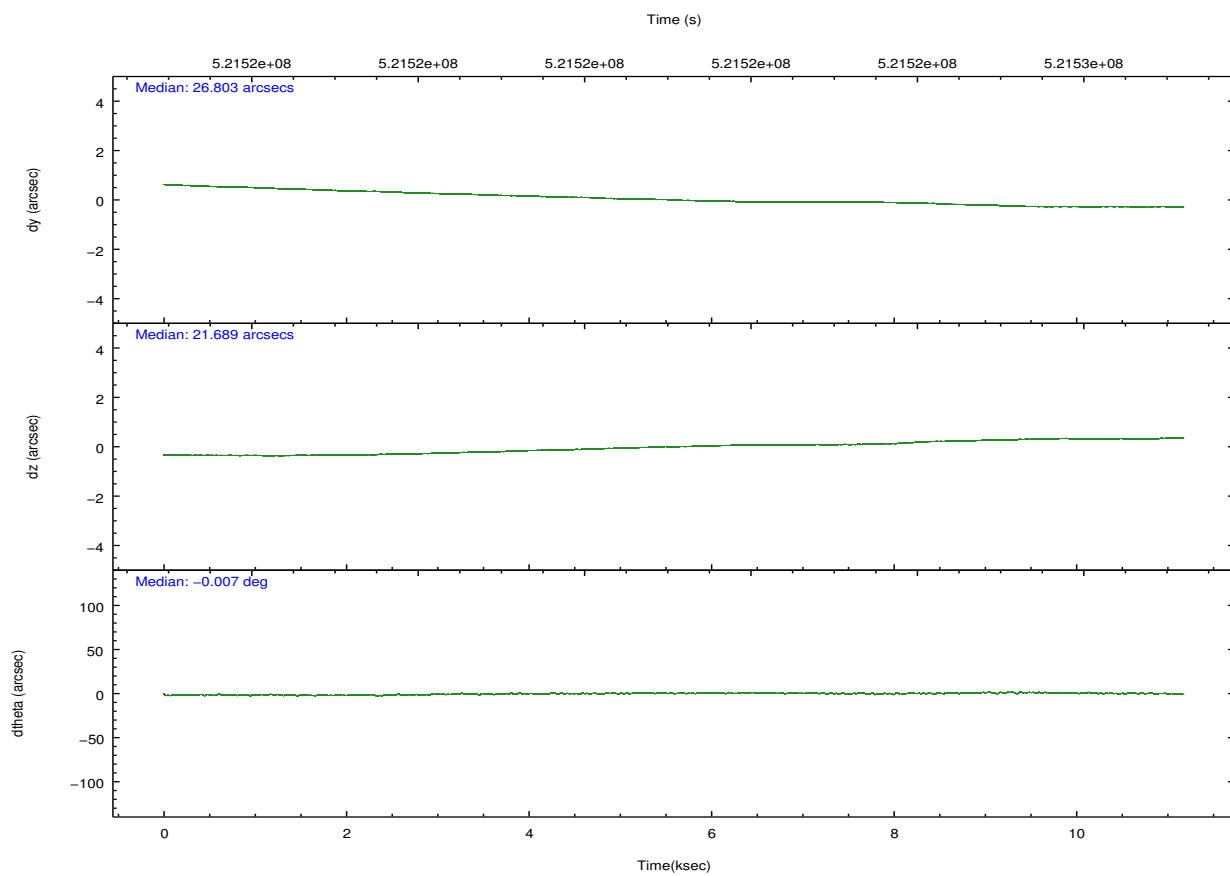
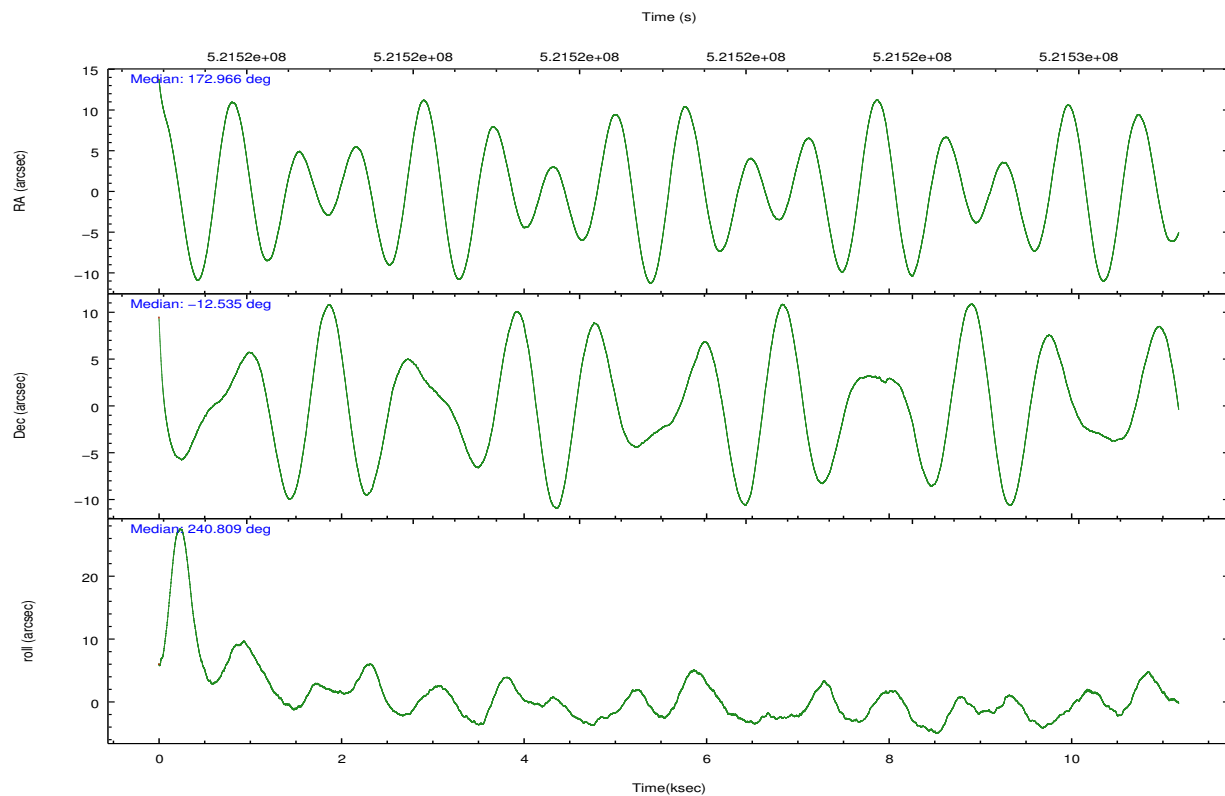
	<b>ccd 7</b>
grade 0 events	1158
	9%
grade 1 events	15
	0%
grade 2 events	1624
	13%
grade 3 events	910
	7%
grade 4 events	912
	7%
grade 5 events	991
	8%
grade 6 events	2739
	22%
grade 7 events	3857
	31%



## 2.2 Compared Parameters

Parameter	Planned	Actual	Parameter	Planned	Actual
Instrument	ACIS	ACIS	Obspar format version number	7	7
Detector	ACIS-7	ACIS-7	Obspar file type	PREDICTED	ACTUAL
Grating	NONE	NONE	Obspar update status	NONE	UPDATED
Data mode	VFAINT	VFAINT	Number of optional ACIS chips dropped	0	0
Observation mode	POINTING	POINTING	On-chip summing requested	N	N
[deg] Pointing RA	172.965692	172.966466713452	Subarray requested	CUSTOM	1/8
[deg] Pointing Dec	-12.507839	-12.53525598607196	Subarray start row	449	449
[deg] Pointing Roll	240.654553	240.8113367119172	Subarray row count	128	128
[mm] SIM focus pos	-0.684267	-0.6828225247311905	Alternating exposures requested	N	N
[mm] SIM defocus	0	0.001444936568705701	[s] Primary exposure time	0.000000	0.4
[mm] SIM translation stage pos	-190.132523	-190.1425803651734			
[mm] SIM translation stage offset	0	0.01005778216563158			
[s] Observation start time (MET)	521515660.184000	521514532.95909			
Observation start date	2014-07-12T01:26:33	2014-07-12T01:08:52			
[s] Observation end time (MET)	521526660.184000	521527728.80982			
Observation end date	2014-07-12T04:29:53	2014-07-12T04:48:48			
Read mode	TIMED	TIMED			

## 2.3 Aspect

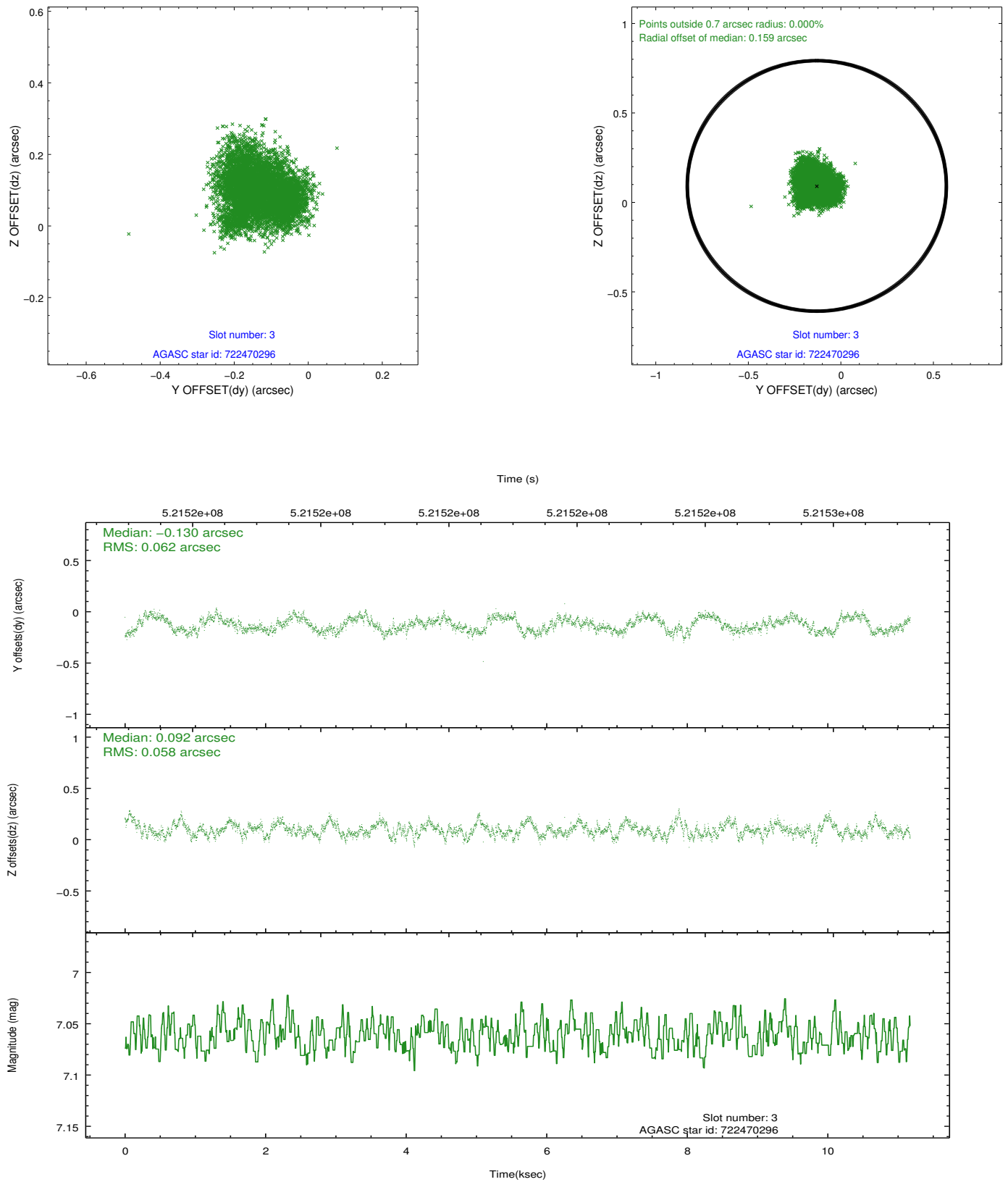


### Slot Statistics

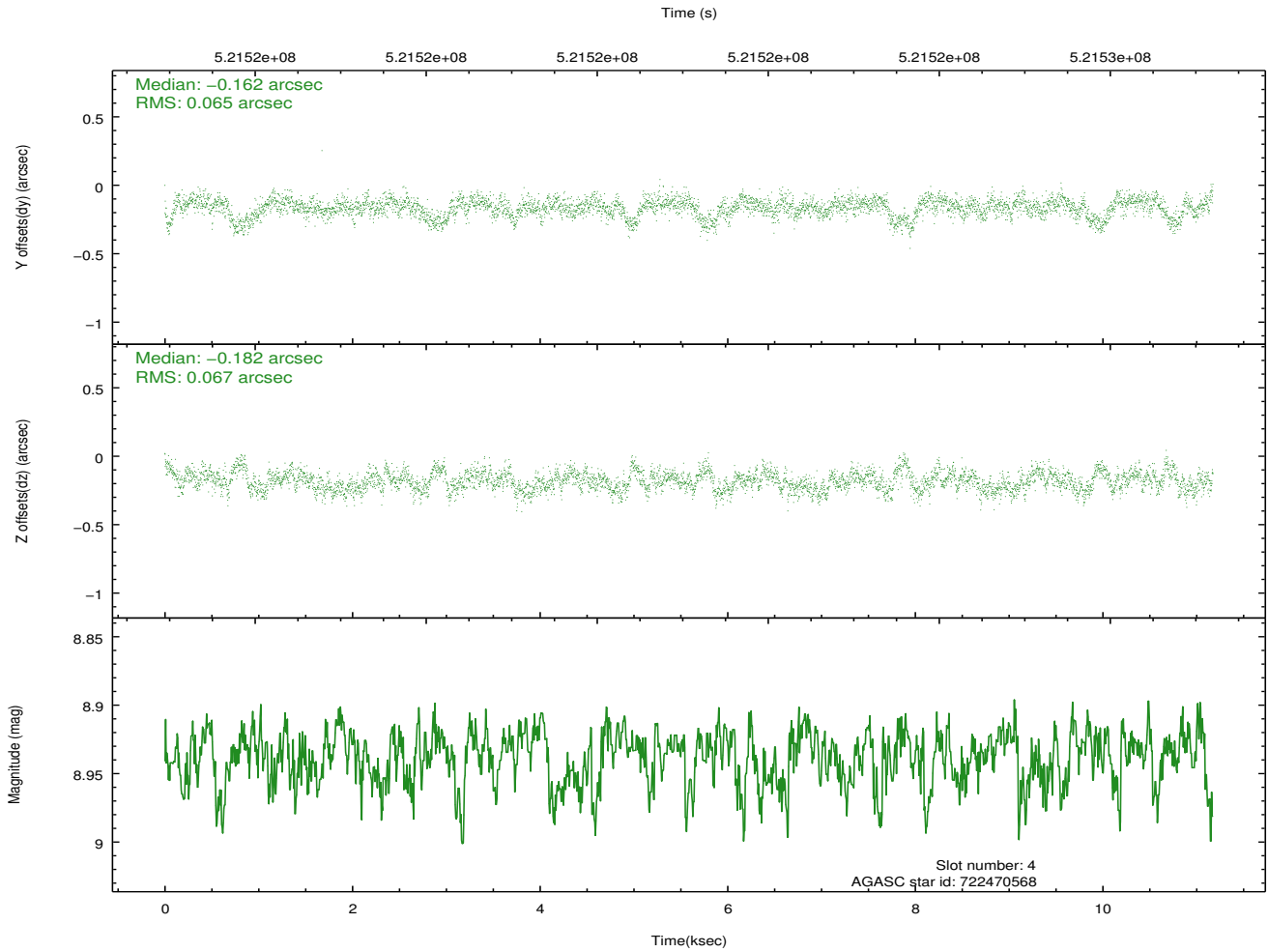
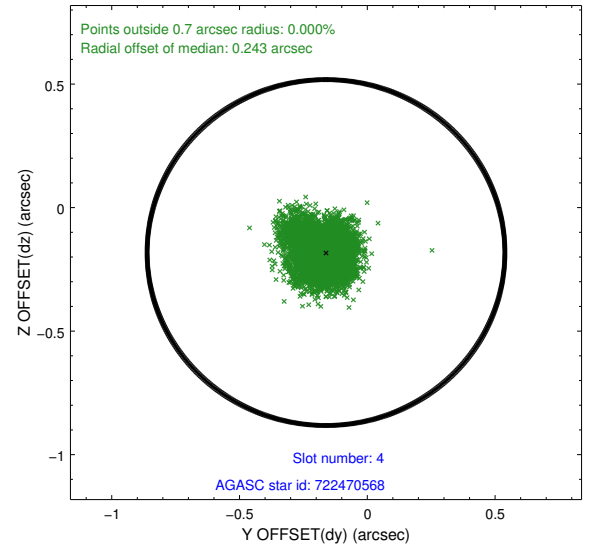
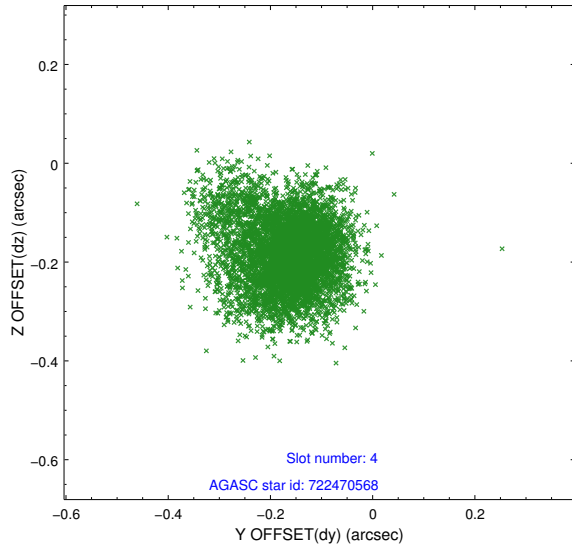
slot	status	id	mag	n_pts	med_dy	med_dz	dr1	dr2	ra	dec	mean_y	mean_z
0	FID	ACIS-S-1	7.12	2726	0.100	-0.092	0.011	0.020	0.000000	0.000000	916.01	-1738.87
1	FID	ACIS-S-5	7.16	2726	-0.231	0.040	0.017	0.027	0.000000	0.000000	-1833.10	158.28
2	FID	ACIS-S-6	7.26	2725	0.107	0.065	0.019	0.028	0.000000	0.000000	381.03	802.83
3	GUIDE	722470296	7.06	5451	-0.130	0.092	0.093	0.137	172.921689	-12.381367	-320.75	-358.05
4	GUIDE	722470568	8.94	5448	-0.162	-0.182	0.097	0.167	173.210269	-12.342558	-939.71	458.32
5	GUIDE	722473176	9.50	5446	0.372	0.321	0.244	0.358	172.599746	-12.066793	-750.95	-1900.22
6	GUIDE	722871728	9.68	5398	0.090	-0.001	0.148	0.236	173.202235	-12.568355	-216.81	831.18
7	GUIDE	722873464	7.34	5451	-0.175	-0.251	0.119	0.198	172.661543	-13.050266	2226.06	28.49

## 2.4 Star Slots

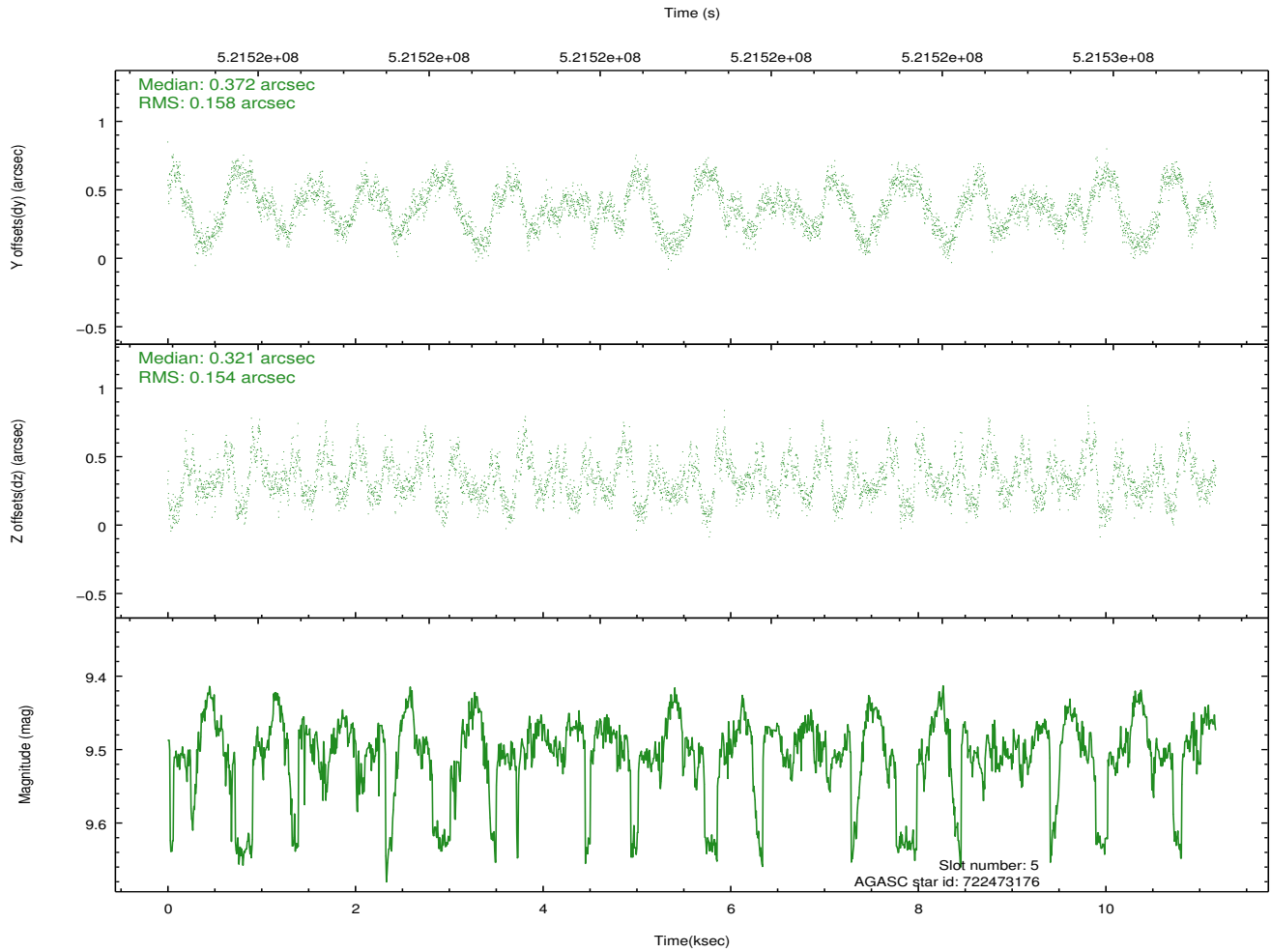
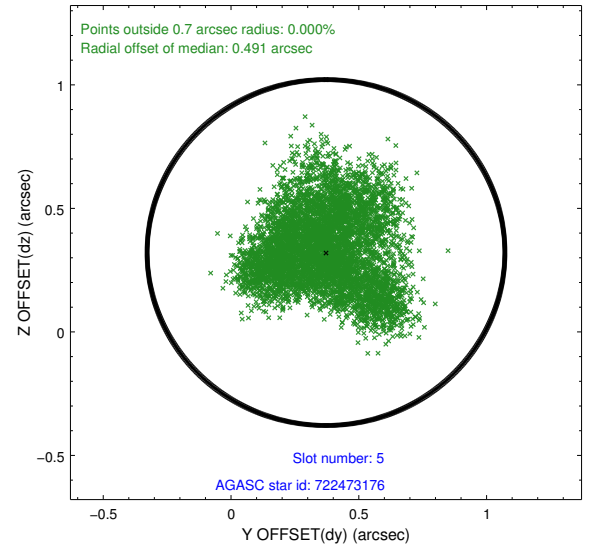
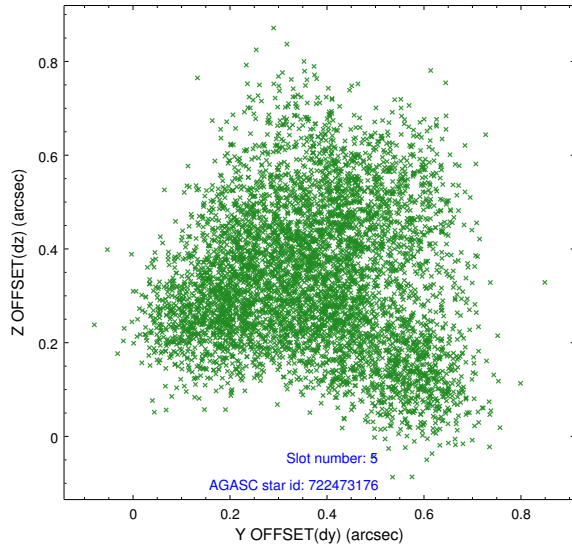
### 2.4.1 Slot 3



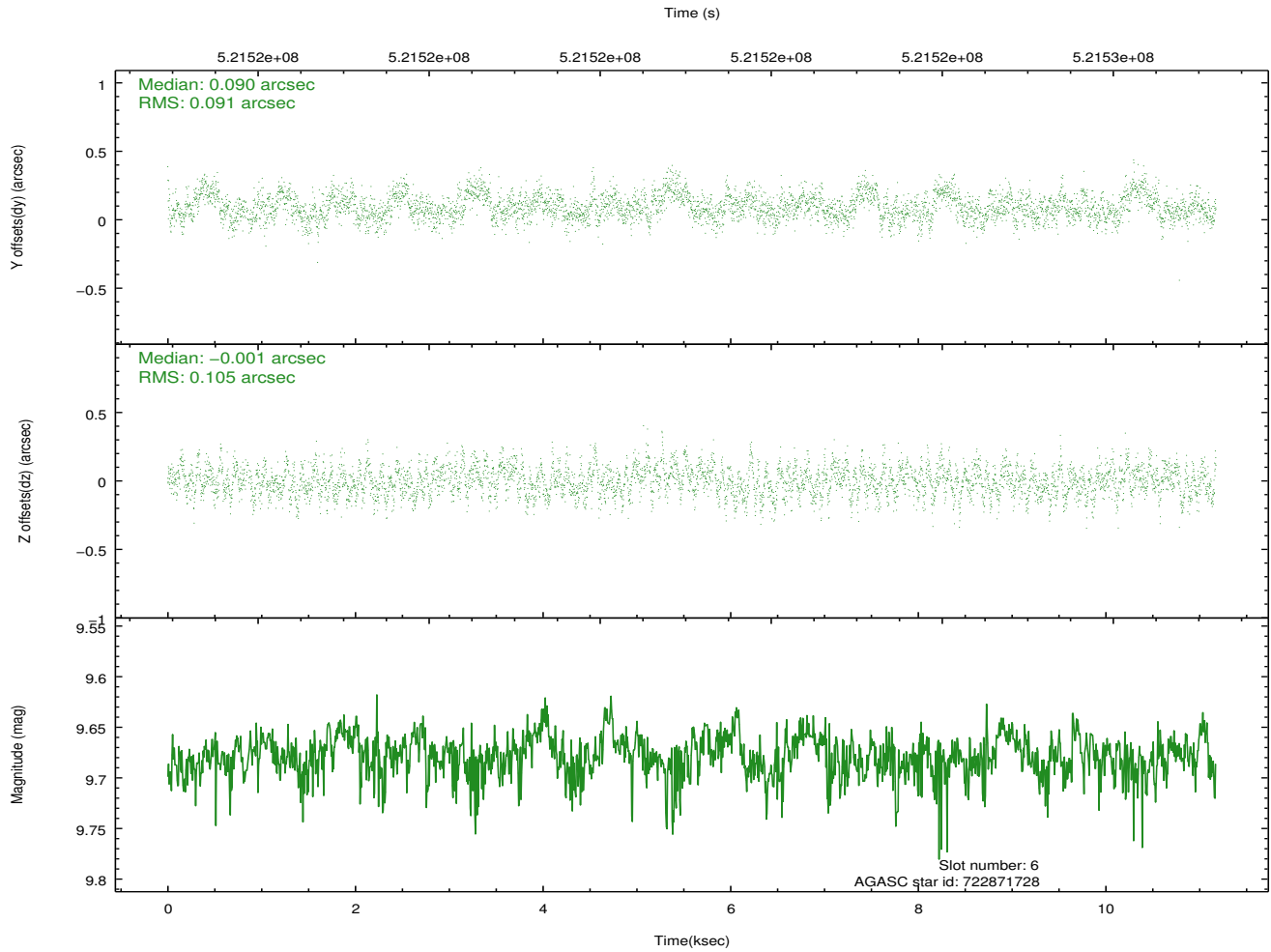
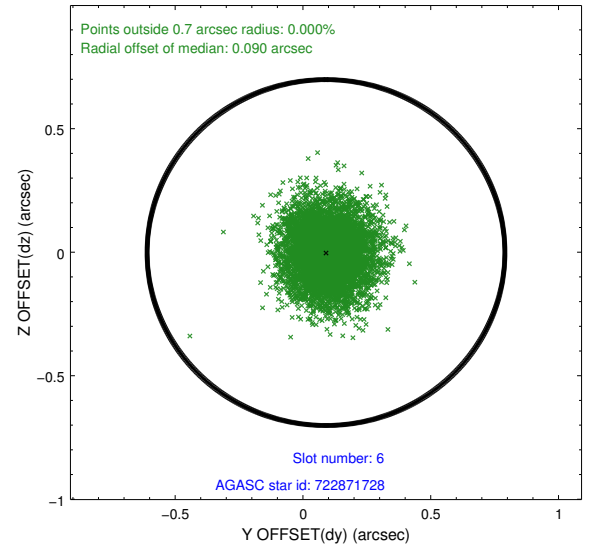
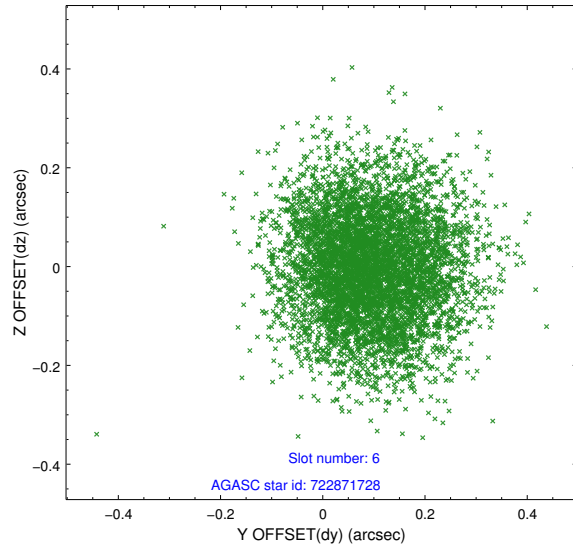
### 2.4.2 Slot 4



### 2.4.3 Slot 5

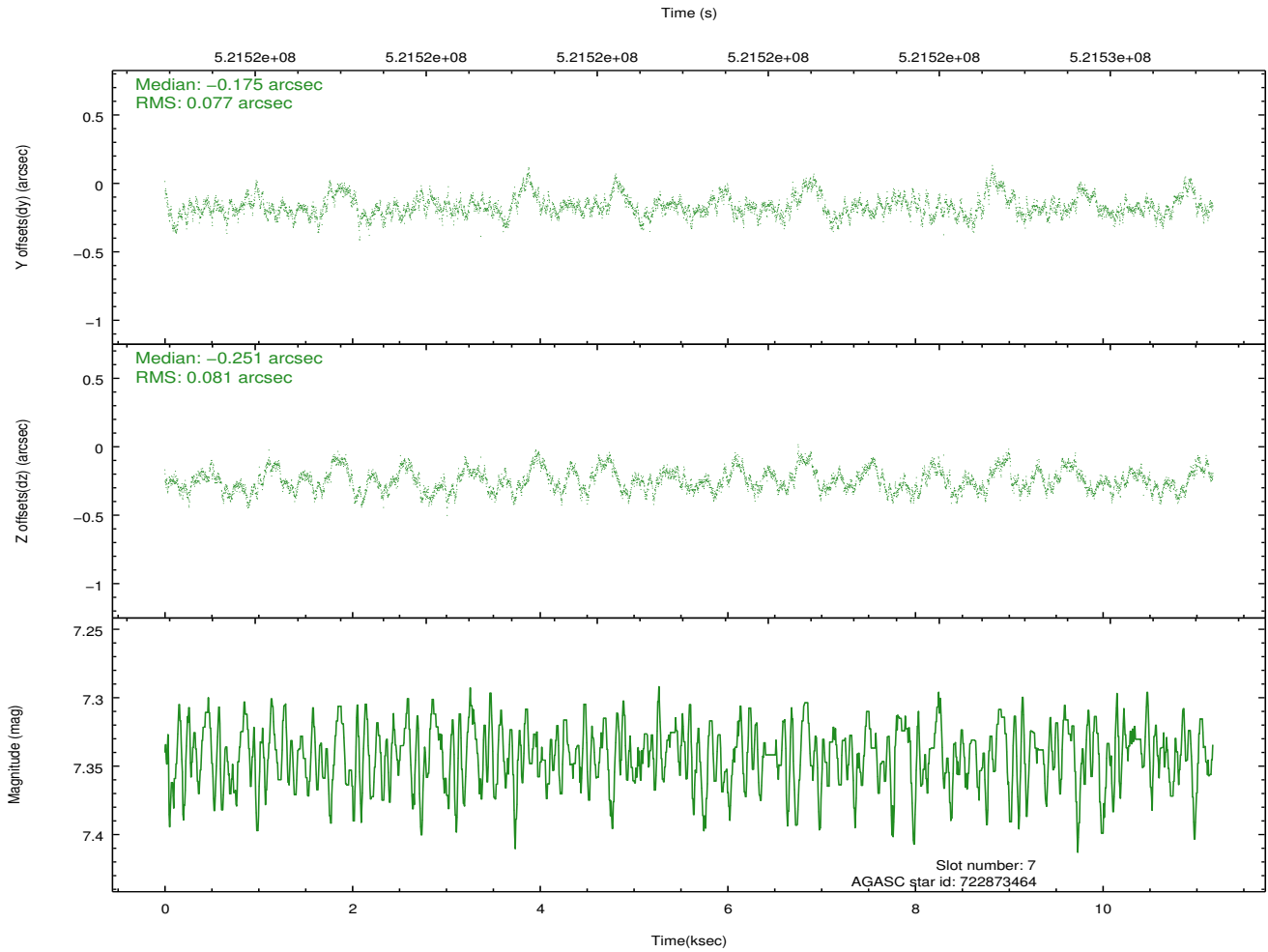
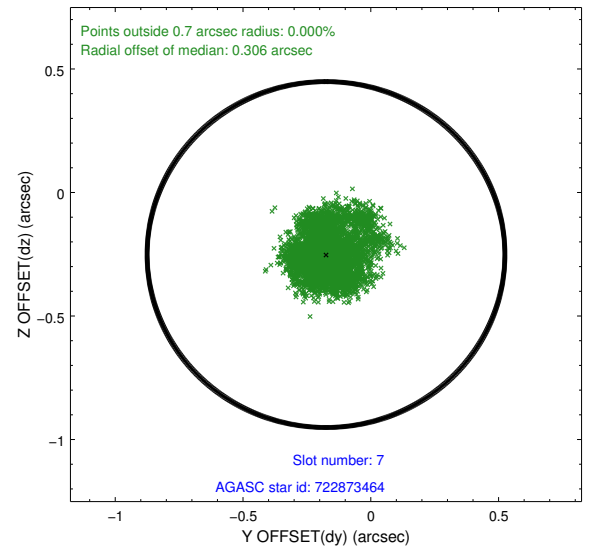
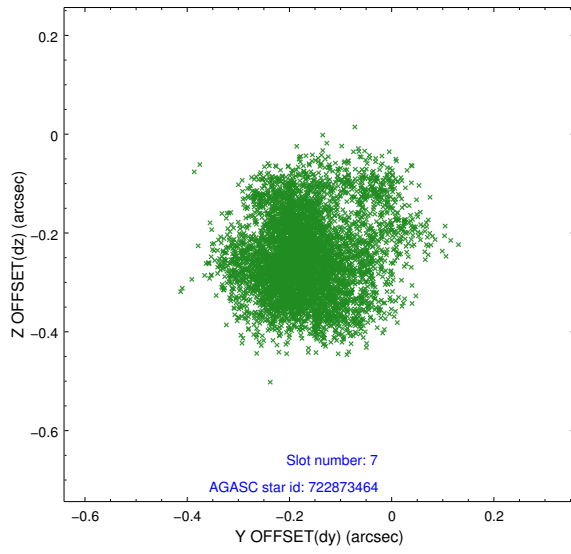


## 2.4.4 Slot 6



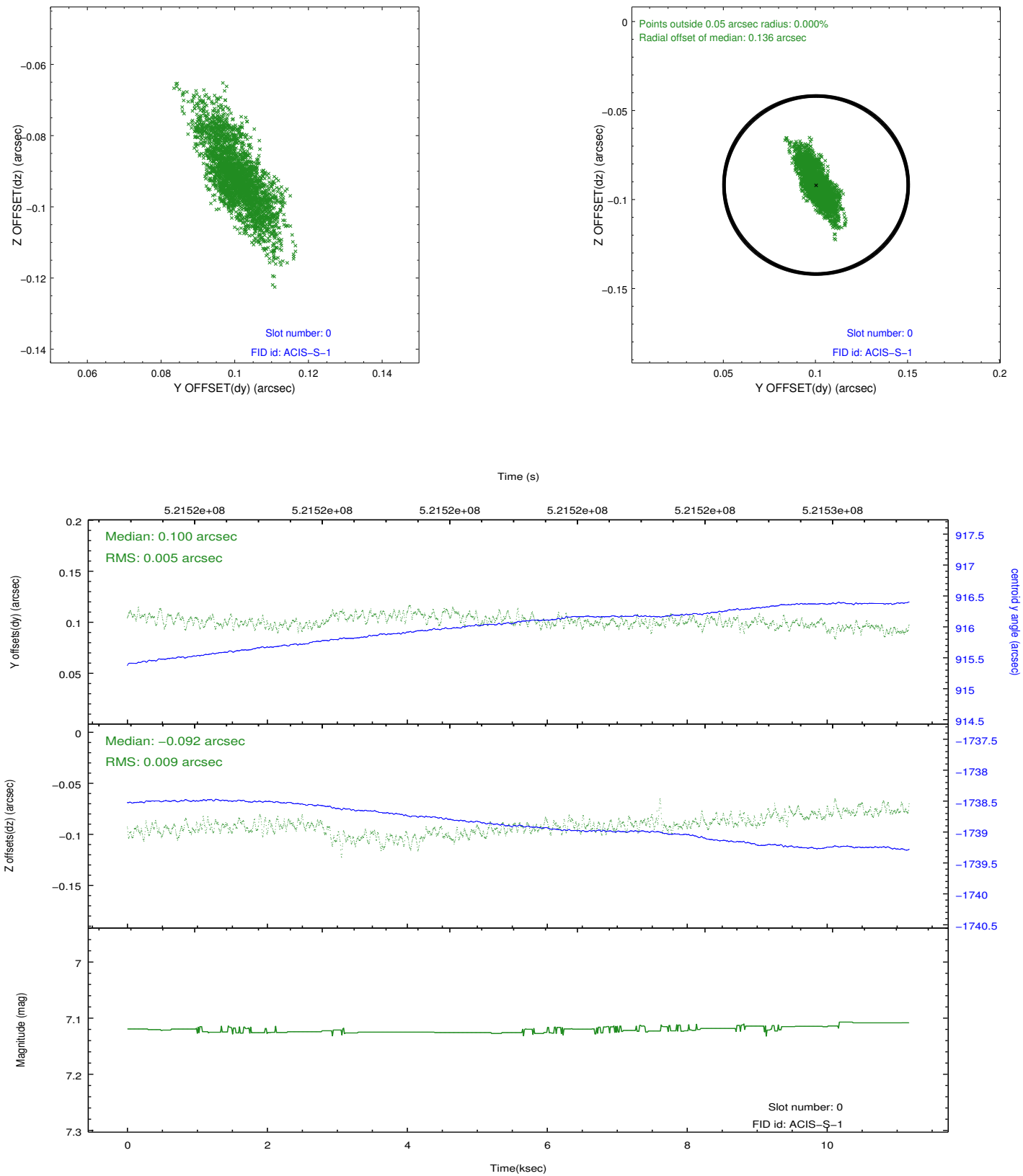


## 2.4.5 Slot 7

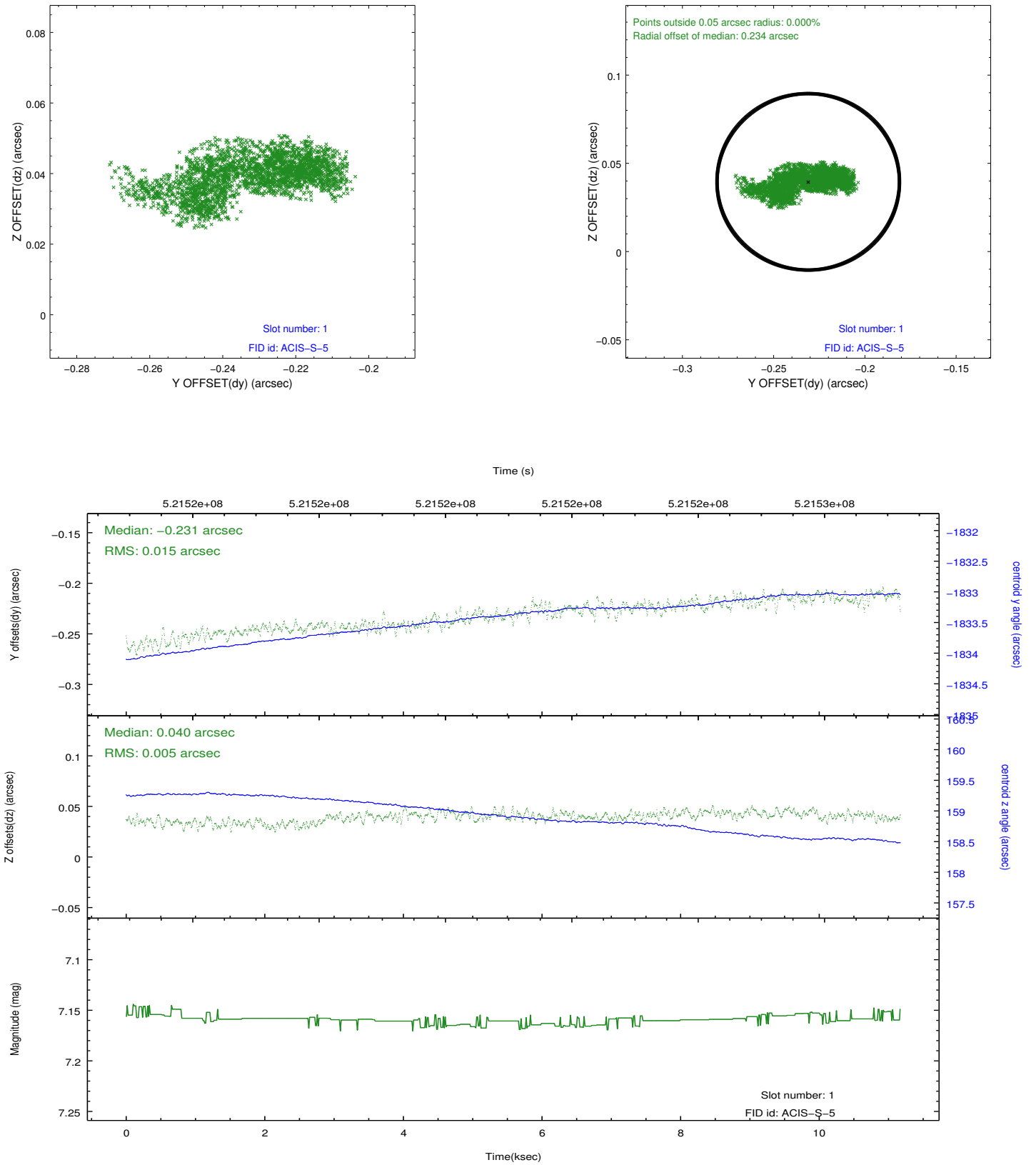


## 2.5 FID Slots

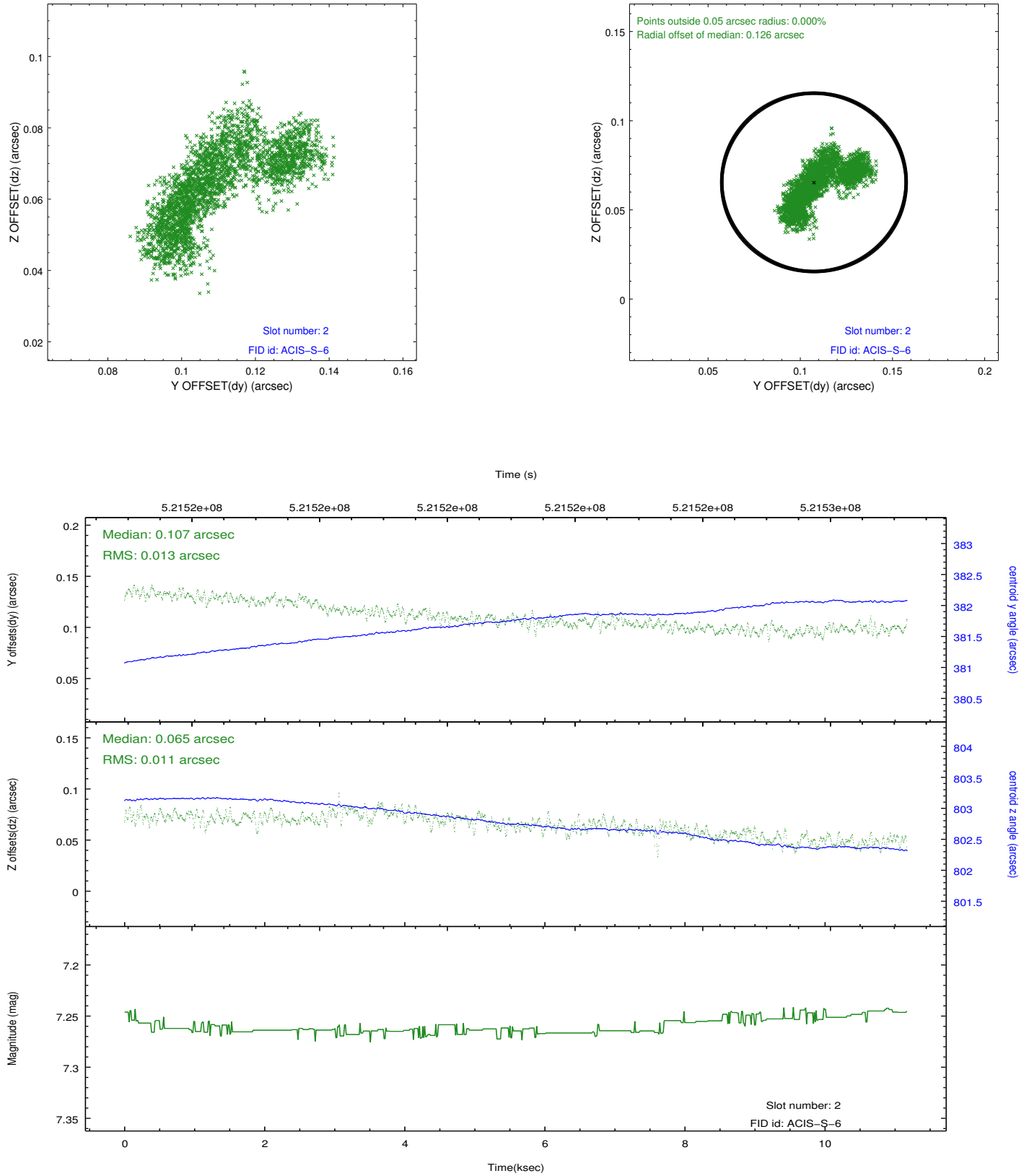
### 2.5.1 Slot 0



## 2.5.2 Slot 1



### 2.5.3 Slot 2



# A Summary

## A.1 Status

V&V Scientist	Beth Sundheim
V&V Date (YYYY-MM-DD)	2014.07.13
V&V Edition	1
V&V Disposition and Status	OK
V&V Charge Time	11.069543240488

## A.2 Comments

Joint proposal with HST.