

V&V Reference Report

L2 ASCDS Version : 10.3

Observation 14220 - L2 Version 1
Chandra X-Ray Center

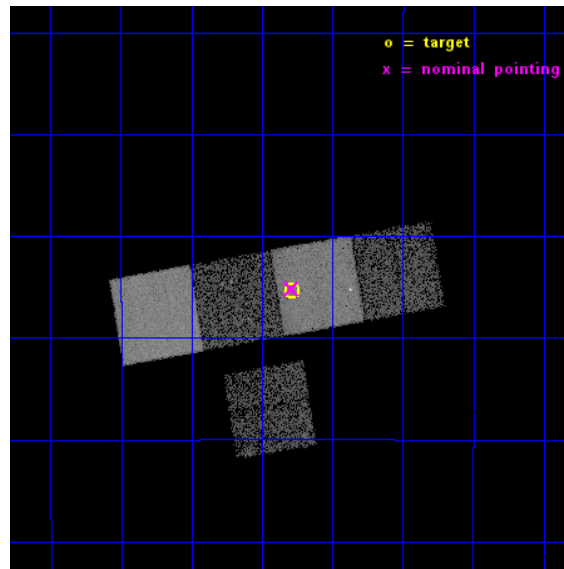
L2 Processing Date : Nov 26 2014

Contents

1	Front	2
2	OBI	3
2.1	OBI	3
2.1.1	Images	3
2.1.2	Bias	3
2.1.3	Parameters	4
2.1.4	Events	4
2.2	Compared Parameters	5
2.3	Aspect	6
2.4	Star Slots	9
2.4.1	Slot 3	9
2.4.2	Slot 4	10
2.4.3	Slot 5	11
2.4.4	Slot 6	12
2.4.5	Slot 7	13
2.5	FID Slots	14
2.5.1	Slot 0	14
2.5.2	Slot 1	15
2.5.3	Slot 2	16
A	Summary	17
A.1	Status	17
A.2	Comments	17

1 Front

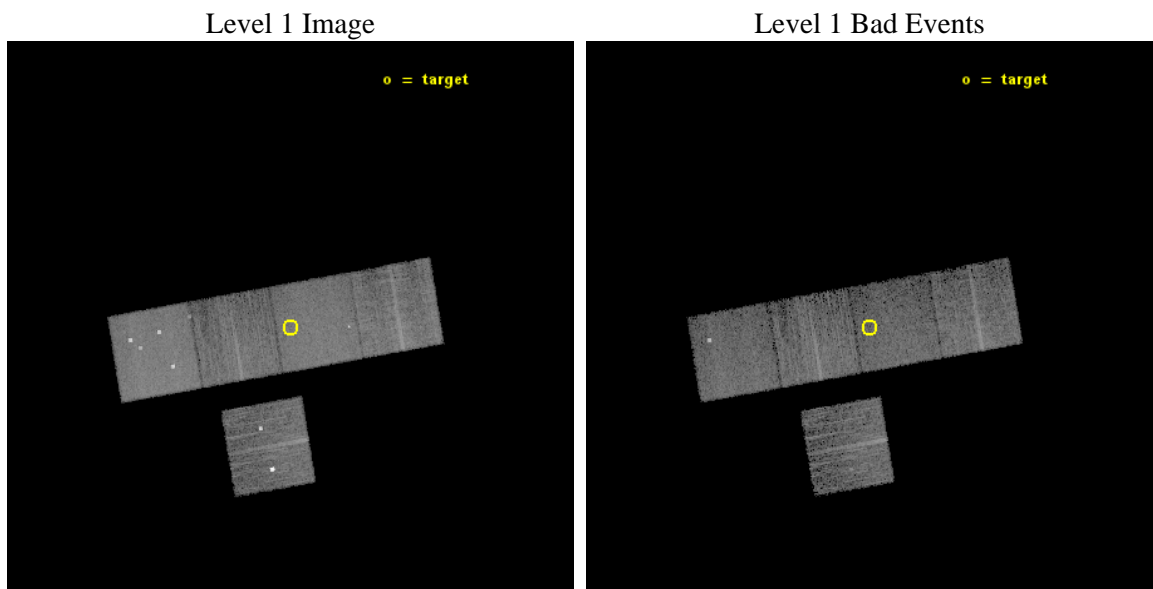
seq_num	702716	Sequence number
obs_id	14220	Observation id
title	Exploratory X-ray Monitoring of z>4 Radio-Quiet Quasars	Proposal t
observer	Prof. Ohad Shemmer	Principal investigator
object	BR 0351-1034	Source name
dtcycle	0	
cycle	P	events from which exps? Prim/Second/Both
ra_targ	58.445417	Observer's specified target RA [deg]
dec_targ	-10.421944	Observer's specified target Dec [deg]
ra_nom	58.447612914278	Nominal RA [deg]
dec_nom	-10.419641359875	Nominal Dec [deg]
roll_nom	350.15698493603	Nominal Roll [deg]
revision	1	Processing version of data
ontime	10059.477501392	Sum of GTIs [s]
livetime	9928.0430221571	Livetime [s]
ontime2	10059.313341379	Sum of GTIs [s]
ontime5	10059.436461389	Sum of GTIs [s]
ontime6	10059.395421386	Sum of GTIs [s]
ontime7	10059.477501392	Sum of GTIs [s]
ontime8	10059.354381382	Sum of GTIs [s]
l2events	86417	Number of level 2 events



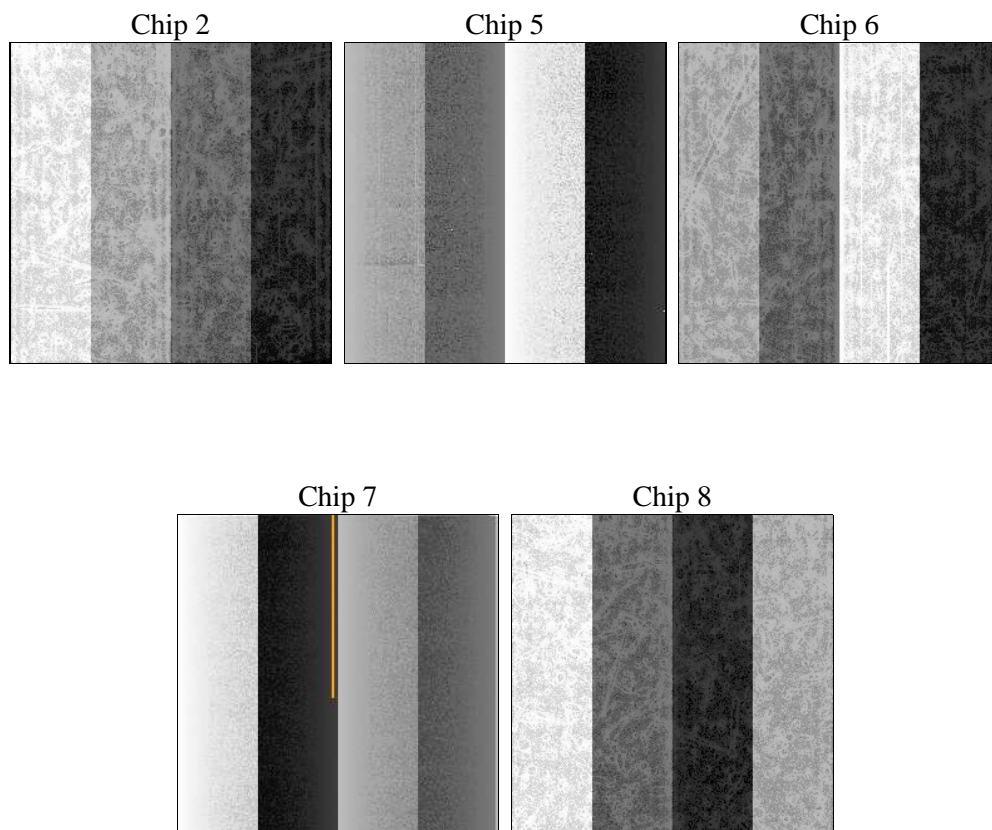
2 OBI

2.1 OBI

2.1.1 Images



2.1.2 Bias



2.1.3 Parameters

obi_num	0	Obi number	sched_exp_time	10000.000000	[s] Scheduled observation exposure time
ascdsver	10.3	Processing system revision	ontime	10059.477501392	Sum of GTIs [s]
caldbver	4.6.4	 	ontime2	10059.313341379	Sum of GTIs [s]
date	2014-11-26T17:44:21	Date and time of file creation	ontime5	10059.436461389	Sum of GTIs [s]
revision	1	Processing version of data	ontime6	10059.395421386	Sum of GTIs [s]
			ontime7	10059.477501392	Sum of GTIs [s]
			ontime8	10059.354381382	Sum of GTIs [s]
			l1events	366871	Number of level 1 events

2.1.4 Events

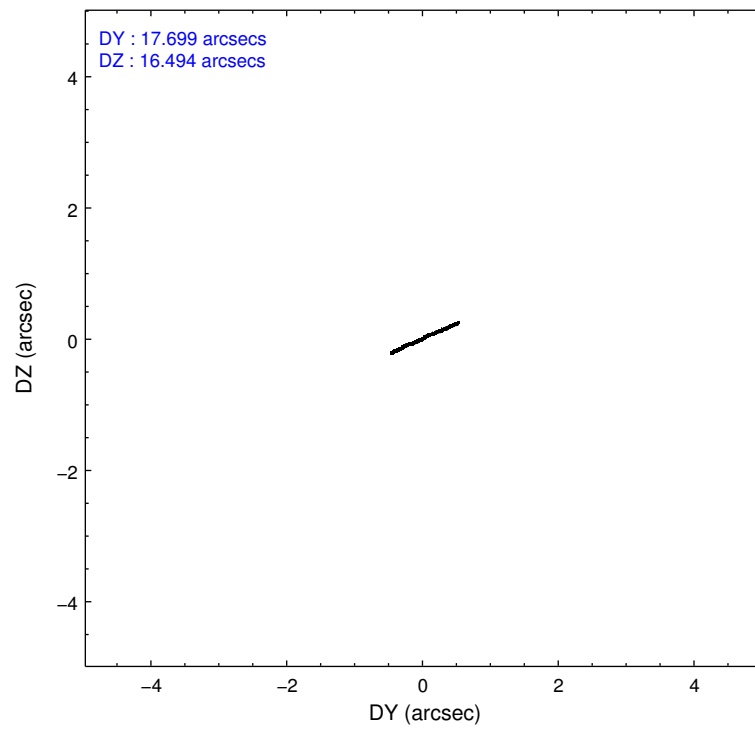
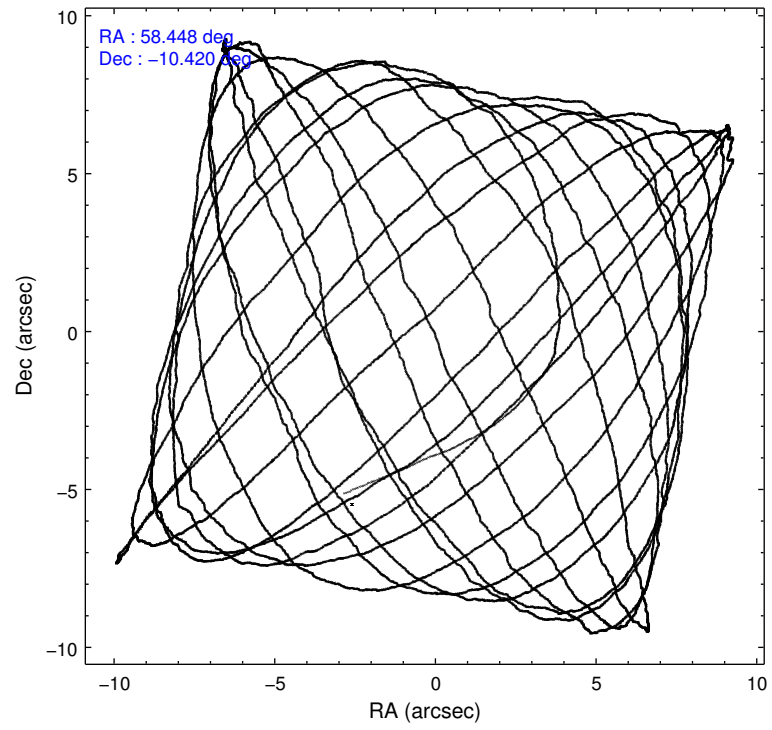
	ccd 2	ccd 5	ccd 6	ccd 7	ccd 8
level 1 events	68639	96710	58041	73475	70006
rejected events	47330	47753	51667	41536	52935
rejected %	68%	49%	89%	56%	75%

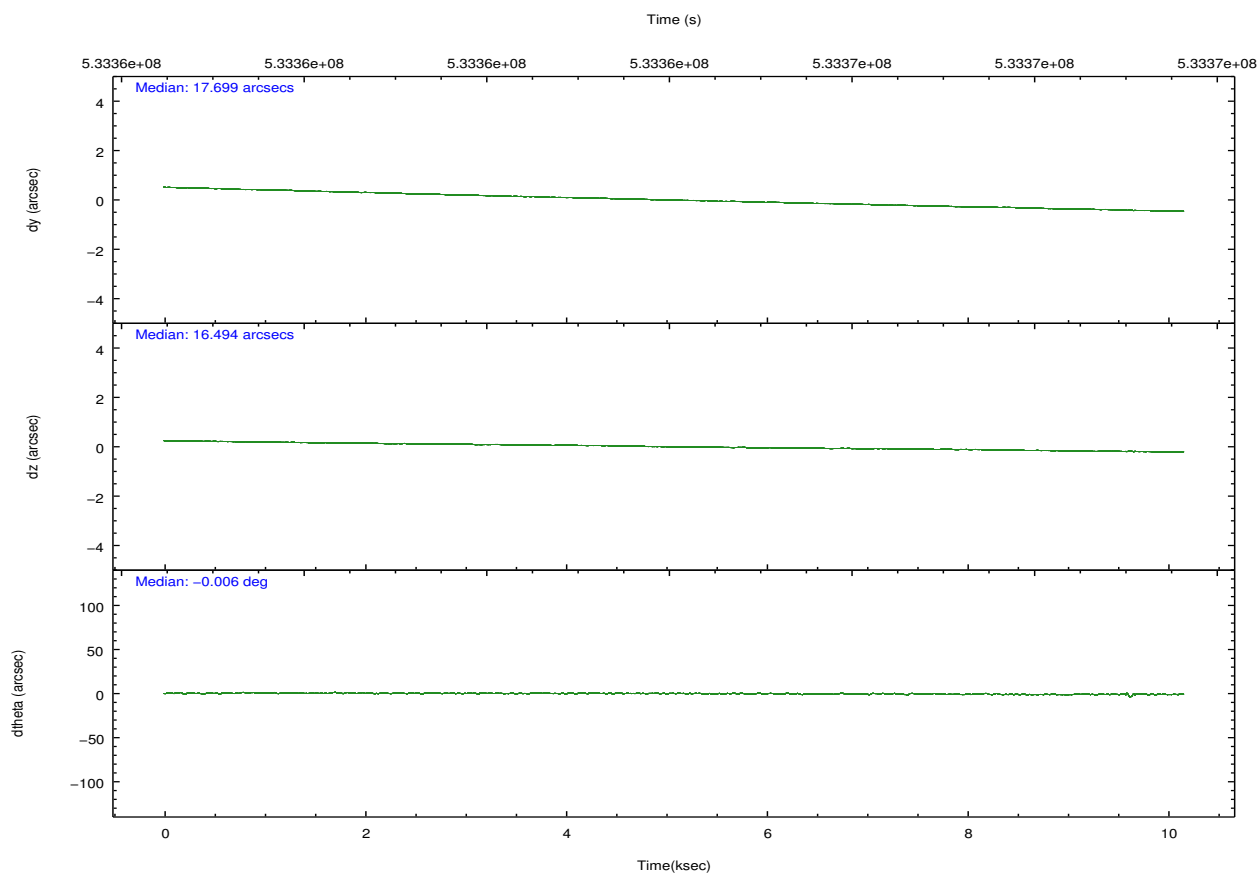
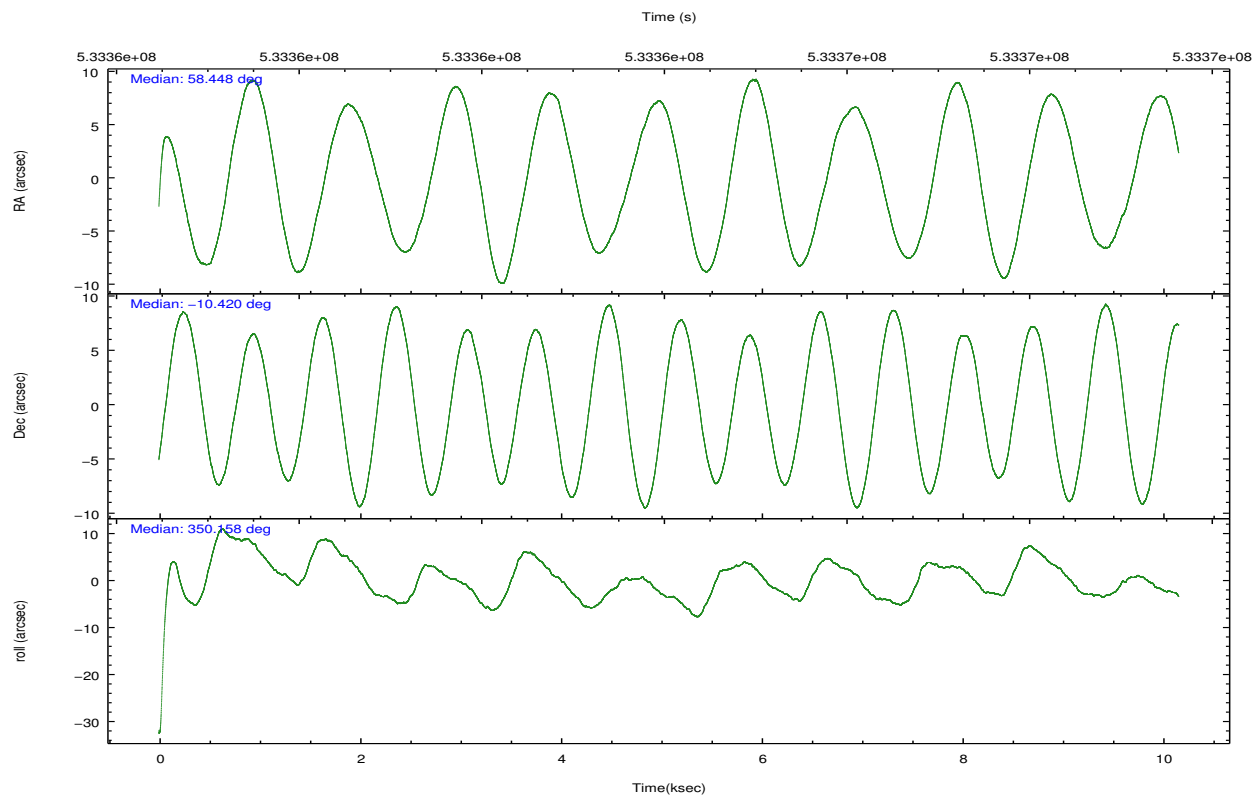
	ccd 2	ccd 5	ccd 6	ccd 7	ccd 8
grade 0 events	14446	9428	2126	2912	4633
	21%	9%	3%	3%	6%
grade 1 events	69	193	19	113	43
	0%	0%	0%	0%	0%
grade 2 events	4405	13735	1469	6714	4301
	6%	14%	2%	9%	6%
grade 3 events	635	1327	594	2480	1768
	0%	1%	1%	3%	2%
grade 4 events	625	1179	608	2411	1632
	0%	1%	1%	3%	2%
grade 5 events	2321	6570	2638	6961	4020
	3%	6%	4%	9%	5%
grade 6 events	1205	23302	1578	17436	4742
	1%	24%	2%	23%	6%
grade 7 events	44933	40976	49009	34448	48867
	65%	42%	84%	46%	69%

2.2 Compared Parameters

Parameter	Planned	Actual	Parameter	Planned	Actual
Instrument	ACIS	ACIS	Obspar format version number	7	7
Detector	ACIS-25678	ACIS-25678	Obspar file type	PREDICTED	ACTUAL
Grating	NONE	NONE	Obspar update status	NONE	UPDATED
Data mode	FAINT	FAINT	CCD I0 on	N	N
Observation mode	POINTING	POINTING	CCD I1 on	N	N
[deg] Pointing RA	58.421524	58.4476129142781	CCD I2 on	O2	Y
[deg] Pointing Dec	-10.429471	-10.41964135987459	CCD I3 on	O1	N
[deg] Pointing Roll	349.995676	350.1569849360279	CCD S0 on	N	N
[mm] SIM focus pos	-0.684267	-0.6828225247311905	CCD S1 on	O3	Y
[mm] SIM defocus	0	0.001444936568705701	CCD S2 on	Y	Y
[mm] SIM translation stage pos	-190.132523	-190.1400660498719	CCD S3 on	Y	Y
[mm] SIM translation stage offset	0	0.00754346686406393	CCD S4 on	Y	Y
[s] Observation start time (MET)	533359123.184000	533357692.65421	CCD S5 on	N	N
Observation start date	2014-11-26T03:17:36	2014-11-26T02:54:52	Number of optional ACIS chips dropped	1	1
[s] Observation end time (MET)	533369123.184000	533370175.10491	On-chip summing requested	N	N
Observation end date	2014-11-26T06:04:16	2014-11-26T06:22:55	Subarray requested	NONE	NONE
Read mode	TIMED	TIMED	Alternating exposures requested	N	N
			[s] Primary exposure time	0.000000	3.1

2.3 Aspect



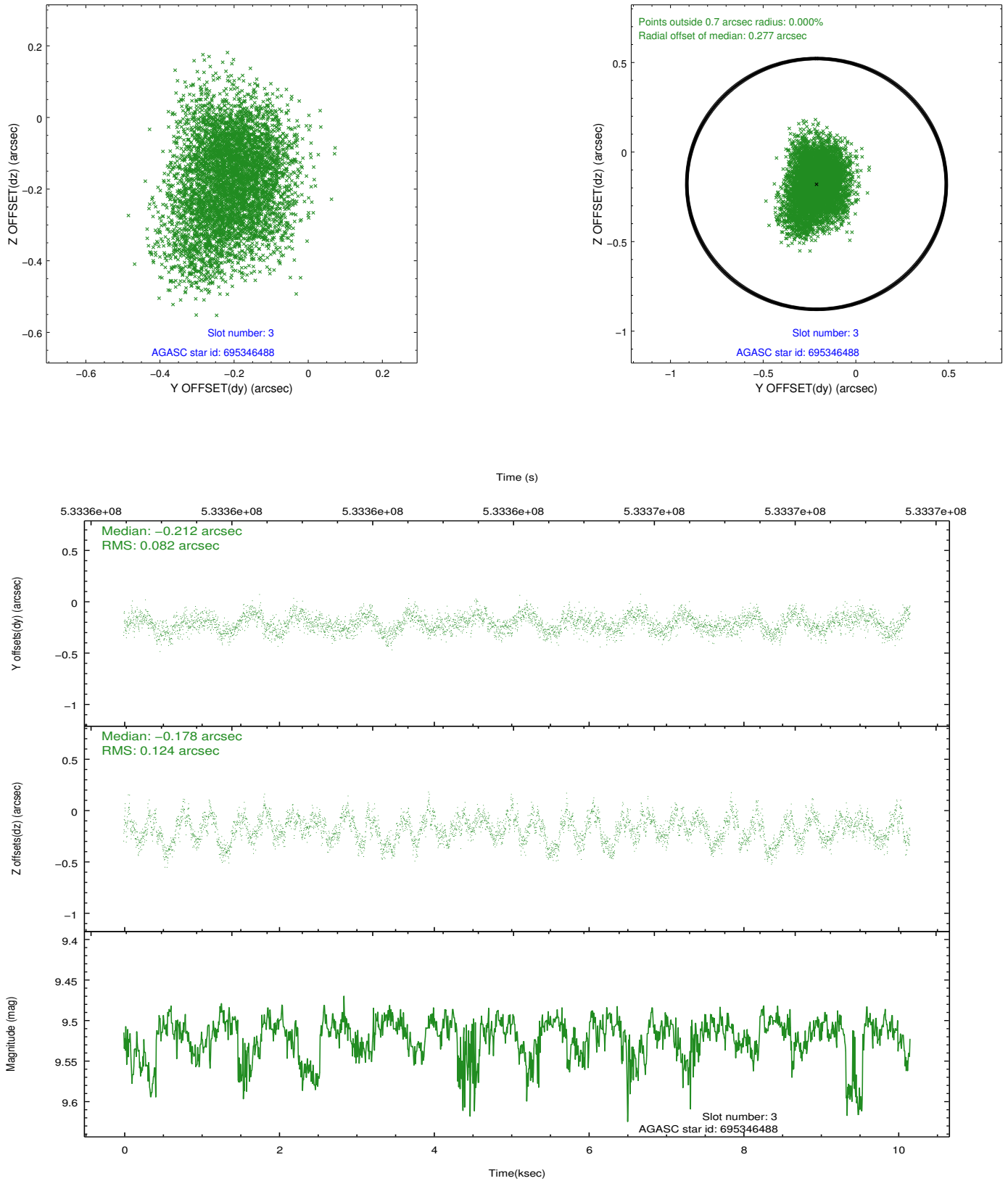


Slot Statistics

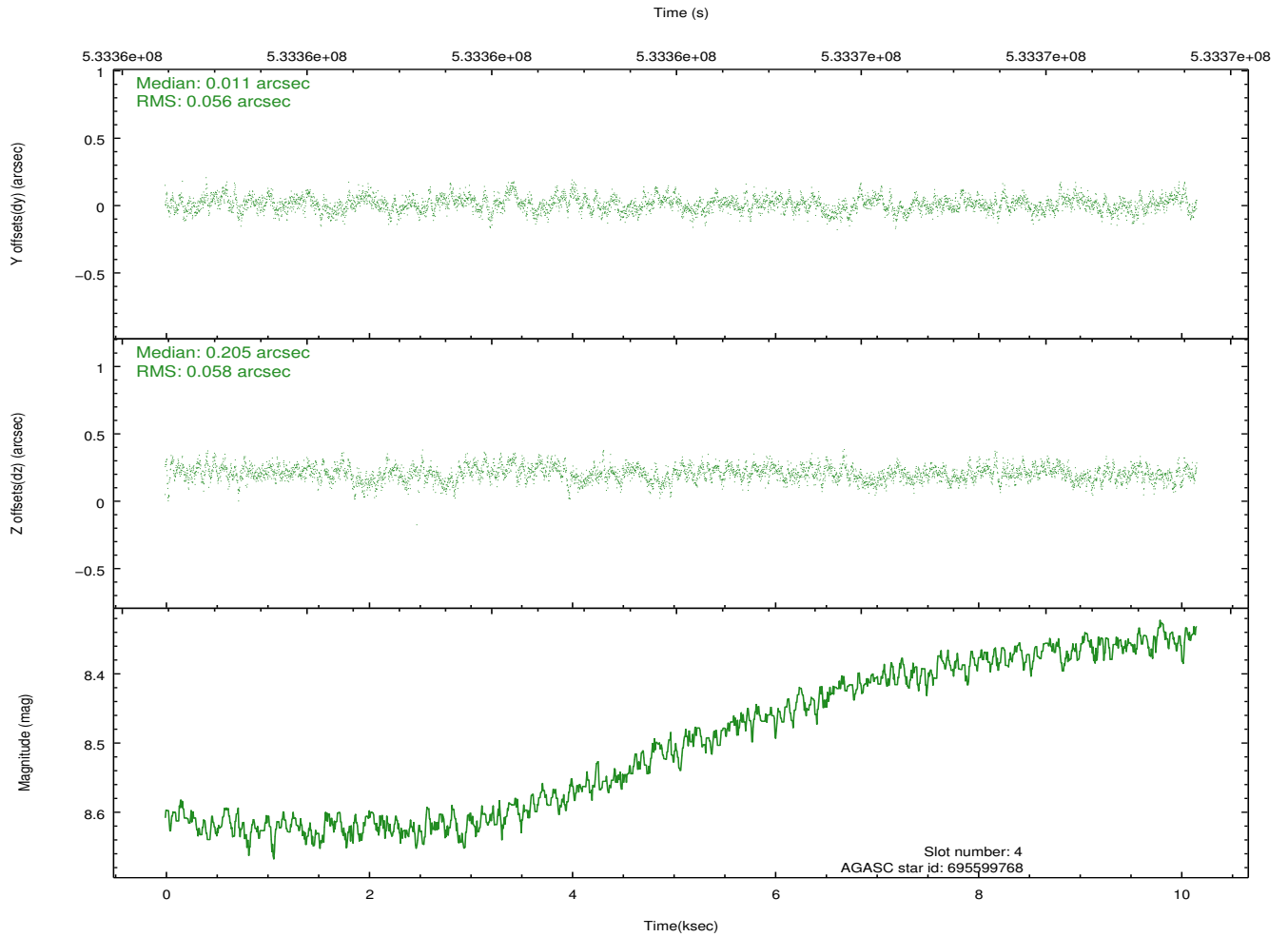
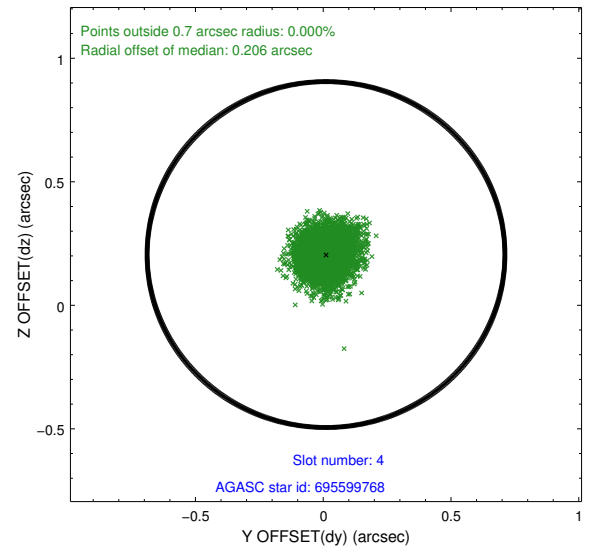
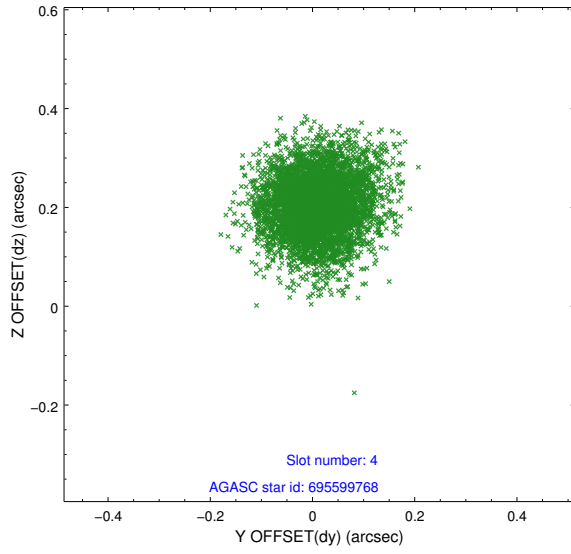
slot	status	used	id	mag	n_pts	med_dy	med_dz	dr1	dr2	ra	dec	mean_y	mean_z
0	FID		ACIS-S-1	7.20	2478	0.078	-0.090	0.012	0.019	0.000000	0.000000	925.38	-1733.63
1	FID		ACIS-S-4	7.20	2478	0.205	0.030	0.011	0.019	0.000000	0.000000	2143.18	170.12
2	FID		ACIS-S-5	7.23	2478	-0.310	0.073	0.017	0.027	0.000000	0.000000	-1823.24	164.30
3	GUIDE	used	695346488	9.52	4956	-0.212	-0.178	0.158	0.258	58.999951	-9.982646	1740.79	1938.21
4	GUIDE	used	695599768	8.50	4950	0.011	0.205	0.086	0.141	57.972264	-10.530423	-1502.32	-636.71
5	GUIDE	used	695604392	9.29	4950	0.206	0.094	0.163	0.255	58.154149	-10.872582	-653.98	-1735.42
6	GUIDE	used	695736200	8.98	4954	0.177	0.072	0.121	0.189	58.904941	-10.536646	1752.44	-84.32
7	GUIDE	used	695738664	9.17	4953	-0.185	-0.175	0.118	0.192	59.003553	-10.335305	1971.87	690.15

2.4 Star Slots

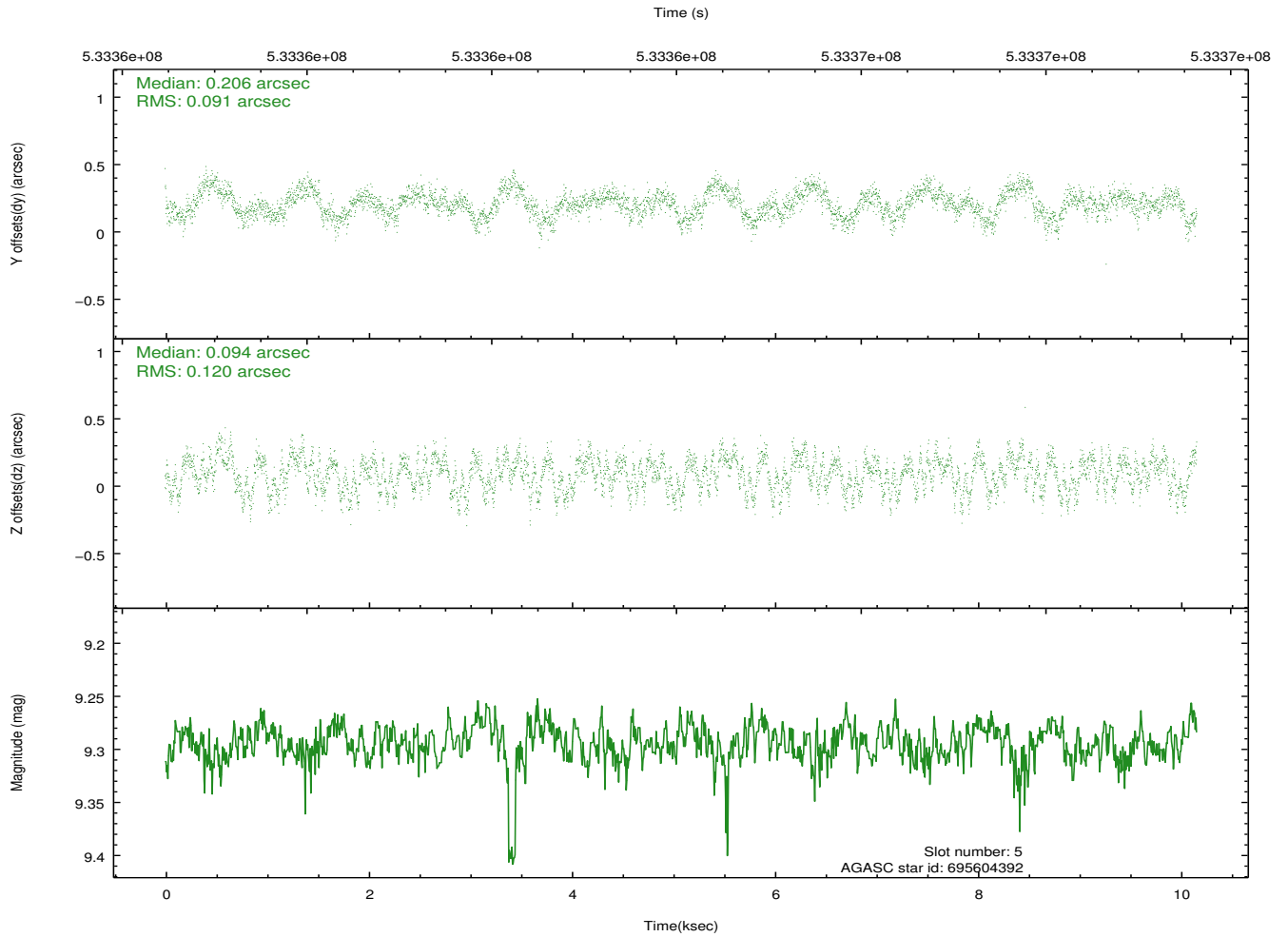
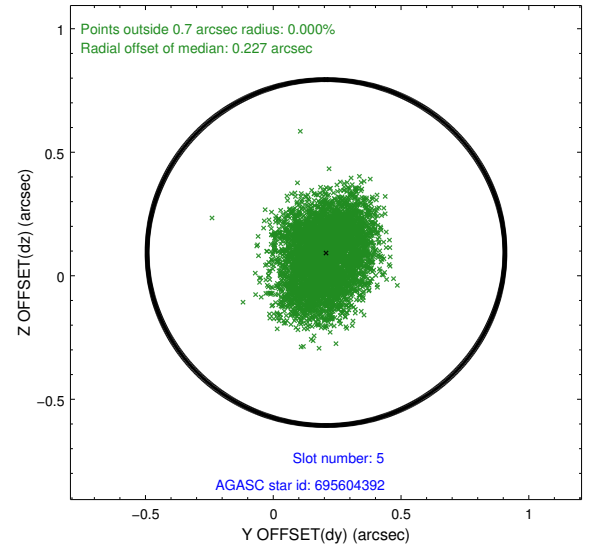
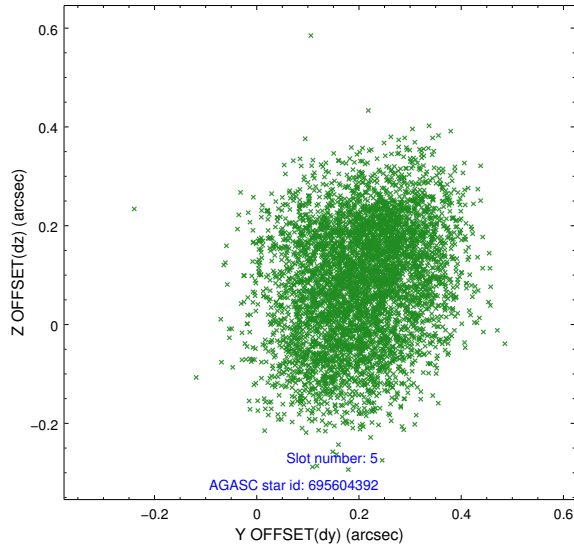
2.4.1 Slot 3



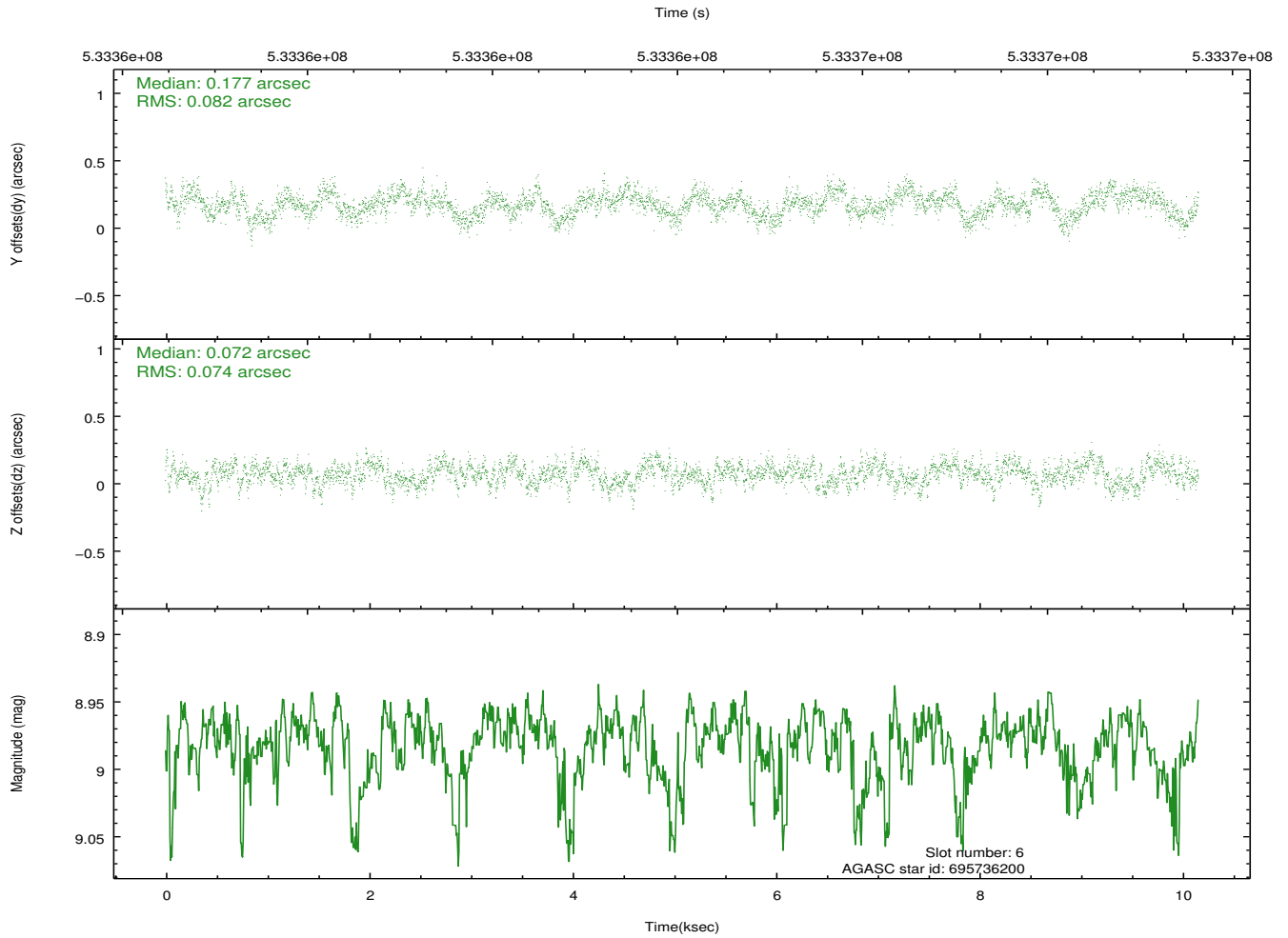
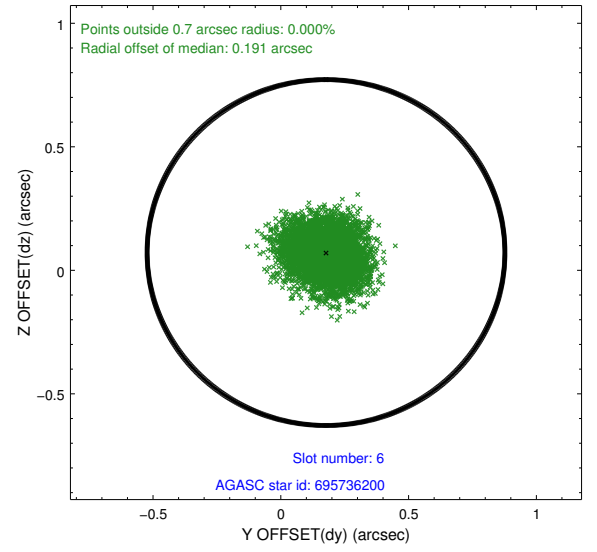
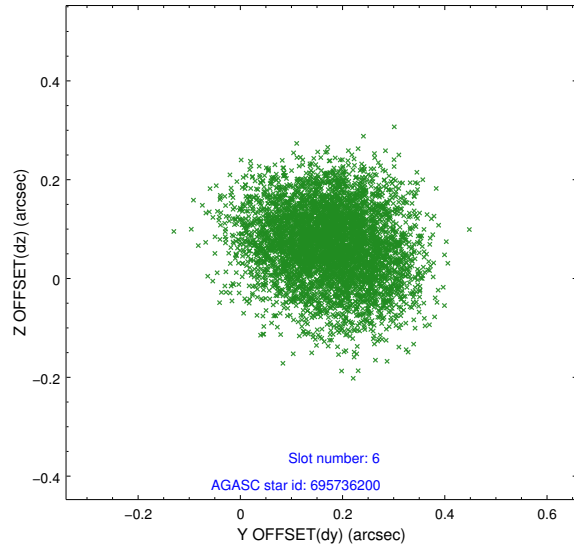
2.4.2 Slot 4



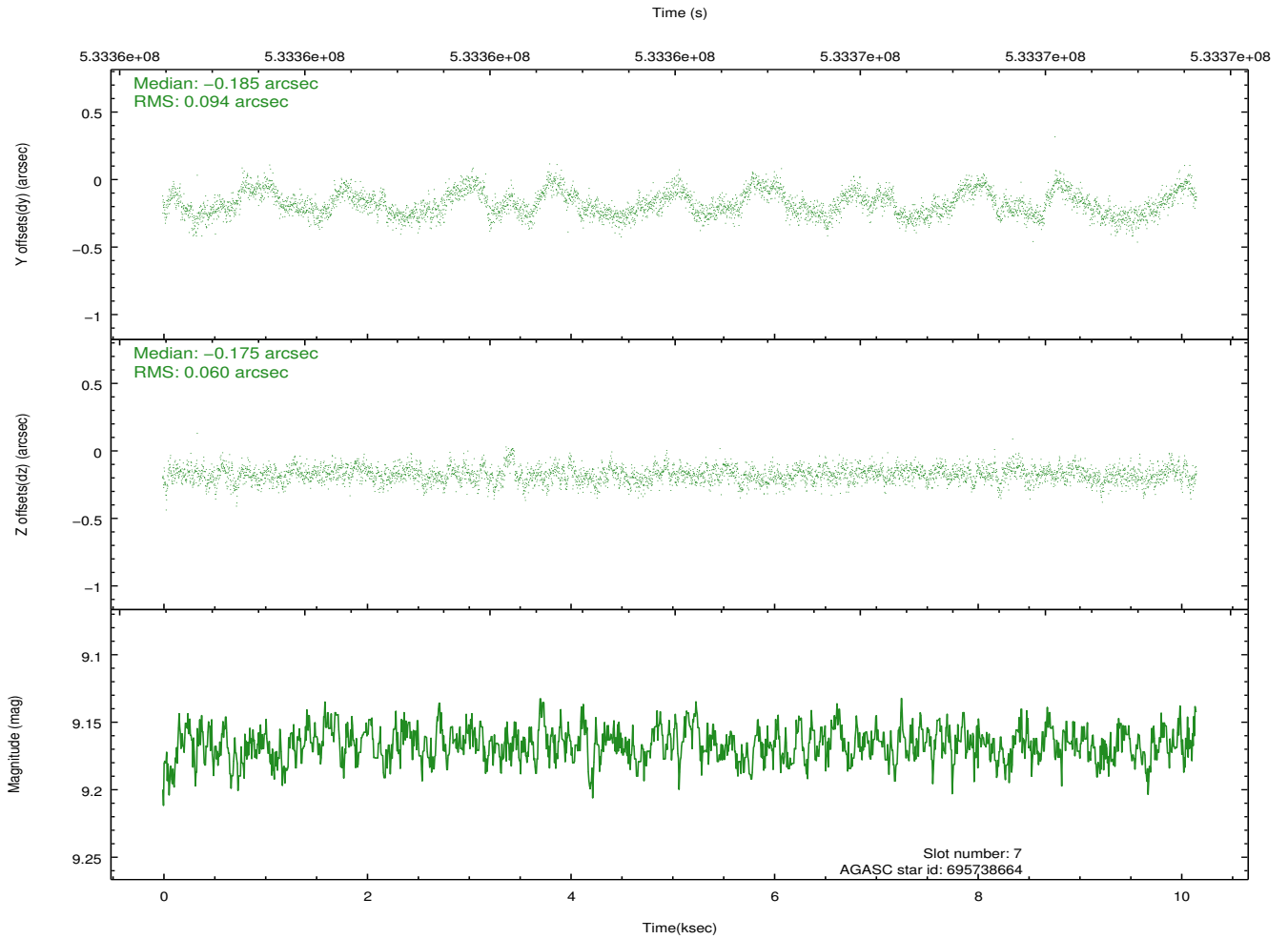
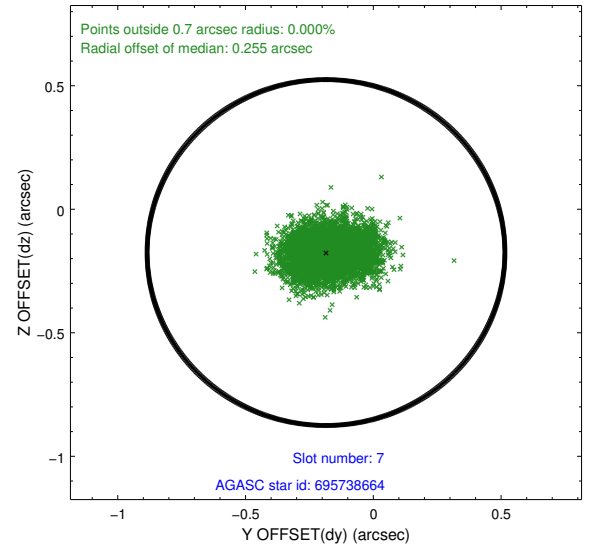
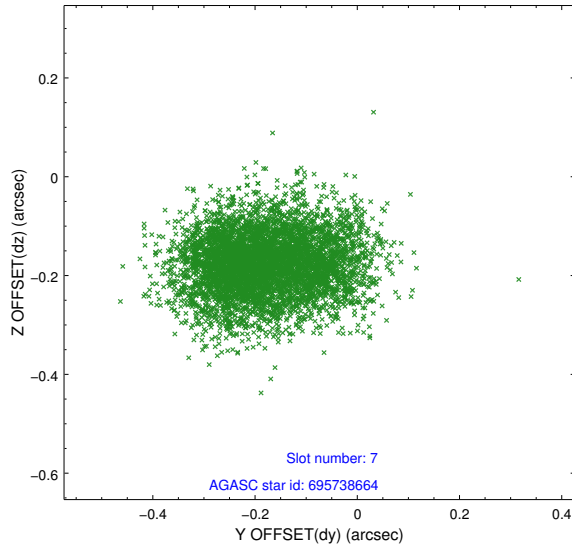
2.4.3 Slot 5



2.4.4 Slot 6

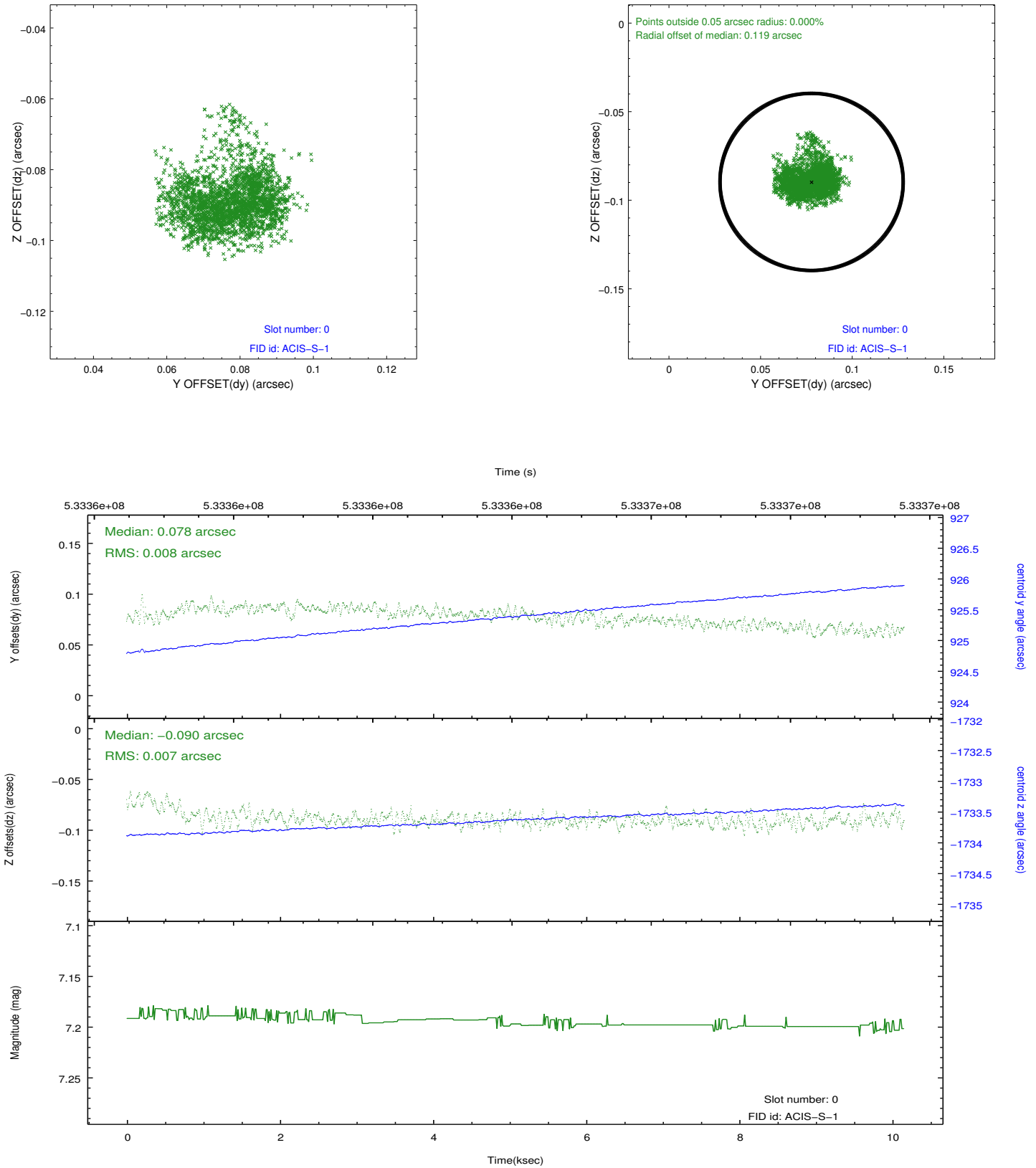


2.4.5 Slot 7

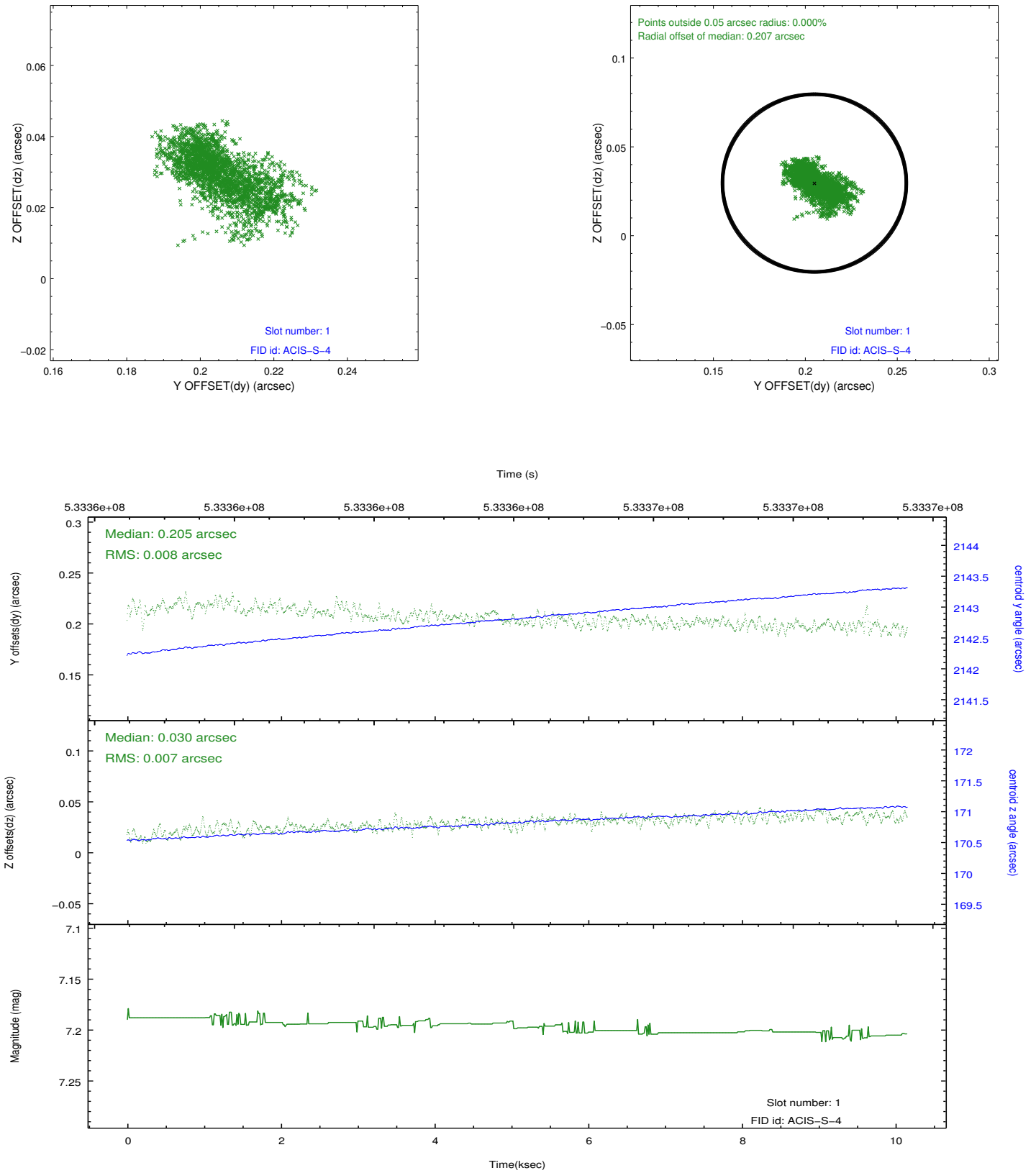


2.5 FID Slots

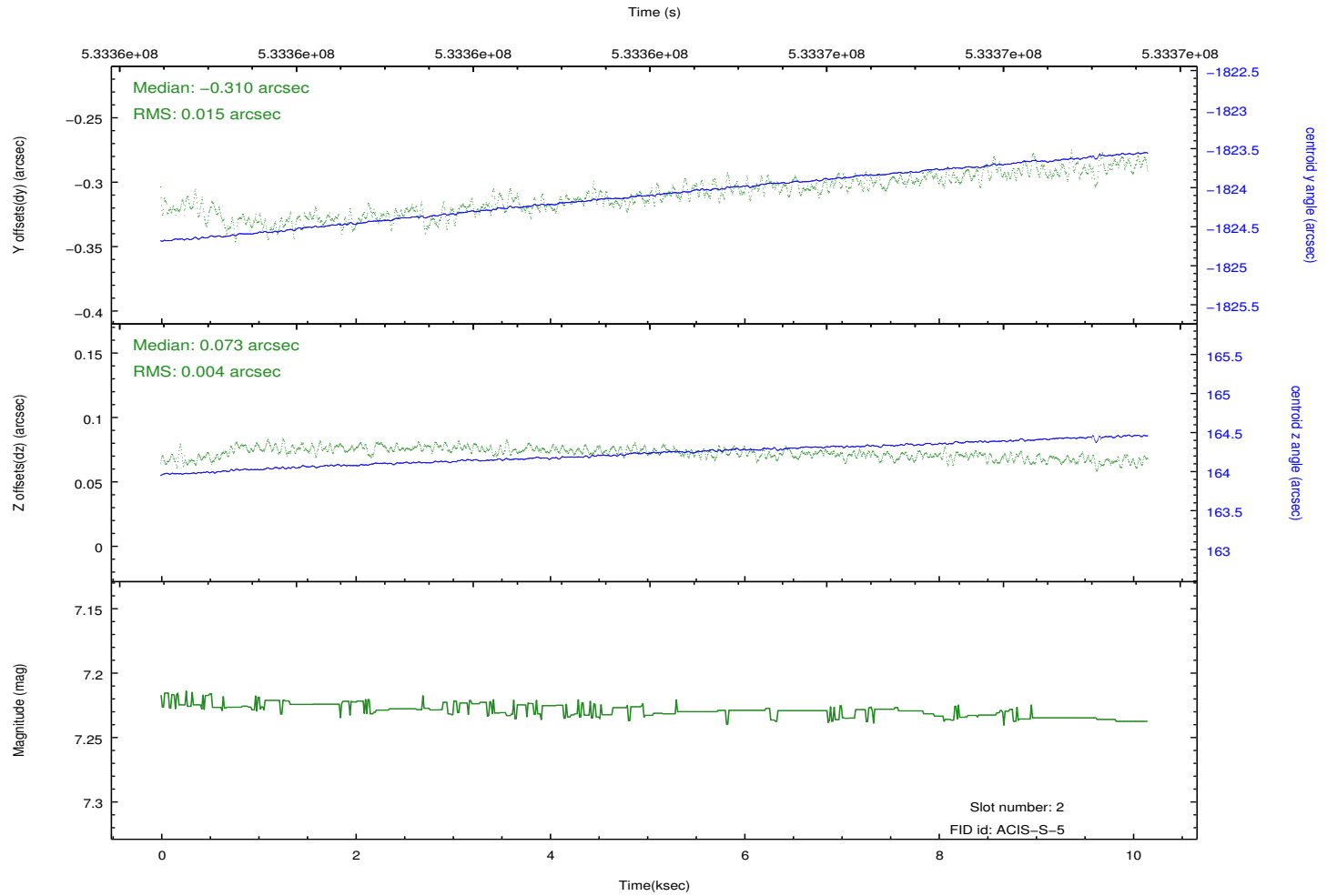
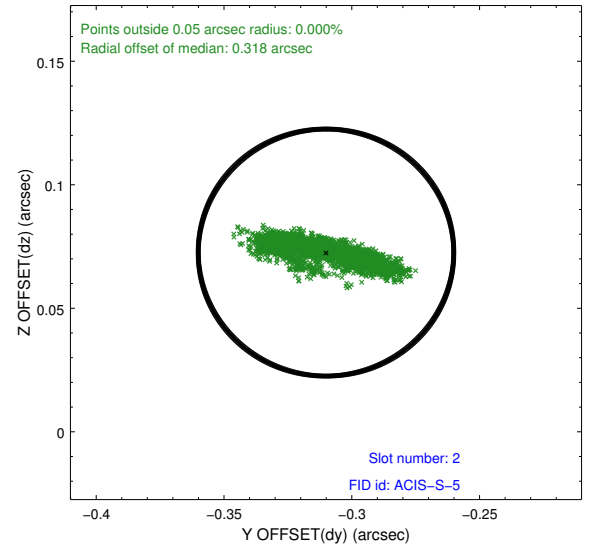
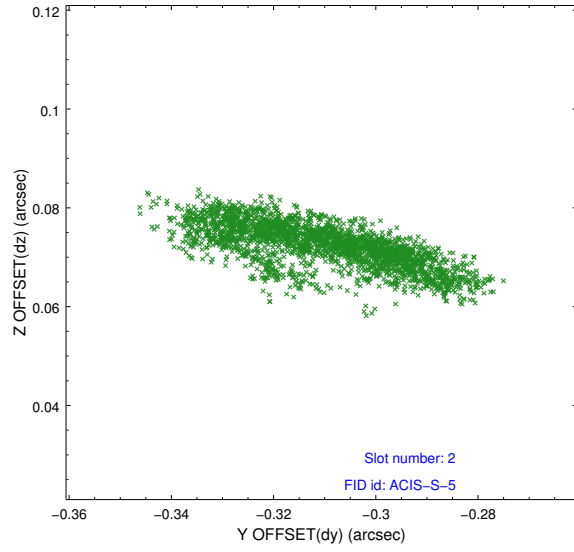
2.5.1 Slot 0



2.5.2 Slot 1



2.5.3 Slot 2



A Summary

A.1 Status

V&V Scientist	Beth Sundheim
V&V Date (YYYY-MM-DD)	2014.11.26
V&V Edition	1
V&V Disposition and Status	OK
V&V Charge Time	10.059477501392

A.2 Comments