

# V&V Reference Report

## L2 ASCDS Version : 10.2.4

Observation 16477 - L2 Version 1  
Chandra X-Ray Center

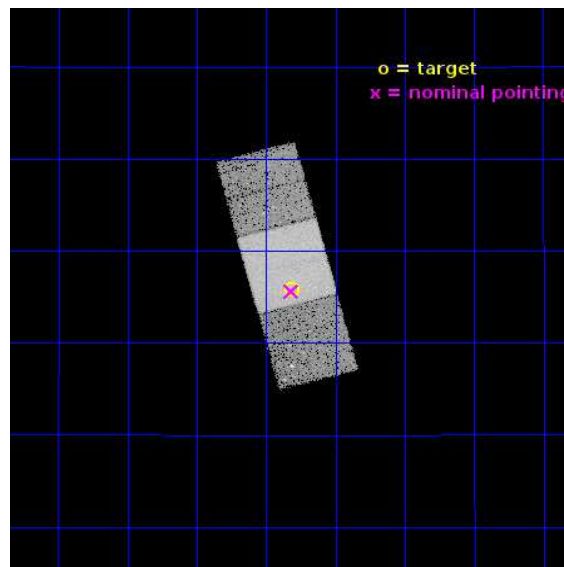
L2 Processing Date : Jul 23 2014

## Contents

<b>1</b>	<b>Front</b>	<b>2</b>
<b>2</b>	<b>OBI</b>	<b>3</b>
2.1	OBI . . . . .	3
2.1.1	Images . . . . .	3
2.1.2	Bias . . . . .	3
2.1.3	Parameters . . . . .	4
2.1.4	Events . . . . .	4
2.2	Compared Parameters . . . . .	5
2.3	Aspect . . . . .	6
2.4	Star Slots . . . . .	9
2.4.1	Slot 3 . . . . .	9
2.4.2	Slot 4 . . . . .	10
2.4.3	Slot 5 . . . . .	11
2.4.4	Slot 6 . . . . .	12
2.4.5	Slot 7 . . . . .	13
2.5	FID Slots . . . . .	14
2.5.1	Slot 0 . . . . .	14
2.5.2	Slot 1 . . . . .	15
2.5.3	Slot 2 . . . . .	16
<b>A</b>	<b>Summary</b>	<b>17</b>
A.1	Status . . . . .	17
A.2	Comments . . . . .	17

# 1 Front

seq_num	401580	Sequence number
obs_id	16477	Observation id
title	CXOU J122518.6+144545: Type II <sub>n</sub> supernova or hyperluminous X-ray source?	Proposal title
observer	Ms Marianne Heida	Principal investigator
object	CXOU J122518.6+144545	Source name
dtcycle	0	&#160
cycle	P	events from which exps? Prim/Second/Both
ra_targ	186.3275	Observer's specified target RA [deg]
dec_targ	14.762694	Observer's specified target Dec [deg]
ra_nom	186.32960403606	Nominal RA [deg]
dec_nom	14.760365017284	Nominal Dec [deg]
roll_nom	254.93205509851	Nominal Roll [deg]
revision	1	Processing version of data
ontime	20115.90015471	Sum of GTIs [s]
livetime	19853.071110078	Livetime [s]
ontime6	20115.90015471	Sum of GTIs [s]
ontime7	20115.90015471	Sum of GTIs [s]
ontime8	20106.477243721	Sum of GTIs [s]
l2events	81673	Number of level 2 events

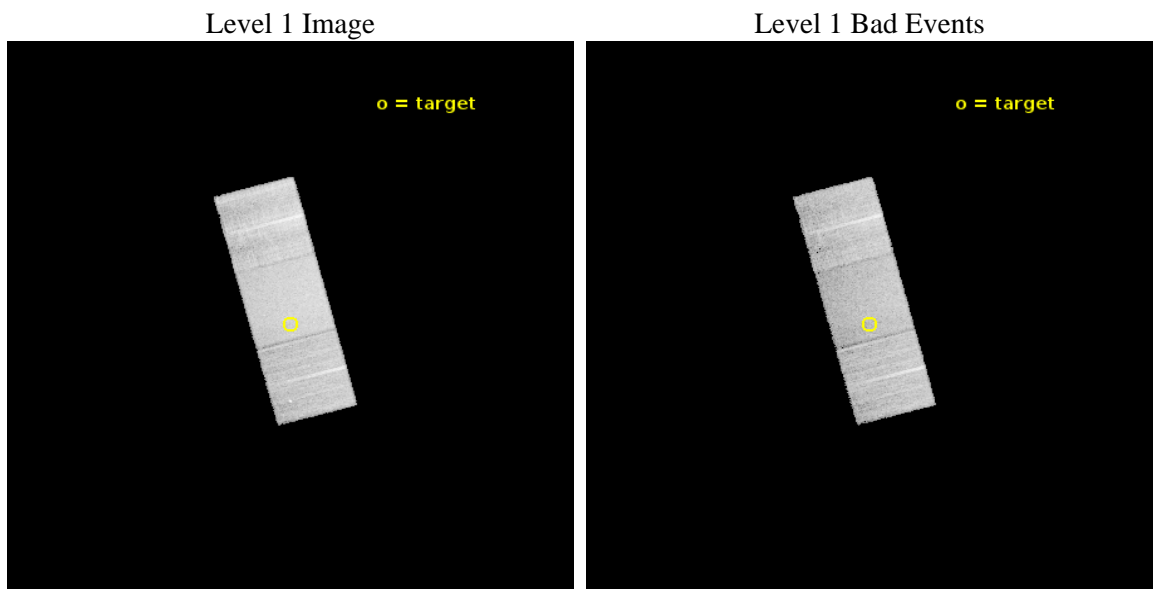




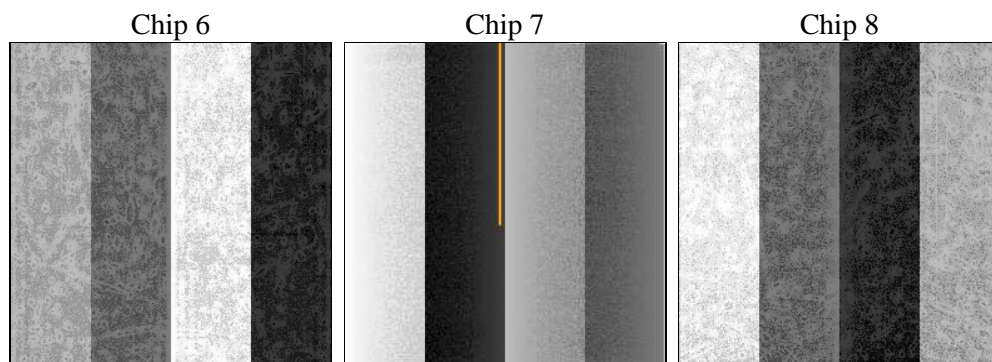
## 2 OBI

### 2.1 OBI

#### 2.1.1 Images



#### 2.1.2 Bias



### 2.1.3 Parameters

obi_num	0	Obi number	sched_exp_time	20000.000000	[s] Scheduled observation exposure time
ascdsver	10.2.4	Processing system revision	ontime	20115.90015471	Sum of GTIs [s]
caldbver	4.6.2	&#160	ontime6	20115.90015471	Sum of GTIs [s]
date	2014-07-23T06:06:55	Date and time of file creation	ontime7	20115.90015471	Sum of GTIs [s]
revision	1	Processing version of data	ontime8	20106.477243721	Sum of GTIs [s]
			l1events	361219	Number of level 1 events

### 2.1.4 Events

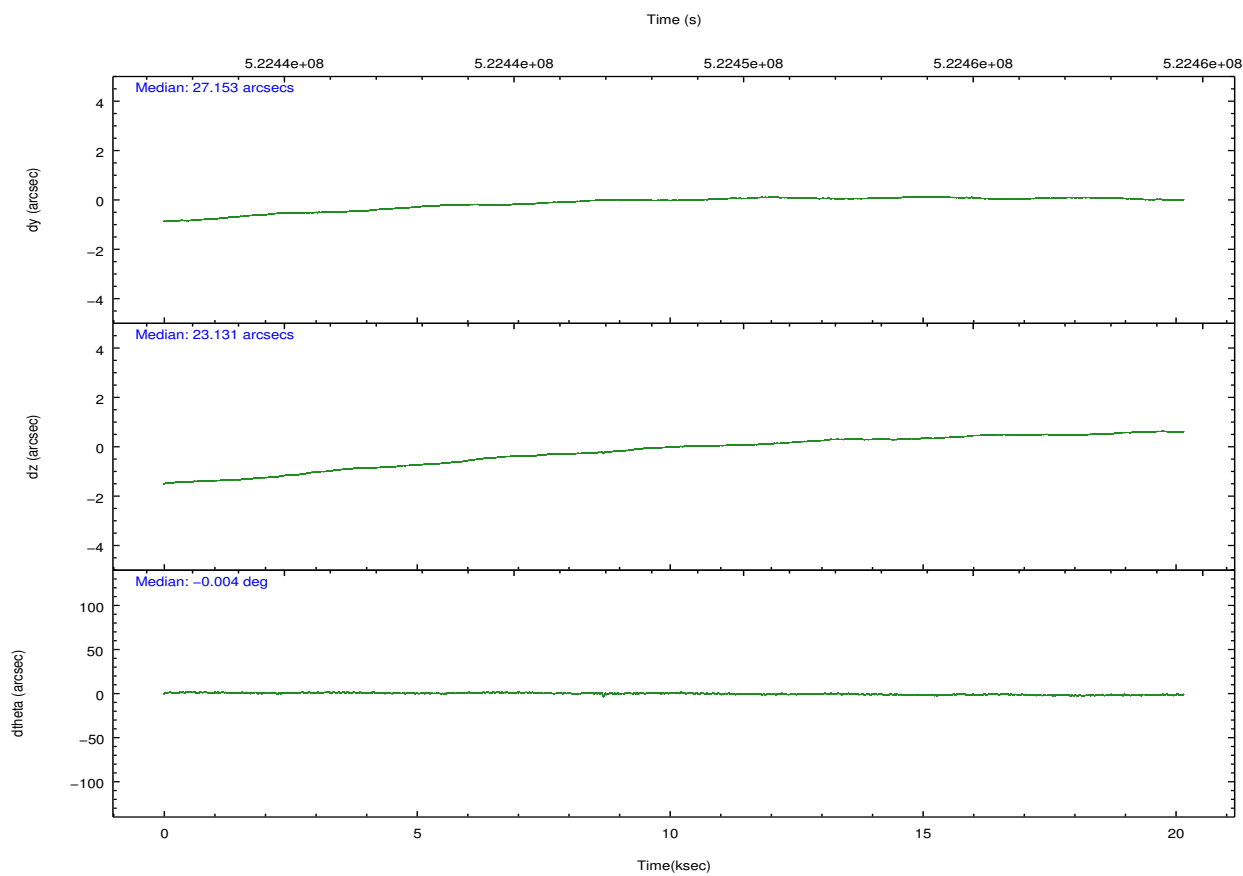
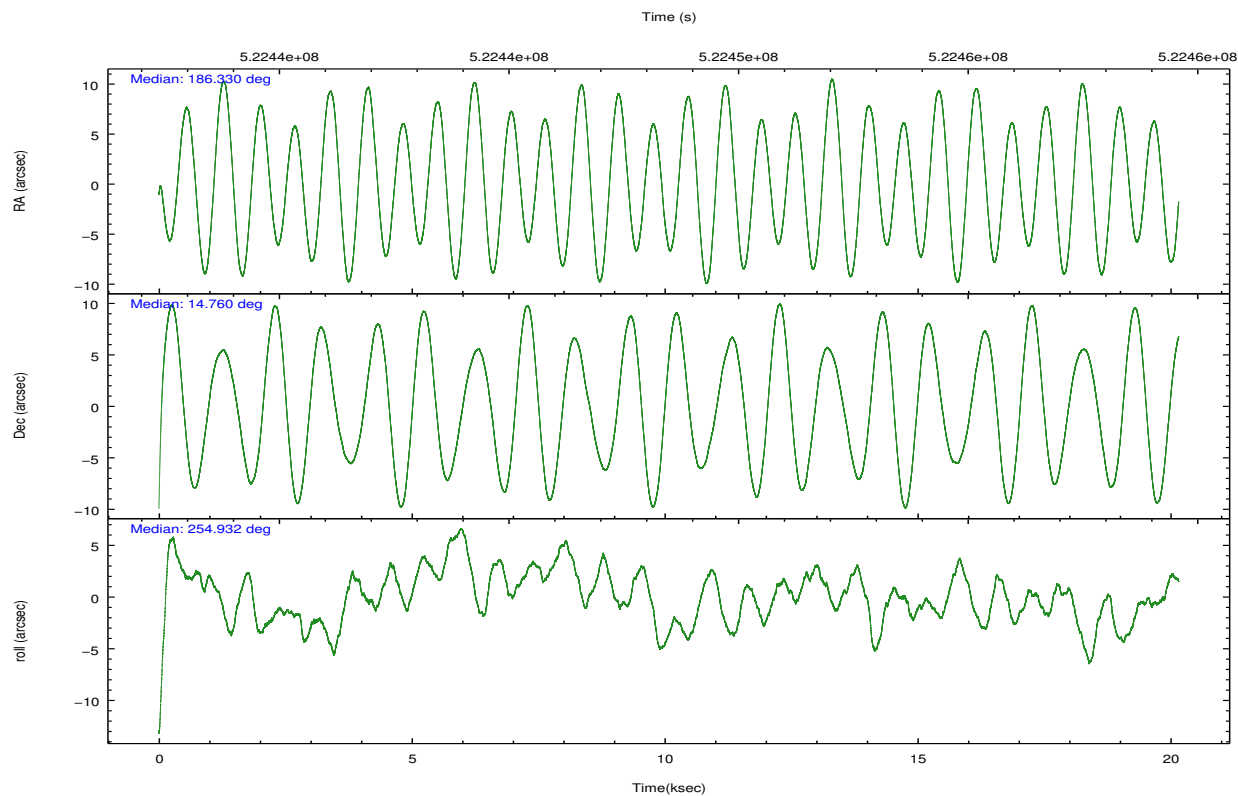
	<b>ccd 6</b>	<b>ccd 7</b>	<b>ccd 8</b>
level 1 events	99087	132577	129555
rejected events	86226	73786	94620
rejected %	87%	55%	73%

	<b>ccd 6</b>	<b>ccd 7</b>	<b>ccd 8</b>
grade 0 events	4713	5281	10739
	4%	3%	8%
grade 1 events	54	156	103
	0%	0%	0%
grade 2 events	2735	12053	8098
	2%	9%	6%
grade 3 events	1254	4945	3631
	1%	3%	2%
grade 4 events	1247	5072	3405
	1%	3%	2%
grade 5 events	5198	13525	7437
	5%	10%	5%
grade 6 events	2912	31446	9065
	2%	23%	6%
grade 7 events	80974	60099	87077
	81%	45%	67%

## 2.2 Compared Parameters

Parameter	Planned	Actual	Parameter	Planned	Actual
Instrument	ACIS	ACIS	Obspar format version number	7	7
Detector	ACIS-678	ACIS-678	Obspar file type	PREDICTED	ACTUAL
Grating	NONE	NONE	Obspar update status	NONE	UPDATED
Data mode	VFAINT	VFAINT	CCD I0 on	N	N
Observation mode	POINTING	POINTING	CCD I1 on	N	N
[deg] Pointing RA	186.321951	186.3296040360565	CCD I2 on	N	N
[deg] Pointing Dec	14.786776	14.76036501728361	CCD I3 on	N	N
[deg] Pointing Roll	254.777384	254.9320550985113	CCD S0 on	N	N
[mm] SIM focus pos	-0.684267	-0.6828225247311905	CCD S1 on	N	N
[mm] SIM defocus	0	0.001444936568705701	CCD S2 on	O2	Y
[mm] SIM translation stage pos	-190.132523	-190.1425803651734	CCD S3 on	Y	Y
[mm] SIM translation stage offset	0	0.01005778216563158	CCD S4 on	O1	Y
[s] Observation start time (MET)	522438550.184000	522437096.56025	CCD S5 on	N	N
Observation start date	2014-07-22T17:48:03	2014-07-22T17:24:56	Number of optional ACIS chips dropped	0	0
[s] Observation end time (MET)	522458550.184000	522459486.1489	On-chip summing requested	N	N
Observation end date	2014-07-22T23:21:23	2014-07-22T23:38:06	Subarray requested	NONE	NONE
Read mode	TIMED	TIMED	Alternating exposures requested	N	N
			[s] Primary exposure time	0.000000	3.1

## 2.3 Aspect

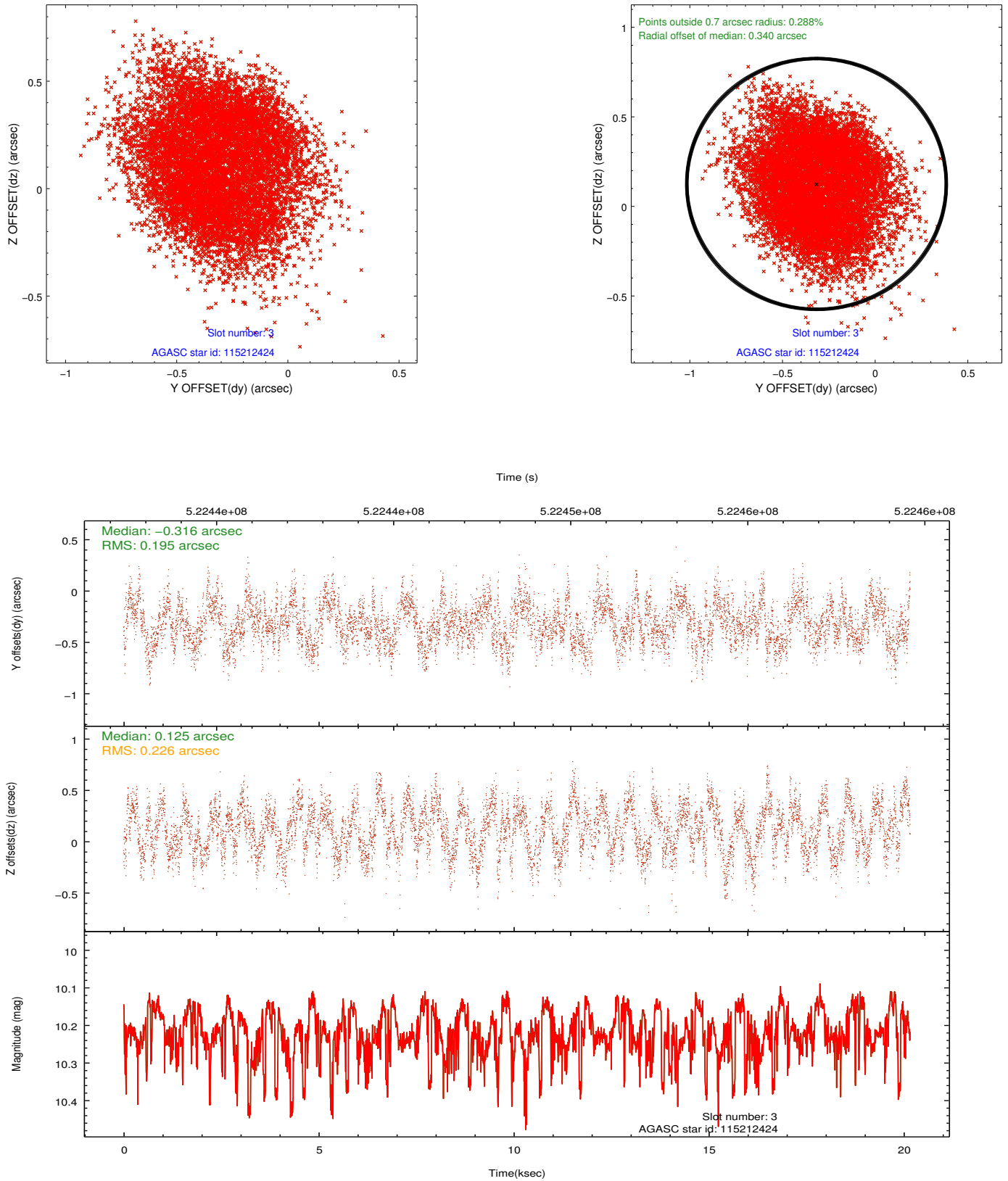


### Slot Statistics

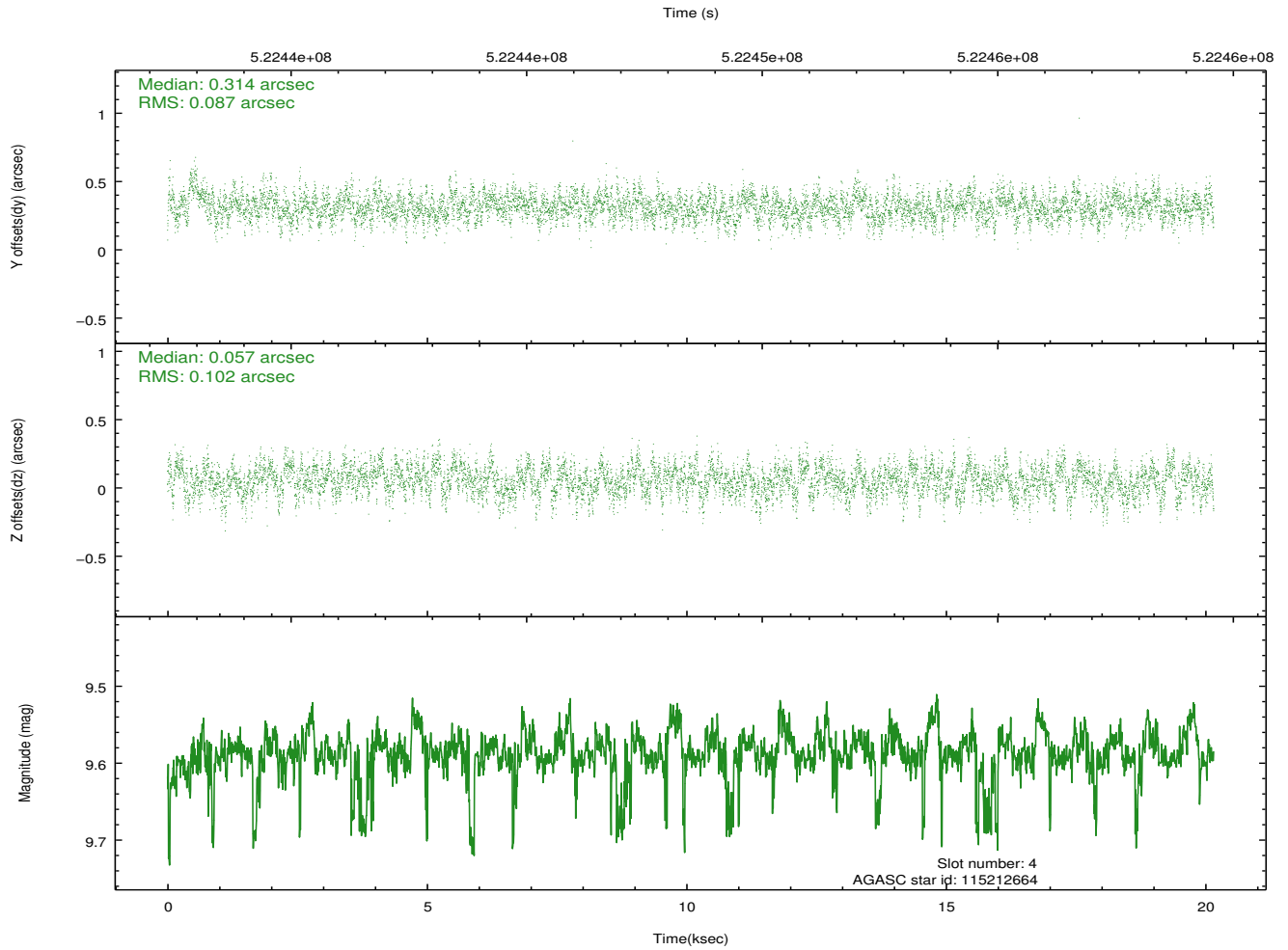
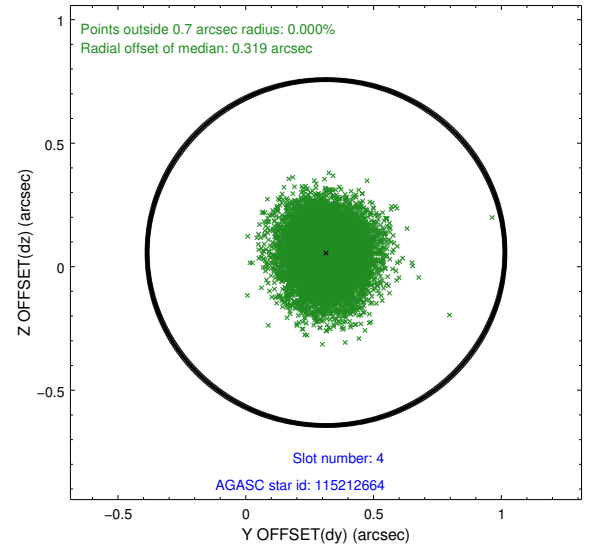
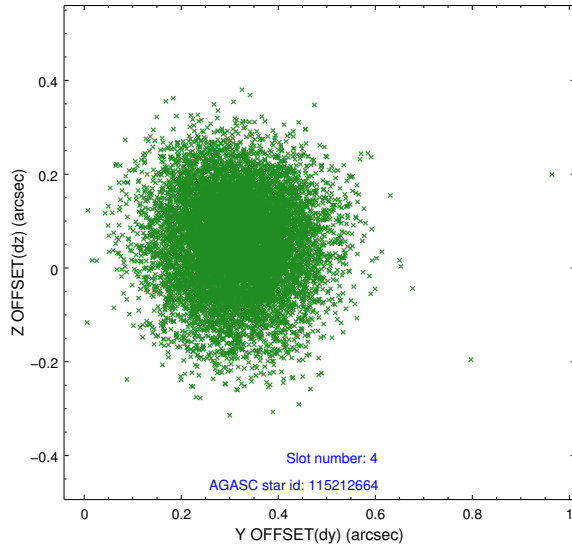
slot	status	id	mag	n_pts	med_dy	med_dz	dr1	dr2	ra	dec	mean_y	mean_z
0	FID	ACIS-S-2	6.93	4916	-0.154	-0.033	0.014	0.026	0.000000	0.000000	-780.47	-1744.50
1	FID	ACIS-S-4	7.02	4917	0.328	0.084	0.018	0.032	0.000000	0.000000	2133.20	163.89
2	FID	ACIS-S-5	7.06	4917	-0.201	-0.043	0.012	0.027	0.000000	0.000000	-1833.12	157.65
3	BAD	115212424	10.22	9381	-0.316	0.125	0.321	0.489	185.550153	14.370787	2148.68	-2205.12
4	GUIDE	115212664	9.59	9819	0.314	0.057	0.143	0.232	186.112214	14.500161	1189.35	-434.66
5	GUIDE	115344416	7.89	9833	-0.016	-0.088	0.108	0.173	186.624628	14.572004	468.81	1220.07
6	GUIDE	115349328	8.74	9825	0.057	0.012	0.087	0.140	186.721628	14.043786	2213.94	2049.30
7	GUIDE	189399064	8.57	9832	-0.063	-0.086	0.136	0.215	187.048930	15.252486	-2284.60	1995.92

## 2.4 Star Slots

### 2.4.1 Slot 3

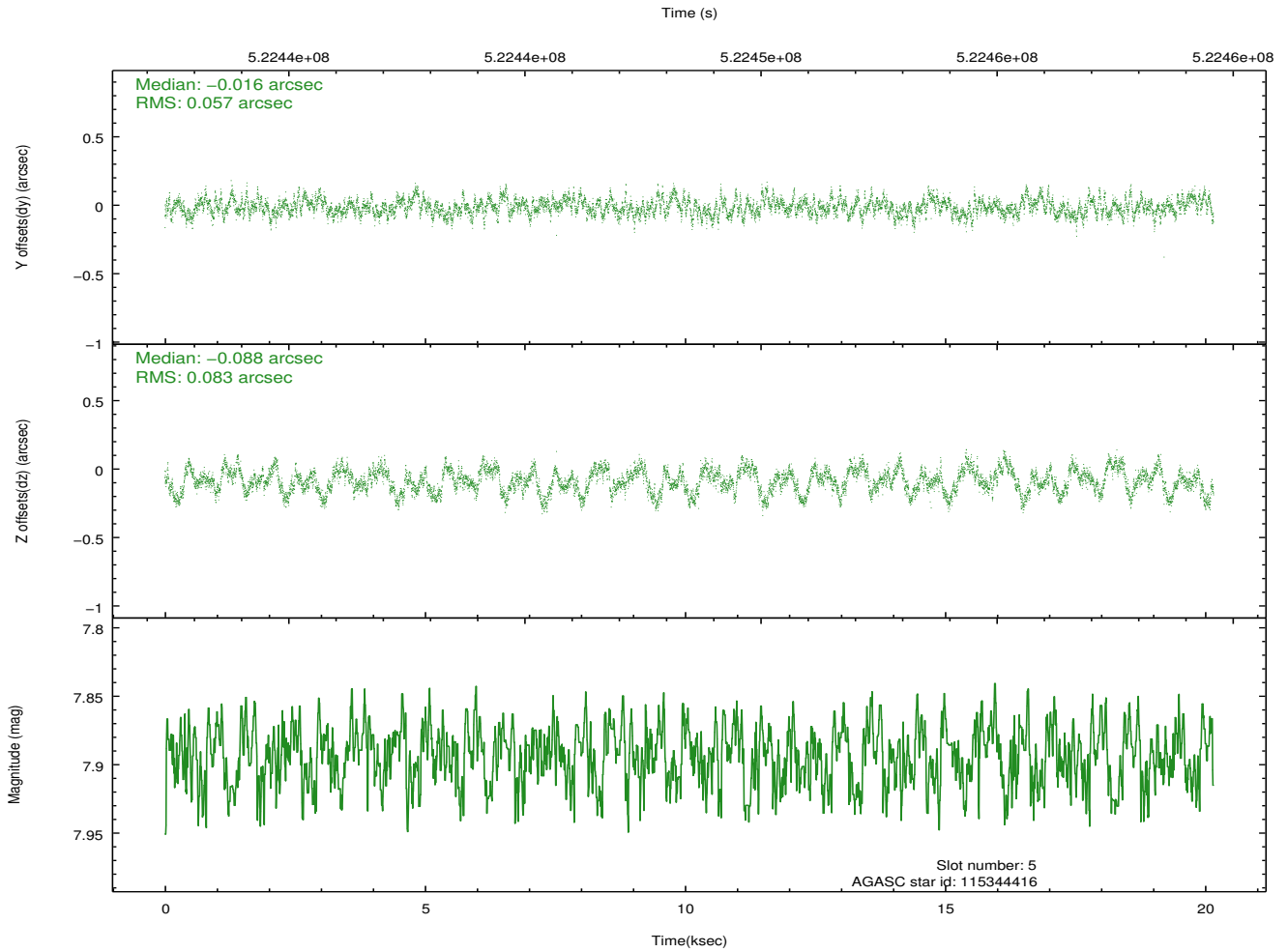
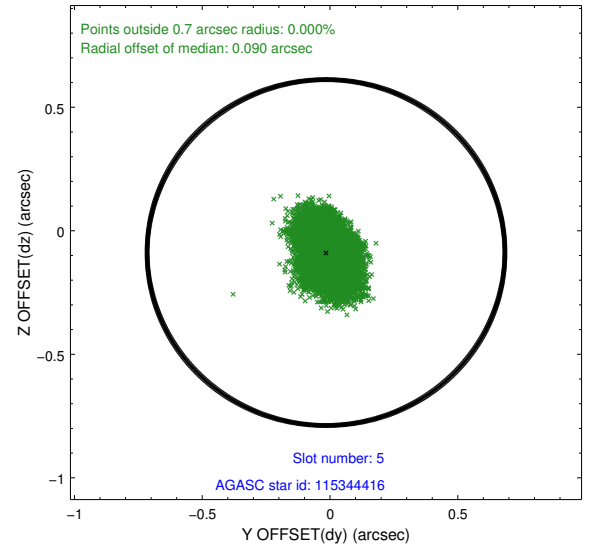
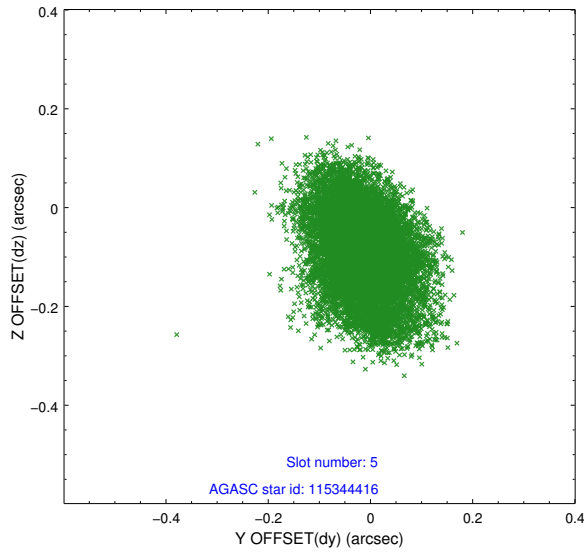


## 2.4.2 Slot 4

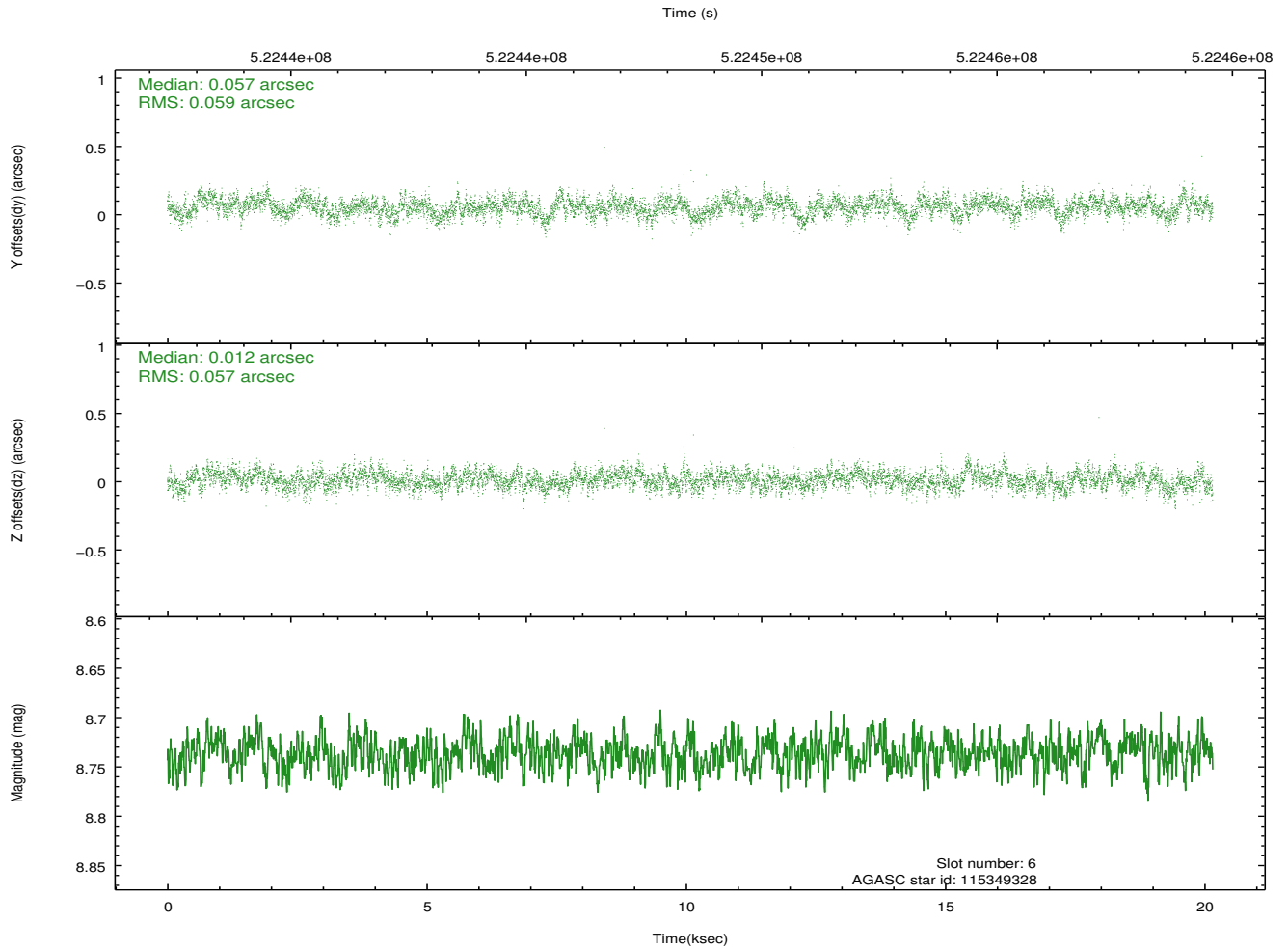
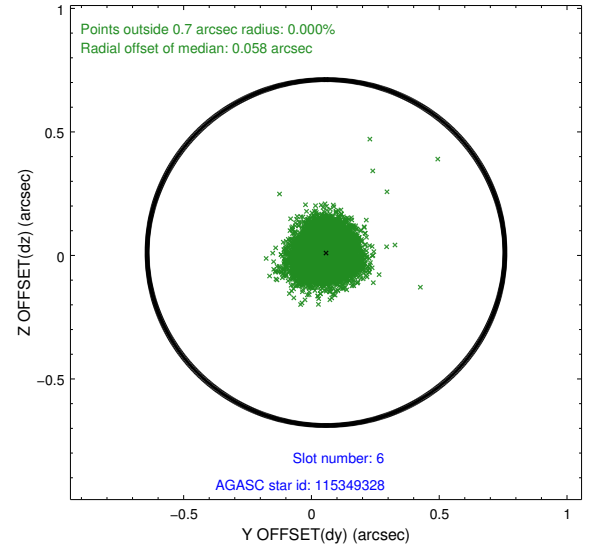
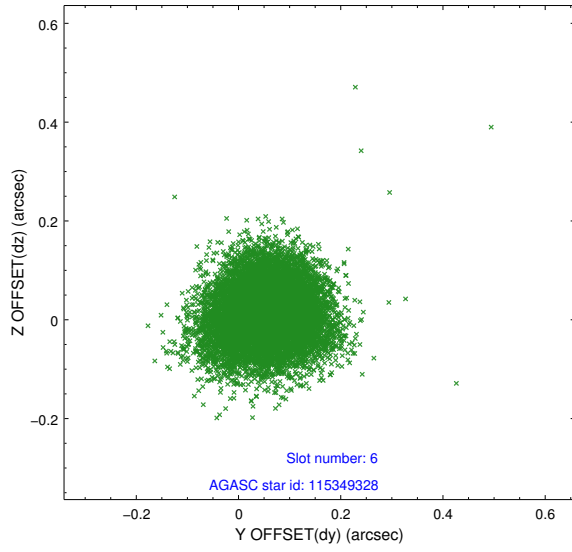




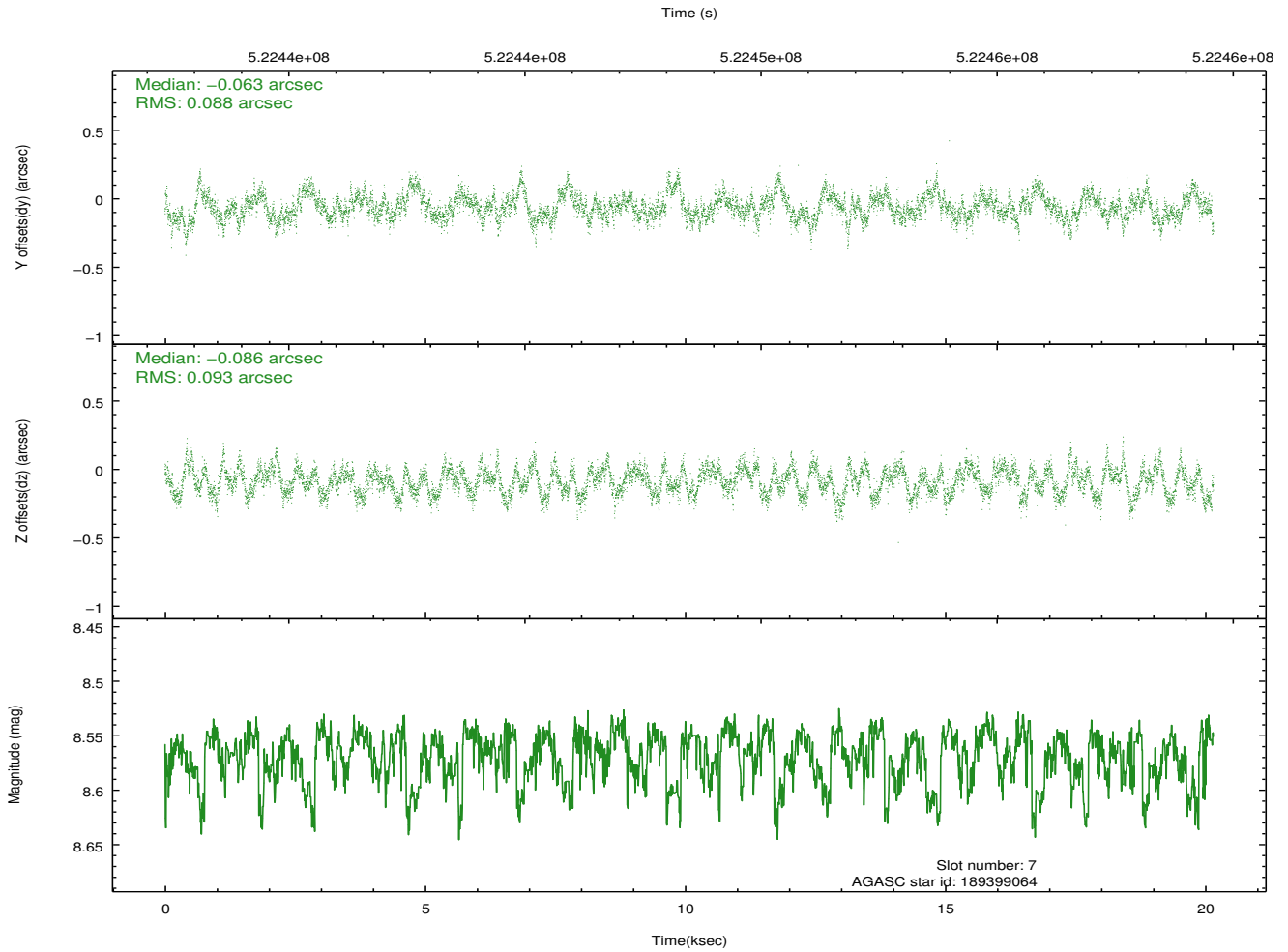
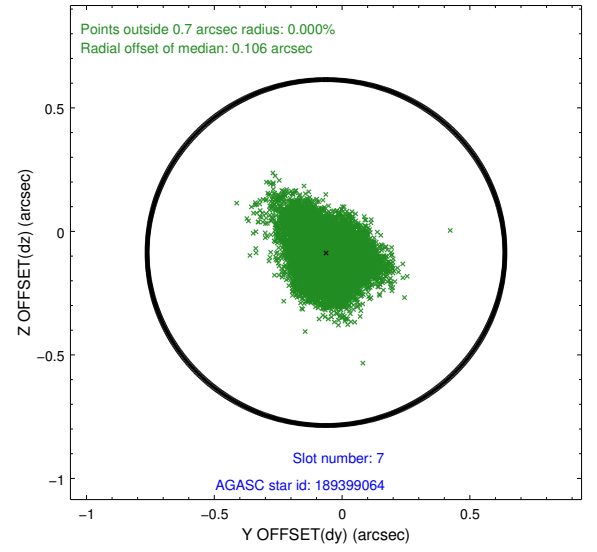
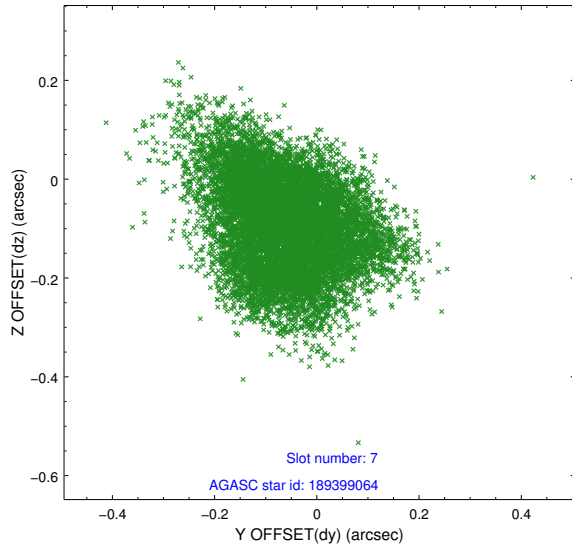
### 2.4.3 Slot 5



## 2.4.4 Slot 6

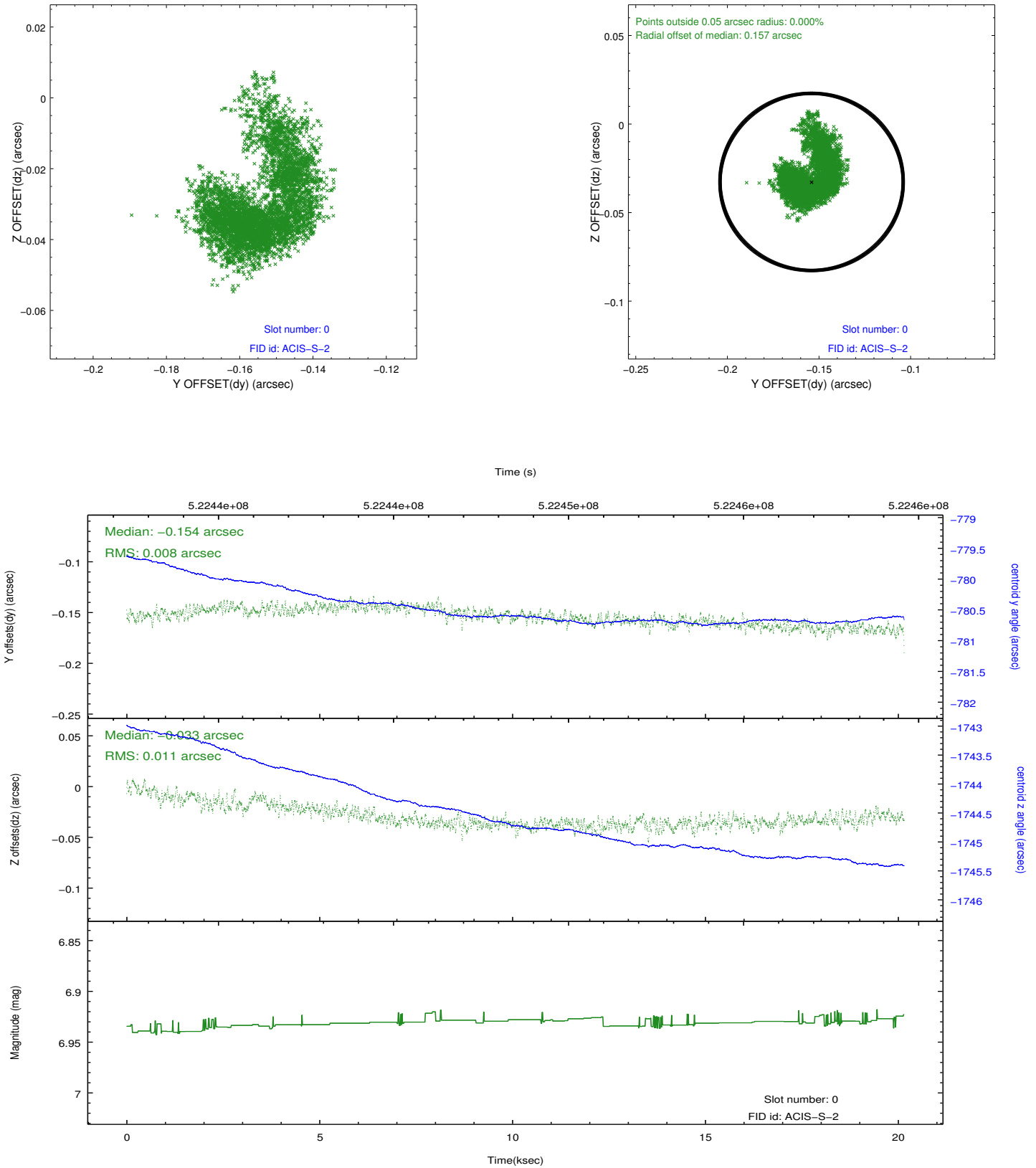


## 2.4.5 Slot 7

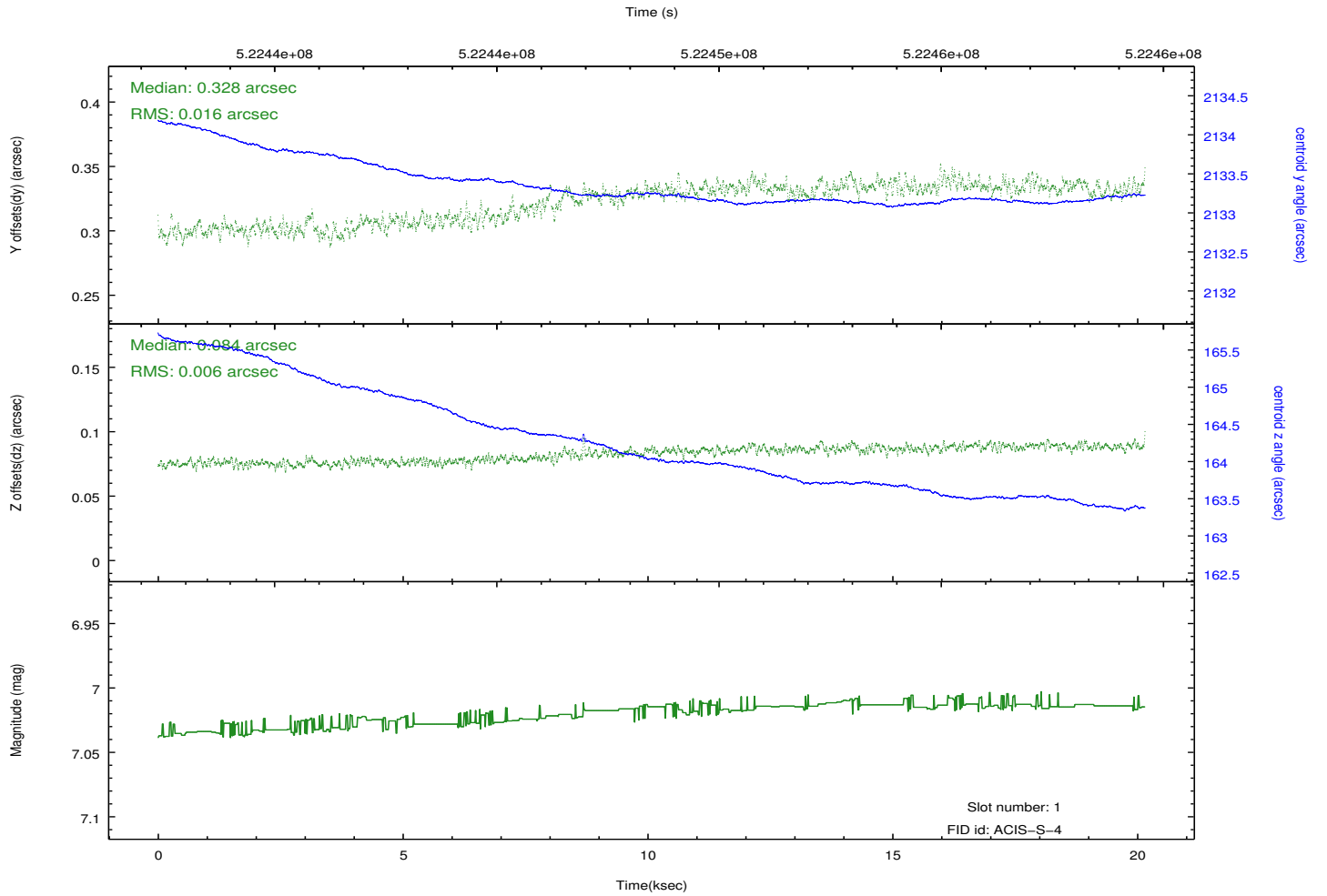
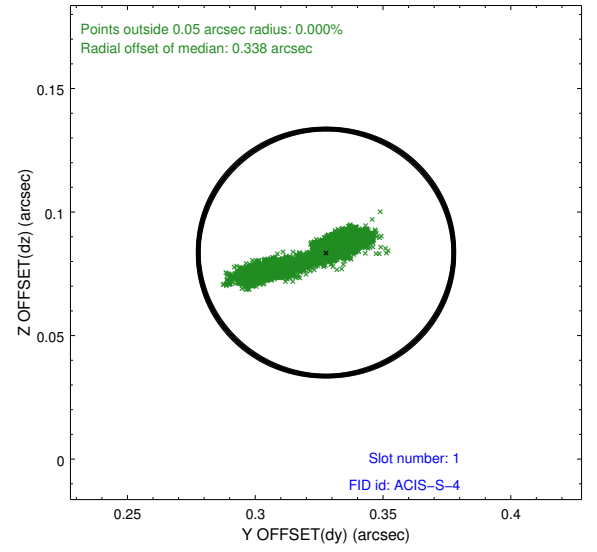
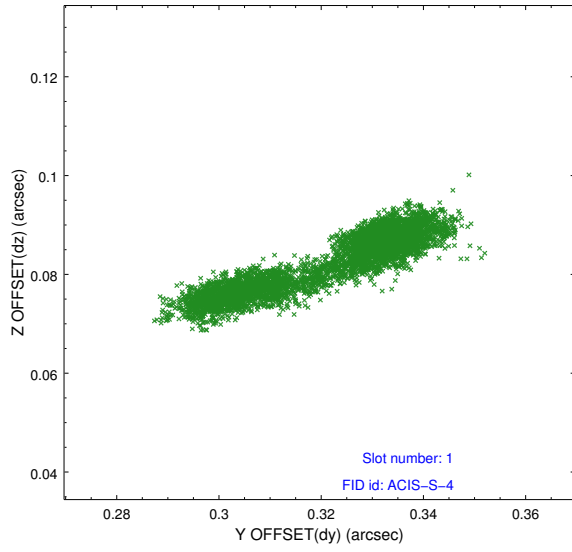


## 2.5 FID Slots

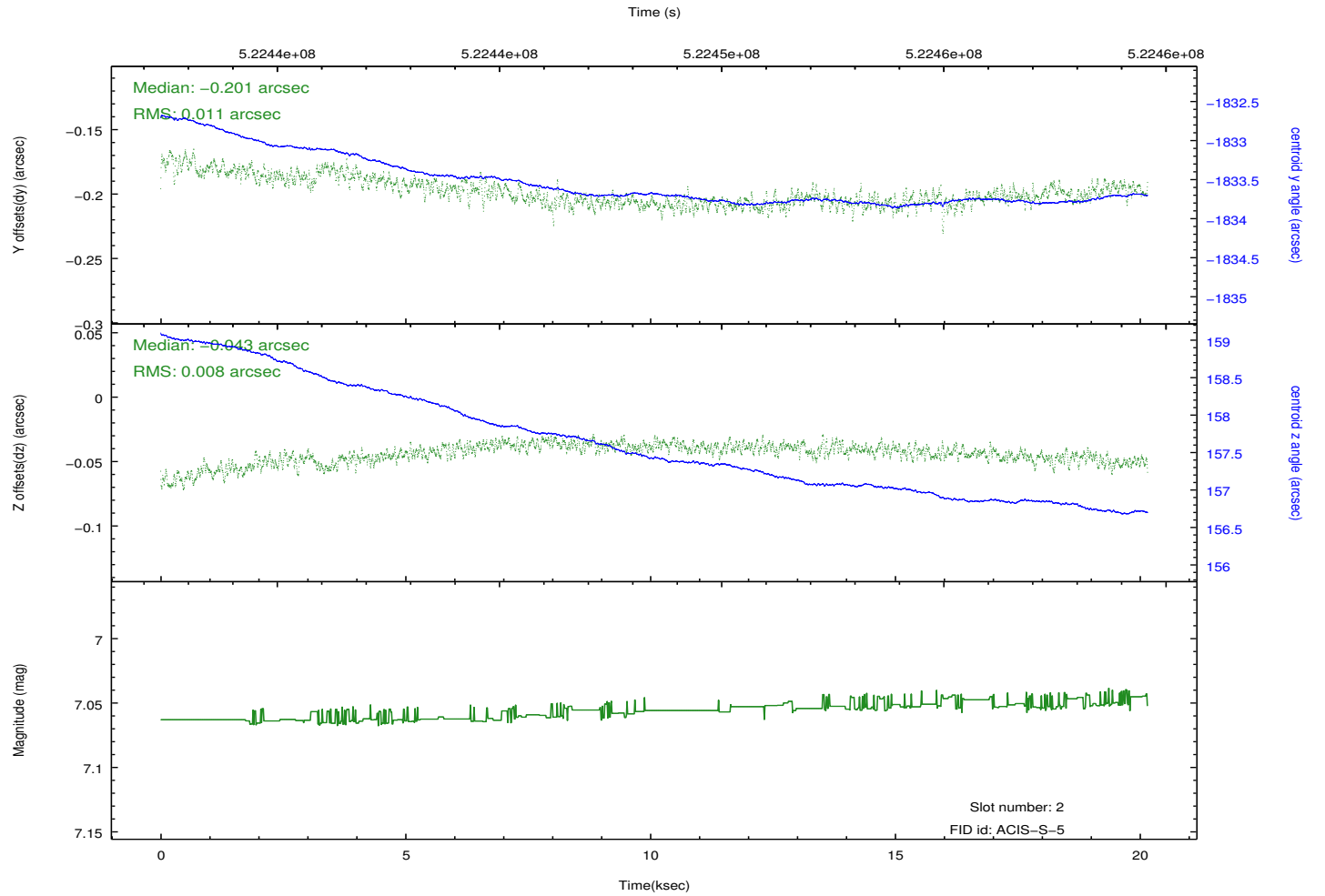
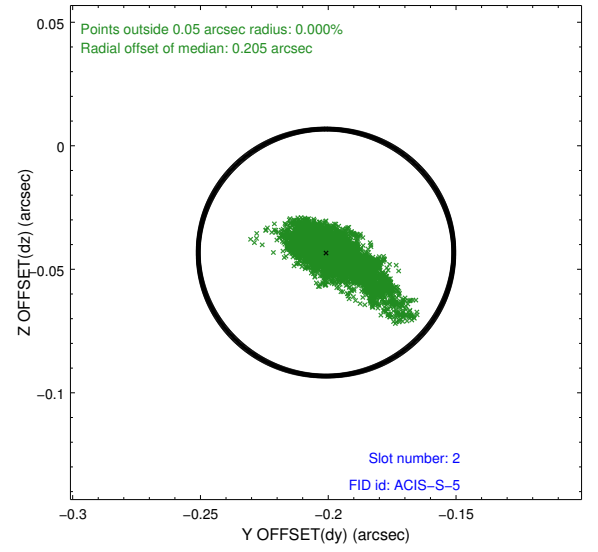
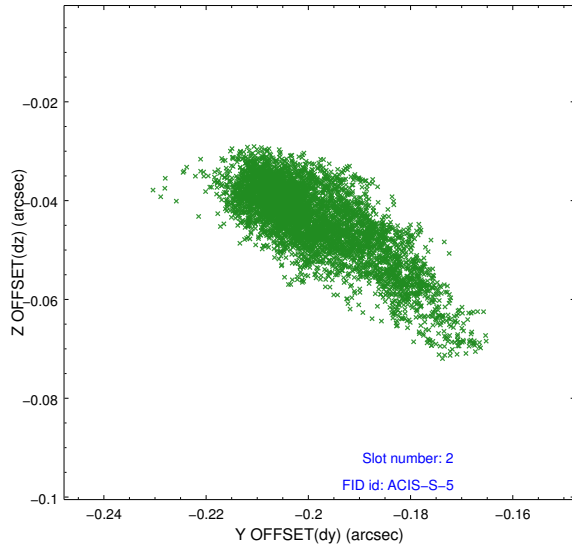
### 2.5.1 Slot 0



## 2.5.2 Slot 1



### 2.5.3 Slot 2



# A Summary

## A.1 Status

V&V Scientist	Jen Lauer
V&V Date (YYYY-MM-DD)	2014.07.23
V&V Edition	1
V&V Disposition and Status	OK
V&V Charge Time	20.11590015471

## A.2 Comments

Joint Proposal: HST