

V&V Reference Report

L2 ASCDS Version : 10.3

Observation 15783 - L2 Version 1
Chandra X-Ray Center

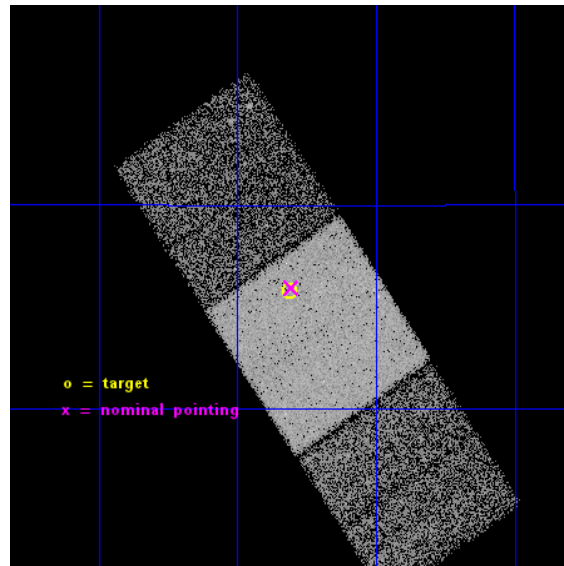
L2 Processing Date : Nov 21 2014

Contents

1	Front	2
2	OBI	3
2.1	OBI	3
2.1.1	Images	3
2.1.2	Bias	3
2.1.3	Parameters	4
2.1.4	Events	4
2.2	Compared Parameters	5
2.3	Aspect	6
2.4	Star Slots	9
2.4.1	Slot 3	9
2.4.2	Slot 4	10
2.4.3	Slot 5	11
2.4.4	Slot 6	12
2.4.5	Slot 7	13
2.5	FID Slots	14
2.5.1	Slot 0	14
2.5.2	Slot 1	15
2.5.3	Slot 2	16
A	Summary	17
A.1	Status	17
A.2	Comments	17

1 Front

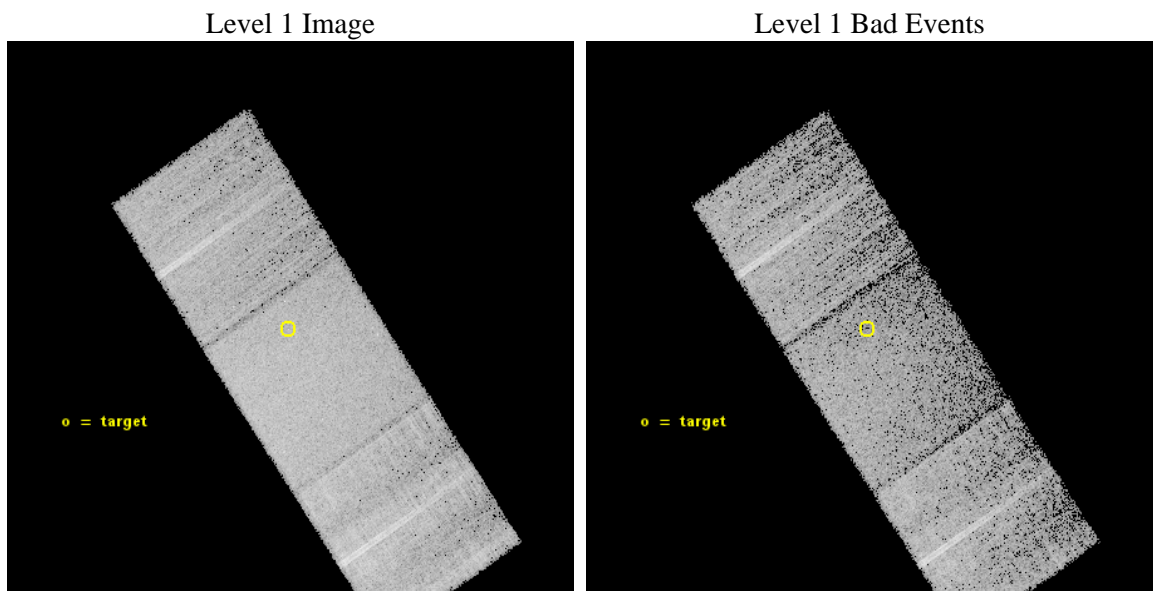
seq_num	401580	Sequence number
obs_id	15783	Observation id
title	CXOU J122518.6+144545: Type IIIn supernova or hyperluminous X-ray source?	Proposal title
observer	Ms Marianne Heida	Principal investigator
object	CXOU J122518.6+144545	Source name
dtcycle	0	
cycle	P	events from which exps? Prim/Second/Both
ra_targ	186.3275	Observer's specified target RA [deg]
dec_targ	14.762694	Observer's specified target Dec [deg]
ra_nom	186.32627965126	Nominal RA [deg]
dec_nom	14.765583206279	Nominal Dec [deg]
roll_nom	56.185137297599	Nominal Roll [deg]
revision	1	Processing version of data
ontime	20112.800154686	Sum of GTIs [s]
livetime	19850.011613837	Livetime [s]
ontime6	20106.518194079	Sum of GTIs [s]
ontime7	20112.800154686	Sum of GTIs [s]
ontime8	20112.800154686	Sum of GTIs [s]
l2events	90641	Number of level 2 events



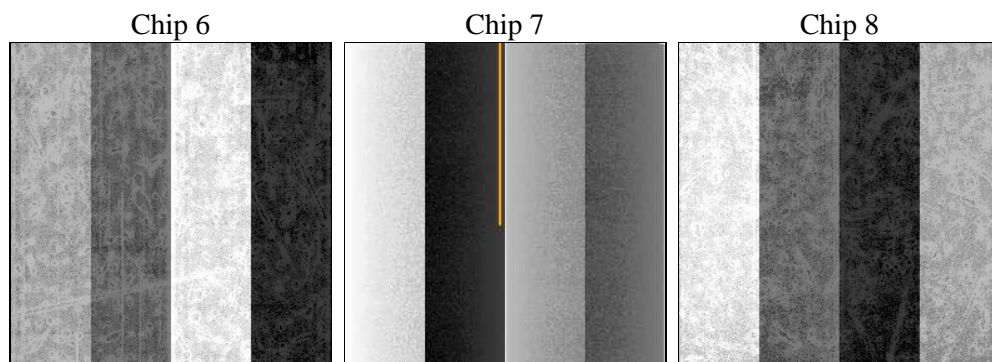
2 OBI

2.1 OBI

2.1.1 Images



2.1.2 Bias



2.1.3 Parameters

obi_num	1	Obi number	sched_exp_time	20000.000000	[s] Scheduled observation exposure time
ascdsver	10.3	Processing system revision	ontime	20112.800154686	Sum of GTIs [s]
caldsver	4.6.4	 	ontime6	20106.518194079	Sum of GTIs [s]
date	2014-11-21T06:35:32	Date and time of file creation	ontime7	20112.800154686	Sum of GTIs [s]
revision	1	Processing version of data	ontime8	20112.800154686	Sum of GTIs [s]
			l1events	405660	Number of level 1 events

2.1.4 Events

	ccd 6	ccd 7	ccd 8
level 1 events	109803	147907	147950
rejected events	96382	81947	107078
rejected %	87%	55%	72%

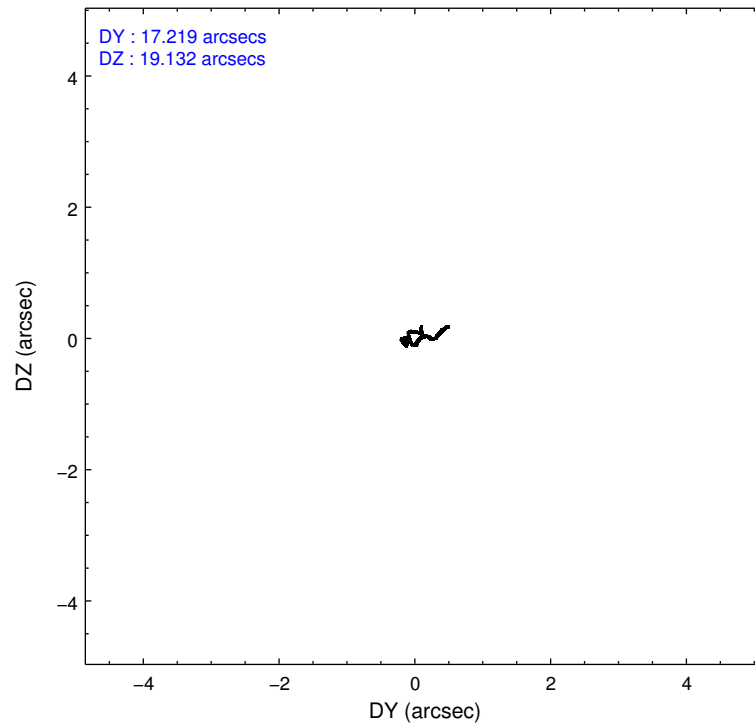
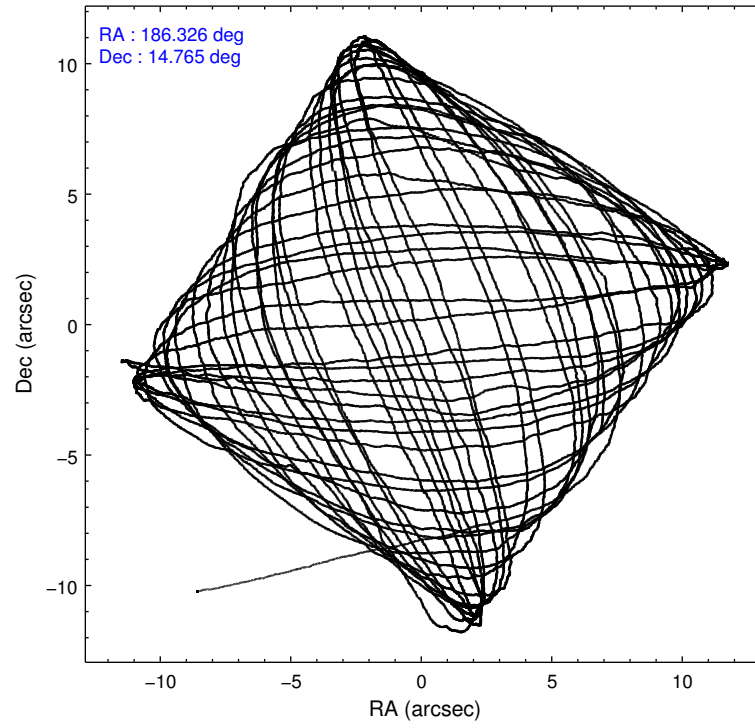
	ccd 6	ccd 7	ccd 8
grade 0 events	4671	6112	12605
	4%	4%	8%
grade 1 events	54	182	106
	0%	0%	0%
grade 2 events	3038	13644	9605
	2%	9%	6%
grade 3 events	1291	5641	4343
	1%	3%	2%
grade 4 events	1346	5471	4047
	1%	3%	2%
grade 5 events	5562	15268	8227
	5%	10%	5%
grade 6 events	3077	35097	10276
	2%	23%	6%
grade 7 events	90764	66492	98741
	82%	44%	66%

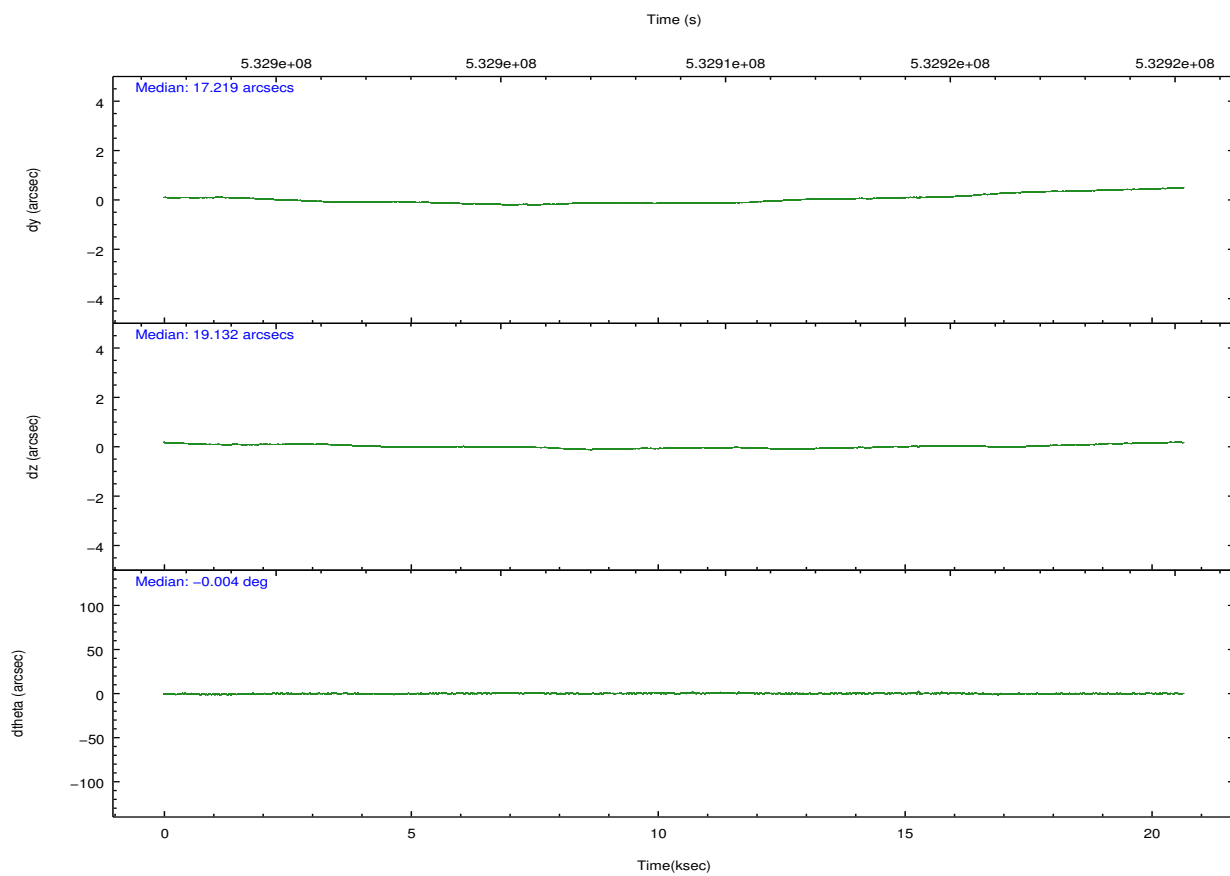
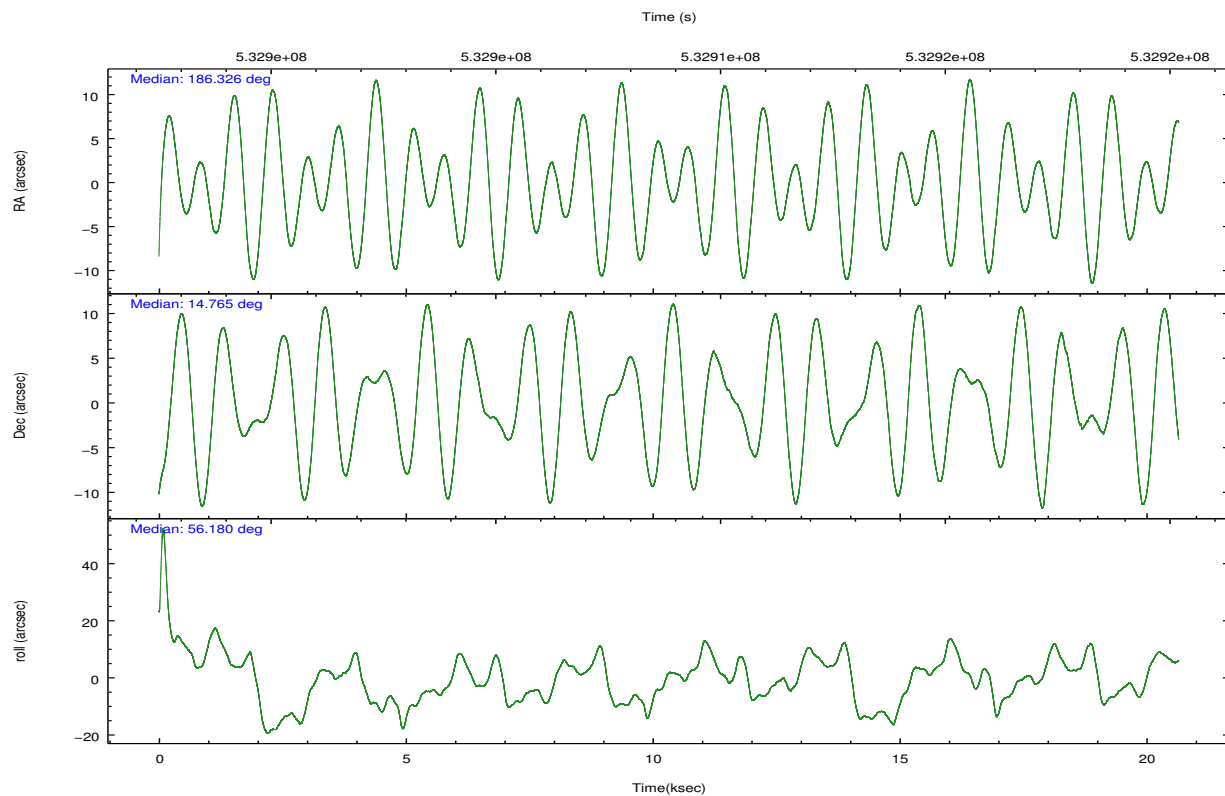
2.2 Compared Parameters

Parameter	Planned	Actual
Instrument	ACIS	ACIS
Detector	ACIS-678	ACIS-678
Grating	NONE	NONE
Data mode	VFAINT	VFAINT
Observation mode	POINTING	POINTING
[deg] Pointing RA	186.324749	186.3262796512556
[deg] Pointing Dec	14.738157	14.76558320627896
[deg] Pointing Roll	56.028928	56.18513729759932
[mm] SIM focus pos	-0.684267	-0.6828225247311905
[mm] SIM defocus	0	0.001444936568705701
[mm] SIM translation stage pos	-190.132523	-190.1425803651734
[mm] SIM translation stage offset	0	0.01005778216563158
[s] Observation start time (MET)	532899169.184000	532898097.4911
Observation start date	2014-11-20T19:31:42	2014-11-20T19:14:57
[s] Observation end time (MET)	532919169.184000	532919589.6923
Observation end date	2014-11-21T01:05:02	2014-11-21T01:13:09
Read mode	TIMED	TIMED

Parameter	Planned	Actual
Obspar format version number	7	7
Obspar file type	PREDICTED	ACTUAL
Obspar update status	NONE	UPDATED
CCD I0 on	N	N
CCD I1 on	N	N
CCD I2 on	N	N
CCD I3 on	N	N
CCD S0 on	N	N
CCD S1 on	N	N
CCD S2 on	O2	Y
CCD S3 on	Y	Y
CCD S4 on	O1	Y
CCD S5 on	N	N
Number of optional ACIS chips dropped	0	0
On-chip summing requested	N	N
Subarray requested	NONE	NONE
Alternating exposures requested	N	N
[s] Primary exposure time	0.000000	3.1

2.3 Aspect



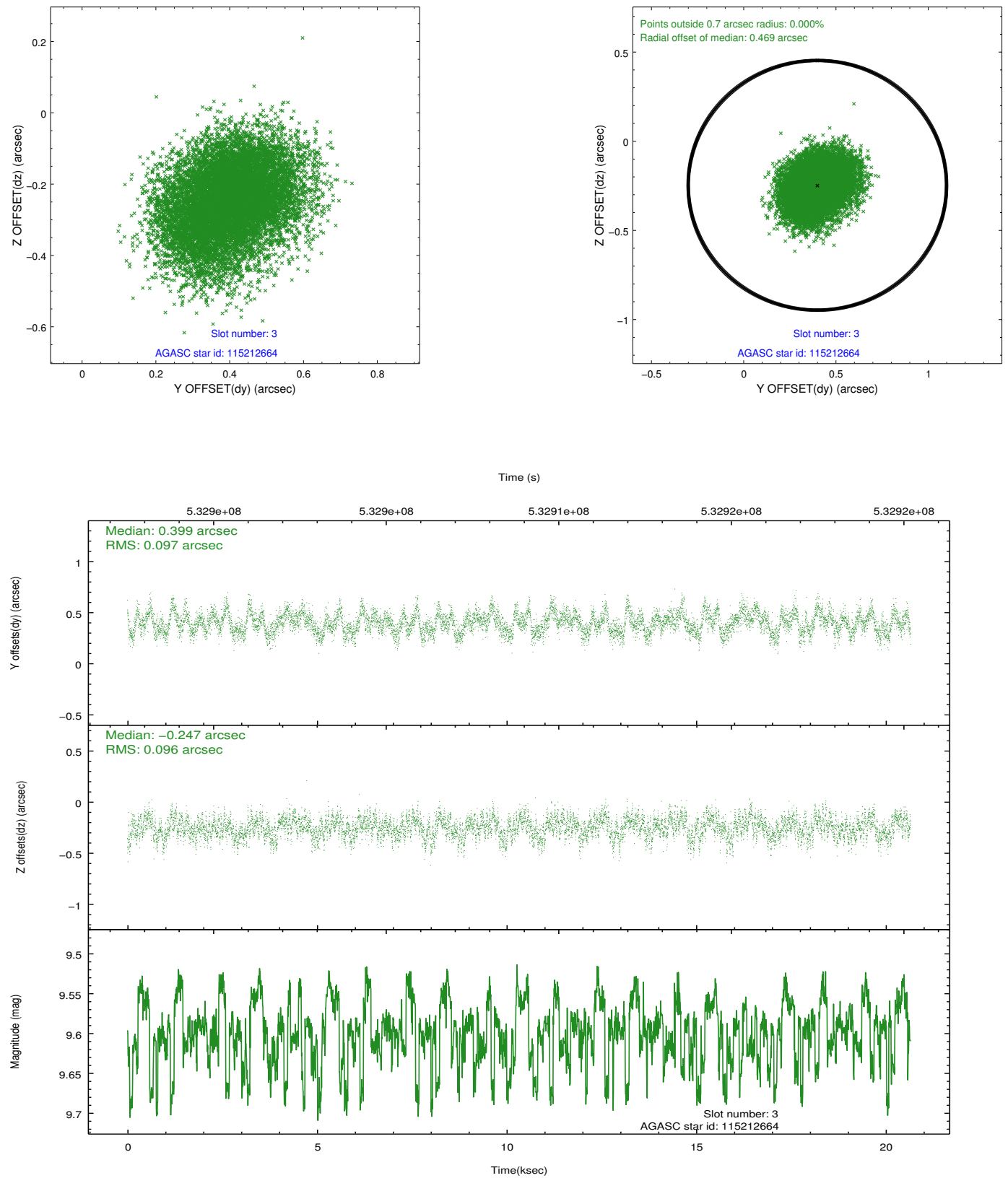


Slot Statistics

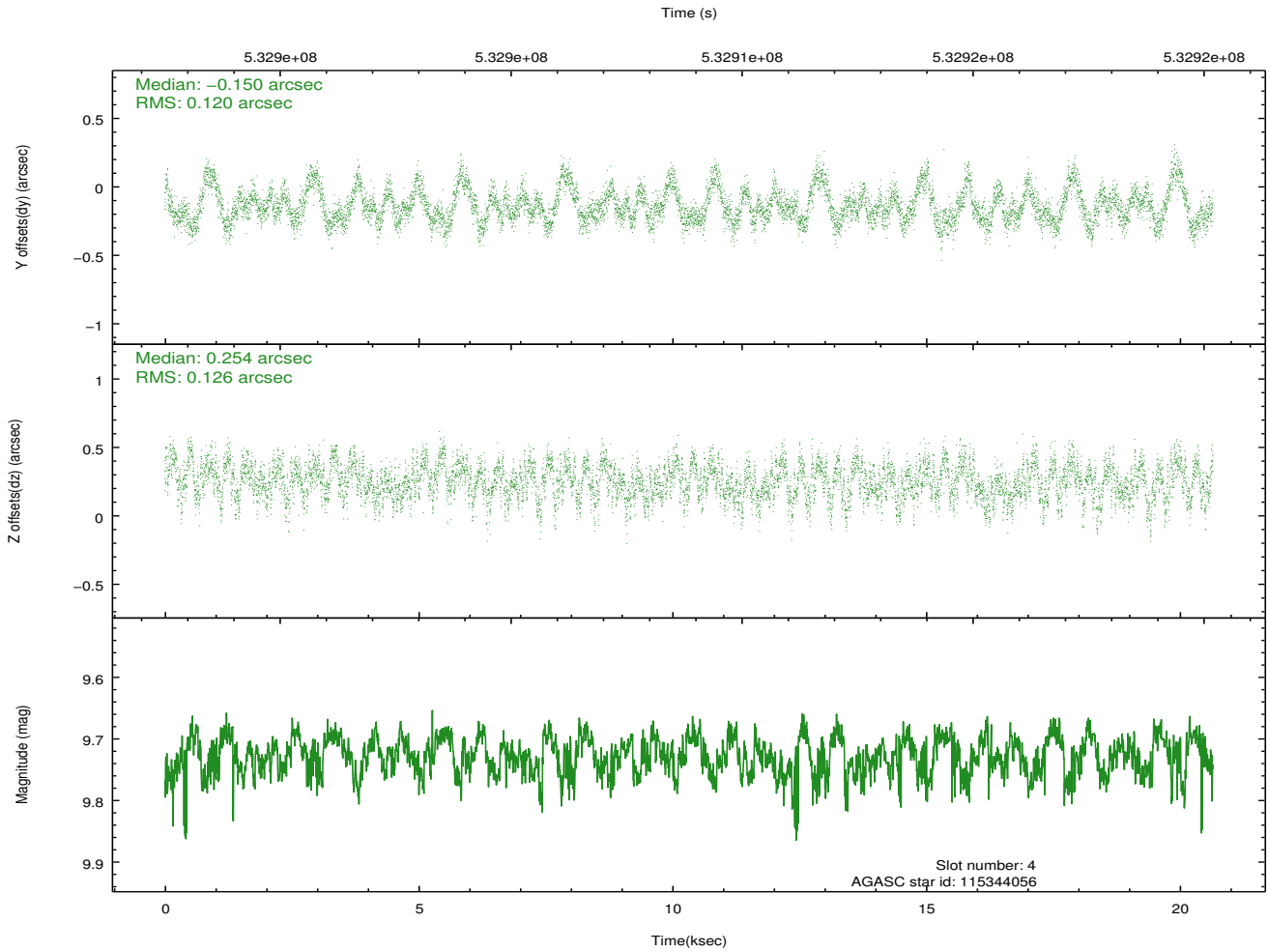
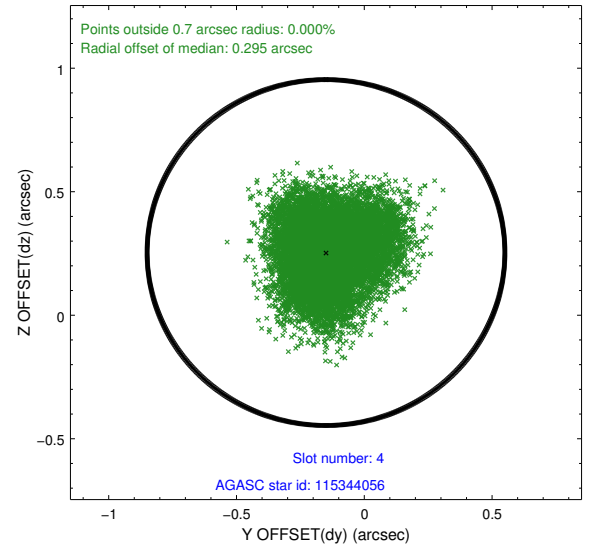
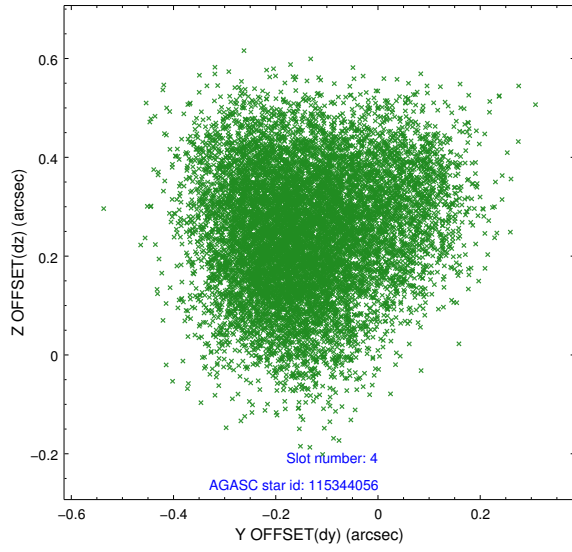
slot	status	used	id	mag	n_pts	med_dy	med_dz	dr1	dr2	ra	dec	mean_y	mean_z
0	FID		ACIS-S-2	6.92	5037	-0.092	-0.018	0.006	0.011	0.000000	0.000000	-770.38	-1740.60
1	FID		ACIS-S-4	7.01	5036	0.202	0.050	0.008	0.018	0.000000	0.000000	2143.11	167.76
2	FID		ACIS-S-5	7.04	5037	-0.141	-0.022	0.009	0.017	0.000000	0.000000	-1823.05	161.56
3	GUIDE	used	115212664	9.60	10069	0.399	-0.247	0.148	0.232	186.112214	14.500161	-1125.12	135.20
4	GUIDE	used	115344056	9.73	10056	-0.150	0.254	0.188	0.294	186.832724	14.436924	92.02	-2073.15
5	GUIDE	used	115344416	7.89	10070	0.095	-0.068	0.132	0.210	186.624628	14.572004	88.46	-1200.17
6	GUIDE	used	189399280	9.92	9937	-0.060	-0.518	0.242	0.379	186.536897	15.337958	2202.42	595.85
7	GUIDE	used	189403320	10.02	10063	-0.307	0.565	0.200	0.308	186.650538	15.117423	1765.82	-174.72

2.4 Star Slots

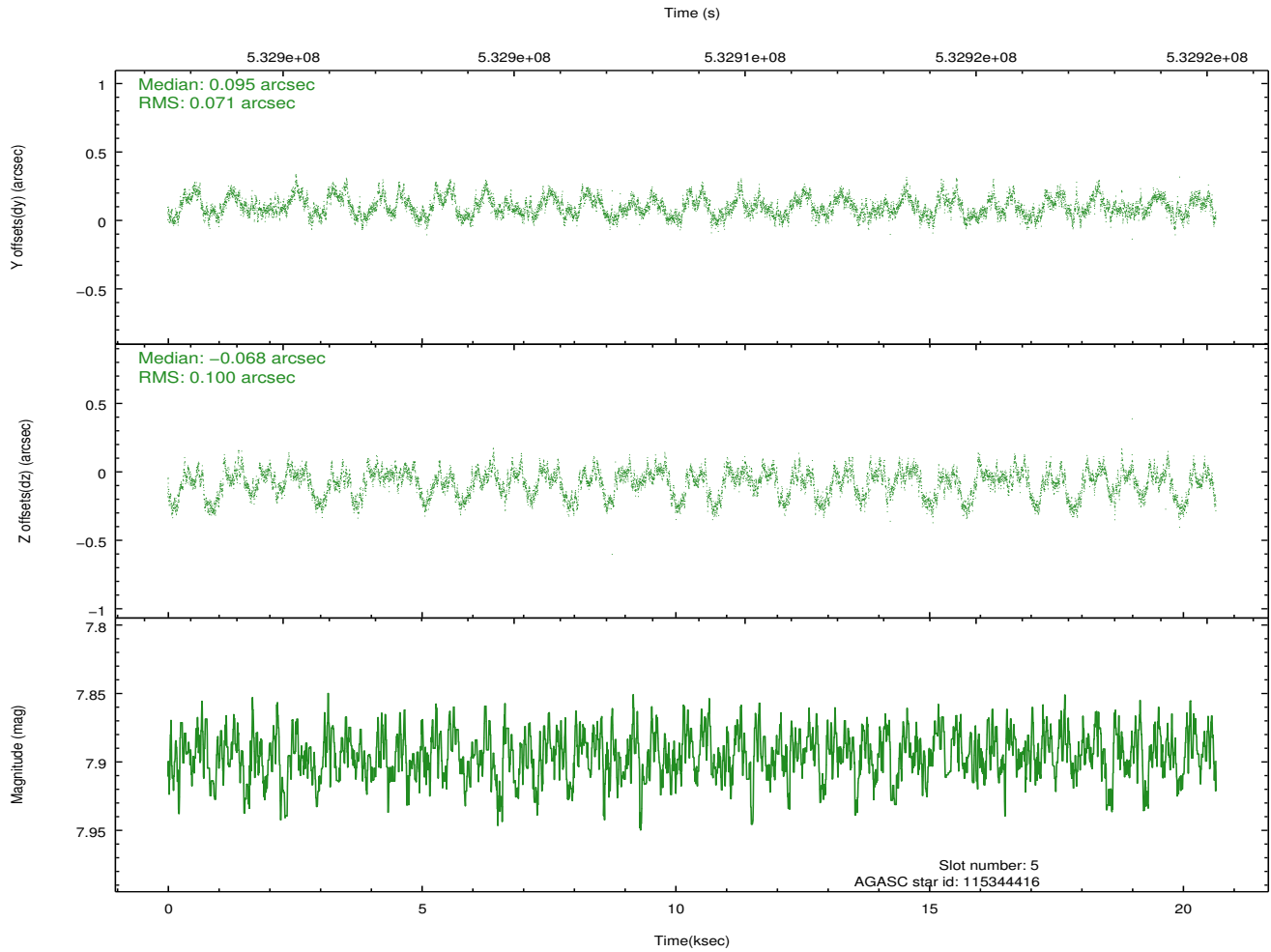
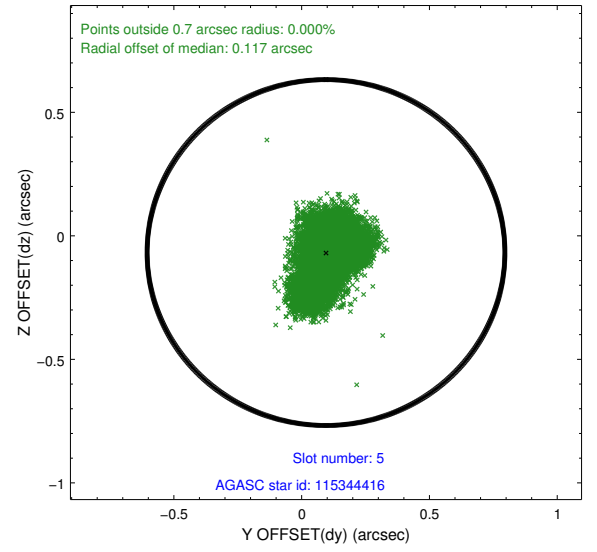
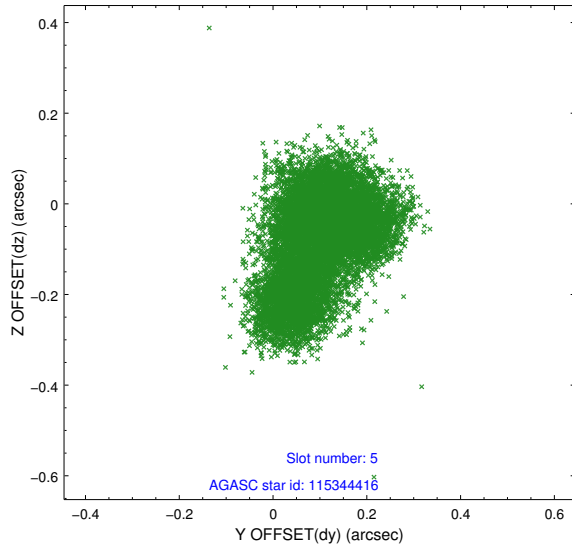
2.4.1 Slot 3



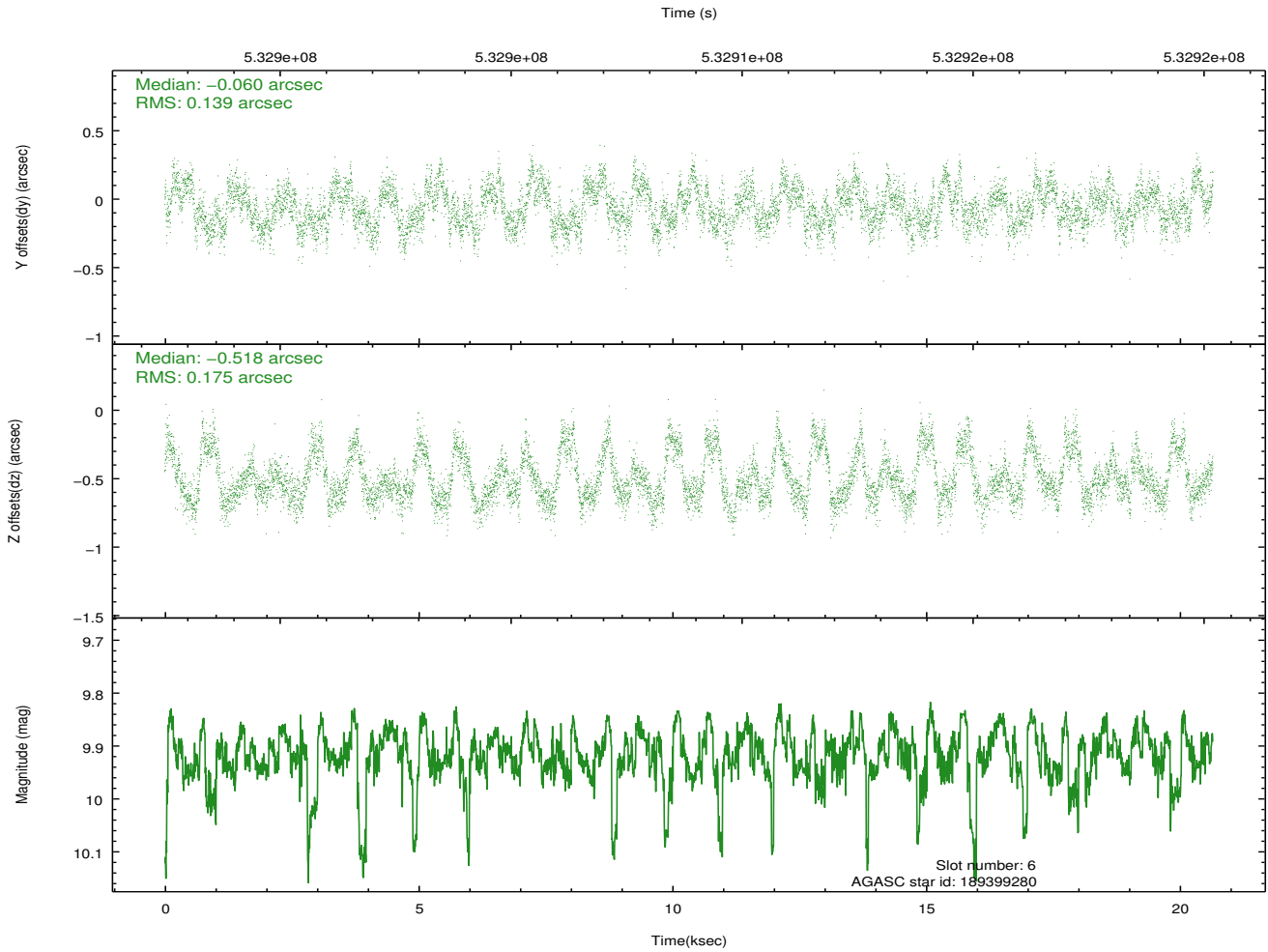
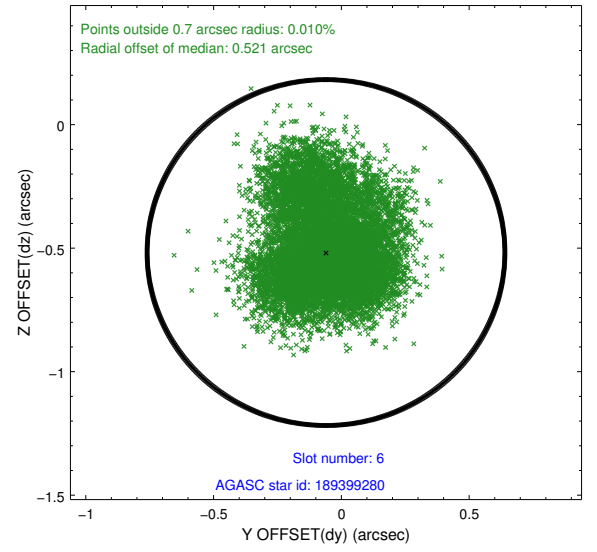
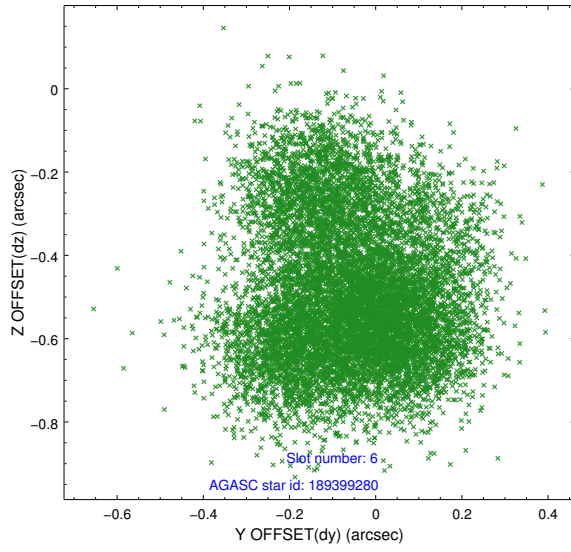
2.4.2 Slot 4



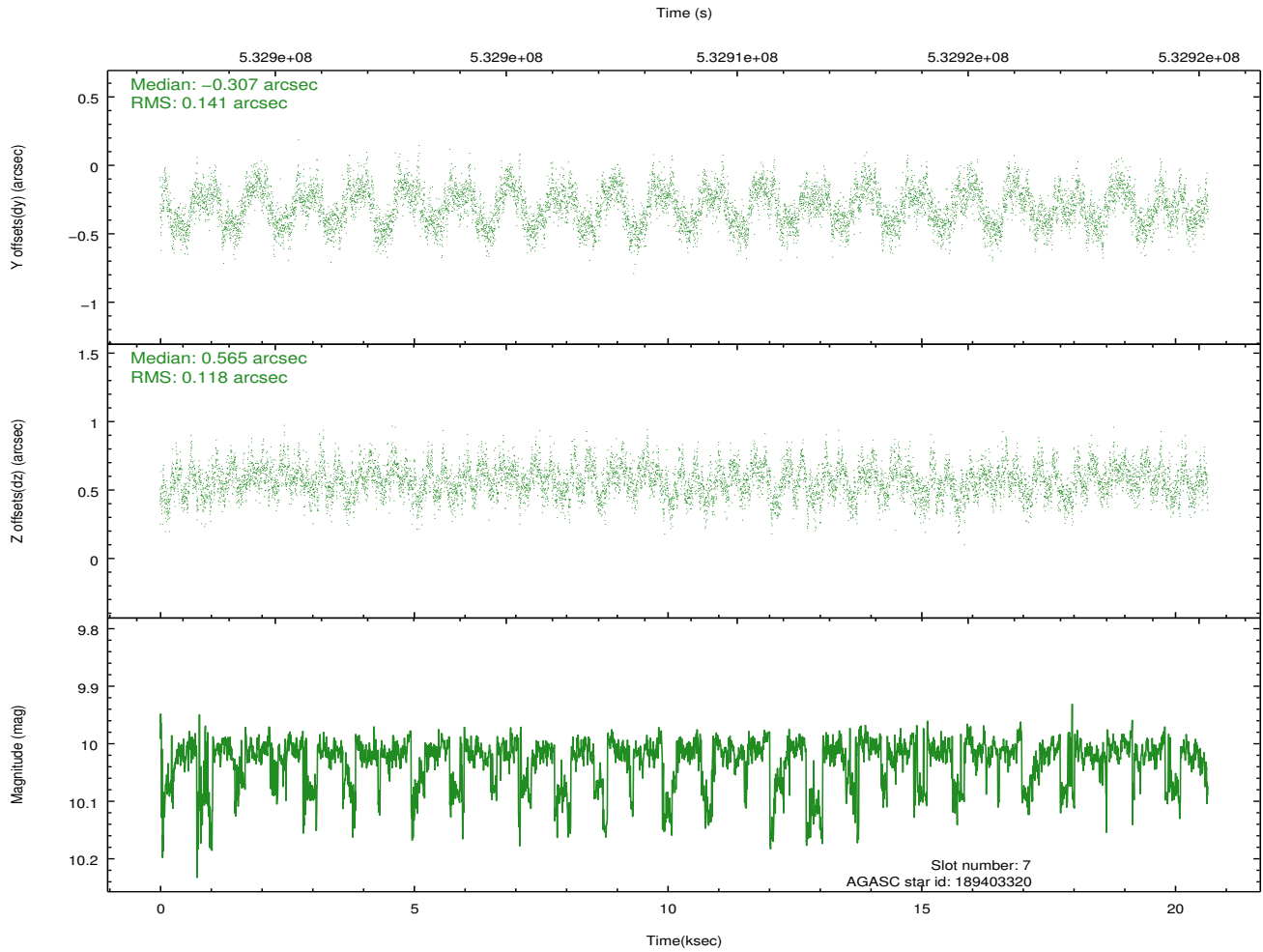
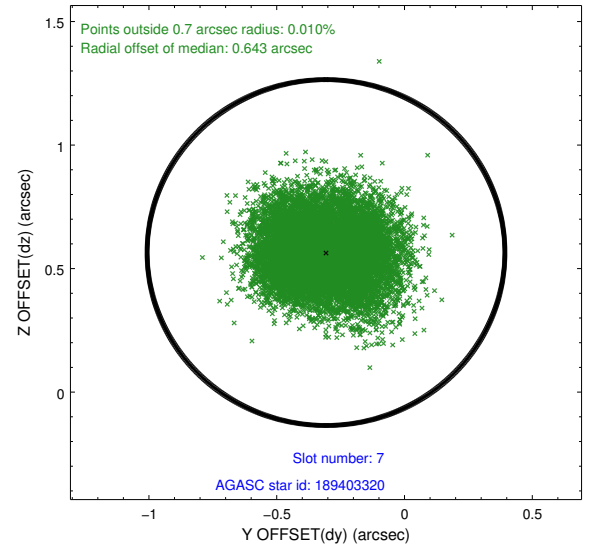
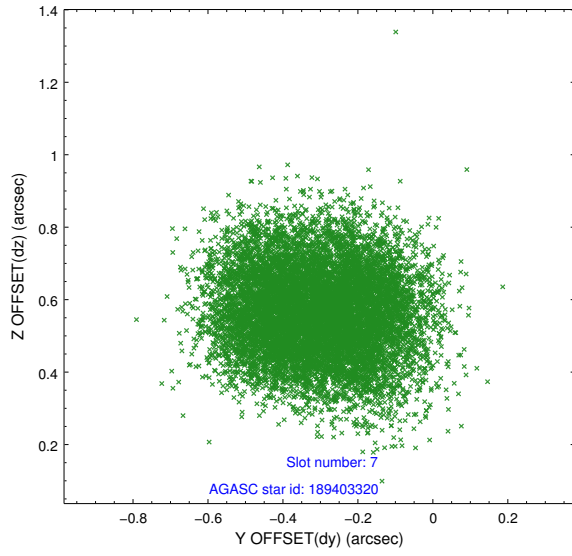
2.4.3 Slot 5



2.4.4 Slot 6

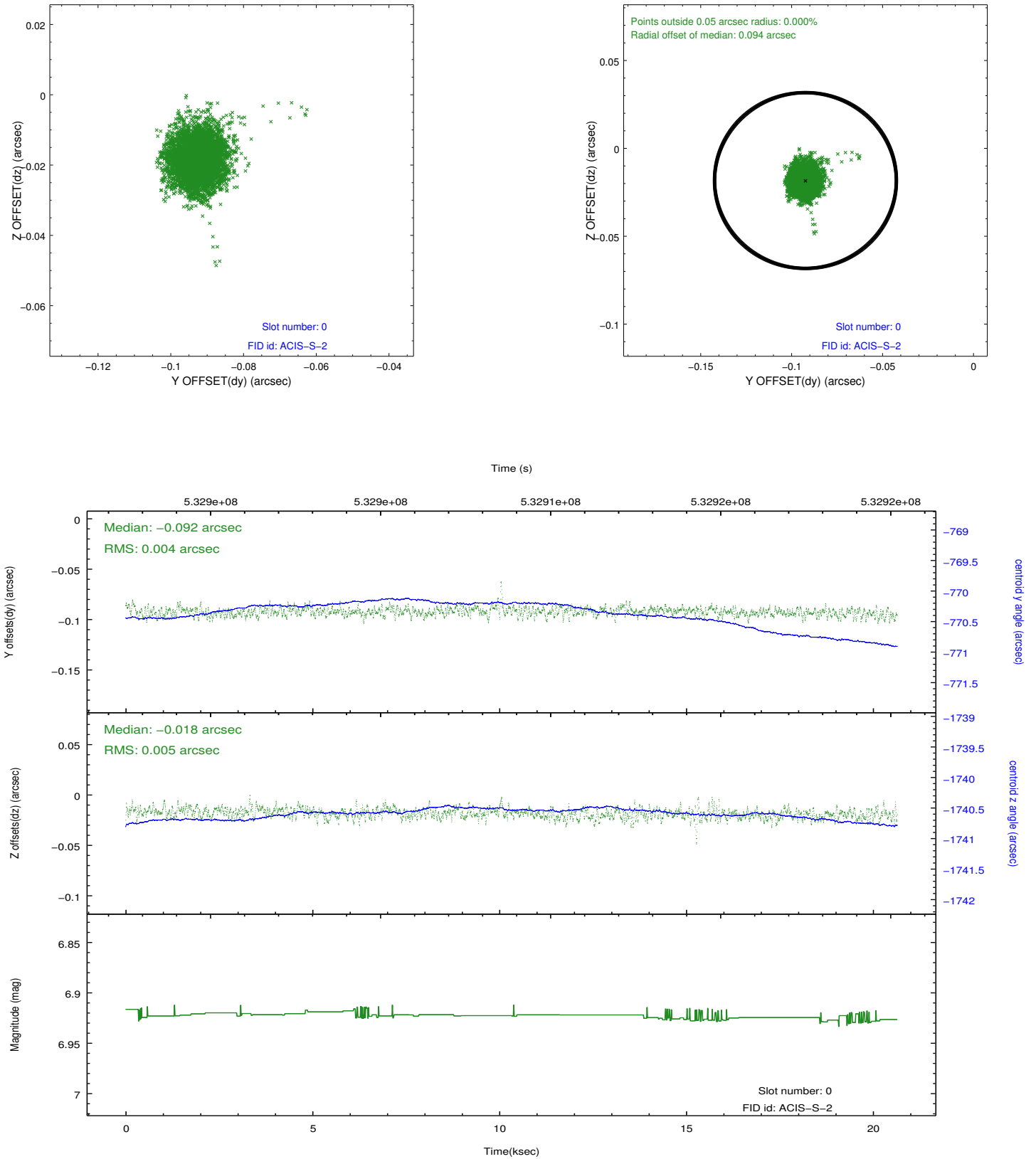


2.4.5 Slot 7

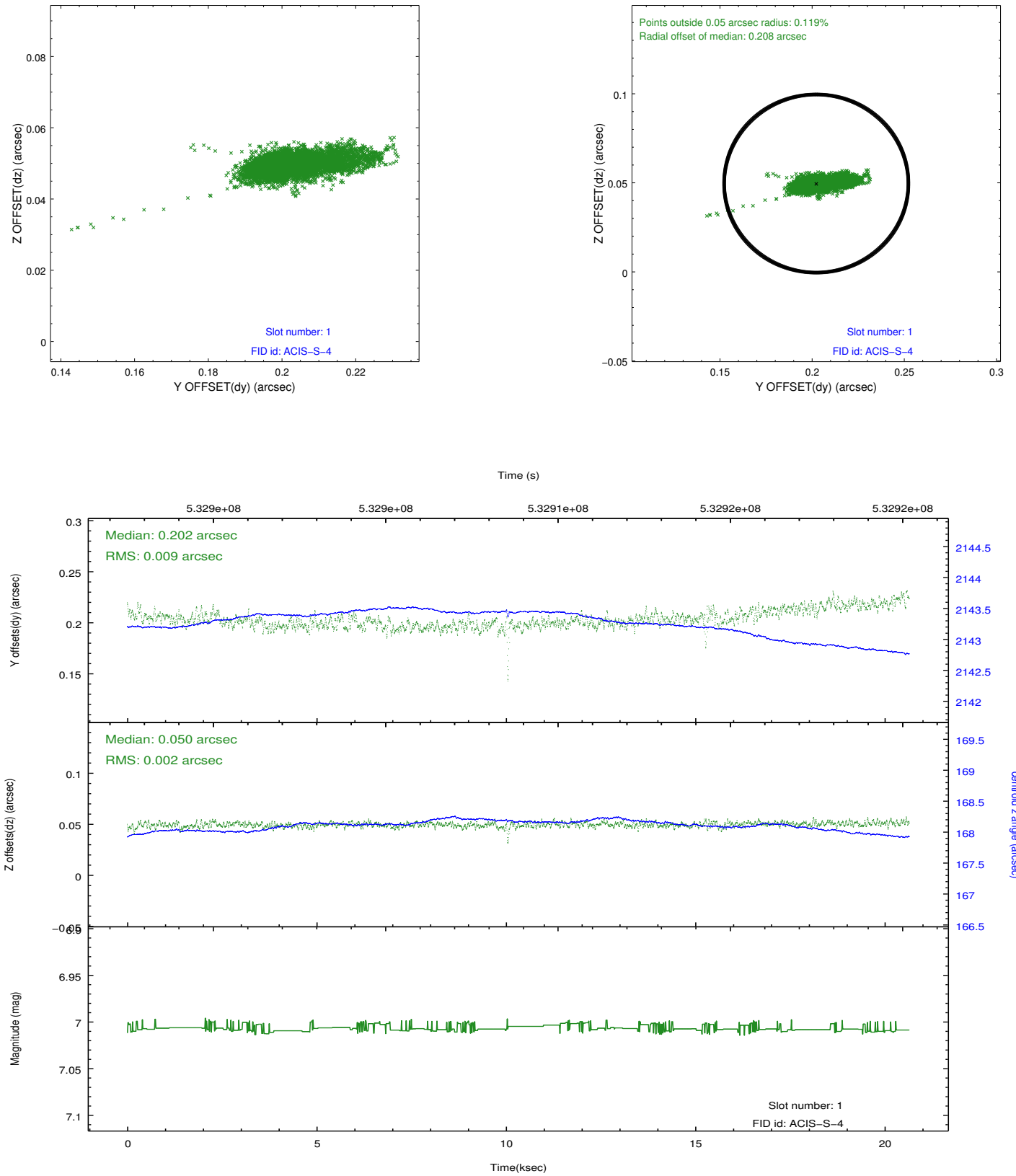


2.5 FID Slots

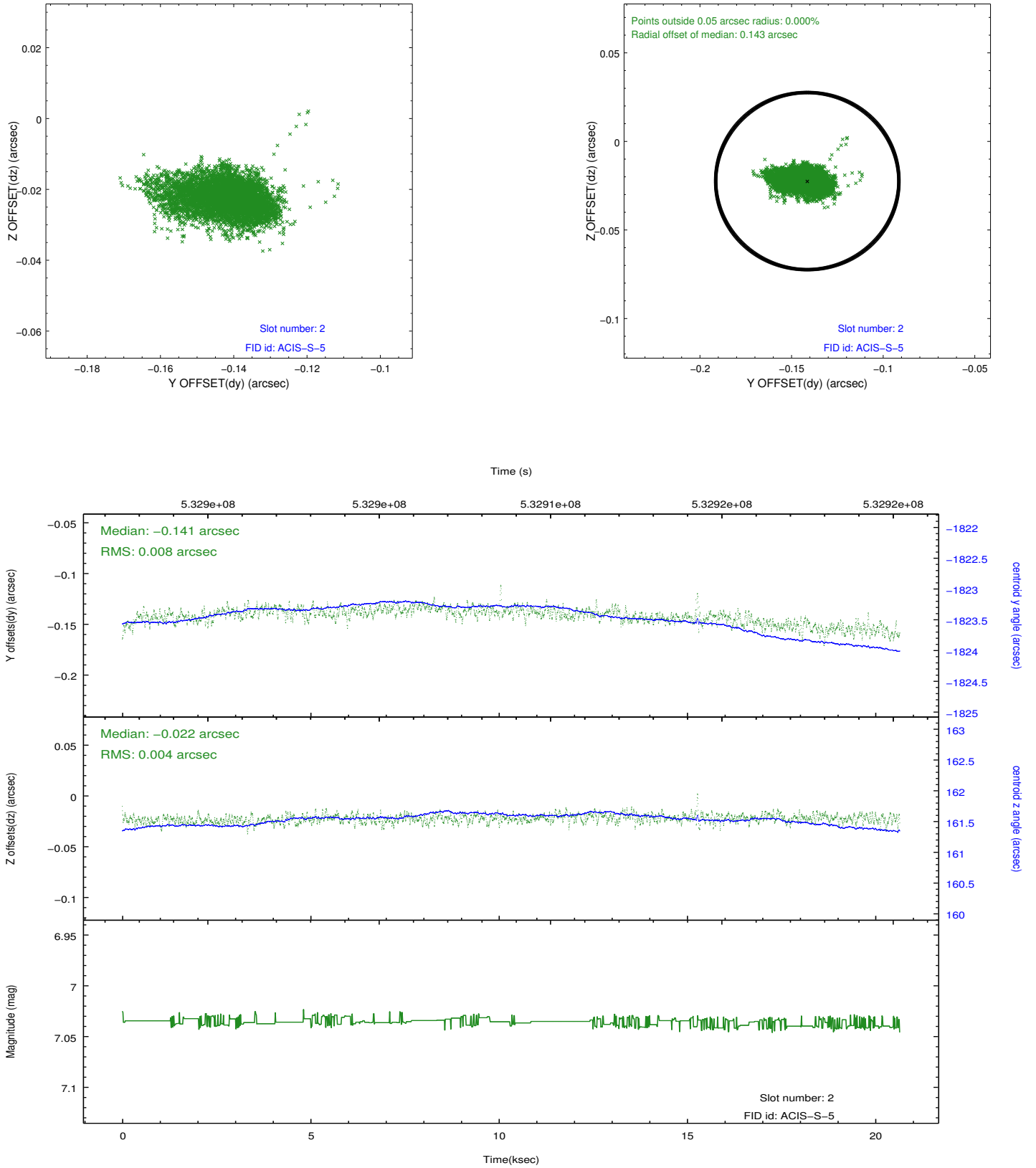
2.5.1 Slot 0



2.5.2 Slot 1



2.5.3 Slot 2



A Summary

A.1 Status

V&V Scientist	Jen Lauer
V&V Date (YYYY-MM-DD)	2014.11.24
V&V Edition	1
V&V Disposition and Status	OK
V&V Charge Time	20.112800154686

A.2 Comments

Joint Proposal: HST