

V&V Reference Report

L2 ASCDS Version : 10

Observation 15322 - L2 Version 2
Chandra X-Ray Center

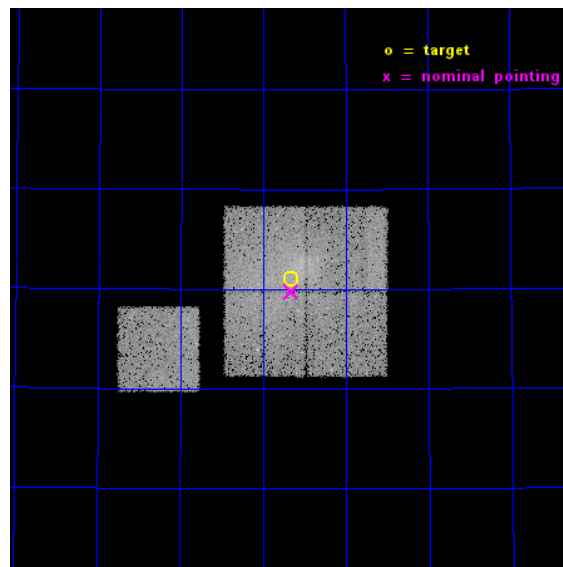
L2 Processing Date : Dec 4 2014

Contents

1	Front	2
2	OBI	3
2.1	OBI	3
2.1.1	Images	3
2.1.2	Bias	3
2.1.3	Parameters	4
2.1.4	Events	4
2.2	Compared Parameters	5
2.3	Aspect	6
2.4	Star Slots	9
2.4.1	Slot 3	9
2.4.2	Slot 4	10
2.4.3	Slot 5	11
2.4.4	Slot 6	12
2.4.5	Slot 7	13
2.5	FID Slots	14
2.5.1	Slot 0	14
2.5.2	Slot 1	15
2.5.3	Slot 2	16
A	Summary	17
A.1	Status	17
A.2	Comments	17

1 Front

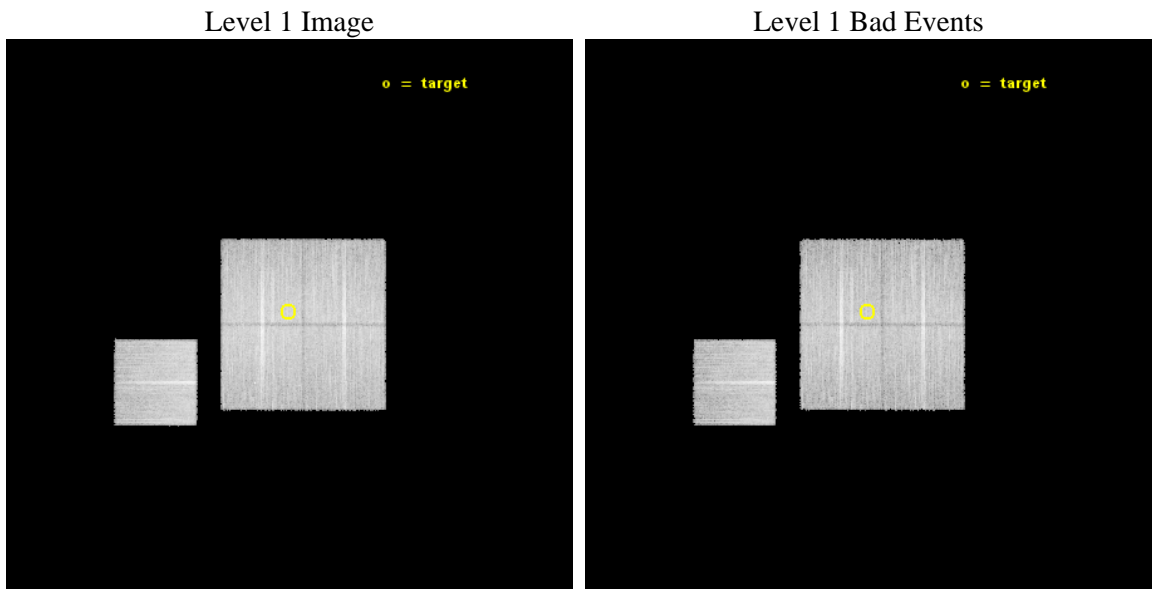
seq_num	801355	Sequence number
obs_id	15322	Observation id
title	Radio Relics (Type A)	Proposal title
observer	Dr Stephen Murray	Principal investigator
object	RXCJ1053.7+5452	Source name
dtcycle	0	
cycle	P	events from which exps? Prim/Second/Both
ra_targ	163.417917	Observer's specified target RA [deg]
dec_targ	54.850694	Observer's specified target Dec [deg]
ra_nom	163.4148020126	Nominal RA [deg]
dec_nom	54.829642861846	Nominal Dec [deg]
roll_nom	270.10605996866	Nominal Roll [deg]
revision	2	Processing version of data
ontime	25084.264323652	Sum of GTIs [s]
livetime	24756.519943497	Livetime [s]
ontime0	25081.000193298	Sum of GTIs [s]
ontime1	25081.041283309	Sum of GTIs [s]
ontime2	25077.941332877	Sum of GTIs [s]
ontime3	25084.264323652	Sum of GTIs [s]
ontime6	25080.959292829	Sum of GTIs [s]
l2events	75456	Number of level 2 events



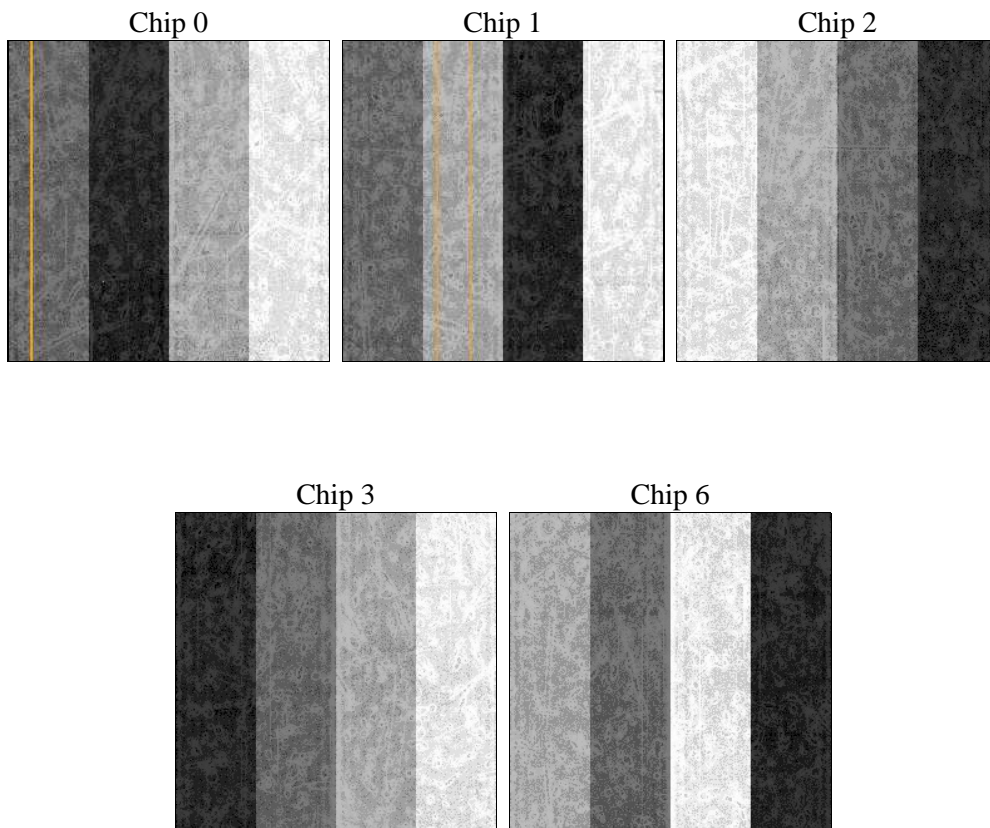
2 OBI

2.1 OBI

2.1.1 Images



2.1.2 Bias



2.1.3 Parameters

obi_num	1	Obi number	sched_exp_time	25000.000000	[s] Scheduled observation exposure time
ascdsver	10.3	Processing system revision	ontime	25084.264323652	Sum of GTIs [s]
caldbver	4.6.4	 	ontime0	25081.000193298	Sum of GTIs [s]
date	2014-12-04T06:47:06	Date and time of file creation	ontime1	25081.041283309	Sum of GTIs [s]
revision	2	Processing version of data	ontime2	25077.941332877	Sum of GTIs [s]
			ontime3	25084.264323652	Sum of GTIs [s]
			ontime6	25080.959292829	Sum of GTIs [s]
			l1events	627133	Number of level 1 events

2.1.4 Events

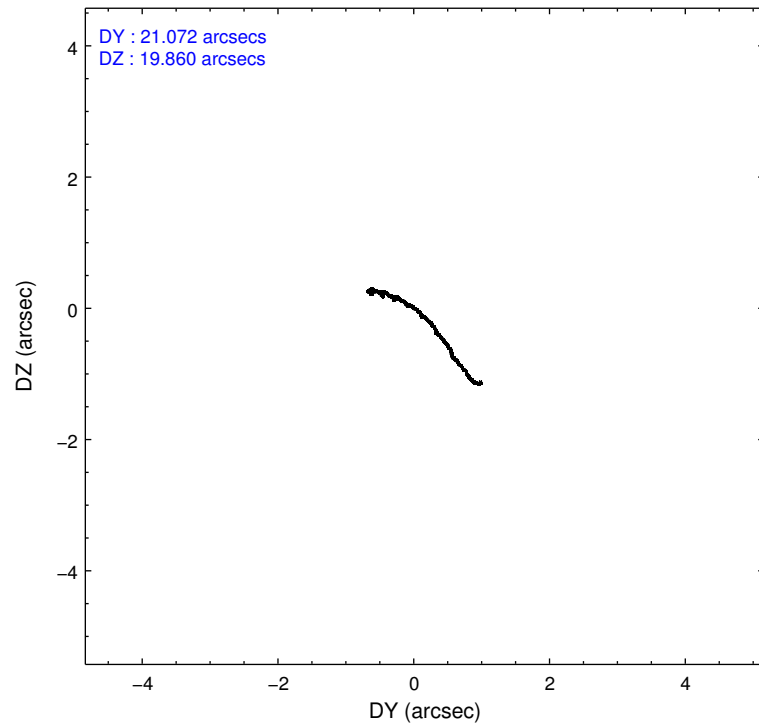
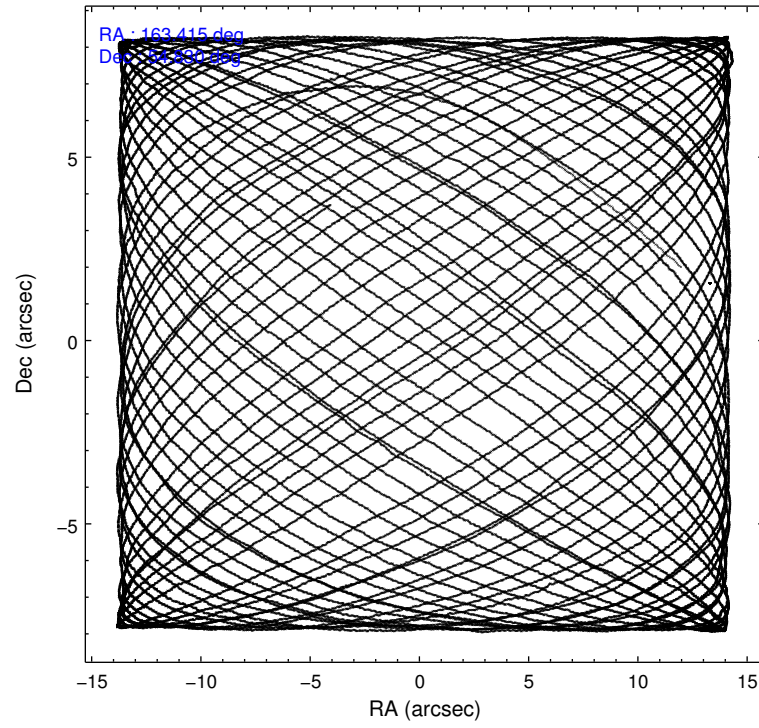
	ccd 0	ccd 1	ccd 2	ccd 3	ccd 6
level 1 events	119064	123911	129673	126507	127978
rejected events	103119	105322	111181	106198	112340
rejected %	86%	84%	85%	83%	87%

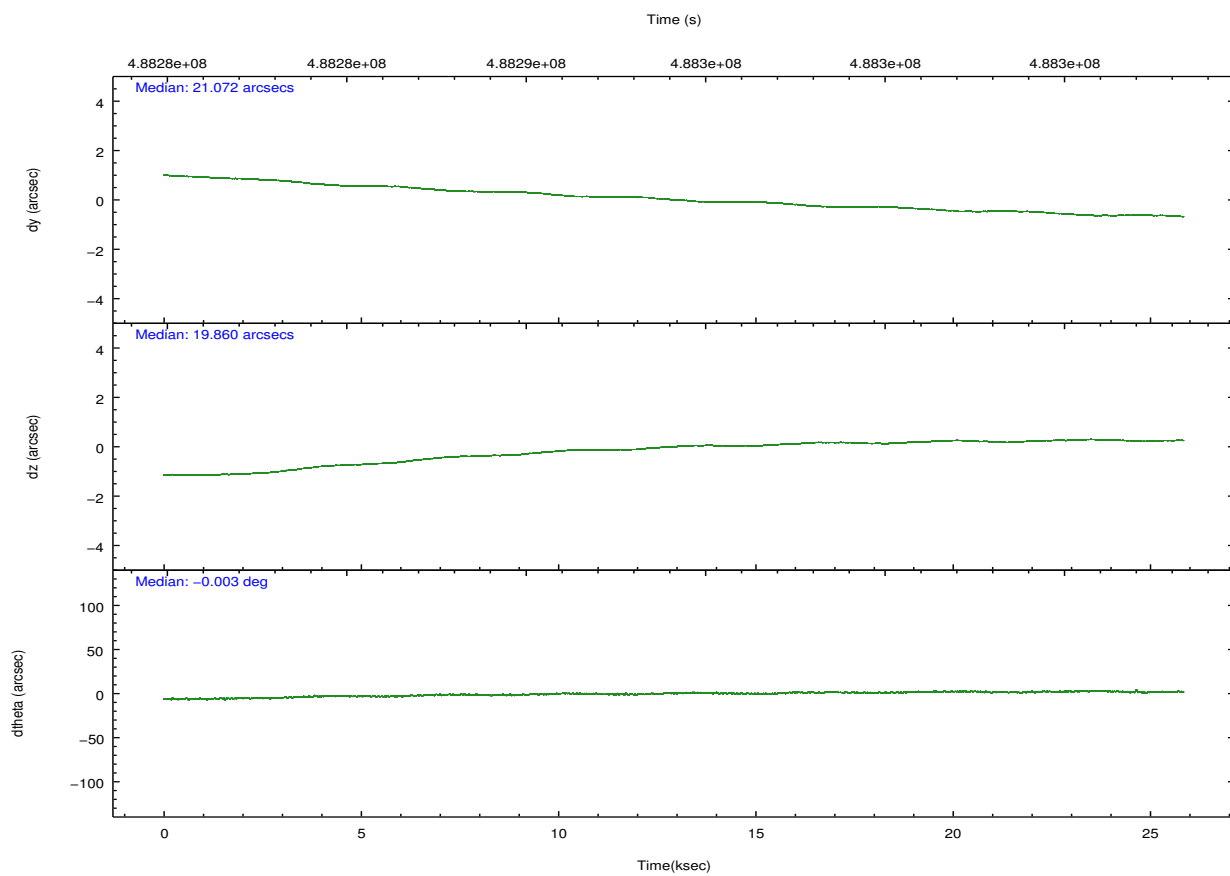
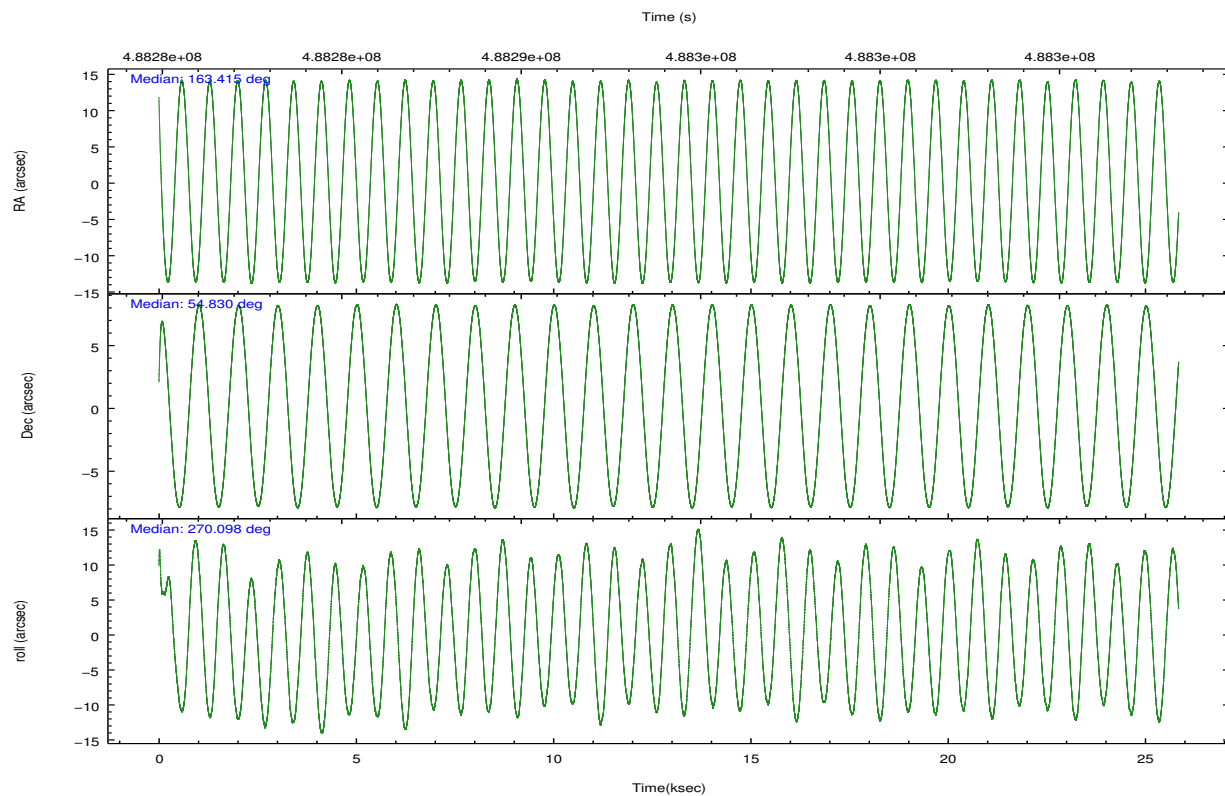
	ccd 0	ccd 1	ccd 2	ccd 3	ccd 6
grade 0 events	5902	7302	8156	9928	5385
	4%	5%	6%	7%	4%
grade 1 events	68	64	108	92	56
	0%	0%	0%	0%	0%
grade 2 events	4025	4279	4204	3754	3574
	3%	3%	3%	2%	2%
grade 3 events	1570	1774	1507	1692	1523
	1%	1%	1%	1%	1%
grade 4 events	1448	1637	1590	1648	1573
	1%	1%	1%	1%	1%
grade 5 events	5853	6327	5365	6783	6456
	4%	5%	4%	5%	5%
grade 6 events	3004	3603	3036	3294	3587
	2%	2%	2%	2%	2%
grade 7 events	97194	98925	105707	99316	105824
	81%	79%	81%	78%	82%

2.2 Compared Parameters

Parameter	Planned	Actual	Parameter	Planned	Actual
Instrument	ACIS	ACIS	Obspar format version number	7	7
Detector	ACIS-01236	ACIS-01236	Obspar file type	PREDICTED	ACTUAL
Grating	NONE	NONE	Obspar update status	NONE	UPDATED
Data mode	VFAINT	VFAINT	CCD I0 on	Y	Y
Observation mode	POINTING	POINTING	CCD I1 on	Y	Y
[deg] Pointing RA	163.390717	163.4148020125982	CCD I2 on	Y	Y
[deg] Pointing Dec	54.853392	54.82964286184587	CCD I3 on	Y	Y
[deg] Pointing Roll	269.917056	270.1060599686625	CCD S0 on	N	N
[mm] SIM focus pos	-0.782348	-0.7809083437167272	CCD S1 on	N	N
[mm] SIM defocus	0	0.001439871863259334	CCD S2 on	O1	Y
[mm] SIM translation stage pos	-231.592463	-231.5960967419932	CCD S3 on	N	N
[mm] SIM translation stage offset	-2	-1.996356260936523	CCD S4 on	N	N
[s] Observation start time (MET)	488282025.184000	488280156.12219	CCD S5 on	N	N
Observation start date	2013-06-22T09:52:38	2013-06-22T09:22:36	Number of optional ACIS chips dropped	0	0
[s] Observation end time (MET)	488307025.184000	488307767.06119	On-chip summing requested	N	N
Observation end date	2013-06-22T16:49:18	2013-06-22T17:02:47	Subarray requested	NONE	NONE
Read mode	TIMED	TIMED	Alternating exposures requested	N	N
			[s] Primary exposure time	0.000000	3.1

2.3 Aspect



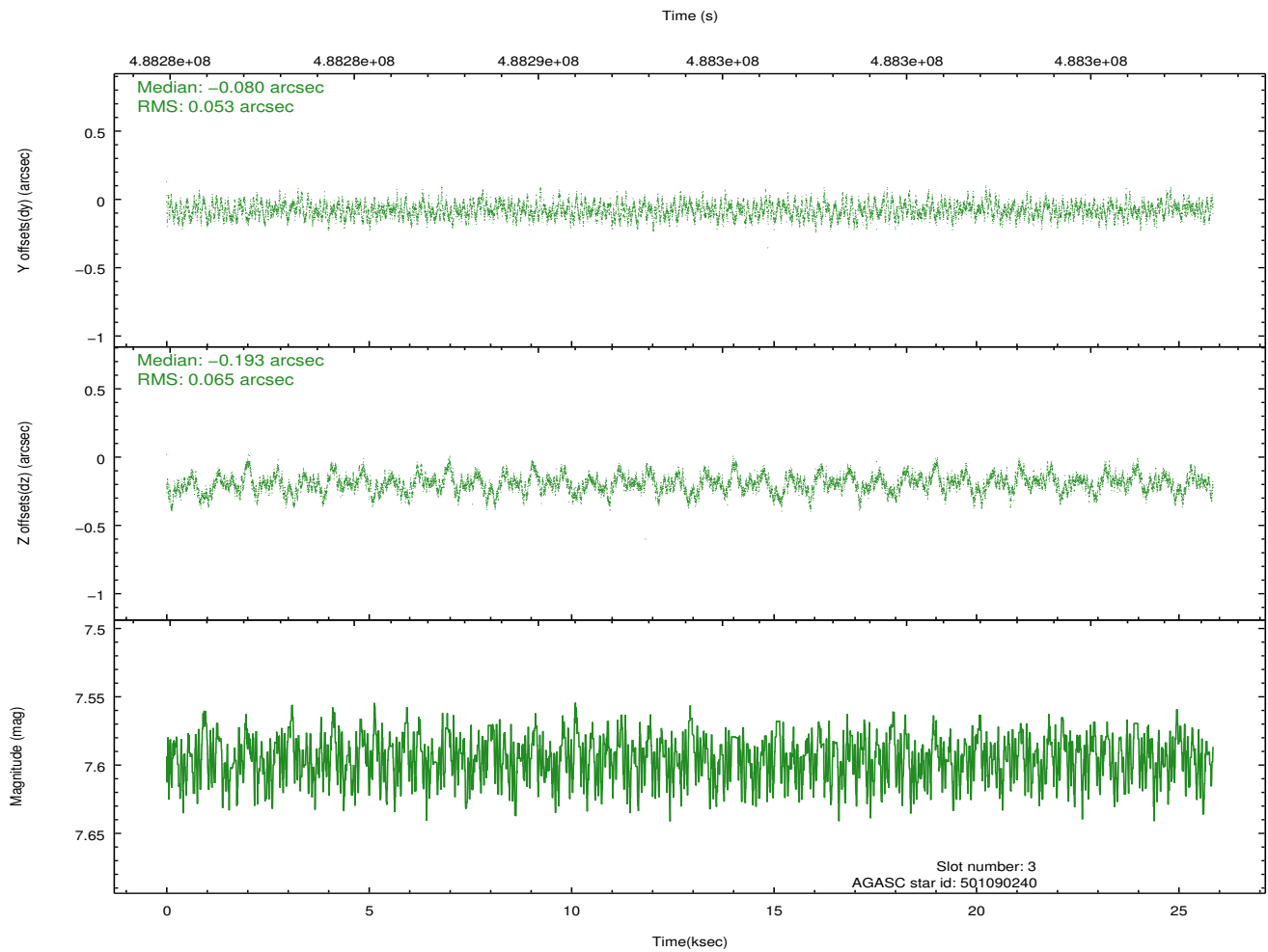
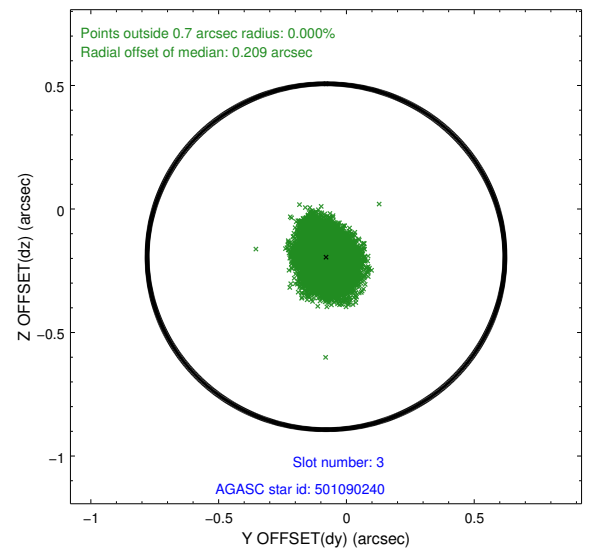
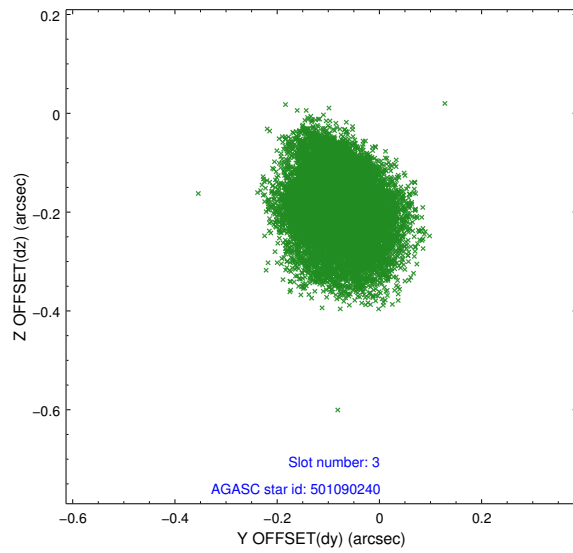


Slot Statistics

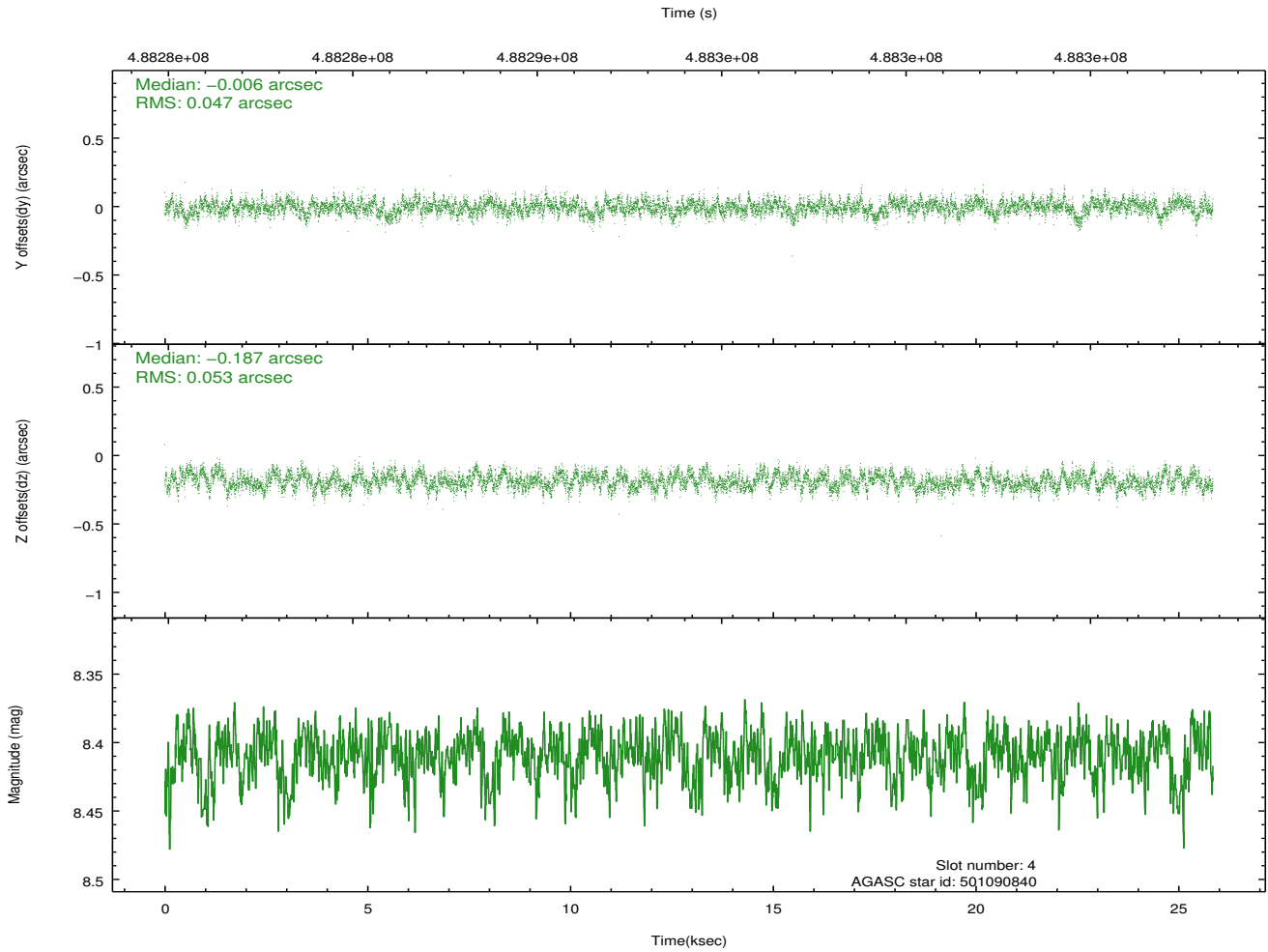
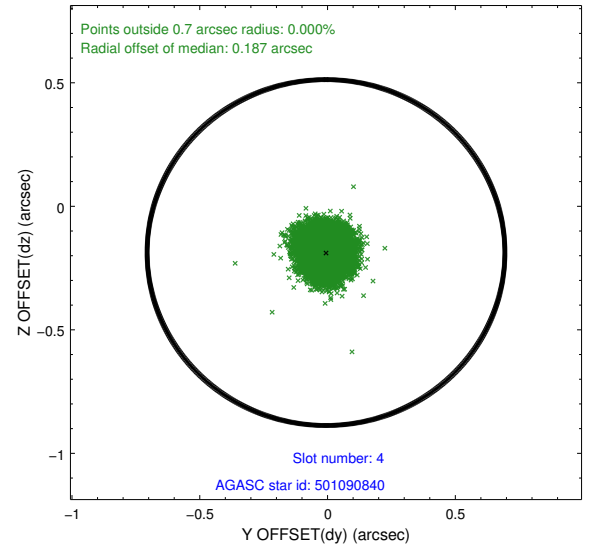
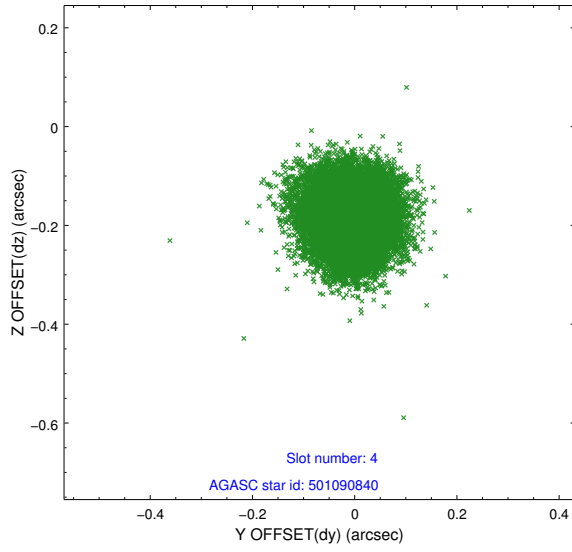
slot	status	used	id	mag	n_pts	med_dy	med_dz	dr1	dr2	ra	dec	mean_y	mean_z
0	FID		ACIS-I-1	7.08	6304	0.061	-0.026	0.016	0.049	0.000000	0.000000	918.19	-884.29
1	FID		ACIS-I-5	7.07	6304	-0.261	0.052	0.014	0.028	0.000000	0.000000	-1830.20	1013.17
2	FID		ACIS-I-6	7.09	6304	0.106	0.045	0.014	0.033	0.000000	0.000000	383.63	1657.82
3	GUIDE	used	501090240	7.59	12609	-0.080	-0.193	0.090	0.144	163.533846	54.800857	189.25	297.38
4	GUIDE	used	501090840	8.41	12599	-0.006	-0.187	0.076	0.120	162.716236	54.745640	383.77	-1400.60
5	GUIDE	used	501482792	8.40	12607	0.050	0.322	0.098	0.155	163.004997	55.355149	-1806.92	-791.72
6	GUIDE	used	501614984	7.99	12606	-0.141	-0.001	0.097	0.149	164.489536	55.429991	-2097.12	2241.22
7	GUIDE	used	501089808	9.25	12559	0.175	0.052	0.113	0.180	162.694918	54.491102	1299.85	-1451.99

2.4 Star Slots

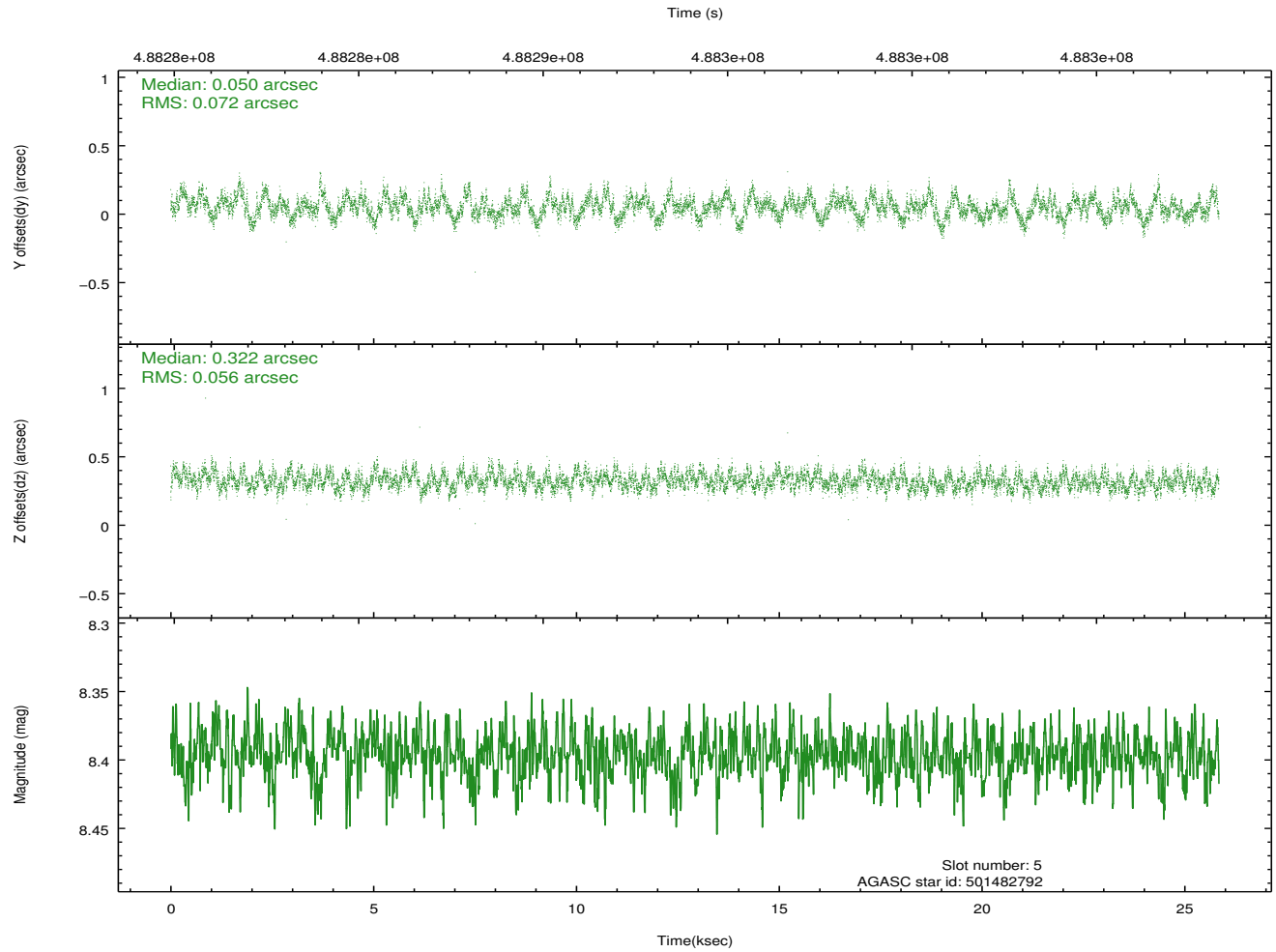
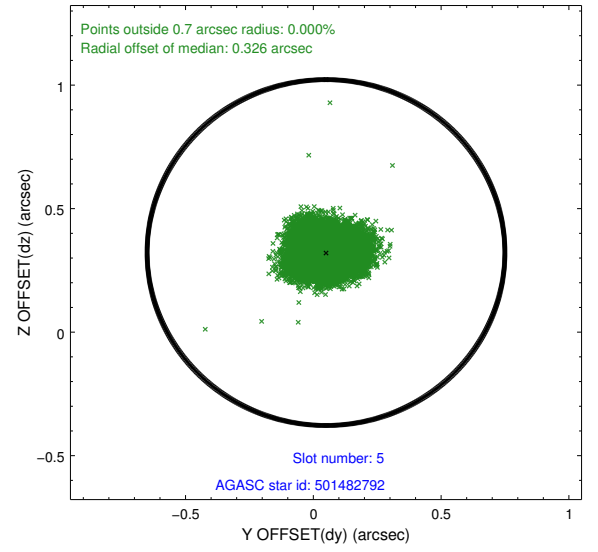
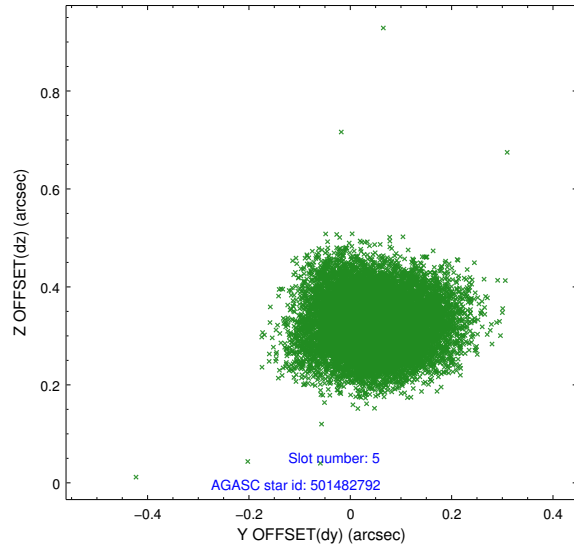
2.4.1 Slot 3



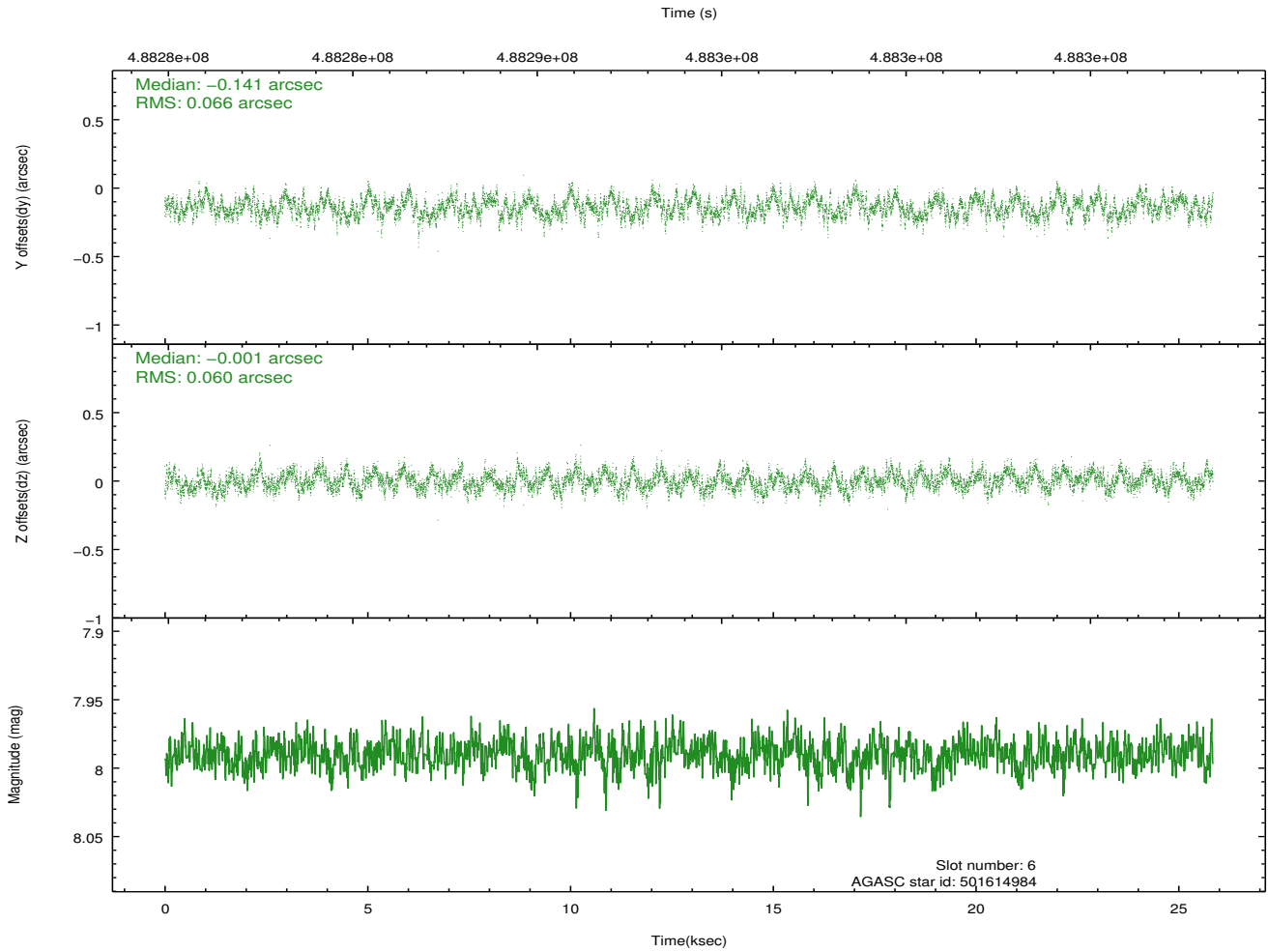
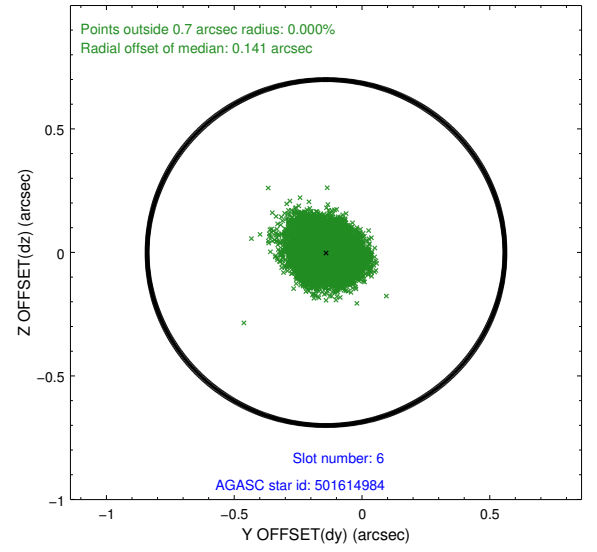
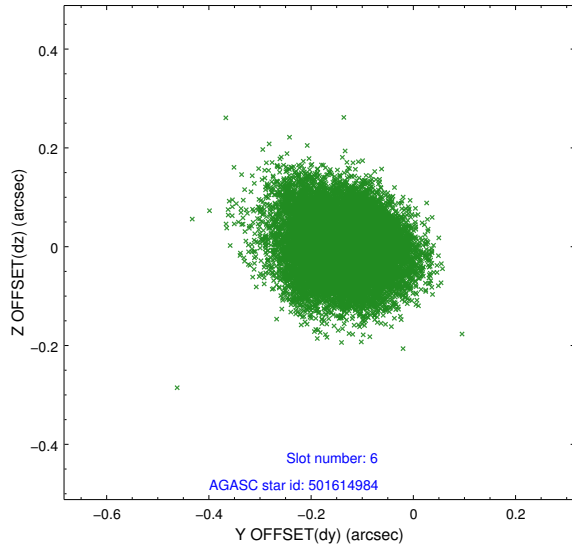
2.4.2 Slot 4



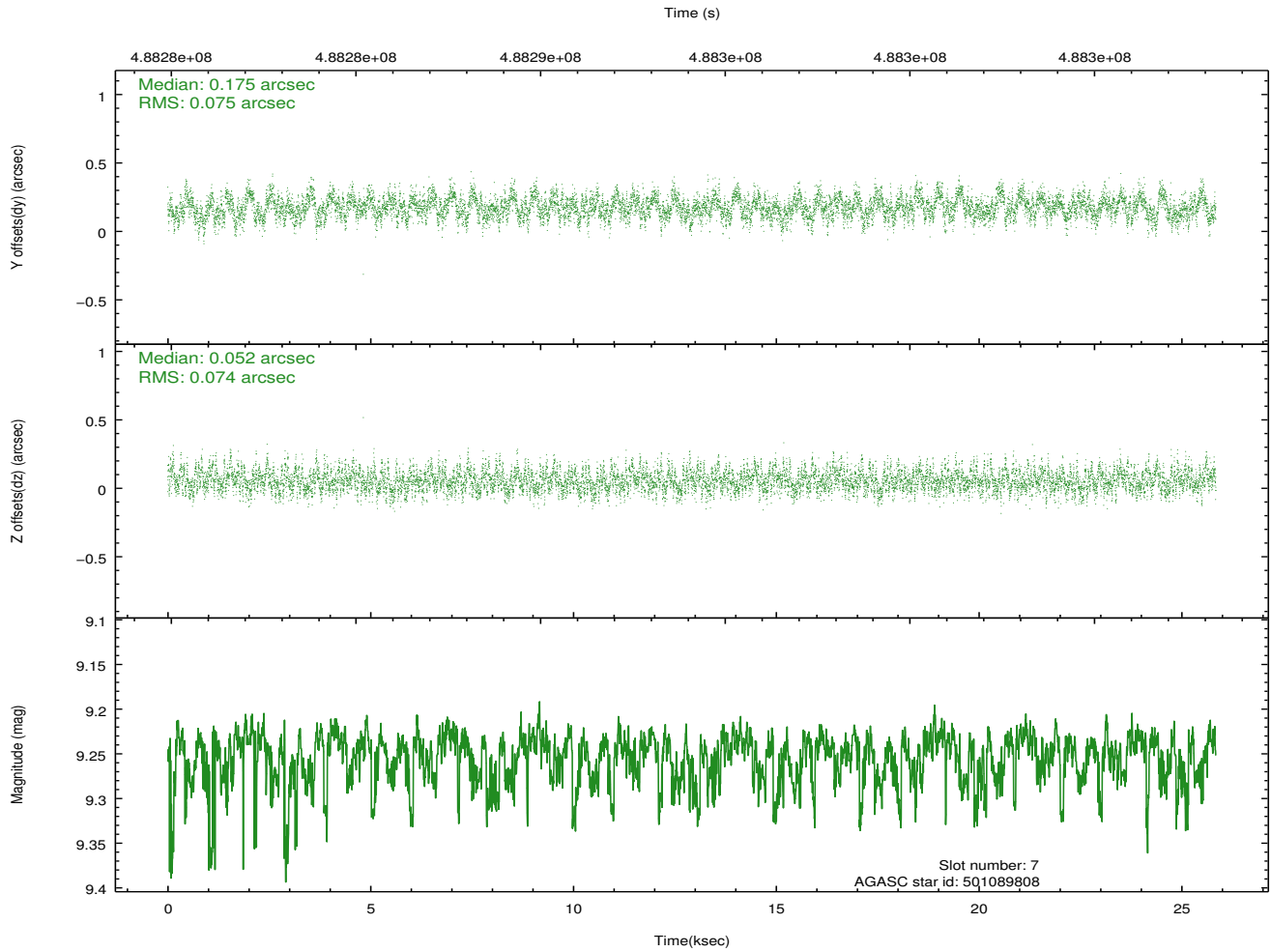
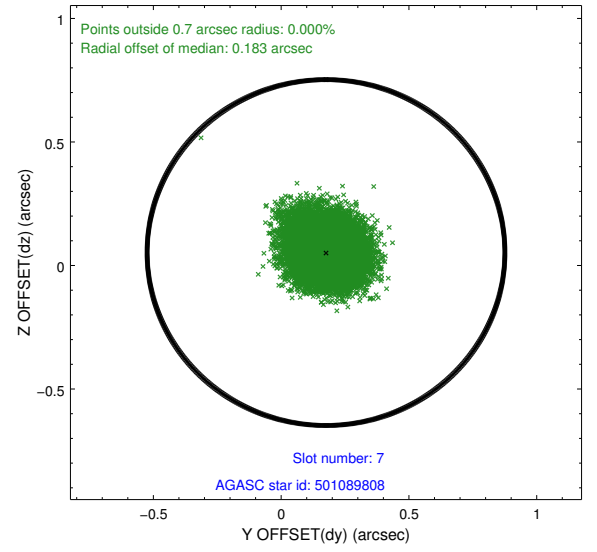
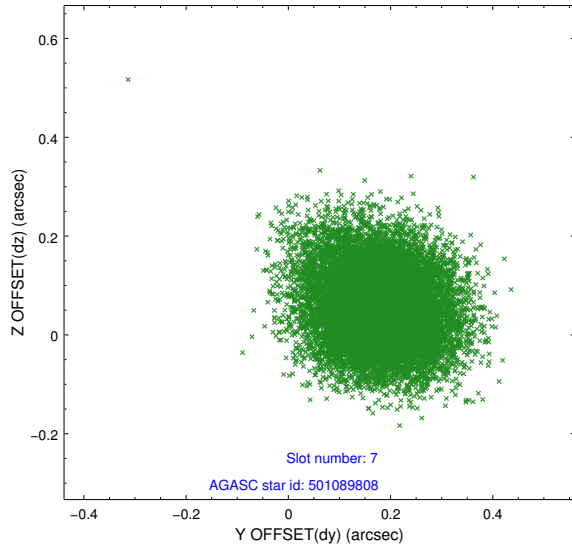
2.4.3 Slot 5



2.4.4 Slot 6

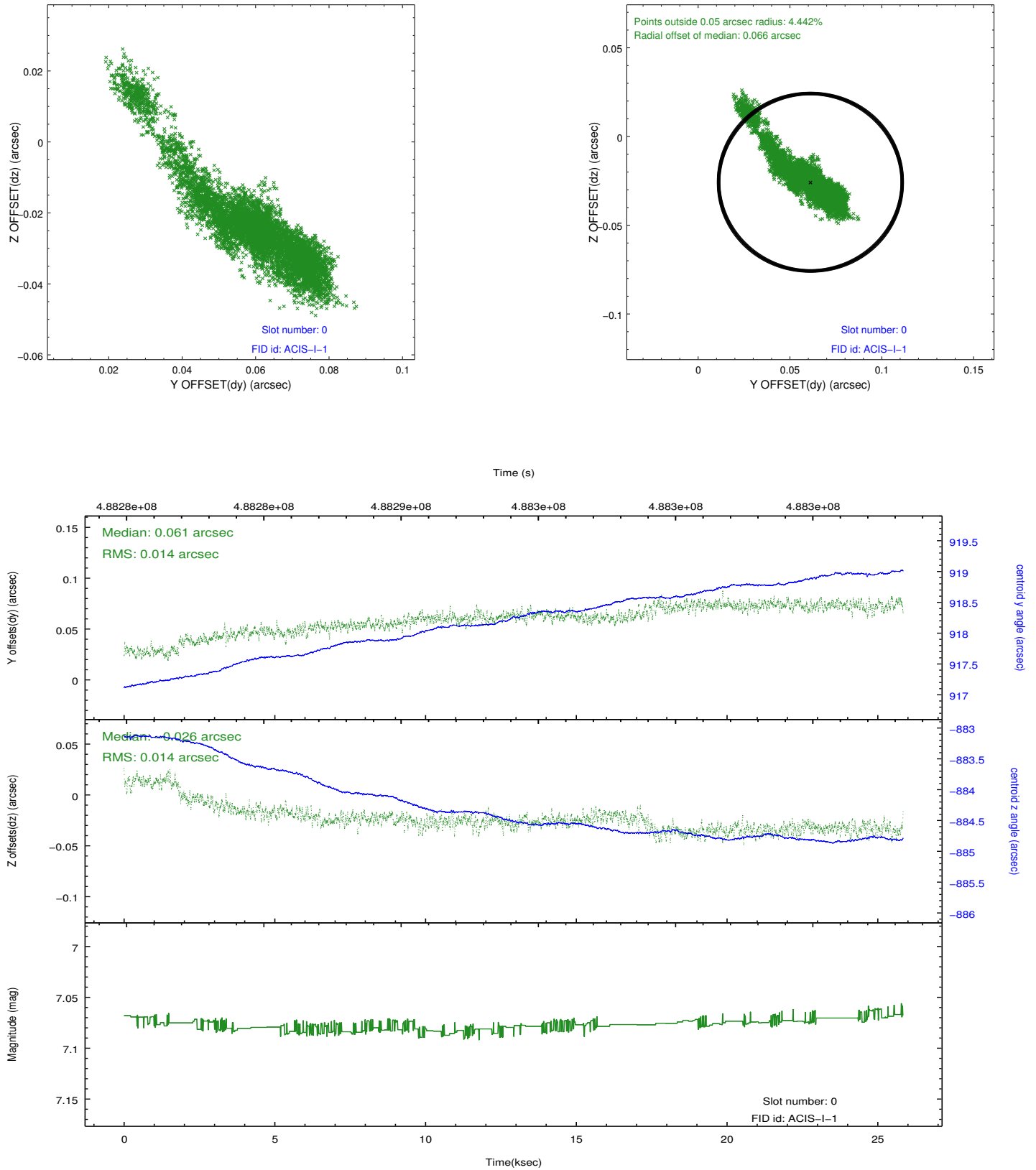


2.4.5 Slot 7

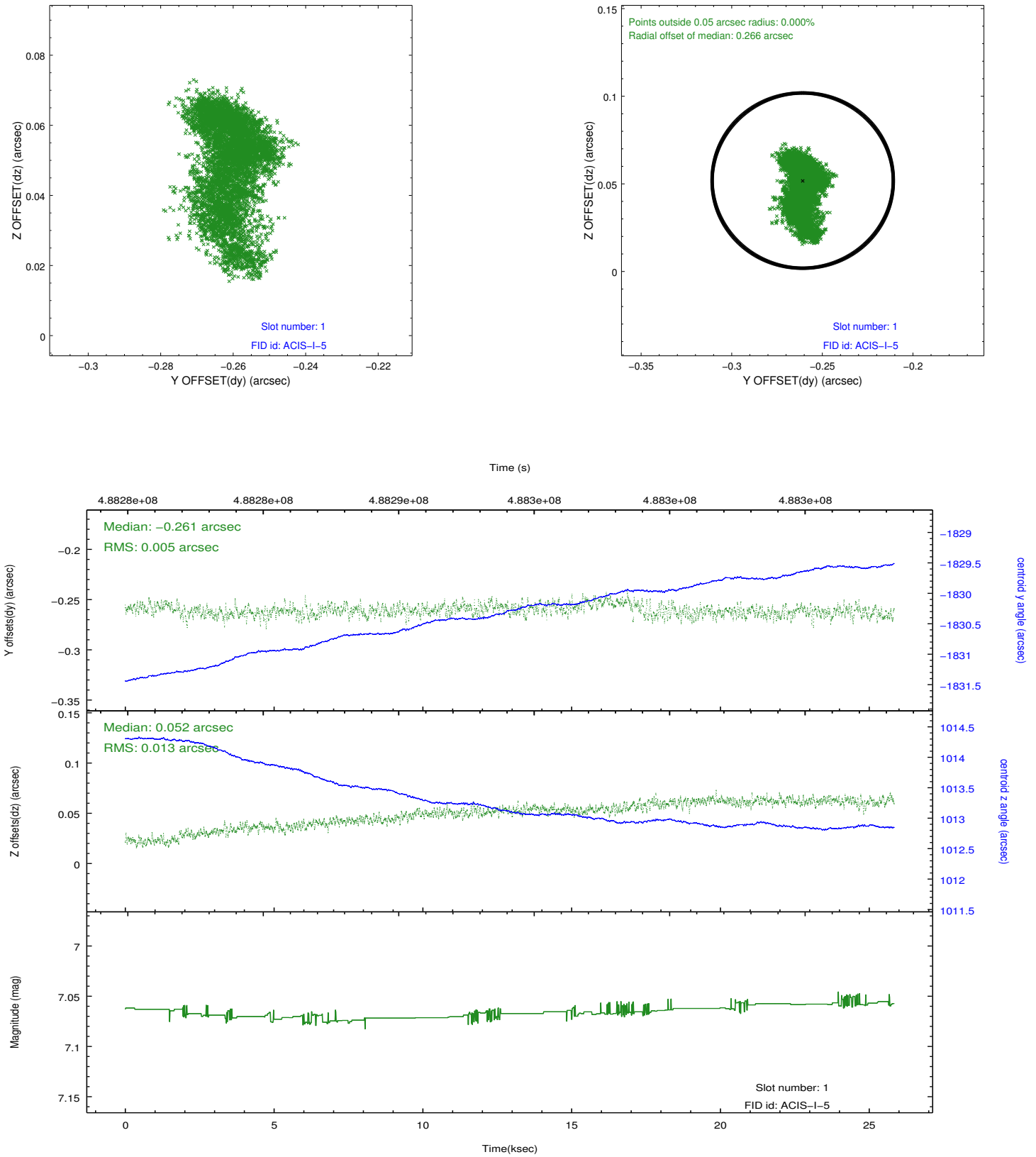


2.5 FID Slots

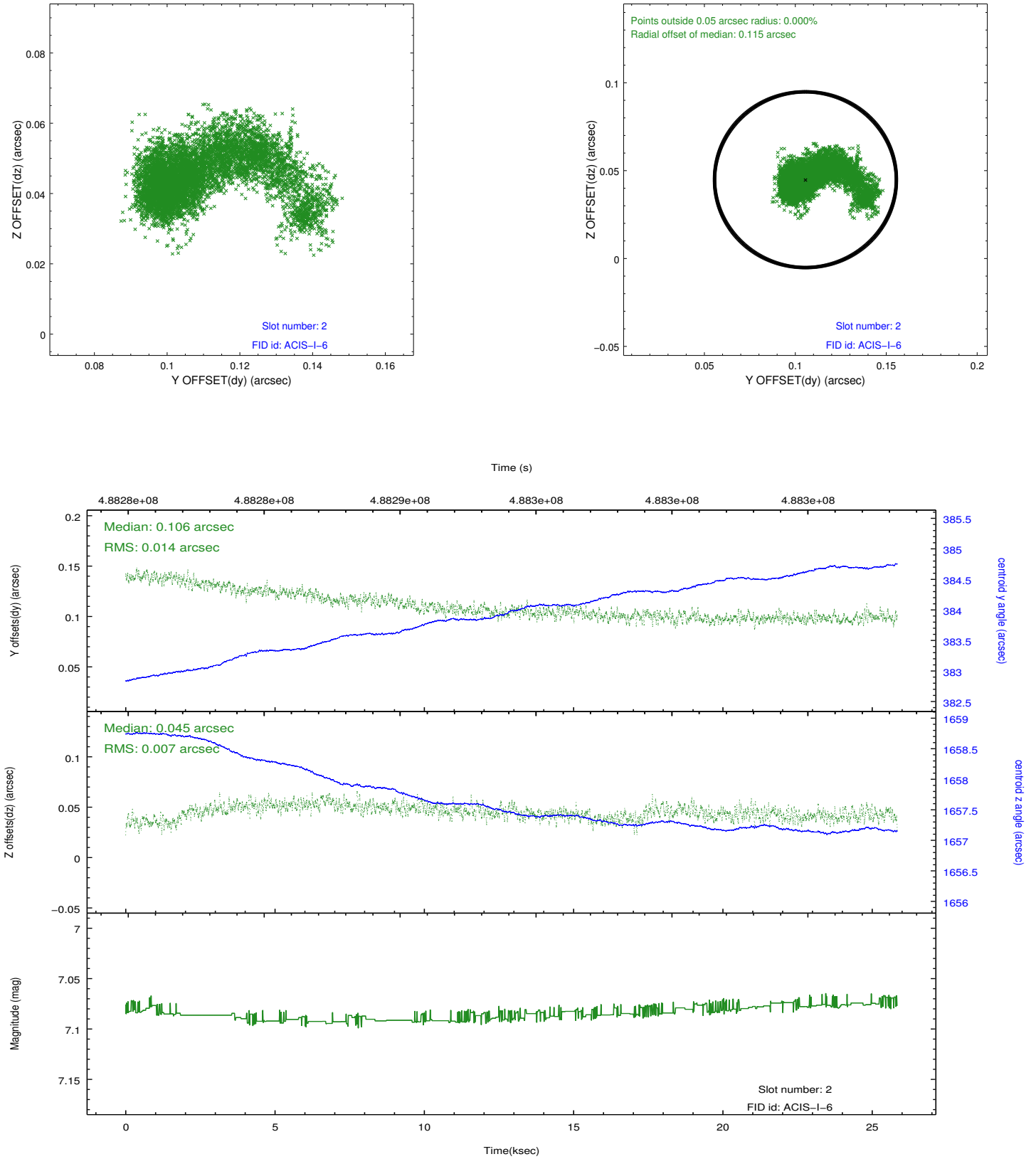
2.5.1 Slot 0



2.5.2 Slot 1



2.5.3 Slot 2



A Summary

A.1 Status

V&V Scientist	Jen Lauer
V&V Date (YYYY-MM-DD)	2014.12.11
V&V Edition	1
V&V Disposition and Status	OK
V&V Charge Time	25.084264323652

A.2 Comments

Roll preference met.

=====

These data have been reprocessed with new aspect alignment calibration files that correct small mean offsets (up to 0.4 arcsecs) and improve overall astrometric accuracy. The new calibration was determined using data from the time period being reprocessed and was performed using cross-correlation of X-ray sources with radio and optical counterparts.