

V&V Reference Report

L2 ASCDS Version : 8.5.1.1

Observation 15155 - L2 Version 2
Chandra X-Ray Center

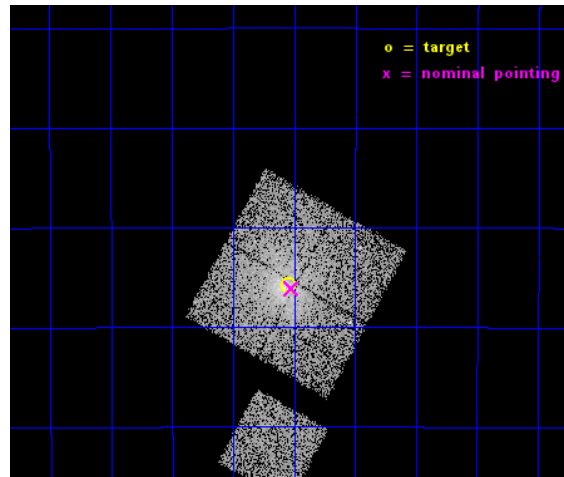
L2 Processing Date : Dec 2 2014

Contents

1	Front	2
2	OBI	3
2.1	OBI	3
2.1.1	Images	3
2.1.2	Bias	3
2.1.3	Parameters	4
2.1.4	Events	4
2.2	Compared Parameters	5
2.3	Aspect	6
2.4	Star Slots	9
2.4.1	Slot 3	9
2.4.2	Slot 4	10
2.4.3	Slot 5	11
2.4.4	Slot 6	12
2.4.5	Slot 7	13
2.5	FID Slots	14
2.5.1	Slot 0	14
2.5.2	Slot 1	15
2.5.3	Slot 2	16
A	Summary	17
A.1	Status	17
A.2	Comments	17

1 Front

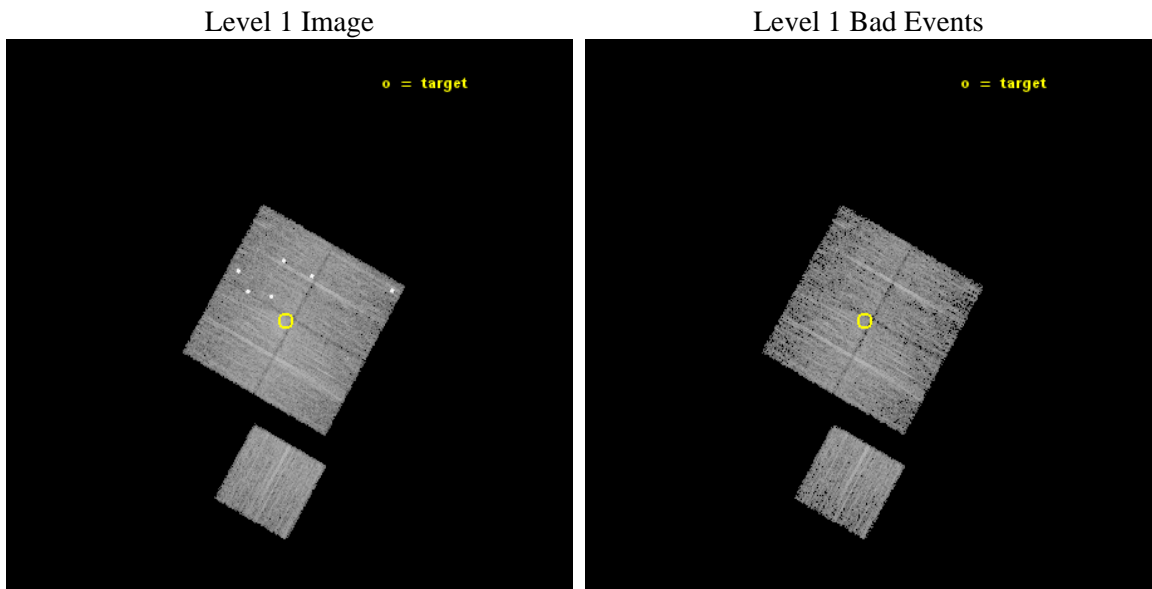
seq_num	801283	Sequence number
obs_id	15155	Observation id
title	COMPLETING eHIFLUGCS: THE ULTIMATE PRECISE AND ACCURATE LOCAL BASELINE	Proposal title
observer	Dr. Thomas Reiprich	Principal investigator
object	A3341	Source name
dtcycle	0	
cycle	P	events from which exps? Prim/Second/Both
ra_targ	81.387083	Observer's specified target RA [deg]
dec_targ	-31.596	Observer's specified target Dec [deg]
ra_nom	81.380578086478	Nominal RA [deg]
dec_nom	-31.601848721605	Nominal Dec [deg]
roll_nom	209.24295474191	Nominal Roll [deg]
revision	2	Processing version of data
ontime	9085.4381607175	Sum of GTIs [s]
livetime	8966.7302225454	Livetime [s]
ontime0	9085.3150407076	Sum of GTIs [s]
ontime1	9085.3560807109	Sum of GTIs [s]
ontime2	9085.3971207142	Sum of GTIs [s]
ontime3	9085.4381607175	Sum of GTIs [s]
ontime6	9085.2740007043	Sum of GTIs [s]
l2events	31989	Number of level 2 events



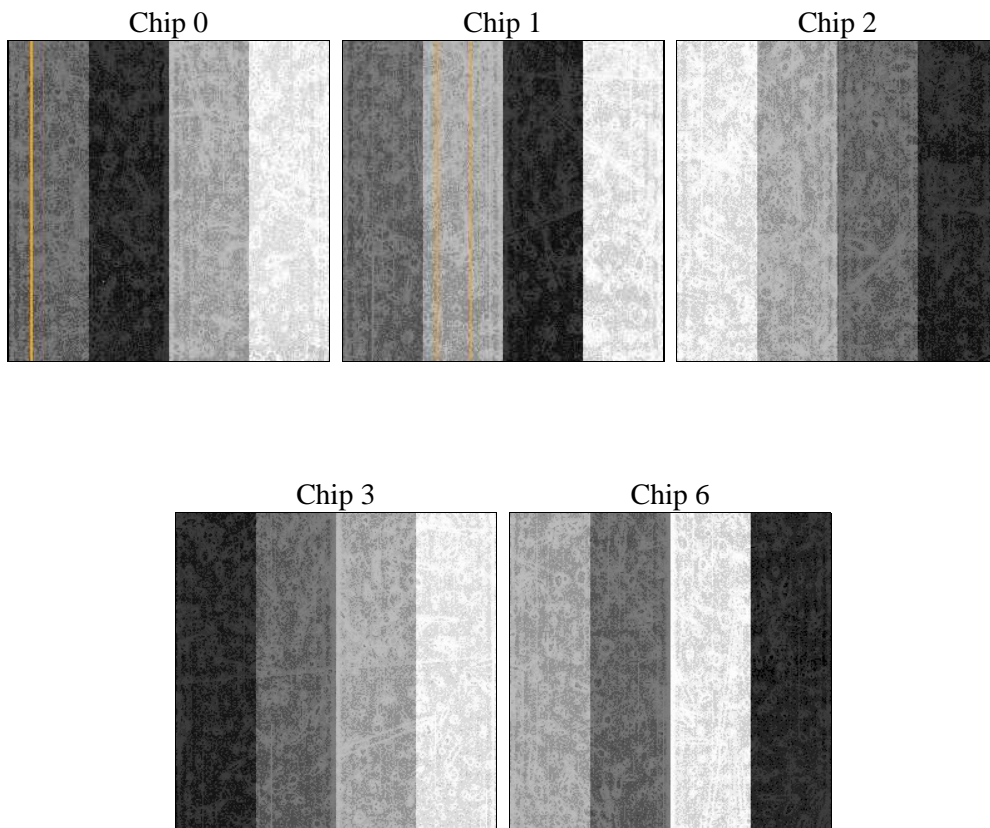
2 OBI

2.1 OBI

2.1.1 Images



2.1.2 Bias



2.1.3 Parameters

obi_num	0	Obi number	sched_exp_time	9000.000000	[s] Scheduled observation exposure time
ascdsver	10.3	Processing system revision	ontime	9085.4381607175	Sum of GTIs [s]
caldsver	4.6.4	 	ontime0	9085.3150407076	Sum of GTIs [s]
date	2014-12-03T03:52:20	Date and time of file creation	ontime1	9085.3560807109	Sum of GTIs [s]
revision	2	Processing version of data	ontime2	9085.3971207142	Sum of GTIs [s]
			ontime3	9085.4381607175	Sum of GTIs [s]
			ontime6	9085.2740007043	Sum of GTIs [s]
			l1events	249782	Number of level 1 events

2.1.4 Events

	ccd 0	ccd 1	ccd 2	ccd 3	ccd 6
level 1 events	43866	57269	50341	49654	48652
rejected events	33807	35259	42191	40527	42360
rejected %	77%	61%	83%	81%	87%

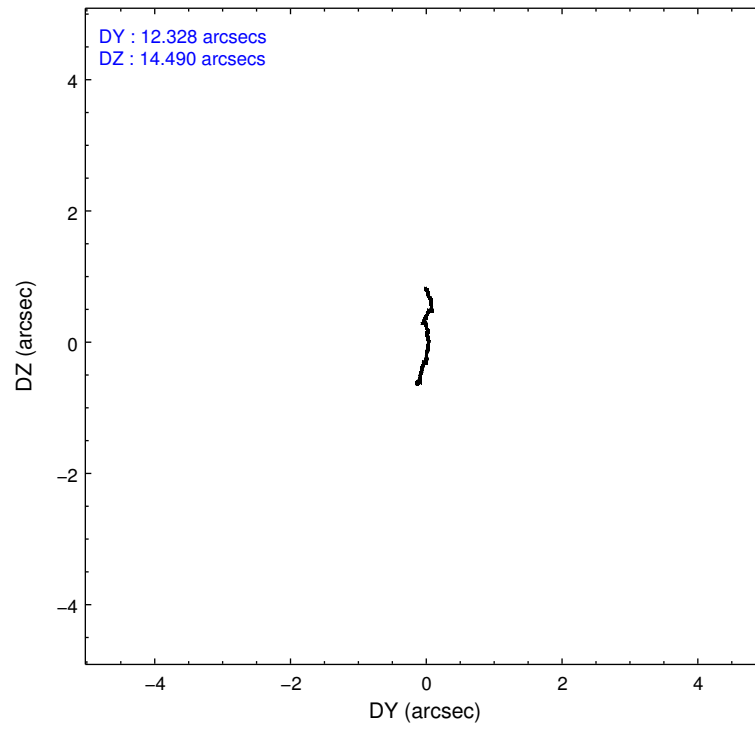
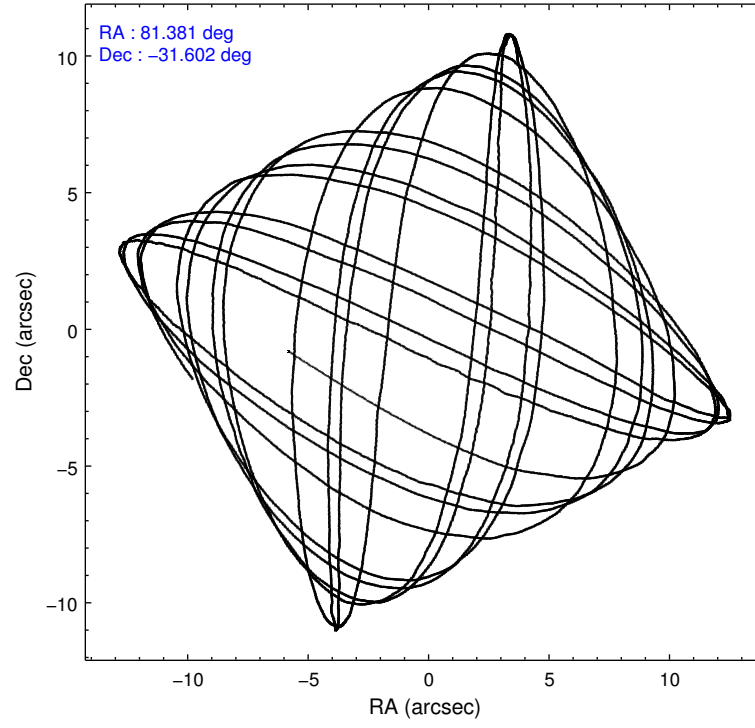
	ccd 0	ccd 1	ccd 2	ccd 3	ccd 6
grade 0 events	3322	12326	4251	5289	2529
	7%	21%	8%	10%	5%
grade 1 events	27	59	27	32	31
	0%	0%	0%	0%	0%
grade 2 events	4612	7283	1708	1537	1533
	10%	12%	3%	3%	3%
grade 3 events	561	558	568	622	544
	1%	0%	1%	1%	1%
grade 4 events	497	585	663	602	502
	1%	1%	1%	1%	1%
grade 5 events	1576	1699	1482	1777	1665
	3%	2%	2%	3%	3%
grade 6 events	1073	1271	970	1080	1186
	2%	2%	1%	2%	2%
grade 7 events	32198	33488	40672	38715	40662
	73%	58%	80%	77%	83%

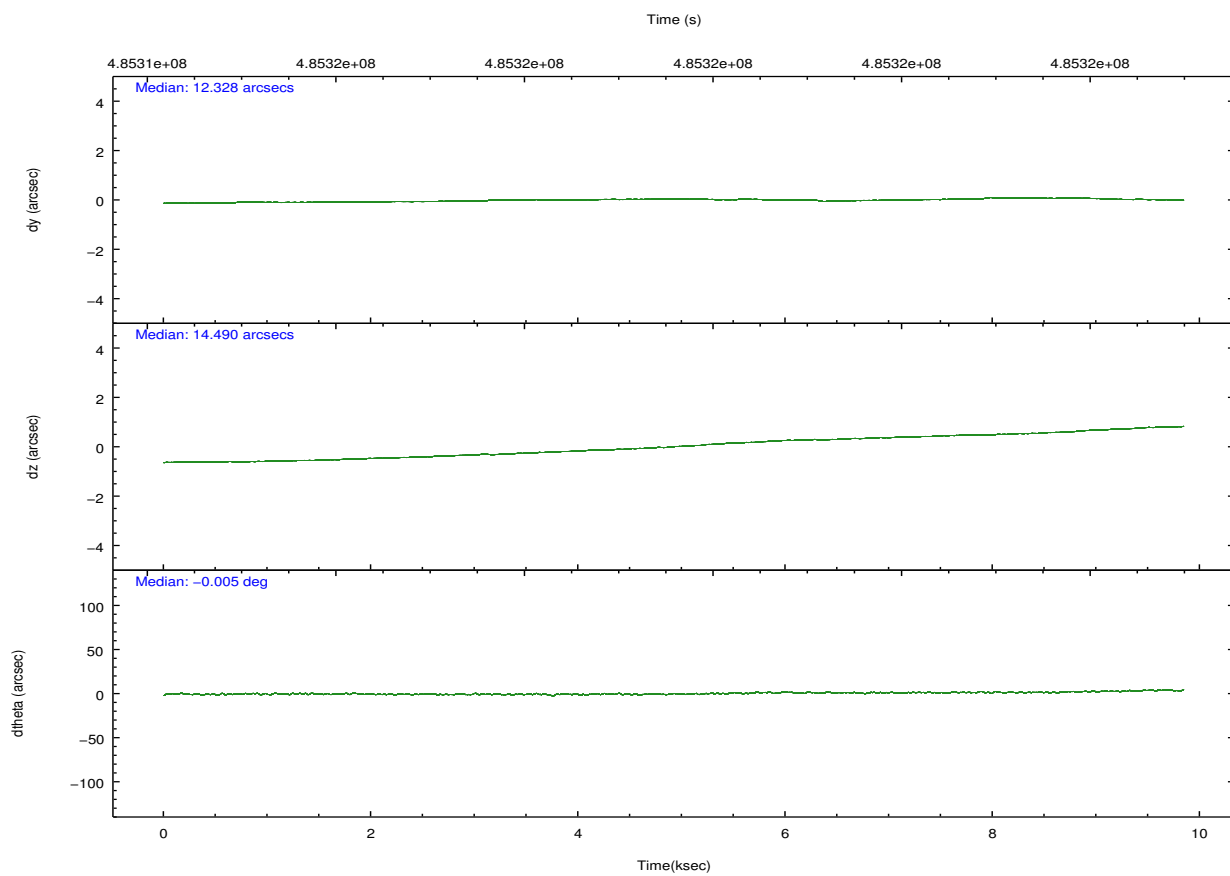
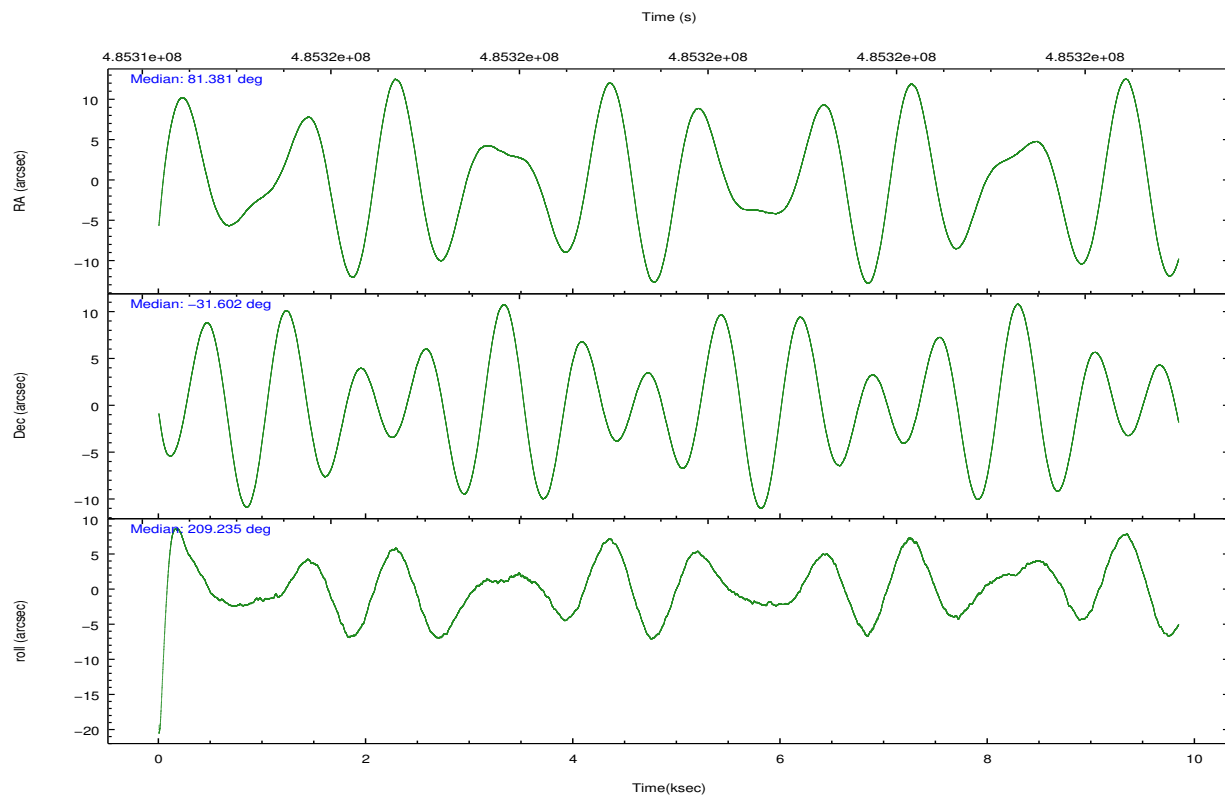
2.2 Compared Parameters

Parameter	Planned	Actual
Instrument	ACIS	ACIS
Detector	ACIS-01236	ACIS-01236
Grating	NONE	NONE
Data mode	VFAINT	VFAINT
Observation mode	POINTING	POINTING
[deg] Pointing RA	81.396953	81.38057808647835
[deg] Pointing Dec	-31.578174	-31.60184872160483
[deg] Pointing Roll	209.042871	209.242954741913
[mm] SIM focus pos	-0.782348	-0.7809083437167272
[mm] SIM defocus	0	0.001439871863259334
[mm] SIM translation stage pos	-233.592463	-233.5874344608287
[mm] SIM translation stage offset	0	-0.005018542100998502
[s] Observation start time (MET)	485315505.184000	485313683.4737
Observation start date	2013-05-19T01:50:38	2013-05-19T01:21:23
[s] Observation end time (MET)	485324505.184000	485325326.96183
Observation end date	2013-05-19T04:20:38	2013-05-19T04:35:26
Read mode	TIMED	TIMED

Parameter	Planned	Actual
Obspar format version number	7	7
Obspar file type	PREDICTED	ACTUAL
Obspar update status	NONE	UPDATED
CCD I0 on	Y	Y
CCD I1 on	Y	Y
CCD I2 on	Y	Y
CCD I3 on	Y	Y
CCD S0 on	N	N
CCD S1 on	N	N
CCD S2 on	O1	Y
CCD S3 on	N	N
CCD S4 on	N	N
CCD S5 on	N	N
Number of optional ACIS chips dropped	0	0
On-chip summing requested	N	N
Subarray requested	NONE	NONE
Alternating exposures requested	N	N
[s] Primary exposure time	0.000000	3.1

2.3 Aspect



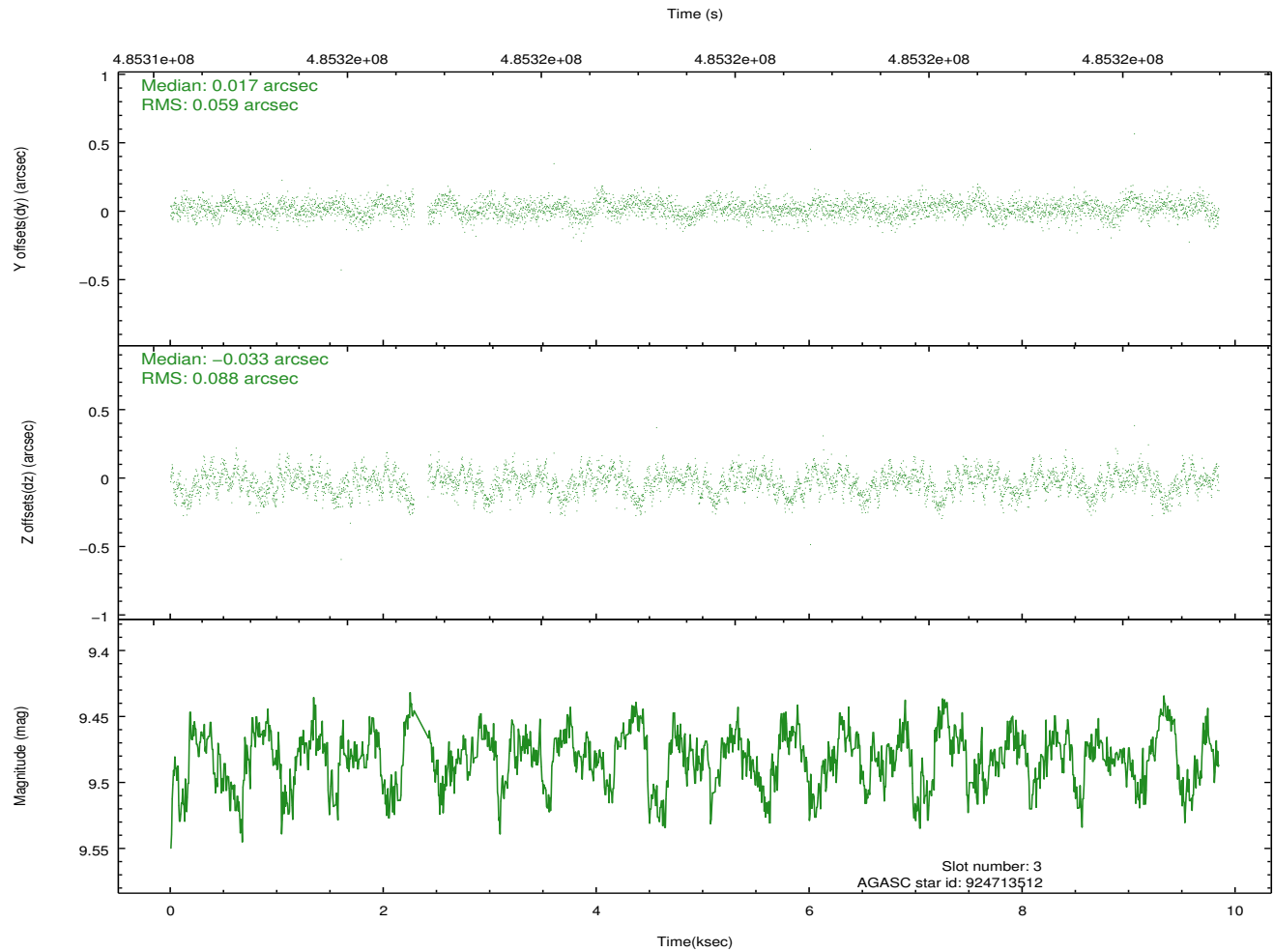
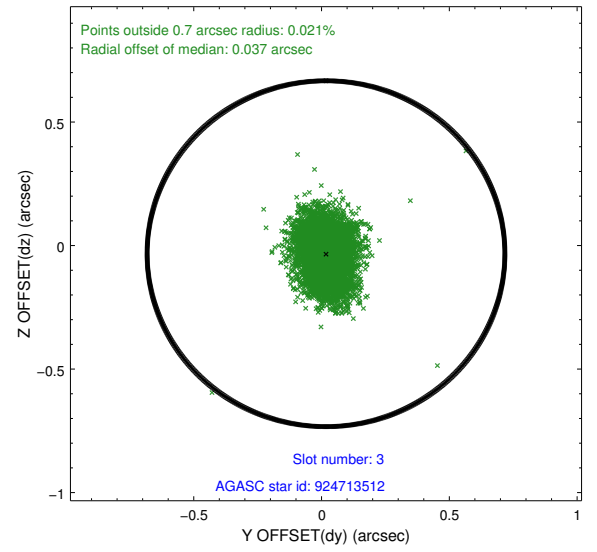
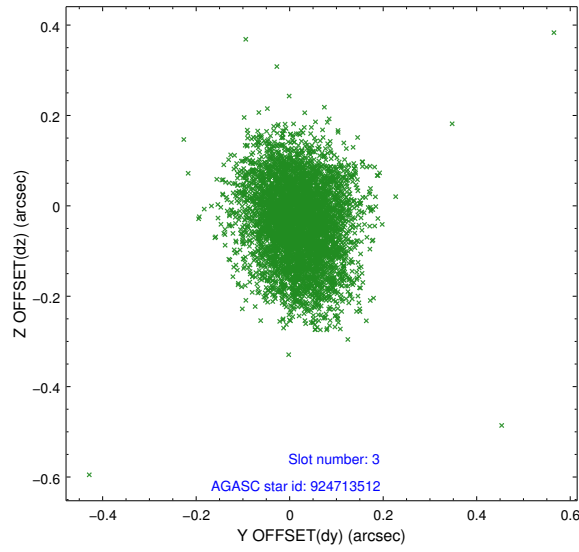


Slot Statistics

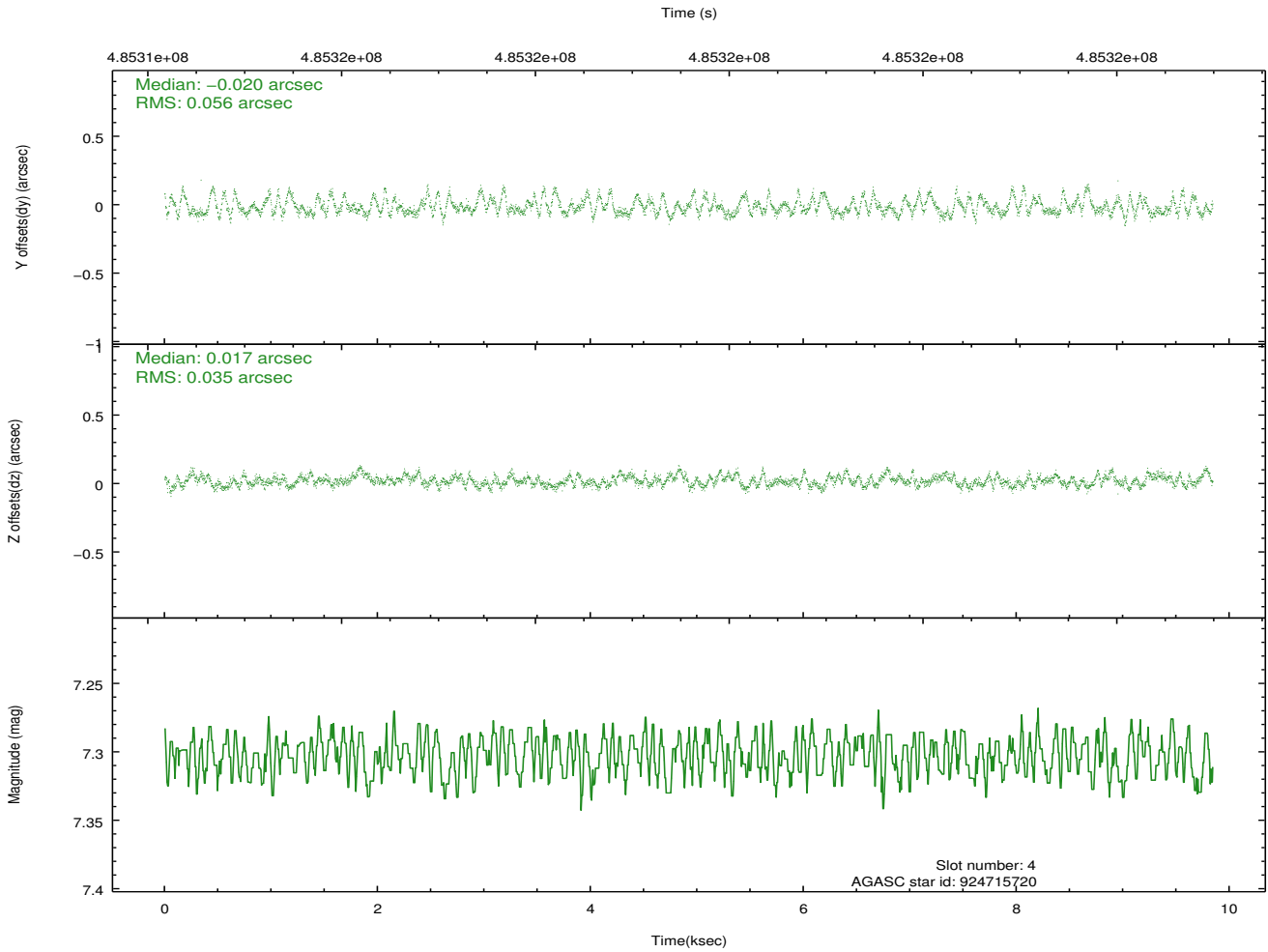
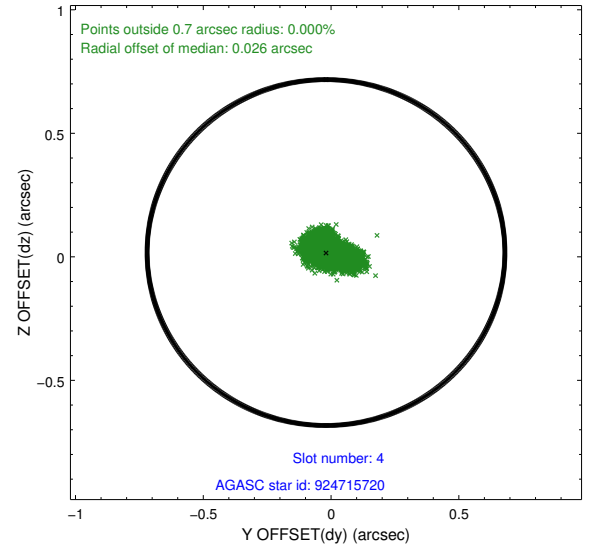
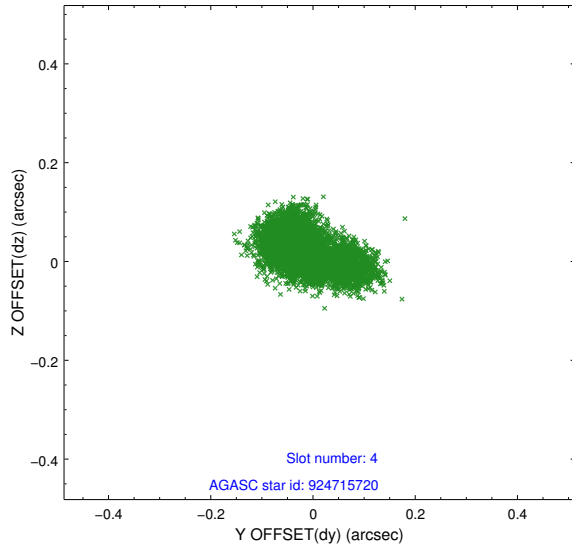
slot	status	used	id	mag	n_pts	med_dy	med_dz	dr1	dr2	ra	dec	mean_y	mean_z
0	FID		ACIS-I-1	7.14	2401	0.054	0.022	0.010	0.015	0.000000	0.000000	927.31	-838.04
1	FID		ACIS-I-2	7.04	2399	-0.055	-0.080	0.013	0.020	0.000000	0.000000	-766.58	-844.92
2	FID		ACIS-I-5	7.12	2402	-0.091	0.130	0.010	0.016	0.000000	0.000000	-1821.43	1059.17
3	GUIDE	used	924713512	9.48	4733	0.017	-0.033	0.112	0.182	81.334964	-31.802843	558.17	615.46
4	GUIDE	used	924715720	7.30	4802	-0.020	0.017	0.069	0.119	81.777730	-31.566168	-1040.35	530.41
5	GUIDE	used	925237536	8.70	4801	0.133	-0.072	0.090	0.144	81.004062	-32.034482	1846.92	856.53
6	GUIDE	used	923810616	9.10	4798	0.014	0.044	0.089	0.149	80.862520	-31.352700	1044.90	-1503.30
7	GUIDE	used	924720896	7.69	4802	-0.165	0.047	0.082	0.135	82.074503	-31.840004	-1350.81	1835.46

2.4 Star Slots

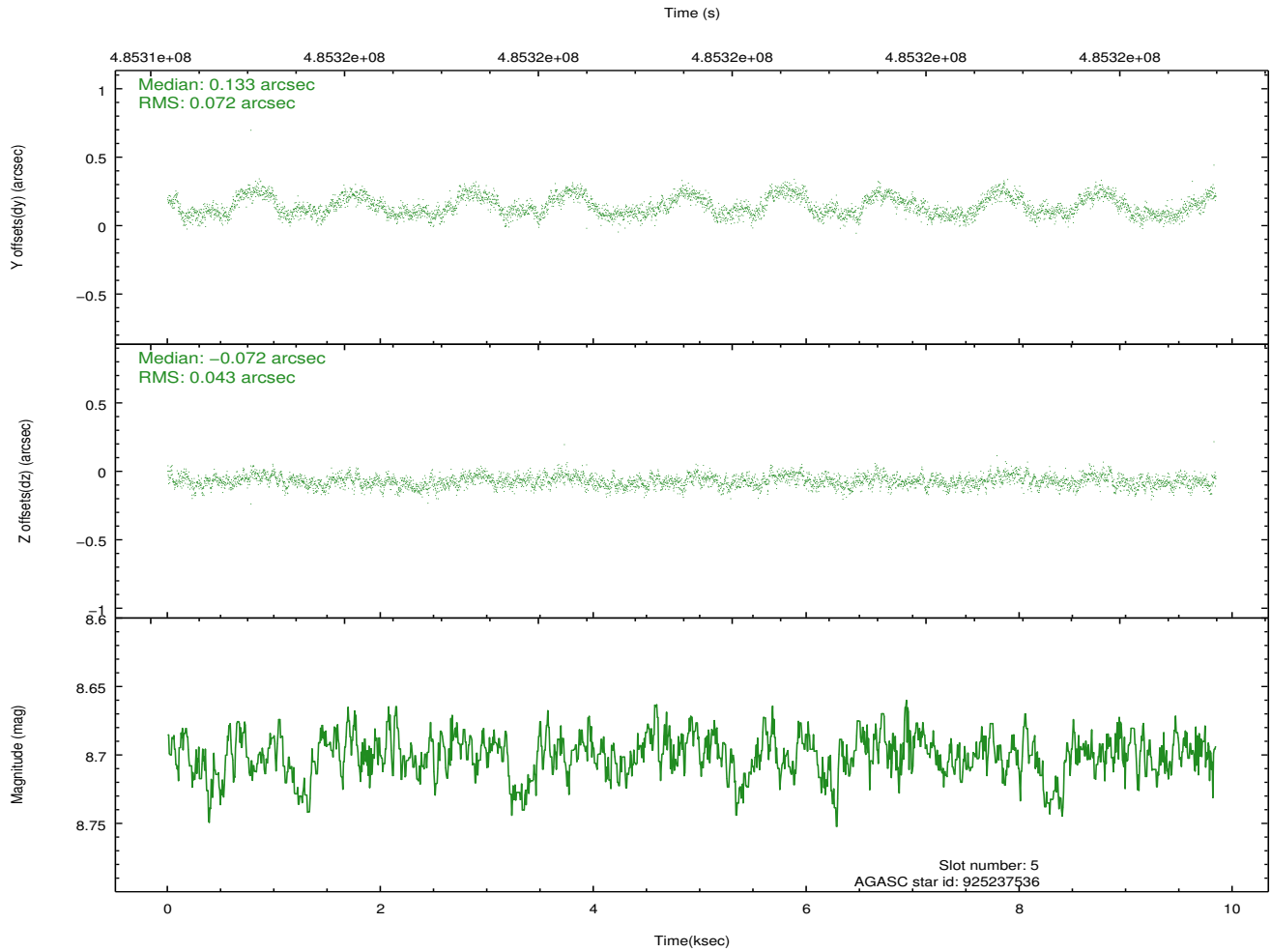
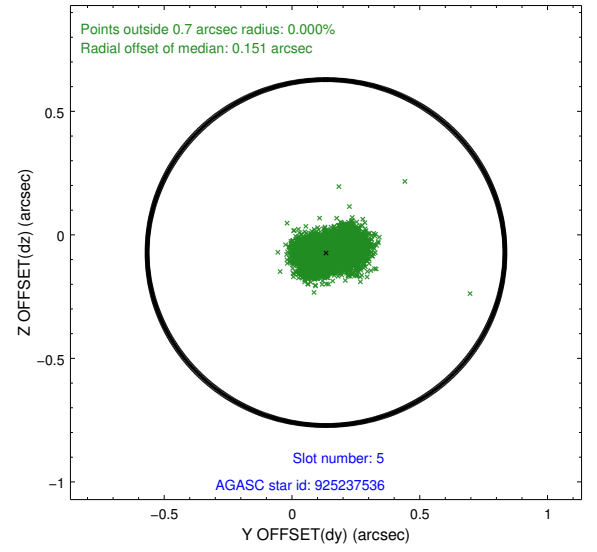
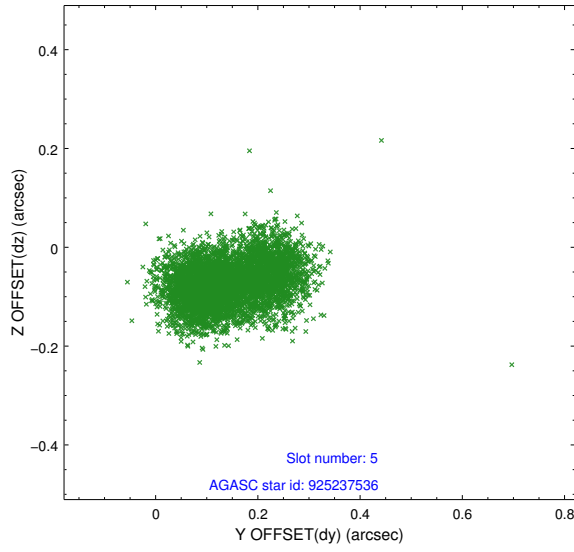
2.4.1 Slot 3



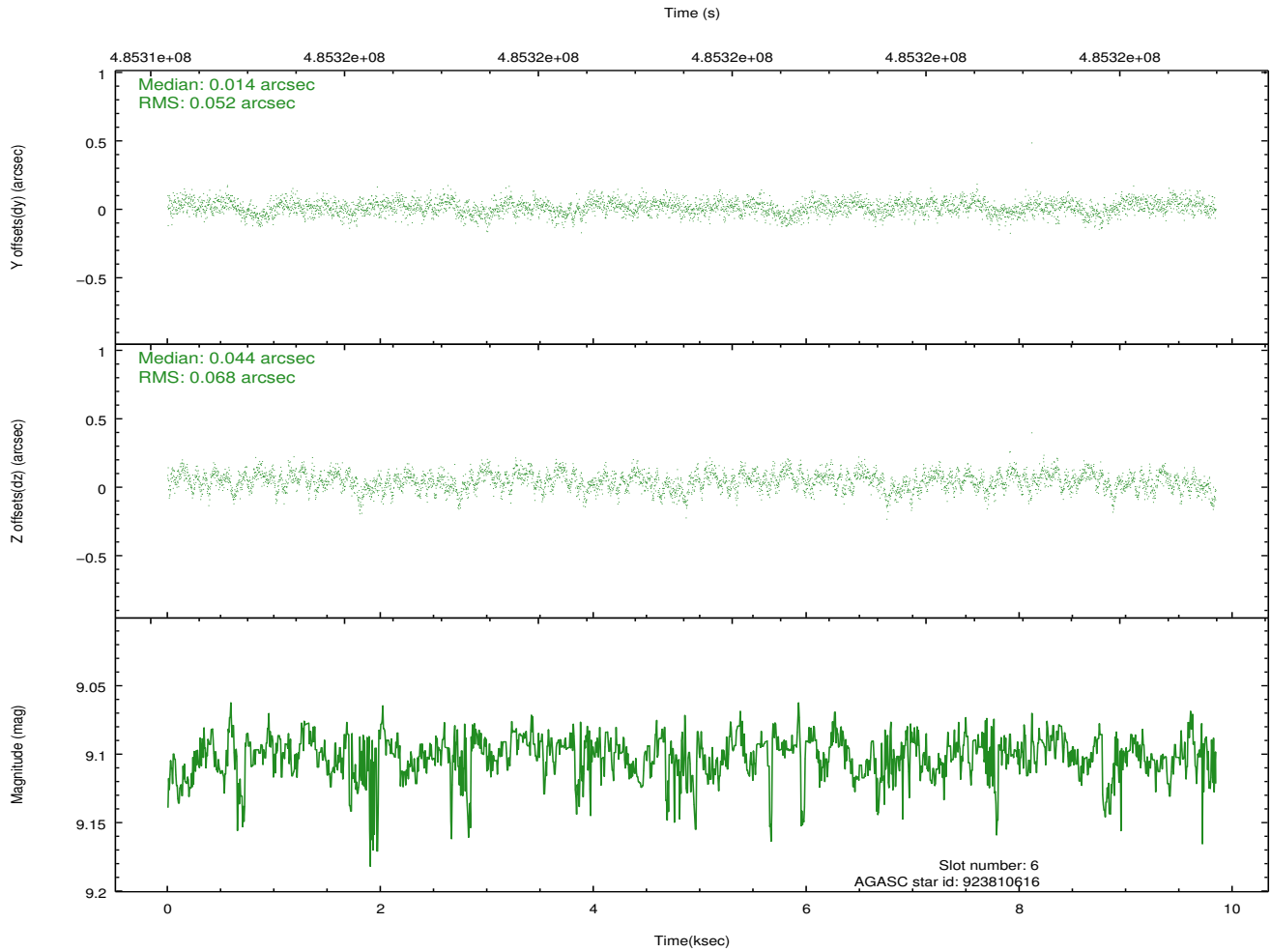
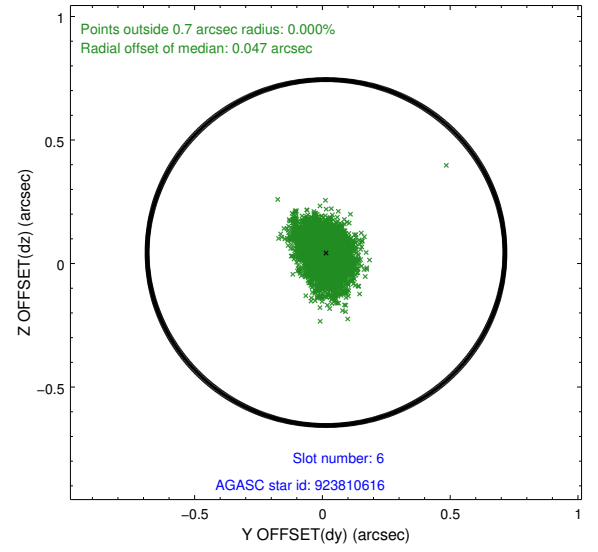
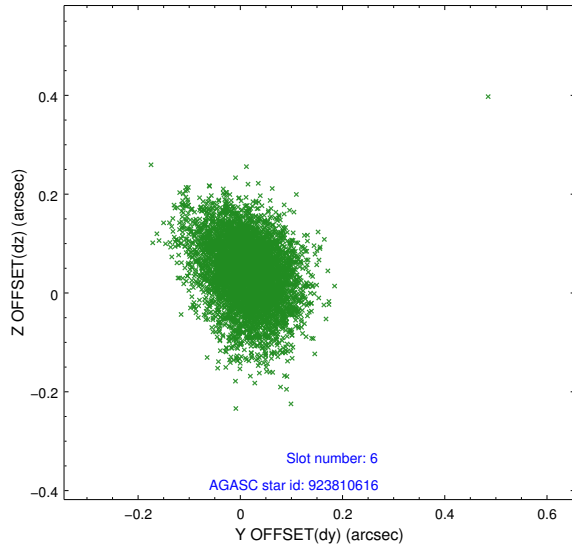
2.4.2 Slot 4



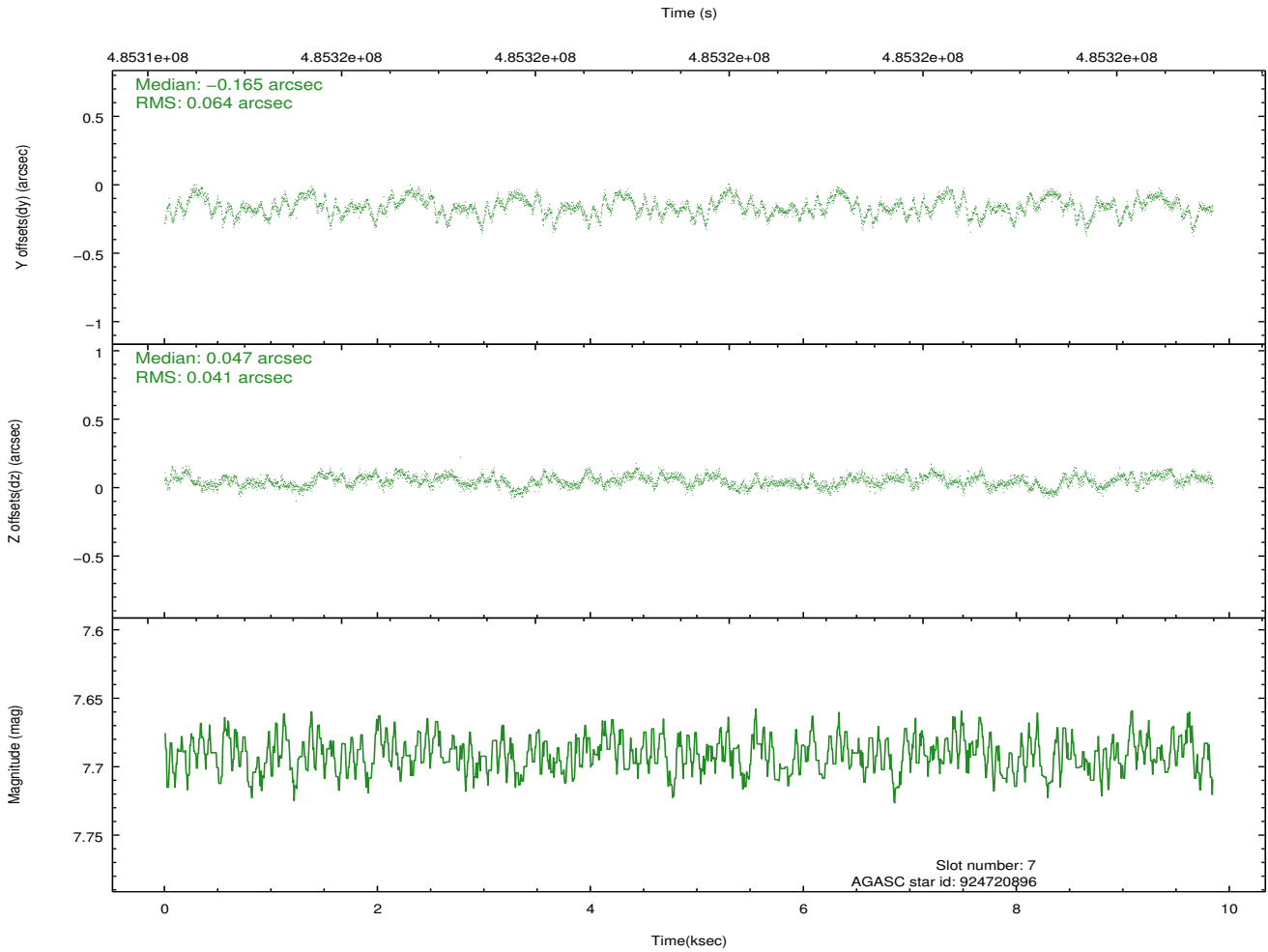
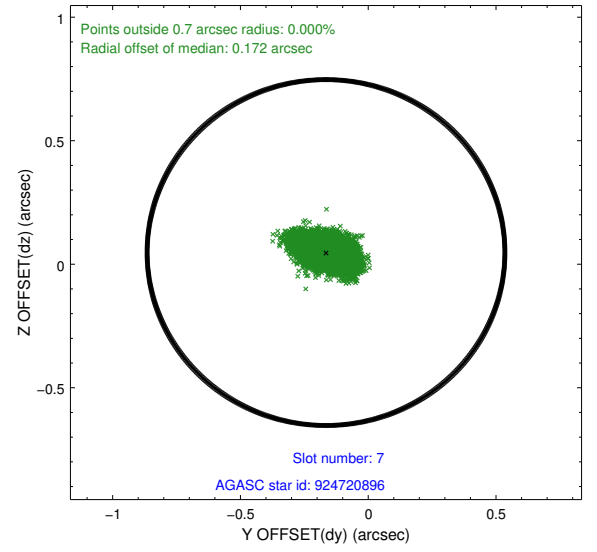
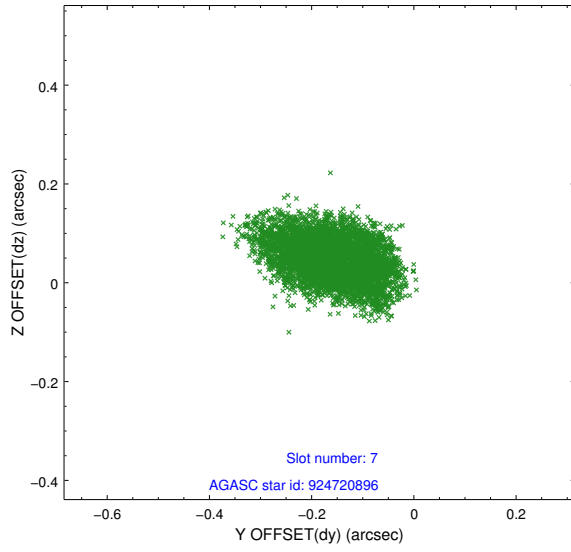
2.4.3 Slot 5



2.4.4 Slot 6

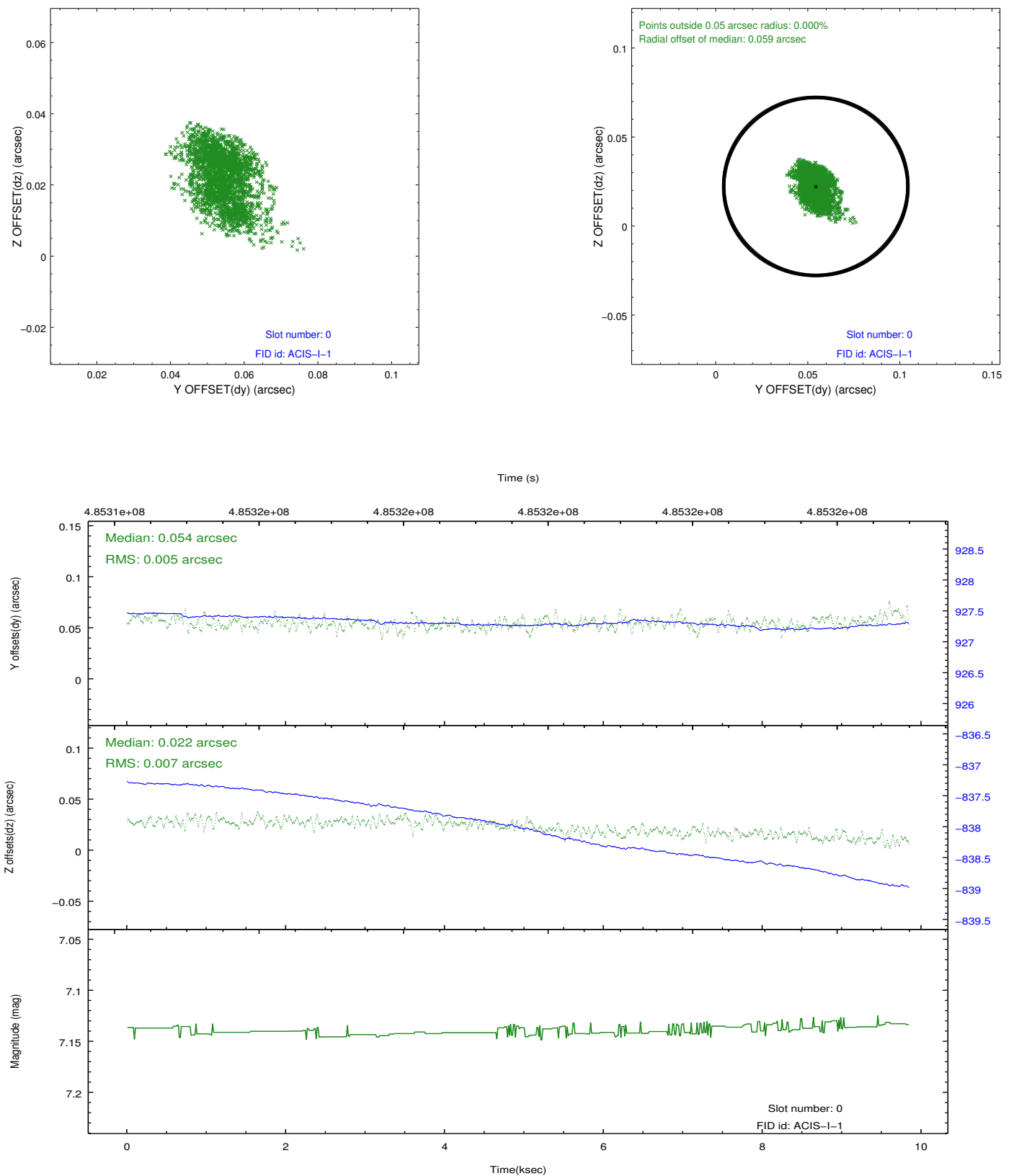


2.4.5 Slot 7

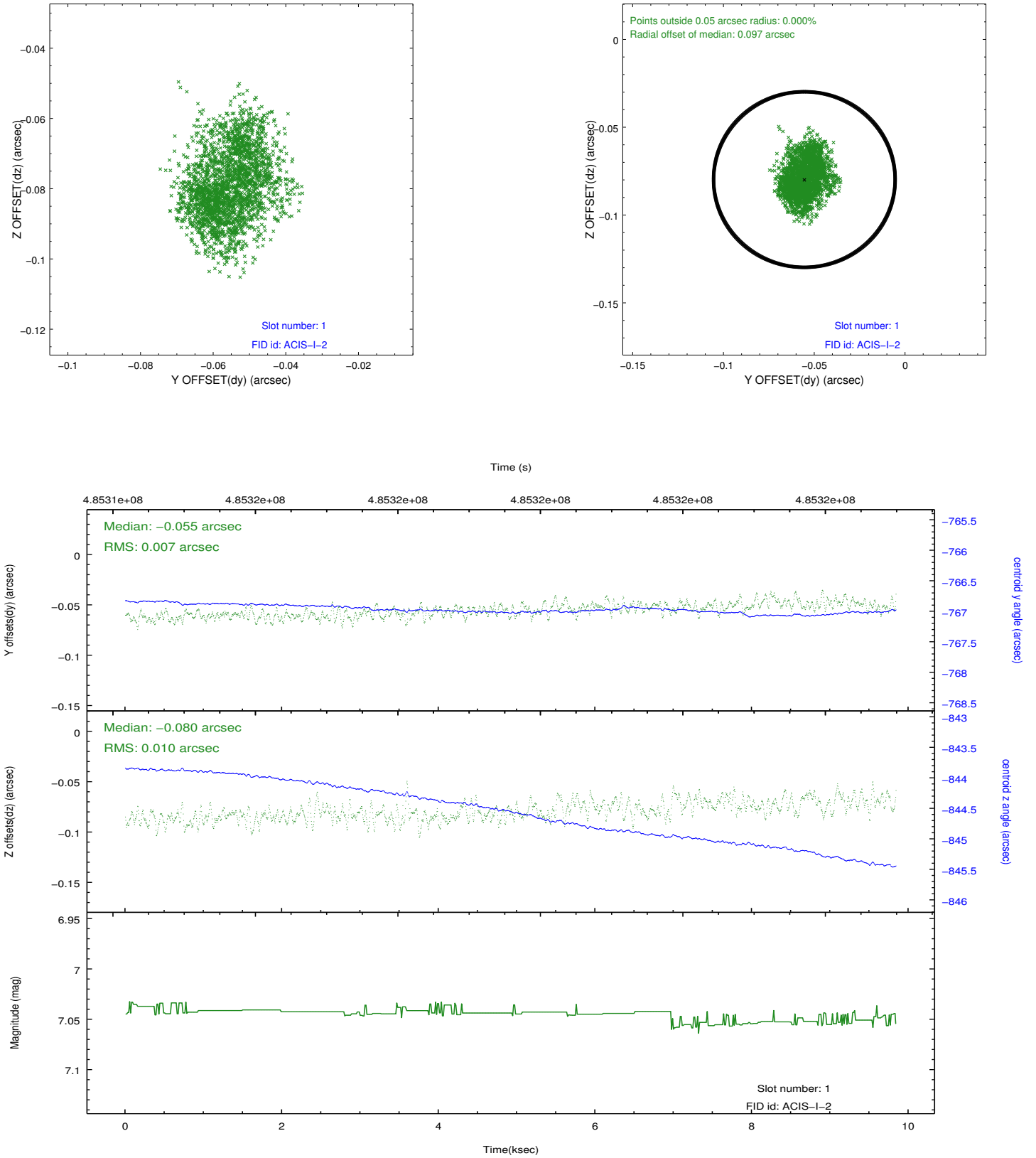


2.5 FID Slots

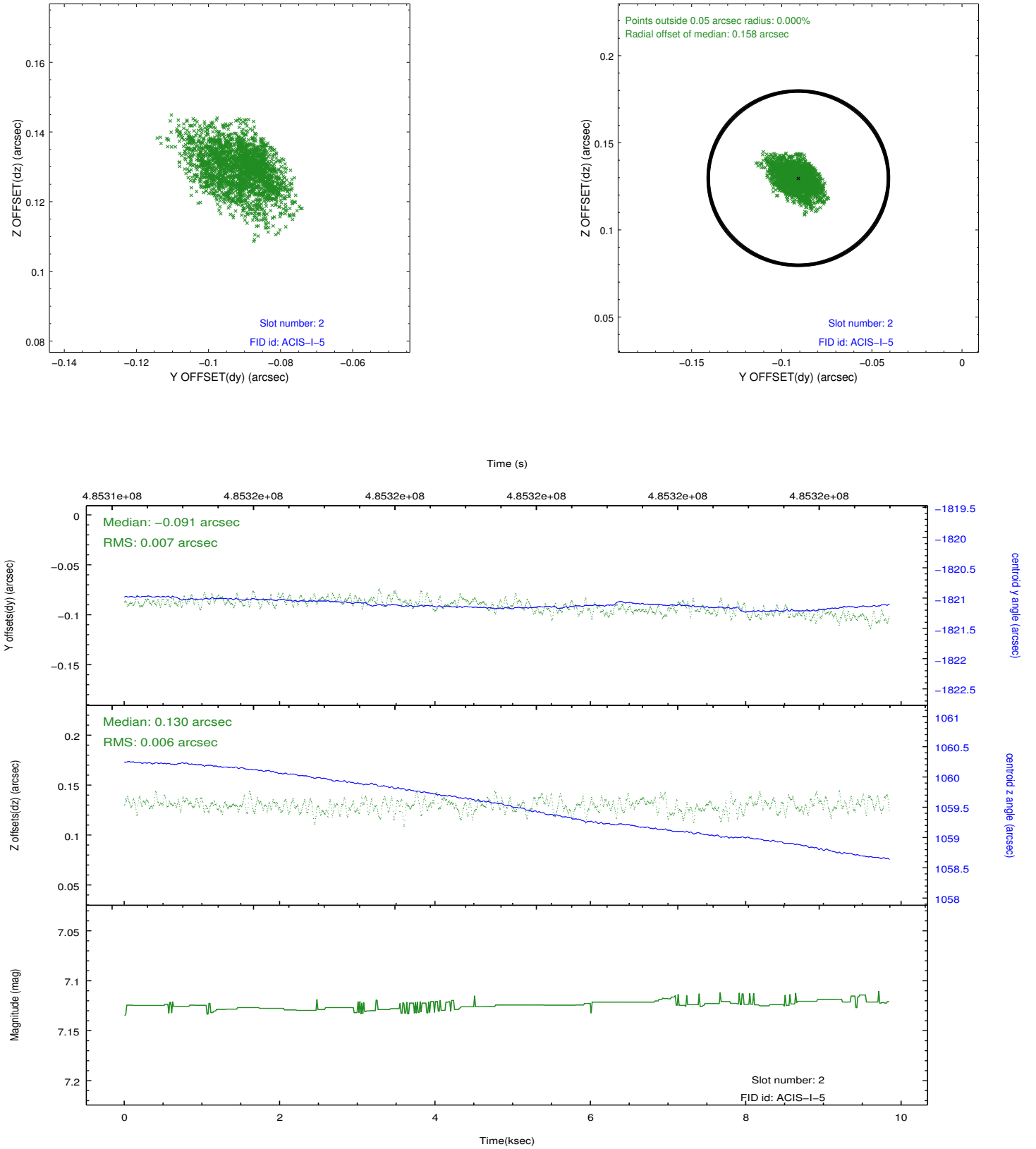
2.5.1 Slot 0



2.5.2 Slot 1



2.5.3 Slot 2



A Summary

A.1 Status

V&V Scientist	Jen Lauer
V&V Date (YYYY-MM-DD)	2014.12.10
V&V Edition	1
V&V Disposition and Status	OK
V&V Charge Time	9.0854381607175

A.2 Comments

These data have been reprocessed with new aspect alignment calibration files that correct small mean offsets (up to 0.4 arcsecs) and improve overall astrometric accuracy. The new calibration was determined using data from the time period being reprocessed and was performed using cross-correlation of X-ray sources with radio and optical counterparts.