

V&V Reference Report

L2 ASCDS Version : 10

Observation 15154 - L2 Version 2
Chandra X-Ray Center

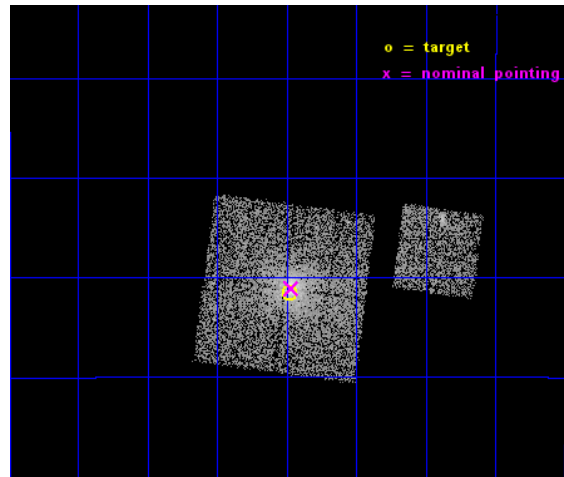
L2 Processing Date : Dec 5 2014

Contents

1	Front	2
2	OBI	3
2.1	OBI	3
2.1.1	Images	3
2.1.2	Bias	3
2.1.3	Parameters	4
2.1.4	Events	4
2.2	Compared Parameters	5
2.3	Aspect	6
2.4	Star Slots	9
2.4.1	Slot 3	9
2.4.2	Slot 4	10
2.4.3	Slot 5	11
2.4.4	Slot 6	12
2.4.5	Slot 7	13
2.5	FID Slots	14
2.5.1	Slot 0	14
2.5.2	Slot 1	15
2.5.3	Slot 2	16
A	Summary	17
A.1	Status	17
A.2	Comments	17

1 Front

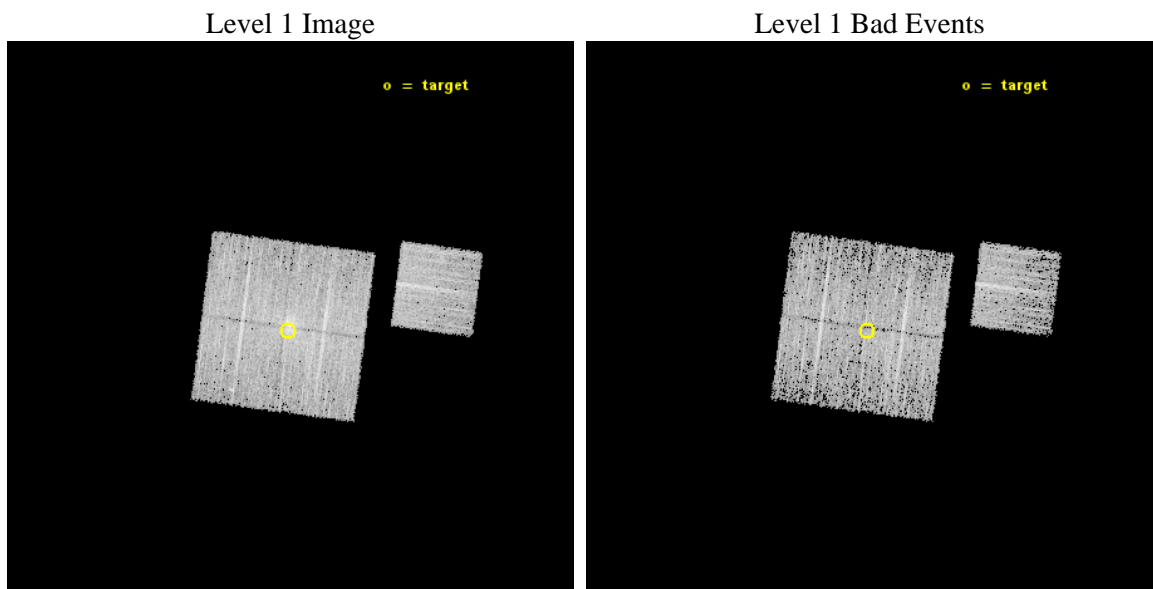
seq_num	801282	Sequence number
obs_id	15154	Observation id
title	COMPLETING eHIFLUGCS: THE ULTIMATE PRECISE AND ACCURATE LOCAL BASELINE	Proposal title
observer	Dr. Thomas Reiprich	Principal investigator
object	CAN 010	Source name
dtcycle	0	
cycle	P	events from which exps? Prim/Second/Both
ra_targ	20.245	Observer's specified target RA [deg]
dec_targ	-13.859	Observer's specified target Dec [deg]
ra_nom	20.241531447056	Nominal RA [deg]
dec_nom	-13.851641085751	Nominal Dec [deg]
roll_nom	97.555997447324	Nominal Roll [deg]
revision	2	Processing version of data
ontime	8084.8000621796	Sum of GTIs [s]
livetime	7979.166197424	Livetime [s]
ontime0	8081.6590217948	Sum of GTIs [s]
ontime1	8084.8000621796	Sum of GTIs [s]
ontime2	8084.8000621796	Sum of GTIs [s]
ontime3	8084.8000621796	Sum of GTIs [s]
ontime6	8084.7962419987	Sum of GTIs [s]
l2events	25912	Number of level 2 events



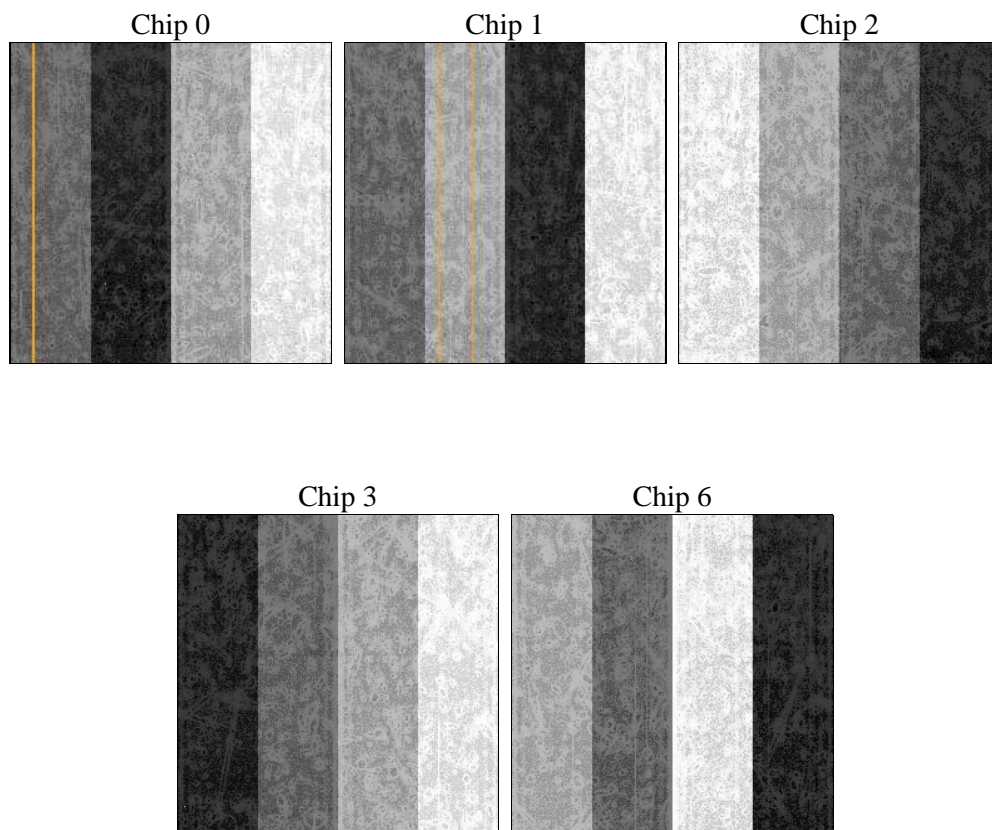
2 OBI

2.1 OBI

2.1.1 Images



2.1.2 Bias



2.1.3 Parameters

obi_num	0	Obi number	sched_exp_time	8000.000000	[s] Scheduled observation exposure time
ascdsver	10.3.1	Processing system revision	ontime	8084.8000621796	Sum of GTIs [s]
caldsver	4.6.4	 	ontime0	8081.6590217948	Sum of GTIs [s]
date	2014-12-06T03:13:59	Date and time of file creation	ontime1	8084.8000621796	Sum of GTIs [s]
revision	2	Processing version of data	ontime2	8084.8000621796	Sum of GTIs [s]
			ontime3	8084.8000621796	Sum of GTIs [s]
			ontime6	8084.7962419987	Sum of GTIs [s]
			l1events	185610	Number of level 1 events

2.1.4 Events

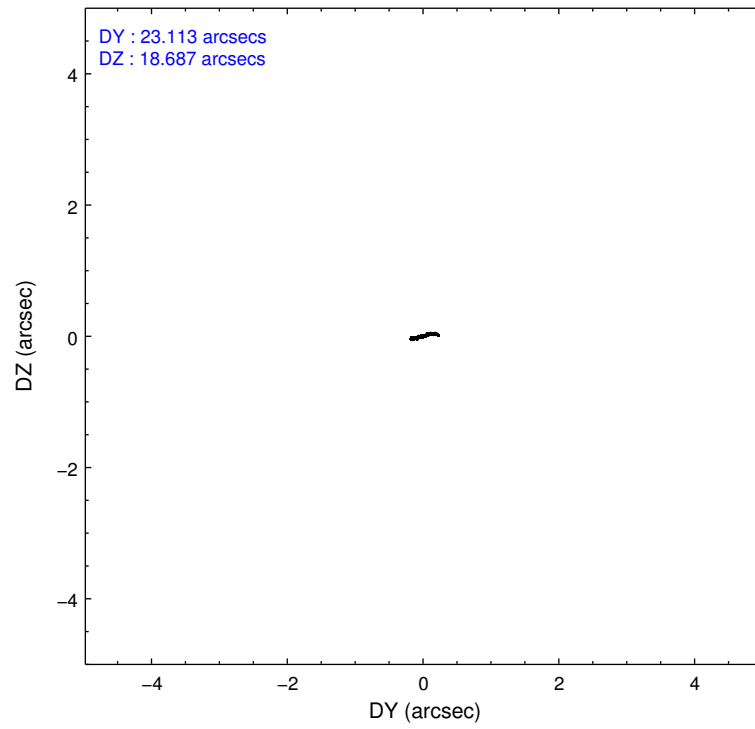
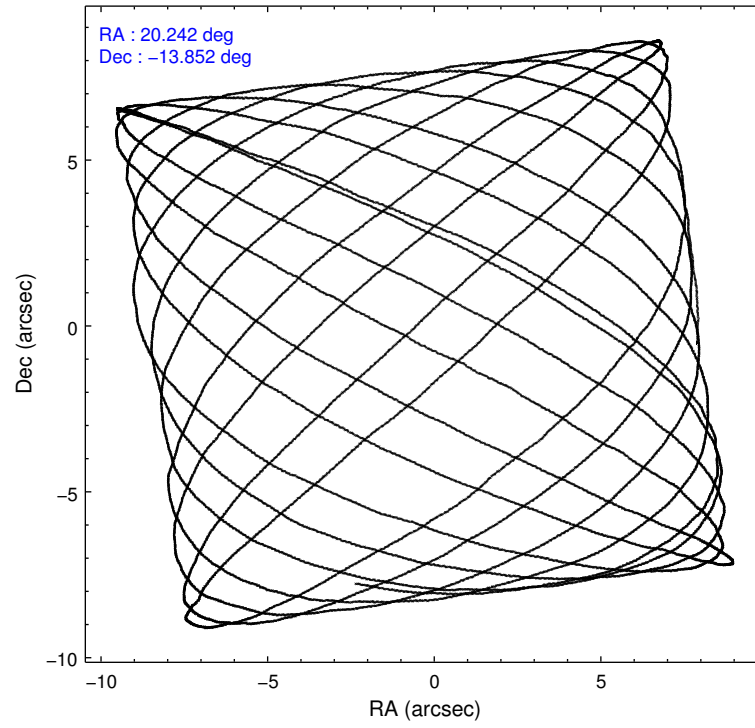
	ccd 0	ccd 1	ccd 2	ccd 3	ccd 6
level 1 events	36002	34738	39809	38792	36269
rejected events	30587	29125	32143	32128	31650
rejected %	84%	83%	80%	82%	87%

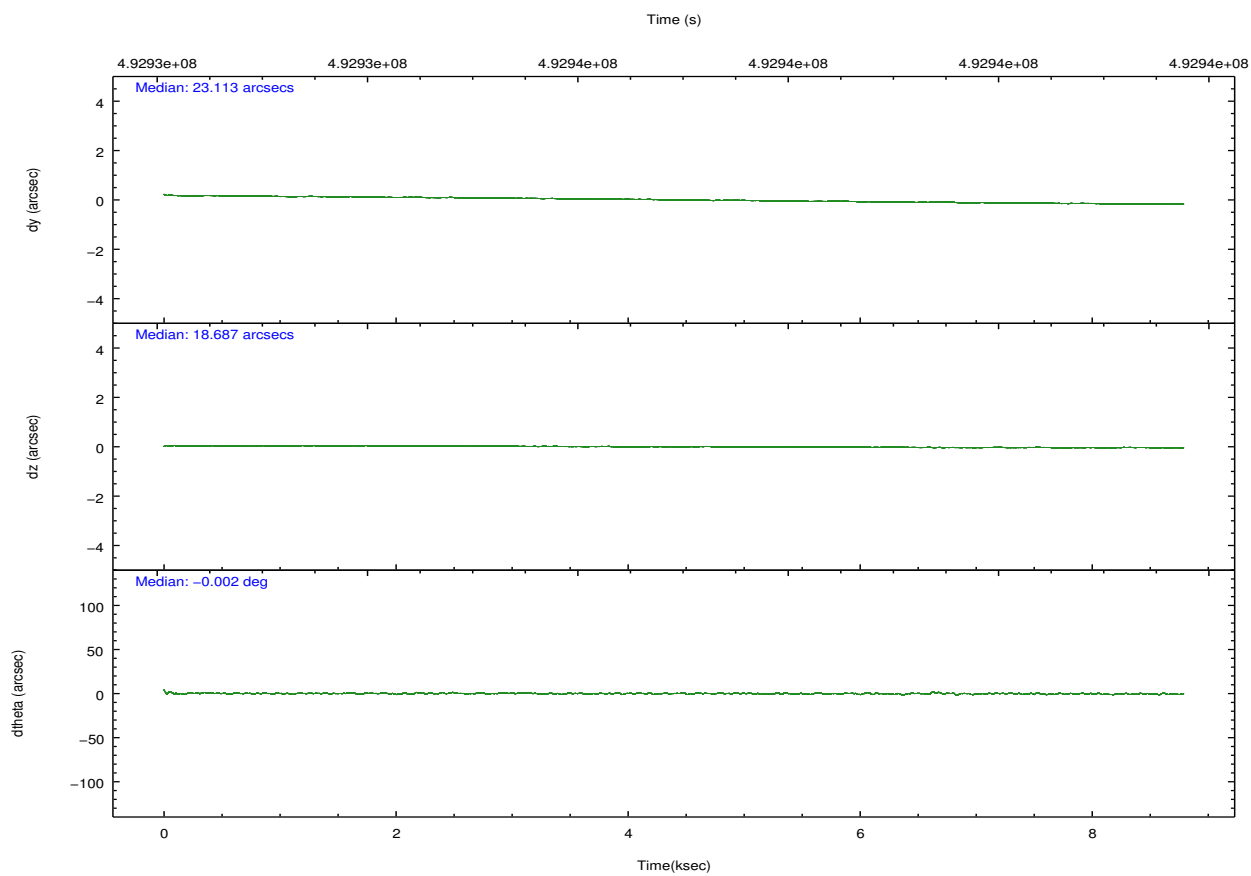
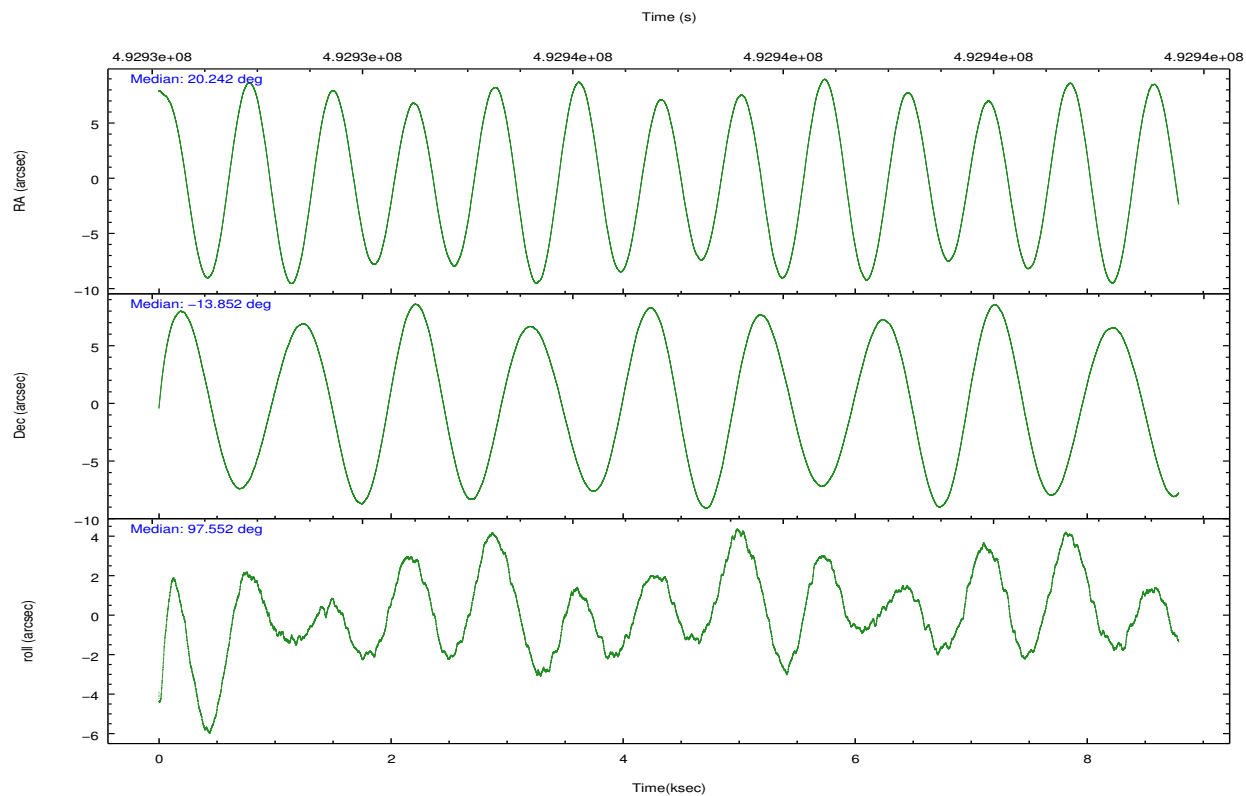
	ccd 0	ccd 1	ccd 2	ccd 3	ccd 6
grade 0 events	2456	2578	4474	3675	1724
	6%	7%	11%	9%	4%
grade 1 events	18	25	35	28	21
	0%	0%	0%	0%	0%
grade 2 events	1189	1155	1354	1181	1000
	3%	3%	3%	3%	2%
grade 3 events	468	455	511	483	443
	1%	1%	1%	1%	1%
grade 4 events	451	442	521	454	481
	1%	1%	1%	1%	1%
grade 5 events	1508	1607	1505	1739	1735
	4%	4%	3%	4%	4%
grade 6 events	857	986	808	875	975
	2%	2%	2%	2%	2%
grade 7 events	29055	27490	30601	30357	29890
	80%	79%	76%	78%	82%

2.2 Compared Parameters

Parameter	Planned	Actual	Parameter	Planned	Actual
Instrument	ACIS	ACIS	Obspar format version number	7	7
Detector	ACIS-01236	ACIS-01236	Obspar file type	PREDICTED	ACTUAL
Grating	NONE	NONE	Obspar update status	NONE	UPDATED
Data mode	VFAINT	VFAINT	CCD I0 on	Y	Y
Observation mode	POINTING	POINTING	CCD I1 on	Y	Y
[deg] Pointing RA	20.258853	20.24153144705648	CCD I2 on	Y	Y
[deg] Pointing Dec	-13.873402	-13.85164108575066	CCD I3 on	Y	Y
[deg] Pointing Roll	97.351457	97.5559974473244	CCD S0 on	N	N
[mm] SIM focus pos	-0.782348	-0.7809083437167272	CCD S1 on	N	N
[mm] SIM defocus	0	0.001439871863259334	CCD S2 on	O1	Y
[mm] SIM translation stage pos	-233.592463	-233.5874344608287	CCD S3 on	N	N
[mm] SIM translation stage offset	0	-0.005018542100998502	CCD S4 on	N	N
[s] Observation start time (MET)	492933301.184000	492932056.35038	CCD S5 on	N	N
Observation start date	2013-08-15T05:53:54	2013-08-15T05:34:16	Number of optional ACIS chips dropped	0	0
[s] Observation end time (MET)	492941301.184000	492942171.56343	On-chip summing requested	N	N
Observation end date	2013-08-15T08:07:14	2013-08-15T08:22:51	Subarray requested	NONE	NONE
Read mode	TIMED	TIMED	Alternating exposures requested	N	N
			[s] Primary exposure time	0.000000	3.1

2.3 Aspect



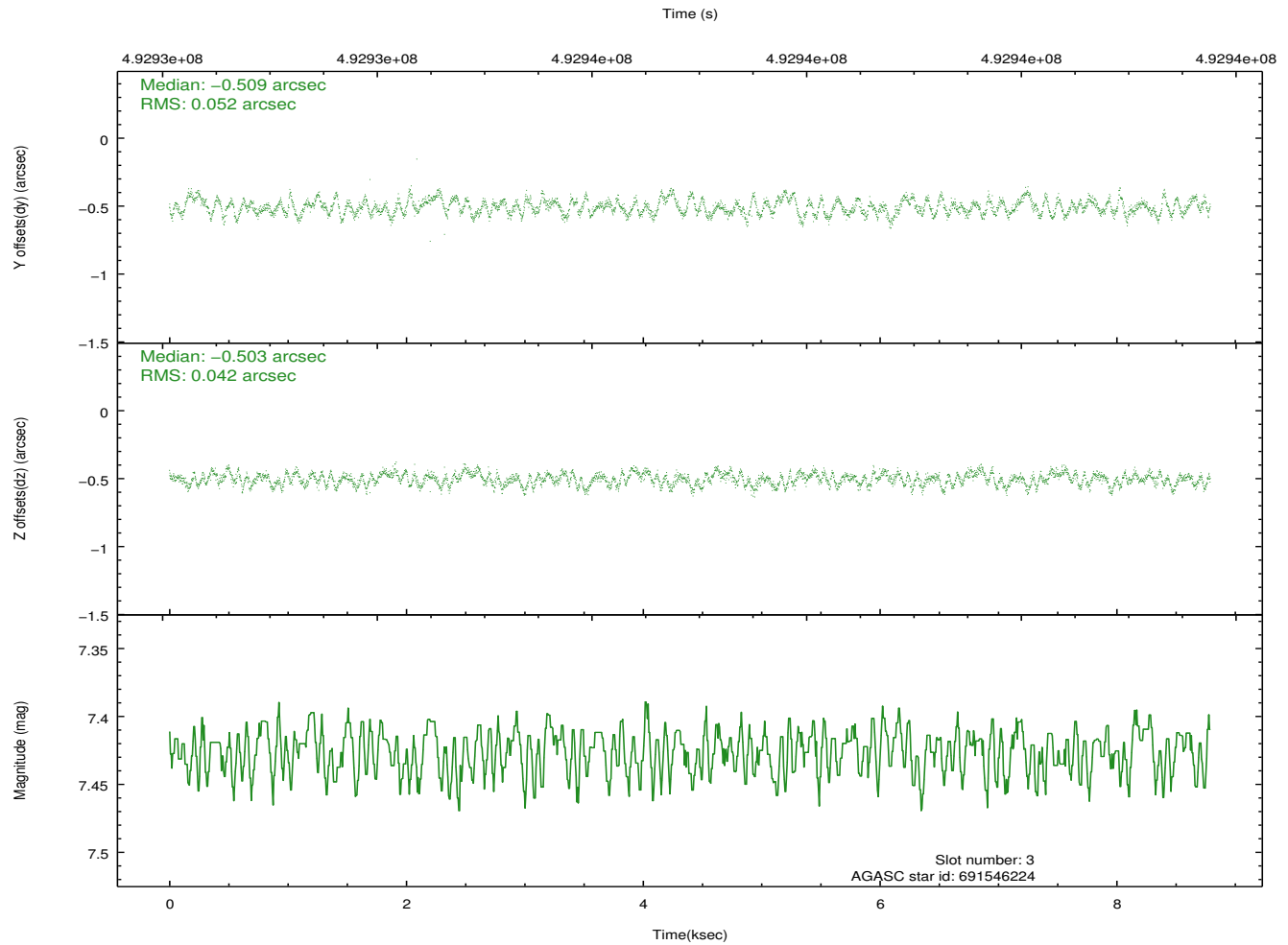
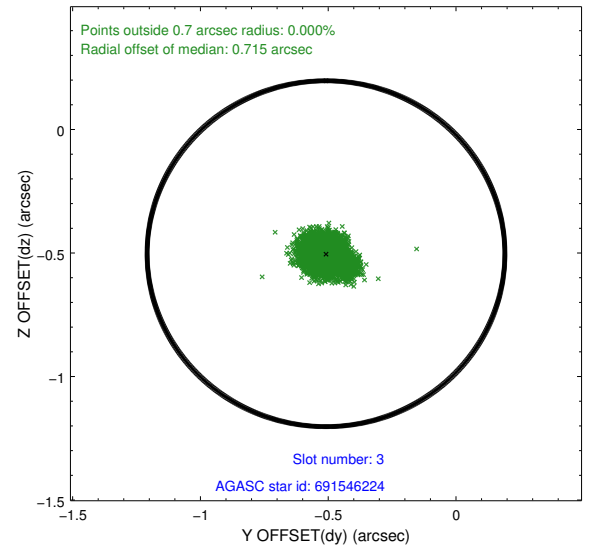
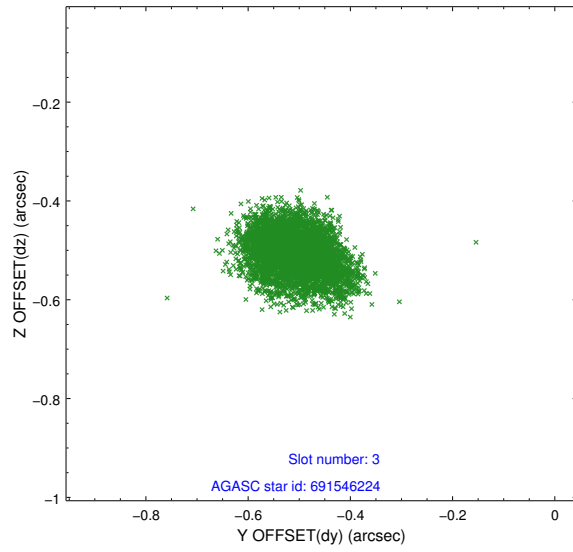


Slot Statistics

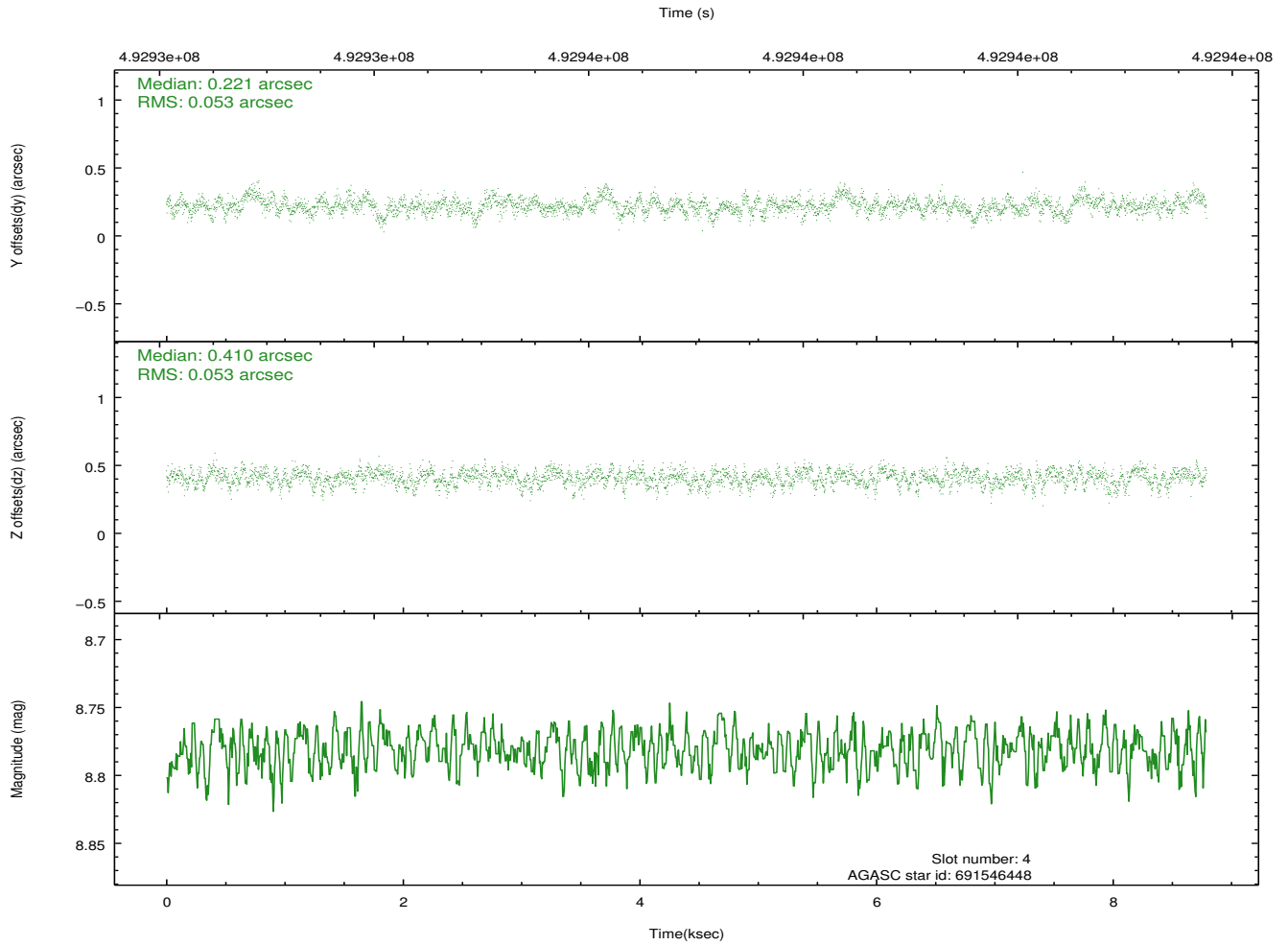
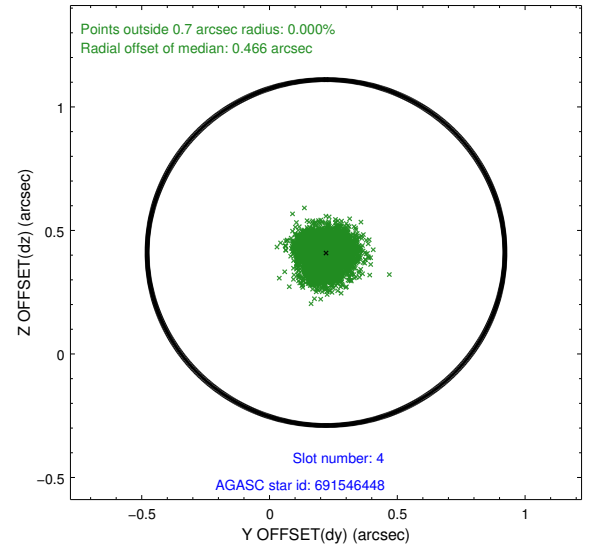
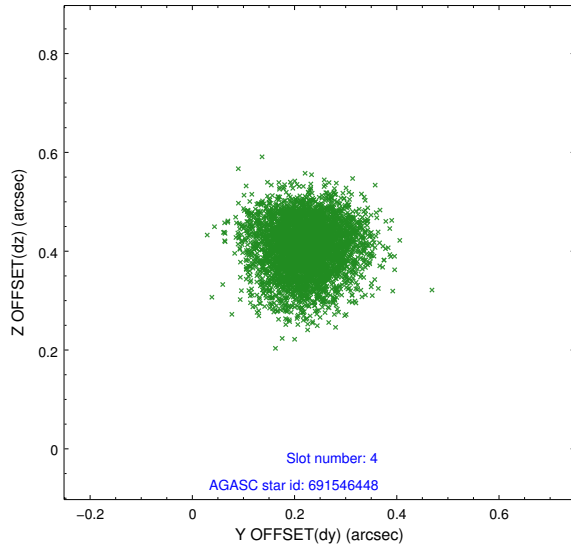
slot	status	used	id	mag	n_pts	med_dy	med_dz	dr1	dr2	ra	dec	mean_y	mean_z
0	FID		ACIS-I-2	7.04	2144	0.002	-0.054	0.009	0.016	0.000000	0.000000	-778.05	-848.80
1	FID		ACIS-I-5	7.13	2144	-0.241	0.043	0.009	0.015	0.000000	0.000000	-1832.68	1054.82
2	FID		ACIS-I-6	7.14	2144	0.145	0.079	0.006	0.011	0.000000	0.000000	381.11	1700.09
3	GUIDE	used	691546224	7.43	4289	-0.509	-0.503	0.072	0.115	19.677839	-13.396839	1959.19	1798.73
4	GUIDE	used	691546448	8.78	4288	0.221	0.410	0.080	0.129	20.881225	-14.377624	-2080.09	-1918.38
5	GUIDE	used	691547160	8.46	4286	0.248	0.232	0.077	0.125	20.875985	-13.924239	-460.48	-2115.61
6	GUIDE	used	691548032	8.24	4289	0.192	0.235	0.079	0.130	20.858281	-14.206917	-1460.65	-1922.02
7	GUIDE	used	691552592	6.78	4288	-0.161	-0.366	0.079	0.134	20.169373	-13.889975	-19.50	316.79

2.4 Star Slots

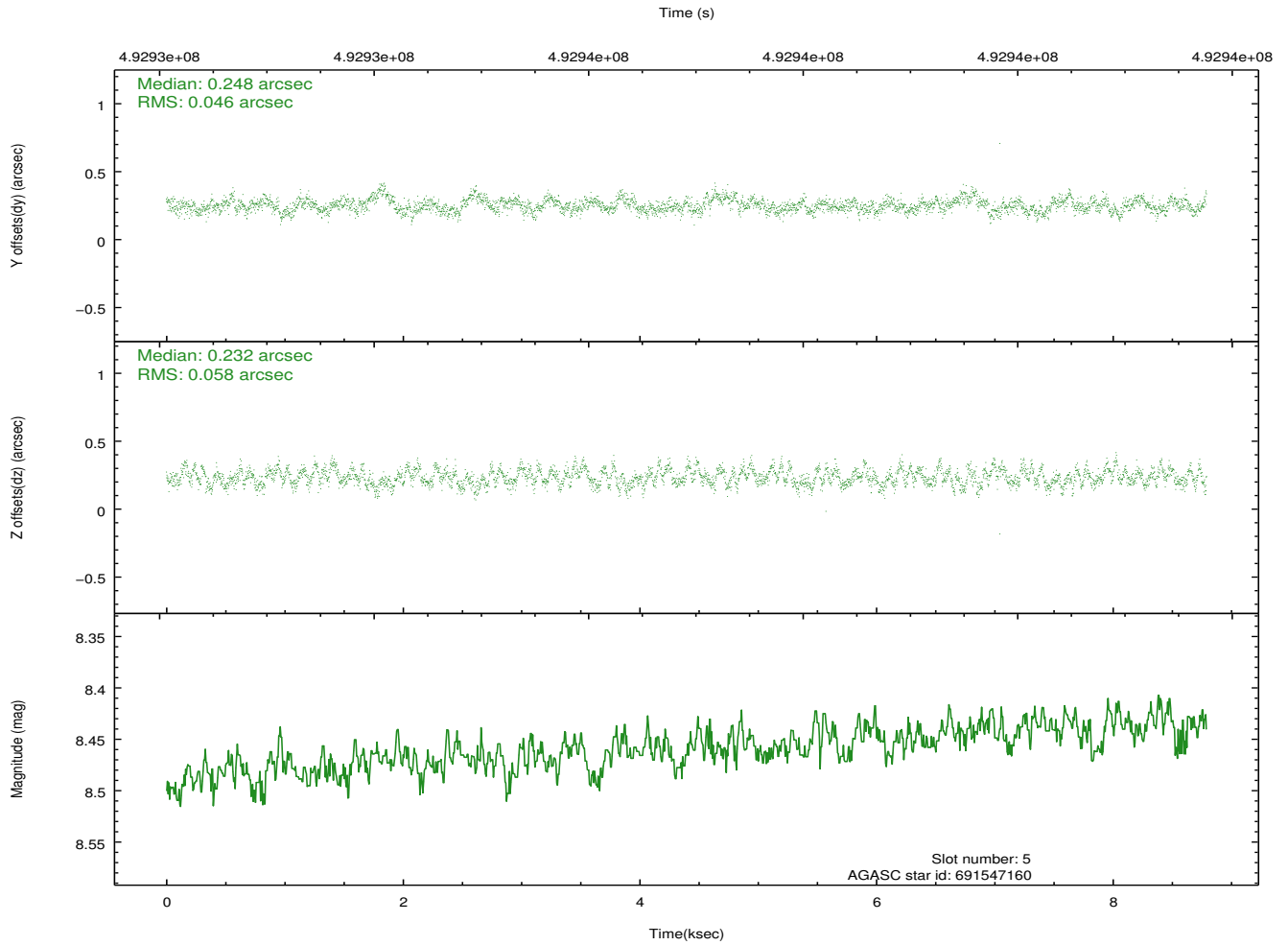
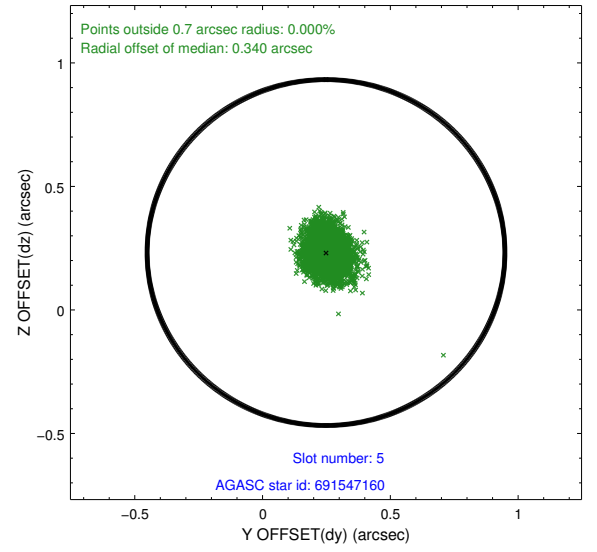
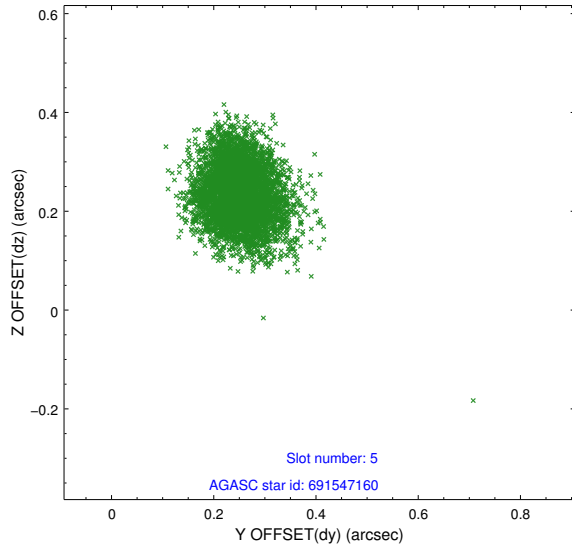
2.4.1 Slot 3



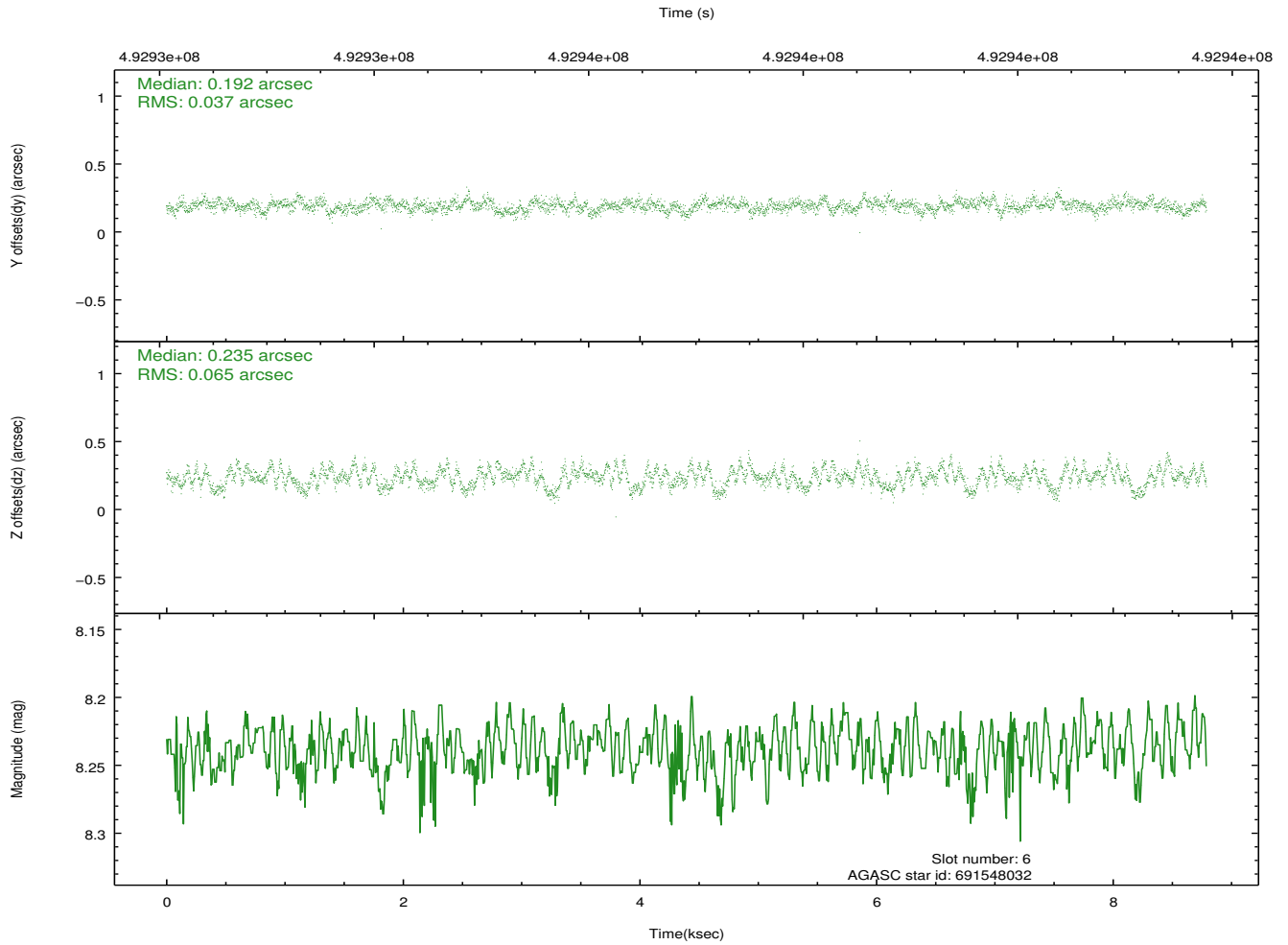
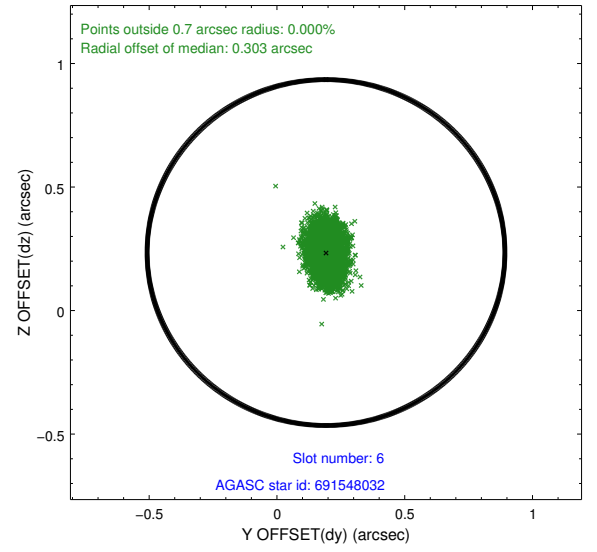
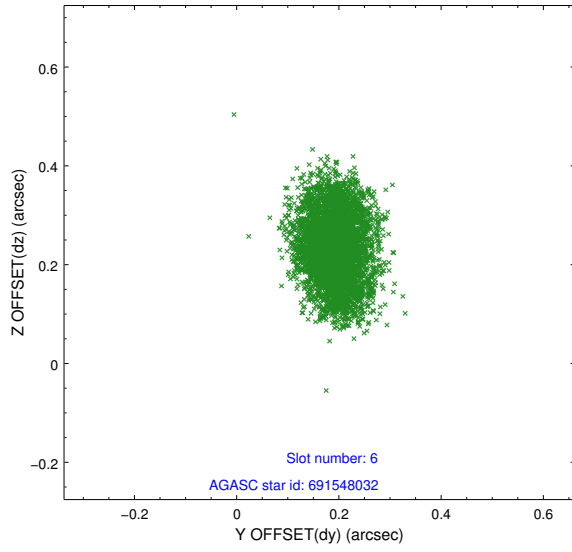
2.4.2 Slot 4



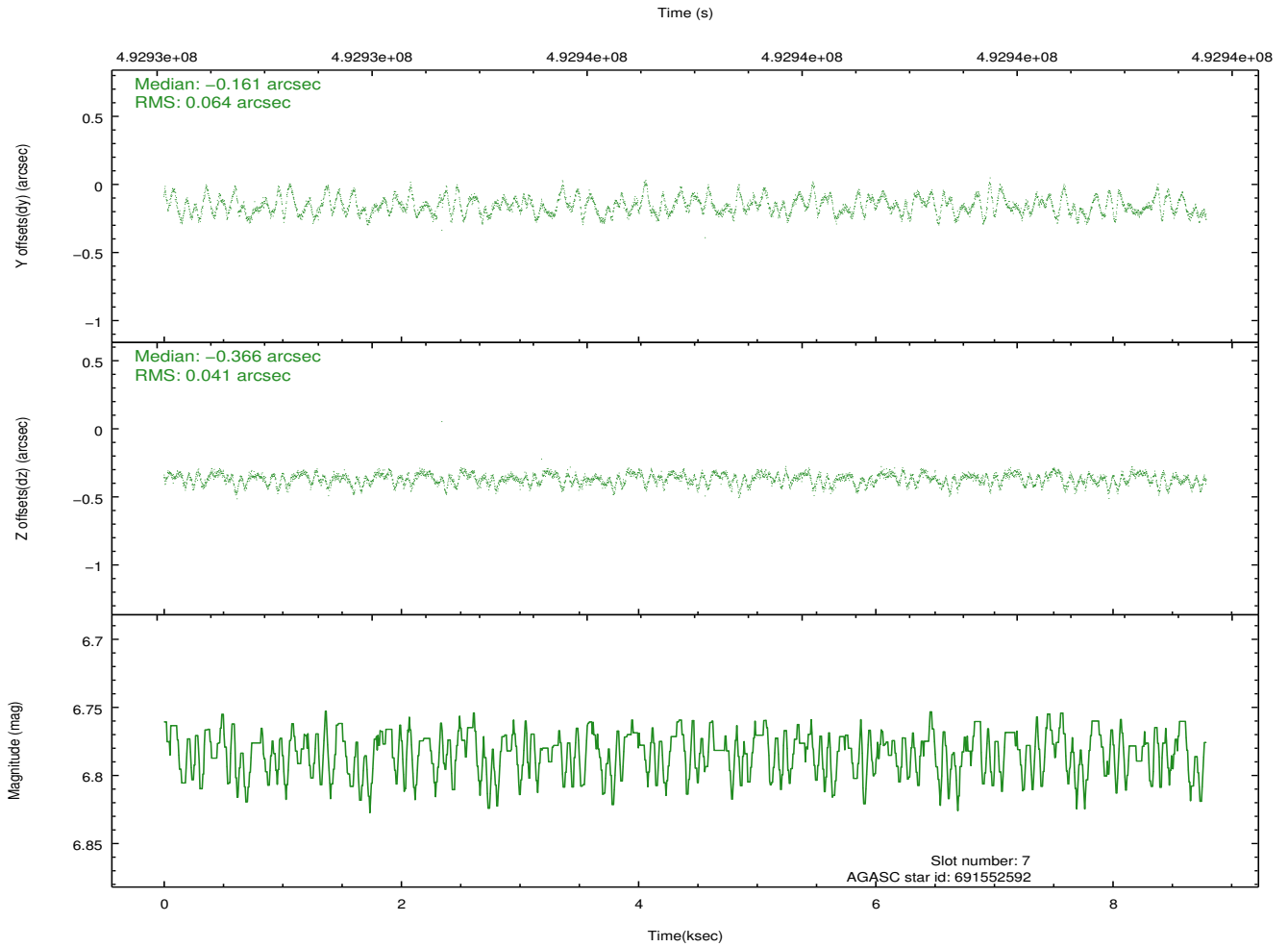
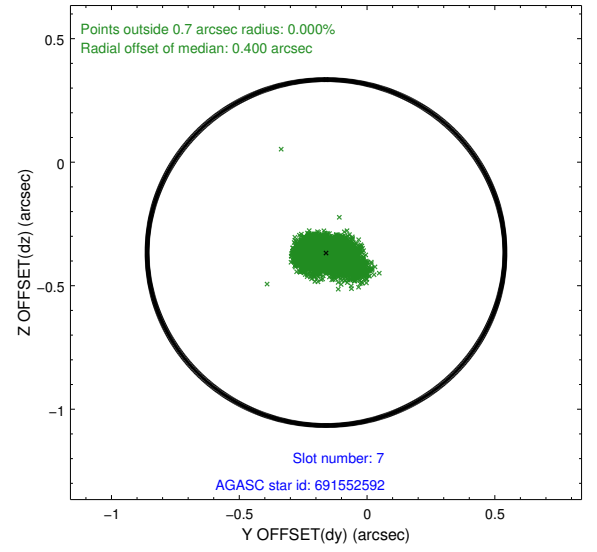
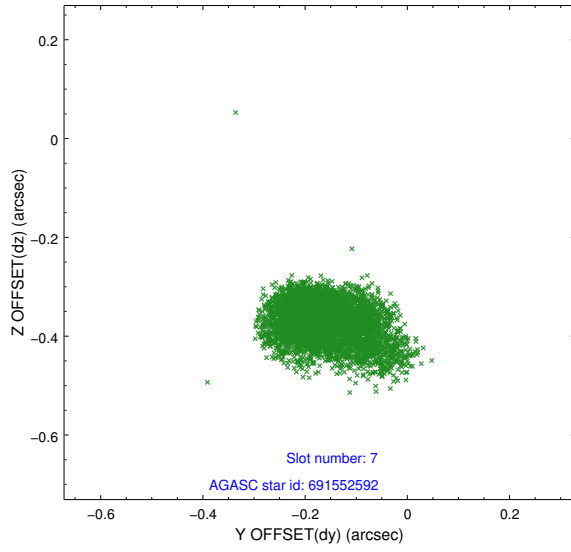
2.4.3 Slot 5



2.4.4 Slot 6

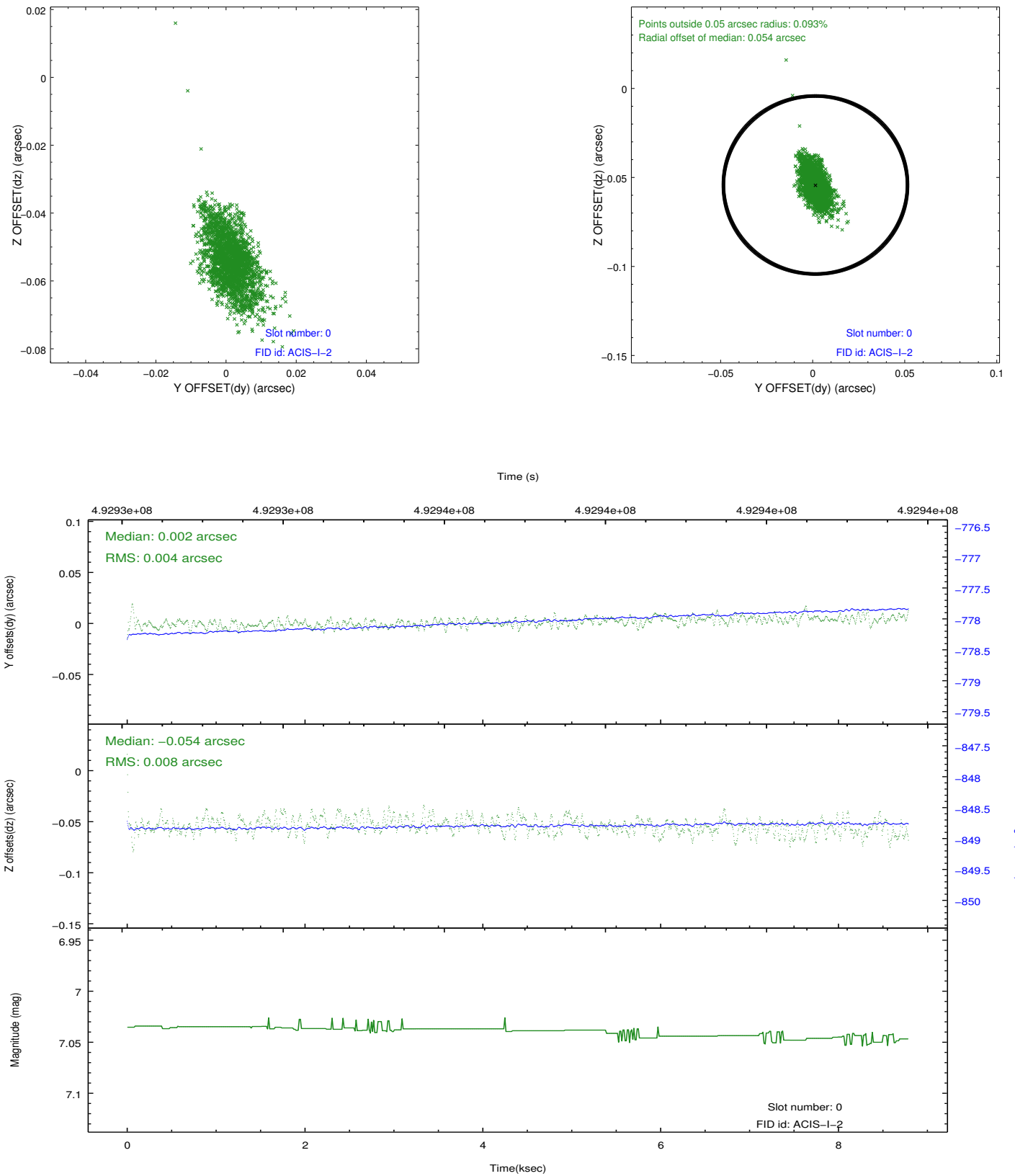


2.4.5 Slot 7

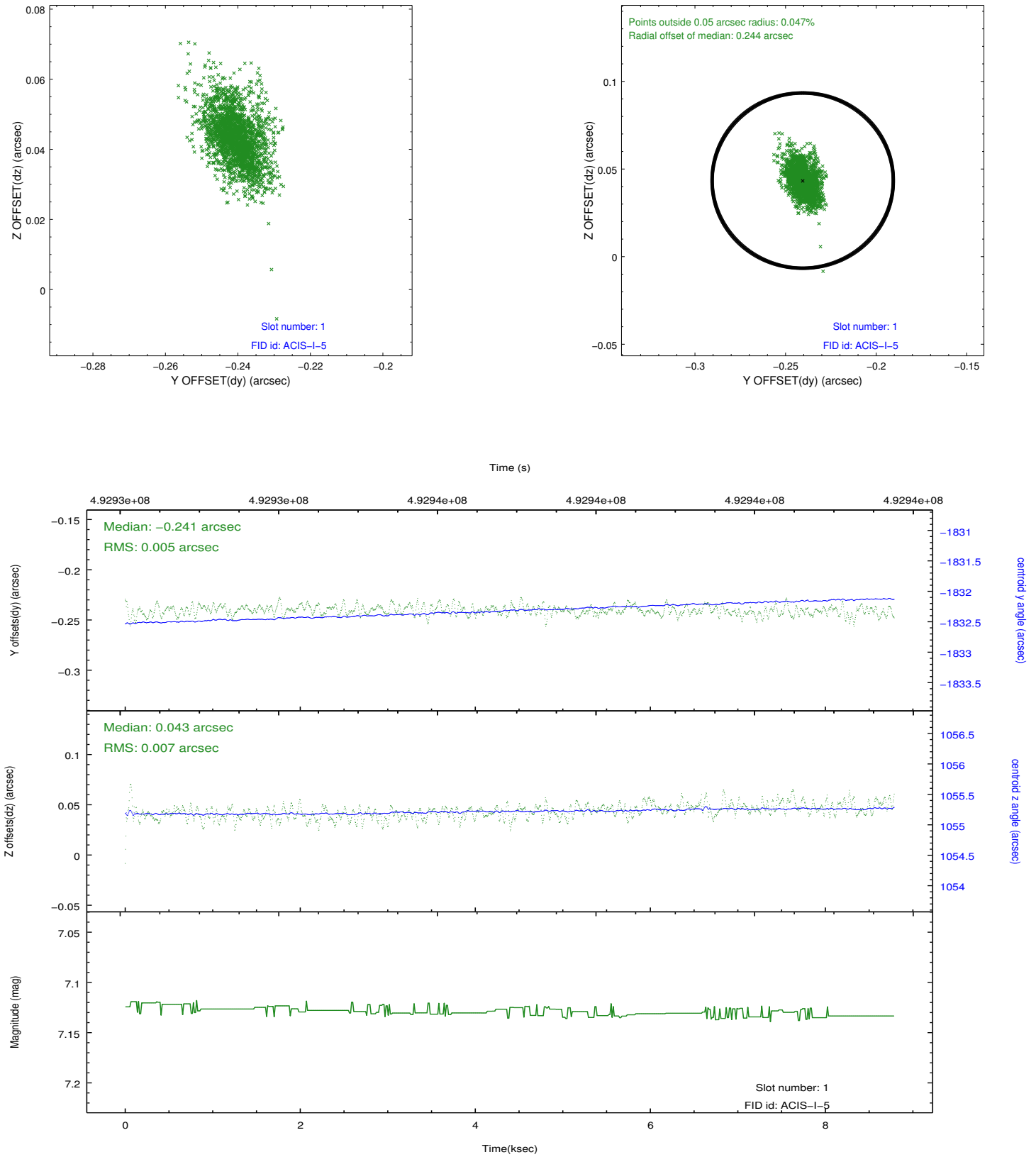


2.5 FID Slots

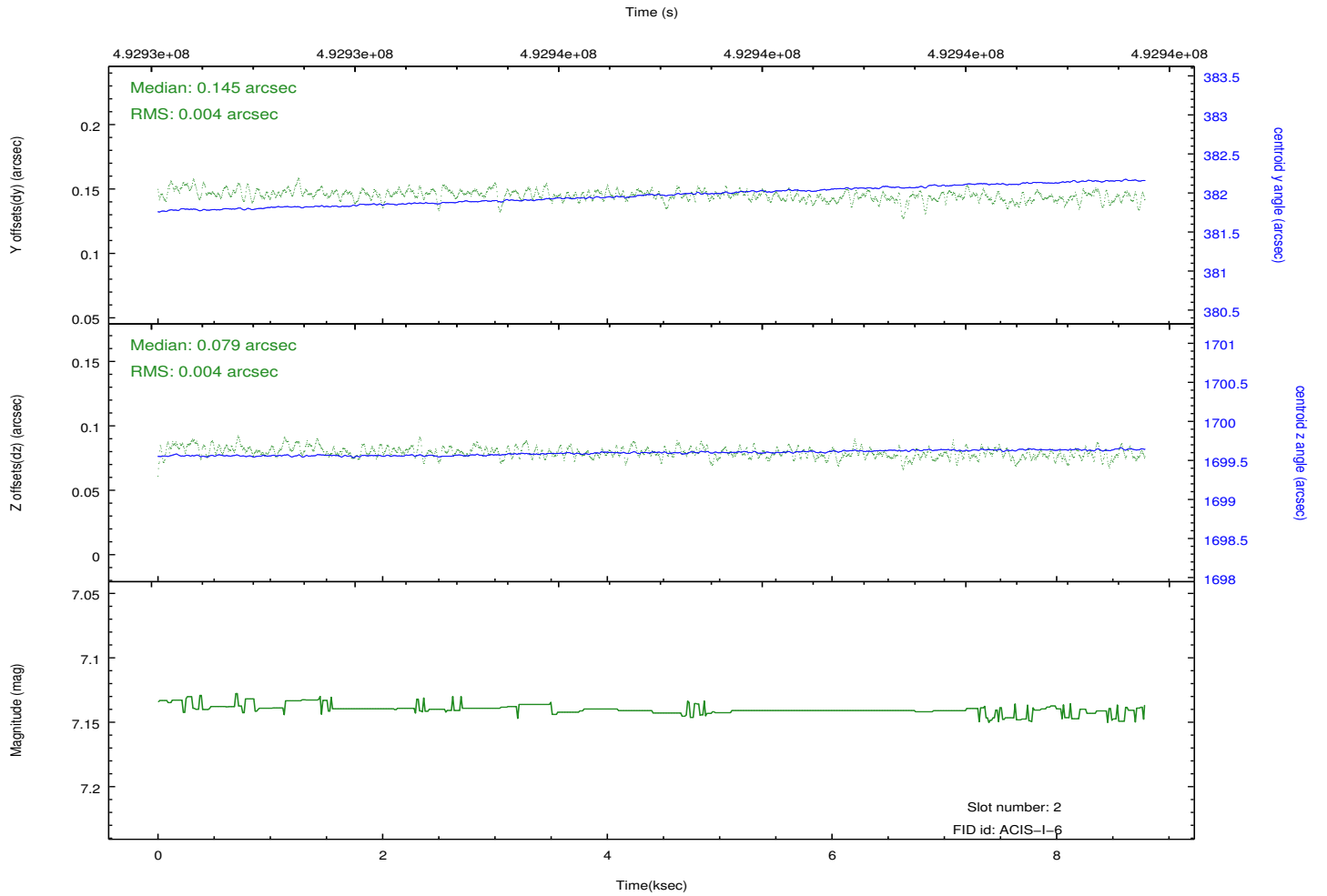
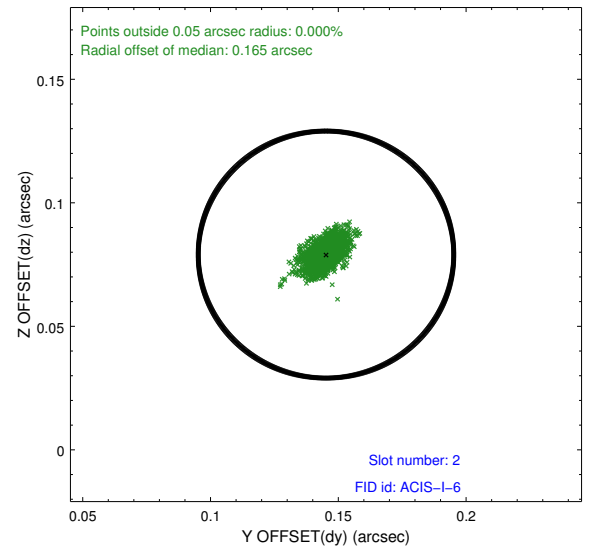
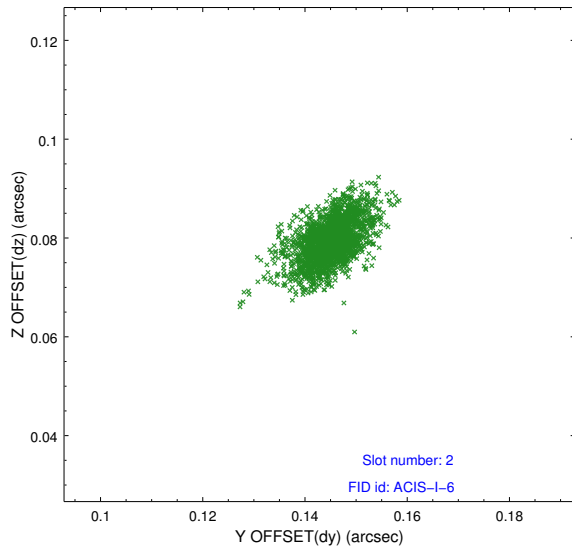
2.5.1 Slot 0



2.5.2 Slot 1



2.5.3 Slot 2



A Summary

A.1 Status

V&V Scientist	Beth Sundheim
V&V Date (YYYY-MM-DD)	2014.12.11
V&V Edition	1
V&V Disposition and Status	OK
V&V Charge Time	8.0848000621796

A.2 Comments

These data have been reprocessed with new aspect alignment calibration files that correct small mean offsets (up to 0.4 arcsecs) and improve overall astrometric accuracy. The new calibration was determined using data from the time period being reprocessed and was performed using cross-correlation of X-ray sources with radio and optical counterparts.