

V&V Reference Report

L2 ASCDS Version : 10.1.1

Observation 15125 - L2 Version 2
Chandra X-Ray Center

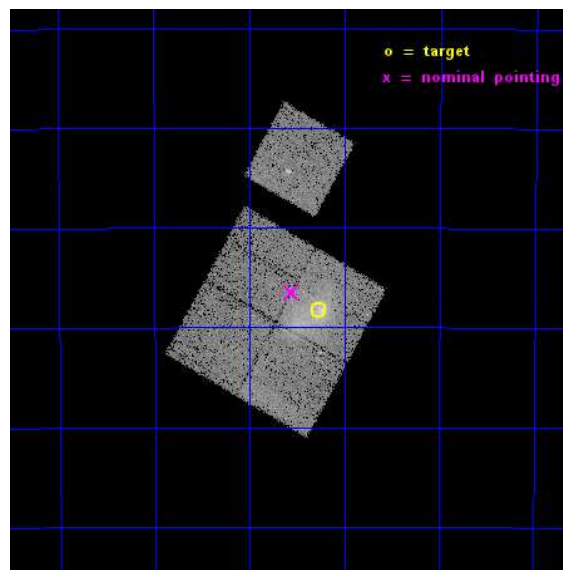
L2 Processing Date : Dec 8 2014

Contents

1	Front	2
2	OBI	3
2.1	OBI	3
2.1.1	Images	3
2.1.2	Bias	3
2.1.3	Parameters	4
2.1.4	Events	4
2.2	Compared Parameters	5
2.3	Aspect	6
2.4	Star Slots	9
2.4.1	Slot 3	9
2.4.2	Slot 4	10
2.4.3	Slot 5	11
2.4.4	Slot 6	12
2.4.5	Slot 7	13
2.5	FID Slots	14
2.5.1	Slot 0	14
2.5.2	Slot 1	15
2.5.3	Slot 2	16
A	Summary	17
A.1	Status	17
A.2	Comments	17

1 Front

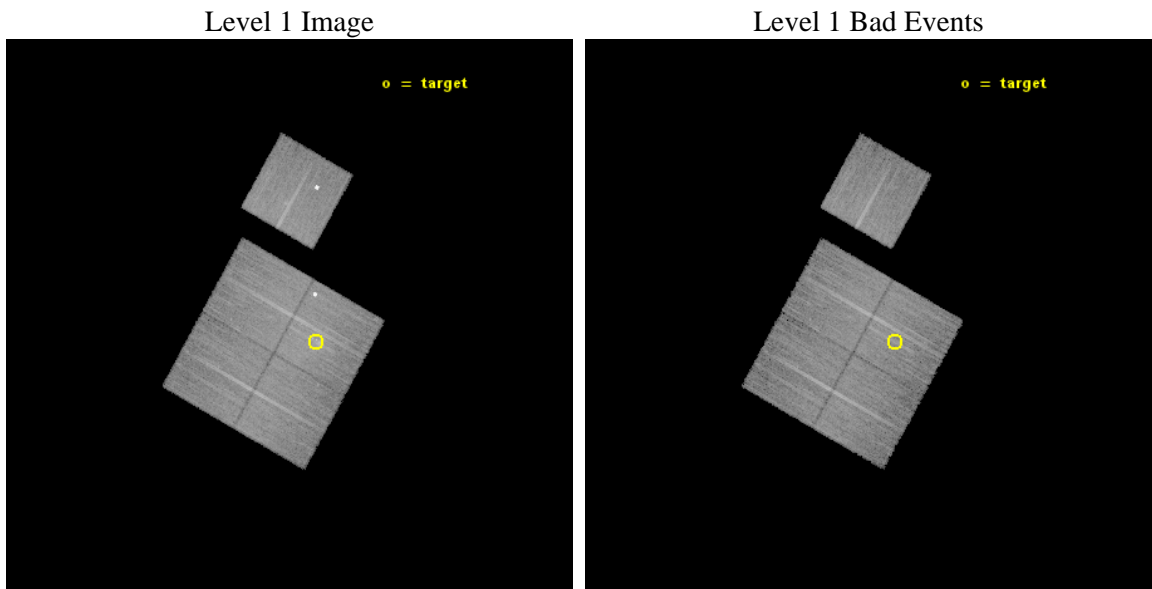
seq_num	801254	Sequence number
obs_id	15125	Observation id
title	A Chandra-Planck Legacy Program for Massive Clusters of Galaxies	P
observer	Dr. Christine Jones	Principal investigator
object	G257.34-22.18	Source name
dtcycle	0	
cycle	P	events from which exps? Prim/Second/Both
ra_targ	99.32	Observer's specified target RA [deg]
dec_targ	-48.47	Observer's specified target Dec [deg]
ra_nom	99.389826480889	Nominal RA [deg]
dec_nom	-48.441429666387	Nominal Dec [deg]
roll_nom	29.346496314484	Nominal Roll [deg]
revision	2	Processing version of data
ontime	25085.200192928	Sum of GTIs [s]
livetime	24757.443584952	Livetime [s]
ontime0	25082.059162676	Sum of GTIs [s]
ontime1	25082.059192538	Sum of GTIs [s]
ontime2	25082.059172511	Sum of GTIs [s]
ontime3	25085.200192928	Sum of GTIs [s]
ontime6	25082.059152603	Sum of GTIs [s]
l2events	71011	Number of level 2 events



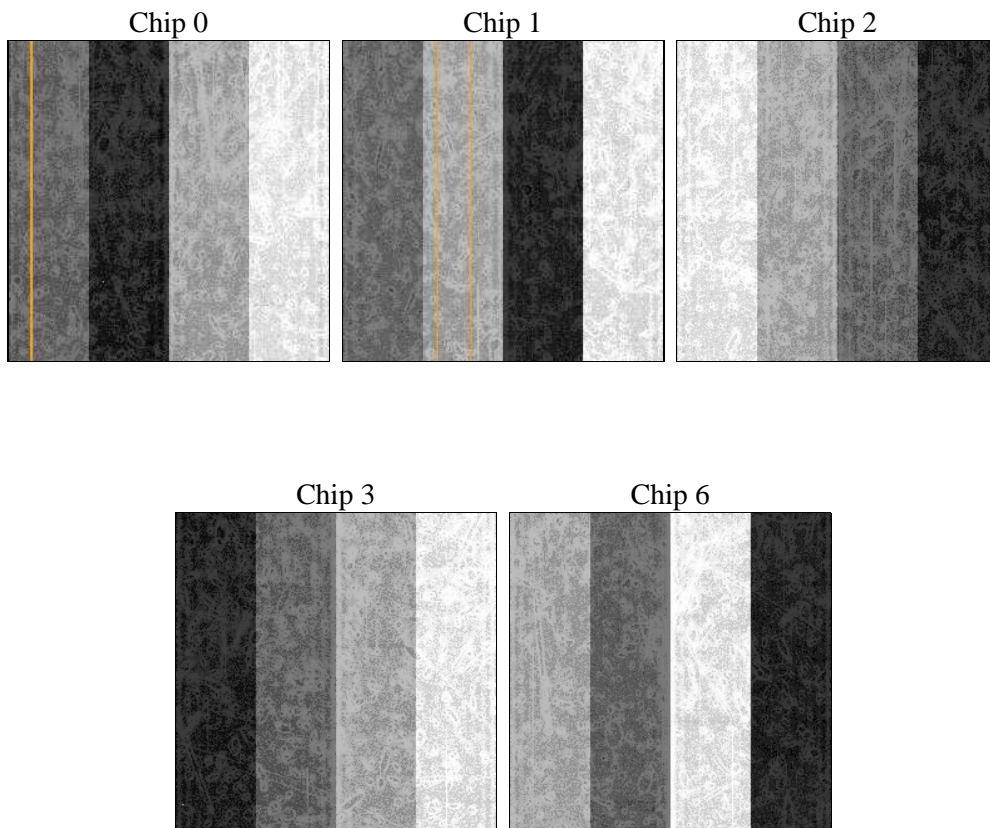
2 OBI

2.1 OBI

2.1.1 Images



2.1.2 Bias



2.1.3 Parameters

obi_num	0	Obi number	sched_exp_time	25000.041000	[s] Scheduled observation exposure time
ascdsver	10.3.1	Processing system revision	ontime	25085.200192928	Sum of GTIs [s]
caldsver	4.6.4	 	ontime0	25082.059162676	Sum of GTIs [s]
date	2014-12-08T05:30:00	Date and time of file creation	ontime1	25082.059192538	Sum of GTIs [s]
revision	2	Processing version of data	ontime2	25082.059172511	Sum of GTIs [s]
			ontime3	25085.200192928	Sum of GTIs [s]
			ontime6	25082.059152603	Sum of GTIs [s]
			l1events	588864	Number of level 1 events

2.1.4 Events

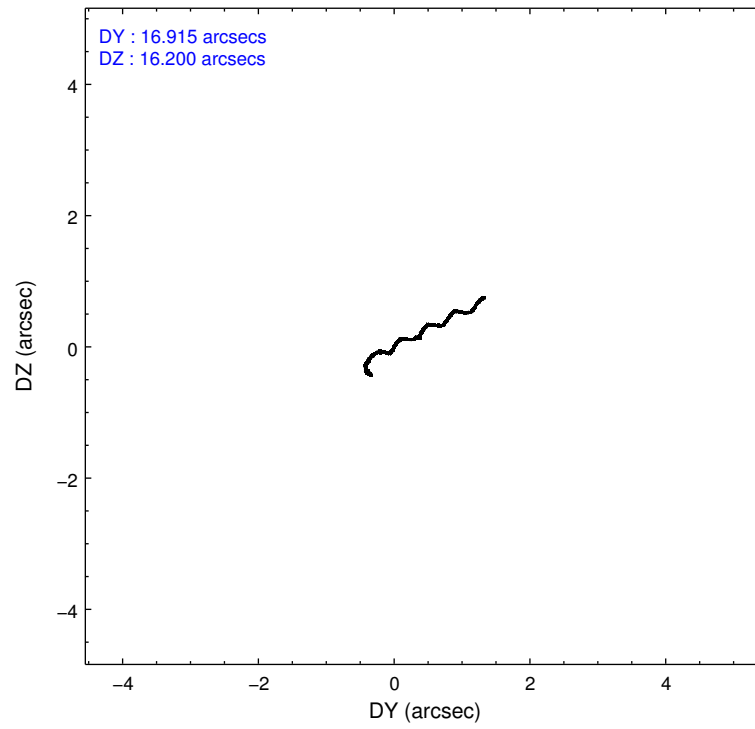
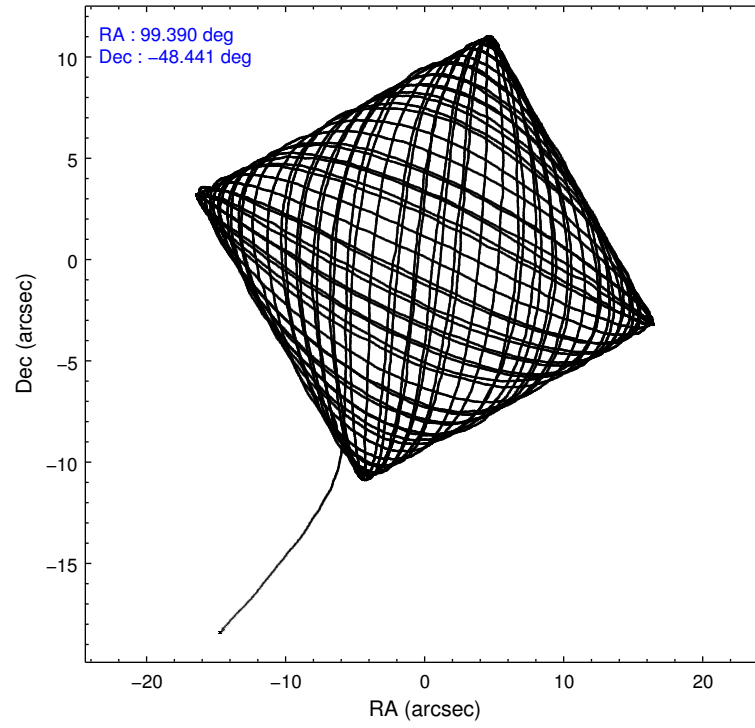
	ccd 0	ccd 1	ccd 2	ccd 3	ccd 6
level 1 events	103038	110733	117894	132733	124466
rejected events	89438	94464	104555	100397	102484
rejected %	86%	85%	88%	75%	82%

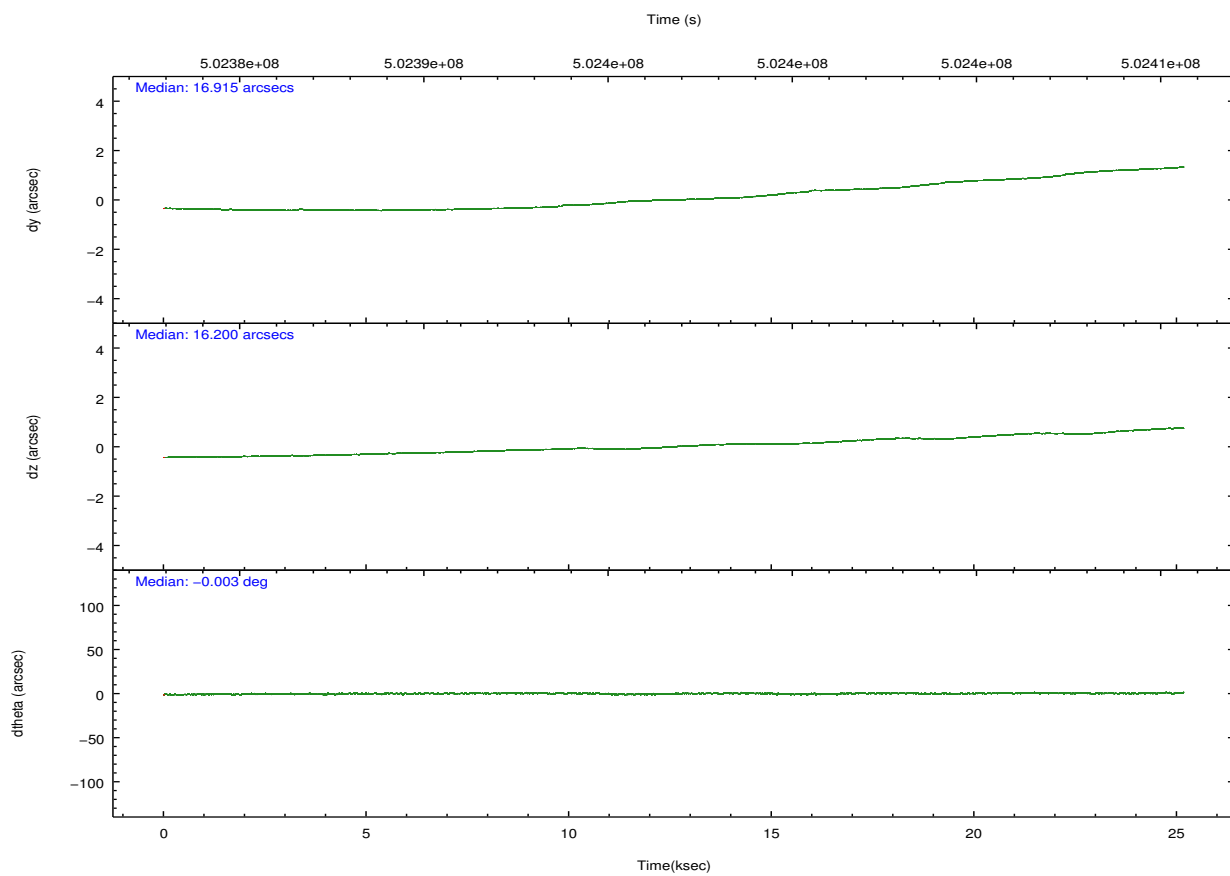
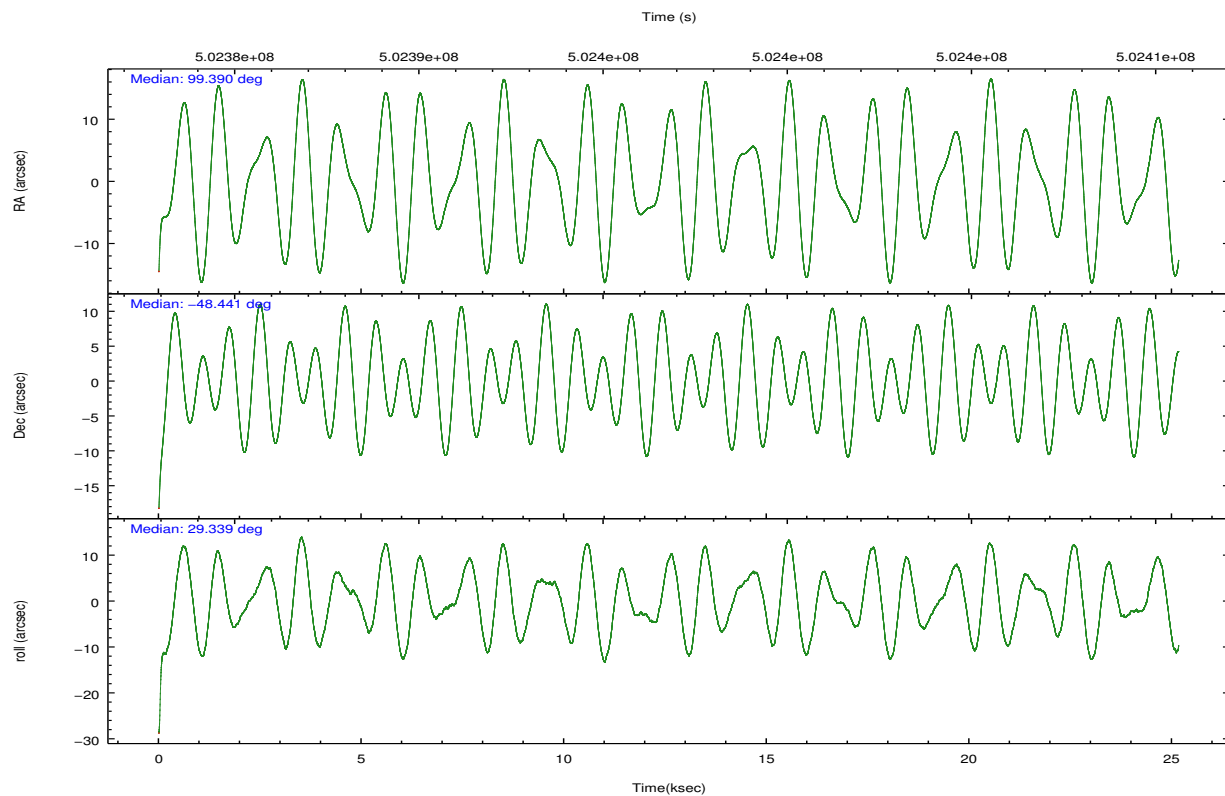
	ccd 0	ccd 1	ccd 2	ccd 3	ccd 6
grade 0 events	4559	6037	4923	13857	12639
	4%	5%	4%	10%	10%
grade 1 events	67	69	66	100	86
	0%	0%	0%	0%	0%
grade 2 events	3422	3950	3228	11802	3190
	3%	3%	2%	8%	2%
grade 3 events	1396	1433	1285	1765	1425
	1%	1%	1%	1%	1%
grade 4 events	1326	1473	1358	1800	1473
	1%	1%	1%	1%	1%
grade 5 events	5438	5875	5078	6352	6037
	5%	5%	4%	4%	4%
grade 6 events	2900	3377	2548	3116	3256
	2%	3%	2%	2%	2%
grade 7 events	83930	88519	99408	93941	96360
	81%	79%	84%	70%	77%

2.2 Compared Parameters

Parameter	Planned	Actual	Parameter	Planned	Actual
Instrument	ACIS	ACIS	Obspar format version number	7	7
Detector	ACIS-01236	ACIS-01236	Obspar file type	PREDICTED	ACTUAL
Grating	NONE	NONE	Obspar update status	NONE	UPDATED
Data mode	VFAINT	VFAINT	CCD I0 on	Y	Y
Observation mode	POINTING	POINTING	CCD I1 on	Y	Y
[deg] Pointing RA	99.368852	99.38982648088933	CCD I2 on	Y	Y
[deg] Pointing Dec	-48.465134	-48.44142966638693	CCD I3 on	Y	Y
[deg] Pointing Roll	29.122119	29.34649631448422	CCD S0 on	N	N
[mm] SIM focus pos	-0.782348	-0.7809083437167272	CCD S1 on	N	N
[mm] SIM defocus	0	0.001439871863259334	CCD S2 on	O1	Y
[mm] SIM translation stage pos	-225.842463	-225.8458576473255	CCD S3 on	N	N
[mm] SIM translation stage offset	-7.75	-7.746595355604228	CCD S4 on	N	N
[s] Observation start time (MET)	502384370.184000	502383426.57968	CCD S5 on	N	N
Observation start date	2013-12-02T15:11:43	2013-12-02T14:57:06	Number of optional ACIS chips dropped	0	0
[s] Observation end time (MET)	502409370.184000	502409604.56861	On-chip summing requested	N	N
Observation end date	2013-12-02T22:08:23	2013-12-02T22:13:24	Subarray requested	NONE	NONE
Read mode	TIMED	TIMED	Alternating exposures requested	N	N
			[s] Primary exposure time	0.000000	3.1

2.3 Aspect



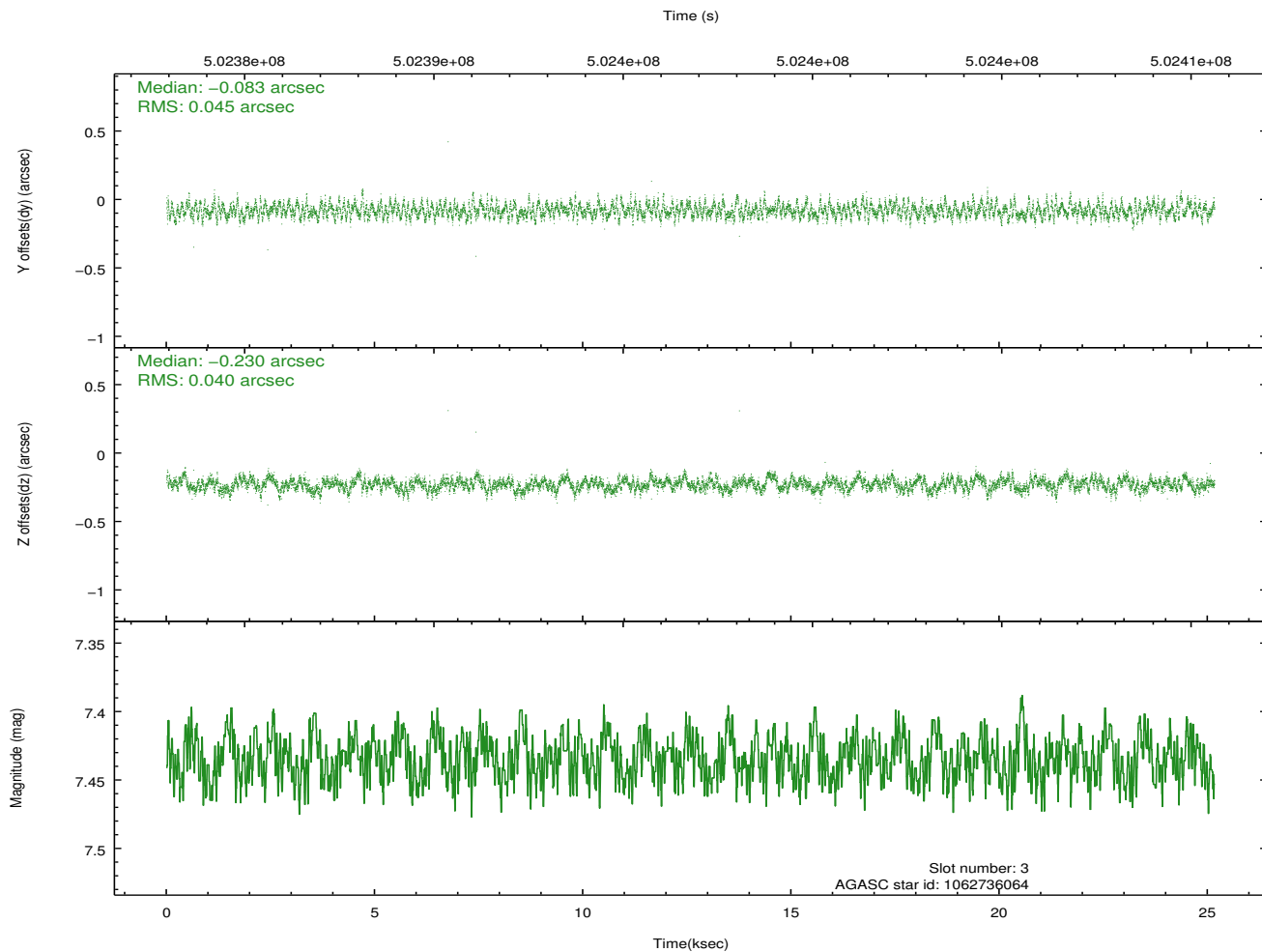
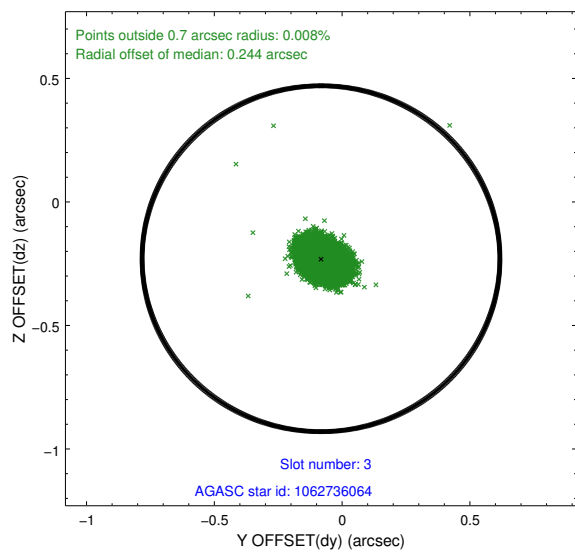
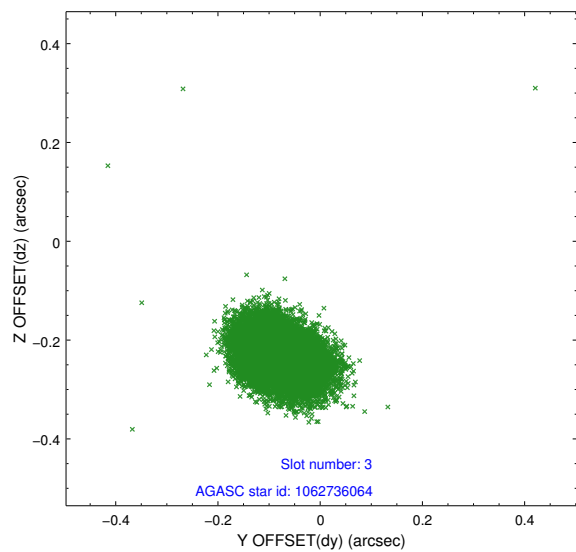


Slot Statistics

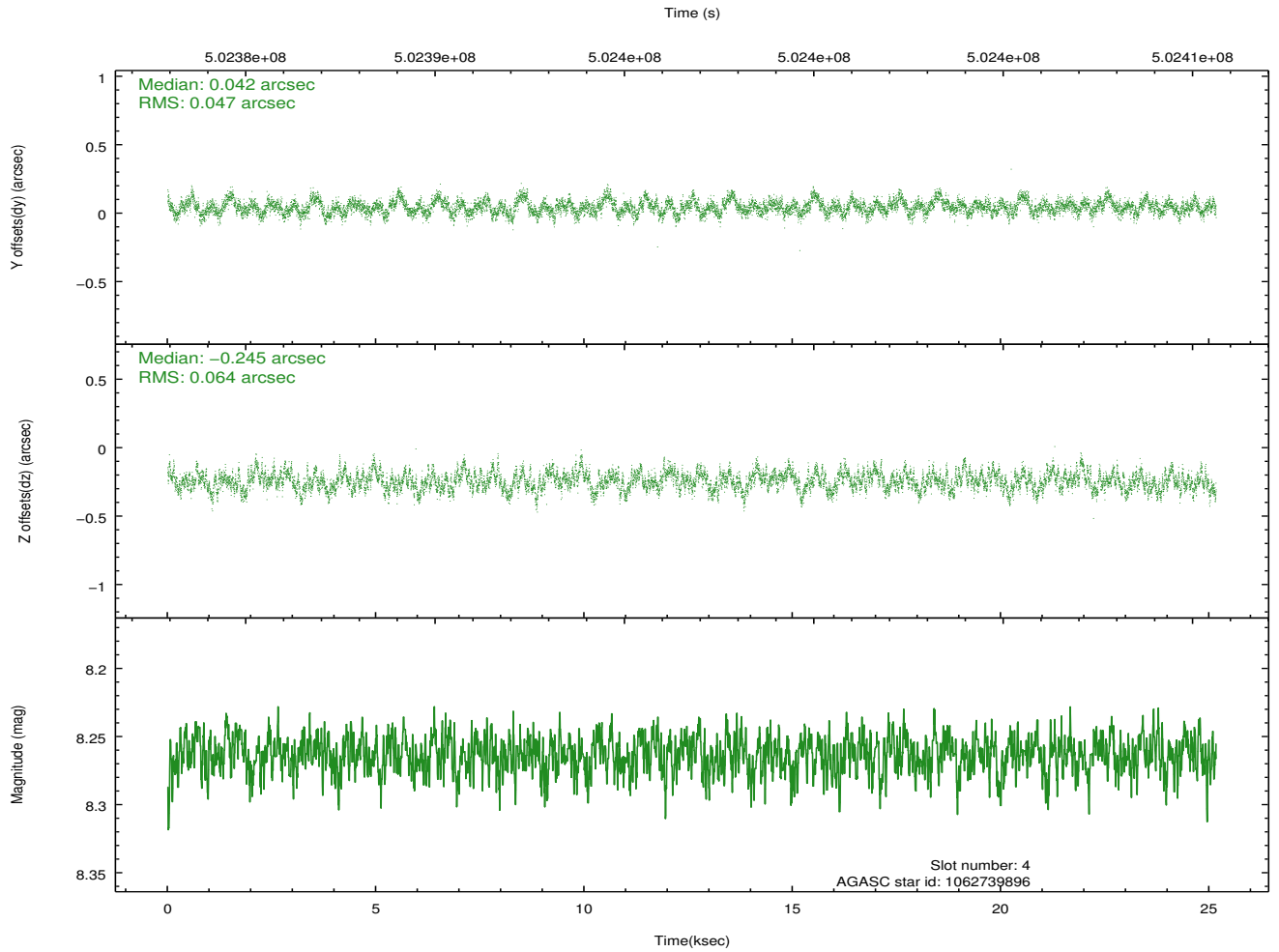
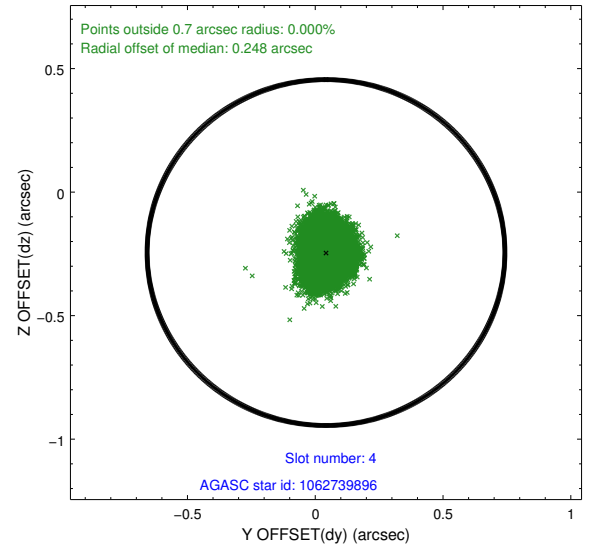
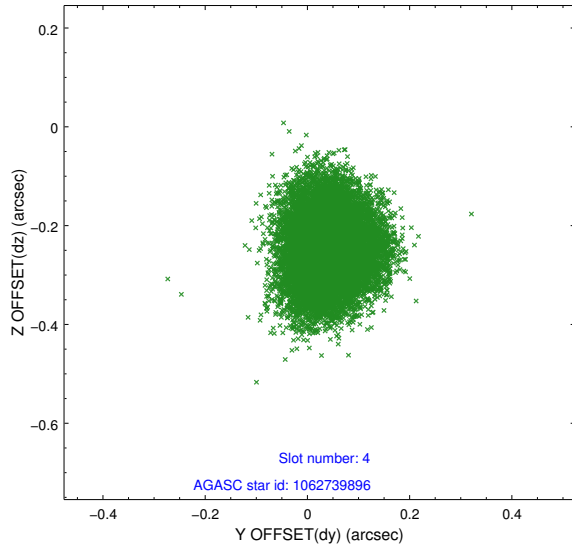
slot	status	used	id	mag	n_pts	med_dy	med_dz	dr1	dr2	ra	dec	mean_y	mean_z
0	FID		ACIS-I-1	7.19	6139	0.173	-0.150	0.018	0.026	0.000000	0.000000	922.38	-999.04
1	FID		ACIS-I-5	7.19	6139	-0.323	0.130	0.015	0.025	0.000000	0.000000	-1826.21	898.57
2	FID		ACIS-I-6	7.19	6139	0.062	0.093	0.008	0.015	0.000000	0.000000	387.62	1543.23
3	GUIDE	used	1062736064	7.43	12276	-0.083	-0.230	0.064	0.102	98.638615	-48.282728	-1212.64	1417.47
4	GUIDE	used	1062739896	8.26	12274	0.042	-0.245	0.085	0.137	98.957720	-47.987411	-29.67	1982.15
5	GUIDE	used	1062744520	8.95	12270	-0.101	-0.173	0.102	0.163	99.638796	-47.733588	1852.15	1981.92
6	GUIDE	used	1063259640	8.13	12275	0.195	0.423	0.074	0.119	99.154399	-49.221327	-1764.84	-2132.96
7	GUIDE	used	1063262280	8.59	12273	-0.056	0.231	0.079	0.129	100.289776	-48.865119	1198.49	-2330.35

2.4 Star Slots

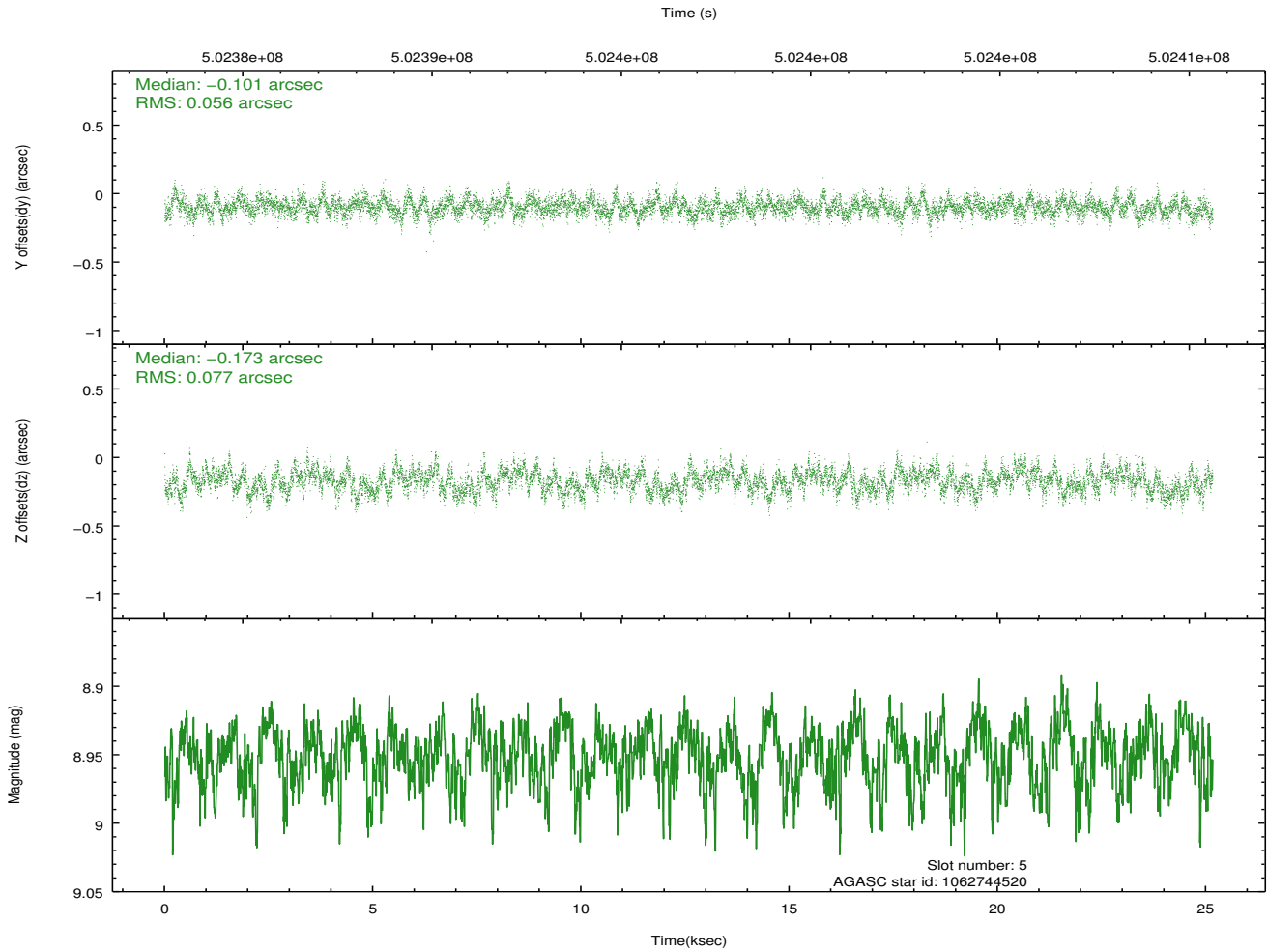
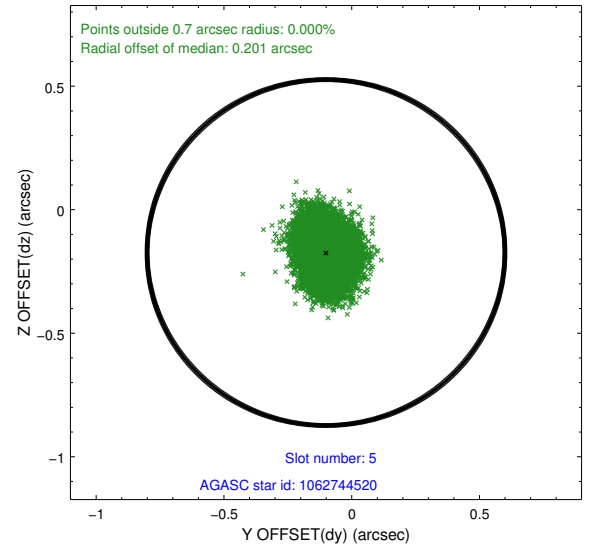
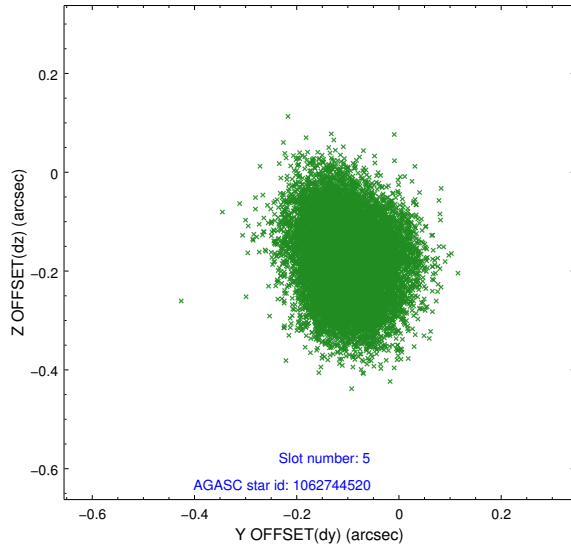
2.4.1 Slot 3



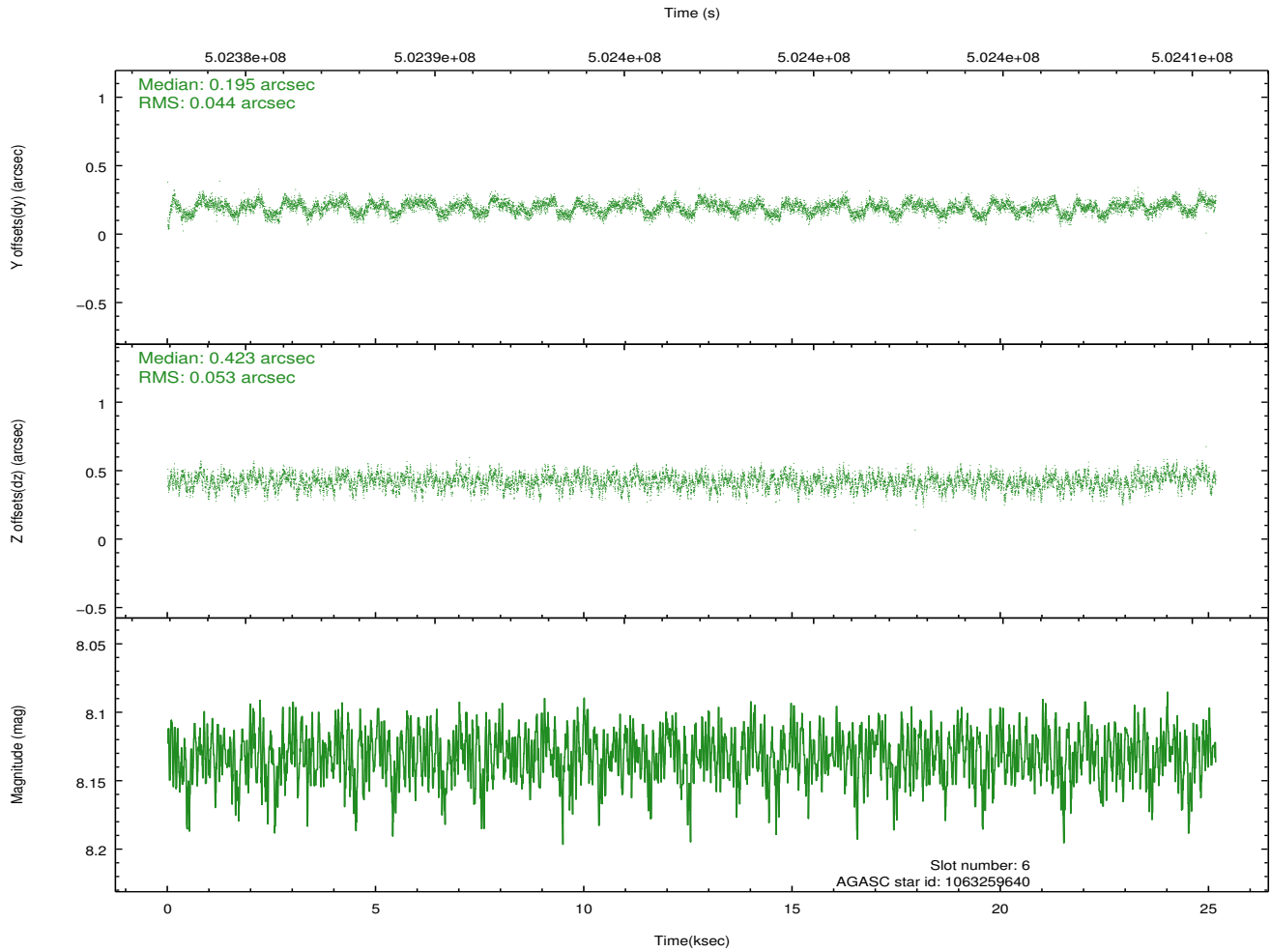
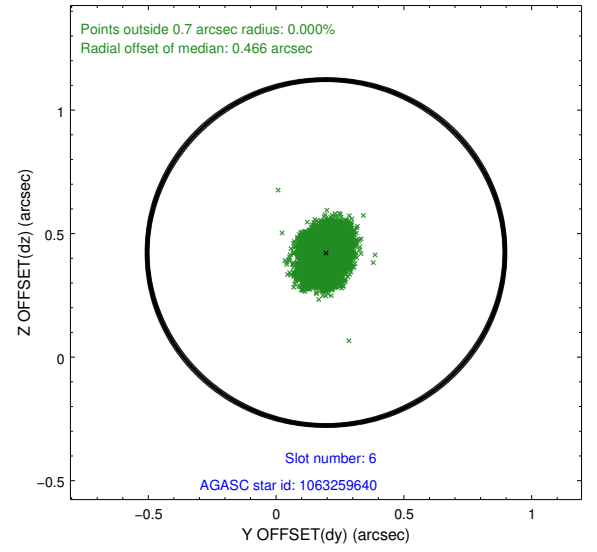
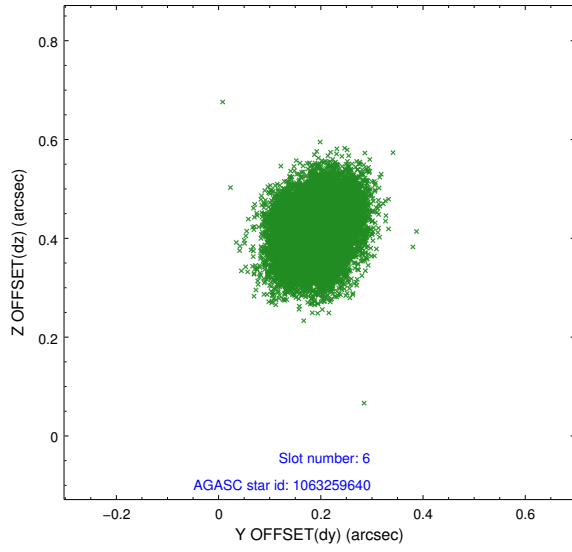
2.4.2 Slot 4



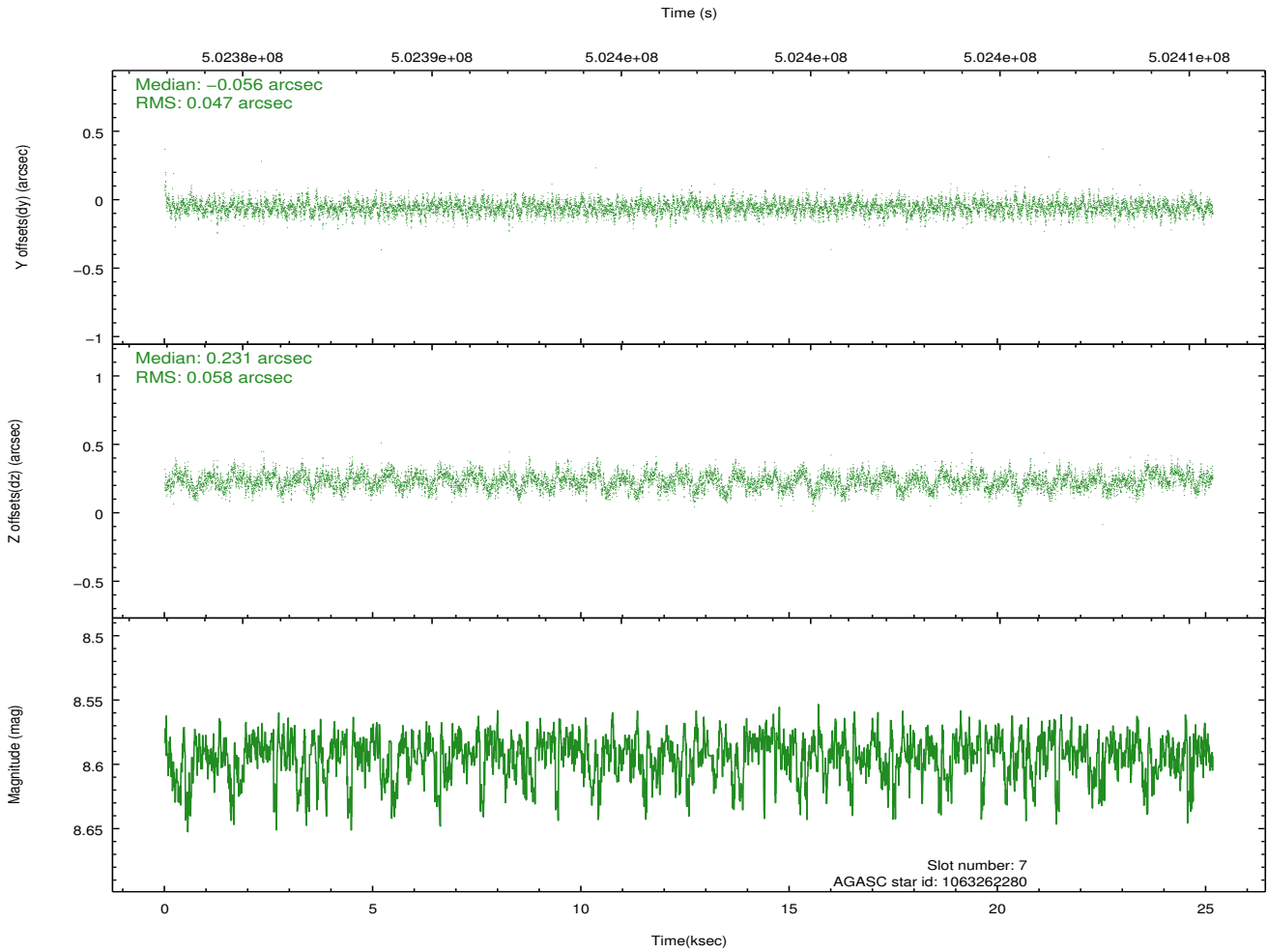
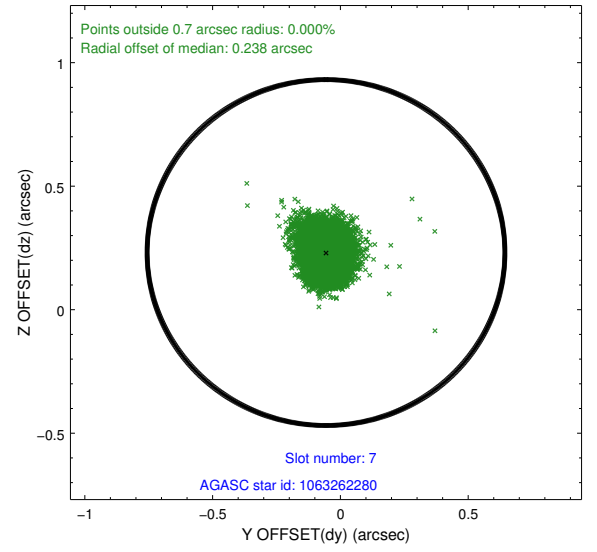
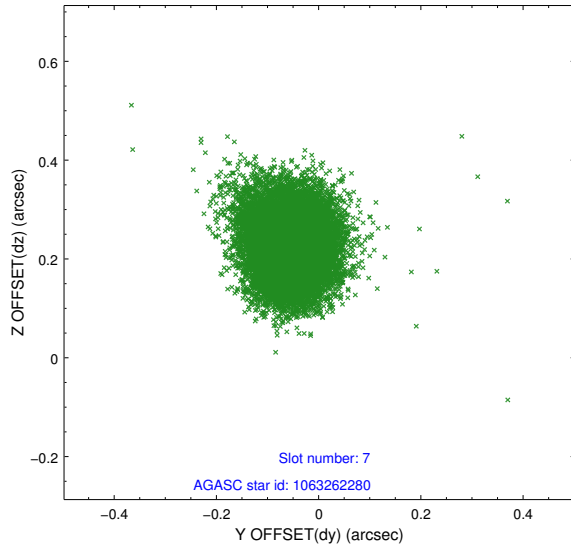
2.4.3 Slot 5



2.4.4 Slot 6

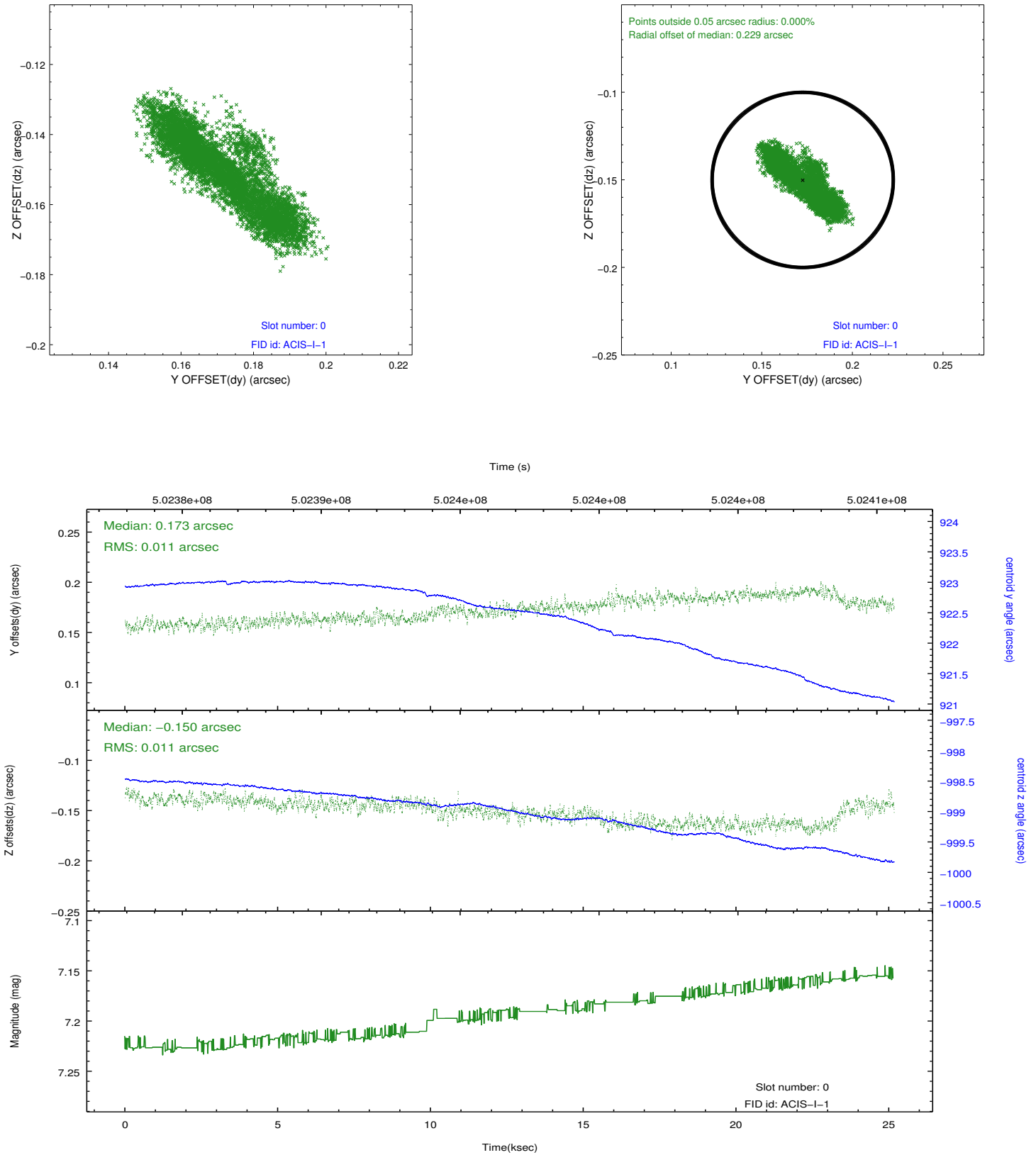


2.4.5 Slot 7

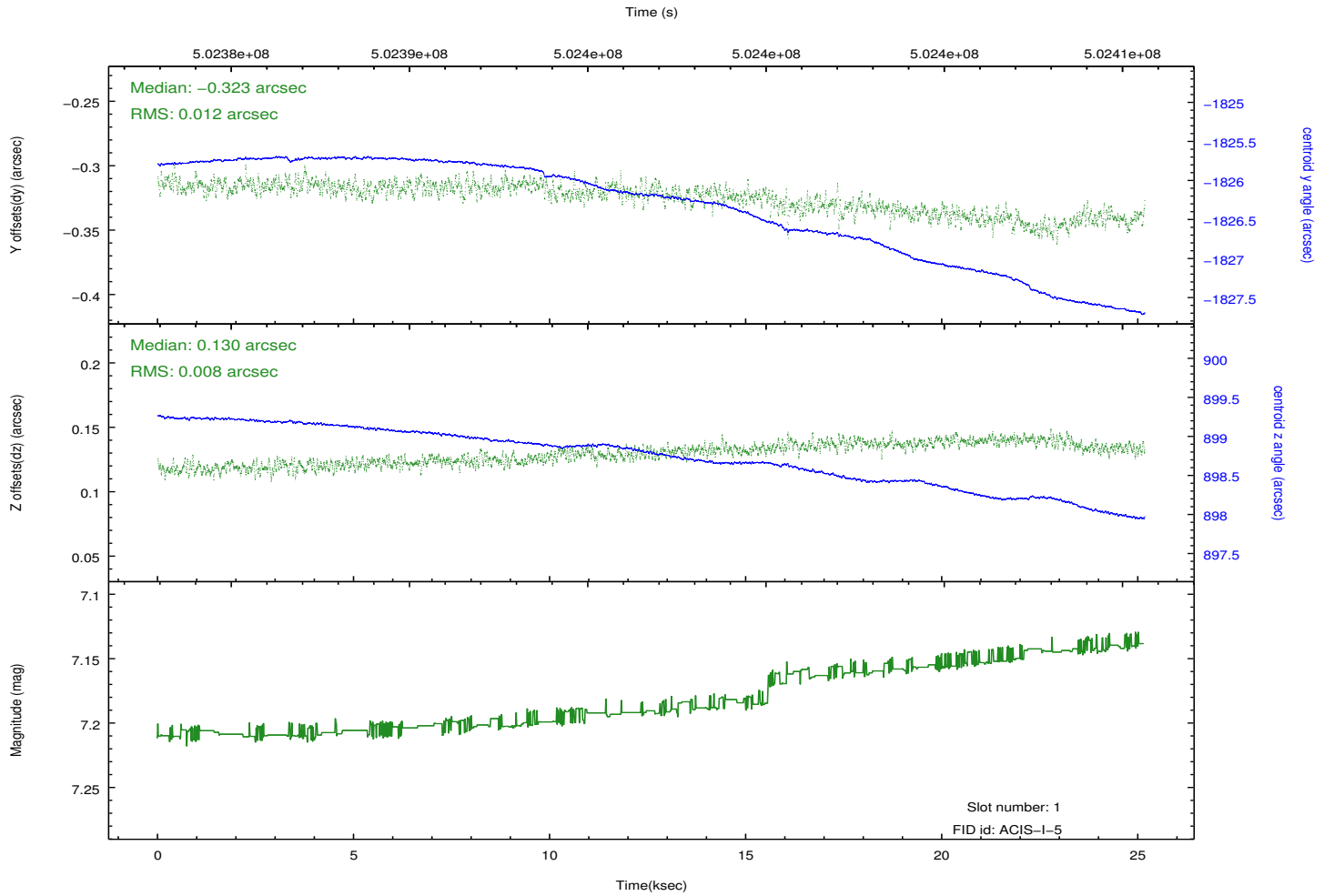
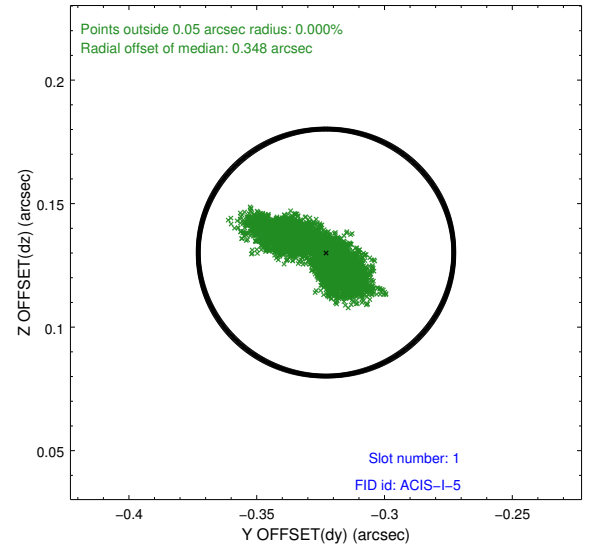
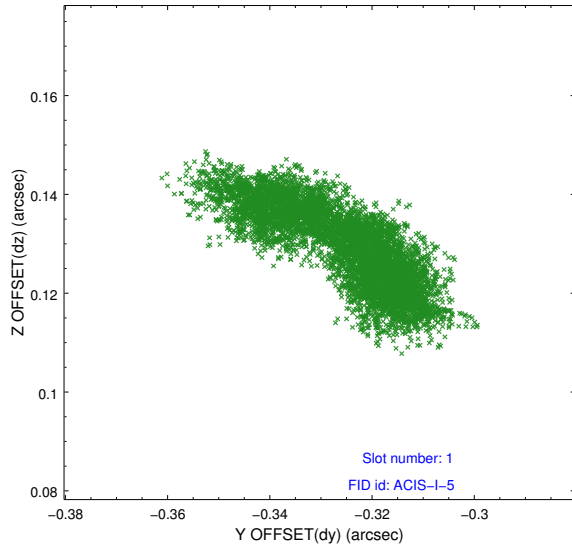


2.5 FID Slots

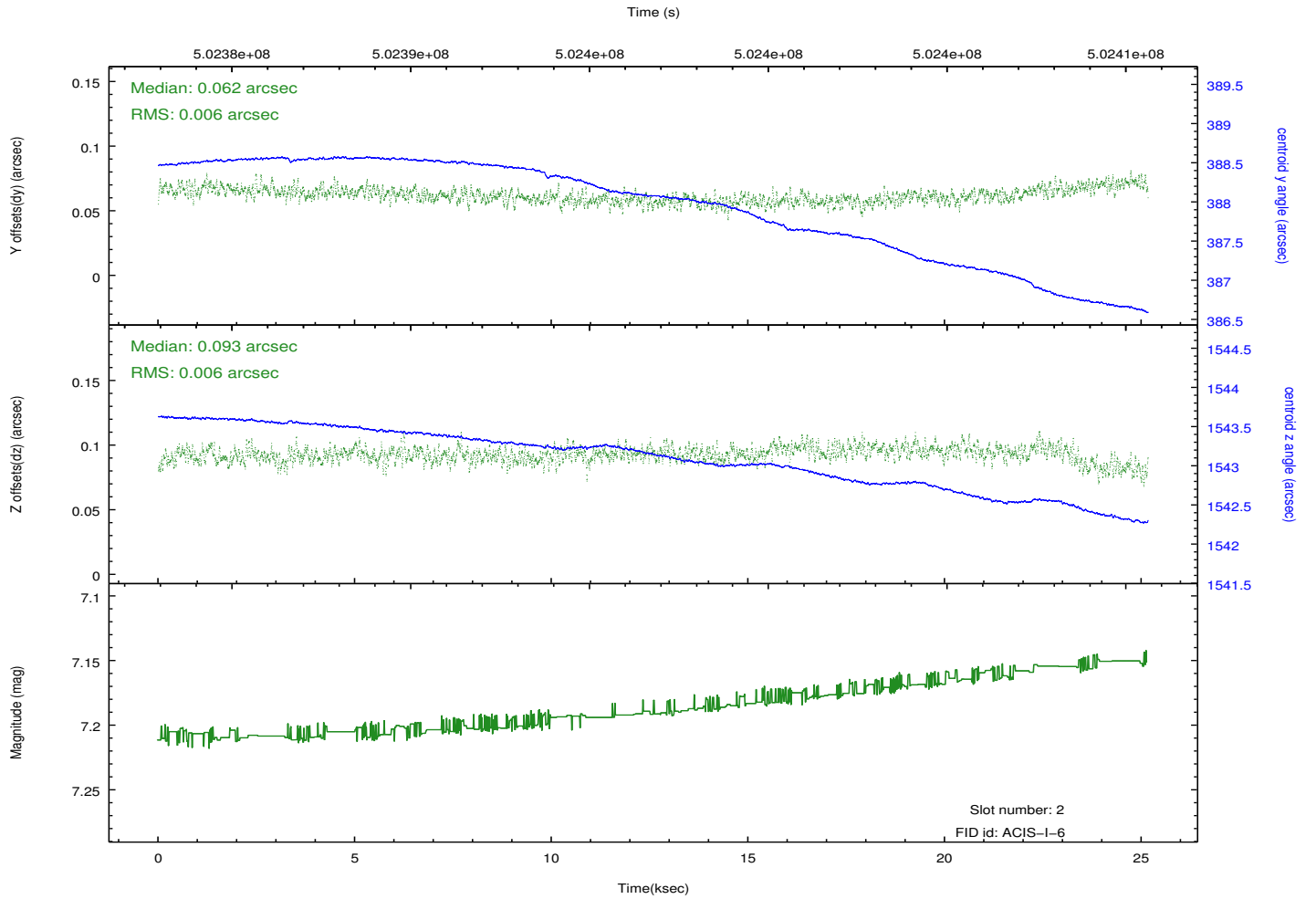
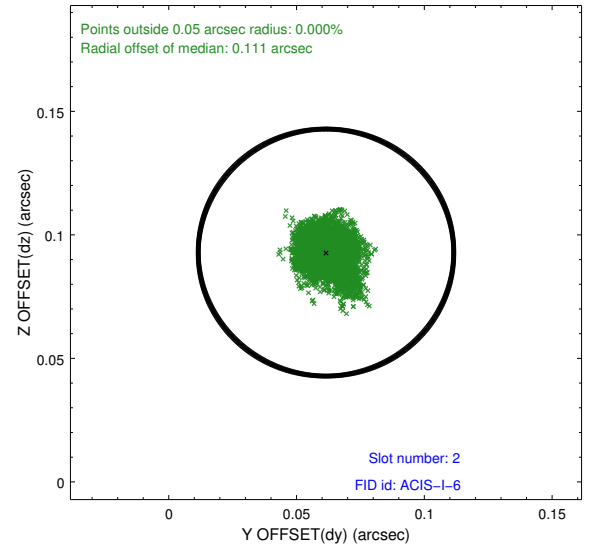
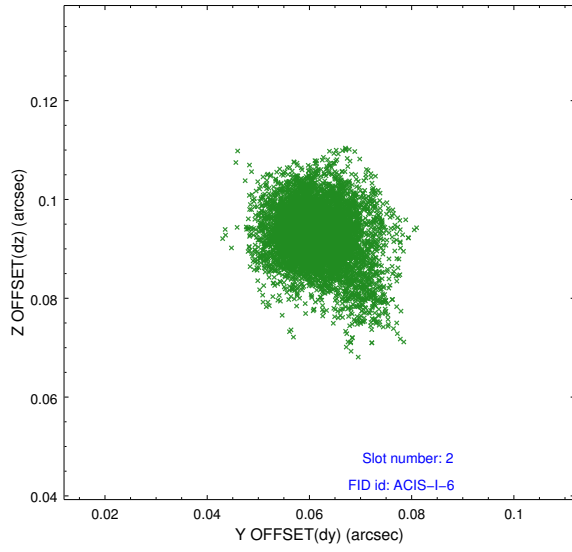
2.5.1 Slot 0



2.5.2 Slot 1



2.5.3 Slot 2



A Summary

A.1 Status

V&V Scientist	Beth Sundheim
V&V Date (YYYY-MM-DD)	2014.12.11
V&V Edition	1
V&V Disposition and Status	OK
V&V Charge Time	25.085200192928

A.2 Comments

These data have been reprocessed with new aspect alignment calibration files that correct small mean offsets (up to 0.4 arcsecs) and improve overall astrometric accuracy. The new calibration was determined using data from the time period being reprocessed and was performed using cross-correlation of X-ray sources with radio and optical counterparts.