

# V&V Reference Report

## L2 ASCDS Version : 8.4.5

Observation 15577 - L2 Version 2  
Chandra X-Ray Center

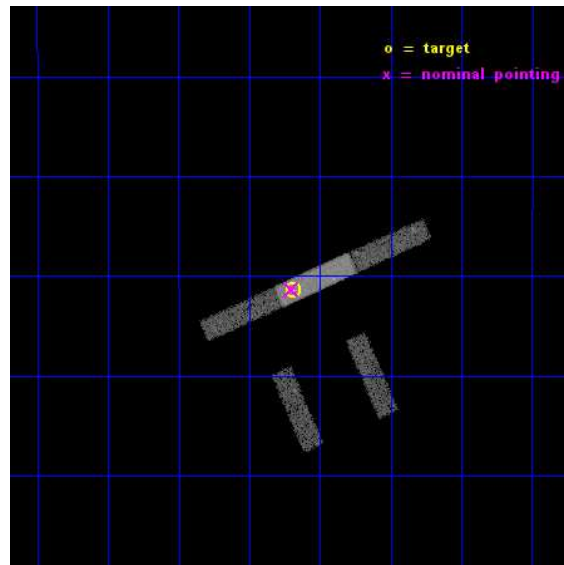
L2 Processing Date : Nov 28 2014

## Contents

<b>1</b>	<b>Front</b>	<b>2</b>
<b>2</b>	<b>OBI</b>	<b>3</b>
2.1	OBI . . . . .	3
2.1.1	Images . . . . .	3
2.1.2	Bias . . . . .	3
2.1.3	Parameters . . . . .	4
2.1.4	Events . . . . .	4
2.2	Compared Parameters . . . . .	5
2.3	Aspect . . . . .	6
2.4	Star Slots . . . . .	9
2.4.1	Slot 3 . . . . .	9
2.4.2	Slot 4 . . . . .	10
2.4.3	Slot 5 . . . . .	11
2.4.4	Slot 6 . . . . .	12
2.4.5	Slot 7 . . . . .	13
2.5	FID Slots . . . . .	14
2.5.1	Slot 0 . . . . .	14
2.5.2	Slot 1 . . . . .	15
2.5.3	Slot 2 . . . . .	16
<b>A</b>	<b>Summary</b>	<b>17</b>
A.1	Status . . . . .	17
A.2	Comments . . . . .	17

# 1 Front

seq_num	702843	Sequence number
obs_id	15577	Observation id
title	Are Double-Peaked Optical Emission Lines Reliable Indicators of Dual AGNs?	Proposal title
observer	Dr. Claire Max	Principal investigator
object	SDSS J020011.52-093126.1	Source name
dtcycle	0	&#160
cycle	P	events from which exps? Prim/Second/Both
ra_targ	30.047917	Observer's specified target RA [deg]
dec_targ	-9.523917	Observer's specified target Dec [deg]
ra_nom	30.050460006854	Nominal RA [deg]
dec_nom	-9.5222361924618	Nominal Dec [deg]
roll_nom	336.15703777487	Nominal Roll [deg]
revision	2	Processing version of data
ontime	20057.919460714	Sum of GTIs [s]
livetime	19267.193826091	Livetime [s]
ontime2	20057.755300701	Sum of GTIs [s]
ontime3	20057.837380707	Sum of GTIs [s]
ontime6	20057.878420711	Sum of GTIs [s]
ontime7	20057.919460714	Sum of GTIs [s]
ontime8	20057.796340704	Sum of GTIs [s]
l2events	30999	Number of level 2 events

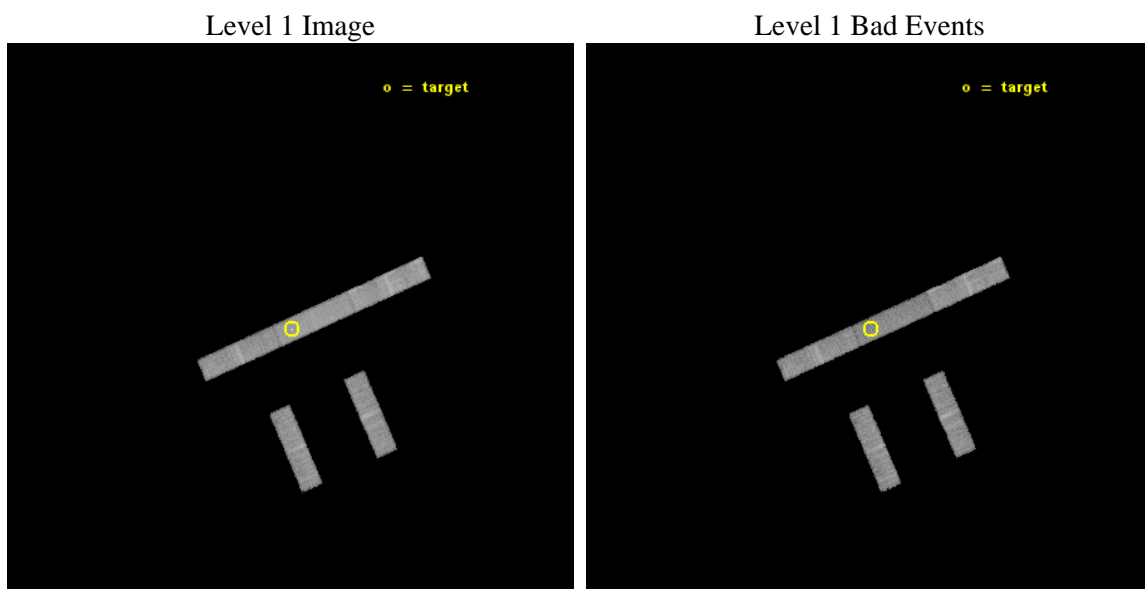




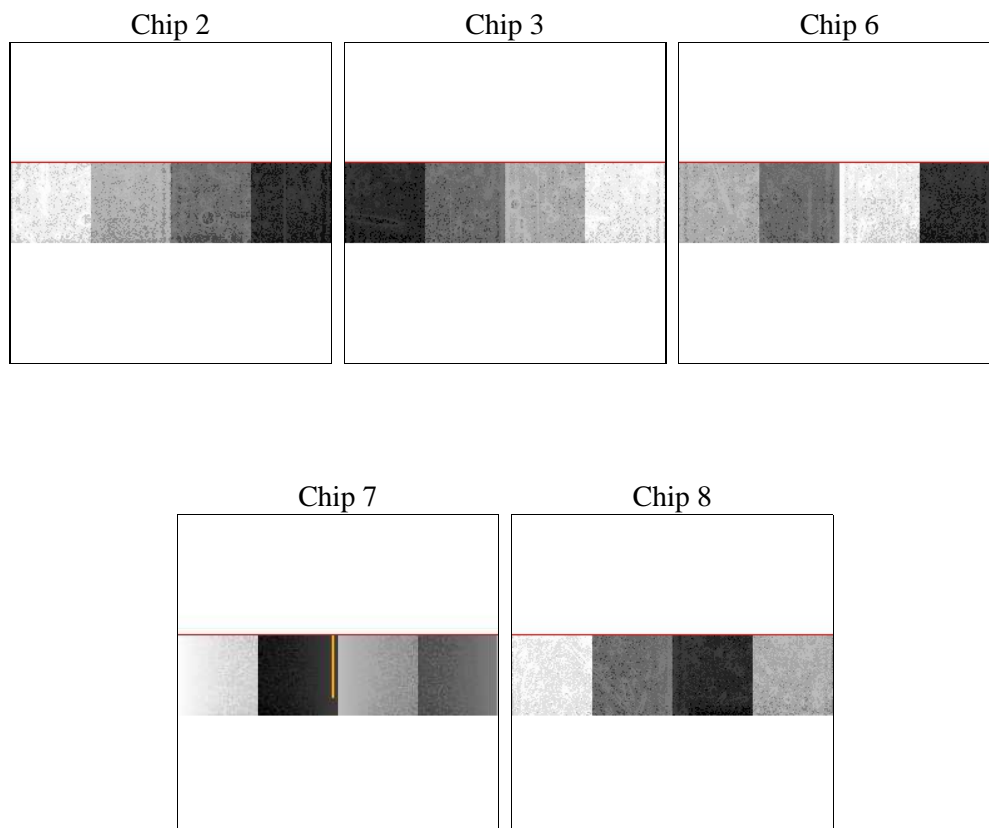
## 2 OBI

### 2.1 OBI

#### 2.1.1 Images



#### 2.1.2 Bias



### 2.1.3 Parameters

obi_num	0	Obi number	sched_exp_time	20000.000000	[s] Scheduled observation exposure time
ascdsver	10.3	Processing system revision	ontime	20057.919460714	Sum of GTIs [s]
caldbver	4.6.4	&#160	ontime2	20057.755300701	Sum of GTIs [s]
date	2014-11-29T08:55:43	Date and time of file creation	ontime3	20057.837380707	Sum of GTIs [s]
revision	2	Processing version of data	ontime6	20057.878420711	Sum of GTIs [s]
			ontime7	20057.919460714	Sum of GTIs [s]
			ontime8	20057.796340704	Sum of GTIs [s]
			l1events	179262	Number of level 1 events

### 2.1.4 Events

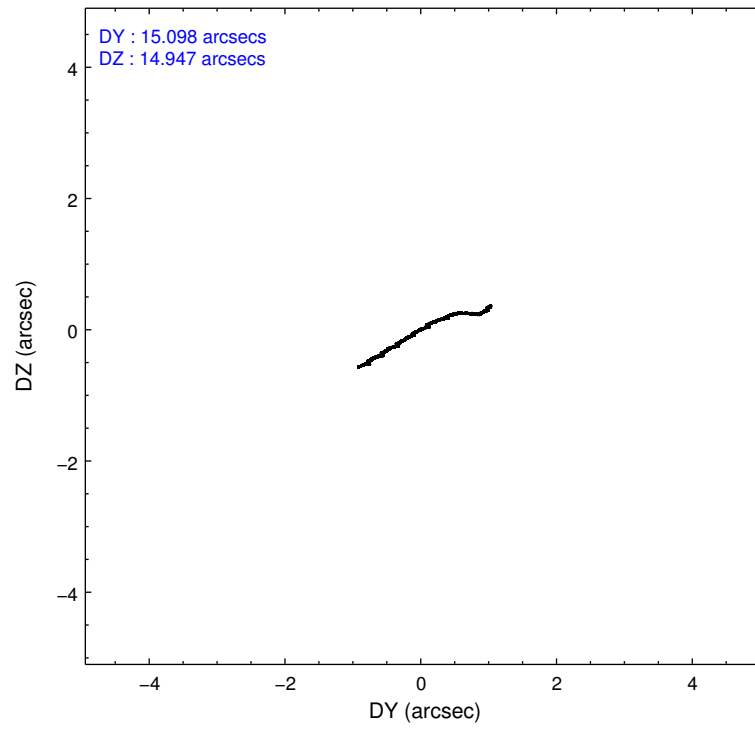
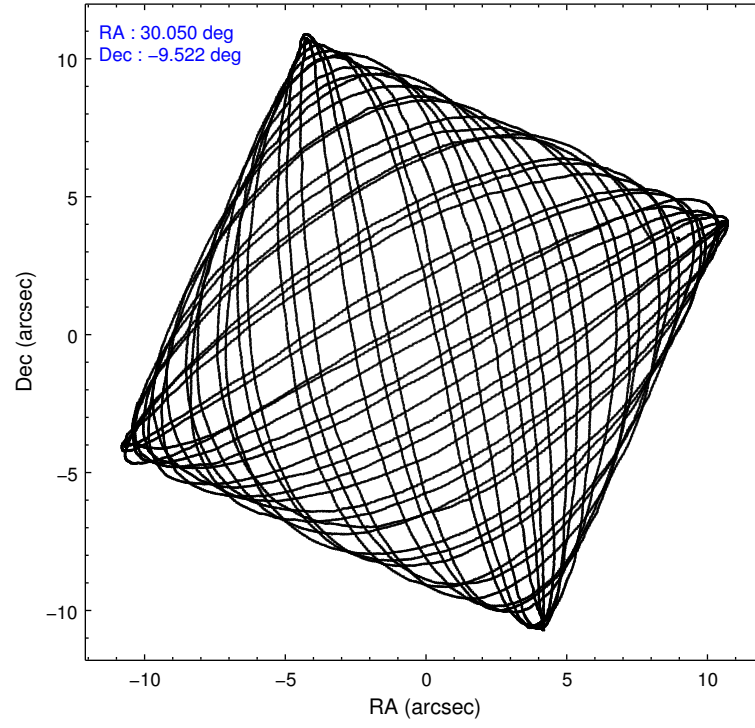
	ccd 2	ccd 3	ccd 6	ccd 7	ccd 8
level 1 events	30582	30598	32928	40801	44353
rejected events	27055	27275	29071	21439	34374
rejected %	88%	89%	88%	52%	77%

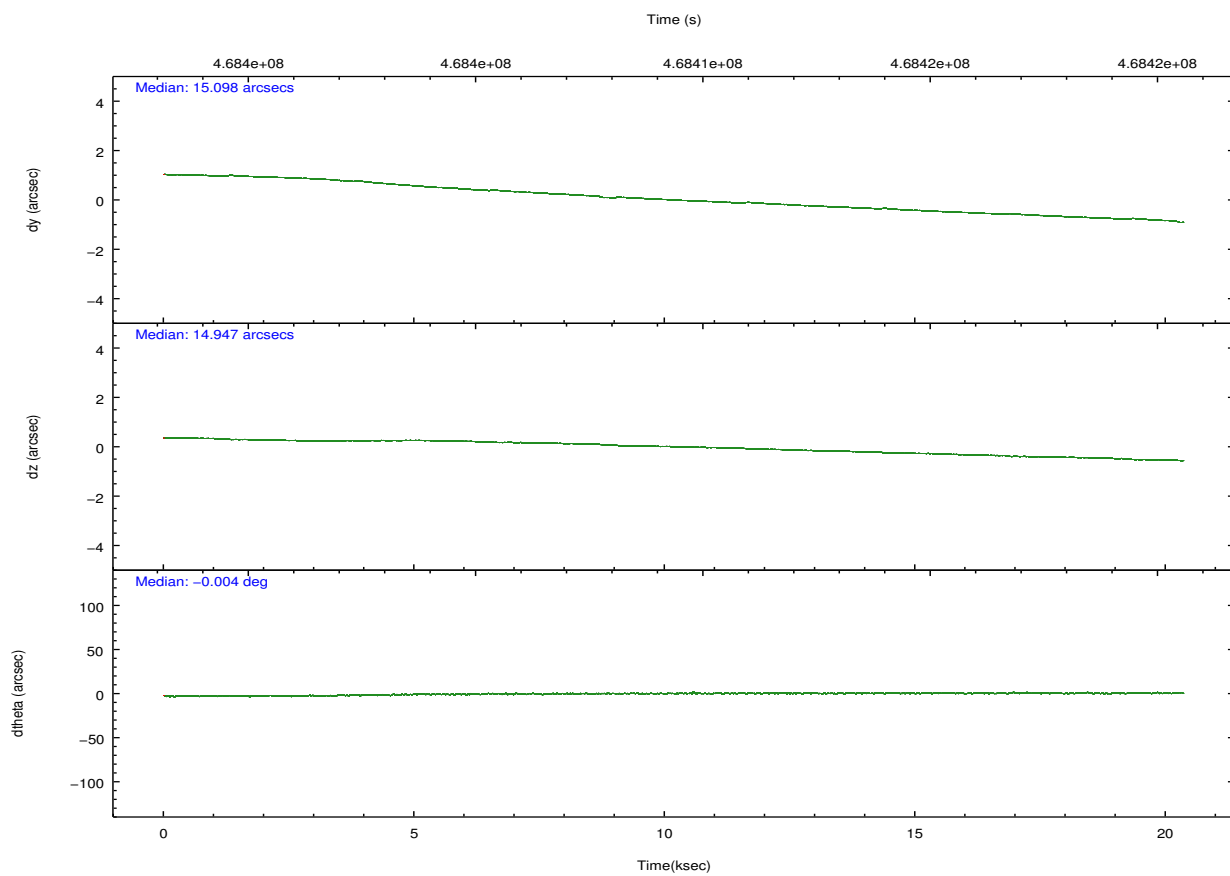
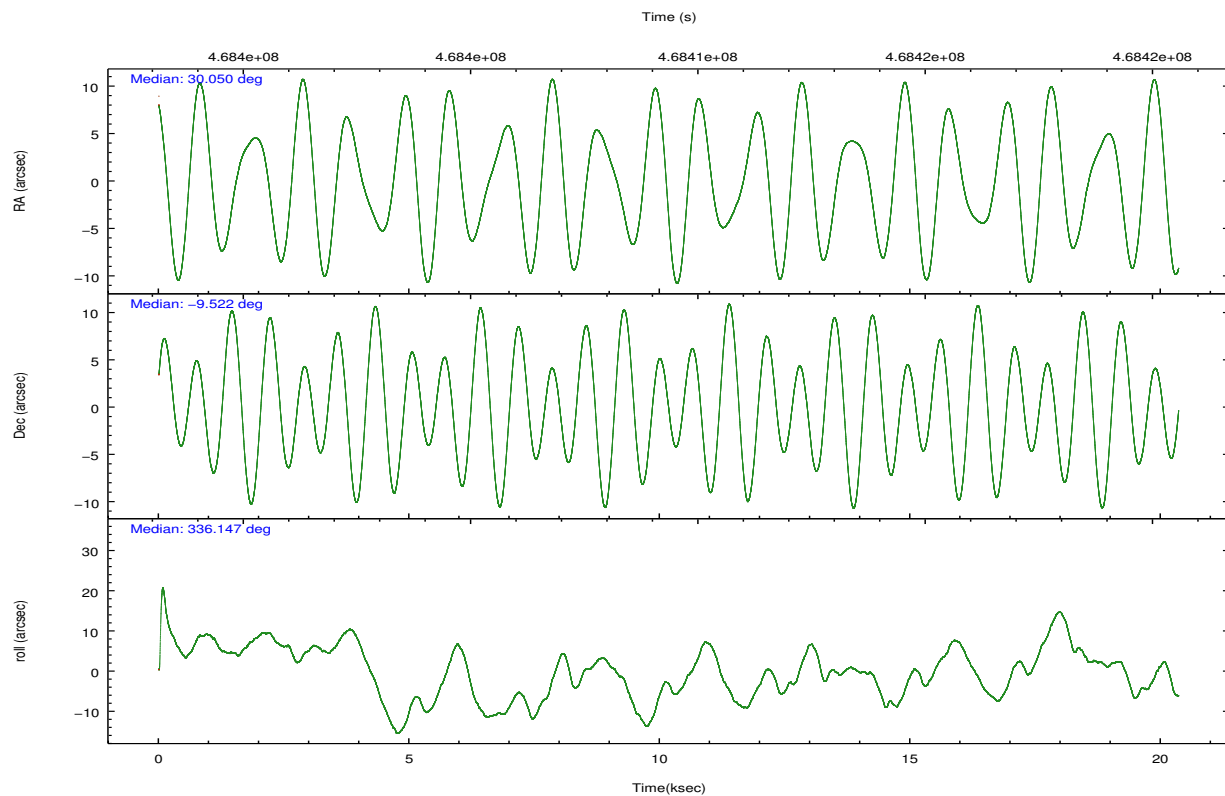
	ccd 2	ccd 3	ccd 6	ccd 7	ccd 8
grade 0 events	1085	986	1159	2196	2613
	3%	3%	3%	5%	5%
grade 1 events	10	18	9	67	20
	0%	0%	0%	0%	0%
grade 2 events	759	670	817	4048	2300
	2%	2%	2%	9%	5%
grade 3 events	533	515	523	2039	1121
	1%	1%	1%	4%	2%
grade 4 events	529	468	561	2050	1028
	1%	1%	1%	5%	2%
grade 5 events	1231	1475	1413	4183	2080
	4%	4%	4%	10%	4%
grade 6 events	622	685	797	9032	2918
	2%	2%	2%	22%	6%
grade 7 events	25813	25781	27649	17186	32273
	84%	84%	83%	42%	72%

## 2.2 Compared Parameters

Parameter	Planned	Actual	Parameter	Planned	Actual
Instrument	ACIS	ACIS	Obspar format version number	7	7
Detector	ACIS-23678	ACIS-23678	Obspar file type	PREDICTED	ACTUAL
Grating	NONE	NONE	Obspar update status	NONE	UPDATED
Data mode	VFAINT	VFAINT	CCD I0 on	N	N
Observation mode	POINTING	POINTING	CCD I1 on	N	N
[deg] Pointing RA	30.022953	30.05046000685412	CCD I2 on	O2	Y
[deg] Pointing Dec	-9.525546	-9.522236192461783	CCD I3 on	O3	Y
[deg] Pointing Roll	335.995869	336.1570377748723	CCD S0 on	N	N
[mm] SIM focus pos	-0.684267	-0.6828225247311905	CCD S1 on	N	N
[mm] SIM defocus	0	0.001444936568705701	CCD S2 on	O4	Y
[mm] SIM translation stage pos	-190.132523	-190.1400660498719	CCD S3 on	Y	Y
[mm] SIM translation stage offset	0	0.00754346686406393	CCD S4 on	O1	Y
[s] Observation start time (MET)	468399537.184000	468398598.53542	CCD S5 on	N	N
Observation start date	2012-11-04T06:57:50	2012-11-04T06:43:18	Number of optional ACIS chips dropped	0	0
[s] Observation end time (MET)	468419537.184000	468420239.36159	On-chip summing requested	N	N
Observation end date	2012-11-04T12:31:10	2012-11-04T12:43:59	Subarray requested	CUSTOM	1/4
Read mode	TIMED	TIMED	Subarray start row	385	385
			Subarray row count	256	256
			Alternating exposures requested	N	N
			[s] Primary exposure time	0.000000	1

## 2.3 Aspect



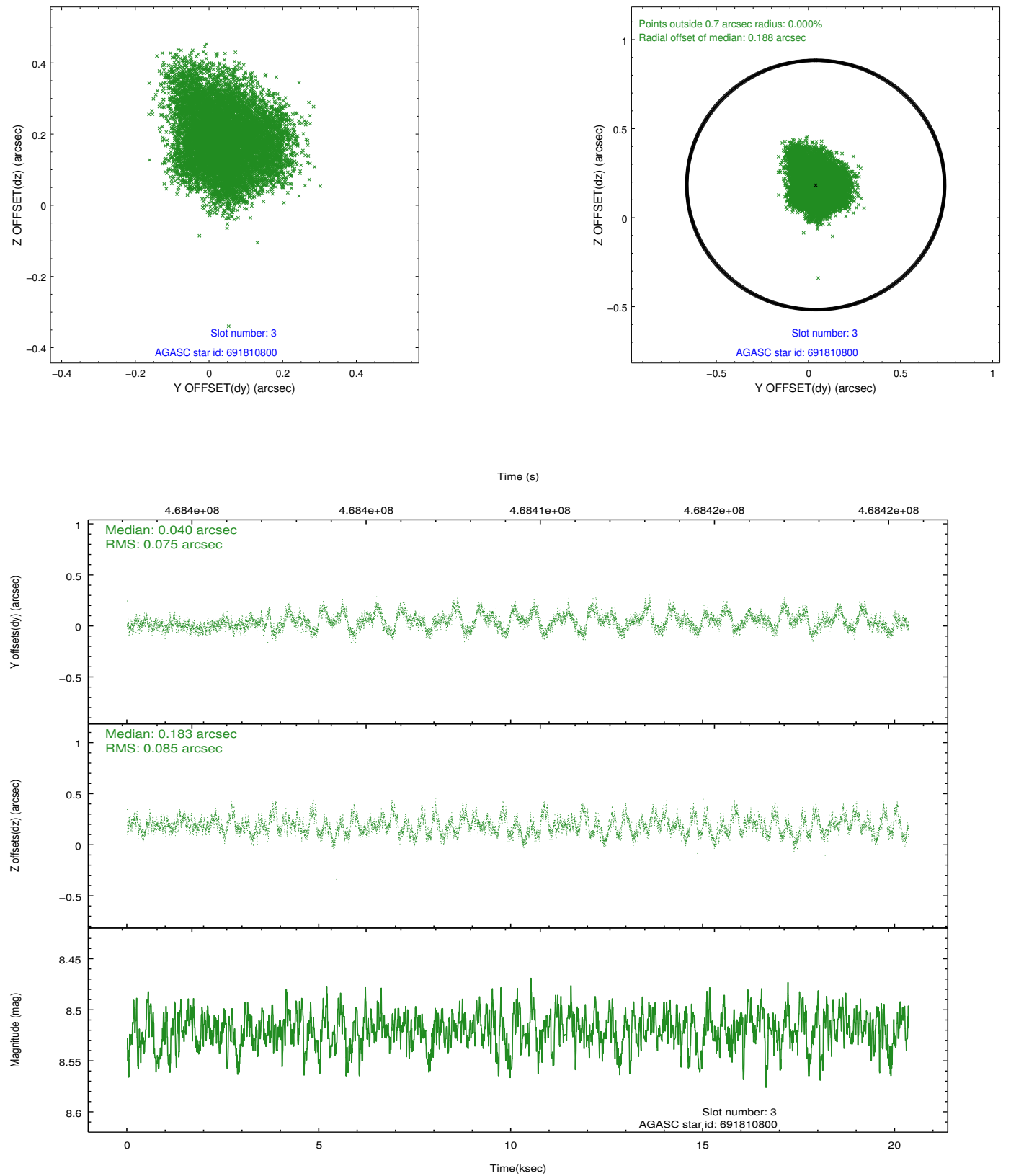


### Slot Statistics

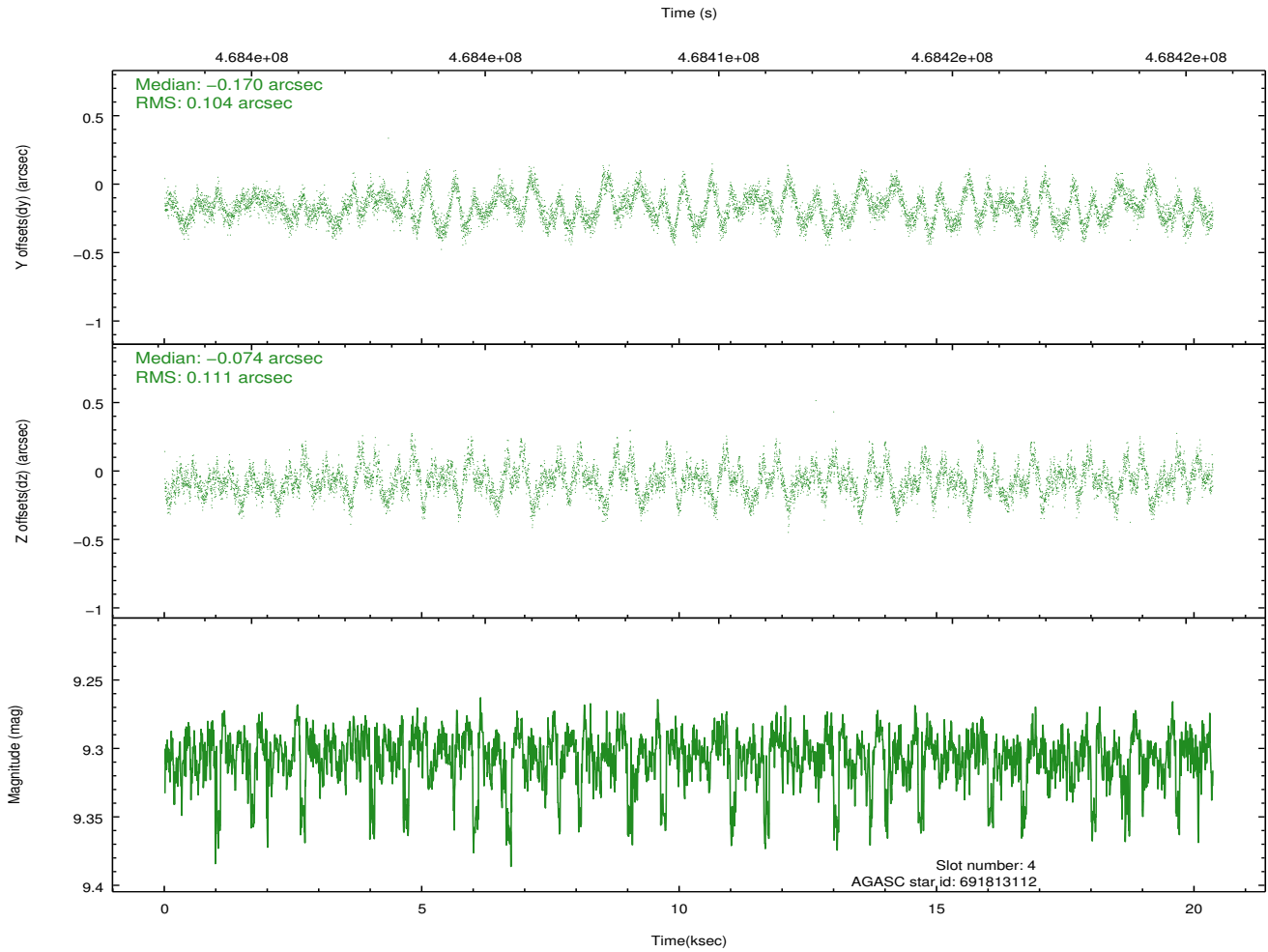
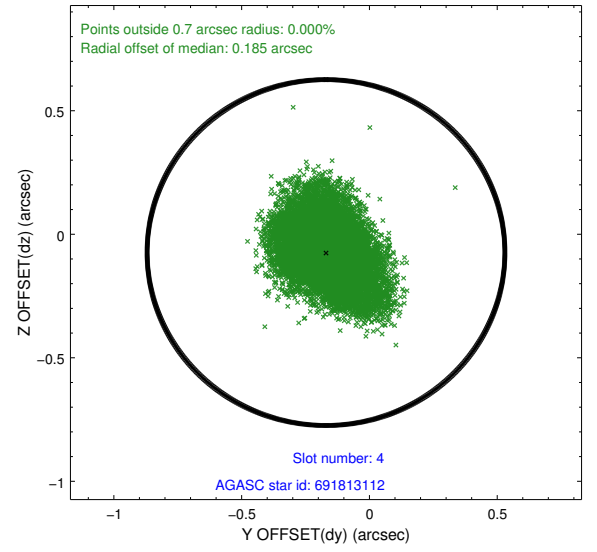
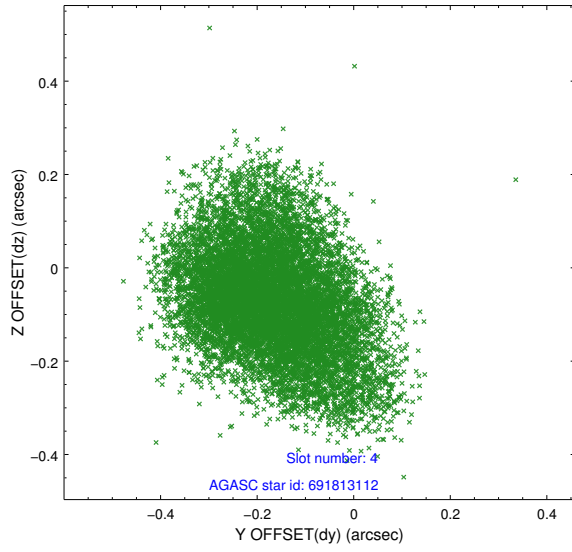
slot	status	used	id	mag	n_pts	med_dy	med_dz	dr1	dr2	ra	dec	mean_y	mean_z
0	FID		ACIS-S-2	6.98	4966	-0.129	-0.024	0.012	0.030	0.000000	0.000000	-768.25	-1736.32
1	FID		ACIS-S-4	7.07	4966	0.270	0.068	0.010	0.019	0.000000	0.000000	2145.33	172.09
2	FID		ACIS-S-5	7.09	4966	-0.174	-0.037	0.019	0.037	0.000000	0.000000	-1820.92	165.84
3	GUIDE	used	691810800	8.52	9923	0.040	0.183	0.123	0.190	29.827543	-9.580078	-552.57	-461.38
4	GUIDE	used	691813112	9.30	9866	-0.170	-0.074	0.163	0.265	30.238018	-9.410054	529.07	690.41
5	GUIDE	used	691816448	8.86	9926	-0.013	0.079	0.121	0.193	30.462204	-9.761212	1769.73	-142.85
6	GUIDE	used	691817096	8.31	9931	-0.019	-0.008	0.098	0.167	29.769058	-8.981725	-1620.53	1420.86
7	GUIDE	used	691812656	9.70	9913	0.187	-0.141	0.428	0.711	30.375969	-10.382439	2399.47	-2309.37

## 2.4 Star Slots

### 2.4.1 Slot 3

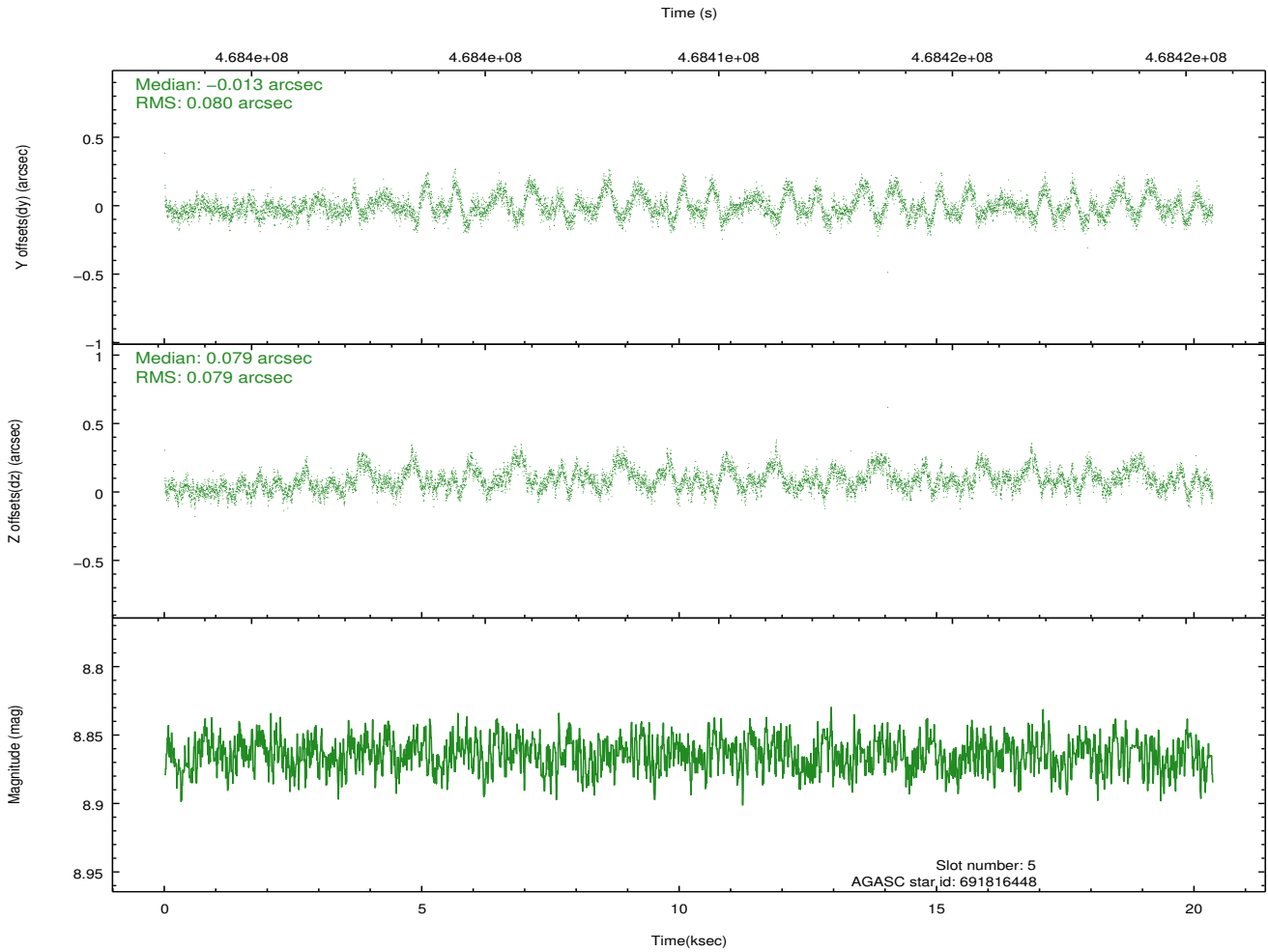
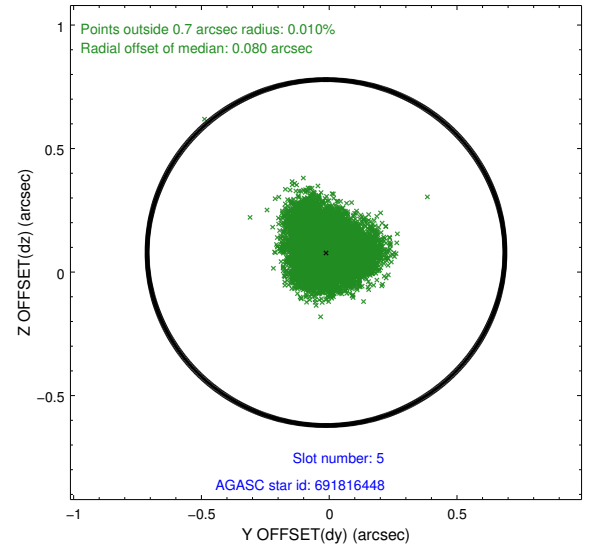
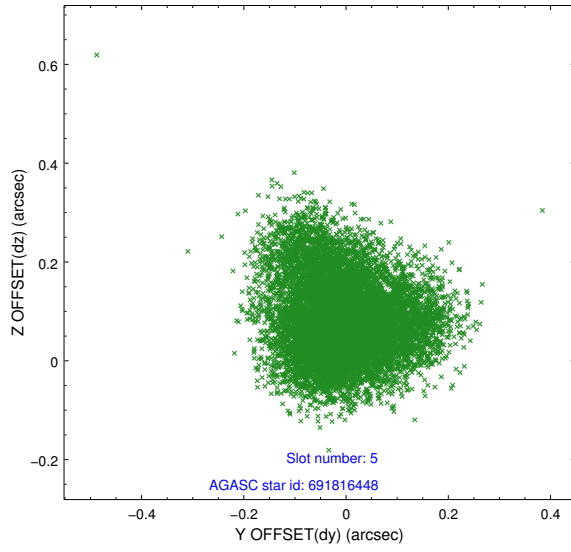


## 2.4.2 Slot 4

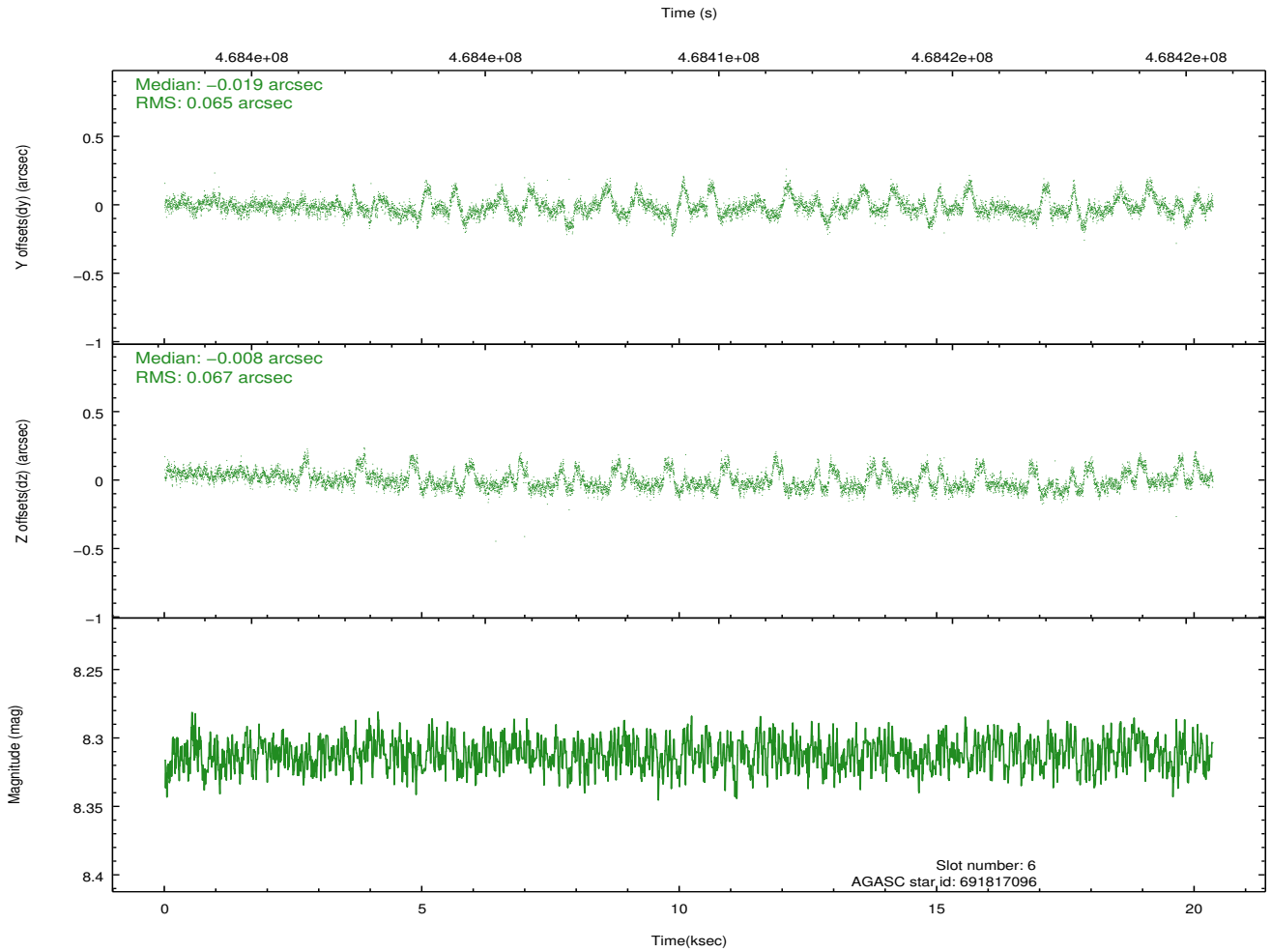
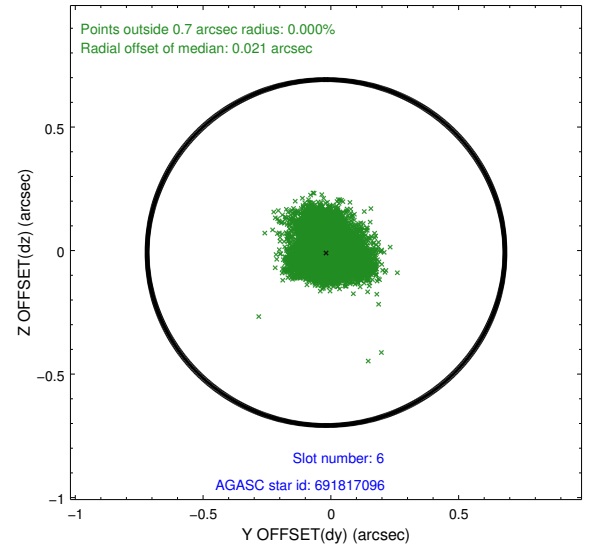
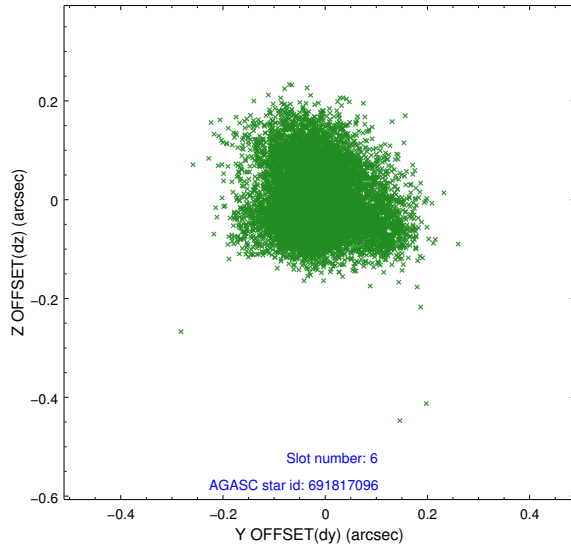




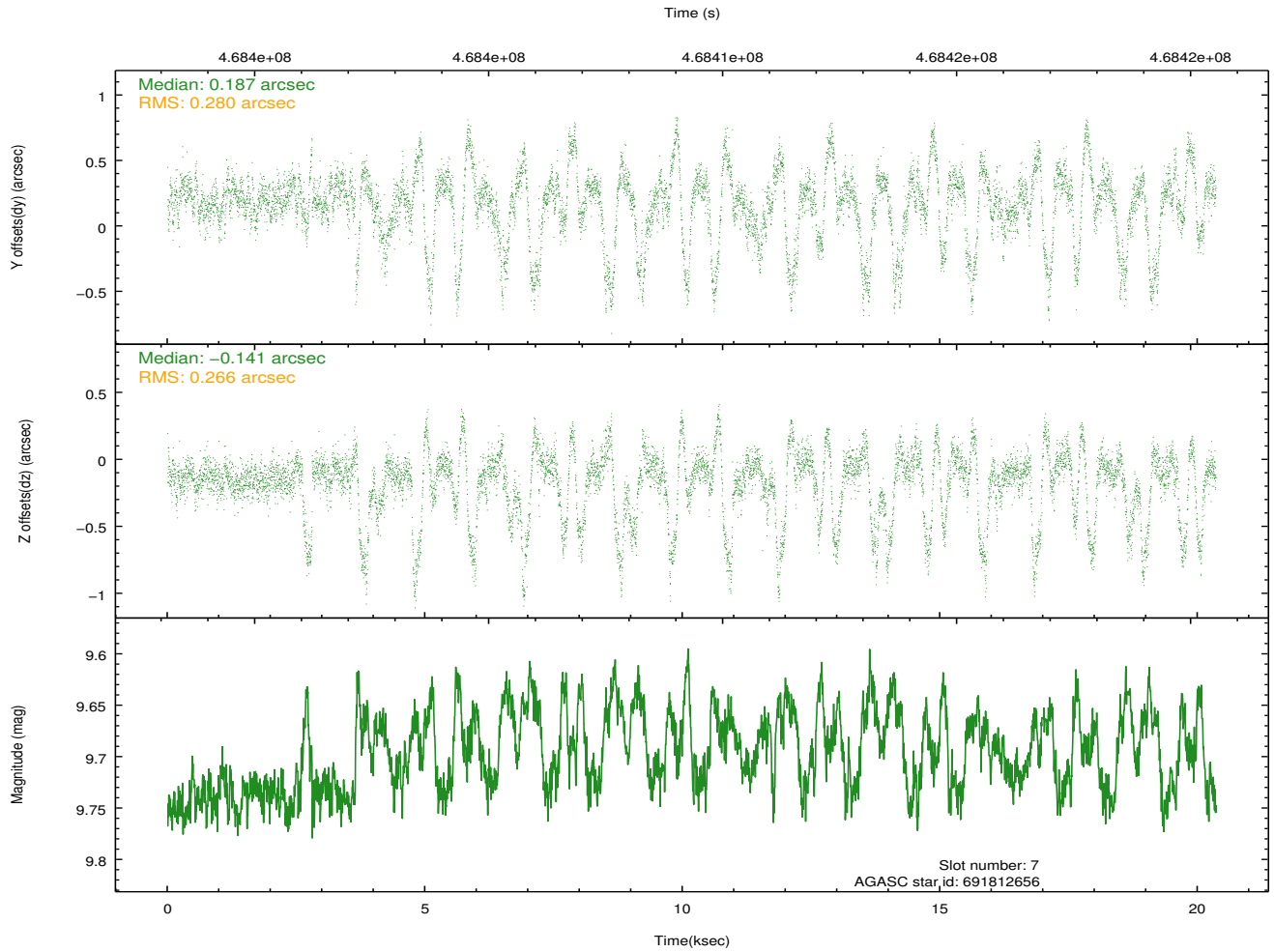
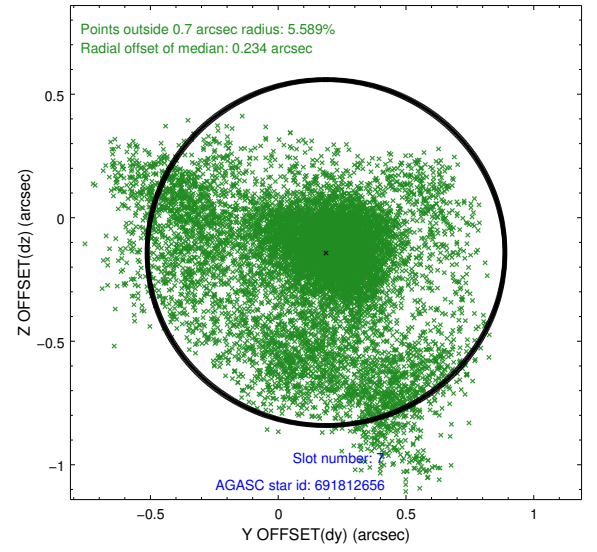
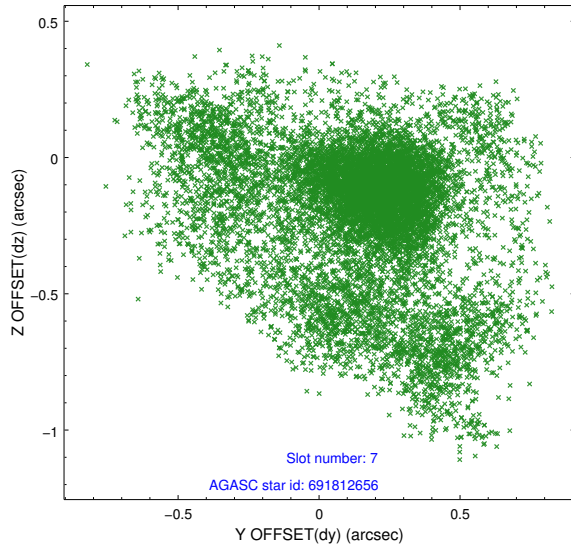
### 2.4.3 Slot 5



## 2.4.4 Slot 6

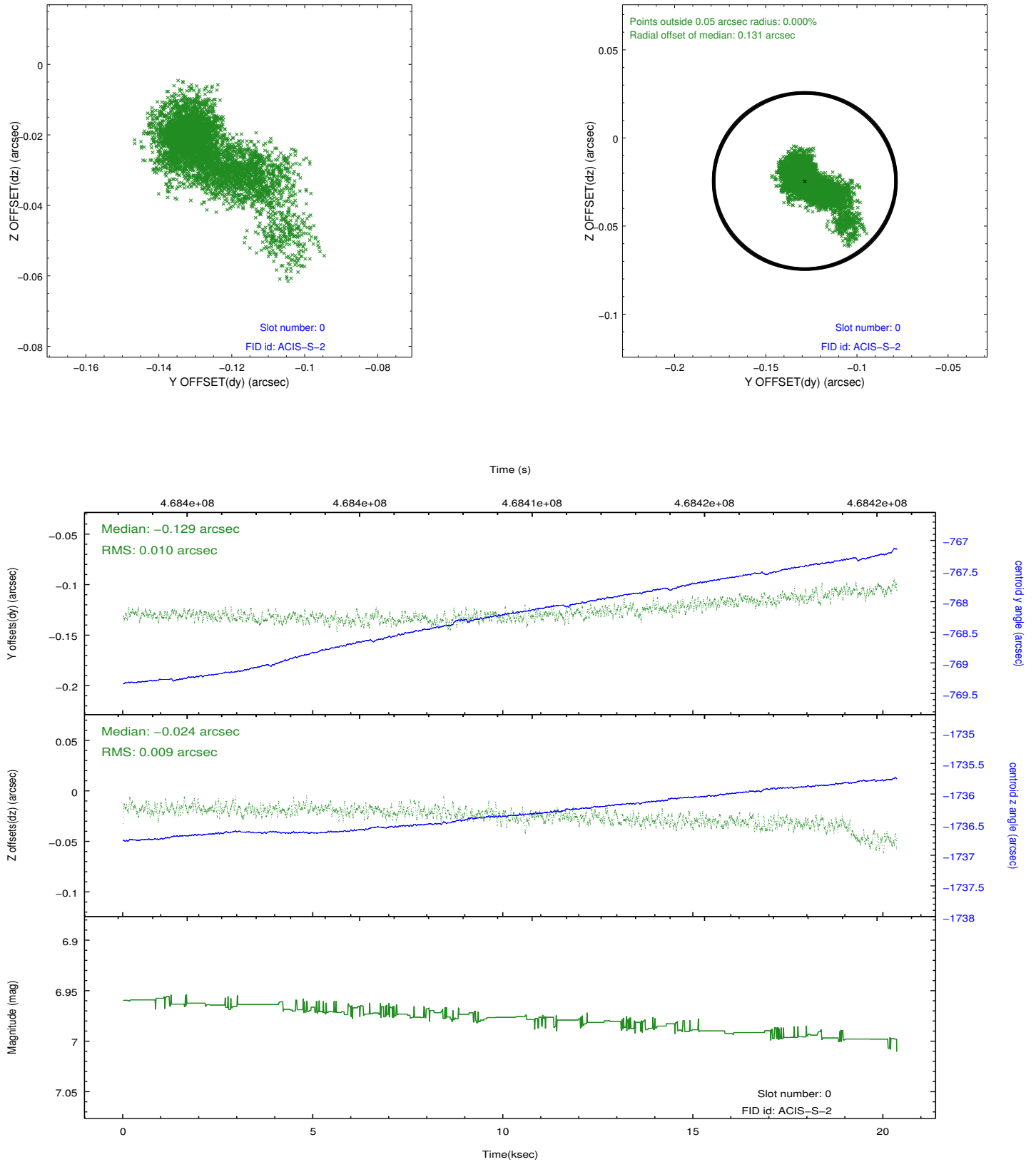


## 2.4.5 Slot 7

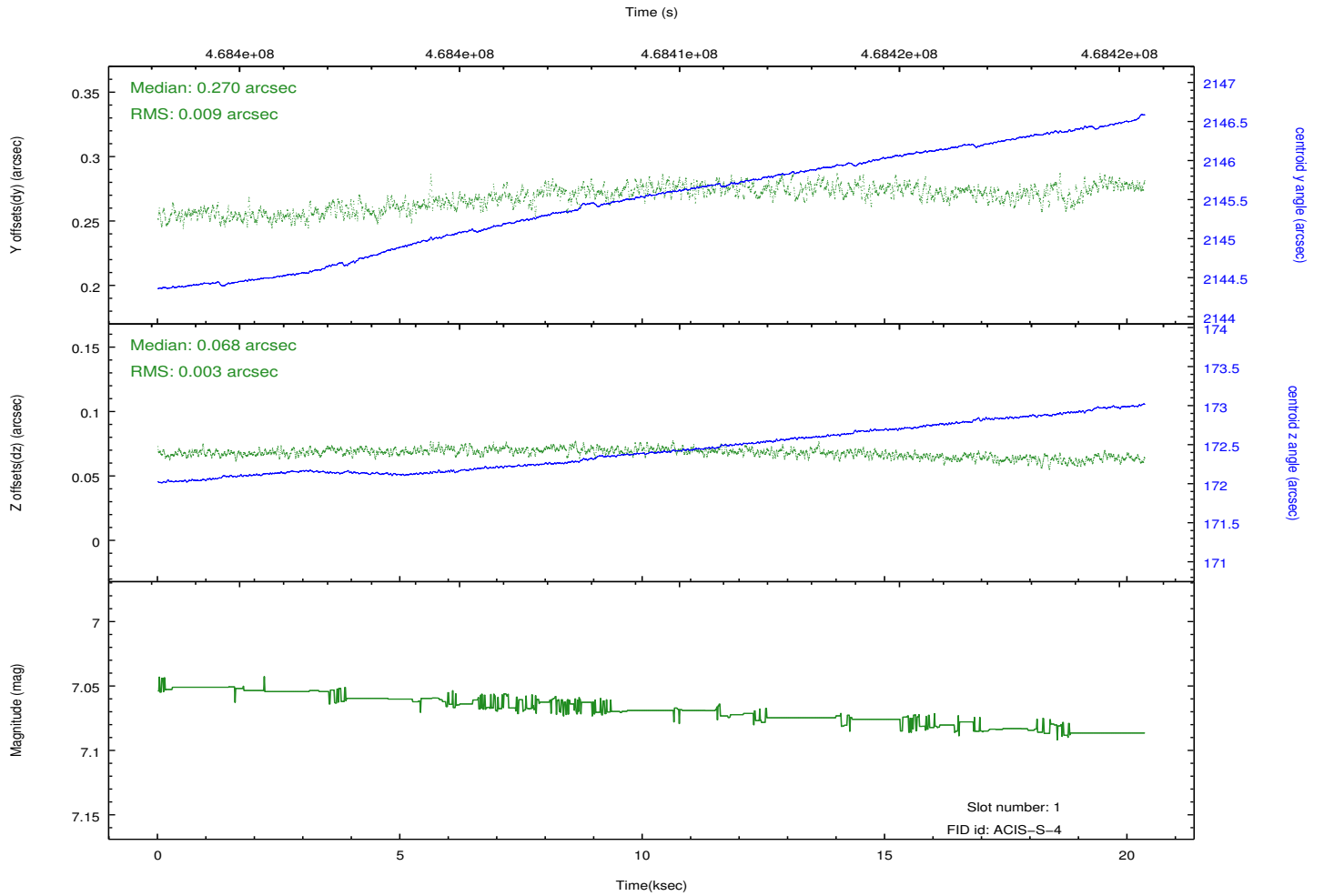
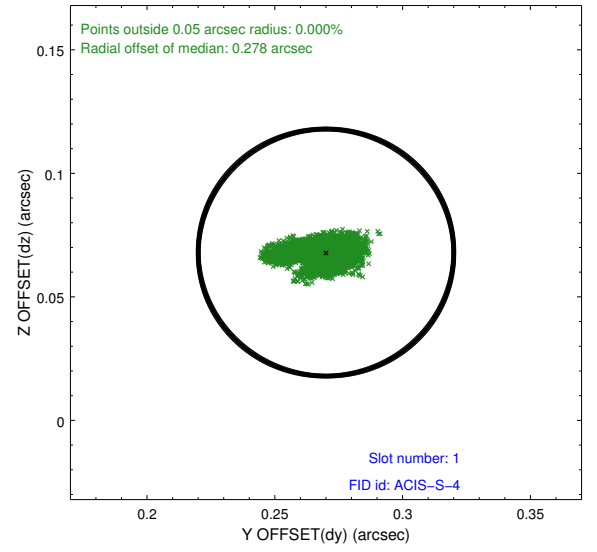
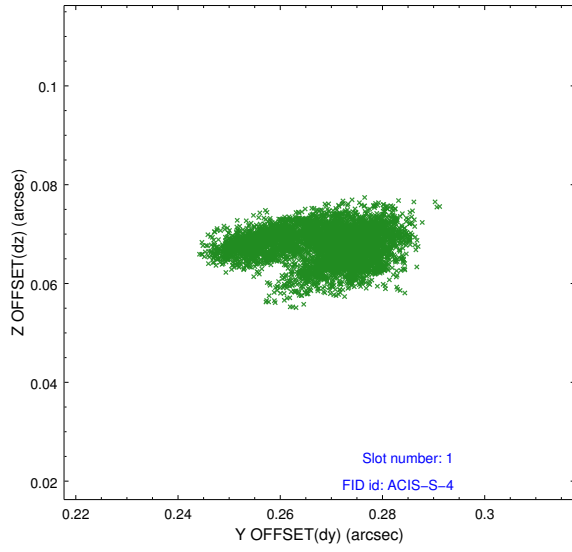


## 2.5 FID Slots

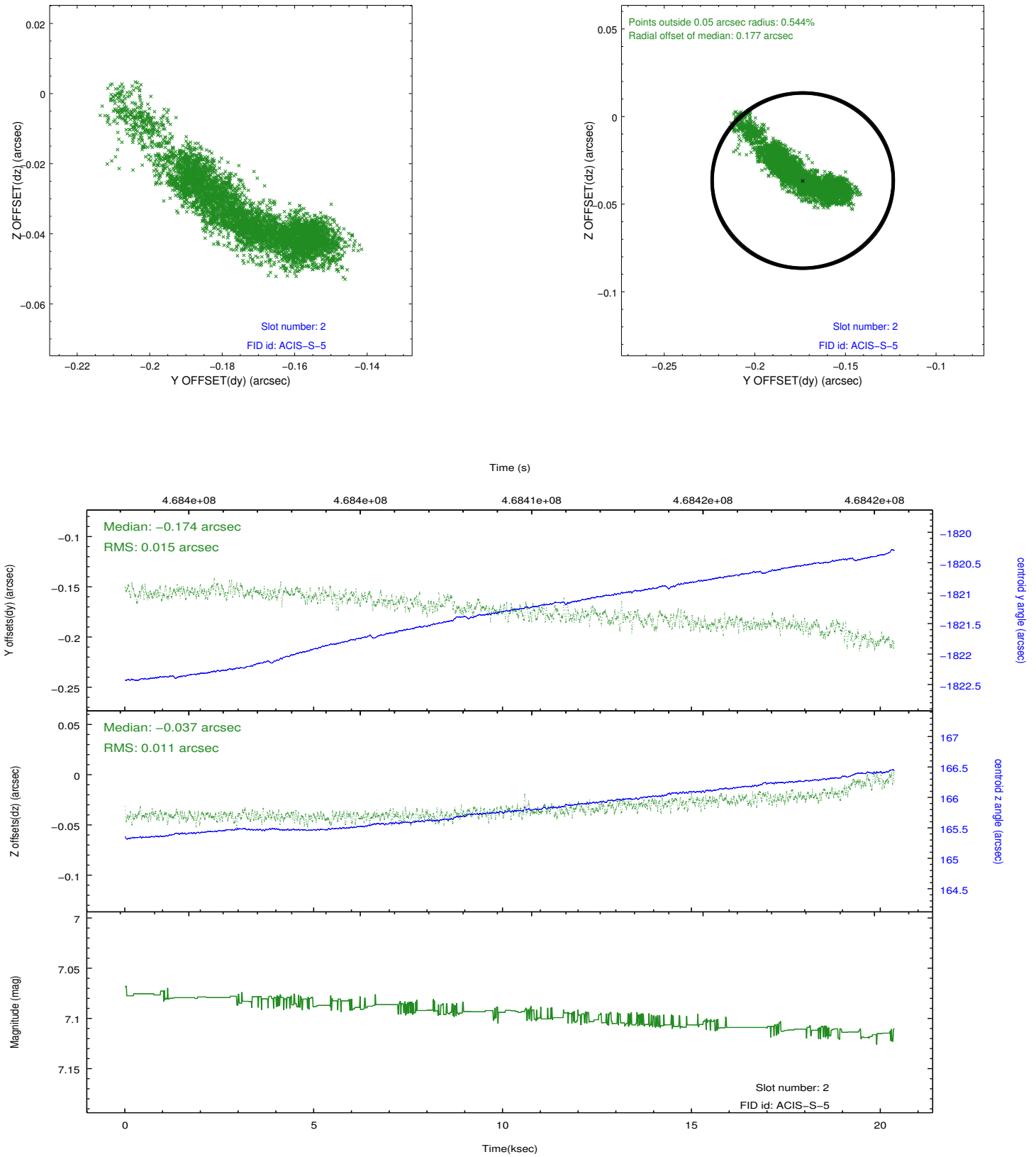
### 2.5.1 Slot 0



## 2.5.2 Slot 1



### 2.5.3 Slot 2



# A Summary

## A.1 Status

V&V Scientist	Jen Lauer
V&V Date (YYYY-MM-DD)	2014.12.03
V&V Edition	1
V&V Disposition and Status	OK
V&V Charge Time	20.057919460714

## A.2 Comments

These data have been reprocessed with new aspect alignment calibration files that correct small mean offsets (up to 0.4 arcsecs) and improve overall astrometric accuracy. The new calibration was determined using data from the time period being reprocessed and was performed using cross-correlation of X-ray sources with radio and optical counterparts.