

V&V Reference Report

L2 ASCDS Version : 8.5.1

Observation 15333 - L2 Version 2
Chandra X-Ray Center

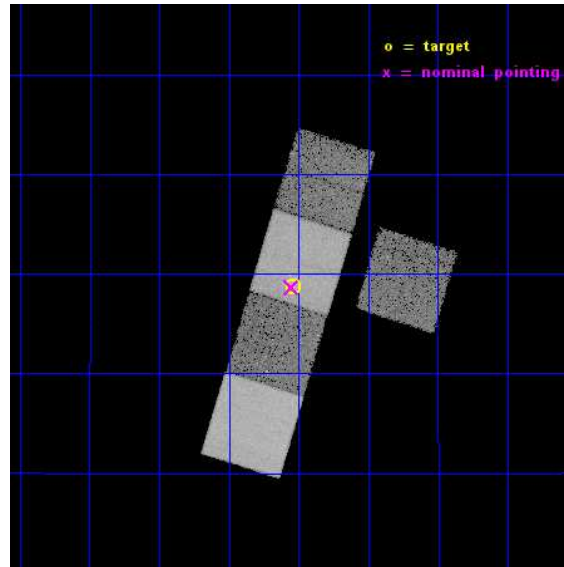
L2 Processing Date : Nov 30 2014

Contents

1	Front	2
2	OBI	3
2.1	OBI	3
2.1.1	Images	3
2.1.2	Bias	3
2.1.3	Parameters	4
2.1.4	Events	4
2.2	Compared Parameters	5
2.3	Aspect	6
2.4	Star Slots	9
2.4.1	Slot 3	9
2.4.2	Slot 4	10
2.4.3	Slot 5	11
2.4.4	Slot 6	12
2.4.5	Slot 7	13
2.5	FID Slots	14
2.5.1	Slot 0	14
2.5.2	Slot 1	15
2.5.3	Slot 2	16
A	Summary	17
A.1	Status	17
A.2	Comments	17

1 Front

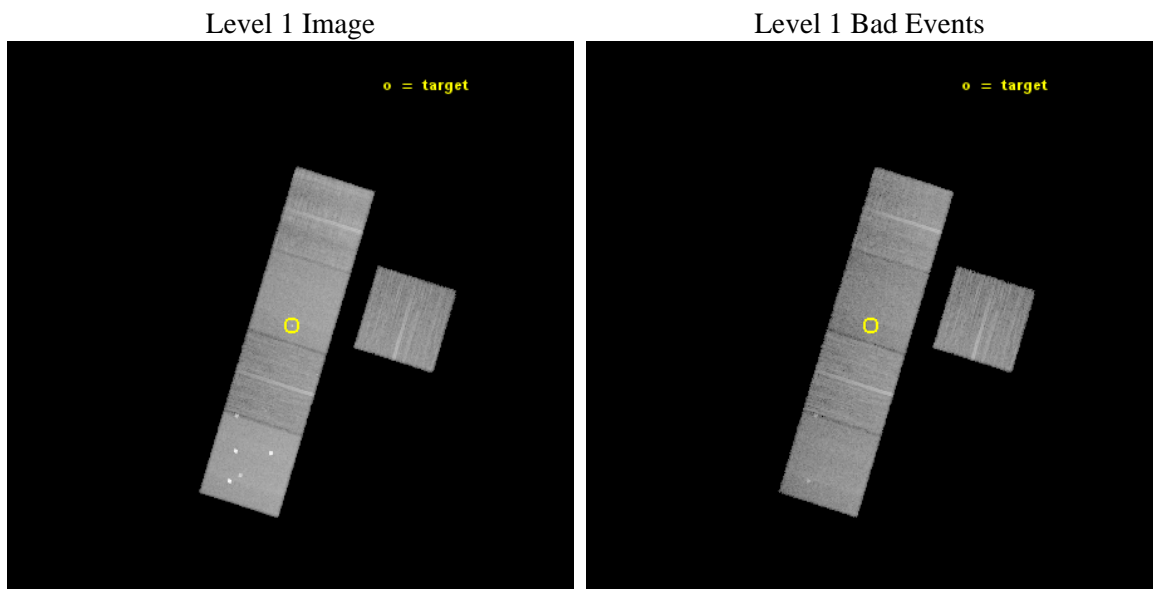
seq_num	702893	Sequence number
obs_id	15333	Observation id
title	NGC 660: a missing nearby Compton-thick AGN?	Proposal title
observer	Dr. Stephen Murray	Principal investigator
object	NGC 660	Source name
dtcycle	0	
cycle	P	events from which exps? Prim/Second/Both
ra_targ	25.76	Observer's specified target RA [deg]
dec_targ	13.645111	Observer's specified target Dec [deg]
ra_nom	25.763014947553	Nominal RA [deg]
dec_nom	13.644307040165	Nominal Dec [deg]
roll_nom	287.1559197403	Nominal Roll [deg]
revision	2	Processing version of data
ontime	23063.286656201	Sum of GTIs [s]
livetime	22761.947837093	Livetime [s]
ontime3	23060.022495806	Sum of GTIs [s]
ontime5	23063.245616198	Sum of GTIs [s]
ontime6	23060.063545823	Sum of GTIs [s]
ontime7	23063.286656201	Sum of GTIs [s]
ontime8	23059.981445789	Sum of GTIs [s]
l2events	202779	Number of level 2 events



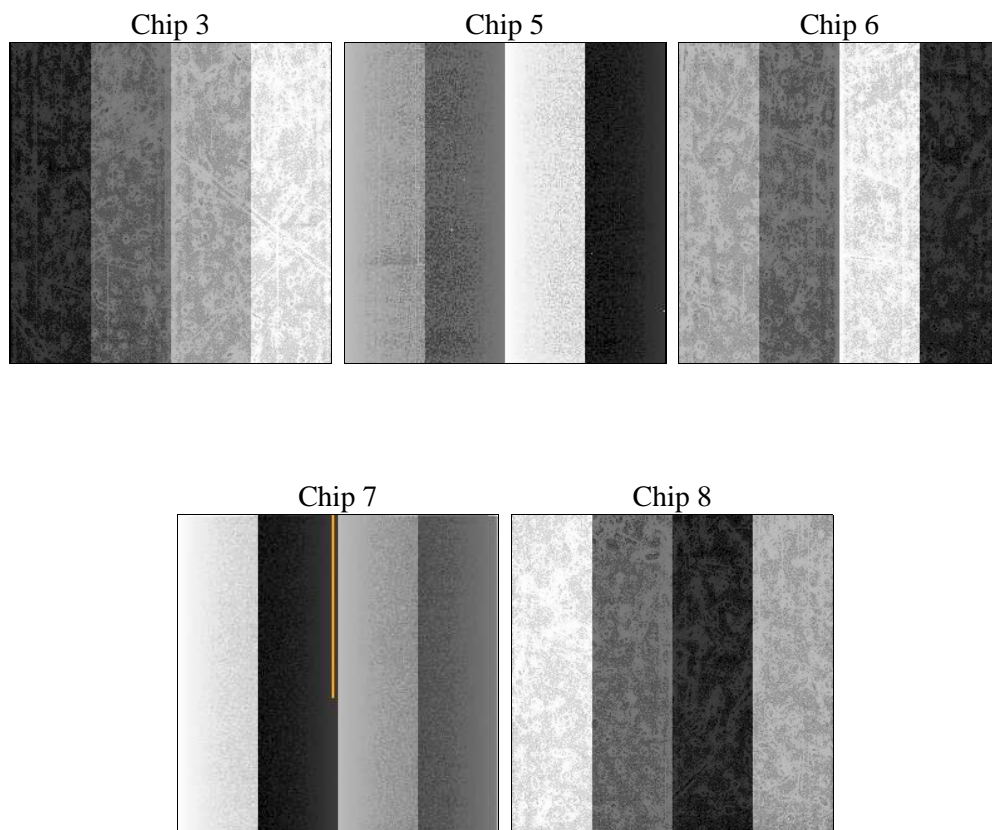
2 OBI

2.1 OBI

2.1.1 Images



2.1.2 Bias



2.1.3 Parameters

obi_num	1	Obi number	sched_exp_time	23000.000000	[s] Scheduled observation exposure time
ascdsver	10.3	Processing system revision	ontime	23063.286656201	Sum of GTIs [s]
caldsver	4.6.4	 	ontime3	23060.022495806	Sum of GTIs [s]
date	2014-11-30T07:37:14	Date and time of file creation	ontime5	23063.245616198	Sum of GTIs [s]
revision	2	Processing version of data	ontime6	23060.063545823	Sum of GTIs [s]
			ontime7	23063.286656201	Sum of GTIs [s]
			ontime8	23059.981445789	Sum of GTIs [s]
			l1events	795636	Number of level 1 events

2.1.4 Events

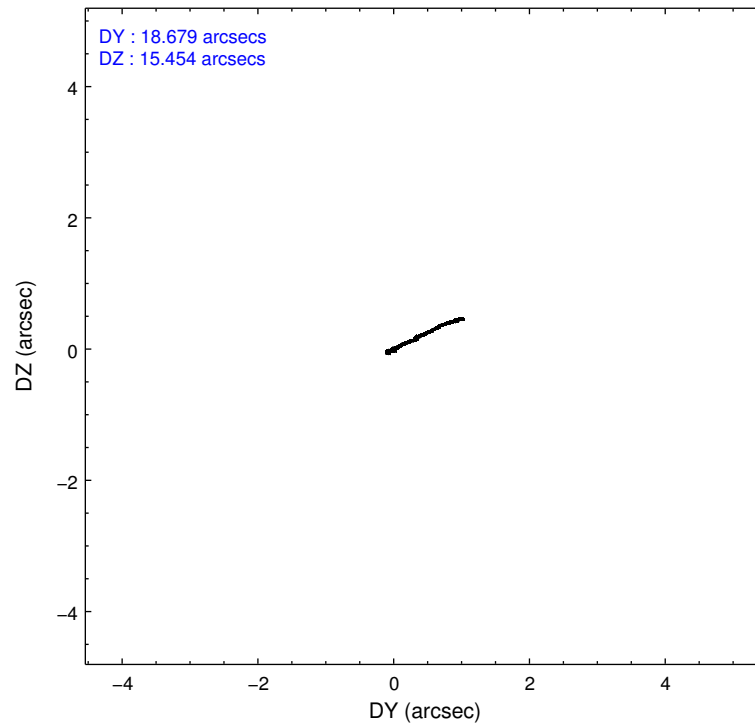
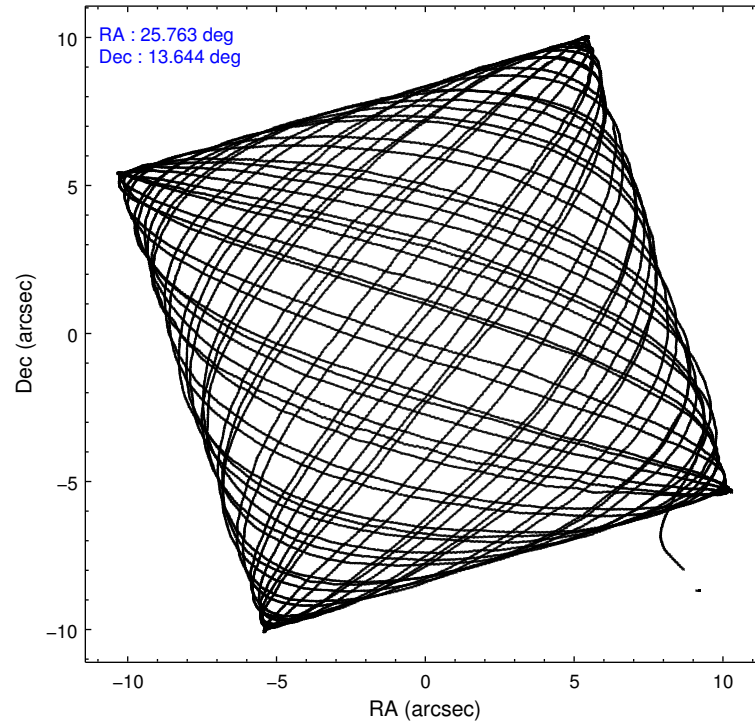
	ccd 3	ccd 5	ccd 6	ccd 7	ccd 8
level 1 events	119187	224393	125448	166585	160023
rejected events	105484	107599	110324	93566	118124
rejected %	88%	47%	87%	56%	73%

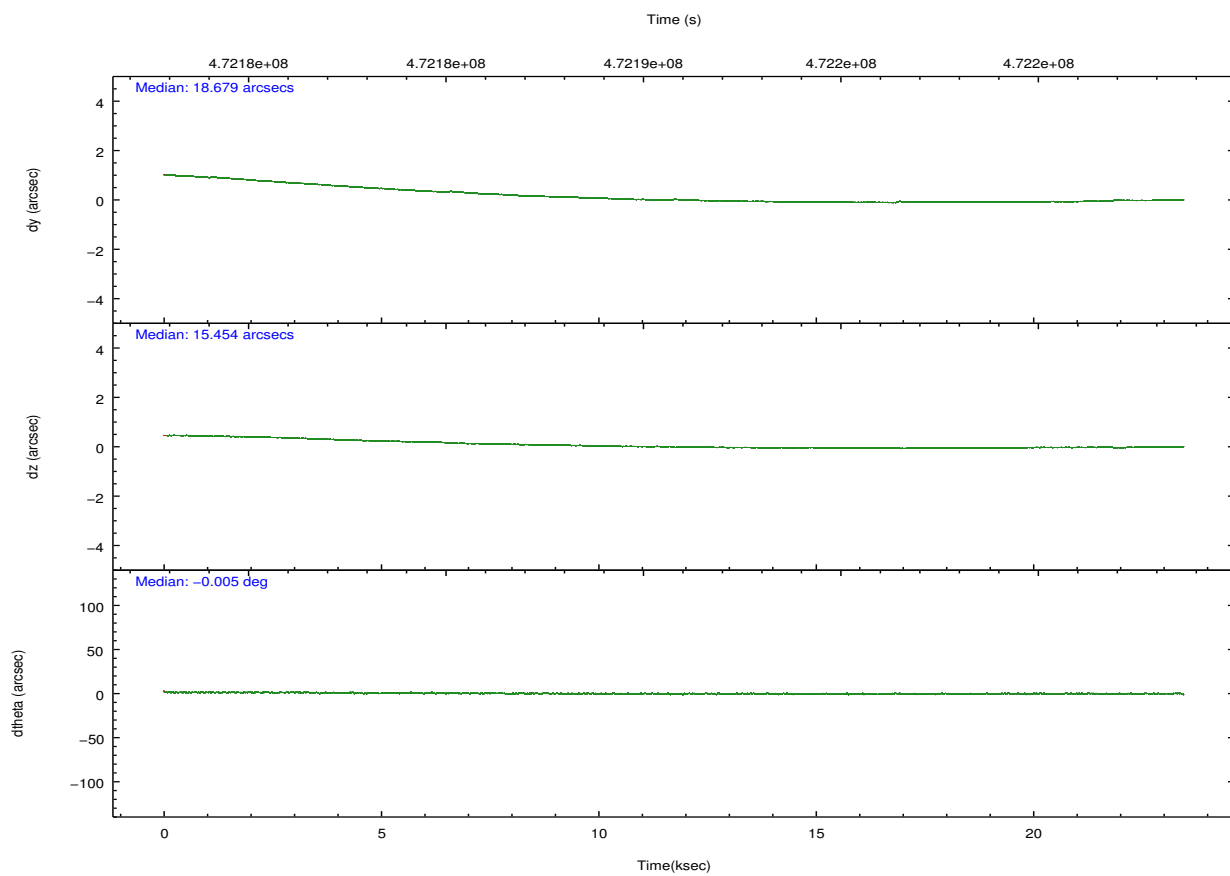
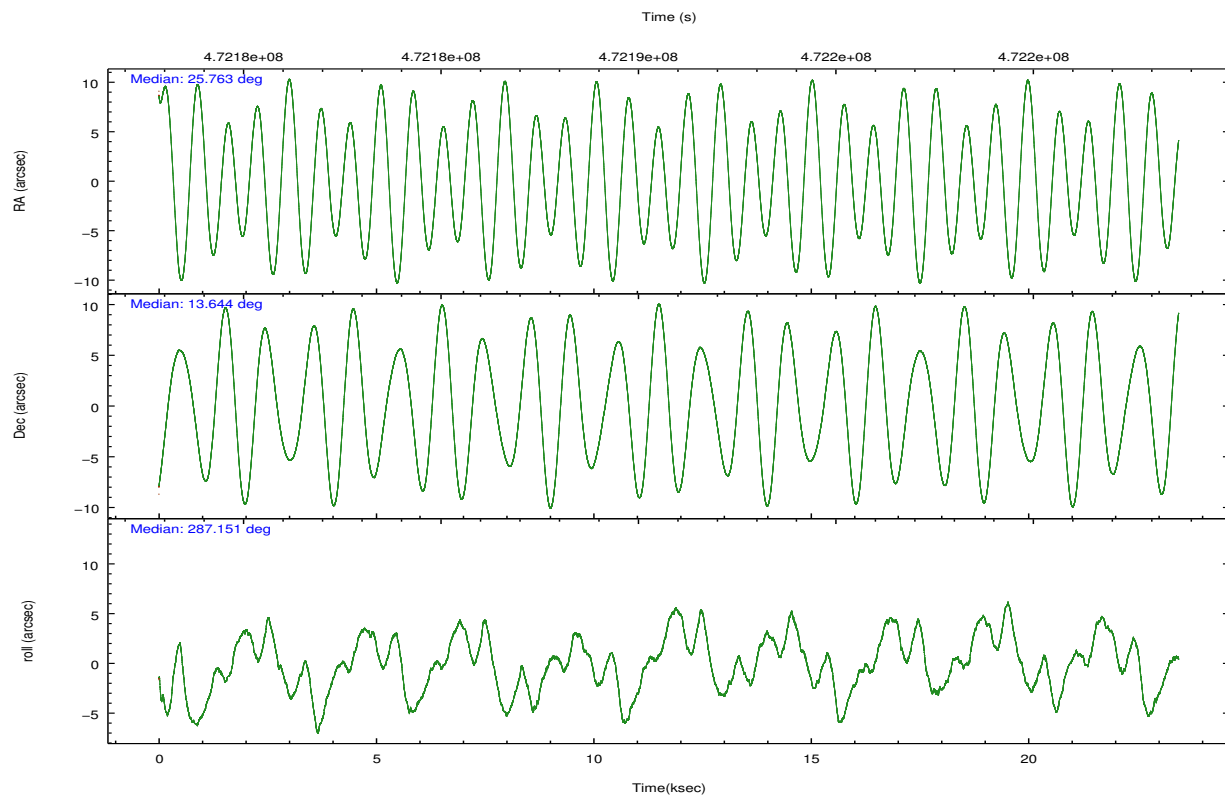
	ccd 3	ccd 5	ccd 6	ccd 7	ccd 8
grade 0 events	4692	21218	5173	6558	11374
	3%	9%	4%	3%	7%
grade 1 events	69	680	68	184	115
	0%	0%	0%	0%	0%
grade 2 events	3099	35927	3413	14942	10236
	2%	16%	2%	8%	6%
grade 3 events	1492	3304	1532	6237	4635
	1%	1%	1%	3%	2%
grade 4 events	1489	3122	1585	6103	4410
	1%	1%	1%	3%	2%
grade 5 events	6285	15027	6481	17176	9164
	5%	6%	5%	10%	5%
grade 6 events	2933	53236	3424	39185	11245
	2%	23%	2%	23%	7%
grade 7 events	99128	91879	103772	76200	108844
	83%	40%	82%	45%	68%

2.2 Compared Parameters

Parameter	Planned	Actual	Parameter	Planned	Actual
Instrument	ACIS	ACIS	Obspar format version number	7	7
Detector	ACIS-35678	ACIS-35678	Obspar file type	PREDICTED	ACTUAL
Grating	NONE	NONE	Obspar update status	NONE	UPDATED
Data mode	VFAINT	VFAINT	Number of optional ACIS chips dropped	0	0
Observation mode	POINTING	POINTING	On-chip summing requested	N	N
[deg] Pointing RA	25.742117	25.76301494755284	Subarray requested	NONE	NONE
[deg] Pointing Dec	13.662631	13.64430704016453	Alternating exposures requested	N	N
[deg] Pointing Roll	287.004228	287.1559197402971	[s] Primary exposure time	0.000000	3.1
[mm] SIM focus pos	-0.684267	-0.6828225247311905			
[mm] SIM defocus	0	0.001444936568705701			
[mm] SIM translation stage pos	-190.132523	-190.1425803651734			
[mm] SIM translation stage offset	0	0.01005778216563158			
[s] Observation start time (MET)	472179489.184000	472178417.95126			
Observation start date	2012-12-18T00:57:02	2012-12-18T00:40:17			
[s] Observation end time (MET)	472202489.184000	472203357.74011			
Observation end date	2012-12-18T07:20:22	2012-12-18T07:35:57			
Read mode	TIMED	TIMED			

2.3 Aspect



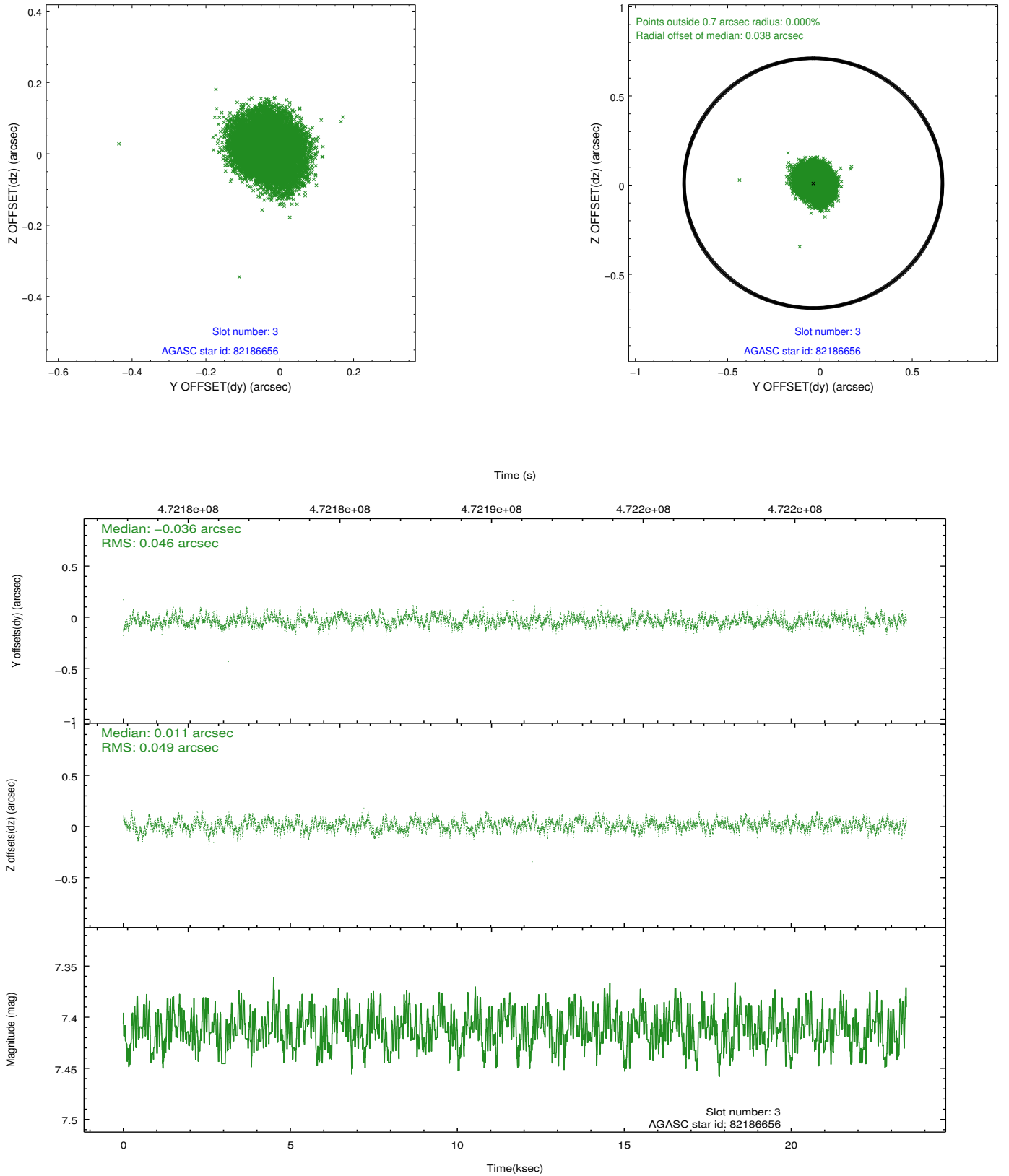


Slot Statistics

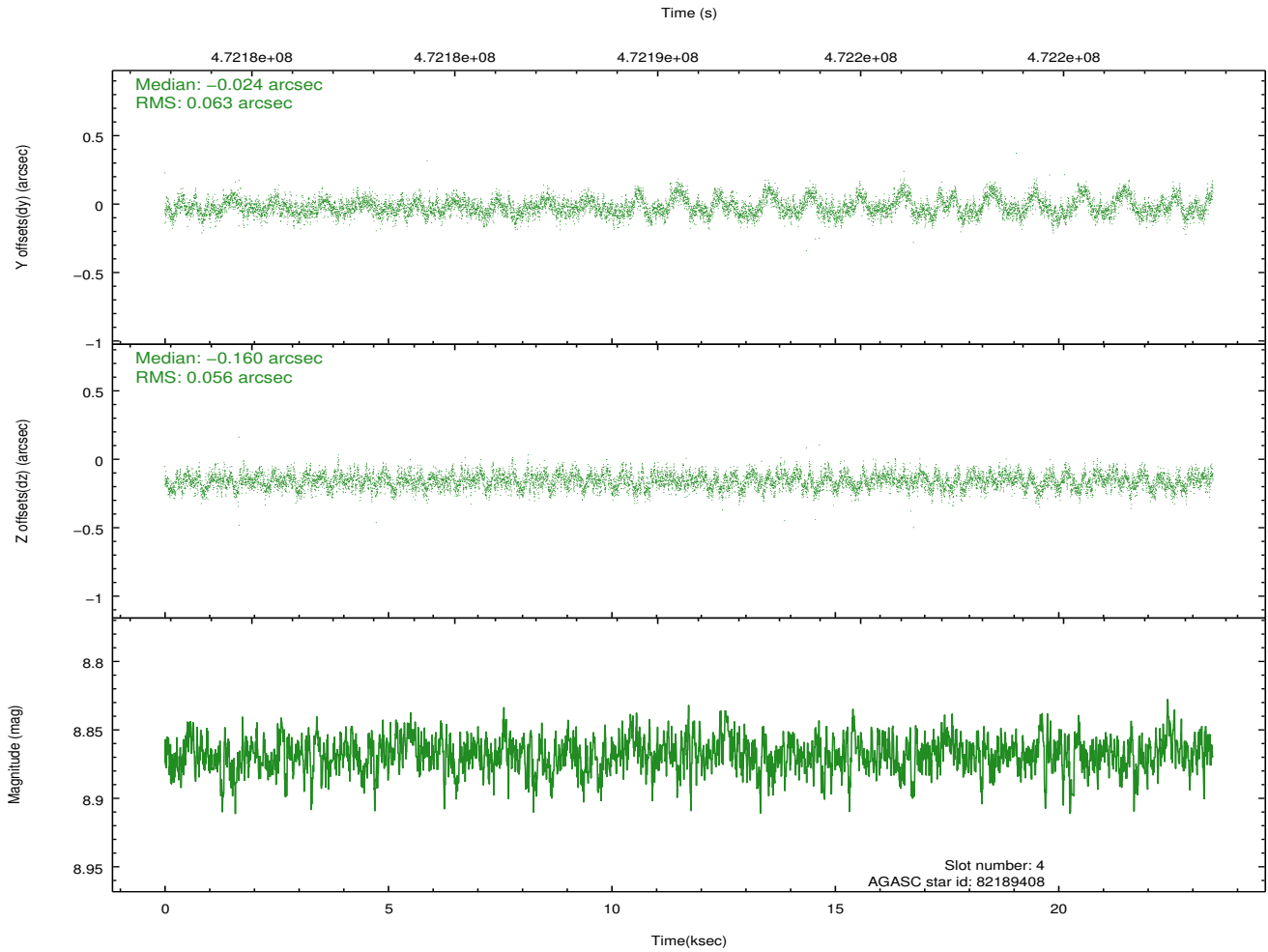
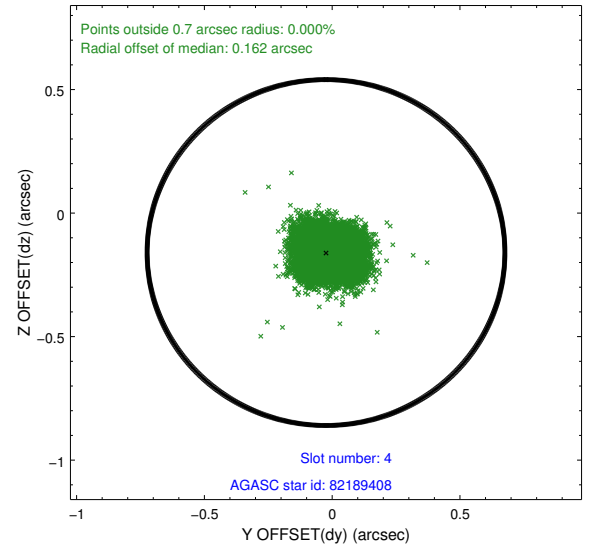
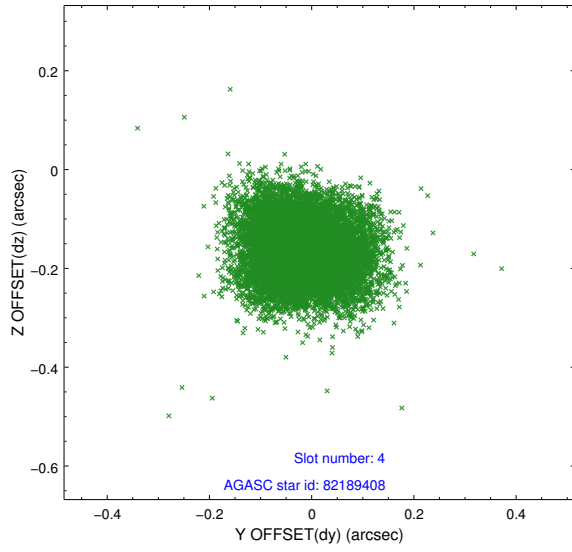
slot	status	used	id	mag	n_pts	med_dy	med_dz	dr1	dr2	ra	dec	mean_y	mean_z
0	FID		ACIS-S-2	7.03	5721	-0.134	-0.012	0.010	0.017	0.000000	0.000000	-772.05	-1736.90
1	FID		ACIS-S-4	7.11	5721	0.314	0.068	0.008	0.014	0.000000	0.000000	2141.59	171.54
2	FID		ACIS-S-5	7.14	5720	-0.210	-0.048	0.008	0.014	0.000000	0.000000	-1824.81	165.22
3	GUIDE	used	82186656	7.41	11441	-0.036	0.011	0.072	0.114	25.268579	13.773450	-865.77	-1465.91
4	GUIDE	used	82189408	8.87	11434	-0.024	-0.160	0.089	0.146	25.276758	13.237916	984.16	-2006.22
5	GUIDE	used	82319672	9.05	11428	0.115	0.172	0.107	0.171	25.615508	13.734038	-374.31	-348.05
6	GUIDE	used	82320496	8.44	11439	-0.201	0.014	0.073	0.115	26.104669	14.056528	-986.31	1625.44
7	GUIDE	used	82315088	9.21	11396	0.147	-0.036	0.120	0.191	25.823162	12.979305	2435.94	-447.04

2.4 Star Slots

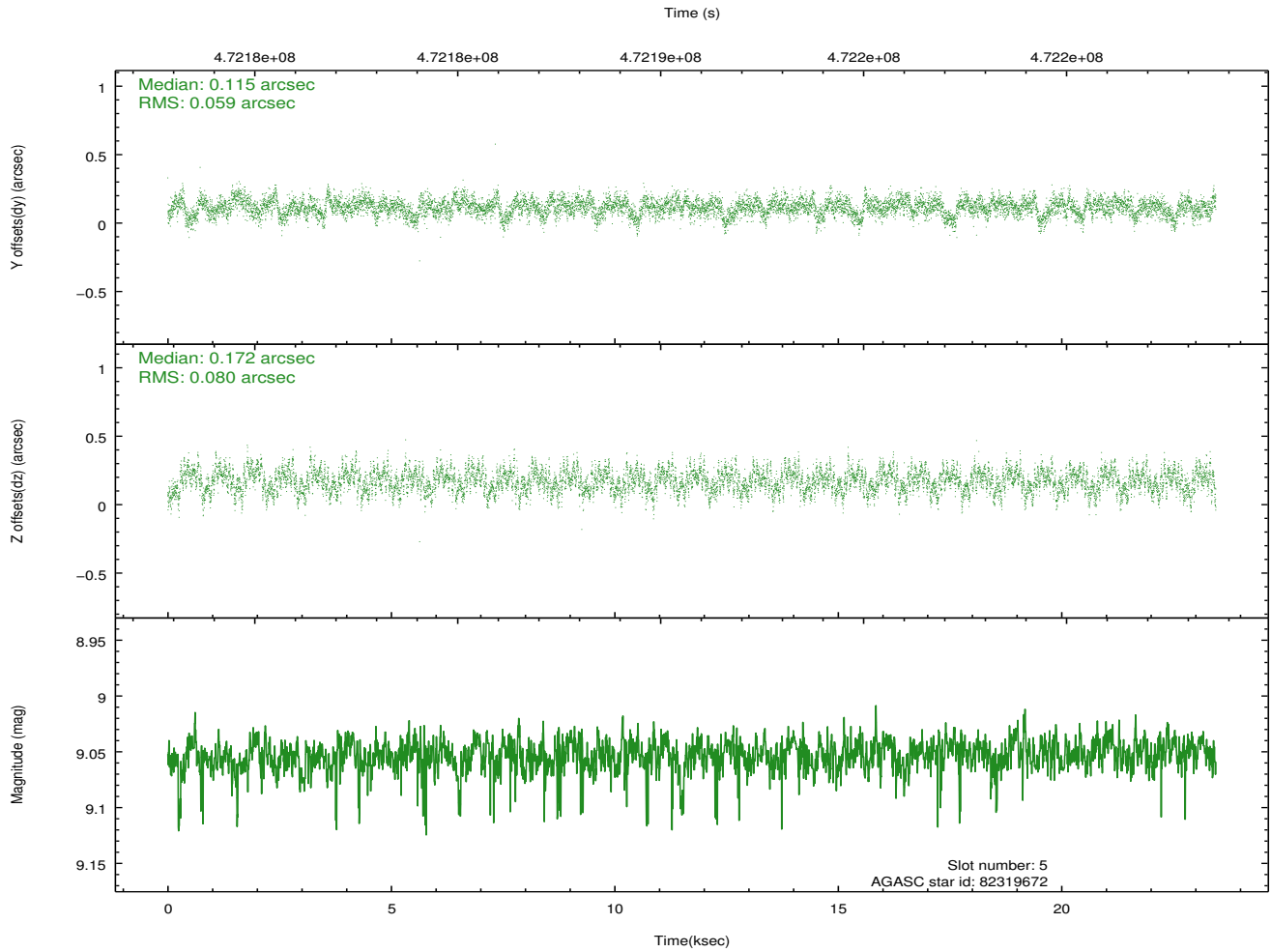
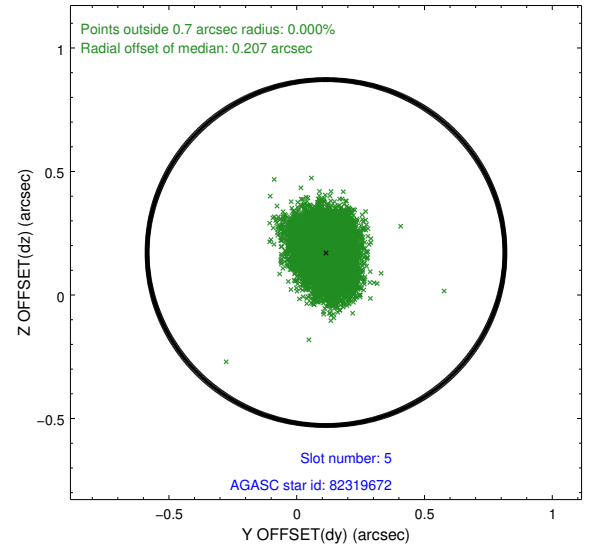
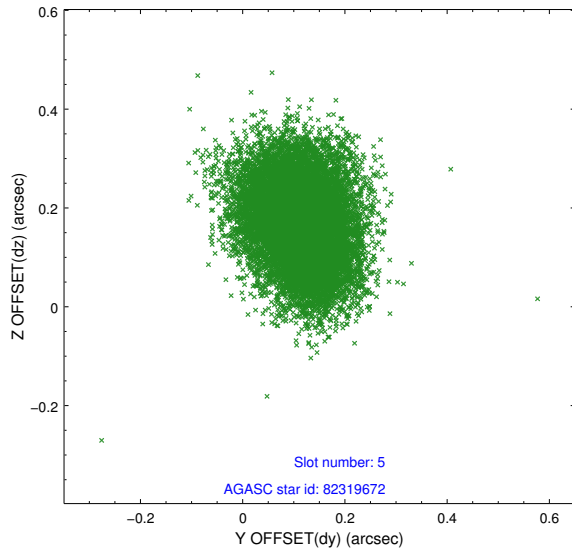
2.4.1 Slot 3



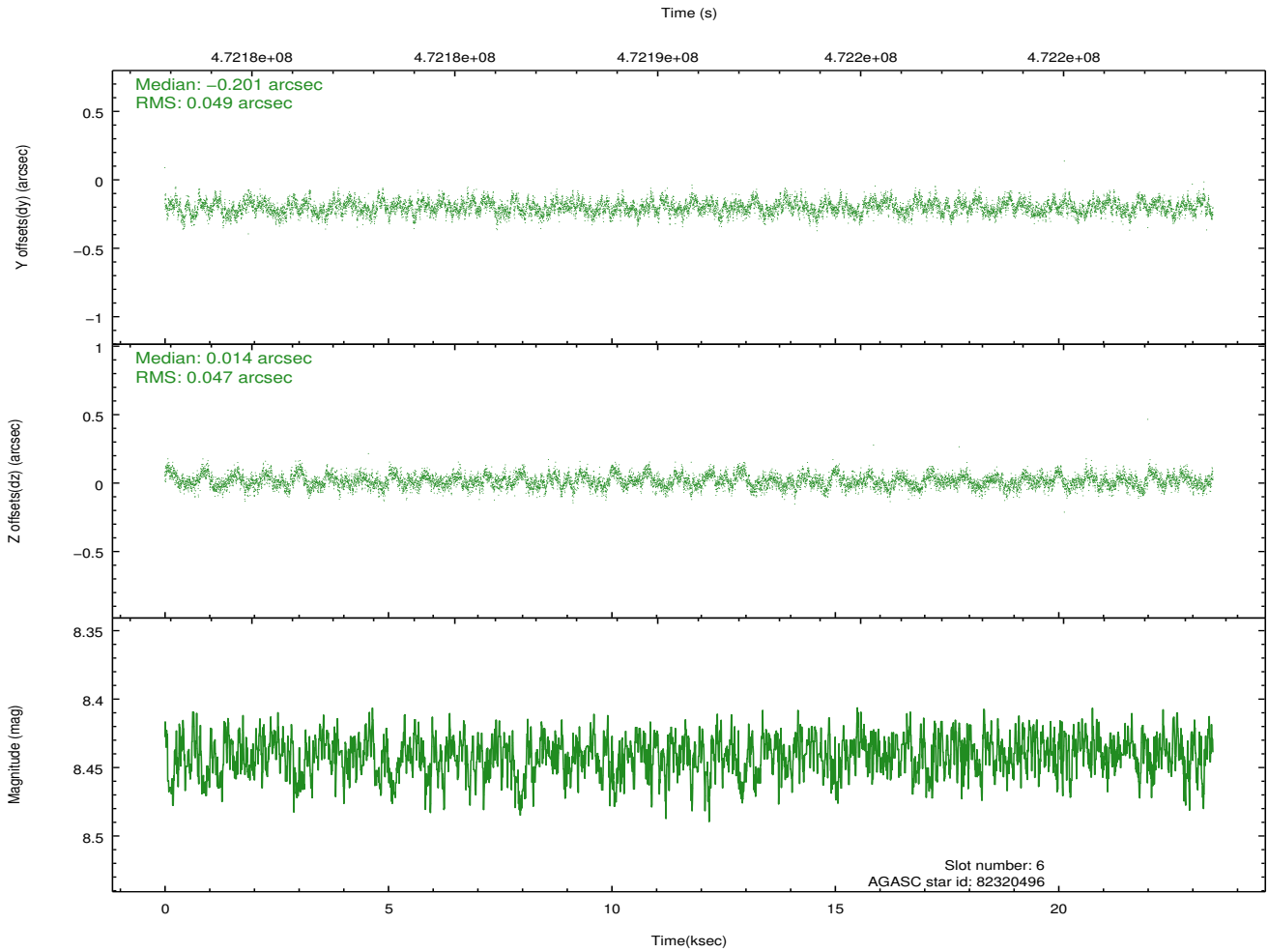
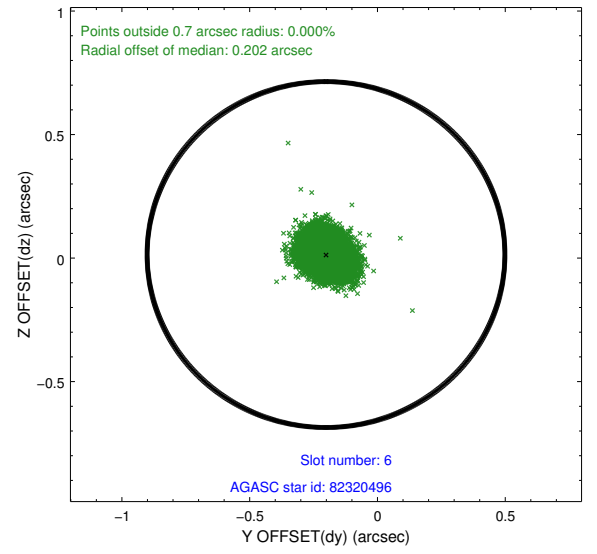
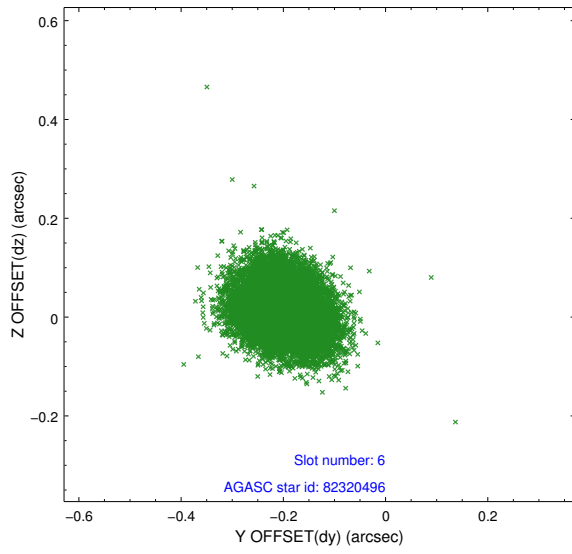
2.4.2 Slot 4



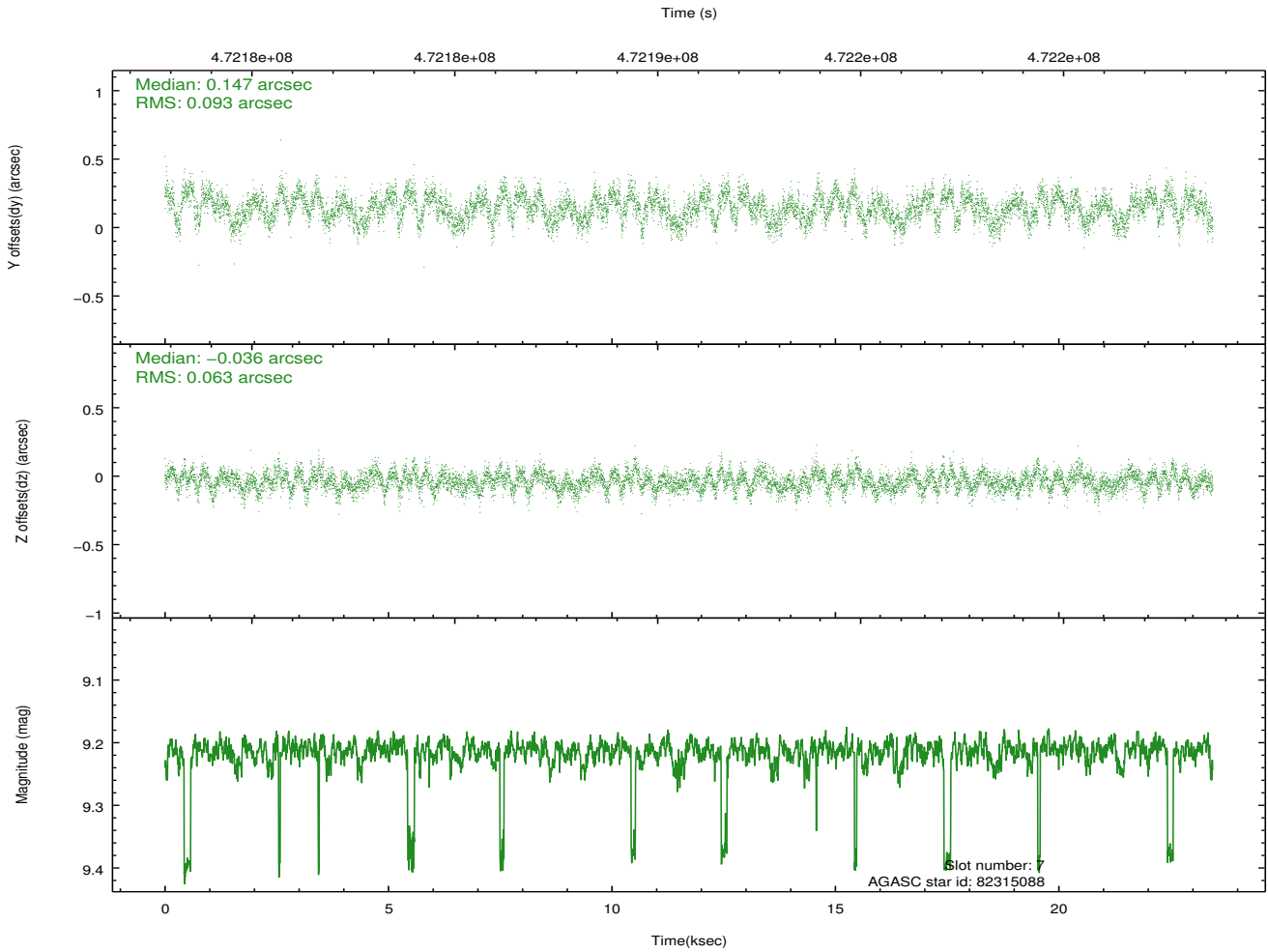
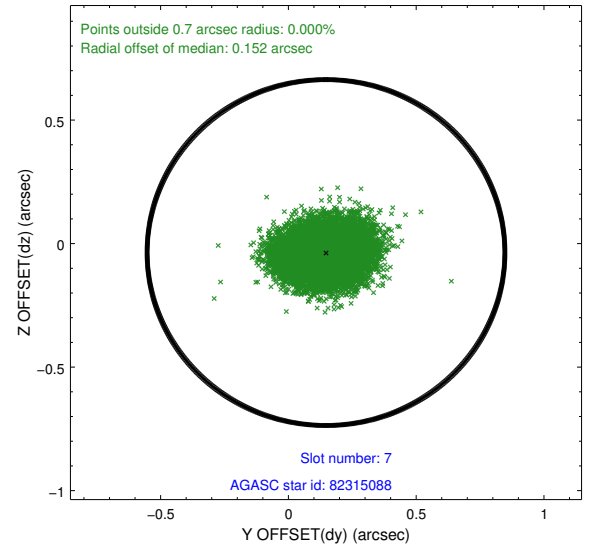
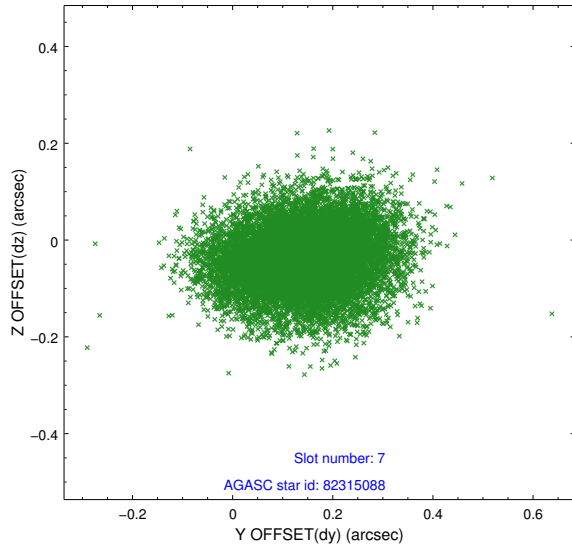
2.4.3 Slot 5



2.4.4 Slot 6

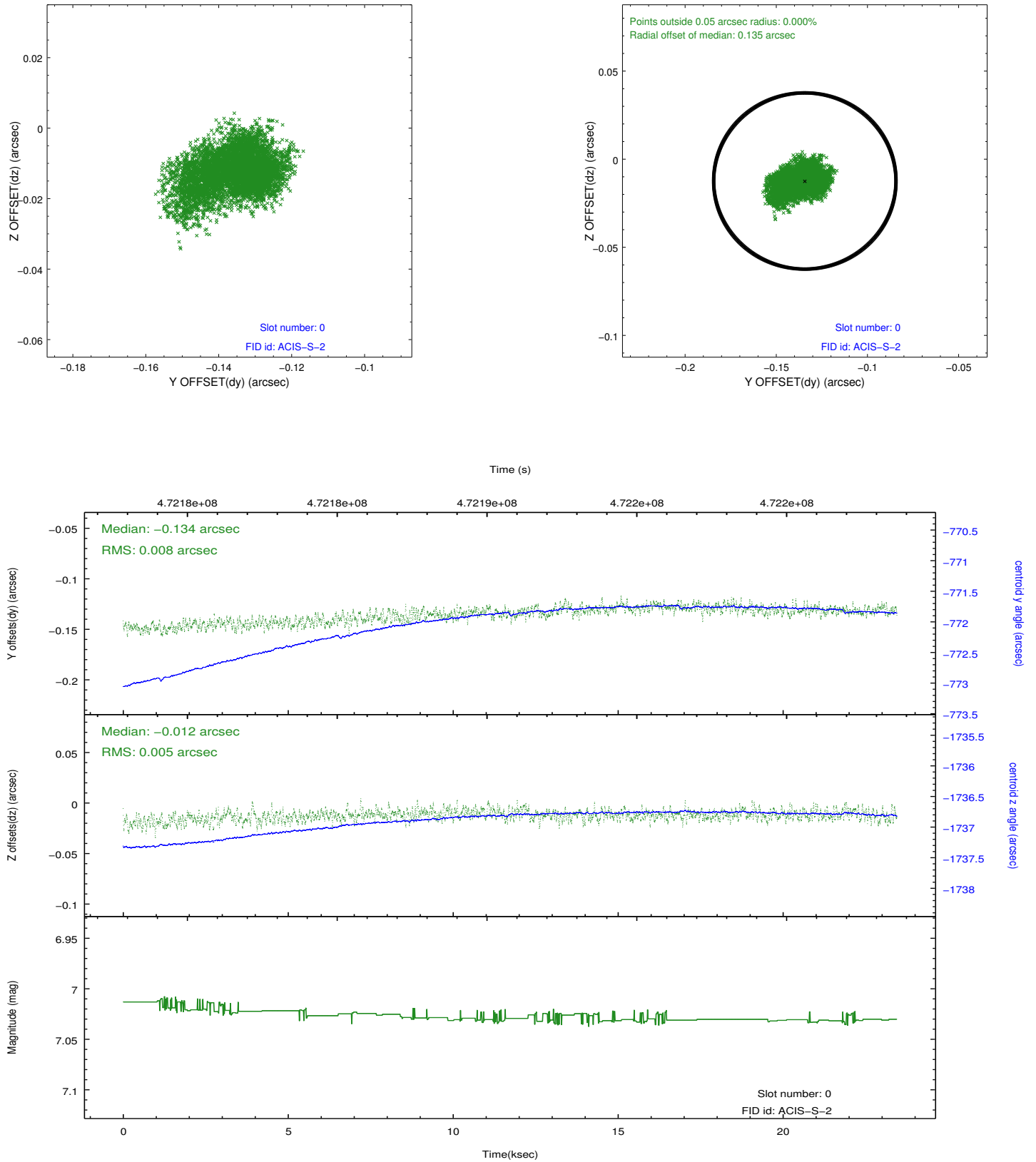


2.4.5 Slot 7

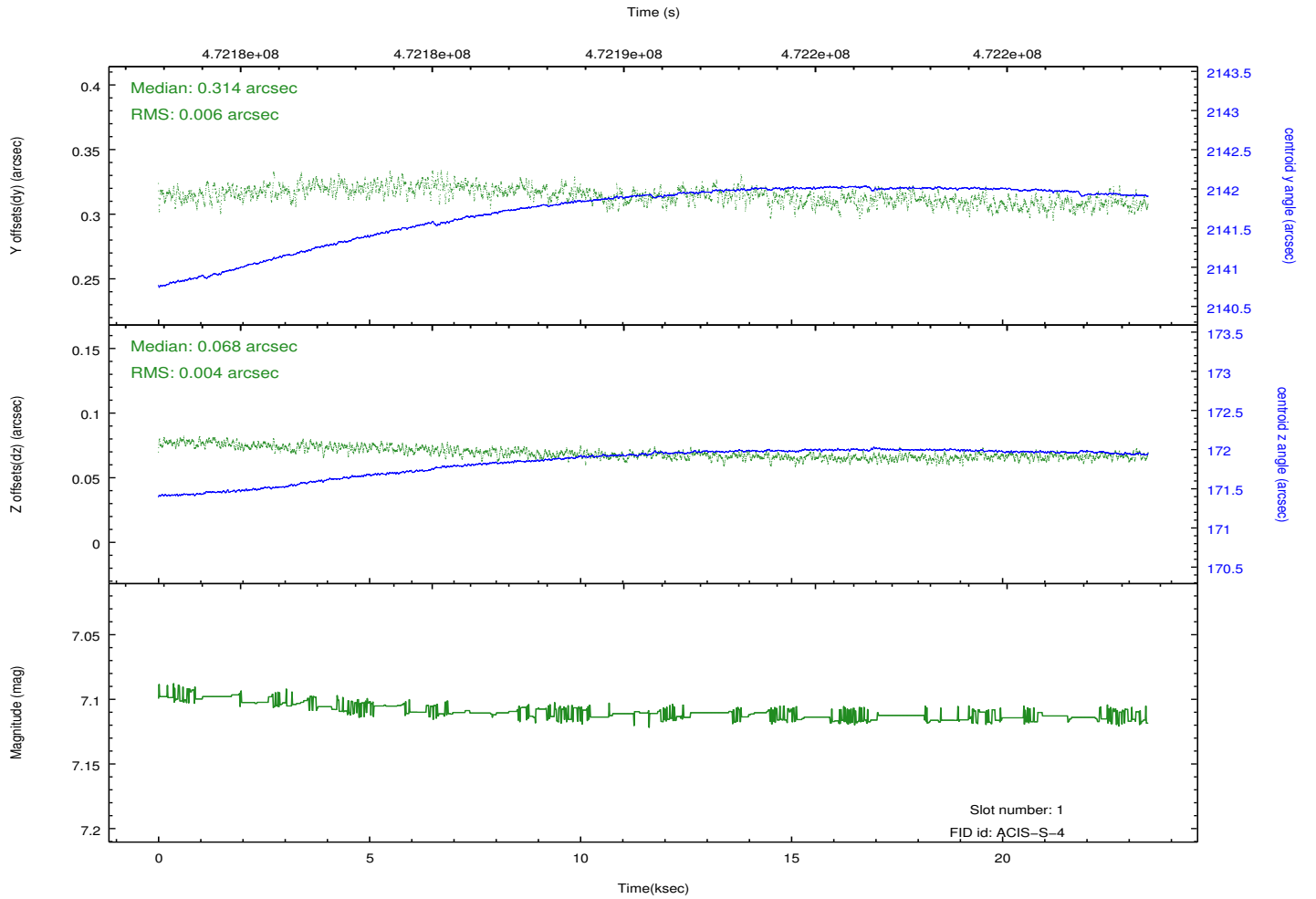
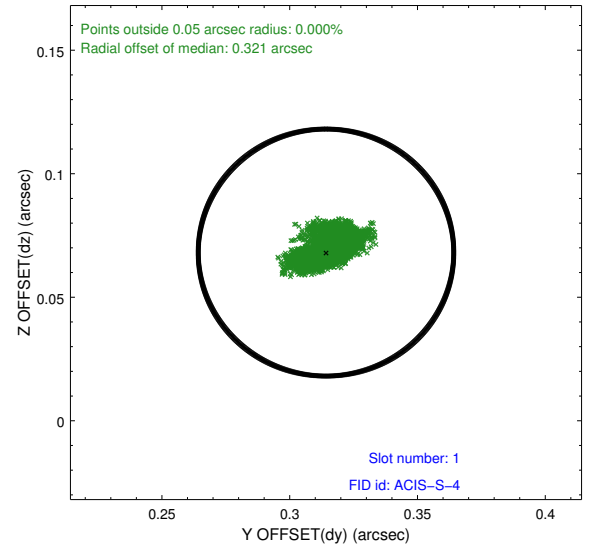
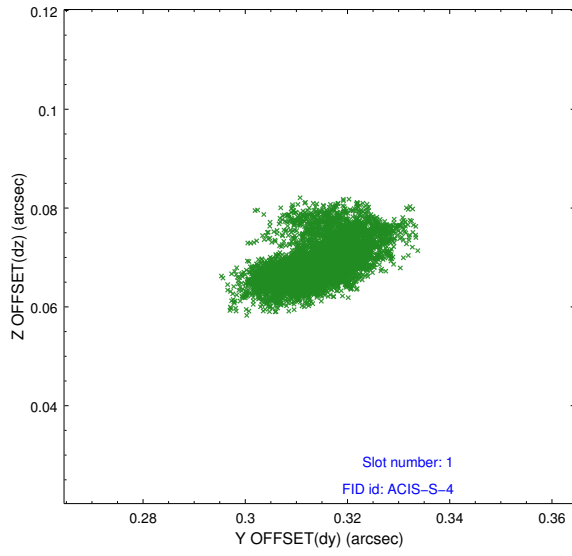


2.5 FID Slots

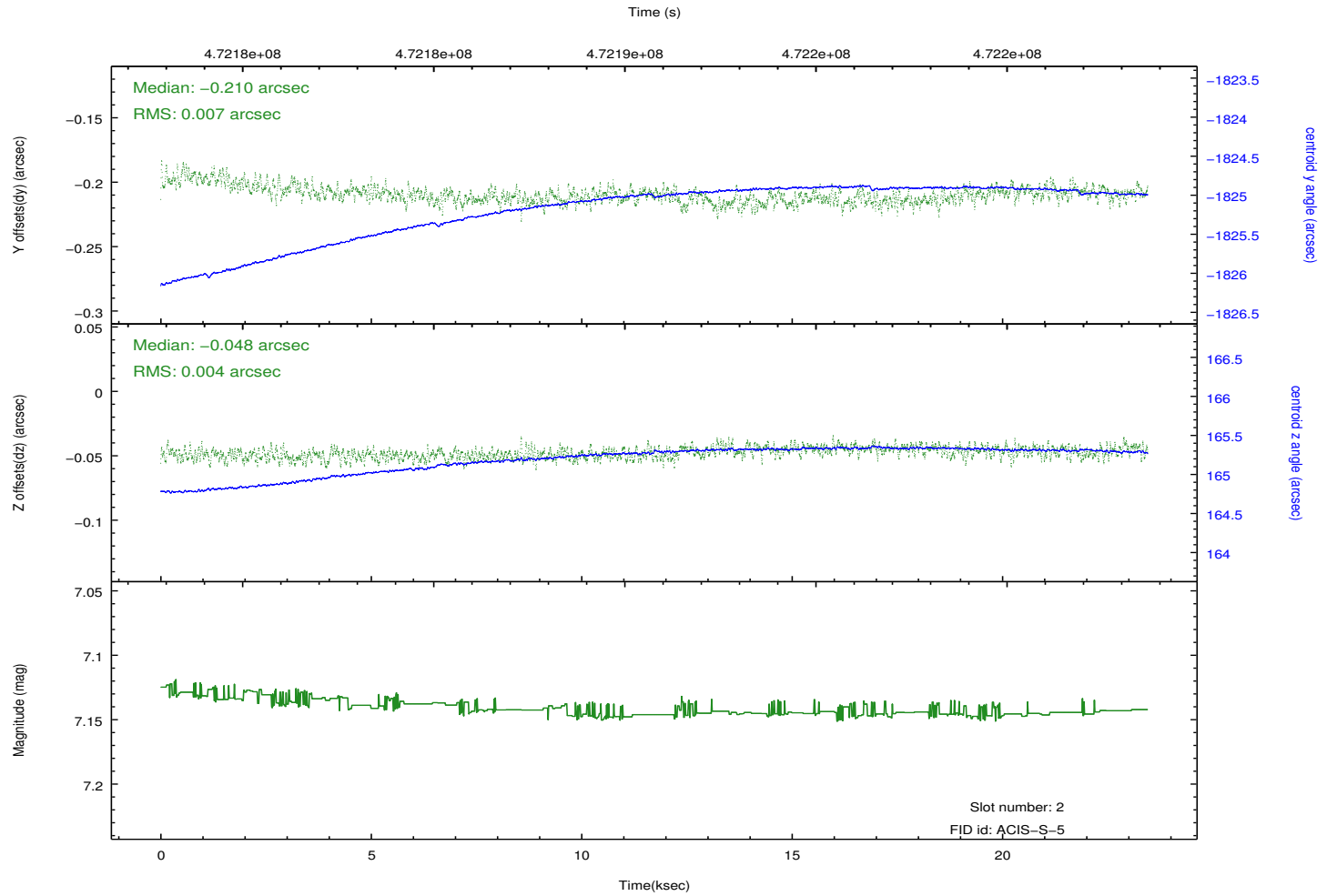
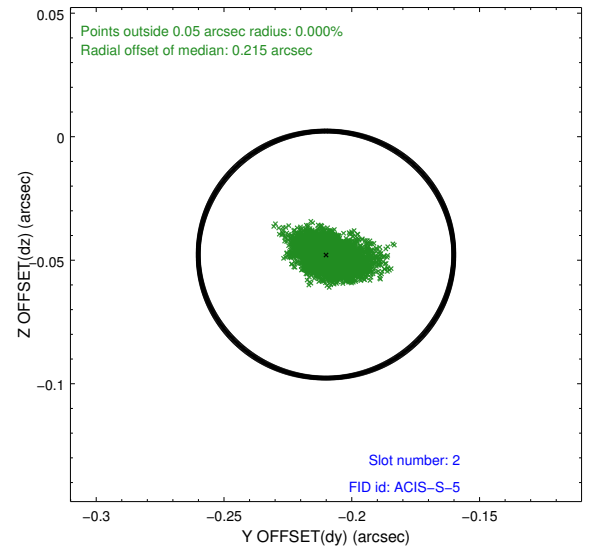
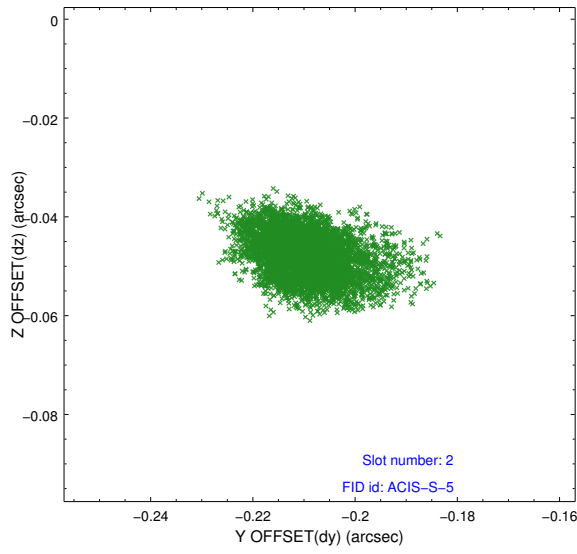
2.5.1 Slot 0



2.5.2 Slot 1



2.5.3 Slot 2



A Summary

A.1 Status

V&V Scientist	Jen Lauer
V&V Date (YYYY-MM-DD)	2014.12.04
V&V Edition	1
V&V Disposition and Status	OK
V&V Charge Time	23.063286656201

A.2 Comments

These data have been reprocessed with new aspect alignment calibration files that correct small mean offsets (up to 0.4 arcsecs) and improve overall astrometric accuracy. The new calibration was determined using data from the time period being reprocessed and was performed using cross-correlation of X-ray sources with radio and optical counterparts.