

V&V Reference Report

L2 ASCDS Version : 8.4.5

Observation 15068 - L2 Version 2
Chandra X-Ray Center

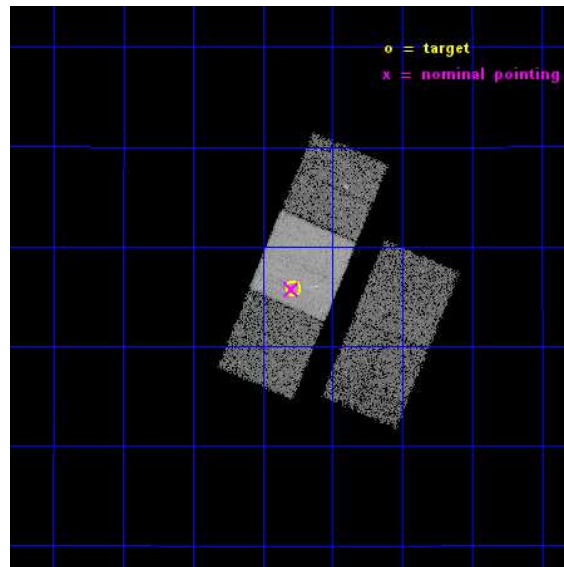
L2 Processing Date : Nov 30 2014

Contents

1	Front	2
2	OBI	3
2.1	OBI	3
2.1.1	Images	3
2.1.2	Bias	3
2.1.3	Parameters	4
2.1.4	Events	4
2.2	Compared Parameters	5
2.3	Aspect	6
2.4	Star Slots	9
2.4.1	Slot 3	9
2.4.2	Slot 4	10
2.4.3	Slot 5	11
2.4.4	Slot 6	12
2.4.5	Slot 7	13
2.5	FID Slots	14
2.5.1	Slot 0	14
2.5.2	Slot 1	15
2.5.3	Slot 2	16
A	Summary	17
A.1	Status	17
A.2	Comments	17

1 Front

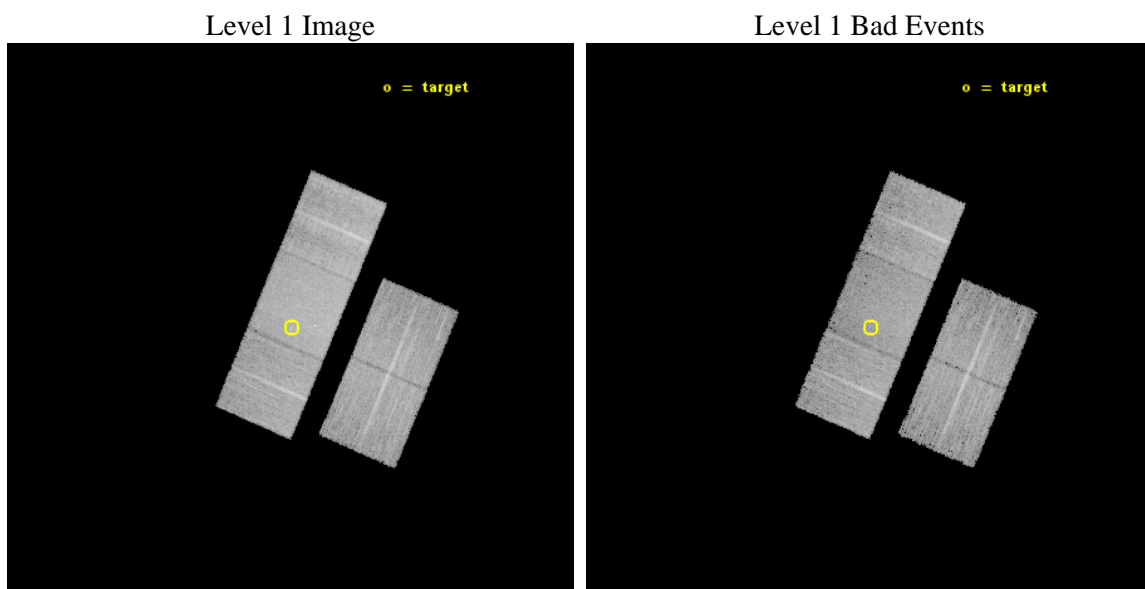
seq_num	702875	Sequence number
obs_id	15068	Observation id
title	C-GOALS: The Chandra-RBGS Survey of a Complete Sample of Major-Merger LIRGs	Proposal title
observer	Professor David Sanders	Principal investigator
object	UGC 02238	Source name
dtcycle	0	
cycle	P	events from which exps? Prim/Second/Both
ra_targ	41.570833	Observer's specified target RA [deg]
dec_targ	13.095833	Observer's specified target Dec [deg]
ra_nom	41.573935962834	Nominal RA [deg]
dec_nom	13.095335448704	Nominal Dec [deg]
roll_nom	293.03707813256	Nominal Roll [deg]
revision	2	Processing version of data
ontime	15065.178922951	Sum of GTIs [s]
livetime	14868.341269499	Livetime [s]
ontime2	15058.732642353	Sum of GTIs [s]
ontime3	15061.955772579	Sum of GTIs [s]
ontime6	15065.137882948	Sum of GTIs [s]
ontime7	15065.178922951	Sum of GTIs [s]
ontime8	15061.914732635	Sum of GTIs [s]
l2events	76501	Number of level 2 events



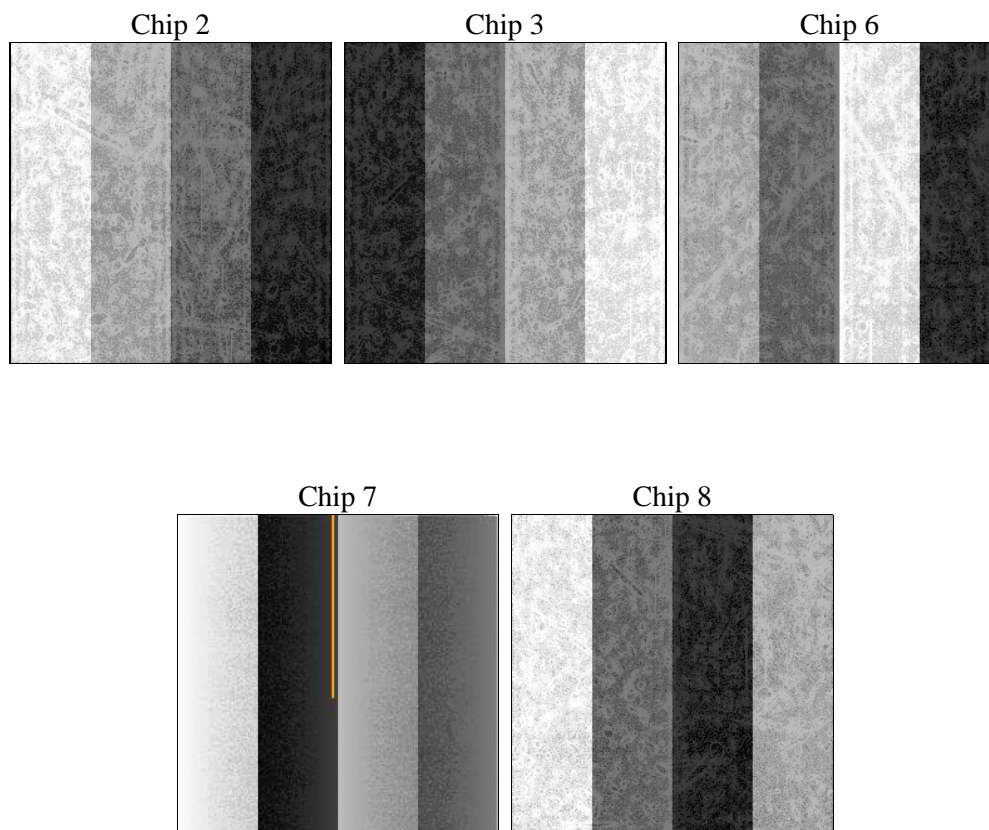
2 OBI

2.1 OBI

2.1.1 Images



2.1.2 Bias



2.1.3 Parameters

obi_num	0	Obi number	sched_exp_time	15000.000000	[s] Scheduled observation exposure time
ascdsver	10.3	Processing system revision	ontime	15065.178922951	Sum of GTIs [s]
caldsver	4.6.4	 	ontime2	15058.732642353	Sum of GTIs [s]
date	2014-11-30T00:31:06	Date and time of file creation	ontime3	15061.955772579	Sum of GTIs [s]
revision	2	Processing version of data	ontime6	15065.137882948	Sum of GTIs [s]
			ontime7	15065.178922951	Sum of GTIs [s]
			ontime8	15061.914732635	Sum of GTIs [s]
			l1events	432080	Number of level 1 events

2.1.4 Events

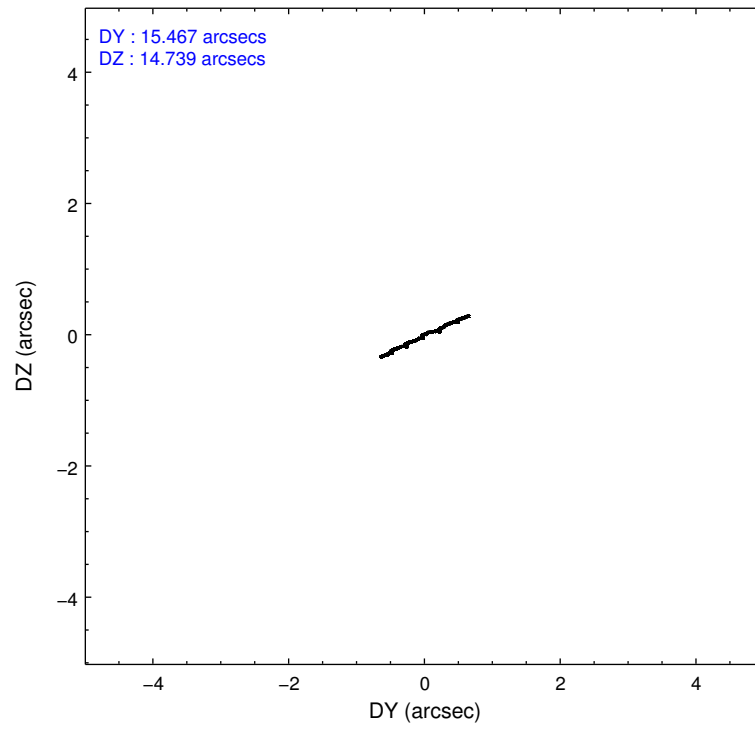
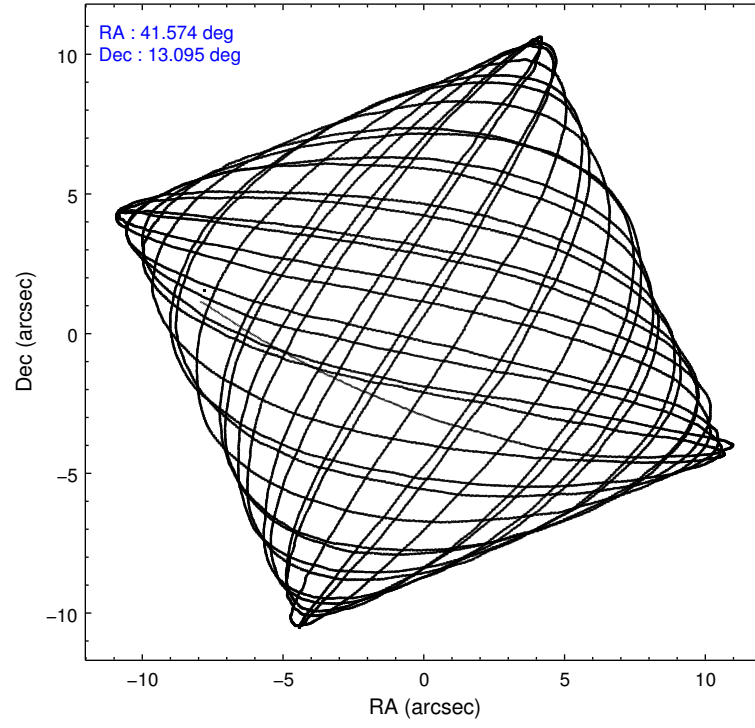
	ccd 2	ccd 3	ccd 6	ccd 7	ccd 8
level 1 events	75298	72042	78958	105639	100143
rejected events	66913	63624	69688	59832	74825
rejected %	88%	88%	88%	56%	74%

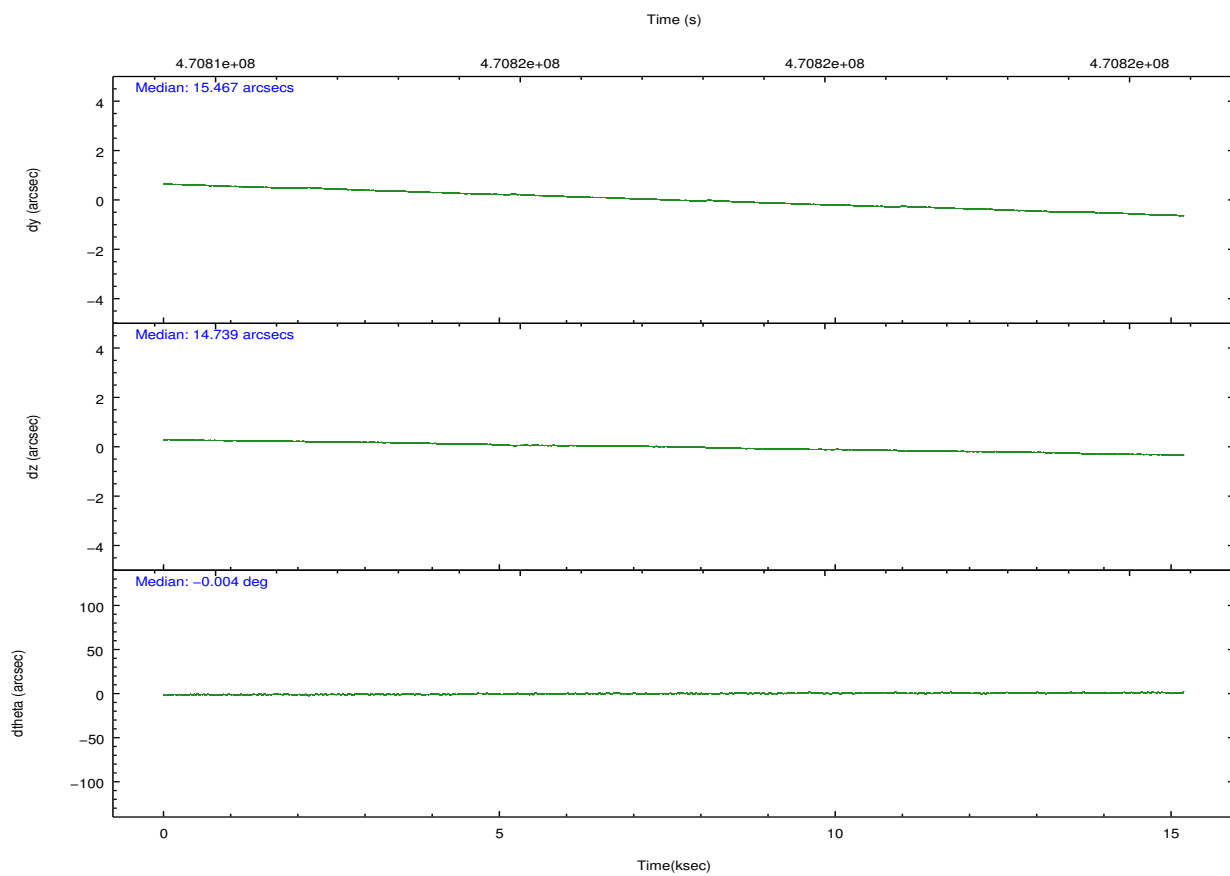
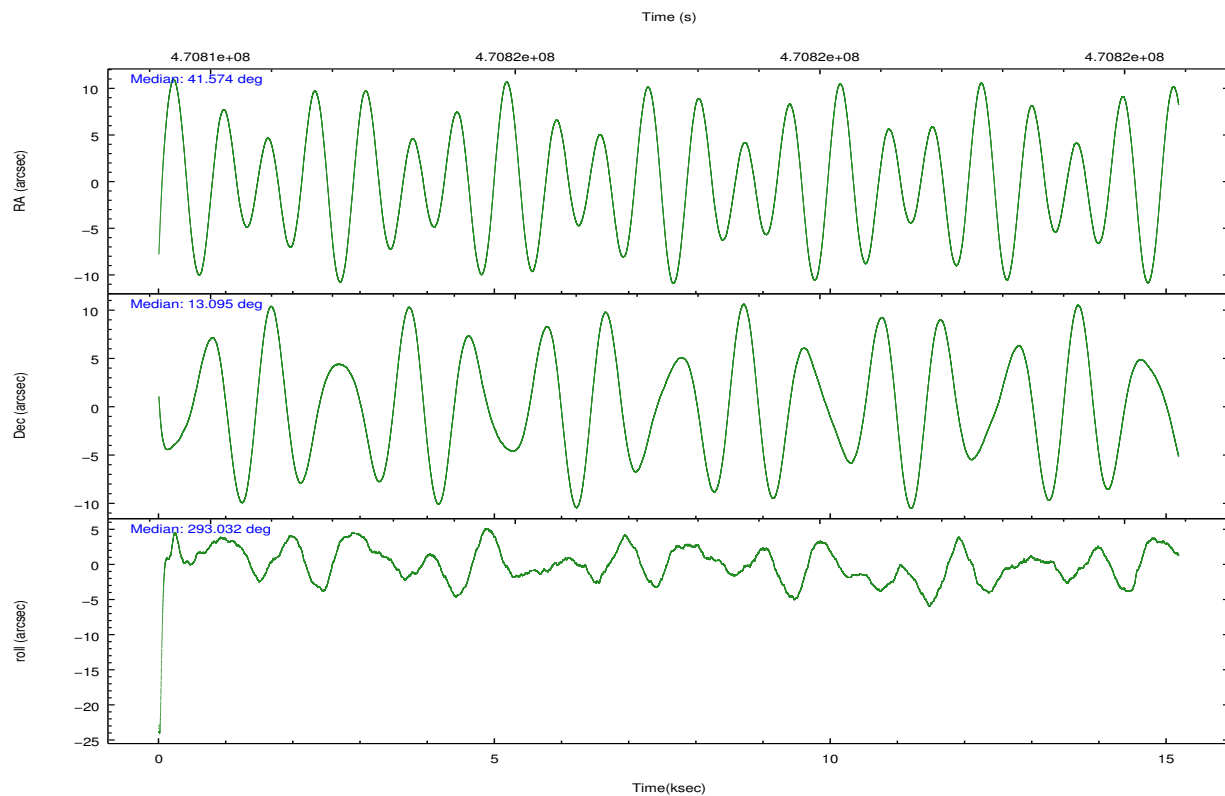
	ccd 2	ccd 3	ccd 6	ccd 7	ccd 8
grade 0 events	2926	2847	3100	3950	6907
	3%	3%	3%	3%	6%
grade 1 events	47	45	27	108	91
	0%	0%	0%	0%	0%
grade 2 events	1974	1872	2093	9400	6290
	2%	2%	2%	8%	6%
grade 3 events	848	925	933	3823	2640
	1%	1%	1%	3%	2%
grade 4 events	886	949	924	3830	2463
	1%	1%	1%	3%	2%
grade 5 events	3238	3993	4035	10702	5744
	4%	5%	5%	10%	5%
grade 6 events	1757	1831	2225	24822	7026
	2%	2%	2%	23%	7%
grade 7 events	63622	59580	65621	49004	68982
	84%	82%	83%	46%	68%

2.2 Compared Parameters

Parameter	Planned	Actual	Parameter	Planned	Actual
Instrument	ACIS	ACIS	Obspar format version number	7	7
Detector	ACIS-23678	ACIS-23678	Obspar file type	PREDICTED	ACTUAL
Grating	NONE	NONE	Obspar update status	NONE	UPDATED
Data mode	VFAINT	VFAINT	CCD I0 on	N	N
Observation mode	POINTING	POINTING	CCD I1 on	N	N
[deg] Pointing RA	41.551241	41.57393596283396	CCD I2 on	O2	Y
[deg] Pointing Dec	13.111473	13.09533544870415	CCD I3 on	Y	Y
[deg] Pointing Roll	292.885623	293.037078132556	CCD S0 on	N	N
[mm] SIM focus pos	-0.684267	-0.6828225247311905	CCD S1 on	O1	N
[mm] SIM defocus	0	0.001444936568705701	CCD S2 on	Y	Y
[mm] SIM translation stage pos	-190.132523	-190.1425803651734	CCD S3 on	Y	Y
[mm] SIM translation stage offset	0	0.01005778216563158	CCD S4 on	Y	Y
[s] Observation start time (MET)	470810108.184000	470808437.21499	CCD S5 on	N	N
Observation start date	2012-12-02T04:34:01	2012-12-02T04:07:17	Number of optional ACIS chips dropped	1	1
[s] Observation end time (MET)	470825108.184000	470825789.44092	On-chip summing requested	N	N
Observation end date	2012-12-02T08:44:01	2012-12-02T08:56:29	Subarray requested	NONE	NONE
Read mode	TIMED	TIMED	Alternating exposures requested	N	N
			[s] Primary exposure time	0.000000	3.1

2.3 Aspect



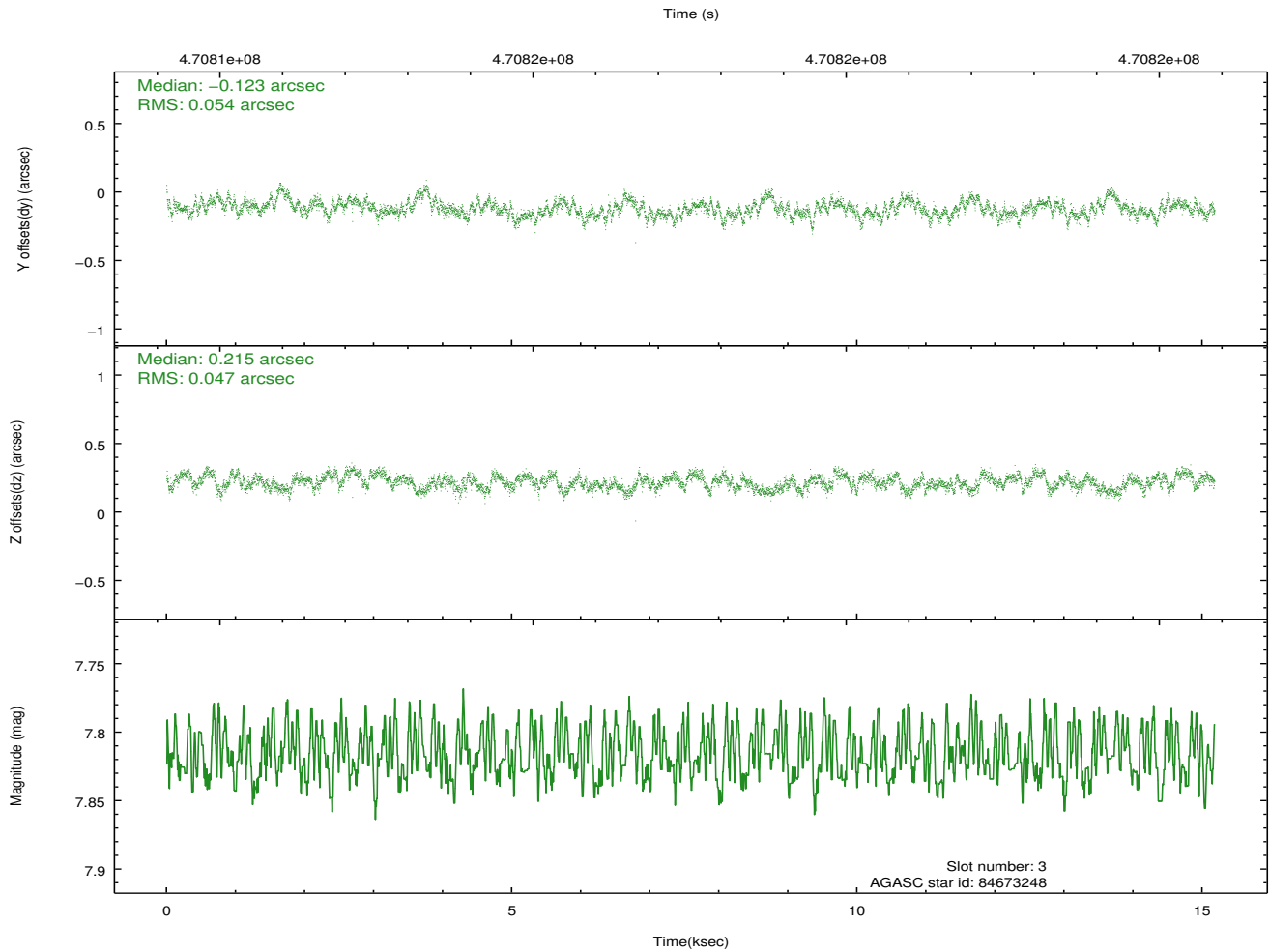
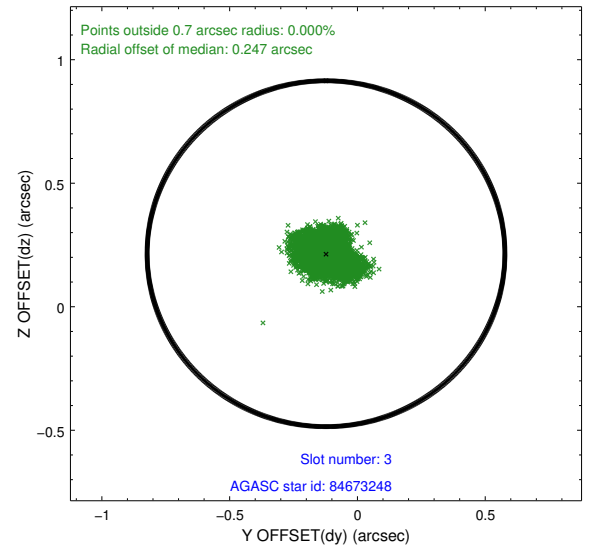
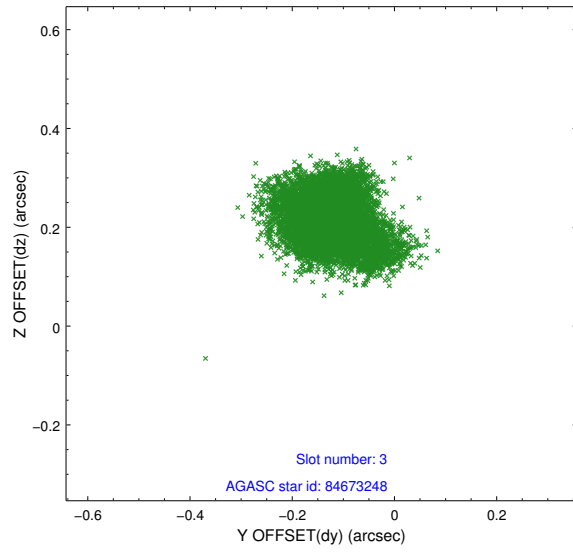


Slot Statistics

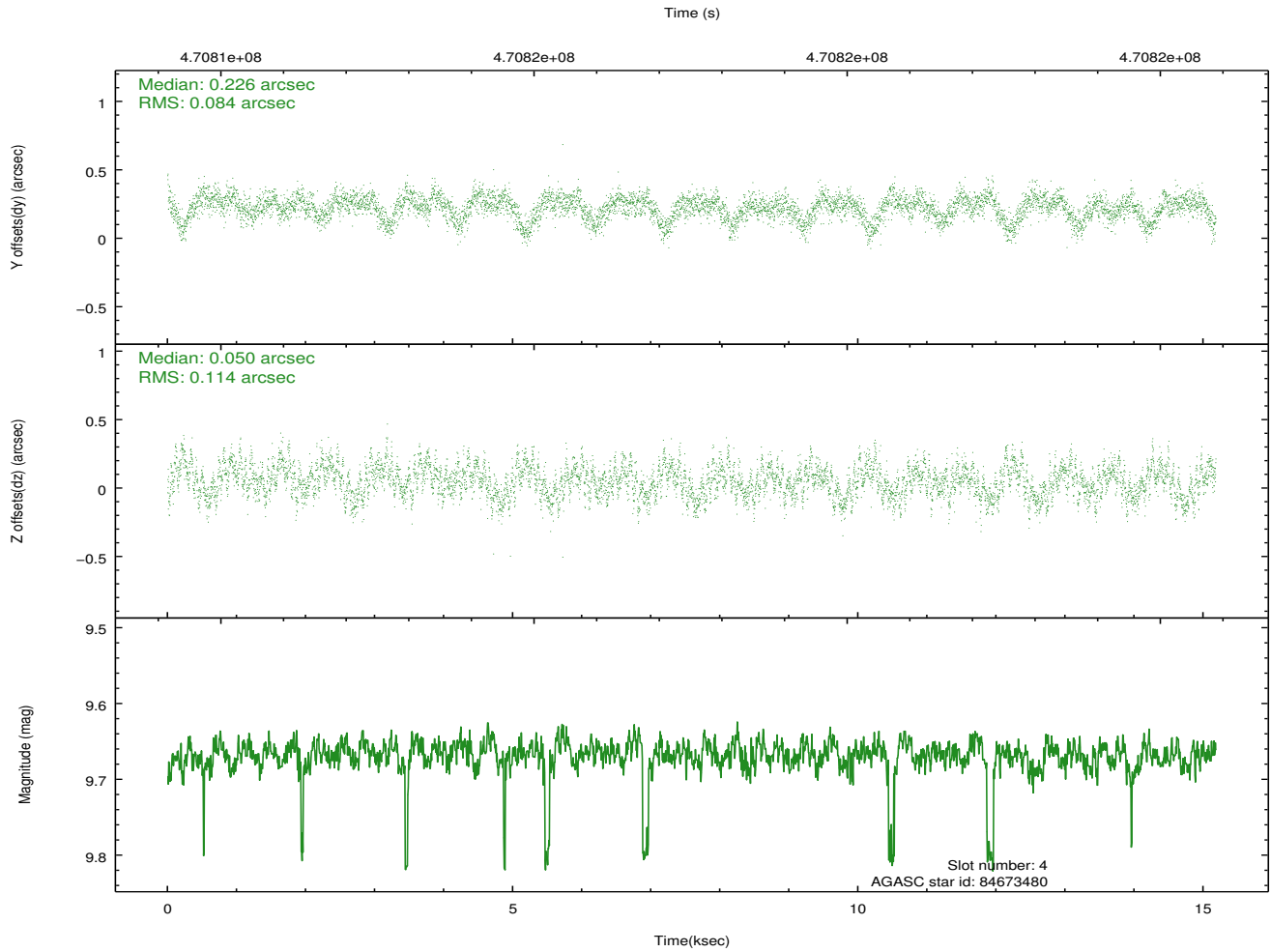
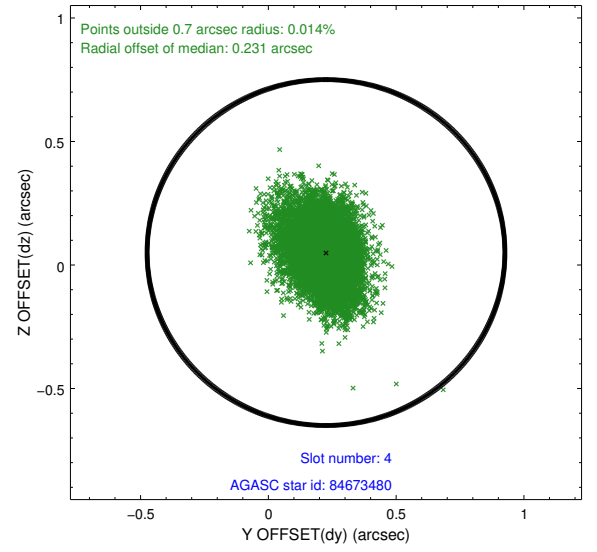
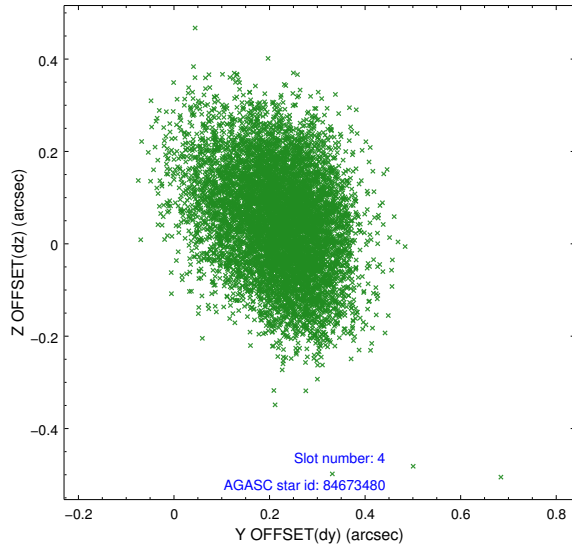
slot	status	used	id	mag	n_pts	med_dy	med_dz	dr1	dr2	ra	dec	mean_y	mean_z
0	FID		ACIS-S-2	7.05	3703	-0.130	-0.041	0.014	0.023	0.000000	0.000000	-768.58	-1736.08
1	FID		ACIS-S-4	7.14	3703	0.276	0.073	0.011	0.024	0.000000	0.000000	2144.96	172.21
2	FID		ACIS-S-5	7.17	3703	-0.177	-0.025	0.018	0.028	0.000000	0.000000	-1821.09	166.12
3	GUIDE	used	84673248	7.82	7407	-0.123	0.215	0.076	0.125	40.937266	13.290157	-1431.31	-1730.59
4	GUIDE	used	84673480	9.67	7377	0.226	0.050	0.150	0.246	40.936307	12.959812	-337.90	-2199.12
5	GUIDE	used	84675560	9.32	7393	0.003	-0.156	0.111	0.180	42.094029	12.950321	1273.29	1529.27
6	GUIDE	used	84675904	9.84	7381	0.043	0.071	0.161	0.271	41.637729	12.507630	2122.36	-565.03
7	GUIDE	used	84680232	8.56	7405	-0.148	-0.180	0.099	0.157	42.190777	13.035770	1121.17	1961.52

2.4 Star Slots

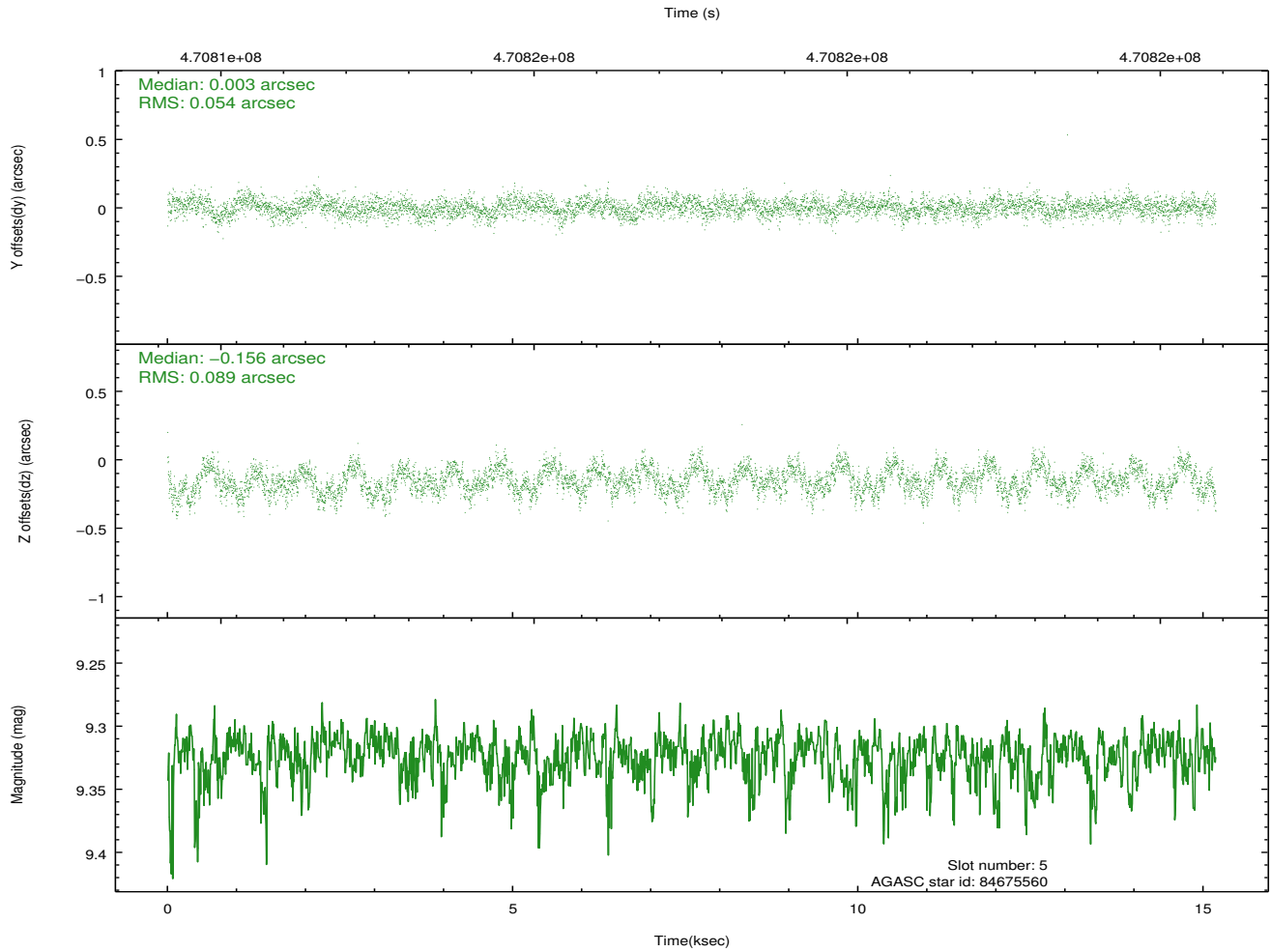
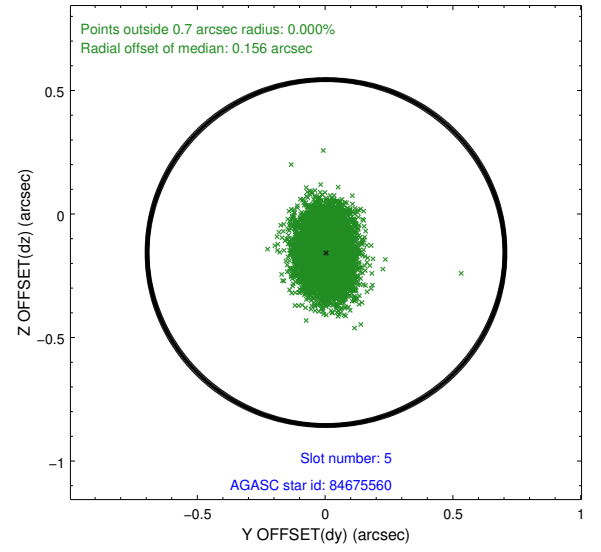
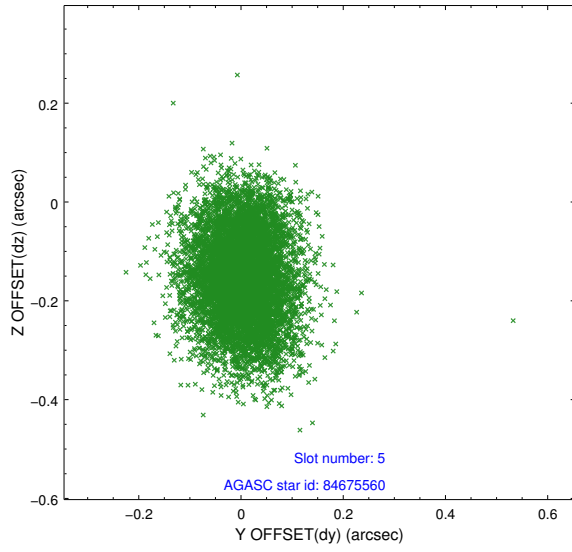
2.4.1 Slot 3



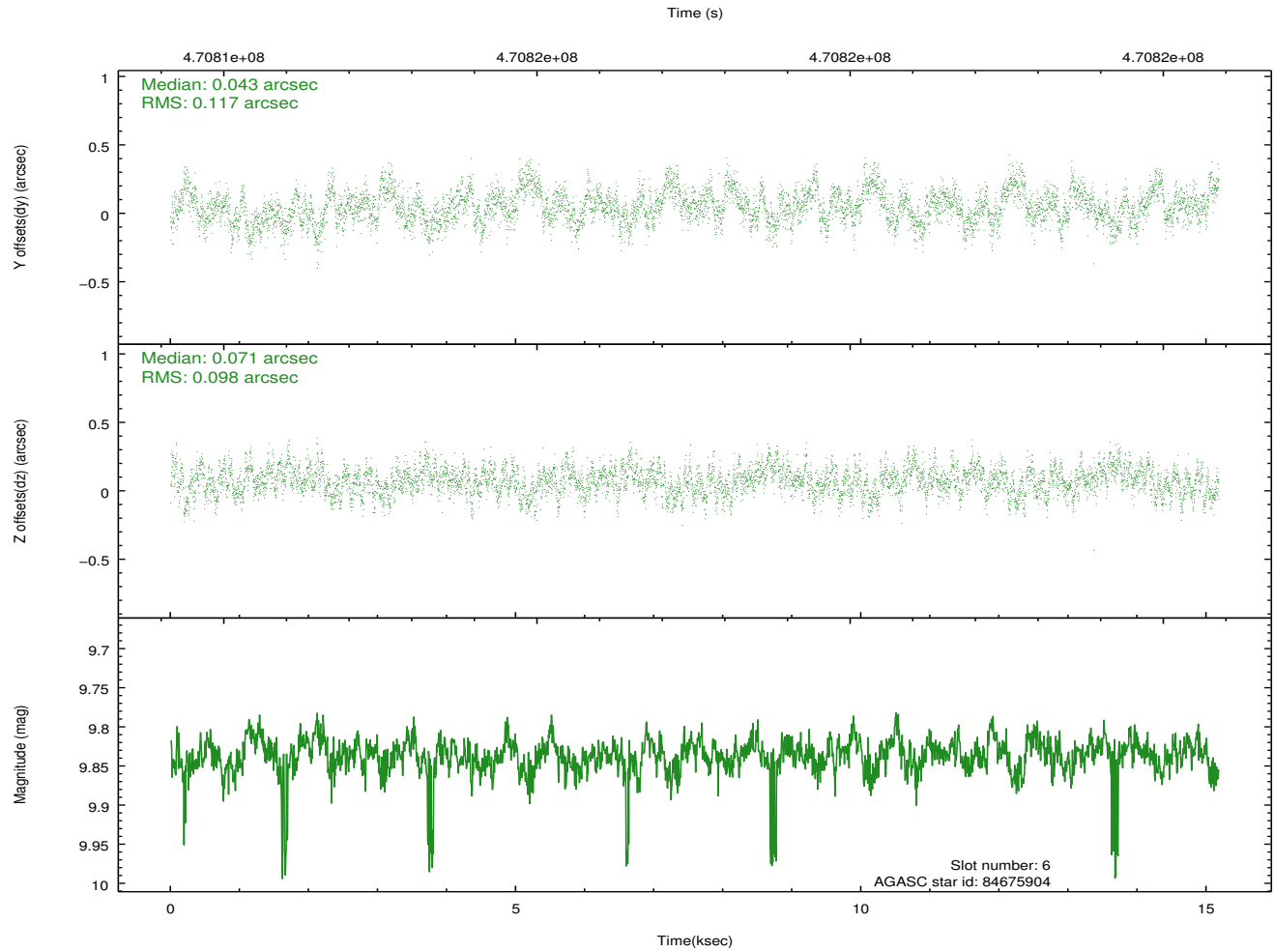
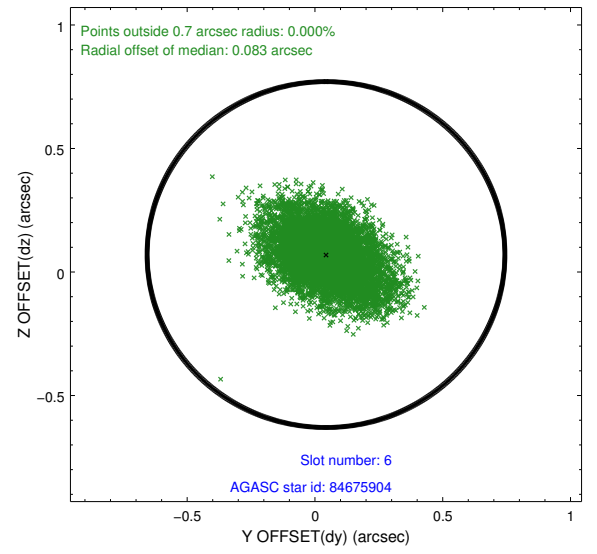
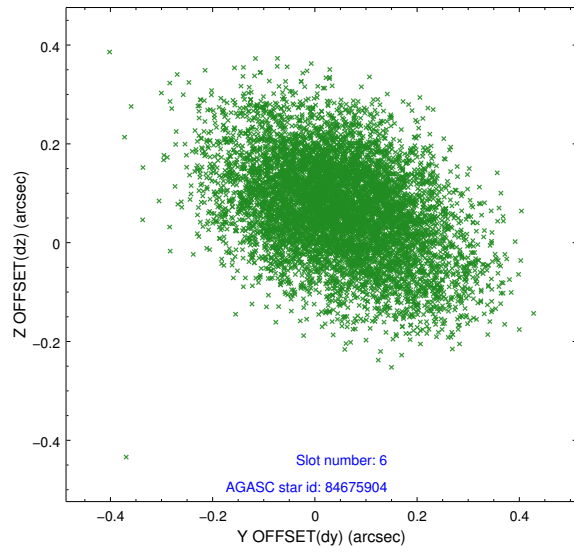
2.4.2 Slot 4



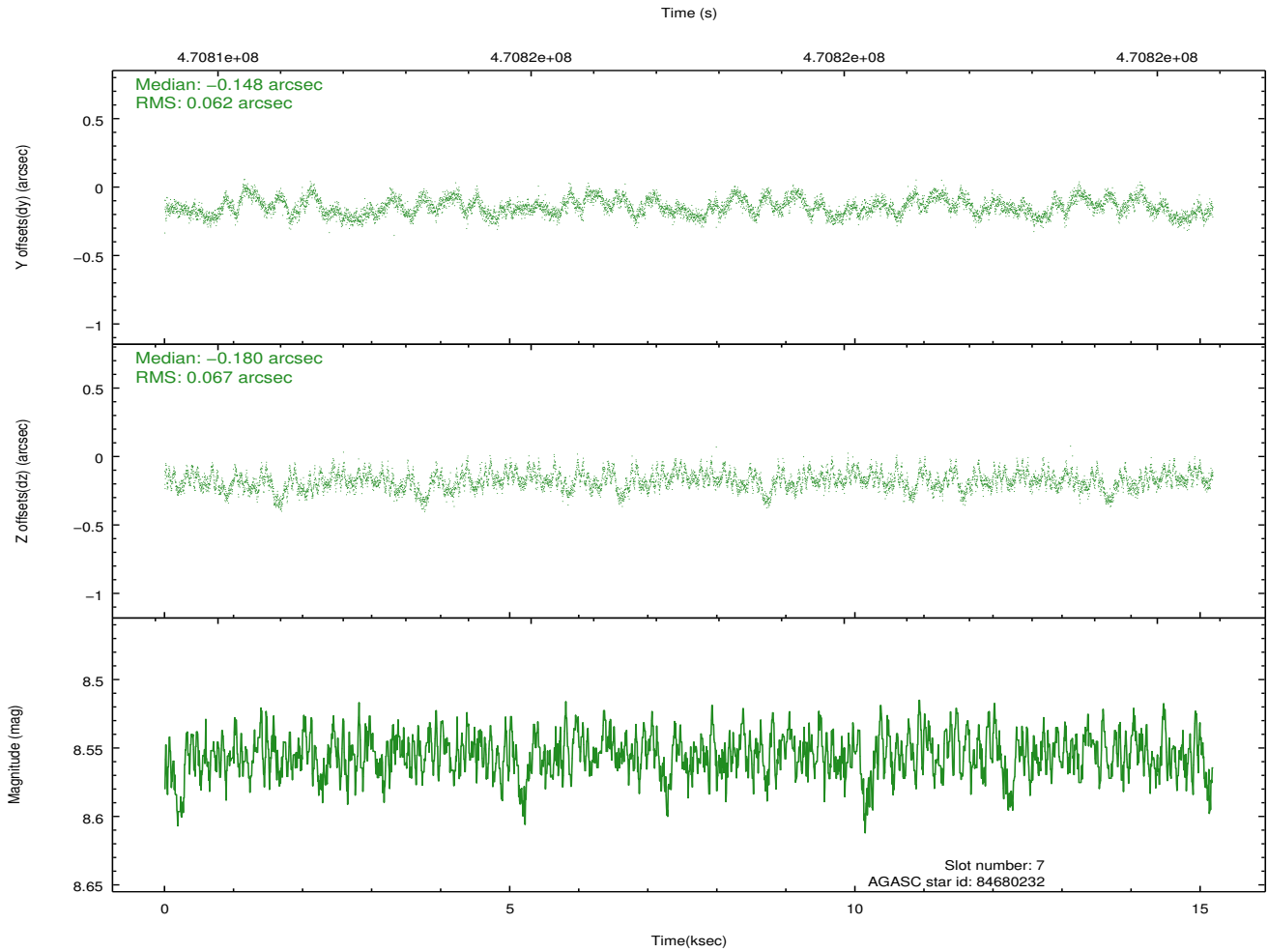
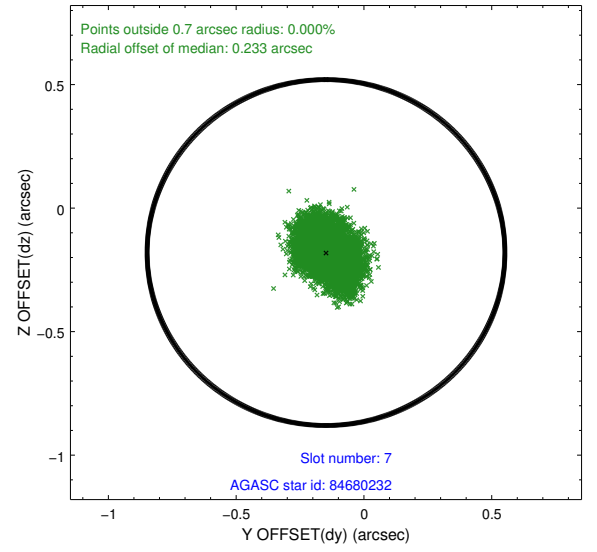
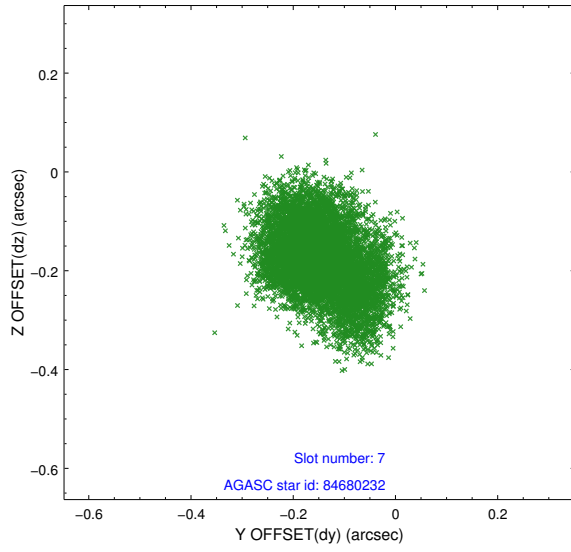
2.4.3 Slot 5



2.4.4 Slot 6

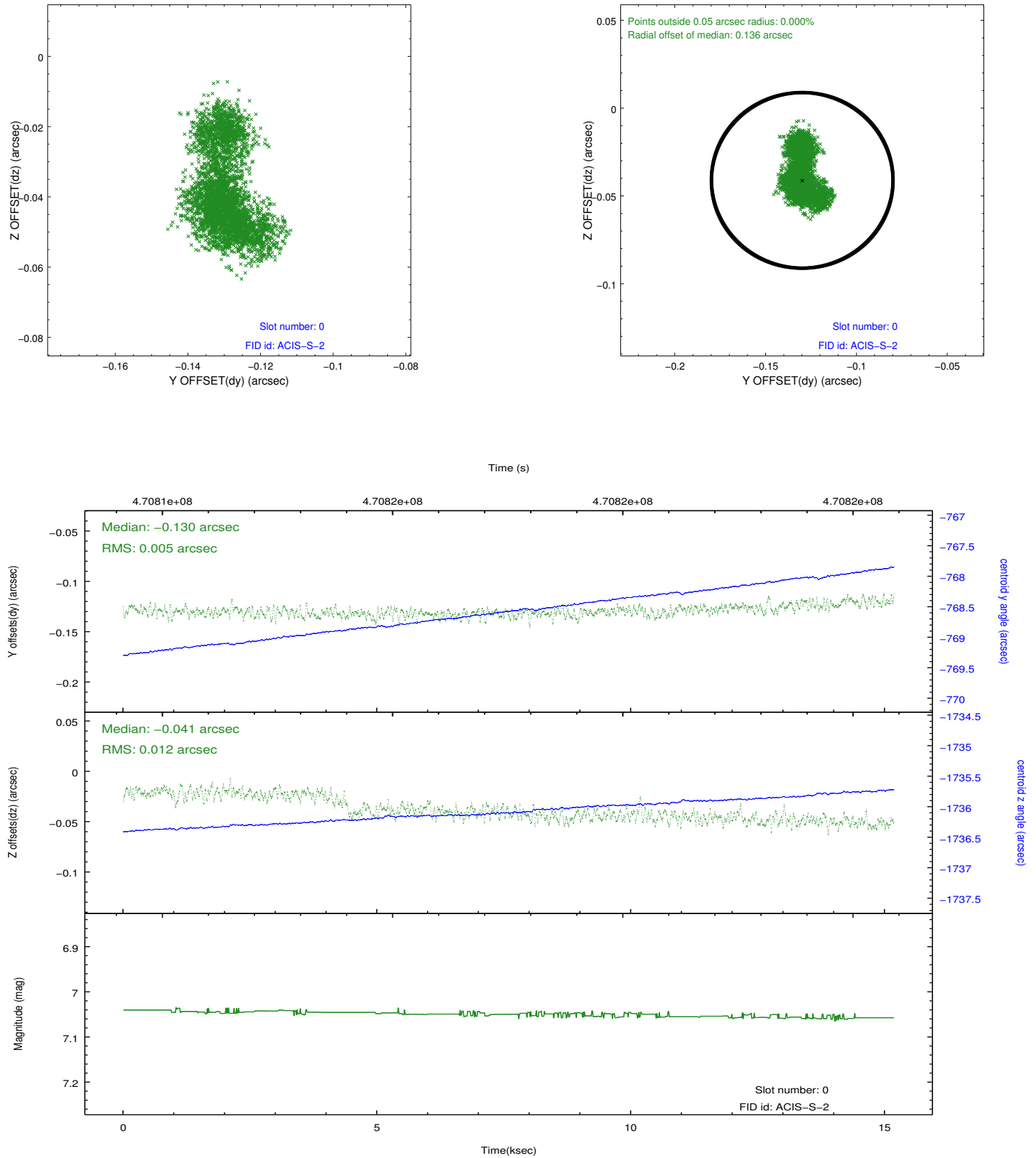


2.4.5 Slot 7

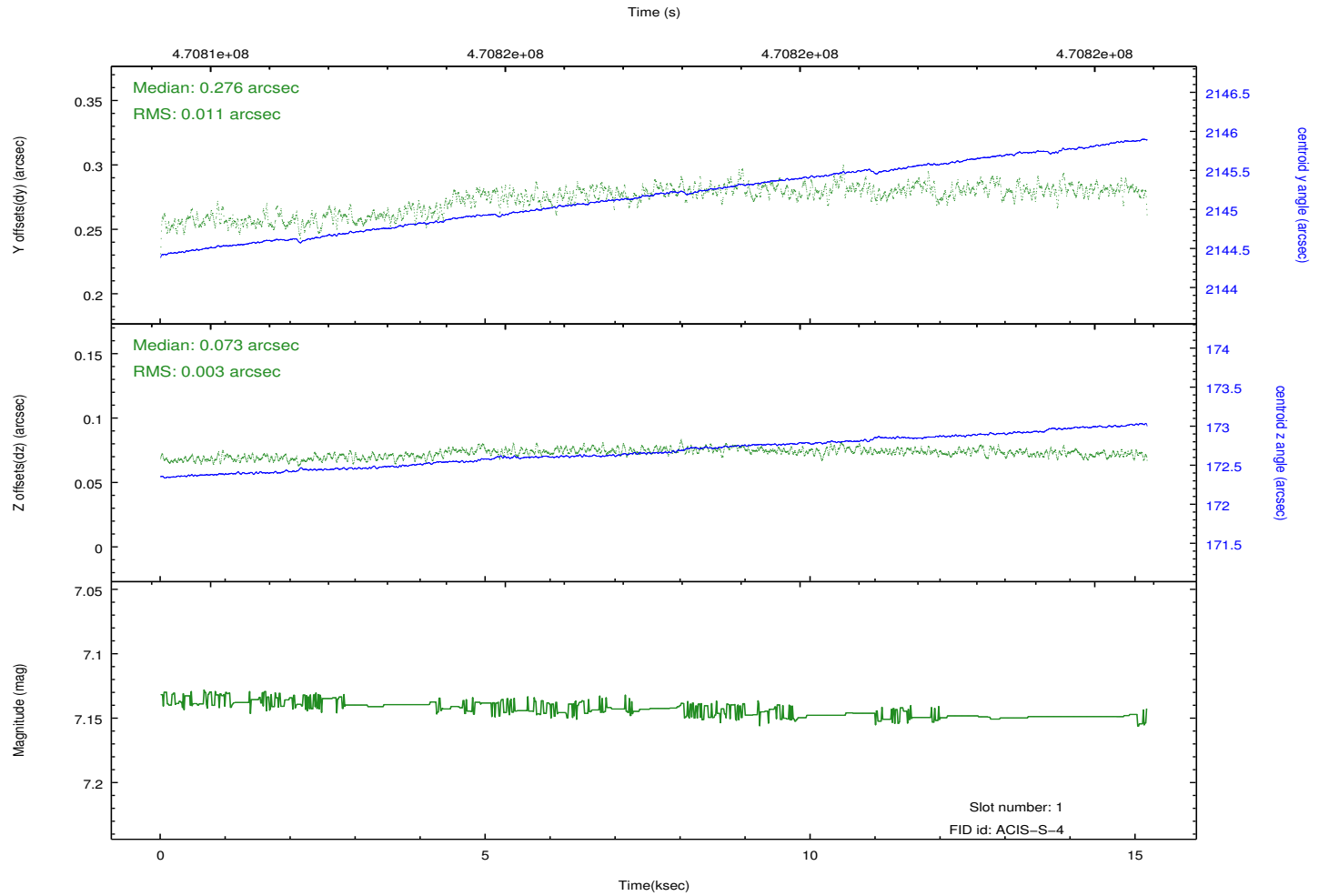
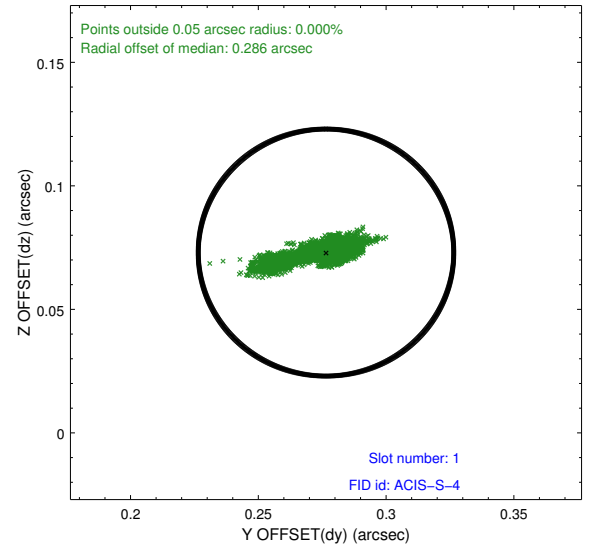
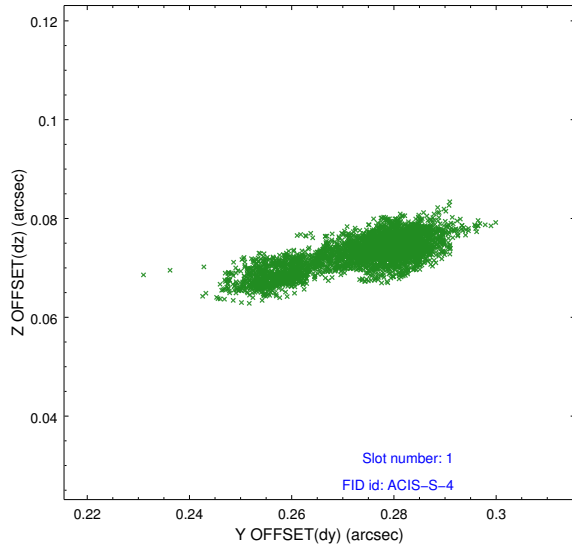


2.5 FID Slots

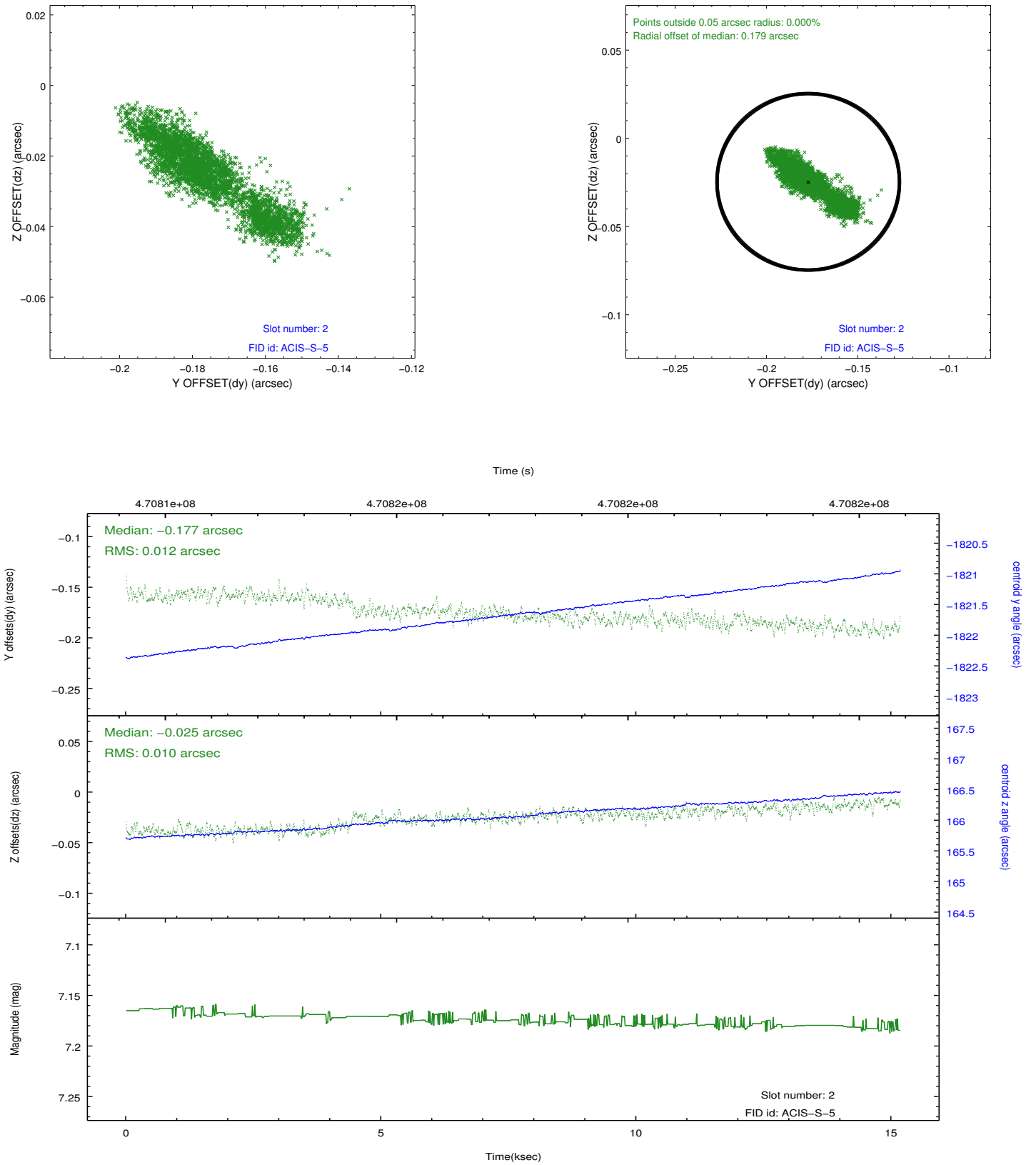
2.5.1 Slot 0



2.5.2 Slot 1



2.5.3 Slot 2



A Summary

A.1 Status

V&V Scientist	Beth Sundheim
V&V Date (YYYY-MM-DD)	2014.12.03
V&V Edition	1
V&V Disposition and Status	OK
V&V Charge Time	15.065178922951

A.2 Comments

These data have been reprocessed with new aspect alignment calibration files that correct small mean offsets (up to 0.4 arcsecs) and improve overall astrometric accuracy. The new calibration was determined using data from the time period being reprocessed and was performed using cross-correlation of X-ray sources with radio and optical counterparts.