

V&V Reference Report

L2 ASCDS Version : 8.5.1.1

Observation 15064 - L2 Version 2
Chandra X-Ray Center

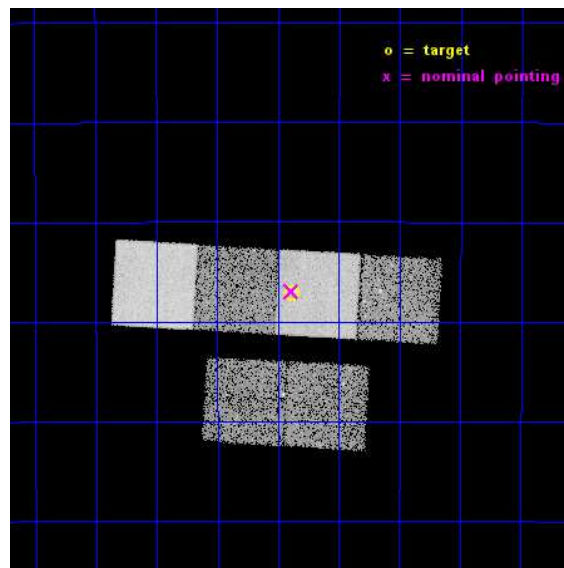
L2 Processing Date : Dec 2 2014

Contents

1	Front	2
2	OBI	3
2.1	OBI	3
2.1.1	Images	3
2.1.2	Bias	3
2.1.3	Parameters	4
2.1.4	Events	4
2.2	Compared Parameters	5
2.3	Aspect	6
2.4	Star Slots	9
2.4.1	Slot 3	9
2.4.2	Slot 4	10
2.4.3	Slot 5	11
2.4.4	Slot 6	12
2.4.5	Slot 7	13
2.5	FID Slots	14
2.5.1	Slot 0	14
2.5.2	Slot 1	15
2.5.3	Slot 2	16
A	Summary	17
A.1	Status	17
A.2	Comments	17

1 Front

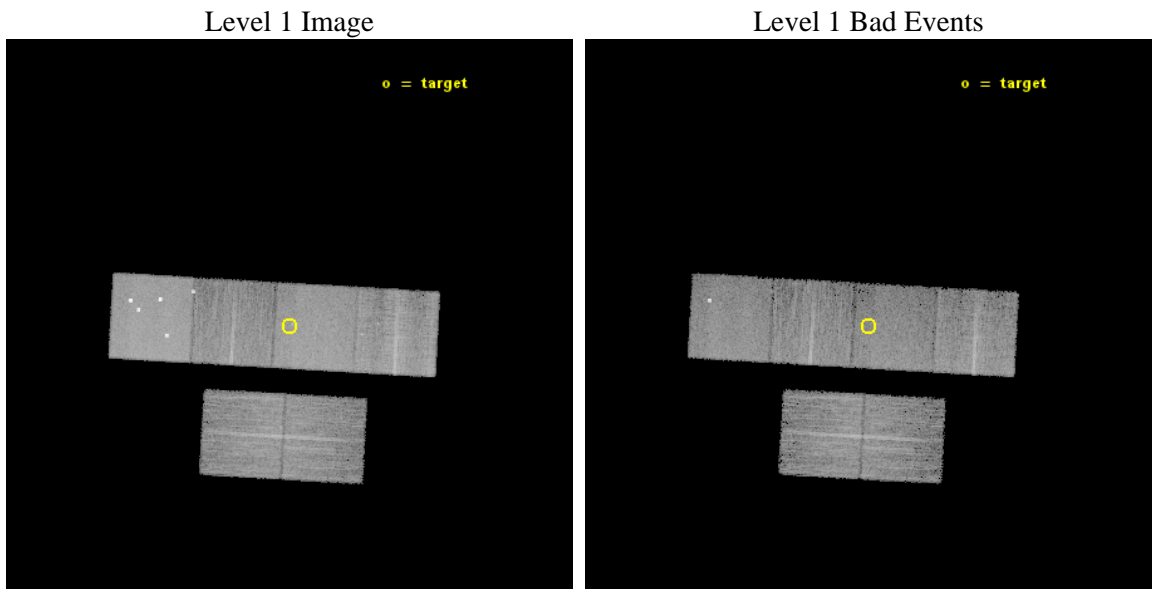
seq_num	702871	Sequence number
obs_id	15064	Observation id
title	C-GOALS: The Chandra-RBGS Survey of a Complete Sample of Major-Merger LIRGs	Proposal title
observer	Professor David Sanders	Principal investigator
object	ESO 440-IG058	Source name
dtcycle	0	
cycle	P	events from which exps? Prim/Second/Both
ra_targ	181.720833	Observer's specified target RA [deg]
dec_targ	-31.952222	Observer's specified target Dec [deg]
ra_nom	181.72258395178	Nominal RA [deg]
dec_nom	-31.949545478617	Nominal Dec [deg]
roll_nom	3.1997577449345	Nominal Roll [deg]
revision	2	Processing version of data
ontime	14966.399944305	Sum of GTIs [s]
livetime	14776.886376526	Livetime [s]
ontime2	14966.399944305	Sum of GTIs [s]
ontime3	14966.399944305	Sum of GTIs [s]
ontime5	14966.399944305	Sum of GTIs [s]
ontime6	14966.399944305	Sum of GTIs [s]
ontime7	14966.399944305	Sum of GTIs [s]
ontime8	14966.399944305	Sum of GTIs [s]
l2events	127994	Number of level 2 events



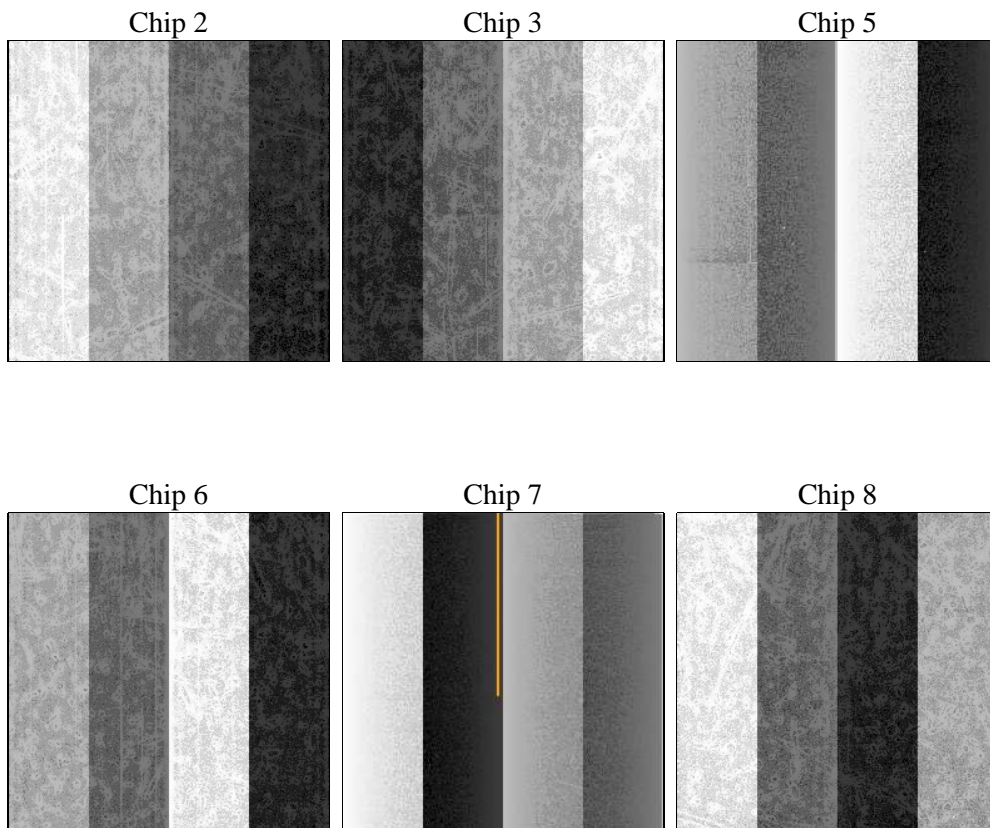
2 OBI

2.1 OBI

2.1.1 Images



2.1.2 Bias



2.1.3 Parameters

obi_num	1	Obi number	sched_exp_time	15000.000000	[s] Scheduled observation exposure time
ascdsver	10.3	Processing system revision	ontime	14966.399944305	Sum of GTIs [s]
caldsver	4.6.4	 	ontime2	14966.399944305	Sum of GTIs [s]
date	2014-12-02T07:21:39	Date and time of file creation	ontime3	14966.399944305	Sum of GTIs [s]
revision	2	Processing version of data	ontime5	14966.399944305	Sum of GTIs [s]
			ontime6	14966.399944305	Sum of GTIs [s]
			ontime7	14966.399944305	Sum of GTIs [s]
			ontime8	14966.399944305	Sum of GTIs [s]
			l1events	545811	Number of level 1 events

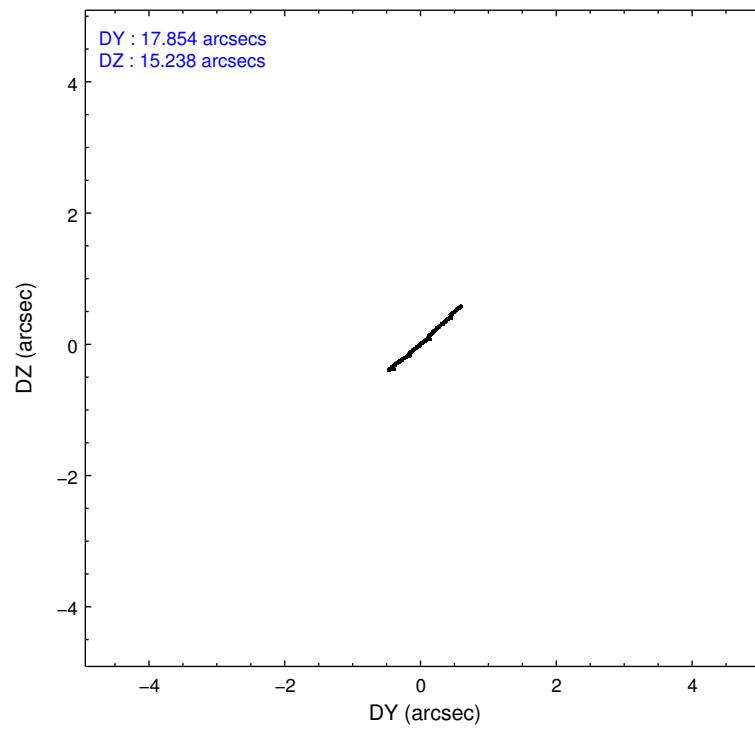
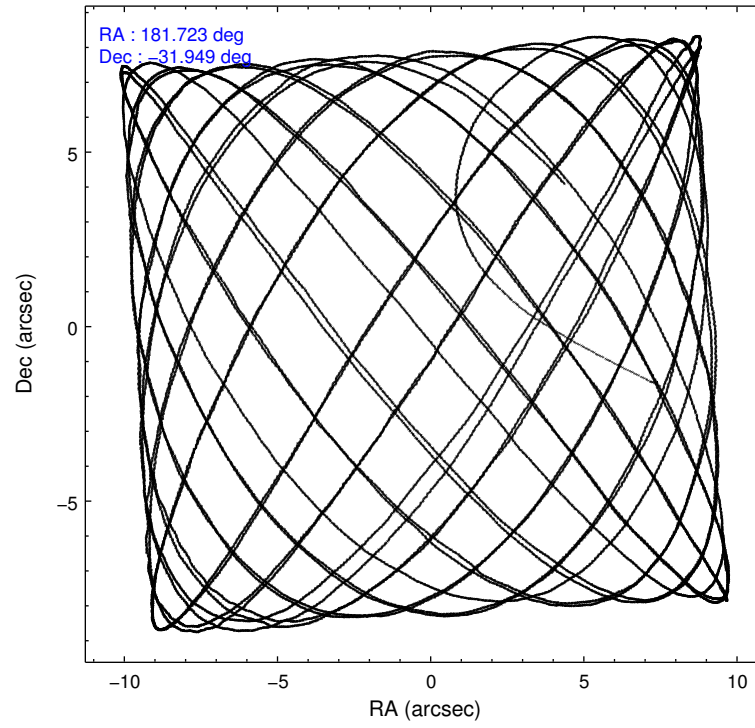
2.1.4 Events

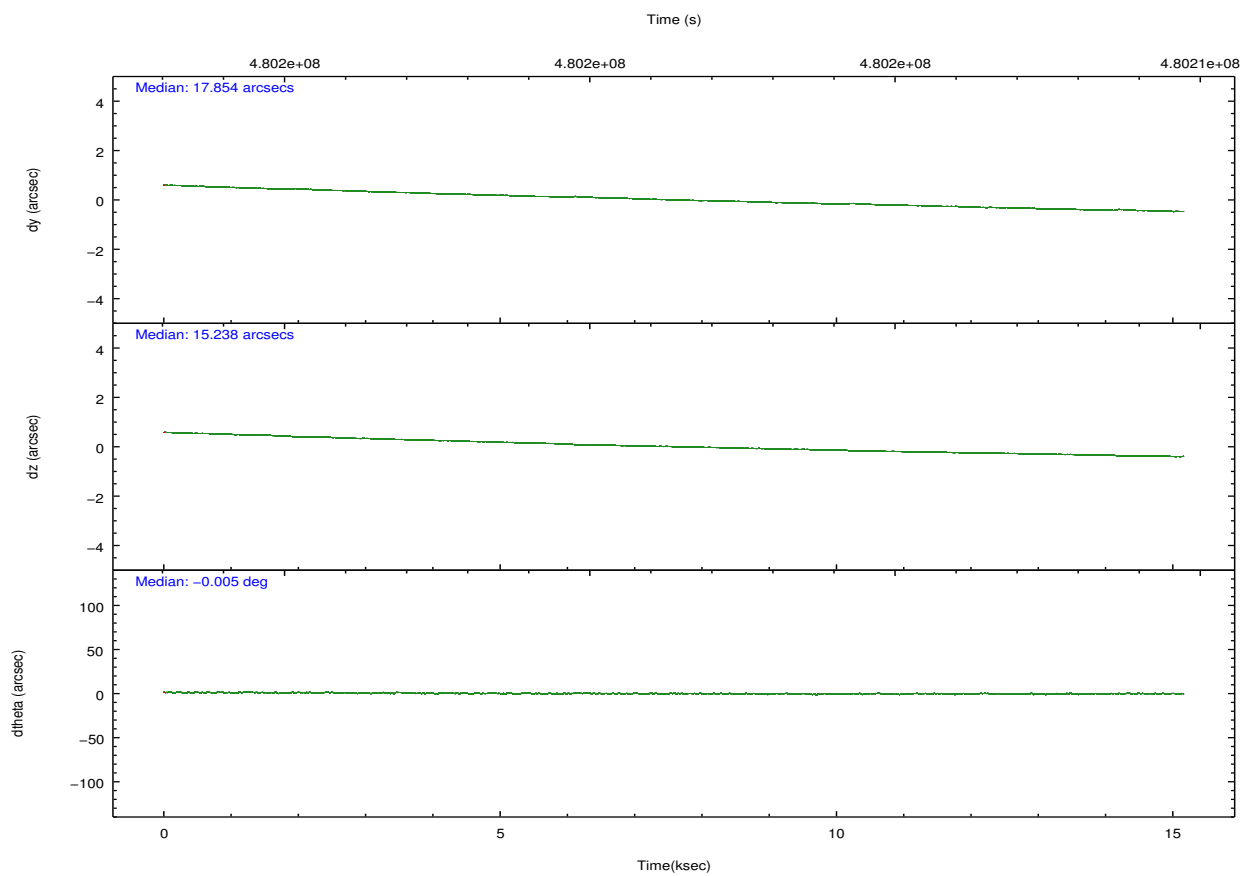
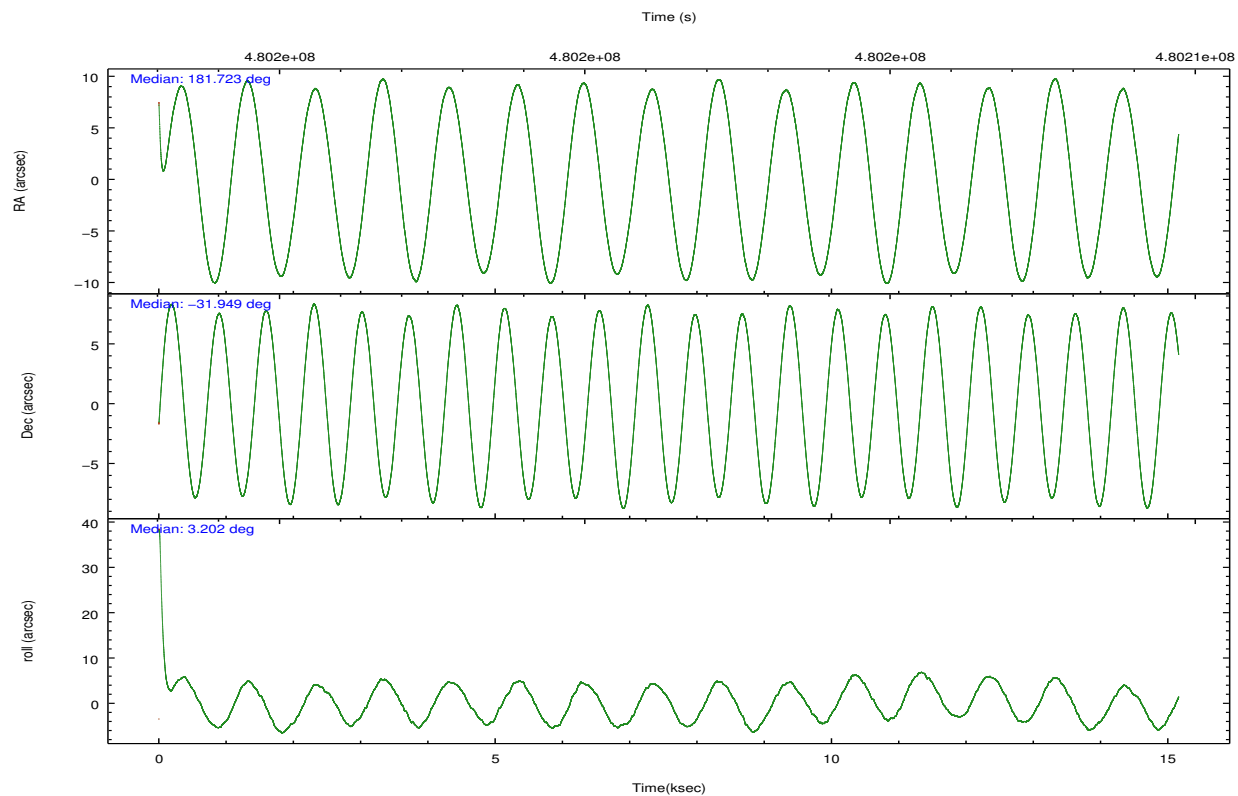
	ccd 2	ccd 3	ccd 5	ccd 6	ccd 7	ccd 8		ccd 2	ccd 3	ccd 5	ccd 6	ccd 7	ccd 8
level 1 events	76140	68004	133416	72111	100002	96138	grade 0 events	2994	2888	14399	3055	3934	7603
rejected events	67520	60016	64417	63020	56549	70322		3%	4%	10%	4%	3%	7%
rejected %	88%	88%	48%	87%	56%	73%	grade 1 events	45	44	251	40	99	78
								0%	0%	0%	0%	0%	0%
							grade 2 events	2161	1806	19267	2015	8730	5947
								2%	2%	14%	2%	8%	6%
							grade 3 events	843	857	1989	975	3759	2788
								1%	1%	1%	1%	3%	2%
							grade 4 events	906	835	1911	942	3677	2583
								1%	1%	1%	1%	3%	2%
							grade 5 events	3360	3941	9377	3817	10311	5606
								4%	5%	7%	5%	10%	5%
							grade 6 events	1718	1604	31448	2105	23365	6933
								2%	2%	23%	2%	23%	7%
							grade 7 events	64113	56029	54774	59162	46127	64600
								84%	82%	41%	82%	46%	67%

2.2 Compared Parameters

Parameter	Planned	Actual	Parameter	Planned	Actual
Instrument	ACIS	ACIS	Obspar format version number	7	7
Detector	ACIS-235678	ACIS-235678	Obspar file type	PREDICTED	ACTUAL
Grating	NONE	NONE	Obspar update status	NONE	UPDATED
Data mode	VFAINT	VFAINT	CCD I0 on	N	N
Observation mode	POINTING	POINTING	CCD I1 on	N	N
[deg] Pointing RA	181.695853	181.7225839517811	CCD I2 on	O2	Y
[deg] Pointing Dec	-31.964867	-31.94954547861683	CCD I3 on	Y	Y
[deg] Pointing Roll	3.028955	3.1997577449345	CCD S0 on	N	N
[mm] SIM focus pos	-0.684267	-0.6828225247311905	CCD S1 on	O1	Y
[mm] SIM defocus	0	0.001444936568705701	CCD S2 on	Y	Y
[mm] SIM translation stage pos	-190.132523	-190.1400660498719	CCD S3 on	Y	Y
[mm] SIM translation stage offset	0	0.00754346686406393	CCD S4 on	Y	Y
[s] Observation start time (MET)	480193954.184000	480192217.39637	CCD S5 on	N	N
Observation start date	2013-03-20T19:11:27	2013-03-20T18:43:37	Number of optional ACIS chips dropped	0	0
[s] Observation end time (MET)	480208954.184000	480209892.49733	On-chip summing requested	N	N
Observation end date	2013-03-20T23:21:27	2013-03-20T23:38:12	Subarray requested	NONE	NONE
Read mode	TIMED	TIMED	Alternating exposures requested	N	N
			[s] Primary exposure time	0.000000	3.2

2.3 Aspect



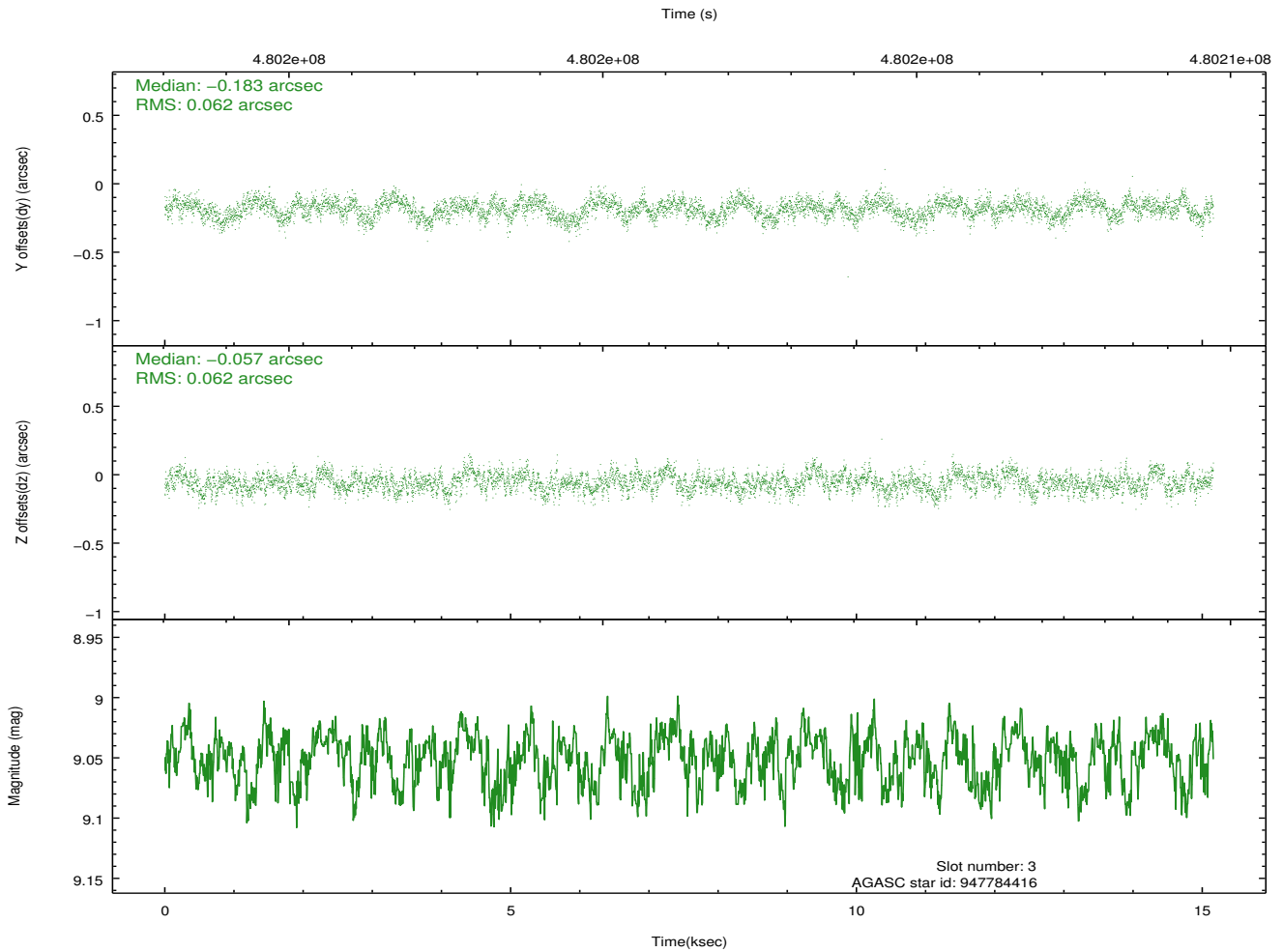
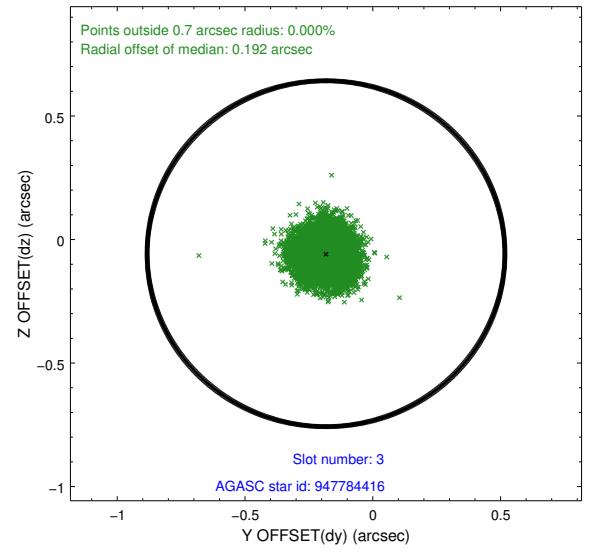
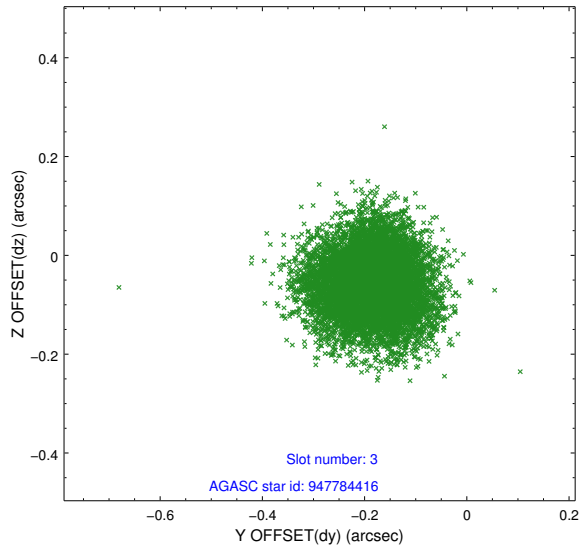


Slot Statistics

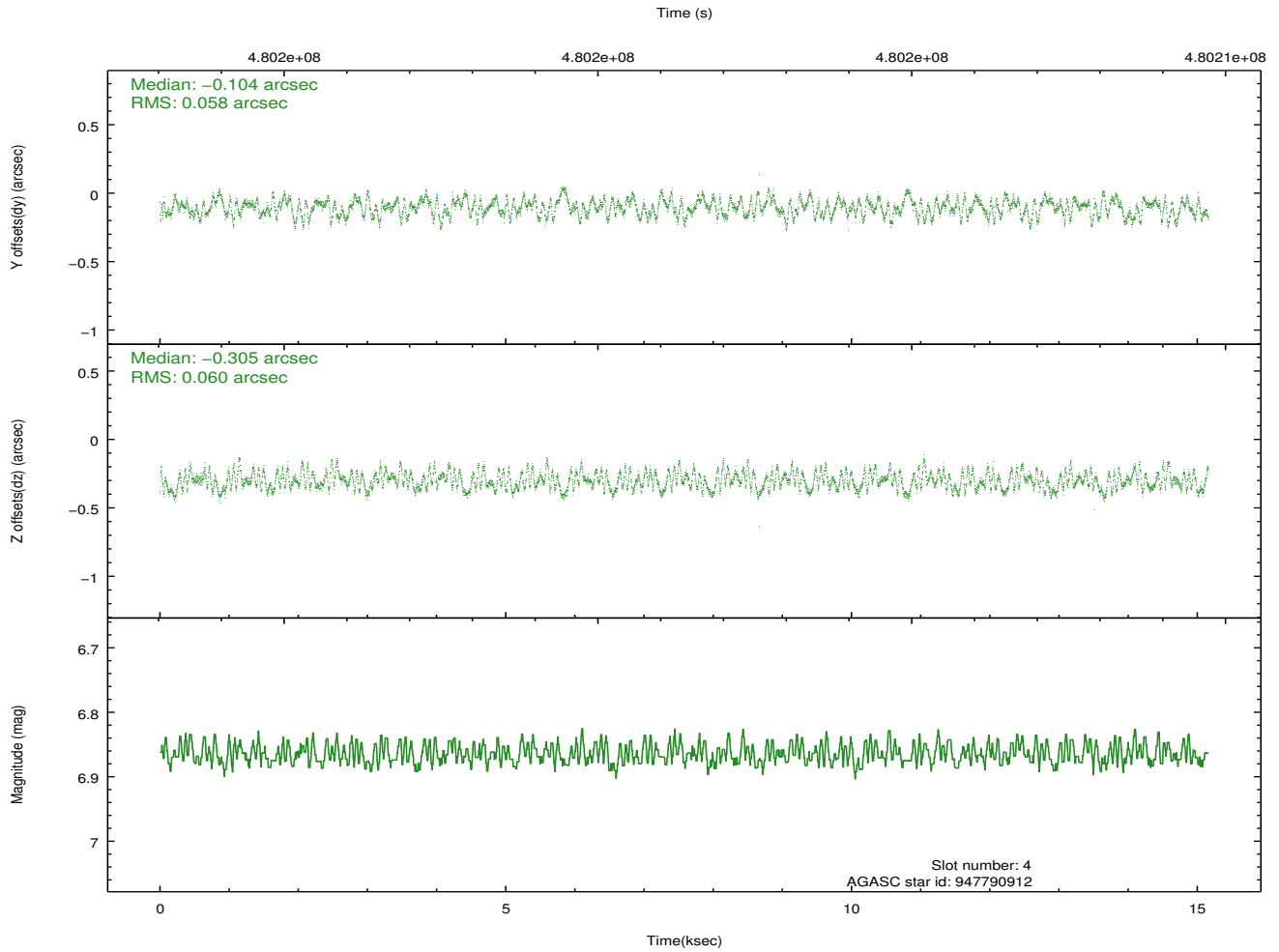
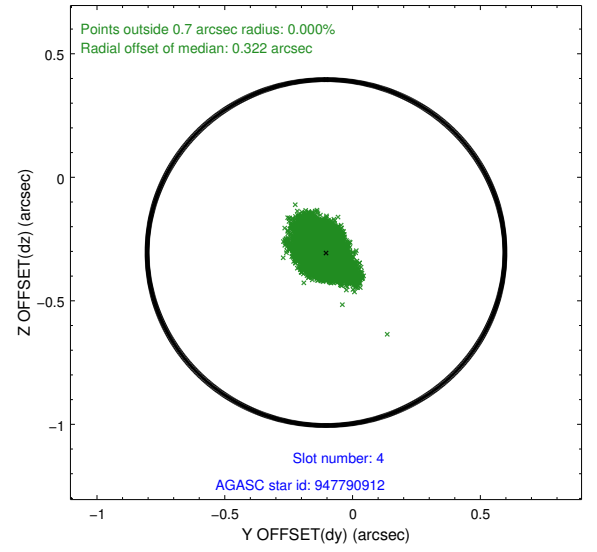
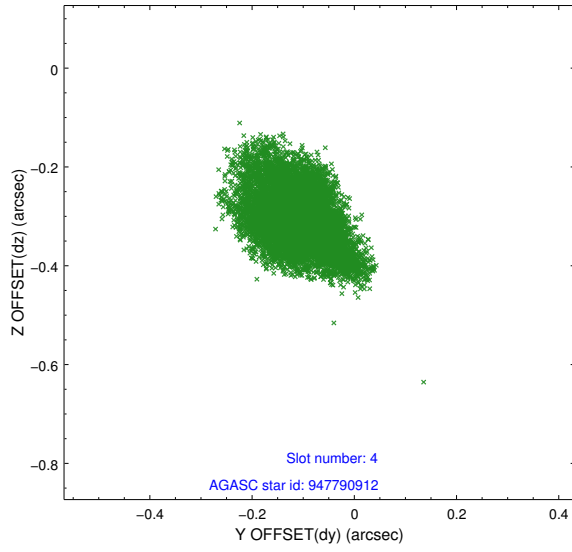
slot	status	used	id	mag	n_pts	med_dy	med_dz	dr1	dr2	ra	dec	mean_y	mean_z
0	FID		ACIS-S-2	6.98	3698	-0.117	-0.015	0.006	0.011	0.000000	0.000000	-771.02	-1736.68
1	FID		ACIS-S-4	7.06	3697	0.274	0.061	0.019	0.027	0.000000	0.000000	2142.49	171.59
2	FID		ACIS-S-5	7.09	3698	-0.188	-0.037	0.018	0.026	0.000000	0.000000	-1823.58	165.47
3	GUIDE	used	947784416	9.05	7380	-0.183	-0.057	0.095	0.149	181.377215	-31.685413	-921.94	1054.64
4	GUIDE	used	947790912	6.87	7396	-0.104	-0.305	0.089	0.143	181.897072	-31.410557	721.04	1957.85
5	GUIDE	used	947915752	9.38	7383	0.086	0.041	0.107	0.169	182.323254	-31.531621	2004.63	1450.21
6	GUIDE	used	948317376	8.35	7392	-0.123	0.154	0.074	0.114	181.066740	-32.105969	-1942.87	-411.17
7	GUIDE	used	948316416	8.87	7393	0.326	0.168	0.112	0.179	180.959316	-32.453354	-2327.80	-1645.50

2.4 Star Slots

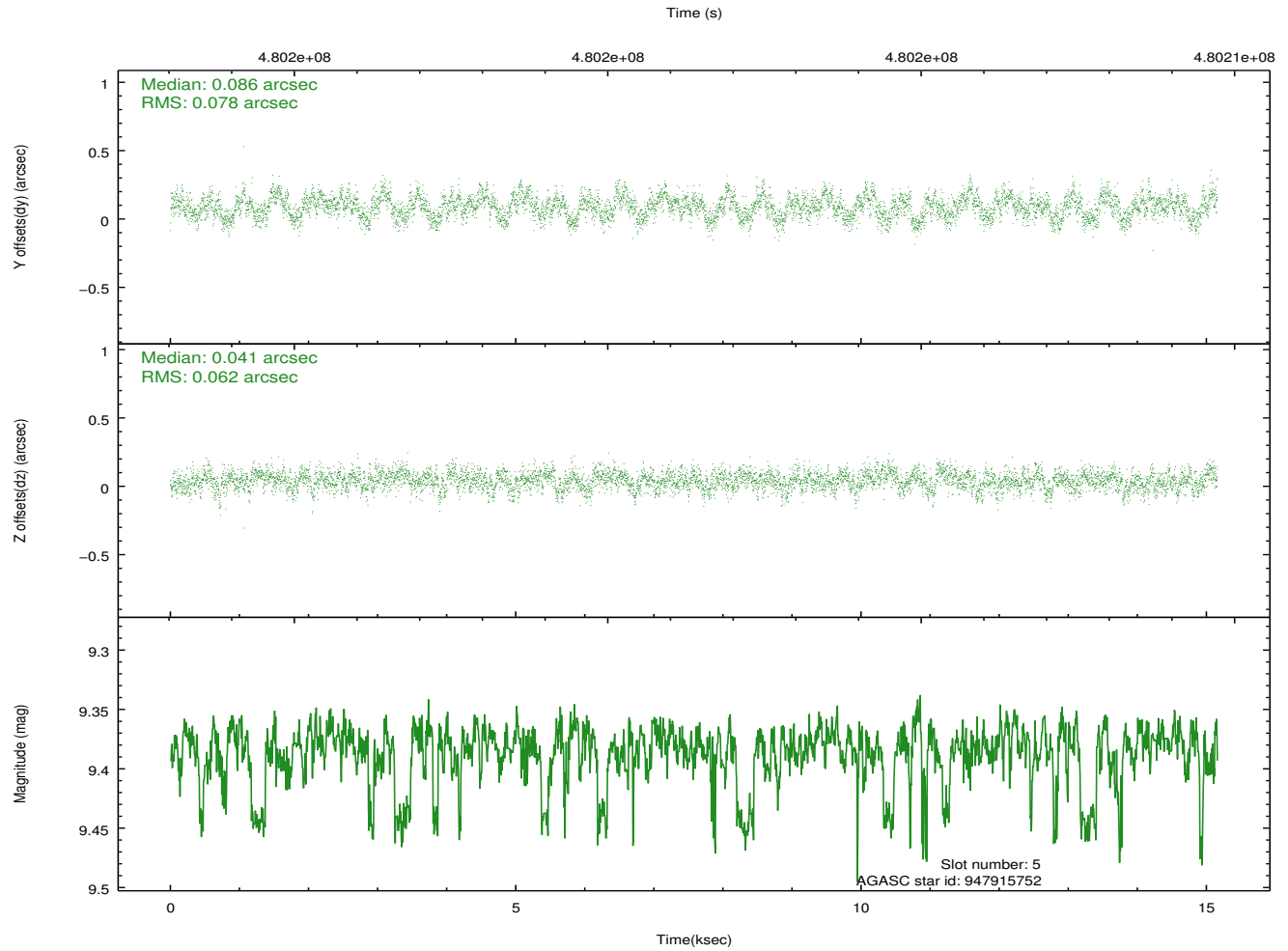
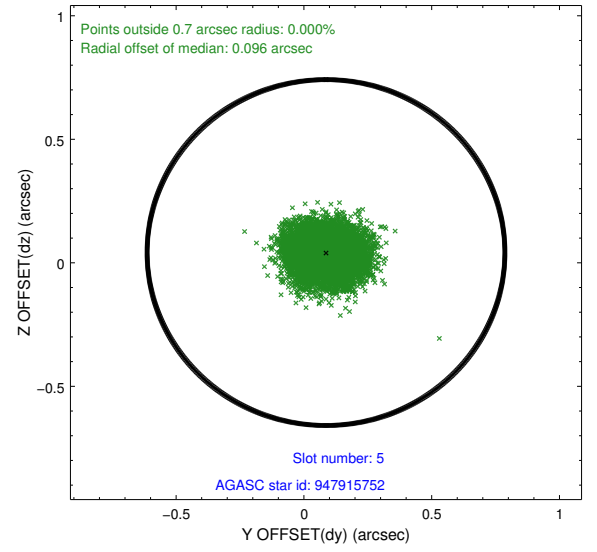
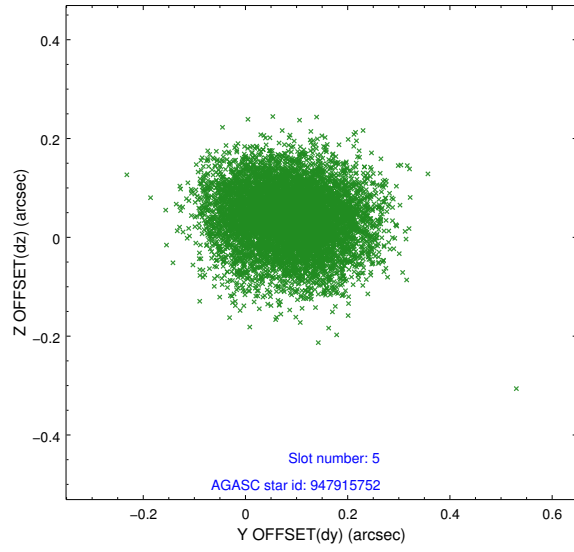
2.4.1 Slot 3



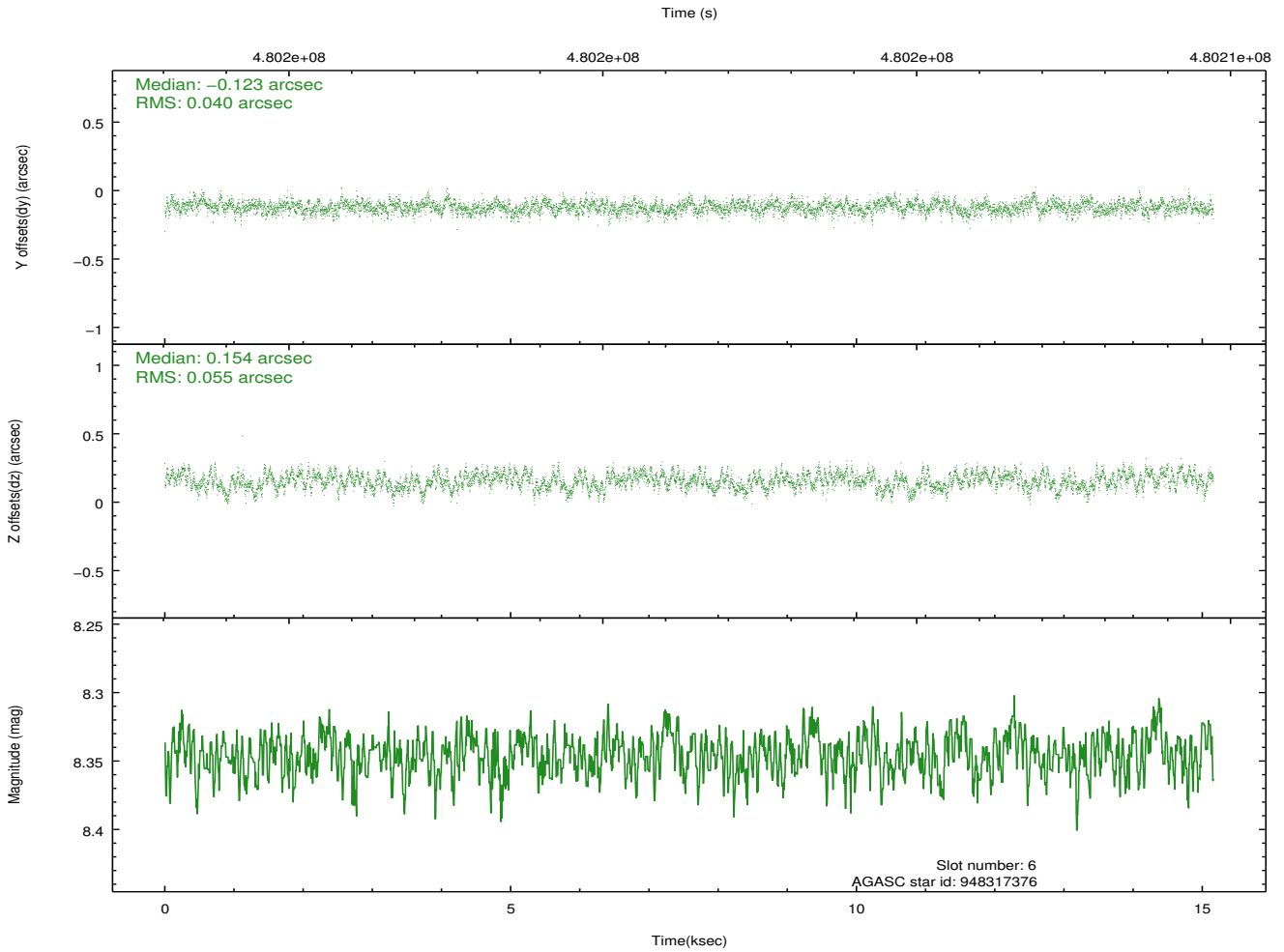
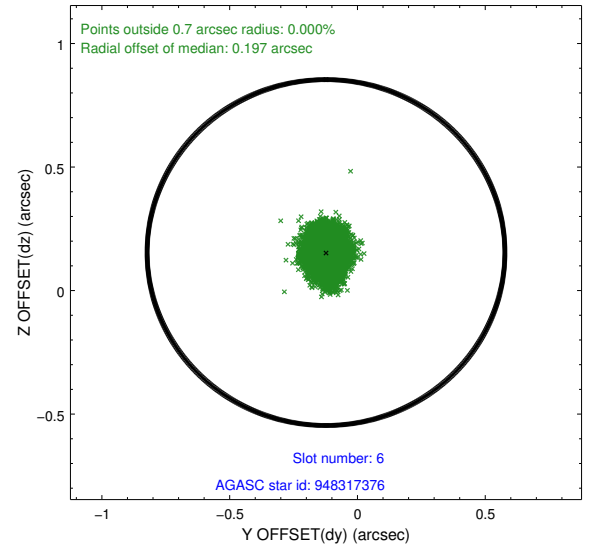
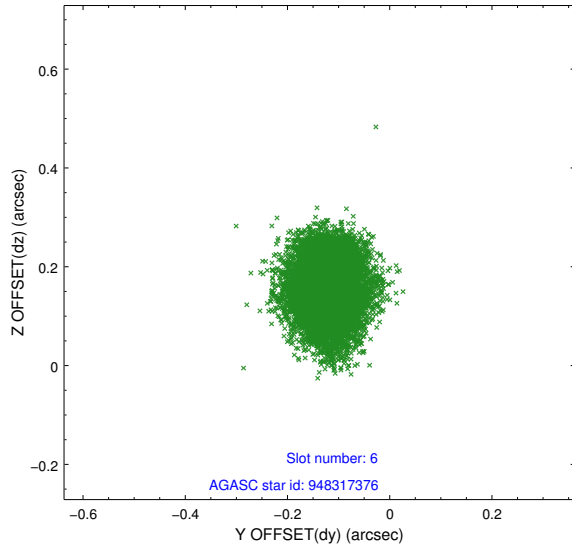
2.4.2 Slot 4



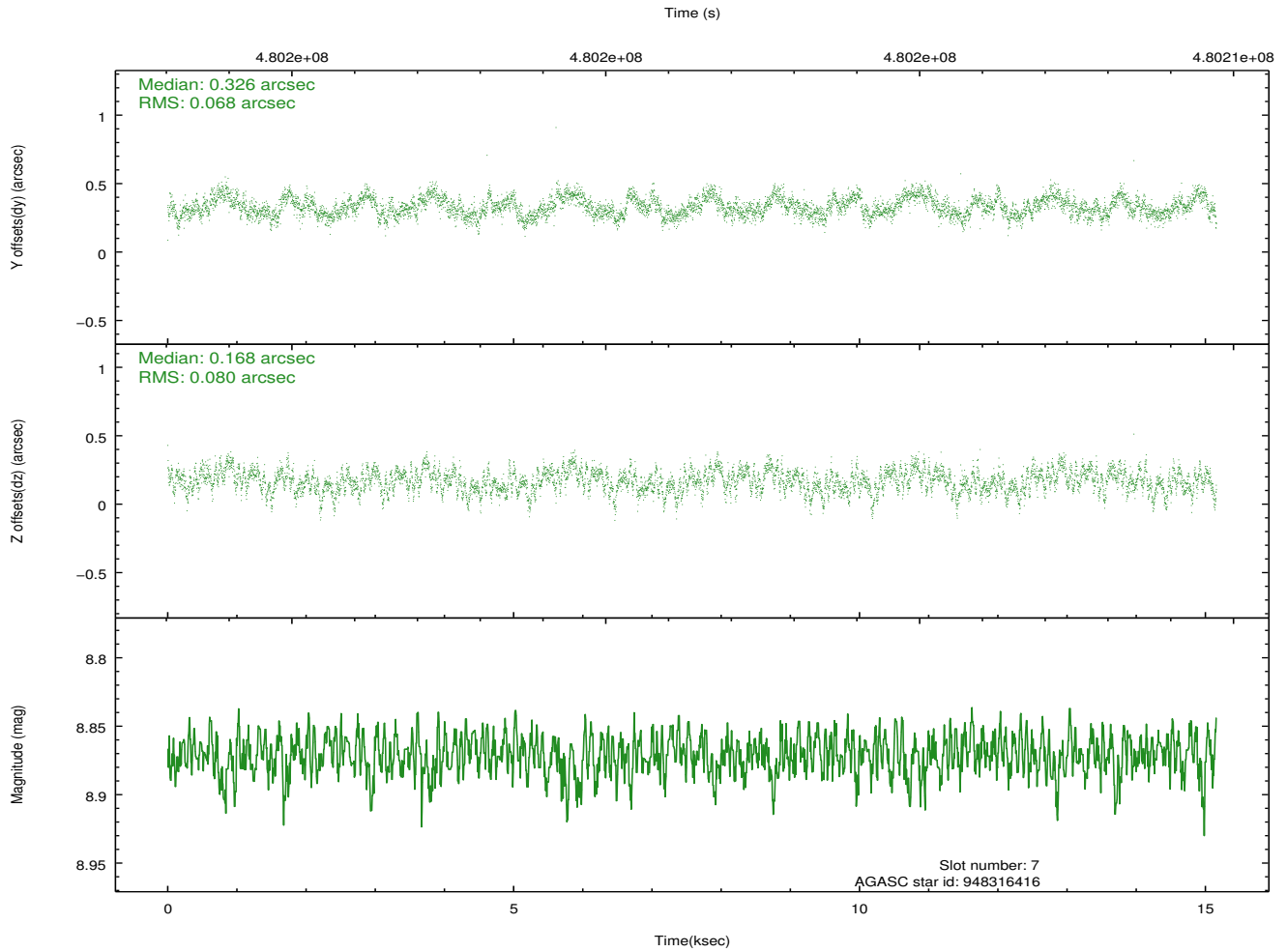
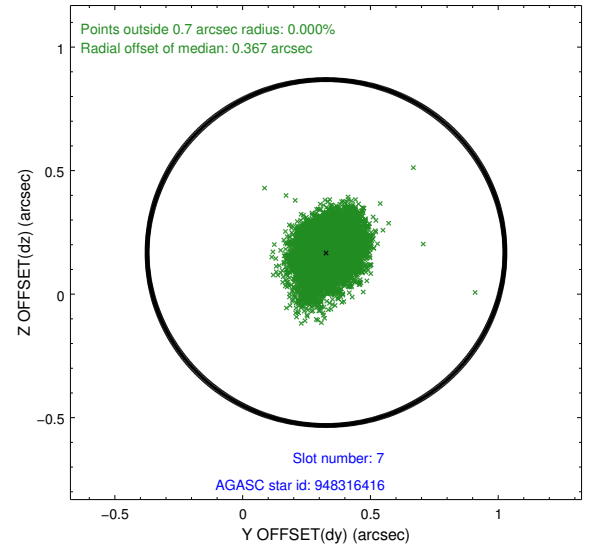
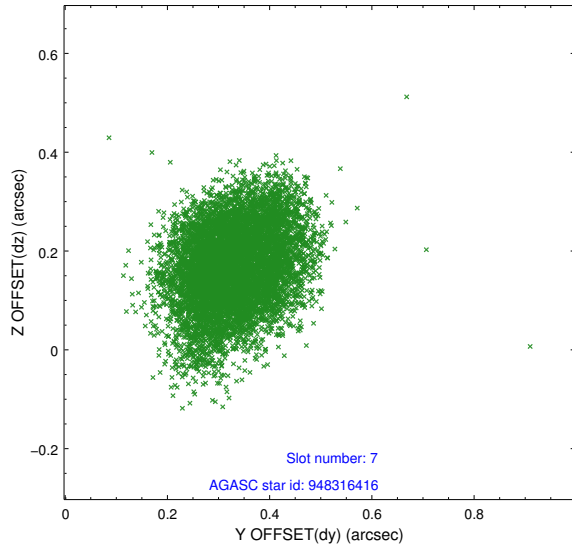
2.4.3 Slot 5



2.4.4 Slot 6

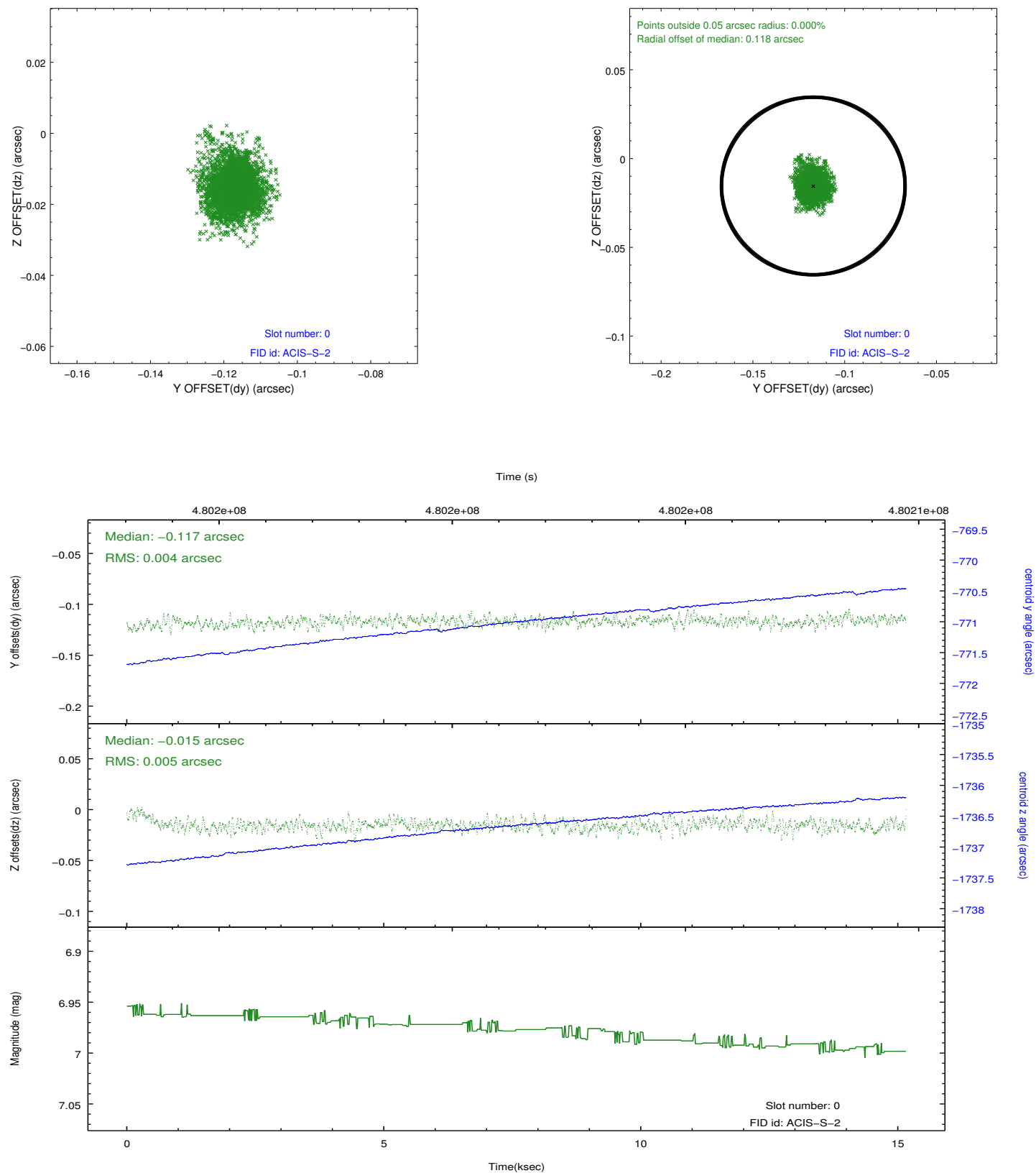


2.4.5 Slot 7

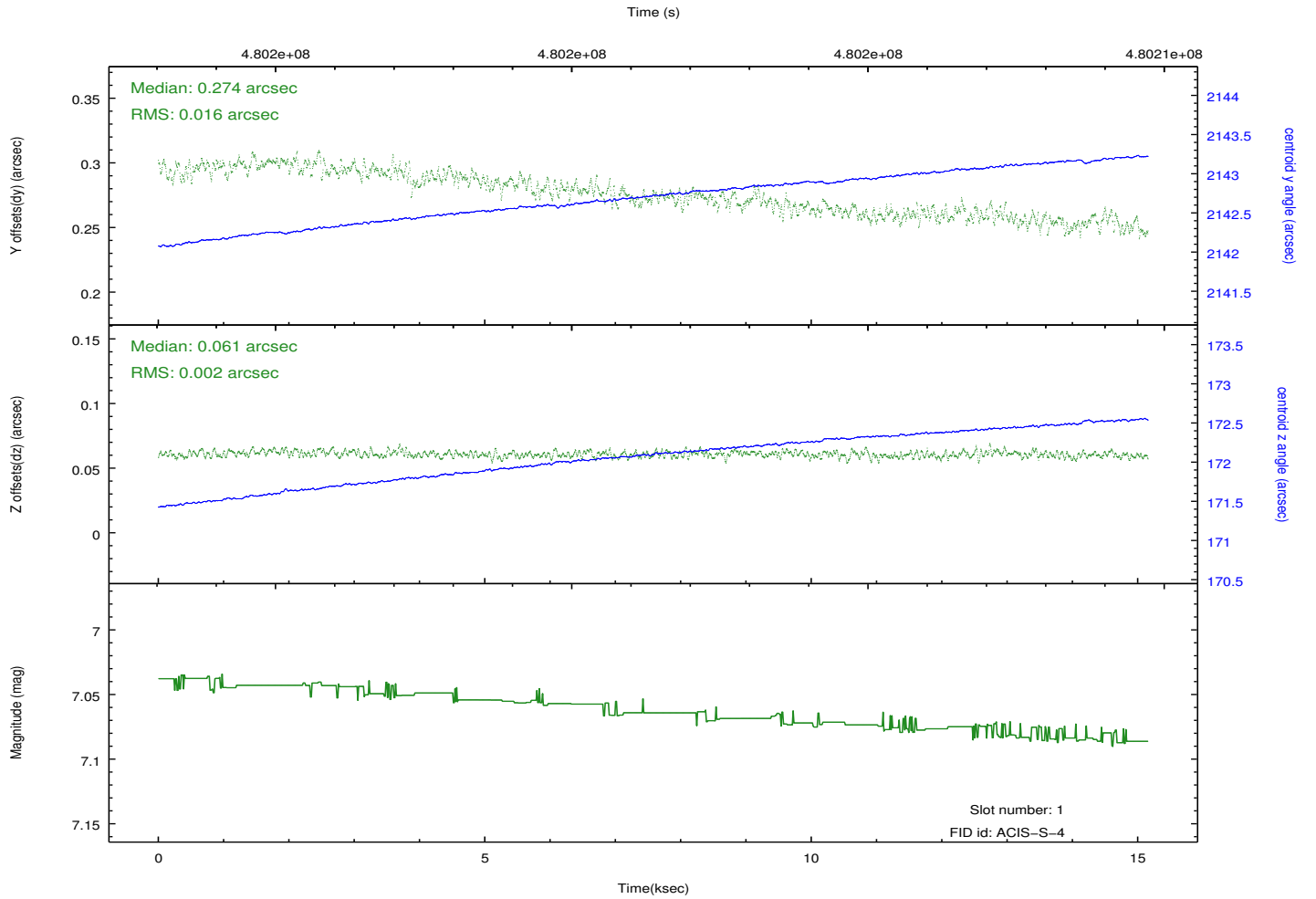
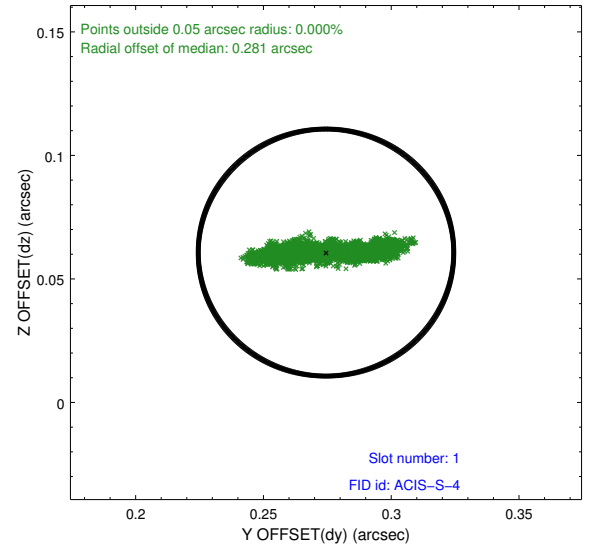
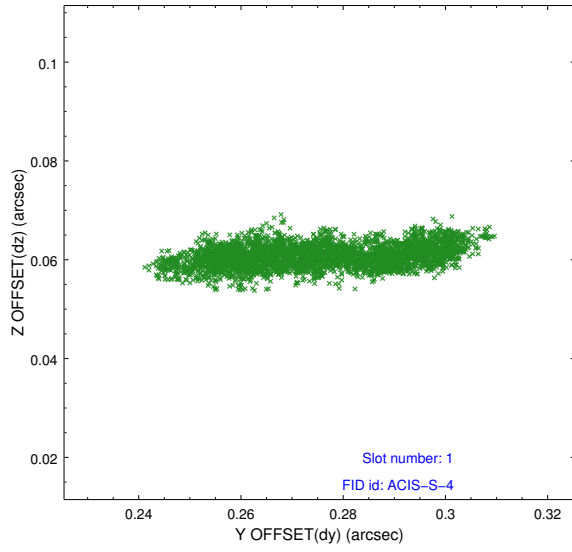


2.5 FID Slots

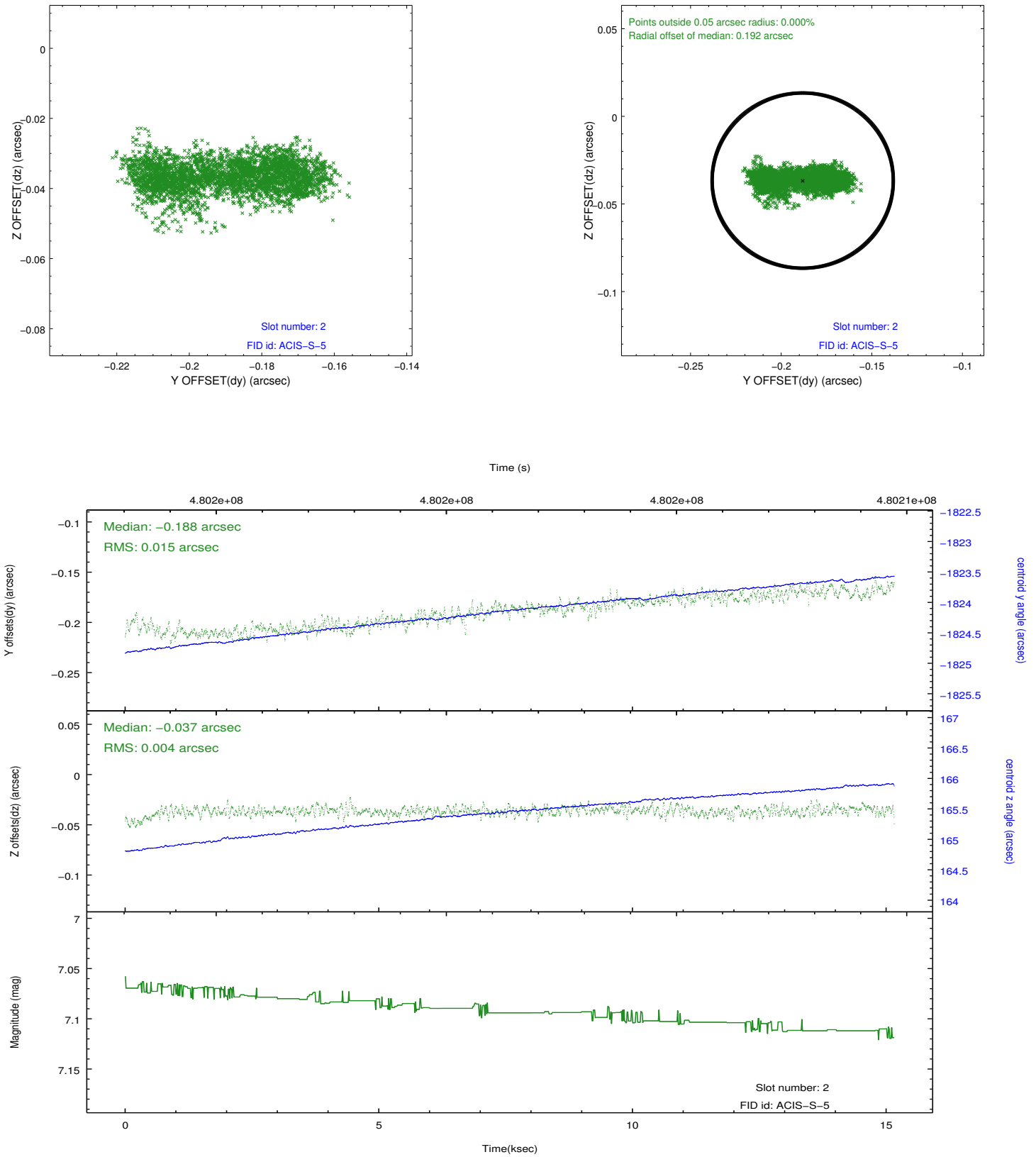
2.5.1 Slot 0



2.5.2 Slot 1



2.5.3 Slot 2



A Summary

A.1 Status

V&V Scientist	Beth Sundheim
V&V Date (YYYY-MM-DD)	2014.12.10
V&V Edition	1
V&V Disposition and Status	OK
V&V Charge Time	14.966399944305

A.2 Comments

These data have been reprocessed with new aspect alignment calibration files that correct small mean offsets (up to 0.4 arcsecs) and improve overall astrometric accuracy. The new calibration was determined using data from the time period being reprocessed and was performed using cross-correlation of X-ray sources with radio and optical counterparts.