

V&V Reference Report

L2 ASCDS Version : 10

Observation 15061 - L2 Version 2
Chandra X-Ray Center

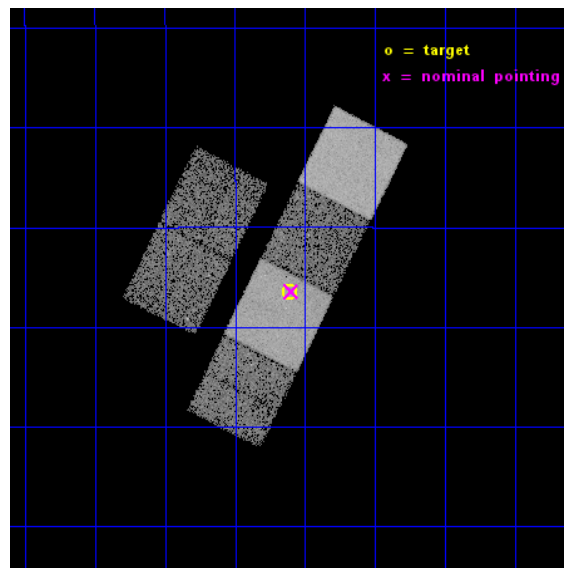
L2 Processing Date : Dec 3 2014

Contents

1	Front	2
2	OBI	3
2.1	OBI	3
2.1.1	Images	3
2.1.2	Bias	3
2.1.3	Parameters	4
2.1.4	Events	4
2.2	Compared Parameters	5
2.3	Aspect	6
2.4	Star Slots	9
2.4.1	Slot 3	9
2.4.2	Slot 4	10
2.4.3	Slot 5	11
2.4.4	Slot 6	12
2.4.5	Slot 7	13
2.5	FID Slots	14
2.5.1	Slot 0	14
2.5.2	Slot 1	15
2.5.3	Slot 2	16
A	Summary	17
A.1	Status	17
A.2	Comments	17

1 Front

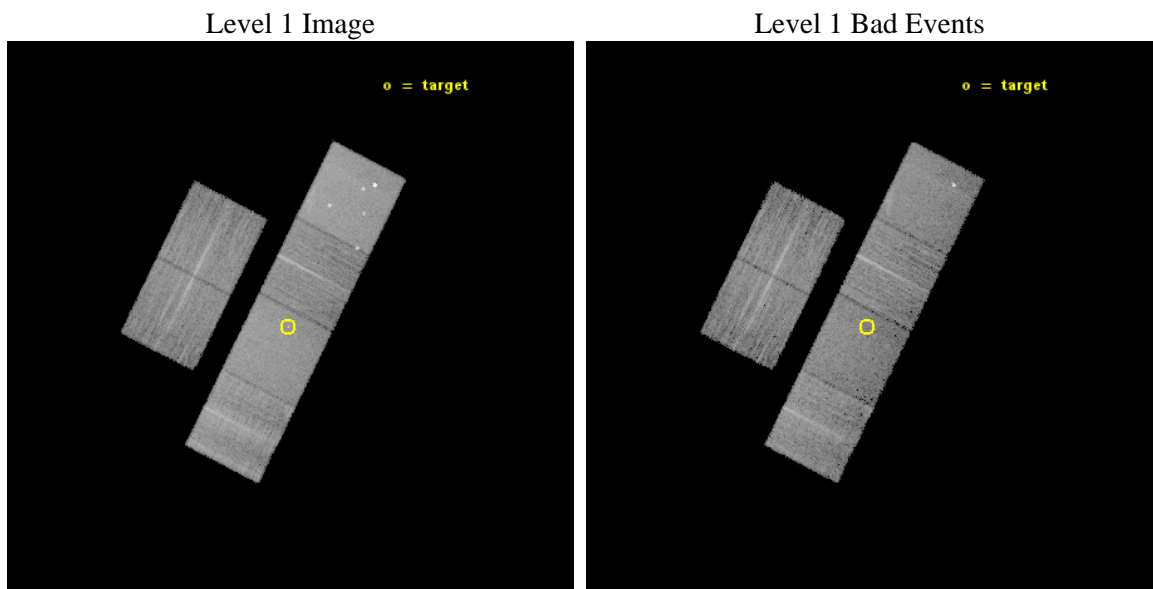
seq_num	702868	Sequence number
obs_id	15061	Observation id
title	C-GOALS: The Chandra-RBGS Survey of a Complete Sample of Major-Merger LIRGs	Proposal title
observer	Professor David Sanders	Principal investigator
object	NGC 0034	Source name
dtcycle	0	
cycle	P	events from which exps? Prim/Second/Both
ra_targ	2.7775	Observer's specified target RA [deg]
dec_targ	-12.1075	Observer's specified target Dec [deg]
ra_nom	2.7744506247997	Nominal RA [deg]
dec_nom	-12.107208046486	Nominal Dec [deg]
roll_nom	116.8371389478	Nominal Roll [deg]
revision	2	Processing version of data
ontime	14966.332131445	Sum of GTIs [s]
livetime	14776.819422354	Livetime [s]
ontime2	14966.373171449	Sum of GTIs [s]
ontime3	14966.209011436	Sum of GTIs [s]
ontime5	14963.050121069	Sum of GTIs [s]
ontime6	14966.250051439	Sum of GTIs [s]
ontime7	14966.332131445	Sum of GTIs [s]
ontime8	14966.167971432	Sum of GTIs [s]
l2events	126136	Number of level 2 events



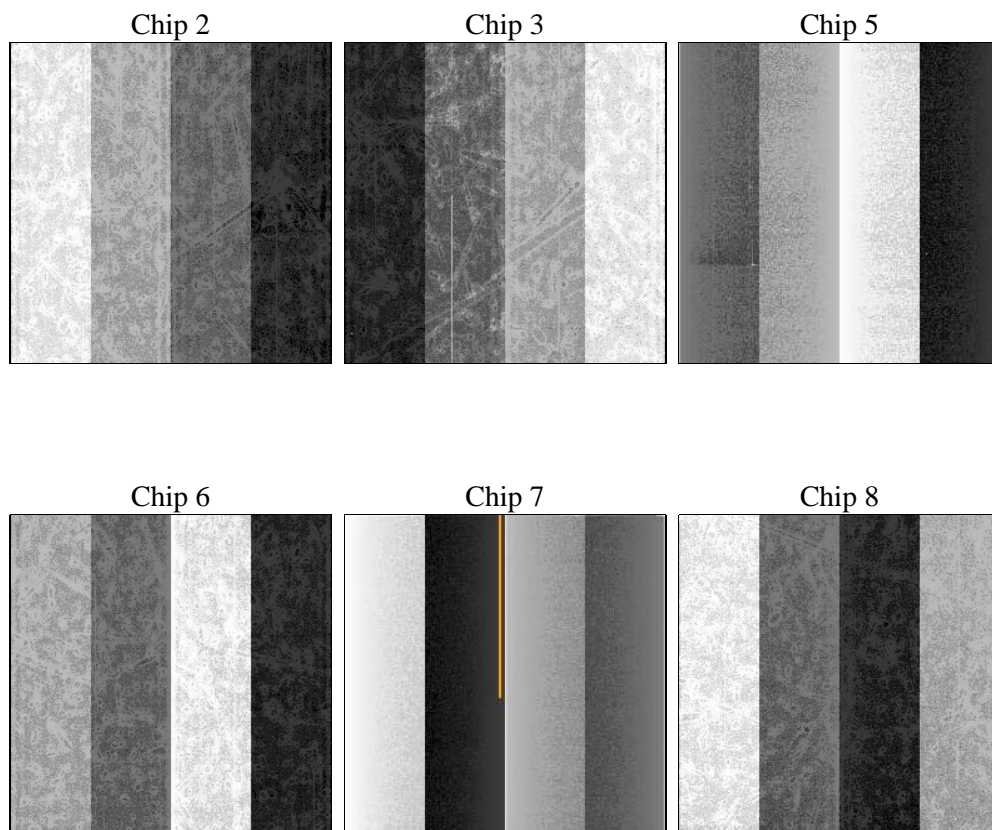
2 OBI

2.1 OBI

2.1.1 Images



2.1.2 Bias



2.1.3 Parameters

obi_num	0	Obi number	sched_exp_time	15000.000000	[s] Scheduled observation exposure time
ascdsver	10.3	Processing system revision	ontime	14966.332131445	Sum of GTIs [s]
caldsver	4.6.4	 	ontime2	14966.373171449	Sum of GTIs [s]
date	2014-12-03T11:53:49	Date and time of file creation	ontime3	14966.209011436	Sum of GTIs [s]
revision	2	Processing version of data	ontime5	14963.050121069	Sum of GTIs [s]
			ontime6	14966.250051439	Sum of GTIs [s]
			ontime7	14966.332131445	Sum of GTIs [s]
			ontime8	14966.167971432	Sum of GTIs [s]
			l1events	530296	Number of level 1 events

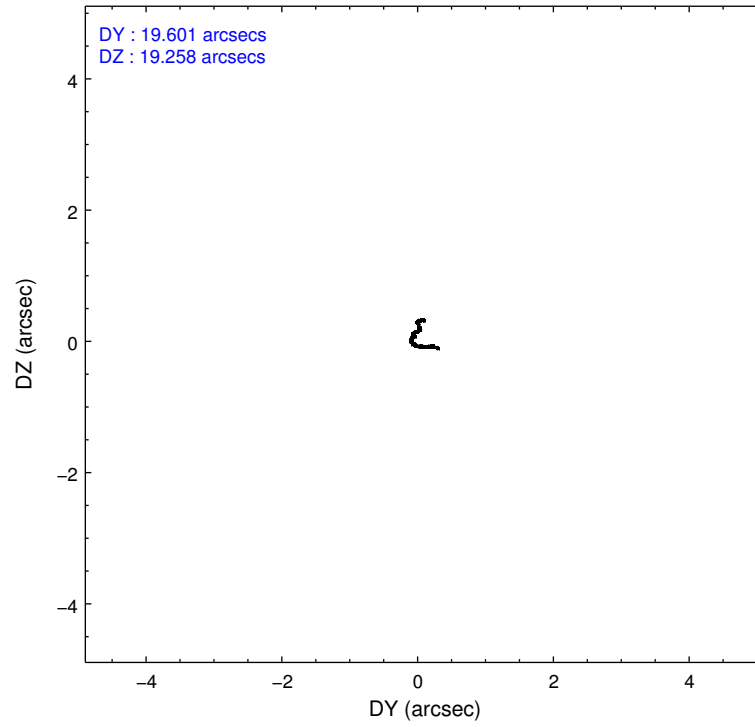
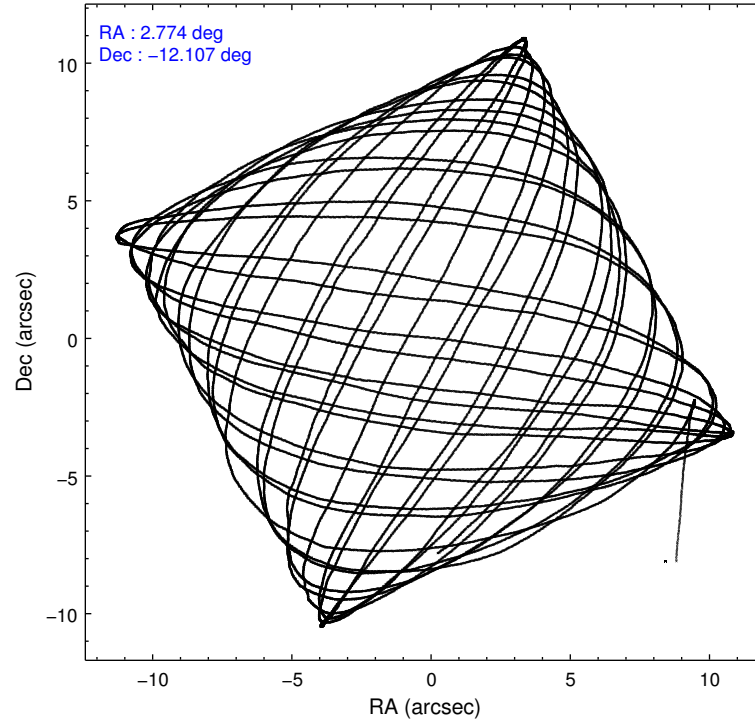
2.1.4 Events

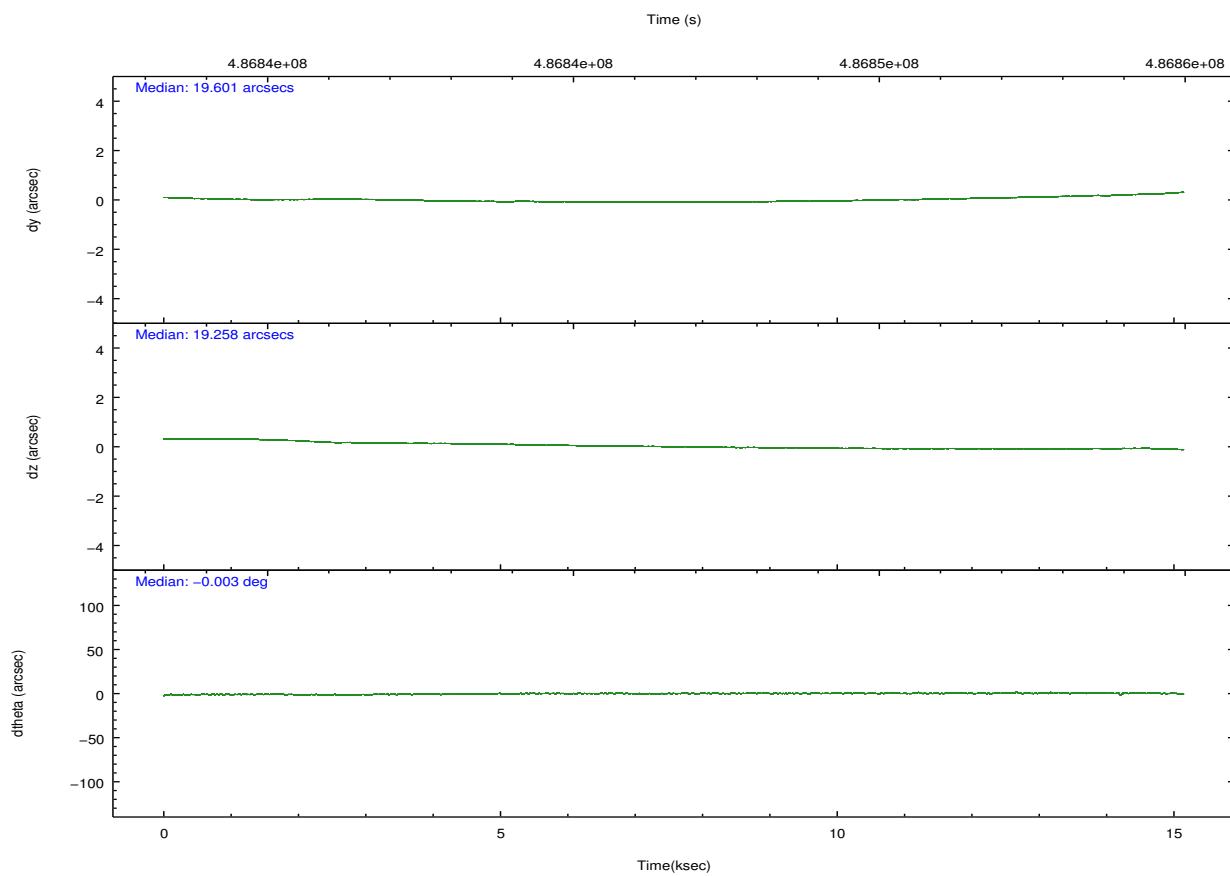
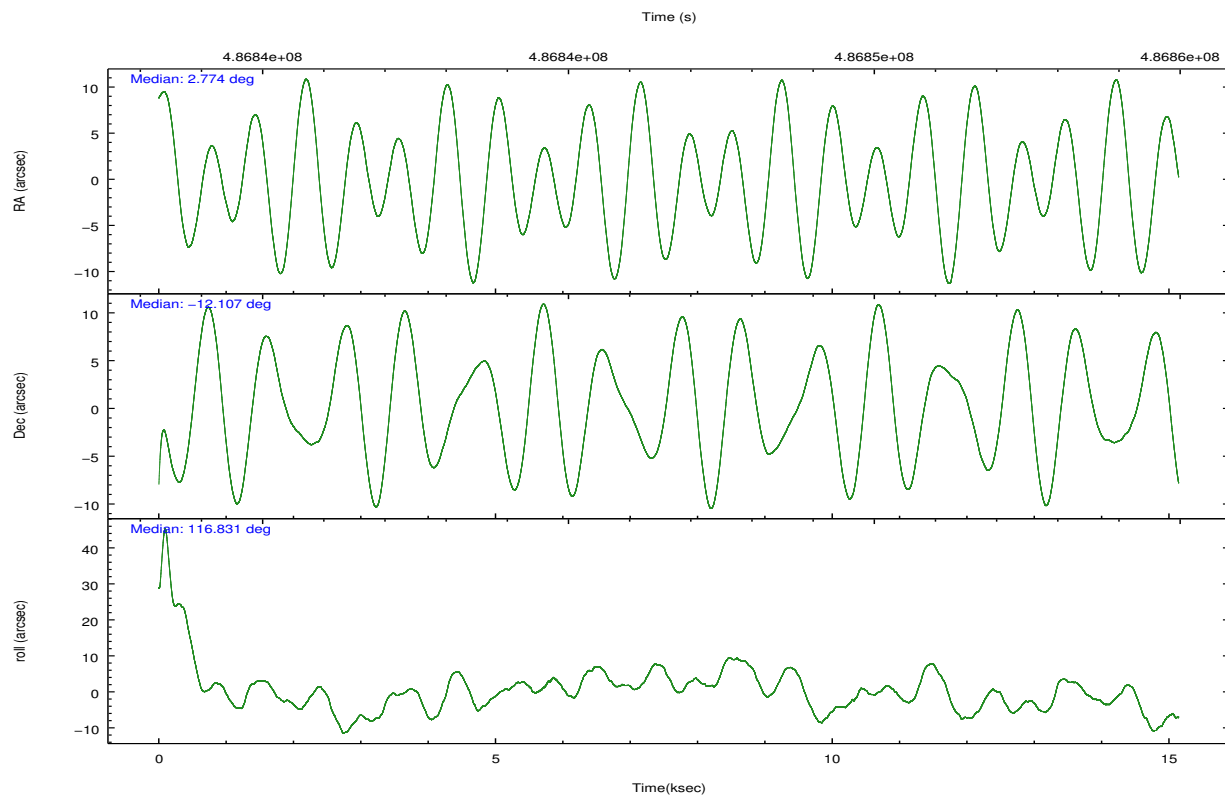
	ccd 2	ccd 3	ccd 5	ccd 6	ccd 7	ccd 8		ccd 2	ccd 3	ccd 5	ccd 6	ccd 7	ccd 8
level 1 events	70851	68124	125238	71633	97059	97391	grade 0 events	2988	2787	7532	3096	3979	7805
rejected events	62486	60263	63429	62838	53961	71104		4%	4%	6%	4%	4%	8%
rejected %	88%	88%	50%	87%	55%	73%	grade 1 events	43	37	257	37	124	71
								0%	0%	0%	0%	0%	0%
							grade 2 events	2058	1763	19873	1955	8710	6316
								2%	2%	15%	2%	8%	6%
							grade 3 events	803	871	2063	838	3793	2557
								1%	1%	1%	1%	3%	2%
							grade 4 events	905	867	1877	890	3718	2393
								1%	1%	1%	1%	3%	2%
							grade 5 events	3256	3689	9107	3823	10079	5334
								4%	5%	7%	5%	10%	5%
							grade 6 events	1612	1576	30479	2017	22907	7218
								2%	2%	24%	2%	23%	7%
							grade 7 events	59186	56534	54050	58977	43749	65697
								83%	82%	43%	82%	45%	67%

2.2 Compared Parameters

Parameter	Planned	Actual	Parameter	Planned	Actual
Instrument	ACIS	ACIS	Obspar format version number	7	7
Detector	ACIS-235678	ACIS-235678	Obspar file type	PREDICTED	ACTUAL
Grating	NONE	NONE	Obspar update status	NONE	UPDATED
Data mode	VFAINT	VFAINT	CCD I0 on	N	N
Observation mode	POINTING	POINTING	CCD I1 on	N	N
[deg] Pointing RA	2.798035	2.774450624799663	CCD I2 on	O2	Y
[deg] Pointing Dec	-12.121841	-12.10720804648611	CCD I3 on	Y	Y
[deg] Pointing Roll	116.685482	116.8371389477965	CCD S0 on	N	N
[mm] SIM focus pos	-0.684267	-0.6828225247311905	CCD S1 on	O1	Y
[mm] SIM defocus	0	0.001444936568705701	CCD S2 on	Y	Y
[mm] SIM translation stage pos	-190.132523	-190.1425803651734	CCD S3 on	Y	Y
[mm] SIM translation stage offset	0	0.01005778216563158	CCD S4 on	Y	Y
[s] Observation start time (MET)	486839217.184000	486838163.4939	CCD S5 on	N	N
Observation start date	2013-06-05T17:05:50	2013-06-05T16:49:23	Number of optional ACIS chips dropped	0	0
[s] Observation end time (MET)	486854217.184000	486855158.50732	On-chip summing requested	N	N
Observation end date	2013-06-05T21:15:50	2013-06-05T21:32:38	Subarray requested	NONE	NONE
Read mode	TIMED	TIMED	Alternating exposures requested	N	N
			[s] Primary exposure time	0.000000	3.2

2.3 Aspect



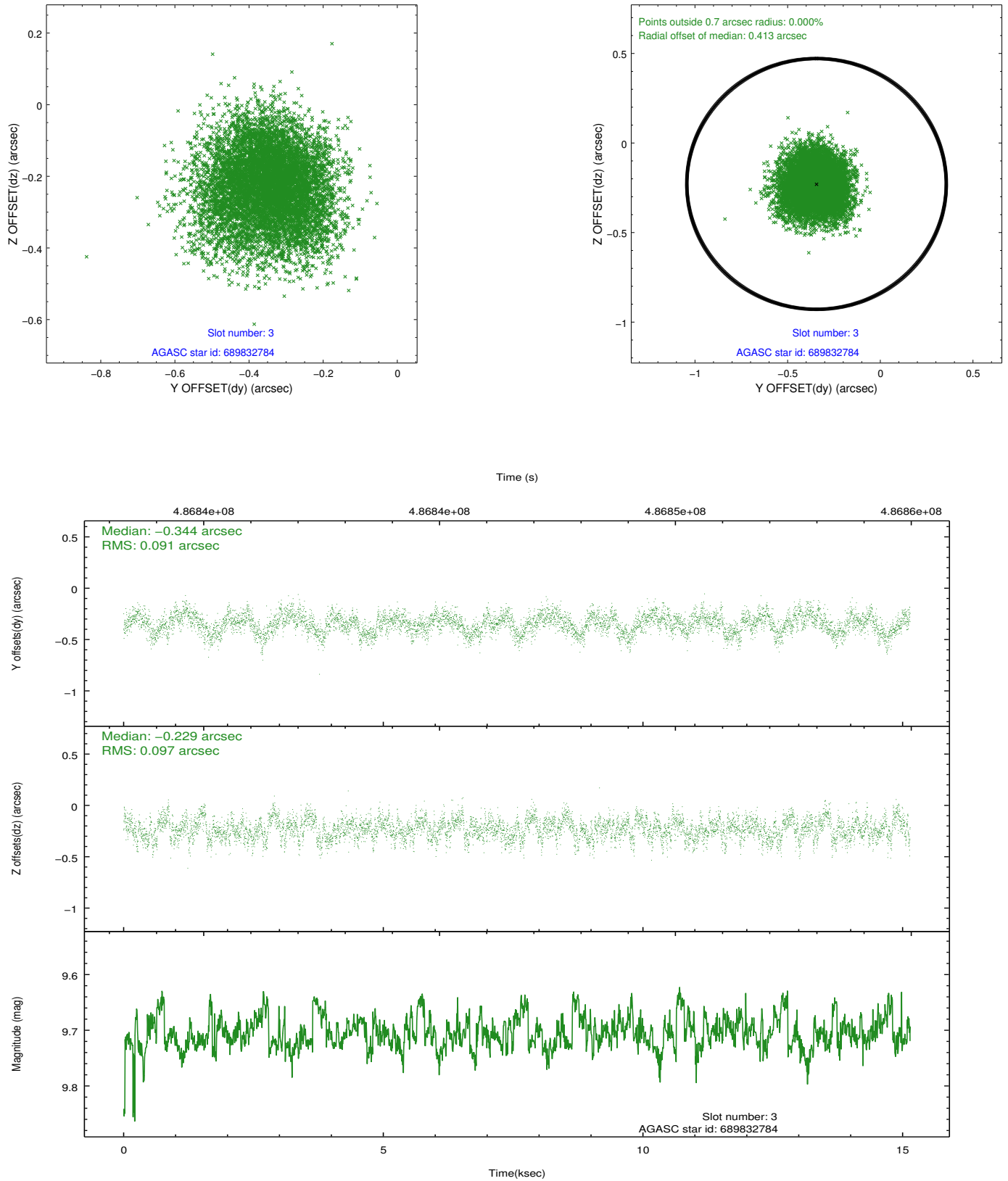


Slot Statistics

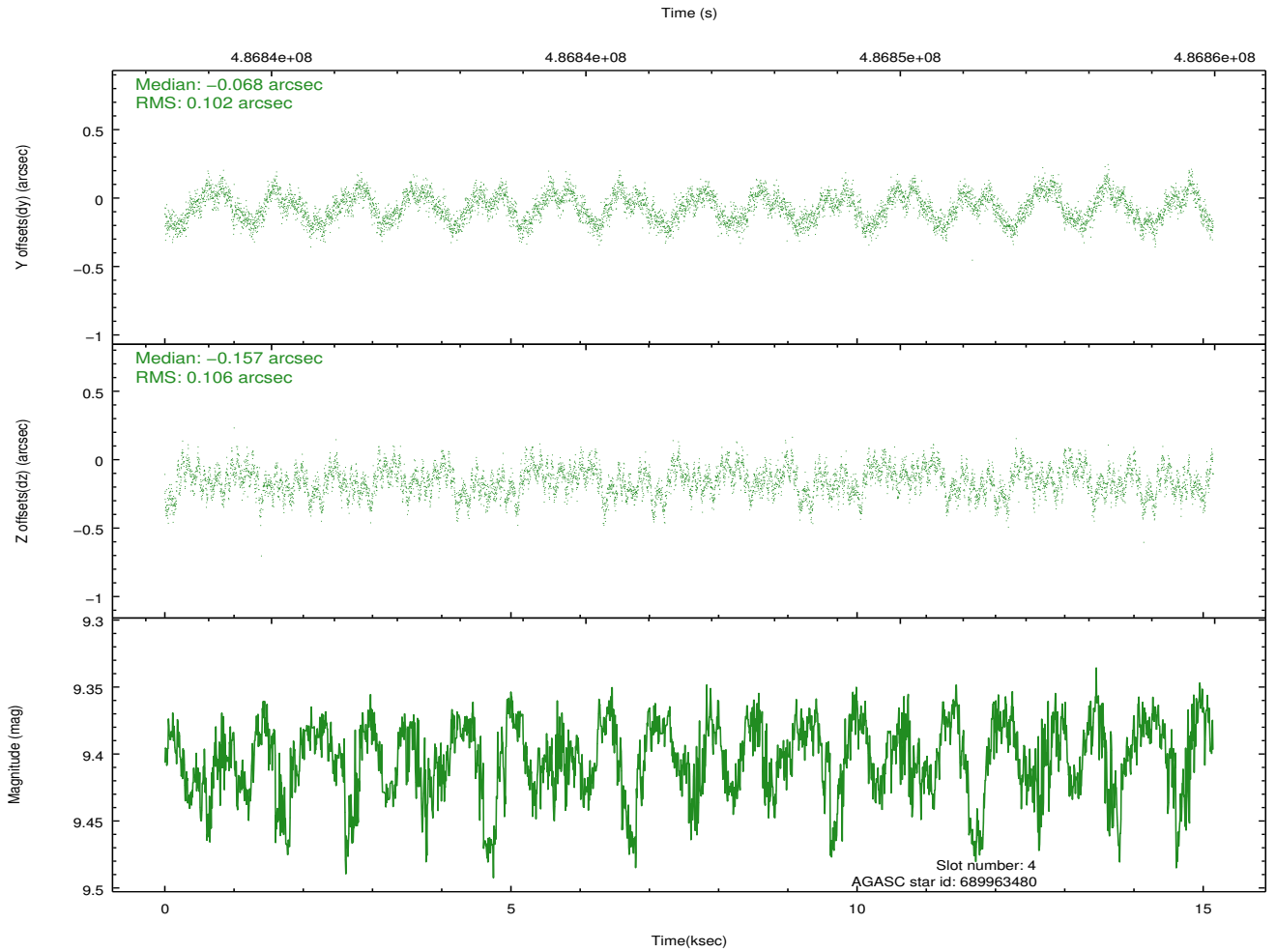
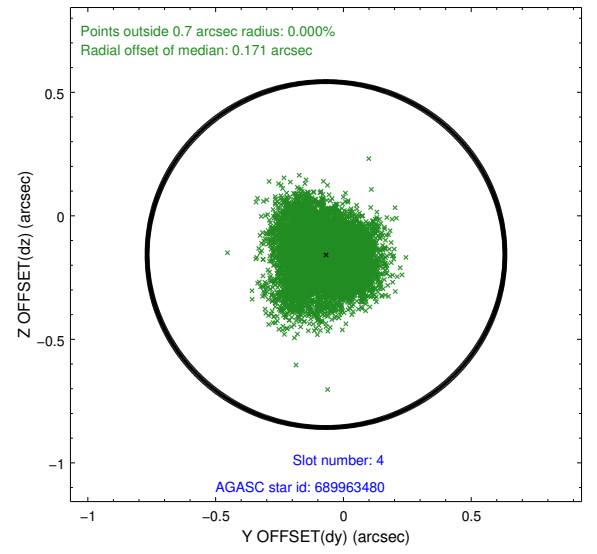
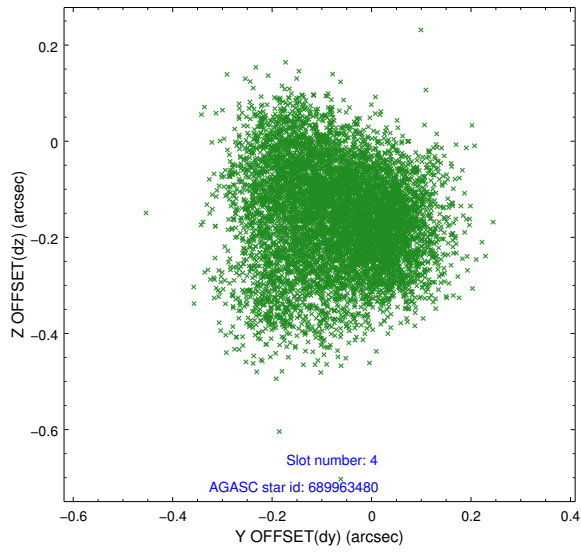
slot	status	used	id	mag	n_pts	med_dy	med_dz	dr1	dr2	ra	dec	mean_y	mean_z
0	FID		ACIS-S-2	6.94	3693	-0.113	-0.016	0.008	0.012	0.000000	0.000000	-772.84	-1740.75
1	FID		ACIS-S-4	7.02	3694	0.225	0.059	0.006	0.010	0.000000	0.000000	2140.66	167.46
2	FID		ACIS-S-5	7.04	3694	-0.143	-0.034	0.008	0.013	0.000000	0.000000	-1825.31	161.42
3	GUIDE	used	689832784	9.71	7351	-0.344	-0.229	0.144	0.228	2.367500	-12.035198	958.23	1215.21
4	GUIDE	used	689963480	9.40	7381	-0.068	-0.157	0.159	0.245	2.567776	-12.395481	-516.78	1166.10
5	GUIDE	used	689963952	9.41	7357	0.239	0.276	0.111	0.181	3.561181	-12.319722	-1844.68	-2076.10
6	GUIDE	used	689964000	8.53	7386	-0.213	-0.239	0.117	0.179	2.596033	-11.785867	1399.64	92.65
7	GUIDE	used	689964056	9.98	7357	0.391	0.347	0.227	0.354	3.585698	-12.463067	-2343.84	-1920.12

2.4 Star Slots

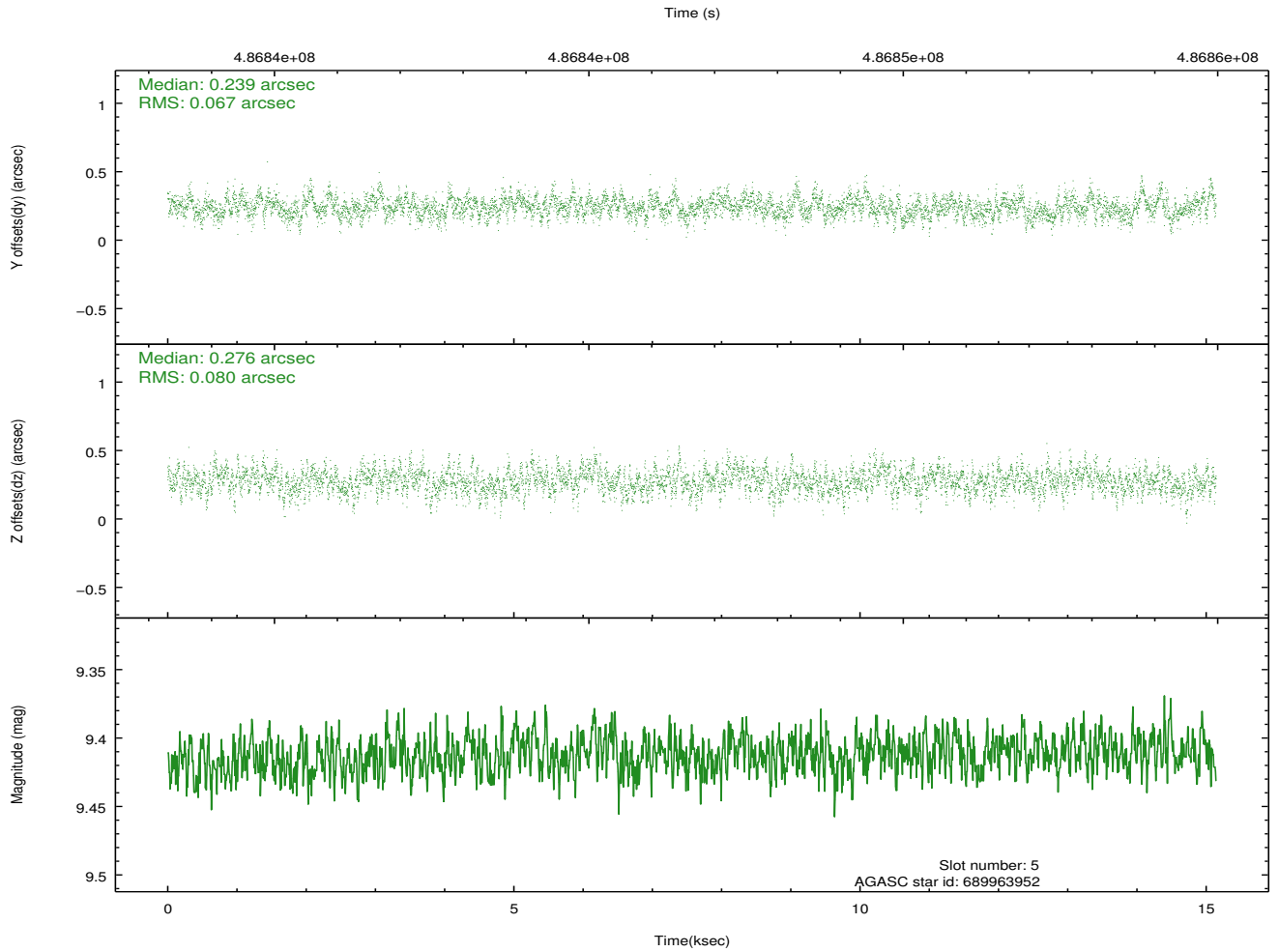
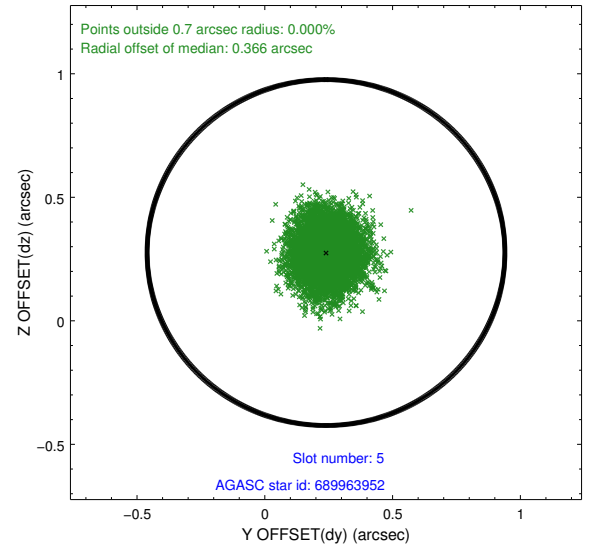
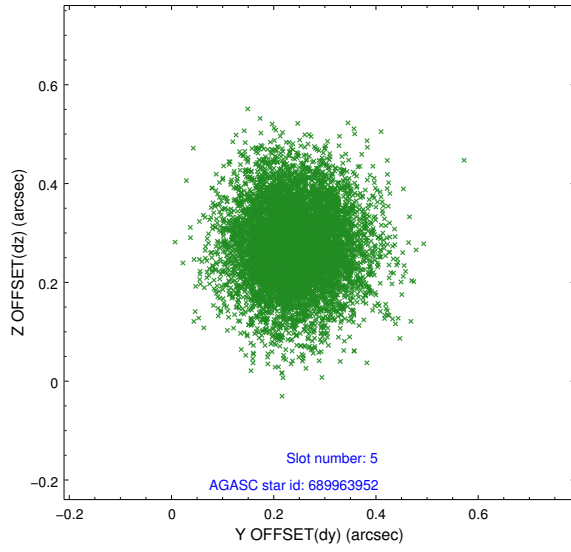
2.4.1 Slot 3



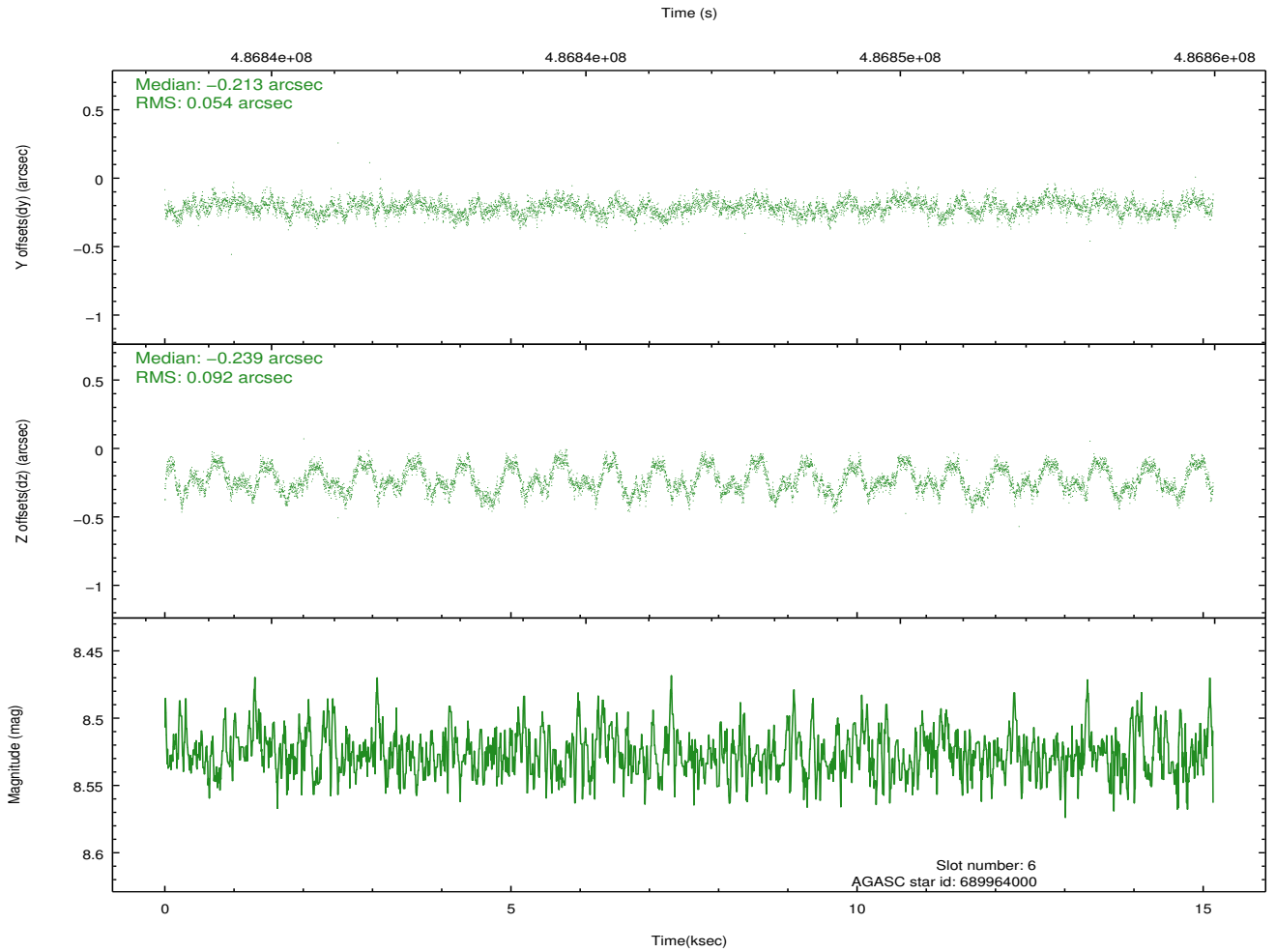
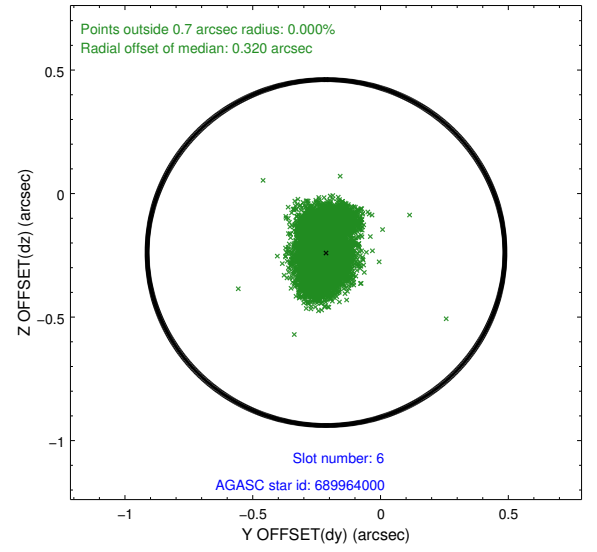
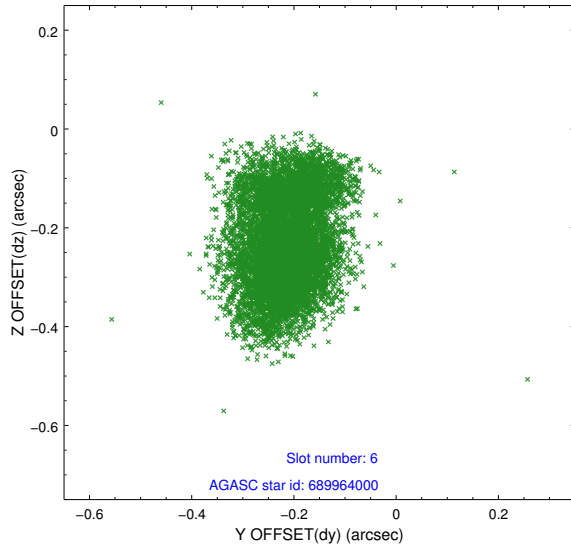
2.4.2 Slot 4



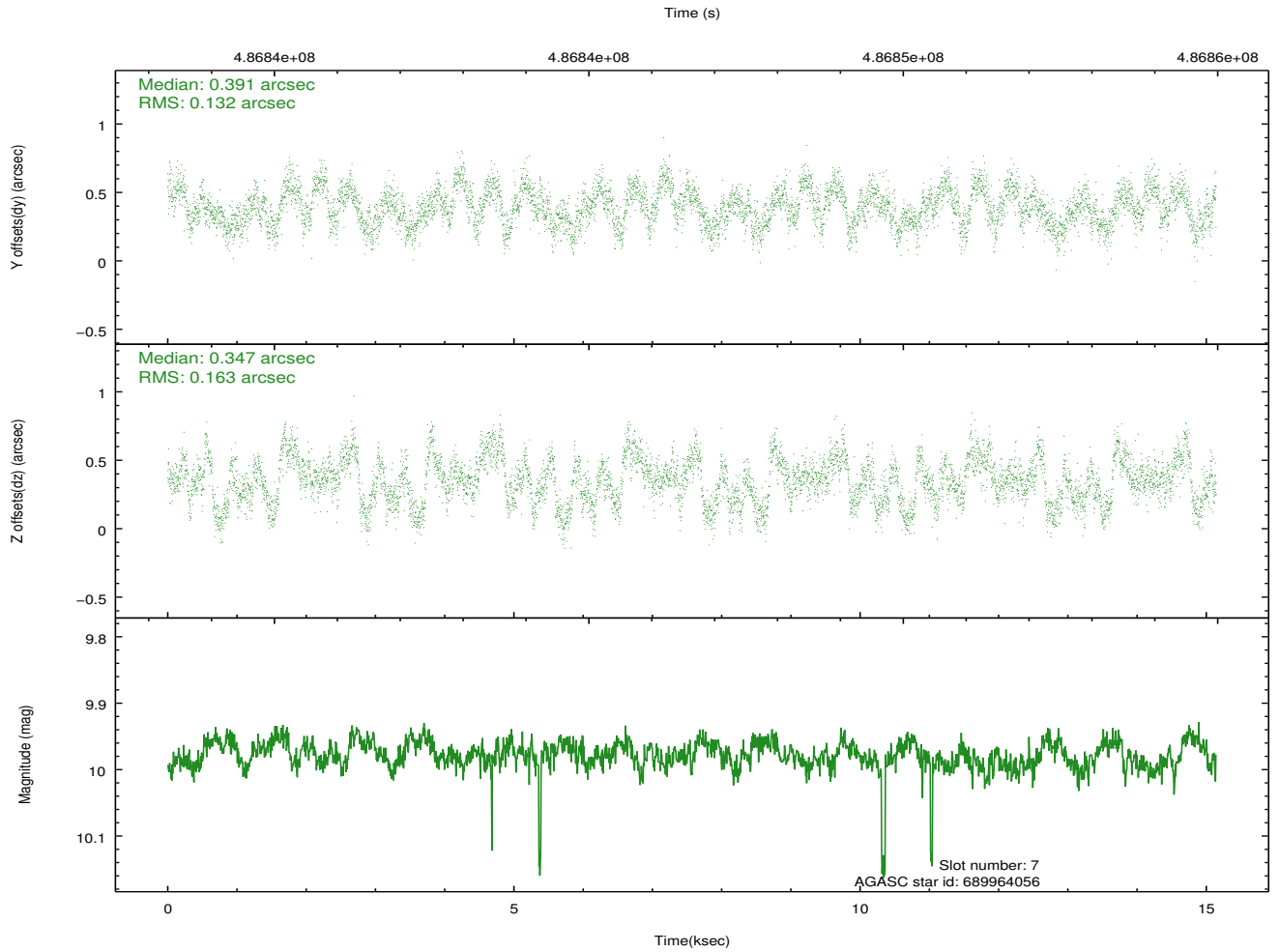
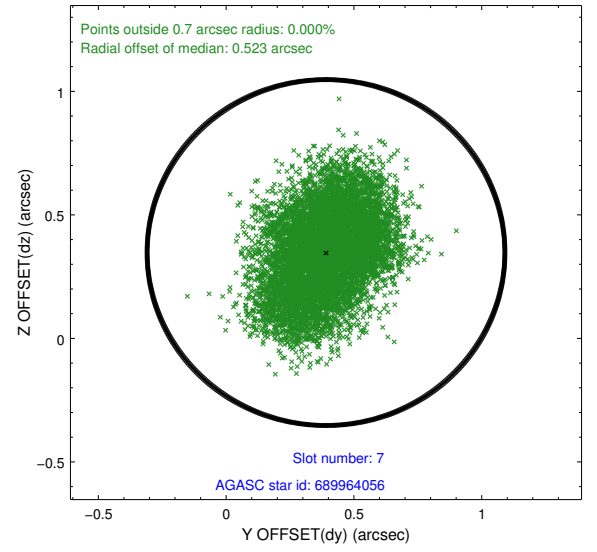
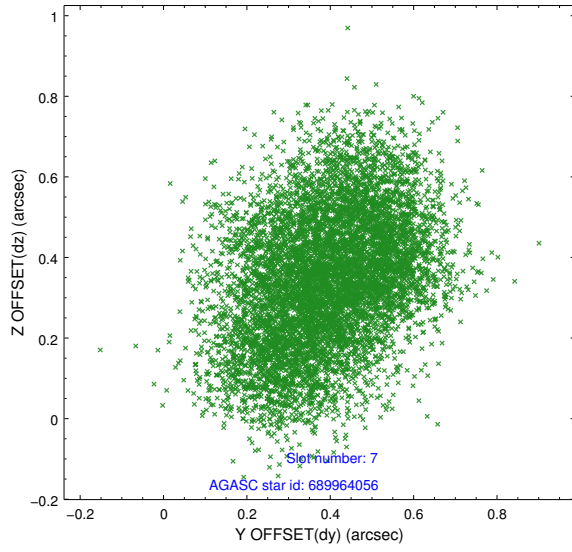
2.4.3 Slot 5



2.4.4 Slot 6

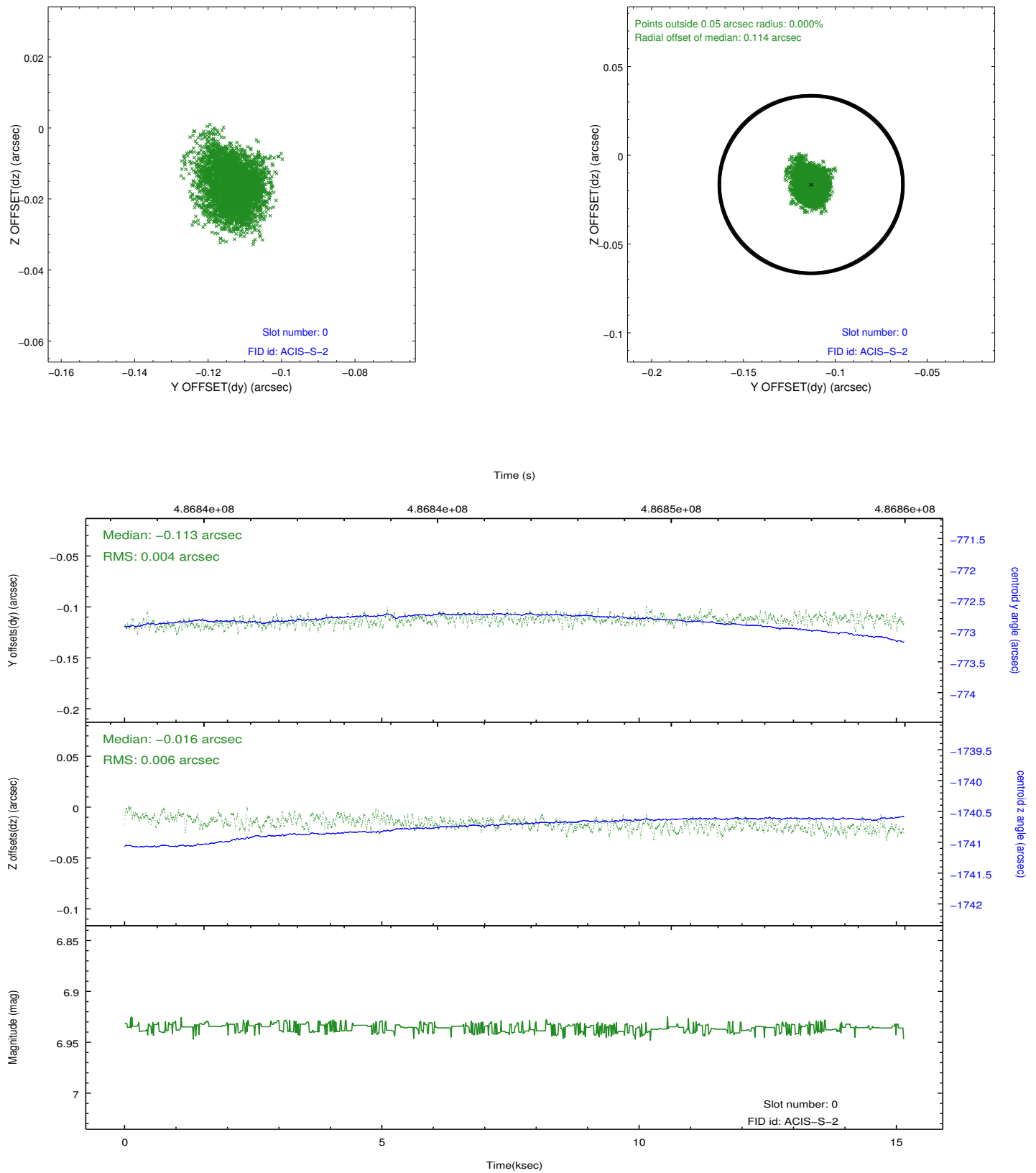


2.4.5 Slot 7

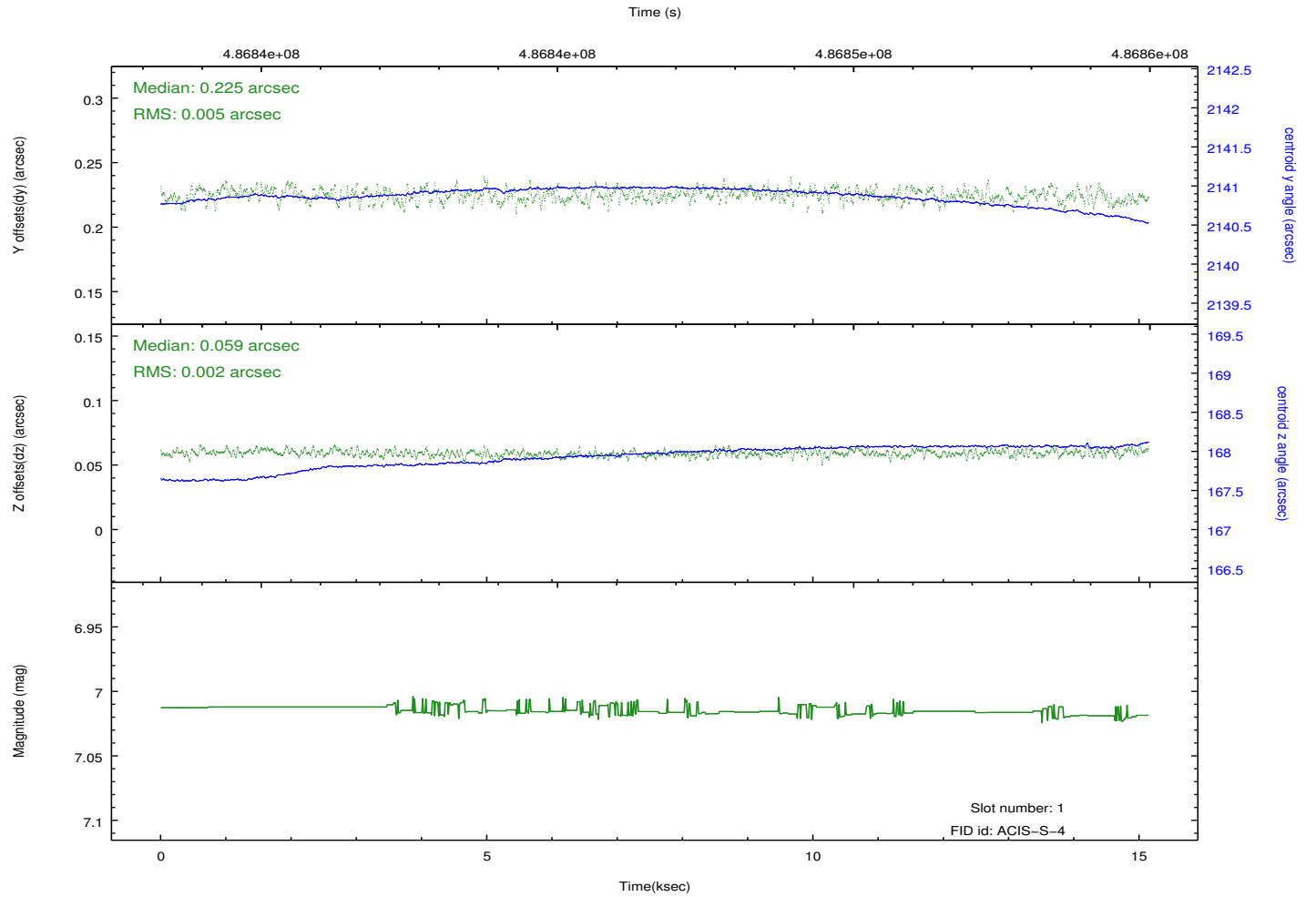
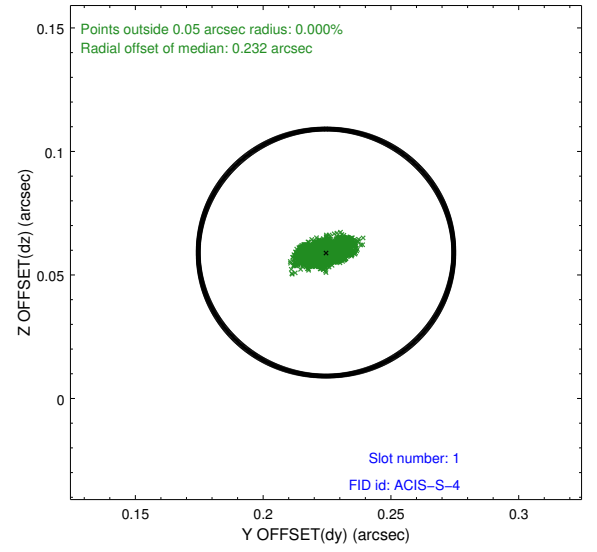
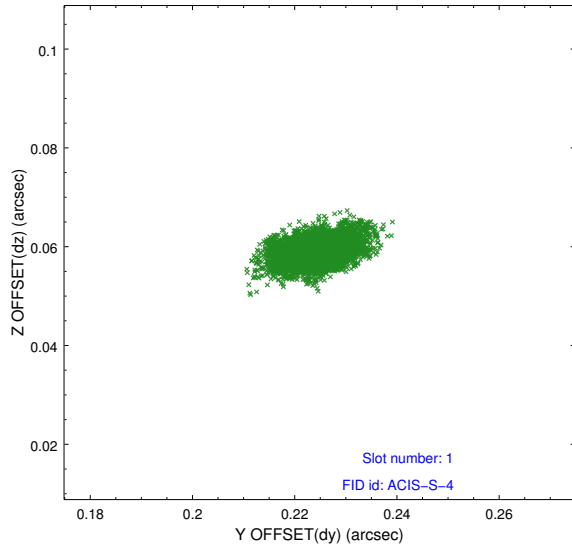


2.5 FID Slots

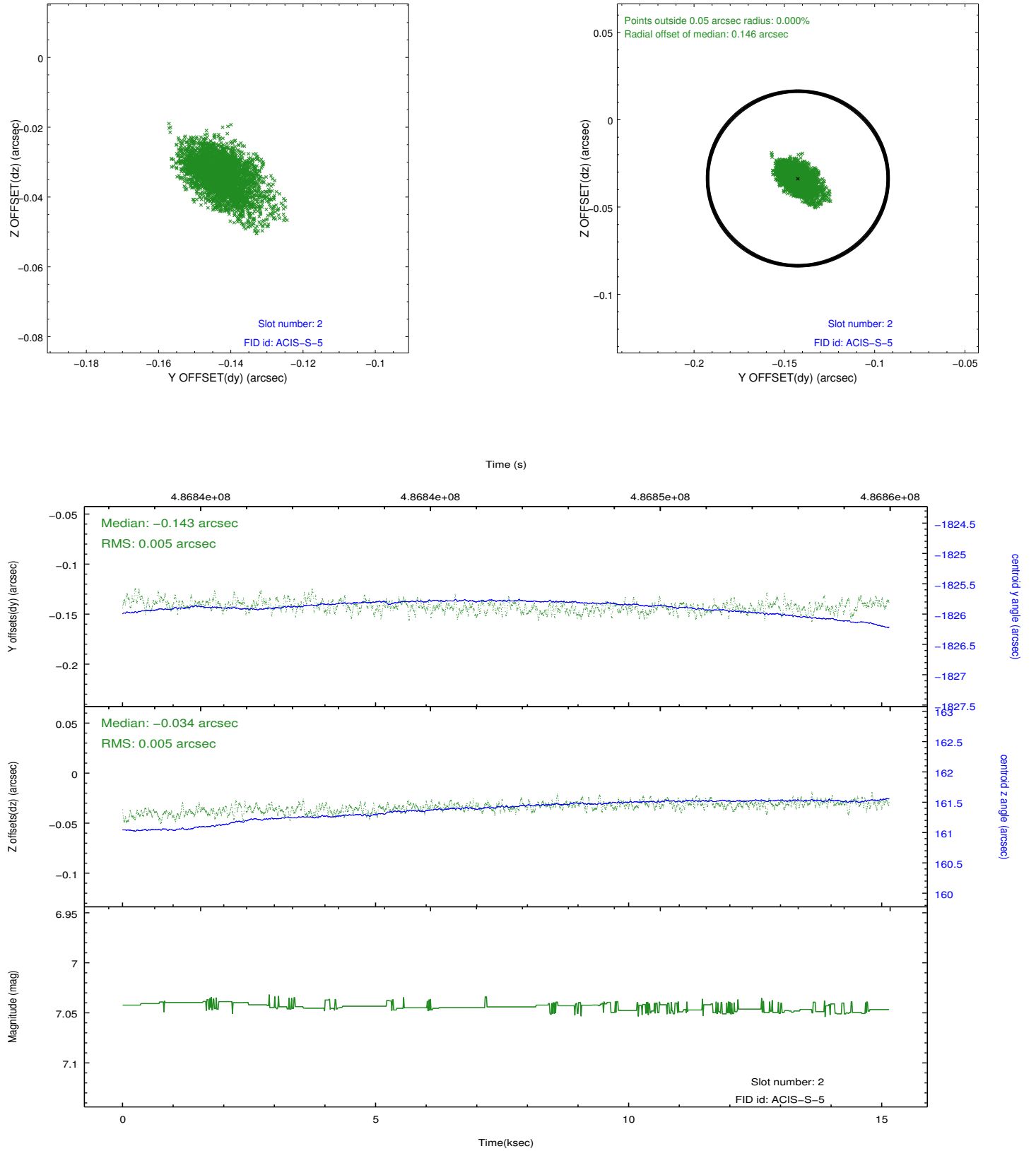
2.5.1 Slot 0



2.5.2 Slot 1



2.5.3 Slot 2



A Summary

A.1 Status

V&V Scientist	Jen Lauer
V&V Date (YYYY-MM-DD)	2014.12.11
V&V Edition	1
V&V Disposition and Status	OK
V&V Charge Time	14.966332131445

A.2 Comments

These data have been reprocessed with new aspect alignment calibration files that correct small mean offsets (up to 0.4 arcsecs) and improve overall astrometric accuracy. The new calibration was determined using data from the time period being reprocessed and was performed using cross-correlation of X-ray sources with radio and optical counterparts.