

V&V Reference Report

L2 ASCDS Version : 8.5.1.1

Observation 15059 - L2 Version 2
Chandra X-Ray Center

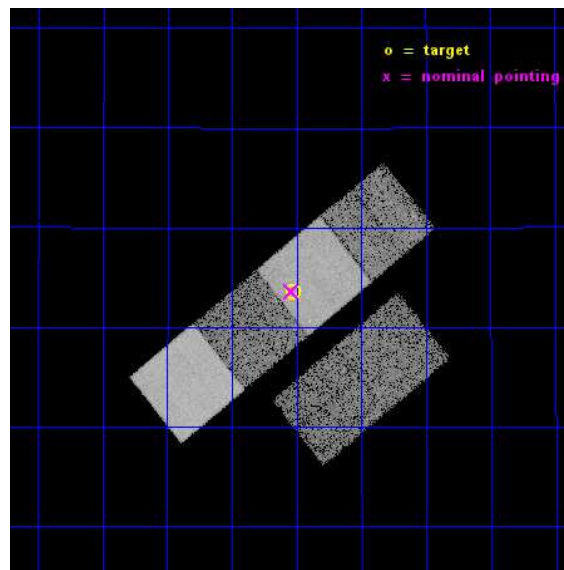
L2 Processing Date : Dec 1 2014

Contents

1	Front	2
2	OBI	3
2.1	OBI	3
2.1.1	Images	3
2.1.2	Bias	3
2.1.3	Parameters	4
2.1.4	Events	4
2.2	Compared Parameters	5
2.3	Aspect	6
2.4	Star Slots	9
2.4.1	Slot 3	9
2.4.2	Slot 4	10
2.4.3	Slot 5	11
2.4.4	Slot 6	12
2.4.5	Slot 7	13
2.5	FID Slots	14
2.5.1	Slot 0	14
2.5.2	Slot 1	15
2.5.3	Slot 2	16
A	Summary	17
A.1	Status	17
A.2	Comments	17

1 Front

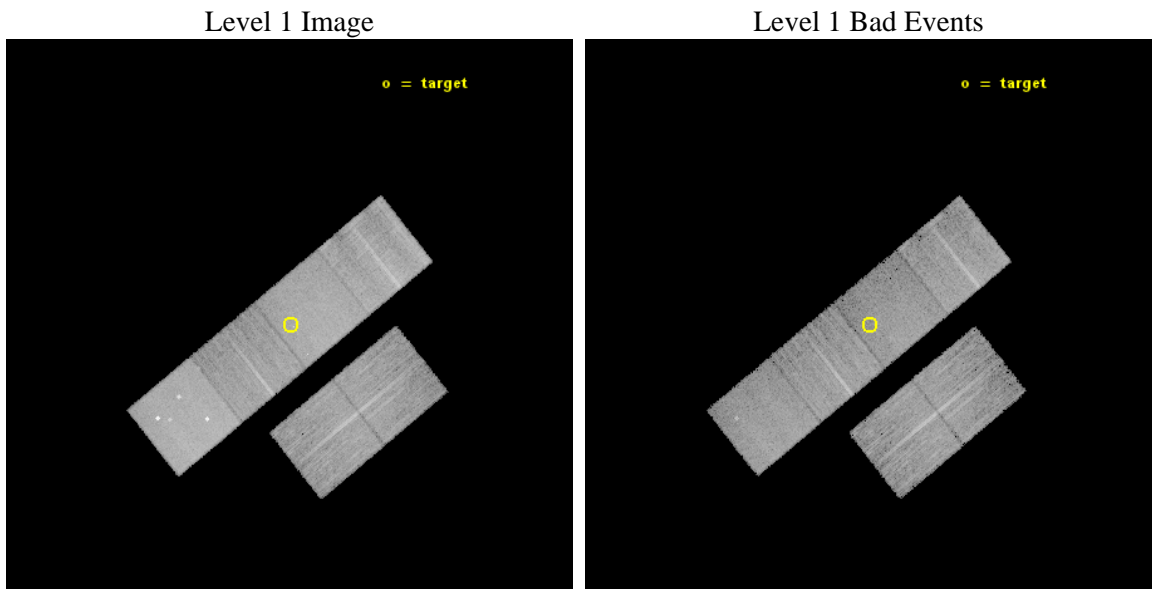
seq_num	702866	Sequence number
obs_id	15059	Observation id
title	C-GOALS: The Chandra-RBGS Survey of a Complete Sample of Major-Merger LIRGs	Proposal title
observer	Professor David Sanders	Principal investigator
object	IC 5298	Source name
dtcycle	0	
cycle	P	events from which exps? Prim/Second/Both
ra_targ	349.007083	Observer's specified target RA [deg]
dec_targ	25.559167	Observer's specified target Dec [deg]
ra_nom	349.01028867824	Nominal RA [deg]
dec_nom	25.560142089969	Nominal Dec [deg]
roll_nom	320.88831778137	Nominal Roll [deg]
revision	2	Processing version of data
ontime	14968.371201813	Sum of GTIs [s]
livetime	14778.832672785	Livetime [s]
ontime2	14968.412241817	Sum of GTIs [s]
ontime3	14965.00711149	Sum of GTIs [s]
ontime5	14968.33016181	Sum of GTIs [s]
ontime6	14968.289121807	Sum of GTIs [s]
ontime7	14968.371201813	Sum of GTIs [s]
ontime8	14964.966071427	Sum of GTIs [s]
l2events	144164	Number of level 2 events



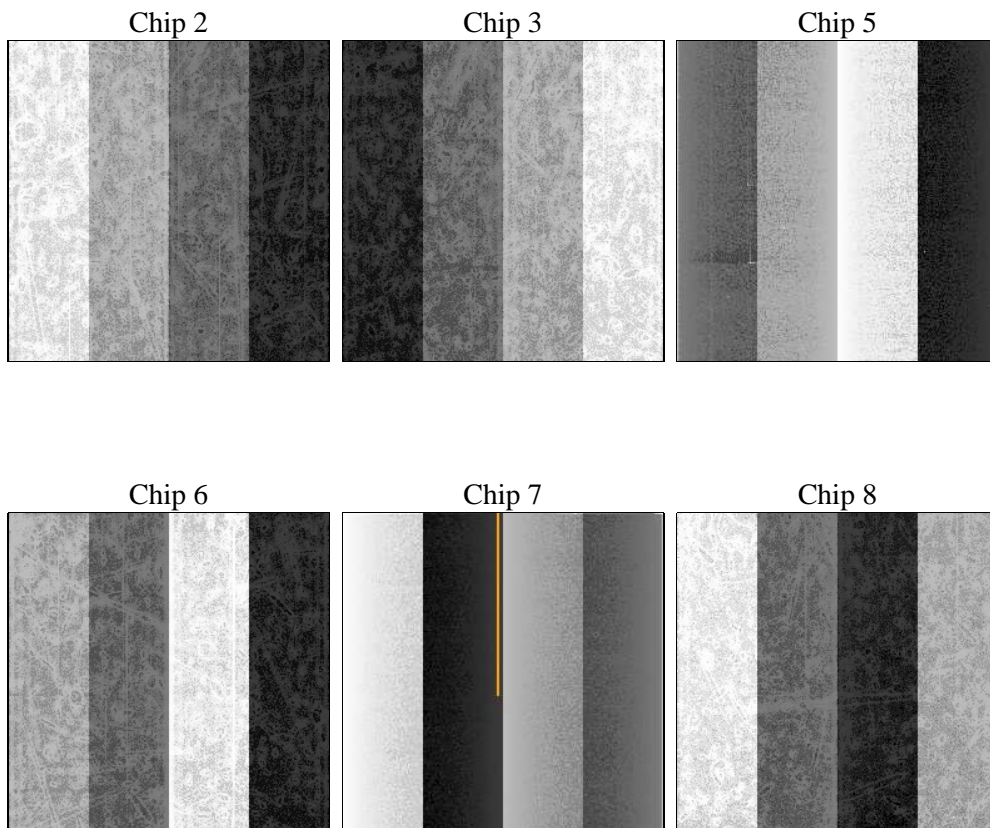
2 OBI

2.1 OBI

2.1.1 Images



2.1.2 Bias



2.1.3 Parameters

obi_num	0	Obi number	sched_exp_time	15000.498000	[s] Scheduled observation exposure time
ascdsver	10.3	Processing system revision	ontime	14968.371201813	Sum of GTIs [s]
caldsver	4.6.4	 	ontime2	14968.412241817	Sum of GTIs [s]
date	2014-12-01T08:53:47	Date and time of file creation	ontime3	14965.007111149	Sum of GTIs [s]
revision	2	Processing version of data	ontime5	14968.33016181	Sum of GTIs [s]
			ontime6	14968.289121807	Sum of GTIs [s]
			ontime7	14968.371201813	Sum of GTIs [s]
			ontime8	14964.966071427	Sum of GTIs [s]
			l1events	601281	Number of level 1 events

2.1.4 Events

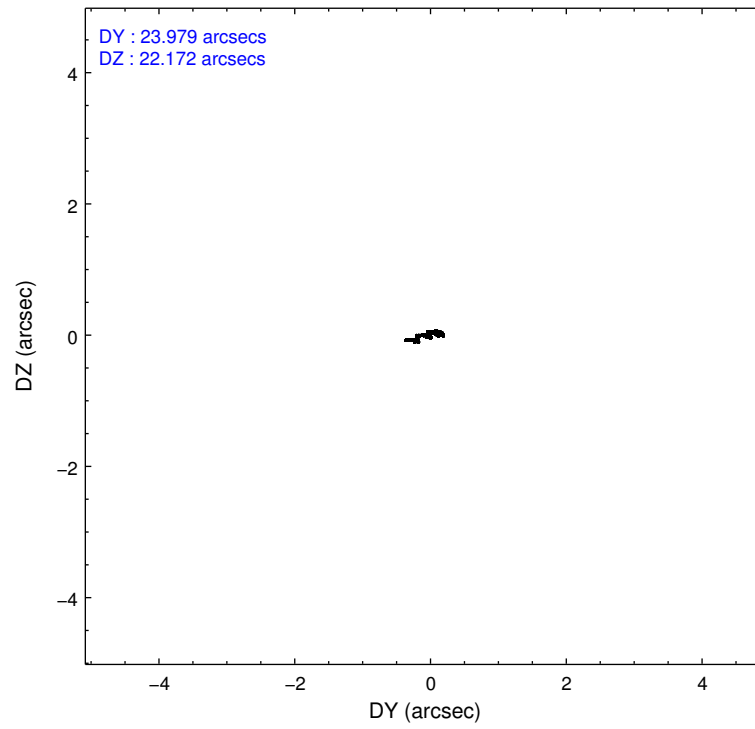
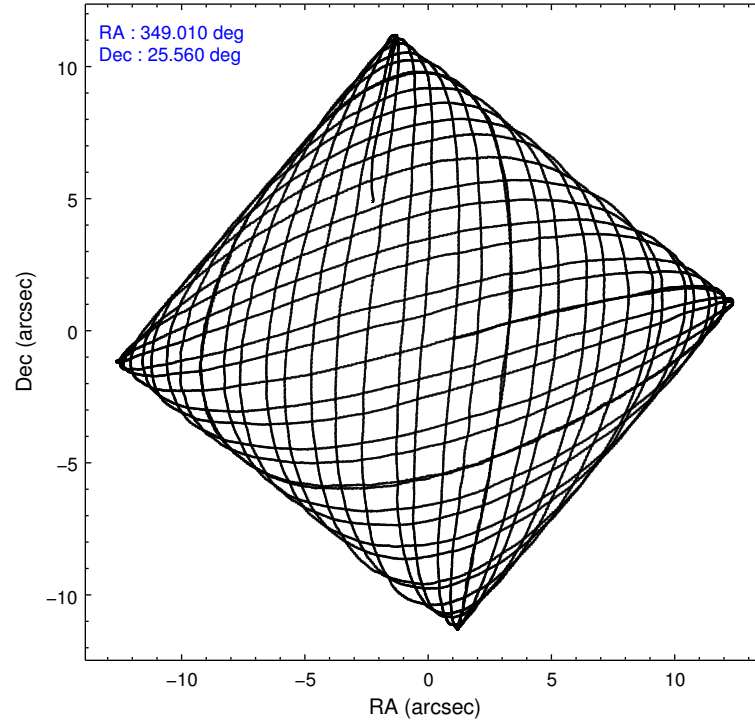
	ccd 2	ccd 3	ccd 5	ccd 6	ccd 7	ccd 8		ccd 2	ccd 3	ccd 5	ccd 6	ccd 7	ccd 8
level 1 events	84432	76637	138240	82185	110076	109711	grade 0 events	3388	3098	8820	3506	4441	9911
rejected events	74963	67644	69509	72275	60793	78022		4%	4%	6%	4%	4%	9%
rejected %	88%	88%	50%	87%	55%	71%	grade 1 events	48	32	320	37	124	83
								0%	0%	0%	0%	0%	0%
							grade 2 events	2398	2014	20581	2236	10176	6971
								2%	2%	14%	2%	9%	6%
							grade 3 events	928	976	2413	978	4343	3470
								1%	1%	1%	1%	3%	3%
							grade 4 events	943	1008	2192	1010	4277	3322
								1%	1%	1%	1%	3%	3%
							grade 5 events	3573	4244	10272	4262	11497	6022
								4%	5%	7%	5%	10%	5%
							grade 6 events	1816	1900	34752	2187	26065	8027
								2%	2%	25%	2%	23%	7%
							grade 7 events	71338	63365	58890	67969	49153	71905
								84%	82%	42%	82%	44%	65%

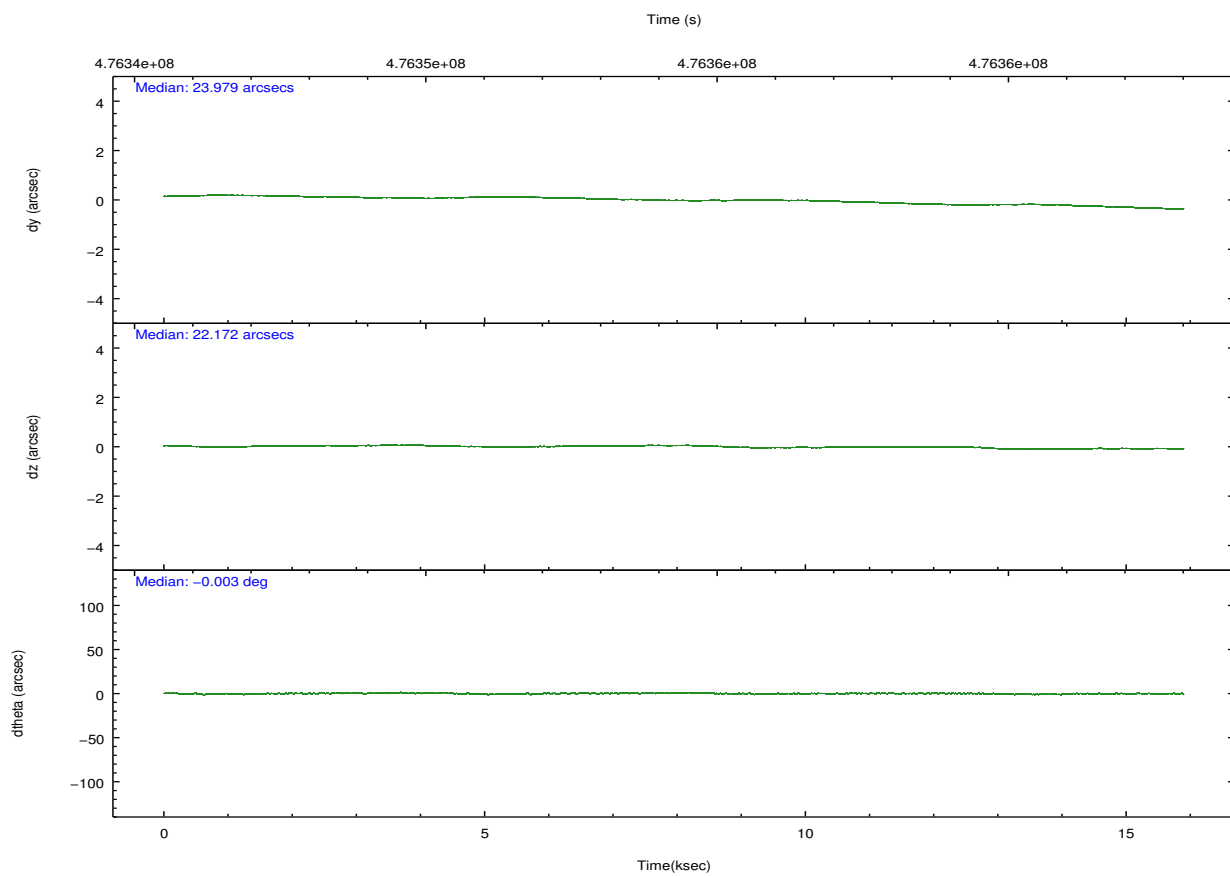
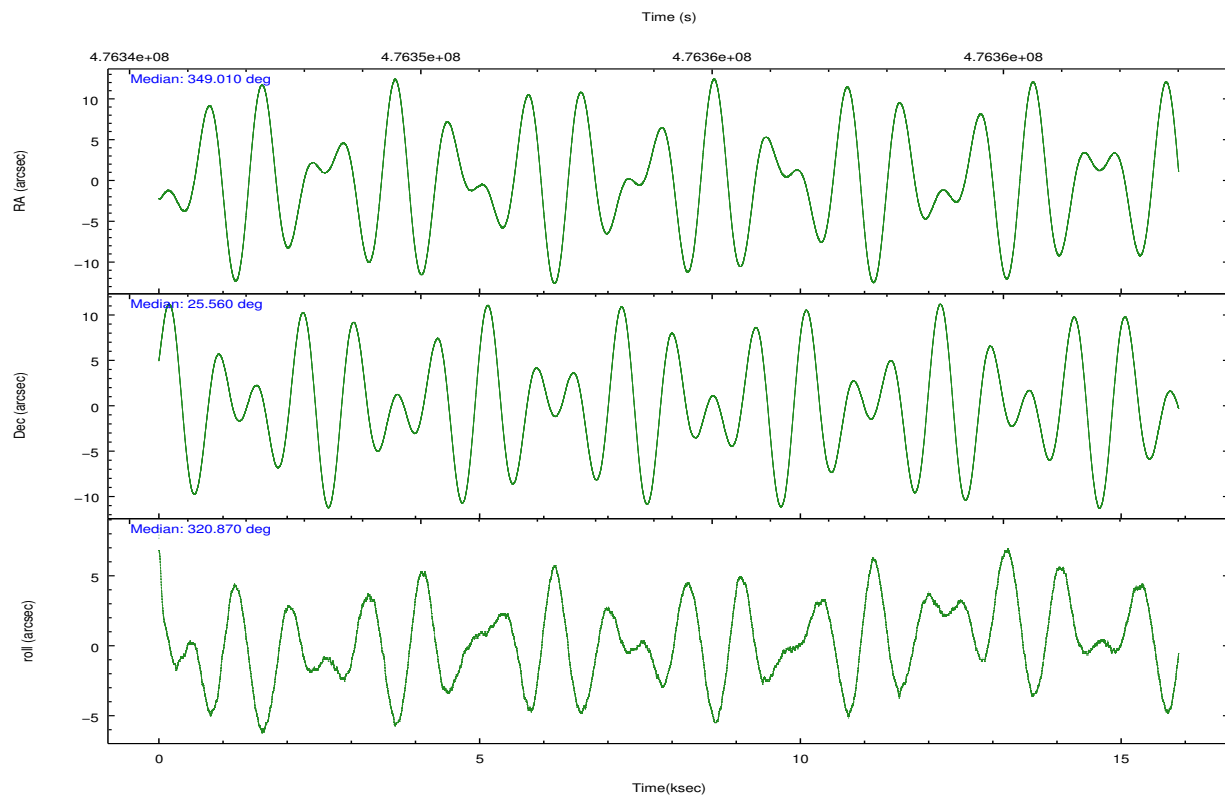
2.2 Compared Parameters

Parameter	Planned	Actual
Instrument	ACIS	ACIS
Detector	ACIS-235678	ACIS-235678
Grating	NONE	NONE
Data mode	VFAINT	VFAINT
Observation mode	POINTING	POINTING
[deg] Pointing RA	348.980279	349.0102886782407
[deg] Pointing Dec	25.564074	25.5601420899692
[deg] Pointing Roll	320.744636	320.8883177813688
[mm] SIM focus pos	-0.684267	-0.6828225247311905
[mm] SIM defocus	0	0.001444936568705701
[mm] SIM translation stage pos	-190.132523	-190.1425803651734
[mm] SIM translation stage offset	0	0.01005778216563158
[s] Observation start time (MET)	476347200.184000	476345881.1134
Observation start date	2013-02-04T06:38:53	2013-02-04T06:18:01
[s] Observation end time (MET)	476362201.184000	476362426.6643
Observation end date	2013-02-04T10:48:54	2013-02-04T10:53:46
Read mode	TIMED	TIMED

Parameter	Planned	Actual
Obspar format version number	7	7
Obspar file type	PREDICTED	ACTUAL
Obspar update status	NONE	UPDATED
CCD I0 on	N	N
CCD I1 on	N	N
CCD I2 on	O2	Y
CCD I3 on	Y	Y
CCD S0 on	N	N
CCD S1 on	O1	Y
CCD S2 on	Y	Y
CCD S3 on	Y	Y
CCD S4 on	Y	Y
CCD S5 on	N	N
Number of optional ACIS chips dropped	0	0
On-chip summing requested	N	N
Subarray requested	NONE	NONE
Alternating exposures requested	N	N
[s] Primary exposure time	0.000000	3.2

2.3 Aspect



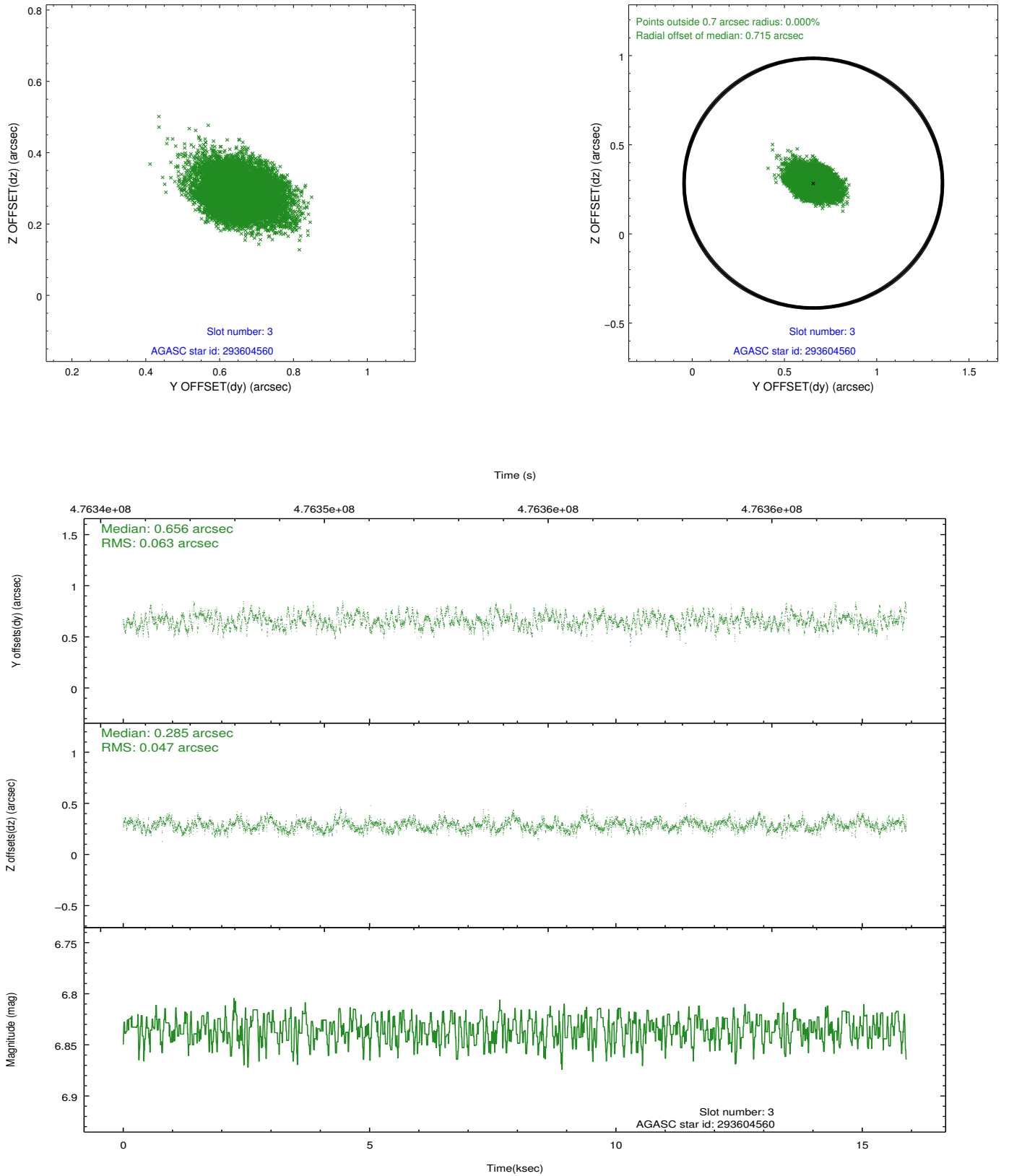


Slot Statistics

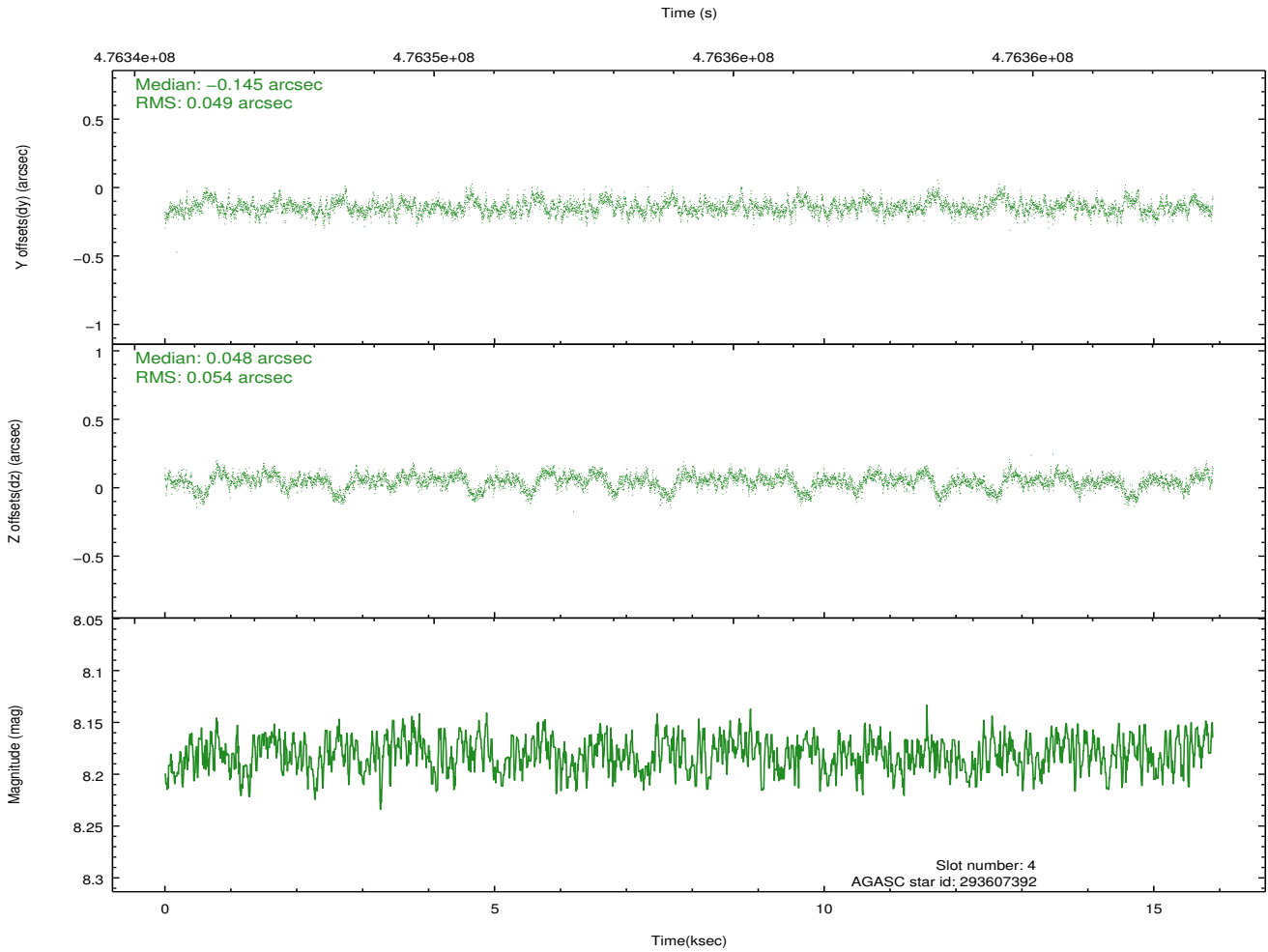
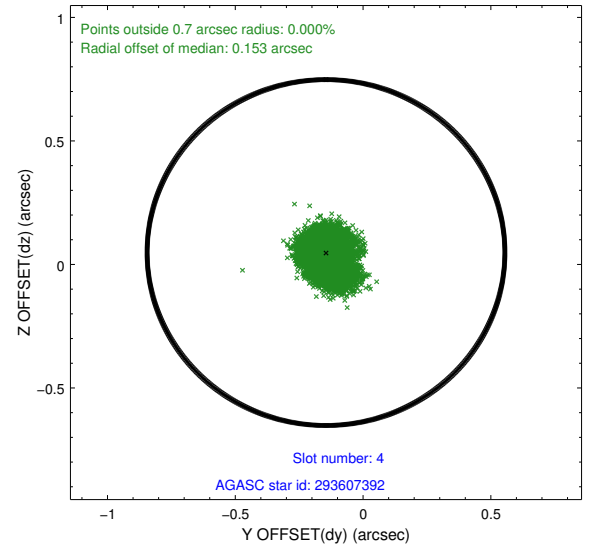
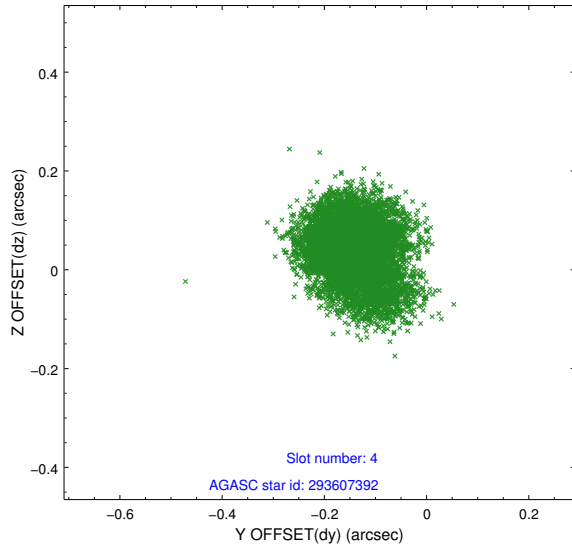
slot	status	used	id	mag	n_pts	med_dy	med_dz	dr1	dr2	ra	dec	mean_y	mean_z
0	FID		ACIS-S-2	6.93	3878	-0.107	-0.018	0.009	0.014	0.000000	0.000000	-777.32	-1743.69
1	FID		ACIS-S-4	7.01	3878	0.261	0.057	0.009	0.016	0.000000	0.000000	2136.24	164.52
2	FID		ACIS-S-5	7.04	3877	-0.185	-0.029	0.006	0.011	0.000000	0.000000	-1829.84	158.50
3	GUIDE	used	293604560	6.84	7755	0.656	0.285	0.084	0.135	348.991198	24.770947	1836.24	-2187.24
4	GUIDE	used	293607392	8.18	7753	-0.145	0.048	0.076	0.132	348.843668	25.860772	-1018.23	546.89
5	GUIDE	used	293608808	9.10	7746	0.296	0.068	0.089	0.150	349.103225	26.207102	-1157.52	2043.81
6	GUIDE	used	293613016	7.62	7754	-0.513	-0.362	0.157	0.231	348.900608	24.941899	1216.21	-1898.01
7	GUIDE	used	293603376	6.82	7755	-0.323	-0.049	0.106	0.169	348.845994	25.672248	-583.69	25.80

2.4 Star Slots

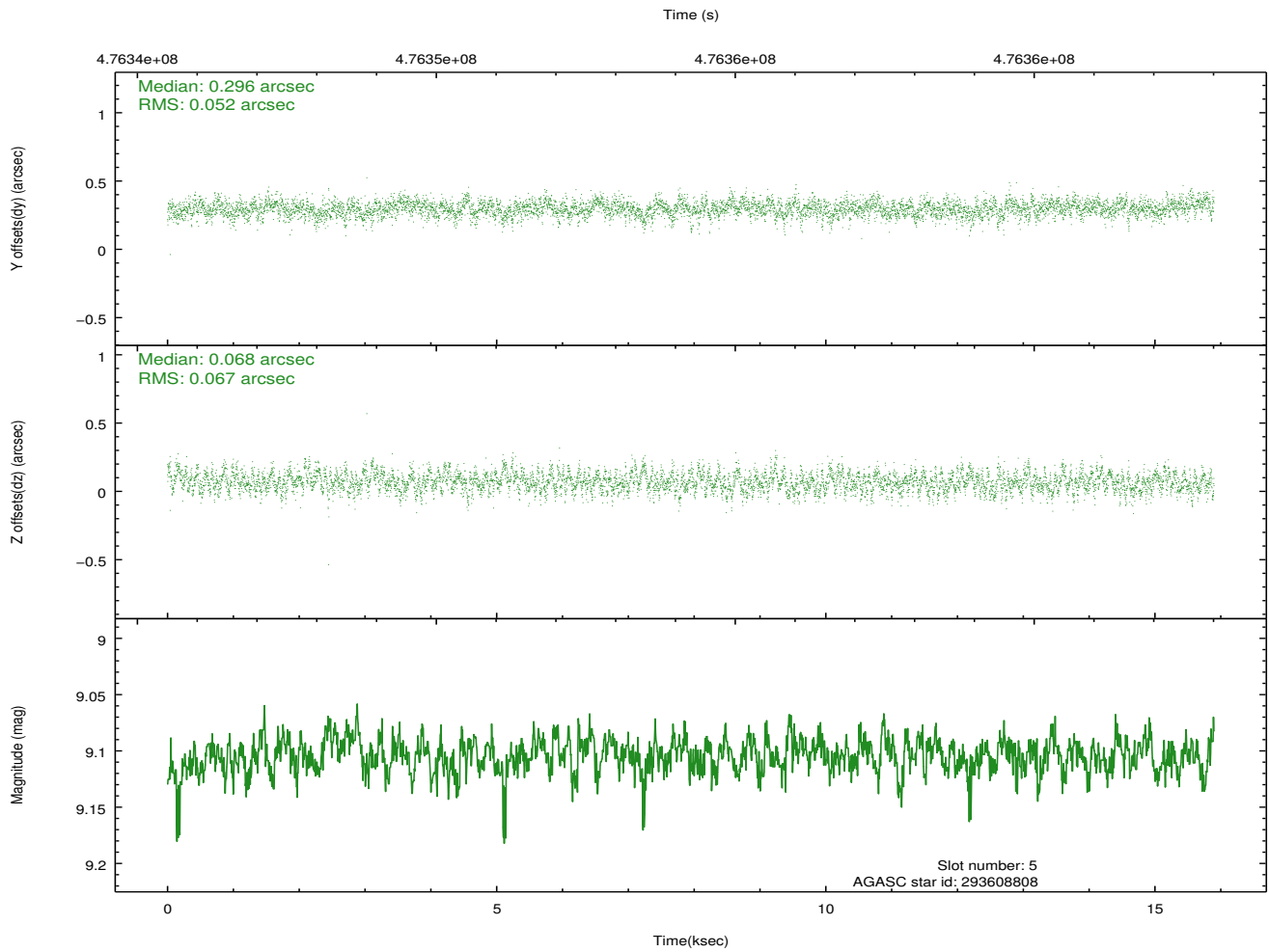
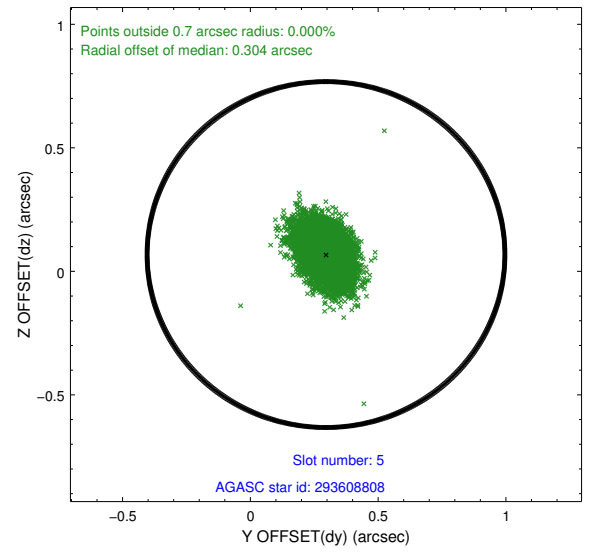
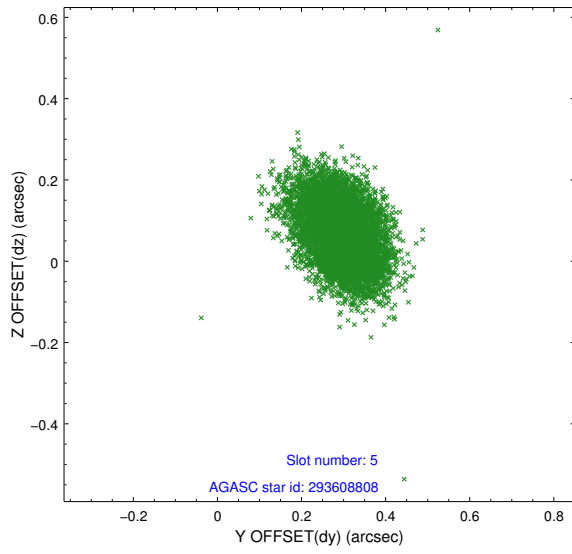
2.4.1 Slot 3



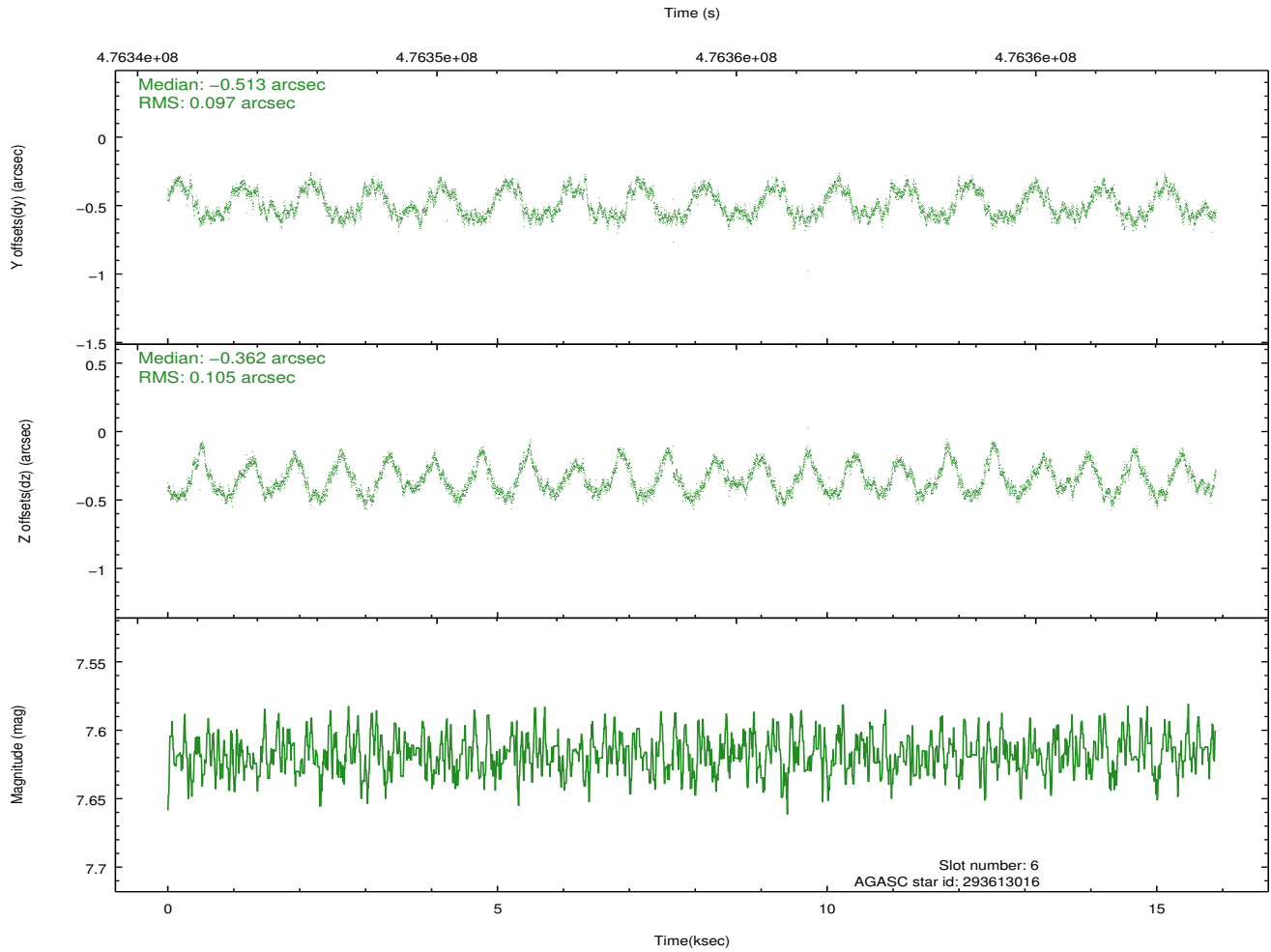
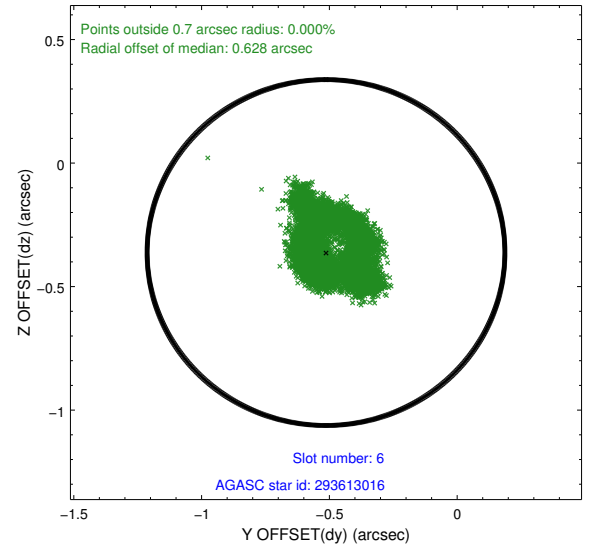
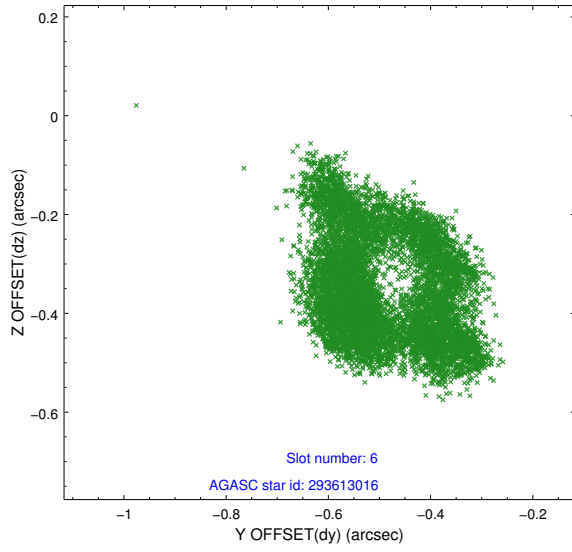
2.4.2 Slot 4



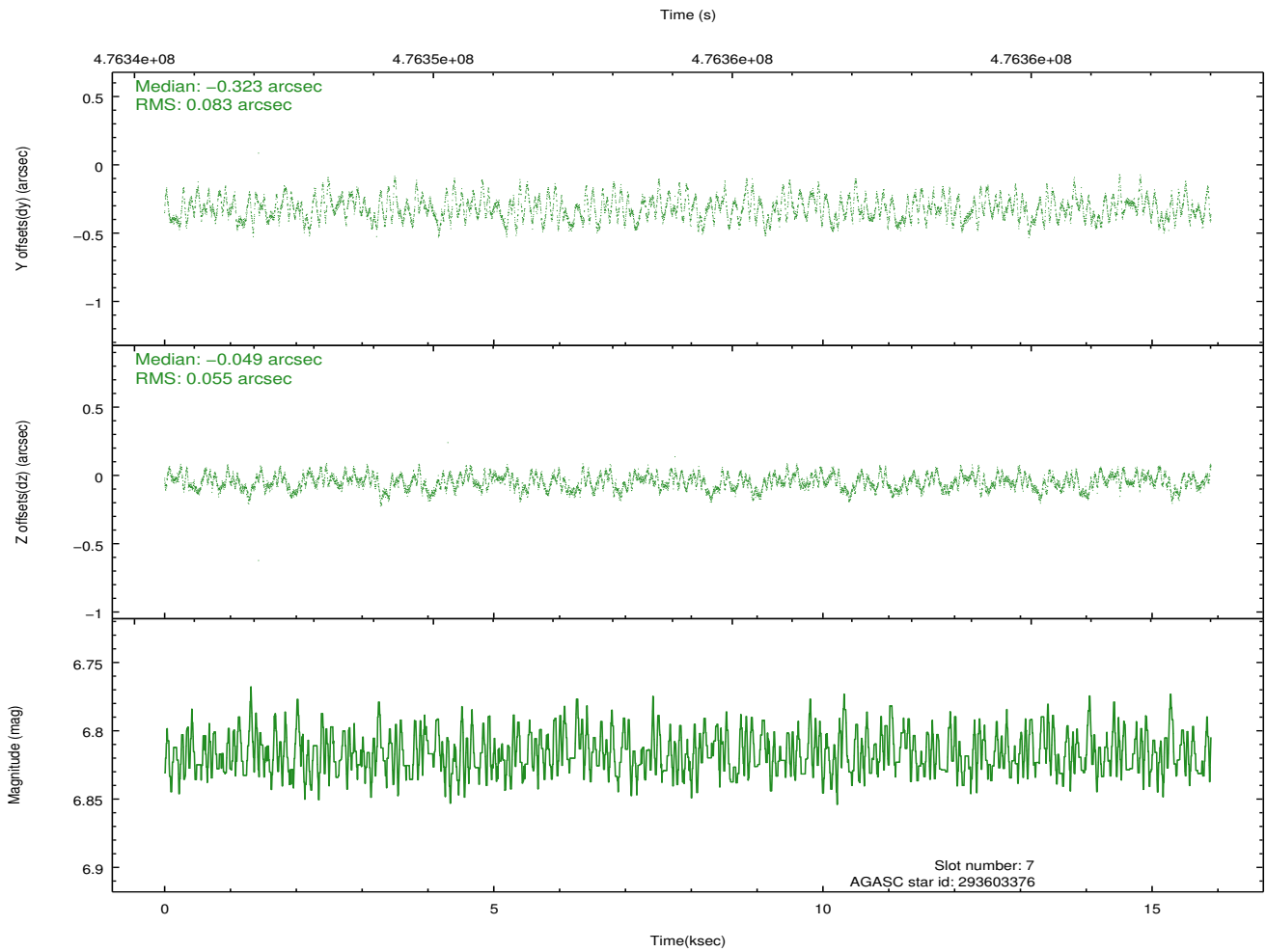
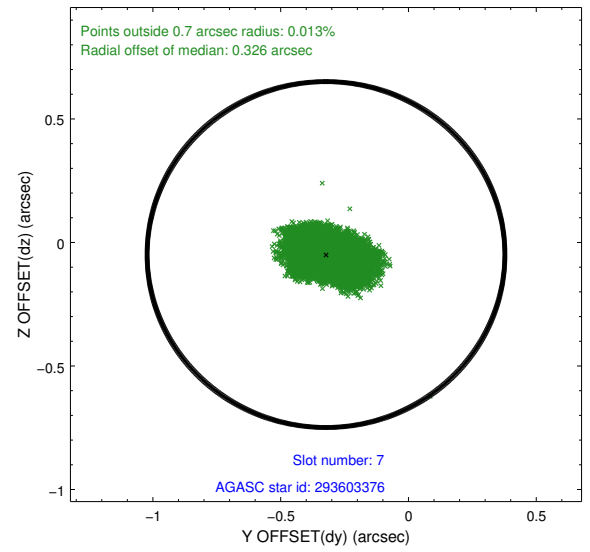
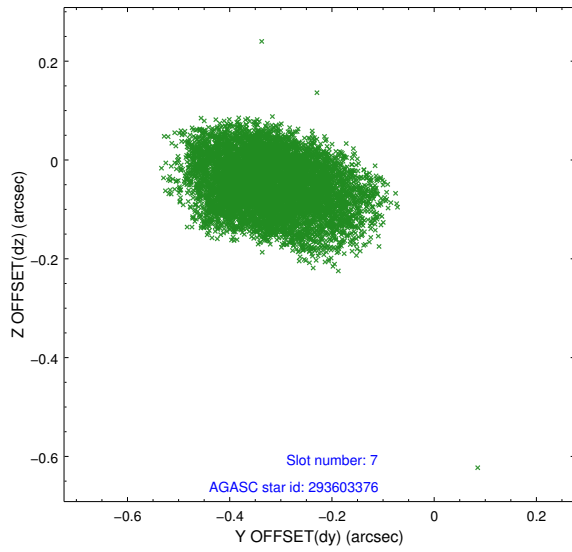
2.4.3 Slot 5



2.4.4 Slot 6

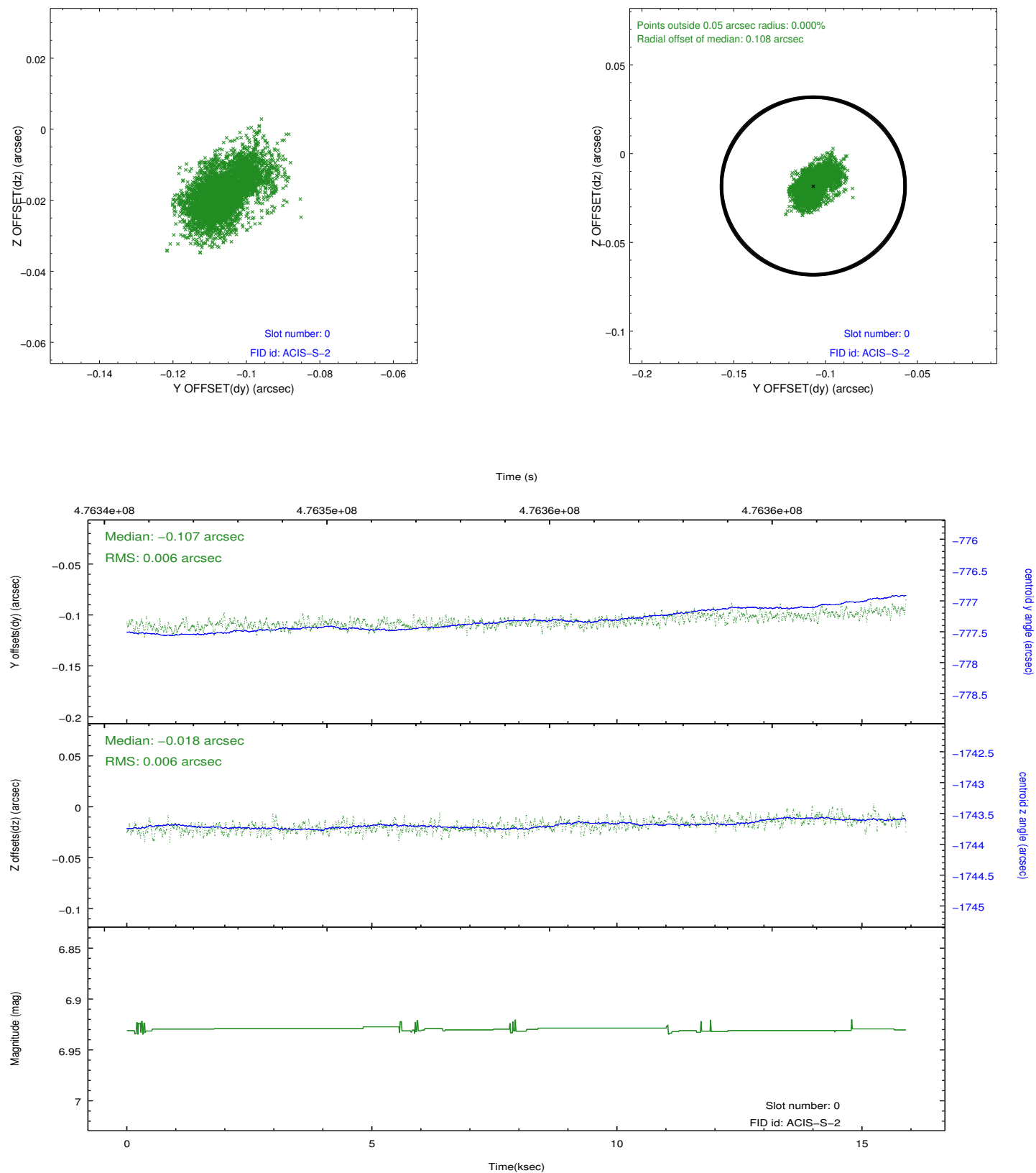


2.4.5 Slot 7

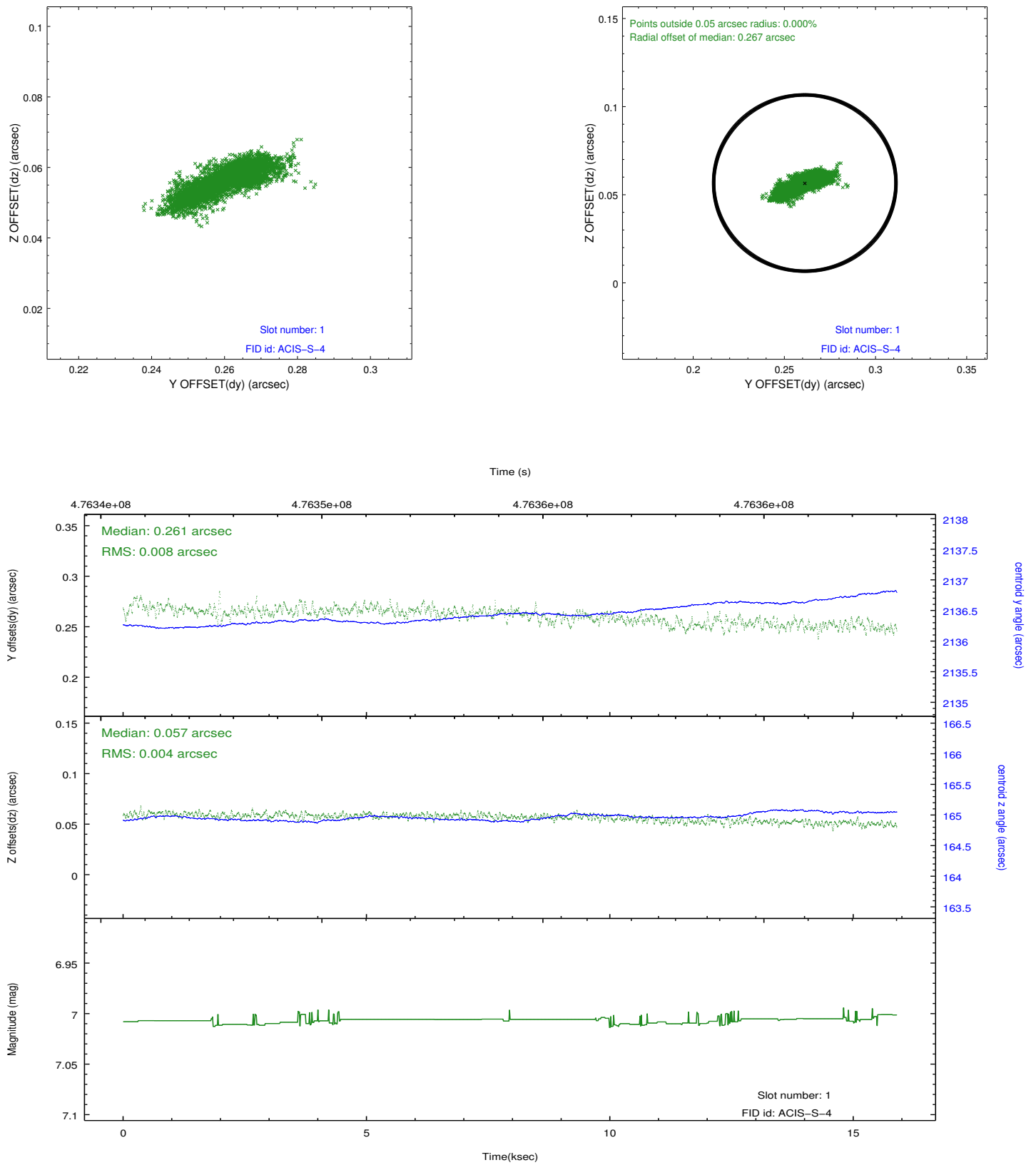


2.5 FID Slots

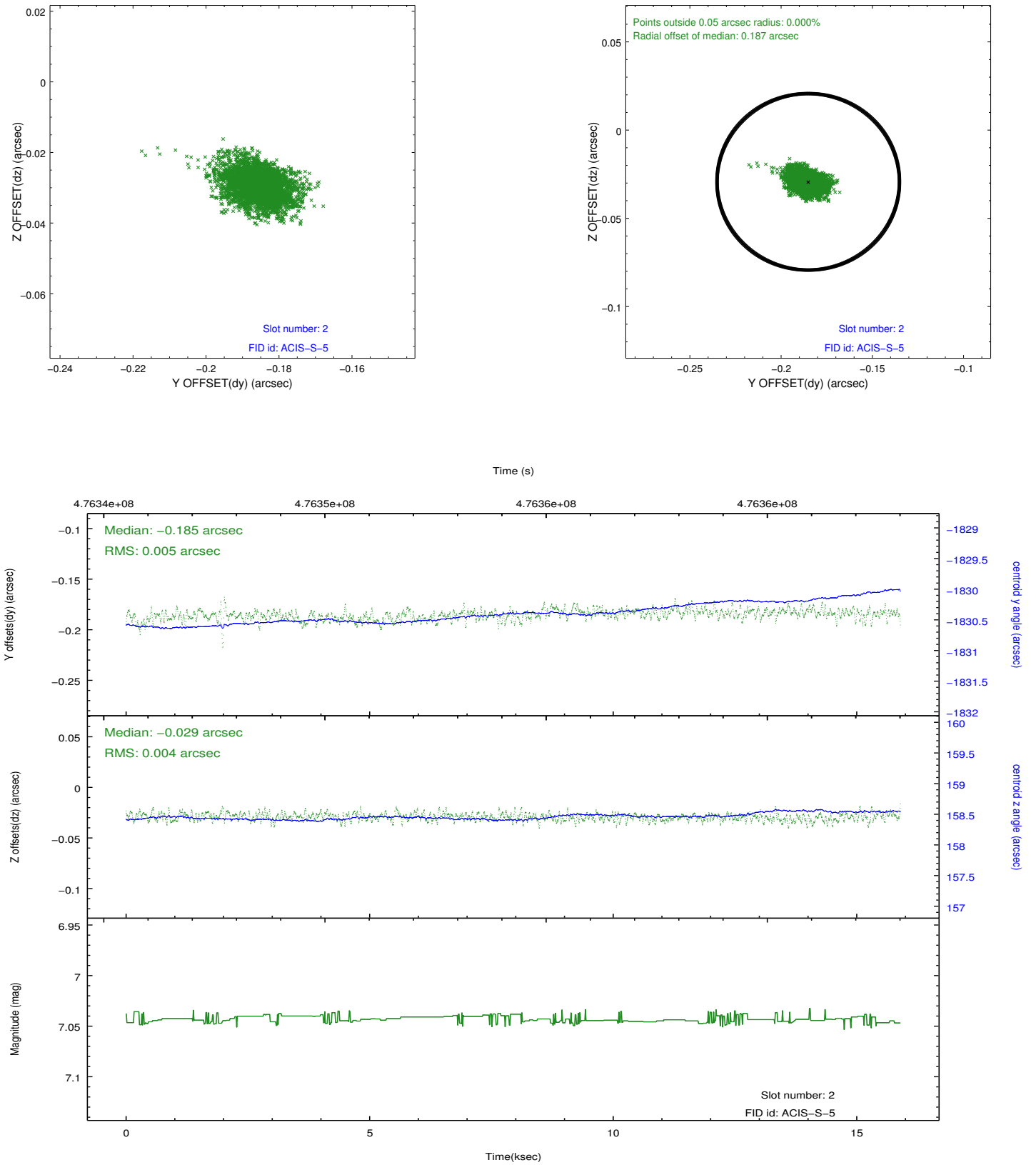
2.5.1 Slot 0



2.5.2 Slot 1



2.5.3 Slot 2



A Summary

A.1 Status

V&V Scientist	Jen Lauer
V&V Date (YYYY-MM-DD)	2014.12.09
V&V Edition	1
V&V Disposition and Status	OK
V&V Charge Time	14.968371201813

A.2 Comments

These data have been reprocessed with new aspect alignment calibration files that correct small mean offsets (up to 0.4 arcsecs) and improve overall astrometric accuracy. The new calibration was determined using data from the time period being reprocessed and was performed using cross-correlation of X-ray sources with radio and optical counterparts.