

# V&V Reference Report

## L2 ASCDS Version : 10

Observation 15027 - L2 Version 2  
Chandra X-Ray Center

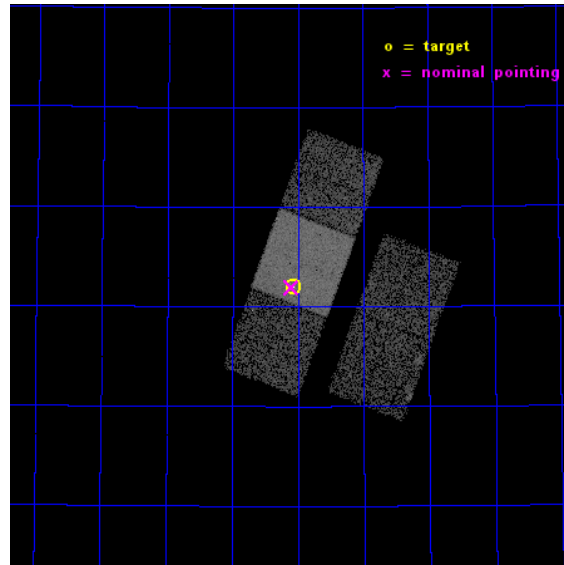
L2 Processing Date : Dec 4 2014

## Contents

<b>1</b>	<b>Front</b>	<b>2</b>
<b>2</b>	<b>OBI</b>	<b>3</b>
2.1	OBI . . . . .	3
2.1.1	Images . . . . .	3
2.1.2	Bias . . . . .	3
2.1.3	Parameters . . . . .	4
2.1.4	Events . . . . .	4
2.2	Compared Parameters . . . . .	5
2.3	Aspect . . . . .	6
2.4	Star Slots . . . . .	9
2.4.1	Slot 3 . . . . .	9
2.4.2	Slot 4 . . . . .	10
2.4.3	Slot 5 . . . . .	11
2.4.4	Slot 6 . . . . .	12
2.4.5	Slot 7 . . . . .	13
2.5	FID Slots . . . . .	14
2.5.1	Slot 0 . . . . .	14
2.5.2	Slot 1 . . . . .	15
2.5.3	Slot 2 . . . . .	16
<b>A</b>	<b>Summary</b>	<b>17</b>
A.1	Status . . . . .	17
A.2	Comments . . . . .	17

# 1 Front

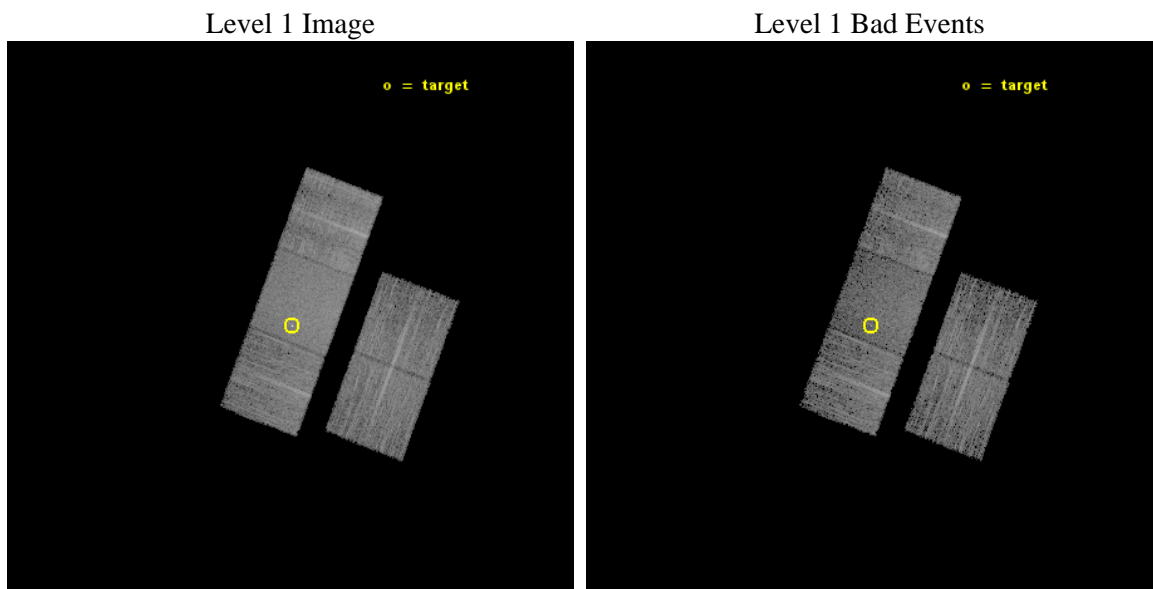
seq_num	702834	Sequence number
obs_id	15027	Observation id
title	Are Double-Peaked Optical Emission Lines Reliable Indicators of Dual AGNs?	Proposal title
observer	Dr. Claire Max	Principal investigator
object	SDSS J105104.52+625159.3	Source name
dtcycle	0	&#160
cycle	P	events from which exps? Prim/Second/Both
ra_targ	162.76875	Observer's specified target RA [deg]
dec_targ	62.866389	Observer's specified target Dec [deg]
ra_nom	162.77531818151	Nominal RA [deg]
dec_nom	62.865738583308	Nominal Dec [deg]
roll_nom	290.65924243704	Nominal Roll [deg]
revision	2	Processing version of data
ontime	10077.78834343	Sum of GTIs [s]
livetime	9946.1146195628	Livetime [s]
ontime2	10077.624183416	Sum of GTIs [s]
ontime3	10077.706263423	Sum of GTIs [s]
ontime6	10074.606343031	Sum of GTIs [s]
ontime7	10077.78834343	Sum of GTIs [s]
ontime8	10077.66522342	Sum of GTIs [s]
l2events	50637	Number of level 2 events



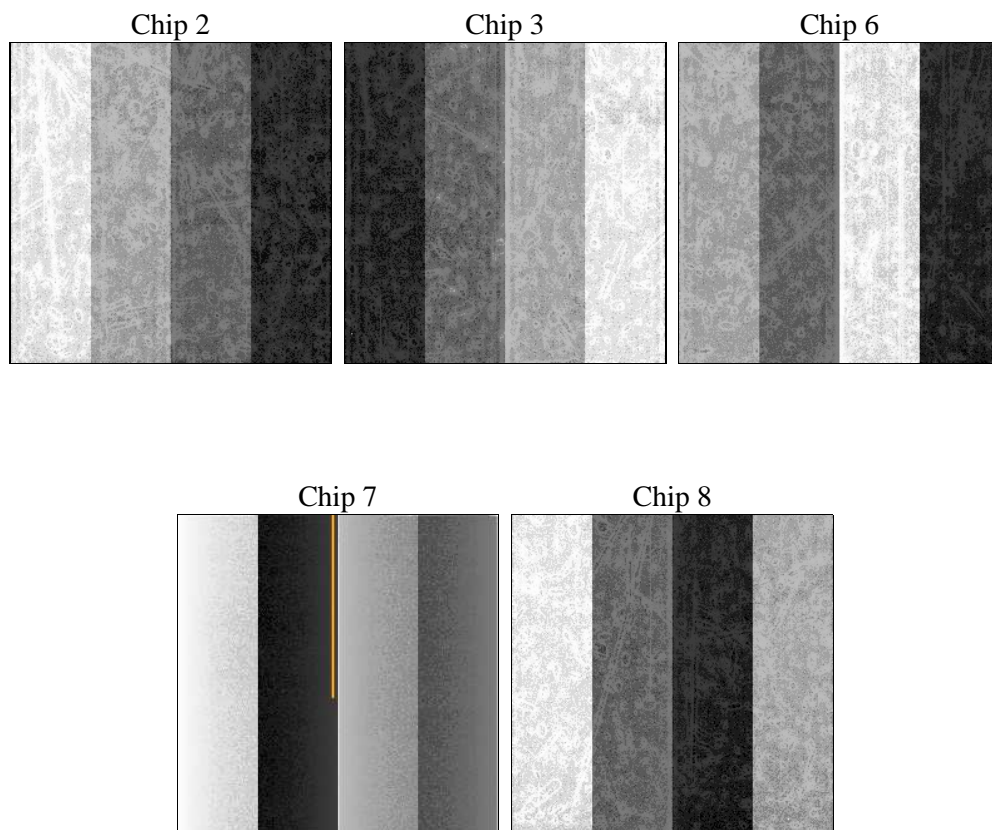
## 2 OBI

### 2.1 OBI

#### 2.1.1 Images



#### 2.1.2 Bias



### 2.1.3 Parameters

obi_num	0	Obi number	sched_exp_time	10009.216000	[s] Scheduled observation exposure time
ascdsver	10.3	Processing system revision	ontime	10077.78834343	Sum of GTIs [s]
caldbver	4.6.4	&#160	ontime2	10077.624183416	Sum of GTIs [s]
date	2014-12-04T09:54:45	Date and time of file creation	ontime3	10077.706263423	Sum of GTIs [s]
revision	2	Processing version of data	ontime6	10074.606343031	Sum of GTIs [s]
			ontime7	10077.78834343	Sum of GTIs [s]
			ontime8	10077.66522342	Sum of GTIs [s]
			l1events	278959	Number of level 1 events

### 2.1.4 Events

	ccd 2	ccd 3	ccd 6	ccd 7	ccd 8
level 1 events	49005	46978	50621	67105	65250
rejected events	43228	41618	44691	36861	47505
rejected %	88%	88%	88%	54%	72%

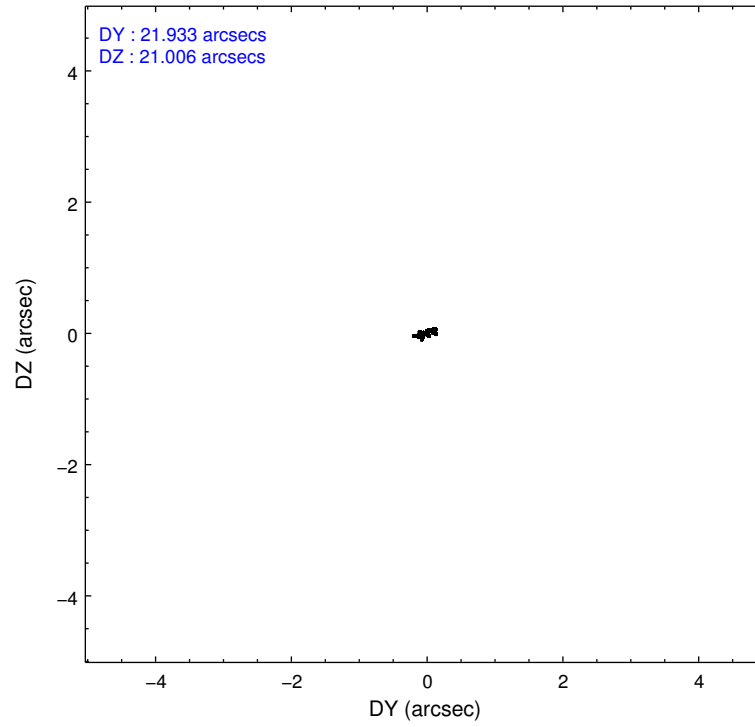
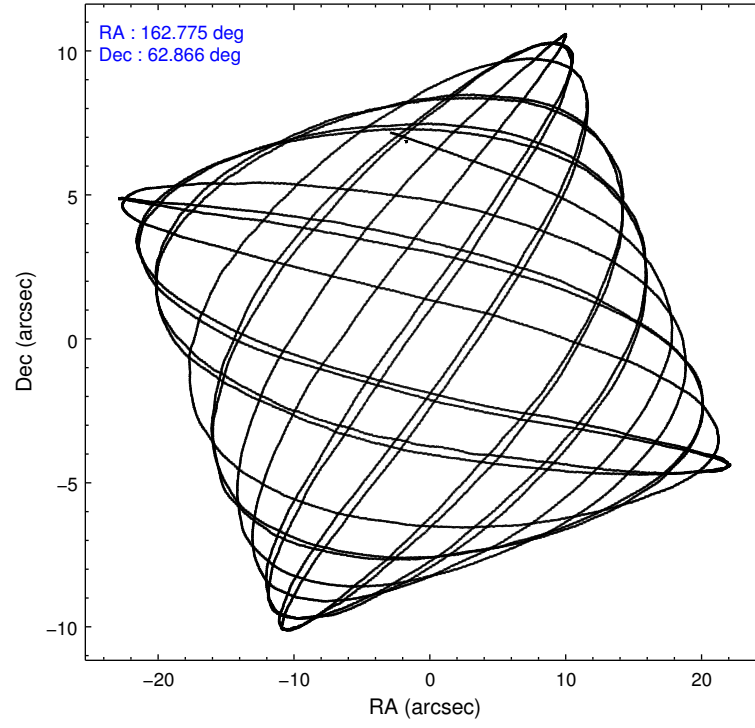
	ccd 2	ccd 3	ccd 6	ccd 7	ccd 8
grade 0 events	2091	1885	1993	3119	5134
	4%	4%	3%	4%	7%
grade 1 events	29	30	22	100	55
	0%	0%	0%	0%	0%
grade 2 events	1417	1199	1381	6245	4166
	2%	2%	2%	9%	6%
grade 3 events	588	566	580	2596	1853
	1%	1%	1%	3%	2%
grade 4 events	569	543	601	2646	1752
	1%	1%	1%	3%	2%
grade 5 events	2005	2569	2635	6869	3617
	4%	5%	5%	10%	5%
grade 6 events	1113	1169	1378	15662	4848
	2%	2%	2%	23%	7%
grade 7 events	41193	39017	42031	29868	43825
	84%	83%	83%	44%	67%

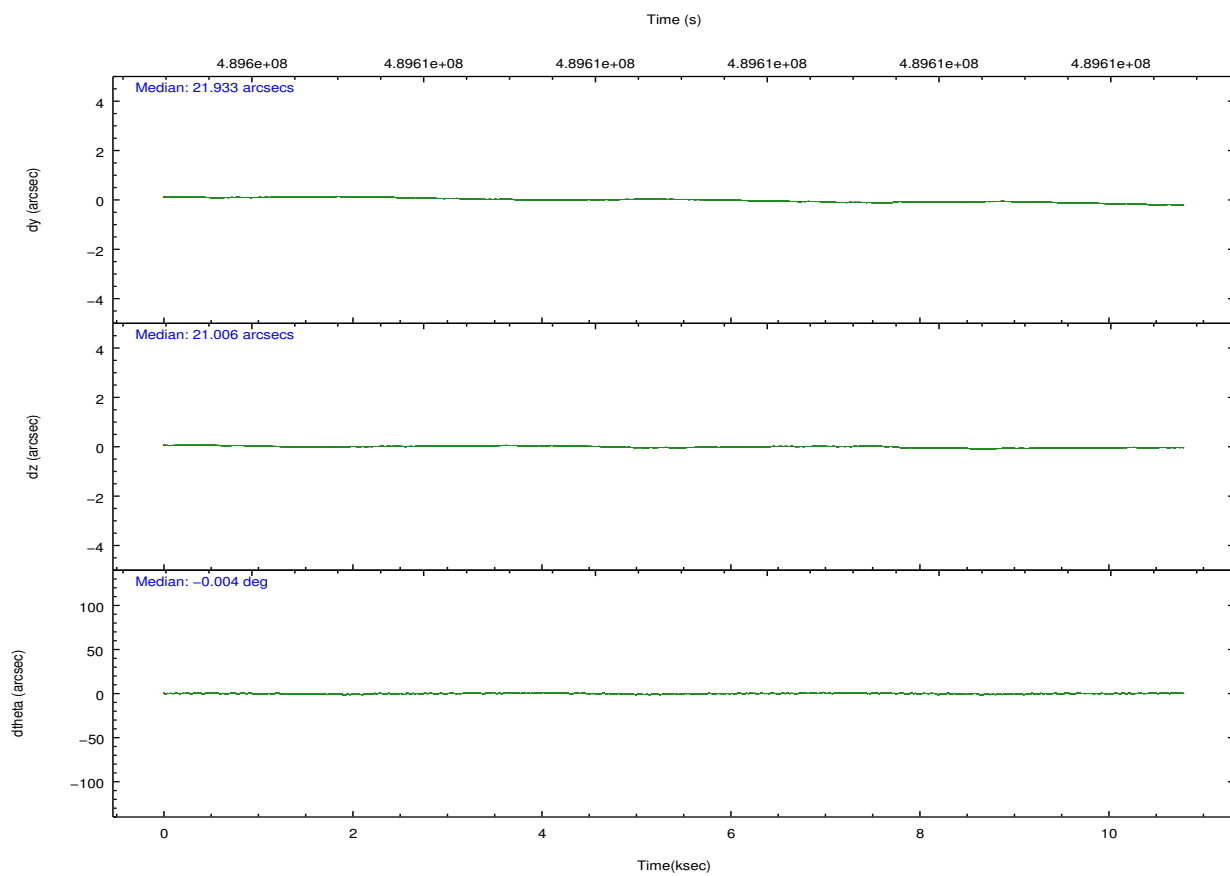
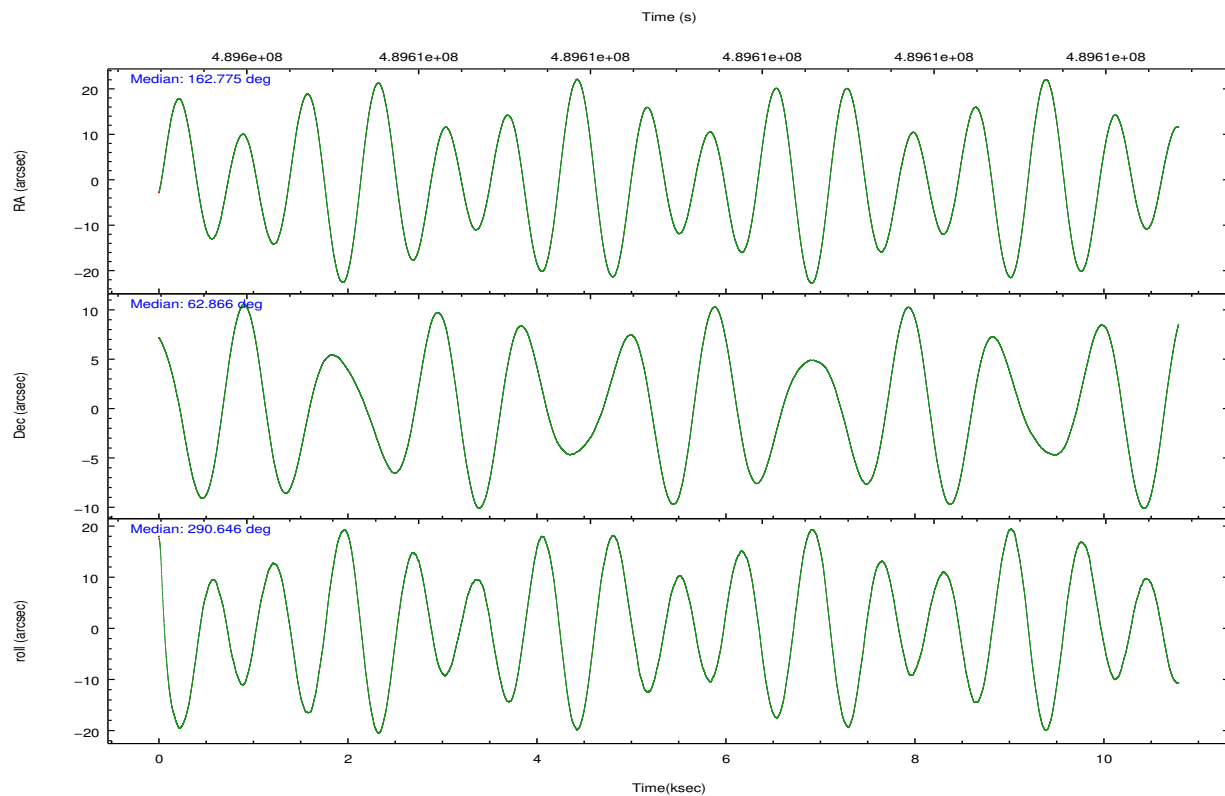


## 2.2 Compared Parameters

Parameter	Planned	Actual	Parameter	Planned	Actual
Instrument	ACIS	ACIS	Obspar format version number	7	7
Detector	ACIS-23678	ACIS-23678	Obspar file type	PREDICTED	ACTUAL
Grating	NONE	NONE	Obspar update status	NONE	UPDATED
Data mode	VFAINT	VFAINT	CCD I0 on	N	N
Observation mode	POINTING	POINTING	CCD I1 on	N	N
[deg] Pointing RA	162.728335	162.7753181815064	CCD I2 on	O2	Y
[deg] Pointing Dec	62.882787	62.86573858330802	CCD I3 on	O3	Y
[deg] Pointing Roll	290.544420	290.6592424370381	CCD S0 on	N	N
[mm] SIM focus pos	-0.684267	-0.6828225247311905	CCD S1 on	N	N
[mm] SIM defocus	0	0.001444936568705701	CCD S2 on	O4	Y
[mm] SIM translation stage pos	-190.132523	-190.1425803651734	CCD S3 on	Y	Y
[mm] SIM translation stage offset	0	0.01005778216563158	CCD S4 on	O1	Y
[s] Observation start time (MET)	489604301.184000	489603065.78161	CCD S5 on	N	N
Observation start date	2013-07-07T17:10:34	2013-07-07T16:51:05	Number of optional ACIS chips dropped	0	0
[s] Observation end time (MET)	489614310.184000	489614539.63223	On-chip summing requested	N	N
Observation end date	2013-07-07T19:57:23	2013-07-07T20:02:19	Subarray requested	NONE	NONE
Read mode	TIMED	TIMED	Alternating exposures requested	N	N
			[s] Primary exposure time	0.000000	3.1

## 2.3 Aspect



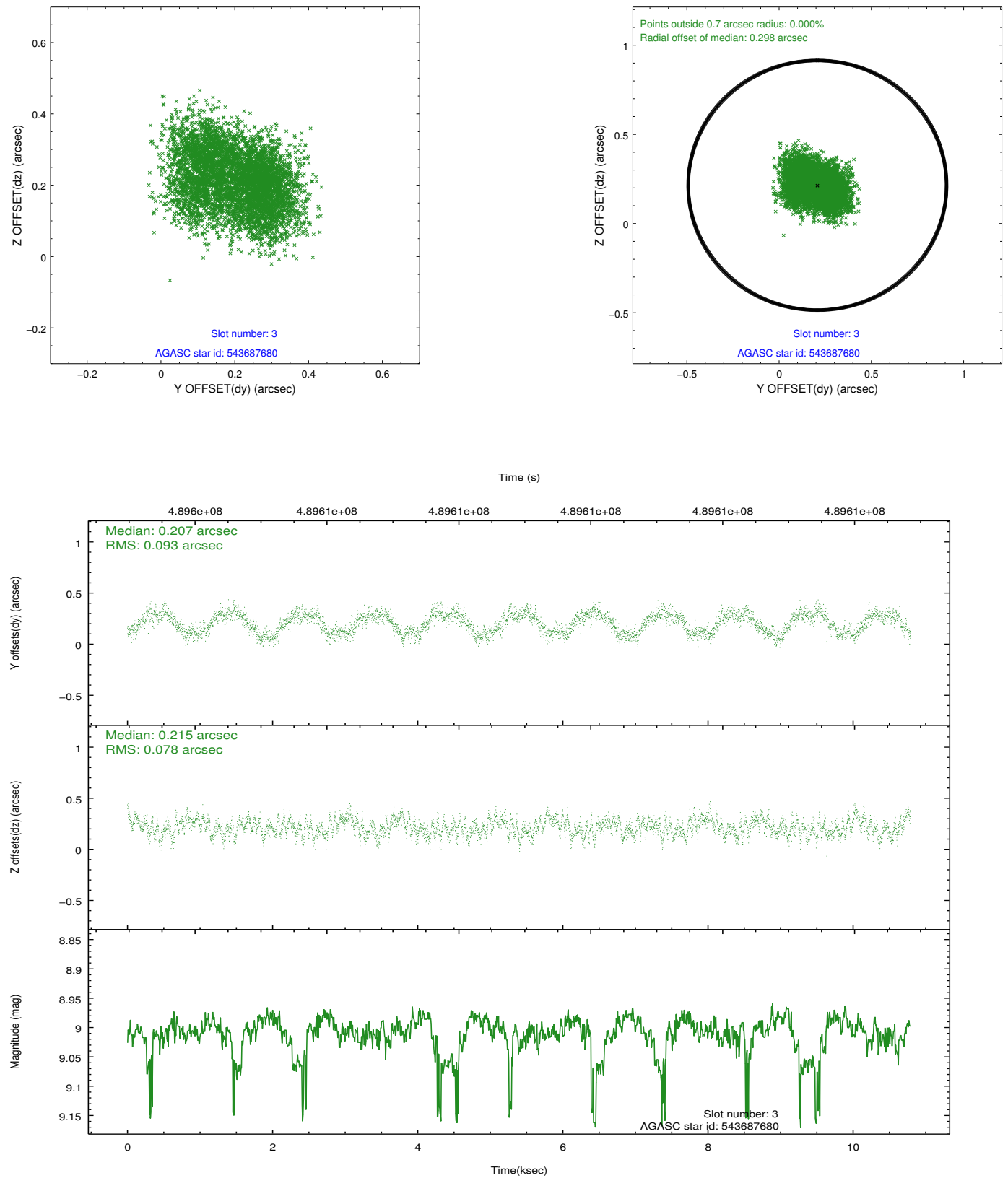


### Slot Statistics

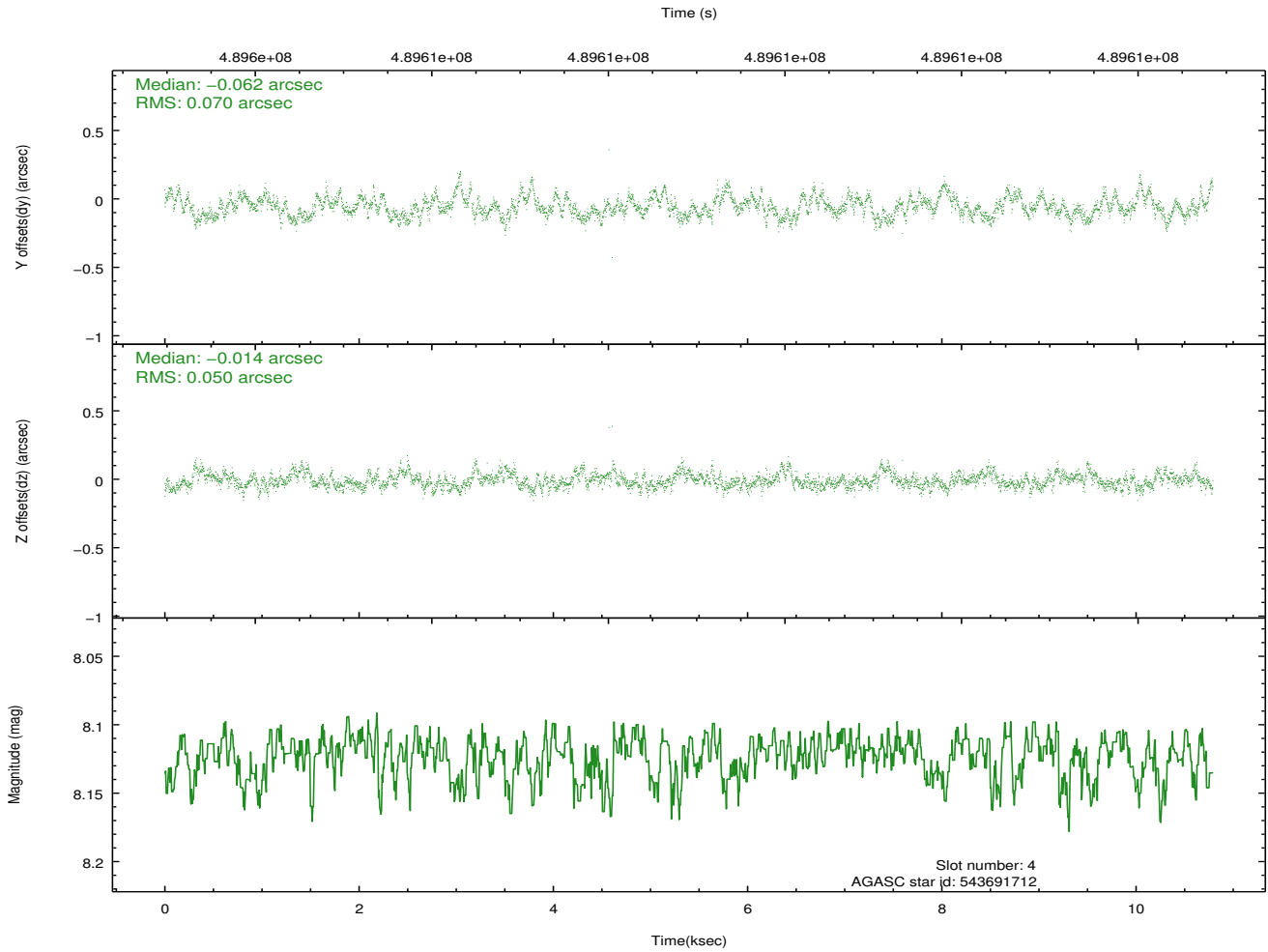
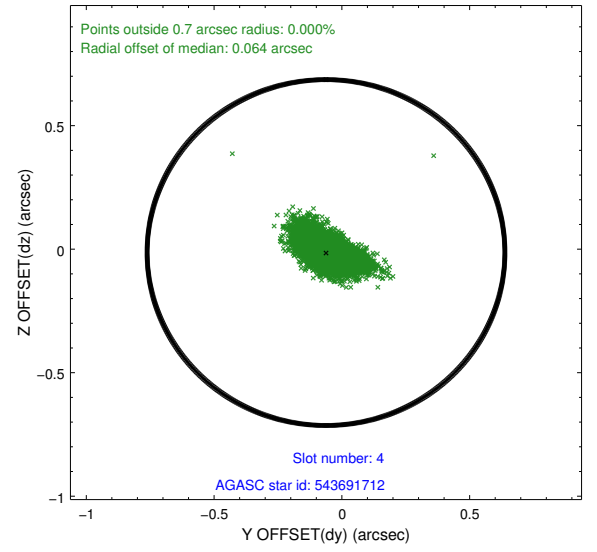
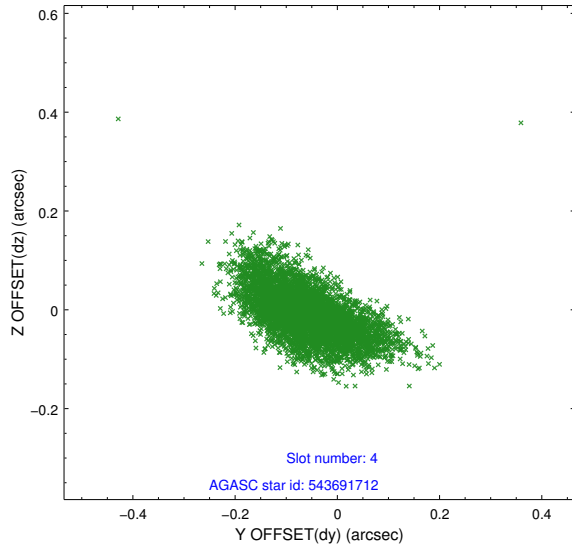
slot	status	used	id	mag	n_pts	med_dy	med_dz	dr1	dr2	ra	dec	mean_y	mean_z
0	FID		ACIS-S-2	6.93	2633	-0.102	0.007	0.007	0.011	0.000000	0.000000	-775.18	-1742.48
1	FID		ACIS-S-4	7.01	2633	0.209	0.047	0.007	0.013	0.000000	0.000000	2138.18	165.54
2	FID		ACIS-S-5	7.04	2633	-0.138	-0.046	0.009	0.015	0.000000	0.000000	-1827.45	159.67
3	GUIDE	used	543687680	9.01	5223	0.207	0.215	0.131	0.198	163.433931	63.198321	-667.48	1473.52
4	GUIDE	used	543691712	8.12	5263	-0.062	-0.014	0.088	0.155	163.378753	63.551172	-1891.95	1823.43
5	GUIDE	used	543693176	8.99	5263	-0.100	-0.180	0.137	0.205	162.062791	62.518318	835.45	-1493.30
6	GUIDE	used	543693568	8.15	5265	-0.206	-0.200	0.057	0.092	163.761369	62.949617	355.56	1672.75
7	GUIDE	used	543694912	9.22	5253	0.157	0.172	0.111	0.180	161.285828	62.717284	-301.61	-2428.27

## 2.4 Star Slots

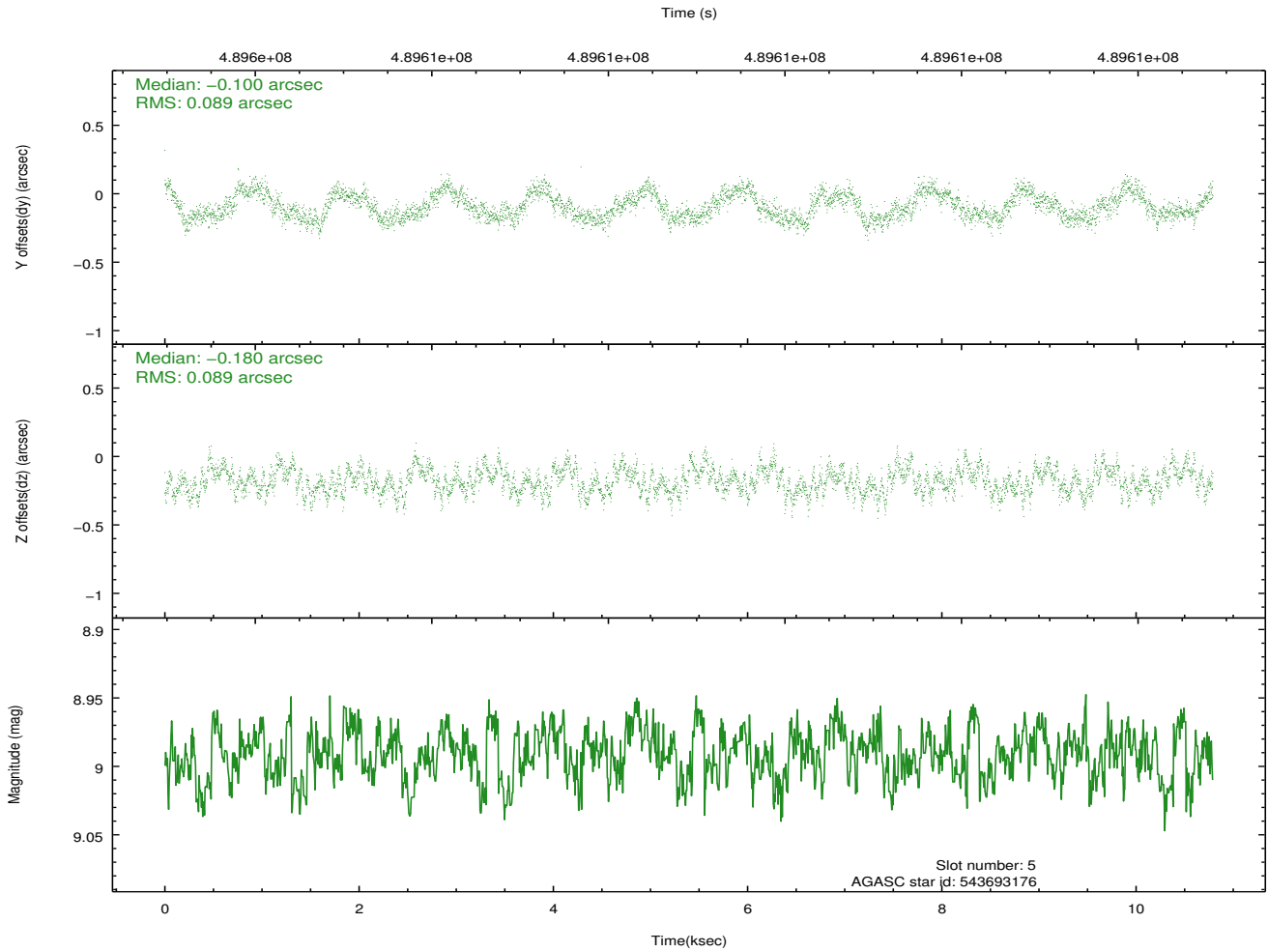
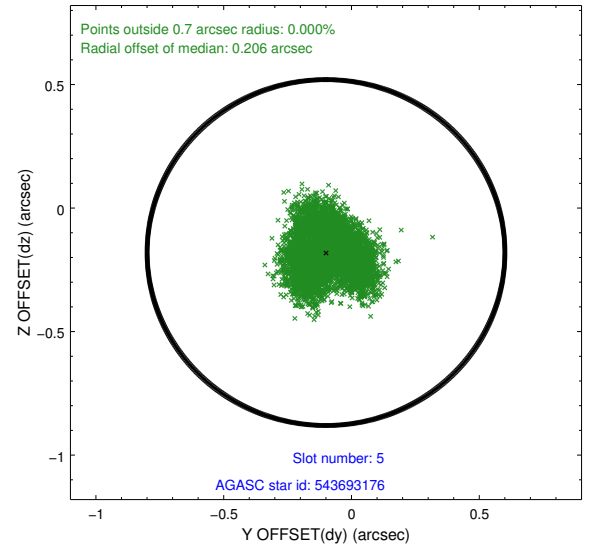
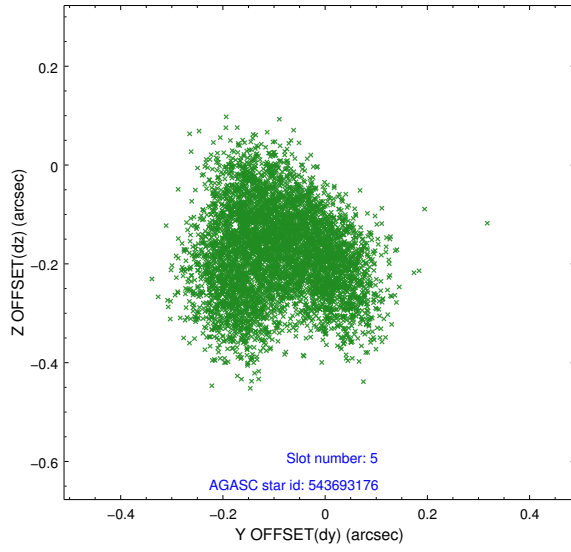
### 2.4.1 Slot 3



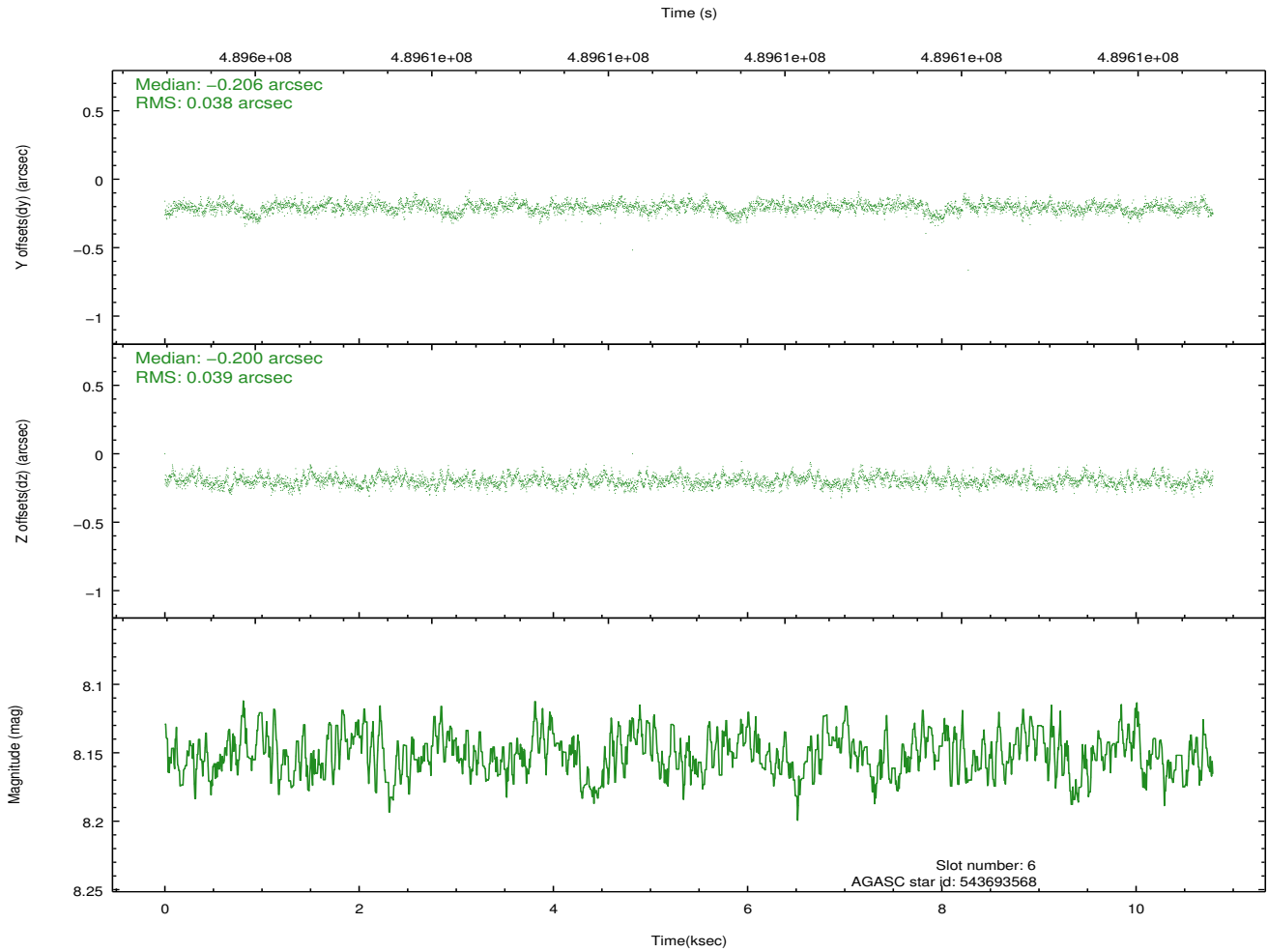
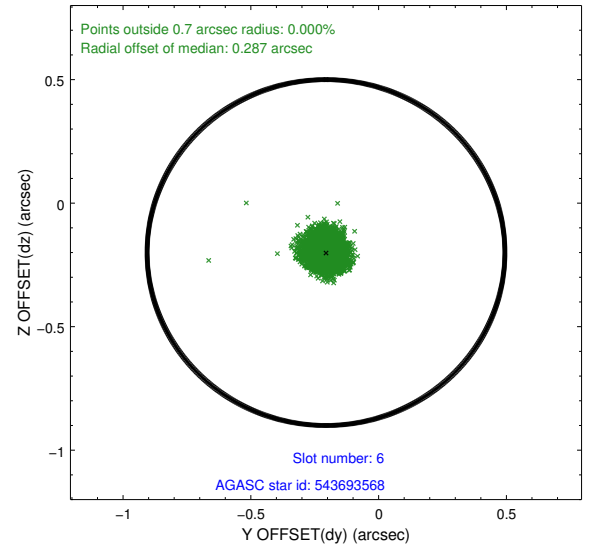
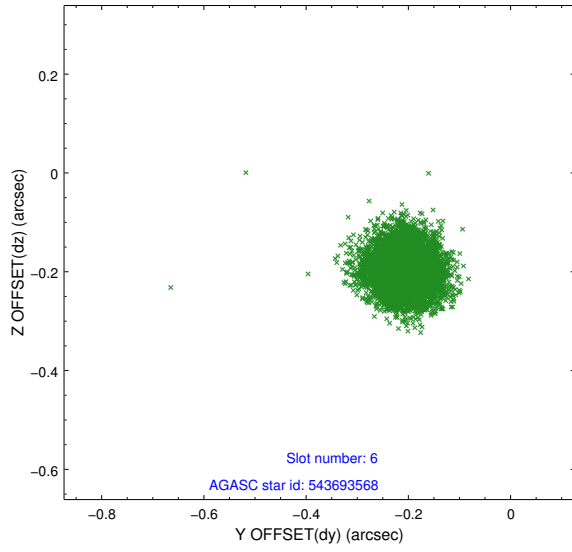
## 2.4.2 Slot 4



### 2.4.3 Slot 5

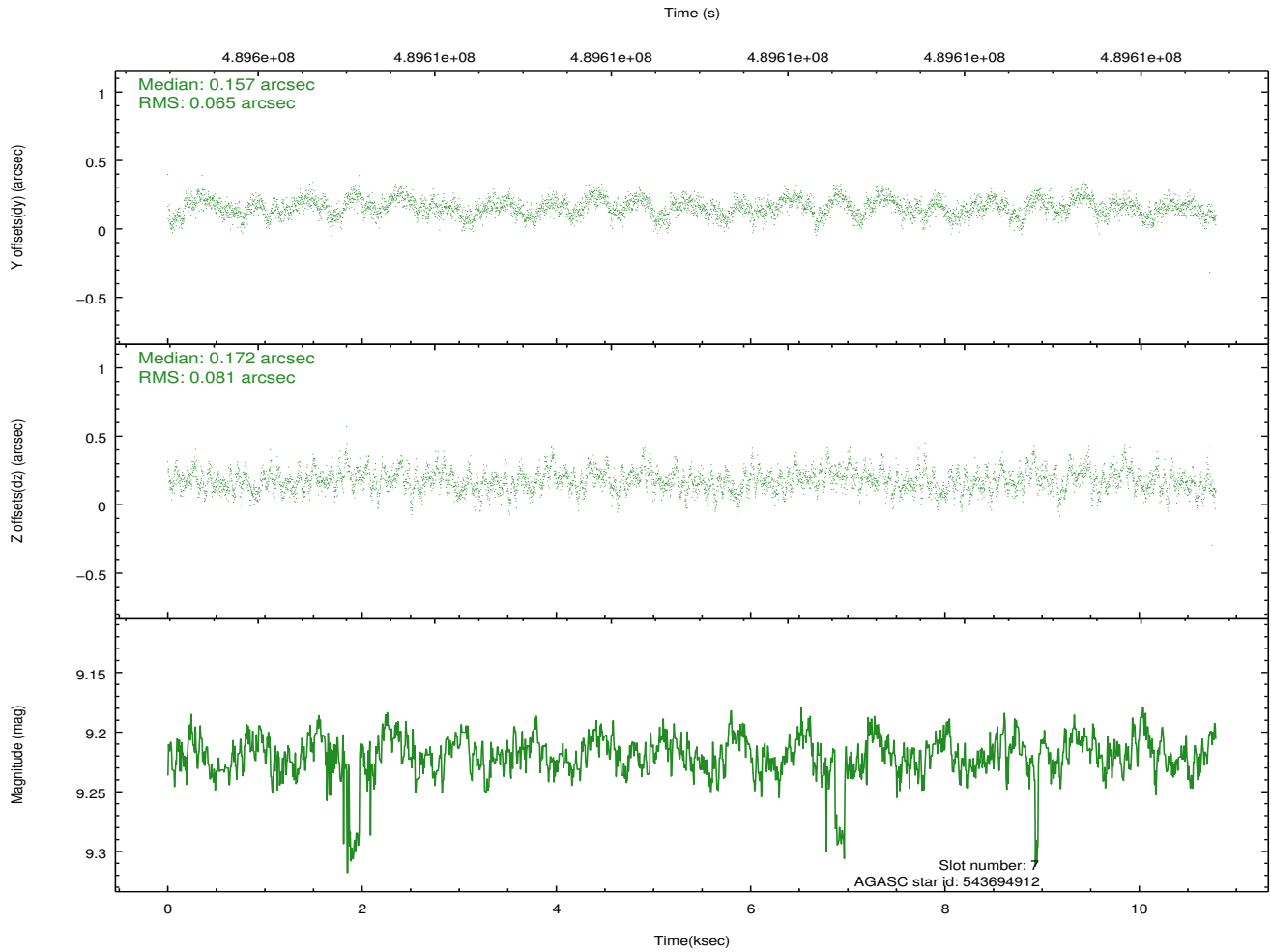
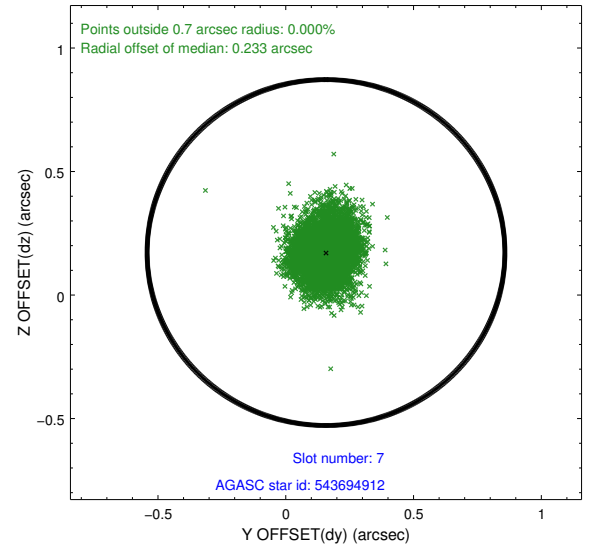
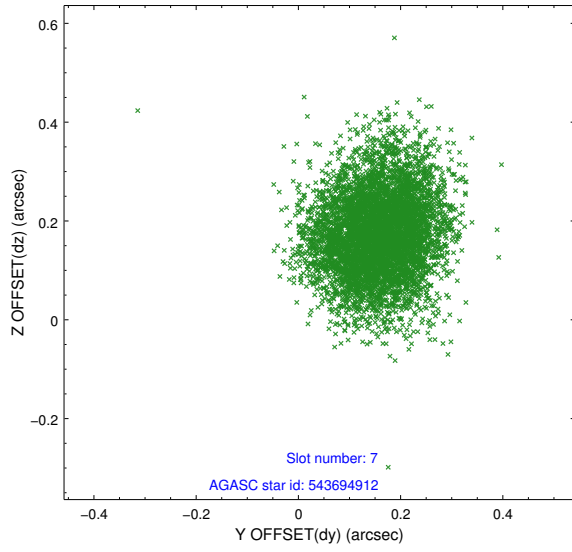


## 2.4.4 Slot 6



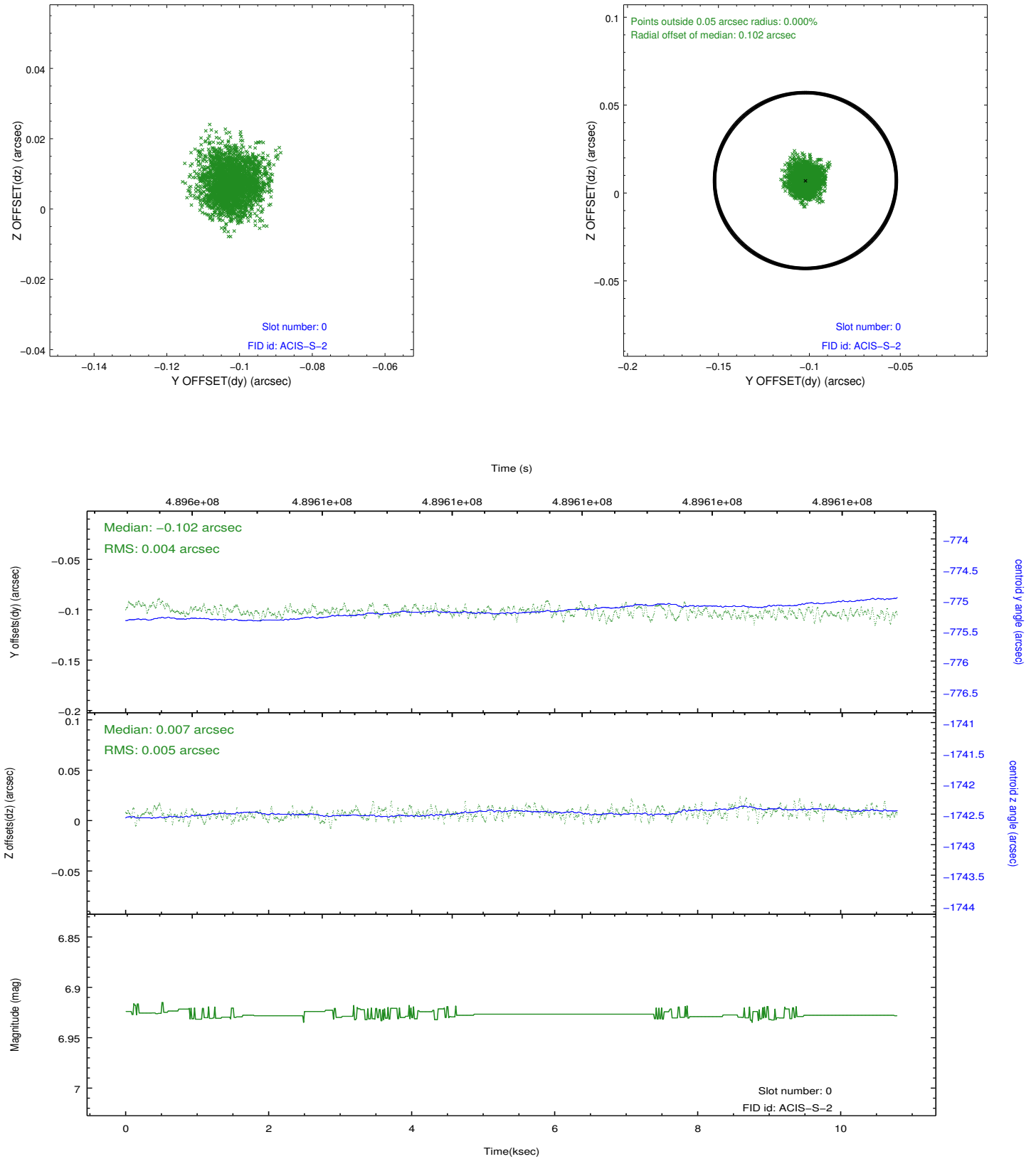


## 2.4.5 Slot 7

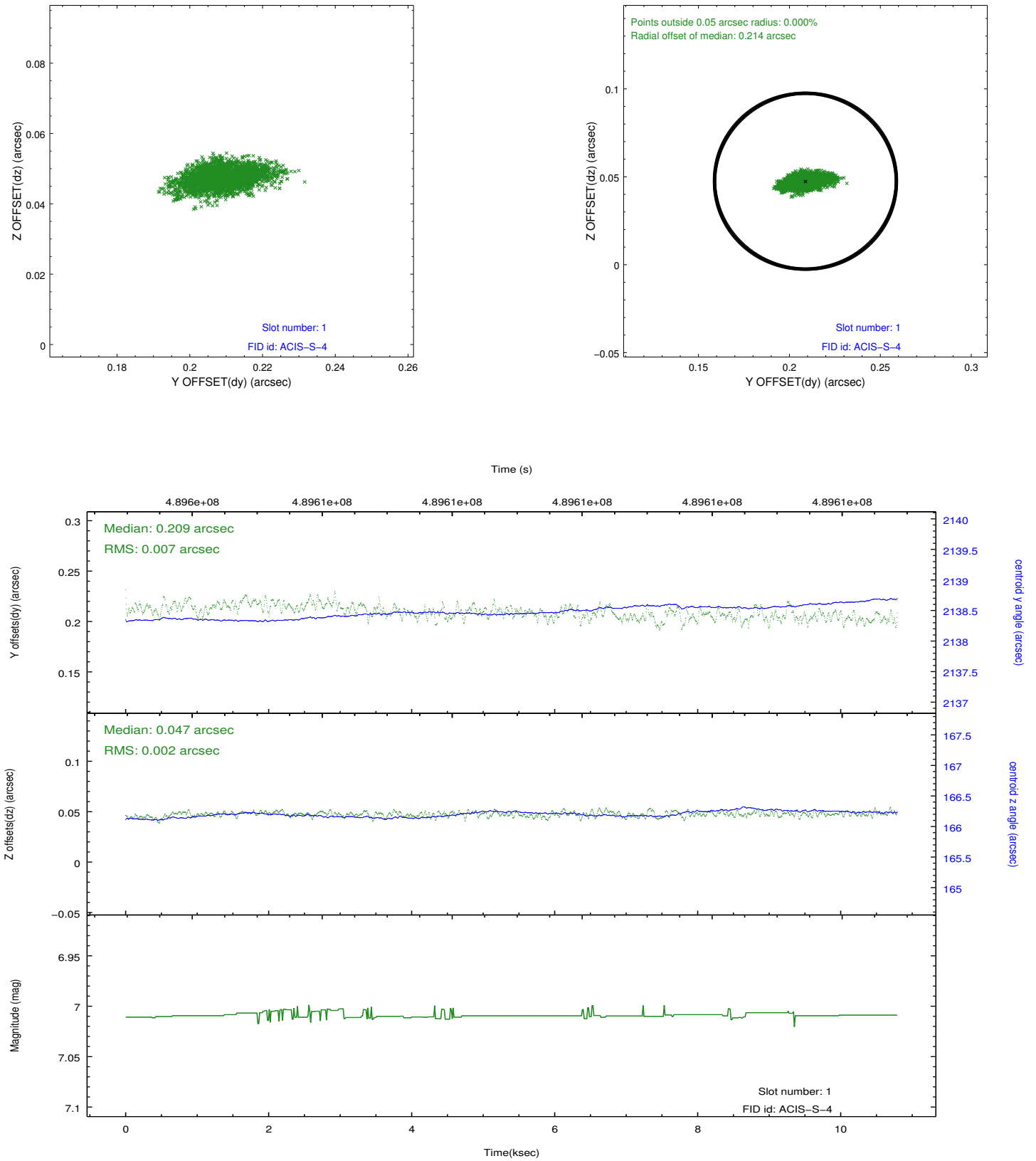


## 2.5 FID Slots

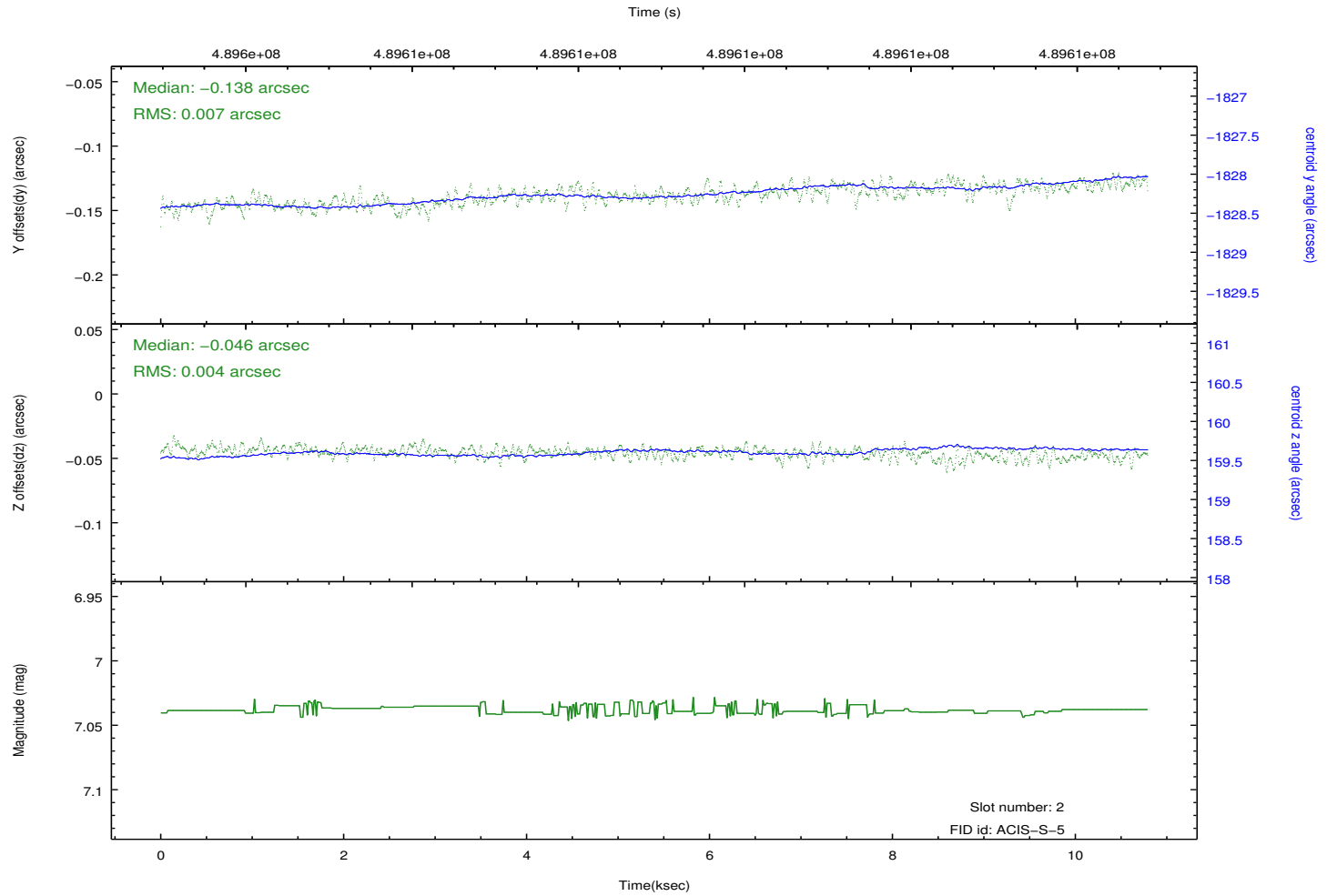
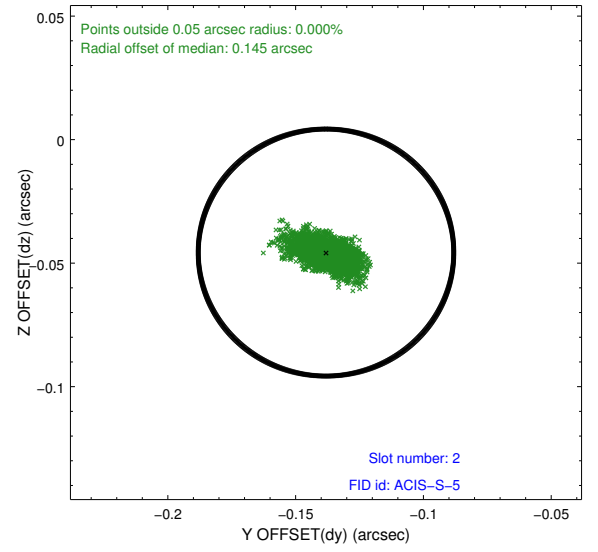
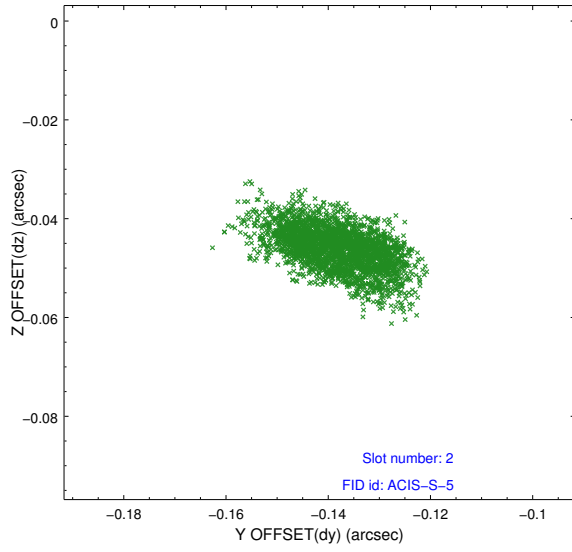
### 2.5.1 Slot 0



## 2.5.2 Slot 1



### 2.5.3 Slot 2



# A Summary

## A.1 Status

V&V Scientist	Beth Sundheim
V&V Date (YYYY-MM-DD)	2014.12.11
V&V Edition	1
V&V Disposition and Status	OK
V&V Charge Time	10.07778834343

## A.2 Comments

These data have been reprocessed with new aspect alignment calibration files that correct small mean offsets (up to 0.4 arcsecs) and improve overall astrometric accuracy. The new calibration was determined using data from the time period being reprocessed and was performed using cross-correlation of X-ray sources with radio and optical counterparts.