

V&V Reference Report

L2 ASCDS Version : 8.5.1.1

Observation 15020 - L2 Version 2
Chandra X-Ray Center

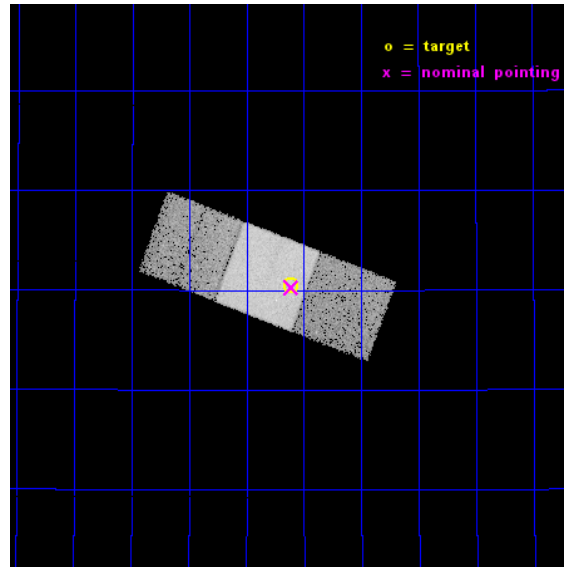
L2 Processing Date : Dec 1 2014

Contents

1	Front	2
2	OBI	3
2.1	OBI	3
2.1.1	Images	3
2.1.2	Bias	3
2.1.3	Parameters	4
2.1.4	Events	4
2.2	Compared Parameters	5
2.3	Aspect	6
2.4	Star Slots	9
2.4.1	Slot 3	9
2.4.2	Slot 4	10
2.4.3	Slot 5	11
2.4.4	Slot 6	12
2.4.5	Slot 7	13
2.5	FID Slots	14
2.5.1	Slot 0	14
2.5.2	Slot 1	15
2.5.3	Slot 2	16
A	Summary	17
A.1	Status	17
A.2	Comments	17

1 Front

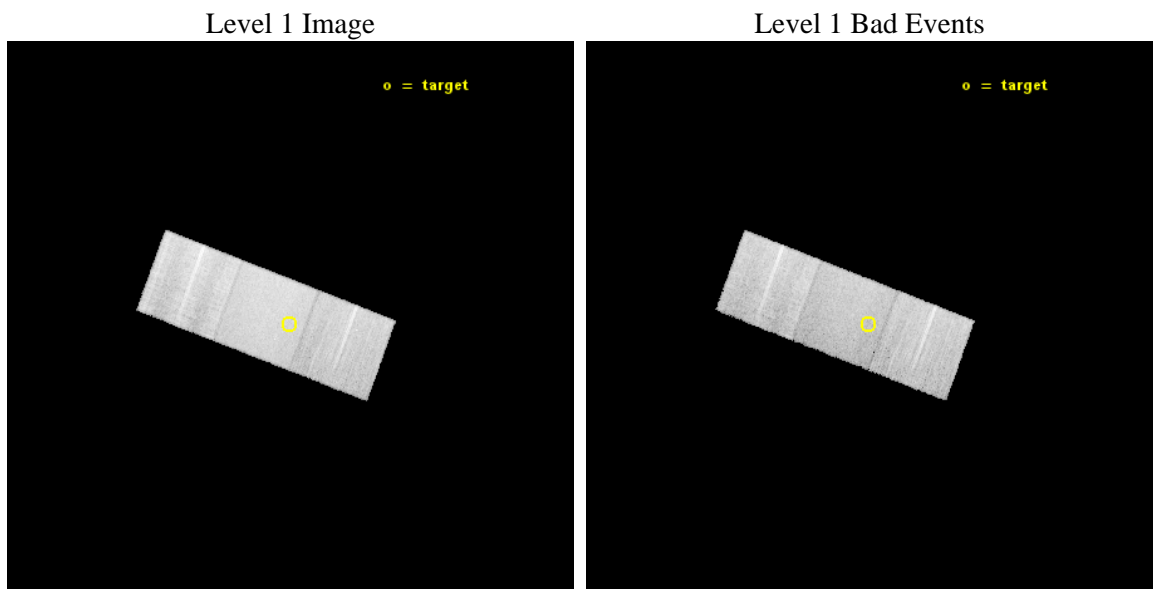
seq_num	702828	Sequence number
obs_id	15020	Observation id
title	Testing the slim disk scenario for active intermediate mass black holes	Proposal title
observer	Elena Gallo	Principal investigator
object	SDSS J095306.81+365028.0	Source name
dtcycle	0	
cycle	P	events from which exps? Prim/Second/Both
ra_targ	148.277917	Observer's specified target RA [deg]
dec_targ	36.841	Observer's specified target Dec [deg]
ra_nom	148.27717466145	Nominal RA [deg]
dec_nom	36.83803876128	Nominal Dec [deg]
roll_nom	200.70986001568	Nominal Roll [deg]
revision	2	Processing version of data
ontime	21178.299976289	Sum of GTIs [s]
livetime	20901.589895861	Livetime [s]
ontime6	21178.258936286	Sum of GTIs [s]
ontime7	21178.299976289	Sum of GTIs [s]
ontime8	21178.217896283	Sum of GTIs [s]
l2events	93304	Number of level 2 events



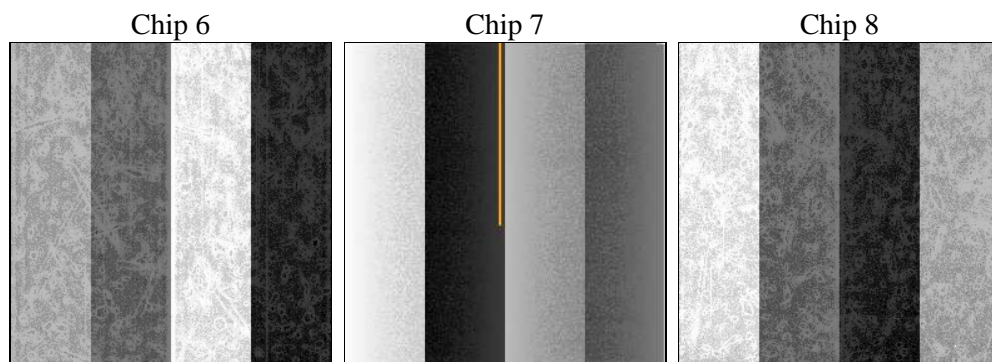
2 OBI

2.1 OBI

2.1.1 Images



2.1.2 Bias



2.1.3 Parameters

obi_num	0	Obi number	sched_exp_time	21100.000000	[s] Scheduled observation exposure time
ascdsver	10.3	Processing system revision	ontime	21178.299976289	Sum of GTIs [s]
caldsver	4.6.4	 	ontime6	21178.258936286	Sum of GTIs [s]
date	2014-12-01T17:18:23	Date and time of file creation	ontime7	21178.299976289	Sum of GTIs [s]
revision	2	Processing version of data	ontime8	21178.217896283	Sum of GTIs [s]
			l1events	433029	Number of level 1 events

2.1.4 Events

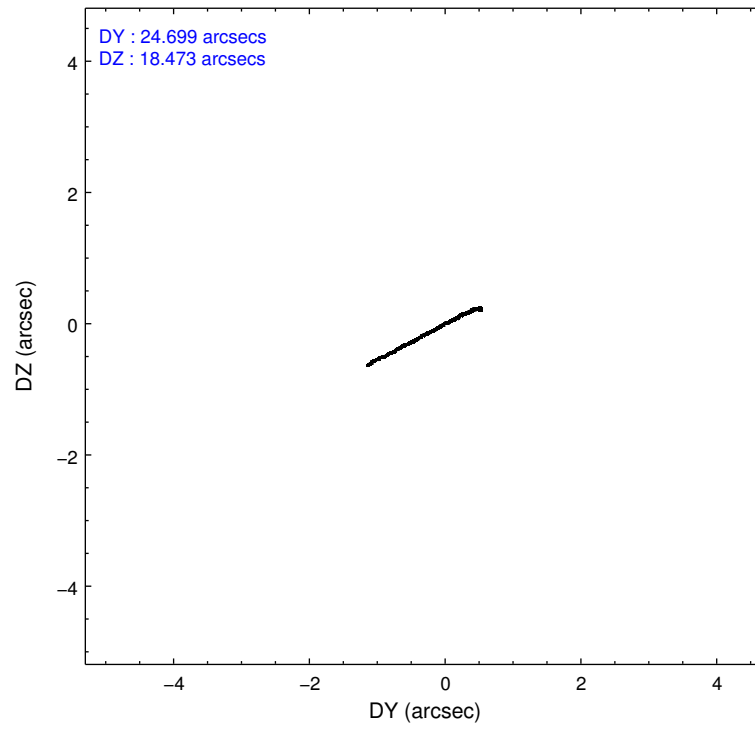
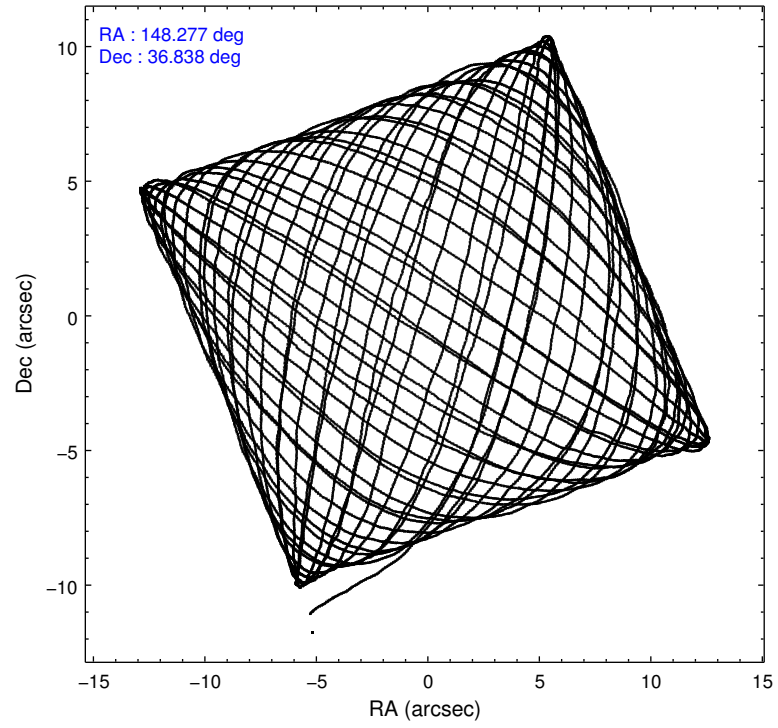
	ccd 6	ccd 7	ccd 8
level 1 events	117709	156071	159249
rejected events	103728	87457	117215
rejected %	88%	56%	73%

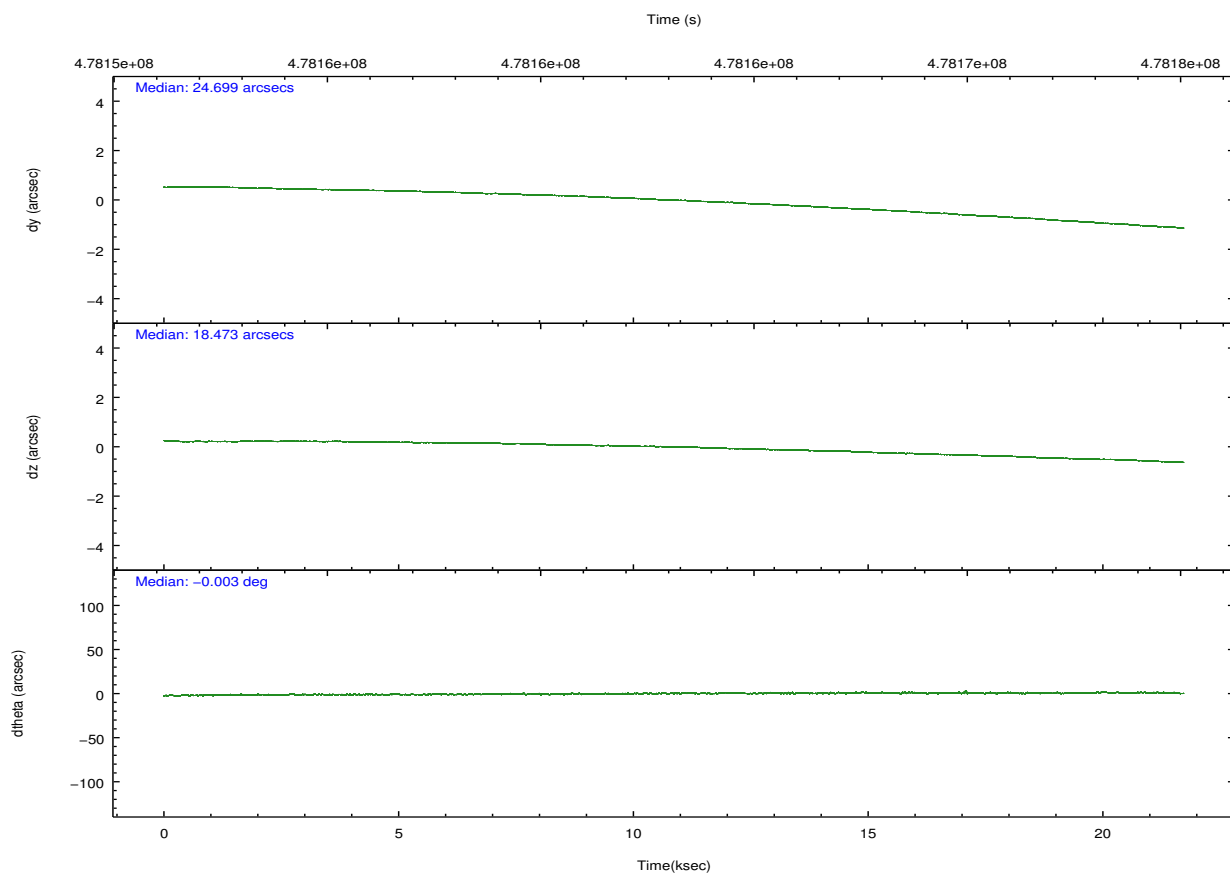
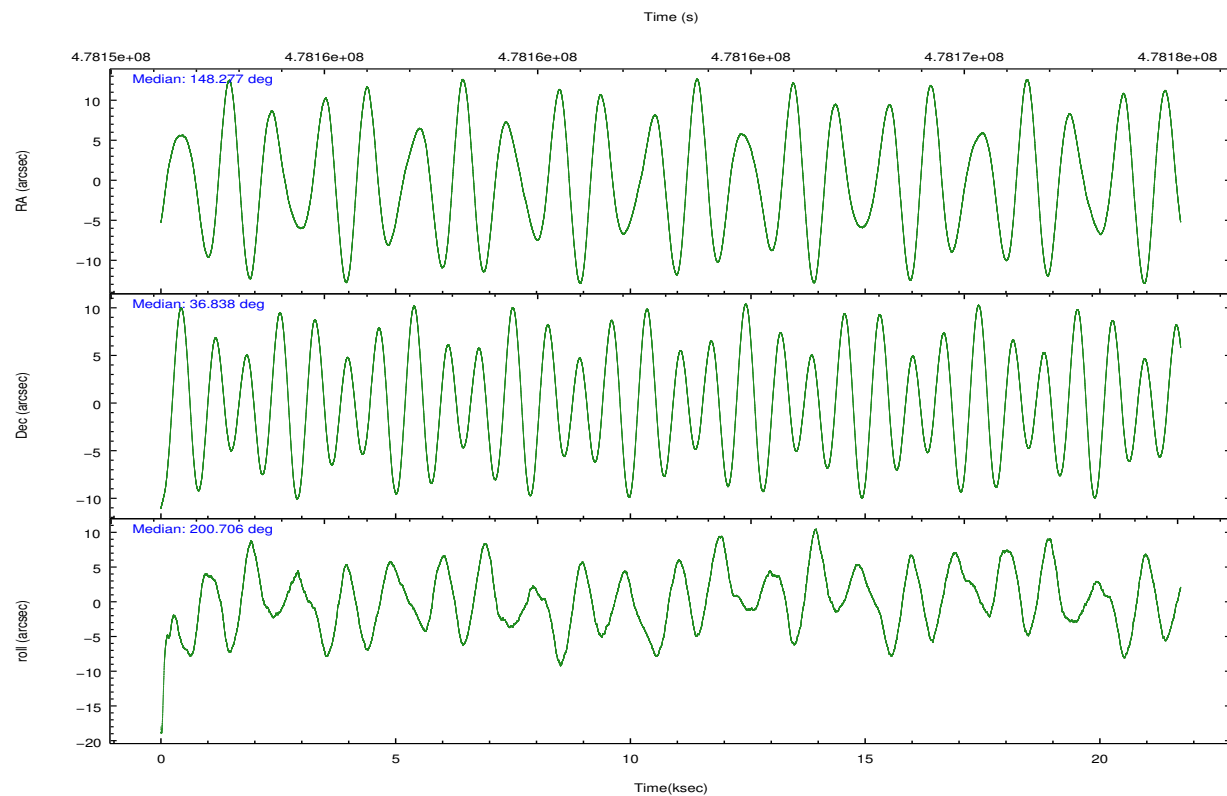
	ccd 6	ccd 7	ccd 8
grade 0 events	4684	6016	12118
	3%	3%	7%
grade 1 events	52	194	116
	0%	0%	0%
grade 2 events	3191	13990	10128
	2%	8%	6%
grade 3 events	1476	5860	4512
	1%	3%	2%
grade 4 events	1482	5887	4315
	1%	3%	2%
grade 5 events	6151	16316	8772
	5%	10%	5%
grade 6 events	3150	36878	10965
	2%	23%	6%
grade 7 events	97523	70930	108323
	82%	45%	68%

2.2 Compared Parameters

Parameter	Planned	Actual	Parameter	Planned	Actual
Instrument	ACIS	ACIS	Obspar format version number	7	7
Detector	ACIS-678	ACIS-678	Obspar file type	PREDICTED	ACTUAL
Grating	NONE	NONE	Obspar update status	NONE	UPDATED
Data mode	FAINT	FAINT	CCD I0 on	N	N
Observation mode	POINTING	POINTING	CCD I1 on	N	N
[deg] Pointing RA	148.298429	148.2771746614522	CCD I2 on	N	N
[deg] Pointing Dec	36.859429	36.83803876127985	CCD I3 on	N	N
[deg] Pointing Roll	200.540491	200.7098600156809	CCD S0 on	N	N
[mm] SIM focus pos	-0.684267	-0.6828225247311905	CCD S1 on	N	N
[mm] SIM defocus	0	0.001444936568705701	CCD S2 on	O1	Y
[mm] SIM translation stage pos	-190.132523	-190.1400660498719	CCD S3 on	Y	Y
[mm] SIM translation stage offset	0	0.00754346686406393	CCD S4 on	O2	Y
[s] Observation start time (MET)	478152876.184000	478151840.49848	CCD S5 on	N	N
Observation start date	2013-02-25T04:13:29	2013-02-25T03:57:20	Number of optional ACIS chips dropped	0	0
[s] Observation end time (MET)	478173976.184000	478174774.87472	On-chip summing requested	N	N
Observation end date	2013-02-25T10:05:09	2013-02-25T10:19:34	Subarray requested	NONE	NONE
Read mode	TIMED	TIMED	Alternating exposures requested	N	N
			[s] Primary exposure time	0.000000	3.1

2.3 Aspect



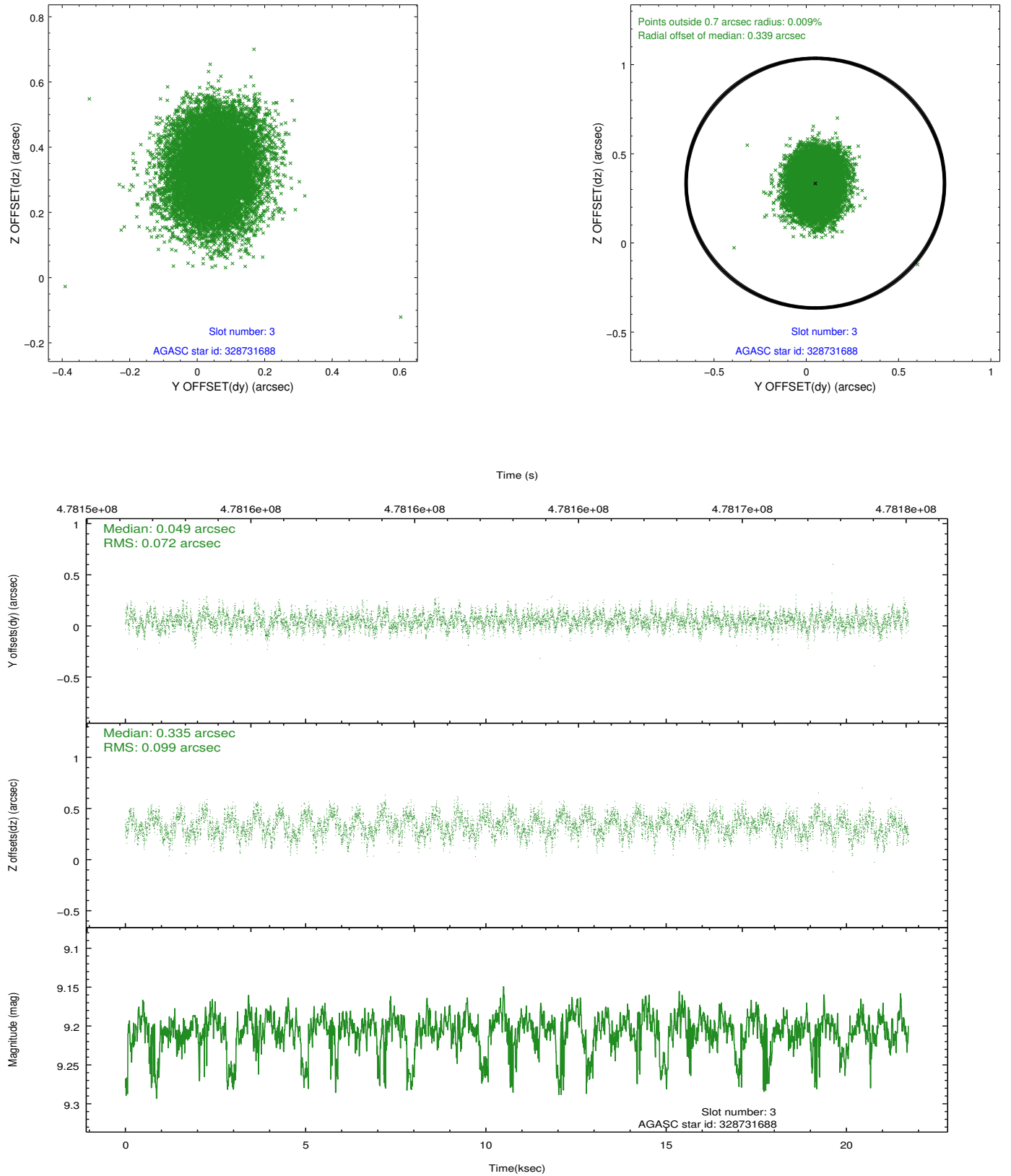


Slot Statistics

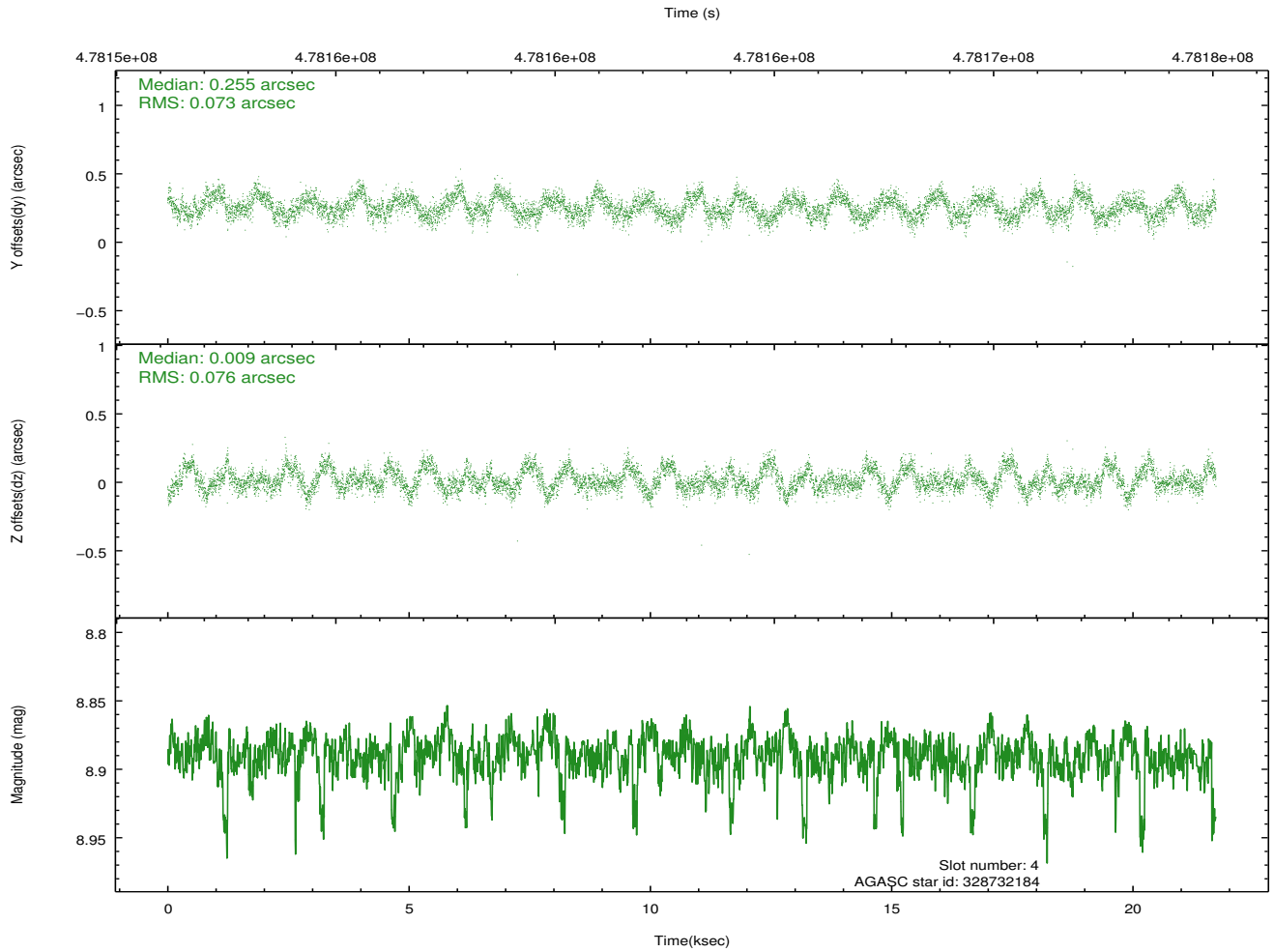
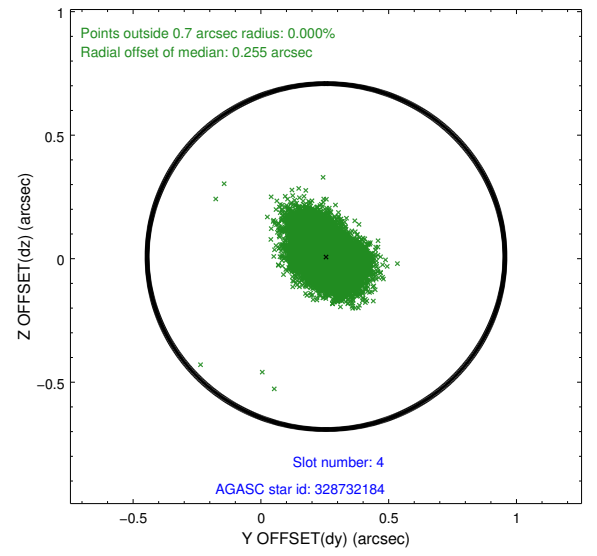
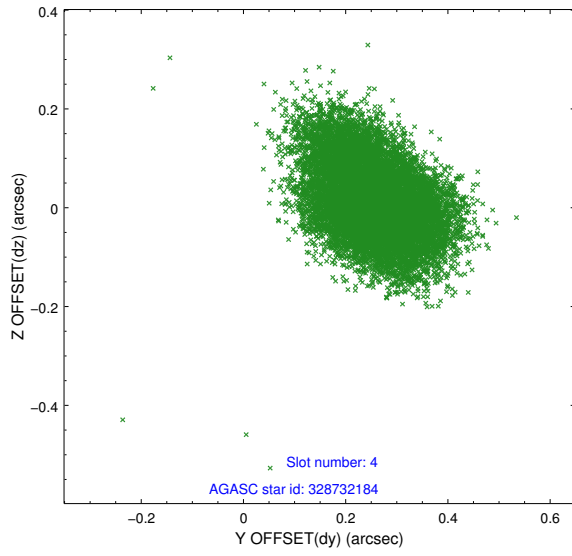
slot	status	used	id	mag	n_pts	med_dy	med_dz	dr1	dr2	ra	dec	mean_y	mean_z
0	FID		ACIS-S-2	6.99	5298	-0.174	-0.074	0.015	0.040	0.000000	0.000000	-778.02	-1739.93
1	FID		ACIS-S-4	7.08	5298	0.361	0.103	0.010	0.023	0.000000	0.000000	2135.75	168.51
2	FID		ACIS-S-5	7.10	5298	-0.222	-0.021	0.016	0.033	0.000000	0.000000	-1830.68	162.32
3	GUIDE	used	328731688	9.20	10578	0.049	0.335	0.132	0.207	148.714472	37.415082	-1816.48	-1457.61
4	GUIDE	used	328732184	8.89	10571	0.255	0.009	0.113	0.178	149.197726	36.777984	-2329.47	1173.16
5	GUIDE	used	328732328	9.63	10554	0.092	0.283	0.177	0.280	148.614324	37.478180	-1625.29	-1768.86
6	GUIDE	used	328735552	9.83	10519	-0.225	-0.422	0.240	0.367	149.103495	36.605146	-1861.31	1664.19
7	GUIDE	used	328737624	7.86	10591	-0.177	-0.212	0.087	0.136	148.067881	36.300288	1333.44	1650.99

2.4 Star Slots

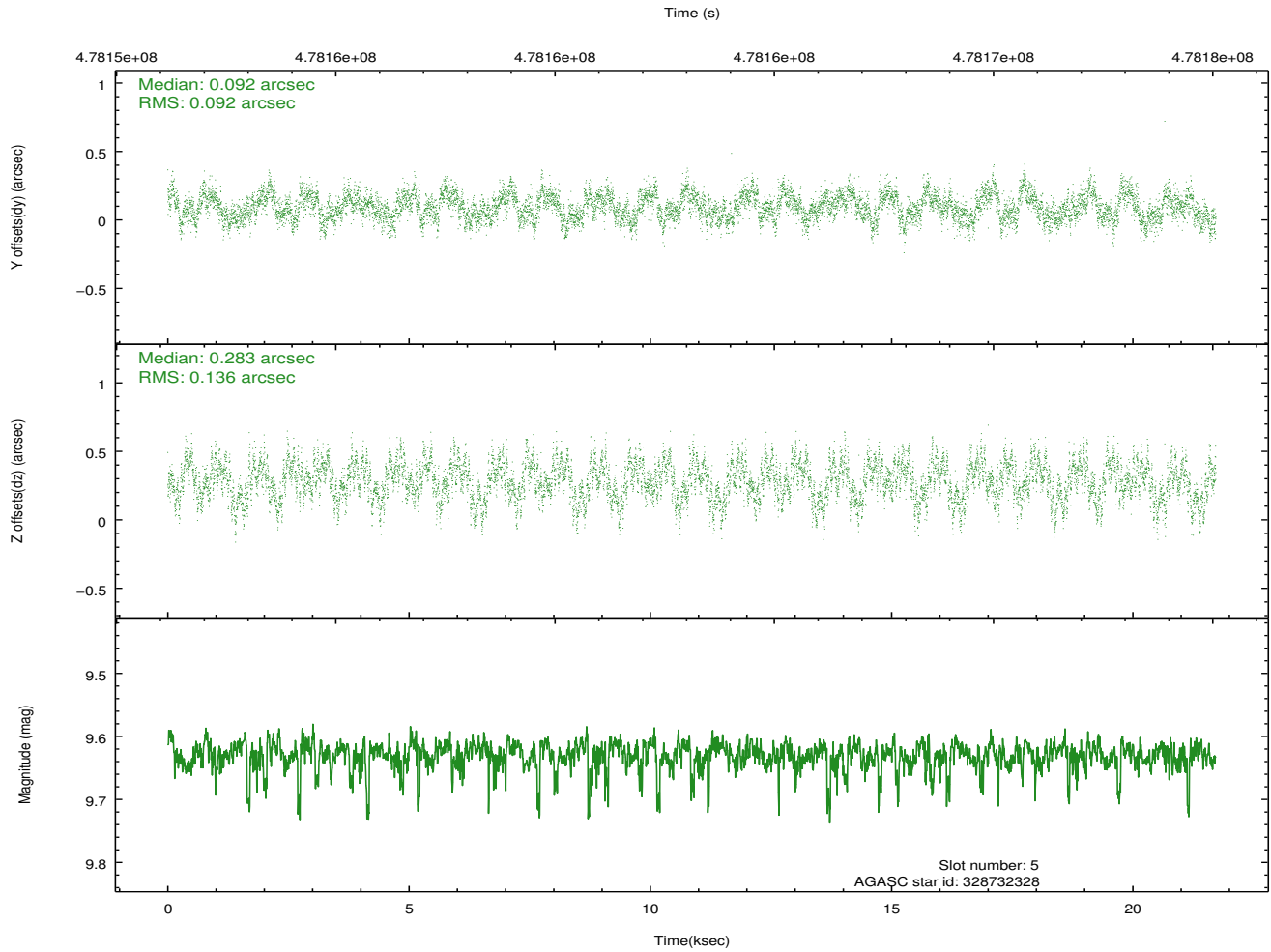
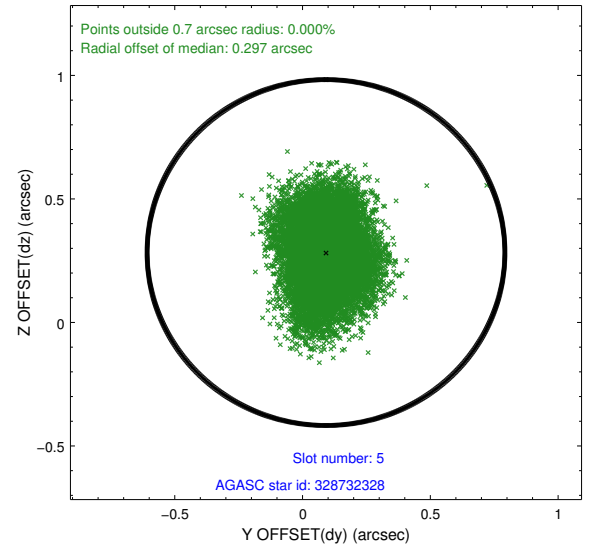
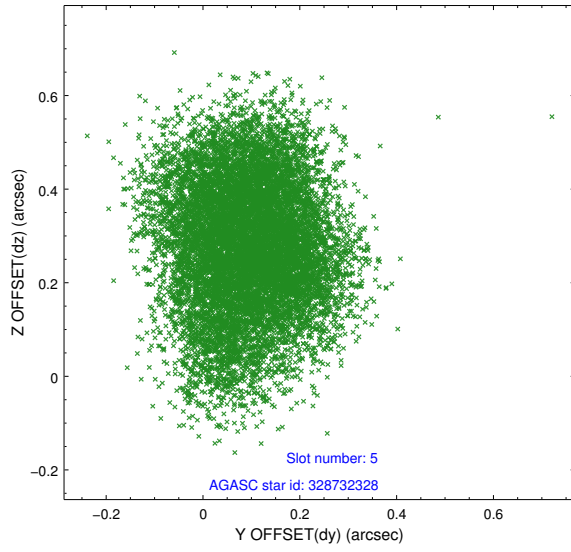
2.4.1 Slot 3



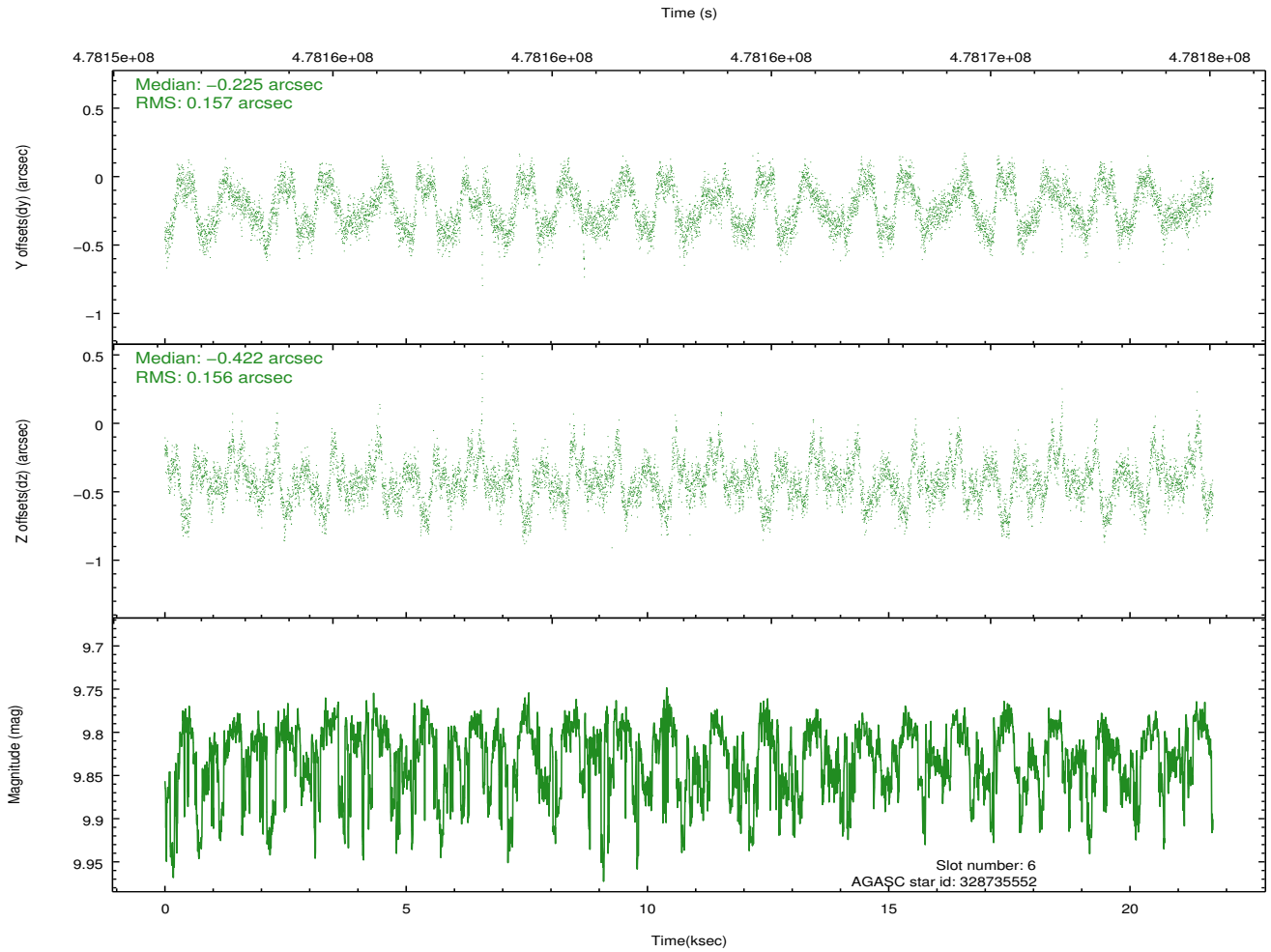
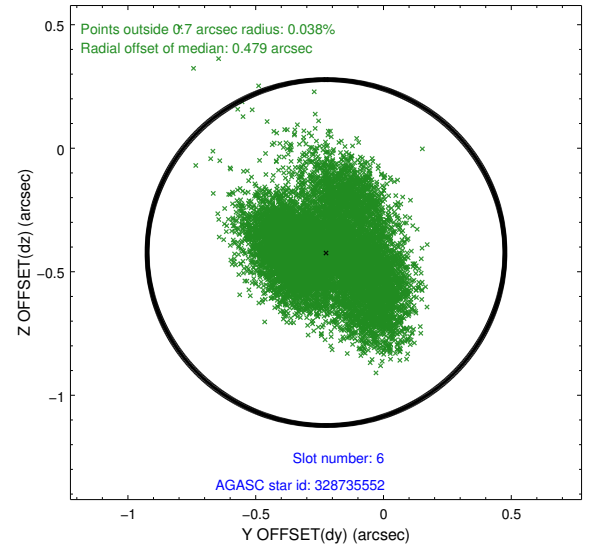
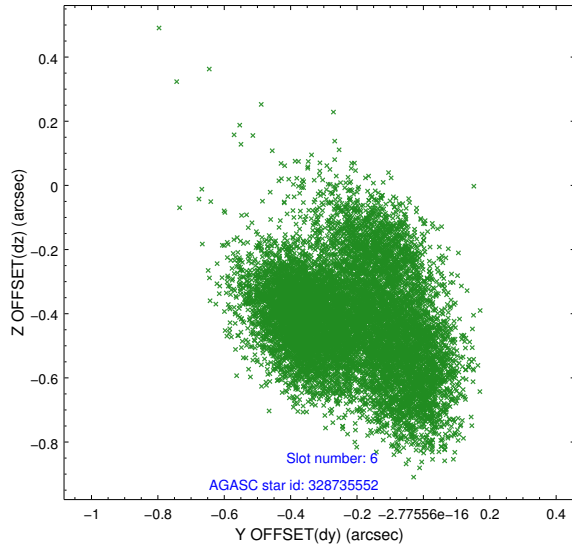
2.4.2 Slot 4



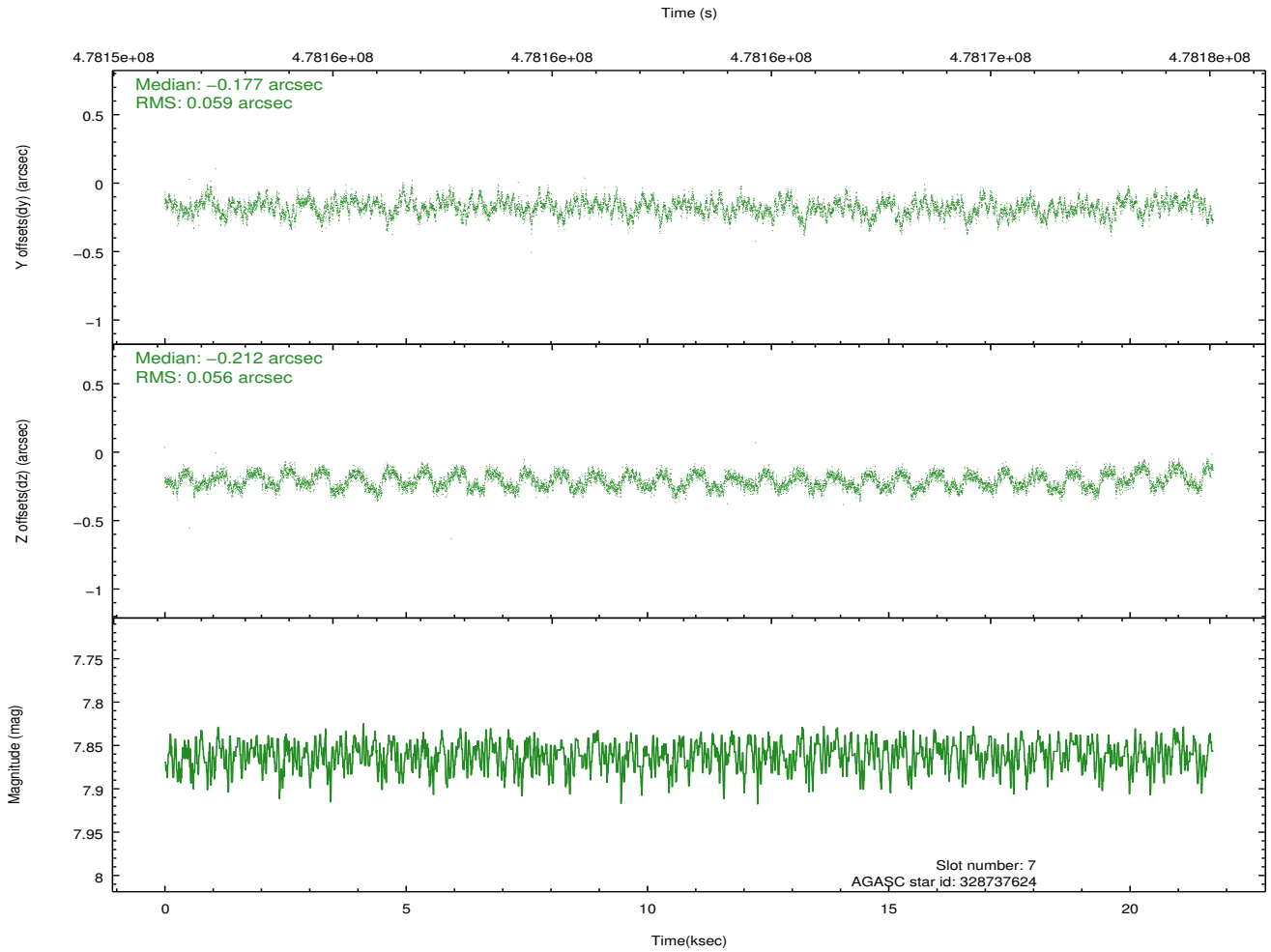
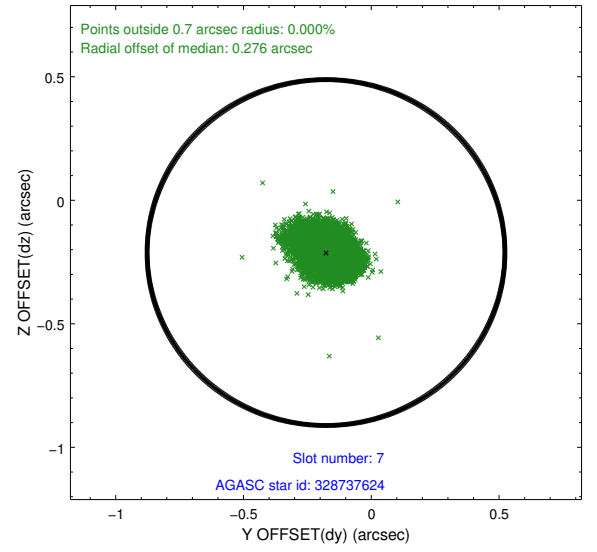
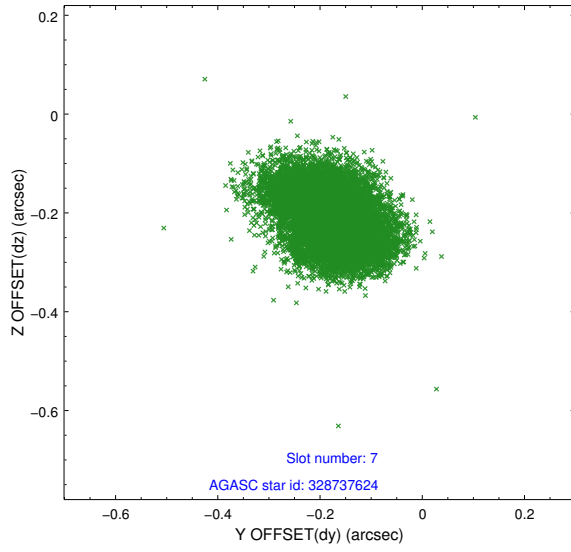
2.4.3 Slot 5



2.4.4 Slot 6

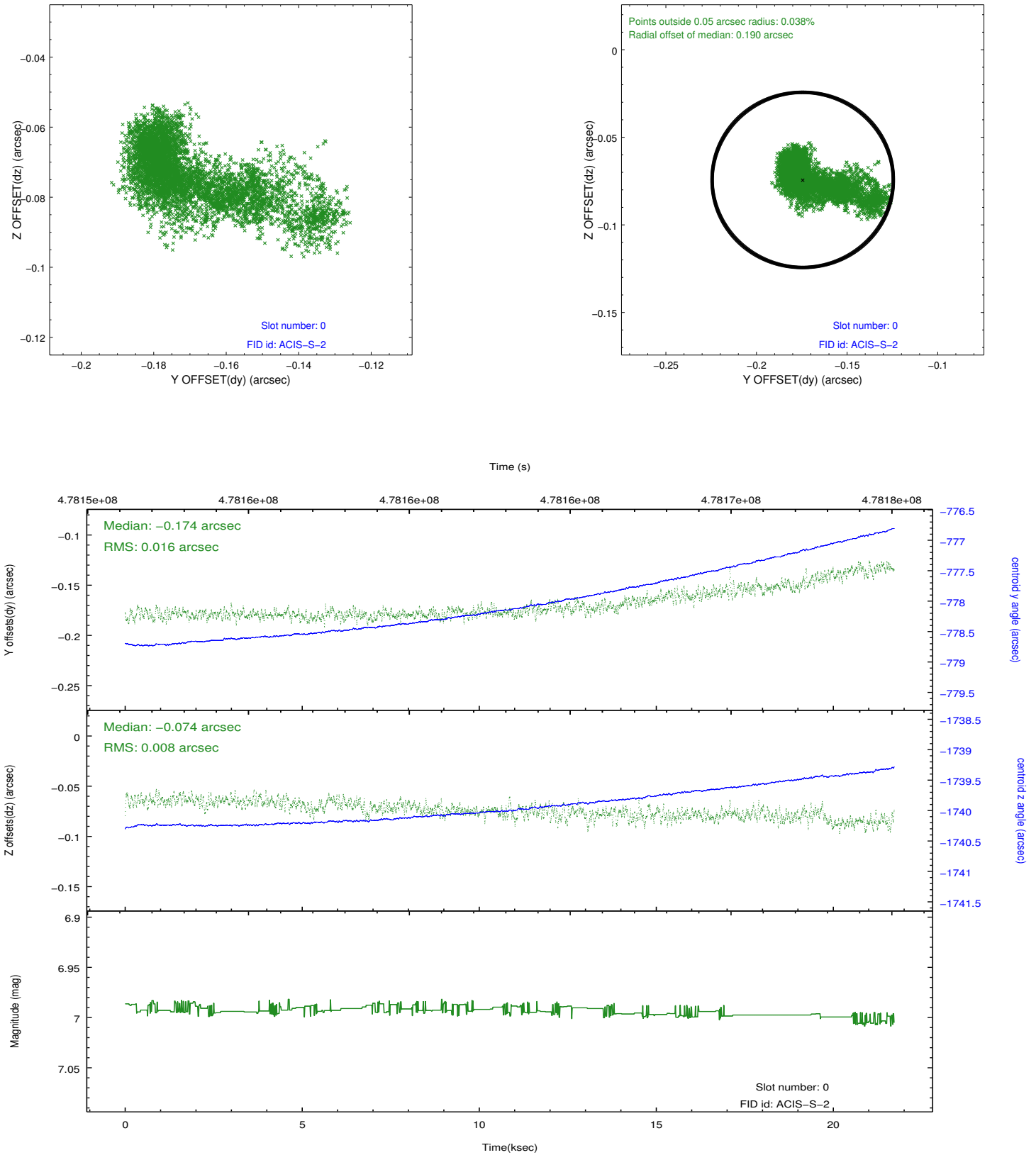


2.4.5 Slot 7

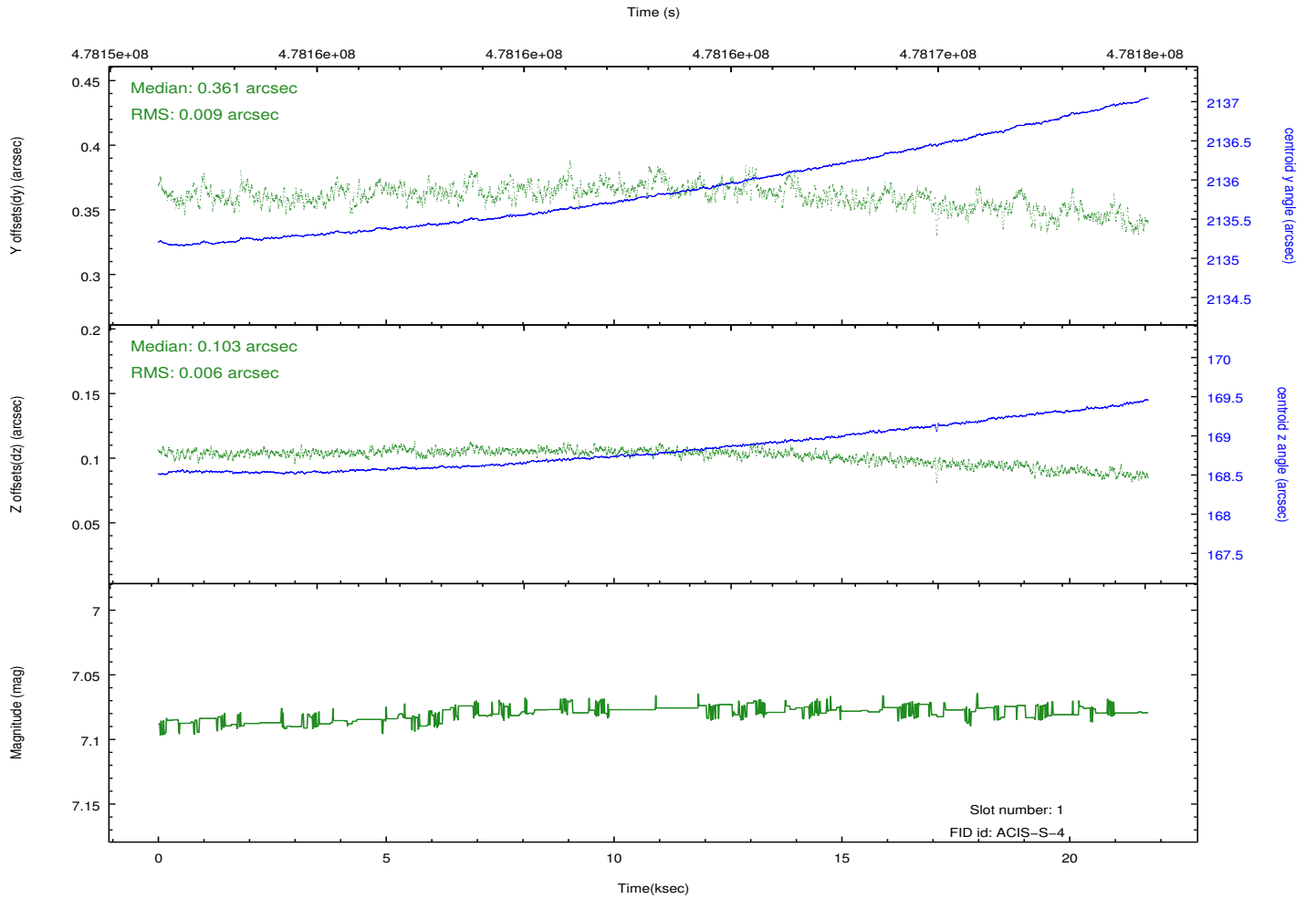
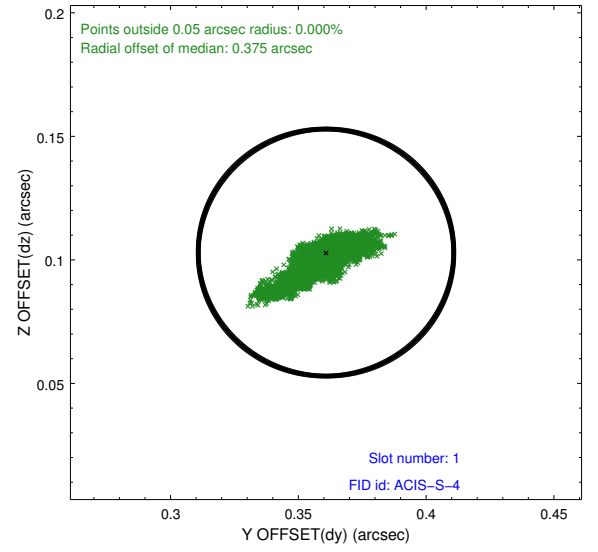
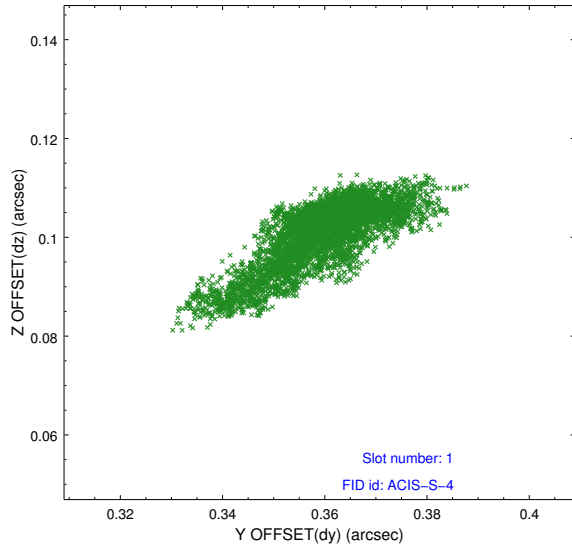


2.5 FID Slots

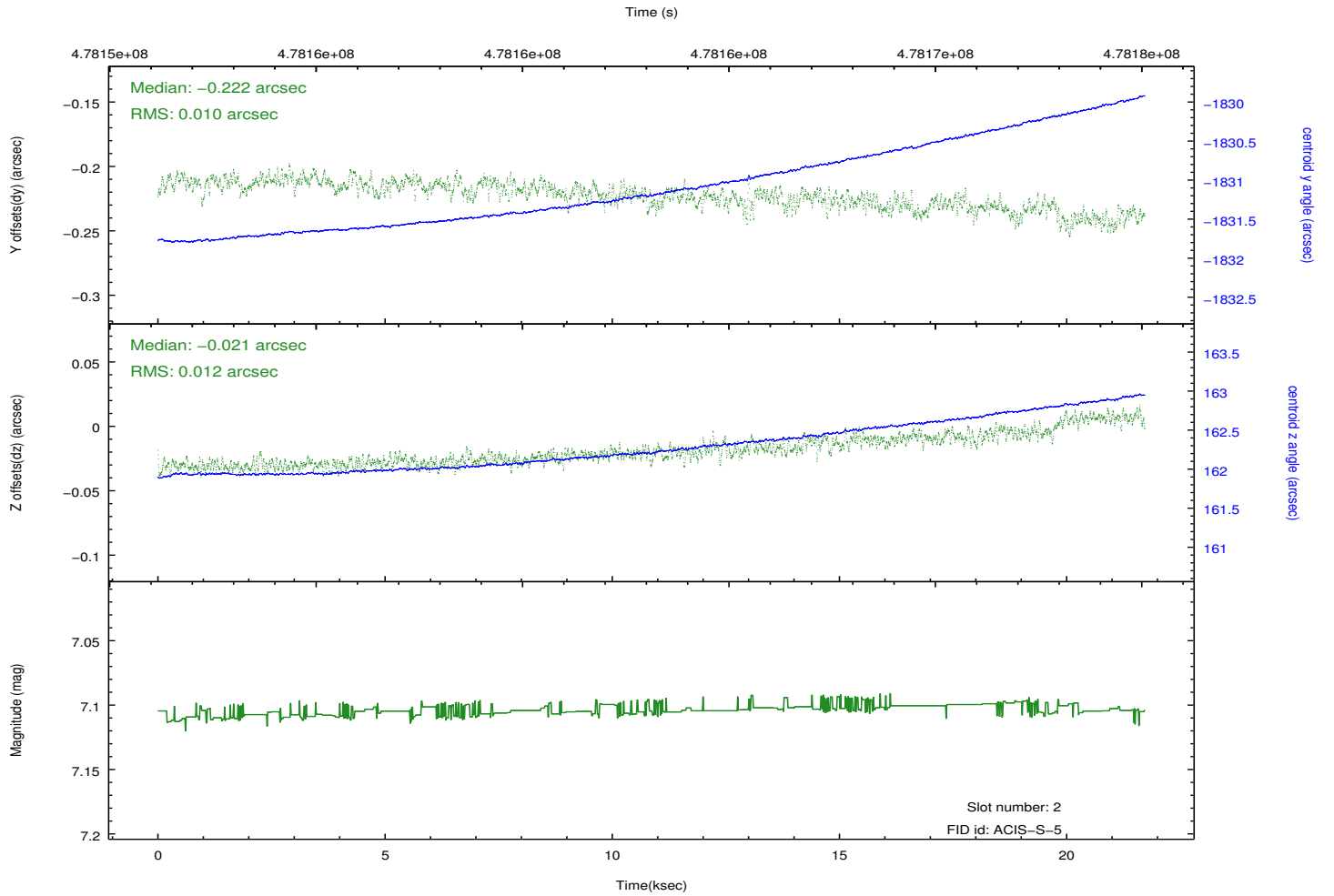
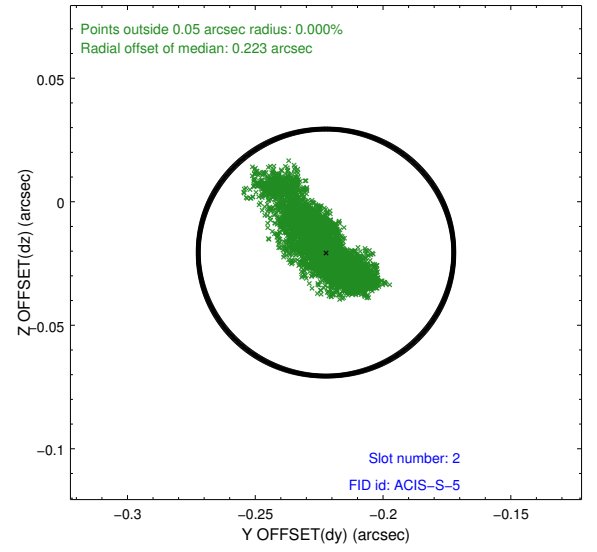
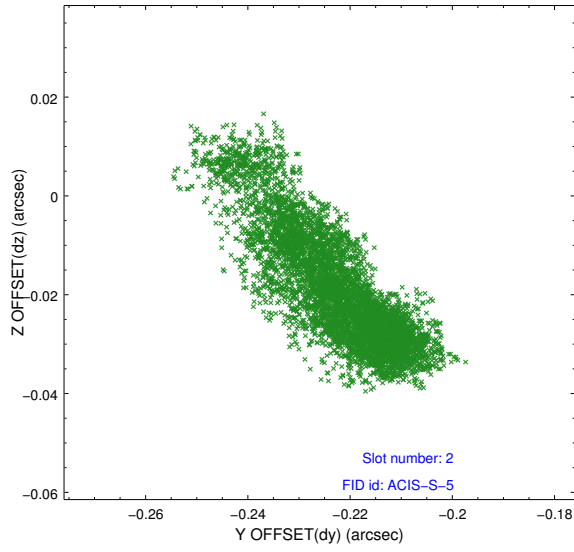
2.5.1 Slot 0



2.5.2 Slot 1



2.5.3 Slot 2



A Summary

A.1 Status

V&V Scientist	Beth Sundheim
V&V Date (YYYY-MM-DD)	2014.12.09
V&V Edition	1
V&V Disposition and Status	OK
V&V Charge Time	21.178299976289

A.2 Comments

These data have been reprocessed with new aspect alignment calibration files that correct small mean offsets (up to 0.4 arcsecs) and improve overall astrometric accuracy. The new calibration was determined using data from the time period being reprocessed and was performed using cross-correlation of X-ray sources with radio and optical counterparts.