

V&V Reference Report

L2 ASCDS Version : 8.4.5

Observation 15017 - L2 Version 2
Chandra X-Ray Center

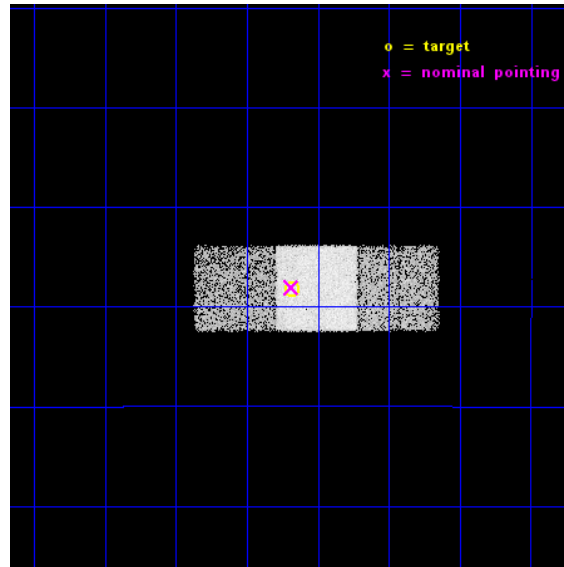
L2 Processing Date : Nov 29 2014

Contents

1	Front	2
2	OBI	3
2.1	OBI	3
2.1.1	Images	3
2.1.2	Bias	3
2.1.3	Parameters	4
2.1.4	Events	4
2.2	Compared Parameters	5
2.3	Aspect	6
2.4	Star Slots	9
2.4.1	Slot 3	9
2.4.2	Slot 4	10
2.4.3	Slot 5	11
2.4.4	Slot 6	12
2.4.5	Slot 7	13
2.5	FID Slots	14
2.5.1	Slot 0	14
2.5.2	Slot 1	15
2.5.3	Slot 2	16
A	Summary	17
A.1	Status	17
A.2	Comments	17

1 Front

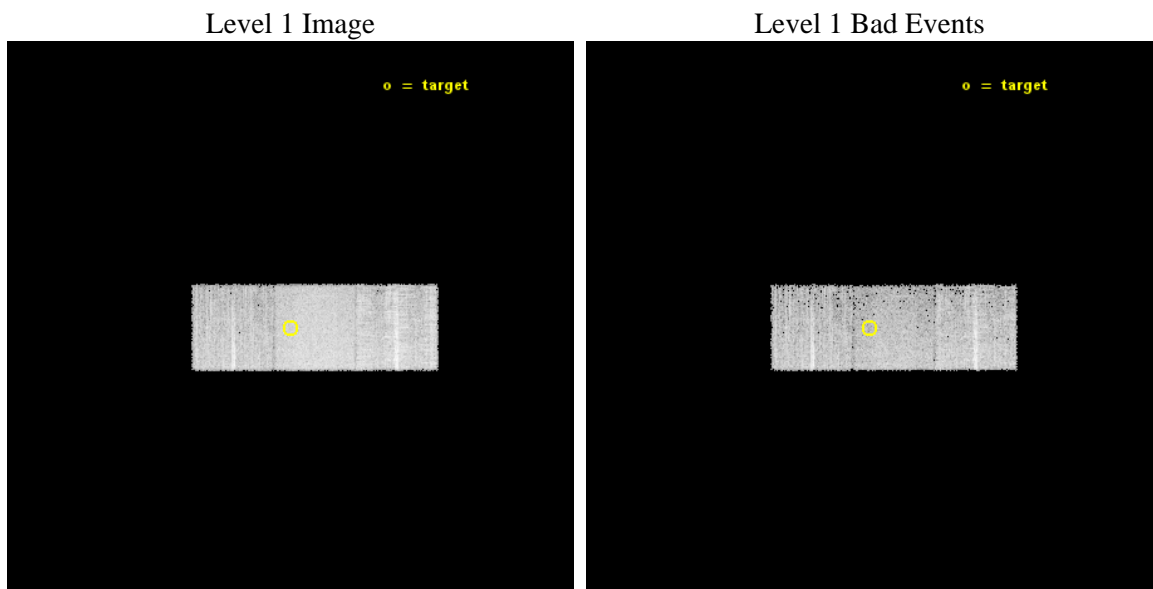
seq_num	702825	Sequence number
obs_id	15017	Observation id
title	Testing the slim disk scenario for active intermediate mass black holes	Proposal title
observer	Elena Gallo	Principal investigator
object	SDSS J023310.79-074813.3	Source name
dtcycle	0	
cycle	P	events from which exps? Prim/Second/Both
ra_targ	38.295	Observer's specified target RA [deg]
dec_targ	-7.803722	Observer's specified target Dec [deg]
ra_nom	38.296611955143	Nominal RA [deg]
dec_nom	-7.8011187097801	Nominal Dec [deg]
roll_nom	359.87943531608	Nominal Roll [deg]
revision	2	Processing version of data
ontime	10079.807788551	Sum of GTIs [s]
livetime	9948.1076791469	Livetime [s]
ontime6	10079.766748548	Sum of GTIs [s]
ontime7	10079.807788551	Sum of GTIs [s]
ontime8	10079.725708544	Sum of GTIs [s]
l2events	42486	Number of level 2 events



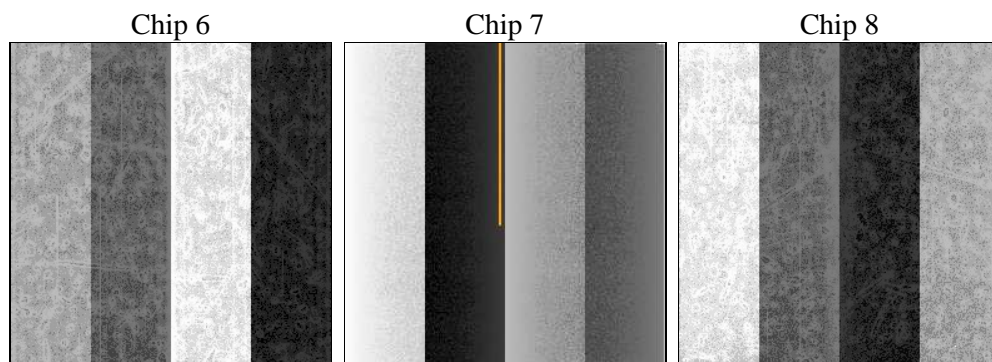
2 OBI

2.1 OBI

2.1.1 Images



2.1.2 Bias



2.1.3 Parameters

obi_num	0	Obi number	sched_exp_time	10000.000000	[s] Scheduled observation exposure time
ascdsver	10.3	Processing system revision	ontime	10079.807788551	Sum of GTIs [s]
caldbver	4.6.4	 	ontime6	10079.766748548	Sum of GTIs [s]
date	2014-11-29T09:00:18	Date and time of file creation	ontime7	10079.807788551	Sum of GTIs [s]
revision	2	Processing version of data	ontime8	10079.725708544	Sum of GTIs [s]
			l1events	189754	Number of level 1 events

2.1.4 Events

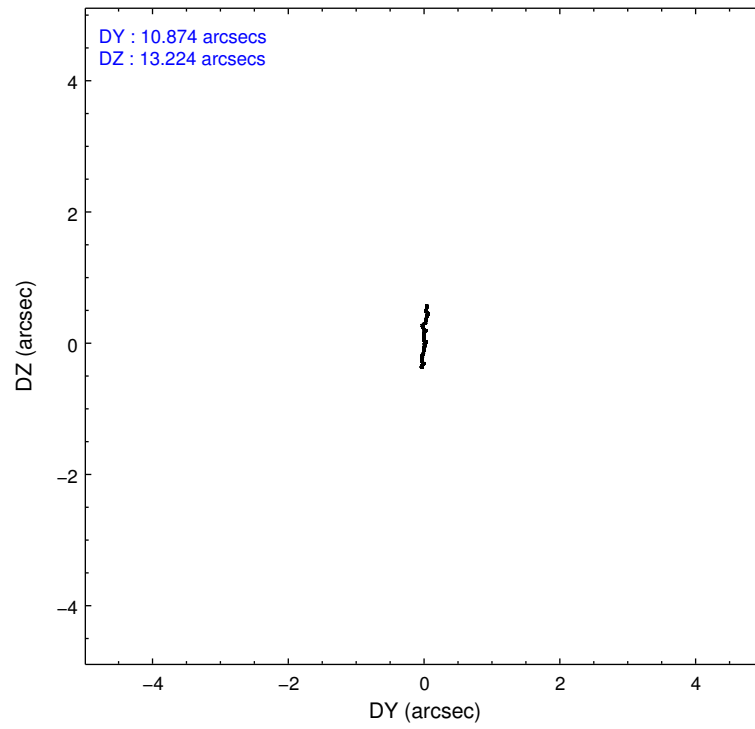
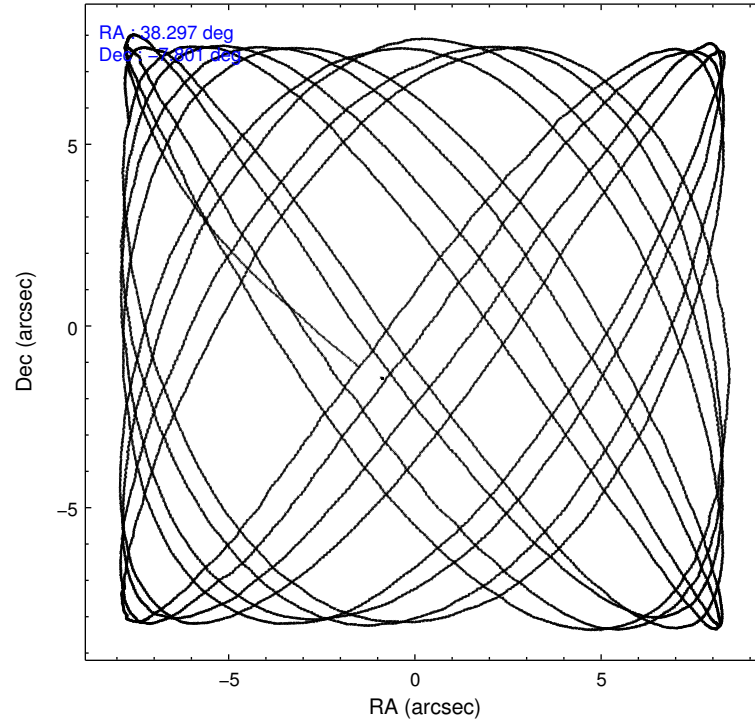
	ccd 6	ccd 7	ccd 8
level 1 events	50570	70391	68793
rejected events	44228	39423	50456
rejected %	87%	56%	73%

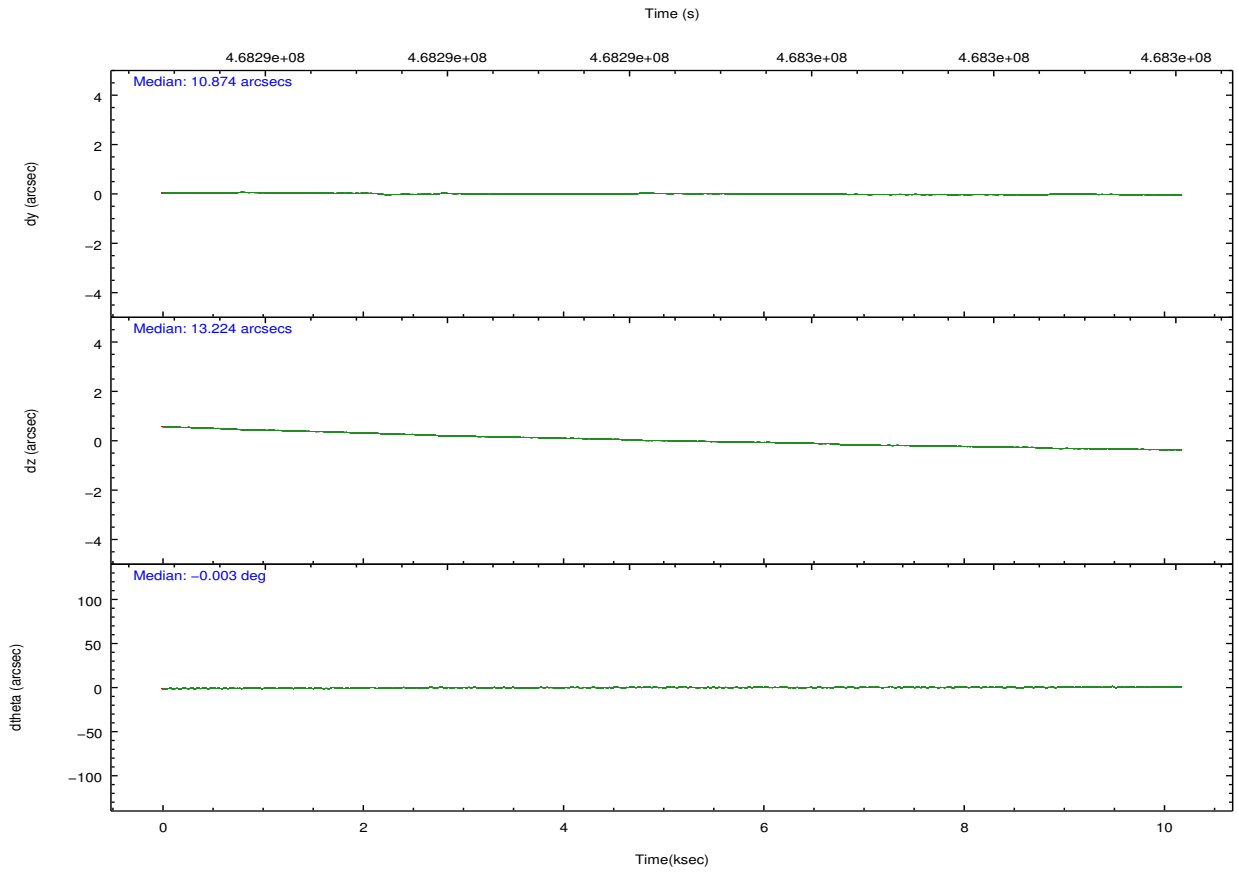
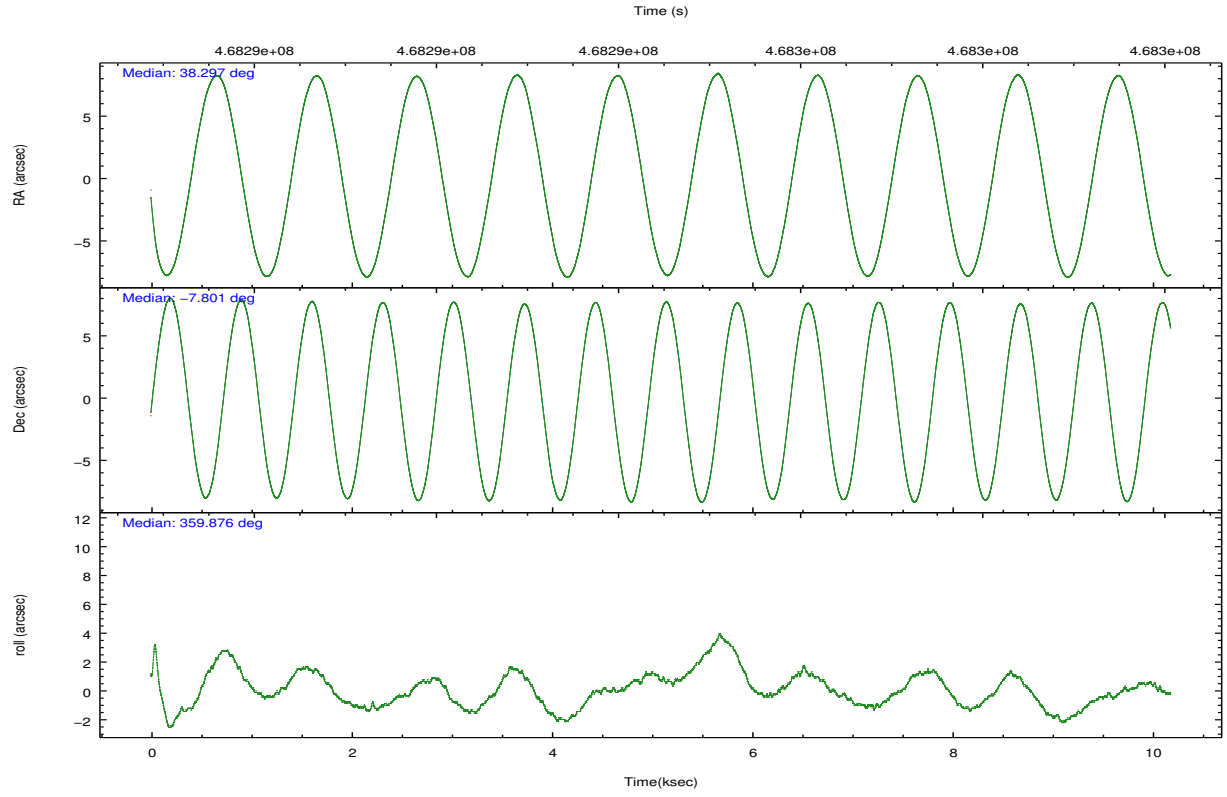
	ccd 6	ccd 7	ccd 8
grade 0 events	2164	2656	5431
	4%	3%	7%
grade 1 events	24	73	65
	0%	0%	0%
grade 2 events	1474	6378	4323
	2%	9%	6%
grade 3 events	630	2628	1856
	1%	3%	2%
grade 4 events	620	2645	1743
	1%	3%	2%
grade 5 events	2726	7296	3831
	5%	10%	5%
grade 6 events	1456	16676	4988
	2%	23%	7%
grade 7 events	41476	32039	46556
	82%	45%	67%

2.2 Compared Parameters

Parameter	Planned	Actual	Parameter	Planned	Actual
Instrument	ACIS	ACIS	Obspar format version number	7	7
Detector	ACIS-678	ACIS-678	Obspar file type	PREDICTED	ACTUAL
Grating	NONE	NONE	Obspar update status	NONE	UPDATED
Data mode	FAINT	FAINT	CCD I0 on	N	N
Observation mode	POINTING	POINTING	CCD I1 on	N	N
[deg] Pointing RA	38.272905	38.29661195514336	CCD I2 on	N	N
[deg] Pointing Dec	-7.815113	-7.801118709780106	CCD I3 on	N	N
[deg] Pointing Roll	359.719592	359.879435316077	CCD S0 on	N	N
[mm] SIM focus pos	-0.684267	-0.6828225247311905	CCD S1 on	N	N
[mm] SIM defocus	0	0.001444936568705701	CCD S2 on	O1	Y
[mm] SIM translation stage pos	-190.132523	-190.1425803651734	CCD S3 on	Y	Y
[mm] SIM translation stage offset	0	0.01005778216563158	CCD S4 on	O2	Y
[s] Observation start time (MET)	468289549.184000	468288384.892	CCD S5 on	N	N
Observation start date	2012-11-03T00:24:42	2012-11-03T00:06:24	Number of optional ACIS chips dropped	0	0
[s] Observation end time (MET)	468299549.184000	468300237.48014	On-chip summing requested	N	N
Observation end date	2012-11-03T03:11:22	2012-11-03T03:23:57	Subarray requested	NONE	NONE
Read mode	TIMED	TIMED	Alternating exposures requested	N	N
			[s] Primary exposure time	0.000000	3.1

2.3 Aspect



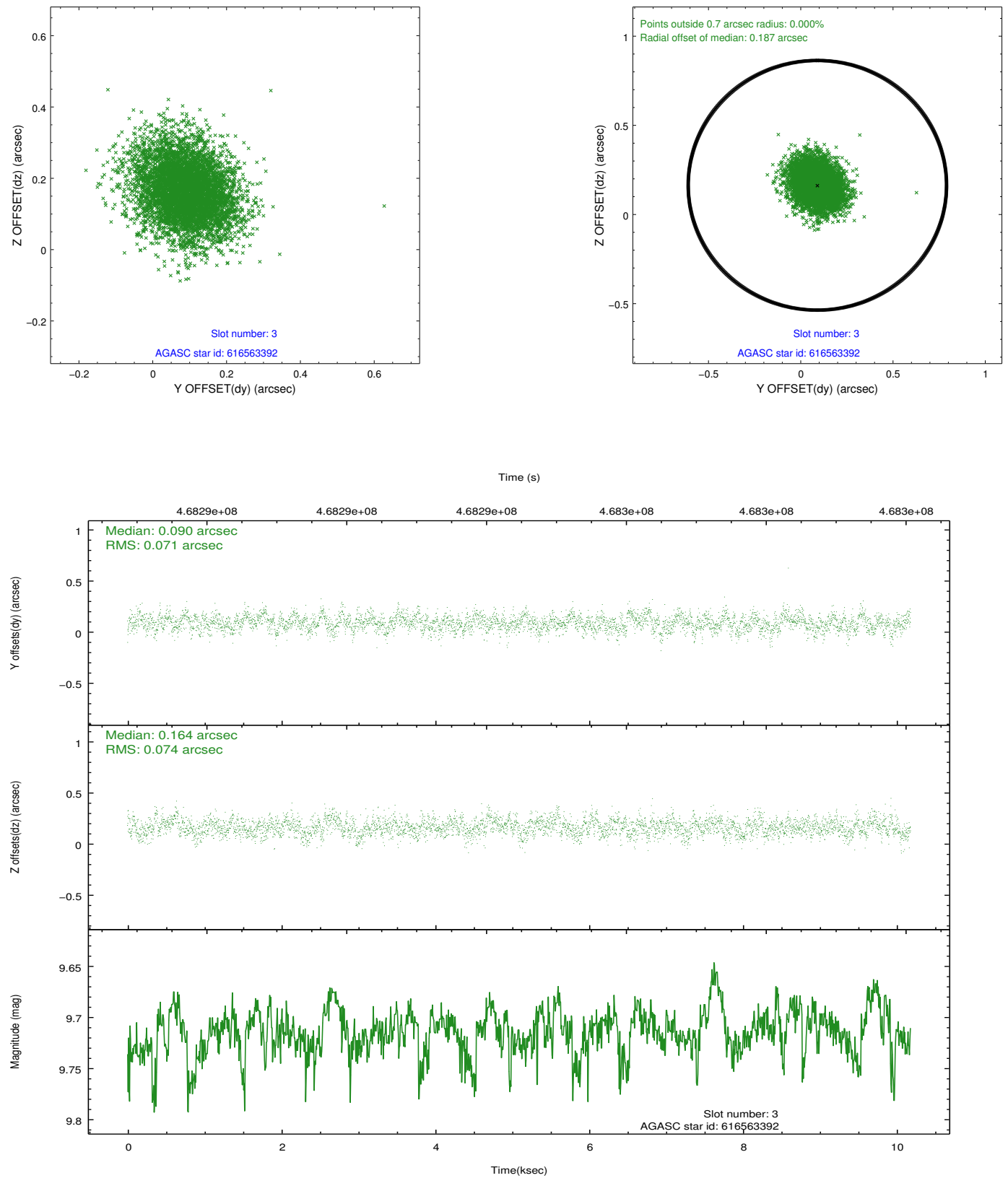


Slot Statistics

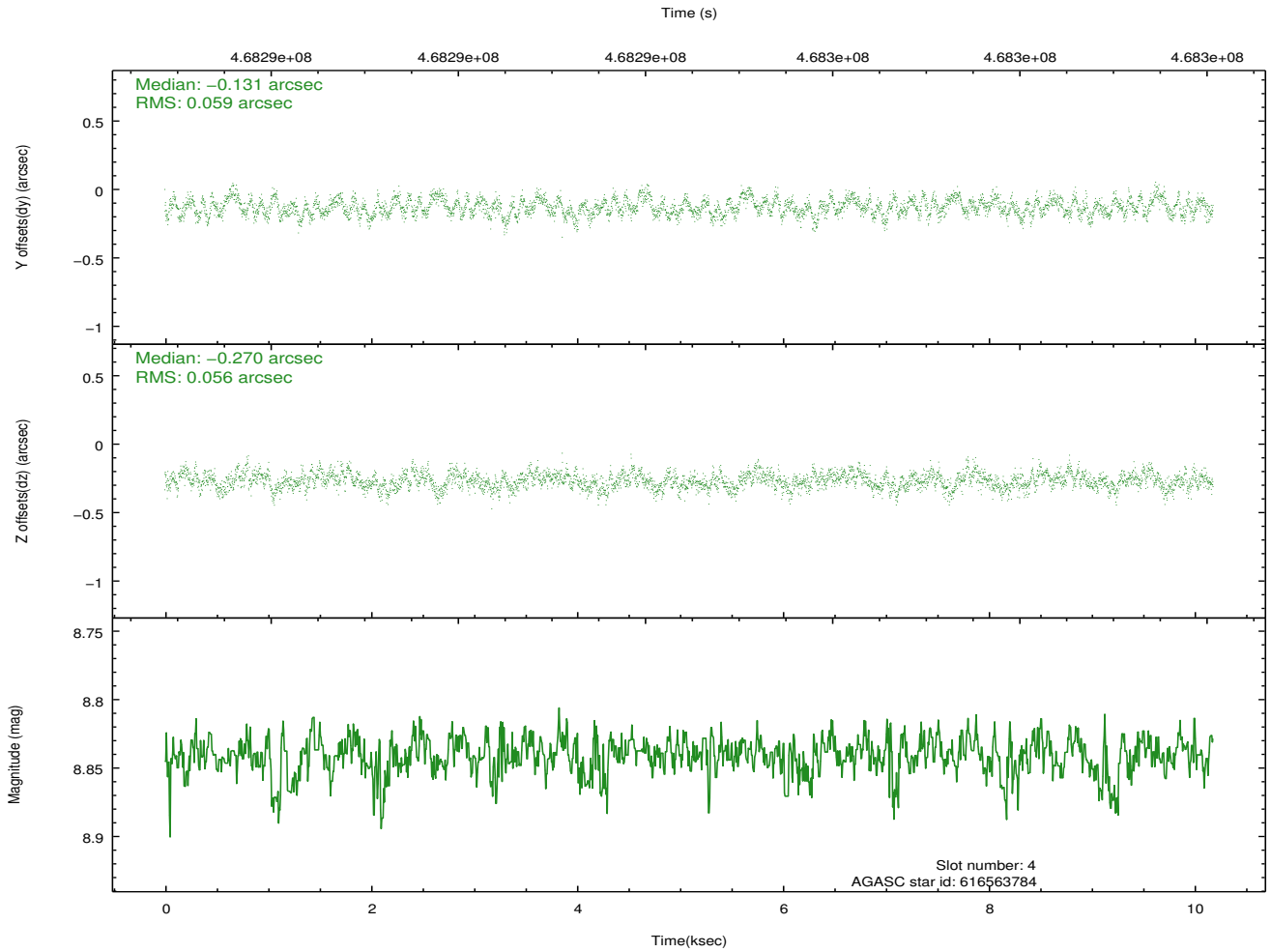
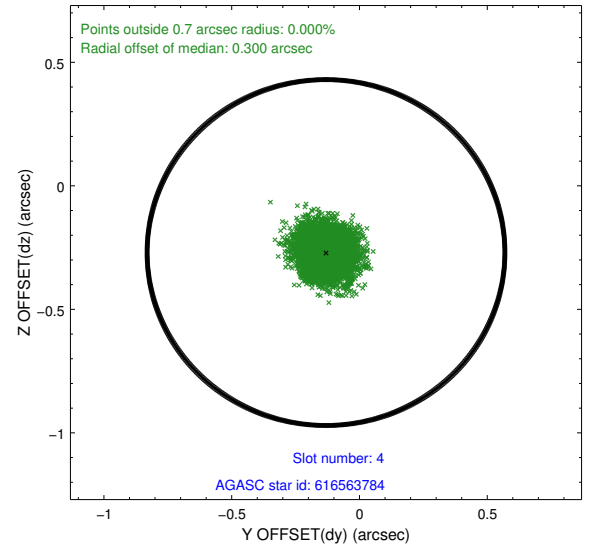
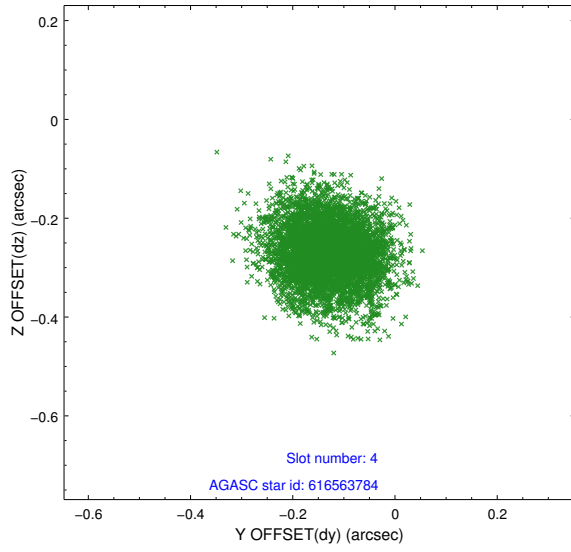
slot	status	used	id	mag	n_pts	med_dy	med_dz	dr1	dr2	ra	dec	mean_y	mean_z
0	FID		ACIS-S-2	6.94	2484	-0.046	-0.024	0.007	0.012	0.000000	0.000000	-763.81	-1734.54
1	FID		ACIS-S-4	7.03	2484	0.141	0.029	0.007	0.014	0.000000	0.000000	2149.45	173.40
2	FID		ACIS-S-5	7.06	2484	-0.126	0.004	0.007	0.012	0.000000	0.000000	-1816.03	167.71
3	GUIDE	used	616563392	9.71	4962	0.090	0.164	0.108	0.180	38.494251	-7.399794	783.32	1498.89
4	GUIDE	used	616563784	8.84	4967	-0.131	-0.270	0.087	0.139	38.079280	-7.169362	-702.70	2321.02
5	GUIDE	used	692339576	8.49	4967	0.023	0.173	0.108	0.167	37.731204	-7.997834	-1927.64	-668.28
6	GUIDE	used	692716584	9.47	4949	0.063	0.128	0.097	0.157	38.493247	-7.961276	789.05	-522.76
7	GUIDE	used	692716704	8.81	4965	-0.046	-0.190	0.063	0.105	38.765396	-7.719156	1755.55	352.52

2.4 Star Slots

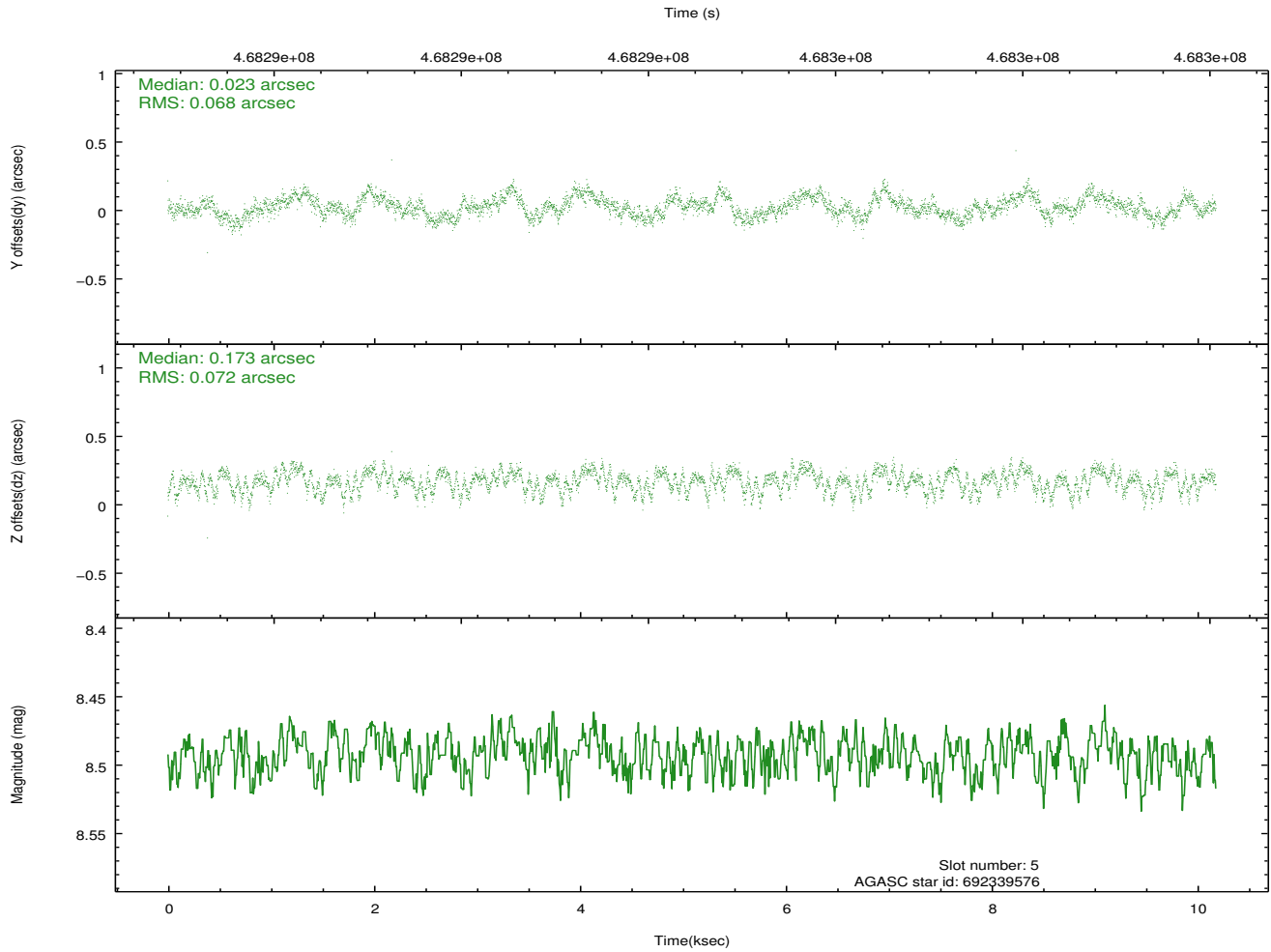
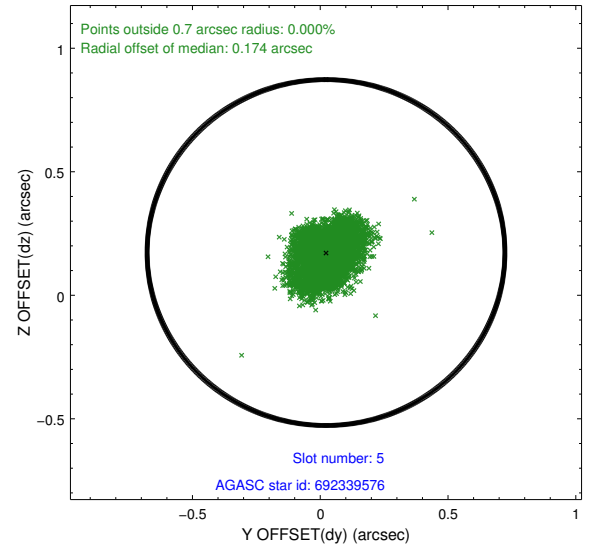
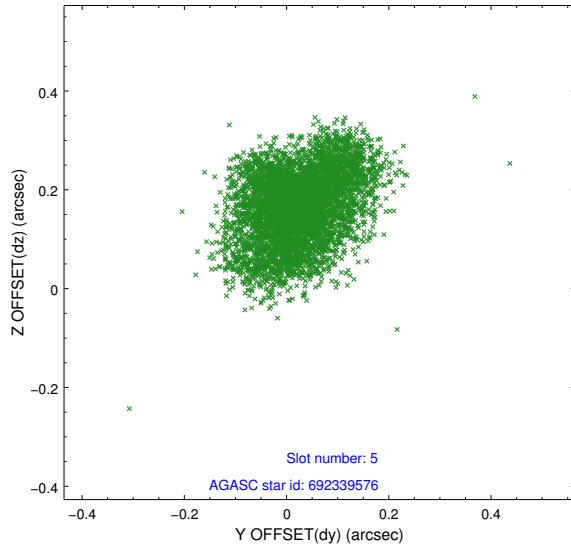
2.4.1 Slot 3



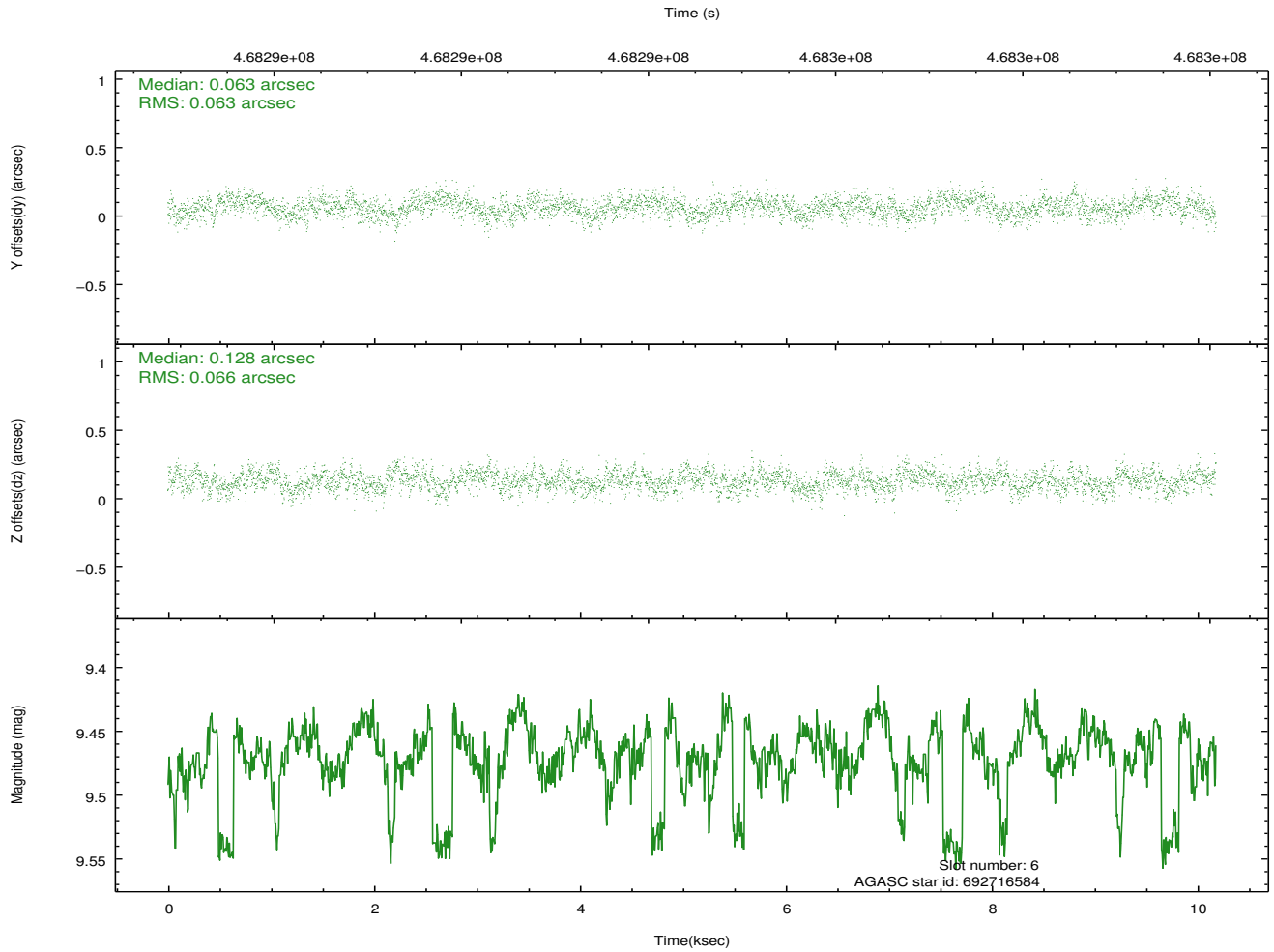
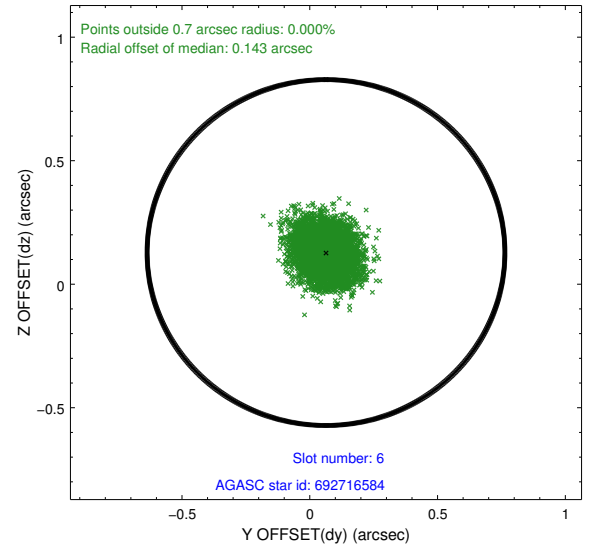
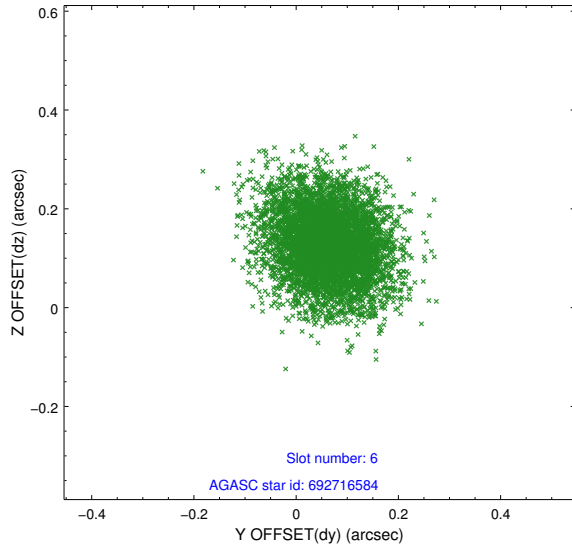
2.4.2 Slot 4



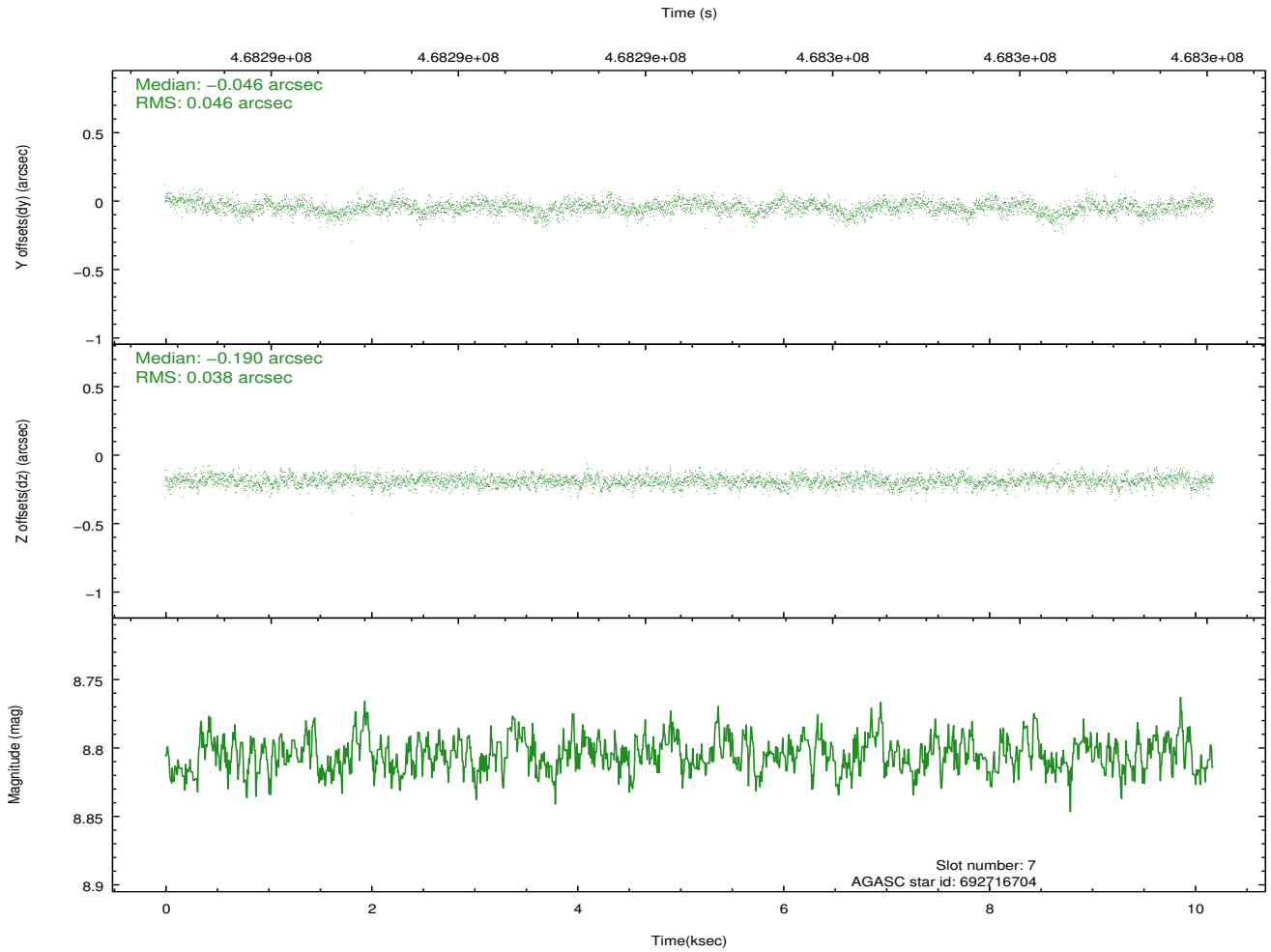
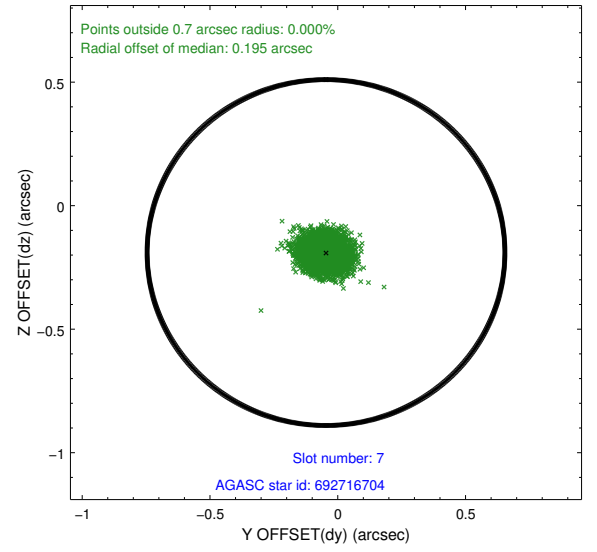
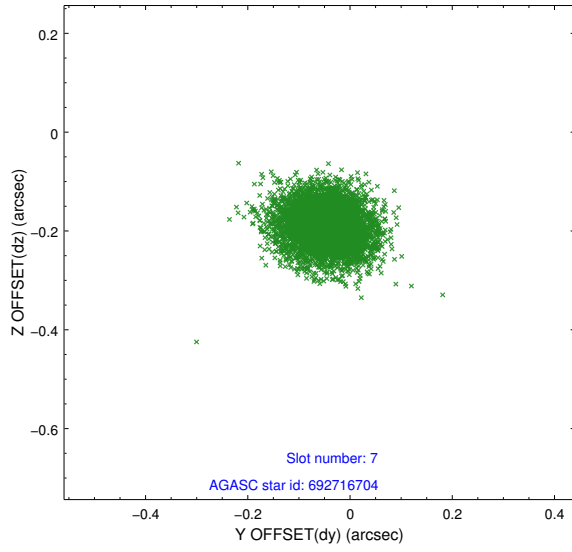
2.4.3 Slot 5



2.4.4 Slot 6

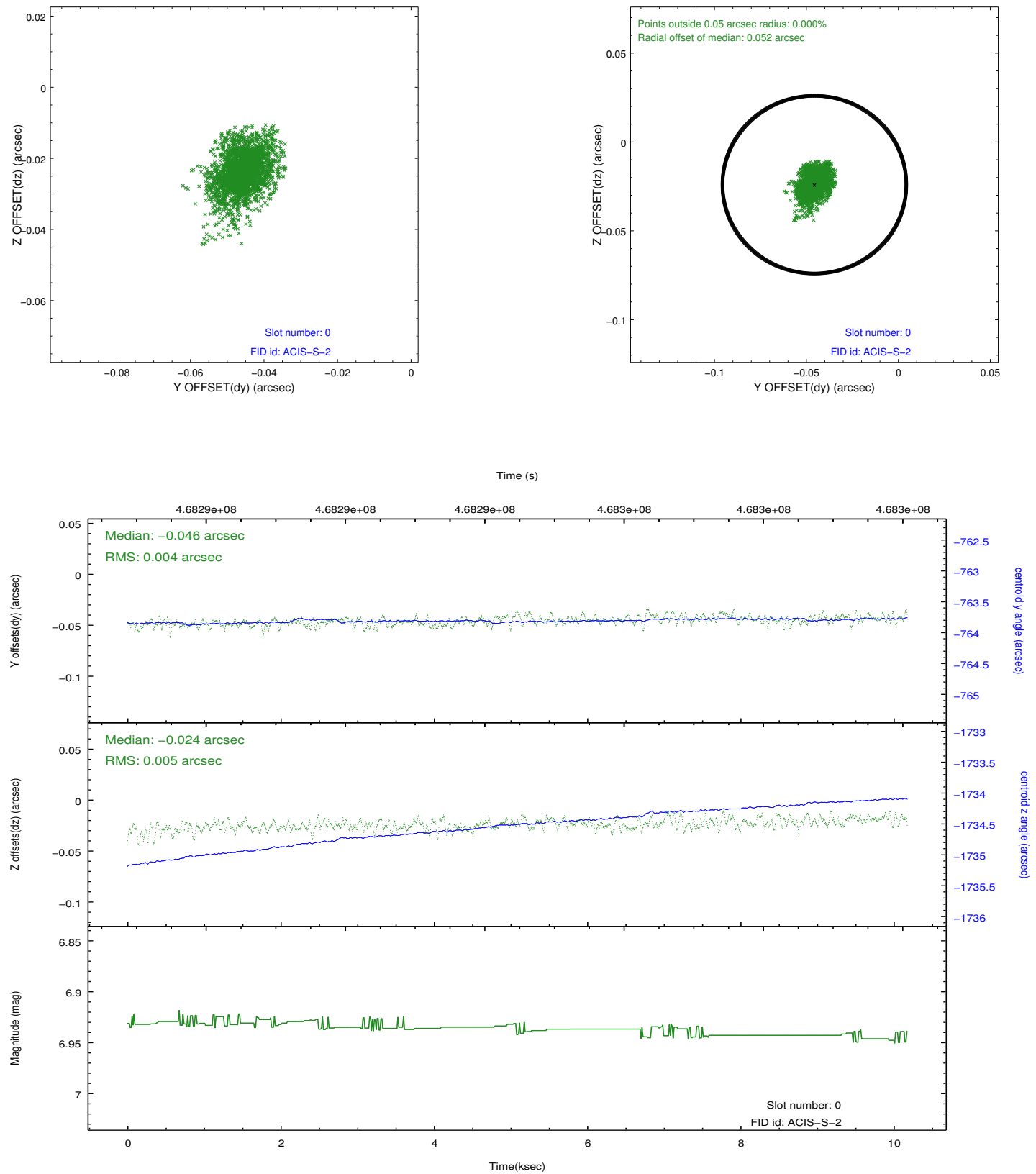


2.4.5 Slot 7

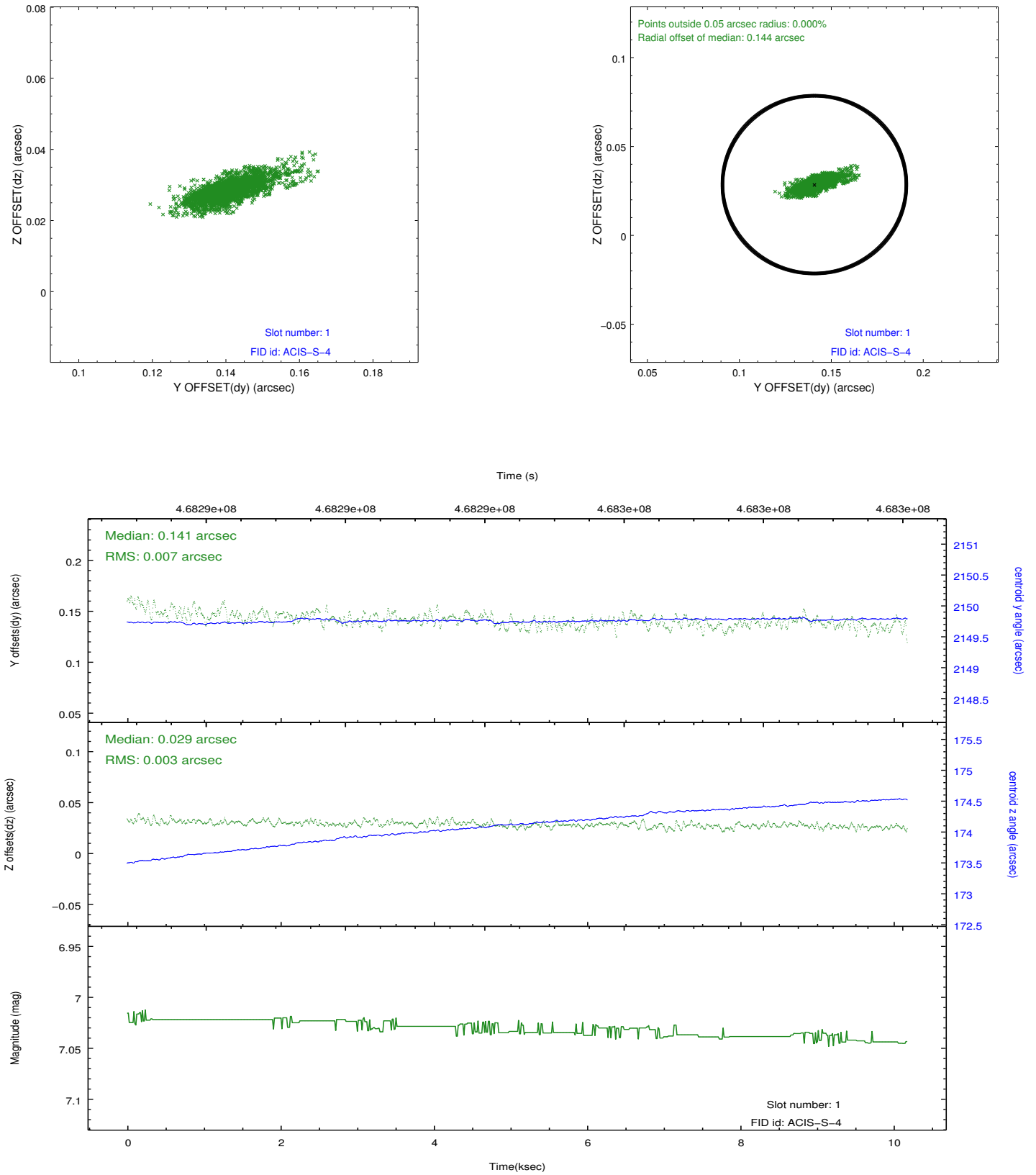


2.5 FID Slots

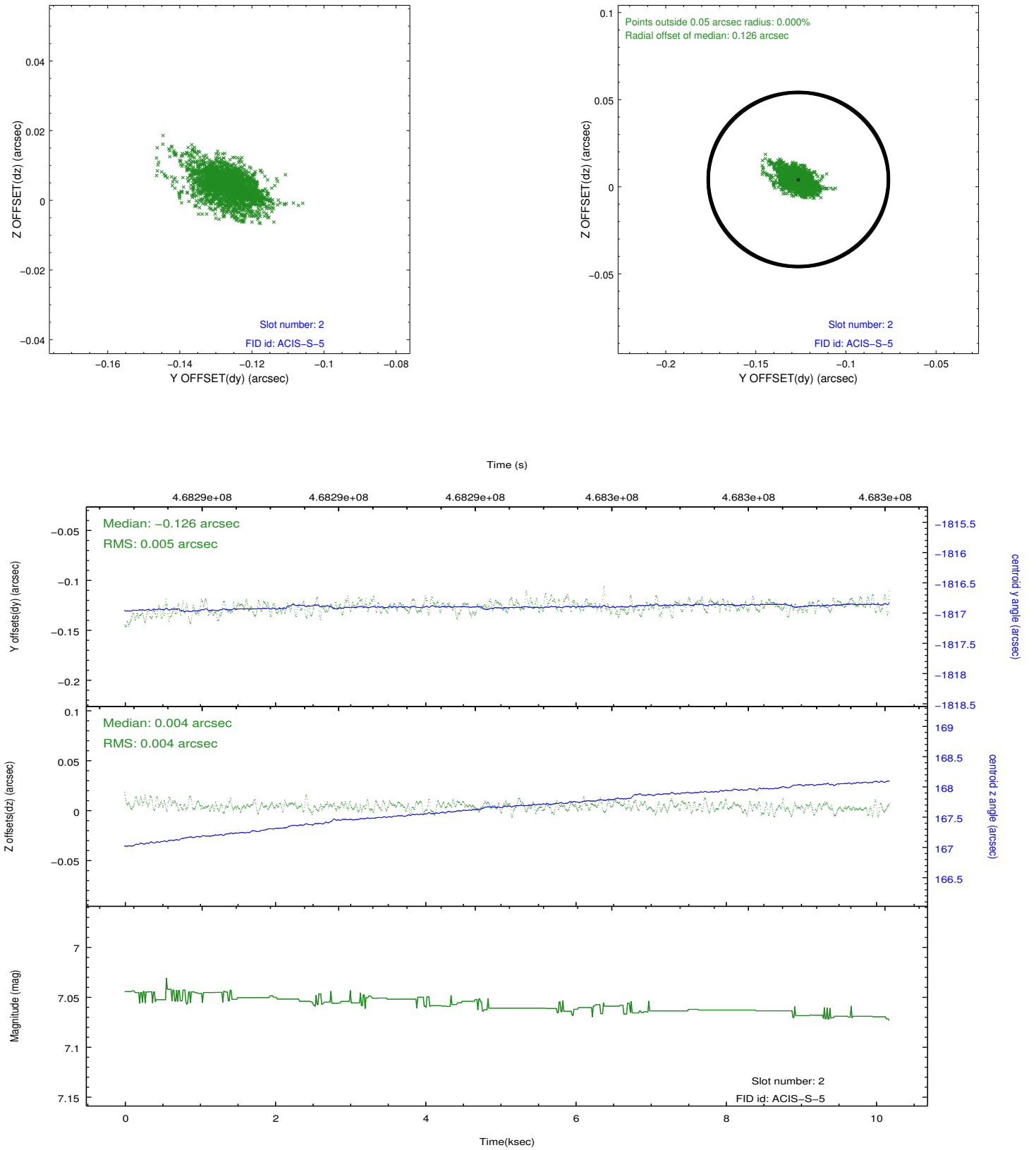
2.5.1 Slot 0



2.5.2 Slot 1



2.5.3 Slot 2



A Summary

A.1 Status

V&V Scientist	Jen Lauer
V&V Date (YYYY-MM-DD)	2014.12.03
V&V Edition	1
V&V Disposition and Status	OK
V&V Charge Time	10.079807788551

A.2 Comments

These data have been reprocessed with new aspect alignment calibration files that correct small mean offsets (up to 0.4 arcsecs) and improve overall astrometric accuracy. The new calibration was determined using data from the time period being reprocessed and was performed using cross-correlation of X-ray sources with radio and optical counterparts.