

V&V Reference Report

L2 ASCDS Version : 10

Observation 15015 - L2 Version 2
Chandra X-Ray Center

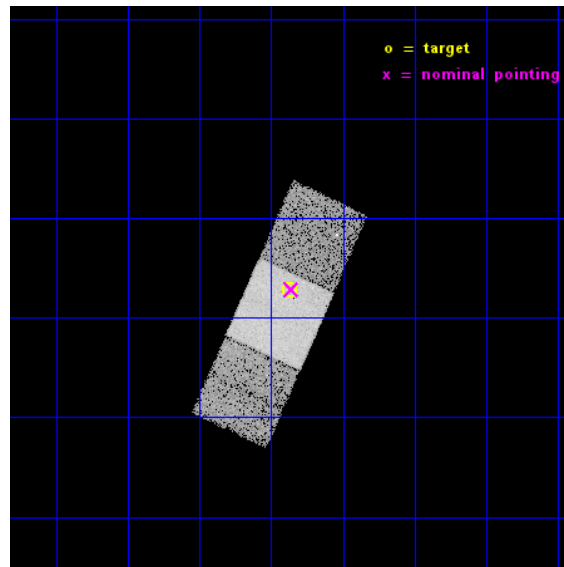
L2 Processing Date : Dec 3 2014

Contents

1	Front	2
2	OBI	3
2.1	OBI	3
2.1.1	Images	3
2.1.2	Bias	3
2.1.3	Parameters	4
2.1.4	Events	4
2.2	Compared Parameters	5
2.3	Aspect	6
2.4	Star Slots	9
2.4.1	Slot 3	9
2.4.2	Slot 4	10
2.4.3	Slot 5	11
2.4.4	Slot 6	12
2.4.5	Slot 7	13
2.5	FID Slots	14
2.5.1	Slot 0	14
2.5.2	Slot 1	15
2.5.3	Slot 2	16
A	Summary	17
A.1	Status	17
A.2	Comments	17

1 Front

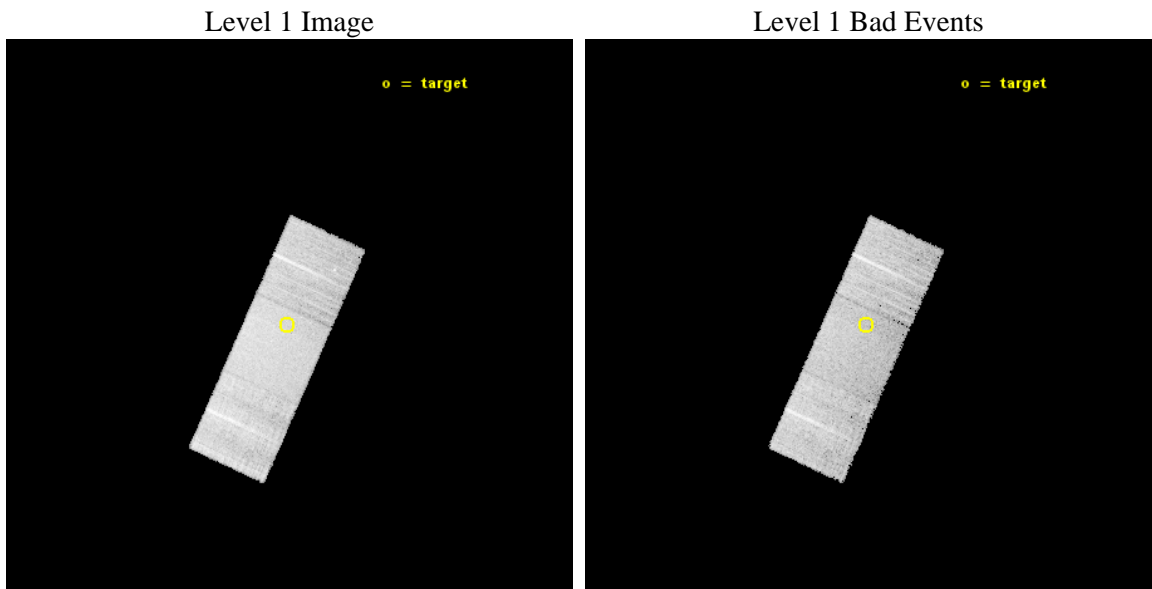
seq_num	702823	Sequence number
obs_id	15015	Observation id
title	Testing the slim disk scenario for active intermediate mass black holes	Proposal title
observer	Elena Gallo	Principal investigator
object	SDSS J003552.26+011249.4	Source name
dtcycle	0	
cycle	P	events from which exps? Prim/Second/Both
ra_targ	8.967917	Observer's specified target RA [deg]
dec_targ	1.213694	Observer's specified target Dec [deg]
ra_nom	8.9649171205631	Nominal RA [deg]
dec_nom	1.2141224954359	Nominal Dec [deg]
roll_nom	114.40299418611	Nominal Roll [deg]
revision	2	Processing version of data
ontime	16079.350611448	Sum of GTIs [s]
livetime	15869.262058264	Livetime [s]
ontime6	16079.309571445	Sum of GTIs [s]
ontime7	16079.350611448	Sum of GTIs [s]
ontime8	16079.268531442	Sum of GTIs [s]
l2events	61979	Number of level 2 events



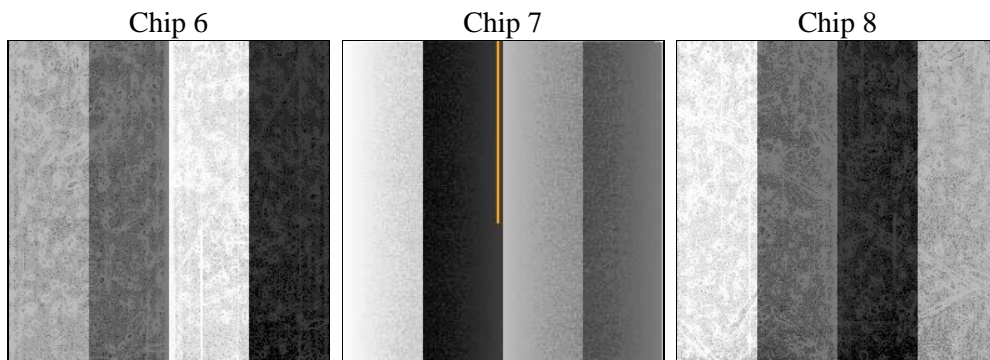
2 OBI

2.1 OBI

2.1.1 Images



2.1.2 Bias



2.1.3 Parameters

obi_num	0	Obi number	sched_exp_time	16000.000000	[s] Scheduled observation exposure time
ascdsver	10.3	Processing system revision	ontime	16079.350611448	Sum of GTIs [s]
caldsver	4.6.4	 	ontime6	16079.309571445	Sum of GTIs [s]
date	2014-12-03T11:39:46	Date and time of file creation	ontime7	16079.350611448	Sum of GTIs [s]
revision	2	Processing version of data	ontime8	16079.268531442	Sum of GTIs [s]
			l1events	280949	Number of level 1 events

2.1.4 Events

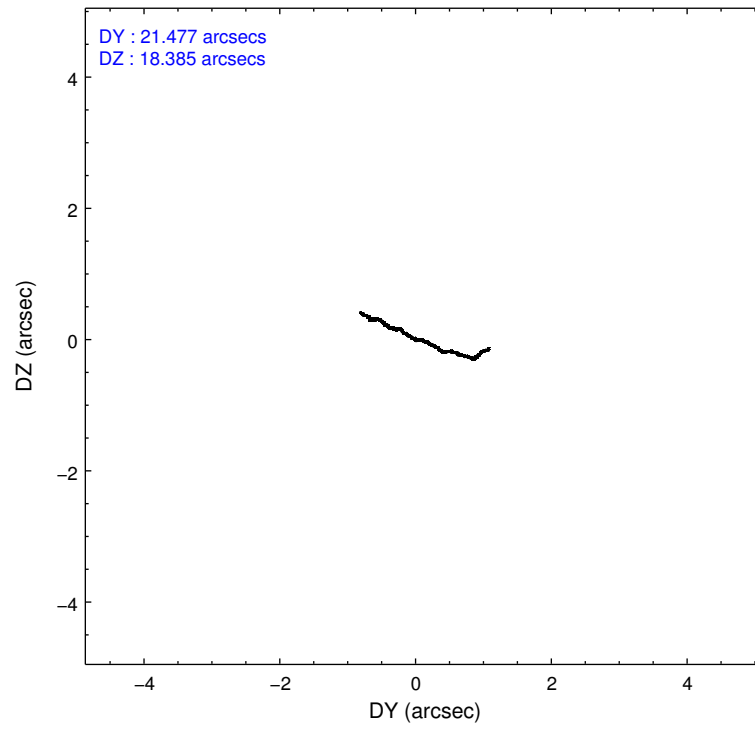
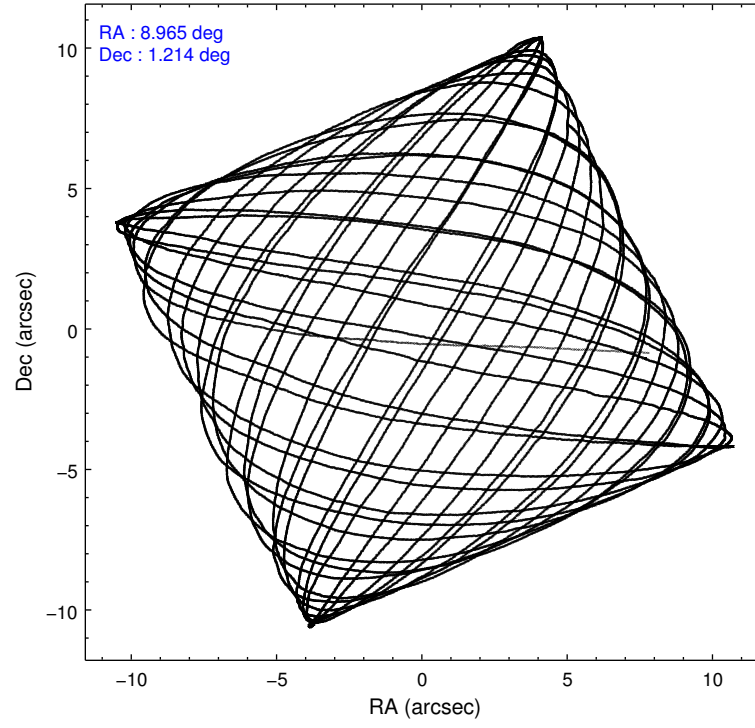
	ccd 6	ccd 7	ccd 8
level 1 events	76662	102667	101620
rejected events	67104	57506	73900
rejected %	87%	56%	72%

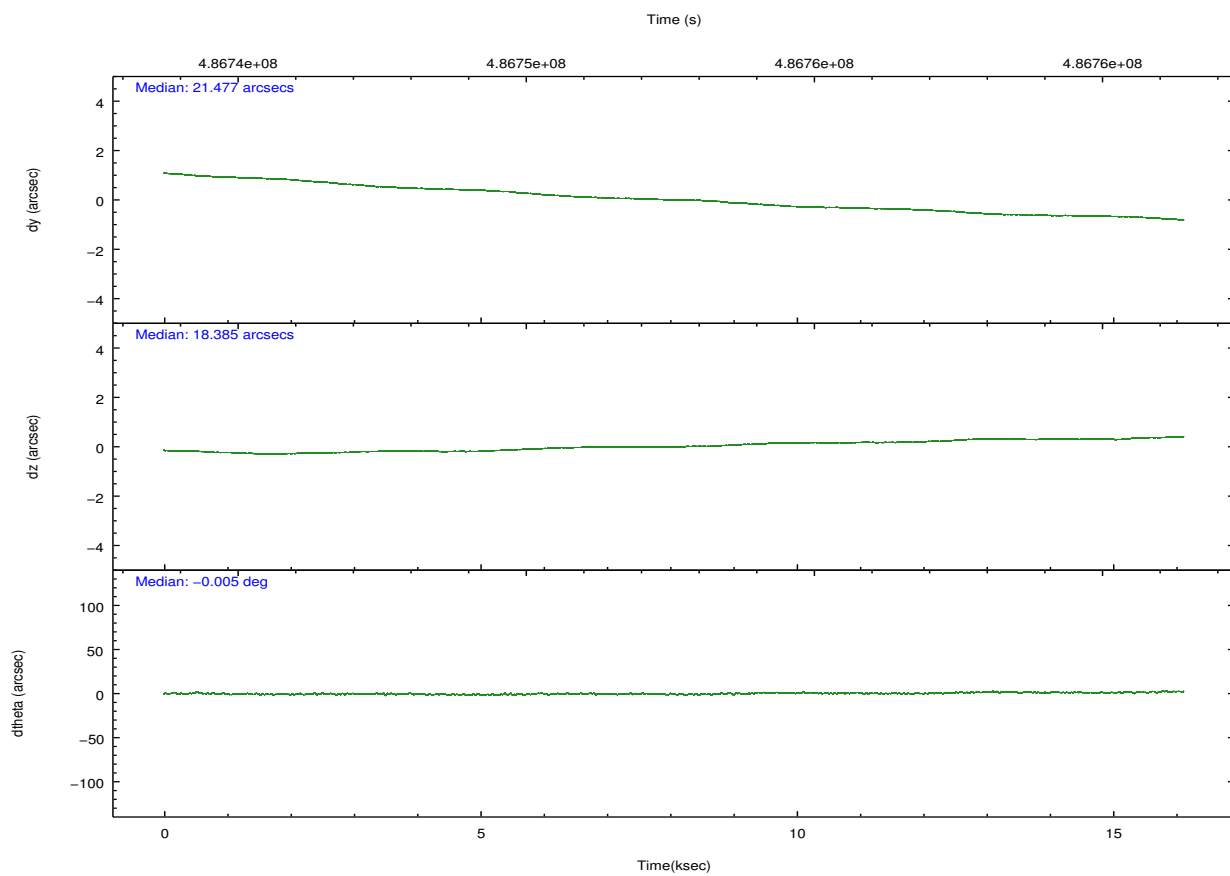
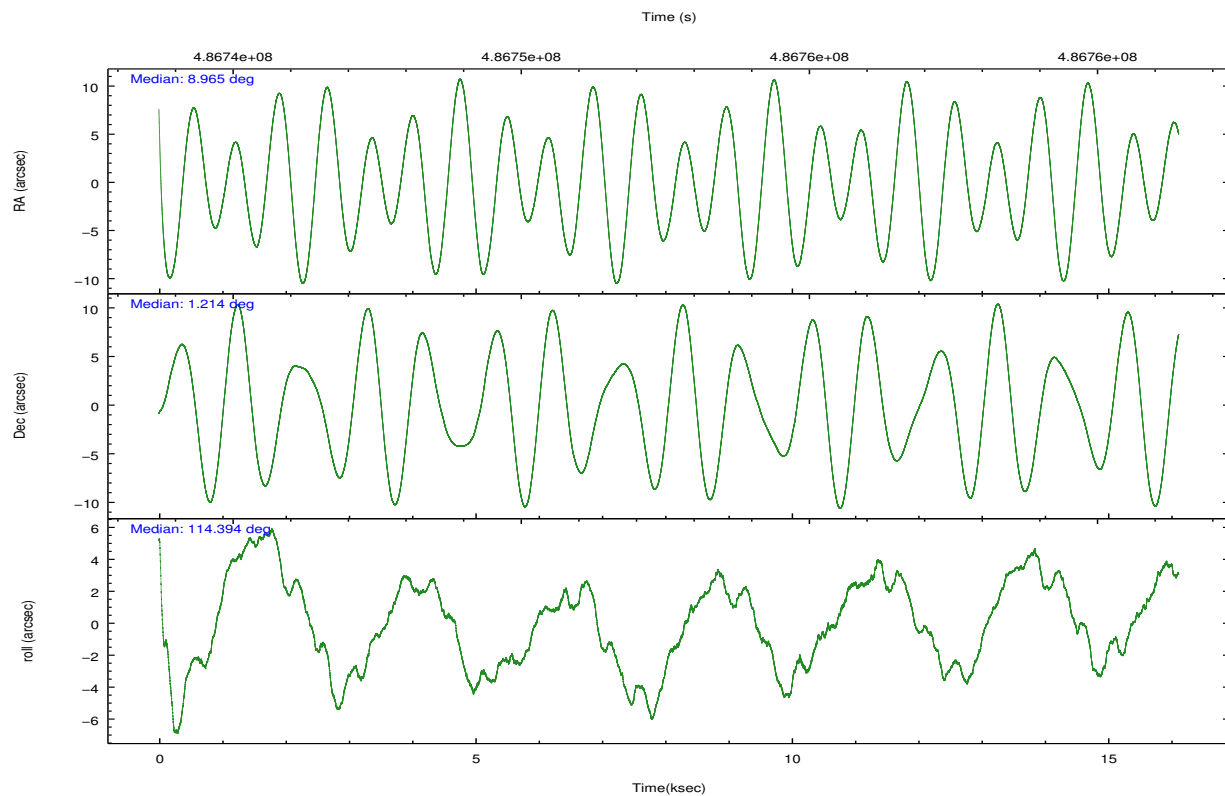
	ccd 6	ccd 7	ccd 8
grade 0 events	3293	4160	8254
	4%	4%	8%
grade 1 events	37	125	68
	0%	0%	0%
grade 2 events	2150	9355	6181
	2%	9%	6%
grade 3 events	952	3940	2974
	1%	3%	2%
grade 4 events	932	3914	2828
	1%	3%	2%
grade 5 events	4037	10700	5699
	5%	10%	5%
grade 6 events	2235	23810	7510
	2%	23%	7%
grade 7 events	63026	46663	68106
	82%	45%	67%

2.2 Compared Parameters

Parameter	Planned	Actual	Parameter	Planned	Actual
Instrument	ACIS	ACIS	Obspar format version number	7	7
Detector	ACIS-678	ACIS-678	Obspar file type	PREDICTED	ACTUAL
Grating	NONE	NONE	Obspar update status	NONE	UPDATED
Data mode	FAINT	FAINT	CCD I0 on	N	N
Observation mode	POINTING	POINTING	CCD I1 on	N	N
[deg] Pointing RA	8.987368	8.964917120563143	CCD I2 on	N	N
[deg] Pointing Dec	1.198512	1.214122495435868	CCD I3 on	N	N
[deg] Pointing Roll	114.245890	114.4029941861088	CCD S0 on	N	N
[mm] SIM focus pos	-0.684267	-0.6828225247311905	CCD S1 on	N	N
[mm] SIM defocus	0	0.001444936568705701	CCD S2 on	O1	Y
[mm] SIM translation stage pos	-190.132523	-190.1425803651734	CCD S3 on	Y	Y
[mm] SIM translation stage offset	0	0.01005778216563158	CCD S4 on	O2	Y
[s] Observation start time (MET)	486744618.184000	486743355.08876	CCD S5 on	N	N
Observation start date	2013-06-04T14:49:11	2013-06-04T14:29:15	Number of optional ACIS chips dropped	0	0
[s] Observation end time (MET)	486760618.184000	486761563.70225	On-chip summing requested	N	N
Observation end date	2013-06-04T19:15:51	2013-06-04T19:32:43	Subarray requested	NONE	NONE
Read mode	TIMED	TIMED	Alternating exposures requested	N	N
			[s] Primary exposure time	0.000000	3.1

2.3 Aspect



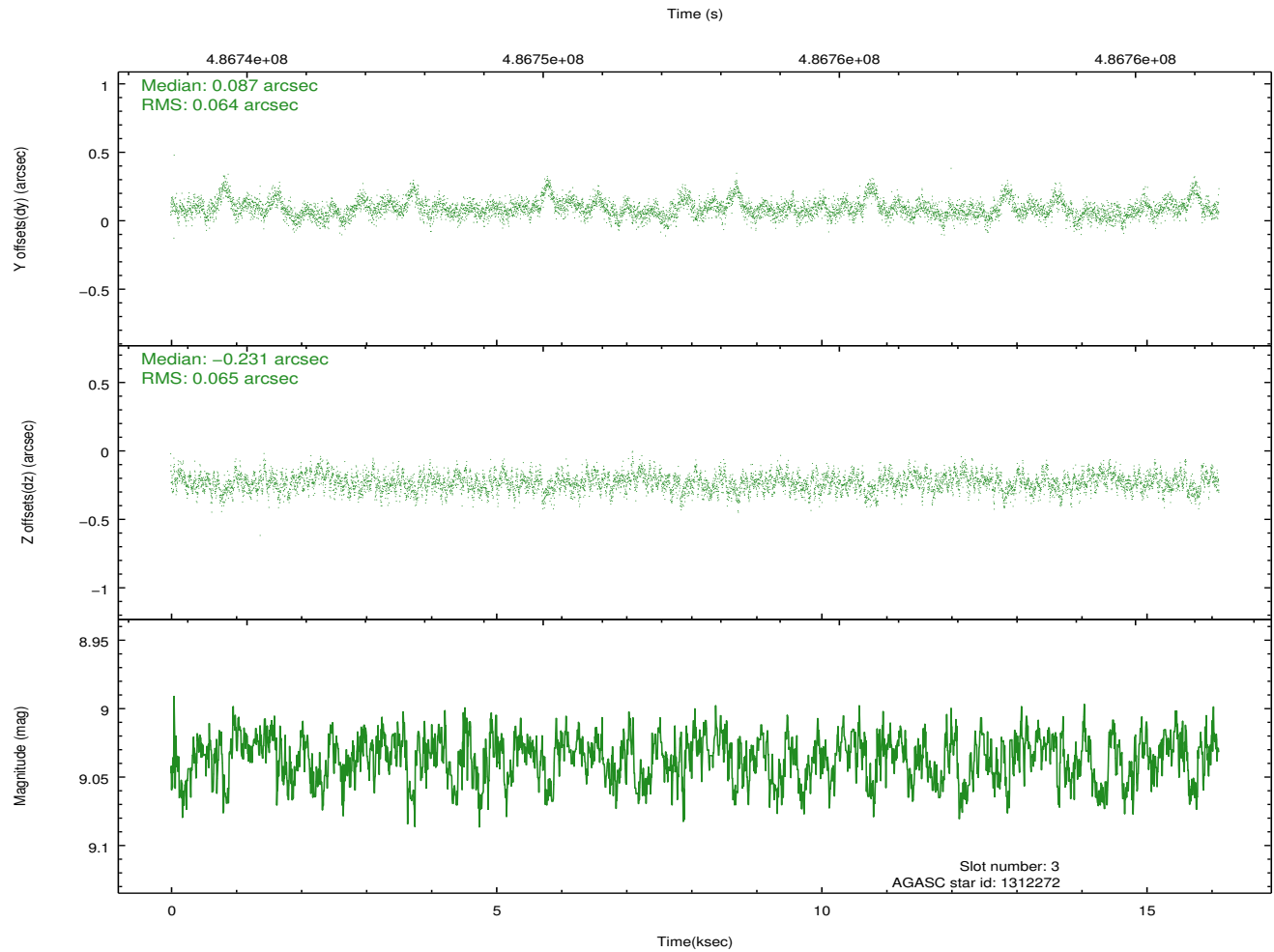
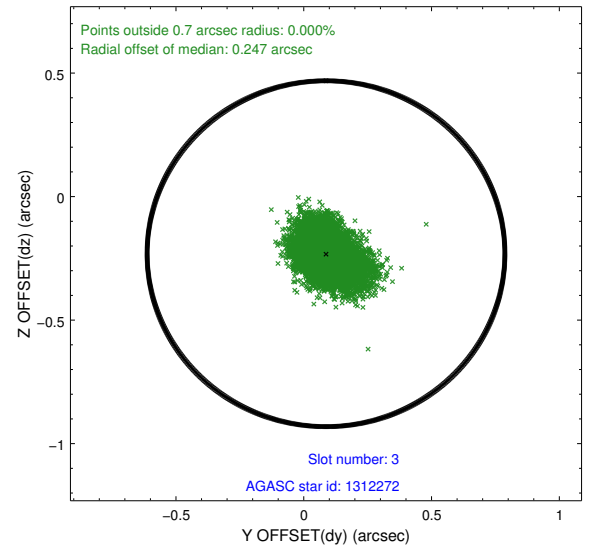
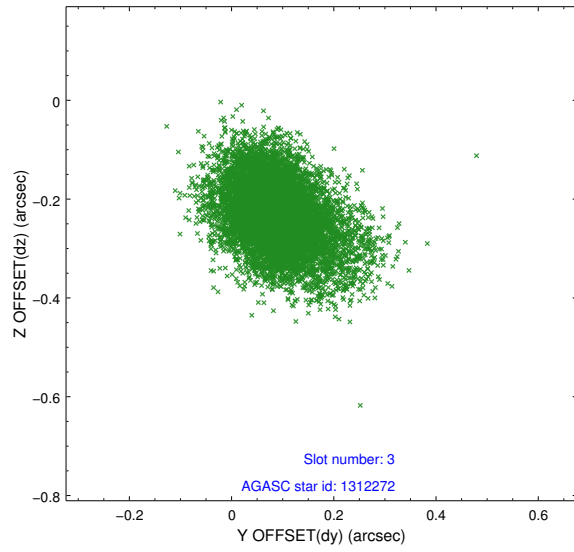


Slot Statistics

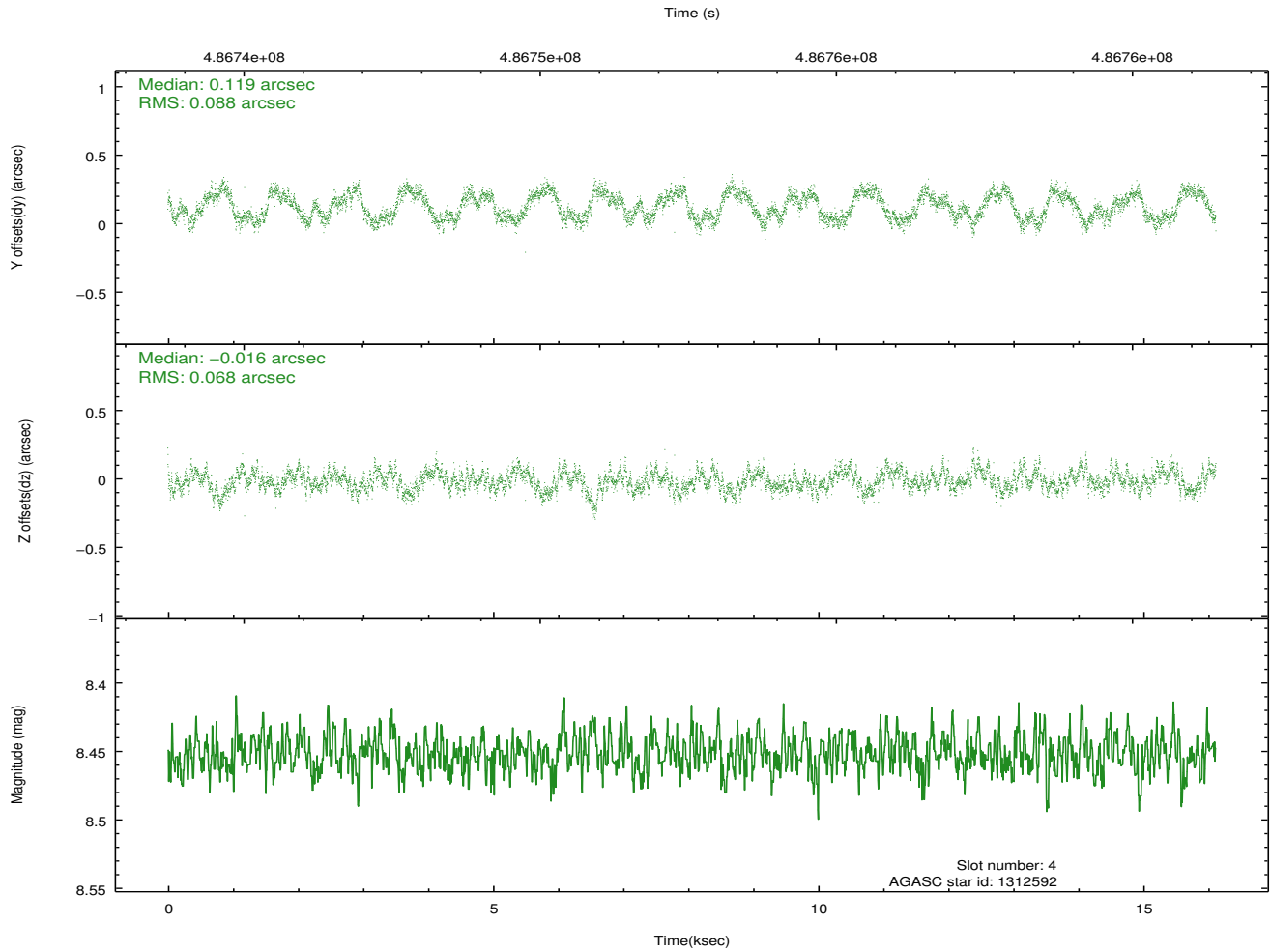
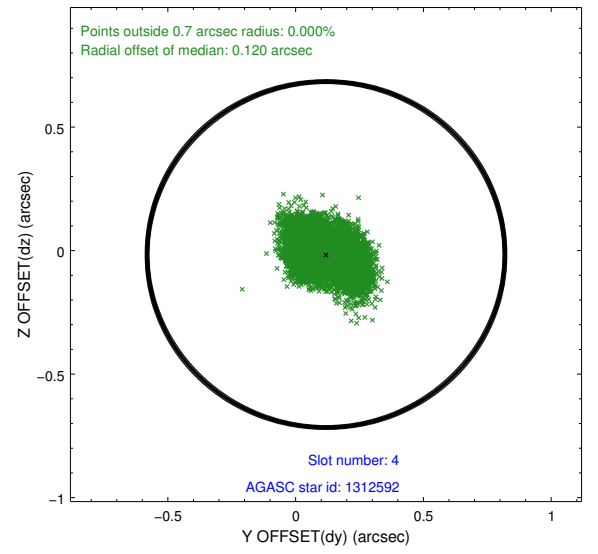
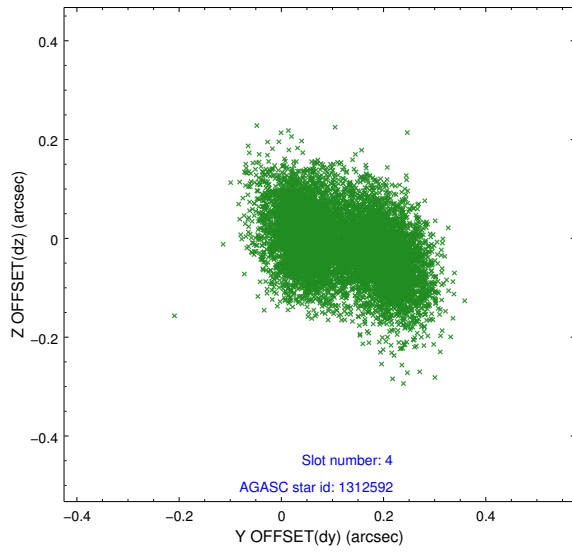
slot	status	used	id	mag	n_pts	med_dy	med_dz	dr1	dr2	ra	dec	mean_y	mean_z
0	FID		ACIS-S-1	7.02	3932	0.115	0.034	0.013	0.021	0.000000	0.000000	921.47	-1735.44
1	FID		ACIS-S-2	6.94	3931	-0.149	-0.029	0.009	0.015	0.000000	0.000000	-774.55	-1740.31
2	FID		ACIS-S-6	7.15	3932	0.012	0.002	0.010	0.017	0.000000	0.000000	386.93	805.59
3	GUIDE	used	1312272	9.03	7858	0.087	-0.231	0.094	0.165	8.723223	0.830777	-816.60	1410.64
4	GUIDE	used	1312592	8.45	7839	0.119	-0.016	0.121	0.180	8.599138	1.002695	-68.69	1564.00
5	GUIDE	used	1315040	10.18	7774	0.076	0.255	0.192	0.311	9.394385	1.727055	1134.59	-2116.69
6	GUIDE	used	1315400	9.03	7859	-0.101	-0.047	0.145	0.229	9.064885	1.389358	512.37	-536.51
7	GUIDE	used	1316576	9.07	7857	-0.171	0.055	0.191	0.341	9.201161	1.855588	1841.21	-1672.64

2.4 Star Slots

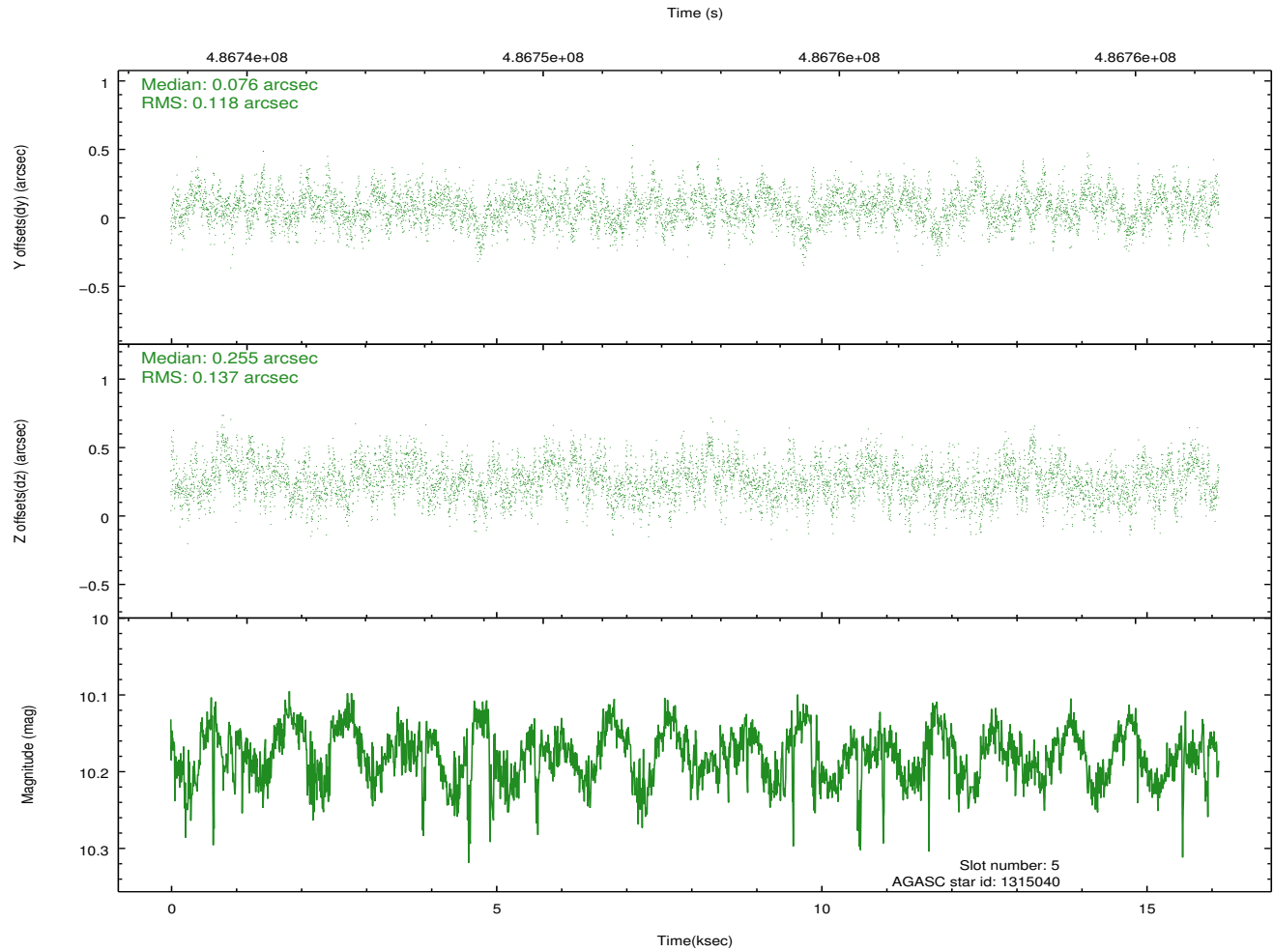
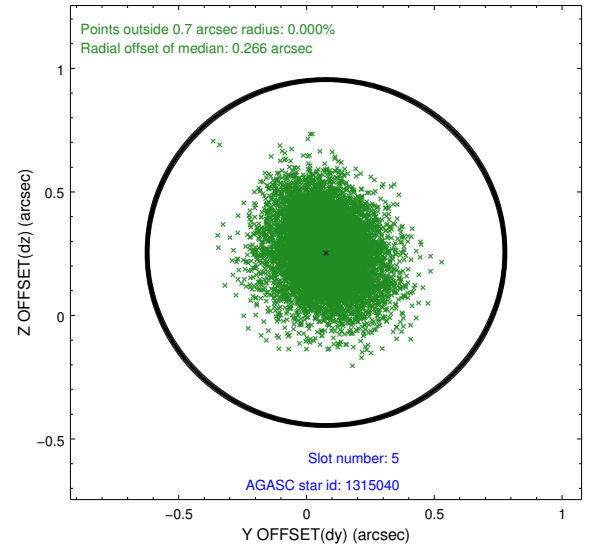
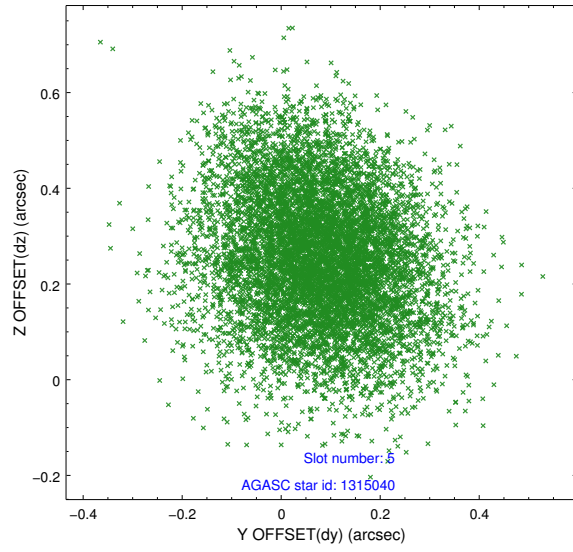
2.4.1 Slot 3



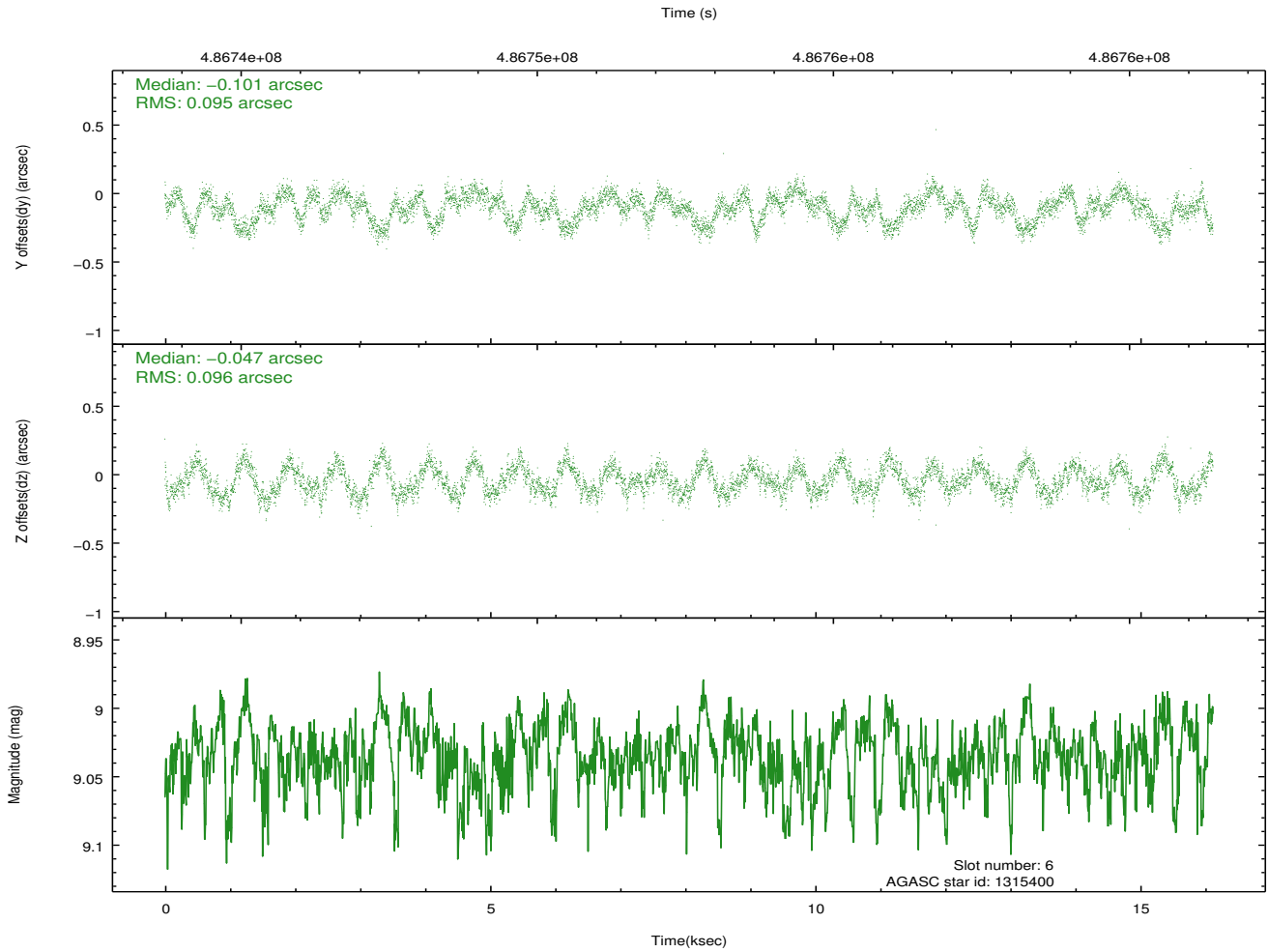
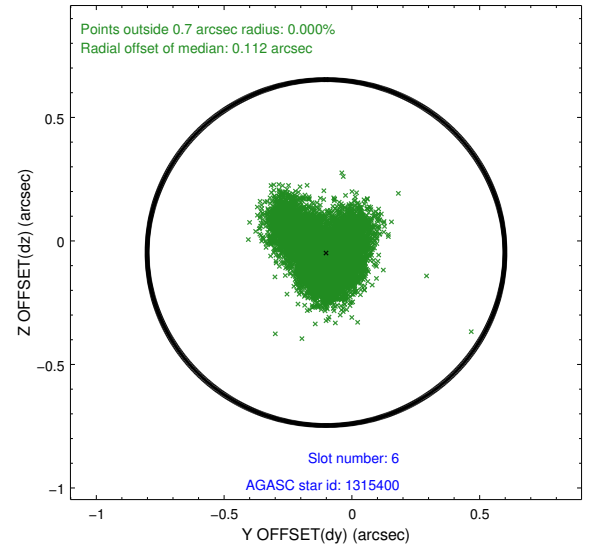
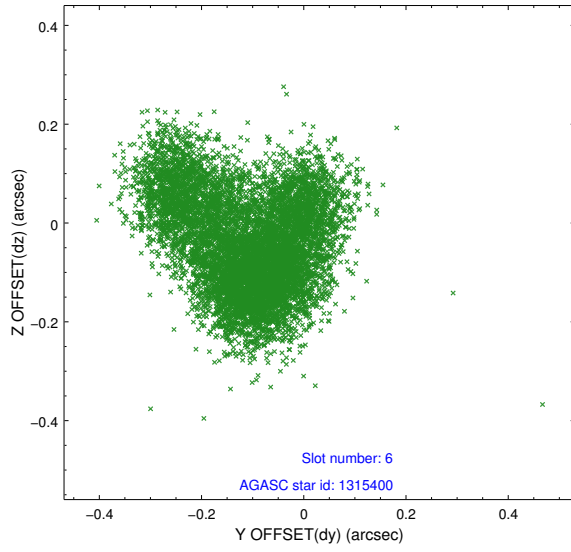
2.4.2 Slot 4



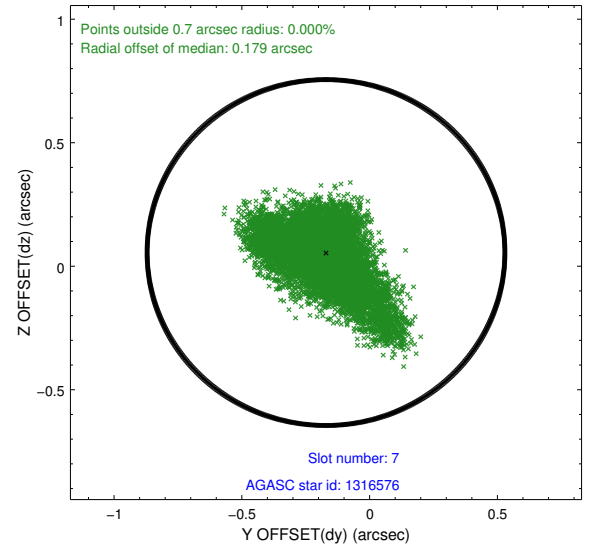
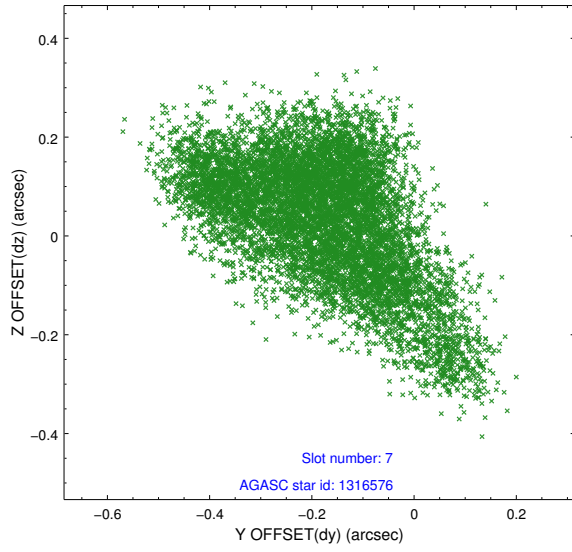
2.4.3 Slot 5



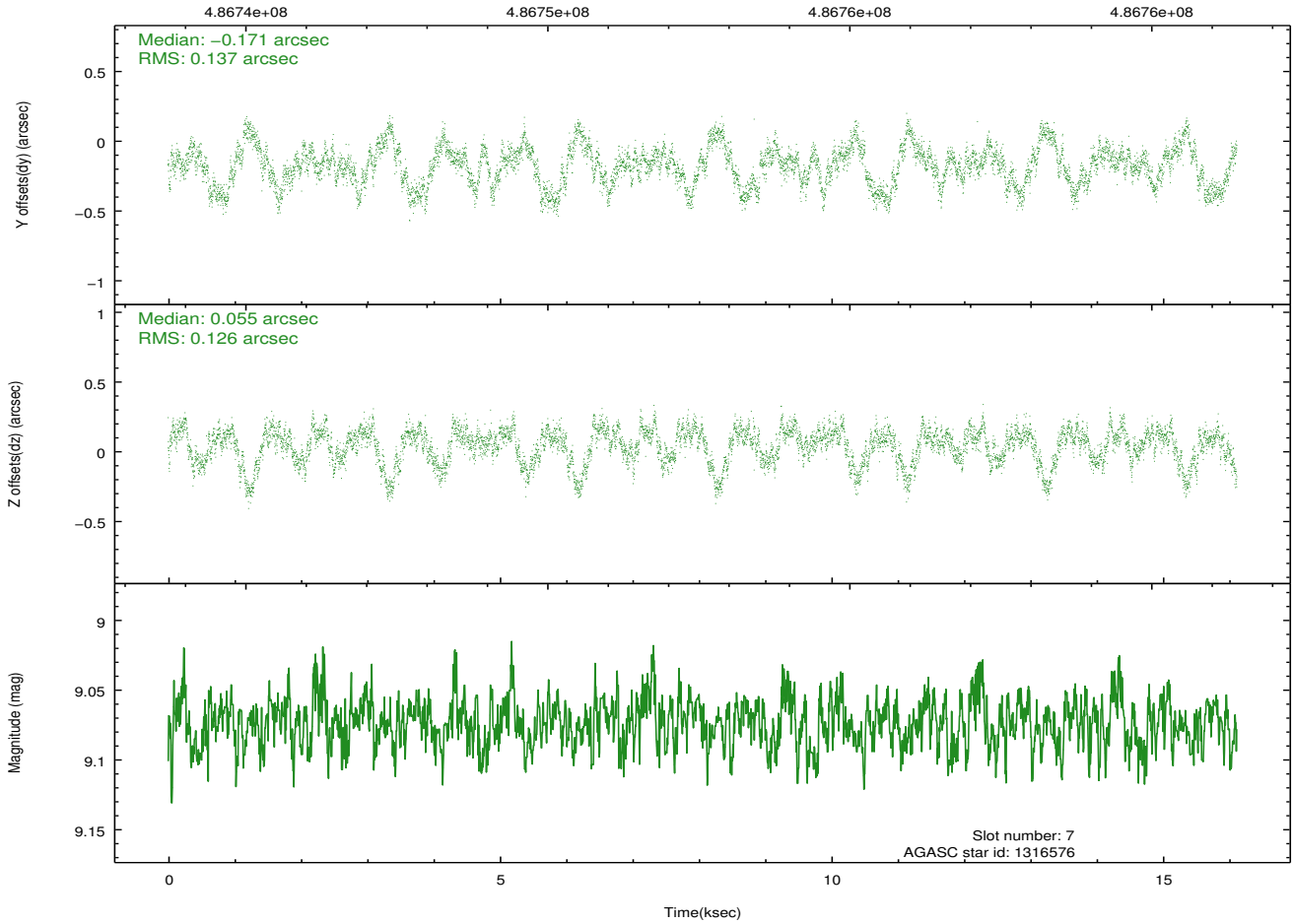
2.4.4 Slot 6



2.4.5 Slot 7

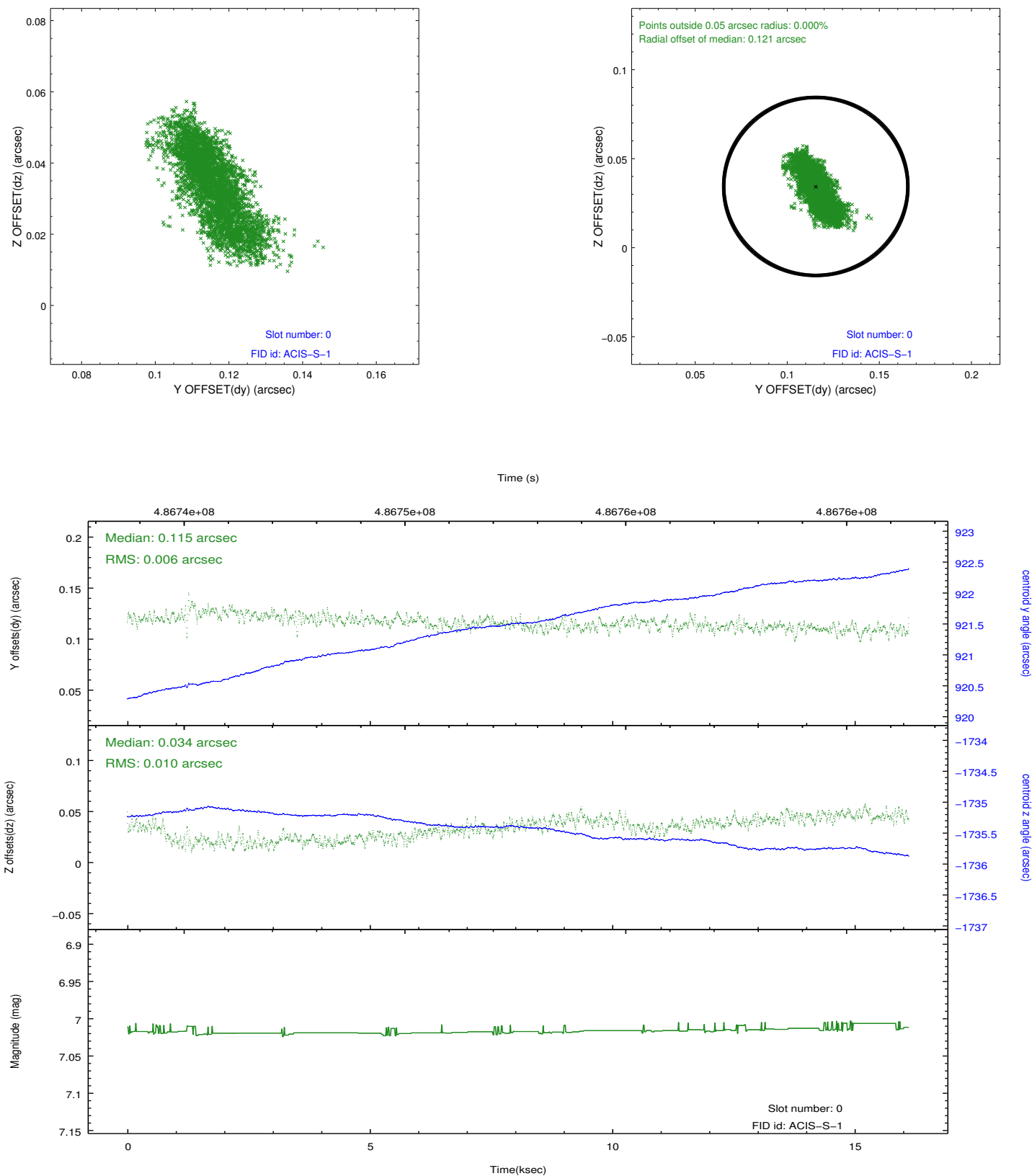


Time (s)

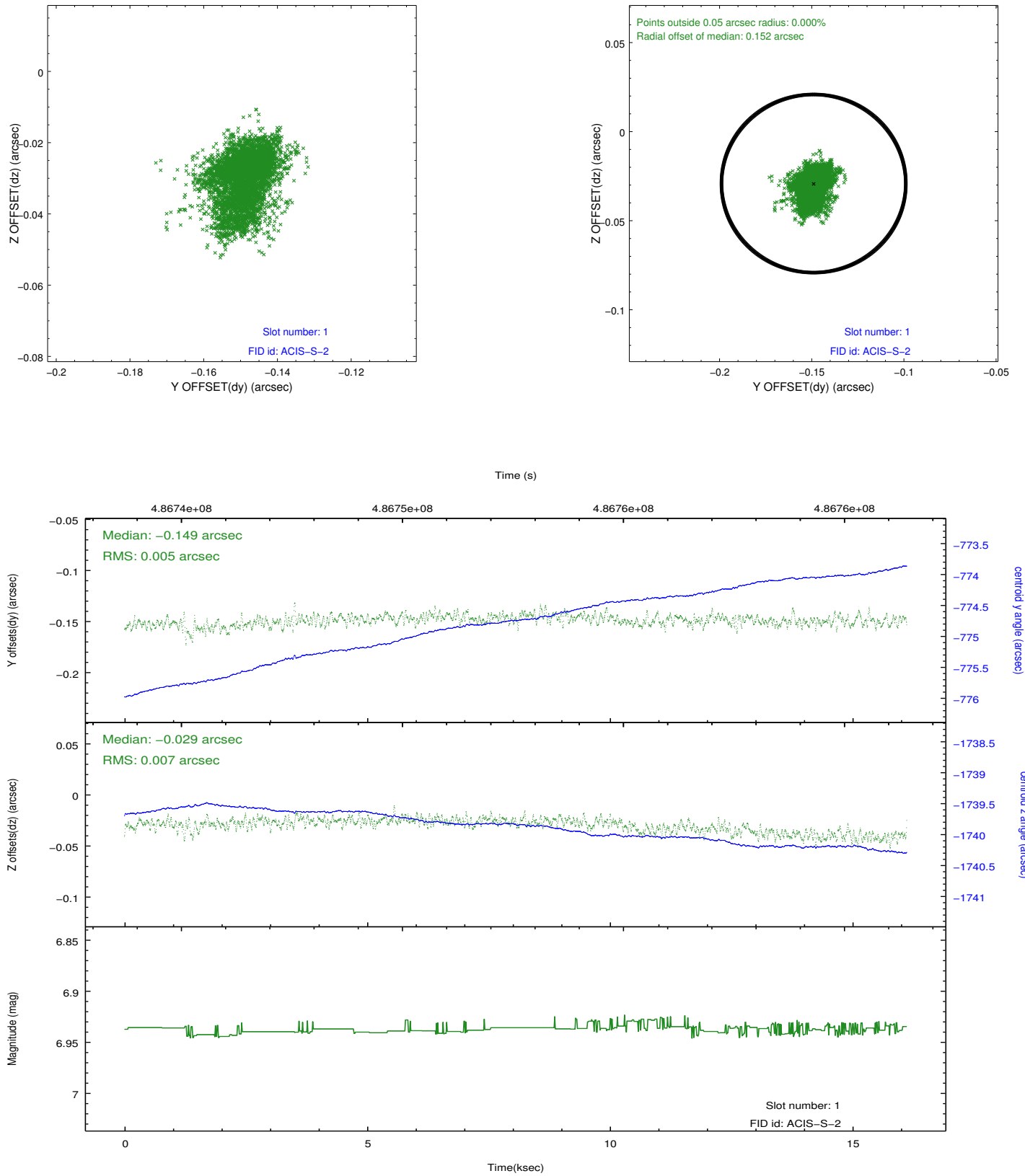


2.5 FID Slots

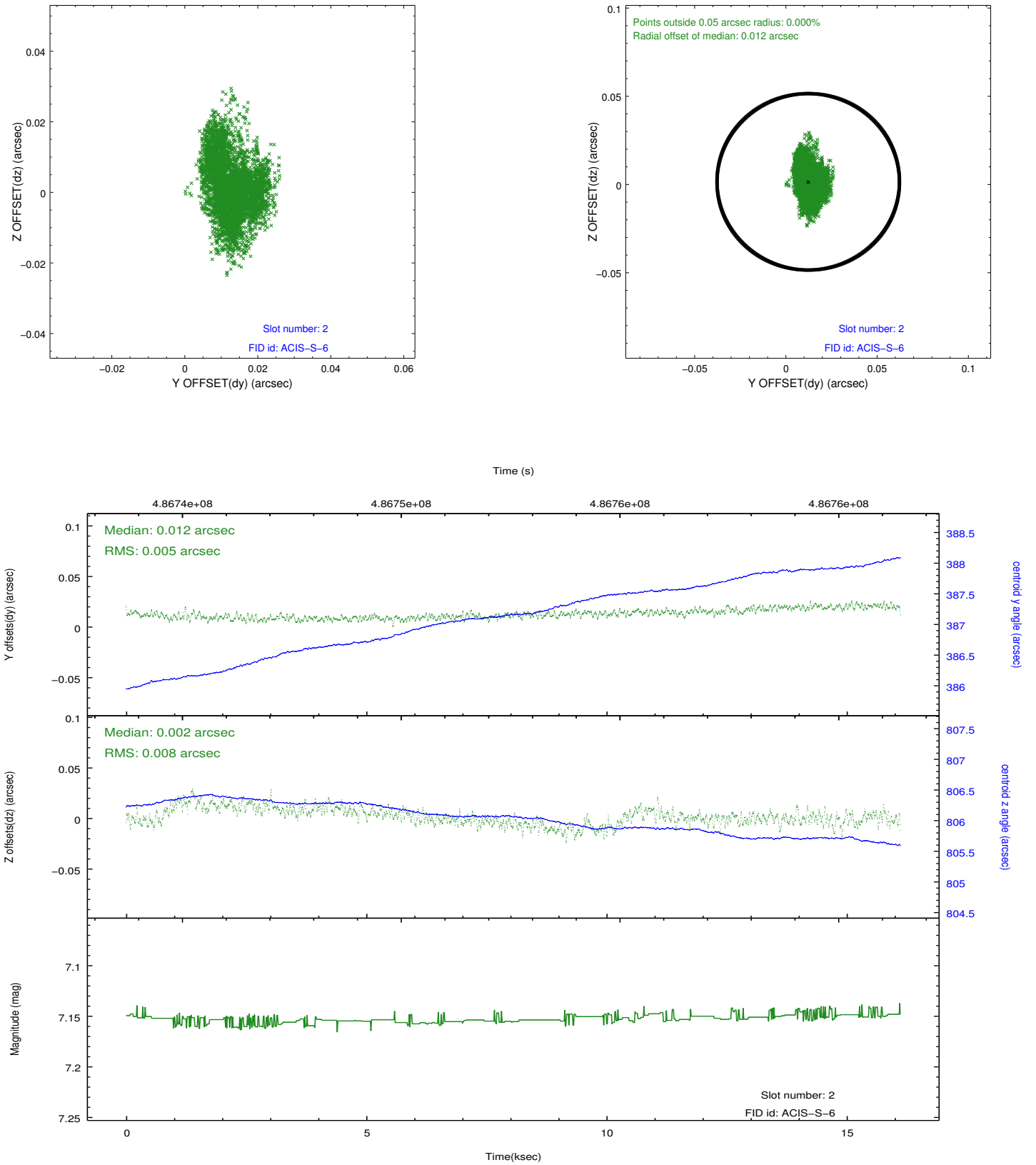
2.5.1 Slot 0



2.5.2 Slot 1



2.5.3 Slot 2



A Summary

A.1 Status

V&V Scientist	Beth Sundheim
V&V Date (YYYY-MM-DD)	2014.12.10
V&V Edition	1
V&V Disposition and Status	OK
V&V Charge Time	16.079350611448

A.2 Comments

These data have been reprocessed with new aspect alignment calibration files that correct small mean offsets (up to 0.4 arcsecs) and improve overall astrometric accuracy. The new calibration was determined using data from the time period being reprocessed and was performed using cross-correlation of X-ray sources with radio and optical counterparts.