

V&V Reference Report

L2 ASCDS Version : 10

Observation 14998 - L2 Version 2
Chandra X-Ray Center

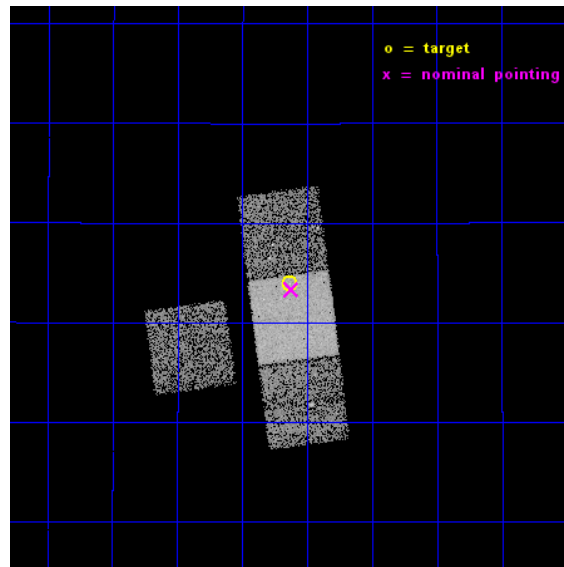
L2 Processing Date : Dec 6 2014

Contents

1	Front	2
2	OBI	3
2.1	OBI	3
2.1.1	Images	3
2.1.2	Bias	3
2.1.3	Parameters	4
2.1.4	Events	4
2.2	Compared Parameters	5
2.3	Aspect	6
2.4	Star Slots	9
2.4.1	Slot 3	9
2.4.2	Slot 4	10
2.4.3	Slot 5	11
2.4.4	Slot 6	12
2.4.5	Slot 7	13
2.5	FID Slots	14
2.5.1	Slot 0	14
2.5.2	Slot 1	15
2.5.3	Slot 2	16
A	Summary	17
A.1	Status	17
A.2	Comments	17

1 Front

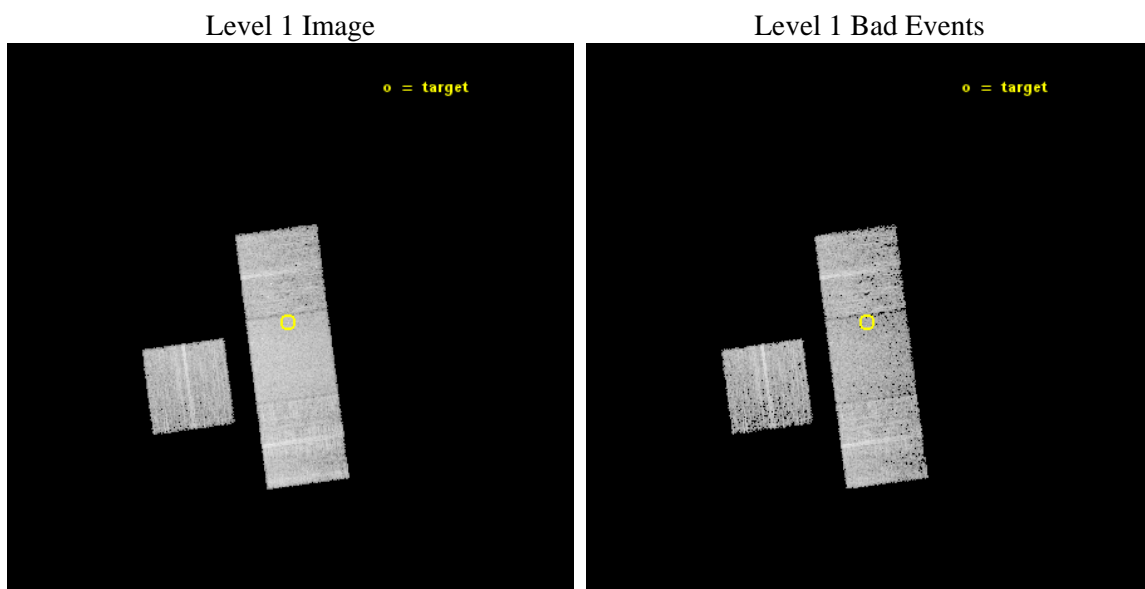
seq_num	702806	Sequence number
obs_id	14998	Observation id
title	The Herschel Legacy of powerful 3C radio galaxies and quasars II: observing Proposal.	Proposal title
observer	Dr Joanna Kuraszkiewicz	Principal investigator
object	3C172	Source name
dtcycle	0	
cycle	P	events from which exps? Prim/Second/Both
ra_targ	105.534583	Observer's specified target RA [deg]
dec_targ	25.231517	Observer's specified target Dec [deg]
ra_nom	105.53040854926	Nominal RA [deg]
dec_nom	25.222363583578	Nominal Dec [deg]
roll_nom	82.447563354519	Nominal Roll [deg]
revision	2	Processing version of data
ontime	10078.10007751	Sum of GTIs [s]
livetime	9946.4222806079	Livetime [s]
ontime3	10078.10007751	Sum of GTIs [s]
ontime6	10078.10007751	Sum of GTIs [s]
ontime7	10078.10007751	Sum of GTIs [s]
ontime8	10078.07698524	Sum of GTIs [s]
l2events	42511	Number of level 2 events



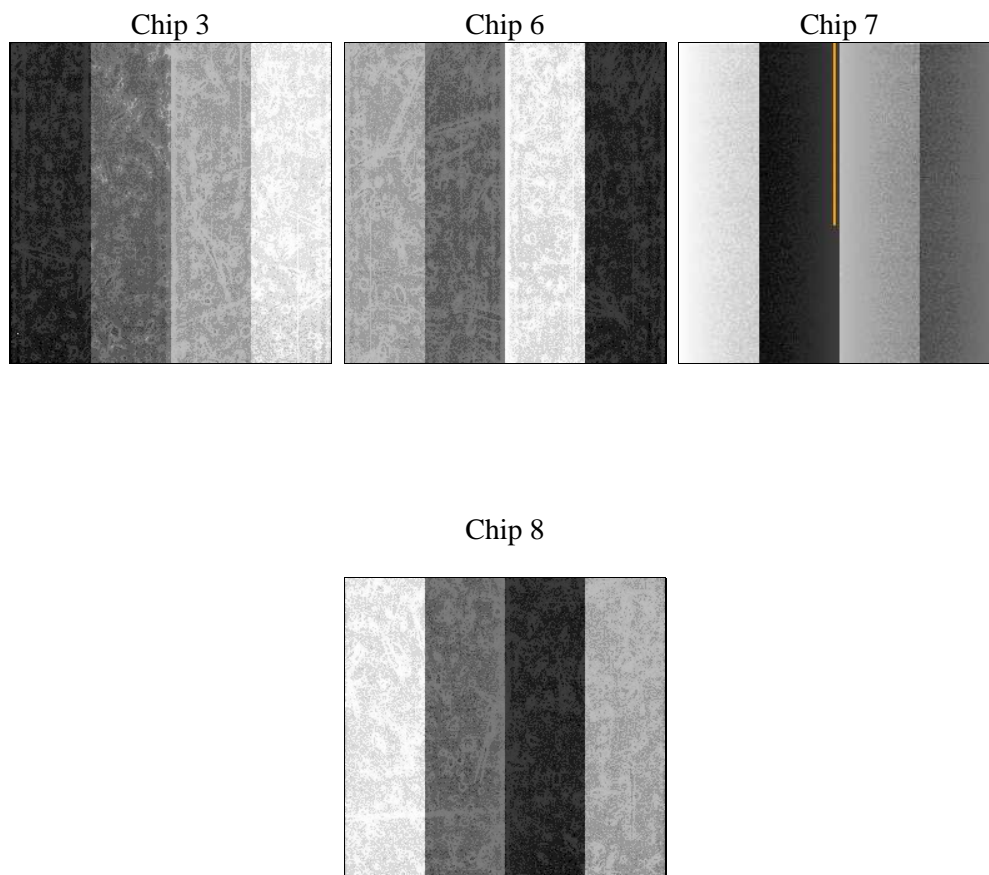
2 OBI

2.1 OBI

2.1.1 Images



2.1.2 Bias



2.1.3 Parameters

obi_num	1	Obi number	sched_exp_time	10000.000000	[s] Scheduled observation exposure time
ascdsver	10.3.1	Processing system revision	ontime	10078.10007751	Sum of GTIs [s]
caldsver	4.6.4	 	ontime3	10078.10007751	Sum of GTIs [s]
date	2014-12-06T10:09:04	Date and time of file creation	ontime6	10078.10007751	Sum of GTIs [s]
revision	2	Processing version of data	ontime7	10078.10007751	Sum of GTIs [s]
			ontime8	10078.07698524	Sum of GTIs [s]
			l1events	214620	Number of level 1 events

2.1.4 Events

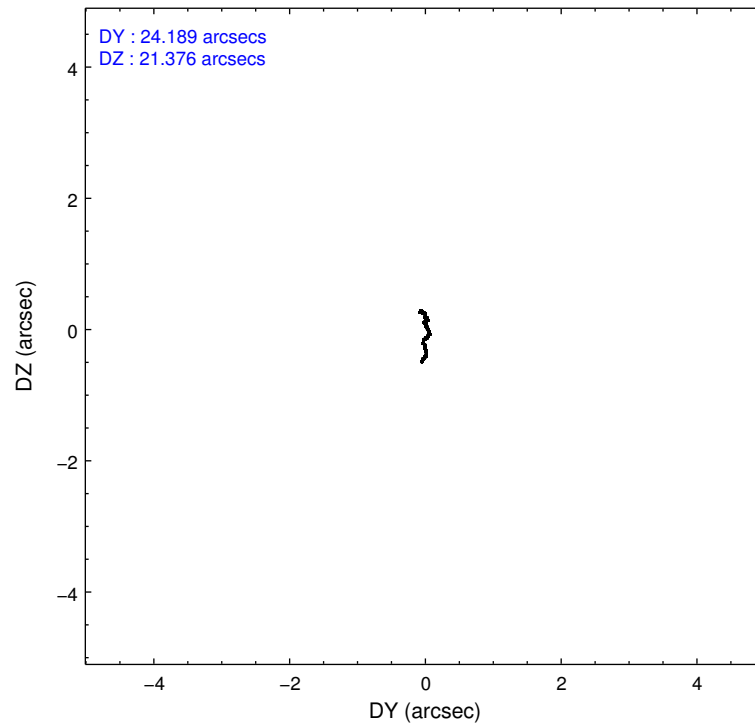
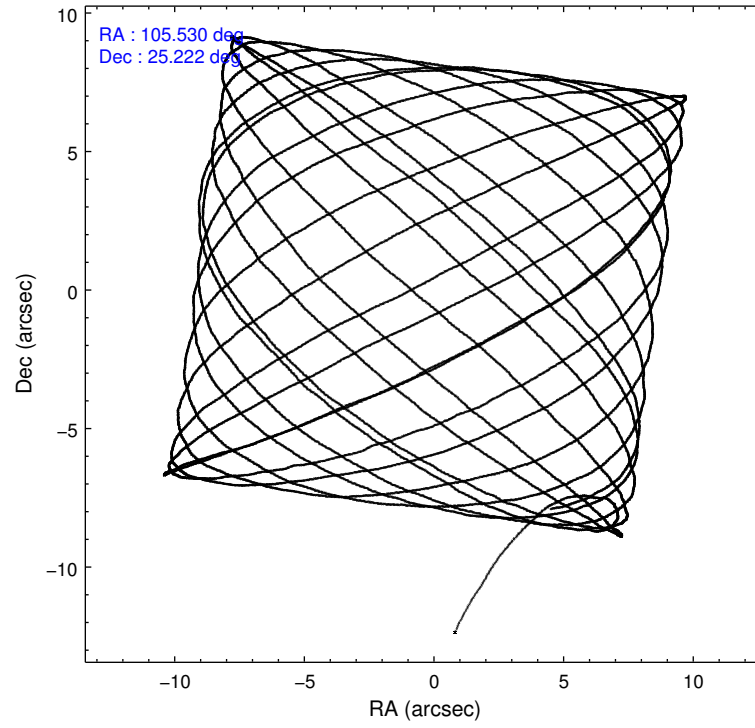
	ccd 3	ccd 6	ccd 7	ccd 8
level 1 events	43501	46353	62353	62413
rejected events	38362	40400	35027	45677
rejected %	88%	87%	56%	73%

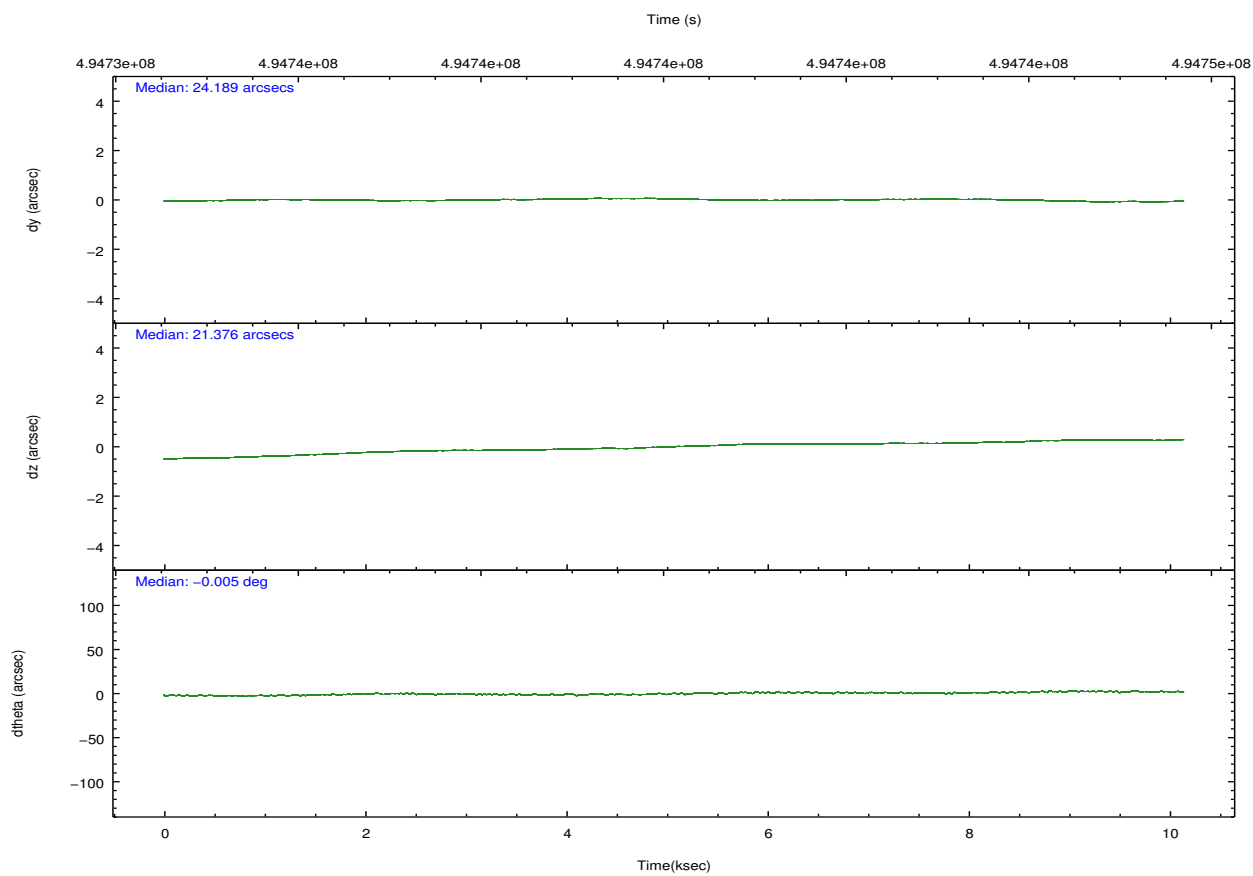
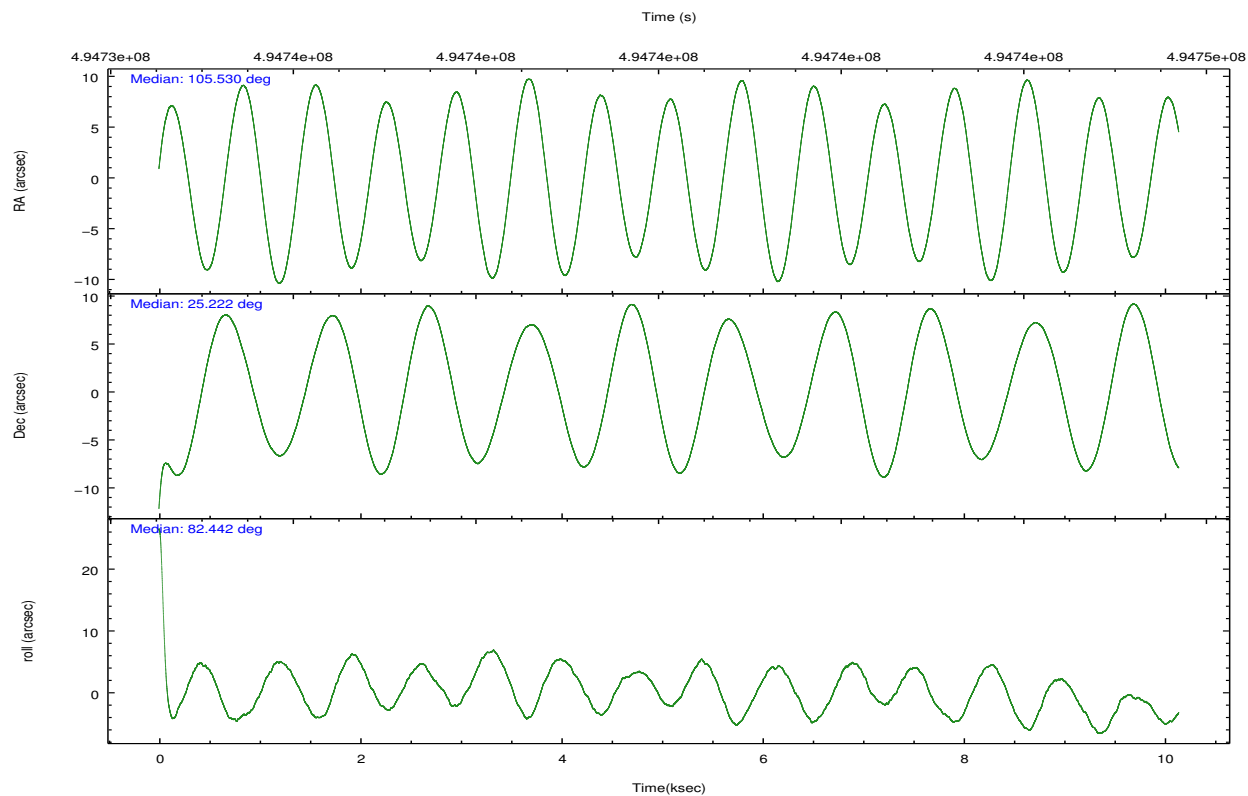
	ccd 3	ccd 6	ccd 7	ccd 8
grade 0 events	1795	2181	2463	5181
	4%	4%	3%	8%
grade 1 events	23	27	59	45
	0%	0%	0%	0%
grade 2 events	1173	1291	5551	3946
	2%	2%	8%	6%
grade 3 events	524	599	2461	1683
	1%	1%	3%	2%
grade 4 events	538	581	2303	1512
	1%	1%	3%	2%
grade 5 events	2439	2501	6472	3542
	5%	5%	10%	5%
grade 6 events	1111	1304	14552	4427
	2%	2%	23%	7%
grade 7 events	35898	37869	28492	42077
	82%	81%	45%	67%

2.2 Compared Parameters

Parameter	Planned	Actual	Parameter	Planned	Actual
Instrument	ACIS	ACIS	Obspar format version number	7	7
Detector	ACIS-3678	ACIS-3678	Obspar file type	PREDICTED	ACTUAL
Grating	NONE	NONE	Obspar update status	NONE	UPDATED
Data mode	FAINT	FAINT	CCD I0 on	N	N
Observation mode	POINTING	POINTING	CCD I1 on	N	N
[deg] Pointing RA	105.542280	105.5304085492619	CCD I2 on	N	N
[deg] Pointing Dec	25.197278	25.22236358357808	CCD I3 on	O1	Y
[deg] Pointing Roll	82.285846	82.44756335451871	CCD S0 on	N	N
[mm] SIM focus pos	-0.684267	-0.6828225247311905	CCD S1 on	N	N
[mm] SIM defocus	0	0.001444936568705701	CCD S2 on	O3	Y
[mm] SIM translation stage pos	-190.132523	-190.1400660498719	CCD S3 on	Y	Y
[mm] SIM translation stage offset	0	0.00754346686406393	CCD S4 on	O2	Y
[s] Observation start time (MET)	494735172.184000	494733842.96115	CCD S5 on	N	N
Observation start date	2013-09-05T02:25:05	2013-09-05T02:04:02	Number of optional ACIS chips dropped	0	0
[s] Observation end time (MET)	494745172.184000	494746448.92434	On-chip summing requested	N	N
Observation end date	2013-09-05T05:11:45	2013-09-05T05:34:08	Subarray requested	NONE	NONE
Read mode	TIMED	TIMED	Alternating exposures requested	N	N
			[s] Primary exposure time	0.000000	3.1

2.3 Aspect



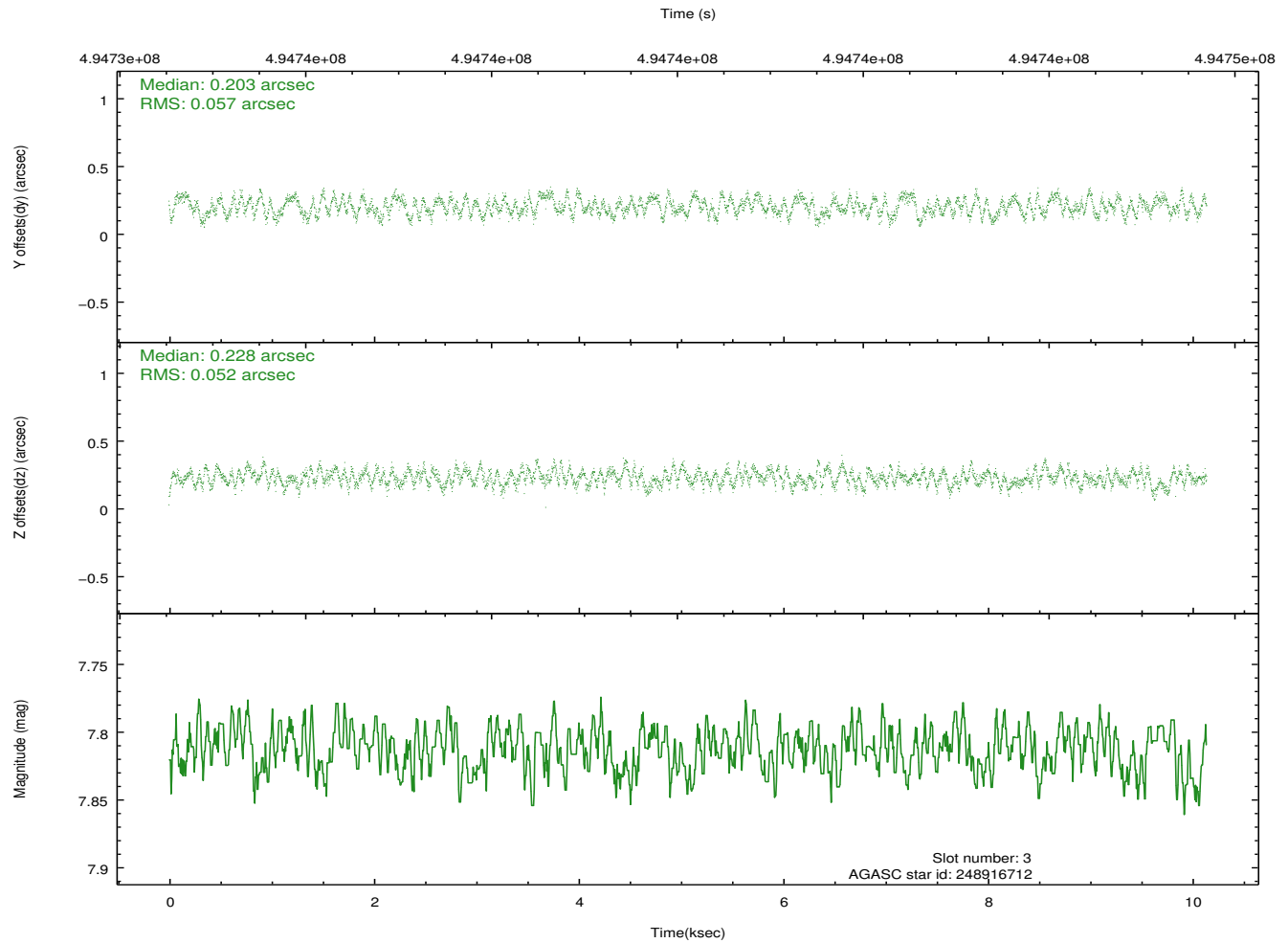
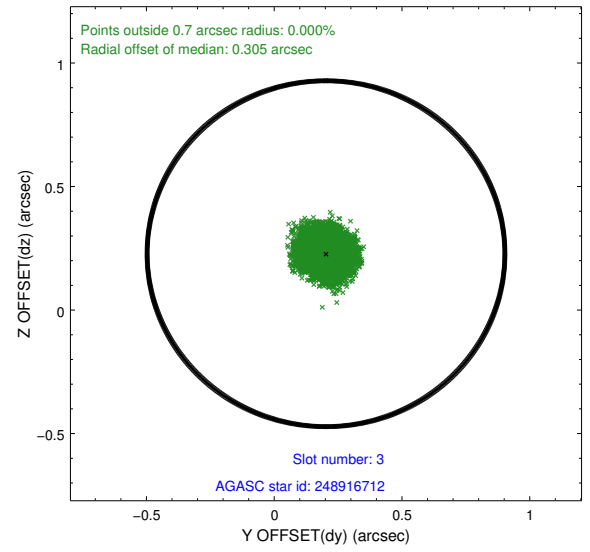
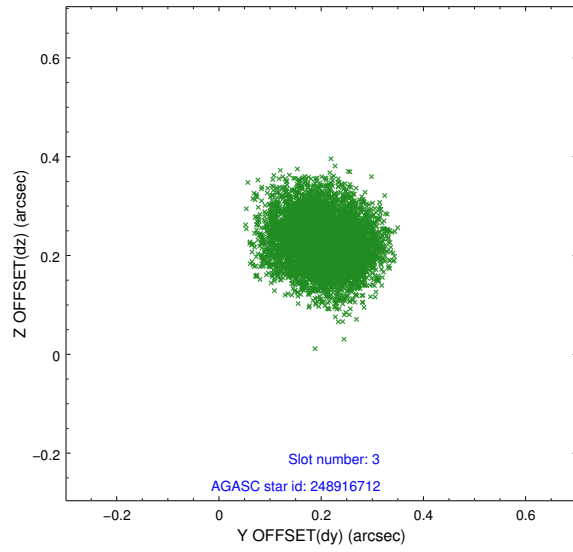


Slot Statistics

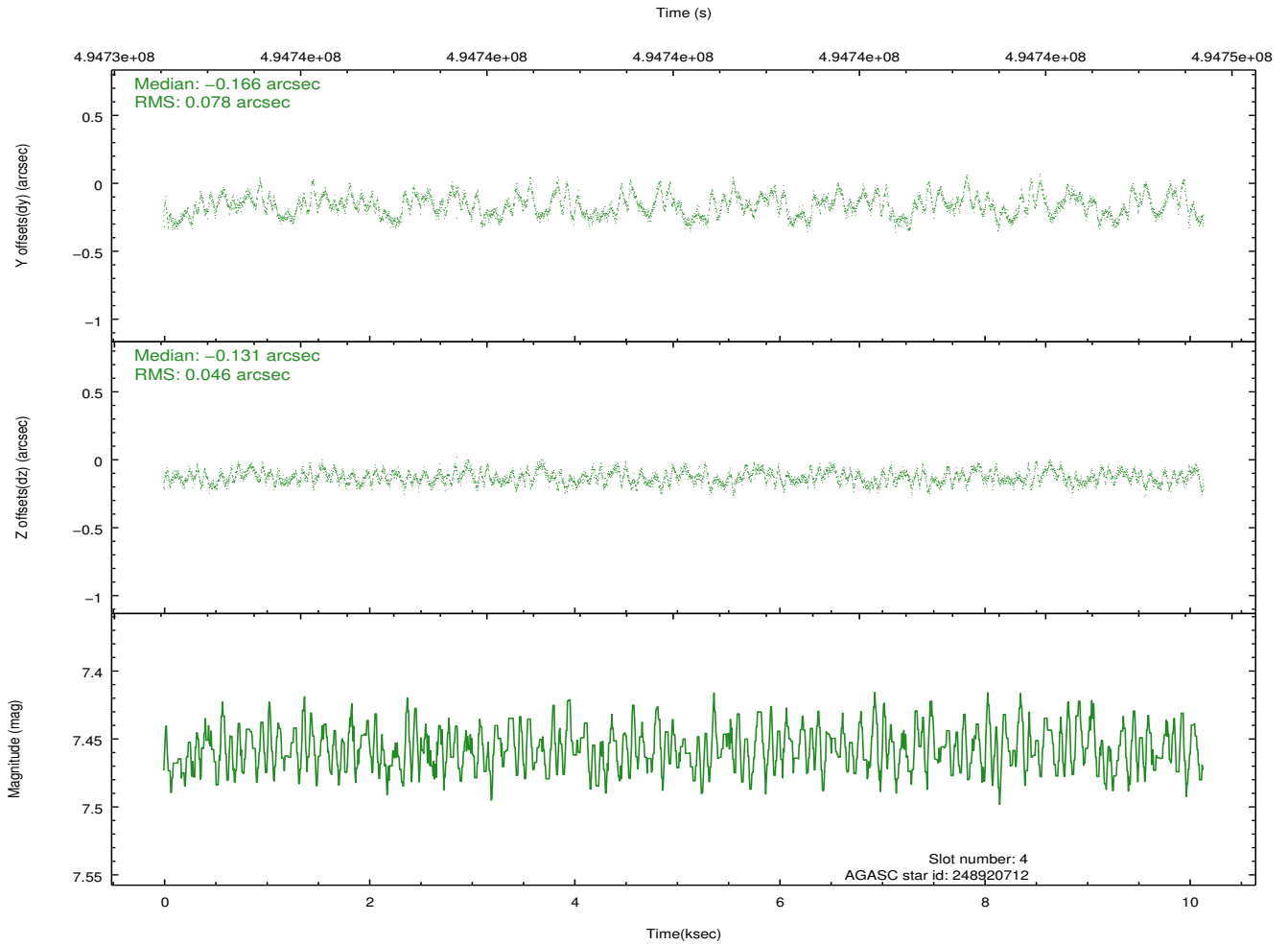
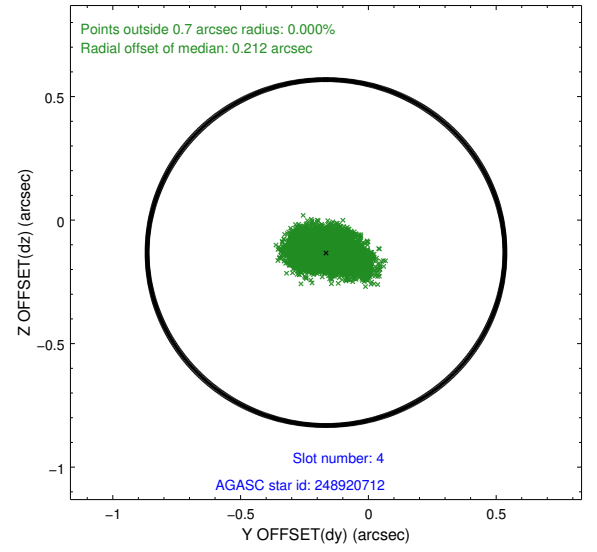
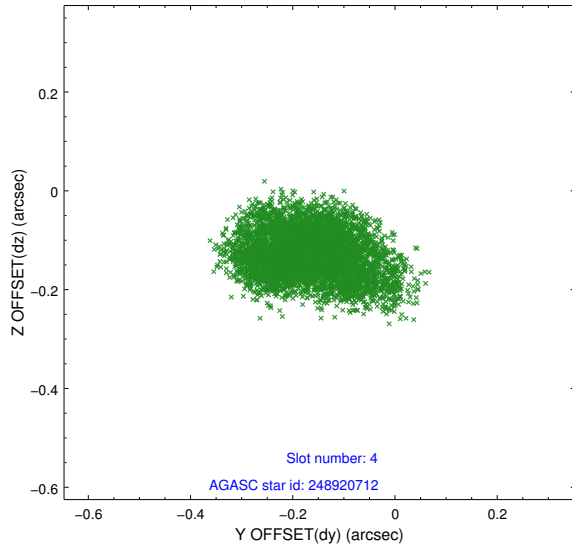
slot	status	used	id	mag	n_pts	med_dy	med_dz	dr1	dr2	ra	dec	mean_y	mean_z
0	FID		ACIS-S-4	7.01	2474	0.238	-0.010	0.007	0.012	0.000000	0.000000	2136.18	165.78
1	FID		ACIS-S-5	7.04	2474	-0.292	-0.016	0.006	0.011	0.000000	0.000000	-1829.88	159.25
2	FID		ACIS-S-6	7.13	2474	0.025	0.039	0.007	0.012	0.000000	0.000000	383.65	803.08
3	GUIDE	used	248916712	7.81	4948	0.203	0.228	0.085	0.124	105.884864	25.093721	-217.36	-1156.04
4	GUIDE	used	248920712	7.46	4947	-0.166	-0.131	0.098	0.155	105.530020	25.425605	809.34	149.83
5	GUIDE	used	248918504	9.21	4916	-0.021	-0.372	0.119	0.189	104.800381	24.827821	-1636.63	2224.80
6	GUIDE	used	248911232	7.98	4931	-0.391	-0.171	0.081	0.133	105.597174	25.845991	2337.61	138.26
7	GUIDE	used	248918152	8.73	4945	0.362	0.445	0.080	0.129	105.865428	24.596274	-1999.96	-1337.48

2.4 Star Slots

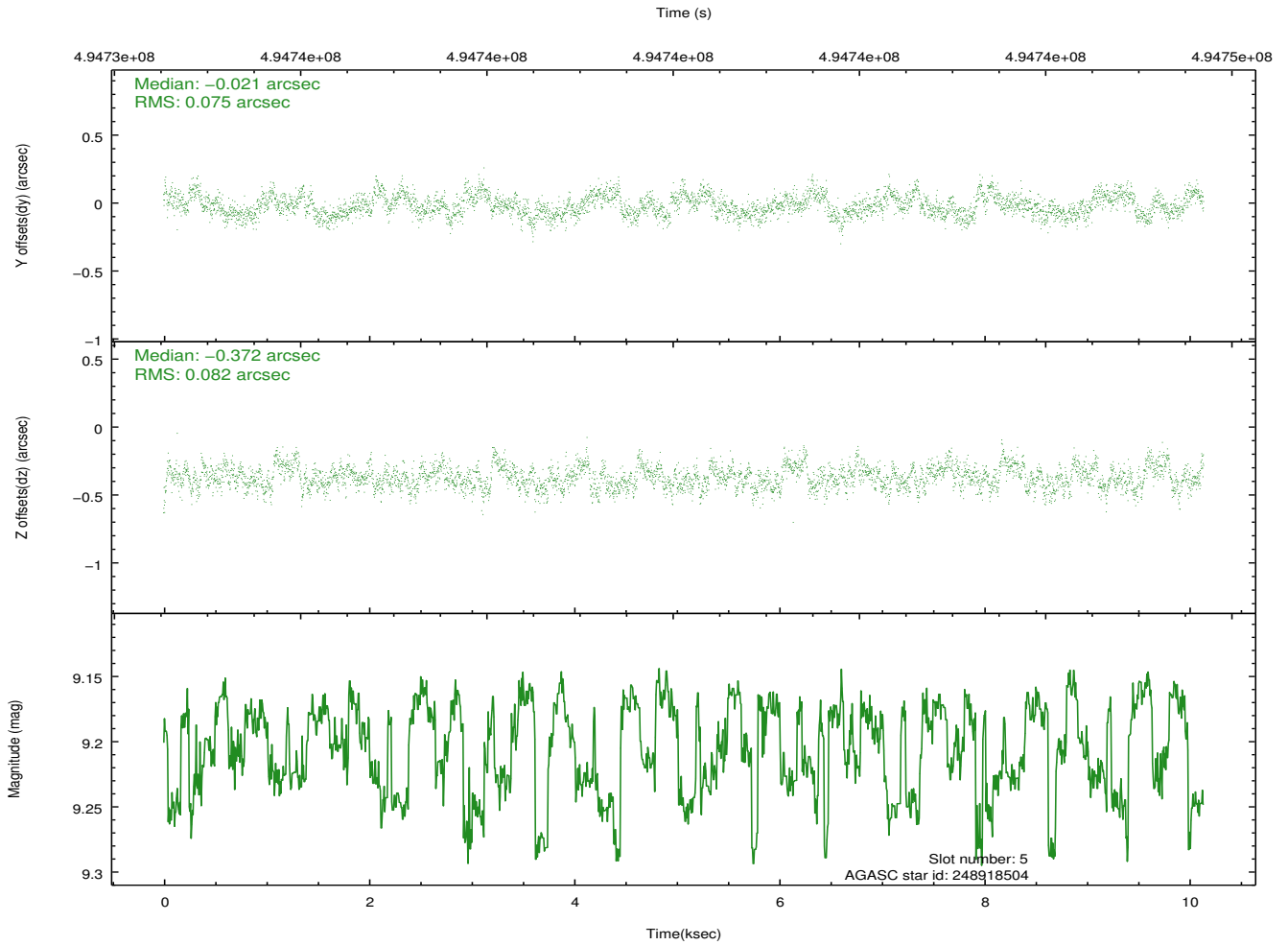
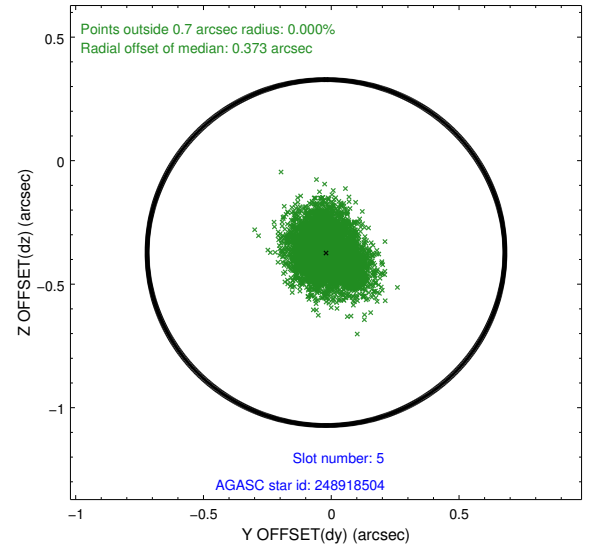
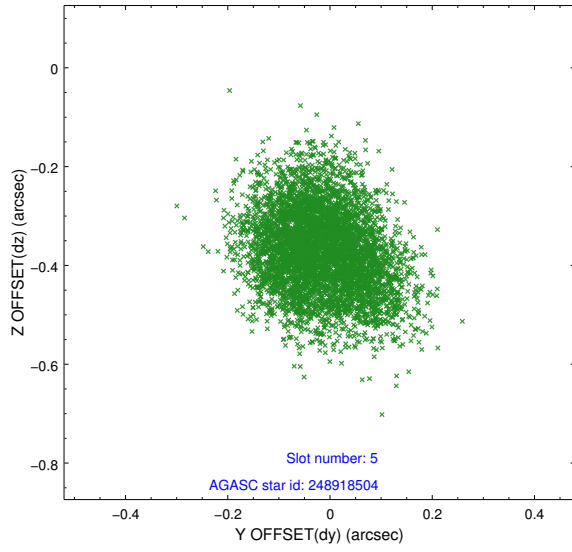
2.4.1 Slot 3



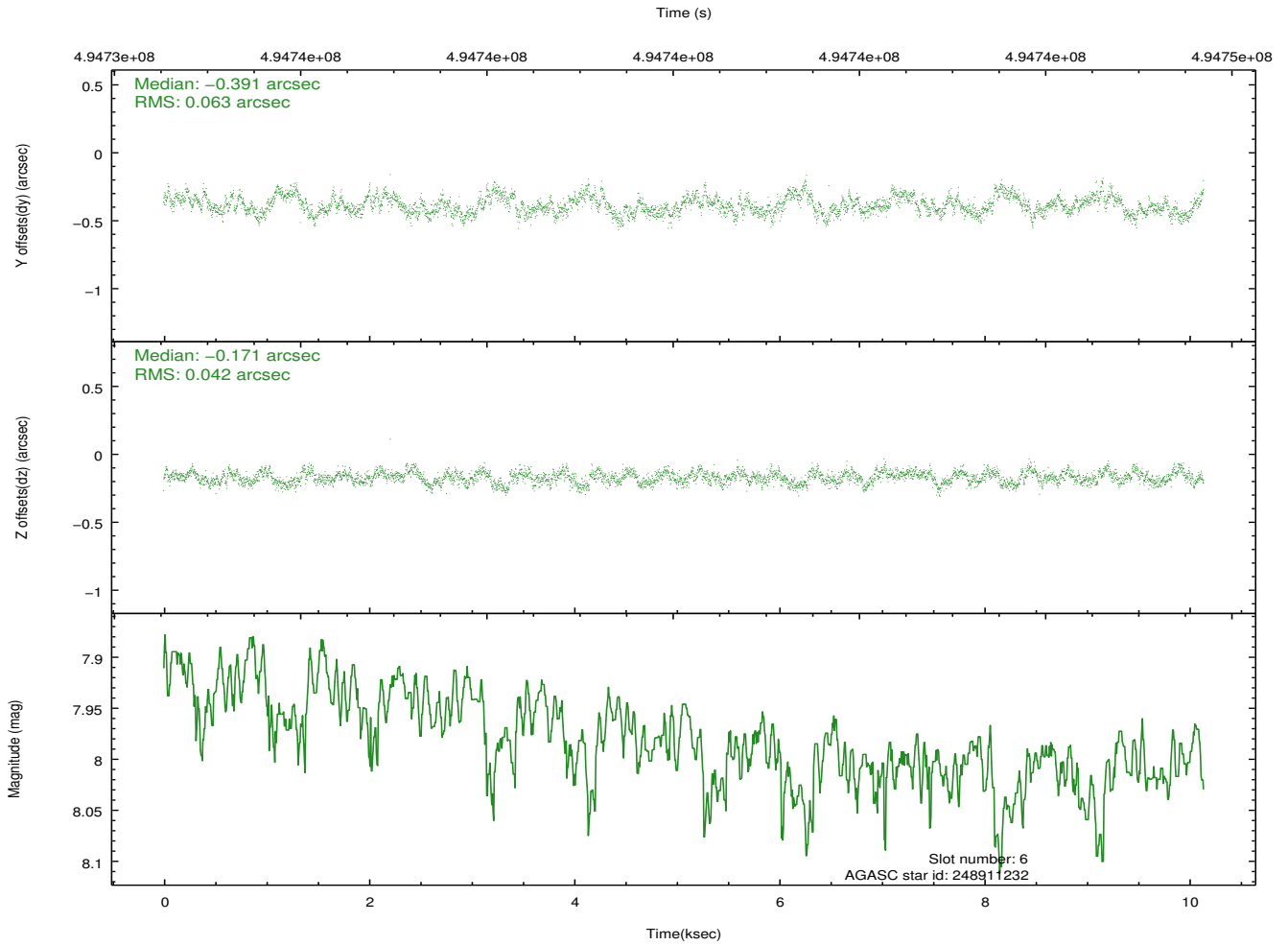
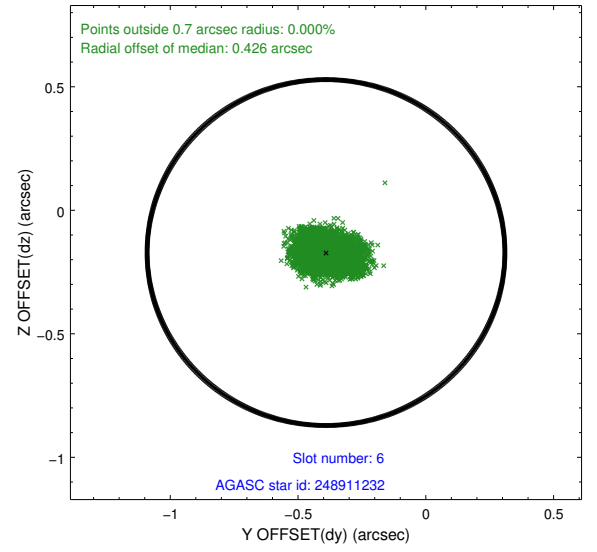
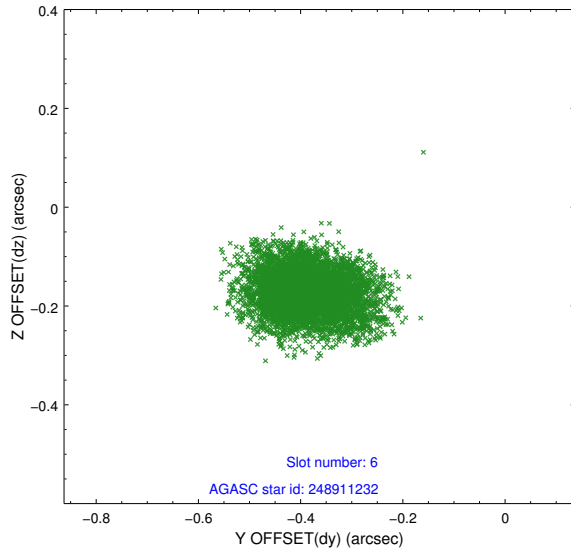
2.4.2 Slot 4



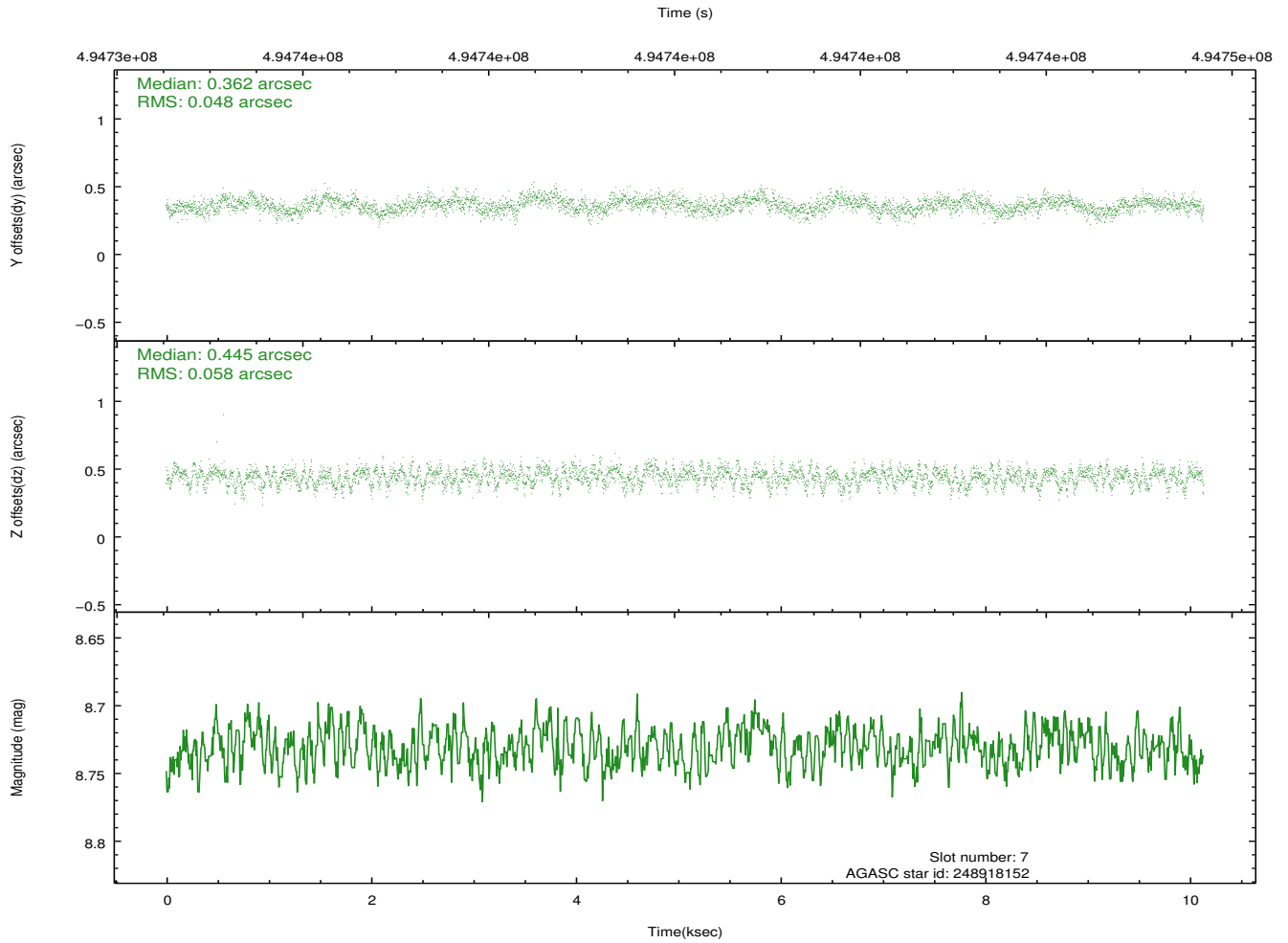
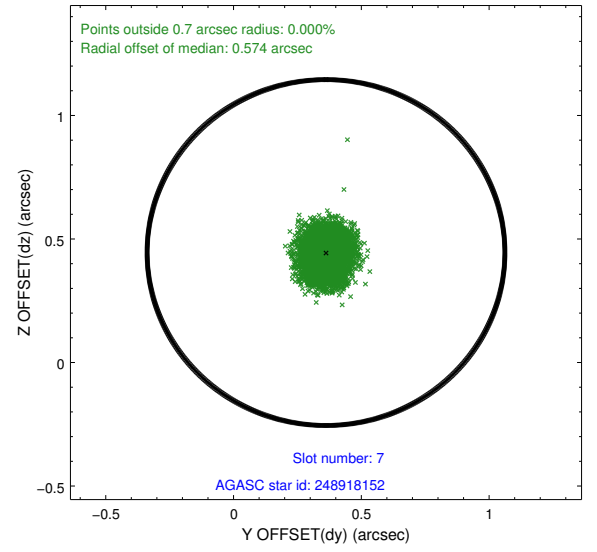
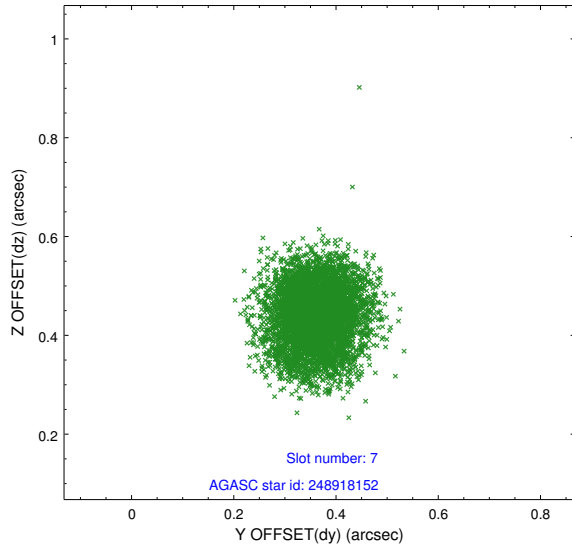
2.4.3 Slot 5



2.4.4 Slot 6

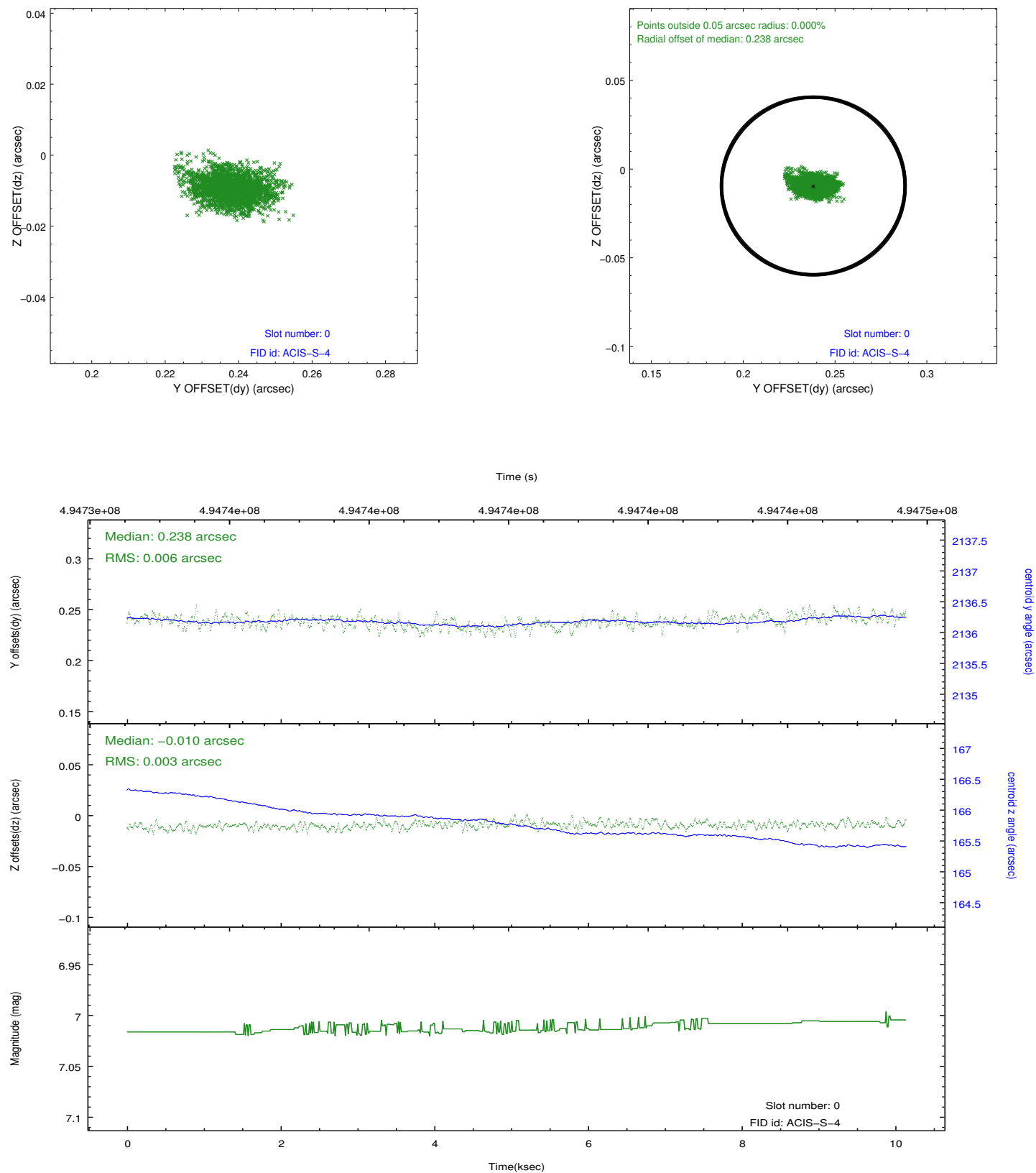


2.4.5 Slot 7

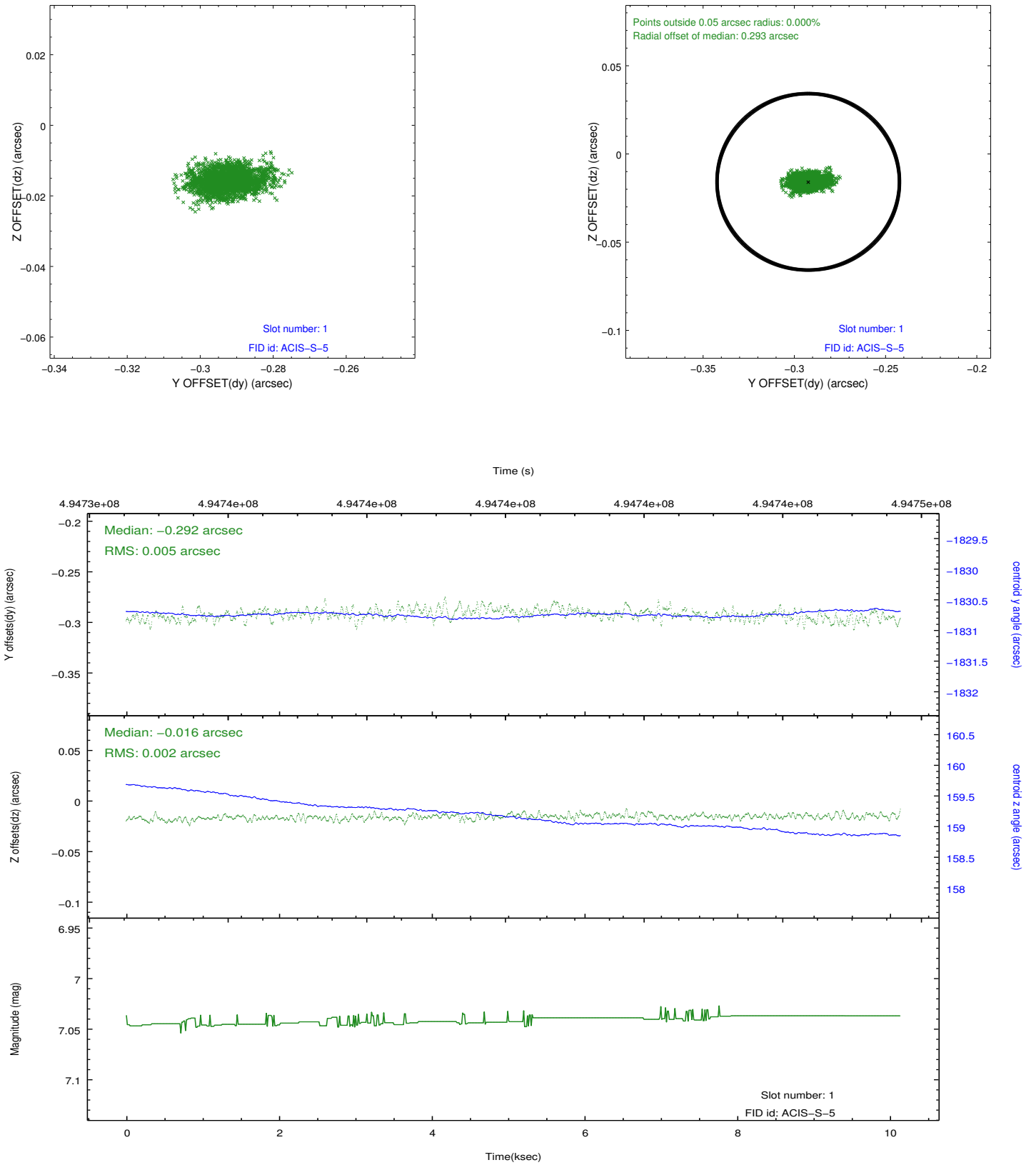


2.5 FID Slots

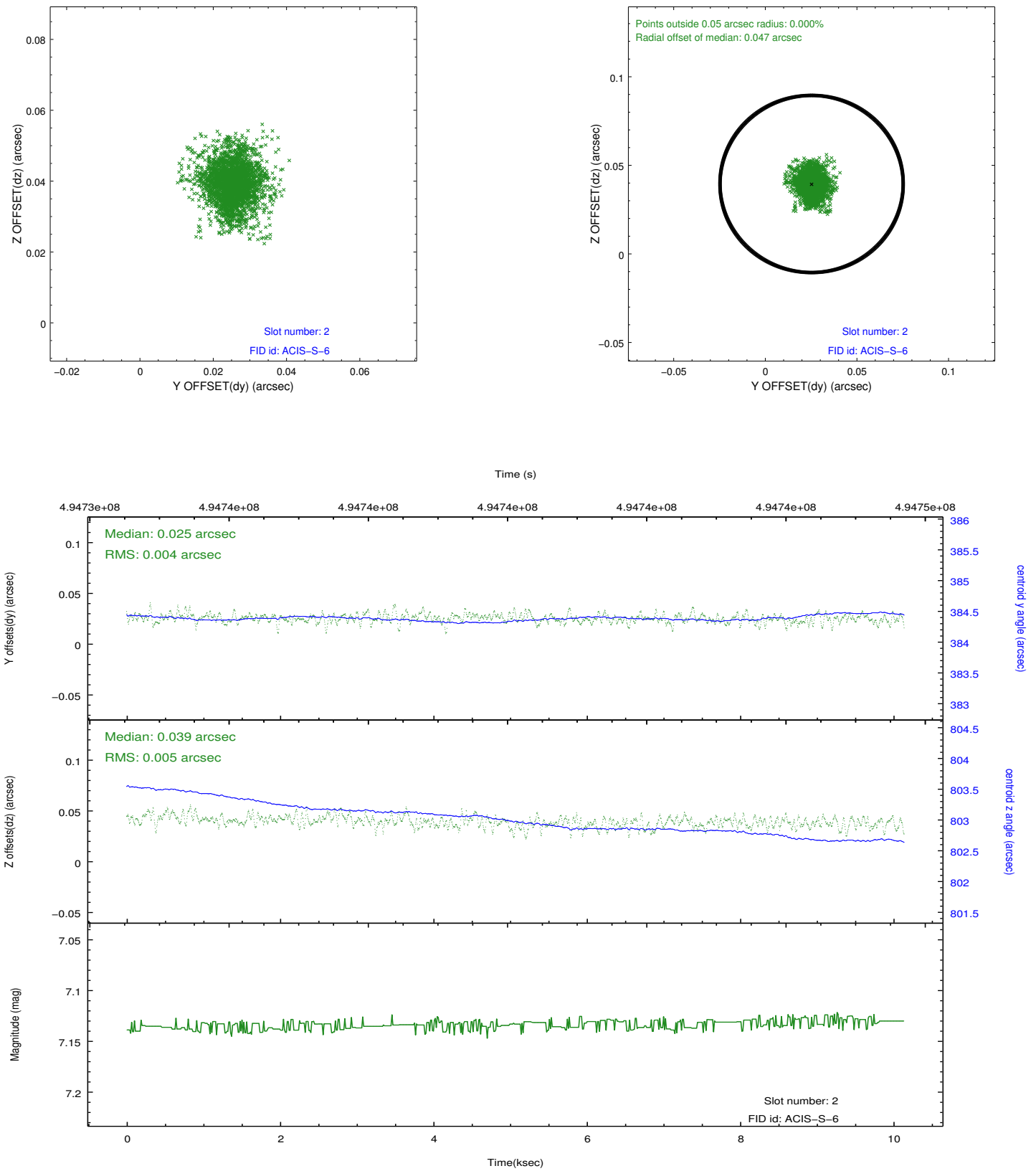
2.5.1 Slot 0



2.5.2 Slot 1



2.5.3 Slot 2



A Summary

A.1 Status

V&V Scientist	Jen Lauer
V&V Date (YYYY-MM-DD)	2014.12.12
V&V Edition	1
V&V Disposition and Status	OK
V&V Charge Time	10.07810007751

A.2 Comments

These data have been reprocessed with new aspect alignment calibration files that correct small mean offsets (up to 0.4 arcsecs) and improve overall astrometric accuracy. The new calibration was determined using data from the time period being reprocessed and was performed using cross-correlation of X-ray sources with radio and optical counterparts.