

V&V Reference Report

L2 ASCDS Version : 10

Observation 14995 - L2 Version 2
Chandra X-Ray Center

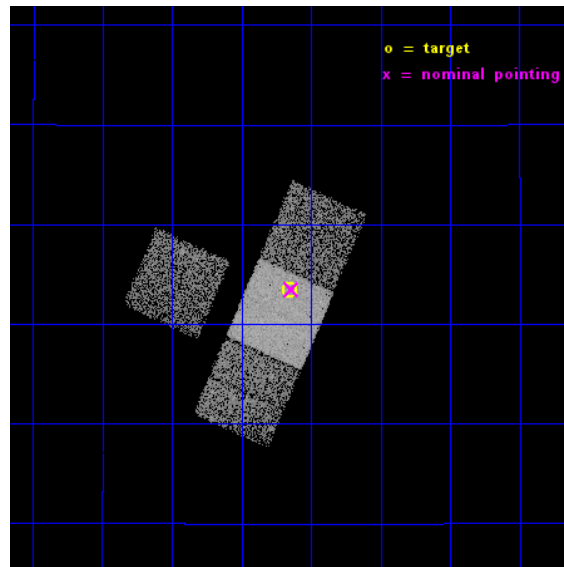
L2 Processing Date : Dec 6 2014

Contents

1	Front	2
2	OBI	3
2.1	OBI	3
2.1.1	Images	3
2.1.2	Bias	3
2.1.3	Parameters	4
2.1.4	Events	4
2.2	Compared Parameters	5
2.3	Aspect	6
2.4	Star Slots	9
2.4.1	Slot 3	9
2.4.2	Slot 4	10
2.4.3	Slot 5	11
2.4.4	Slot 6	12
2.4.5	Slot 7	13
2.5	FID Slots	14
2.5.1	Slot 0	14
2.5.2	Slot 1	15
2.5.3	Slot 2	16
A	Summary	17
A.1	Status	17
A.2	Comments	17

1 Front

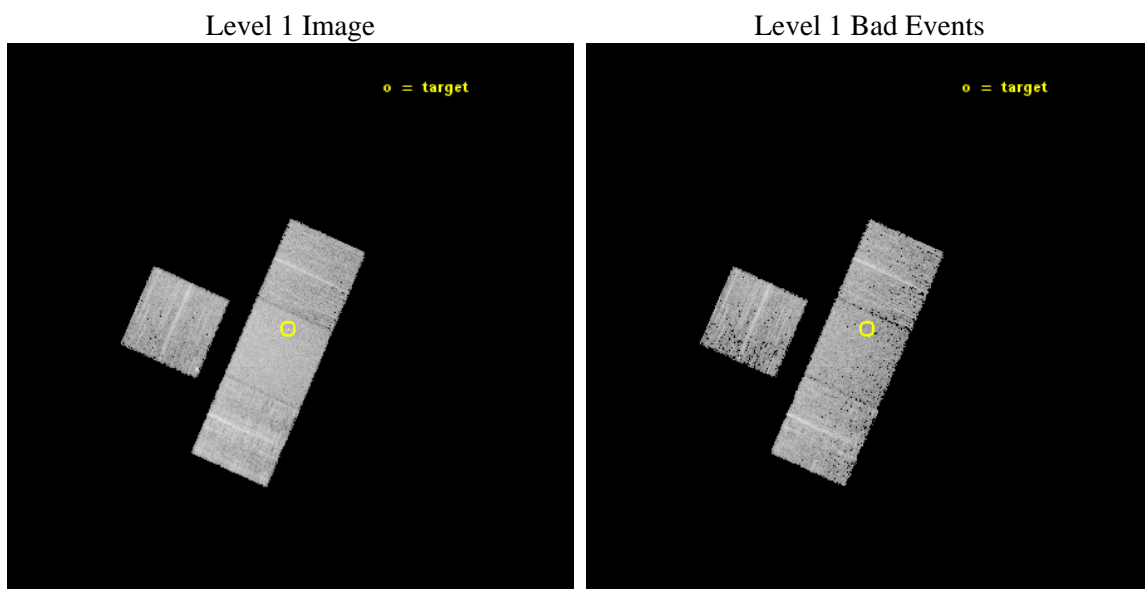
seq_num	702803	Sequence number
obs_id	14995	Observation id
title	The Herschel Legacy of powerful 3C radio galaxies and quasars II: observing Proposal.	Proposal title
observer	Dr Joanna Kuraszkiewicz	Principal investigator
object	3C49	Source name
dtcycle	0	
cycle	P	events from which exps? Prim/Second/Both
ra_targ	25.288333	Observer's specified target RA [deg]
dec_targ	13.891111	Observer's specified target Dec [deg]
ra_nom	25.285294781557	Nominal RA [deg]
dec_nom	13.891524955222	Nominal Dec [deg]
roll_nom	113.79677900942	Nominal Roll [deg]
revision	2	Processing version of data
ontime	9574.7426469922	Sum of GTIs [s]
livetime	9449.6415854863	Livetime [s]
ontime3	9574.6605669856	Sum of GTIs [s]
ontime6	9574.7016069889	Sum of GTIs [s]
ontime7	9574.7426469922	Sum of GTIs [s]
ontime8	9574.6195269823	Sum of GTIs [s]
l2events	41448	Number of level 2 events



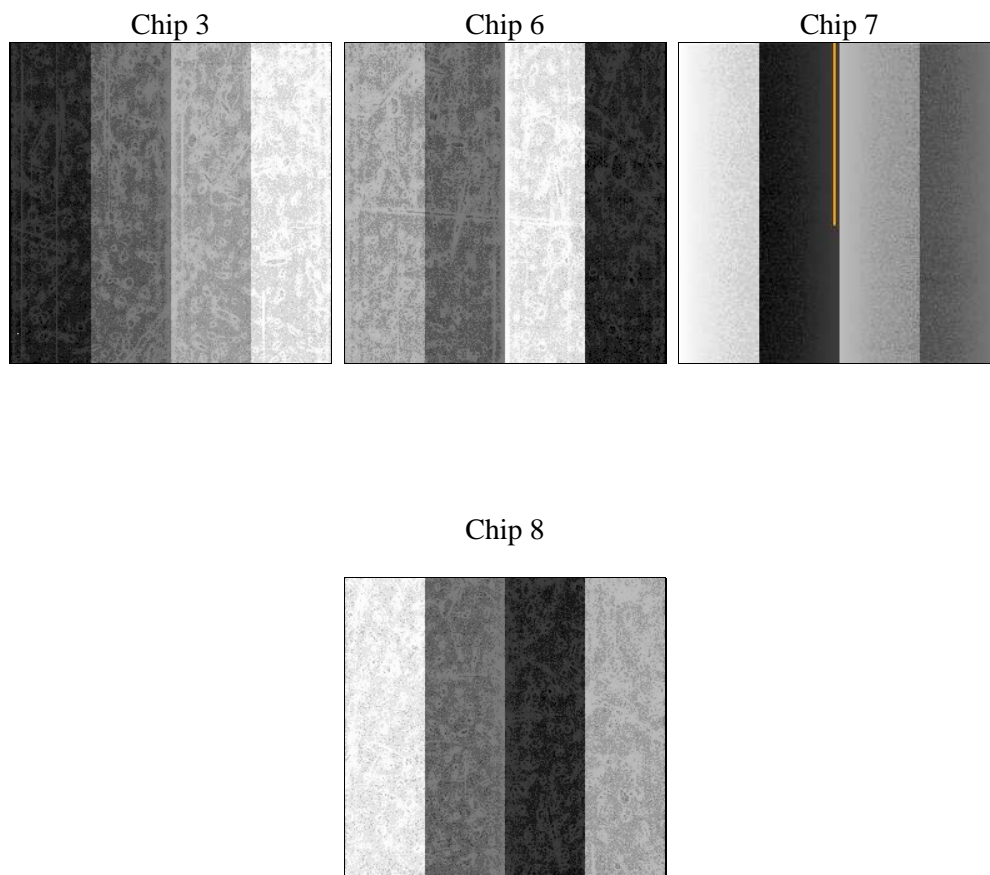
2 OBI

2.1 OBI

2.1.1 Images



2.1.2 Bias



2.1.3 Parameters

obi_num	0	Obi number	sched_exp_time	9500.000000	[s] Scheduled observation exposure time
ascdsver	10.3.1	Processing system revision	ontime	9574.7426469922	Sum of GTIs [s]
caldbver	4.6.4	 	ontime3	9574.6605669856	Sum of GTIs [s]
date	2014-12-06T08:29:27	Date and time of file creation	ontime6	9574.7016069889	Sum of GTIs [s]
revision	2	Processing version of data	ontime7	9574.7426469922	Sum of GTIs [s]
			ontime8	9574.6195269823	Sum of GTIs [s]
			l1events	212053	Number of level 1 events

2.1.4 Events

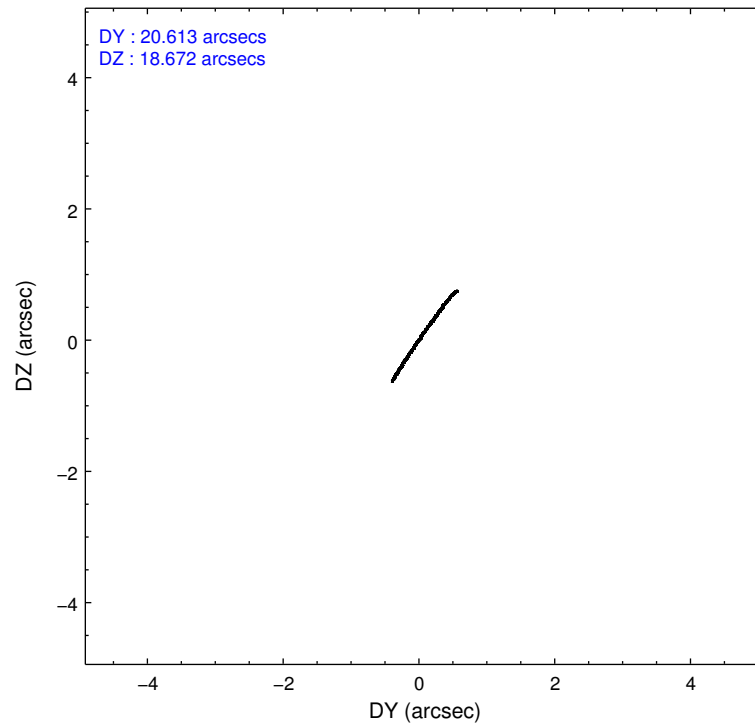
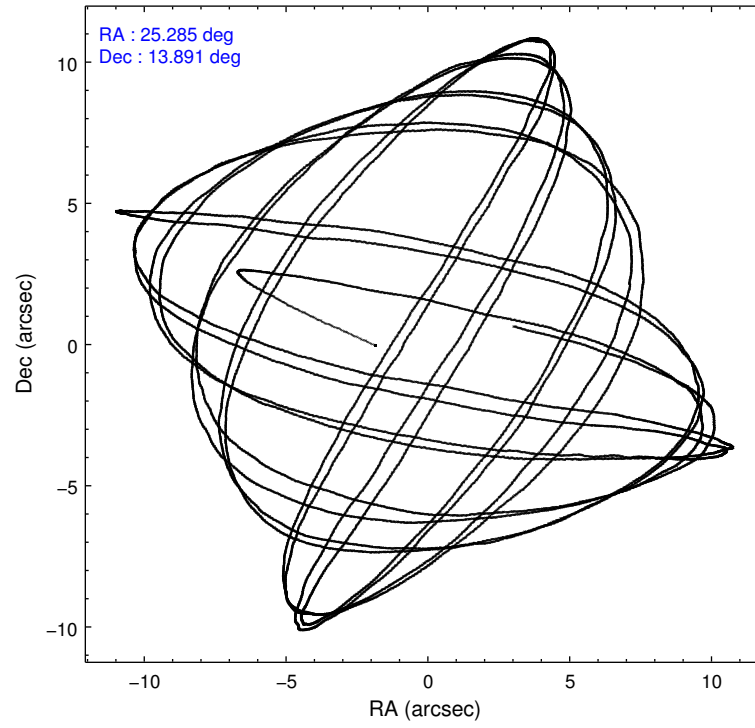
	ccd 3	ccd 6	ccd 7	ccd 8
level 1 events	42380	44485	62750	62438
rejected events	37136	39030	35575	45015
rejected %	87%	87%	56%	72%

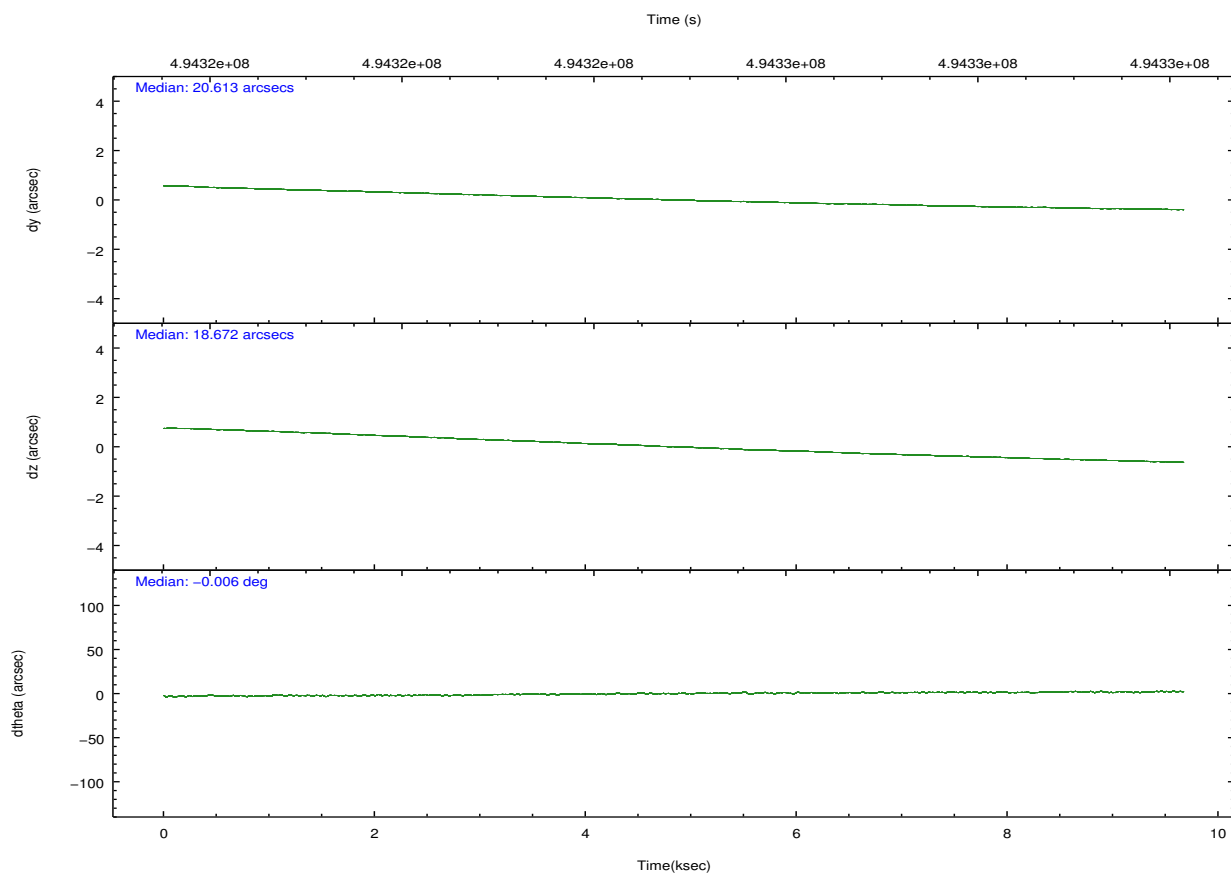
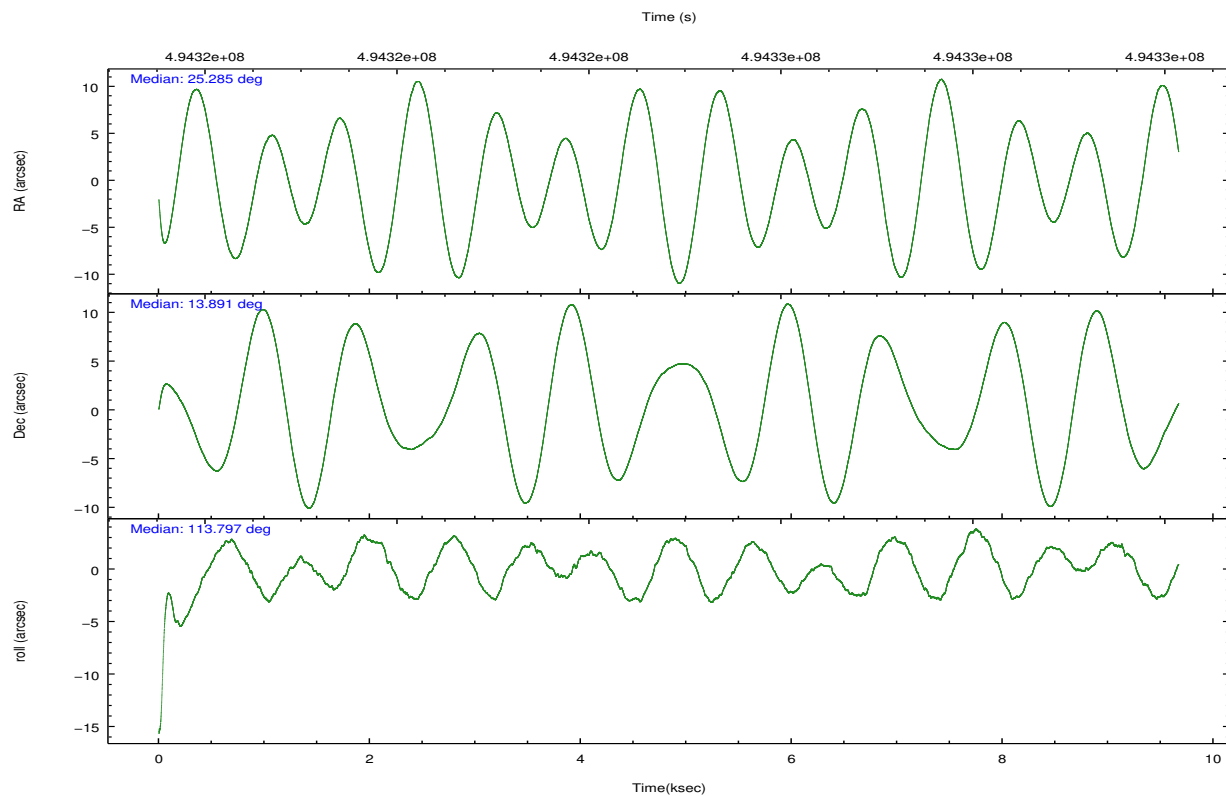
	ccd 3	ccd 6	ccd 7	ccd 8
grade 0 events	2031	1898	2394	4842
	4%	4%	3%	7%
grade 1 events	32	20	61	47
	0%	0%	0%	0%
grade 2 events	1094	1201	5535	4065
	2%	2%	8%	6%
grade 3 events	512	539	2383	1916
	1%	1%	3%	3%
grade 4 events	546	569	2324	1757
	1%	1%	3%	2%
grade 5 events	2376	2440	6348	3404
	5%	5%	10%	5%
grade 6 events	1063	1252	14554	4872
	2%	2%	23%	7%
grade 7 events	34726	36566	29151	41535
	81%	82%	46%	66%

2.2 Compared Parameters

Parameter	Planned	Actual	Parameter	Planned	Actual
Instrument	ACIS	ACIS	Obspar format version number	7	7
Detector	ACIS-3678	ACIS-3678	Obspar file type	PREDICTED	ACTUAL
Grating	NONE	NONE	Obspar update status	NONE	UPDATED
Data mode	FAINT	FAINT	CCD I0 on	N	N
Observation mode	POINTING	POINTING	CCD I1 on	N	N
[deg] Pointing RA	25.308201	25.28529478155701	CCD I2 on	N	N
[deg] Pointing Dec	13.875718	13.89152495522249	CCD I3 on	O1	Y
[deg] Pointing Roll	113.634673	113.7967790094198	CCD S0 on	N	N
[mm] SIM focus pos	-0.684267	-0.6828225247311905	CCD S1 on	N	N
[mm] SIM defocus	0	0.001444936568705701	CCD S2 on	O3	Y
[mm] SIM translation stage pos	-190.132523	-190.145094680475	CCD S3 on	Y	Y
[mm] SIM translation stage offset	0	0.01257209746719923	CCD S4 on	O2	Y
[s] Observation start time (MET)	494320174.184000	494319191.48853	CCD S5 on	N	N
Observation start date	2013-08-31T07:08:27	2013-08-31T06:53:11	Number of optional ACIS chips dropped	0	0
[s] Observation end time (MET)	494329674.184000	494331166.05169	On-chip summing requested	N	N
Observation end date	2013-08-31T09:46:47	2013-08-31T10:12:46	Subarray requested	NONE	NONE
Read mode	TIMED	TIMED	Alternating exposures requested	N	N
			[s] Primary exposure time	0.000000	3.1

2.3 Aspect



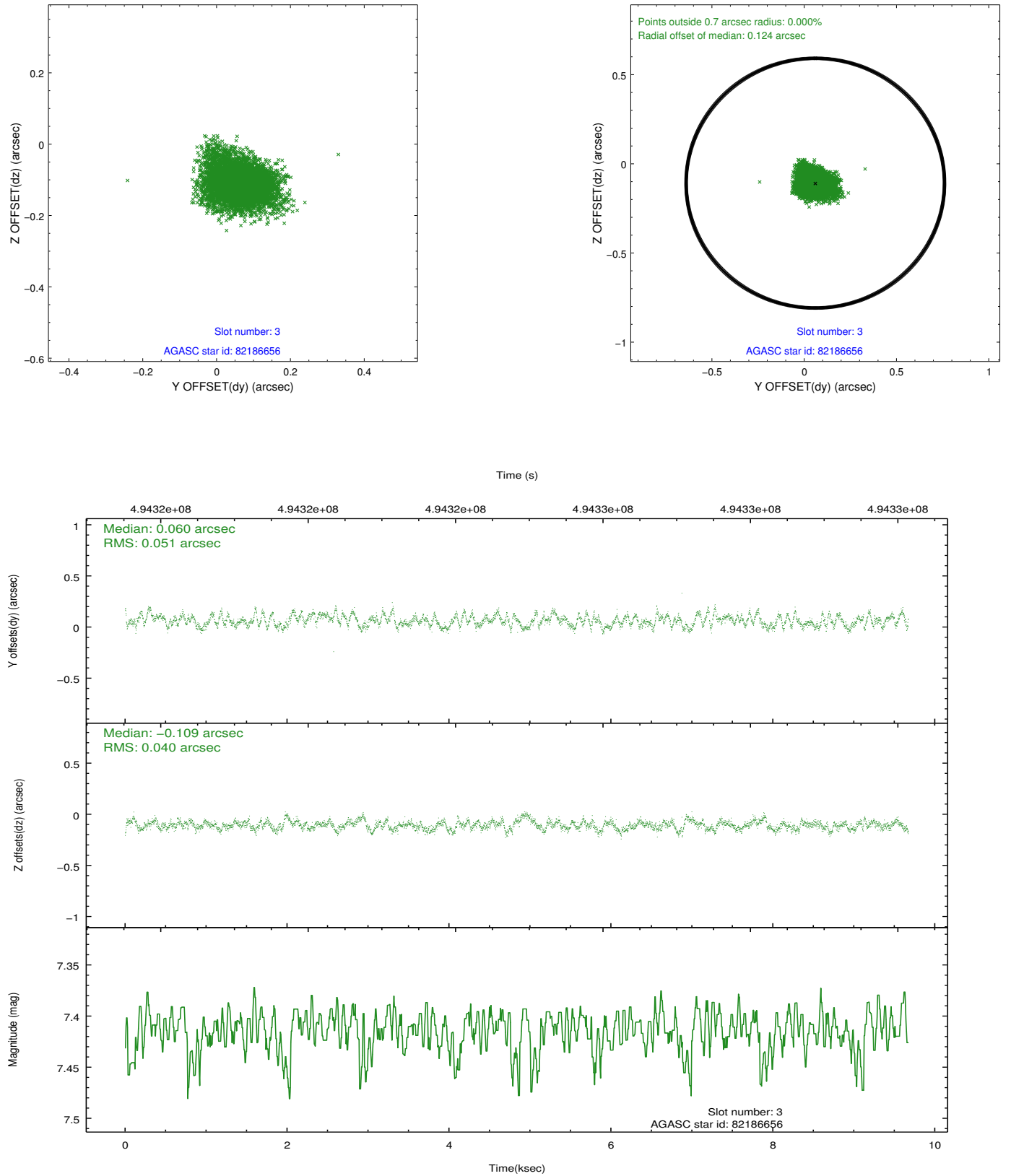


Slot Statistics

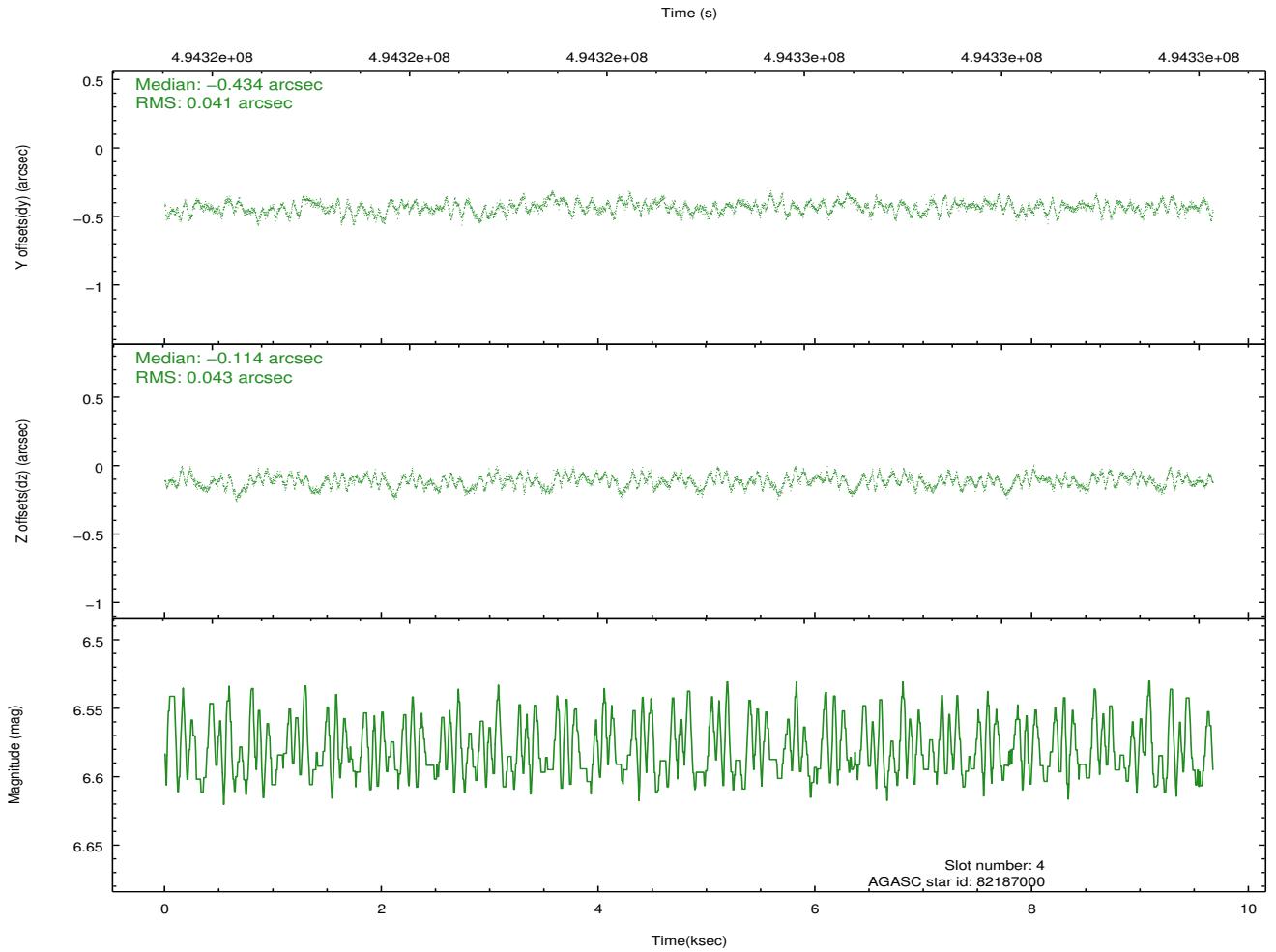
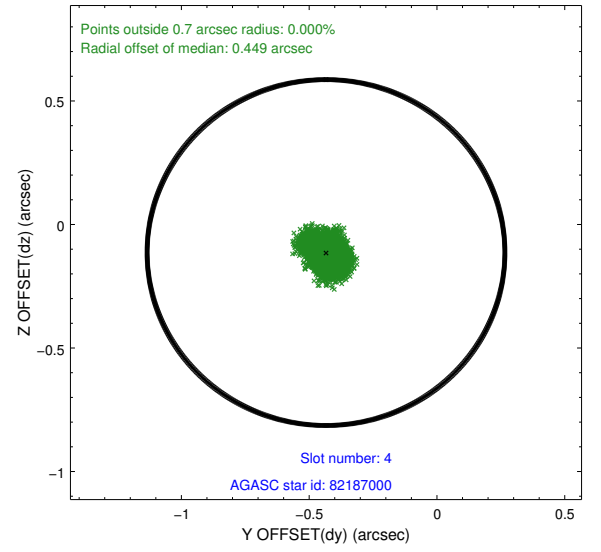
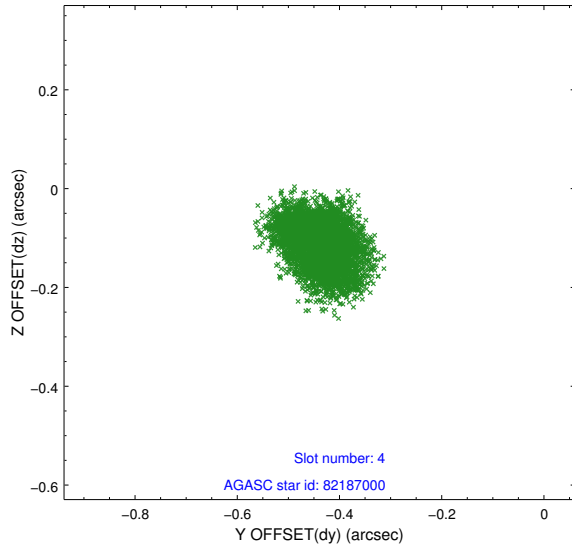
slot	status	used	id	mag	n_pts	med_dy	med_dz	dr1	dr2	ra	dec	mean_y	mean_z
0	FID		ACIS-S-1	7.04	2359	0.080	-0.023	0.014	0.024	0.000000	0.000000	922.35	-1735.72
1	FID		ACIS-S-5	7.08	2359	-0.161	0.052	0.015	0.023	0.000000	0.000000	-1826.58	161.32
2	FID		ACIS-S-6	7.18	2359	0.060	-0.017	0.009	0.015	0.000000	0.000000	387.28	805.85
3	GUIDE	used	82186656	7.41	4718	0.060	-0.109	0.070	0.112	25.268579	13.773450	-282.52	274.59
4	GUIDE	used	82187000	6.58	4719	-0.434	-0.114	0.065	0.102	24.814344	14.285557	2043.02	985.42
5	GUIDE	used	82189408	8.86	4714	0.249	0.125	0.112	0.178	25.276758	13.237916	-2058.32	1022.05
6	GUIDE	used	82319672	9.03	4709	0.396	0.331	0.127	0.191	25.615508	13.734038	-897.80	-779.48
7	GUIDE	used	82191416	8.37	4717	-0.271	-0.235	0.072	0.109	24.614801	13.928289	1147.72	2142.47

2.4 Star Slots

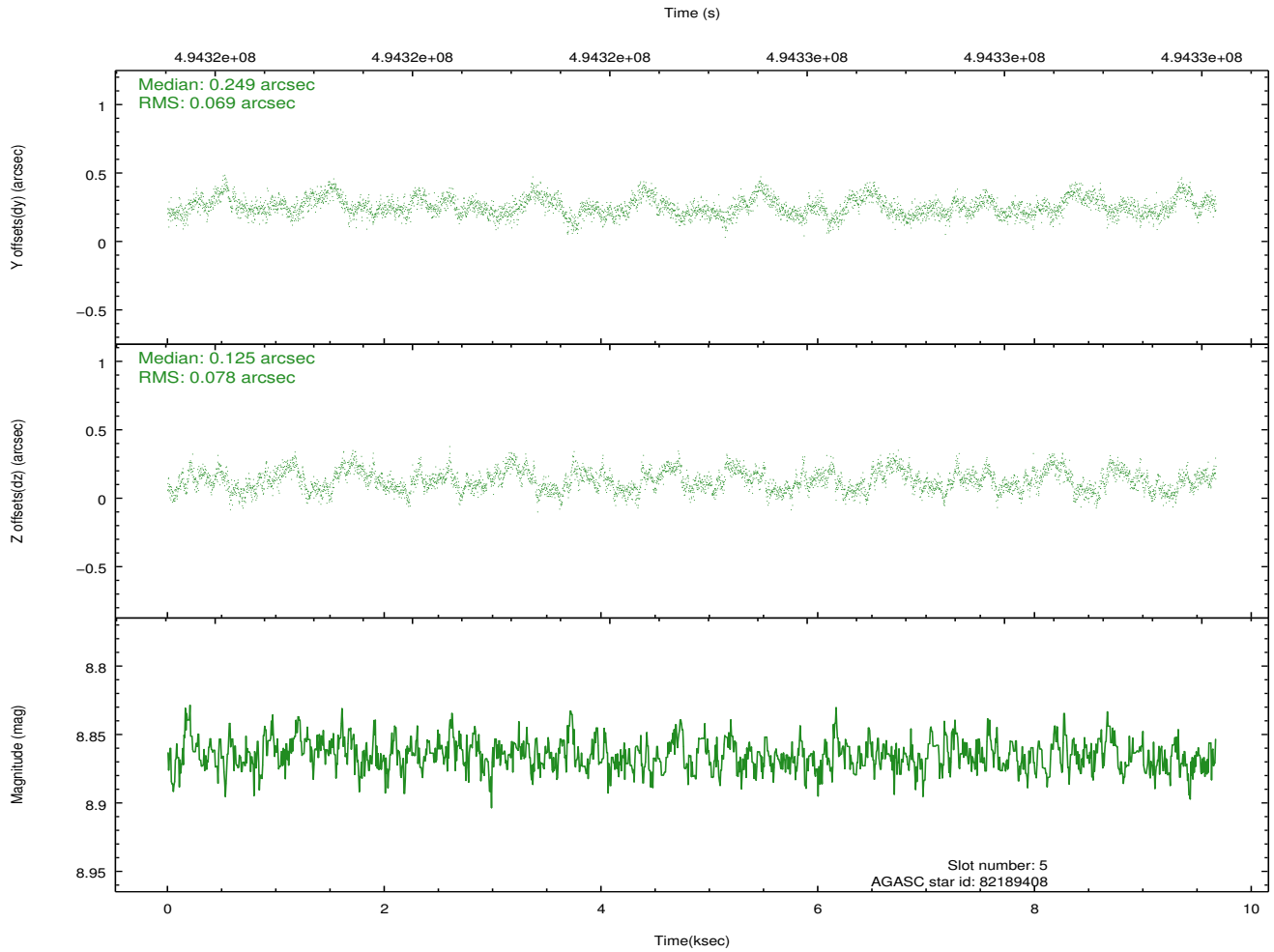
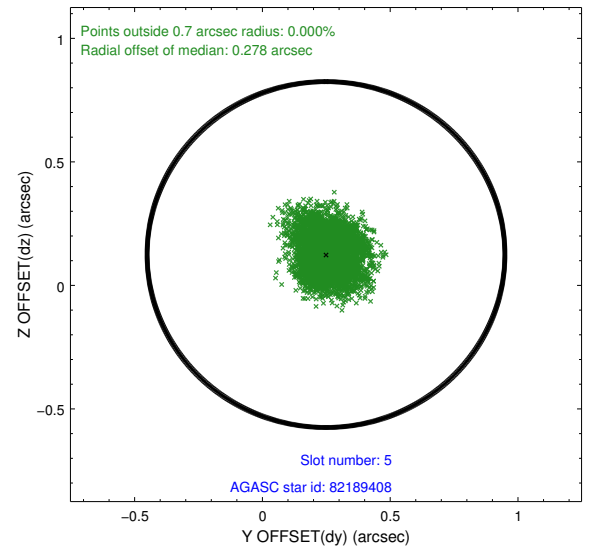
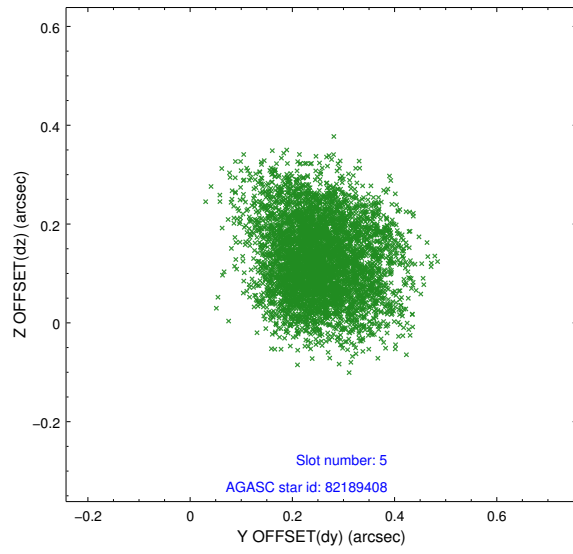
2.4.1 Slot 3



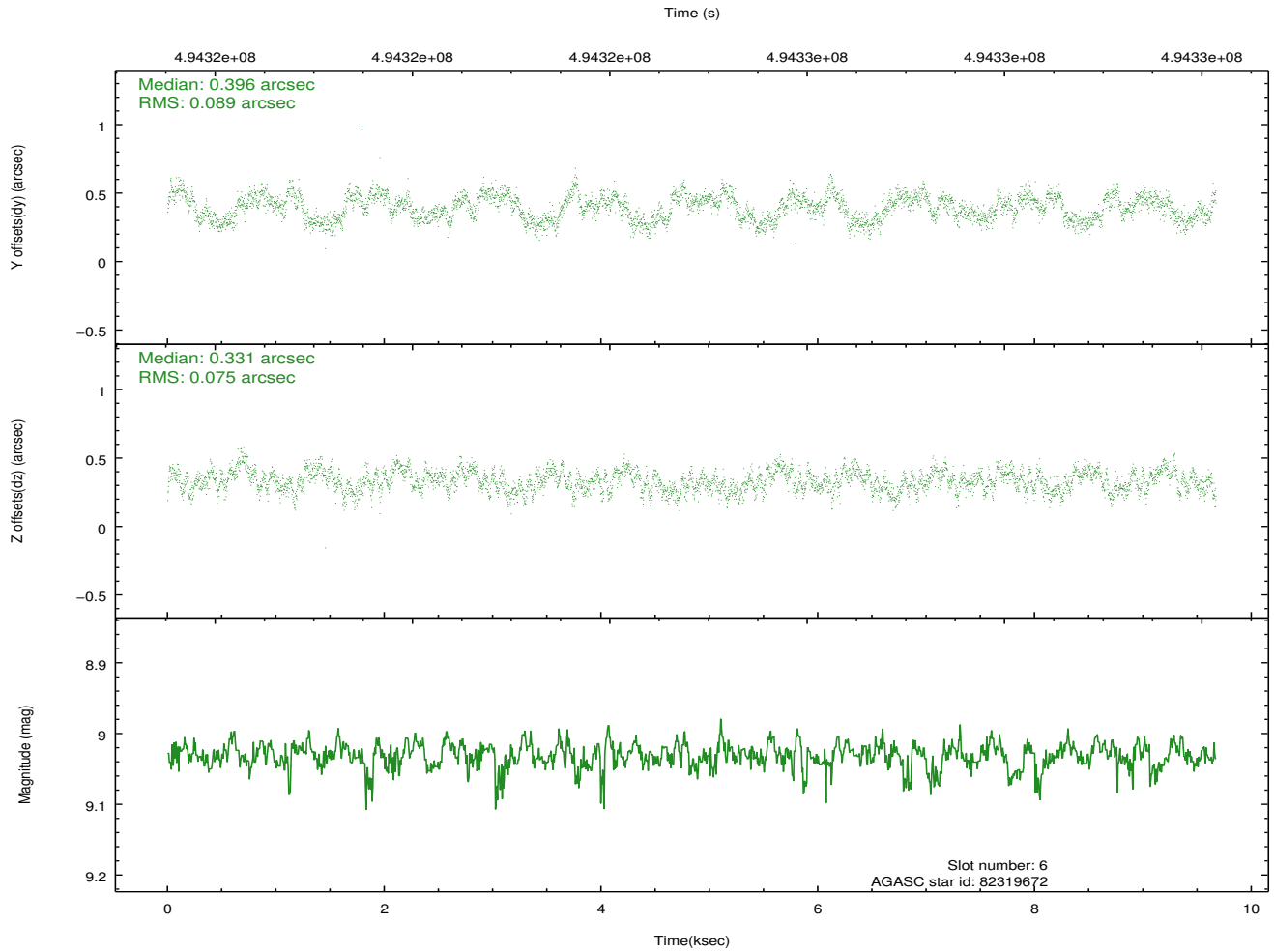
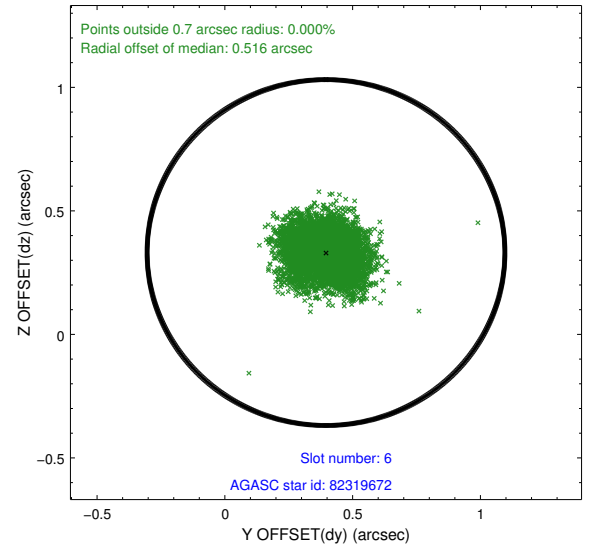
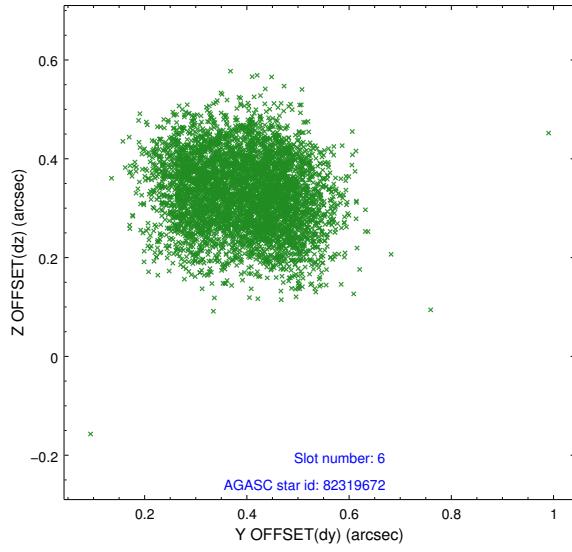
2.4.2 Slot 4



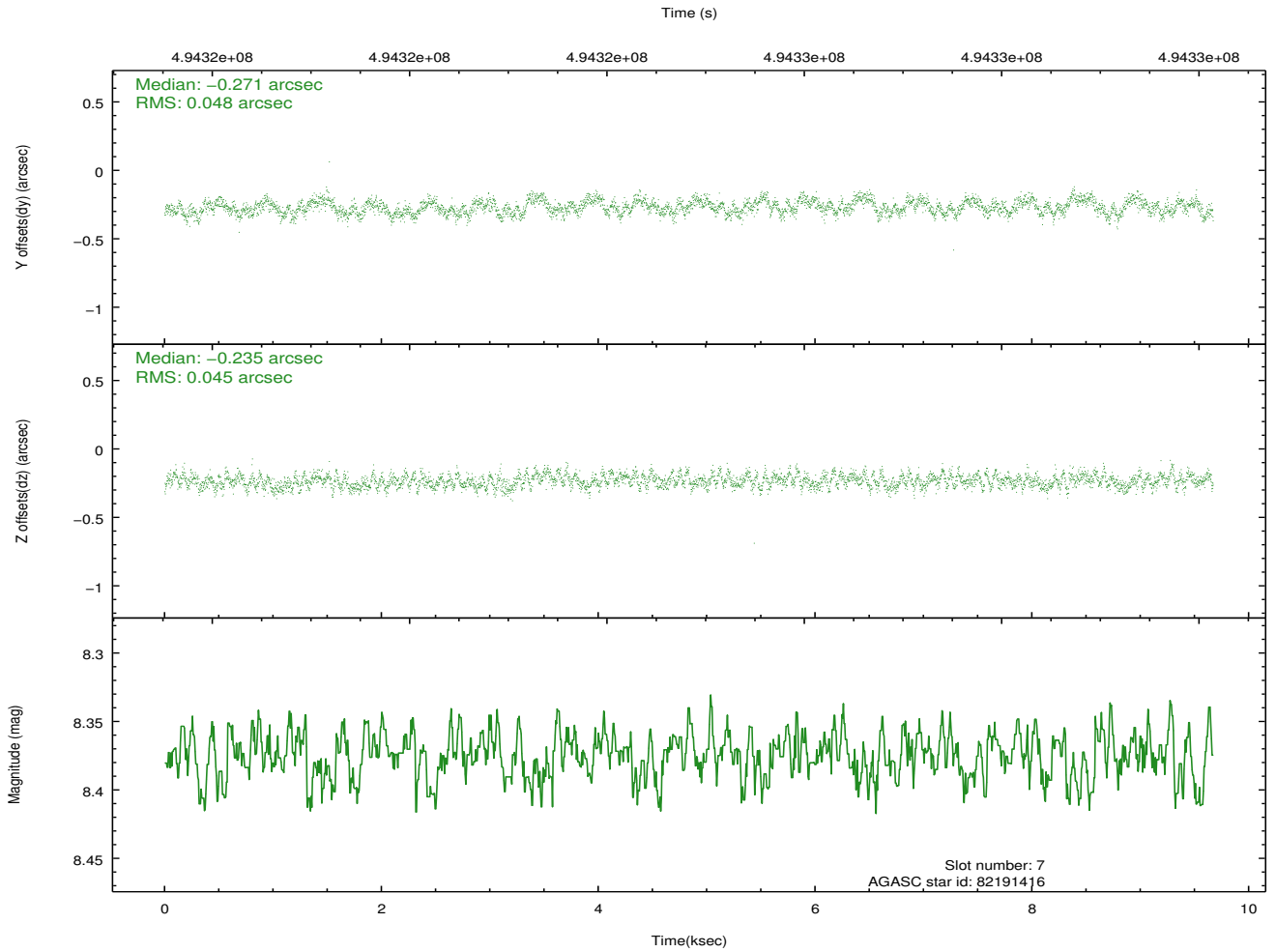
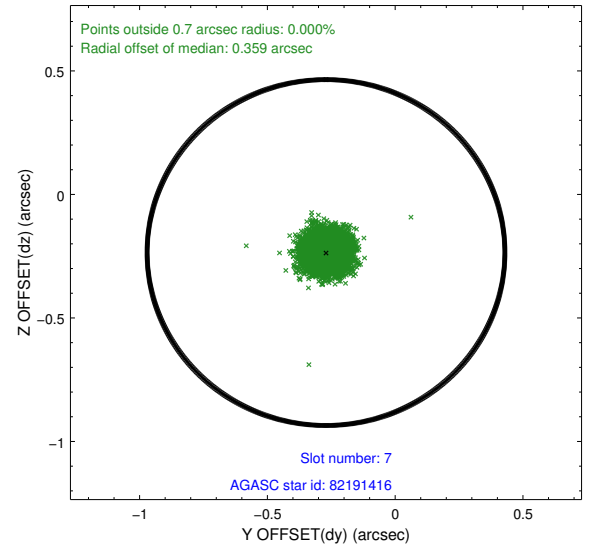
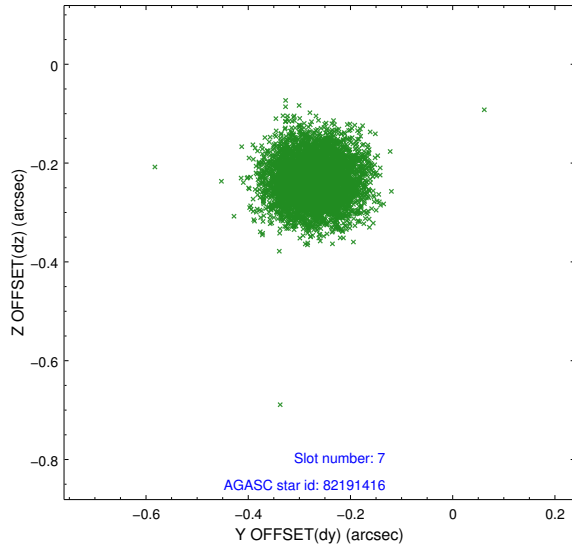
2.4.3 Slot 5



2.4.4 Slot 6

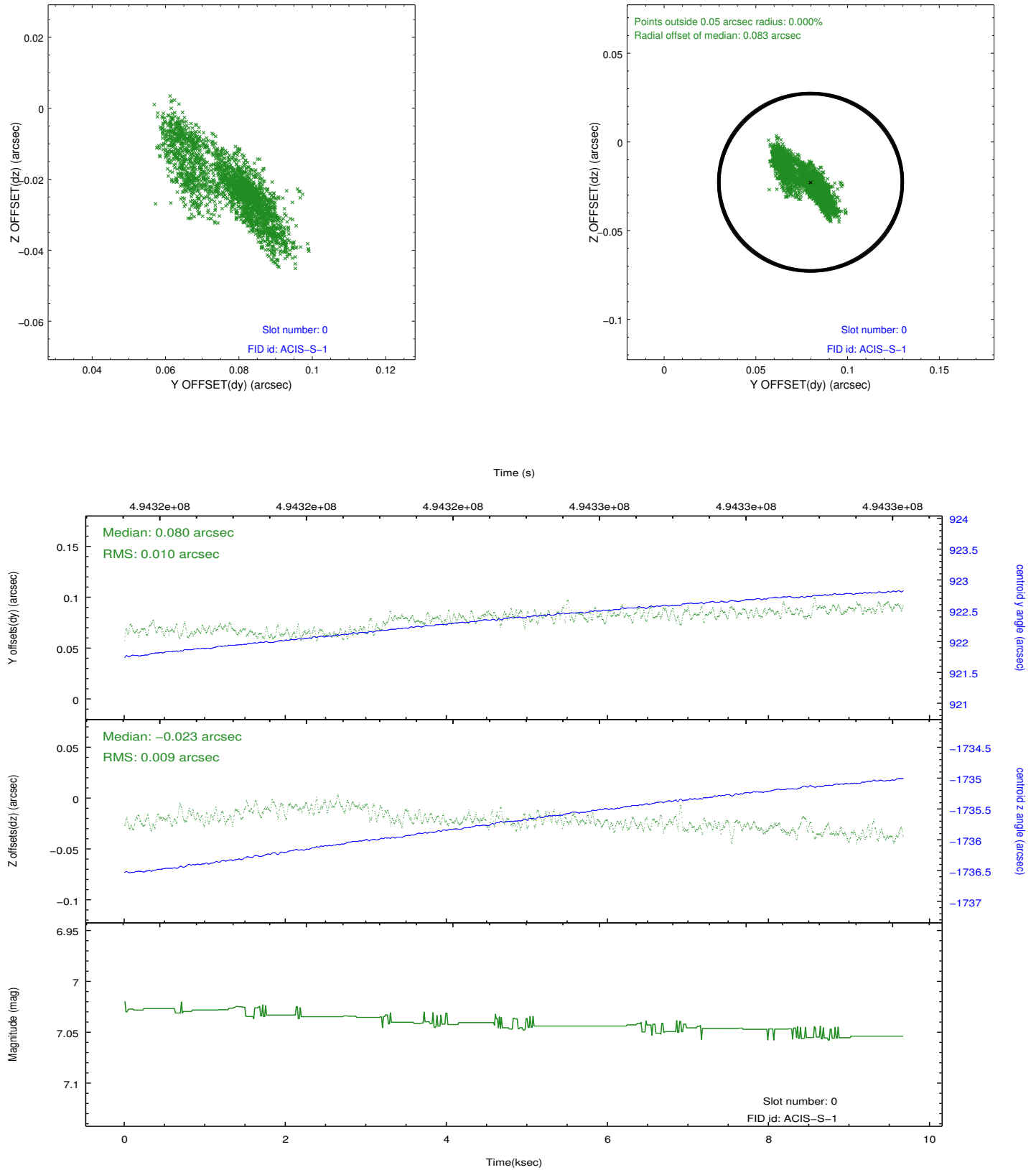


2.4.5 Slot 7

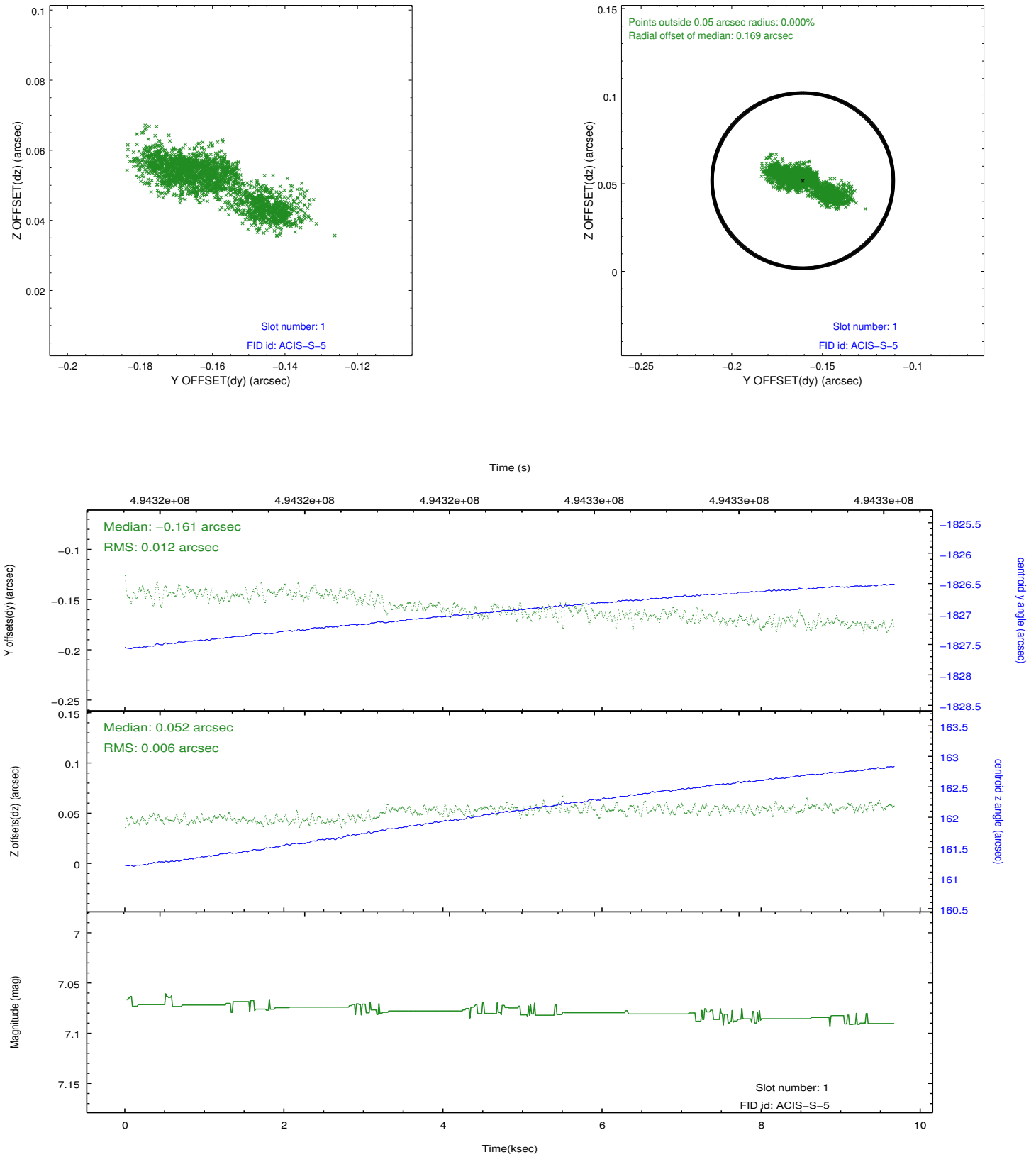


2.5 FID Slots

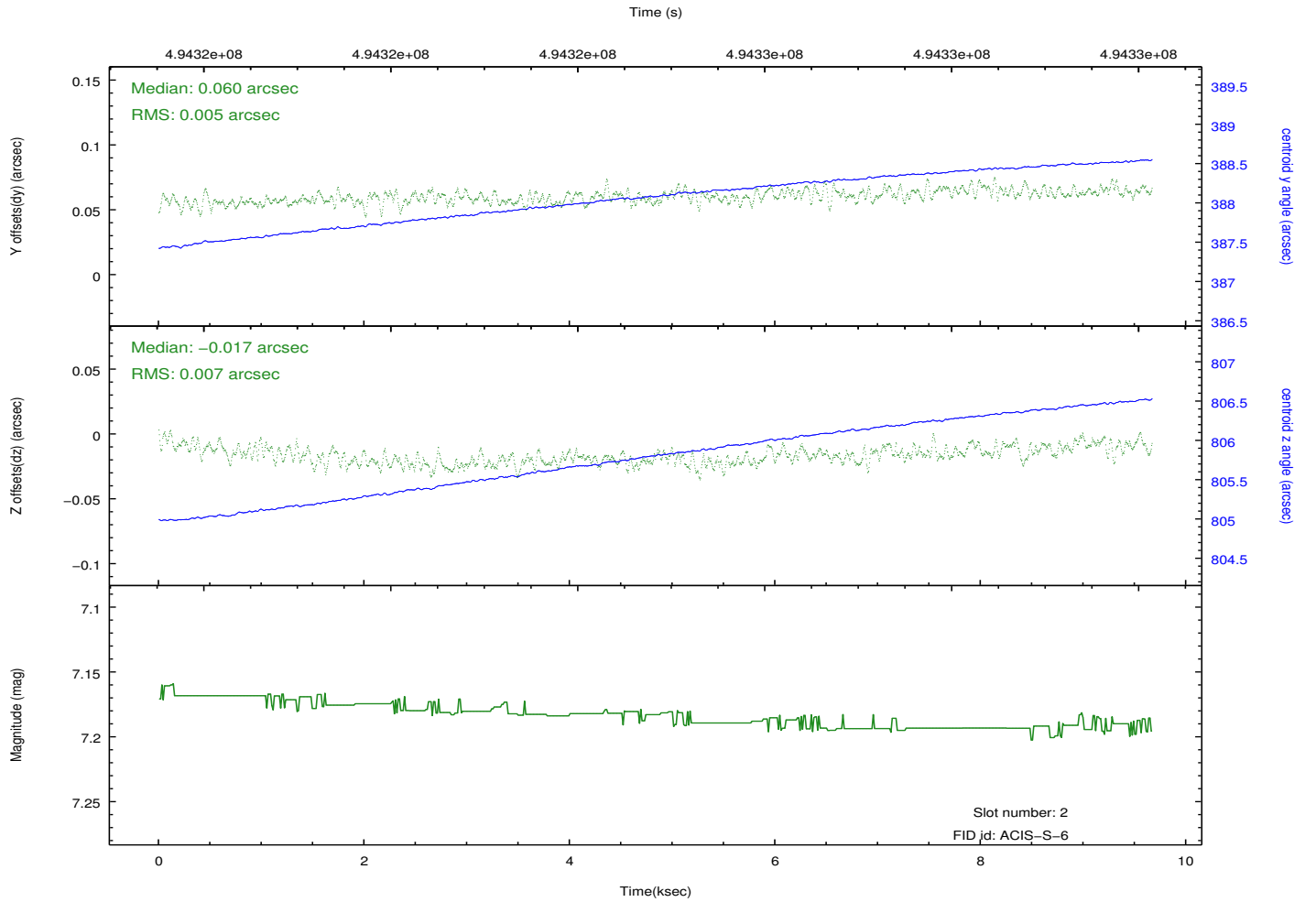
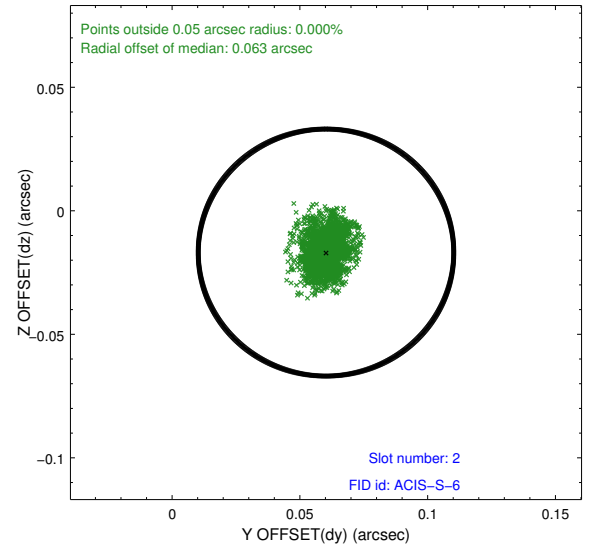
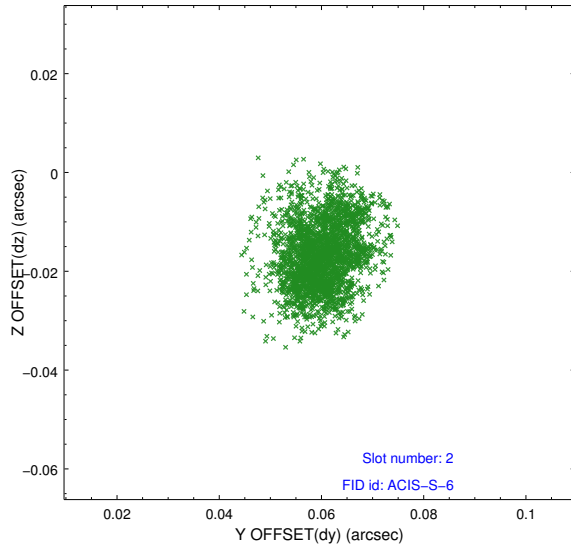
2.5.1 Slot 0



2.5.2 Slot 1



2.5.3 Slot 2



A Summary

A.1 Status

V&V Scientist	Jen Lauer
V&V Date (YYYY-MM-DD)	2014.12.12
V&V Edition	1
V&V Disposition and Status	OK
V&V Charge Time	9.5747426469922

A.2 Comments

These data have been reprocessed with new aspect alignment calibration files that correct small mean offsets (up to 0.4 arcsecs) and improve overall astrometric accuracy. The new calibration was determined using data from the time period being reprocessed and was performed using cross-correlation of X-ray sources with radio and optical counterparts.