

V&V Reference Report

L2 ASCDS Version : 10.0.1

Observation 14988 - L2 Version 2
Chandra X-Ray Center

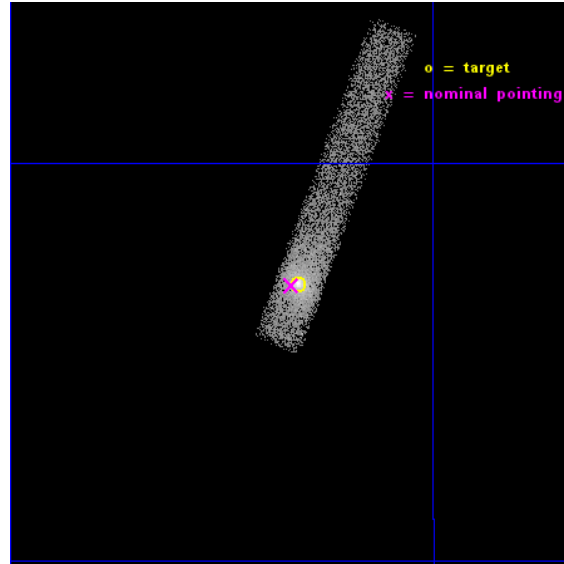
L2 Processing Date : Dec 6 2014

Contents

1	Front	2
2	OBI	3
2.1	OBI	3
2.1.1	Images	3
2.1.2	Bias	3
2.1.3	Parameters	4
2.1.4	Events	4
2.2	Compared Parameters	5
2.3	Aspect	6
2.4	Star Slots	9
2.4.1	Slot 3	9
2.4.2	Slot 4	10
2.4.3	Slot 5	11
2.4.4	Slot 6	12
2.4.5	Slot 7	13
2.5	FID Slots	14
2.5.1	Slot 0	14
2.5.2	Slot 1	15
2.5.3	Slot 2	16
A	Summary	17
A.1	Status	17
A.2	Comments	17

1 Front

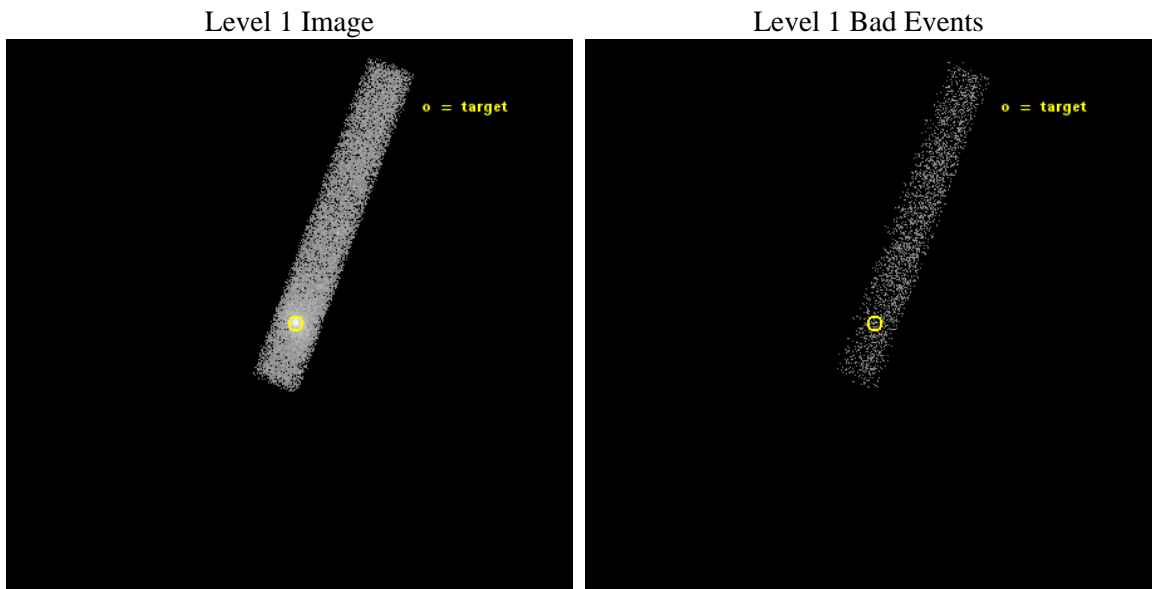
seq_num	702796	Sequence number
obs_id	14988	Observation id
title	Chandra Confirmation of Candidate Inspiring, Binary, or Recoiling Black Holes in Nearby Galaxies	Proposal title
observer	Jeremy Darling	Principal investigator
object	B3 1715+425	Source name
dtcycle	0	
cycle	P	events from which exps? Prim/Second/Both
ra_targ	259.329583	Observer's specified target RA [deg]
dec_targ	42.449278	Observer's specified target Dec [deg]
ra_nom	259.33355202796	Nominal RA [deg]
dec_nom	42.448673775011	Nominal Dec [deg]
roll_nom	290.88880197791	Nominal Roll [deg]
revision	2	Processing version of data
ontime	20069.428857505	Sum of GTIs [s]
livetime	18201.912622443	Livetime [s]
ontime7	20069.428857505	Sum of GTIs [s]
l2events	15747	Number of level 2 events



2 OBI

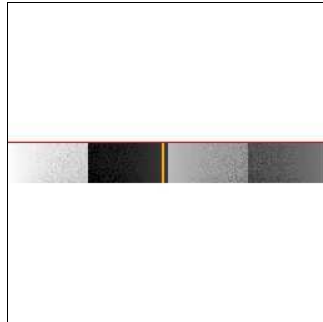
2.1 OBI

2.1.1 Images



2.1.2 Bias

Chip 7



2.1.3 Parameters

obi_num	0	Obi number	sched_exp_time	20000.000000	[s] Scheduled observation exposure time
ascdsver	10.3.1	Processing system revision	ontime	20069.428857505	Sum of GTIs [s]
caldsver	4.6.4	 	ontime7	20069.428857505	Sum of GTIs [s]
date	2014-12-06T23:57:38	Date and time of file creation	l1events	25451	Number of level 1 events
revision	2	Processing version of data			

2.1.4 Events

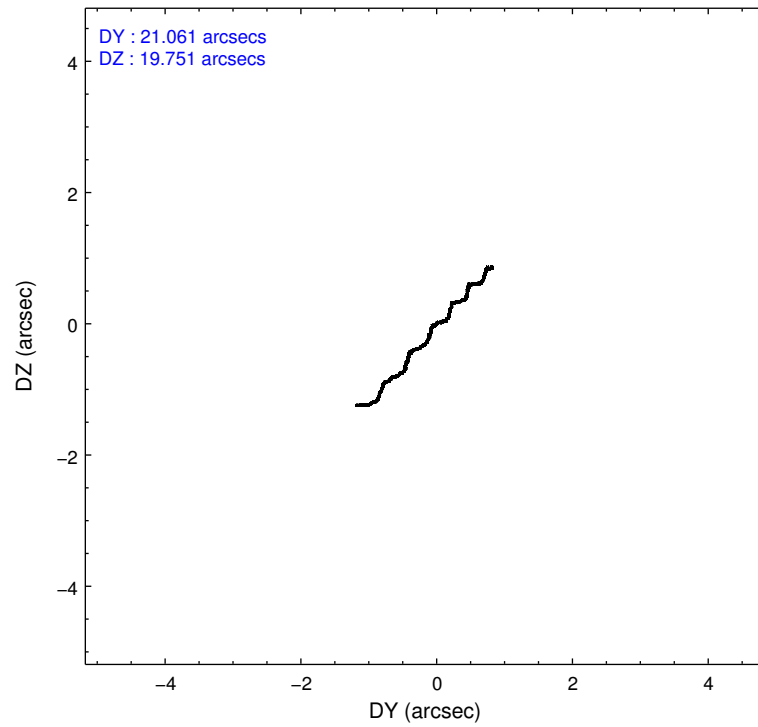
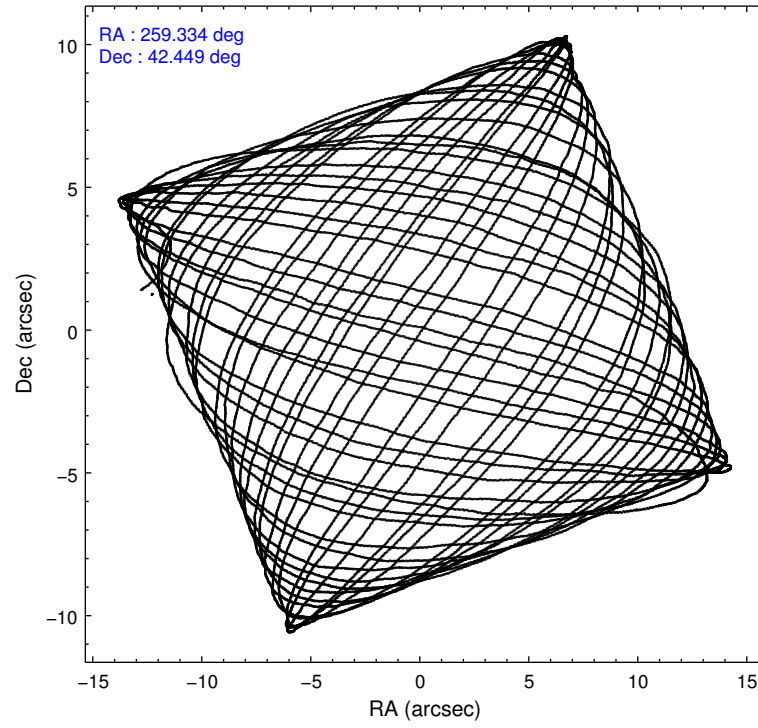
	ccd 7
level 1 events	25451
rejected events	9279
rejected %	36%

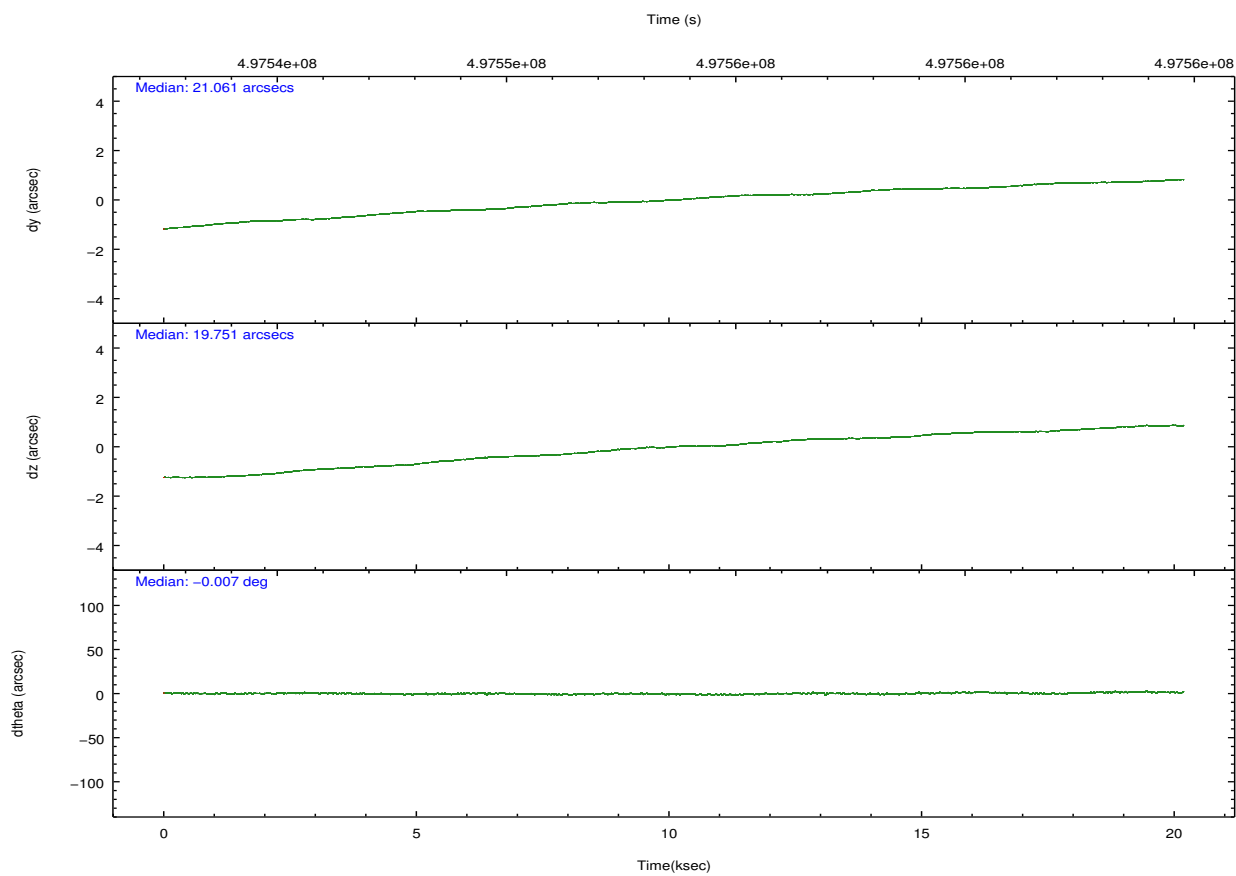
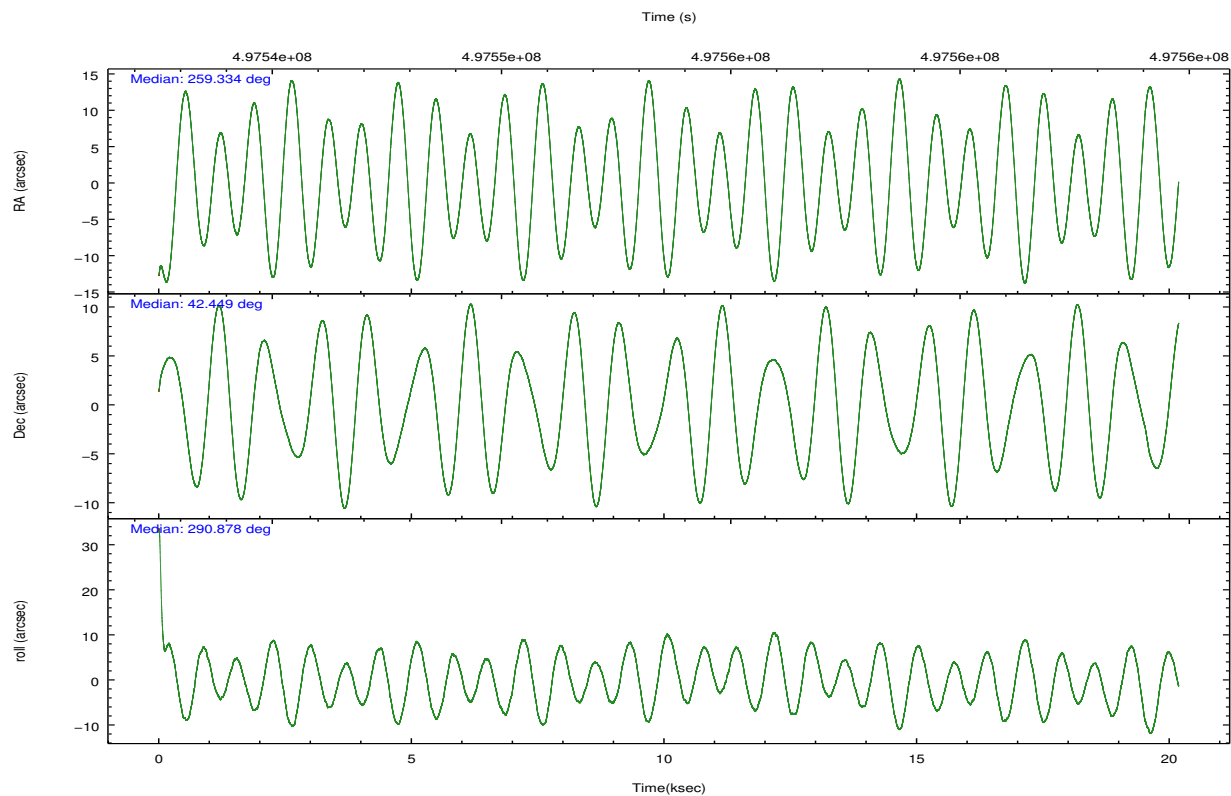
	ccd 7
grade 0 events	3031
	11%
grade 1 events	30
	0%
grade 2 events	3660
	14%
grade 3 events	2063
	8%
grade 4 events	1961
	7%
grade 5 events	1904
	7%
grade 6 events	5457
	21%
grade 7 events	7345
	28%

2.2 Compared Parameters

Parameter	Planned	Actual	Parameter	Planned	Actual
Instrument	ACIS	ACIS	Obspar format version number	7	7
Detector	ACIS-7	ACIS-7	Obspar file type	PREDICTED	ACTUAL
Grating	NONE	NONE	Obspar update status	NONE	UPDATED
Data mode	FAINT	FAINT	Number of optional ACIS chips dropped	0	0
Observation mode	POINTING	POINTING	On-chip summing requested	N	N
[deg] Pointing RA	259.304525	259.3335520279622	Subarray requested	CUSTOM	1/8
[deg] Pointing Dec	42.465621	42.44867377501109	Subarray start row	449	449
[deg] Pointing Roll	290.751761	290.888801977908	Subarray row count	128	128
[mm] SIM focus pos	-0.684267	-0.6828225247311905	Alternating exposures requested	N	N
[mm] SIM defocus	0	0.001444936568705701	[s] Primary exposure time	0.000000	0.4
[mm] SIM translation stage pos	-190.132523	-190.1400660498719			
[mm] SIM translation stage offset	0	0.00754346686406393			
[s] Observation start time (MET)	497543741.184000	497542842.80208			
Observation start date	2013-10-07T14:34:34	2013-10-07T14:20:42			
[s] Observation end time (MET)	497563741.184000	497564874.66579			
Observation end date	2013-10-07T20:07:54	2013-10-07T20:27:54			
Read mode	TIMED	TIMED			

2.3 Aspect



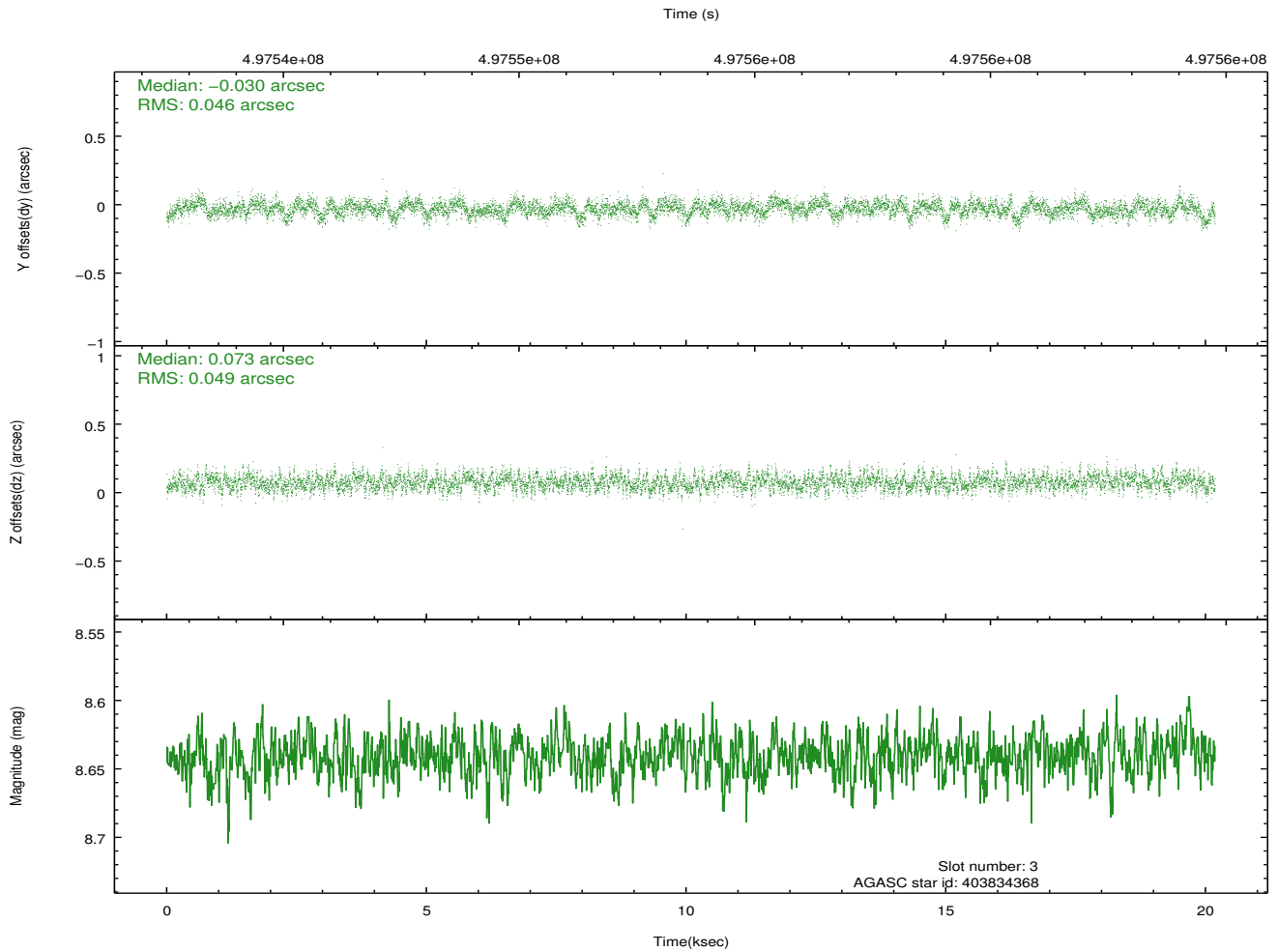
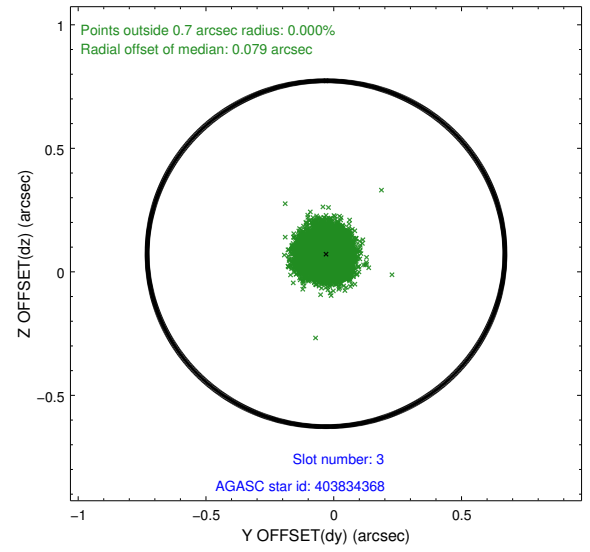
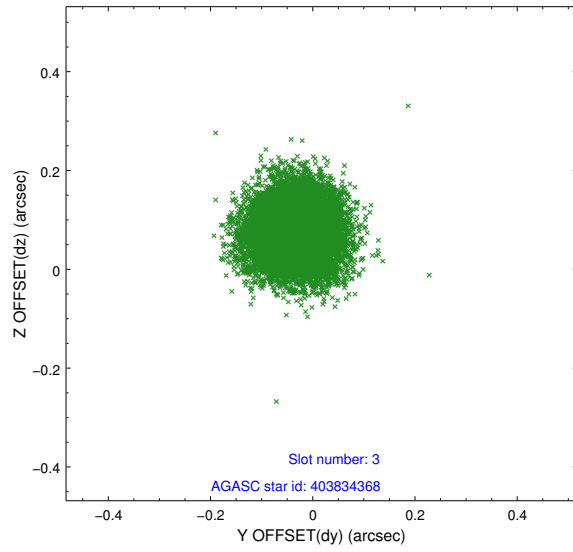


Slot Statistics

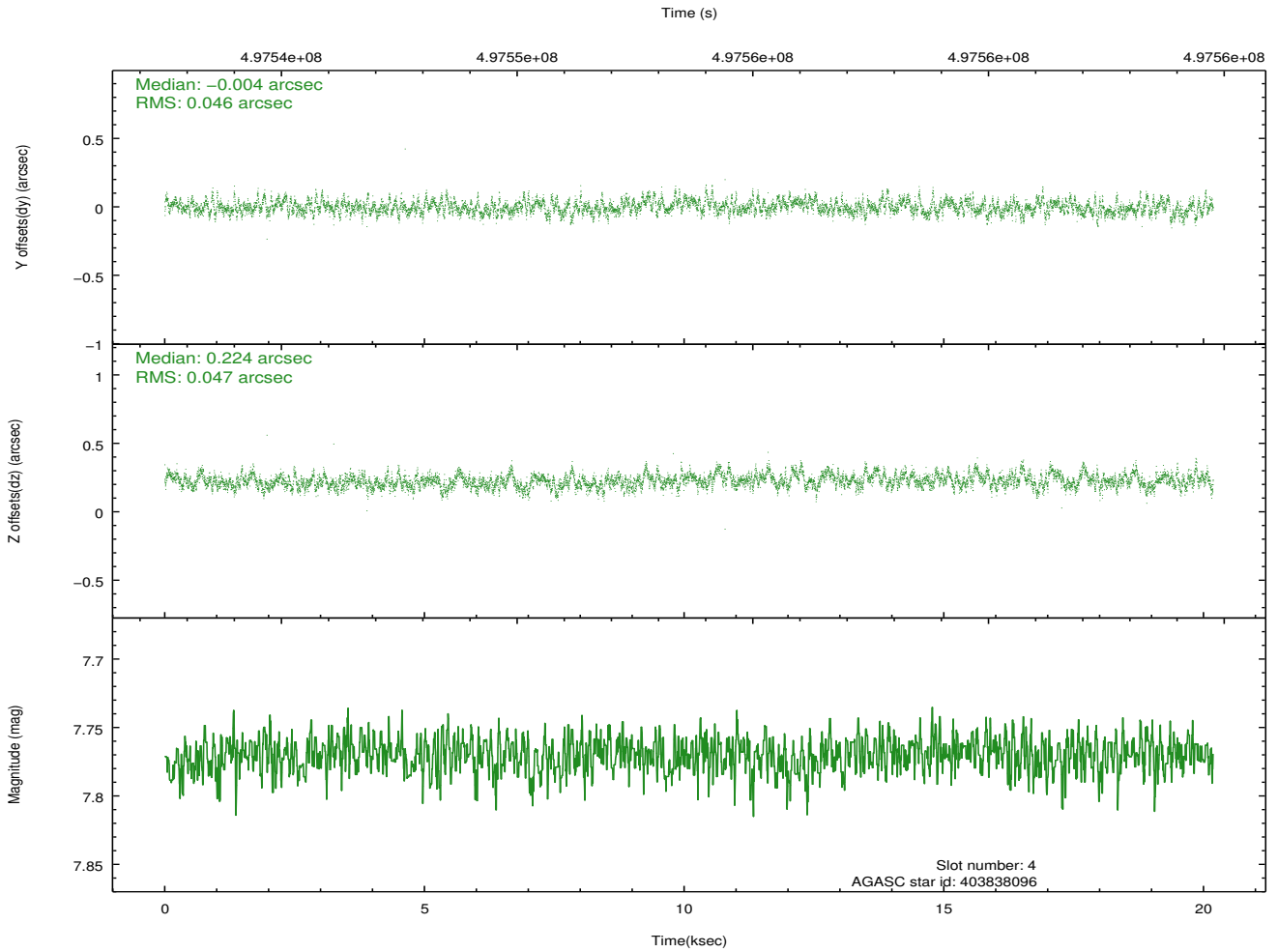
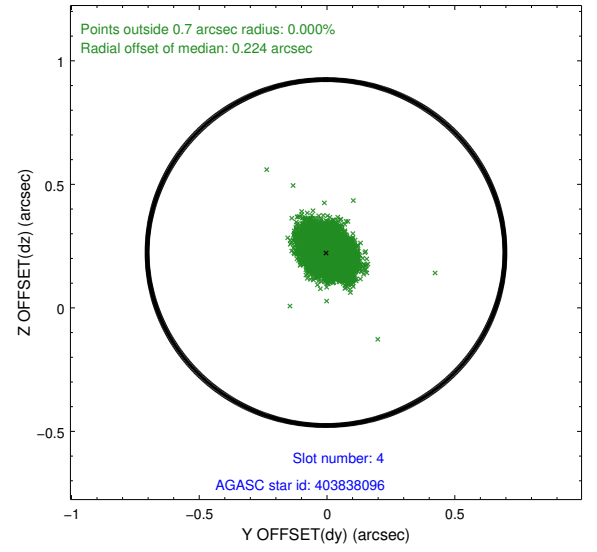
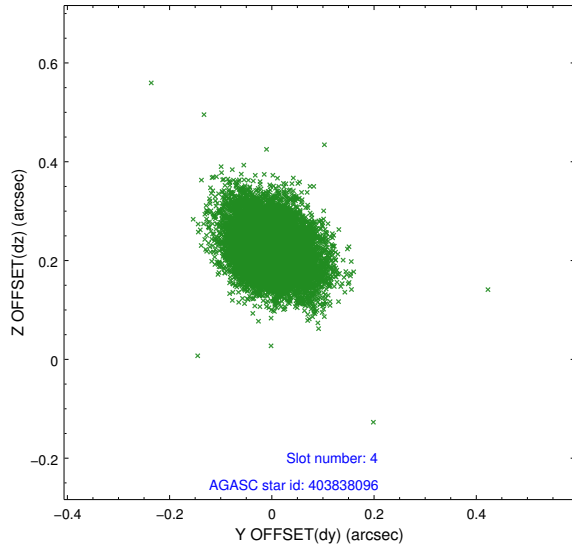
slot	status	used	id	mag	n_pts	med_dy	med_dz	dr1	dr2	ra	dec	mean_y	mean_z
0	FID		ACIS-S-1	7.04	4924	0.159	-0.031	0.020	0.045	0.000000	0.000000	922.08	-1736.80
1	FID		ACIS-S-2	6.96	4923	-0.119	0.009	0.032	0.046	0.000000	0.000000	-774.00	-1741.54
2	FID		ACIS-S-5	7.07	4923	-0.063	0.040	0.022	0.034	0.000000	0.000000	-1827.42	160.59
3	GUIDE	used	403834368	8.64	9841	-0.030	0.073	0.072	0.115	259.778485	42.643335	-156.77	1401.69
4	GUIDE	used	403838096	7.77	9844	-0.004	0.224	0.069	0.116	258.683558	42.203574	291.65	-1880.19
5	GUIDE	used	403843208	8.42	9843	0.154	-0.264	0.090	0.148	259.651860	41.888083	2272.85	134.52
6	GUIDE	used	403840632	6.71	9847	0.042	0.130	0.061	0.112	258.957257	41.649146	2416.56	-1913.75
7	GUIDE	used	405537632	7.57	9846	-0.169	-0.167	0.074	0.119	260.372612	42.269289	1652.43	2416.66

2.4 Star Slots

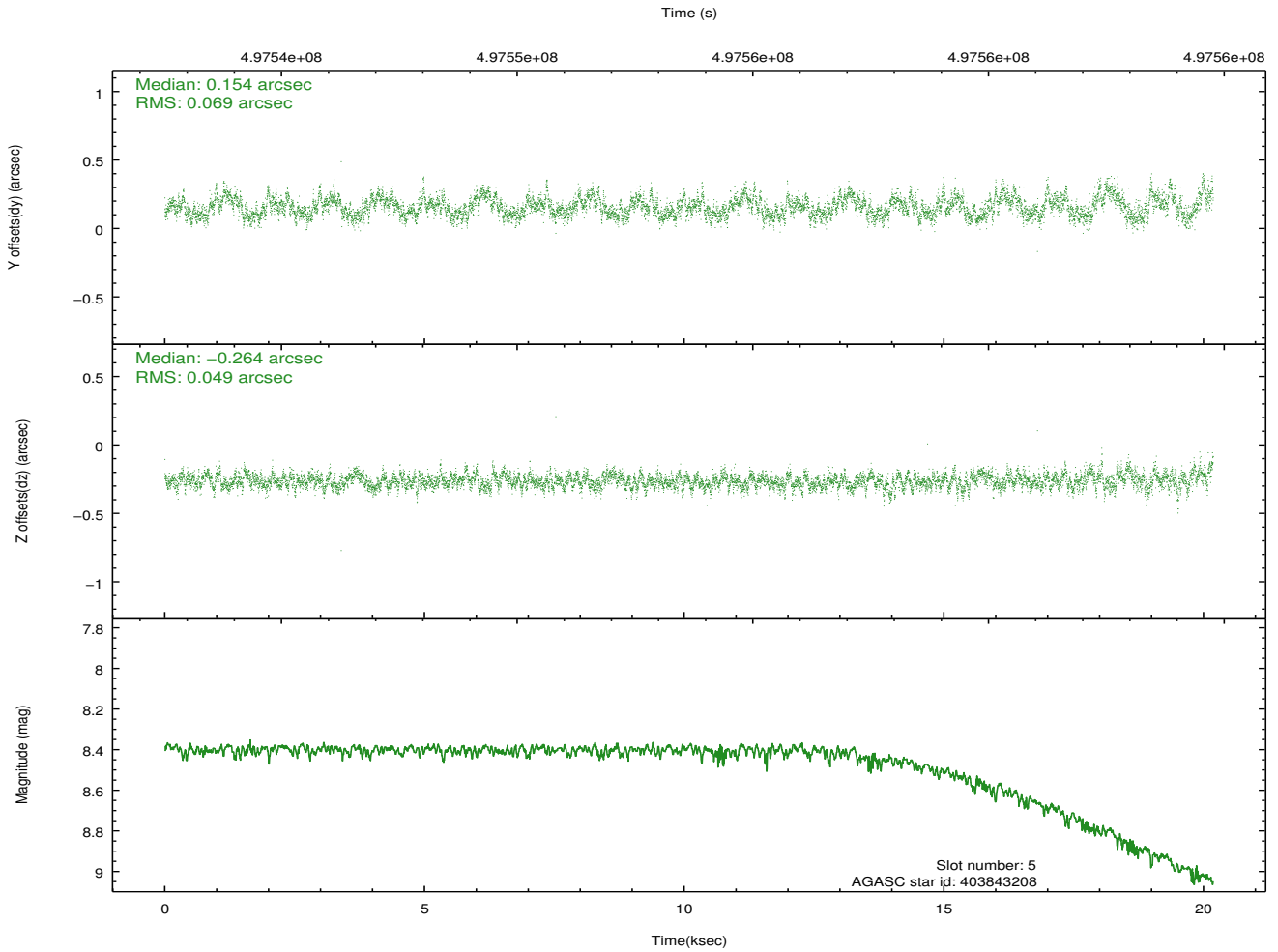
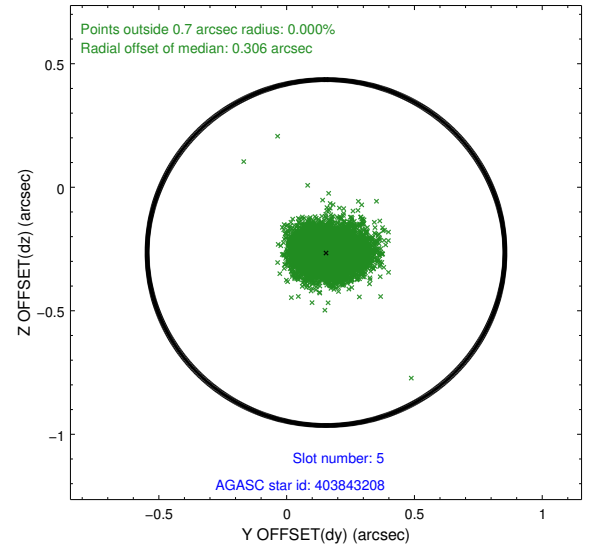
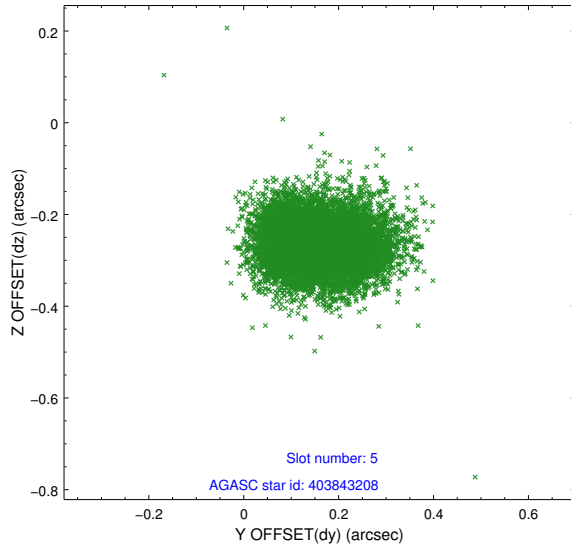
2.4.1 Slot 3



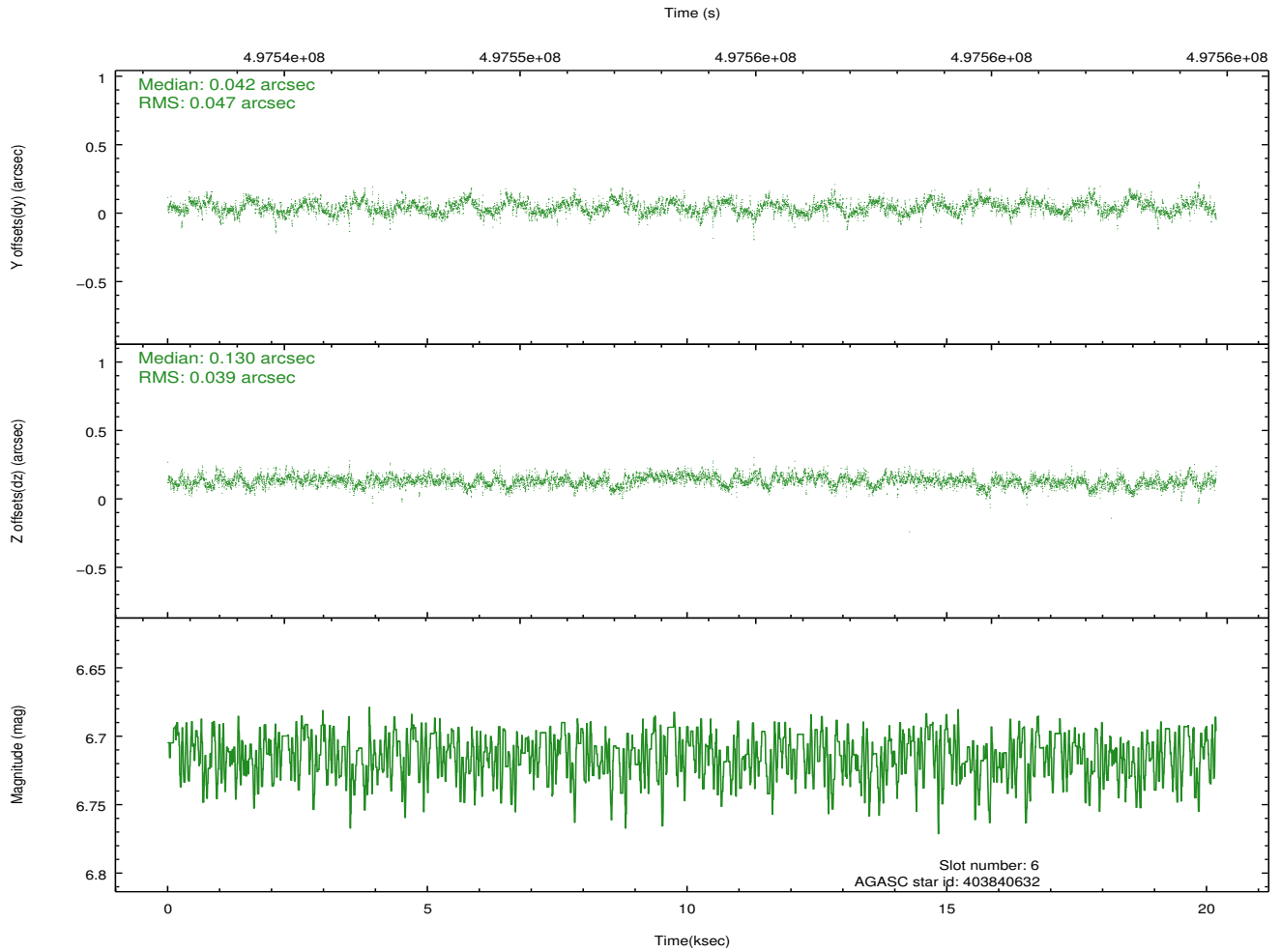
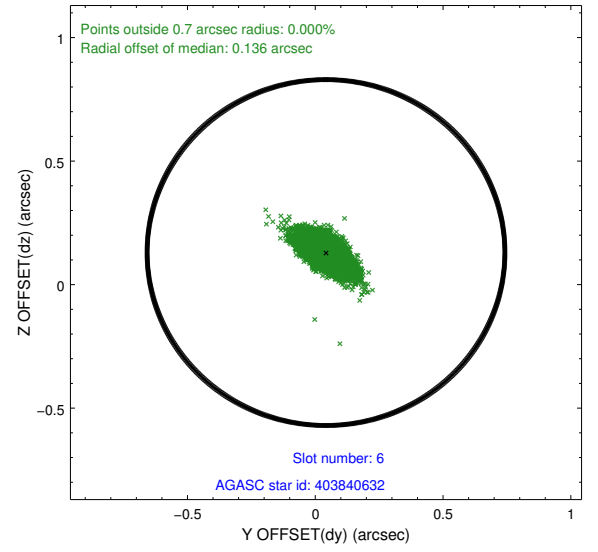
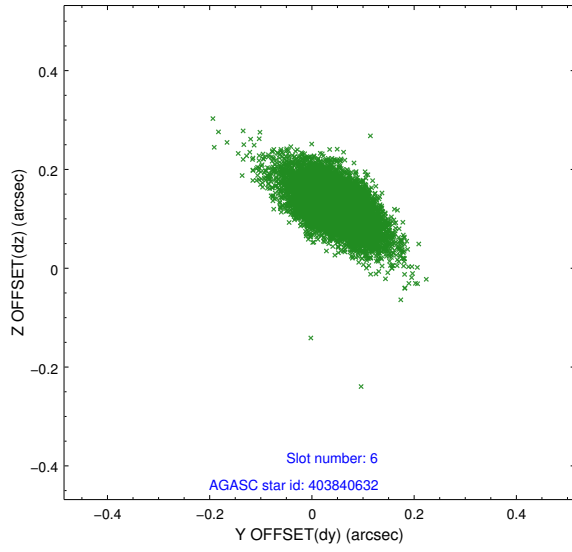
2.4.2 Slot 4



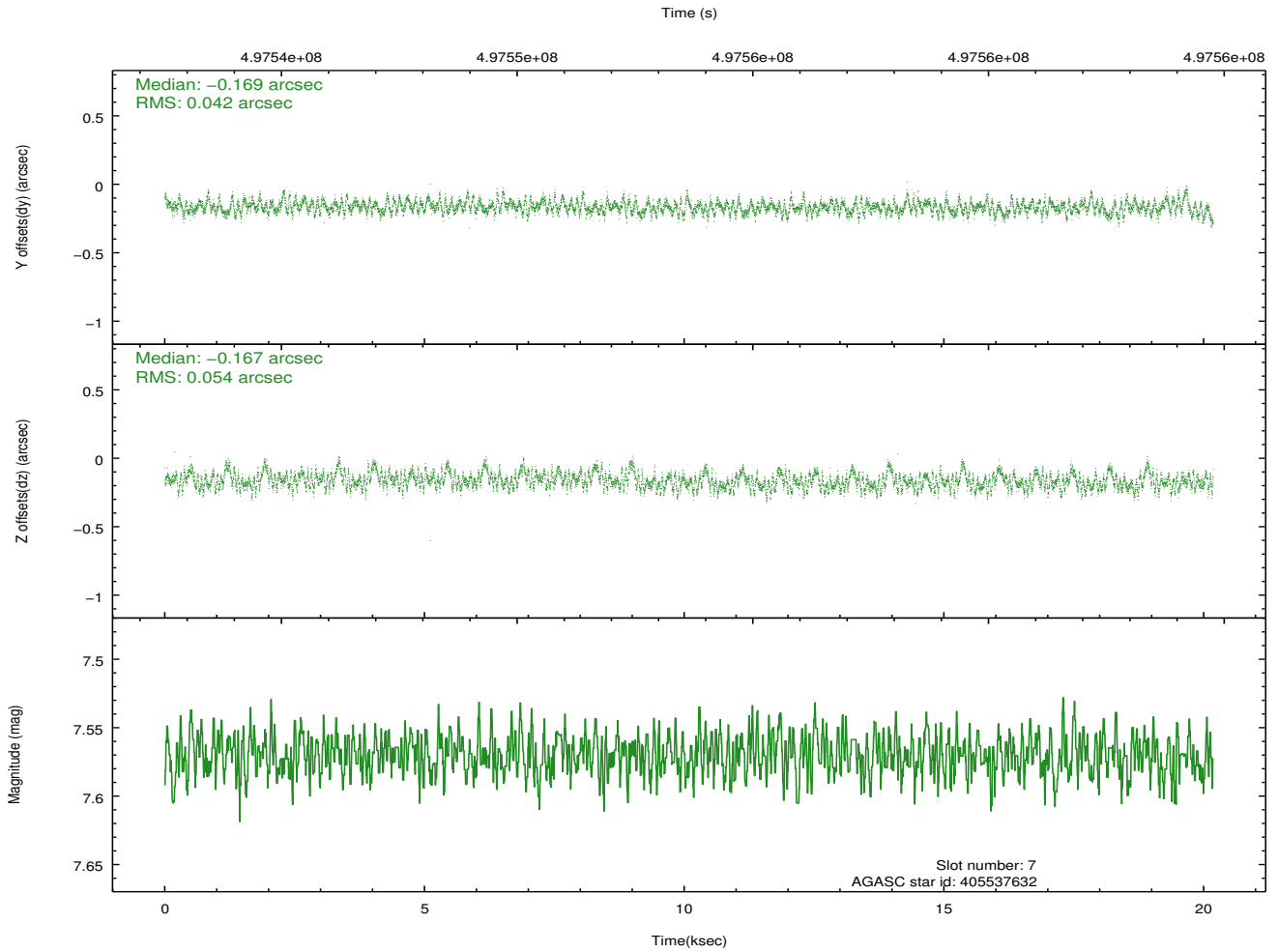
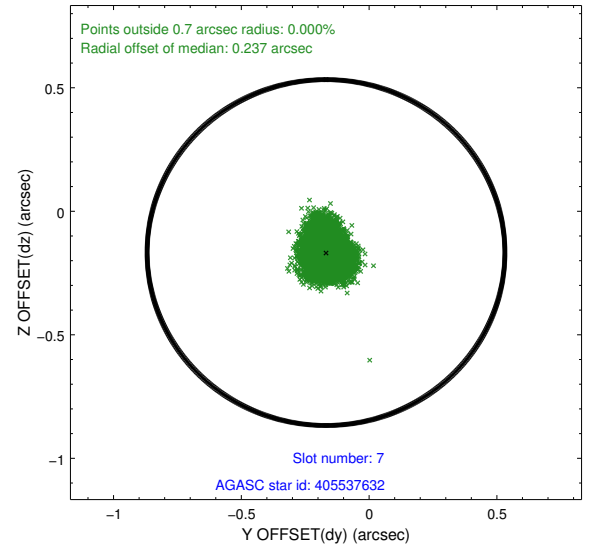
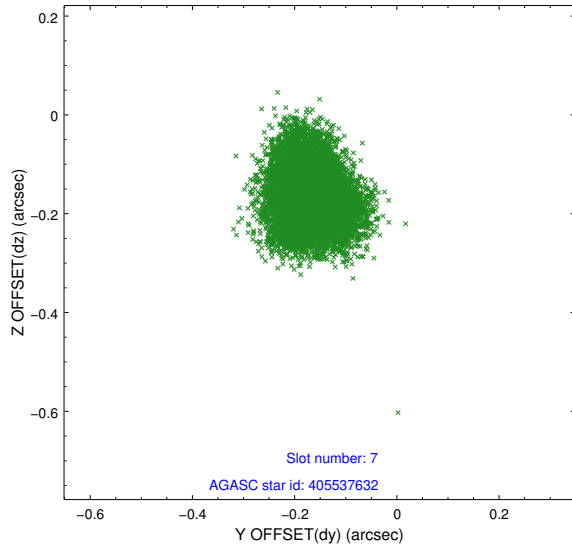
2.4.3 Slot 5



2.4.4 Slot 6

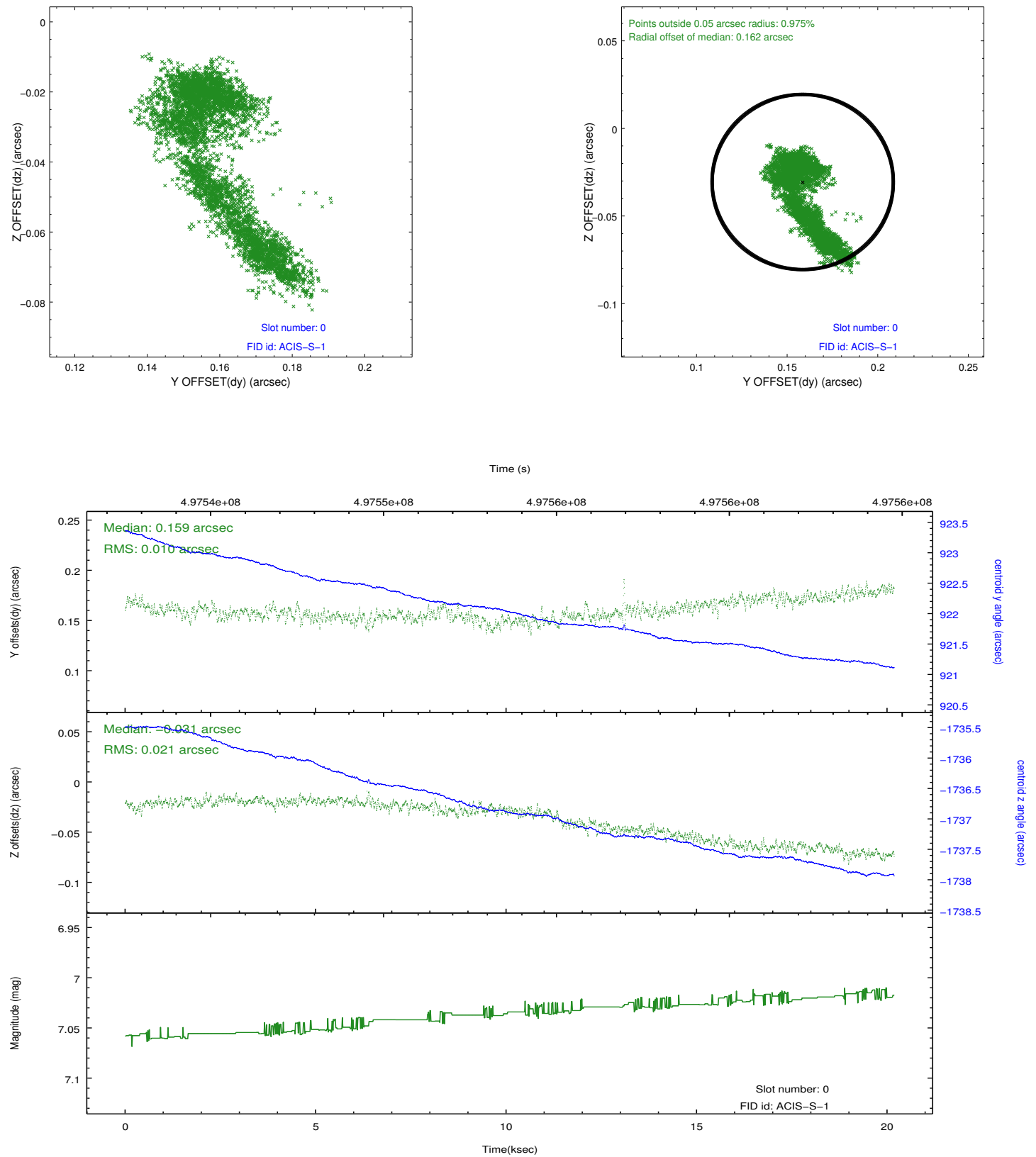


2.4.5 Slot 7

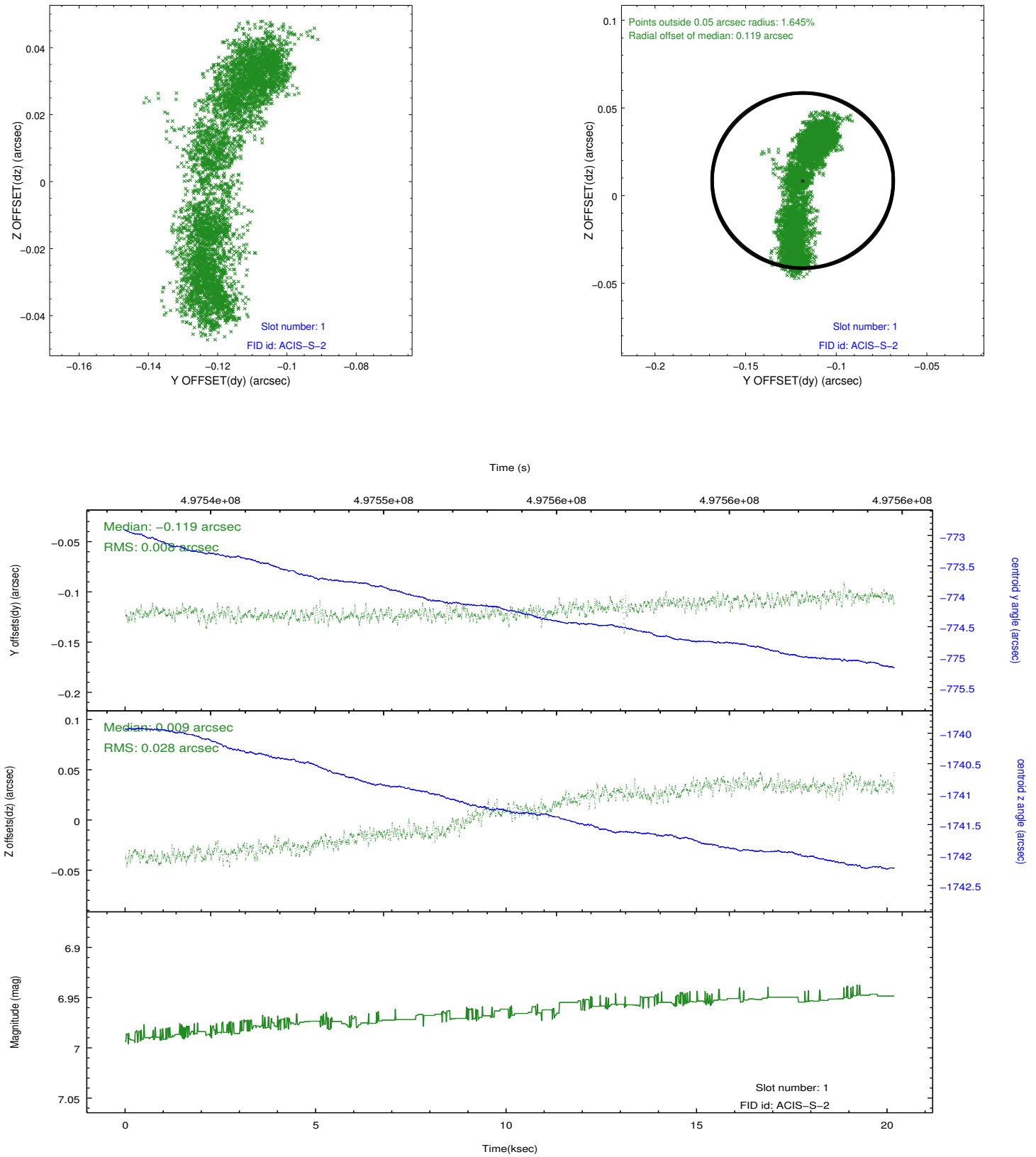


2.5 FID Slots

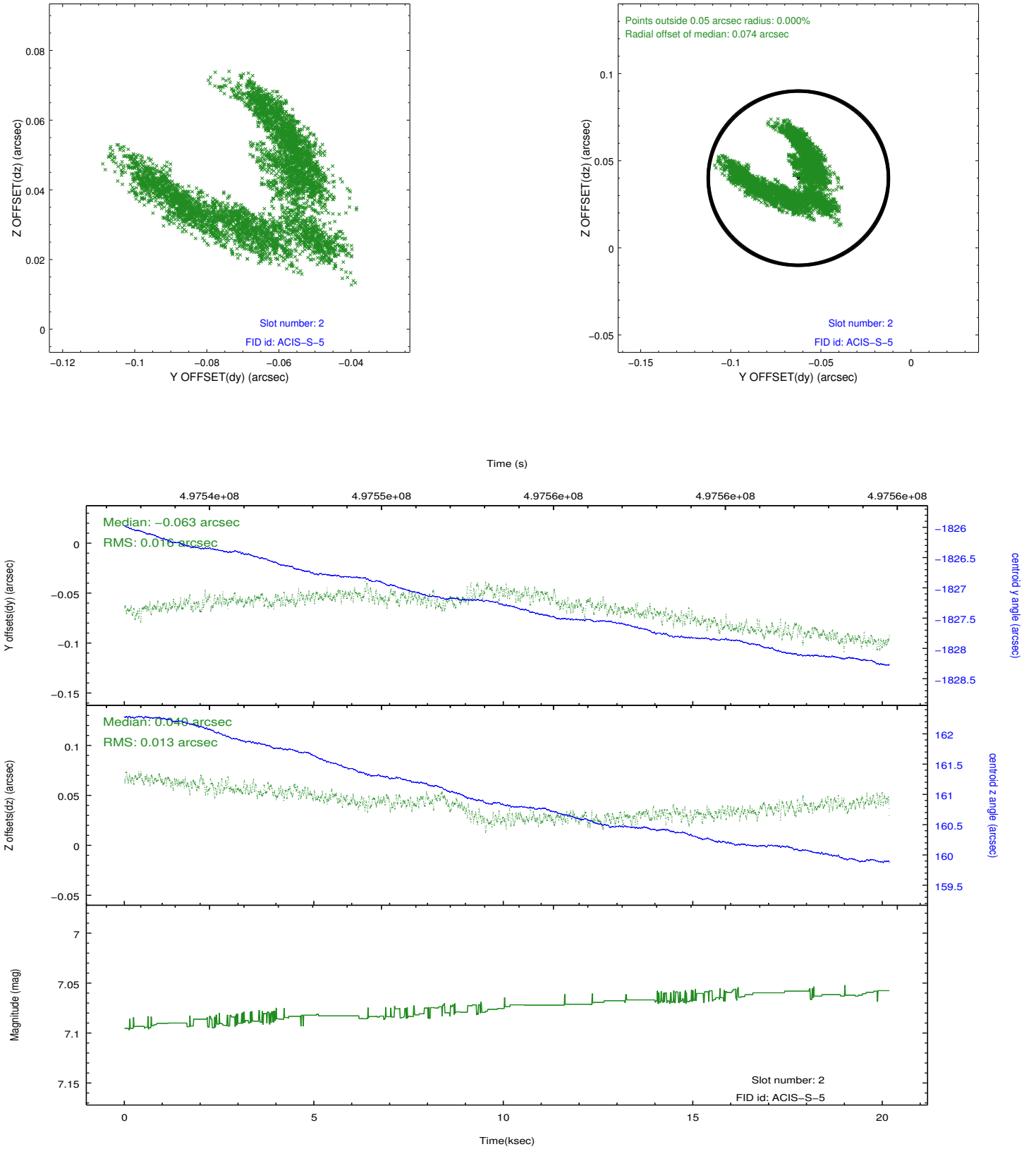
2.5.1 Slot 0



2.5.2 Slot 1



2.5.3 Slot 2



A Summary

A.1 Status

V&V Scientist	Beth Sundheim
V&V Date (YYYY-MM-DD)	2014.12.11
V&V Edition	1
V&V Disposition and Status	OK
V&V Charge Time	20.069428857505

A.2 Comments

These data have been reprocessed with new aspect alignment calibration files that correct small mean offsets (up to 0.4 arcsecs) and improve overall astrometric accuracy. The new calibration was determined using data from the time period being reprocessed and was performed using cross-correlation of X-ray sources with radio and optical counterparts.