

V&V Reference Report

L2 ASCDS Version : 8.5.1.1

Observation 14966 - L2 Version 3
Chandra X-Ray Center

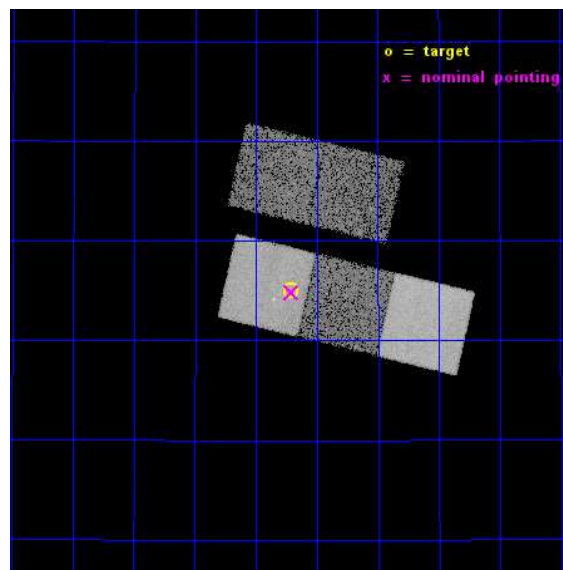
L2 Processing Date : Dec 1 2014

Contents

1	Front	2
2	OBI	3
2.1	OBI	3
2.1.1	Images	3
2.1.2	Bias	3
2.1.3	Parameters	4
2.1.4	Events	4
2.2	Compared Parameters	5
2.3	Aspect	6
2.4	Star Slots	9
2.4.1	Slot 3	9
2.4.2	Slot 4	10
2.4.3	Slot 6	11
2.4.4	Slot 7	12
2.5	FID Slots	13
2.5.1	Slot 0	13
2.5.2	Slot 1	14
2.5.3	Slot 2	15
A	Summary	16
A.1	Status	16
A.2	Comments	16

1 Front

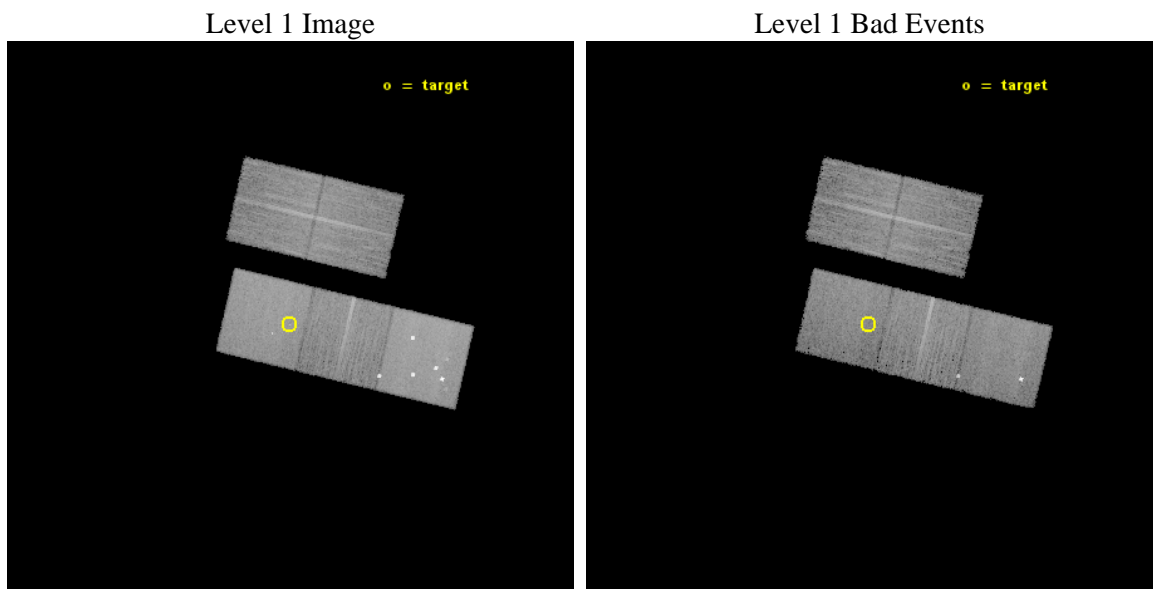
seq_num	702775	Sequence number
obs_id	14966	Observation id
title	X-ray Confirmation of Optically Selected Kpc-Scale Binary AGNs	Pro
observer	Dr. Xin Liu	Principal investigator
object	SDSSJ1058+3144	Source name
dtcycle	0	
cycle	P	events from which exps? Prim/Second/Both
ra_targ	164.6775	Observer's specified target RA [deg]
dec_targ	31.749944	Observer's specified target Dec [deg]
ra_nom	164.67729412202	Nominal RA [deg]
dec_nom	31.747267642676	Nominal Dec [deg]
roll_nom	193.15675775549	Nominal Roll [deg]
revision	3	Processing version of data
ontime	15062.294483423	Sum of GTIs [s]
livetime	14865.494517297	Livetime [s]
ontime2	15062.13032341	Sum of GTIs [s]
ontime3	15062.171363413	Sum of GTIs [s]
ontime5	15062.25344342	Sum of GTIs [s]
ontime6	15062.212403417	Sum of GTIs [s]
ontime7	15062.294483423	Sum of GTIs [s]
l2events	134231	Number of level 2 events



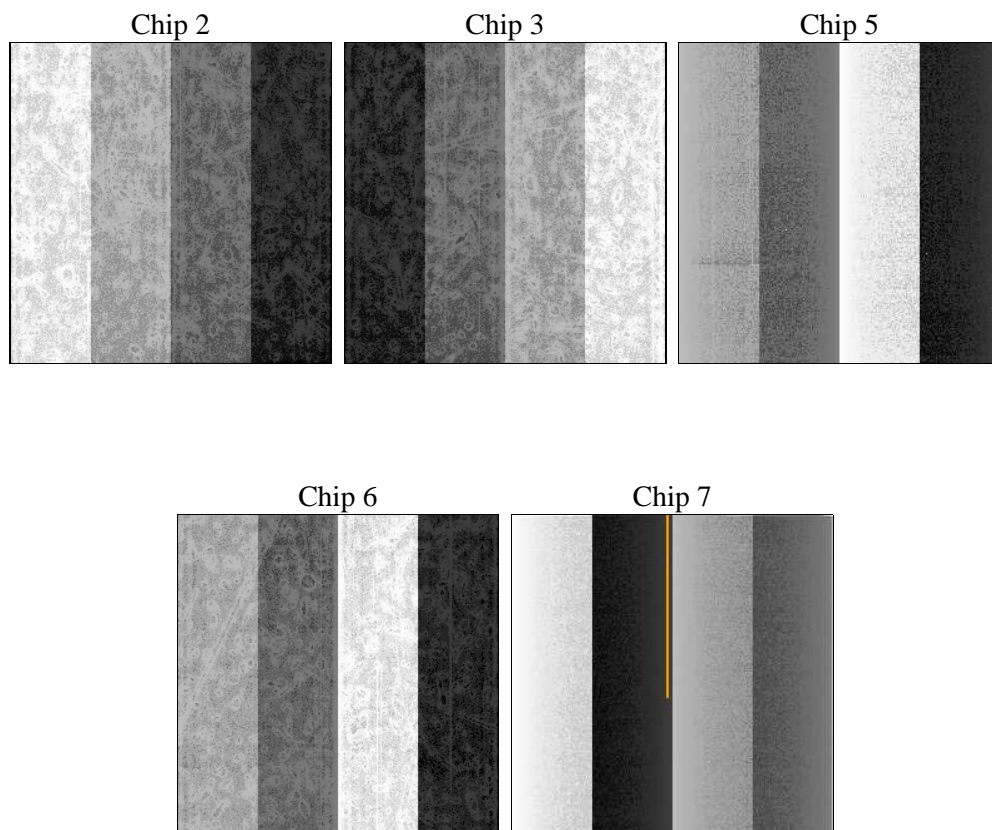
2 OBI

2.1 OBI

2.1.1 Images



2.1.2 Bias



2.1.3 Parameters

obi_num	1	Obi number	sched_exp_time	15000.000000	[s] Scheduled observation exposure time
ascdsver	10.3	Processing system revision	ontime	15062.294483423	Sum of GTIs [s]
caldsver	4.6.4	 	ontime2	15062.13032341	Sum of GTIs [s]
date	2014-12-01T20:09:10	Date and time of file creation	ontime3	15062.171363413	Sum of GTIs [s]
revision	3	Processing version of data	ontime5	15062.25344342	Sum of GTIs [s]
			ontime6	15062.212403417	Sum of GTIs [s]
			ontime7	15062.294483423	Sum of GTIs [s]
			l1events	523907	Number of level 1 events

2.1.4 Events

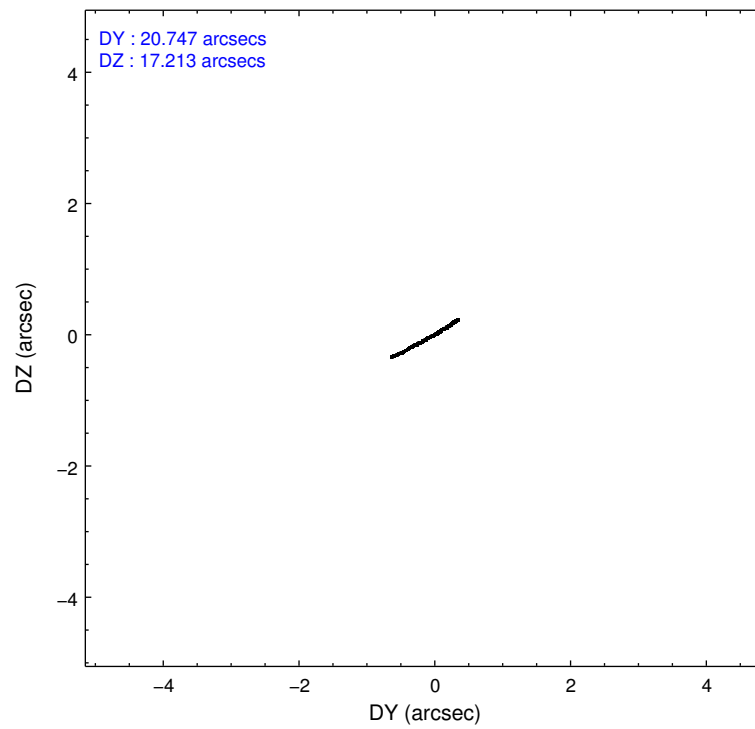
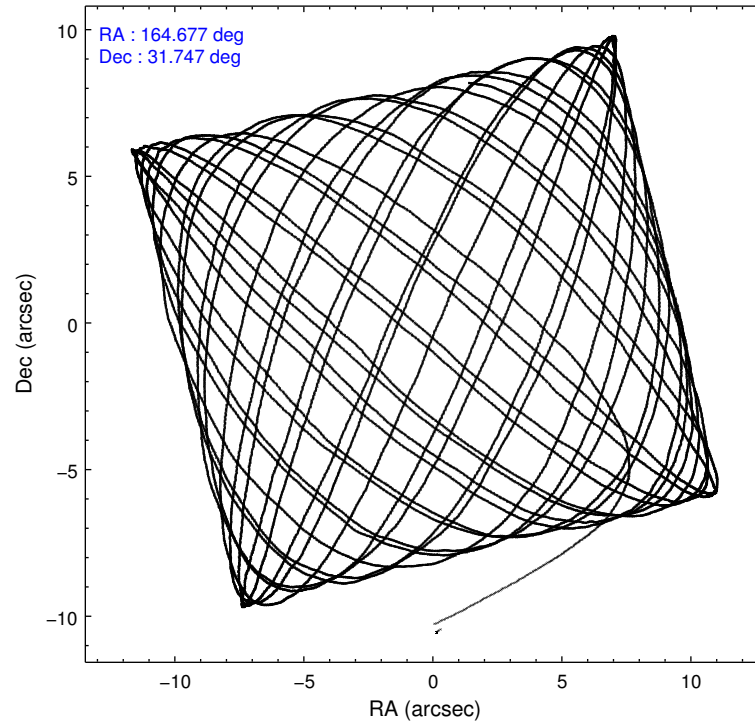
	ccd 2	ccd 3	ccd 5	ccd 6	ccd 7
level 1 events	82771	82478	157848	87105	113705
rejected events	73663	73417	77344	77099	64398
rejected %	88%	89%	48%	88%	56%

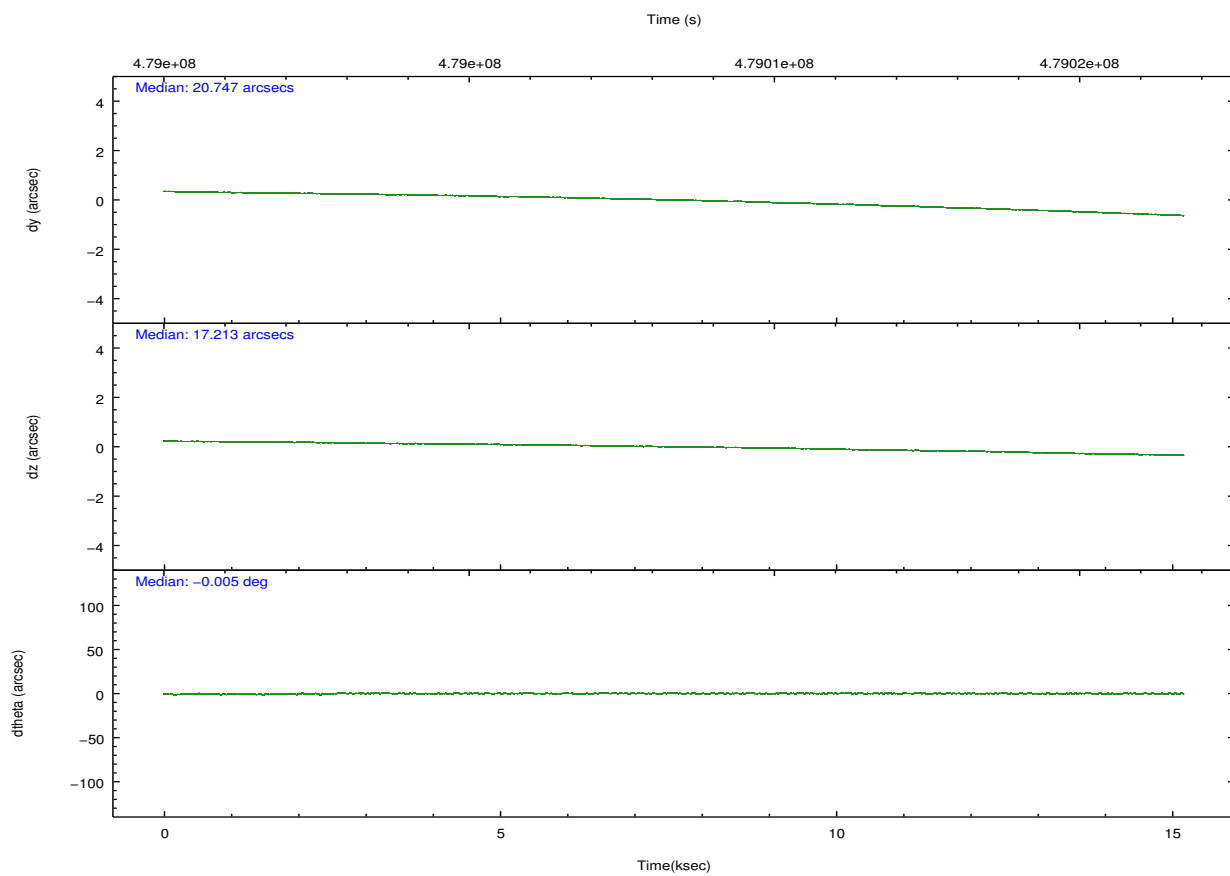
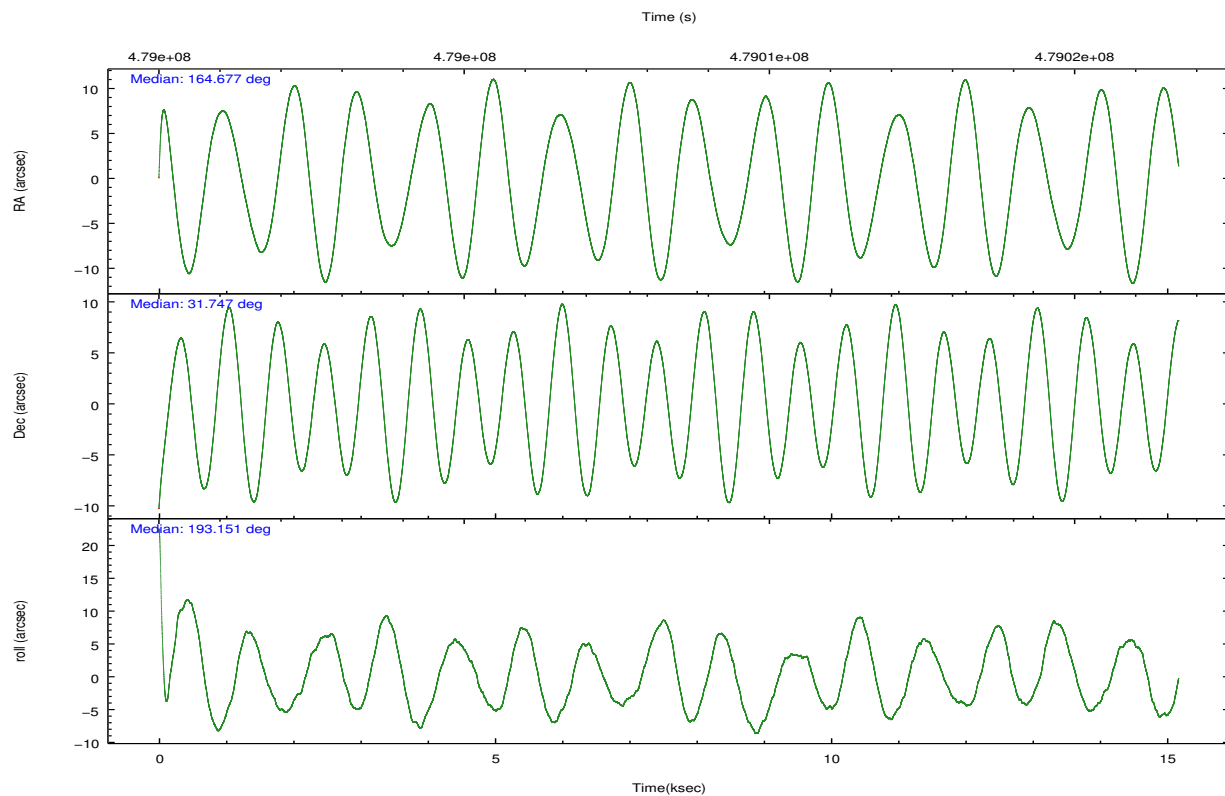
	ccd 2	ccd 3	ccd 5	ccd 6	ccd 7
grade 0 events	3160	3078	17548	3351	4268
	3%	3%	11%	3%	3%
grade 1 events	44	39	577	37	125
	0%	0%	0%	0%	0%
grade 2 events	2167	1960	21037	2290	10296
	2%	2%	13%	2%	9%
grade 3 events	975	1015	2378	984	4071
	1%	1%	1%	1%	3%
grade 4 events	986	1019	2245	987	3918
	1%	1%	1%	1%	3%
grade 5 events	3461	4278	10630	4241	11428
	4%	5%	6%	4%	10%
grade 6 events	1825	1995	37345	2397	26778
	2%	2%	23%	2%	23%
grade 7 events	70153	69094	66088	72818	52821
	84%	83%	41%	83%	46%

2.2 Compared Parameters

Parameter	Planned	Actual	Parameter	Planned	Actual
Instrument	ACIS	ACIS	Obspar format version number	7	7
Detector	ACIS-23567	ACIS-23567	Obspar file type	PREDICTED	ACTUAL
Grating	NONE	NONE	Obspar update status	NONE	UPDATED
Data mode	FAINT	FAINT	CCD I0 on	N	N
Observation mode	POINTING	POINTING	CCD I1 on	N	N
[deg] Pointing RA	164.700439	164.6772941220151	CCD I2 on	Y	Y
[deg] Pointing Dec	31.766255	31.74726764267586	CCD I3 on	Y	Y
[deg] Pointing Roll	192.987925	193.1567577554902	CCD S0 on	N	N
[mm] SIM focus pos	-0.684267	-0.6828225247311905	CCD S1 on	O1	Y
[mm] SIM defocus	0	0.001444936568705701	CCD S2 on	Y	Y
[mm] SIM translation stage pos	-190.132523	-190.1425803651734	CCD S3 on	Y	Y
[mm] SIM translation stage offset	0	0.01005778216563158	CCD S4 on	N	N
[s] Observation start time (MET)	479000932.184000	478999716.44439	CCD S5 on	N	N
Observation start date	2013-03-06T23:47:45	2013-03-06T23:28:36	Number of optional ACIS chips dropped	0	0
[s] Observation end time (MET)	479015932.184000	479016805.24531	On-chip summing requested	N	N
Observation end date	2013-03-07T03:57:45	2013-03-07T04:13:25	Subarray requested	NONE	NONE
Read mode	TIMED	TIMED	Alternating exposures requested	N	N
			[s] Primary exposure time	0.000000	3.1

2.3 Aspect



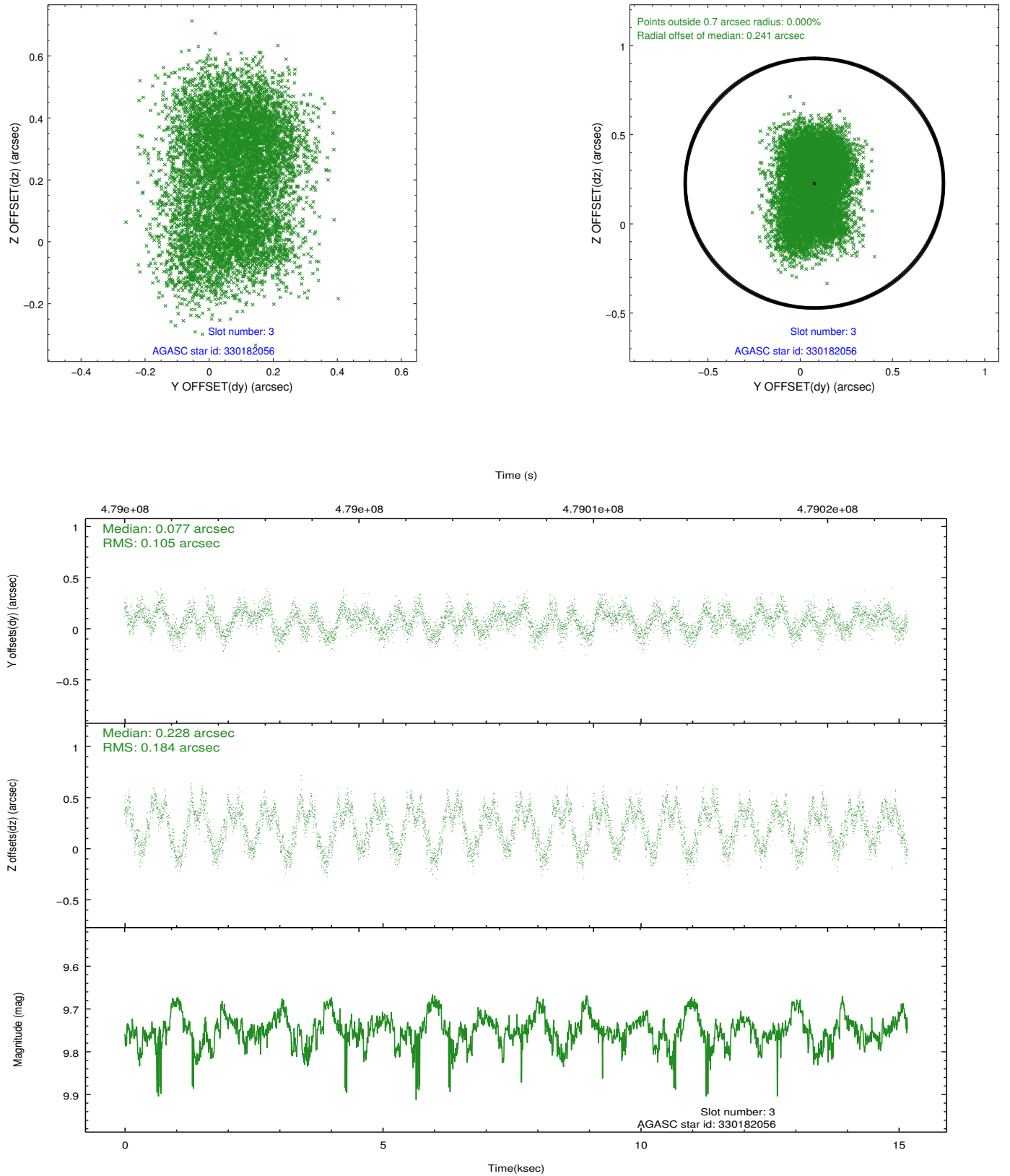


Slot Statistics

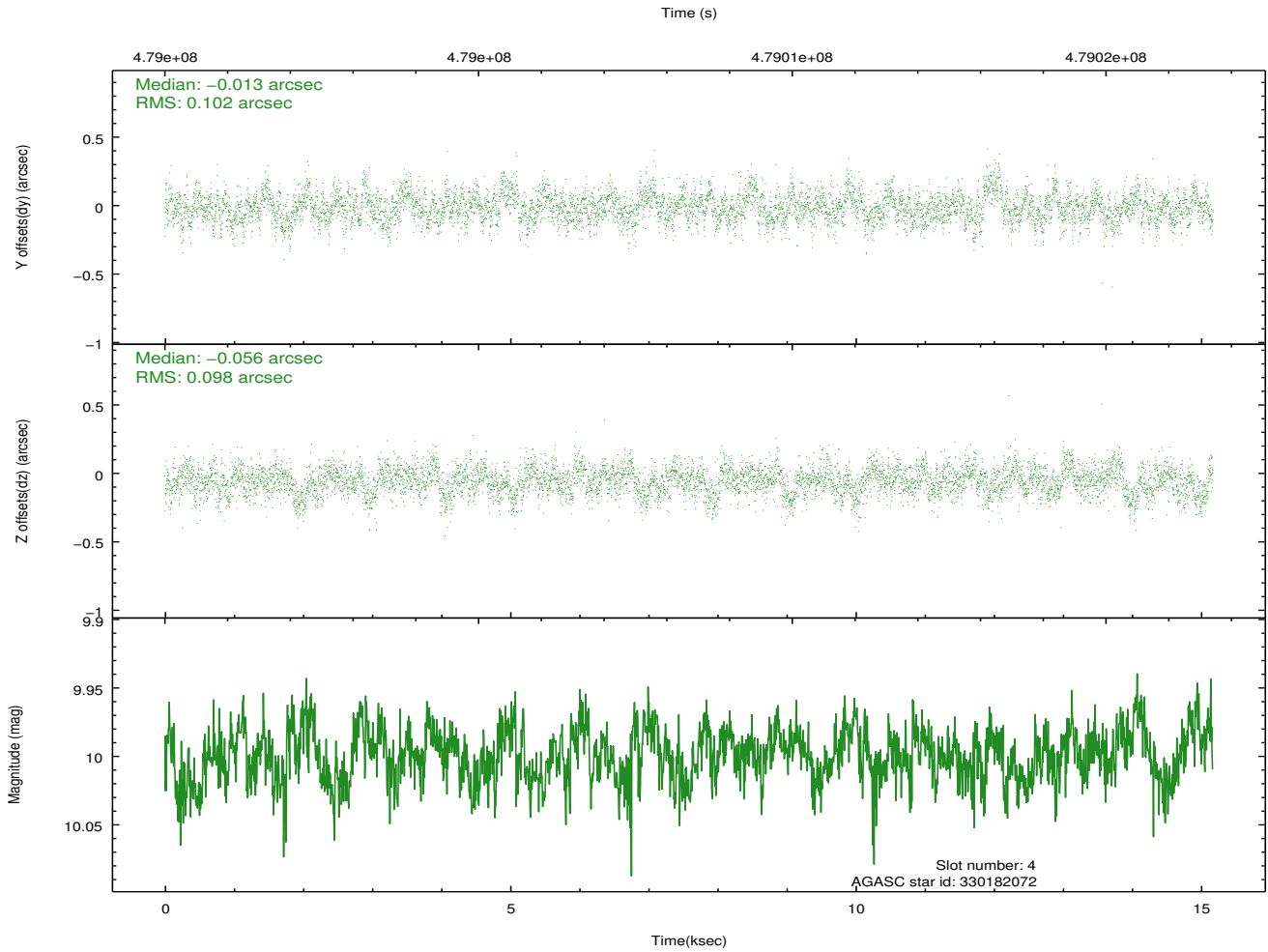
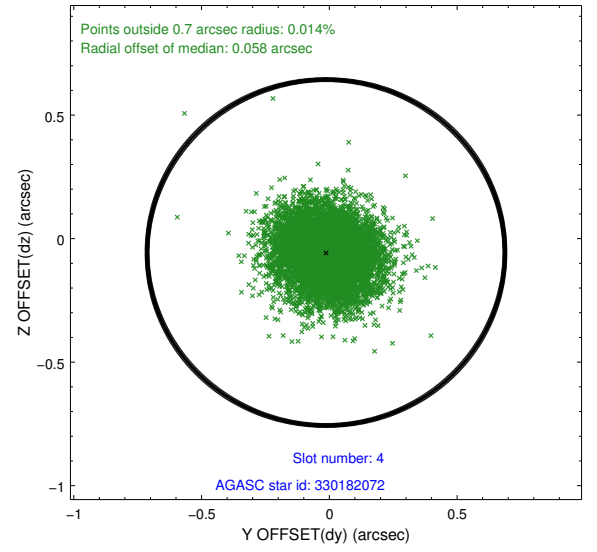
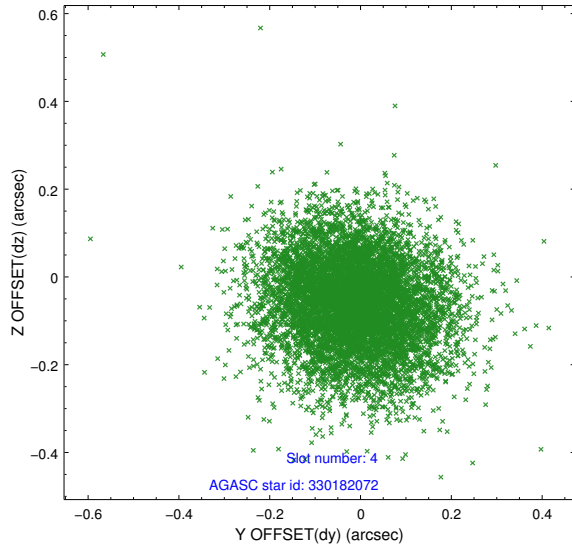
slot	status	used	id	mag	n_pts	med_dy	med_dz	dr1	dr2	ra	dec	mean_y	mean_z
0	FID		ACIS-S-1	7.14	3701	0.102	-0.099	0.010	0.025	0.000000	0.000000	922.32	-1734.30
1	FID		ACIS-S-5	7.18	3701	-0.179	0.057	0.011	0.017	0.000000	0.000000	-1826.79	163.10
2	FID		ACIS-S-6	7.27	3701	0.053	0.053	0.018	0.029	0.000000	0.000000	387.51	807.39
3	GUIDE	used	330182056	9.75	7387	0.077	0.228	0.230	0.355	164.491696	31.823028	576.63	-342.76
4	GUIDE	used	330182072	10.00	7385	-0.013	-0.056	0.149	0.246	164.160228	31.097886	2162.57	1966.65
5	OMITTED			0.00	0	0.000	0.000	0.000	0.000	0.000000	0.000000	0.00	0.00
6	GUIDE	used	330183096	8.28	7395	-0.046	-0.045	0.086	0.137	165.364067	31.246272	-1570.68	2277.90
7	GUIDE	used	330190728	10.16	7391	-0.032	-0.093	0.277	0.416	164.060145	31.568986	2071.84	245.57

2.4 Star Slots

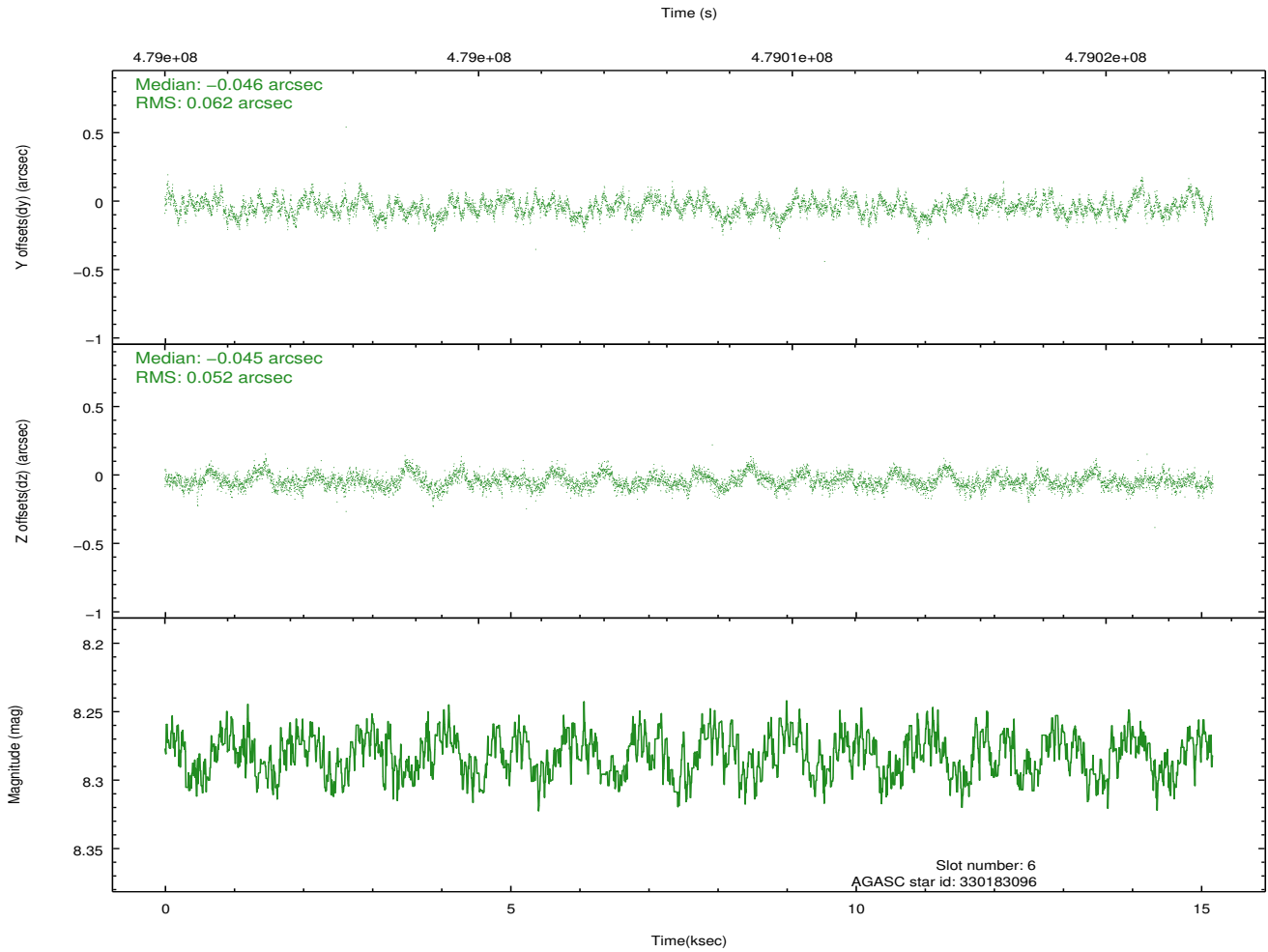
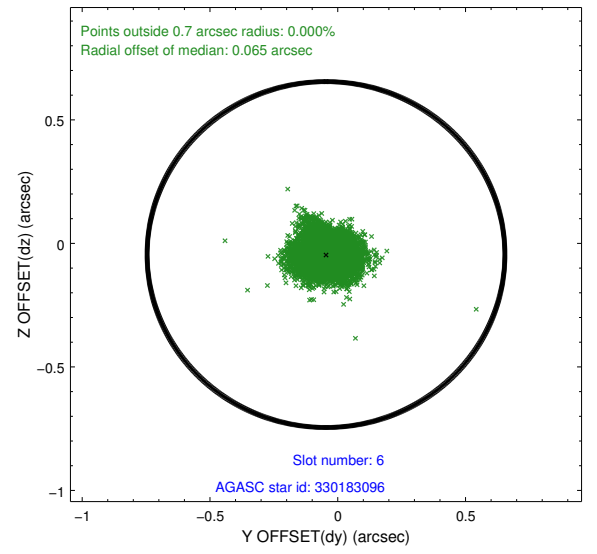
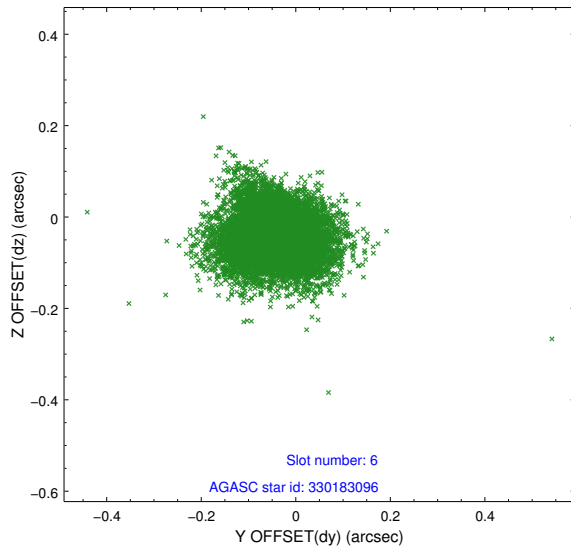
2.4.1 Slot 3



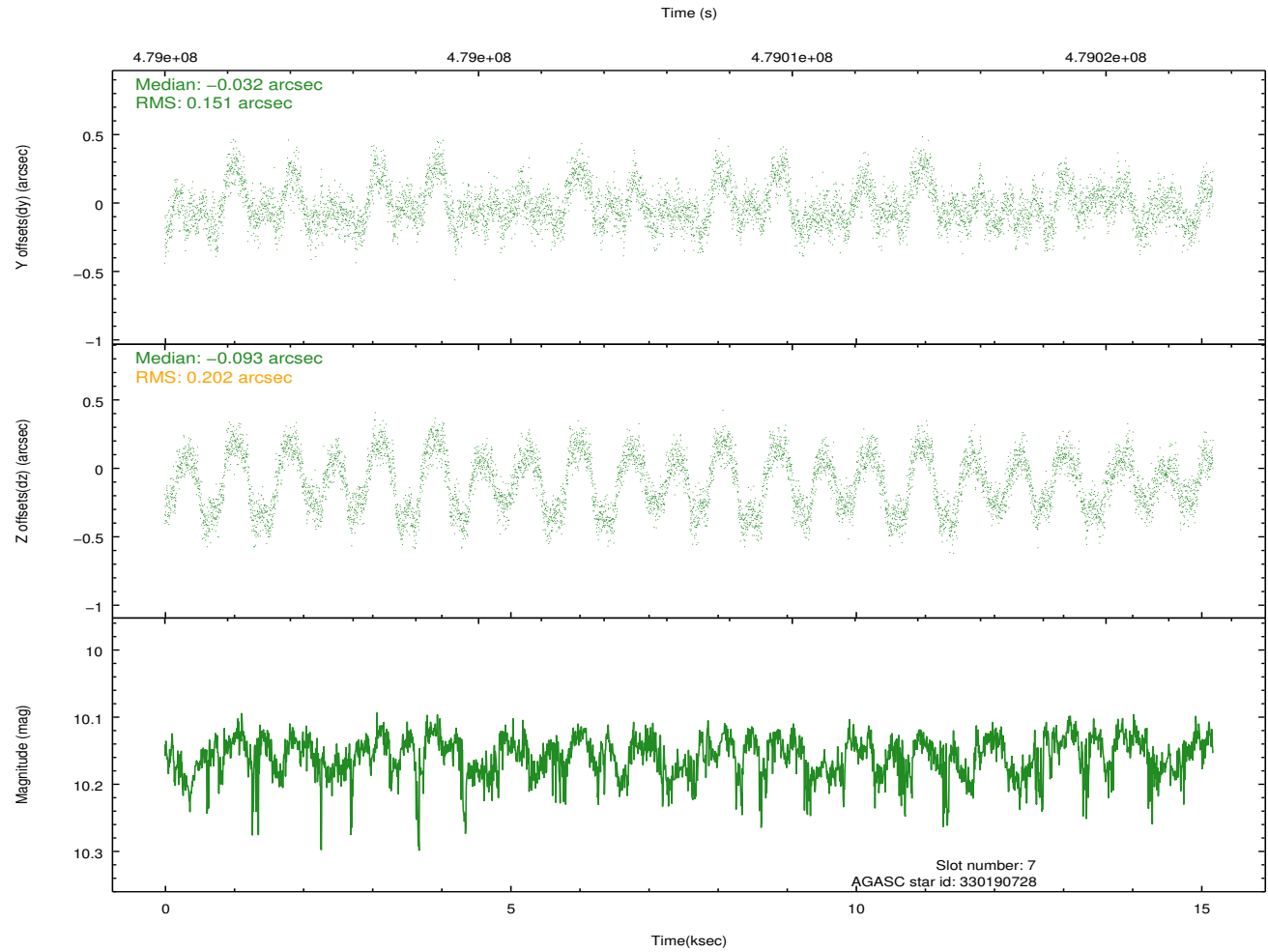
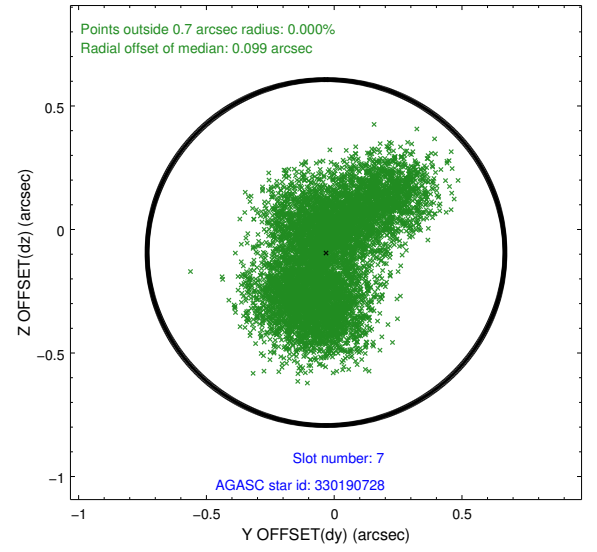
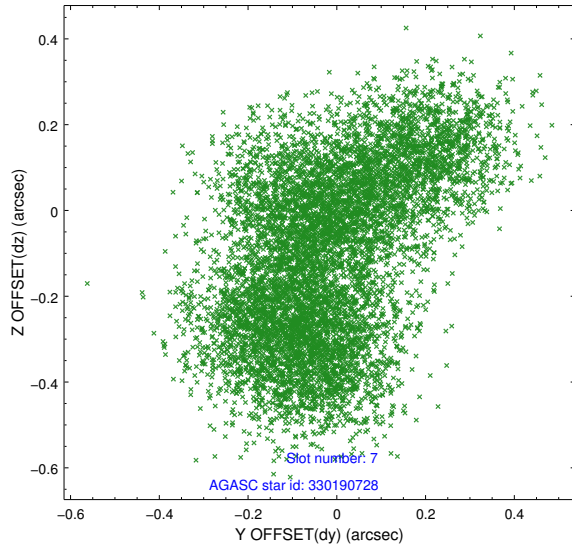
2.4.2 Slot 4



2.4.3 Slot 6

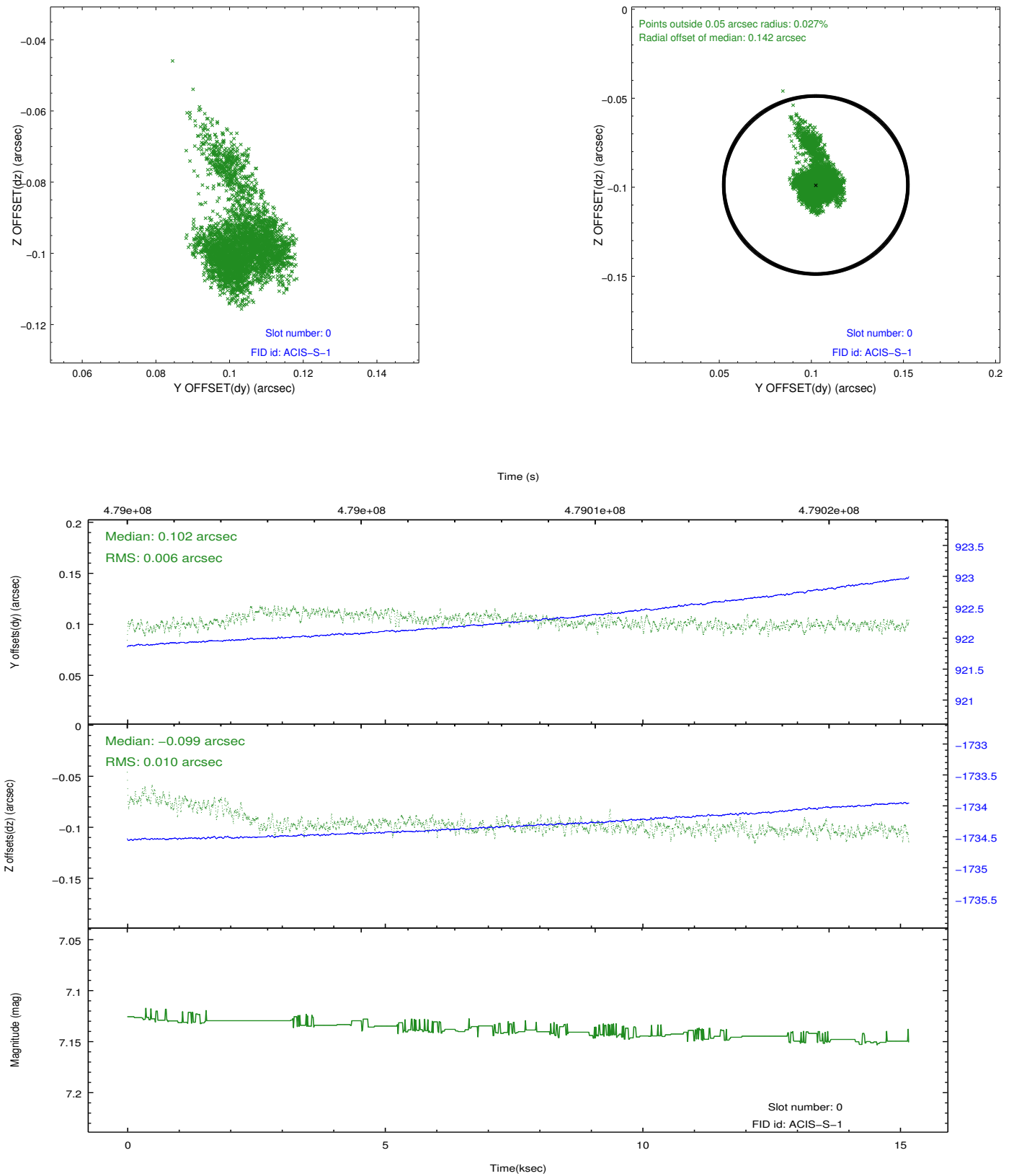


2.4.4 Slot 7

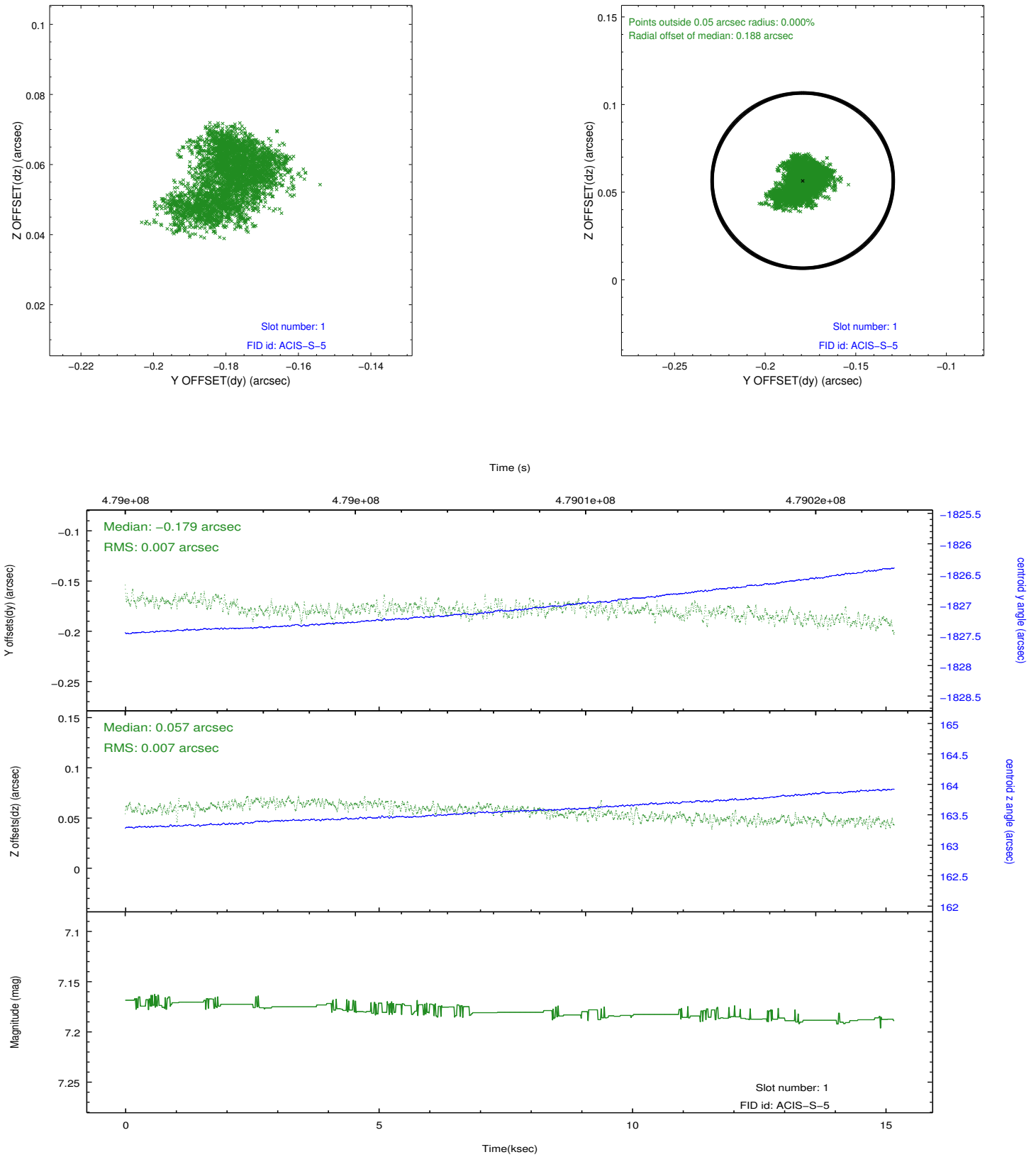


2.5 FID Slots

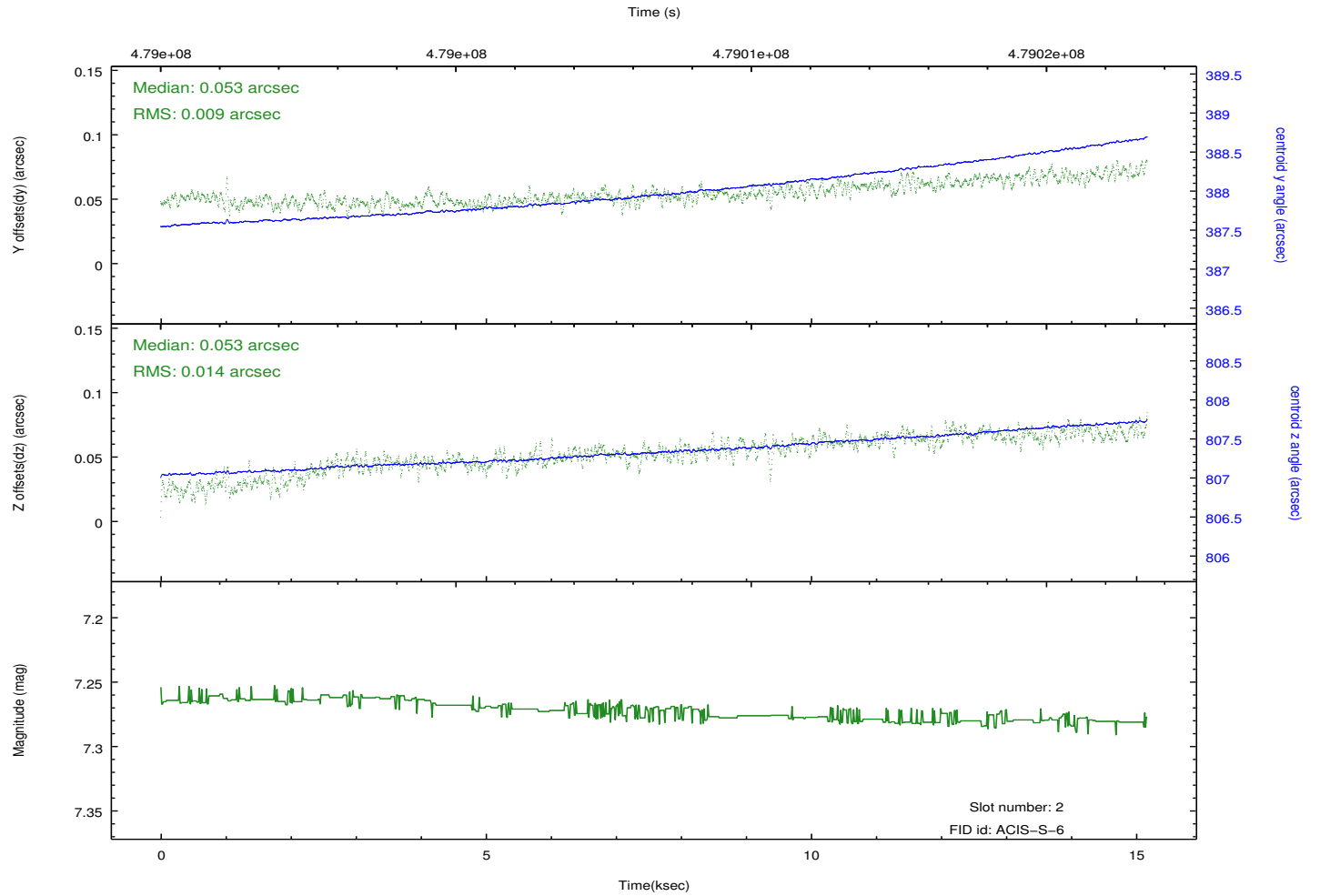
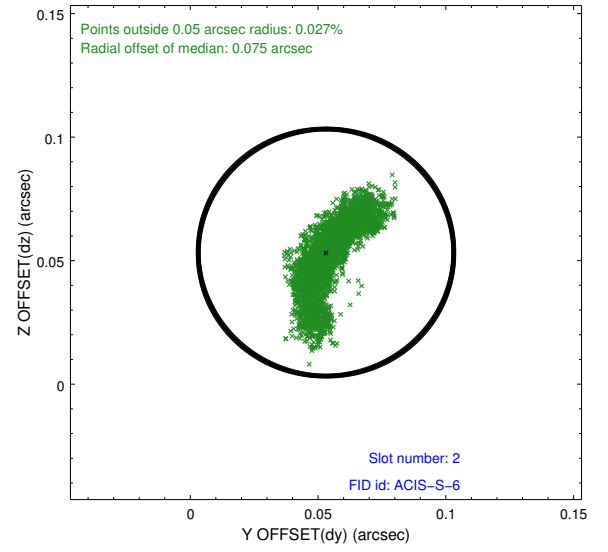
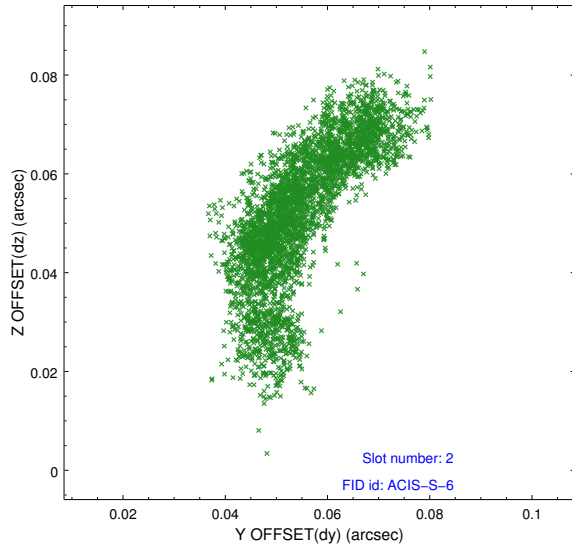
2.5.1 Slot 0



2.5.2 Slot 1



2.5.3 Slot 2



A Summary

A.1 Status

V&V Scientist	Beth Sundheim
V&V Date (YYYY-MM-DD)	2014.12.09
V&V Edition	1
V&V Disposition and Status	OK
V&V Charge Time	15.062294483423

A.2 Comments

The guide star in slot 5 was removed from the aspect solution due to poor data quality. The aspect solution is improved by the removal of this star from the solution.

These data have been reprocessed with new aspect alignment calibration files that correct small mean offsets (up to 0.4 arcsecs) and improve overall astrometric accuracy. The new calibration was determined using data from the time period being reprocessed and was performed using cross-correlation of X-ray sources with radio and optical counterparts.