

V&V Reference Report

L2 ASCDS Version : 10

Observation 14216 - L2 Version 3
Chandra X-Ray Center

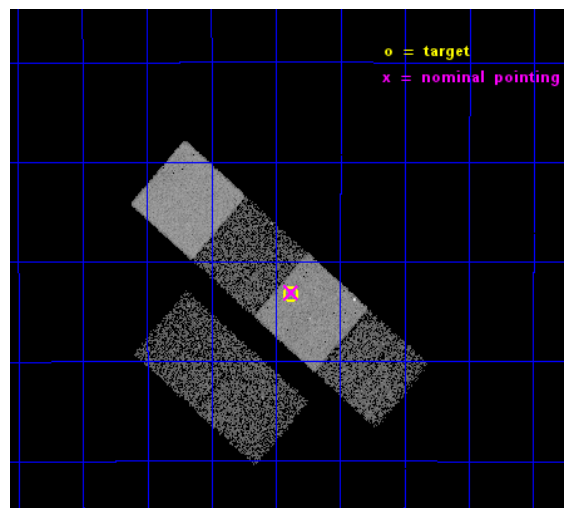
L2 Processing Date : Dec 6 2014

Contents

1	Front	2
2	OBI	3
2.1	OBI	3
2.1.1	Images	3
2.1.2	Bias	3
2.1.3	Parameters	4
2.1.4	Events	4
2.2	Compared Parameters	5
2.3	Aspect	6
2.4	Star Slots	9
2.4.1	Slot 3	9
2.4.2	Slot 4	10
2.4.3	Slot 5	11
2.4.4	Slot 6	12
2.4.5	Slot 7	13
2.5	FID Slots	14
2.5.1	Slot 0	14
2.5.2	Slot 1	15
2.5.3	Slot 2	16
A	Summary	17
A.1	Status	17
A.2	Comments	17

1 Front

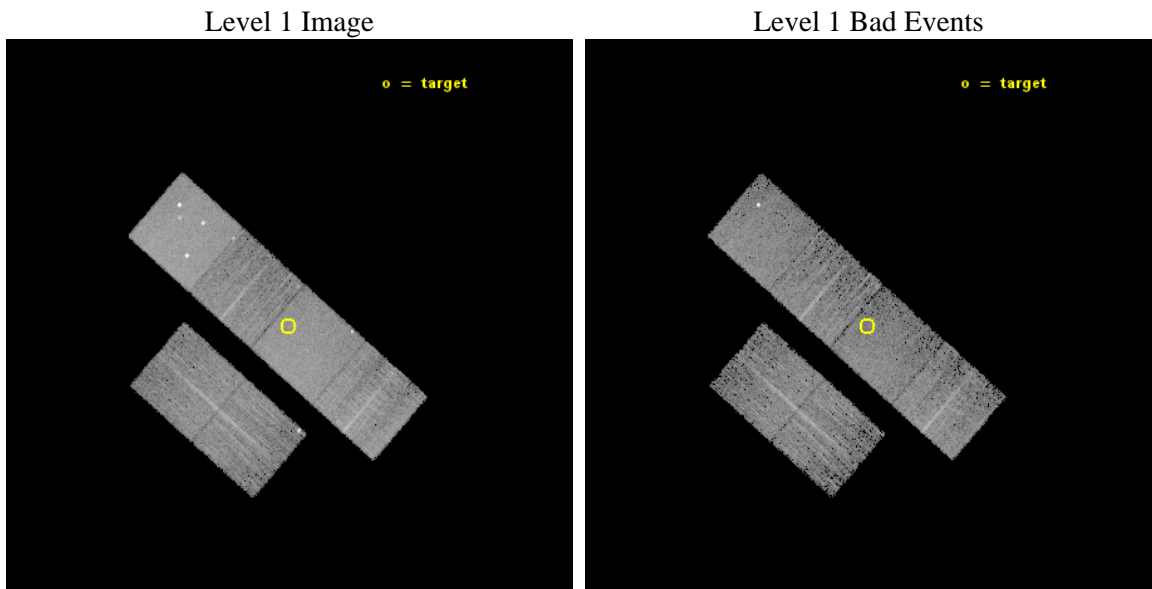
seq_num	702712	Sequence number
obs_id	14216	Observation id
title	Exploratory X-ray Monitoring of $z>4$ Radio-Quiet Quasars	Proposal t
observer	Prof. Ohad Shemmer	Principal investigator
object	Q 0000-263	Source name
dtcycle	0	
cycle	P	events from which exps? Prim/Second/Both
ra_targ	0.845417	Observer's specified target RA [deg]
dec_targ	-26.054667	Observer's specified target Dec [deg]
ra_nom	0.84482811077334	Nominal RA [deg]
dec_nom	-26.051660265779	Nominal Dec [deg]
roll_nom	41.266198834856	Nominal Roll [deg]
revision	3	Processing version of data
ontime	9967.9999629259	Sum of GTIs [s]
livetime	9841.7791453864	Livetime [s]
ontime2	9967.9999629259	Sum of GTIs [s]
ontime3	9967.9999629259	Sum of GTIs [s]
ontime5	9967.9999629259	Sum of GTIs [s]
ontime6	9967.9999629259	Sum of GTIs [s]
ontime7	9967.9999629259	Sum of GTIs [s]
ontime8	9967.9999629259	Sum of GTIs [s]
l2events	80892	Number of level 2 events



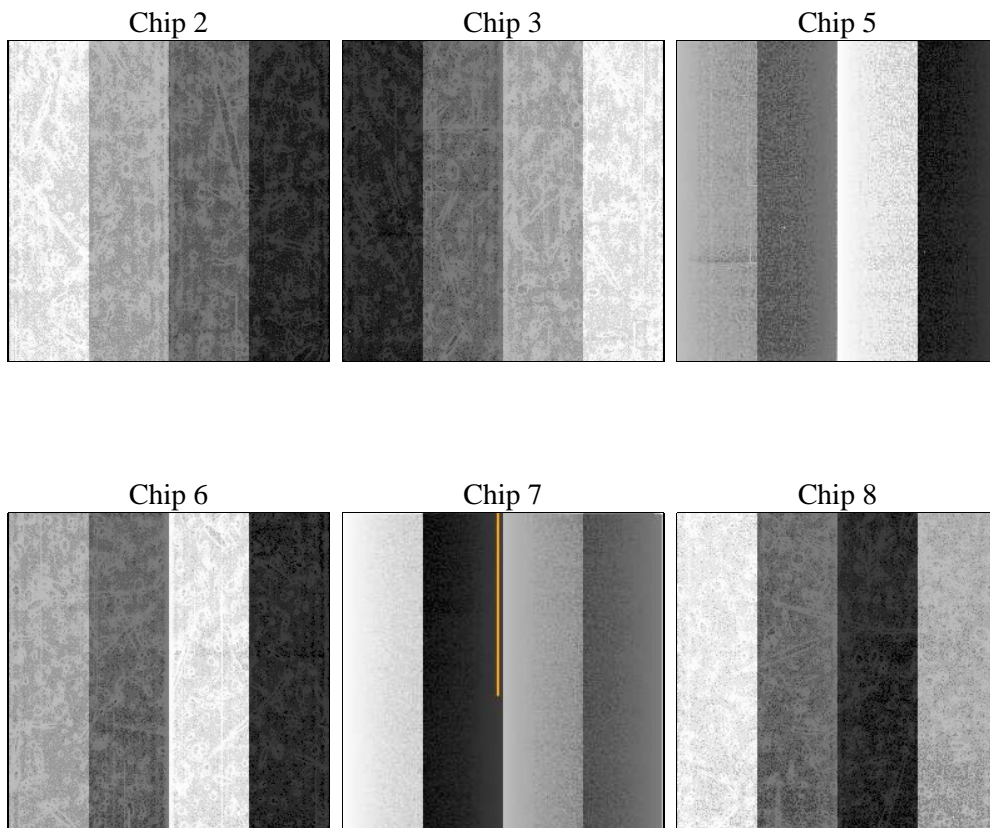
2 OBI

2.1 OBI

2.1.1 Images



2.1.2 Bias



2.1.3 Parameters

obi_num	1	Obi number	sched_exp_time	10000.000000	[s] Scheduled observation exposure time
ascdsver	10.3.1	Processing system revision	ontime	9967.9999629259	Sum of GTIs [s]
caldsver	4.6.4	 	ontime2	9967.9999629259	Sum of GTIs [s]
date	2014-12-06T09:57:10	Date and time of file creation	ontime3	9967.9999629259	Sum of GTIs [s]
revision	3	Processing version of data	ontime5	9967.9999629259	Sum of GTIs [s]
			ontime6	9967.9999629259	Sum of GTIs [s]
			ontime7	9967.9999629259	Sum of GTIs [s]
			ontime8	9967.9999629259	Sum of GTIs [s]
			l1events	339705	Number of level 1 events

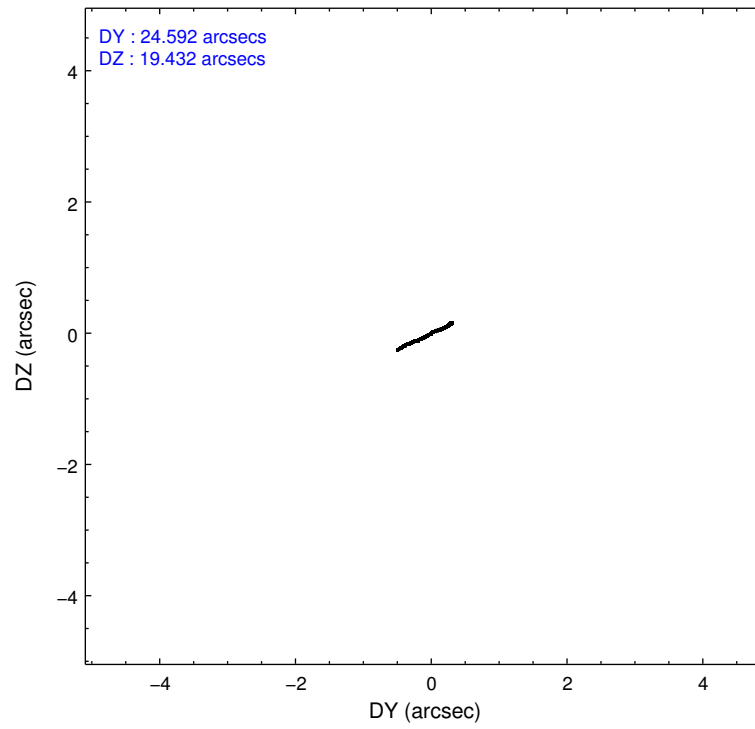
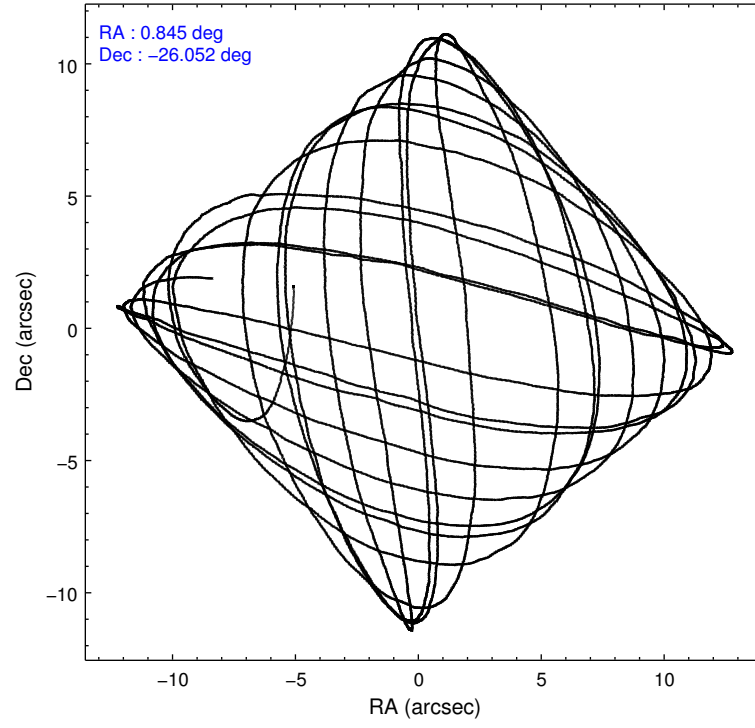
2.1.4 Events

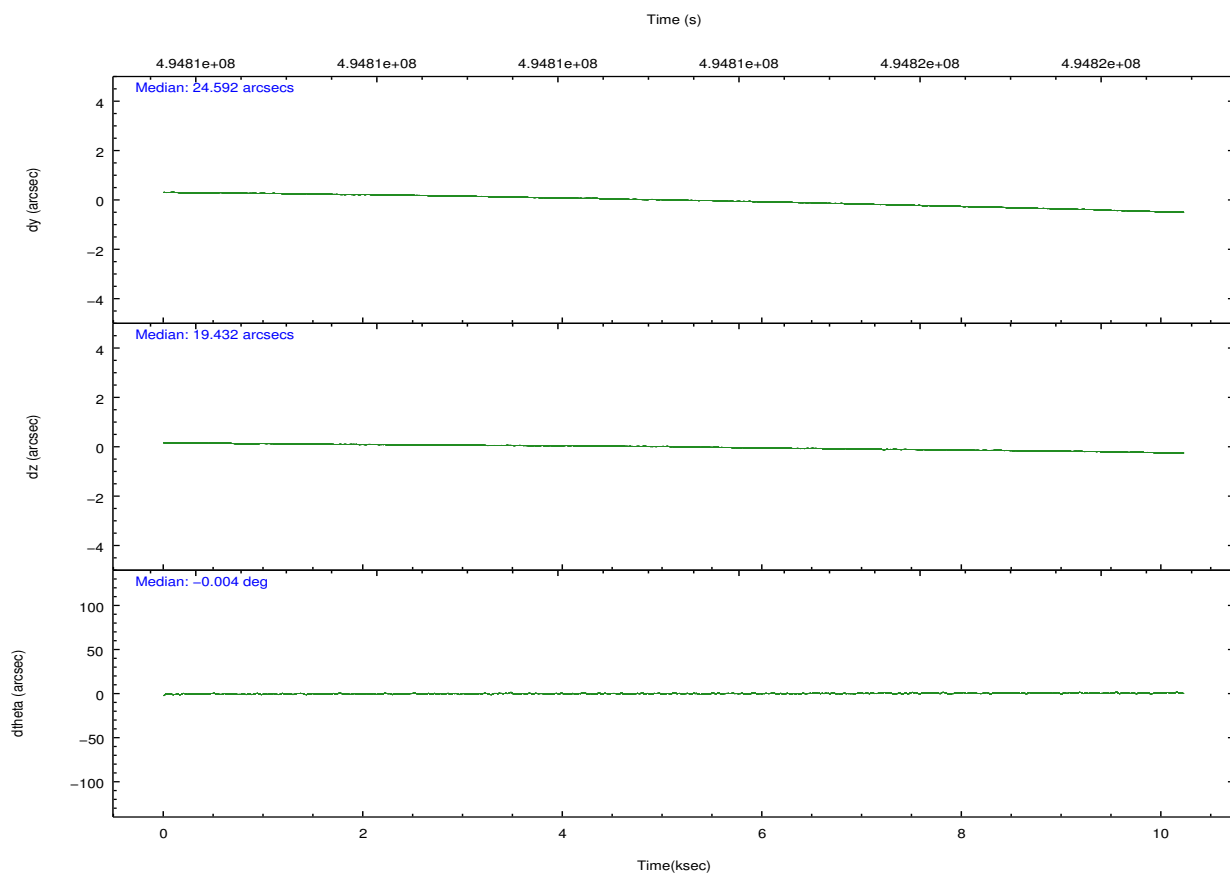
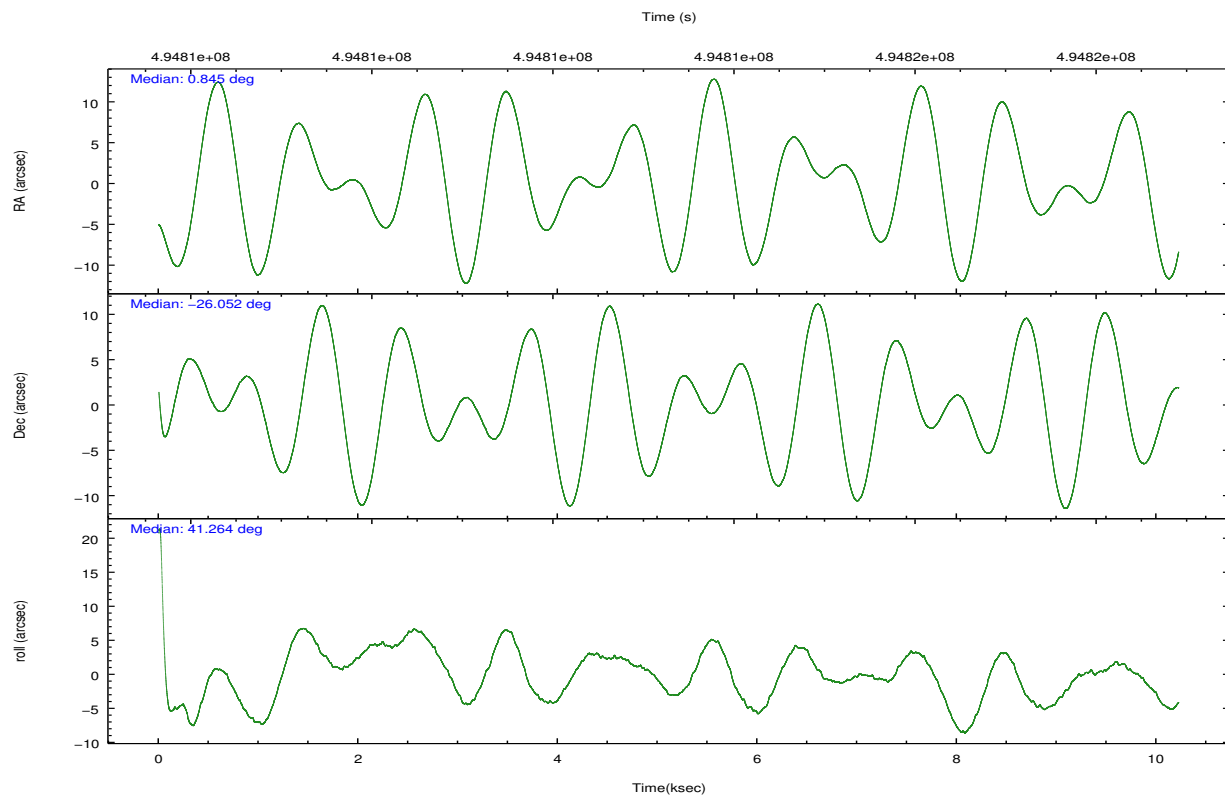
	ccd 2	ccd 3	ccd 5	ccd 6	ccd 7	ccd 8		ccd 2	ccd 3	ccd 5	ccd 6	ccd 7	ccd 8
level 1 events	43664	45156	82930	45067	63656	59232	grade 0 events	1807	2877	6992	1812	2654	4381
rejected events	38539	39026	41824	39591	35596	43834		4%	6%	8%	4%	4%	7%
rejected %	88%	86%	50%	87%	55%	74%	grade 1 events	24	32	152	20	80	48
								0%	0%	0%	0%	0%	0%
							grade 2 events	1219	1122	11694	1272	5845	3758
								2%	2%	14%	2%	9%	6%
							grade 3 events	484	551	1216	591	2415	1632
								1%	1%	1%	1%	3%	2%
							grade 4 events	527	560	1190	567	2329	1474
								1%	1%	1%	1%	3%	2%
							grade 5 events	2076	2344	5701	2364	6460	3572
								4%	5%	6%	5%	10%	6%
							grade 6 events	1090	1021	20026	1237	14825	4155
								2%	2%	24%	2%	23%	7%
							grade 7 events	36437	36649	35959	37204	29048	40212
								83%	81%	43%	82%	45%	67%

2.2 Compared Parameters

Parameter	Planned	Actual	Parameter	Planned	Actual
Instrument	ACIS	ACIS	Obspar format version number	7	7
Detector	ACIS-235678	ACIS-235678	Obspar file type	PREDICTED	ACTUAL
Grating	NONE	NONE	Obspar update status	NONE	UPDATED
Data mode	FAINT	FAINT	CCD I0 on	N	N
Observation mode	POINTING	POINTING	CCD I1 on	N	N
[deg] Pointing RA	0.835523	0.8448281107733351	CCD I2 on	O2	Y
[deg] Pointing Dec	-26.077684	-26.05166026577876	CCD I3 on	O1	Y
[deg] Pointing Roll	41.105438	41.26619883485557	CCD S0 on	N	N
[mm] SIM focus pos	-0.684267	-0.6828225247311905	CCD S1 on	O3	Y
[mm] SIM defocus	0	0.001444936568705701	CCD S2 on	Y	Y
[mm] SIM translation stage pos	-190.132523	-190.1425803651734	CCD S3 on	Y	Y
[mm] SIM translation stage offset	0	0.01005778216563158	CCD S4 on	Y	Y
[s] Observation start time (MET)	494808390.184000	494807406.19017	CCD S5 on	N	N
Observation start date	2013-09-05T22:45:23	2013-09-05T22:30:06	Number of optional ACIS chips dropped	0	0
[s] Observation end time (MET)	494818390.184000	494819073.2533	On-chip summing requested	N	N
Observation end date	2013-09-06T01:32:03	2013-09-06T01:44:33	Subarray requested	NONE	NONE
Read mode	TIMED	TIMED	Alternating exposures requested	N	N
			[s] Primary exposure time	0.000000	3.2

2.3 Aspect



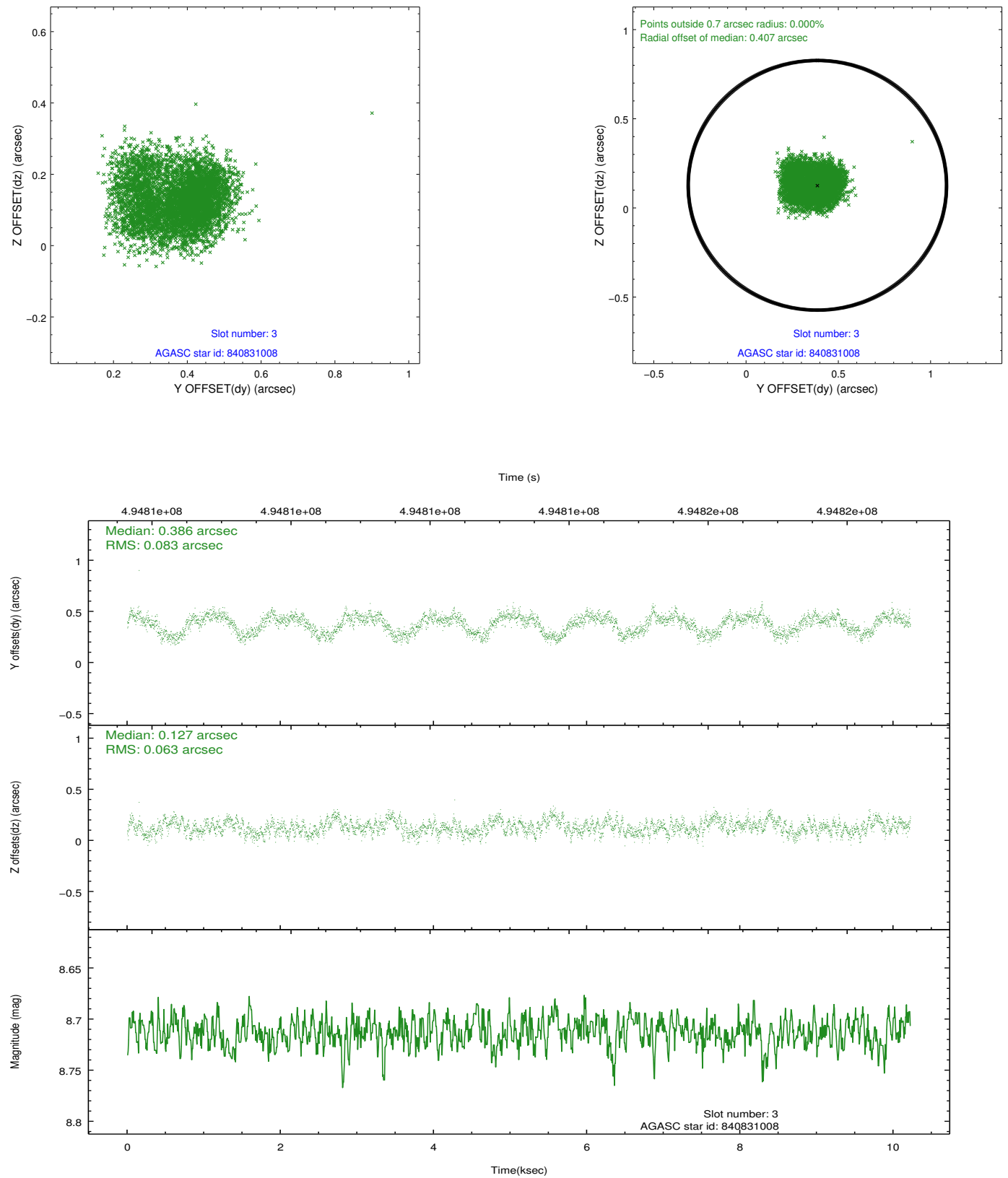


Slot Statistics

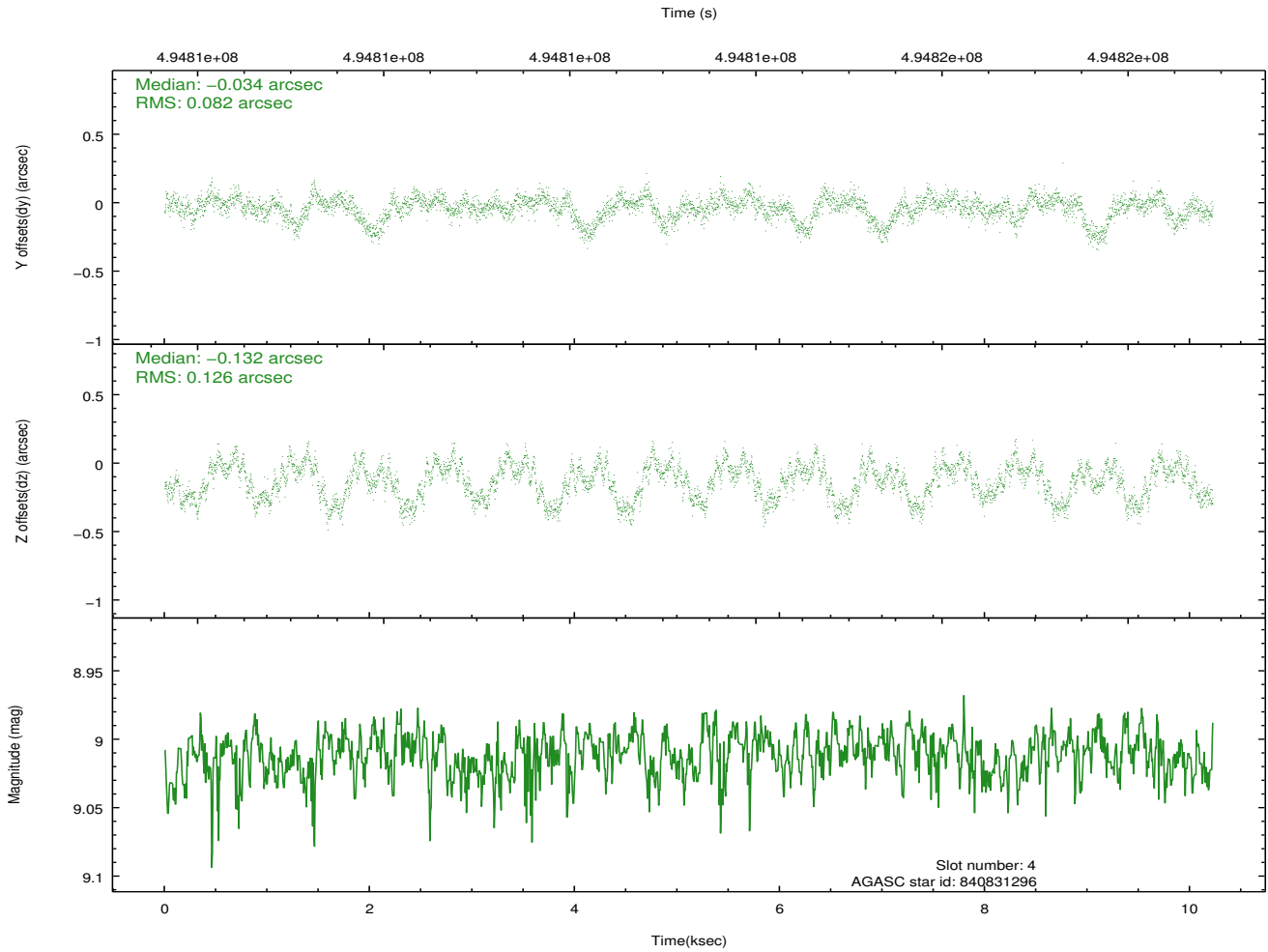
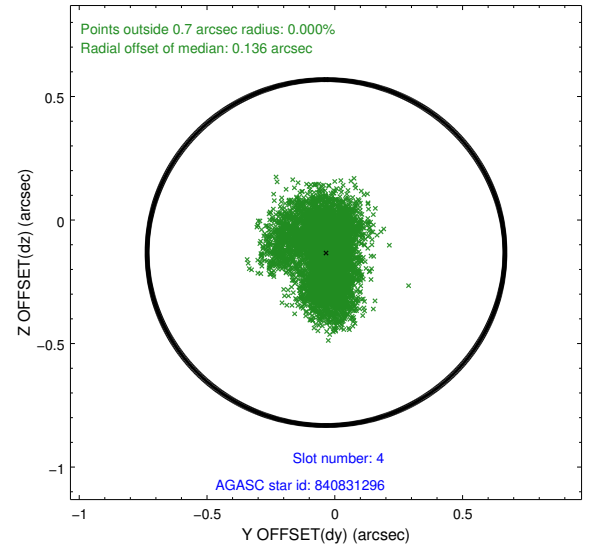
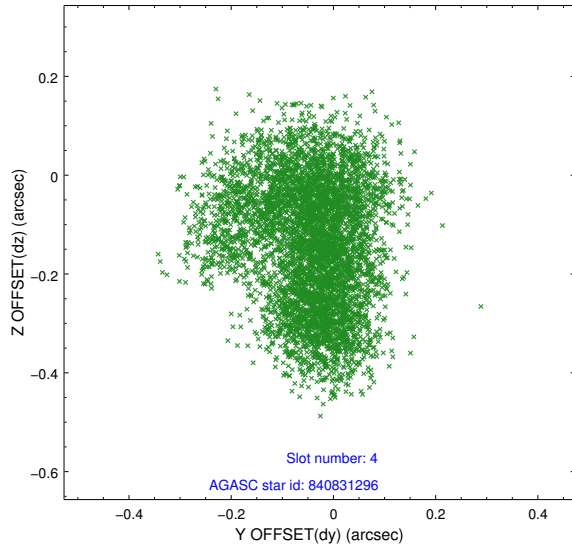
slot	status	used	id	mag	n_pts	med_dy	med_dz	dr1	dr2	ra	dec	mean_y	mean_z
0	FID		ACIS-S-2	7.00	2494	-0.182	-0.042	0.011	0.019	0.000000	0.000000	-777.97	-1740.89
1	FID		ACIS-S-4	7.09	2494	0.363	0.099	0.006	0.012	0.000000	0.000000	2135.61	167.18
2	FID		ACIS-S-5	7.11	2494	-0.213	-0.049	0.011	0.018	0.000000	0.000000	-1830.18	161.31
3	GUIDE	used	840831008	8.71	4987	0.386	0.127	0.113	0.177	0.855542	-26.415181	-749.34	-957.93
4	GUIDE	used	840831296	9.01	4967	-0.034	-0.132	0.167	0.247	1.032971	-25.892665	920.37	79.22
5	GUIDE	used	840832352	8.25	4987	-0.429	-0.325	0.108	0.153	0.775324	-25.261110	1784.61	2343.60
6	GUIDE	used	840833168	9.29	4984	0.121	0.324	0.127	0.207	0.400325	-26.469934	-1985.82	-143.51
7	GUIDE	used	840833360	9.18	4977	-0.020	0.014	0.176	0.269	0.455843	-25.798534	-272.26	1562.39

2.4 Star Slots

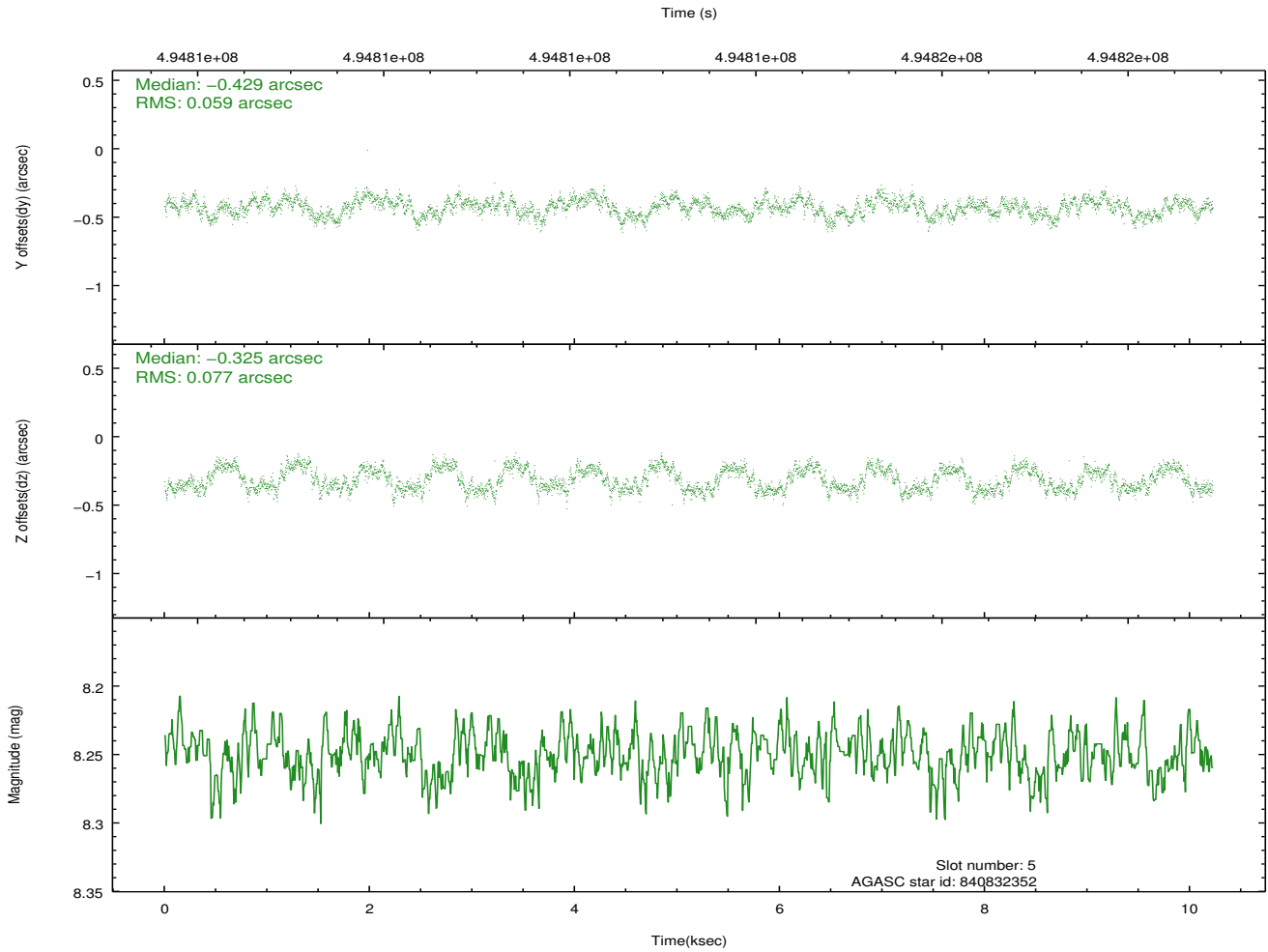
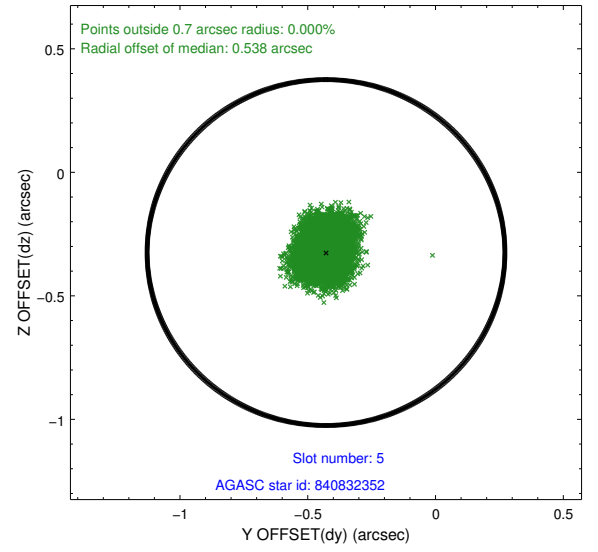
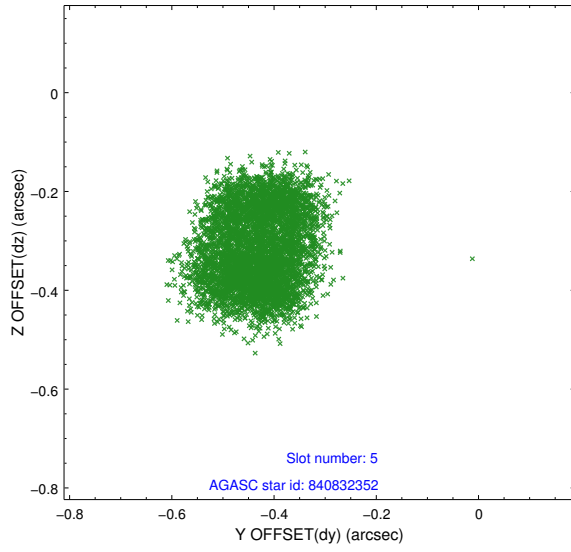
2.4.1 Slot 3



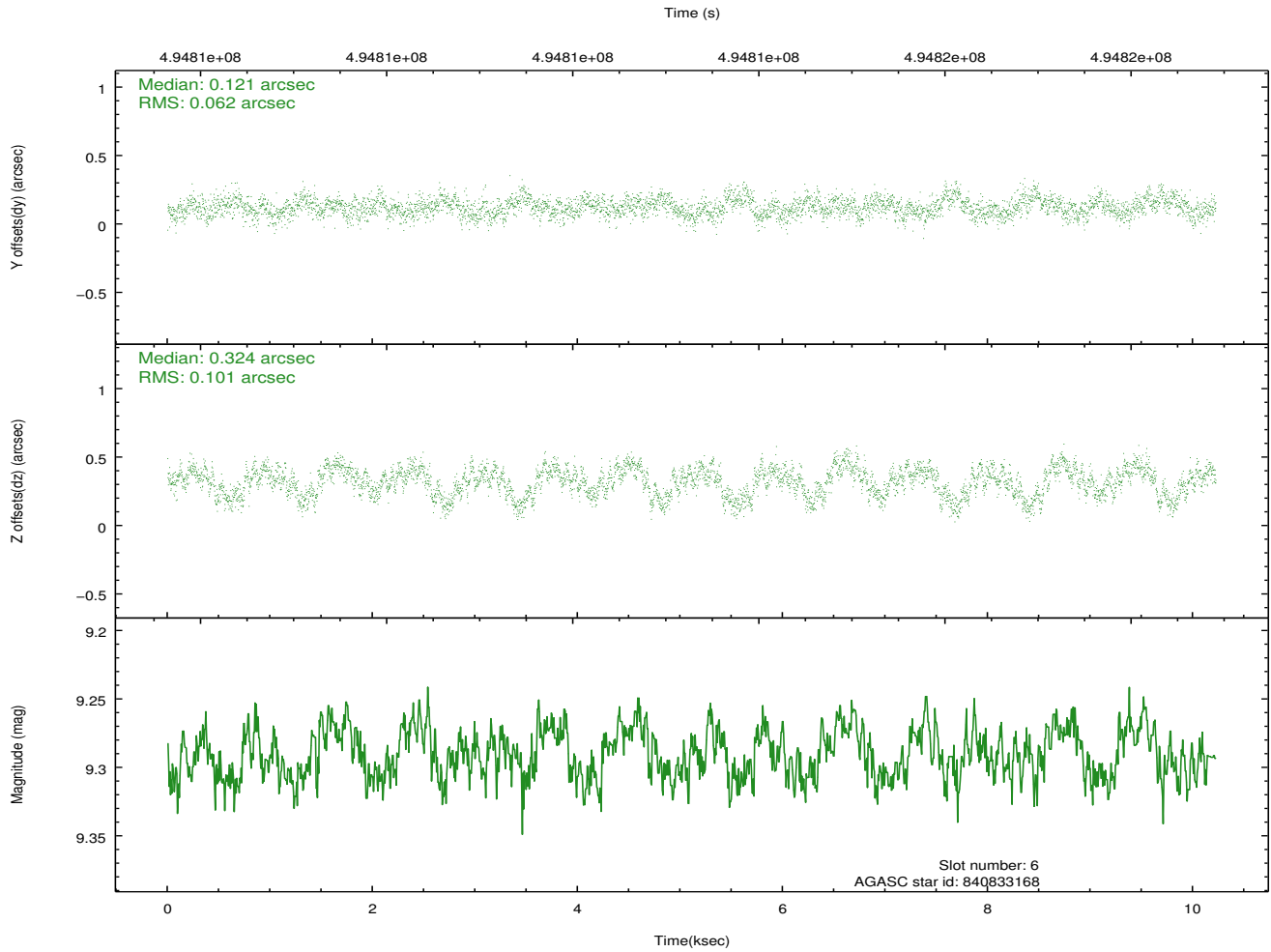
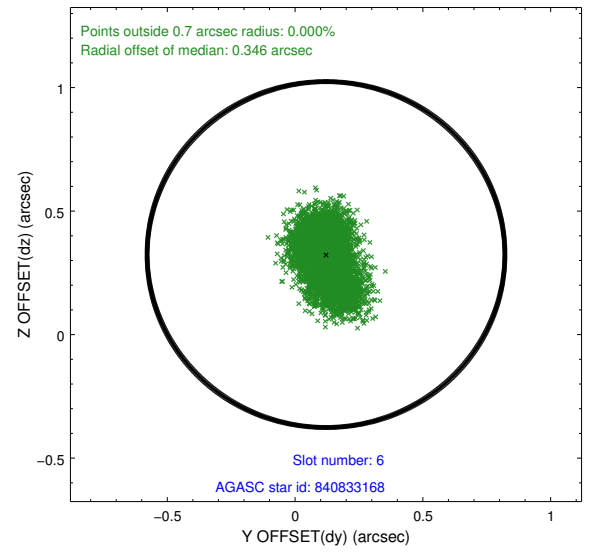
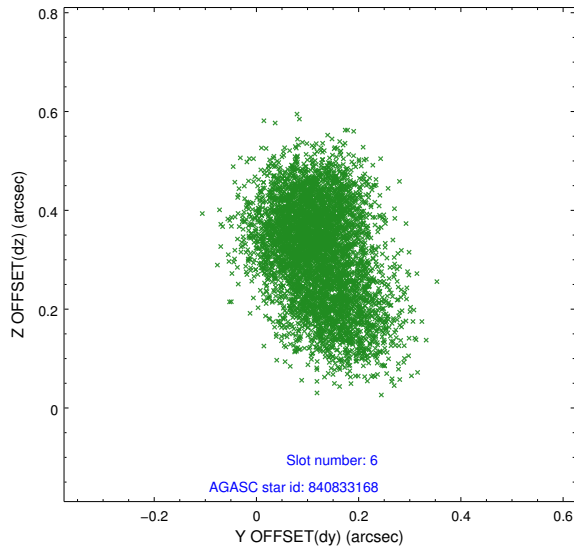
2.4.2 Slot 4



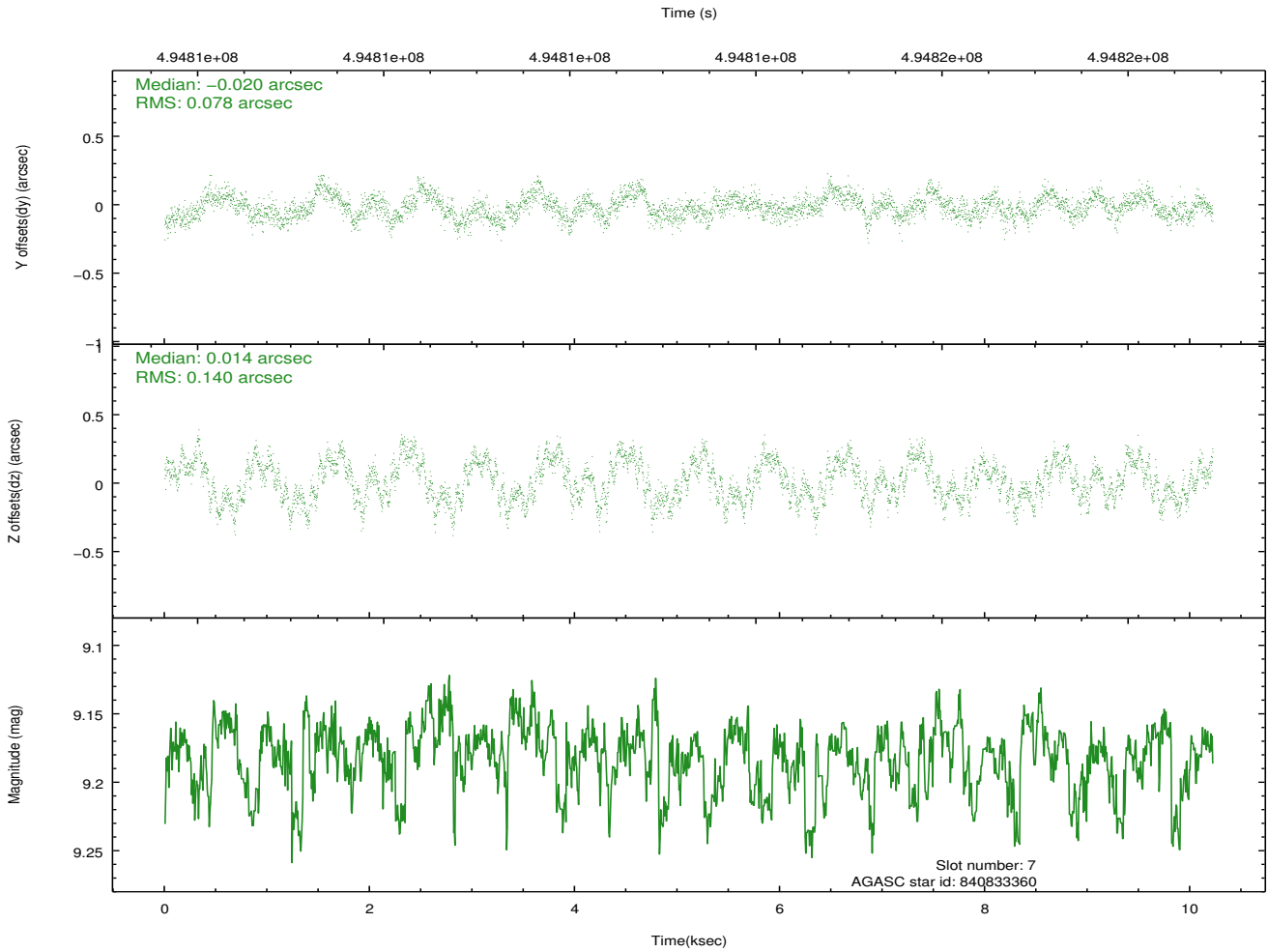
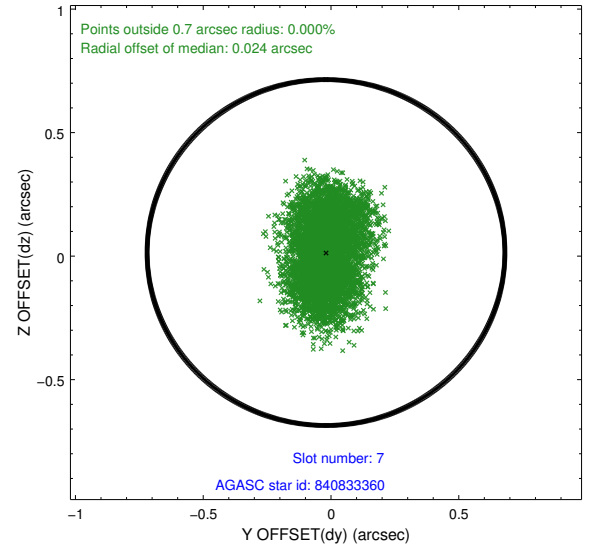
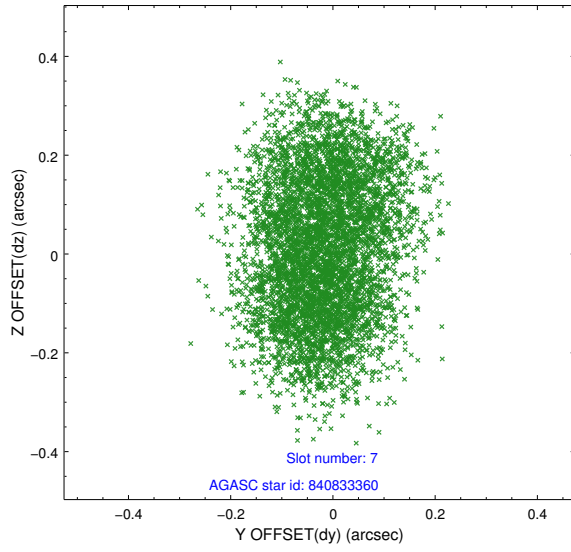
2.4.3 Slot 5



2.4.4 Slot 6

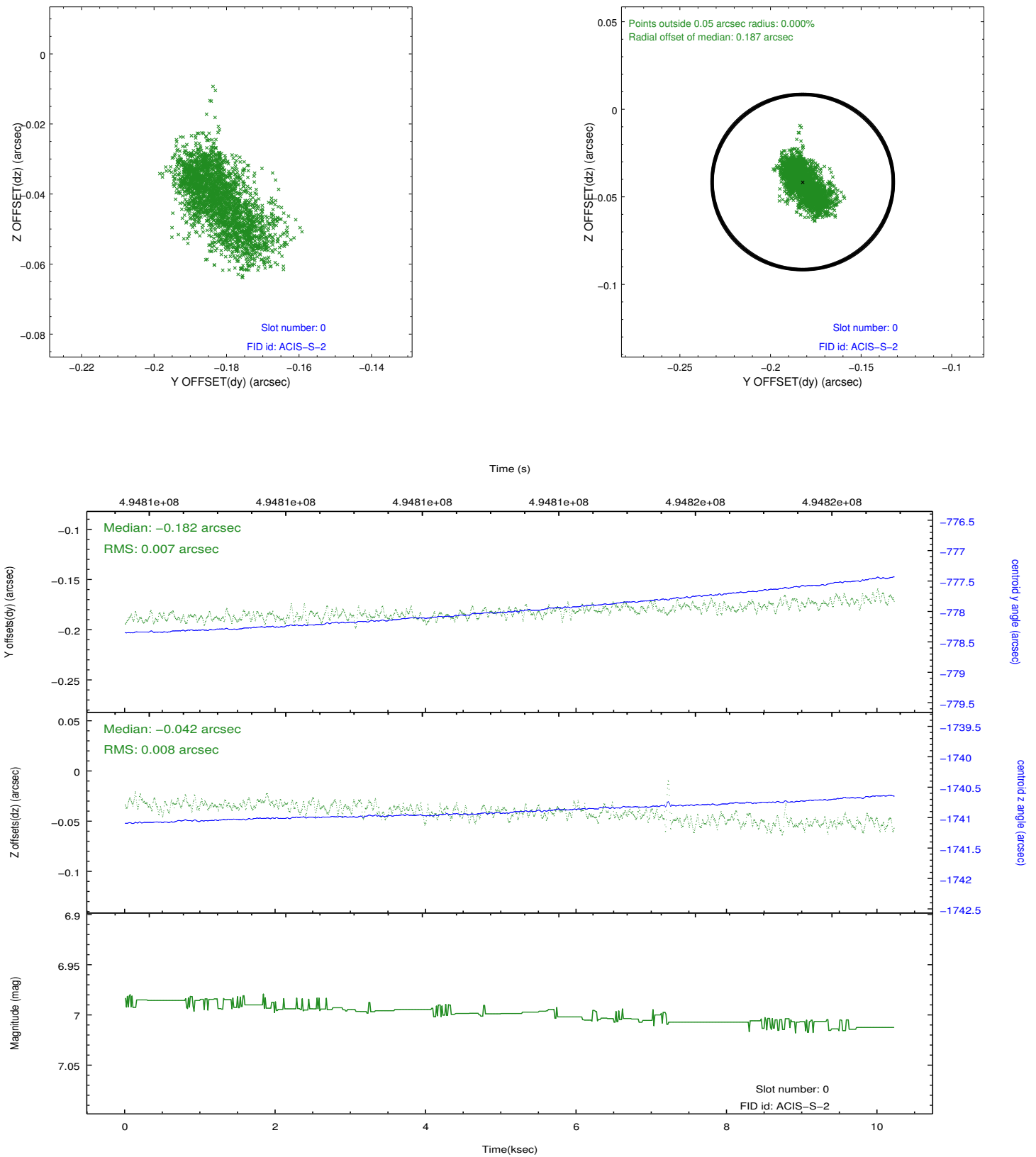


2.4.5 Slot 7

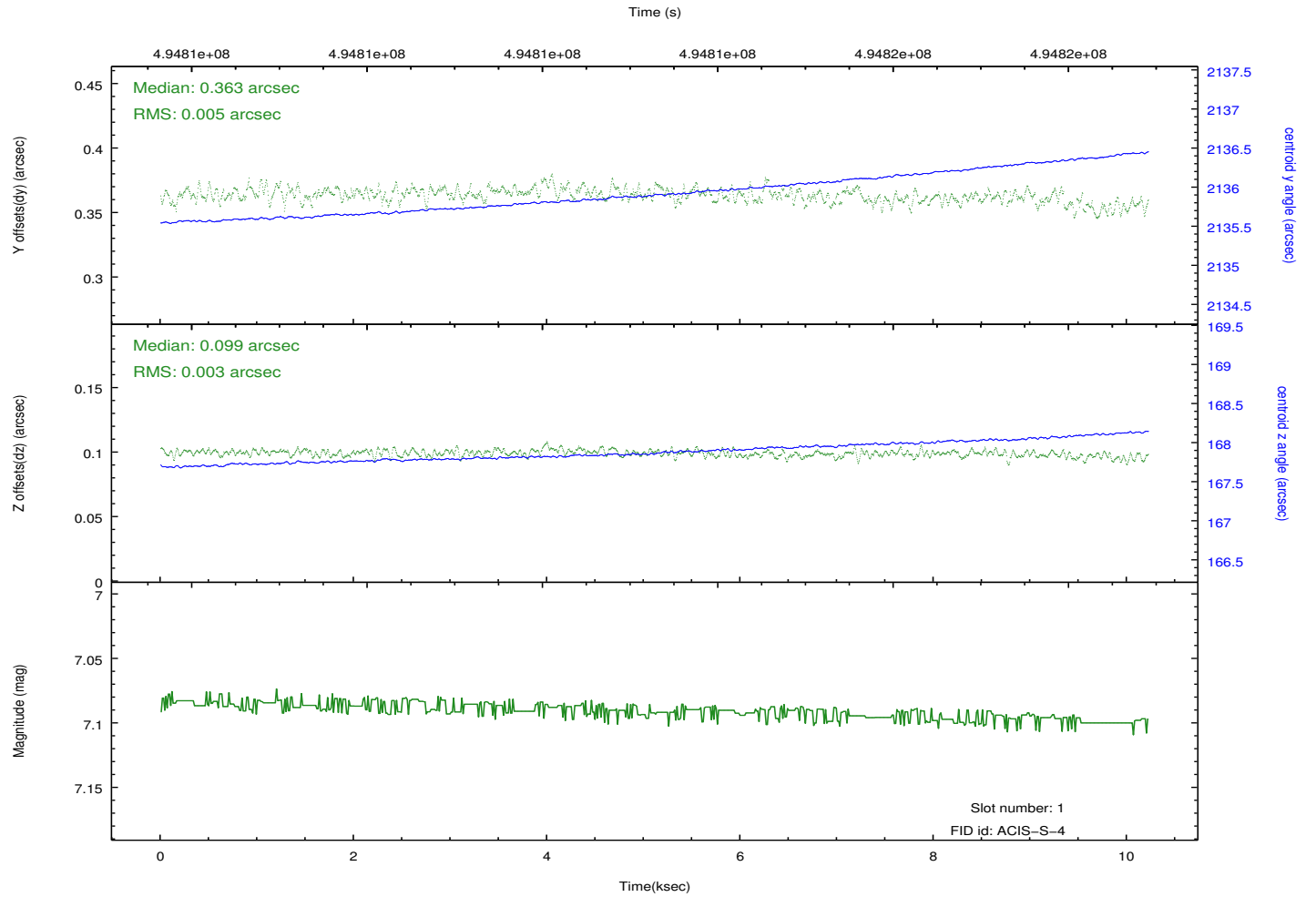
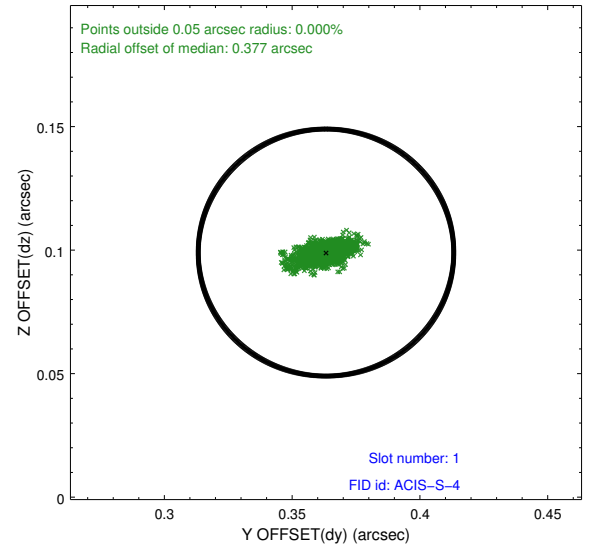
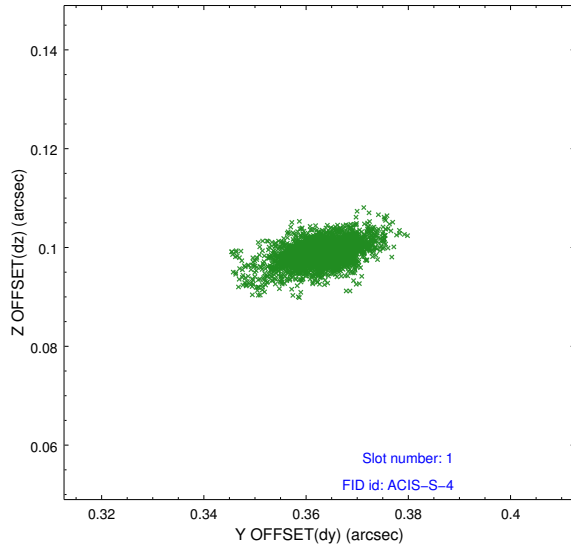


2.5 FID Slots

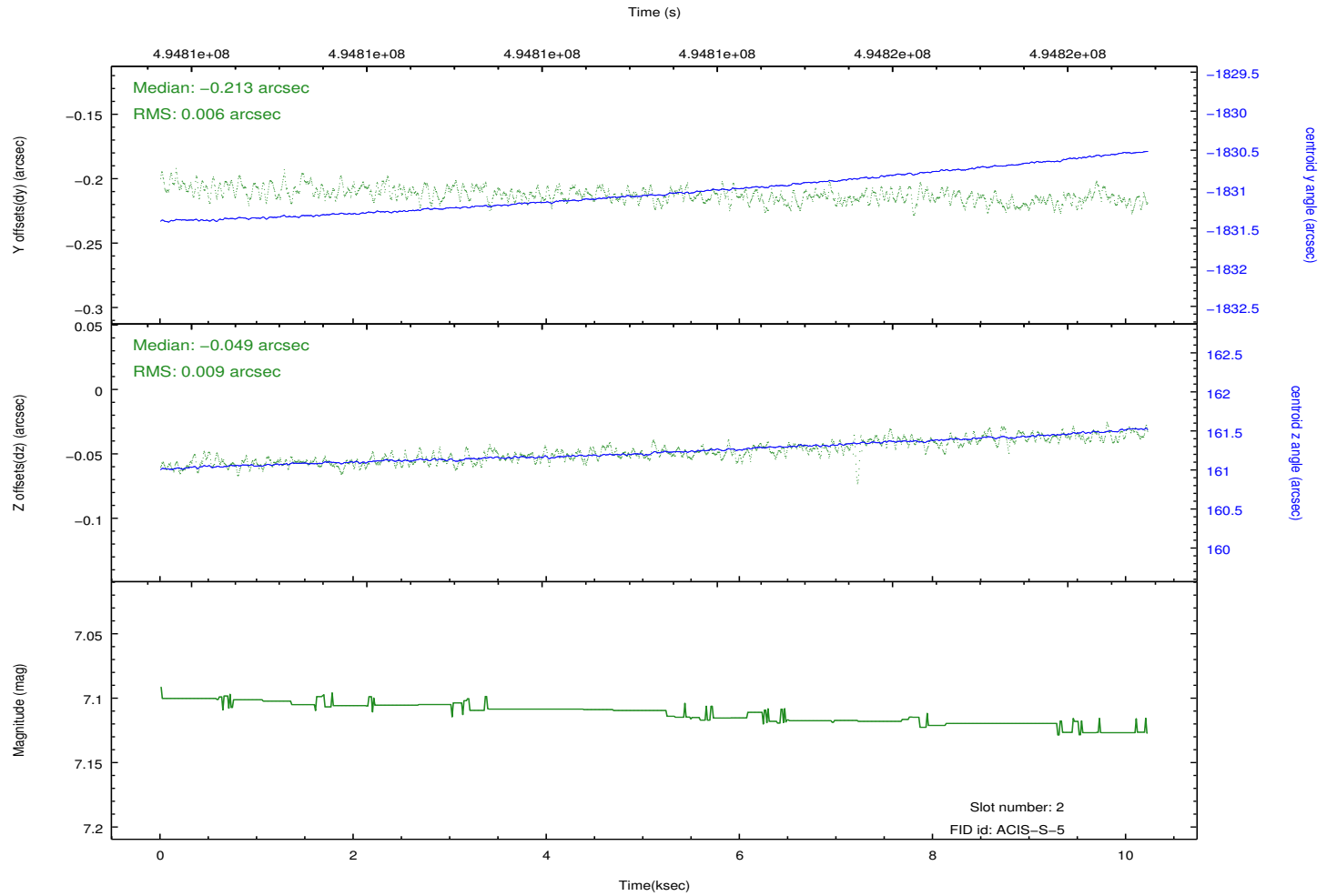
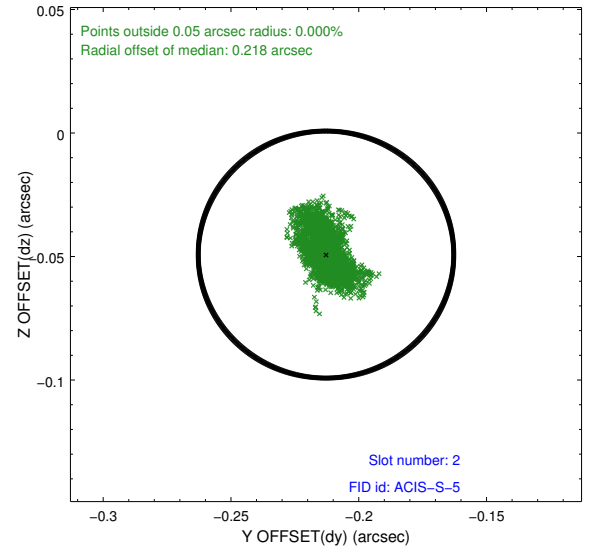
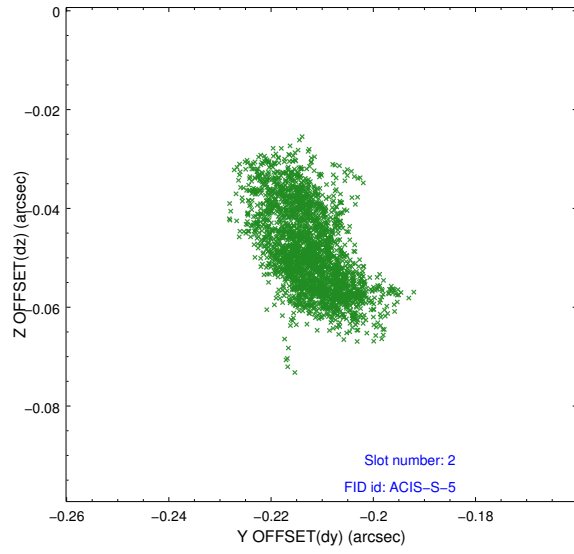
2.5.1 Slot 0



2.5.2 Slot 1



2.5.3 Slot 2



A Summary

A.1 Status

V&V Scientist	Jen Lauer
V&V Date (YYYY-MM-DD)	2014.12.12
V&V Edition	1
V&V Disposition and Status	OK
V&V Charge Time	9.9679999629259

A.2 Comments

These data have been reprocessed with new aspect alignment calibration files that correct small mean offsets (up to 0.4 arcsecs) and improve overall astrometric accuracy. The new calibration was determined using data from the time period being reprocessed and was performed using cross-correlation of X-ray sources with radio and optical counterparts.