

V&V Reference Report

L2 ASCDS Version : 8.4.5

Observation 14476 - L2 Version 2
Chandra X-Ray Center

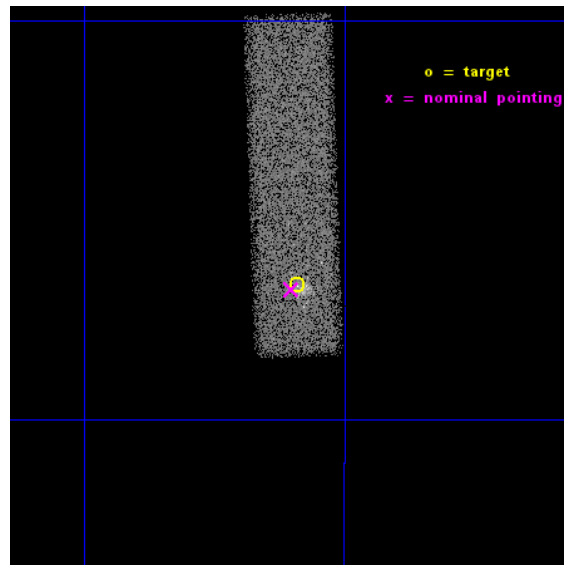
L2 Processing Date : Nov 28 2014

Contents

1	Front	2
2	OBI	3
2.1	OBI	3
2.1.1	Images	3
2.1.2	Bias	3
2.1.3	Parameters	4
2.1.4	Events	4
2.2	Compared Parameters	5
2.3	Aspect	6
2.4	Star Slots	9
2.4.1	Slot 3	9
2.4.2	Slot 4	10
2.4.3	Slot 5	11
2.4.4	Slot 6	12
2.4.5	Slot 7	13
2.5	FID Slots	14
2.5.1	Slot 0	14
2.5.2	Slot 1	15
2.5.3	Slot 2	16
A	Summary	17
A.1	Status	17
A.2	Comments	17

1 Front

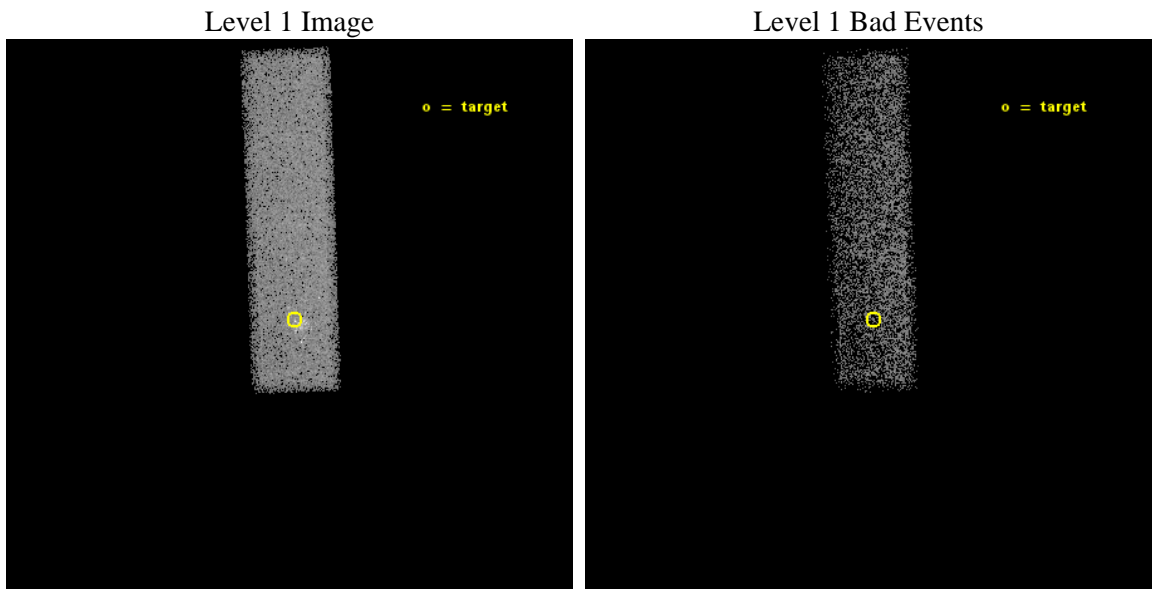
seq_num	401438	Sequence number
obs_id	14476	Observation id
title	Crust cooling of accretion heated neutron stars	Proposal title
observer	Dr. Rudy Wijnands	Principal investigator
object	Swift J174805.3-244637	Source name
dtcycle	0	
cycle	P	events from which exps? Prim/Second/Both
ra_targ	267.022554	Observer's specified target RA [deg]
dec_targ	-24.777131	Observer's specified target Dec [deg]
ra_nom	267.02531438519	Nominal RA [deg]
dec_nom	-24.778857794239	Nominal Dec [deg]
roll_nom	267.98862829321	Nominal Roll [deg]
revision	2	Processing version of data
ontime	30064.000448048	Sum of GTIs [s]
livetime	28596.97559978	Livetime [s]
ontime7	30064.000448048	Sum of GTIs [s]
l2events	28763	Number of level 2 events



2 OBI

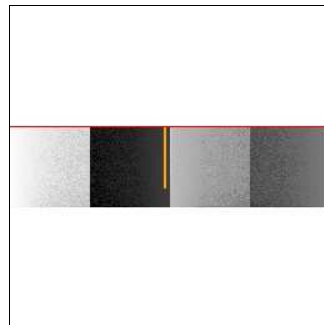
2.1 OBI

2.1.1 Images



2.1.2 Bias

Chip 7



2.1.3 Parameters

obi_num	0	Obi number	sched_exp_time	30000.000000	[s] Scheduled observation exposure time
ascdsver	10.3	Processing system revision	ontime	30064.000448048	Sum of GTIs [s]
caldbver	4.6.4	 	ontime7	30064.000448048	Sum of GTIs [s]
date	2014-11-28T23:52:19	Date and time of file creation	l1events	58454	Number of level 1 events
revision	2	Processing version of data			

2.1.4 Events

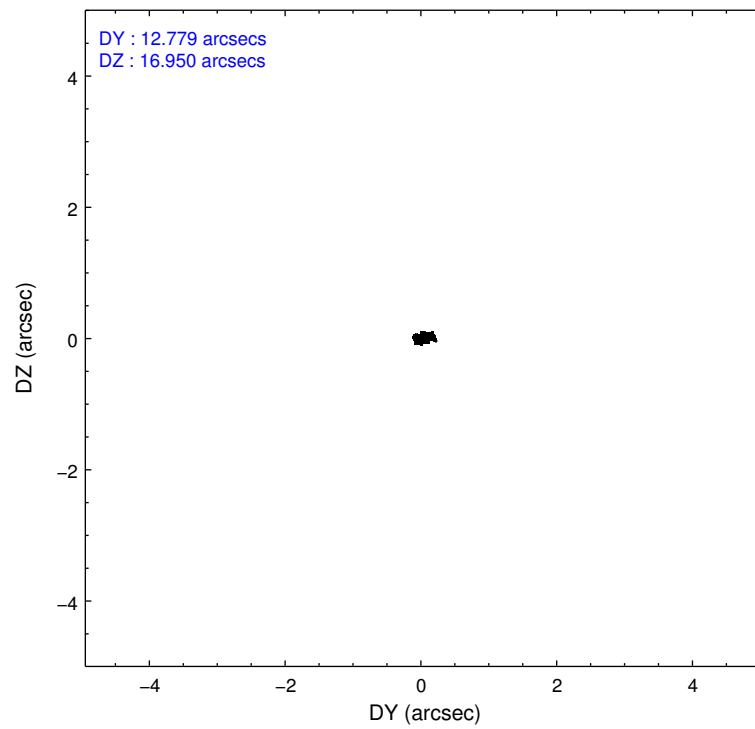
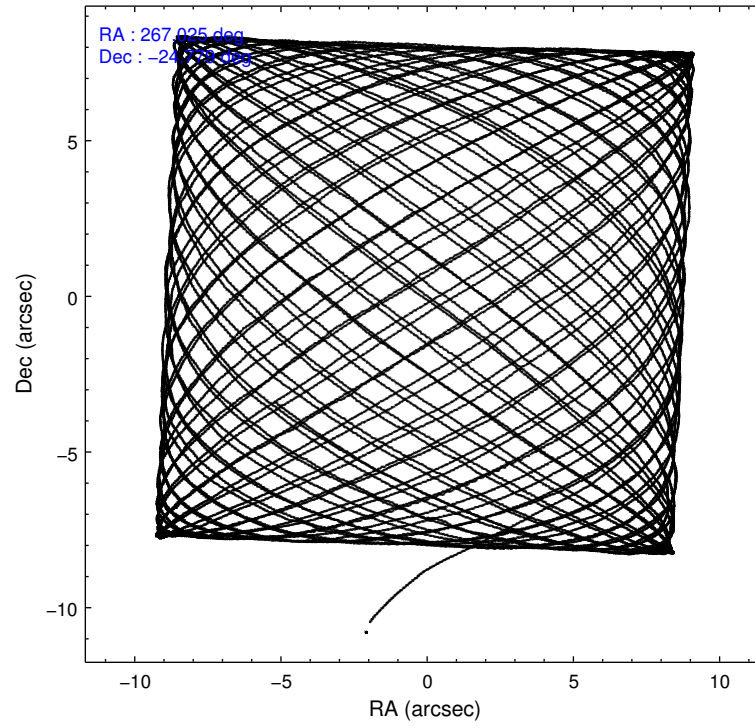
	ccd 7
level 1 events	58454
rejected events	28925
rejected %	49%

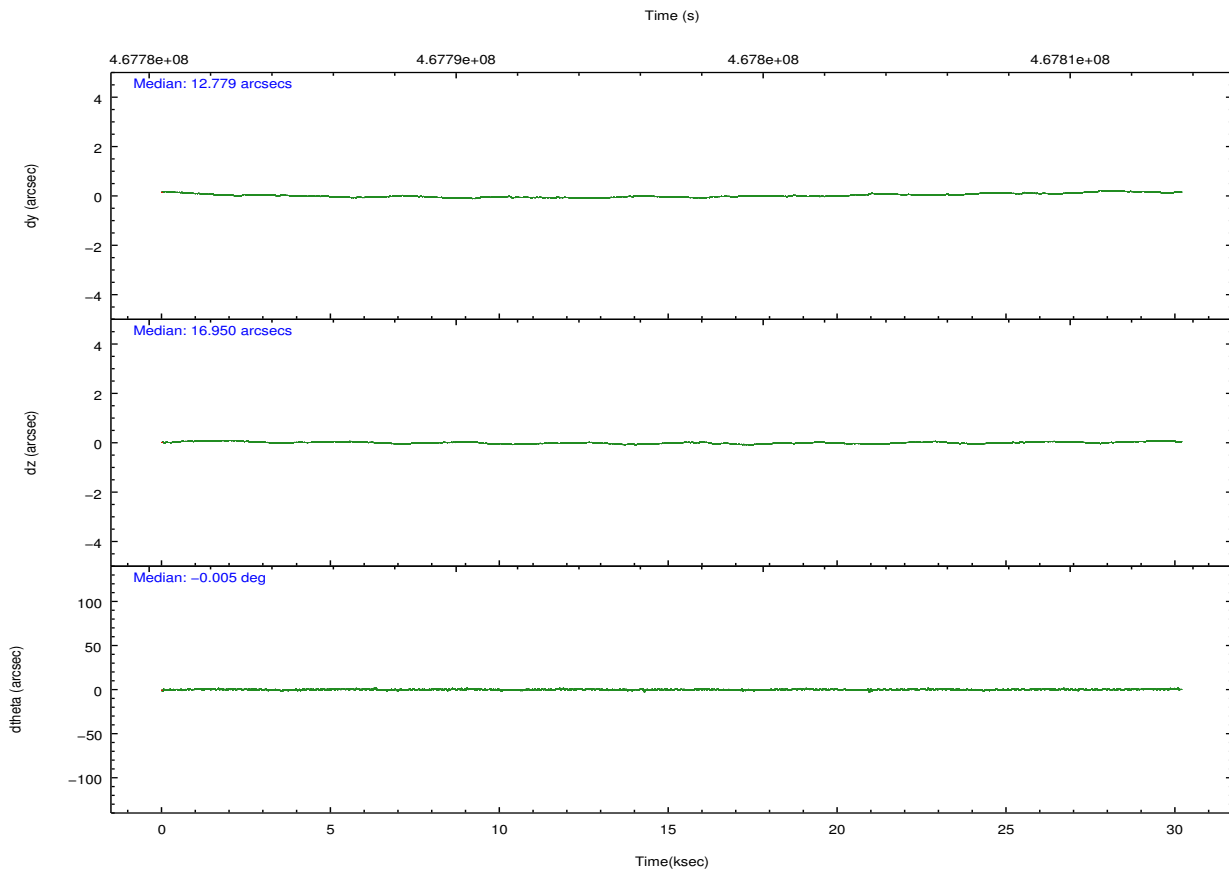
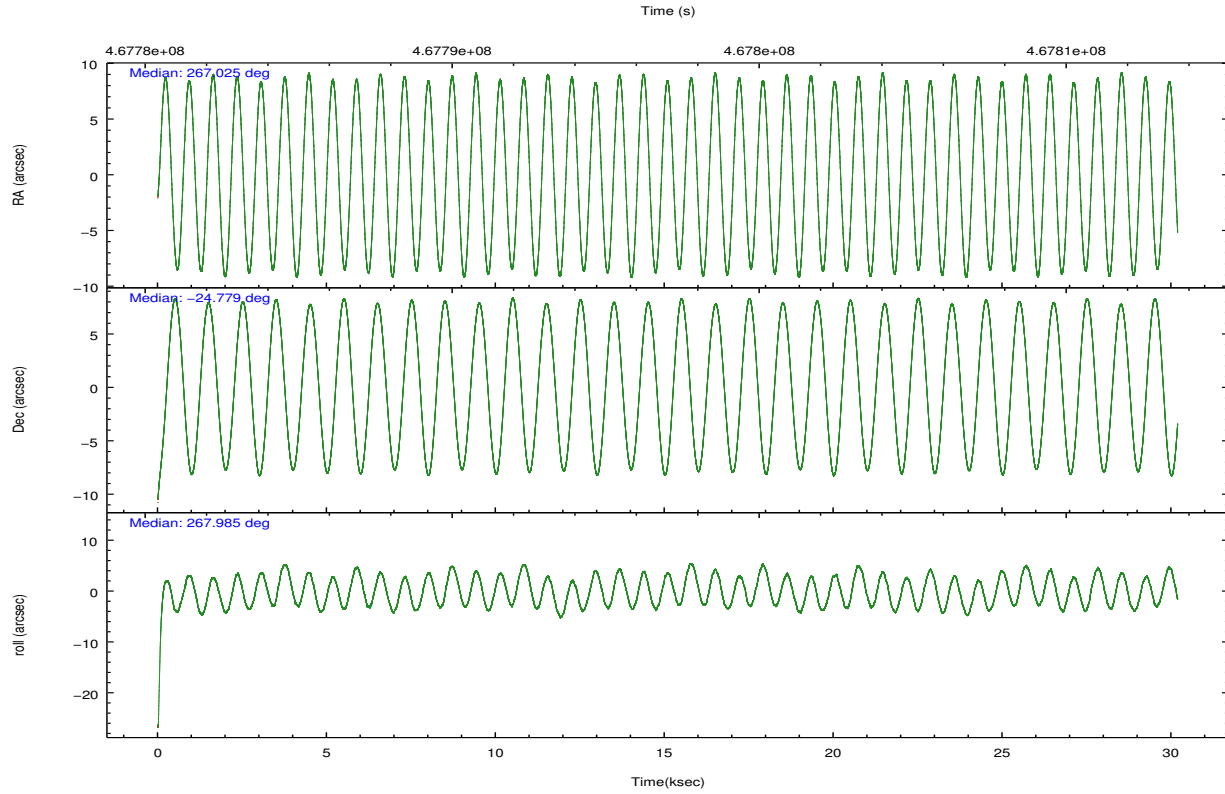
	ccd 7
grade 0 events	3396
	5%
grade 1 events	73
	0%
grade 2 events	6198
	10%
grade 3 events	3335
	5%
grade 4 events	3345
	5%
grade 5 events	5863
	10%
grade 6 events	13255
	22%
grade 7 events	22989
	39%

2.2 Compared Parameters

Parameter	Planned	Actual	Parameter	Planned	Actual
Instrument	ACIS	ACIS	Obspar format version number	7	7
Detector	ACIS-7	ACIS-7	Obspar file type	PREDICTED	ACTUAL
Grating	NONE	NONE	Obspar update status	NONE	UPDATED
Data mode	FAINT	FAINT	Number of optional ACIS chips dropped	0	0
Observation mode	POINTING	POINTING	On-chip summing requested	N	N
[deg] Pointing RA	267.010811	267.0253143851912	Subarray requested	CUSTOM	1/4
[deg] Pointing Dec	-24.754883	-24.7788577942392	Subarray start row	384	384
[deg] Pointing Roll	267.825932	267.9886282932092	Subarray row count	256	256
[mm] SIM focus pos	-0.684267	-0.6828225247311905	Alternating exposures requested	N	N
[mm] SIM defocus	0	0.001444936568705701	[s] Primary exposure time	0.000000	0.8
[mm] SIM translation stage pos	-190.132523	-190.1400660498719			
[mm] SIM translation stage offset	0	0.00754346686406393			
[s] Observation start time (MET)	467782122.184000	467781345.03975			
Observation start date	2012-10-28T03:27:35	2012-10-28T03:15:45			
[s] Observation end time (MET)	467812122.184000	467813232.27896			
Observation end date	2012-10-28T11:47:35	2012-10-28T12:07:12			
Read mode	TIMED	TIMED			

2.3 Aspect





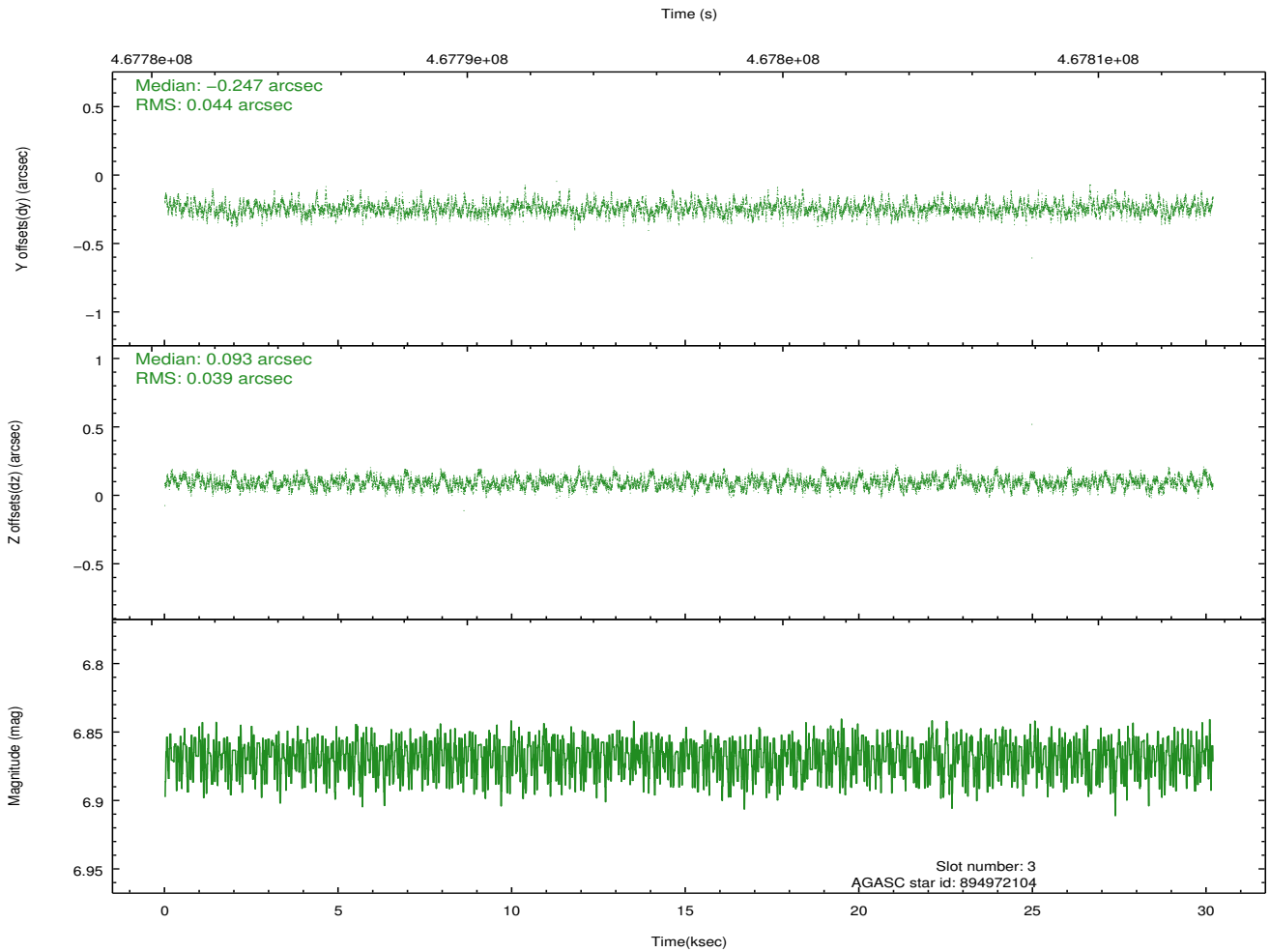
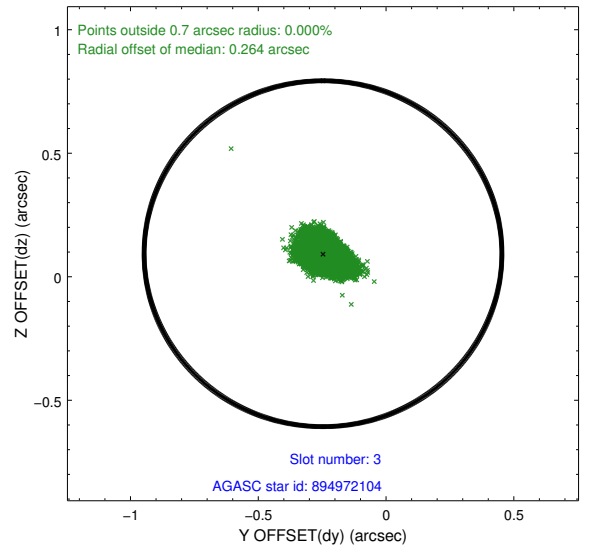
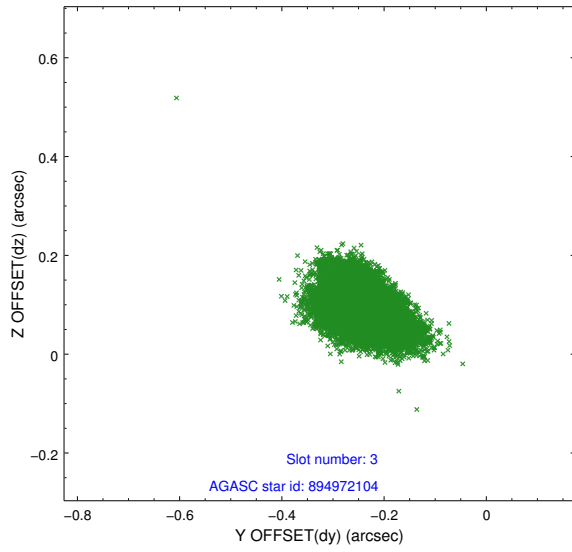
Slot Statistics

slot	status	used	id	mag	n_pts	med_dy	med_dz	dr1	dr2	ra	dec	mean_y	mean_z
0	FID		ACIS-S-1	7.00	7364	0.104	-0.074	0.007	0.011	0.000000	0.000000	930.42	-1734.09
1	FID		ACIS-S-2	6.91	7364	-0.084	0.035	0.006	0.011	0.000000	0.000000	-765.63	-1738.60
2	FID		ACIS-S-6	7.12	7364	-0.040	0.044	0.006	0.011	0.000000	0.000000	395.92	807.29
3	GUIDE	used	894972104	6.87	14727	-0.247	0.093	0.060	0.104	267.489380	-24.207054	-2027.32	1494.96
4	GUIDE	used	894973544	8.06	14665	-0.108	0.114	0.056	0.088	266.605572	-24.141151	-2155.03	-1414.13
5	GUIDE	used	895485920	8.67	14722	0.191	0.113	0.071	0.115	266.932426	-25.188840	1571.18	-195.68
6	GUIDE	used	895486672	8.99	14701	-0.102	-0.003	0.109	0.172	267.522168	-25.216127	1599.91	1727.35
7	GUIDE	used	895489704	8.79	14715	0.265	-0.315	0.097	0.166	266.328076	-25.361339	2273.28	-2136.13

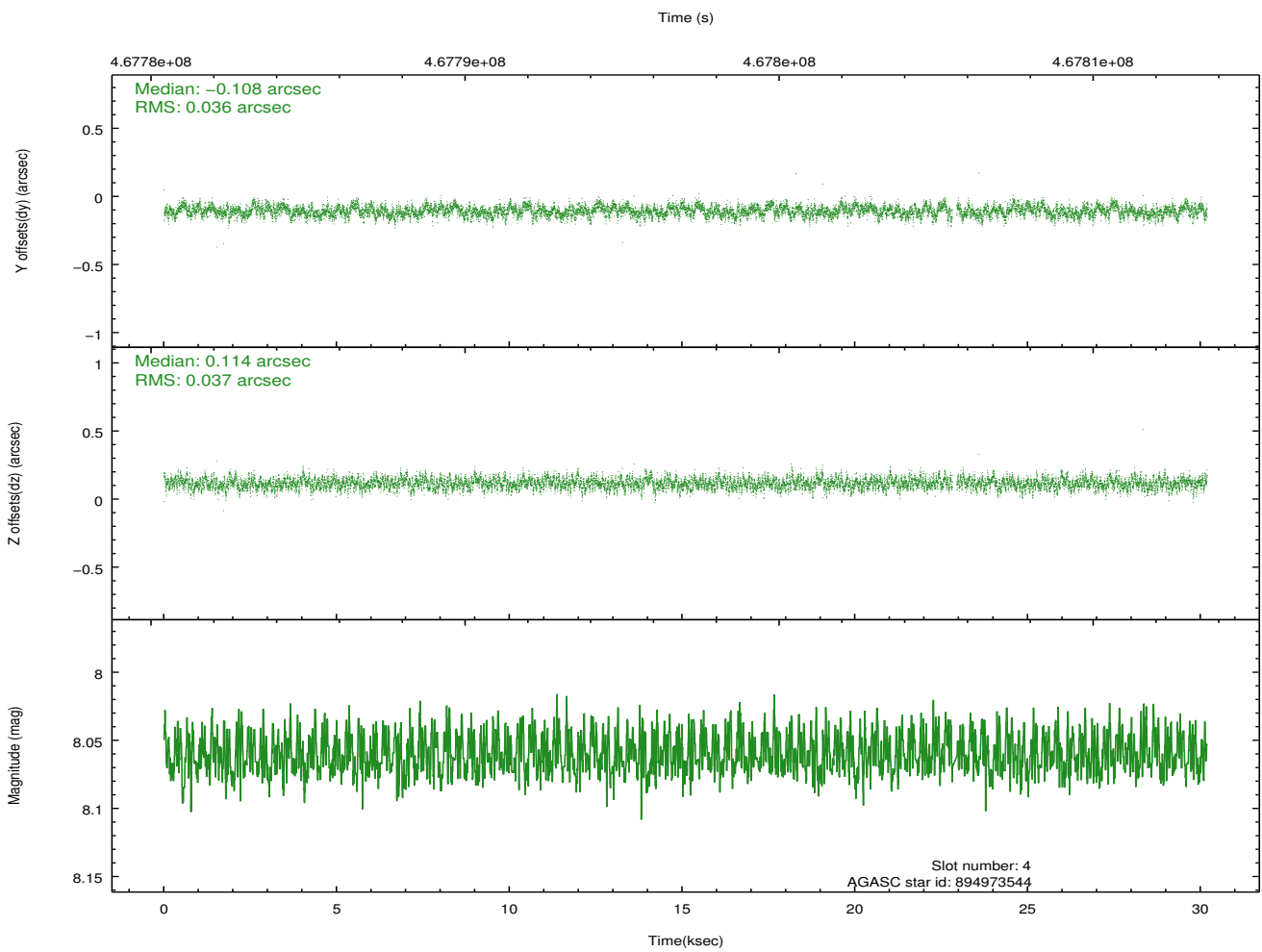
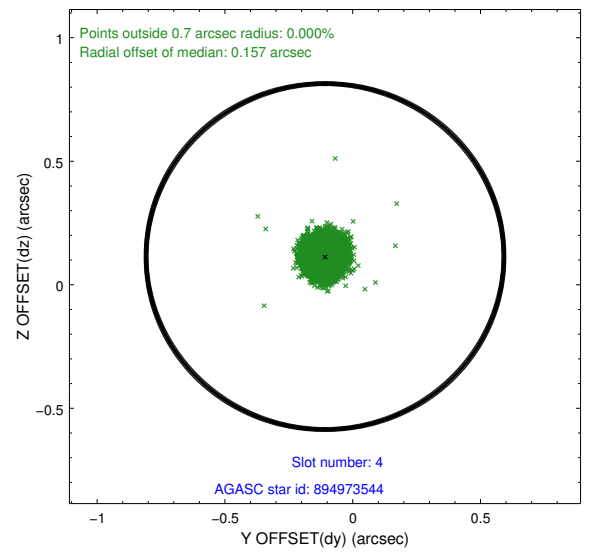
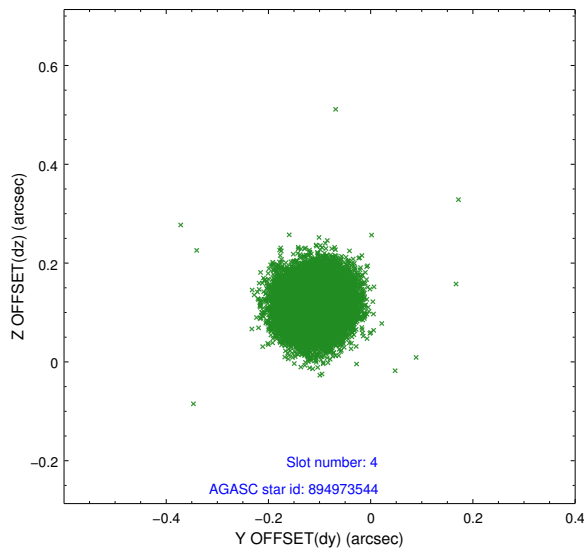
∞

2.4 Star Slots

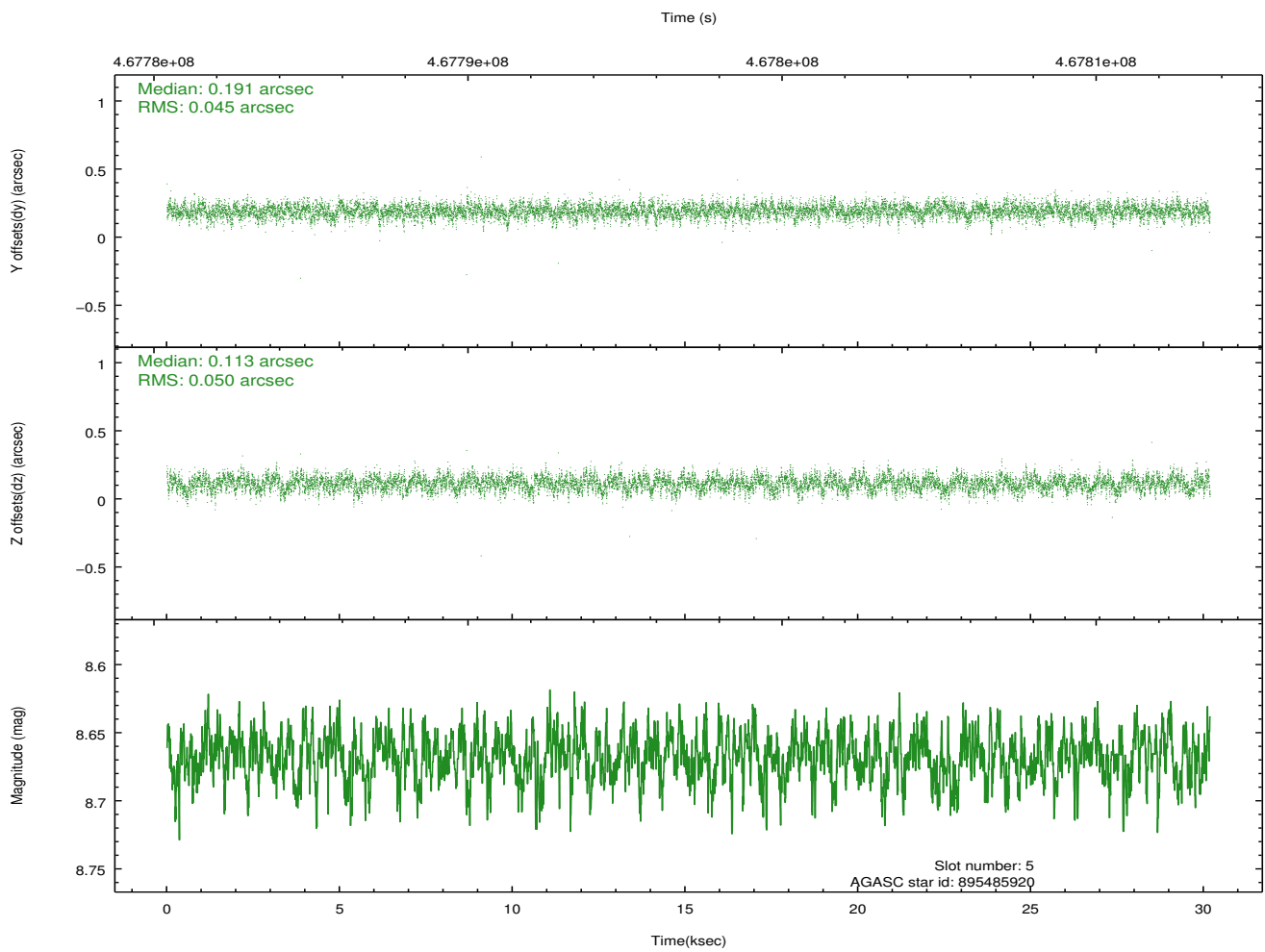
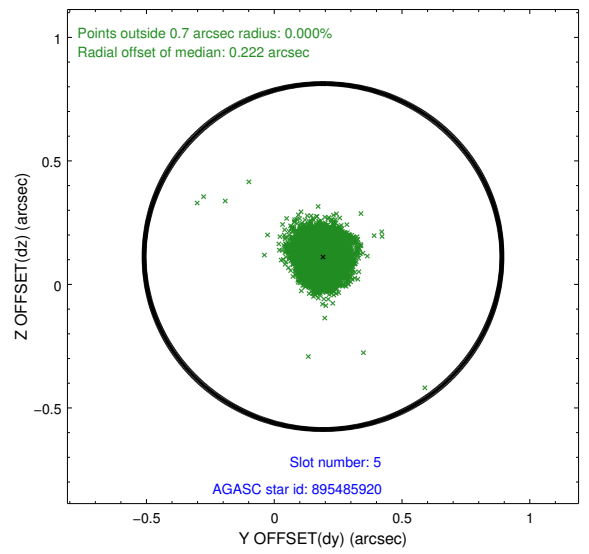
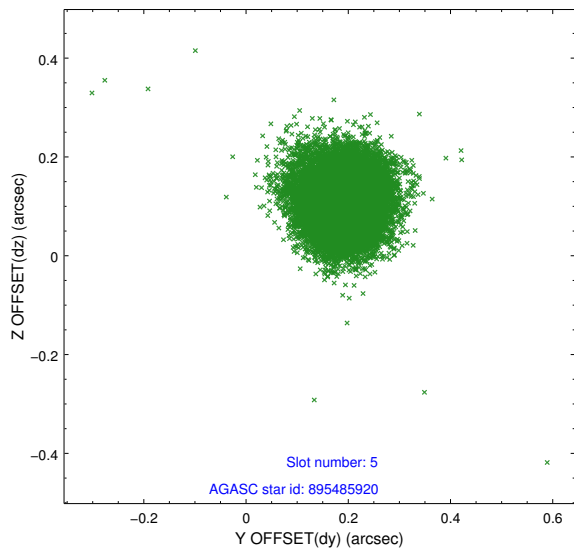
2.4.1 Slot 3



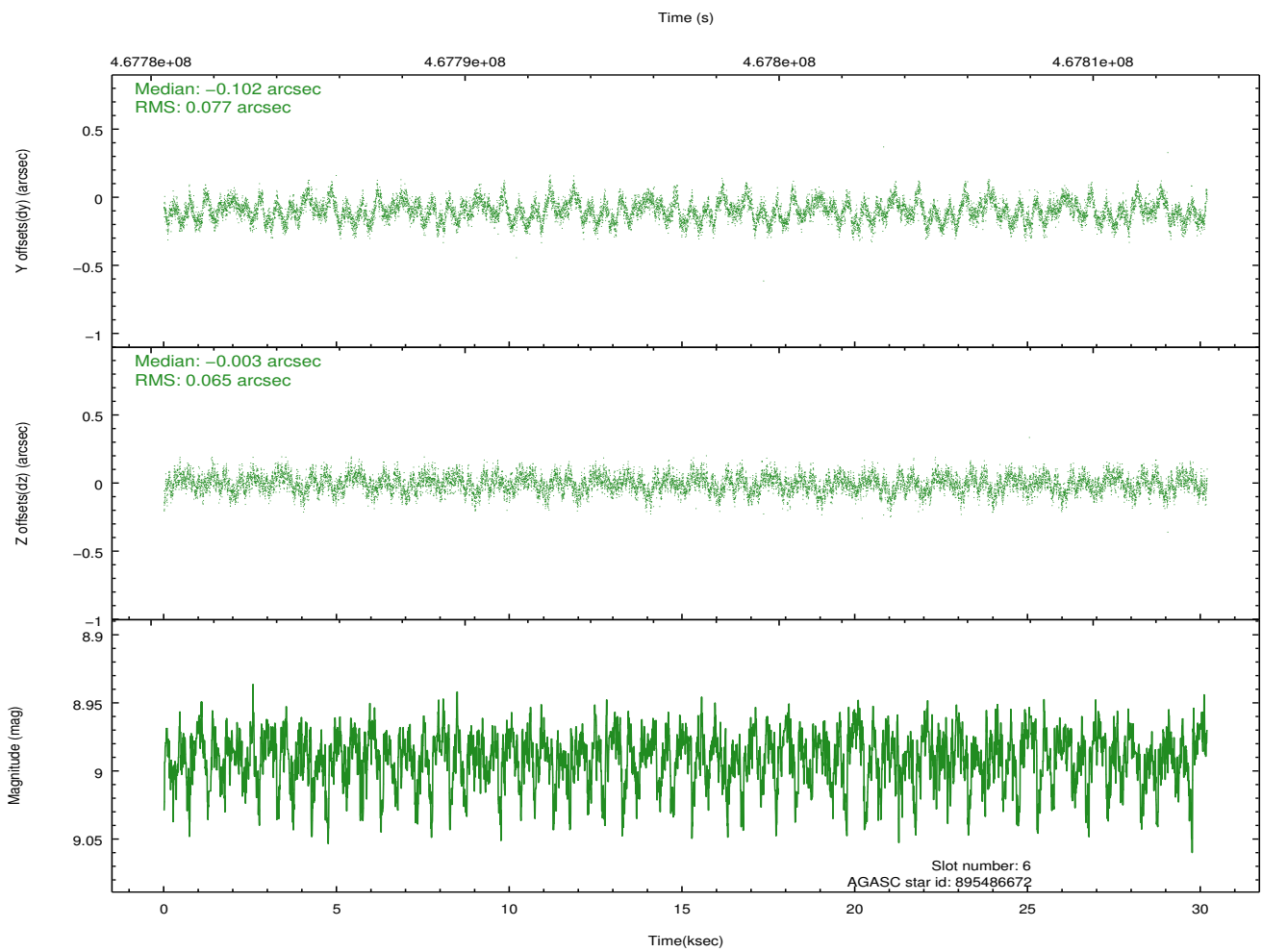
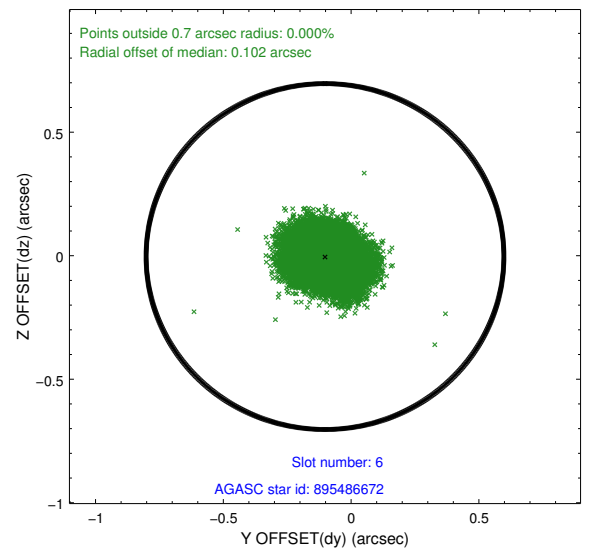
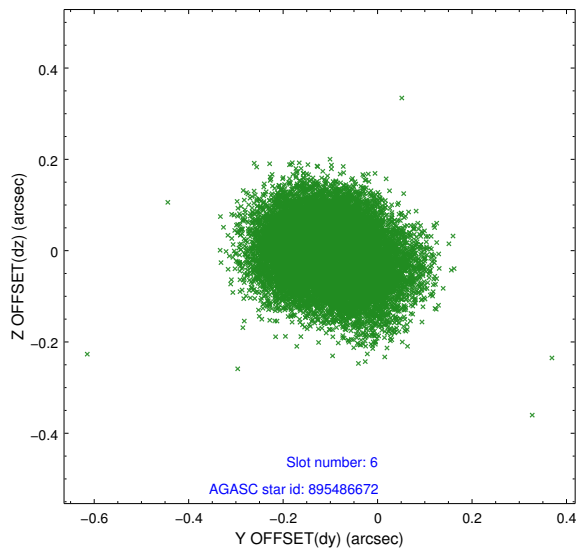
2.4.2 Slot 4



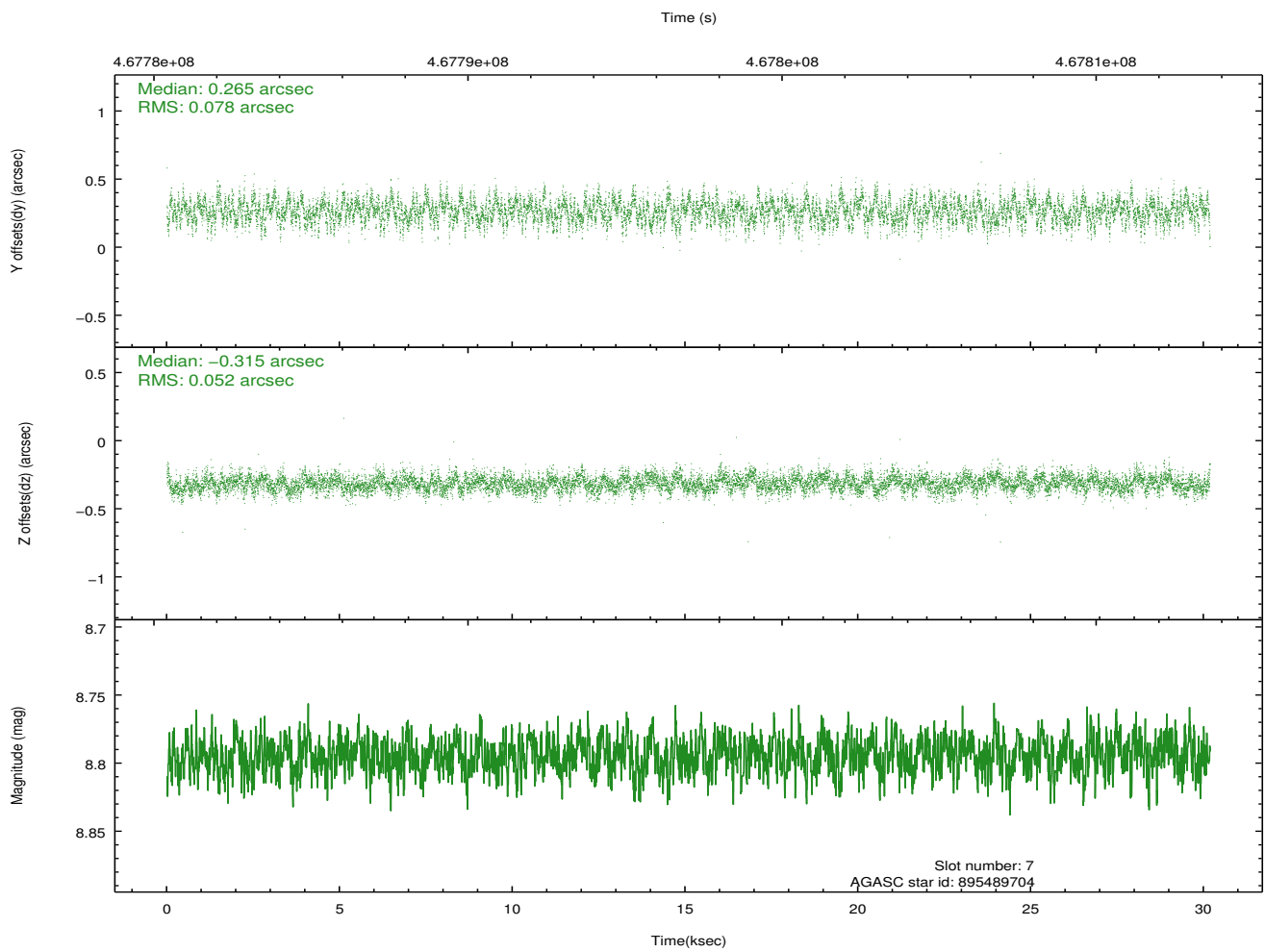
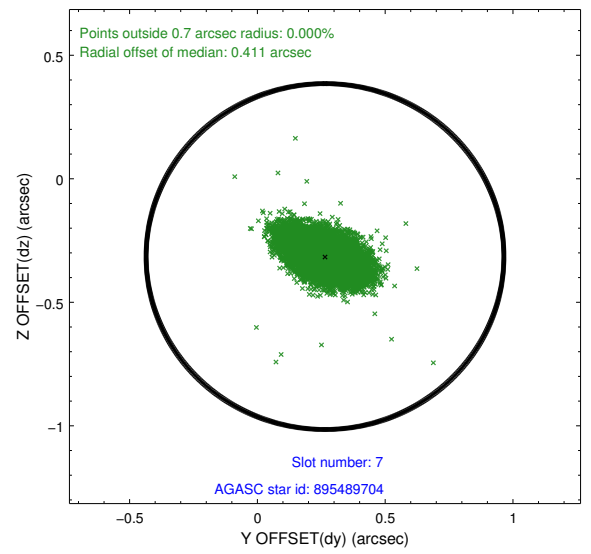
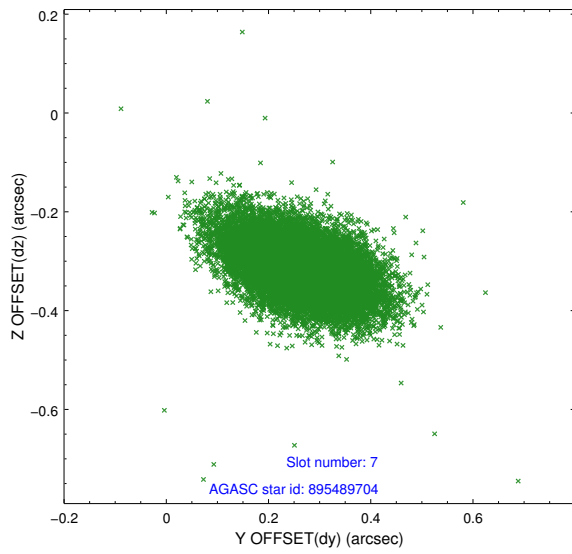
2.4.3 Slot 5



2.4.4 Slot 6

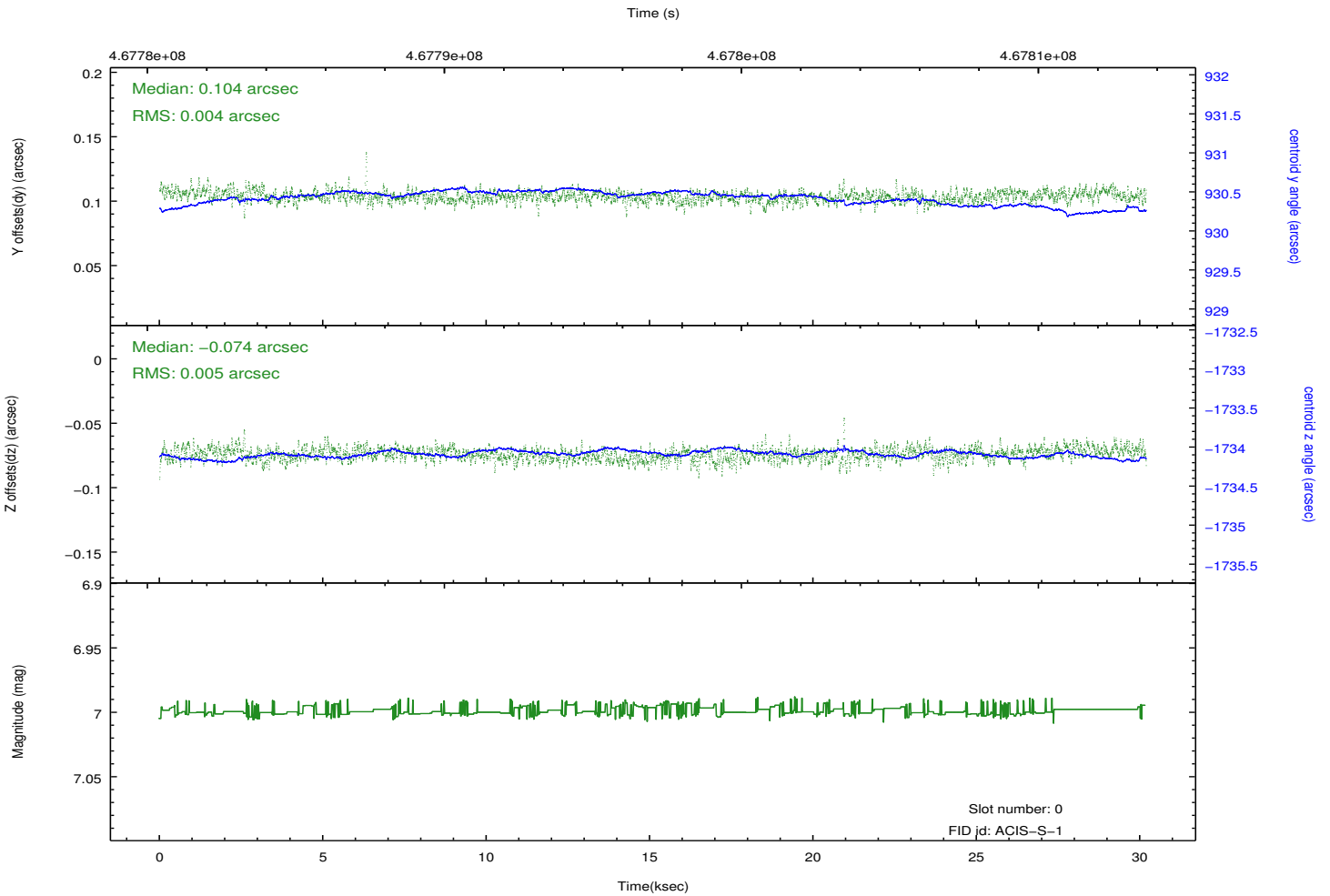
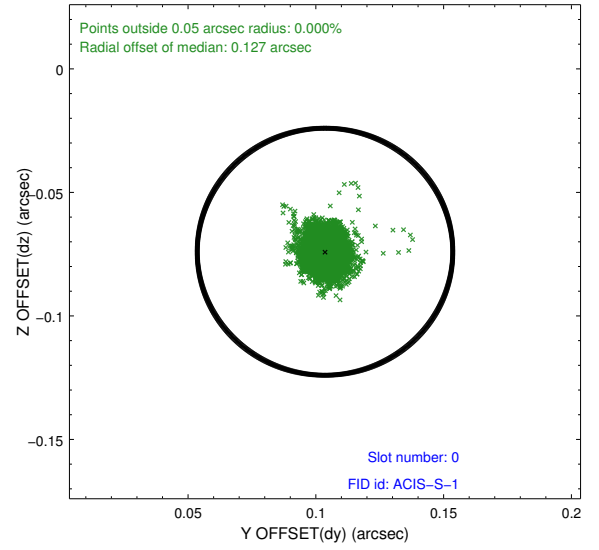
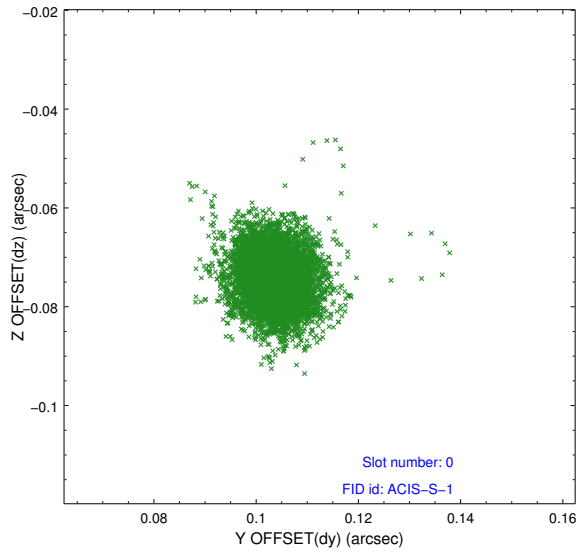


2.4.5 Slot 7

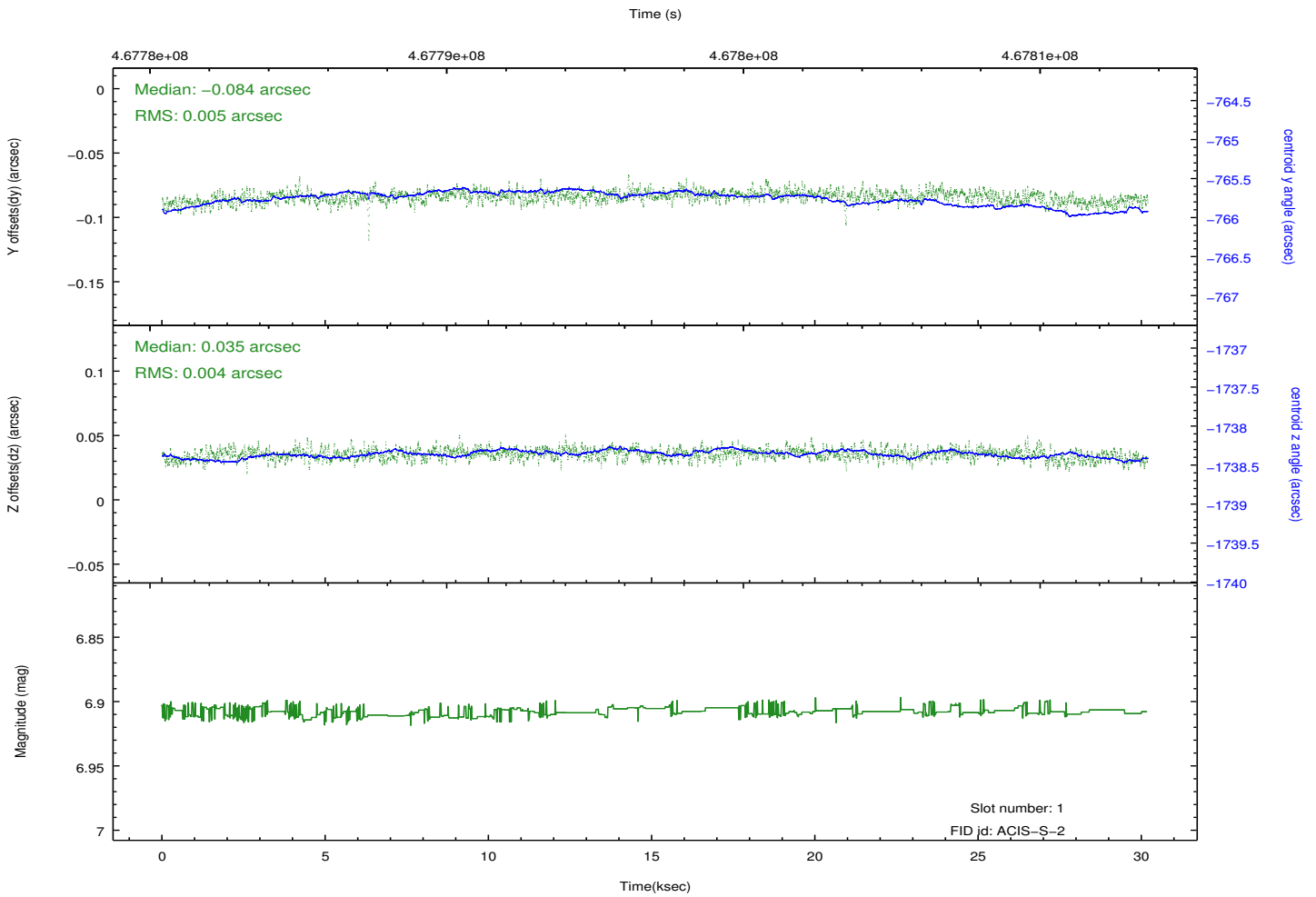
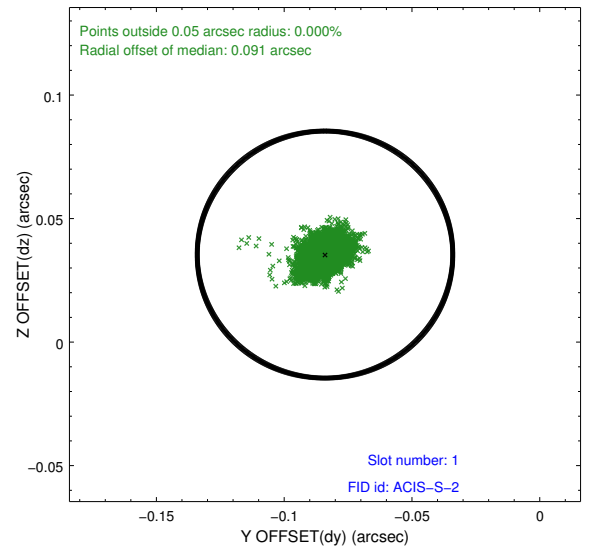
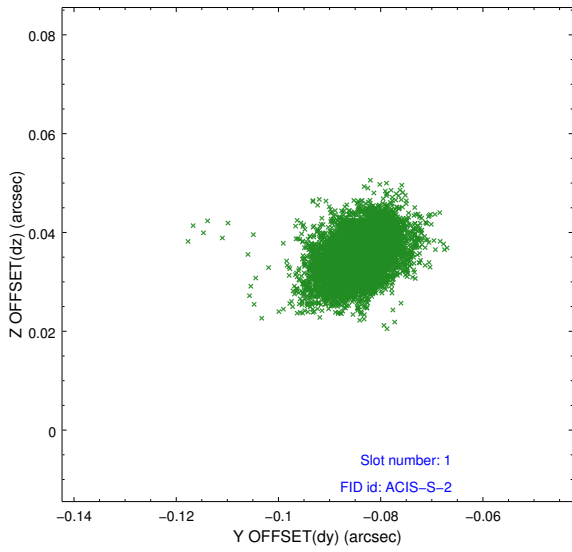


2.5 FID Slots

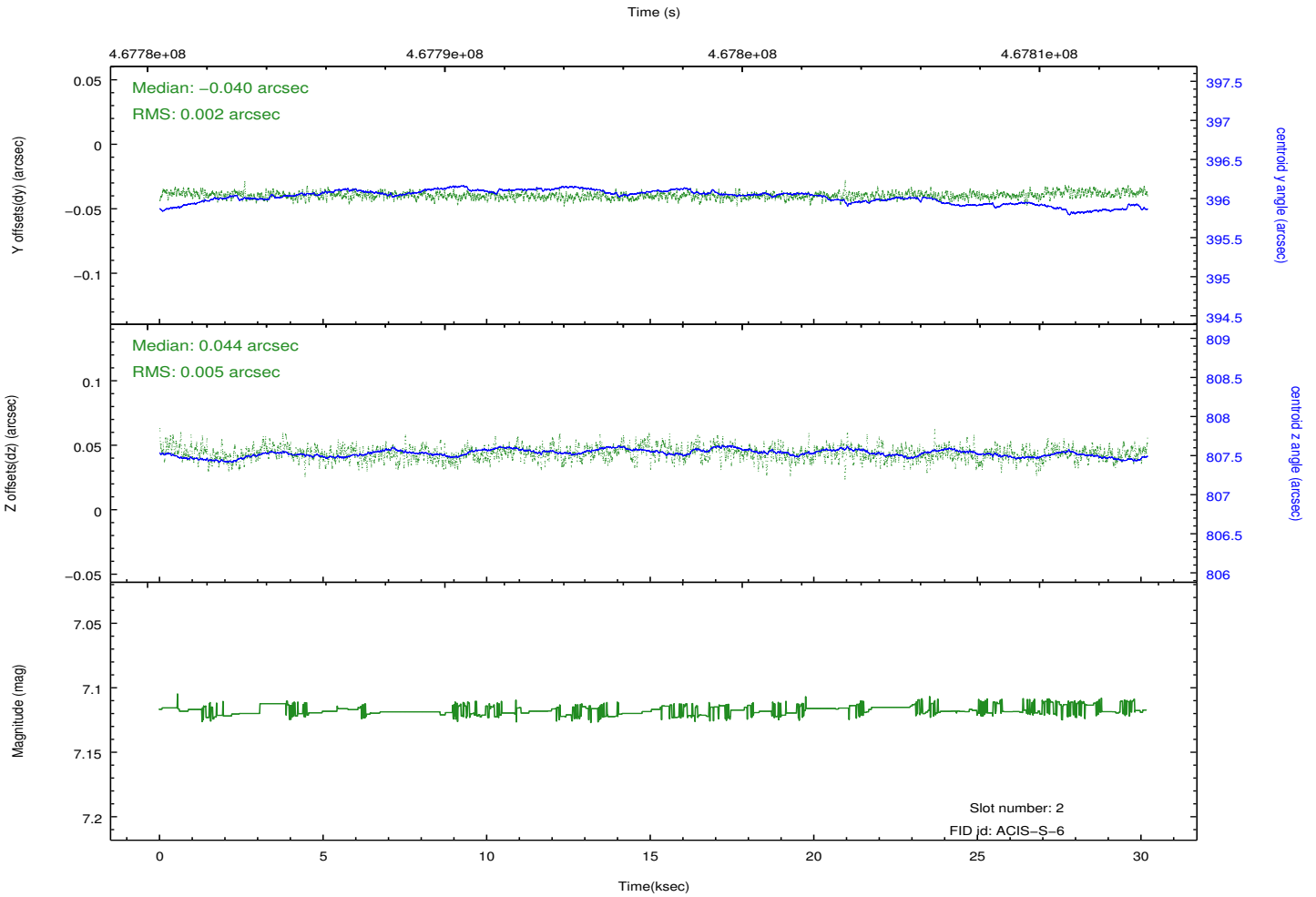
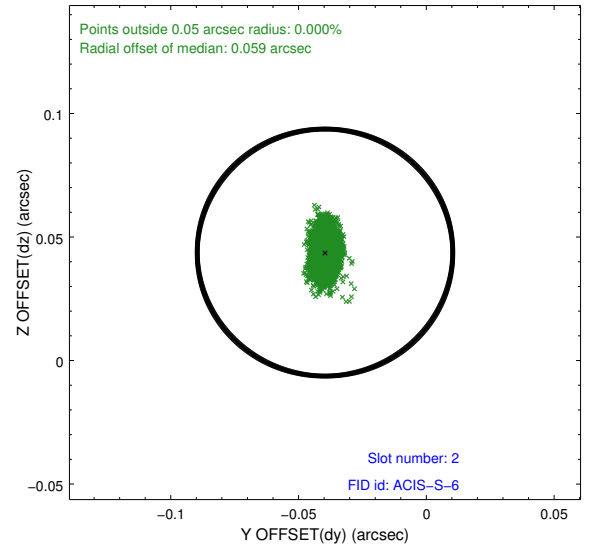
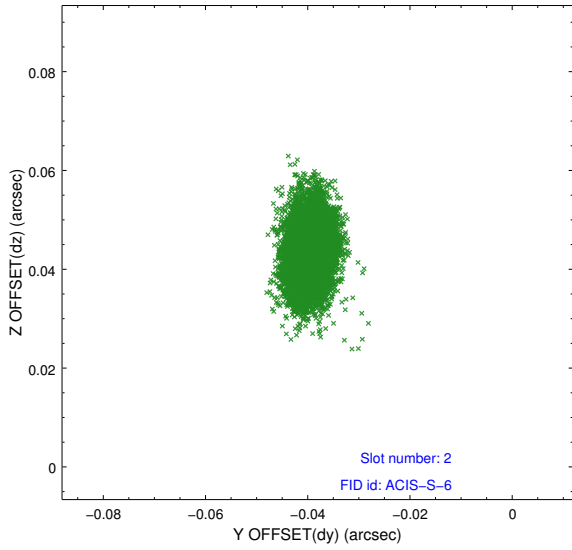
2.5.1 Slot 0



2.5.2 Slot 1



2.5.3 Slot 2



A Summary

A.1 Status

V&V Scientist	Beth Sundheim
V&V Date (YYYY-MM-DD)	2014.12.02
V&V Edition	1
V&V Disposition and Status	OK
V&V Charge Time	30.064000448048

A.2 Comments

These data have been reprocessed with new aspect alignment calibration files that correct small mean offsets (up to 0.4 arcsecs) and improve overall astrometric accuracy. The new calibration was determined using data from the time period being reprocessed and was performed using cross-correlation of X-ray sources with radio and optical counterparts.