

V&V Reference Report

L2 ASCDS Version : 8.5.1.1

Observation 15565 - L2 Version 2
Chandra X-Ray Center

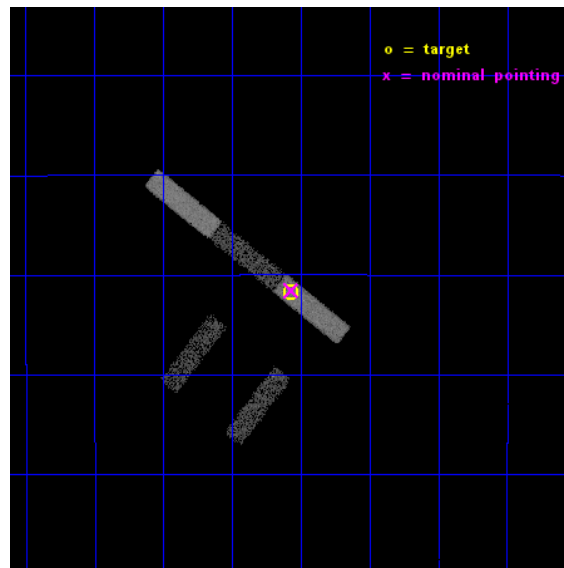
L2 Processing Date : Dec 1 2014

Contents

1	Front	2
2	OBI	3
2.1	OBI	3
2.1.1	Images	3
2.1.2	Bias	3
2.1.3	Parameters	4
2.1.4	Events	4
2.2	Compared Parameters	5
2.3	Aspect	6
2.4	Star Slots	9
2.4.1	Slot 3	9
2.4.2	Slot 4	10
2.4.3	Slot 5	11
2.4.4	Slot 6	12
2.4.5	Slot 7	13
2.5	FID Slots	14
2.5.1	Slot 0	14
2.5.2	Slot 1	15
2.5.3	Slot 2	16
A	Summary	17
A.1	Status	17
A.2	Comments	17

1 Front

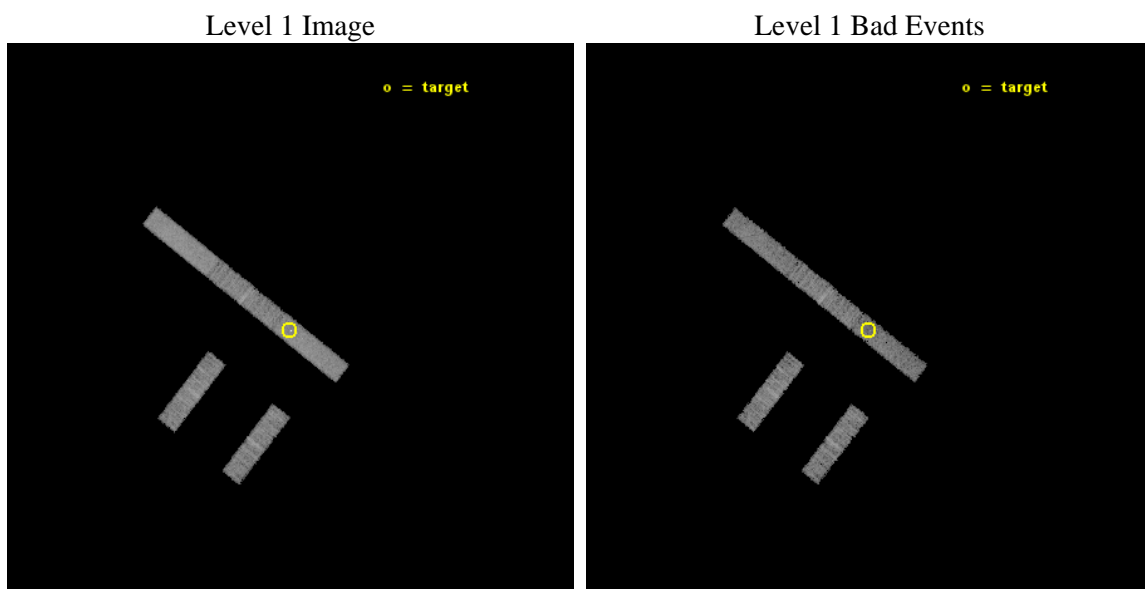
seq_num	200832	Sequence number
obs_id	15565	Observation id
title	Characterizing the X-ray & Stellar Wind Environment in the ~1 Gyr Late Heavy Bombardment System Eta Corvi	Proposal title
observer	Dr. Carey Lisse	Principal investigator
object	HD 109085	Source name
dtcycle	0	
cycle	P	events from which exps? Prim/Second/Both
ra_targ	188.0175	Observer's specified target RA [deg]
dec_targ	-16.196	Observer's specified target Dec [deg]
ra_nom	188.01714274923	Nominal RA [deg]
dec_nom	-16.192960177982	Nominal Dec [deg]
roll_nom	38.156537488702	Nominal Roll [deg]
revision	2	Processing version of data
ontime	10073.0	Sum of GTIs [s]
livetime	9675.9010220549	Livetime [s]
ontime2	10073.0	Sum of GTIs [s]
ontime3	10071.958959937	Sum of GTIs [s]
ontime5	10073.0	Sum of GTIs [s]
ontime6	10073.0	Sum of GTIs [s]
ontime7	10073.0	Sum of GTIs [s]
l2events	26266	Number of level 2 events



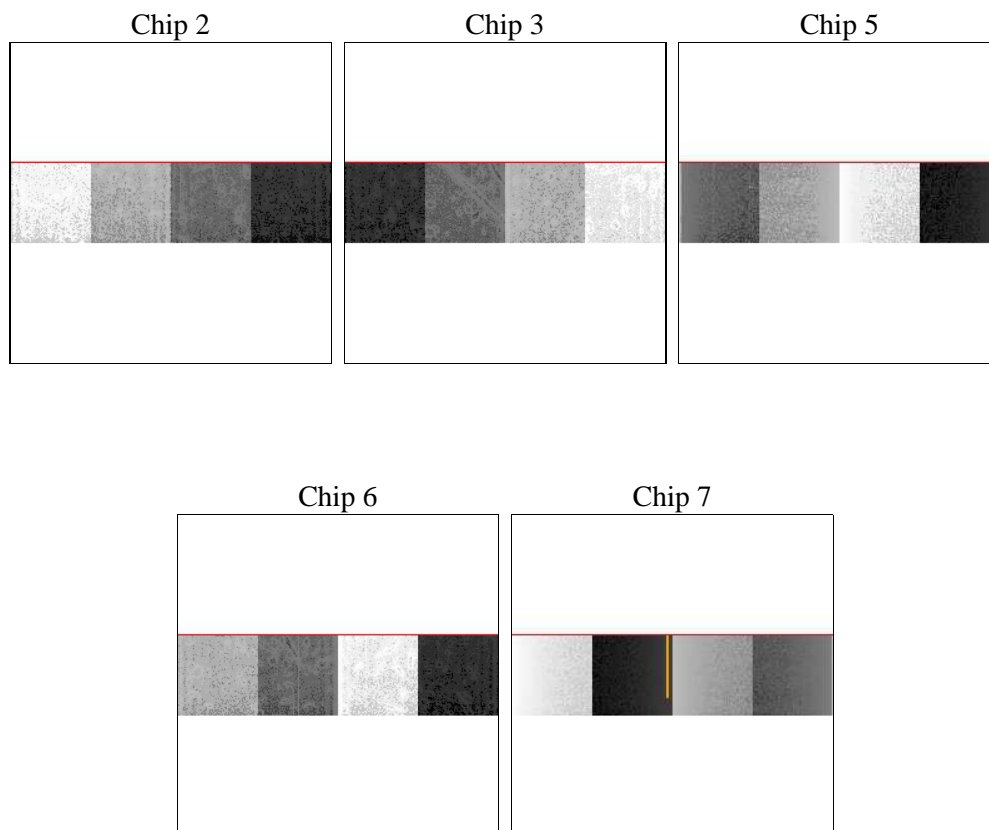
2 OBI

2.1 OBI

2.1.1 Images



2.1.2 Bias



2.1.3 Parameters

obi_num	1	Obi number	sched_exp_time	10000.000000	[s] Scheduled observation exposure time
ascdsver	10.3	Processing system revision	ontime	10073.0	Sum of GTIs [s]
caldsver	4.6.4	 	ontime2	10073.0	Sum of GTIs [s]
date	2014-12-02T00:28:59	Date and time of file creation	ontime3	10071.958959937	Sum of GTIs [s]
revision	2	Processing version of data	ontime5	10073.0	Sum of GTIs [s]
			ontime6	10073.0	Sum of GTIs [s]
			ontime7	10073.0	Sum of GTIs [s]
			l1events	96105	Number of level 1 events

2.1.4 Events

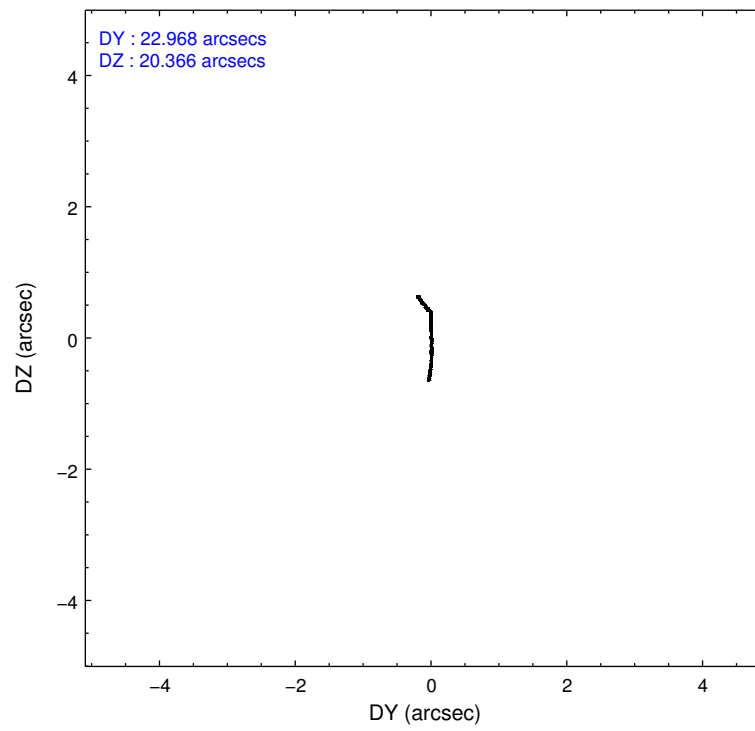
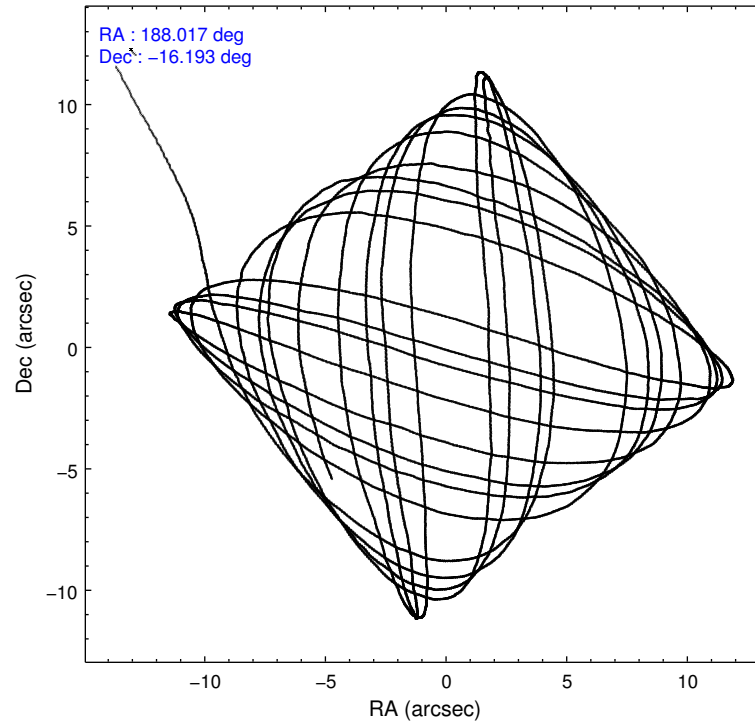
	ccd 2	ccd 3	ccd 5	ccd 6	ccd 7
level 1 events	17487	16038	23929	17048	21603
rejected events	15649	14162	12520	15013	10872
rejected %	89%	88%	52%	88%	50%

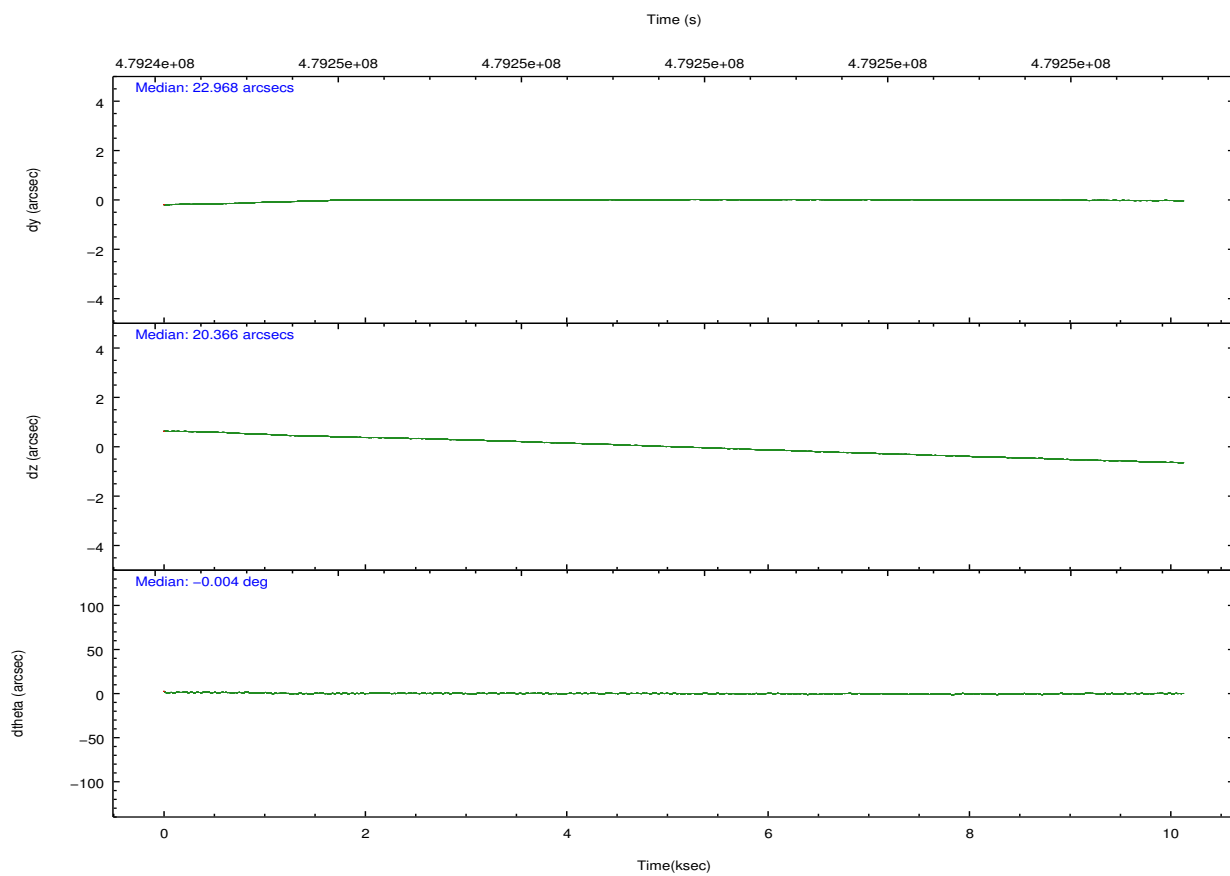
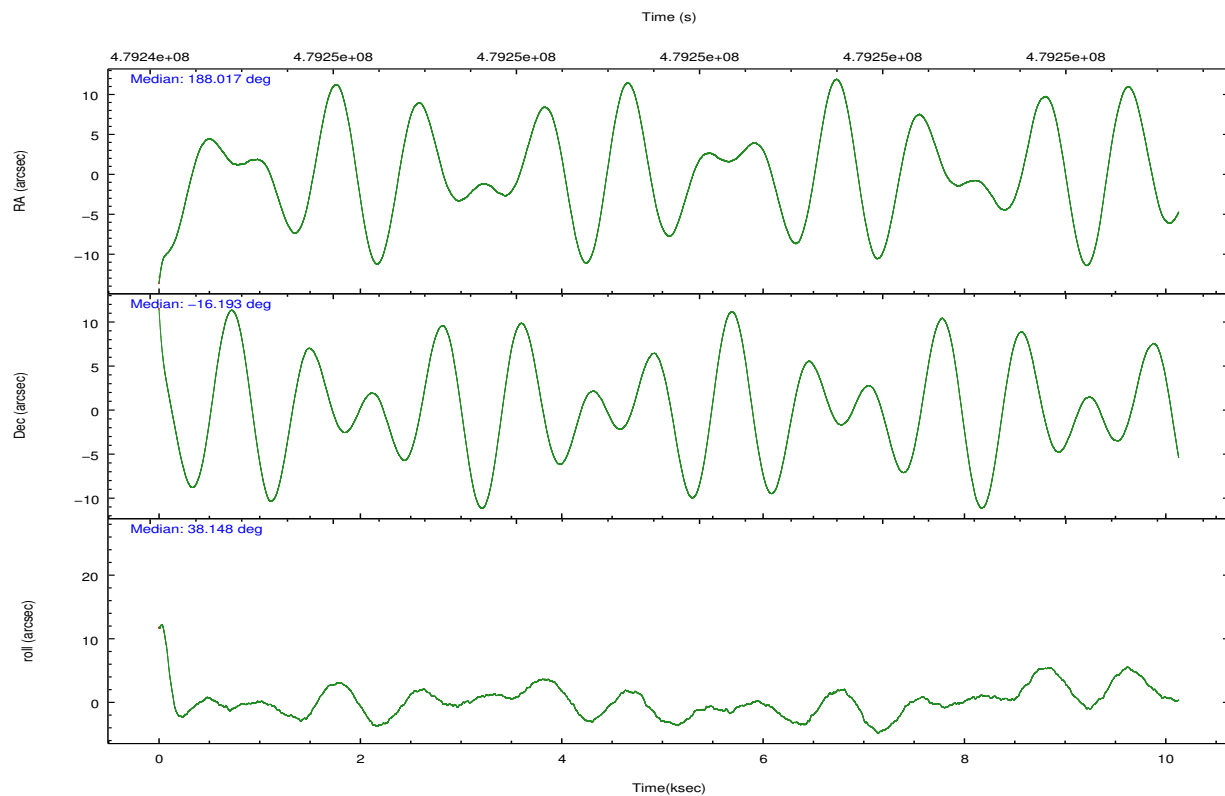
	ccd 2	ccd 3	ccd 5	ccd 6	ccd 7
grade 0 events	566	588	974	624	1511
	3%	3%	4%	3%	6%
grade 1 events	4	7	35	8	39
	0%	0%	0%	0%	0%
grade 2 events	410	376	3304	388	2290
	2%	2%	13%	2%	10%
grade 3 events	252	281	688	295	1134
	1%	1%	2%	1%	5%
grade 4 events	269	254	663	292	1108
	1%	1%	2%	1%	5%
grade 5 events	554	706	2141	771	2148
	3%	4%	8%	4%	9%
grade 6 events	342	377	5780	437	4689
	1%	2%	24%	2%	21%
grade 7 events	15090	13449	10344	14233	8684
	86%	83%	43%	83%	40%

2.2 Compared Parameters

Parameter	Planned	Actual	Parameter	Planned	Actual
Instrument	ACIS	ACIS	Obspar format version number	7	7
Detector	ACIS-23567	ACIS-23567	Obspar file type	PREDICTED	ACTUAL
Grating	NONE	NONE	Obspar update status	NONE	UPDATED
Data mode	VFAINT	VFAINT	Number of optional ACIS chips dropped	0	0
Observation mode	POINTING	POINTING	On-chip summing requested	N	N
[deg] Pointing RA	188.006957	188.0171427492251	Subarray requested	CUSTOM	1/4
[deg] Pointing Dec	-16.218498	-16.19296017798233	Subarray start row	385	385
[deg] Pointing Roll	37.997059	38.15653748870232	Subarray row count	256	256
[mm] SIM focus pos	-0.684267	-0.6828225247311905	Alternating exposures requested	N	N
[mm] SIM defocus	0	0.001444936568705701	[s] Primary exposure time	0.000000	1
[mm] SIM translation stage pos	-190.132523	-190.1425803651734			
[mm] SIM translation stage offset	0	0.01005778216563158			
[s] Observation start time (MET)	479244736.184000	479243532.18258			
Observation start date	2013-03-09T19:31:09	2013-03-09T19:12:12			
[s] Observation end time (MET)	479254736.184000	479256093.04576			
Observation end date	2013-03-09T22:17:49	2013-03-09T22:41:33			
Read mode	TIMED	TIMED			

2.3 Aspect



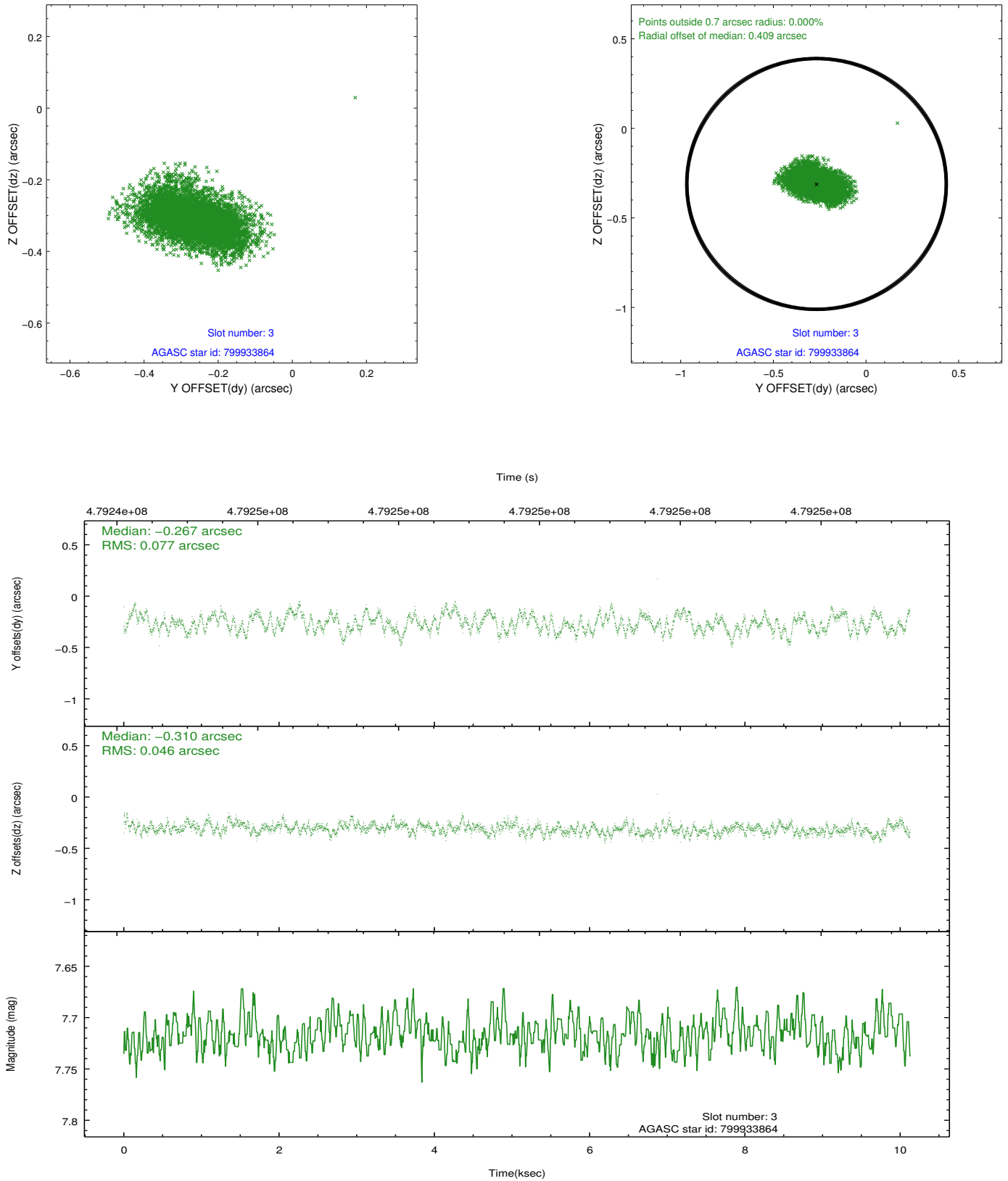


Slot Statistics

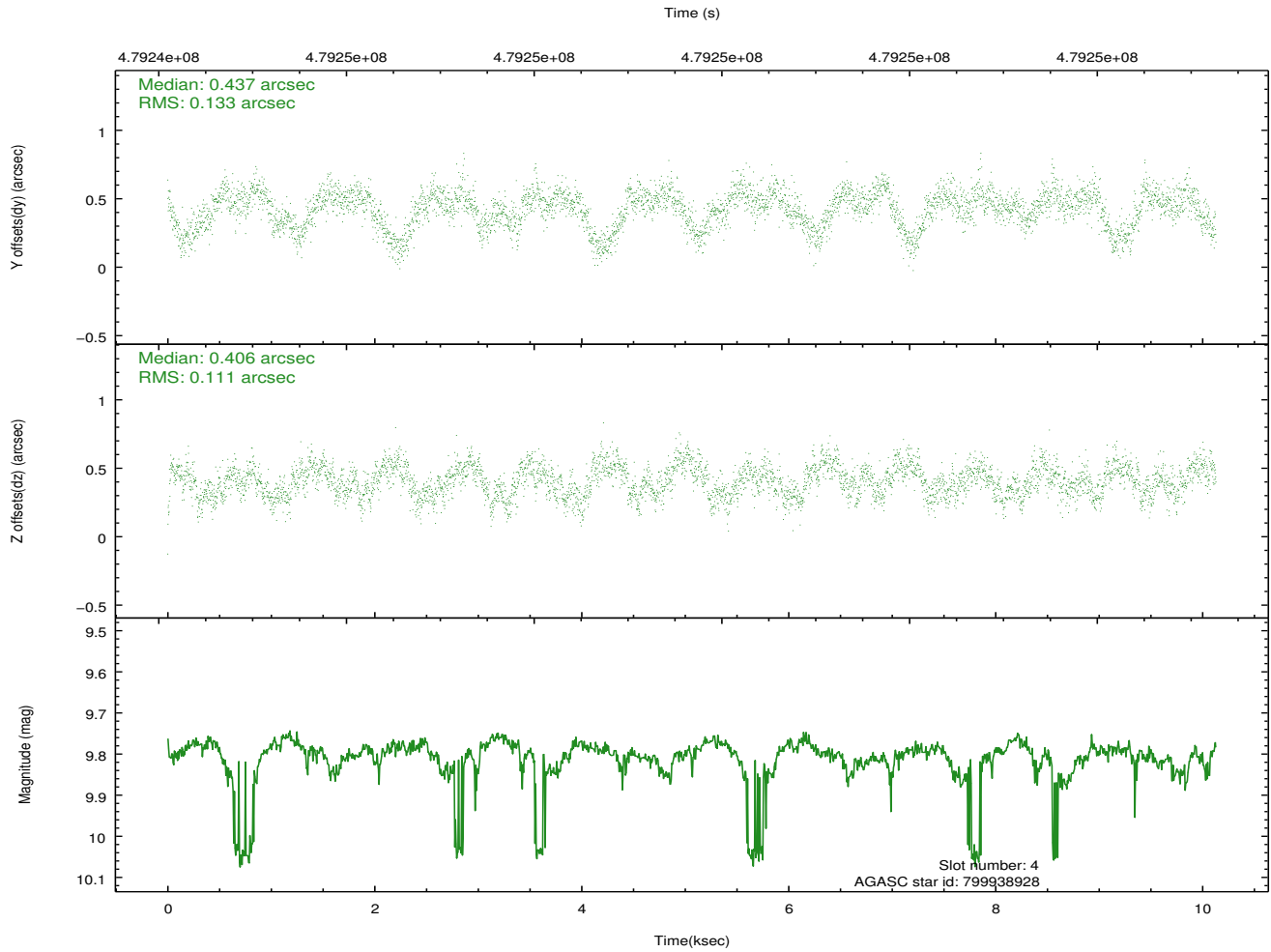
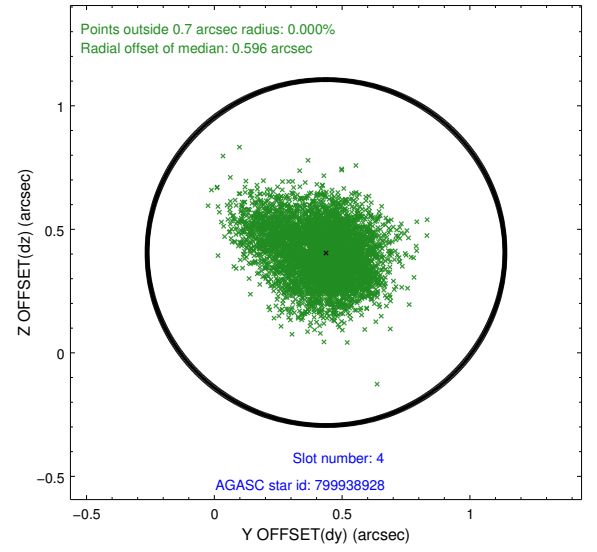
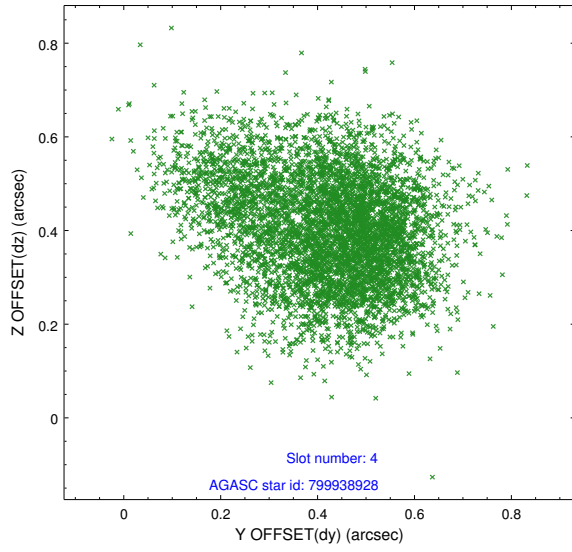
slot	status	used	id	mag	n_pts	med_dy	med_dz	dr1	dr2	ra	dec	mean_y	mean_z
0	FID		ACIS-S-2	6.92	2471	-0.119	-0.006	0.009	0.016	0.000000	0.000000	-776.24	-1741.84
1	FID		ACIS-S-4	7.01	2471	0.281	0.059	0.007	0.014	0.000000	0.000000	2137.18	166.17
2	FID		ACIS-S-5	7.03	2471	-0.193	-0.044	0.008	0.014	0.000000	0.000000	-1828.50	160.32
3	GUIDE	used	799933864	7.72	4941	-0.267	-0.310	0.097	0.153	187.954729	-15.715631	971.59	1537.09
4	GUIDE	used	799938928	9.80	4913	0.437	0.406	0.183	0.302	187.528541	-16.643478	-2243.39	-190.88
5	GUIDE	used	799942160	8.05	4940	-0.126	0.074	0.095	0.146	188.654146	-16.354391	1457.88	-1763.74
6	GUIDE	used	799942944	7.40	4942	0.056	0.169	0.090	0.146	188.225311	-16.660106	-384.94	-1717.15
7	GUIDE	used	799945248	7.14	4939	-0.077	-0.337	0.071	0.114	187.161966	-16.005620	-1836.30	2398.23

2.4 Star Slots

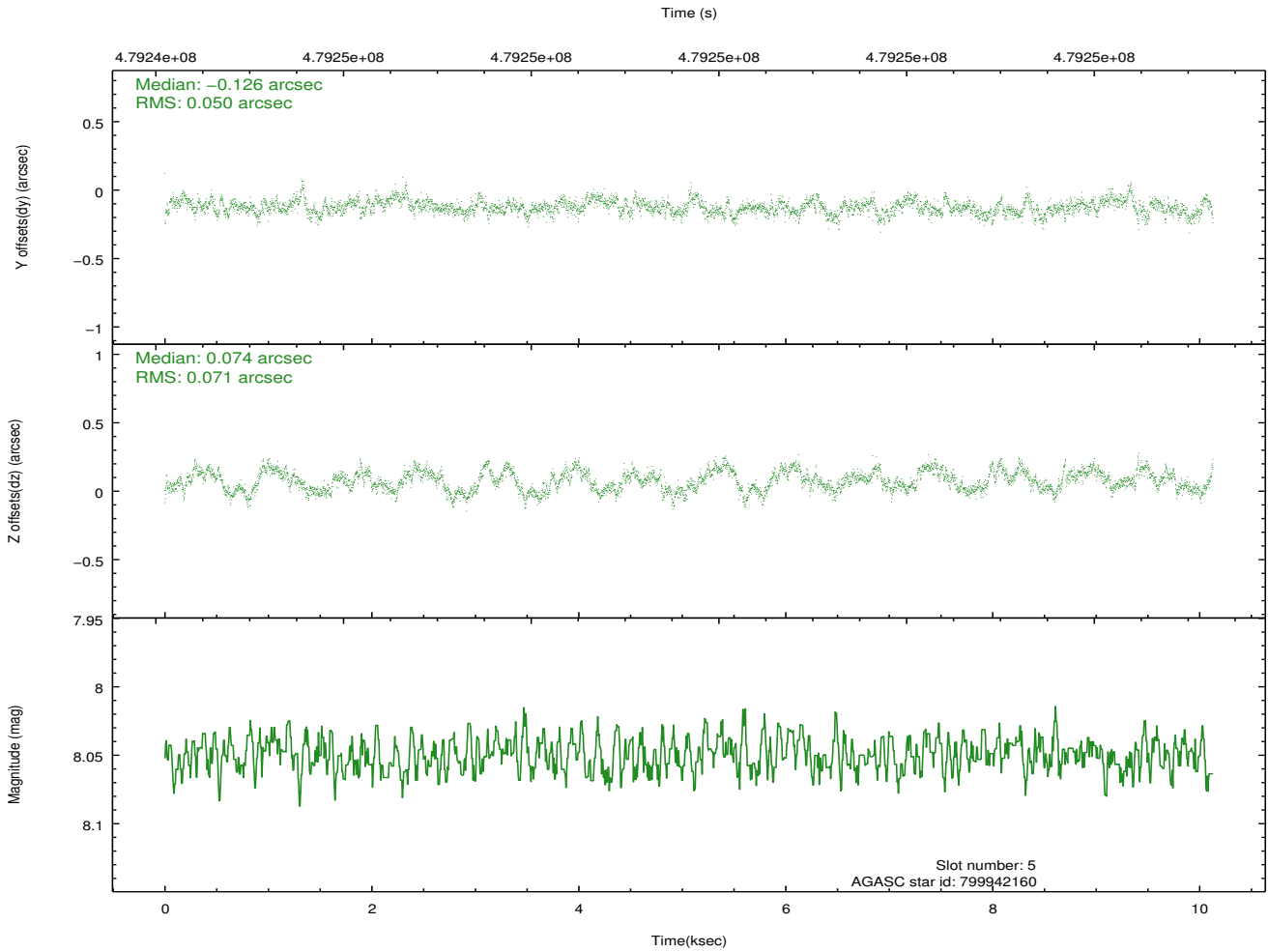
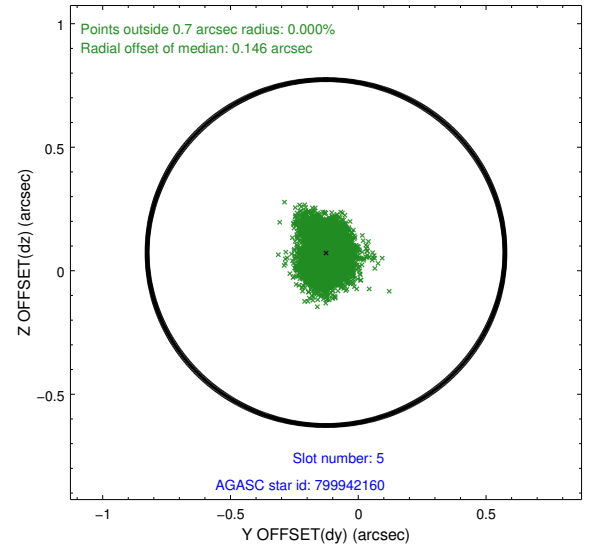
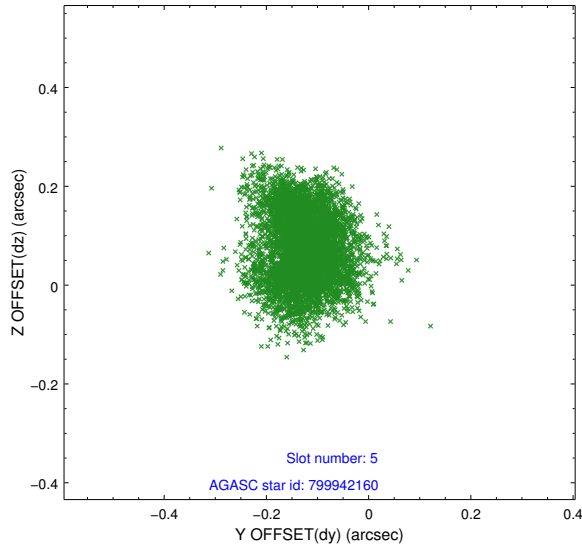
2.4.1 Slot 3



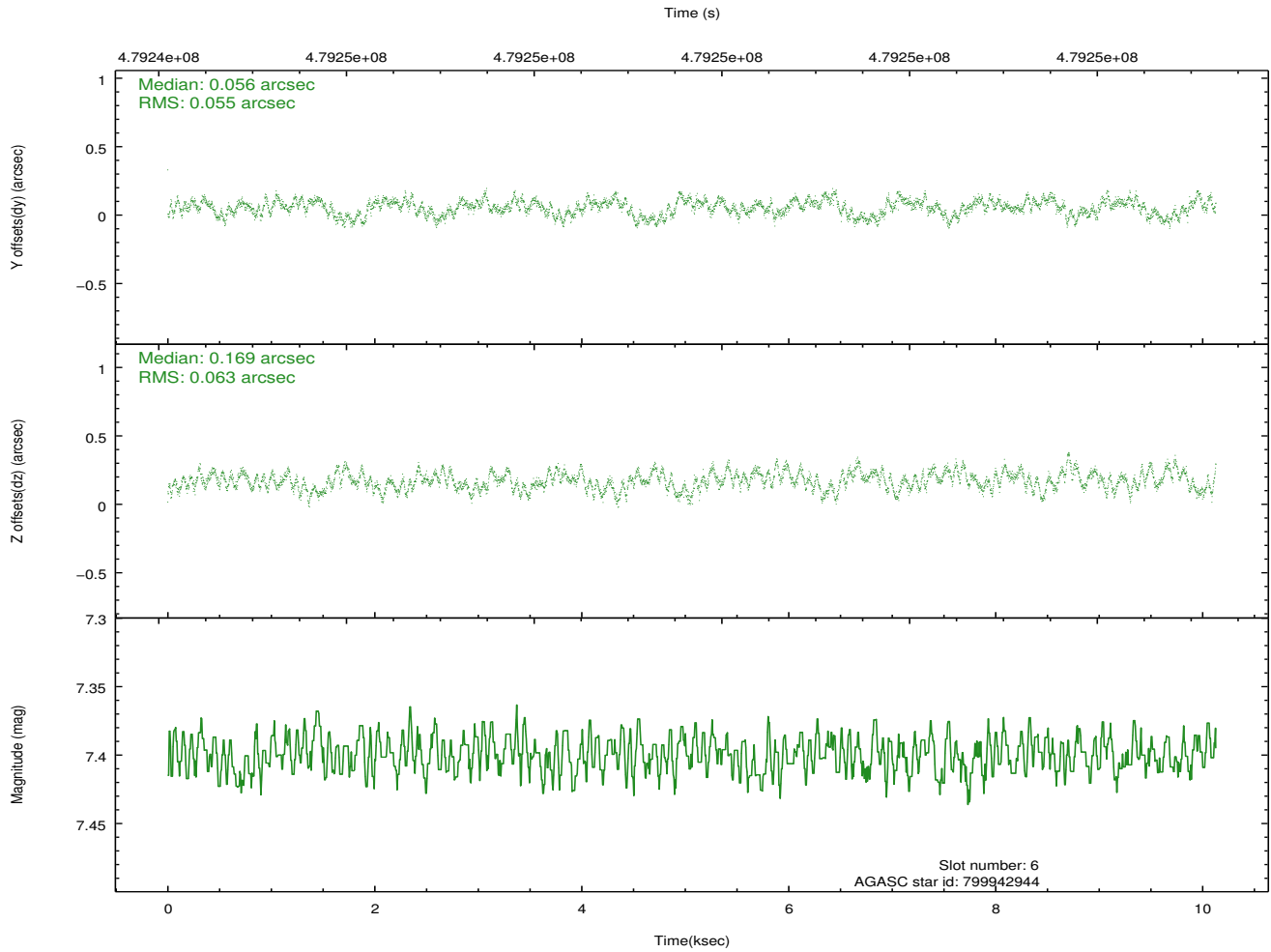
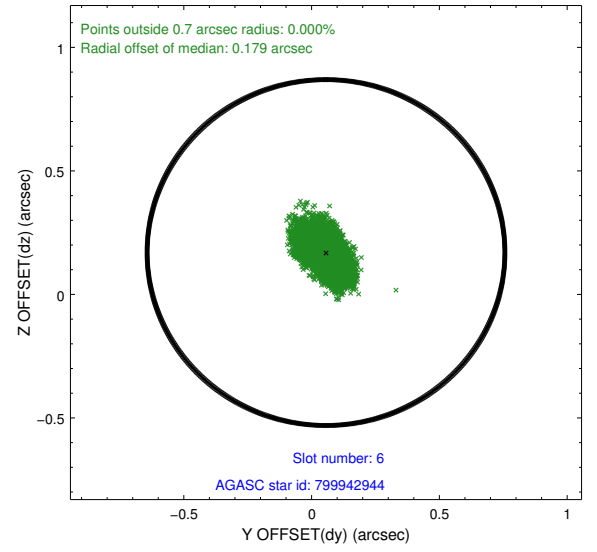
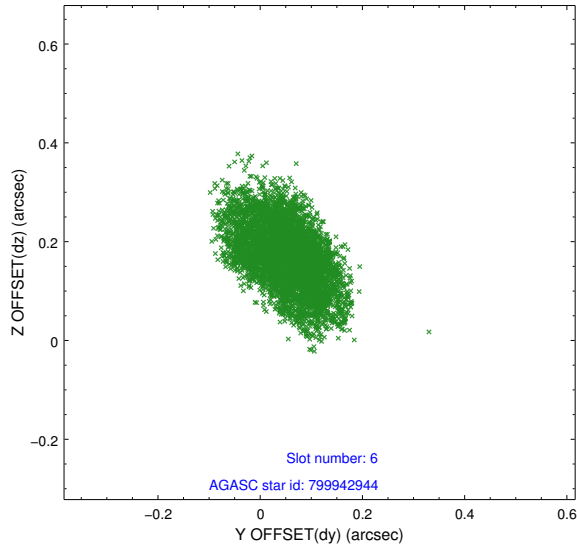
2.4.2 Slot 4



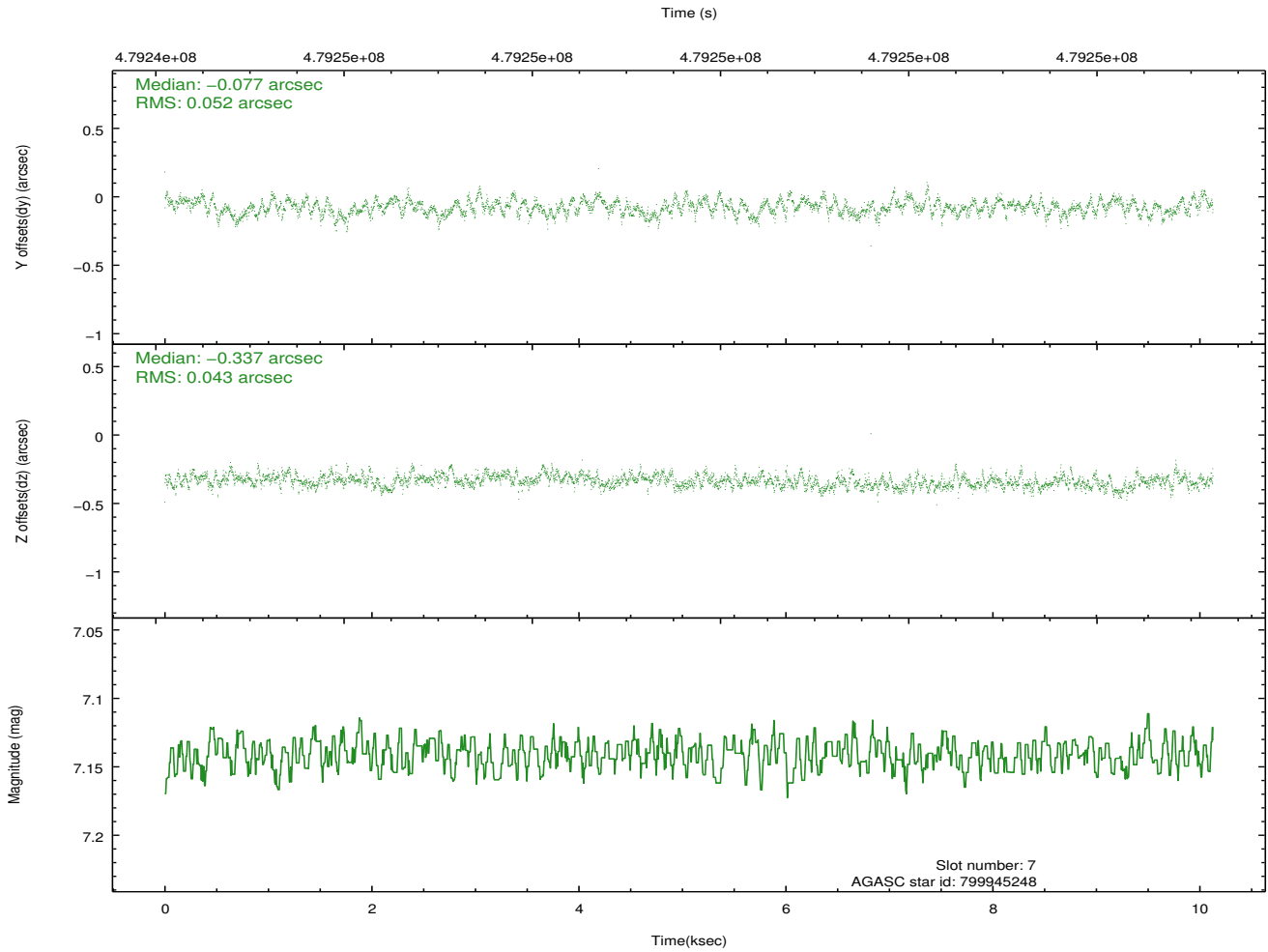
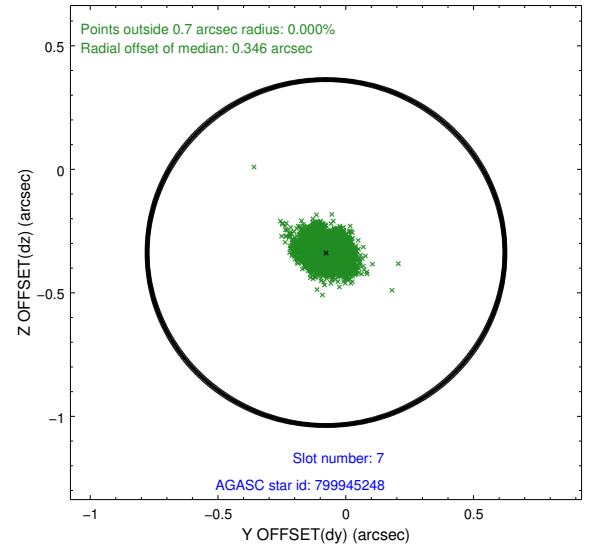
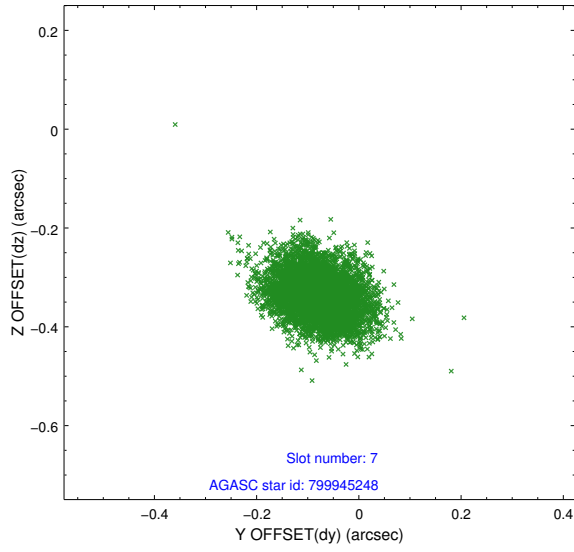
2.4.3 Slot 5



2.4.4 Slot 6

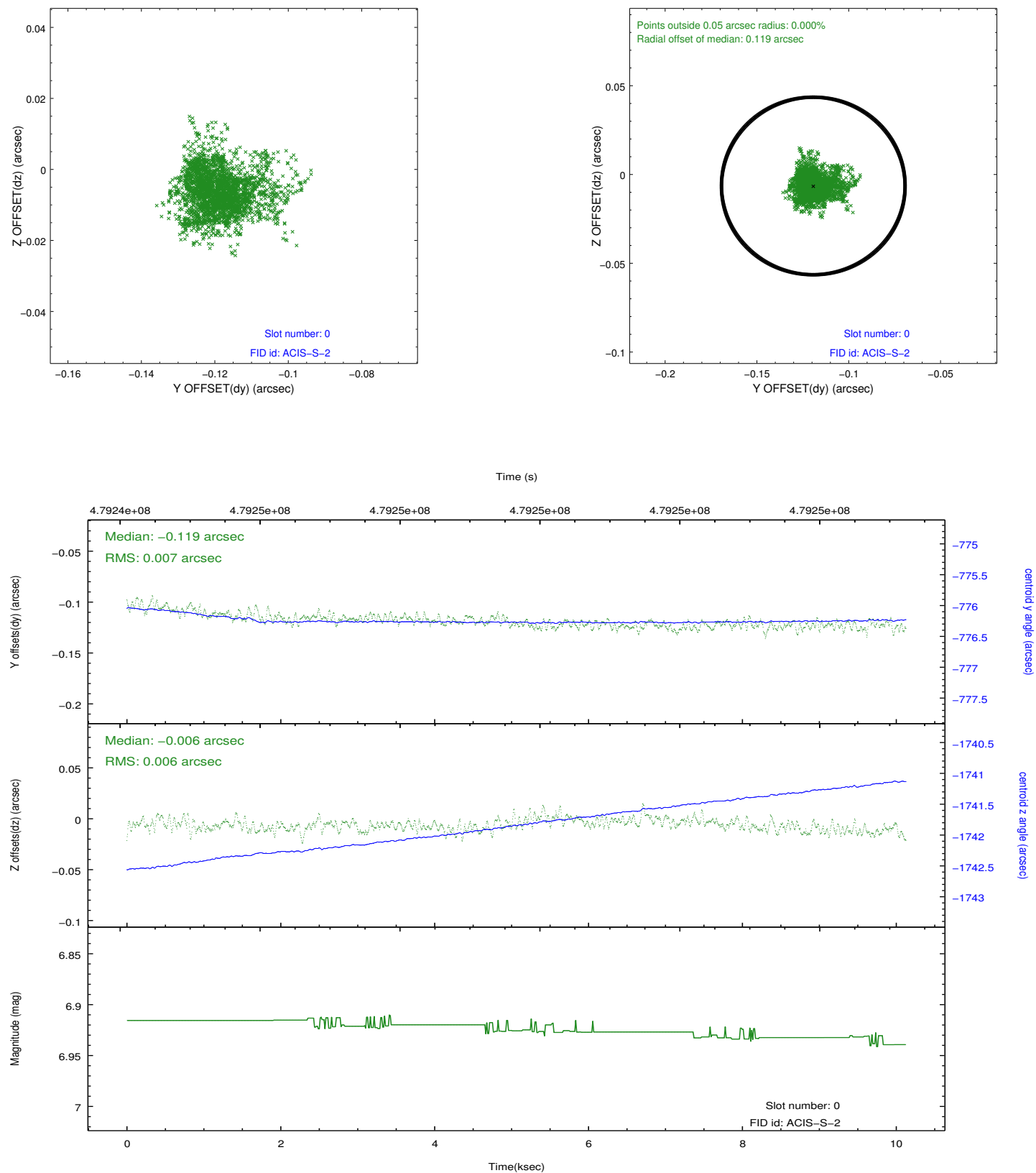


2.4.5 Slot 7

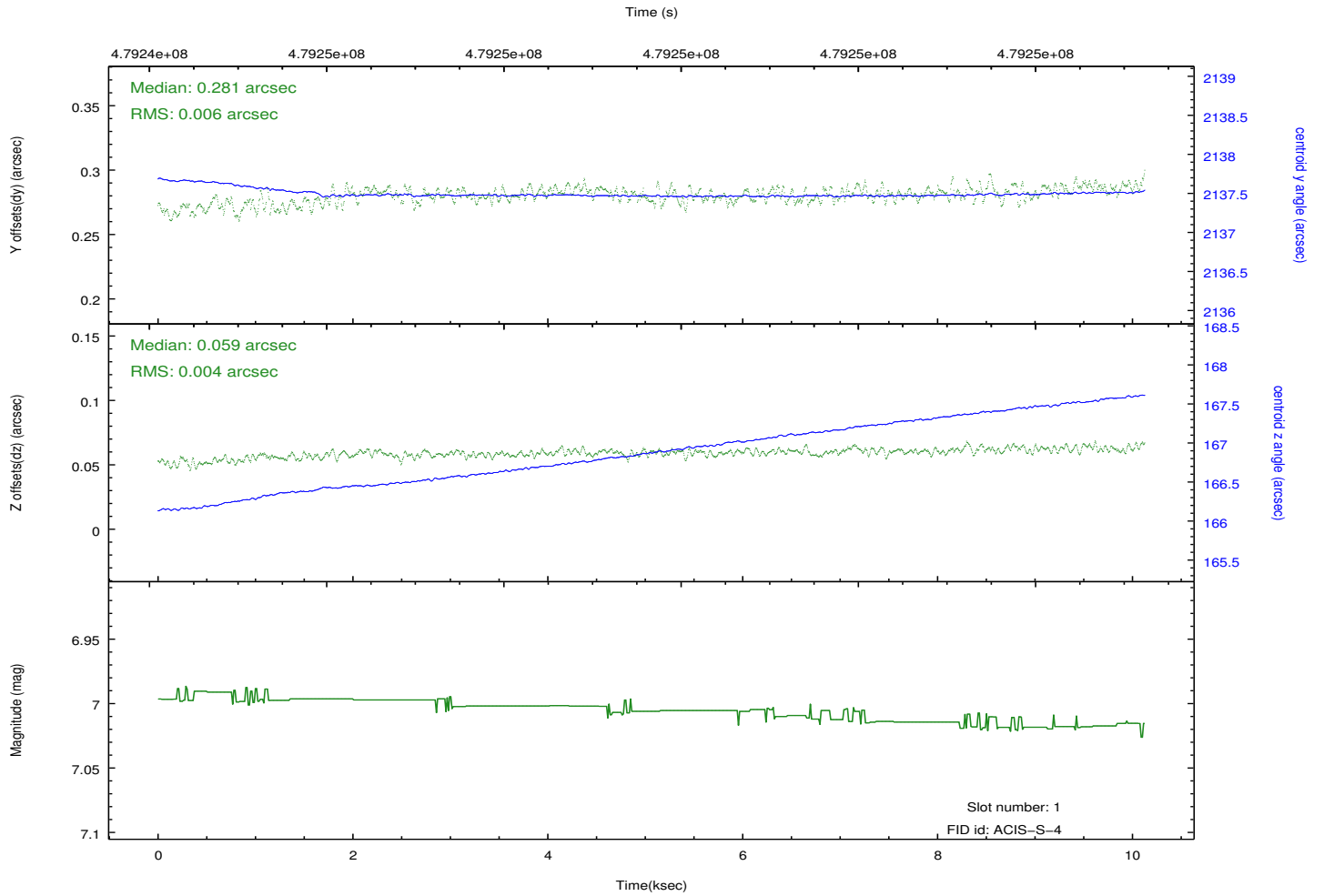
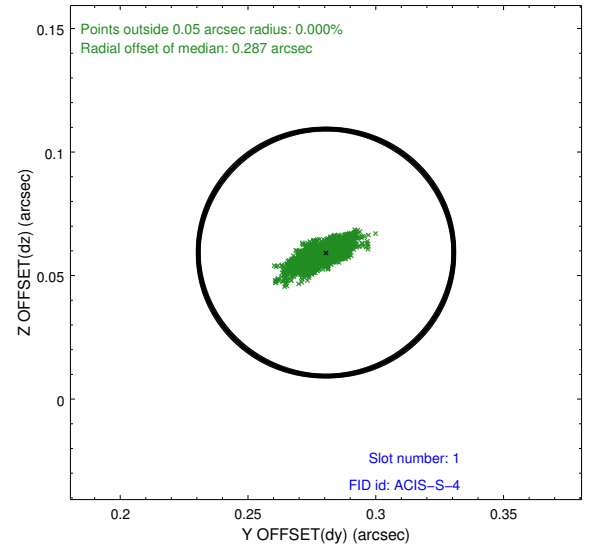
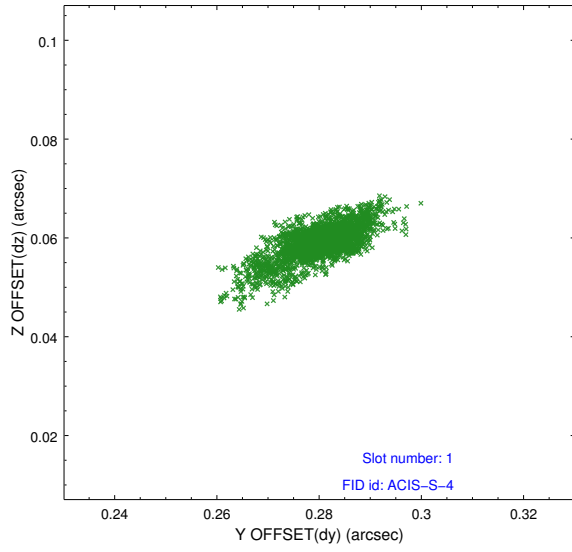


2.5 FID Slots

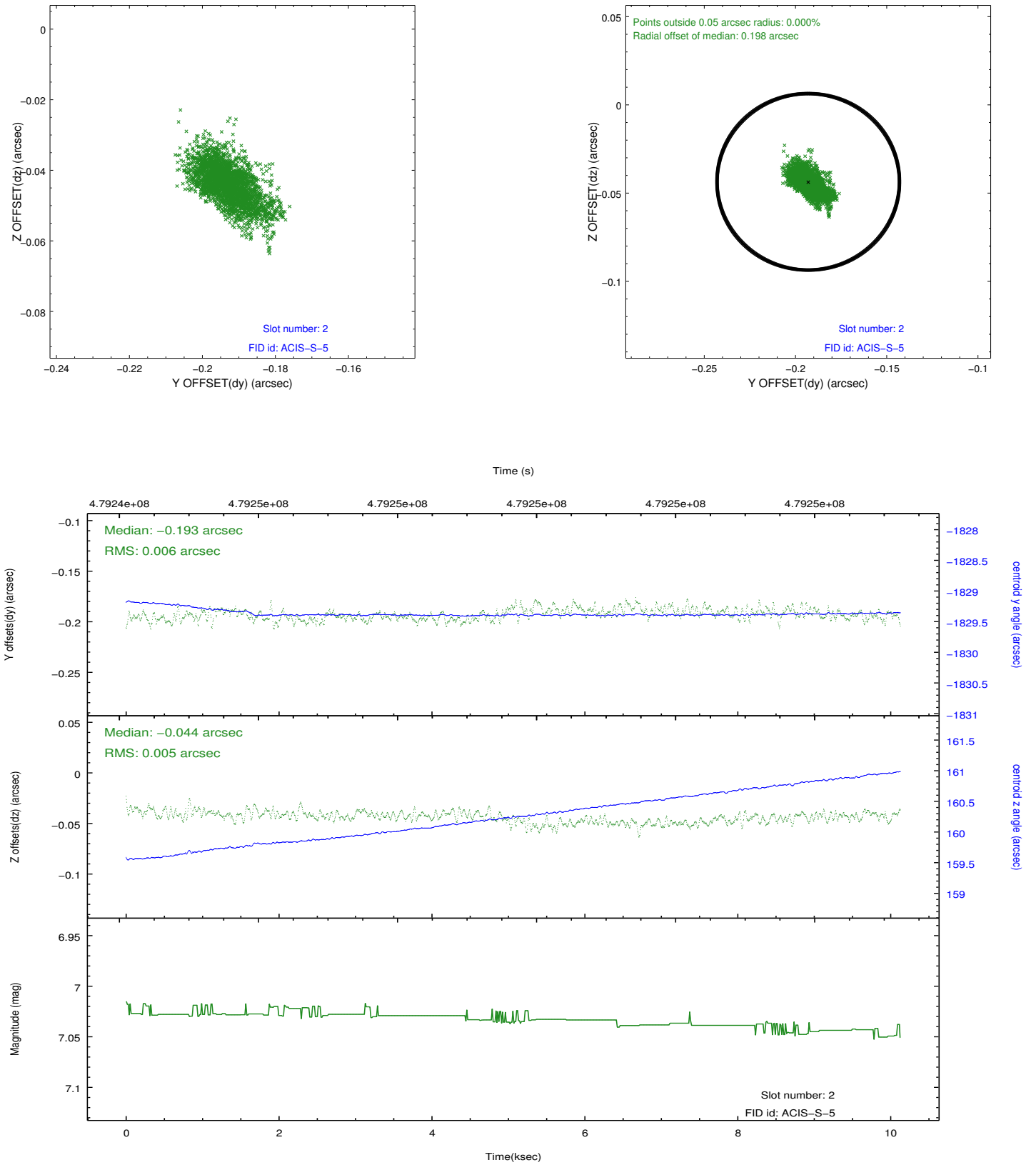
2.5.1 Slot 0



2.5.2 Slot 1



2.5.3 Slot 2



A Summary

A.1 Status

V&V Scientist	Beth Sundheim
V&V Date (YYYY-MM-DD)	2014.12.09
V&V Edition	1
V&V Disposition and Status	OK
V&V Charge Time	10.073

A.2 Comments

These data have been reprocessed with new aspect alignment calibration files that correct small mean offsets (up to 0.4 arcsecs) and improve overall astrometric accuracy. The new calibration was determined using data from the time period being reprocessed and was performed using cross-correlation of X-ray sources with radio and optical counterparts.