

V&V Reference Report

L2 ASCDS Version : 8.4.5

Observation 14048 - L2 Version 2
Chandra X-Ray Center

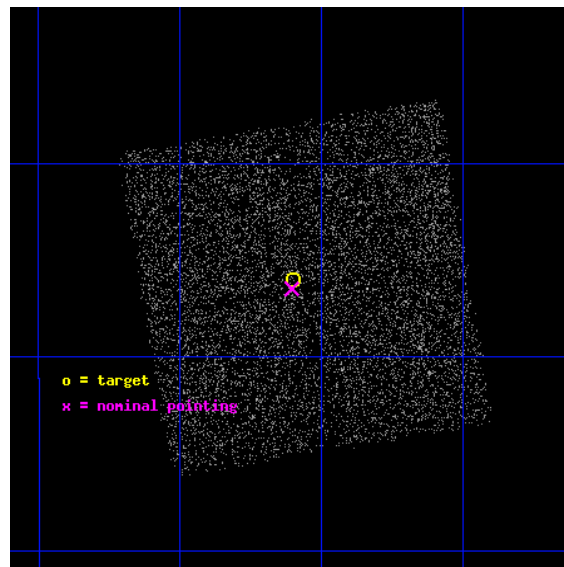
L2 Processing Date : Aug 31 2012

Contents

1	Front	2
2	OBI	3
2.1	OBI	3
2.1.1	Images	3
2.1.2	Bias	3
2.1.3	Parameters	4
2.1.4	Events	4
2.2	Compared Parameters	5
2.3	Aspect	6
2.4	Star Slots	9
2.4.1	Slot 3	9
2.4.2	Slot 4	10
2.4.3	Slot 6	11
2.5	FID Slots	12
2.5.1	Slot 0	12
2.5.2	Slot 1	13
2.5.3	Slot 2	14
A	Summary	15
A.1	Status	15
A.2	Comments	15

1 Front

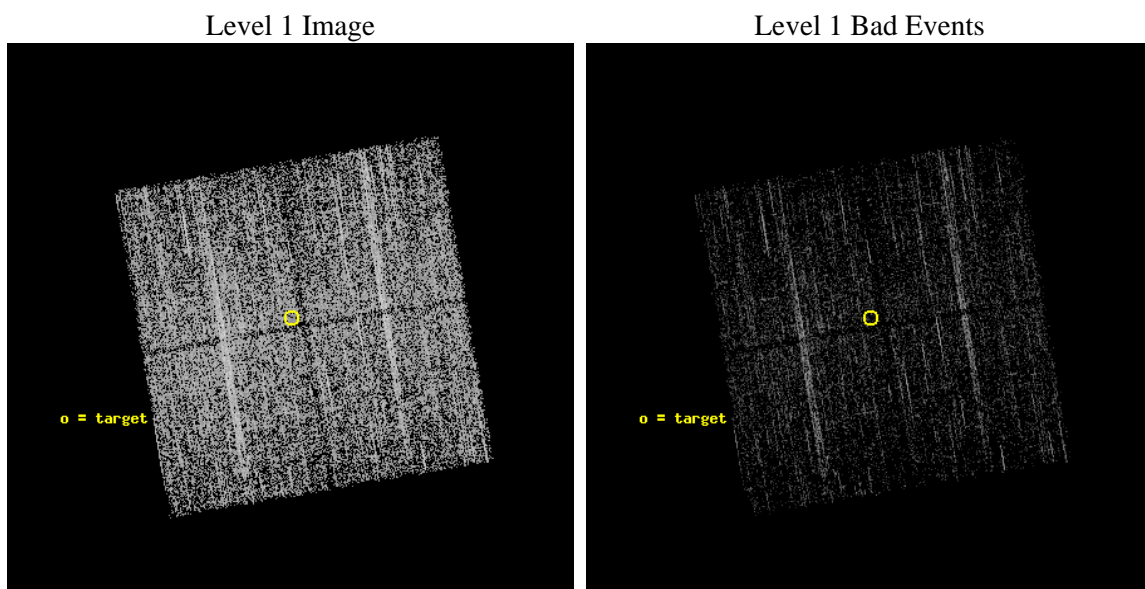
seq_num	901014	Sequence number
obs_id	14048	Observation id
title	BAT, Chandra, NuSTAR and The origin of the Cosmic X-ray Background	
observer	Dr. Marco Ajello	Principal investigator
object	J1623.6-0935	Source name
dtcycle	0	
cycle	P	events from which exps? Prim/Second/Both
ra_targ	245.9	Observer's specified target RA [deg]
dec_targ	-9.6	Observer's specified target Dec [deg]
ra_nom	245.90102546136	Nominal RA [deg]
dec_nom	-9.6079397803278	Nominal Dec [deg]
roll_nom	260.3197306944	Nominal Roll [deg]
revision	2	Processing version of data
ontime	5093.3000391722	Sum of GTIs [s]
livetime	5026.7523245274	Livetime [s]
ontime0	5093.3000391722	Sum of GTIs [s]
ontime1	5093.3000391722	Sum of GTIs [s]
ontime2	5093.3000391722	Sum of GTIs [s]
ontime3	5093.3000391722	Sum of GTIs [s]
l2events	10877	Number of level 2 events



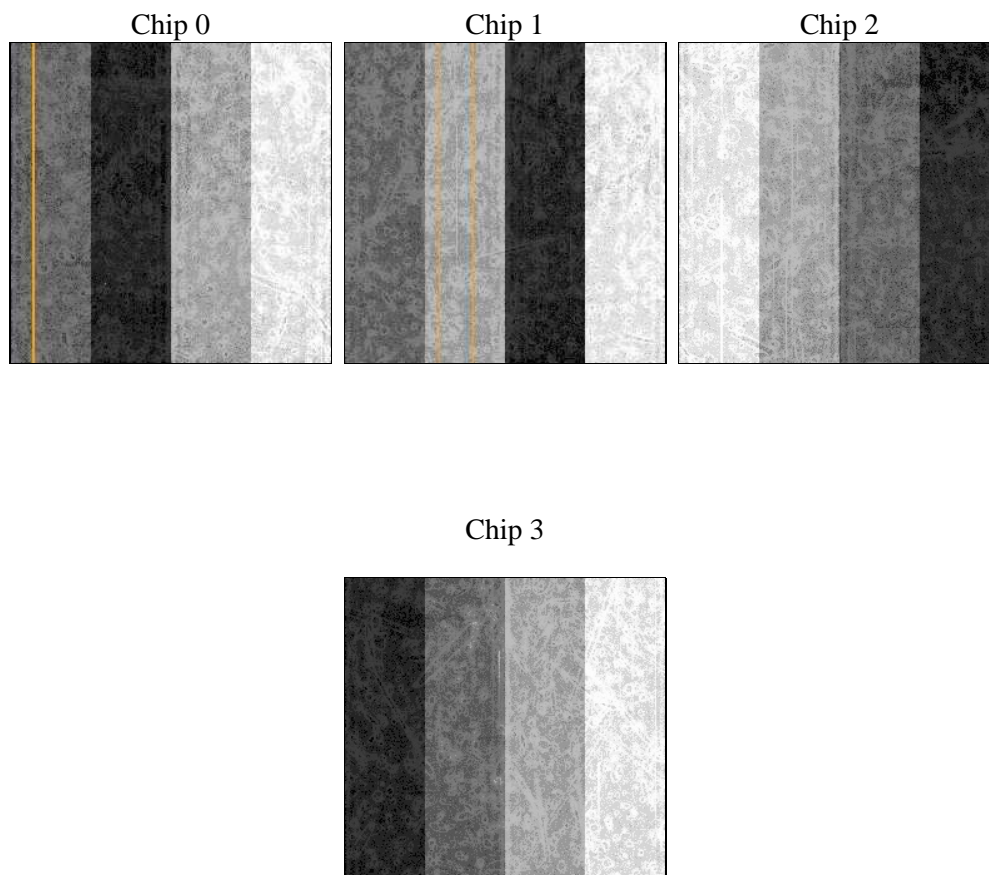
2 OBI

2.1 OBI

2.1.1 Images



2.1.2 Bias



2.1.3 Parameters

obi_num	0	Obi number	sched_exp_time	5000.977000	[s] Scheduled observation exposure time
ascdsver	8.4.5	Processing system revision	ontime	5093.3000391722	Sum of GTIs [s]
caldsver	4.5.1.1	 	ontime0	5093.3000391722	Sum of GTIs [s]
date	2012-08-31T13:34:54	Date and time of file creation	ontime1	5093.3000391722	Sum of GTIs [s]
revision	2	Processing version of data	ontime2	5093.3000391722	Sum of GTIs [s]
			ontime3	5093.3000391722	Sum of GTIs [s]
			l1events	97342	Number of level 1 events

2.1.4 Events

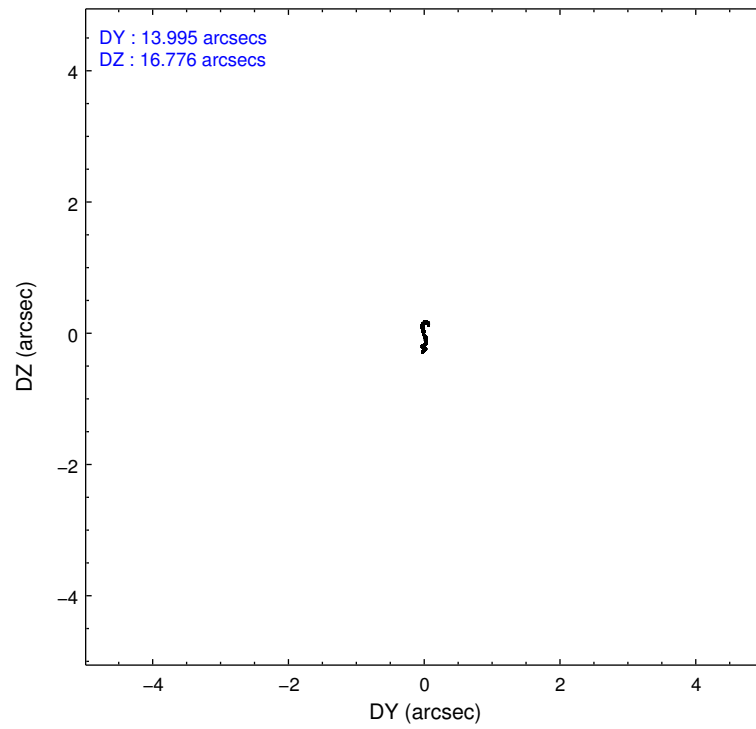
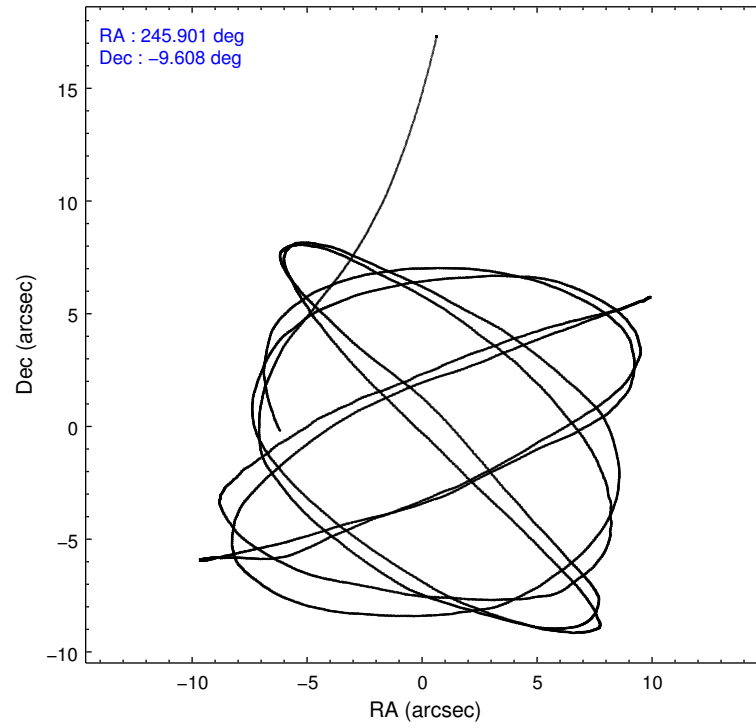
	ccd 0	ccd 1	ccd 2	ccd 3
level 1 events	23322	24222	24521	25277
rejected events	19934	20827	21361	22250
rejected %	85%	85%	87%	88%

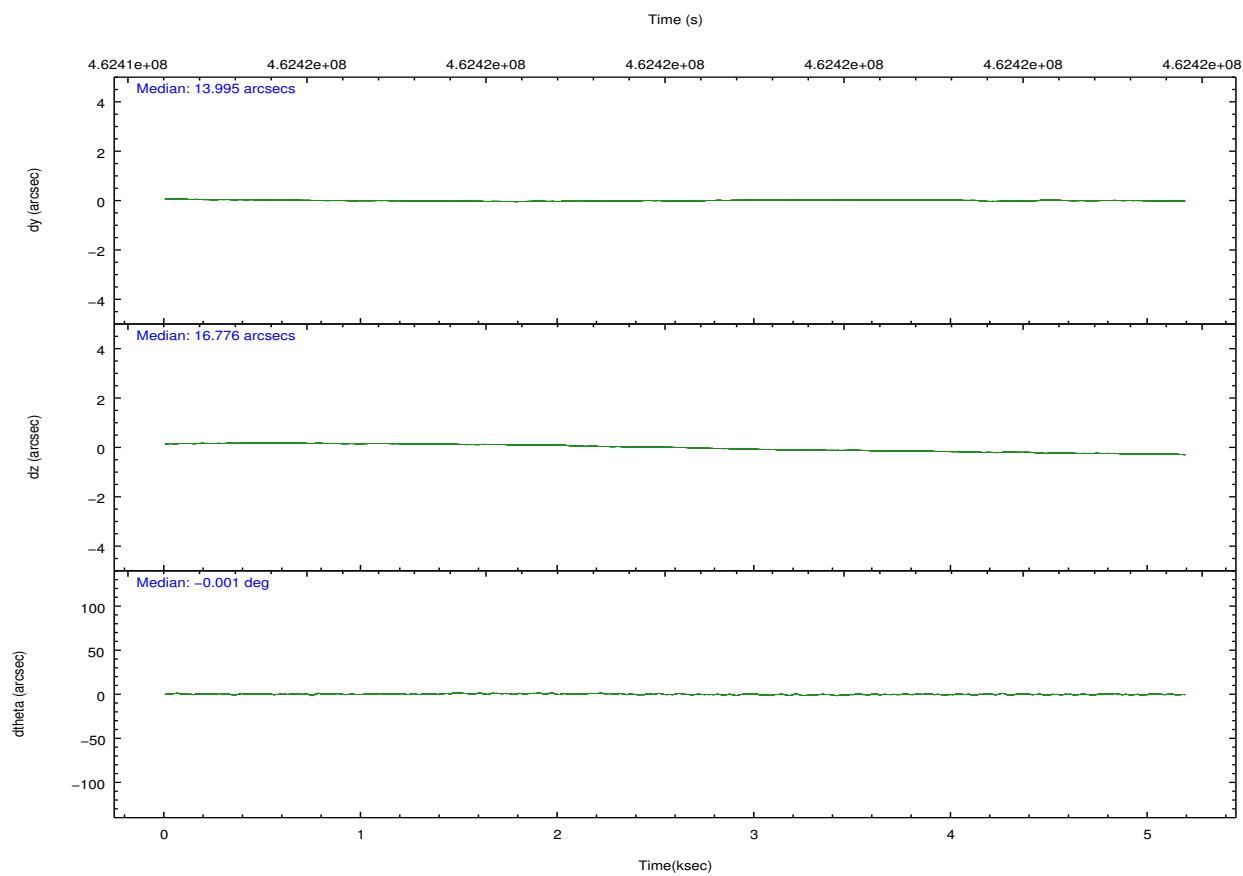
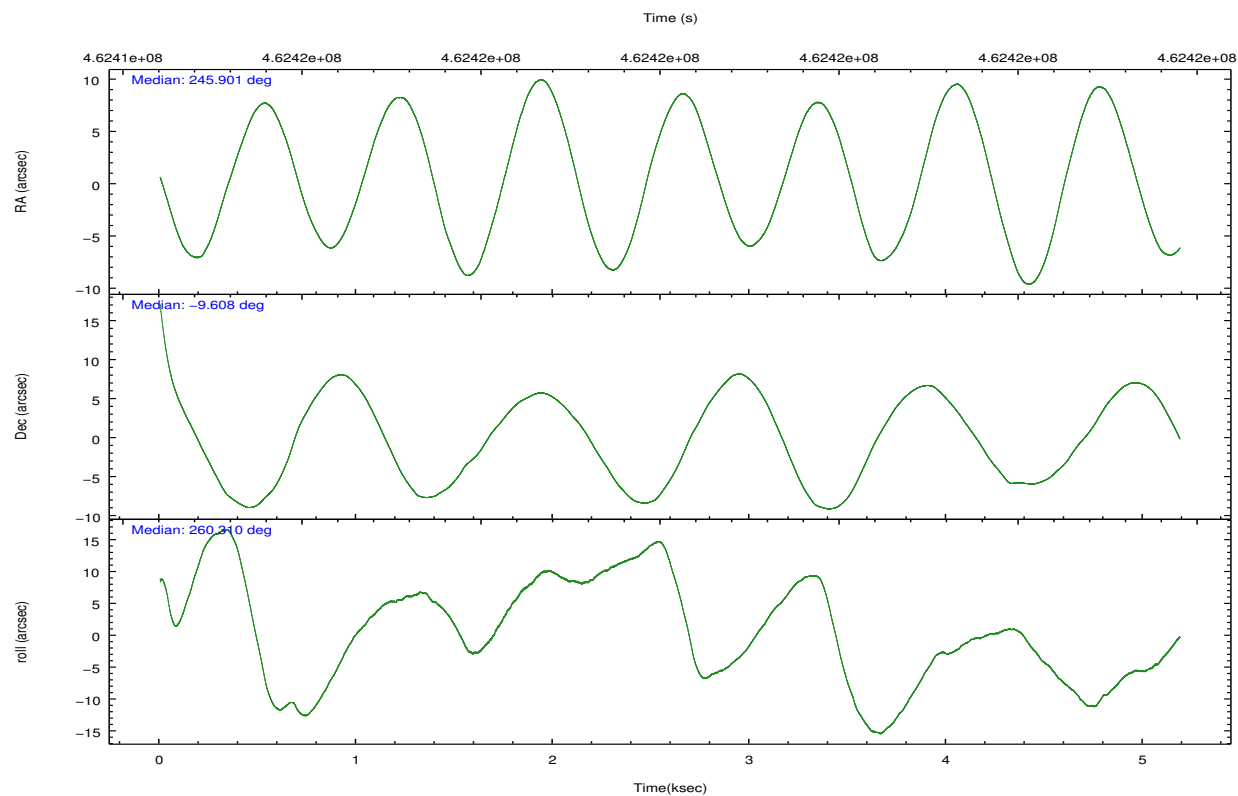
	ccd 0	ccd 1	ccd 2	ccd 3
grade 0 events	1266	1272	1104	1136
	5%	5%	4%	4%
grade 1 events	14	17	15	25
	0%	0%	0%	0%
grade 2 events	803	811	792	663
	3%	3%	3%	2%
grade 3 events	354	311	319	321
	1%	1%	1%	1%
grade 4 events	298	313	339	313
	1%	1%	1%	1%
grade 5 events	1191	1304	1081	1331
	5%	5%	4%	5%
grade 6 events	669	689	609	596
	2%	2%	2%	2%
grade 7 events	18727	19505	20262	20892
	80%	80%	82%	82%

2.2 Compared Parameters

Parameter	Planned	Actual	Parameter	Planned	Actual
Instrument	ACIS	ACIS	Obspar format version number	7	7
Detector	ACIS-0123	ACIS-0123	Obspar file type	PREDICTED	ACTUAL
Grating	NONE	NONE	Obspar update status	NONE	UPDATED
Data mode	FAINT	FAINT	Number of optional ACIS chips dropped	0	0
Observation mode	POINTING	POINTING	On-chip summing requested	N	N
[deg] Pointing RA	245.891298	245.9010254613581	Subarray requested	NONE	NONE
[deg] Pointing Dec	-9.582260	-9.607939780327781	Alternating exposures requested	N	N
[deg] Pointing Roll	260.109419	260.3197306944037	[s] Primary exposure time	0.000000	3.1
[mm] SIM focus pos	-0.782348	-0.7809083437167272			
[mm] SIM defocus	0	0.001439871863259334			
[mm] SIM translation stage pos	-233.592463	-233.5874344608287			
[mm] SIM translation stage offset	0	-0.005018542100998502			
[s] Observation start time (MET)	462414655.184000	462413524.81438			
Observation start date	2012-08-27T00:29:48	2012-08-27T00:12:04			
[s] Observation end time (MET)	462419655.184000	462419893.13972			
Observation end date	2012-08-27T01:53:08	2012-08-27T01:58:13			
Read mode	TIMED	TIMED			

2.3 Aspect



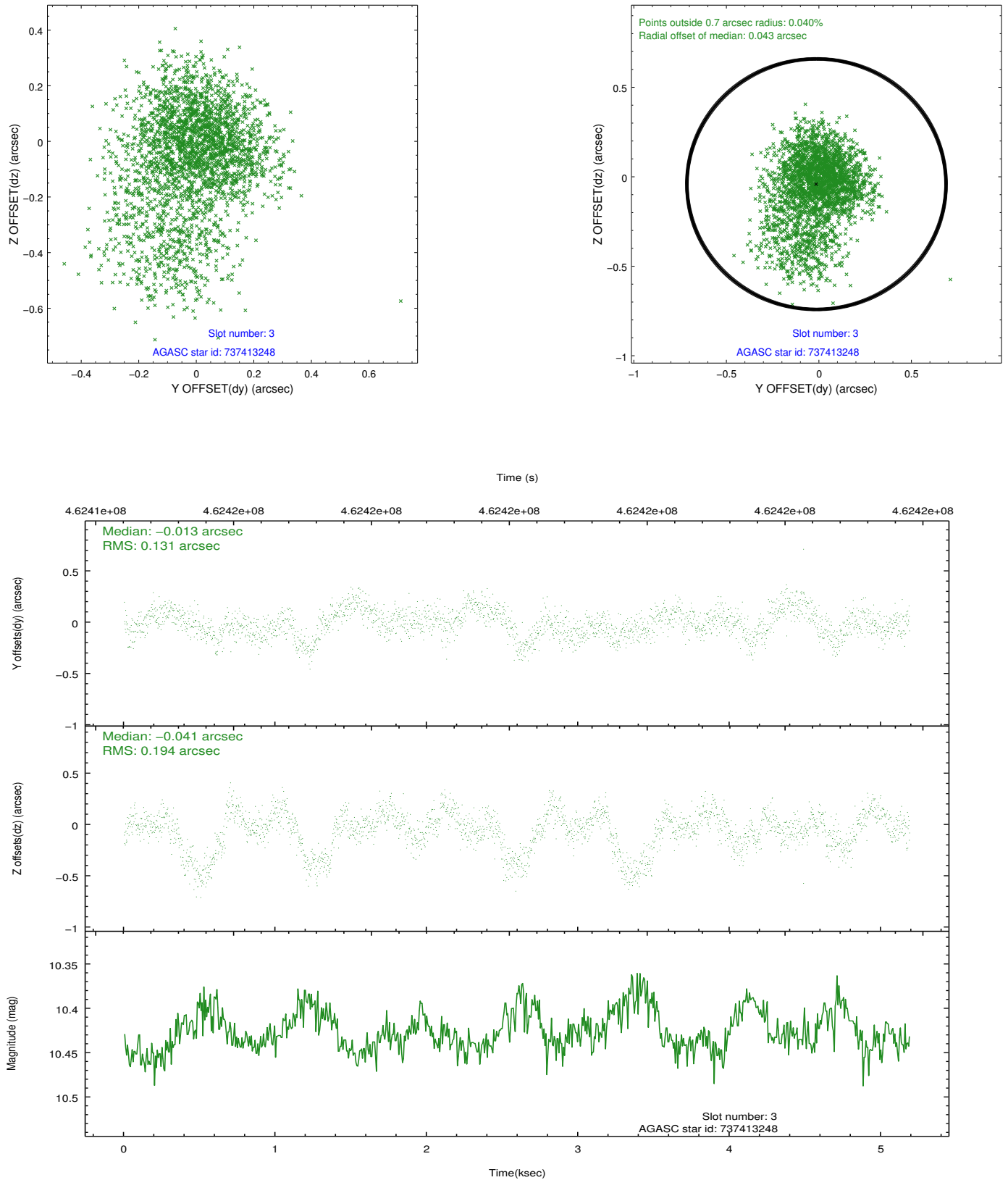


Slot Statistics

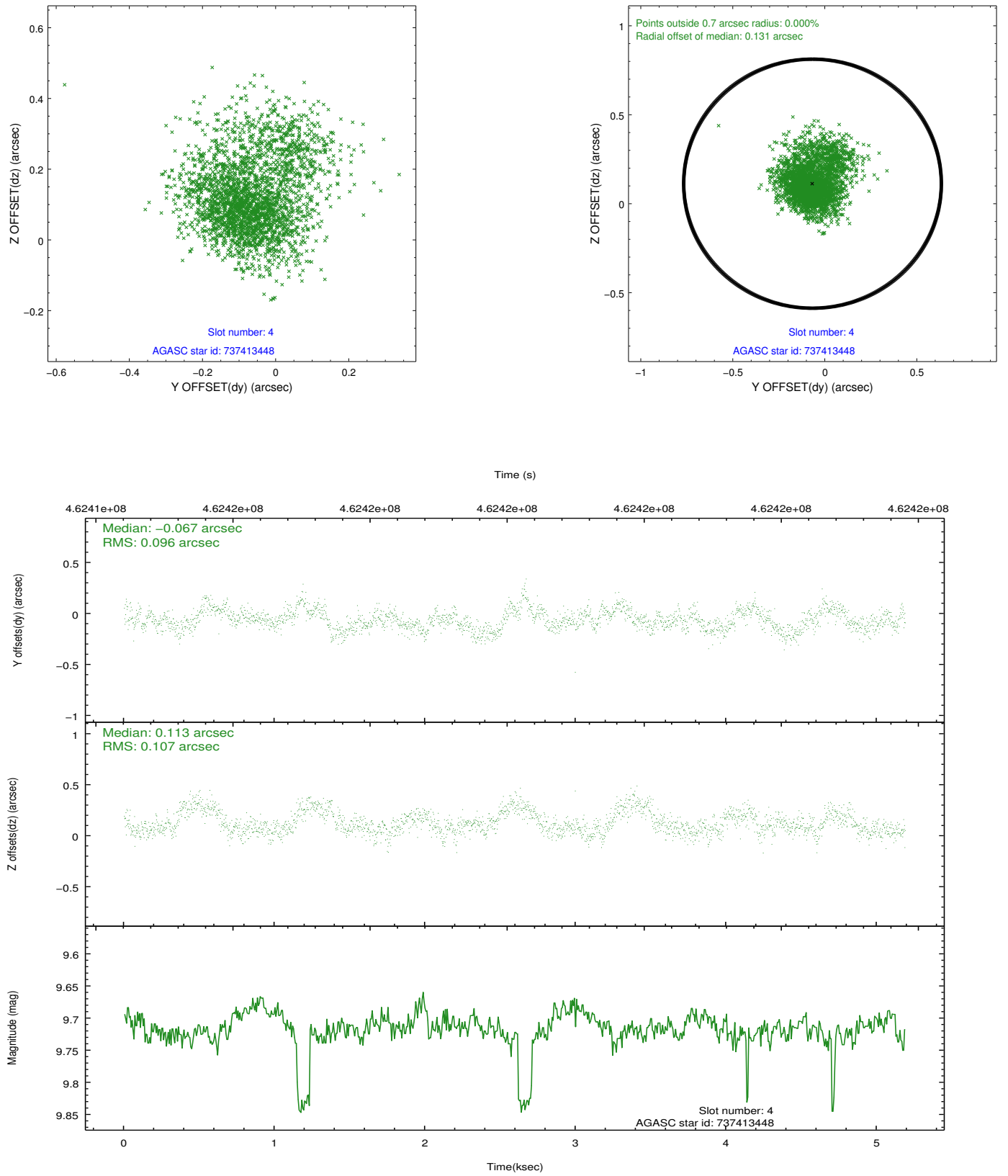
slot	status	id	mag	n_pts	med_dy	med_dz	dr1	dr2	ra	dec	mean_y	mean_z
0	FID	ACIS-I-1	7.04	1265	0.071	-0.038	0.007	0.011	0.000000	0.000000	925.54	-840.45
1	FID	ACIS-I-5	7.04	1265	-0.217	0.072	0.006	0.011	0.000000	0.000000	-1822.18	1056.60
2	FID	ACIS-I-6	7.03	1265	0.055	0.037	0.009	0.014	0.000000	0.000000	389.84	1702.36
3	GUIDE	737413248	10.43	2528	-0.013	-0.041	0.237	0.439	245.803097	-9.069442	-1763.78	-625.63
4	GUIDE	737413448	9.72	2521	-0.067	0.113	0.151	0.253	246.557199	-9.238638	-1623.08	2119.30
5	OMITTED		0.00	0	0.000	0.000	0.000	0.000	0.000000	0.000000	0.00	0.00
6	GUIDE	737941896	8.00	2531	0.078	-0.060	0.118	0.195	245.436625	-10.186143	2419.91	-1211.26
7	OMITTED		0.00	0	0.000	0.000	0.000	0.000	0.000000	0.000000	0.00	0.00

2.4 Star Slots

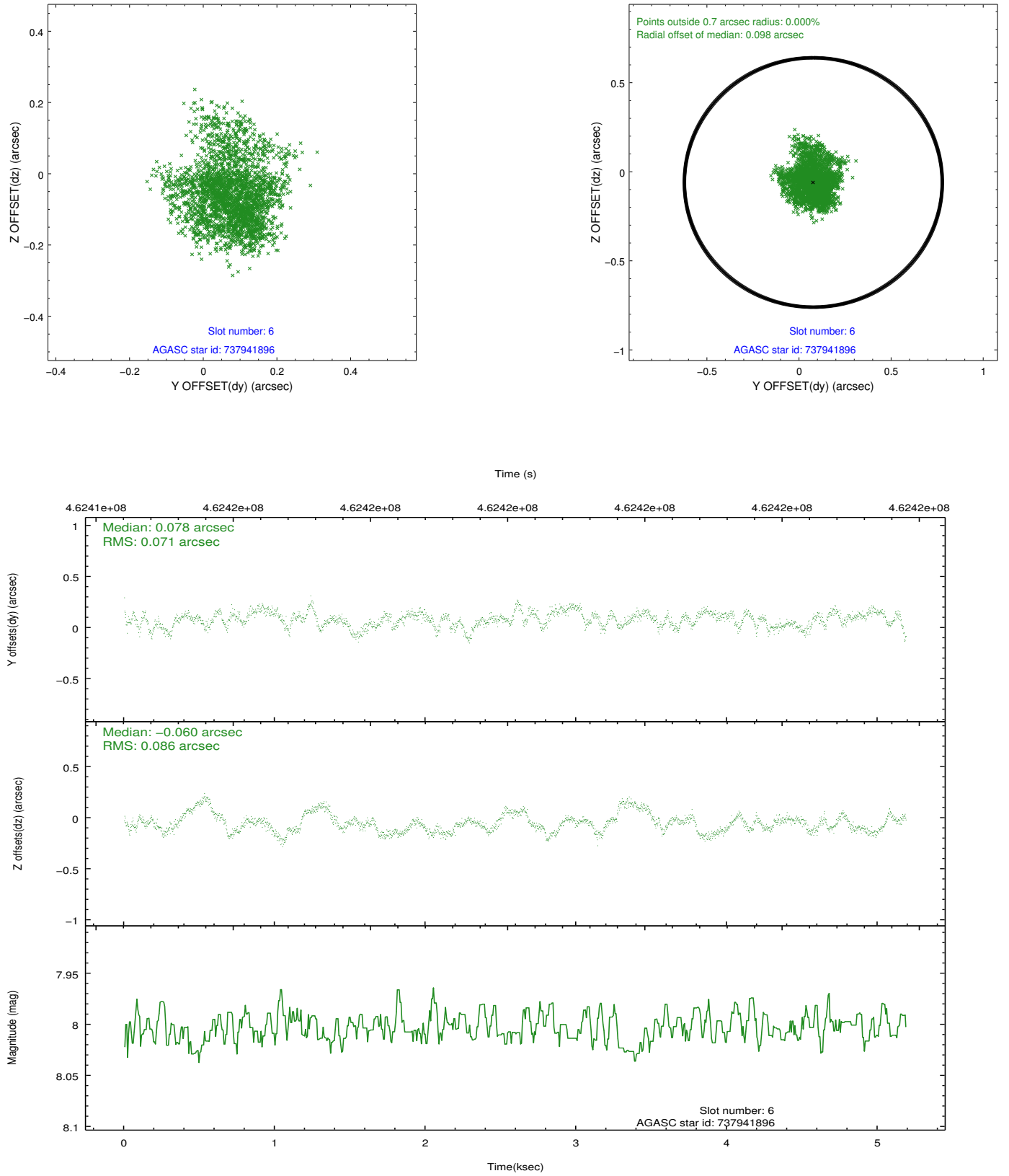
2.4.1 Slot 3



2.4.2 Slot 4

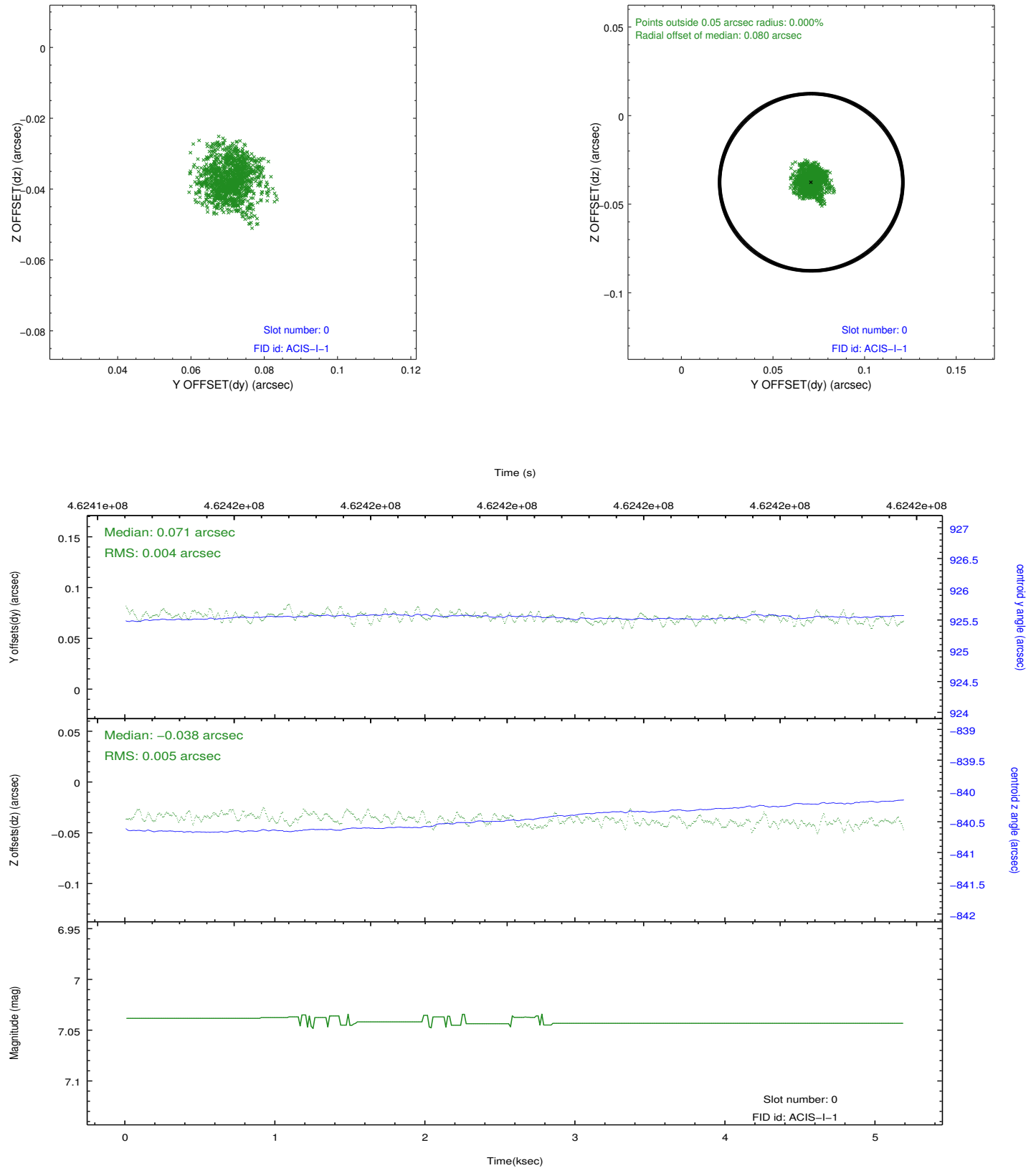


2.4.3 Slot 6

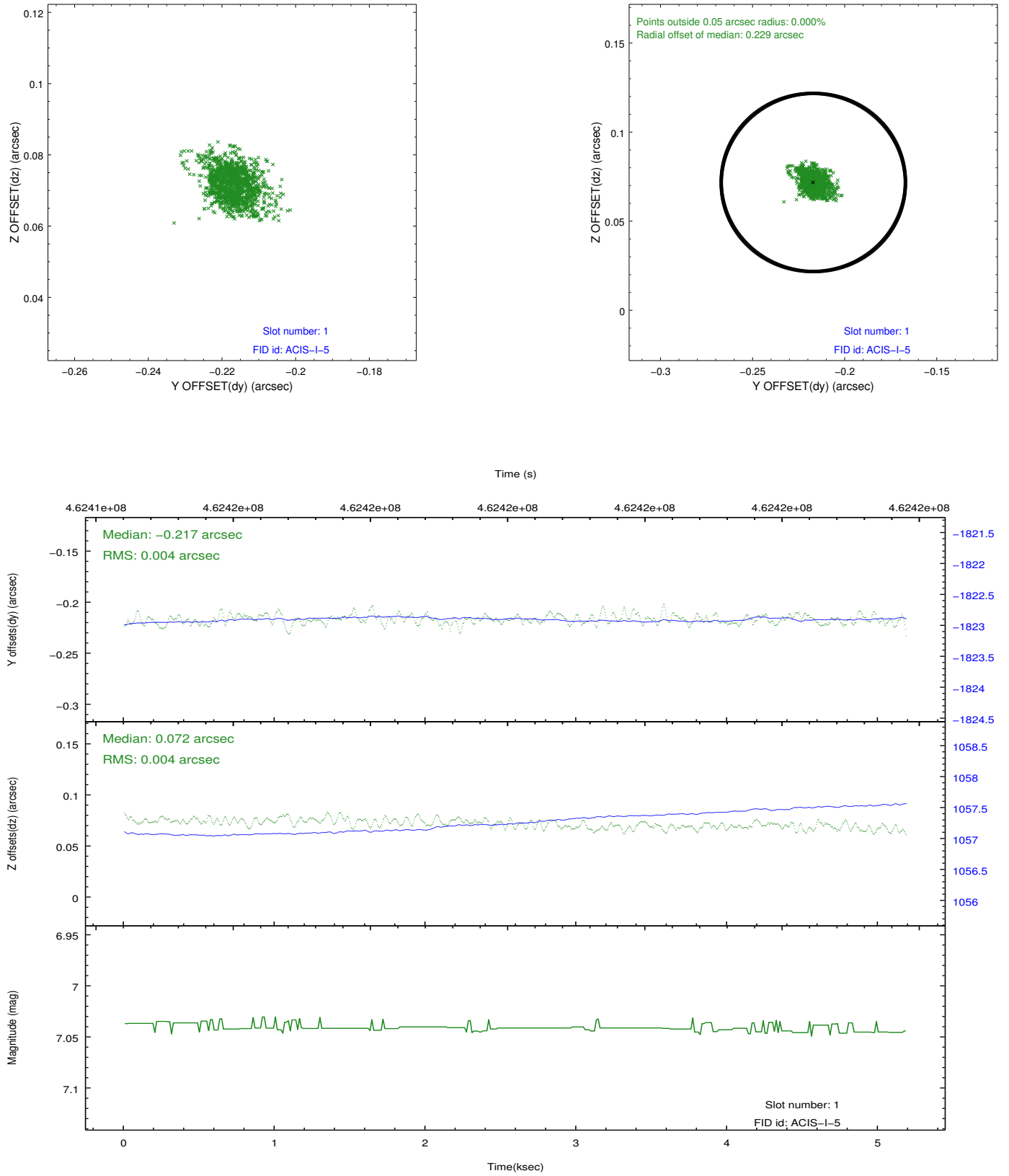


2.5 FID Slots

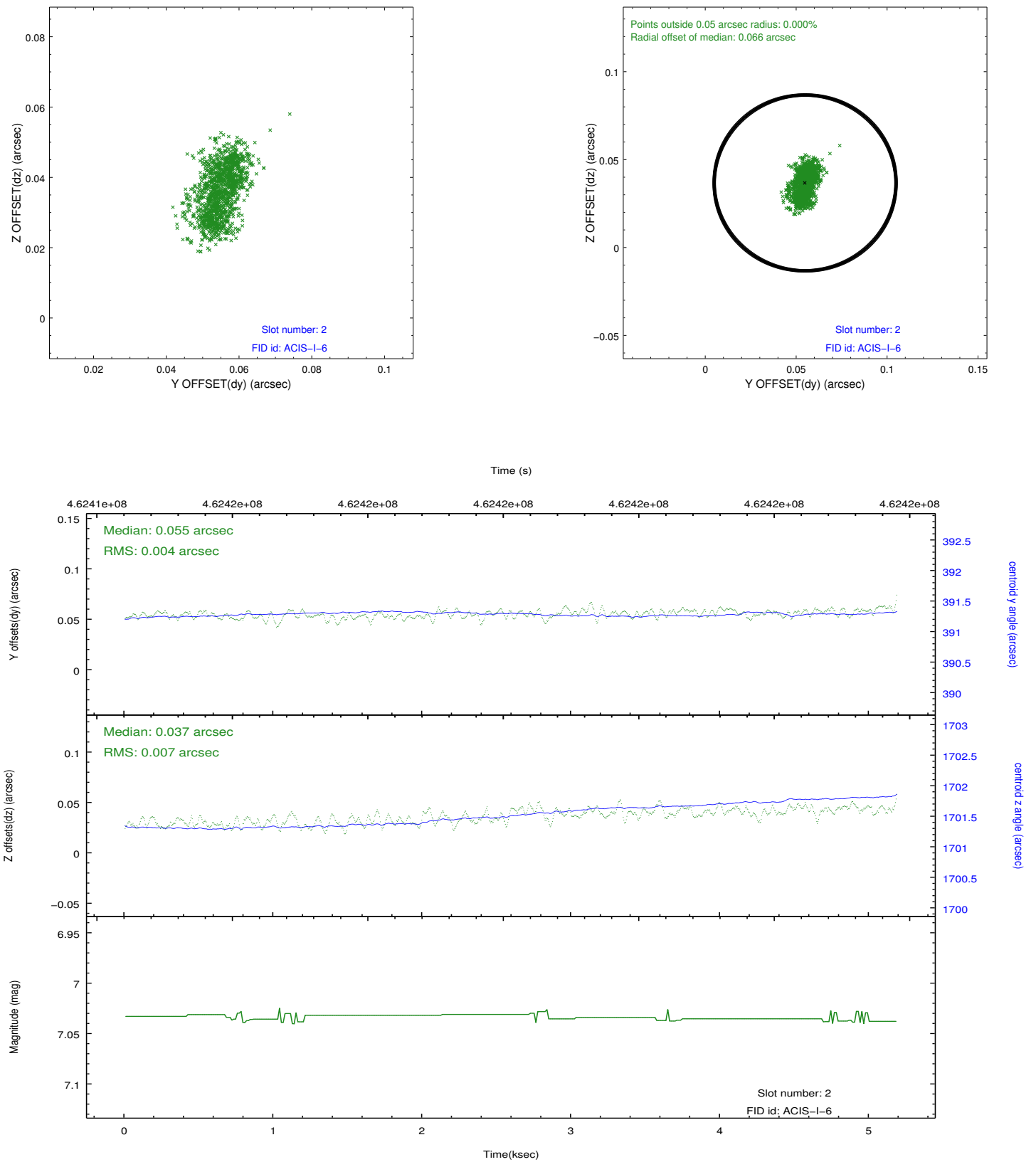
2.5.1 Slot 0



2.5.2 Slot 1



2.5.3 Slot 2



A Summary

A.1 Status

V&V Scientist	Joy Nichols
V&V Date (YYYY-MM-DD)	2012.09.05
V&V Edition	1
V&V Disposition and Status	OK
V&V Charge Time	5.0933000391722

A.2 Comments

The guide stars in slots 5 and 7 were removed from the aspect solution due to poor data quality. The aspect solution is improved by the removal of these guide stars from the solution.