

V&V Reference Report

L2 ASCDS Version : 8.4.5

Observation 14040 - L2 Version 1
Chandra X-Ray Center

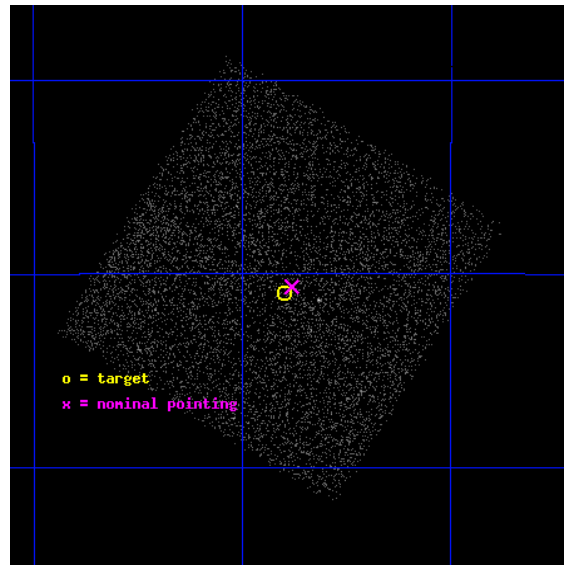
L2 Processing Date : Aug 28 2012

Contents

1	Front	2
2	OBI	3
2.1	OBI	3
2.1.1	Images	3
2.1.2	Bias	3
2.1.3	Parameters	4
2.1.4	Events	4
2.2	Compared Parameters	5
2.3	Aspect	6
2.4	Star Slots	9
2.4.1	Slot 3	9
2.4.2	Slot 4	10
2.4.3	Slot 5	11
2.4.4	Slot 6	12
2.4.5	Slot 7	13
2.5	FID Slots	14
2.5.1	Slot 0	14
2.5.2	Slot 1	15
2.5.3	Slot 2	16
A	Summary	17
A.1	Status	17
A.2	Comments	17

1 Front

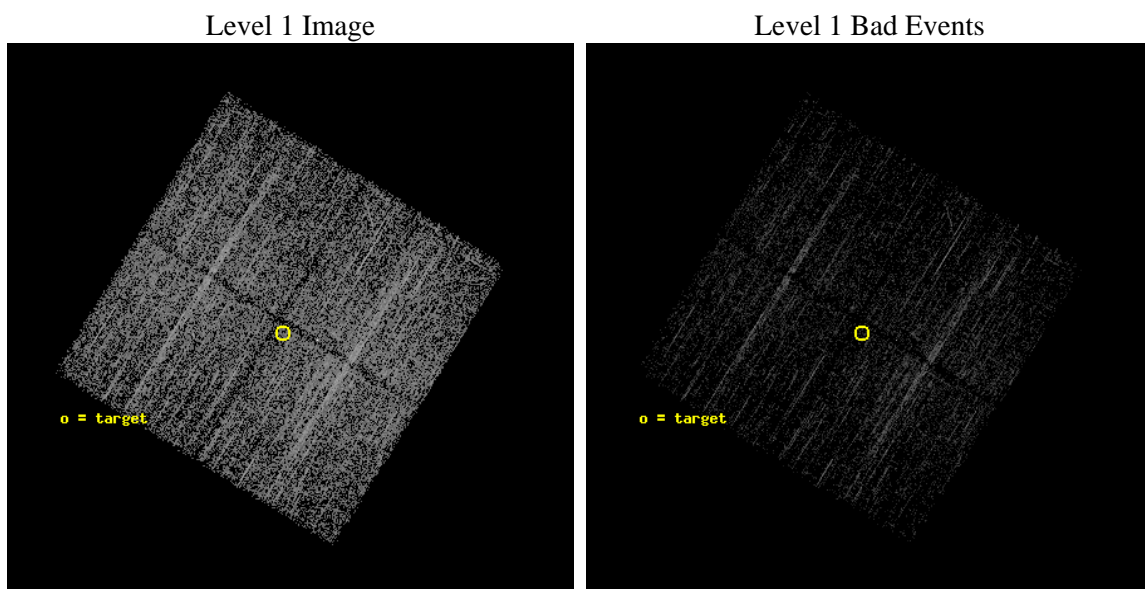
seq_num	901006	Sequence number
obs_id	14040	Observation id
title	BAT, Chandra, NuSTAR and The origin of the Cosmic X-ray Background	
observer	Dr. Marco Ajello	Principal investigator
object	J0640.7-4321	Source name
dtcycle	0	
cycle	P	events from which exps? Prim/Second/Both
ra_targ	100.199167	Observer's specified target RA [deg]
dec_targ	-43.35	Observer's specified target Dec [deg]
ra_nom	100.19072785518	Nominal RA [deg]
dec_nom	-43.344613587088	Nominal Dec [deg]
roll_nom	121.72793957587	Nominal Roll [deg]
revision	1	Processing version of data
ontime	5089.8672254682	Sum of GTIs [s]
livetime	5023.3643630617	Livetime [s]
ontime0	5089.7441054583	Sum of GTIs [s]
ontime1	5089.7851454616	Sum of GTIs [s]
ontime2	5086.685185194	Sum of GTIs [s]
ontime3	5089.8672254682	Sum of GTIs [s]
l2events	10601	Number of level 2 events



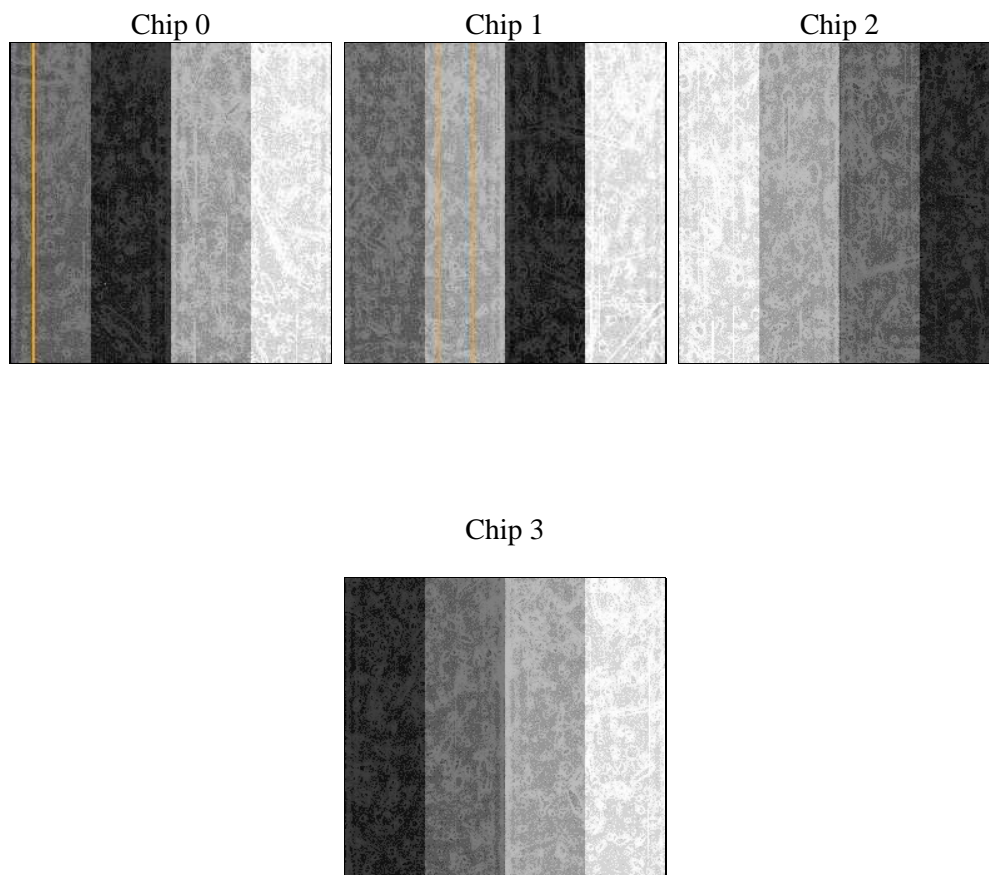
2 OBI

2.1 OBI

2.1.1 Images



2.1.2 Bias



2.1.3 Parameters

obi_num	0	Obi number	sched_exp_time	5000.000000	[s] Scheduled observation exposure time
ascdsver	8.4.5	Processing system revision	ontime	5089.8672254682	Sum of GTIs [s]
caldsver	4.5.1.1	 	ontime0	5089.7441054583	Sum of GTIs [s]
date	2012-08-28T04:35:37	Date and time of file creation	ontime1	5089.7851454616	Sum of GTIs [s]
revision	1	Processing version of data	ontime2	5086.685185194	Sum of GTIs [s]
			ontime3	5089.8672254682	Sum of GTIs [s]
			l1events	99367	Number of level 1 events

2.1.4 Events

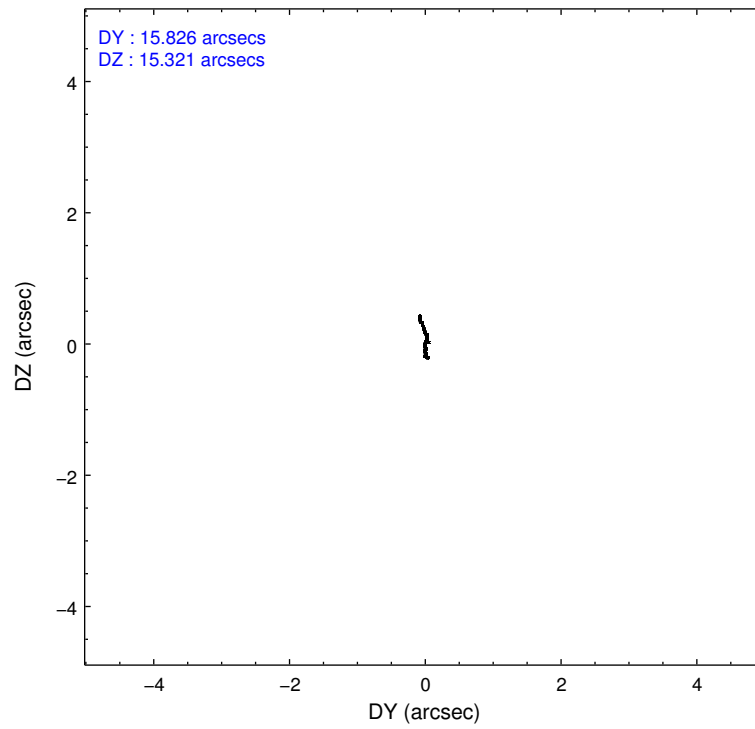
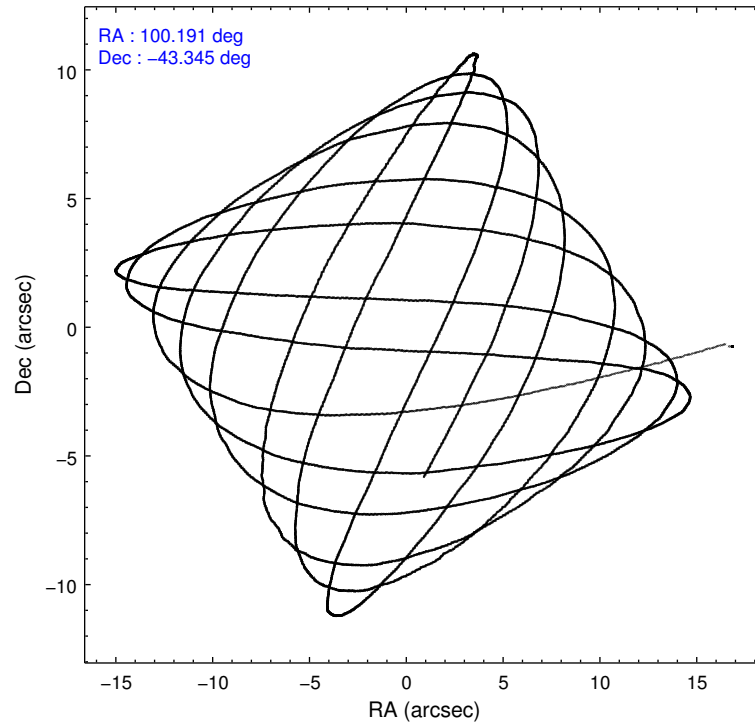
	ccd 0	ccd 1	ccd 2	ccd 3
level 1 events	22693	24623	26497	25554
rejected events	19655	21155	23211	22717
rejected %	86%	85%	87%	88%

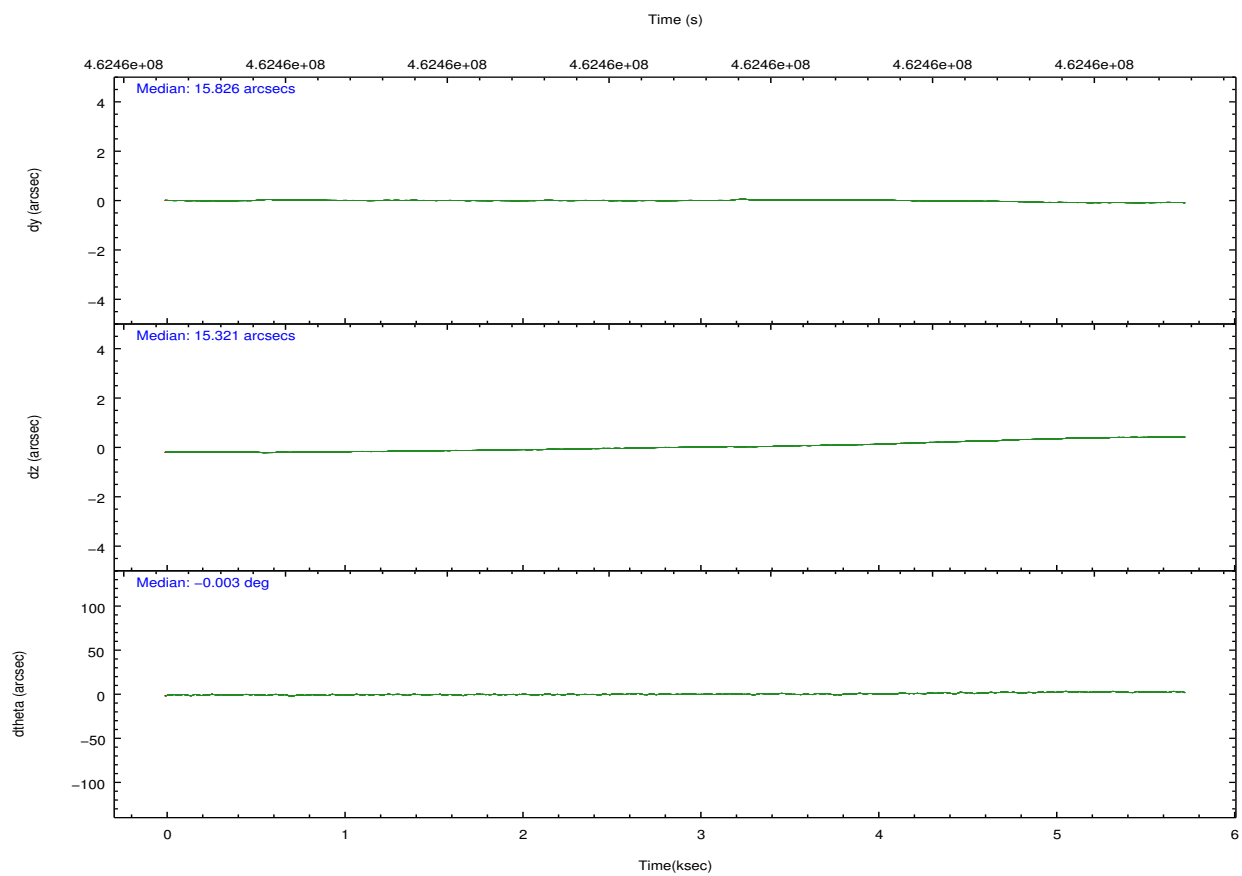
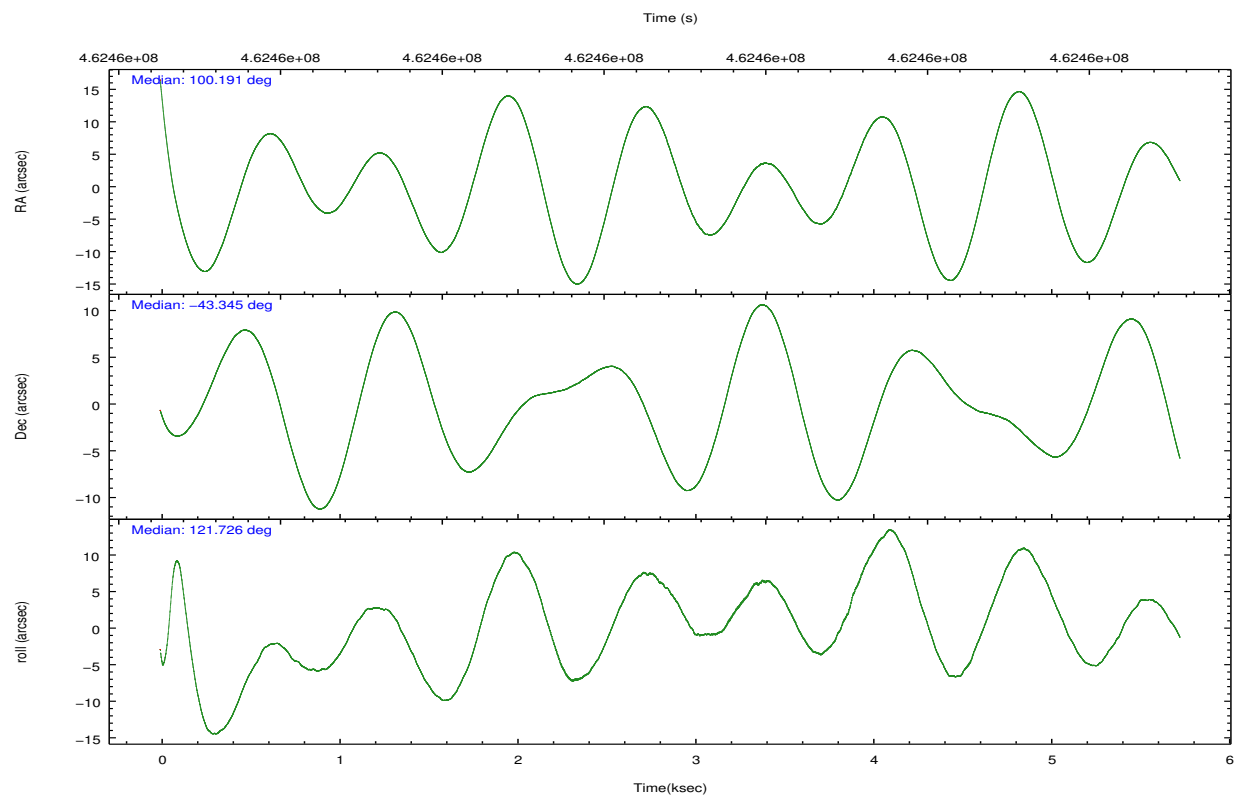
	ccd 0	ccd 1	ccd 2	ccd 3
grade 0 events	1030	1159	1223	1032
	4%	4%	4%	4%
grade 1 events	13	9	18	12
	0%	0%	0%	0%
grade 2 events	716	871	822	613
	3%	3%	3%	2%
grade 3 events	328	339	301	290
	1%	1%	1%	1%
grade 4 events	291	349	331	291
	1%	1%	1%	1%
grade 5 events	1150	1308	1161	1380
	5%	5%	4%	5%
grade 6 events	674	751	615	612
	2%	3%	2%	2%
grade 7 events	18491	19837	22026	21324
	81%	80%	83%	83%

2.2 Compared Parameters

Parameter	Planned	Actual	Parameter	Planned	Actual
Instrument	ACIS	ACIS	Obspar format version number	7	7
Detector	ACIS-0123	ACIS-0123	Obspar file type	PREDICTED	ACTUAL
Grating	NONE	NONE	Obspar update status	NONE	UPDATED
Data mode	FAINT	FAINT	Number of optional ACIS chips dropped	0	0
Observation mode	POINTING	POINTING	On-chip summing requested	N	N
[deg] Pointing RA	100.224163	100.1907278551834	Subarray requested	NONE	NONE
[deg] Pointing Dec	-43.357625	-43.34461358708828	Alternating exposures requested	N	N
[deg] Pointing Roll	121.542271	121.727939575873	[s] Primary exposure time	0.000000	3.1
[mm] SIM focus pos	-0.782348	-0.7809083437167272			
[mm] SIM defocus	0	0.001439871863259334			
[mm] SIM translation stage pos	-233.592463	-233.5874344608287			
[mm] SIM translation stage offset	0	-0.005018542100998502			
[s] Observation start time (MET)	462457265.184000	462455605.16663			
Observation start date	2012-08-27T12:19:58	2012-08-27T11:53:25			
[s] Observation end time (MET)	462462265.184000	462463710.35457			
Observation end date	2012-08-27T13:43:18	2012-08-27T14:08:30			
Read mode	TIMED	TIMED			

2.3 Aspect



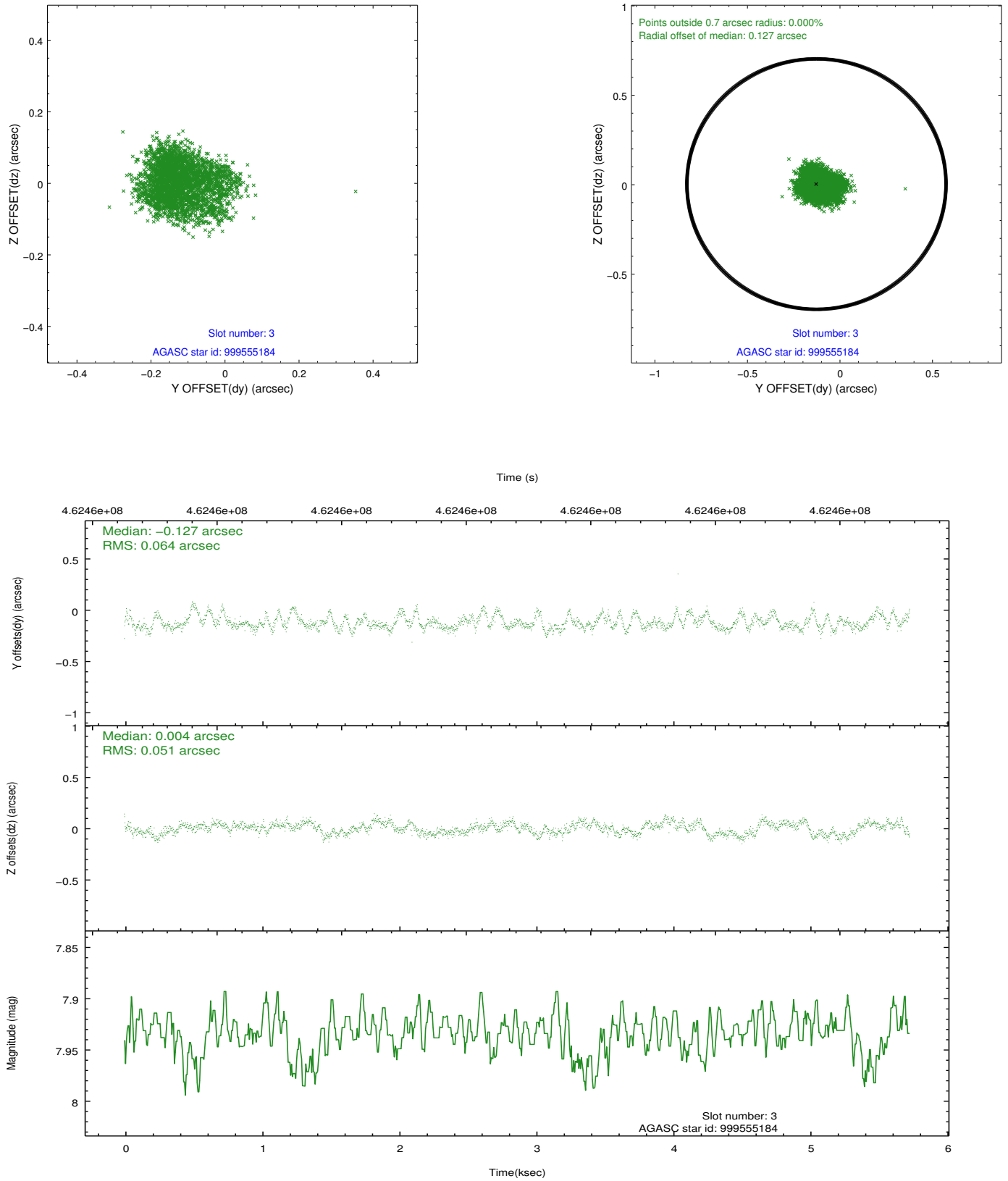


Slot Statistics

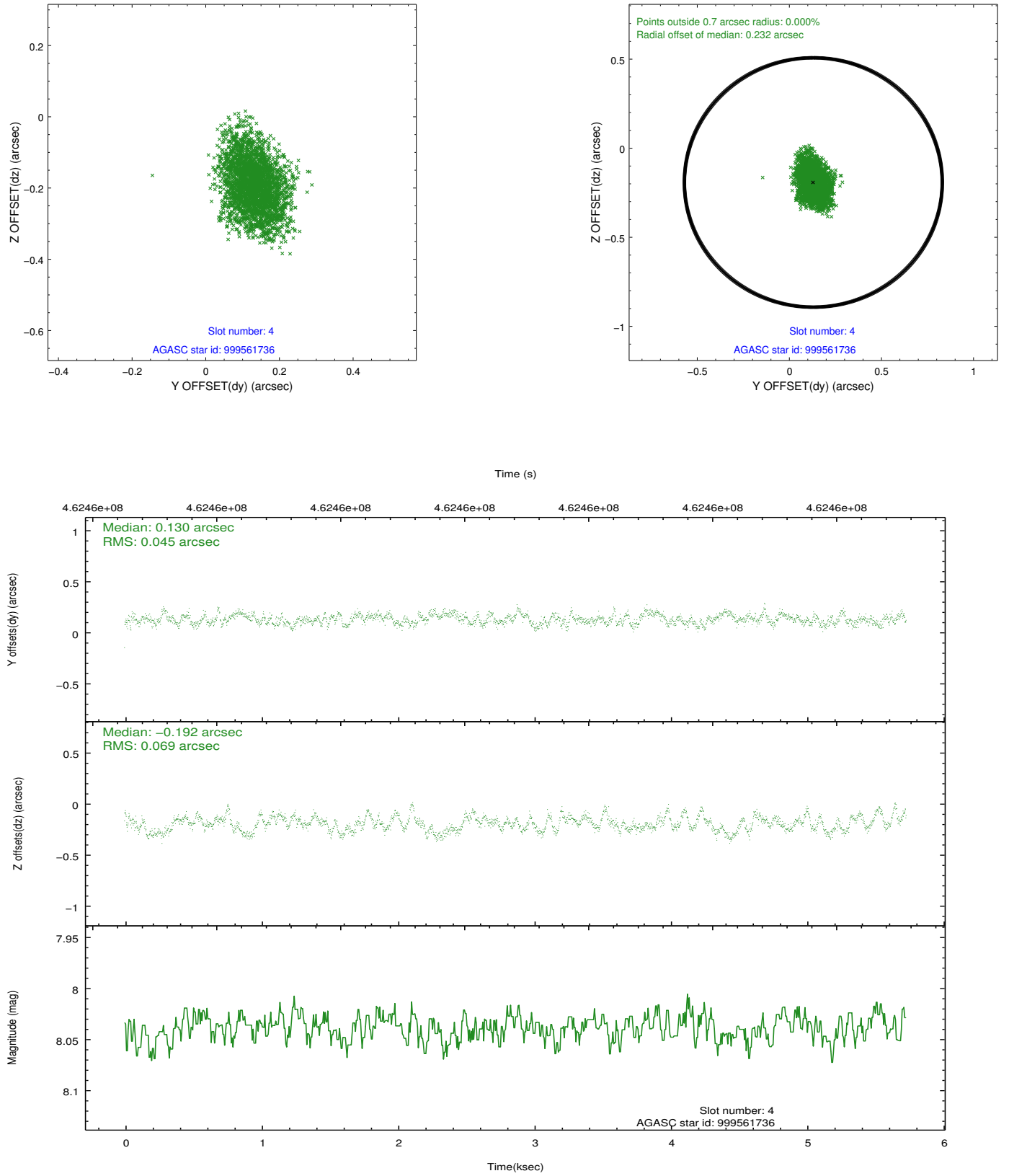
slot	status	id	mag	n_pts	med_dy	med_dz	dr1	dr2	ra	dec	mean_y	mean_z
0	FID	ACIS-I-1	7.08	1399	0.032	-0.005	0.013	0.025	0.000000	0.000000	923.67	-838.96
1	FID	ACIS-I-5	7.07	1399	-0.219	0.035	0.007	0.013	0.000000	0.000000	-1824.15	1058.01
2	FID	ACIS-I-6	7.07	1399	0.094	0.041	0.010	0.017	0.000000	0.000000	388.10	1703.73
3	GUIDE	999555184	7.93	2796	-0.127	0.004	0.087	0.139	99.945052	-43.402898	241.59	708.16
4	GUIDE	999561736	8.04	2797	0.130	-0.192	0.088	0.144	99.700340	-43.824774	-725.48	2041.56
5	GUIDE	1001260272	9.26	2790	0.130	0.324	0.109	0.181	100.499193	-43.550856	-969.67	-245.98
6	GUIDE	1001265504	8.44	2794	0.060	-0.040	0.074	0.124	100.056836	-43.886222	-1395.81	1365.57
7	GUIDE	999557704	7.39	2796	-0.197	-0.098	0.084	0.133	99.333215	-43.451297	919.04	2167.78

2.4 Star Slots

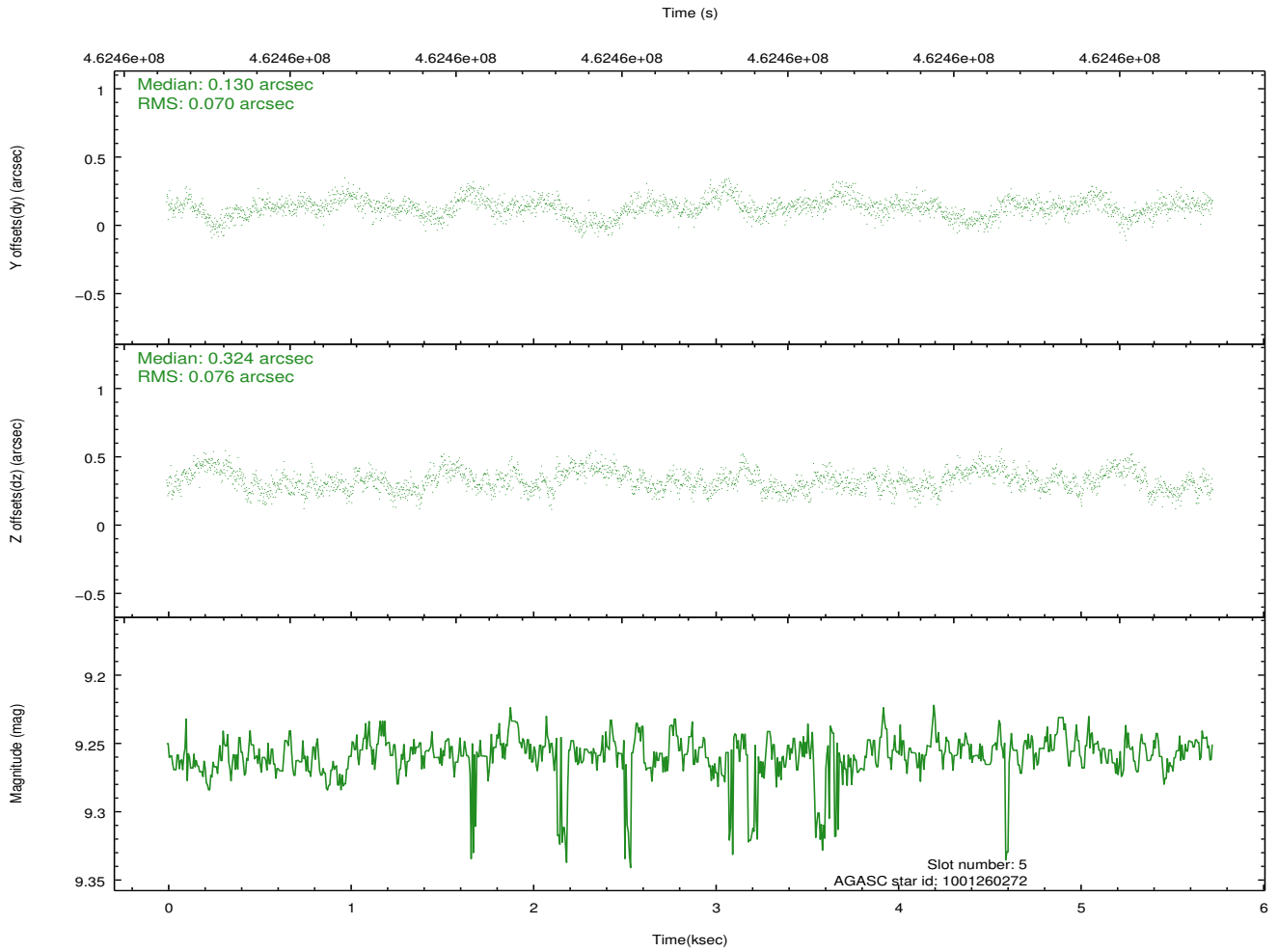
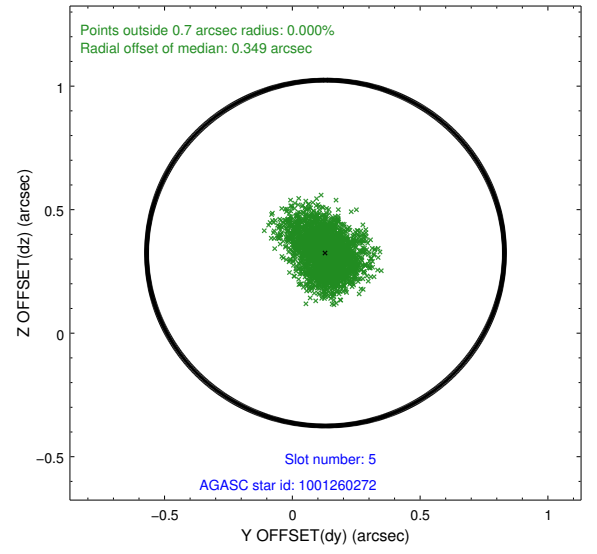
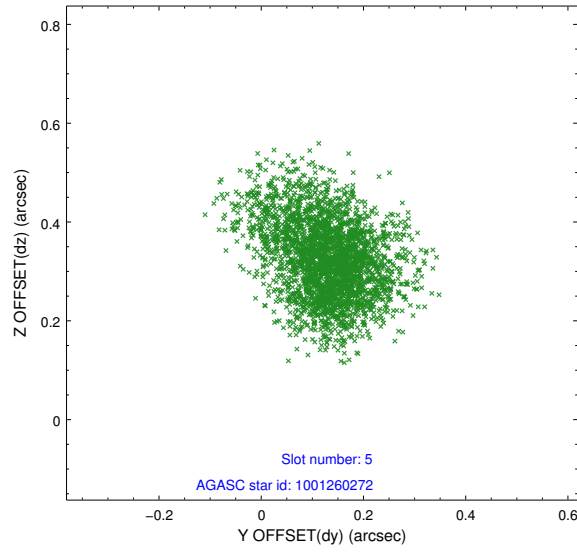
2.4.1 Slot 3



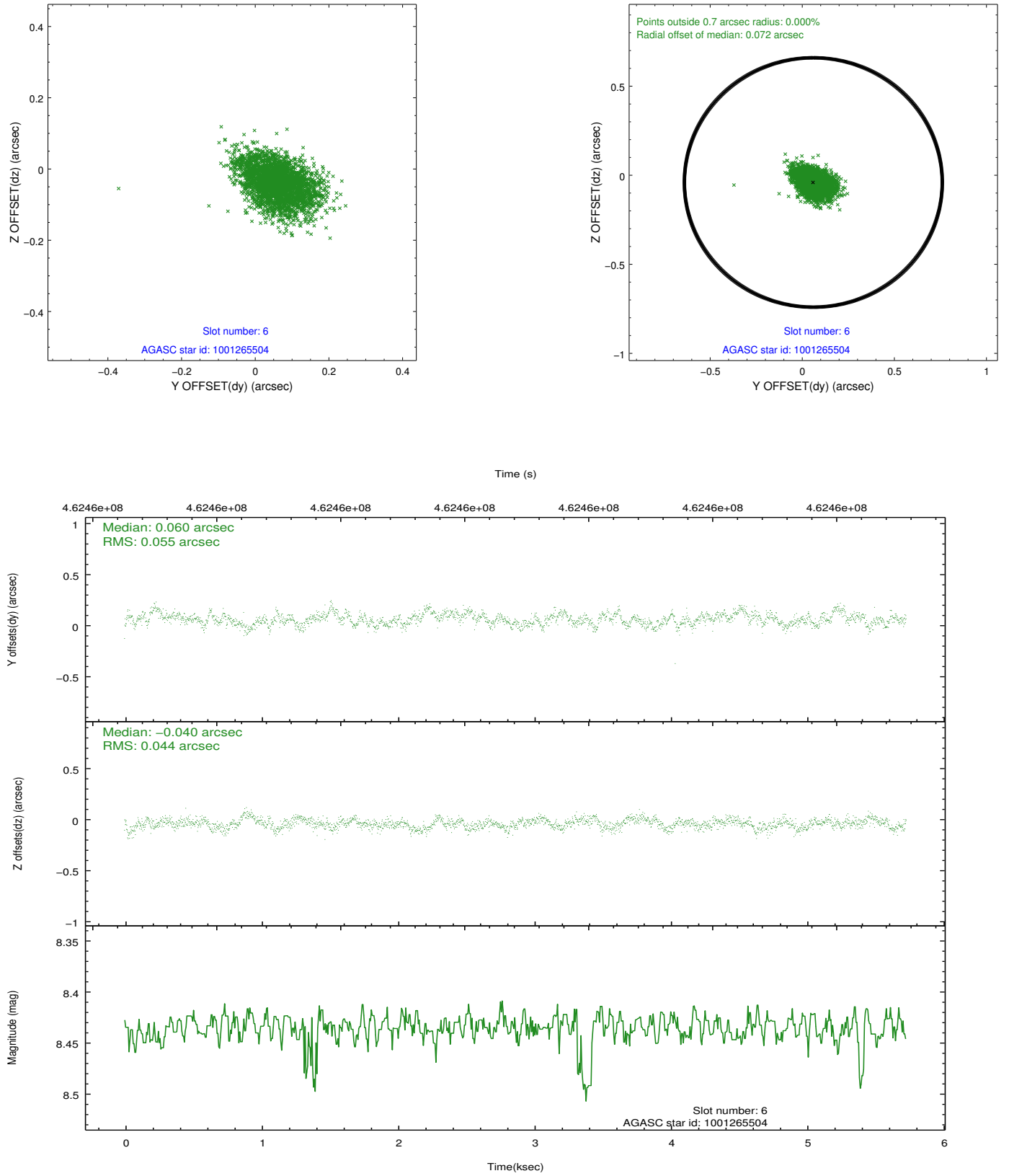
2.4.2 Slot 4



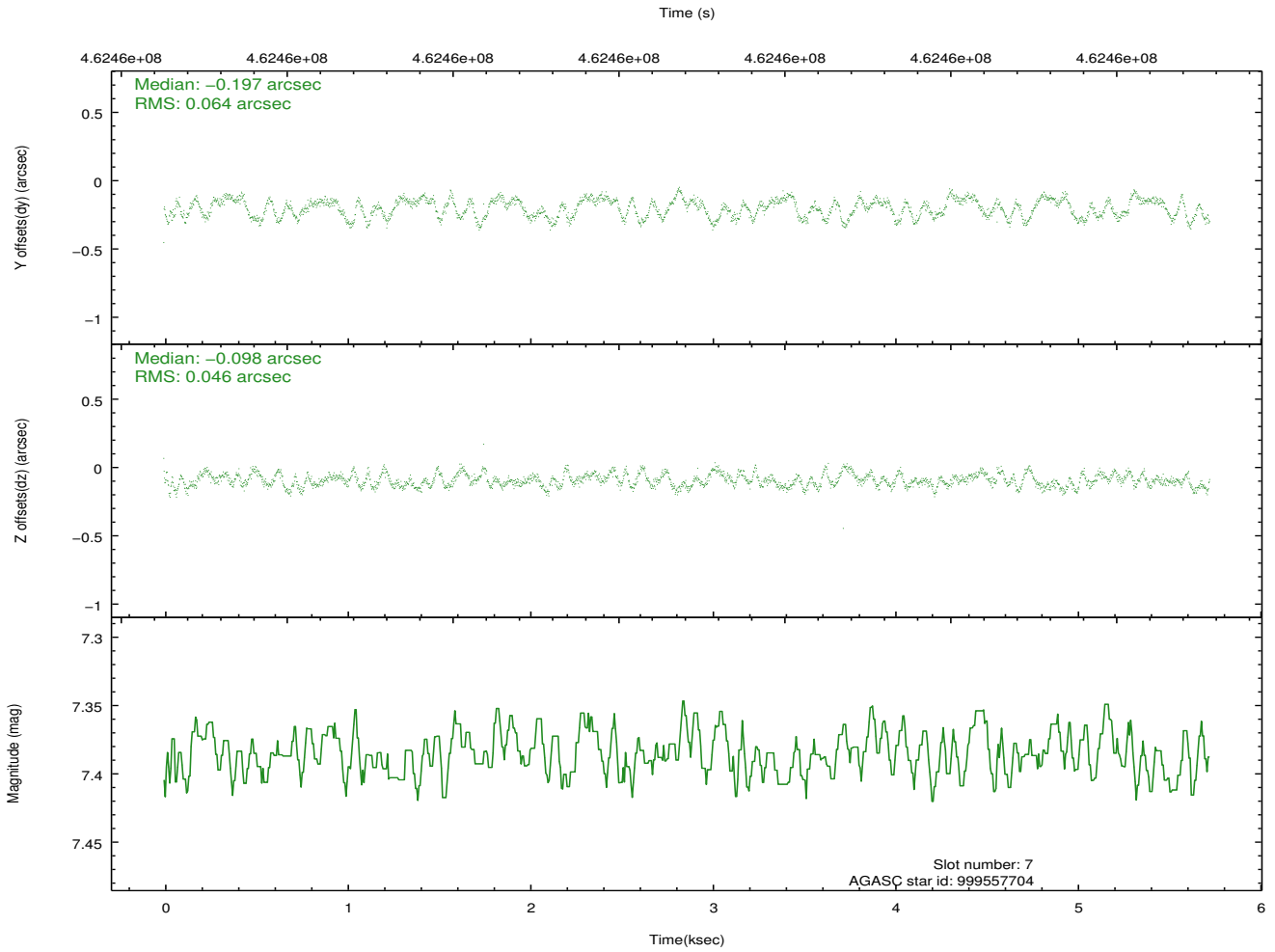
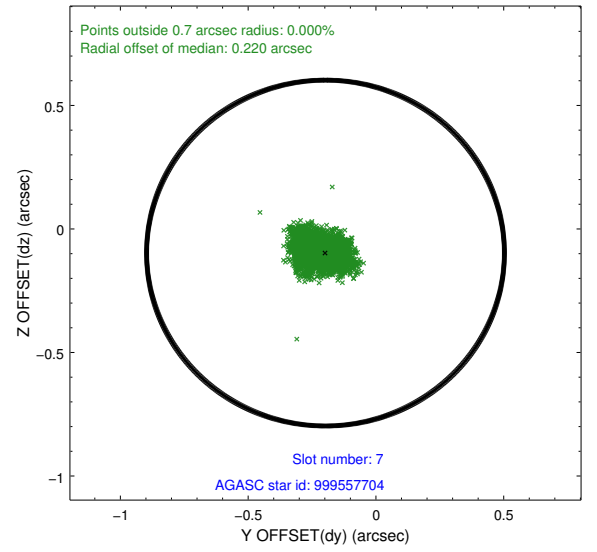
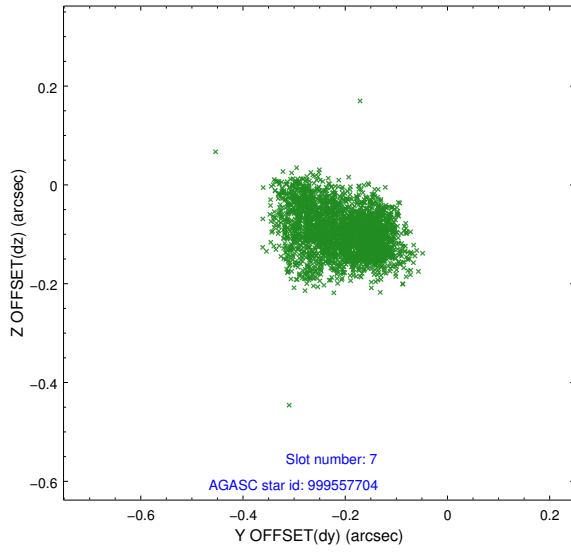
2.4.3 Slot 5



2.4.4 Slot 6

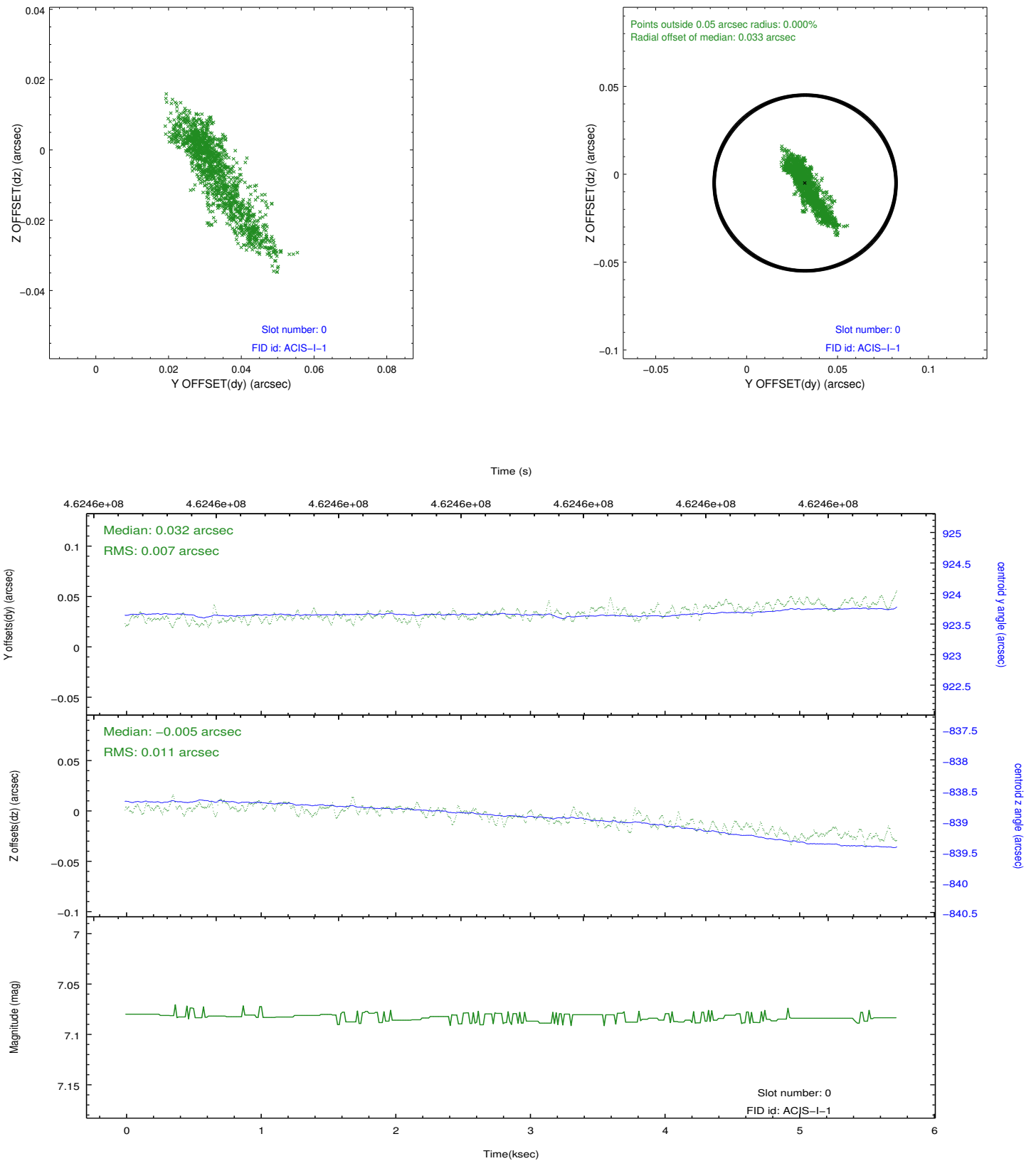


2.4.5 Slot 7

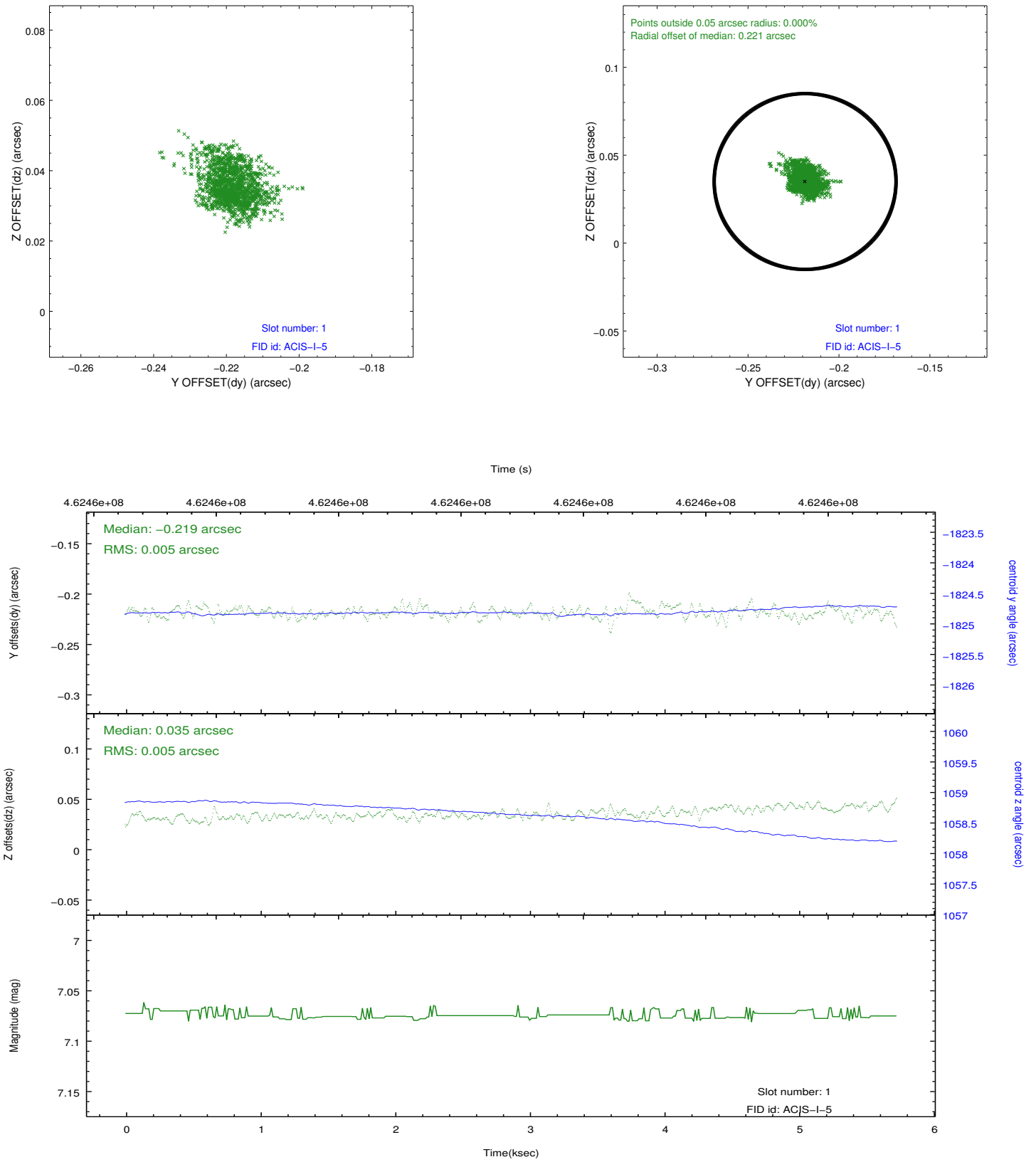


2.5 FID Slots

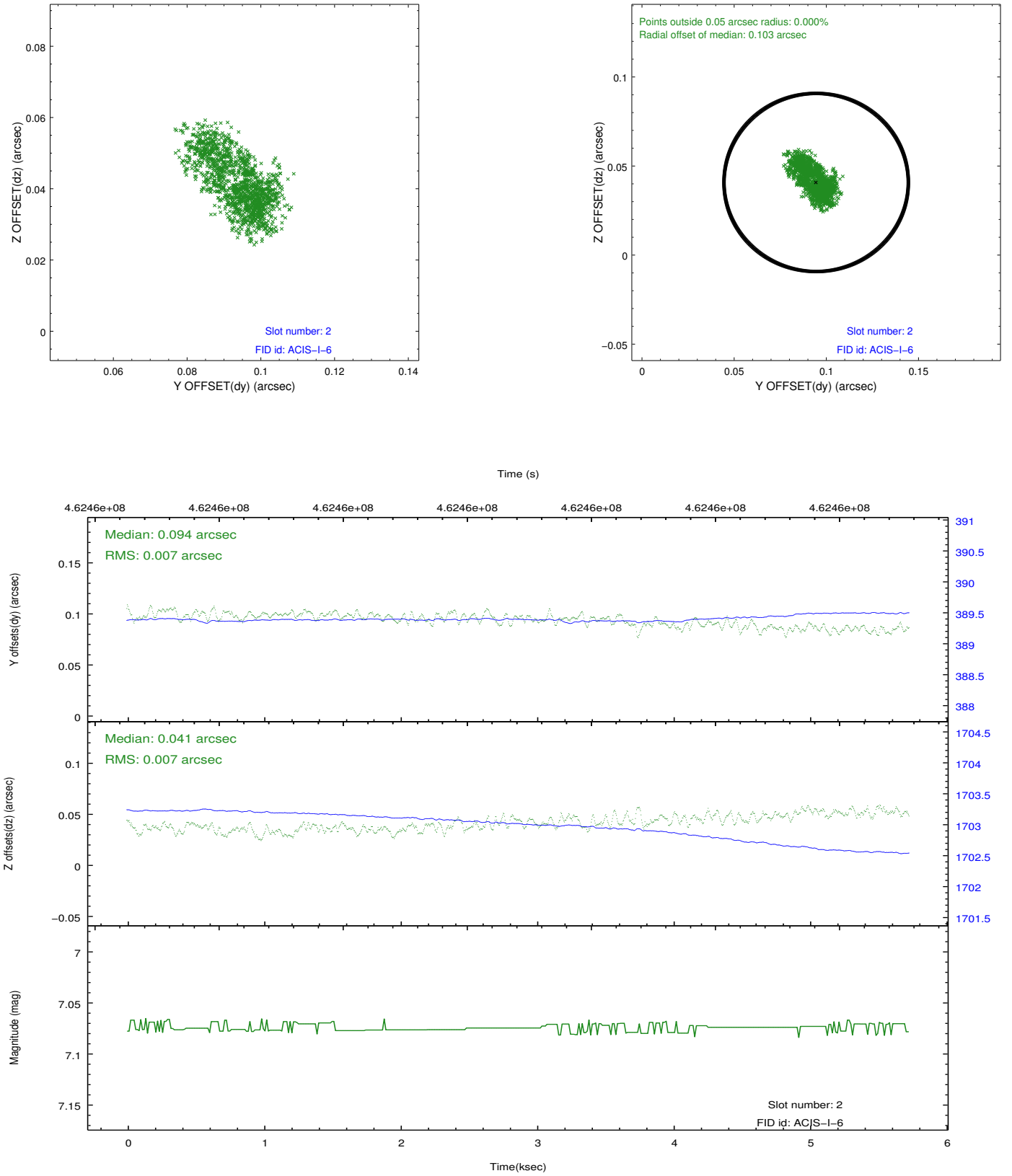
2.5.1 Slot 0



2.5.2 Slot 1



2.5.3 Slot 2



A Summary

A.1 Status

V&V Scientist	Joy Nichols
V&V Date (YYYY-MM-DD)	2012.08.28
V&V Edition	1
V&V Disposition and Status	OK
V&V Charge Time	5.0898672254682

A.2 Comments