

V&V Reference Report

L2 ASCDS Version : 8.4.5

Observation 15589 - L2 Version 2
Chandra X-Ray Center

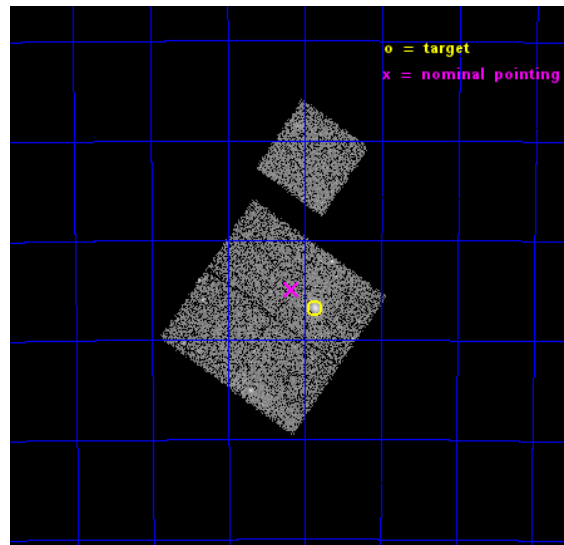
L2 Processing Date : Nov 29 2014

Contents

1	Front	2
2	OBI	3
2.1	OBI	3
2.1.1	Images	3
2.1.2	Bias	3
2.1.3	Parameters	4
2.1.4	Events	4
2.2	Compared Parameters	5
2.3	Aspect	6
2.4	Star Slots	9
2.4.1	Slot 3	9
2.4.2	Slot 4	10
2.4.3	Slot 5	11
2.4.4	Slot 6	12
2.4.5	Slot 7	13
2.5	FID Slots	14
2.5.1	Slot 0	14
2.5.2	Slot 1	15
2.5.3	Slot 2	16
A	Summary	17
A.1	Status	17
A.2	Comments	17

1 Front

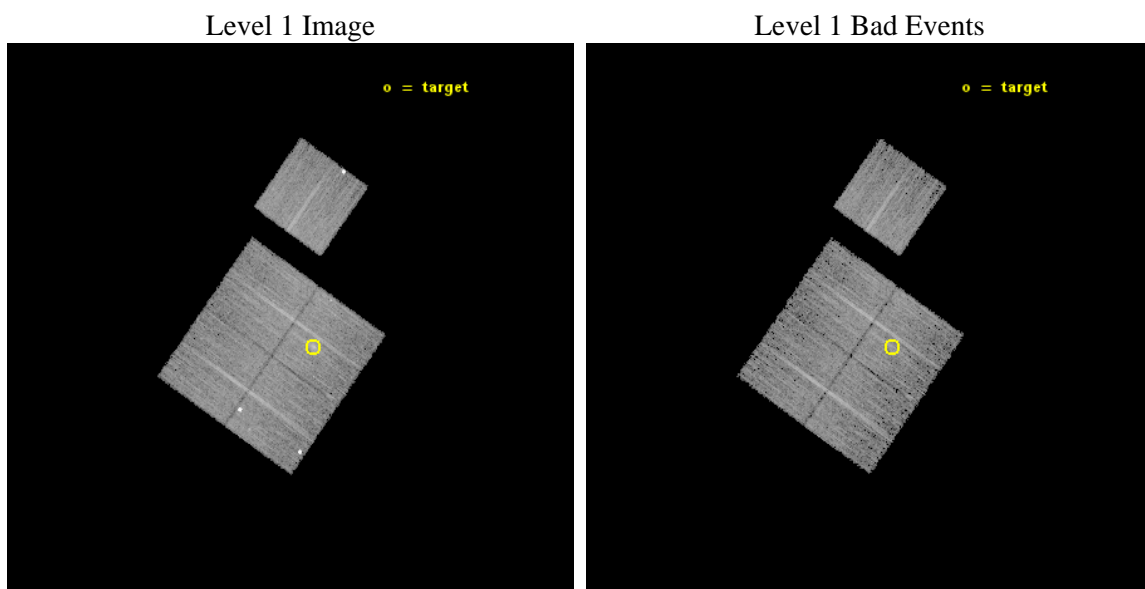
seq_num	801197	Sequence number
obs_id	15589	Observation id
title	A DETAILED CHANDRA/HST STUDY OF THE FIRST z approx 1 CLUSTER BLINDLY DISCOVERED IN THE PLANCK ALL SKY SURVEY	Proposal title
observer	Dr. Pasquale Mazzotta	Principal investigator
object	PLCKG266.6-27.3	Source name
dtcycle	0	
cycle	P	events from which exps? Prim/Second/Both
ra_targ	93.966667	Observer's specified target RA [deg]
dec_targ	-57.781	Observer's specified target Dec [deg]
ra_nom	94.043805707615	Nominal RA [deg]
dec_nom	-57.749256865802	Nominal Dec [deg]
roll_nom	35.173927713439	Nominal Roll [deg]
revision	2	Processing version of data
ontime	12085.570567906	Sum of GTIs [s]
livetime	11927.663691169	Livetime [s]
ontime0	12085.447447896	Sum of GTIs [s]
ontime1	12085.488487899	Sum of GTIs [s]
ontime2	12085.529527903	Sum of GTIs [s]
ontime3	12085.570567906	Sum of GTIs [s]
ontime6	12085.406407893	Sum of GTIs [s]
l2events	32163	Number of level 2 events



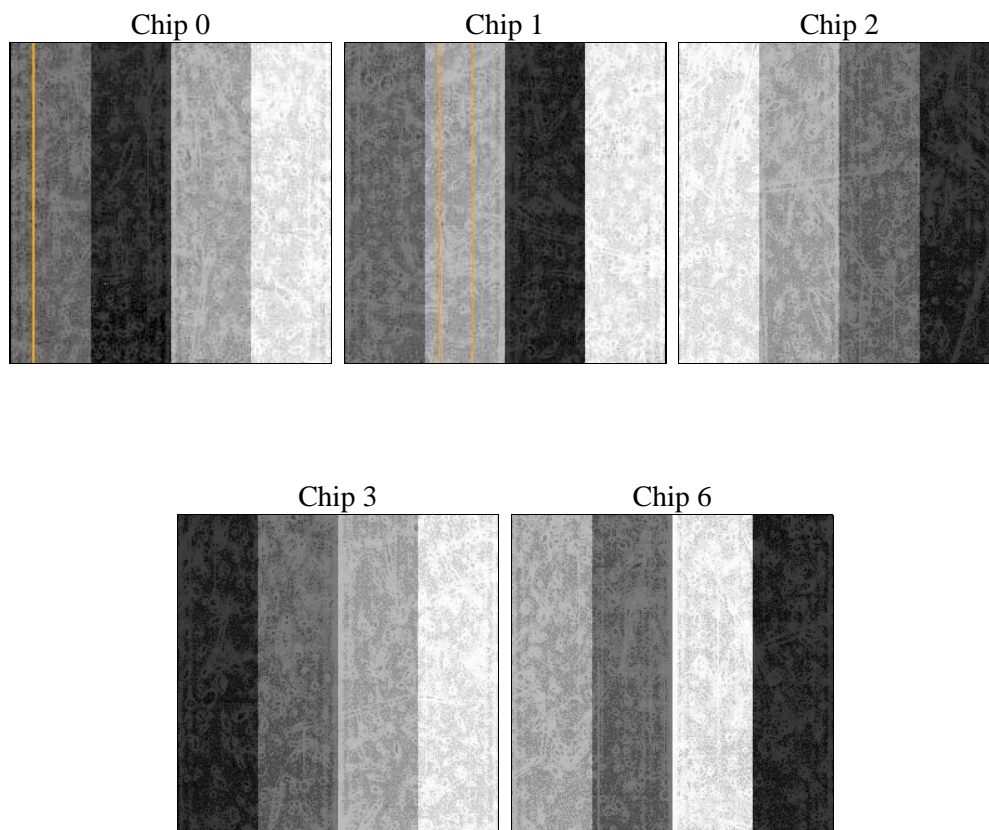
2 OBI

2.1 OBI

2.1.1 Images



2.1.2 Bias



2.1.3 Parameters

obi_num	1	Obi number	sched_exp_time	12000.000000	[s] Scheduled observation exposure time
ascdsver	10.3	Processing system revision	ontime	12085.570567906	Sum of GTIs [s]
caldsver	4.6.4	 	ontime0	12085.447447896	Sum of GTIs [s]
date	2014-11-29T20:30:12	Date and time of file creation	ontime1	12085.488487899	Sum of GTIs [s]
revision	2	Processing version of data	ontime2	12085.529527903	Sum of GTIs [s]
			ontime3	12085.570567906	Sum of GTIs [s]
			ontime6	12085.406407893	Sum of GTIs [s]
			l1events	296919	Number of level 1 events

2.1.4 Events

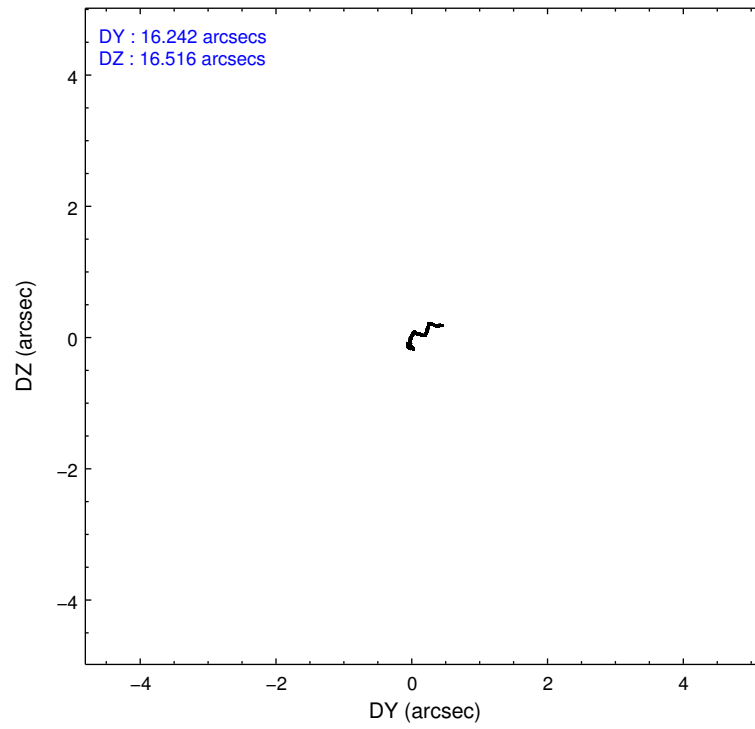
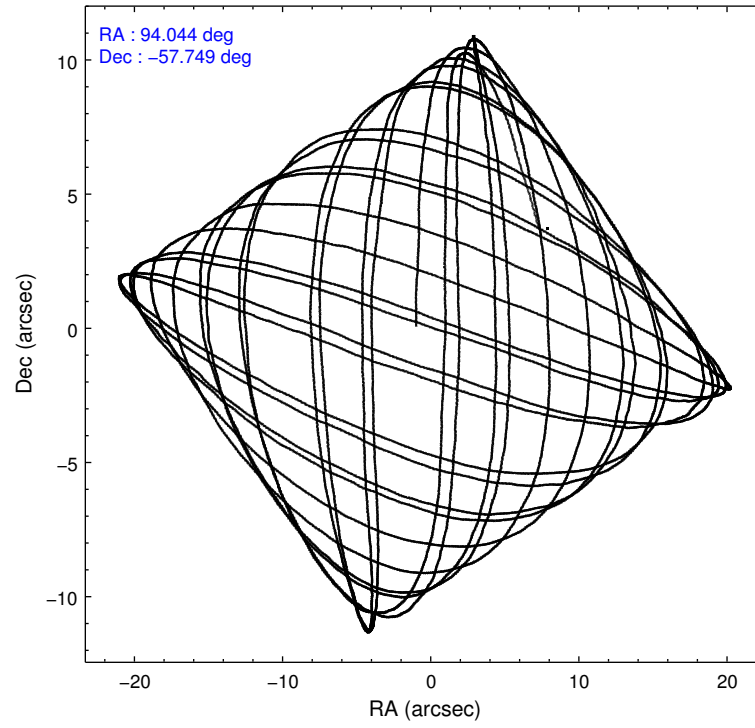
	ccd 0	ccd 1	ccd 2	ccd 3	ccd 6
level 1 events	54682	61797	57831	58694	63915
rejected events	47549	46610	50813	50329	52834
rejected %	86%	75%	87%	85%	82%

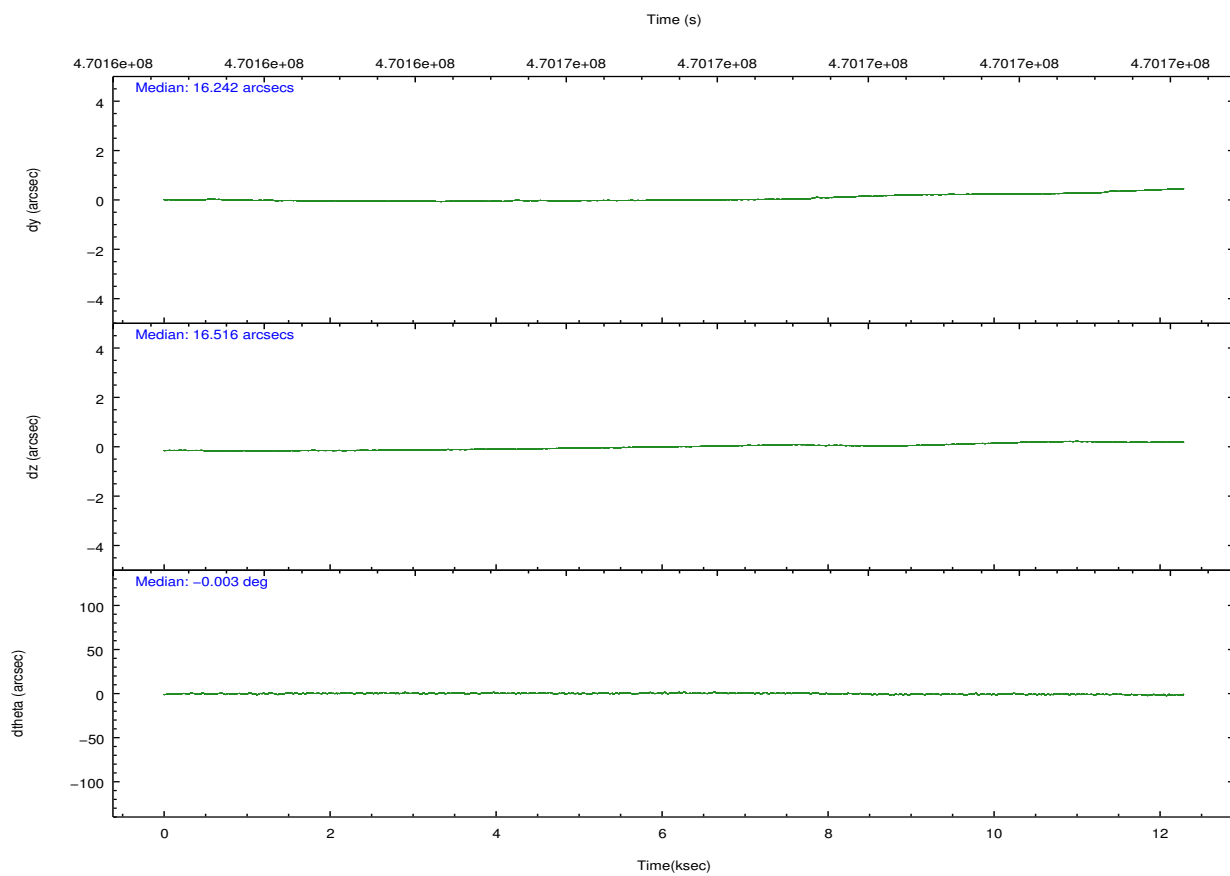
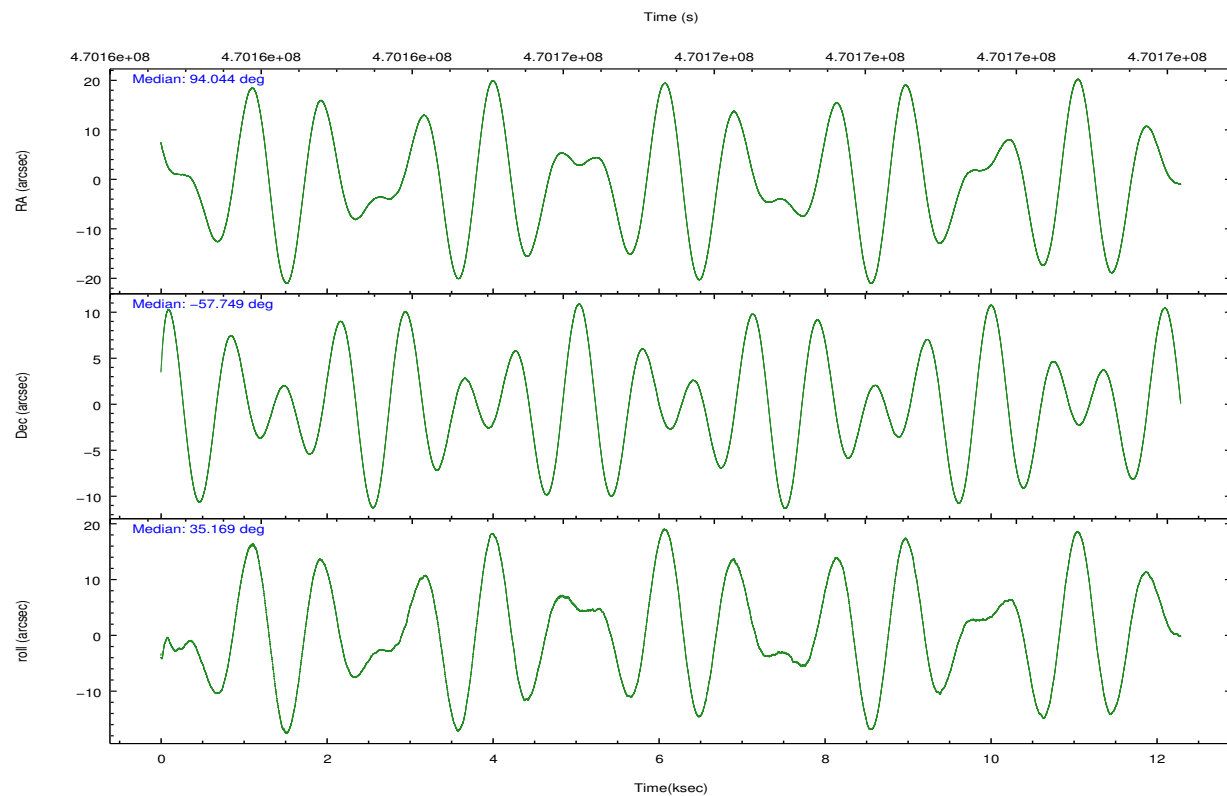
	ccd 0	ccd 1	ccd 2	ccd 3	ccd 6
grade 0 events	2468	10176	2437	3860	6321
	4%	16%	4%	6%	9%
grade 1 events	40	61	28	41	43
	0%	0%	0%	0%	0%
grade 2 events	1748	1815	1726	1606	1667
	3%	2%	2%	2%	2%
grade 3 events	755	744	724	783	744
	1%	1%	1%	1%	1%
grade 4 events	694	741	754	711	714
	1%	1%	1%	1%	1%
grade 5 events	2785	2789	2560	3203	3114
	5%	4%	4%	5%	4%
grade 6 events	1468	1715	1379	1406	1639
	2%	2%	2%	2%	2%
grade 7 events	44724	43756	48223	47084	49673
	81%	70%	83%	80%	77%

2.2 Compared Parameters

Parameter	Planned	Actual	Parameter	Planned	Actual
Instrument	ACIS	ACIS	Obspar format version number	7	7
Detector	ACIS-01236	ACIS-01236	Obspar file type	PREDICTED	ACTUAL
Grating	NONE	NONE	Obspar update status	NONE	UPDATED
Data mode	VFAINT	VFAINT	CCD I0 on	Y	Y
Observation mode	POINTING	POINTING	CCD I1 on	Y	Y
[deg] Pointing RA	94.022331	94.04380570761516	CCD I2 on	Y	Y
[deg] Pointing Dec	-57.774301	-57.74925686580157	CCD I3 on	Y	Y
[deg] Pointing Roll	34.947076	35.17392771343902	CCD S0 on	N	N
[mm] SIM focus pos	-0.782348	-0.7809083437167272	CCD S1 on	N	N
[mm] SIM defocus	0	0.001439871863259334	CCD S2 on	O1	Y
[mm] SIM translation stage pos	-225.842463	-225.8433433320239	CCD S3 on	N	N
[mm] SIM translation stage offset	-7.75	-7.749109670905796	CCD S4 on	N	N
[s] Observation start time (MET)	470161564.184000	470160572.60515	CCD S5 on	N	N
Observation start date	2012-11-24T16:24:57	2012-11-24T16:09:32	Number of optional ACIS chips dropped	0	0
[s] Observation end time (MET)	470173564.184000	470174572.56841	On-chip summing requested	N	N
Observation end date	2012-11-24T19:44:57	2012-11-24T20:02:52	Subarray requested	NONE	NONE
Read mode	TIMED	TIMED	Alternating exposures requested	N	N
			[s] Primary exposure time	0.000000	3.1

2.3 Aspect



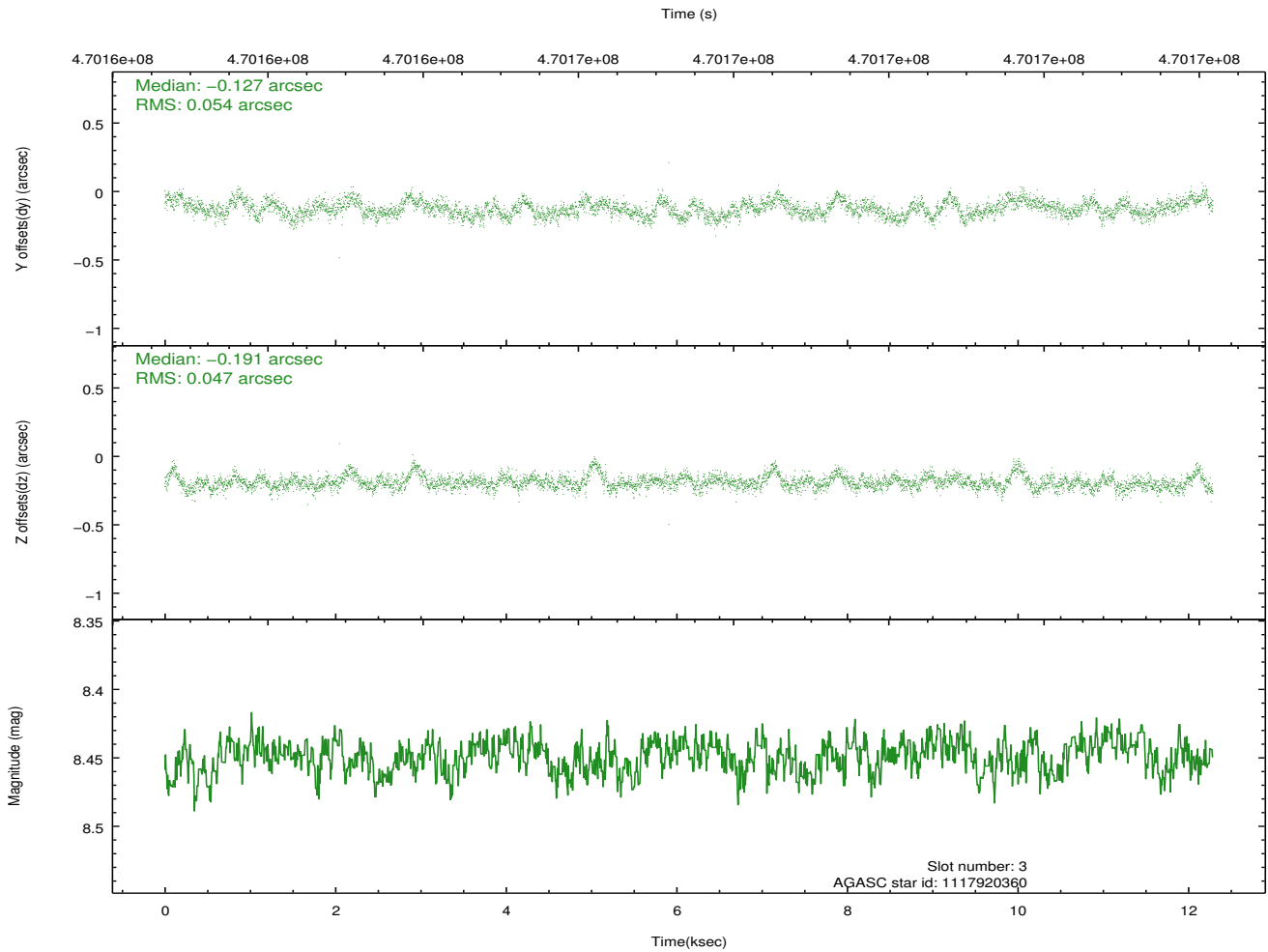
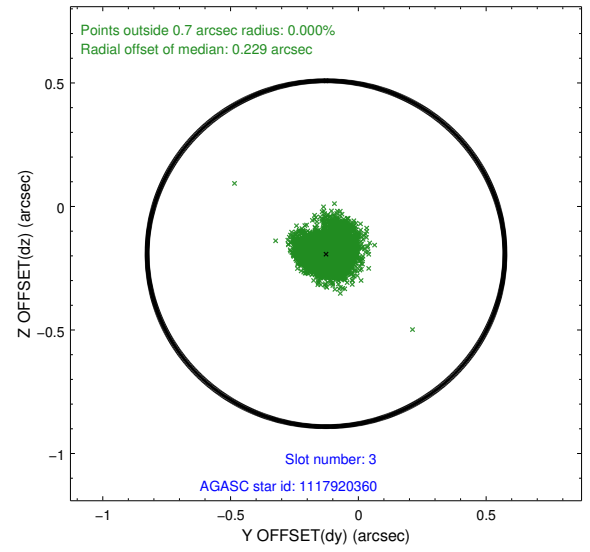
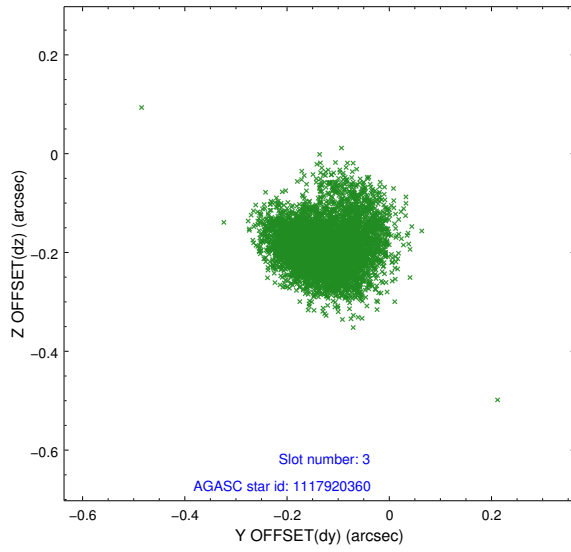


Slot Statistics

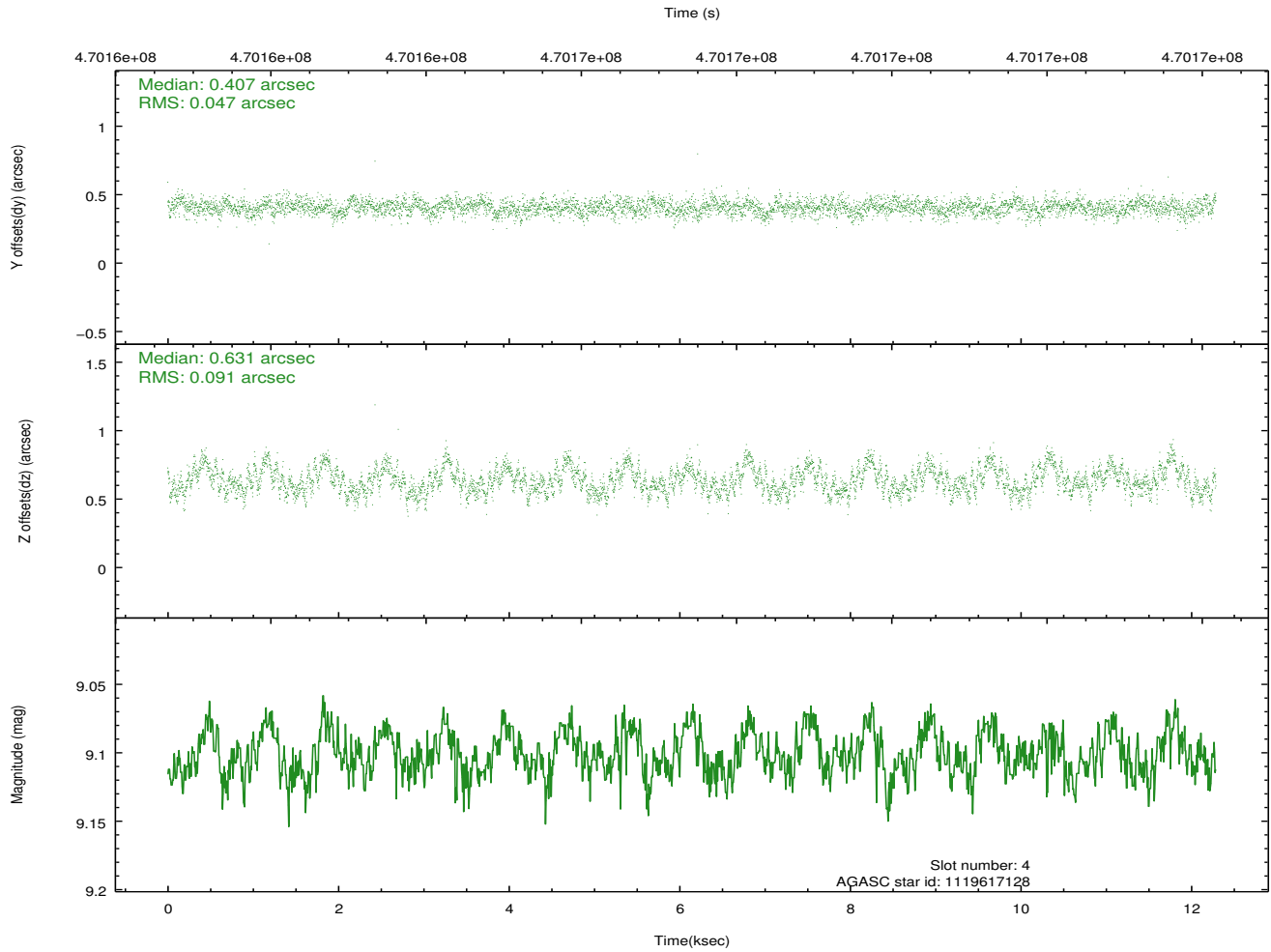
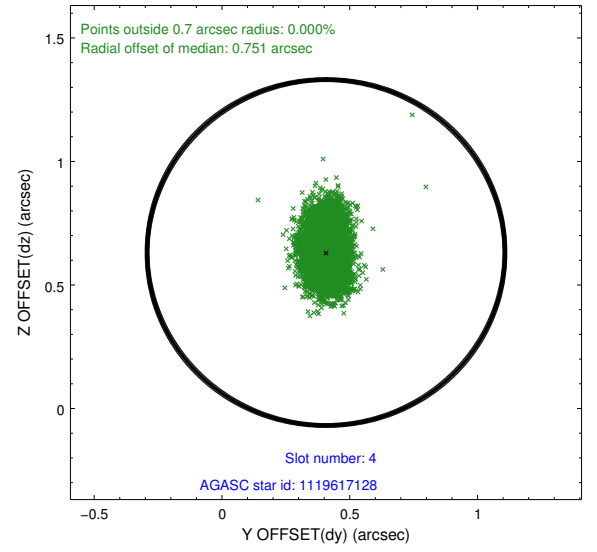
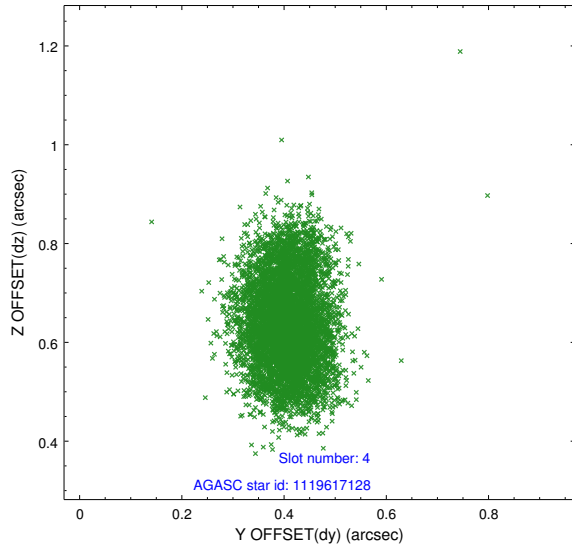
slot	status	used	id	mag	n_pts	med_dy	med_dz	dr1	dr2	ra	dec	mean_y	mean_z
0	FID		ACIS-I-1	7.15	2997	0.175	-0.140	0.010	0.021	0.000000	0.000000	923.15	-999.36
1	FID		ACIS-I-5	7.14	2997	-0.317	0.137	0.009	0.016	0.000000	0.000000	-1825.25	898.12
2	FID		ACIS-I-6	7.14	2997	0.051	0.073	0.009	0.017	0.000000	0.000000	388.09	1543.05
3	GUIDE	used	1117920360	8.45	5993	-0.127	-0.191	0.075	0.126	92.689586	-57.826981	-2216.95	1287.08
4	GUIDE	used	1119617128	9.10	5992	0.407	0.631	0.109	0.180	93.986624	-58.000911	-522.76	-628.75
5	GUIDE	used	1119617976	7.99	5993	-0.214	-0.283	0.085	0.140	94.543198	-57.336411	1730.37	709.50
6	GUIDE	used	1119620096	9.00	5990	-0.193	-0.001	0.090	0.149	94.803811	-58.054312	638.86	-1685.33
7	GUIDE	used	1119619792	9.41	5979	0.129	-0.166	0.124	0.191	93.499770	-57.916921	-1114.82	147.93

2.4 Star Slots

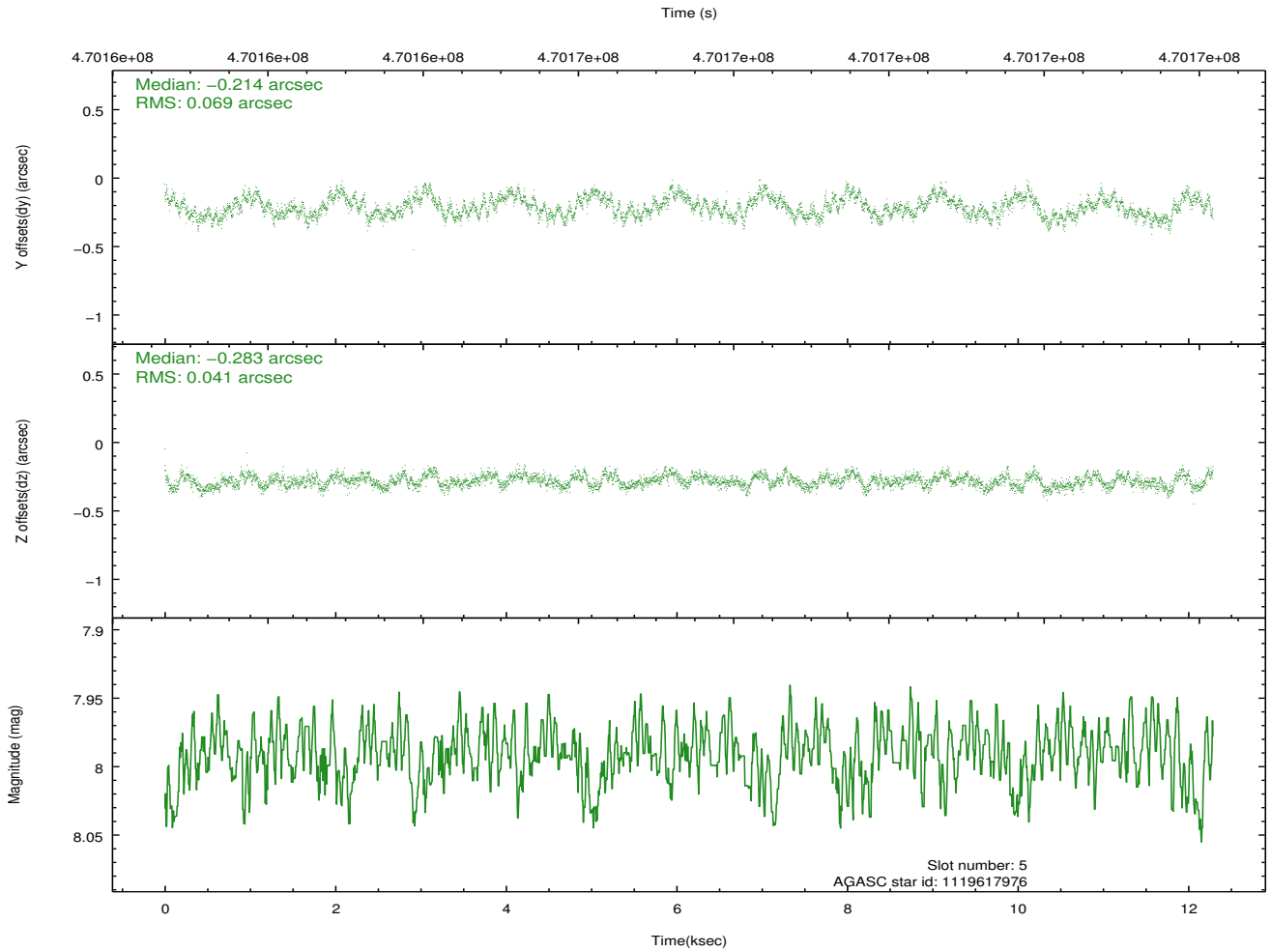
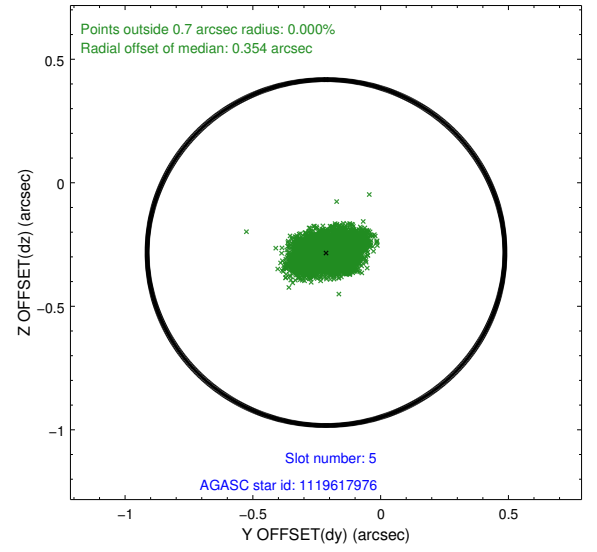
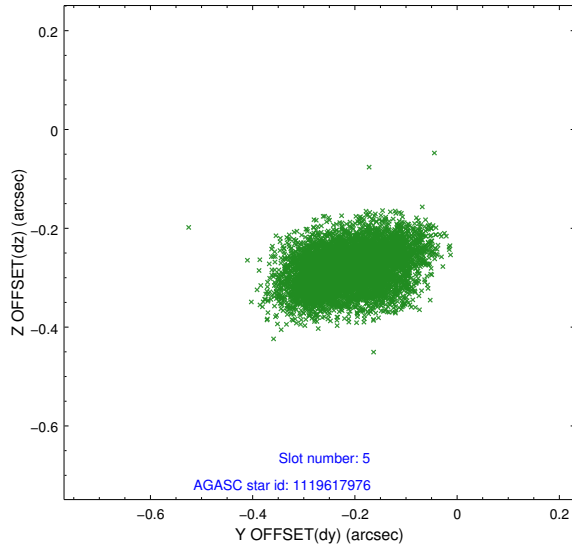
2.4.1 Slot 3



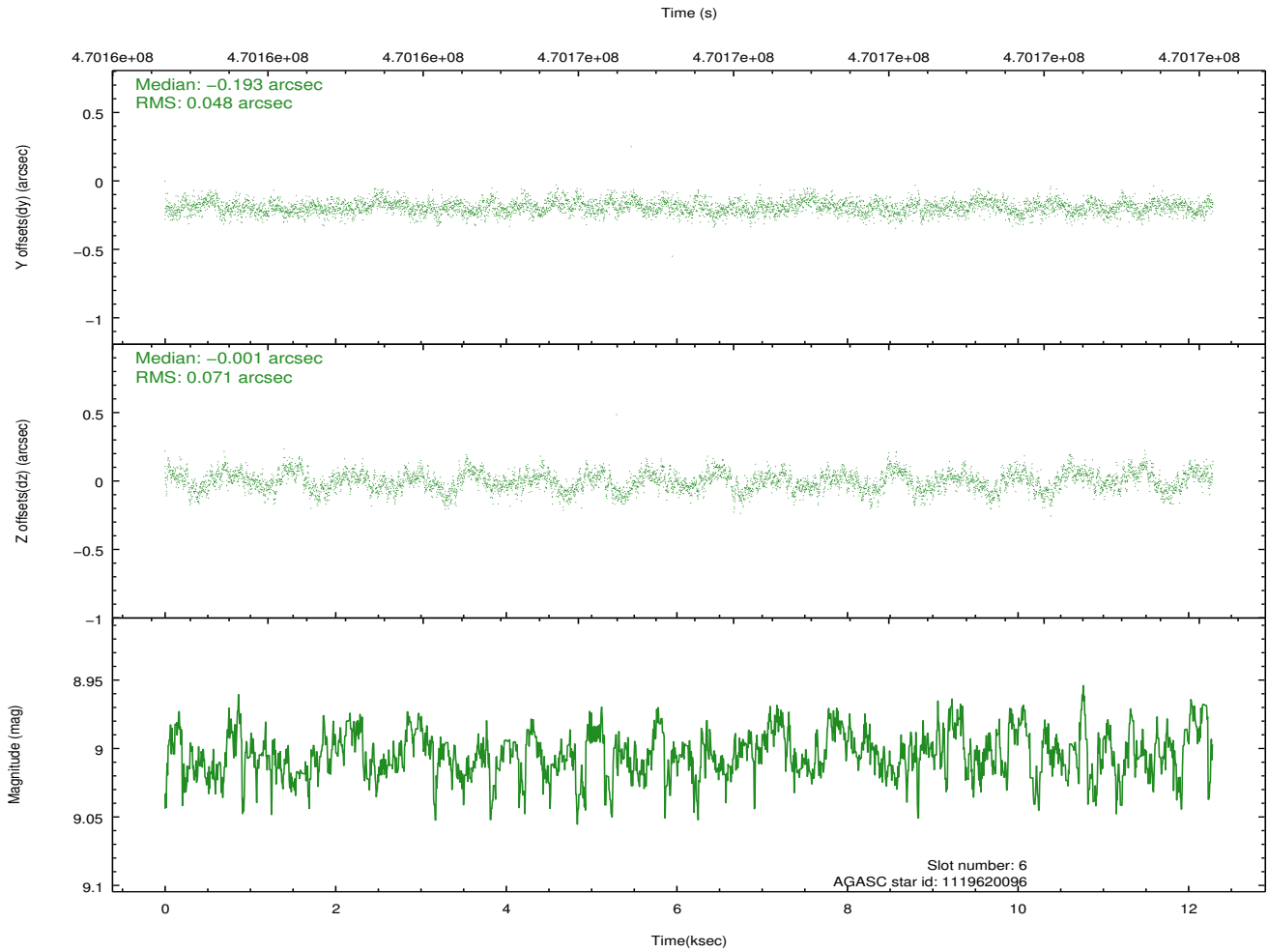
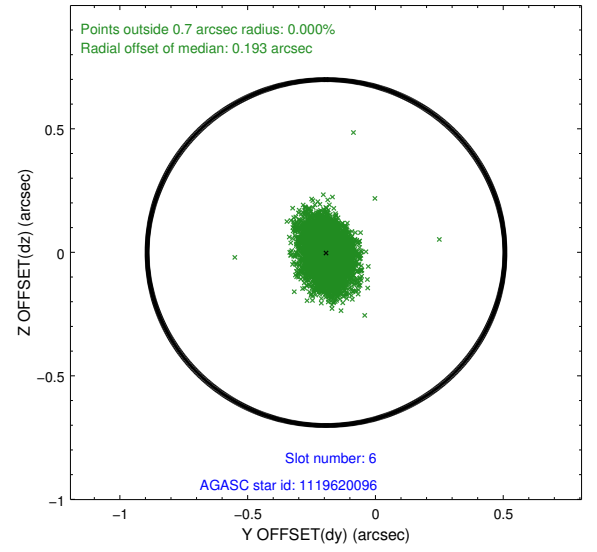
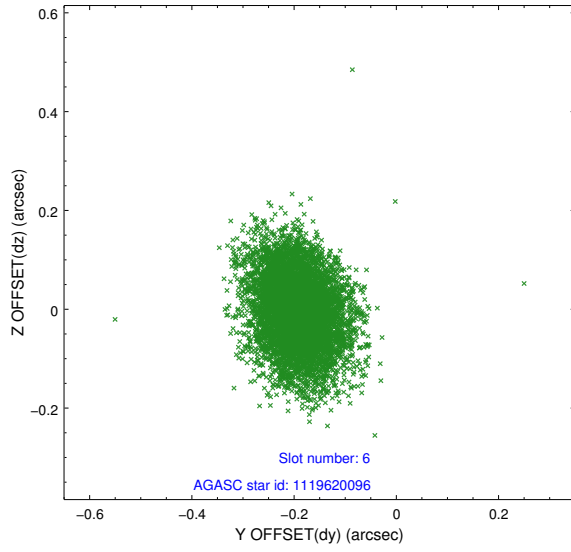
2.4.2 Slot 4



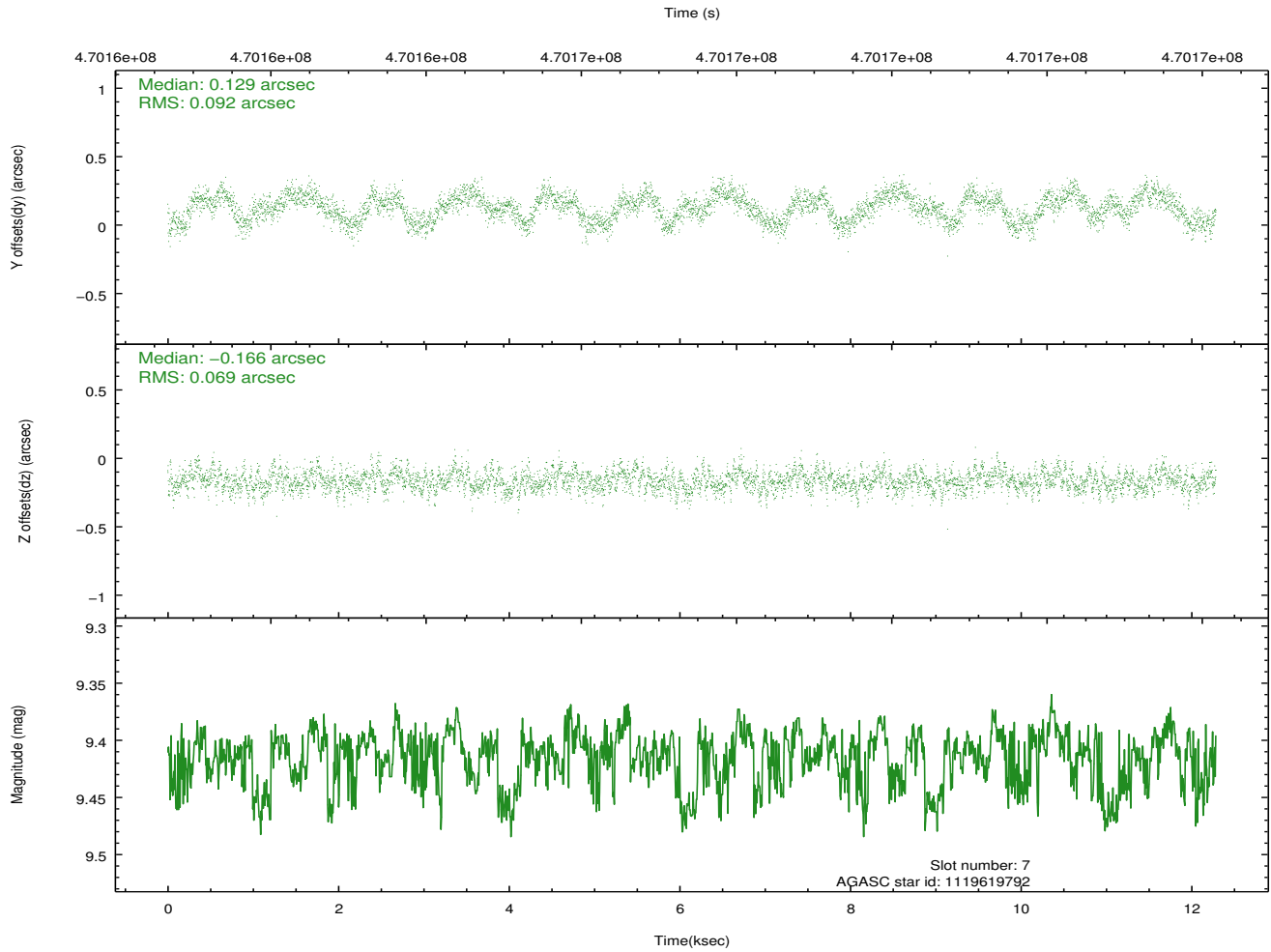
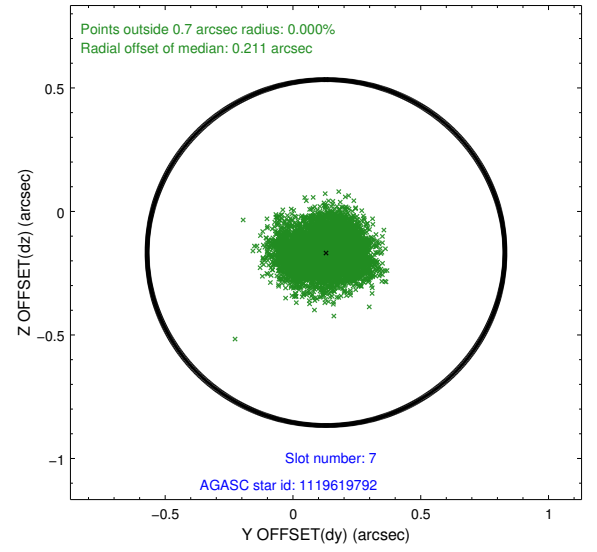
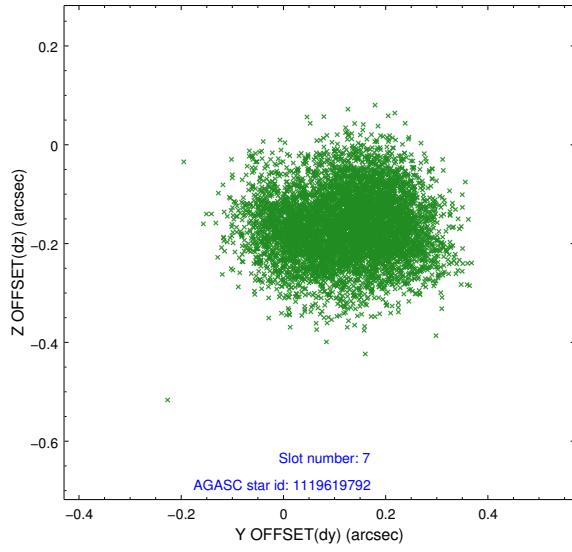
2.4.3 Slot 5



2.4.4 Slot 6

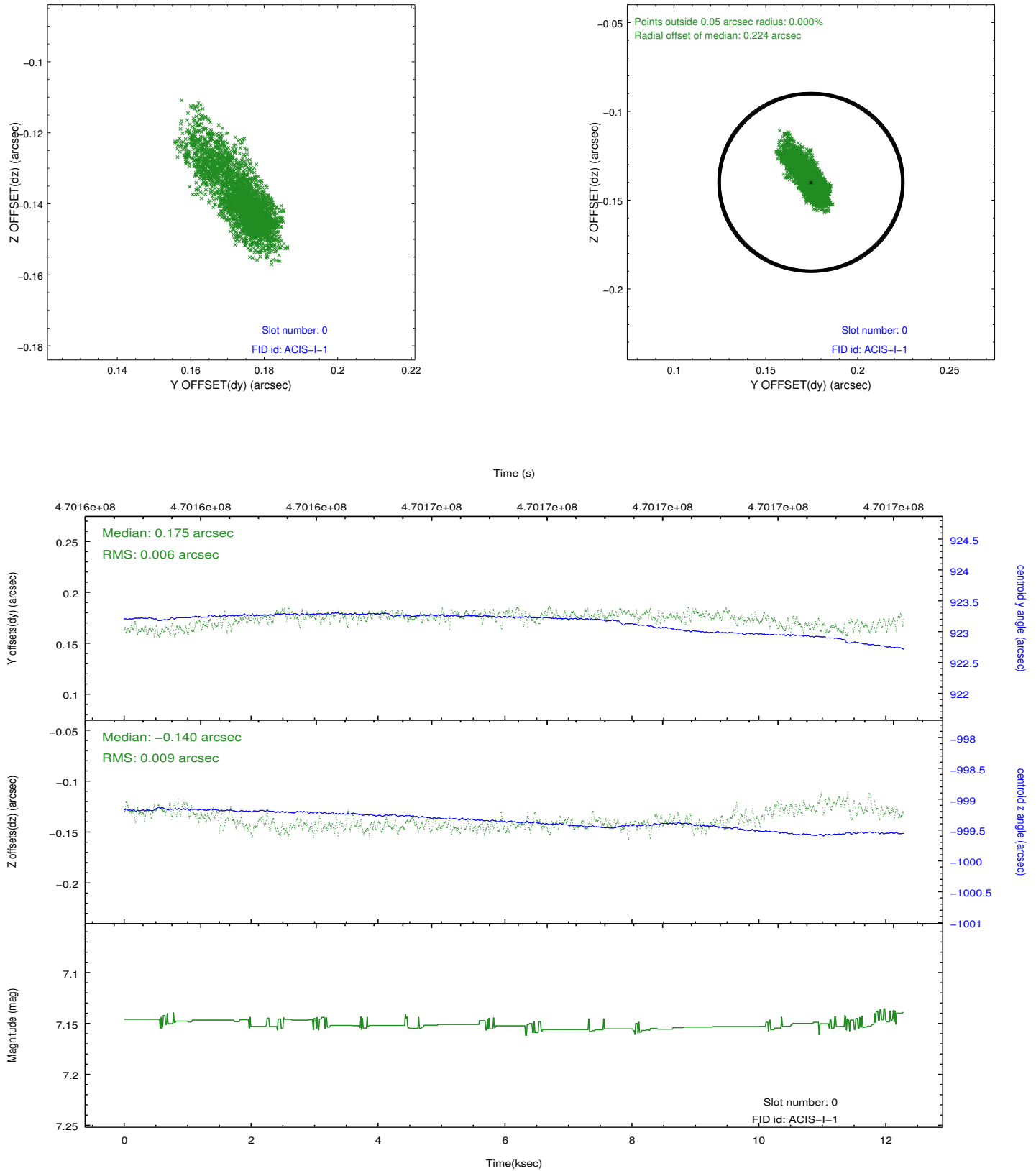


2.4.5 Slot 7

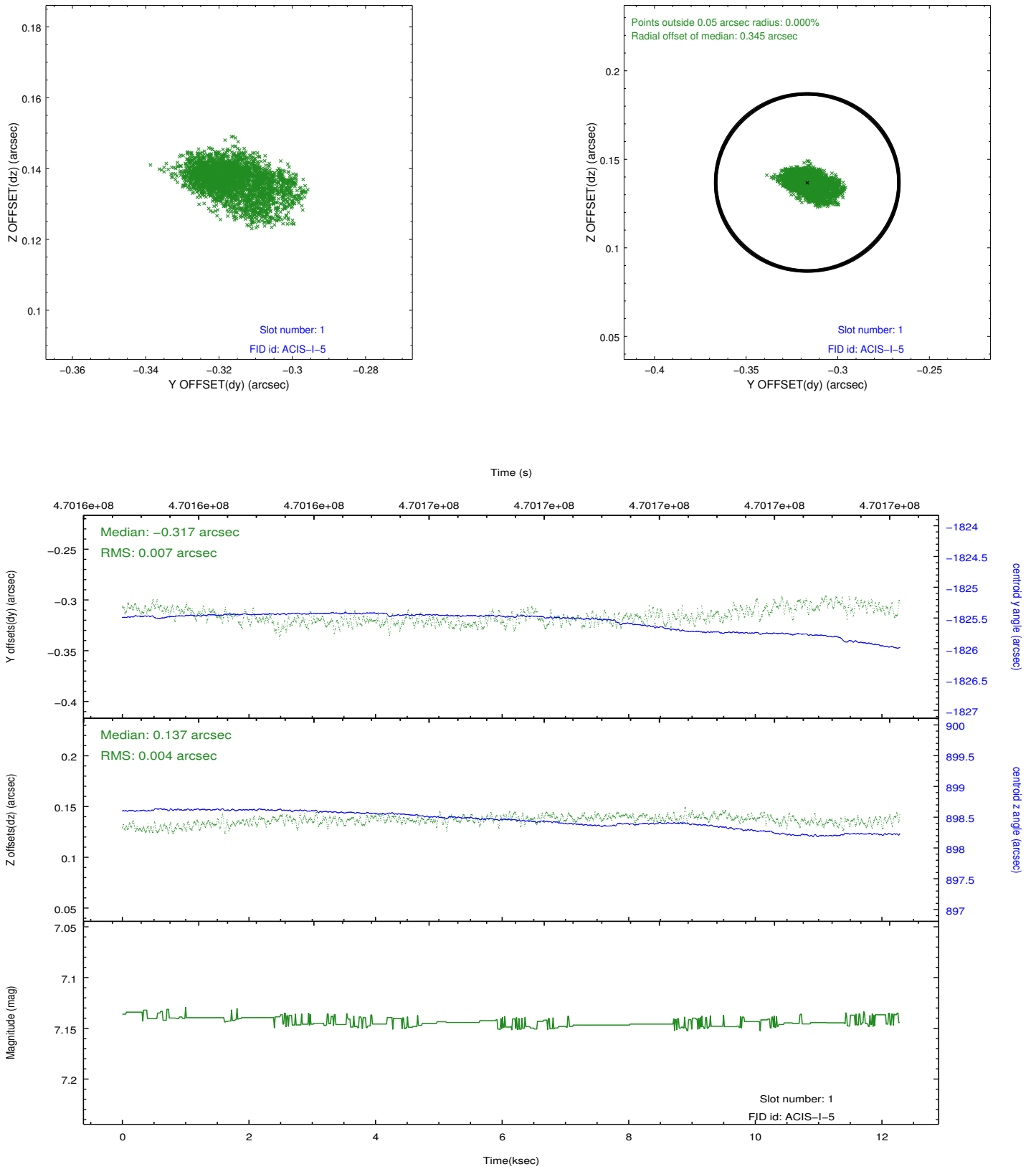


2.5 FID Slots

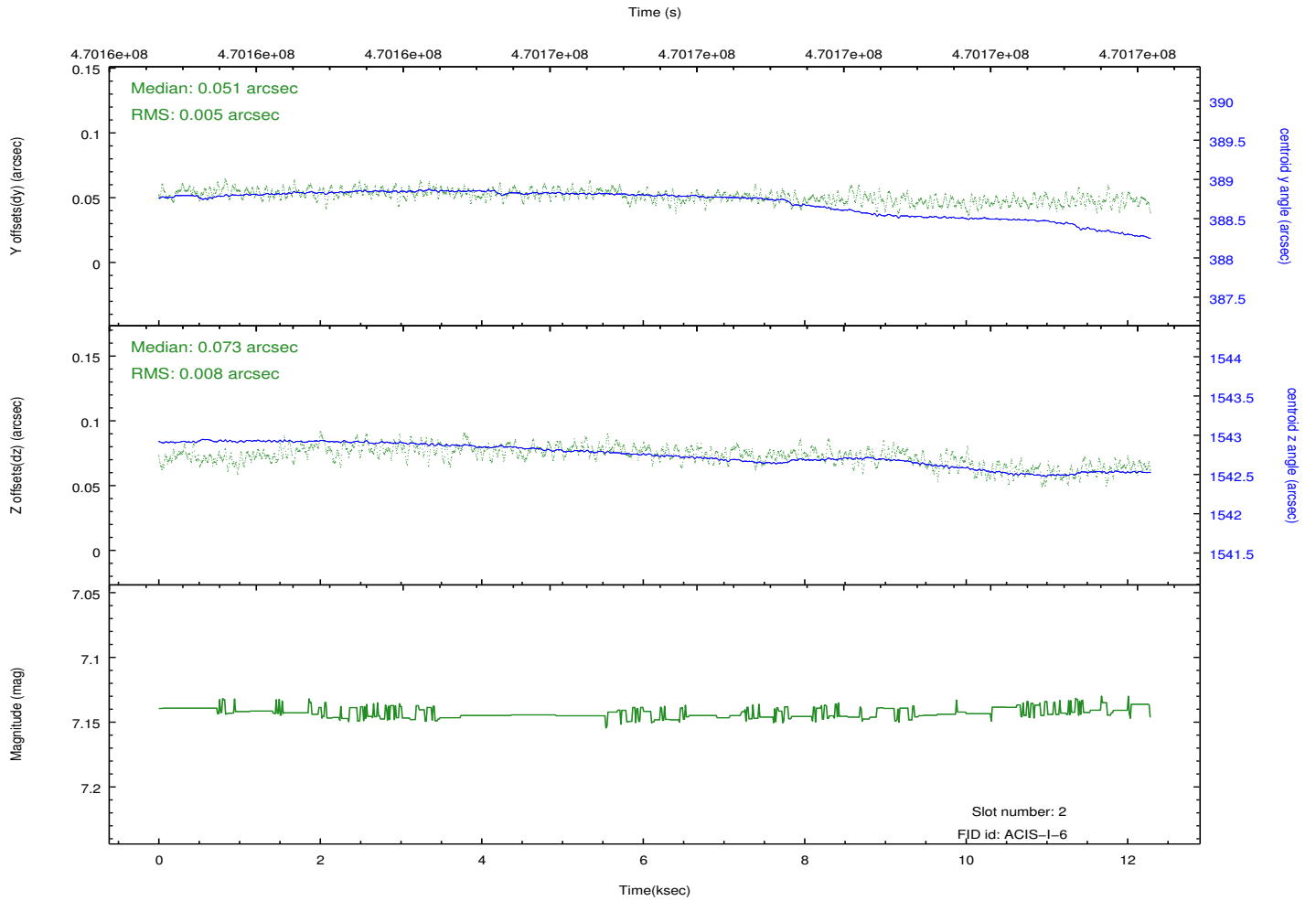
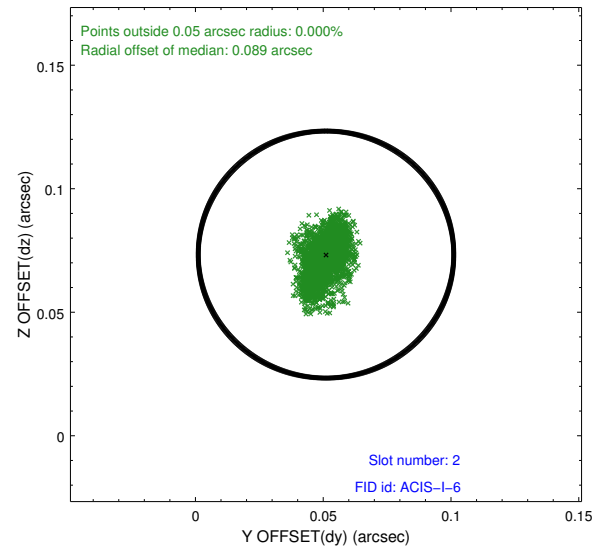
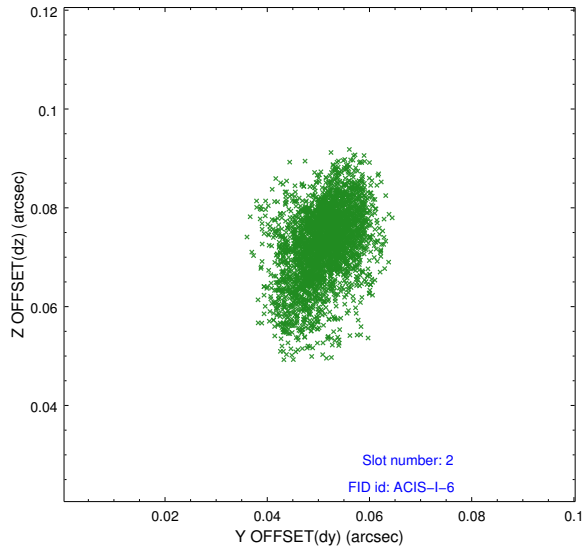
2.5.1 Slot 0



2.5.2 Slot 1



2.5.3 Slot 2



A Summary

A.1 Status

V&V Scientist	Beth Sundheim
V&V Date (YYYY-MM-DD)	2014.12.03
V&V Edition	1
V&V Disposition and Status	OK
V&V Charge Time	12.085570567906

A.2 Comments

Joint proposal with HST.

These data have been reprocessed with new aspect alignment calibration files that correct small mean offsets (up to 0.4 arcsecs) and improve overall astrometric accuracy. The new calibration was determined using data from the time period being reprocessed and was performed using cross-correlation of X-ray sources with radio and optical counterparts.