

V&V Reference Report

L2 ASCDS Version : 8.4.4

Observation 13988 - L2 Version 1
Chandra X-Ray Center

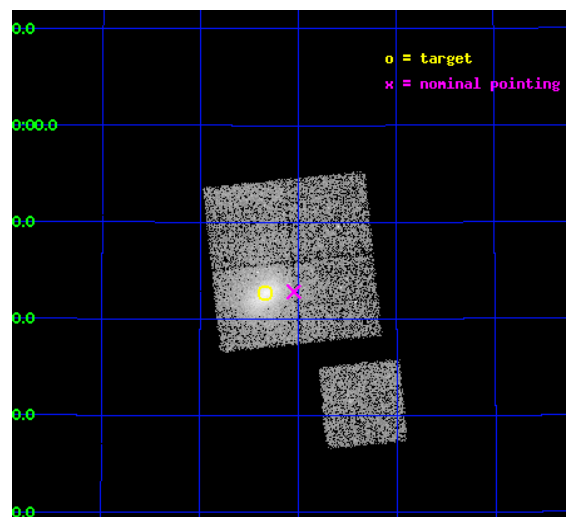
L2 Processing Date : May 27 2012

Contents

1	Front	2
2	OBI	3
2.1	OBI	3
2.1.1	Images	3
2.1.2	Bias	3
2.1.3	Parameters	4
2.1.4	Events	4
2.2	Compared Parameters	5
2.3	Aspect	6
2.4	Star Slots	9
2.4.1	Slot 3	9
2.4.2	Slot 4	10
2.4.3	Slot 5	11
2.4.4	Slot 6	12
2.4.5	Slot 7	13
2.5	FID Slots	14
2.5.1	Slot 0	14
2.5.2	Slot 1	15
2.5.3	Slot 2	16
A	Summary	17
A.1	Status	17
A.2	Comments	17

1 Front

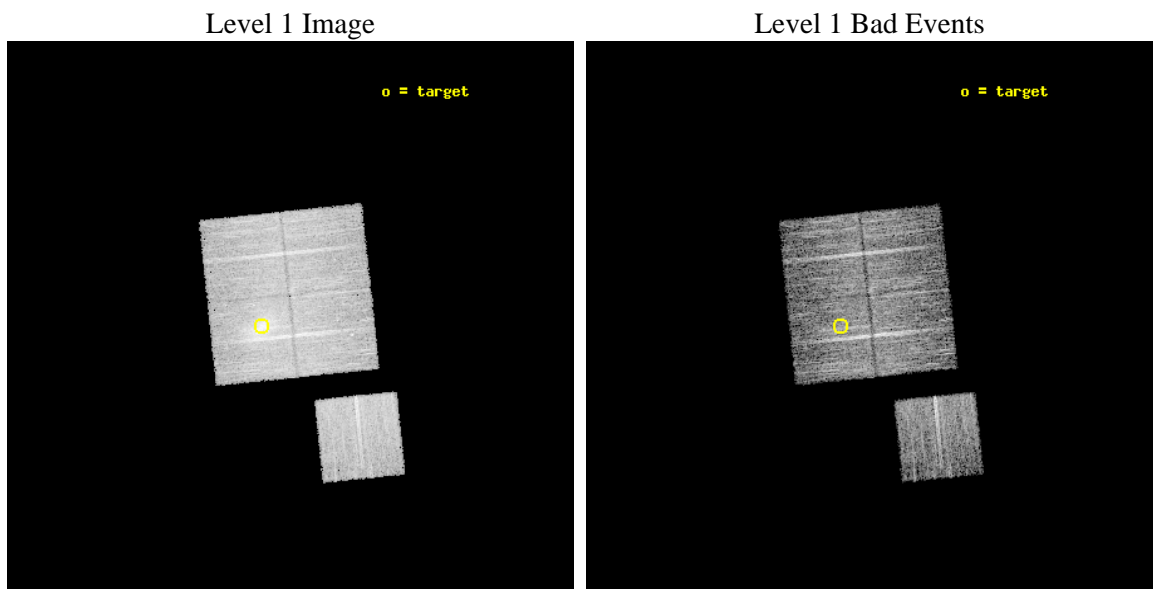
seq_num	801168	Sequence number
obs_id	13988	Observation id
title	A Chandra Study of the Large-Scale Shock Front in Abell 2219	Propo
observer	Prof. Steven Allen	Principal investigator
object	Abell 2219	Source name
dtcycle	0	
cycle	P	events from which exps? Prim/Second/Both
ra_targ	250.083333	Observer's specified target RA [deg]
dec_targ	46.710833	Observer's specified target Dec [deg]
ra_nom	250.01139814972	Nominal RA [deg]
dec_nom	46.713697218019	Nominal Dec [deg]
roll_nom	174.06104634872	Nominal Roll [deg]
revision	1	Processing version of data
ontime	10080.808469713	Sum of GTIs [s]
livetime	9949.0952856727	Livetime [s]
ontime0	10077.544339359	Sum of GTIs [s]
ontime1	10080.726389706	Sum of GTIs [s]
ontime2	10080.767429709	Sum of GTIs [s]
ontime3	10080.808469713	Sum of GTIs [s]
ontime6	10080.6443097	Sum of GTIs [s]
l2events	45838	Number of level 2 events



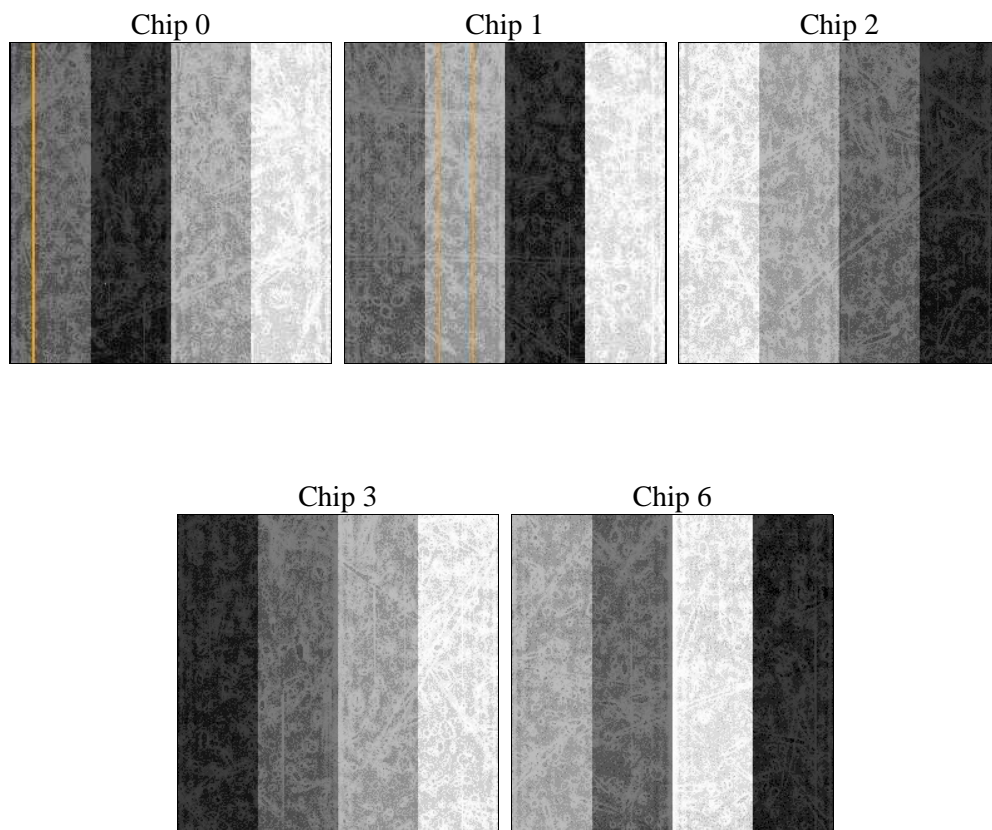
2 OBI

2.1 OBI

2.1.1 Images



2.1.2 Bias



2.1.3 Parameters

obi_num	0	Obi number	sched_exp_time	10000.973000	[s] Scheduled observation exposure time
ascdsver	8.4.4	Processing system revision	ontime	10080.808469713	Sum of GTIs [s]
caldsver	4.4.9	 	ontime0	10077.544339359	Sum of GTIs [s]
date	2012-05-27T05:33:28	Date and time of file creation	ontime1	10080.726389706	Sum of GTIs [s]
revision	1	Processing version of data	ontime2	10080.767429709	Sum of GTIs [s]
			ontime3	10080.808469713	Sum of GTIs [s]
			ontime6	10080.6443097	Sum of GTIs [s]
			l1events	304201	Number of level 1 events

2.1.4 Events

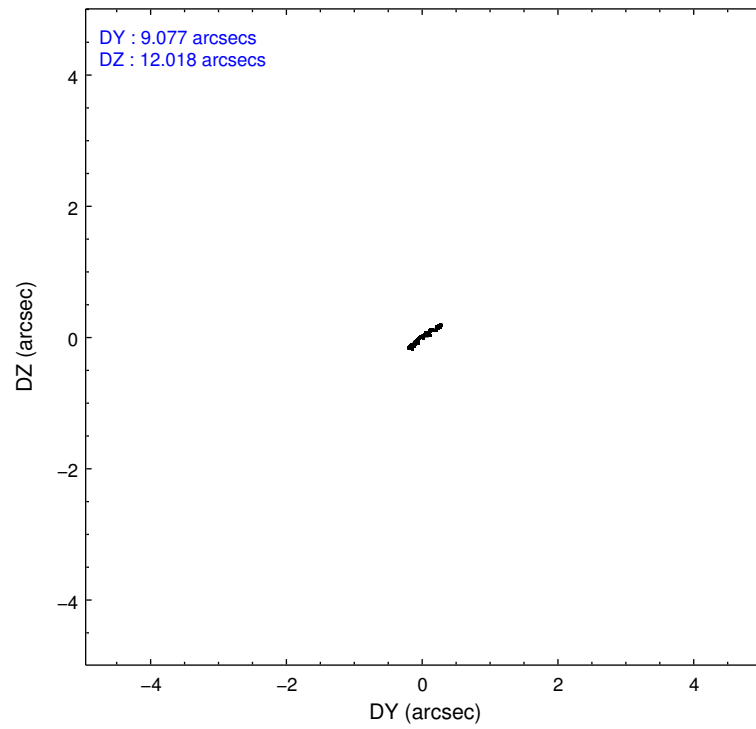
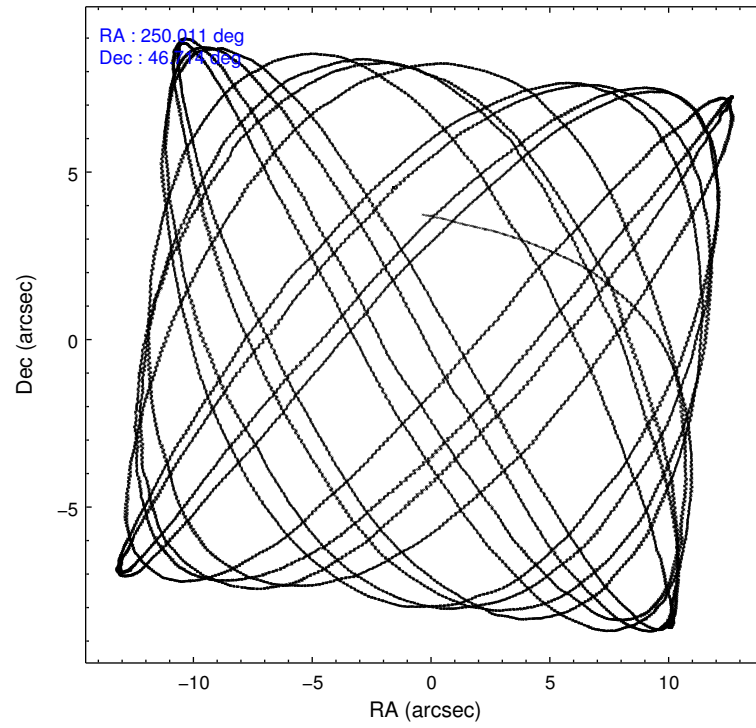
	ccd 0	ccd 1	ccd 2	ccd 3	ccd 6
level 1 events	55026	56444	60651	74116	57964
rejected events	47964	47975	53193	52130	51144
rejected %	87%	84%	87%	70%	88%

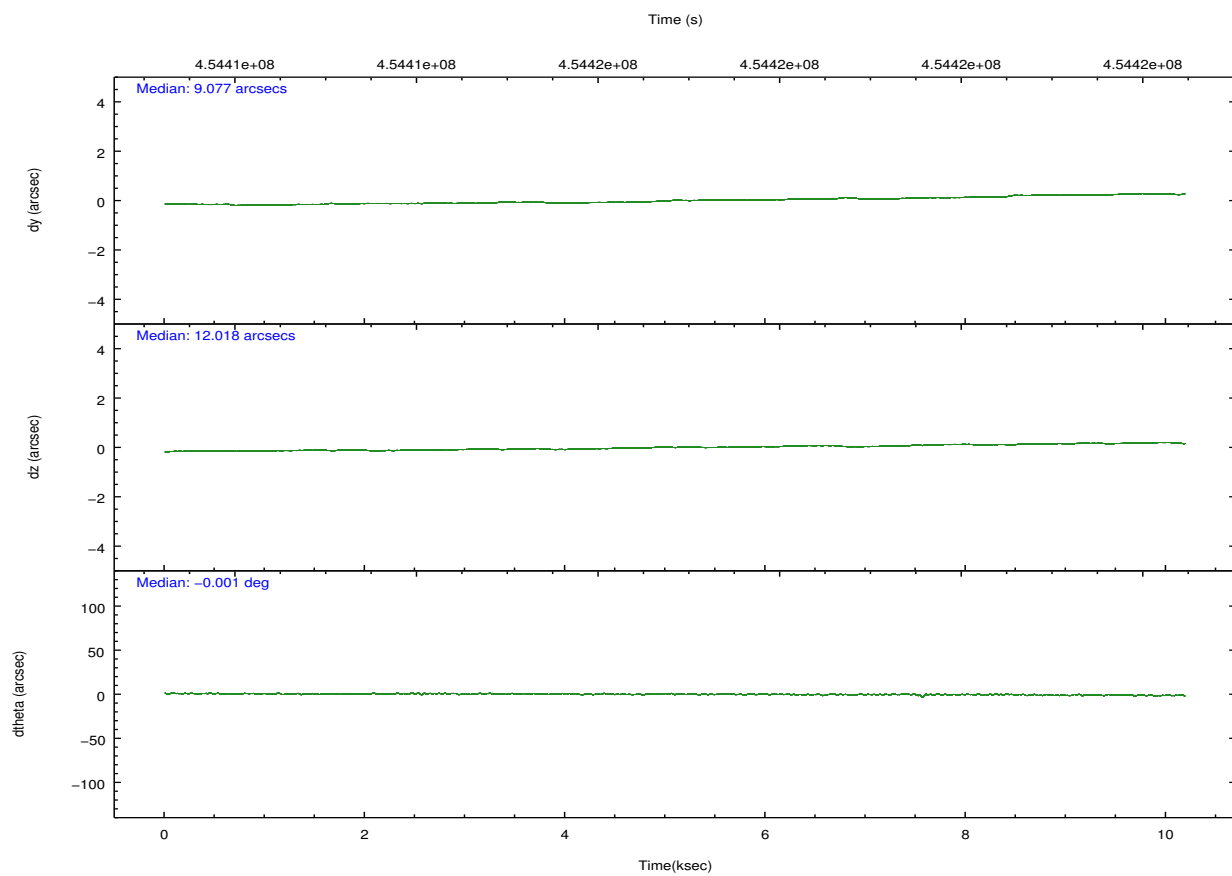
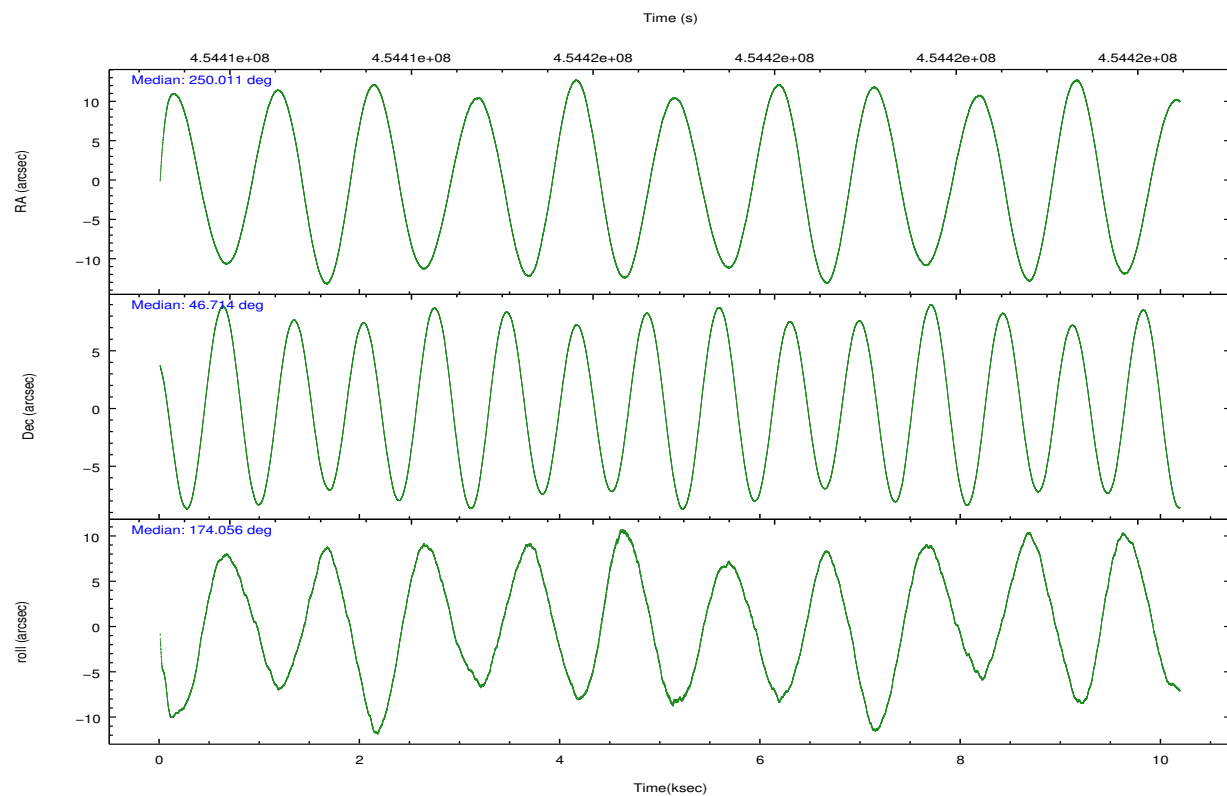
	ccd 0	ccd 1	ccd 2	ccd 3	ccd 6
grade 0 events	2472	3294	3149	14722	2326
	4%	5%	5%	19%	4%
grade 1 events	32	37	32	84	36
	0%	0%	0%	0%	0%
grade 2 events	1697	1937	1638	3026	1498
	3%	3%	2%	4%	2%
grade 3 events	753	831	674	1159	713
	1%	1%	1%	1%	1%
grade 4 events	739	805	709	1157	712
	1%	1%	1%	1%	1%
grade 5 events	2667	2952	2442	3007	2835
	4%	5%	4%	4%	4%
grade 6 events	1402	1610	1293	1935	1574
	2%	2%	2%	2%	2%
grade 7 events	45264	44978	50714	49026	48270
	82%	79%	83%	66%	83%

2.2 Compared Parameters

Parameter	Planned	Actual	Parameter	Planned	Actual
Instrument	ACIS	ACIS	Obspar format version number	7	7
Detector	ACIS-01236	ACIS-01236	Obspar file type	PREDICTED	ACTUAL
Grating	NONE	NONE	Obspar update status	NONE	UPDATED
Data mode	VFAINT	VFAINT	CCD I0 on	Y	Y
Observation mode	POINTING	POINTING	CCD I1 on	Y	Y
[deg] Pointing RA	250.047924	250.0113981497161	CCD I2 on	Y	Y
[deg] Pointing Dec	46.725035	46.71369721801947	CCD I3 on	Y	Y
[deg] Pointing Roll	173.825765	174.0610463487221	CCD S0 on	N	N
[mm] SIM focus pos	-0.782348	-0.7809083437167272	CCD S1 on	N	N
[mm] SIM defocus	0	0.001439871863259334	CCD S2 on	O1	Y
[mm] SIM translation stage pos	-226.292463	-226.2883771404	CCD S3 on	N	N
[mm] SIM translation stage offset	-7.3	-7.304075862529686	CCD S4 on	N	N
[s] Observation start time (MET)	454411937.184000	454410727.72859	CCD S5 on	N	N
Observation start date	2012-05-26T09:31:11	2012-05-26T09:12:07	Number of optional ACIS chips dropped	0	0
[s] Observation end time (MET)	454421938.184000	454422173.3917	On-chip summing requested	N	N
Observation end date	2012-05-26T12:17:52	2012-05-26T12:22:53	Subarray requested	NONE	NONE
Read mode	TIMED	TIMED	Alternating exposures requested	N	N
			[s] Primary exposure time	0.000000	3.1

2.3 Aspect



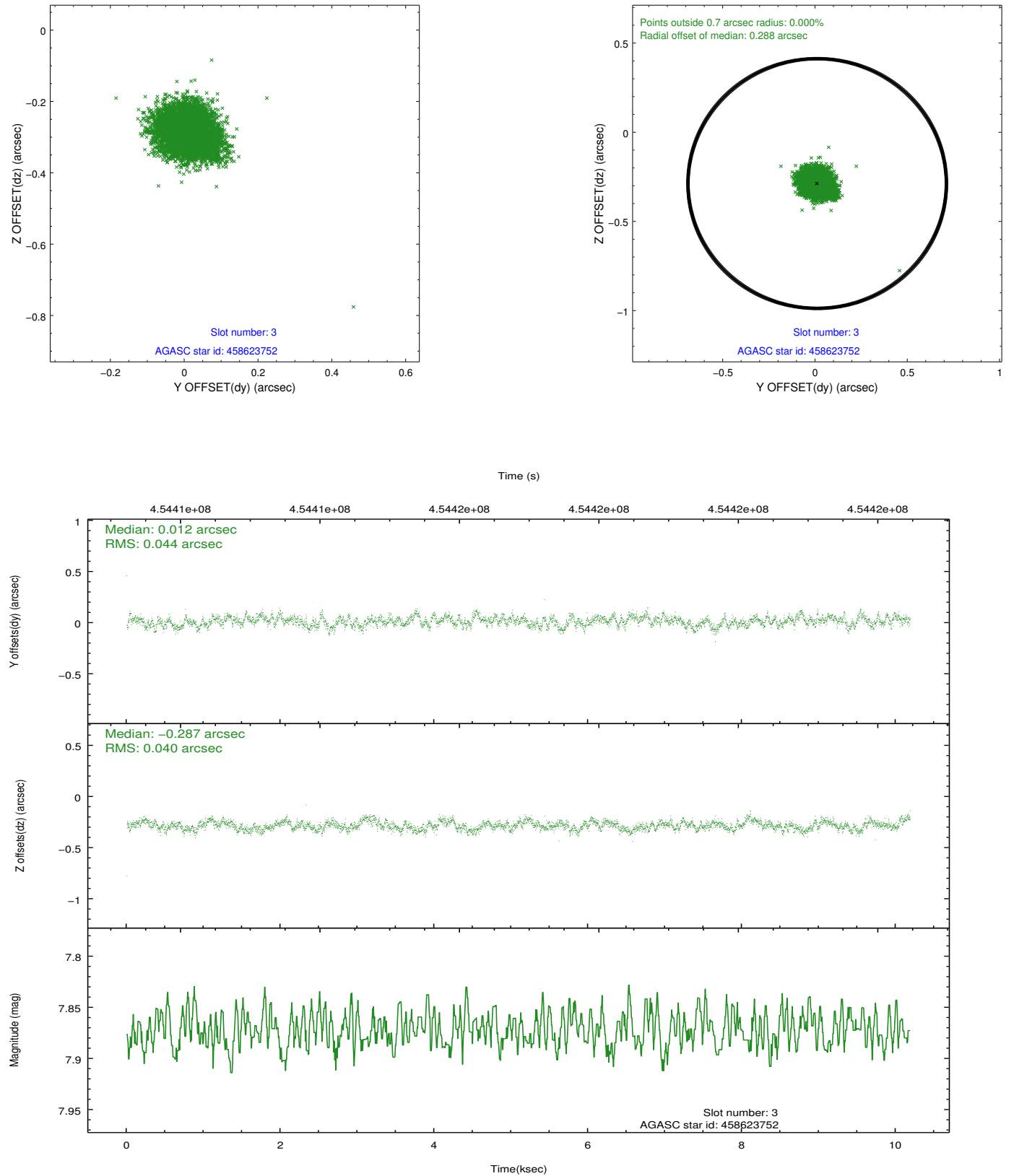


Slot Statistics

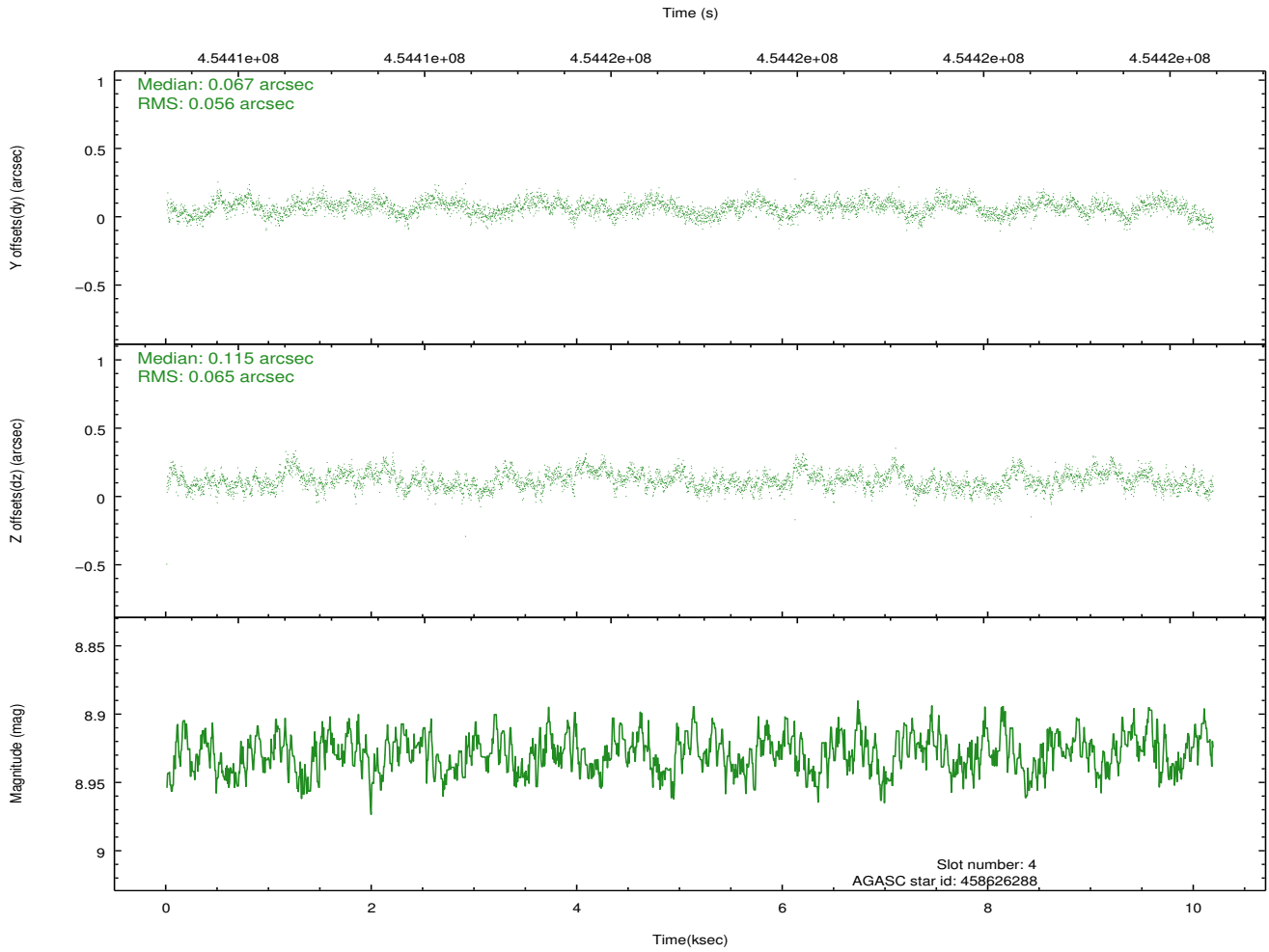
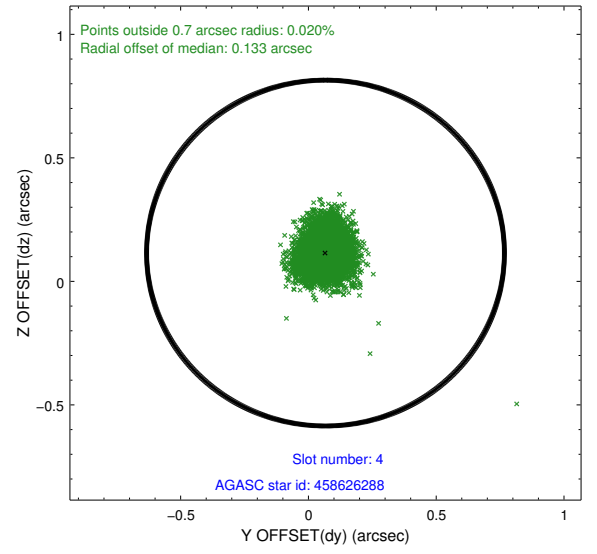
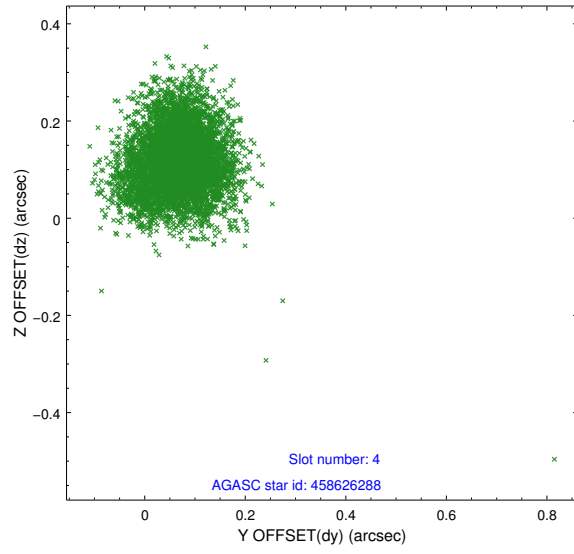
slot	status	id	mag	n_pts	med_dy	med_dz	dr1	dr2	ra	dec	mean_y	mean_z
0	FID	ACIS-I-1	7.09	2484	0.138	-0.101	0.007	0.013	0.000000	0.000000	930.52	-985.59
1	FID	ACIS-I-5	7.10	2485	-0.314	0.106	0.007	0.011	0.000000	0.000000	-1817.71	911.83
2	FID	ACIS-I-6	7.11	2484	0.084	0.066	0.008	0.012	0.000000	0.000000	395.50	1556.85
3	GUIDE	458623752	7.87	4968	0.012	-0.287	0.063	0.100	249.631548	46.393849	900.01	1293.63
4	GUIDE	458626288	8.93	4965	0.067	0.115	0.091	0.145	250.637186	47.079533	-1297.56	-1429.10
5	GUIDE	458630992	8.83	4969	0.028	-0.189	0.102	0.152	249.097154	46.610030	2295.51	651.30
6	GUIDE	458622504	7.93	4969	-0.260	0.086	0.064	0.103	249.027856	46.364222	2381.74	1548.13
7	GUIDE	458621584	9.46	4959	0.164	0.284	0.157	0.284	250.487899	47.371755	-814.75	-2432.55

2.4 Star Slots

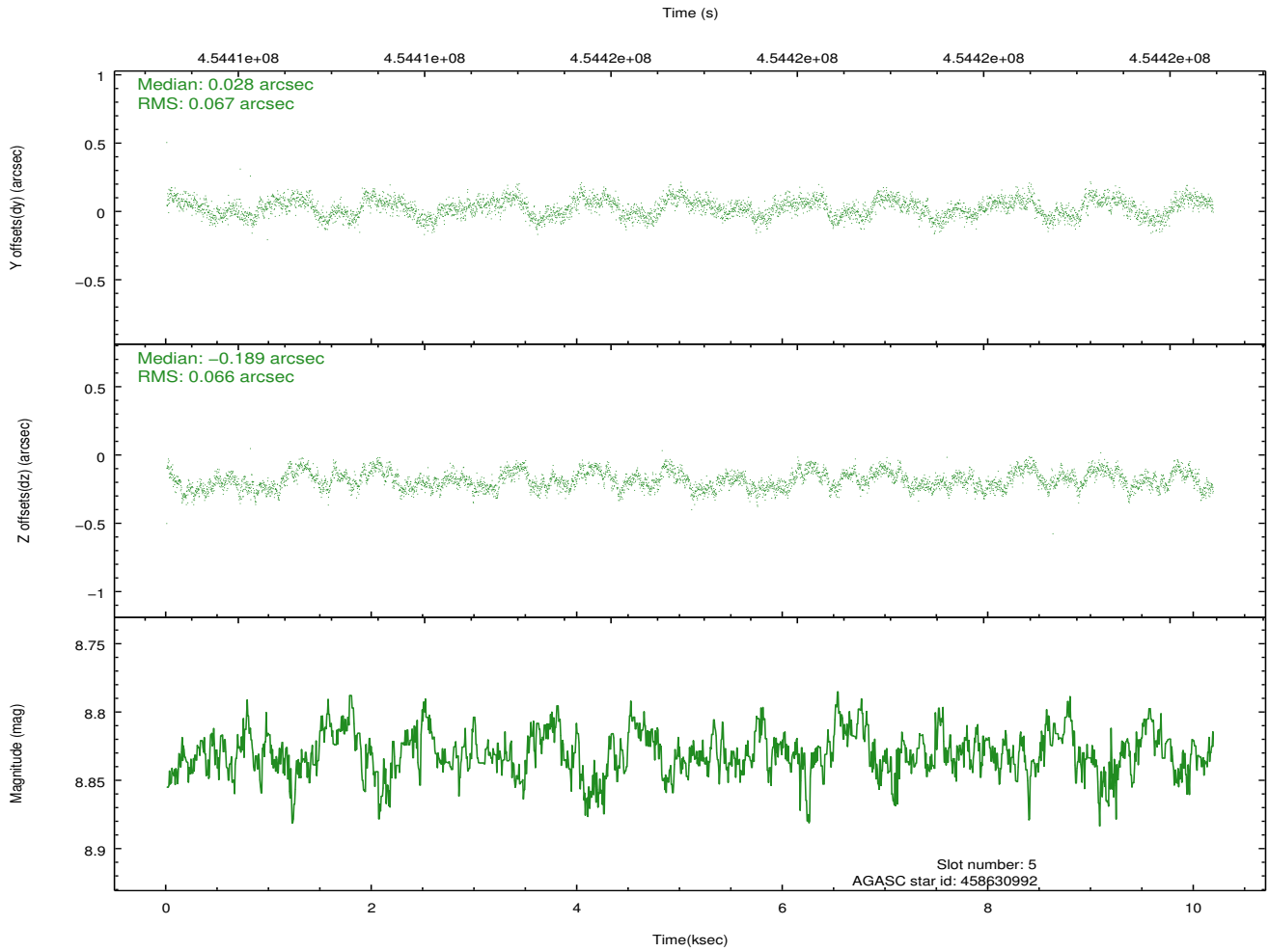
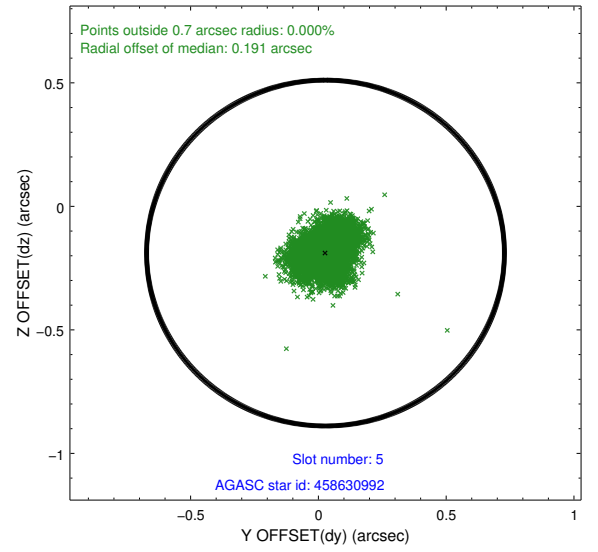
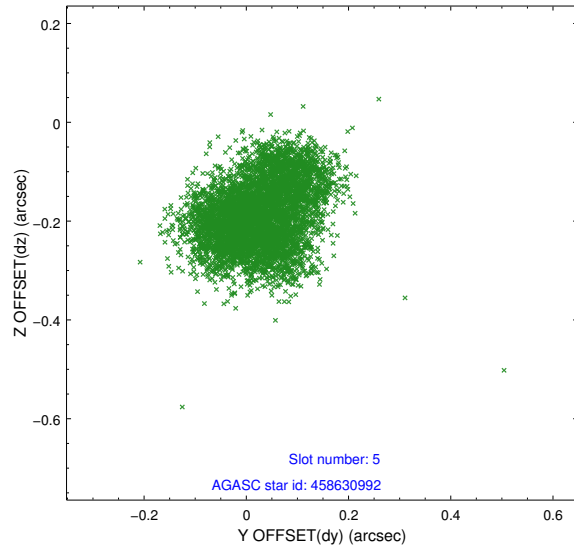
2.4.1 Slot 3



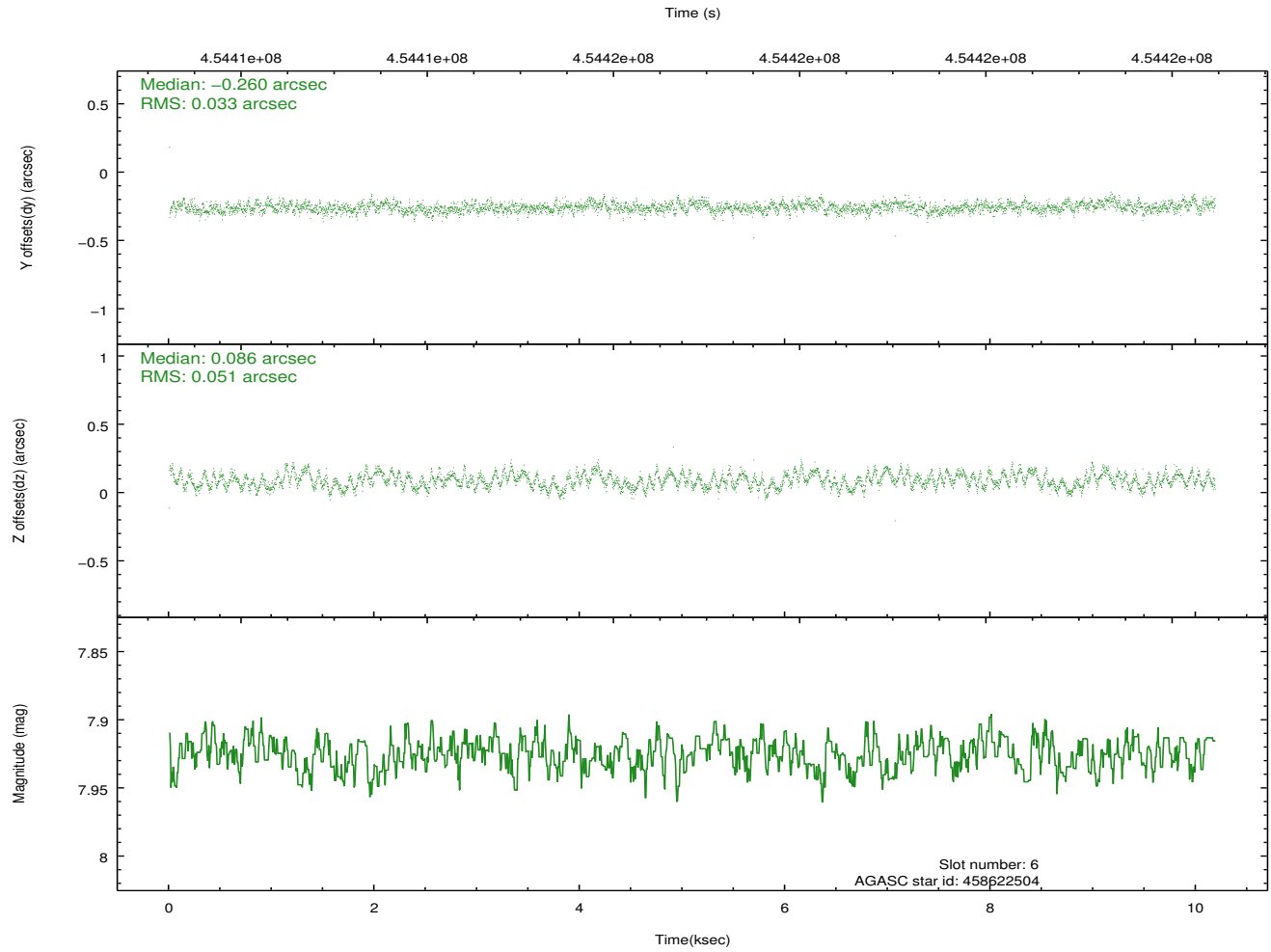
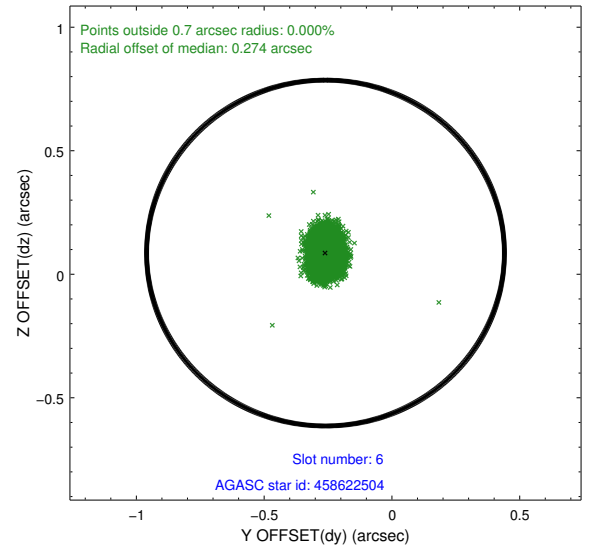
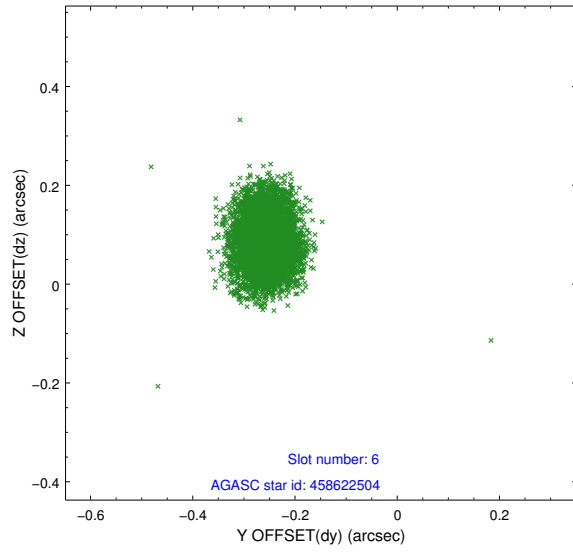
2.4.2 Slot 4



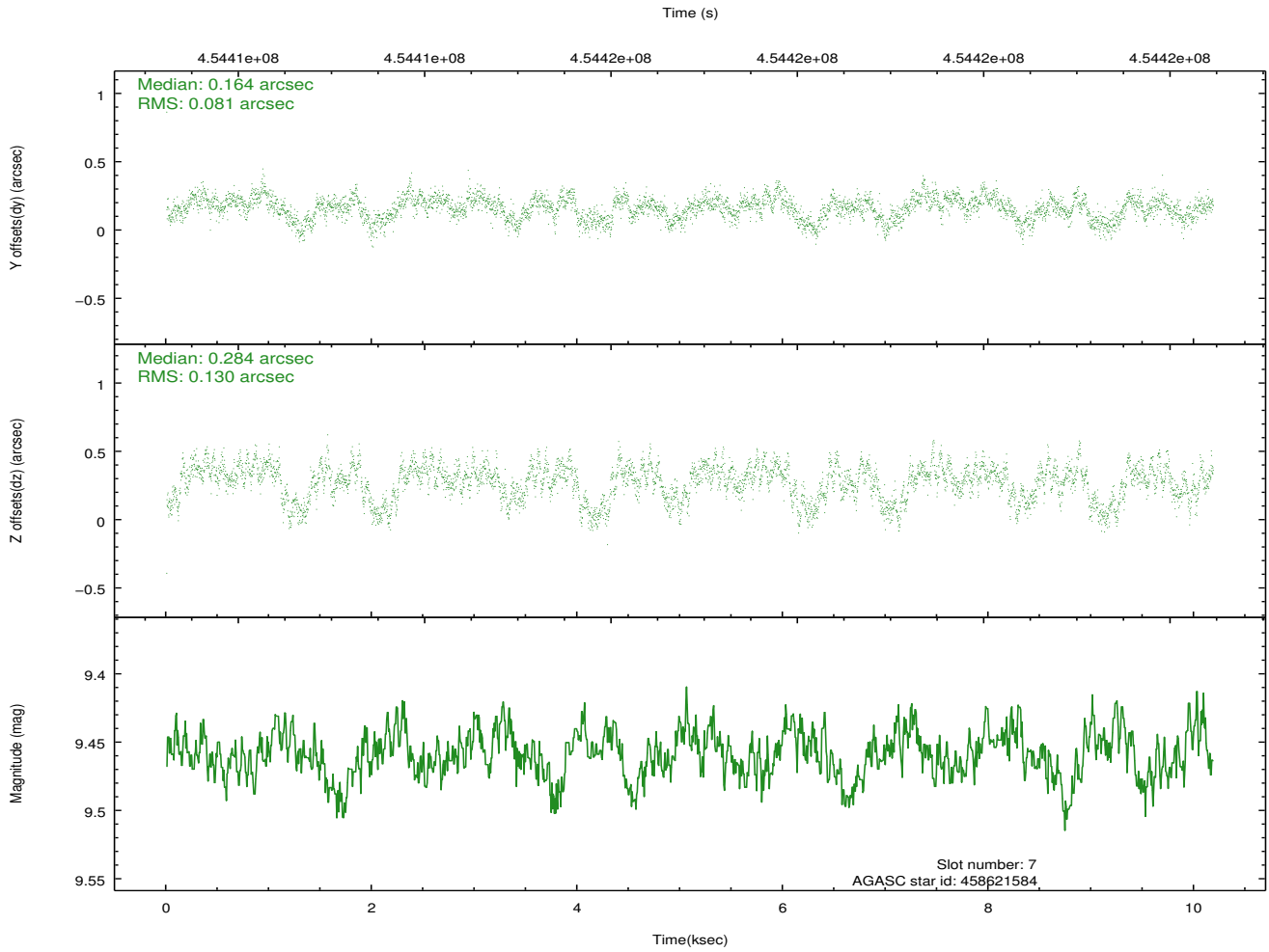
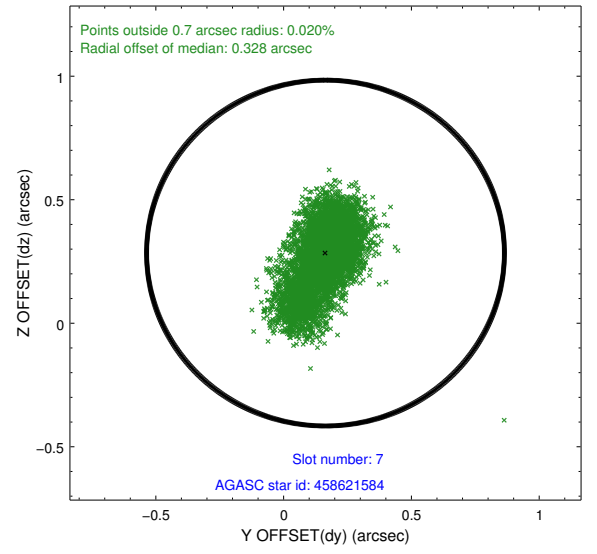
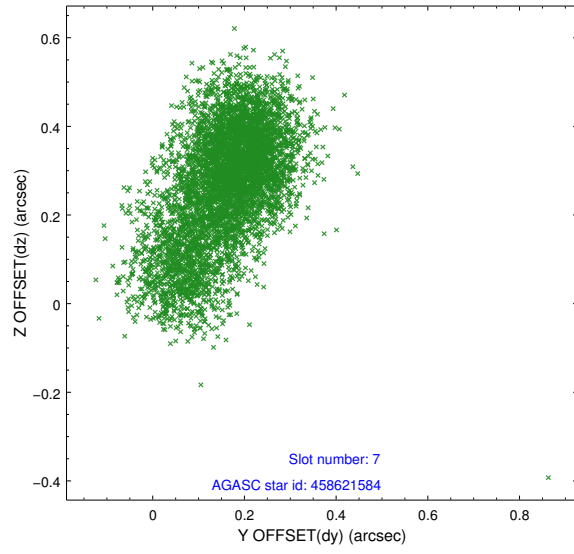
2.4.3 Slot 5



2.4.4 Slot 6

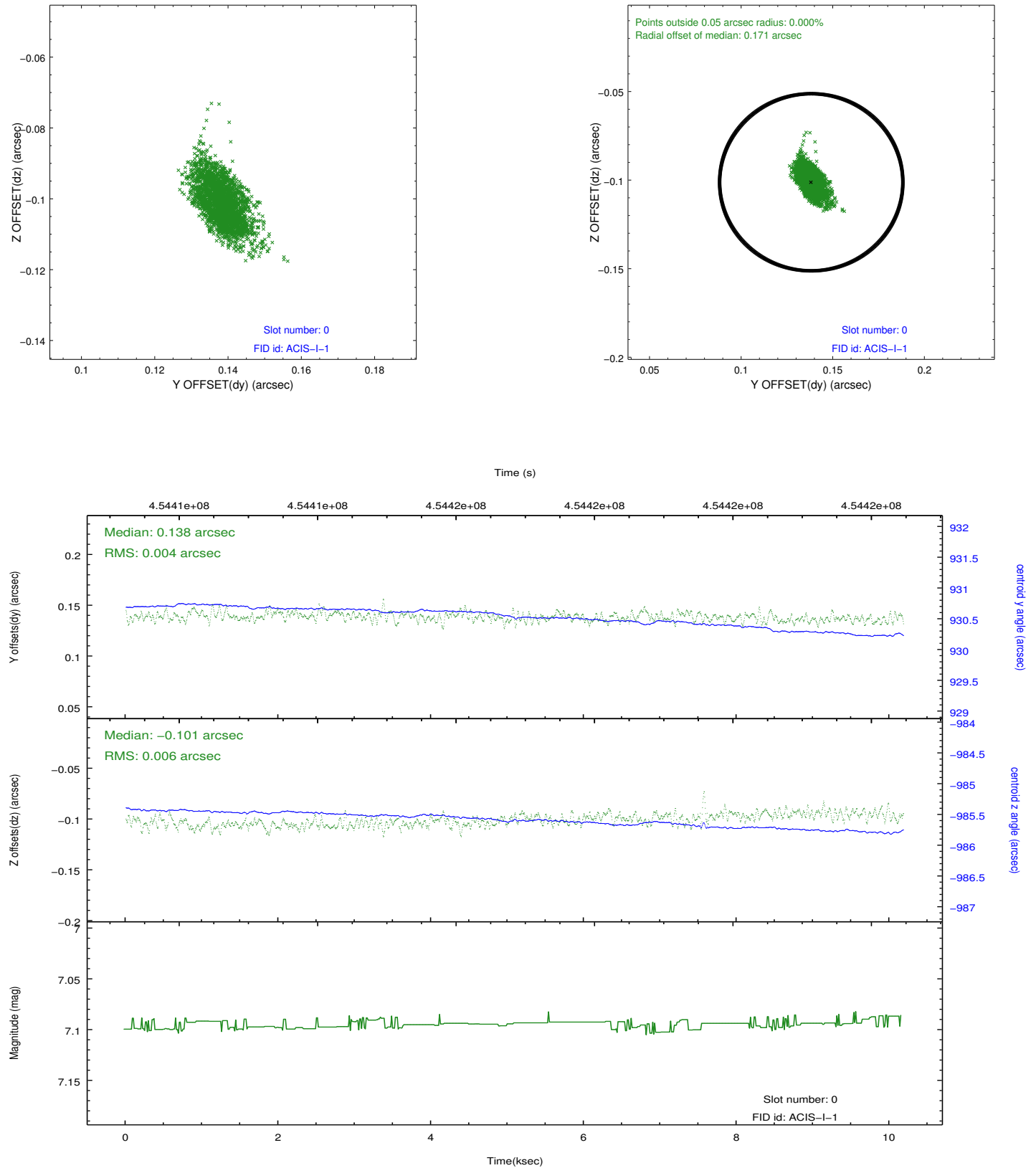


2.4.5 Slot 7

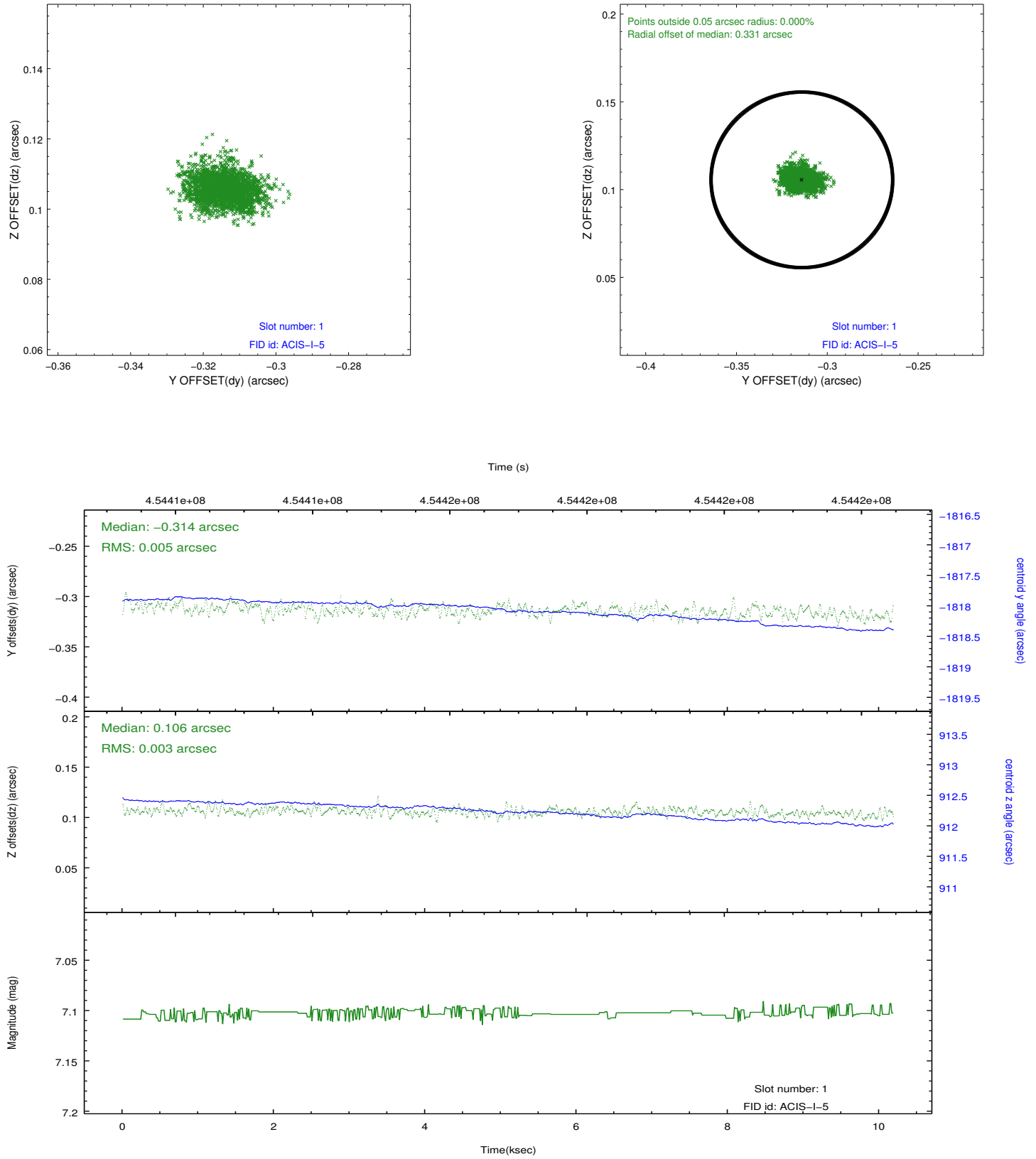


2.5 FID Slots

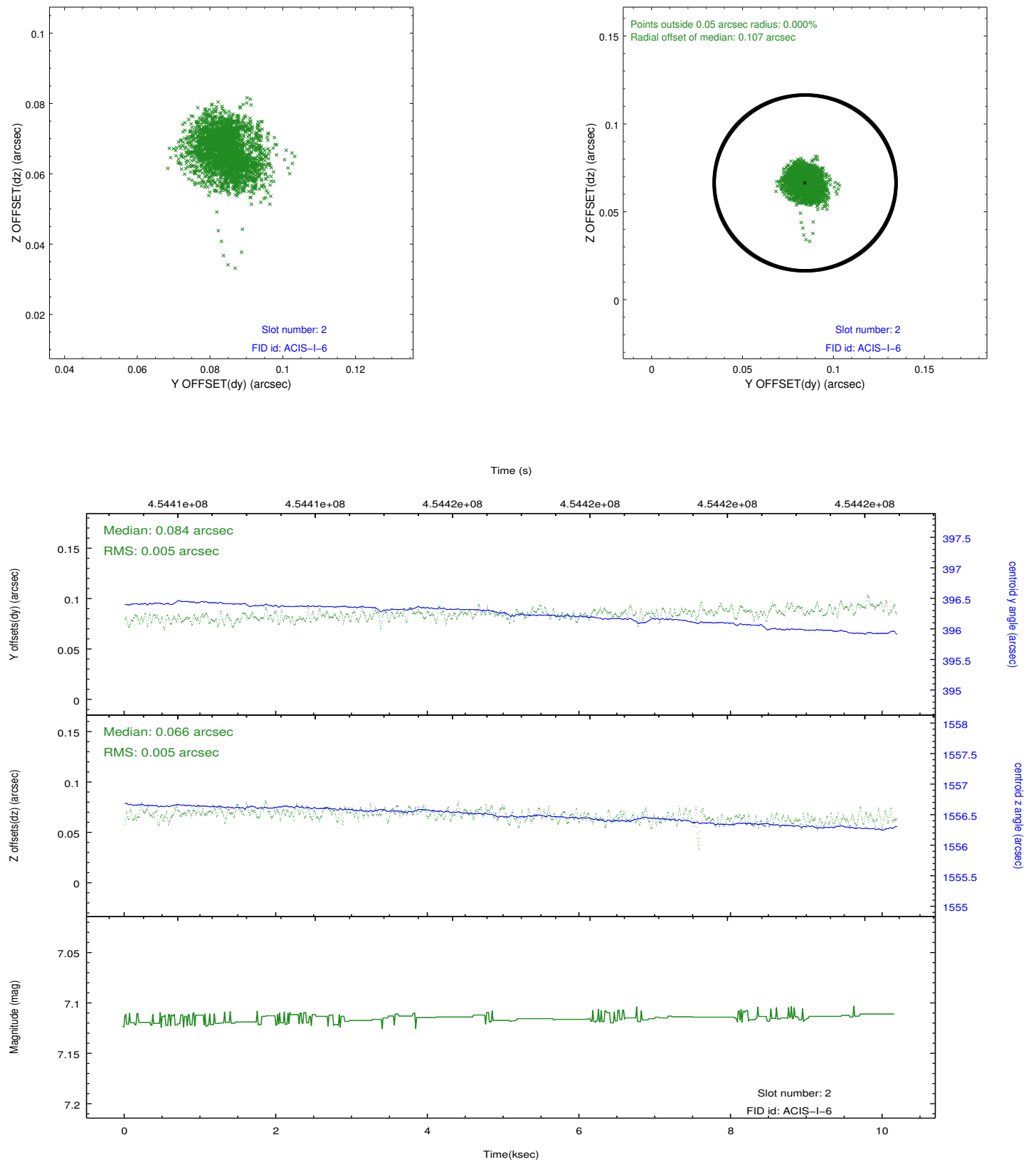
2.5.1 Slot 0



2.5.2 Slot 1



2.5.3 Slot 2



A Summary

A.1 Status

V&V Scientist	Beth Sundheim
V&V Date (YYYY-MM-DD)	2012.05.27
V&V Edition	1
V&V Disposition and Status	OK
V&V Charge Time	10.080808469713

A.2 Comments