

V&V Reference Report

L2 ASCDS Version : 8.4.3

Observation 13405 - L2 Version 2
Chandra X-Ray Center

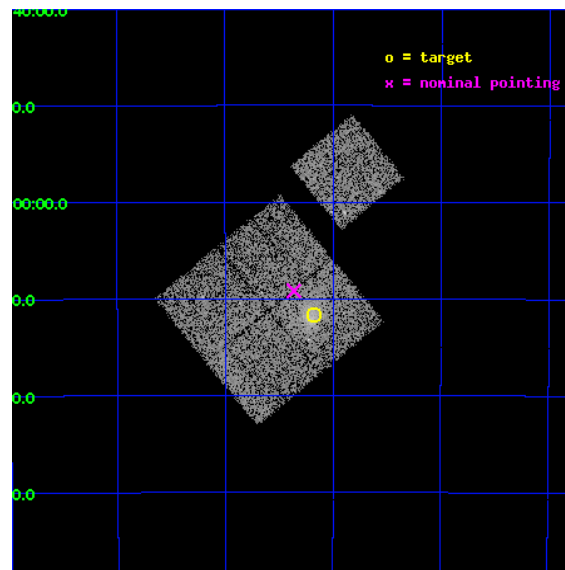
L2 Processing Date : Feb 19 2012

Contents

1	Front	2
2	OBI	3
2.1	OBI	3
2.1.1	Images	3
2.1.2	Bias	3
2.1.3	Parameters	4
2.1.4	Events	4
2.2	Compared Parameters	5
2.3	Aspect	6
2.4	Star Slots	9
2.4.1	Slot 3	9
2.4.2	Slot 4	10
2.4.3	Slot 5	11
2.4.4	Slot 6	12
2.4.5	Slot 7	13
2.5	FID Slots	14
2.5.1	Slot 0	14
2.5.2	Slot 1	15
2.5.3	Slot 2	16
A	Summary	17
A.1	Status	17
A.2	Comments	17

1 Front

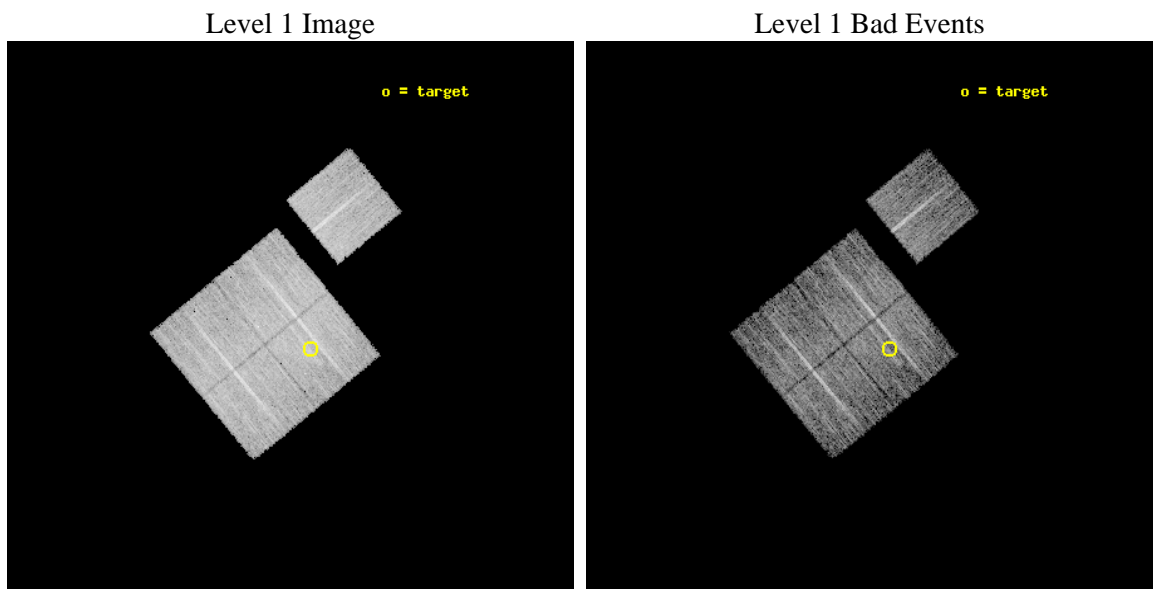
seq_num	801092	Sequence number
obs_id	13405	Observation id
title	Chandra Observation of the Most Massive Galaxy Clusters Detected in the South Pole Telescope Survey	Proposal title
observer	Prof. Gordon Garmire	Principal investigator
object	SPT-CLJ2325-4111	Source name
dtcycle	0	
cycle	P	events from which exps? Prim/Second/Both
ra_targ	351.292917	Observer's specified target RA [deg]
dec_targ	-41.193694	Observer's specified target Dec [deg]
ra_nom	351.34068943099	Nominal RA [deg]
dec_nom	-41.152887005521	Nominal Dec [deg]
roll_nom	50.603350182024	Nominal Roll [deg]
revision	2	Processing version of data
ontime	9057.1041307449	Sum of GTIs [s]
livetime	8938.7663975337	Livetime [s]
ontime0	9056.981010735	Sum of GTIs [s]
ontime1	9057.0220507383	Sum of GTIs [s]
ontime2	9057.0630907416	Sum of GTIs [s]
ontime3	9057.1041307449	Sum of GTIs [s]
ontime6	9056.9399707317	Sum of GTIs [s]
l2events	29669	Number of level 2 events



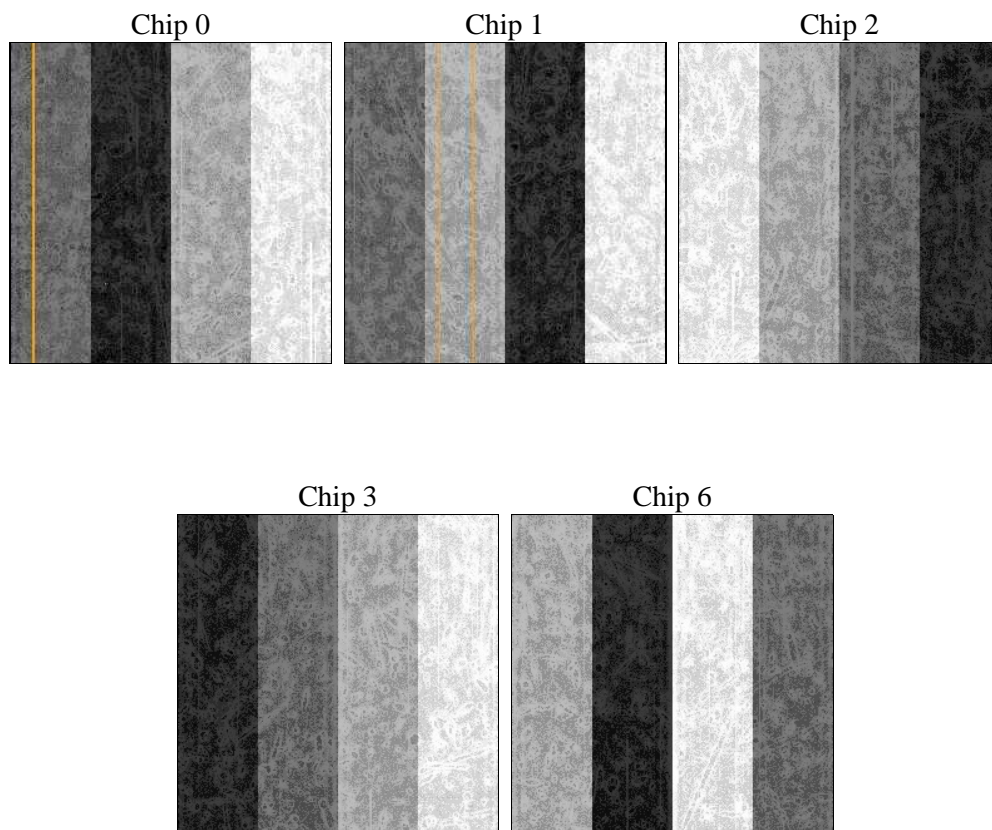
2 OBI

2.1 OBI

2.1.1 Images



2.1.2 Bias



2.1.3 Parameters

obi_num	0	Obi number	sched_exp_time	9000.000000	[s] Scheduled observation exposure time
ascdsver	8.4.3	Processing system revision	ontime	9057.1041307449	Sum of GTIs [s]
caldsver	4.4.8	 	ontime0	9056.981010735	Sum of GTIs [s]
date	2012-02-19T23:39:48	Date and time of file creation	ontime1	9057.0220507383	Sum of GTIs [s]
revision	2	Processing version of data	ontime2	9057.0630907416	Sum of GTIs [s]
			ontime3	9057.1041307449	Sum of GTIs [s]
			ontime6	9056.9399707317	Sum of GTIs [s]
			l1events	275177	Number of level 1 events

2.1.4 Events

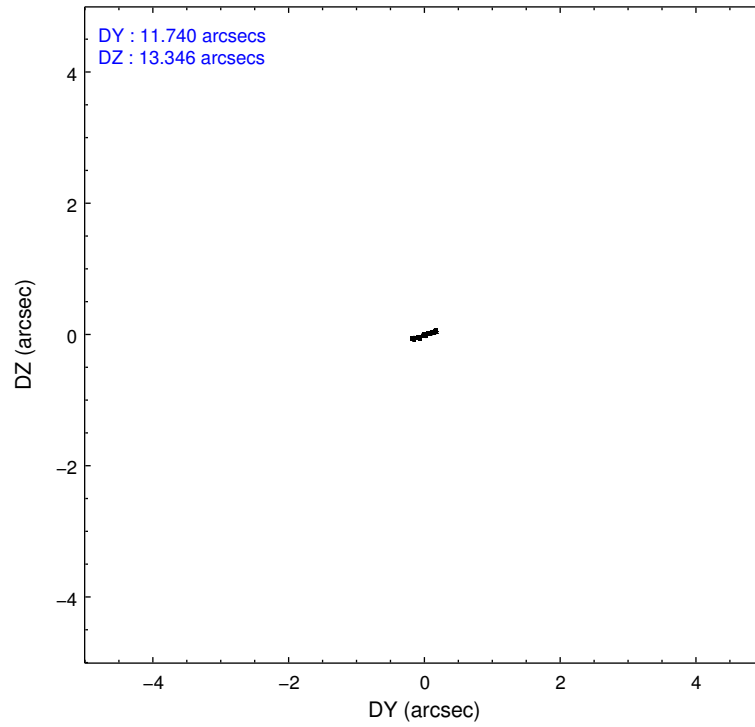
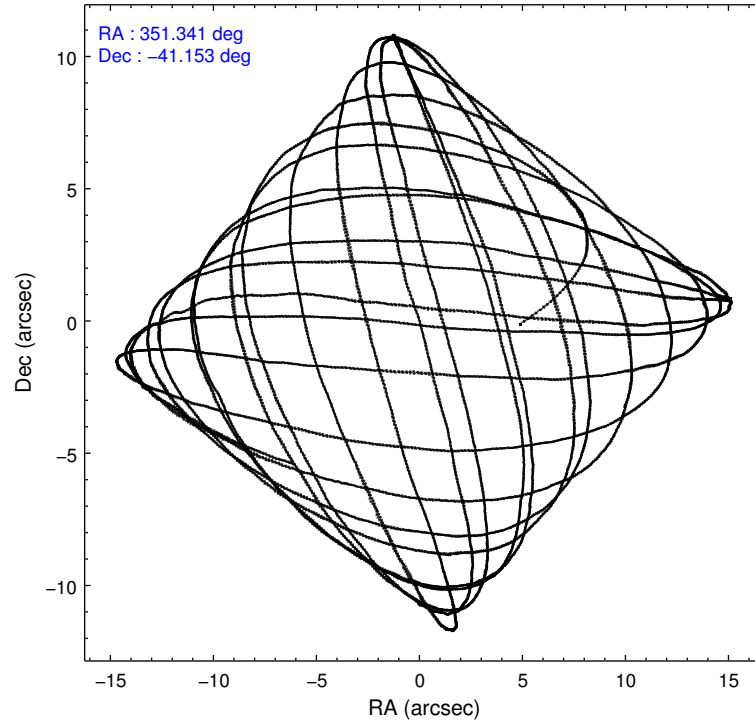
	ccd 0	ccd 1	ccd 2	ccd 3	ccd 6
level 1 events	51352	52850	58144	56817	56014
rejected events	44720	45754	51784	48684	49304
rejected %	87%	86%	89%	85%	88%

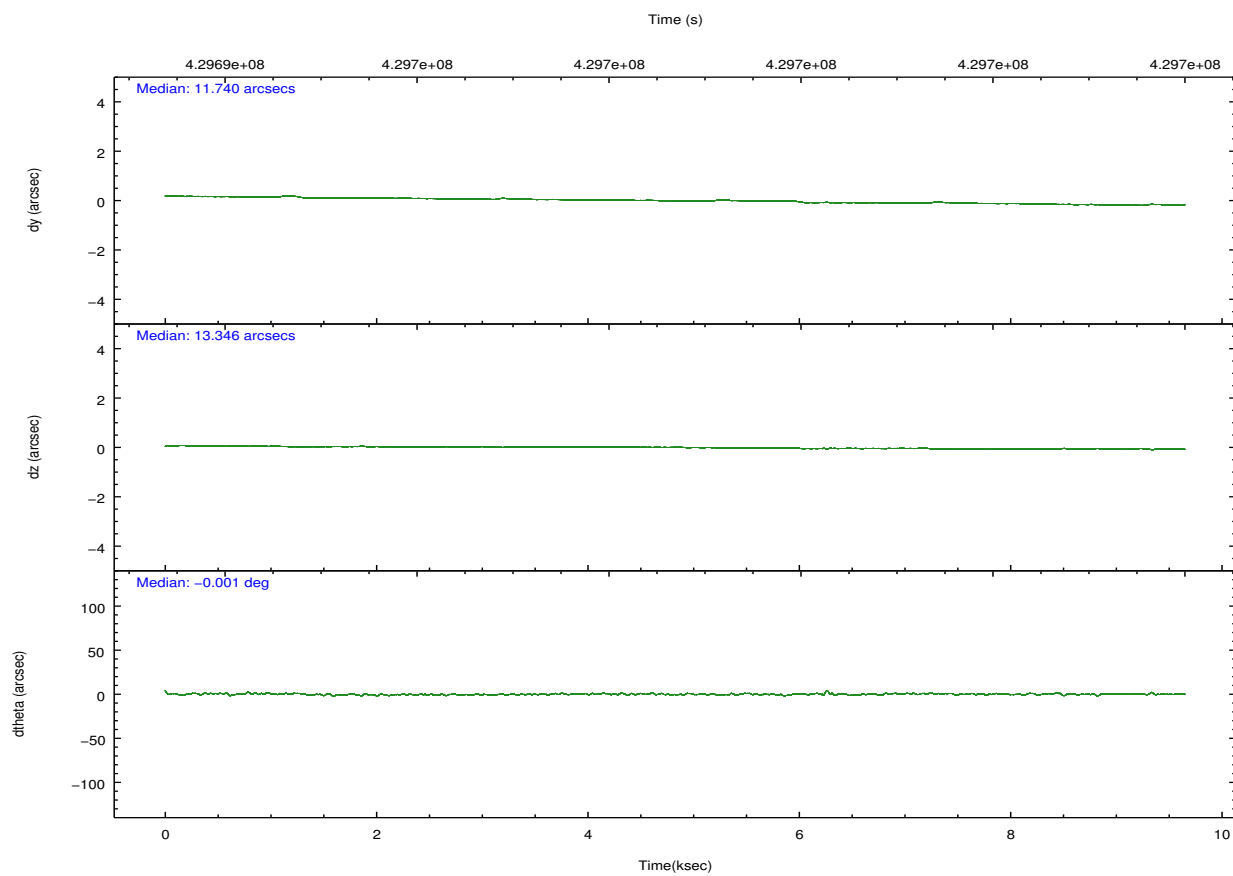
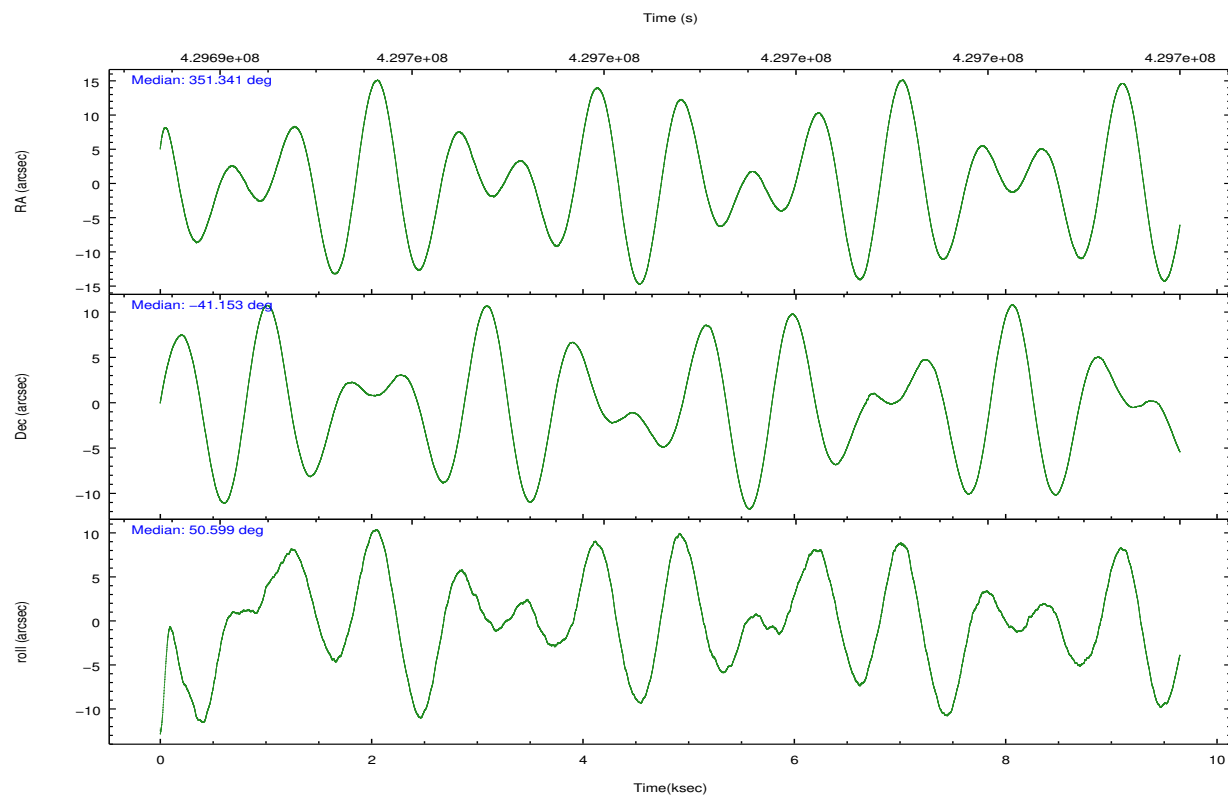
	ccd 0	ccd 1	ccd 2	ccd 3	ccd 6
grade 0 events	2403	2505	2299	3795	2311
	4%	4%	3%	6%	4%
grade 1 events	17	38	36	42	33
	0%	0%	0%	0%	0%
grade 2 events	1582	1681	1588	1509	1507
	3%	3%	2%	2%	2%
grade 3 events	715	726	693	724	713
	1%	1%	1%	1%	1%
grade 4 events	642	706	632	764	655
	1%	1%	1%	1%	1%
grade 5 events	2573	2651	2338	2731	2629
	5%	5%	4%	4%	4%
grade 6 events	1291	1480	1151	1344	1532
	2%	2%	1%	2%	2%
grade 7 events	42129	43063	49407	45908	46634
	82%	81%	84%	80%	83%

2.2 Compared Parameters

Parameter	Planned	Actual	Parameter	Planned	Actual
Instrument	ACIS	ACIS	Obspar format version number	7	7
Detector	ACIS-01236	ACIS-01236	Obspar file type	PREDICTED	ACTUAL
Grating	NONE	NONE	Obspar update status	NONE	UPDATED
Data mode	VFAINT	VFAINT	CCD I0 on	Y	Y
Observation mode	POINTING	POINTING	CCD I1 on	Y	Y
[deg] Pointing RA	351.334940	351.3406894309871	CCD I2 on	Y	Y
[deg] Pointing Dec	-41.180065	-41.15288700552106	CCD I3 on	Y	Y
[deg] Pointing Roll	50.390889	50.60335018202429	CCD S0 on	N	N
[mm] SIM focus pos	-0.782348	-0.7809083437167272	CCD S1 on	N	N
[mm] SIM defocus	0	0.001439871863259334	CCD S2 on	O1	Y
[mm] SIM translation stage pos	-225.840463	-225.8433433320239	CCD S3 on	N	N
[mm] SIM translation stage offset	-7.752	-7.749109670905796	CCD S4 on	N	N
[s] Observation start time (MET)	429694505.184000	429693341.58635	CCD S5 on	N	N
Observation start date	2011-08-14T07:33:59	2011-08-14T07:15:41	Number of optional ACIS chips dropped	0	0
[s] Observation end time (MET)	429703505.184000	429704342.91193	On-chip summing requested	N	N
Observation end date	2011-08-14T10:03:59	2011-08-14T10:19:02	Subarray requested	NONE	NONE
Read mode	TIMED	TIMED	Alternating exposures requested	N	N
			[s] Primary exposure time	0.000000	3.1

2.3 Aspect



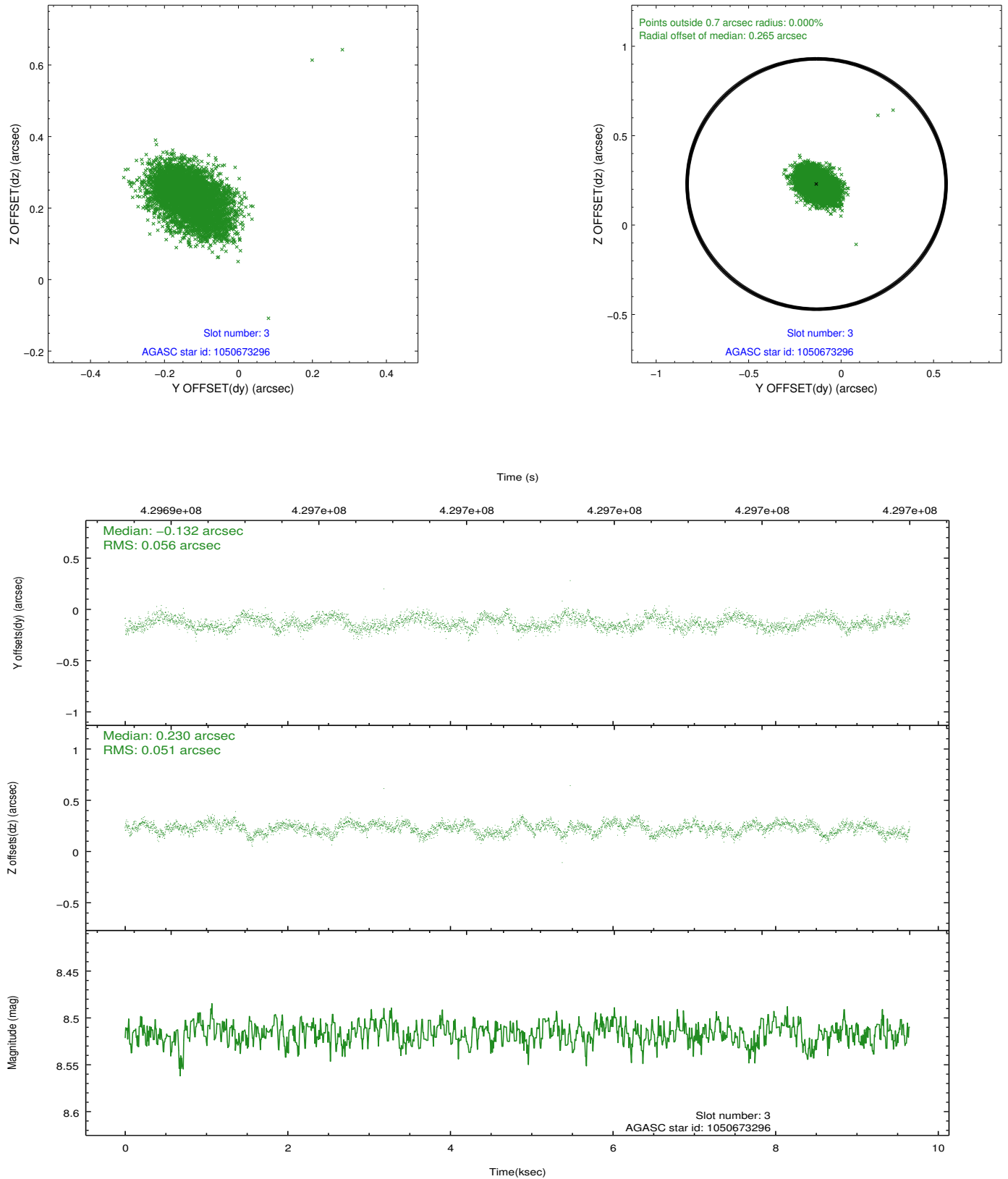


Slot Statistics

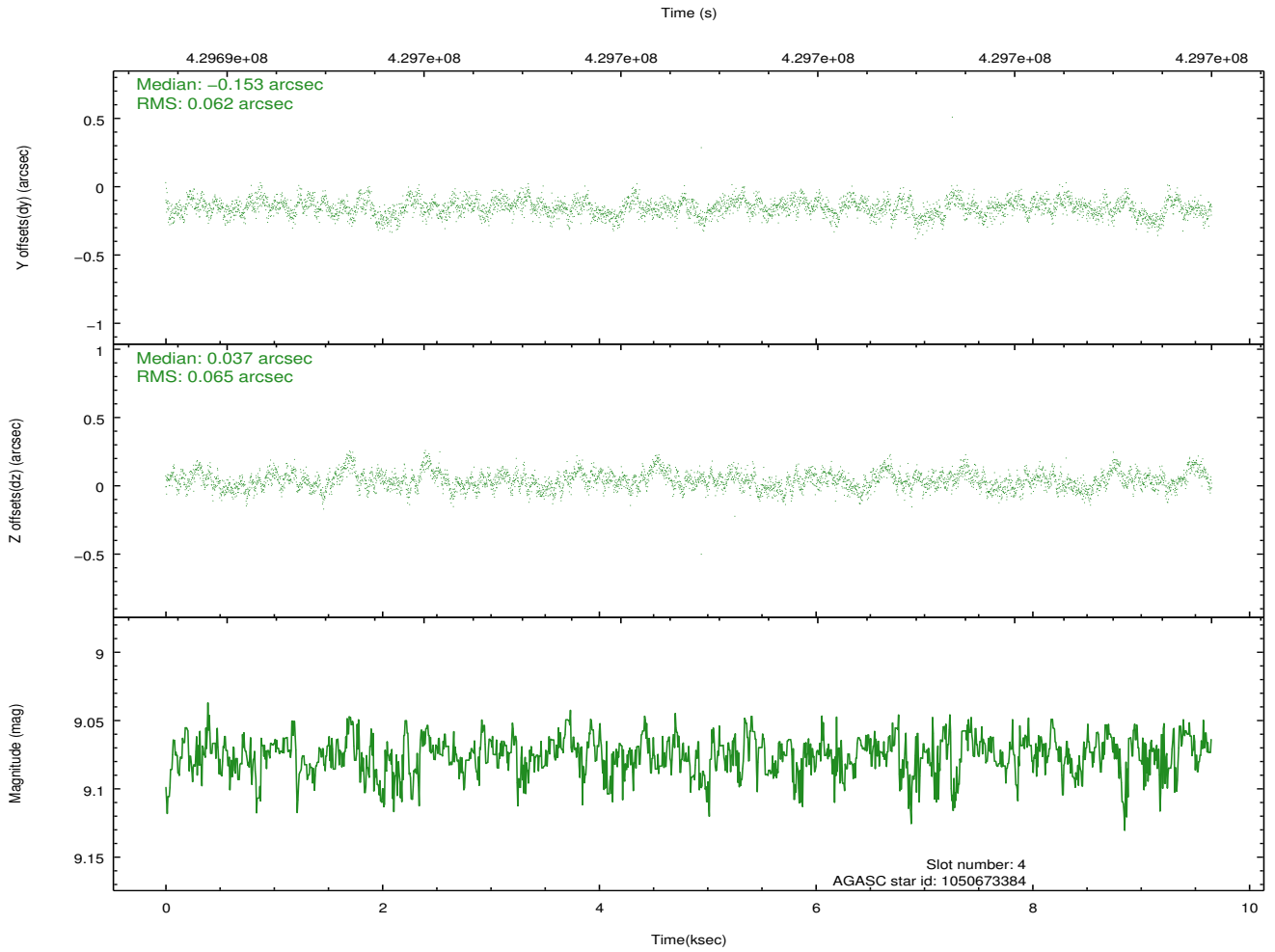
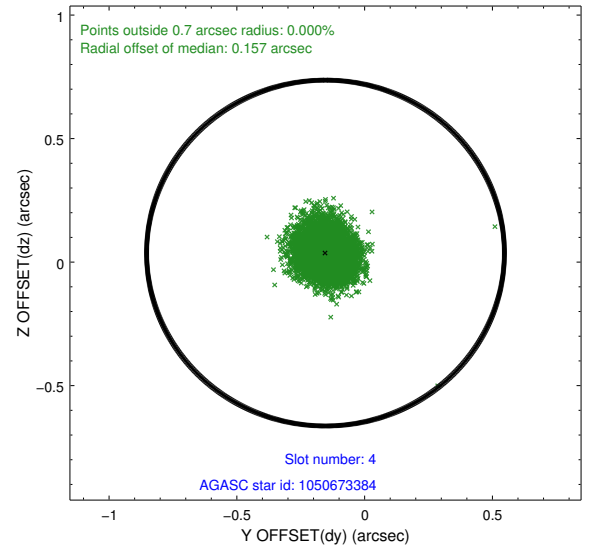
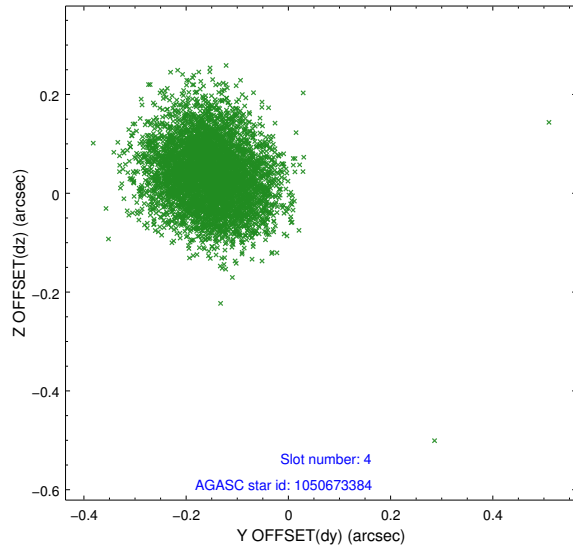
slot	status	id	mag	n_pts	med_dy	med_dz	dr1	dr2	ra	dec	mean_y	mean_z
0	FID	ACIS-I-1	7.10	2354	0.145	-0.004	0.007	0.013	0.000000	0.000000	927.80	-995.99
1	FID	ACIS-I-2	7.04	2354	-0.226	-0.038	0.008	0.014	0.000000	0.000000	-766.76	-1001.75
2	FID	ACIS-I-6	7.11	2354	-0.010	0.109	0.008	0.015	0.000000	0.000000	393.07	1545.60
3	GUIDE	1050673296	8.52	4708	-0.132	0.230	0.081	0.128	350.654008	-41.441392	-1902.01	811.05
4	GUIDE	1050673384	9.07	4705	-0.153	0.037	0.096	0.151	351.188402	-40.419106	1852.44	2053.51
5	GUIDE	1050674976	9.81	4706	-0.274	0.005	0.131	0.216	351.410369	-40.394707	2310.09	1643.65
6	GUIDE	1050676544	8.58	4708	0.558	-0.613	0.082	0.129	350.420349	-41.143468	-1488.36	1985.38
7	GUIDE	1050681192	9.44	4693	0.003	0.349	0.160	0.257	351.567647	-41.694409	-1028.50	-1662.45

2.4 Star Slots

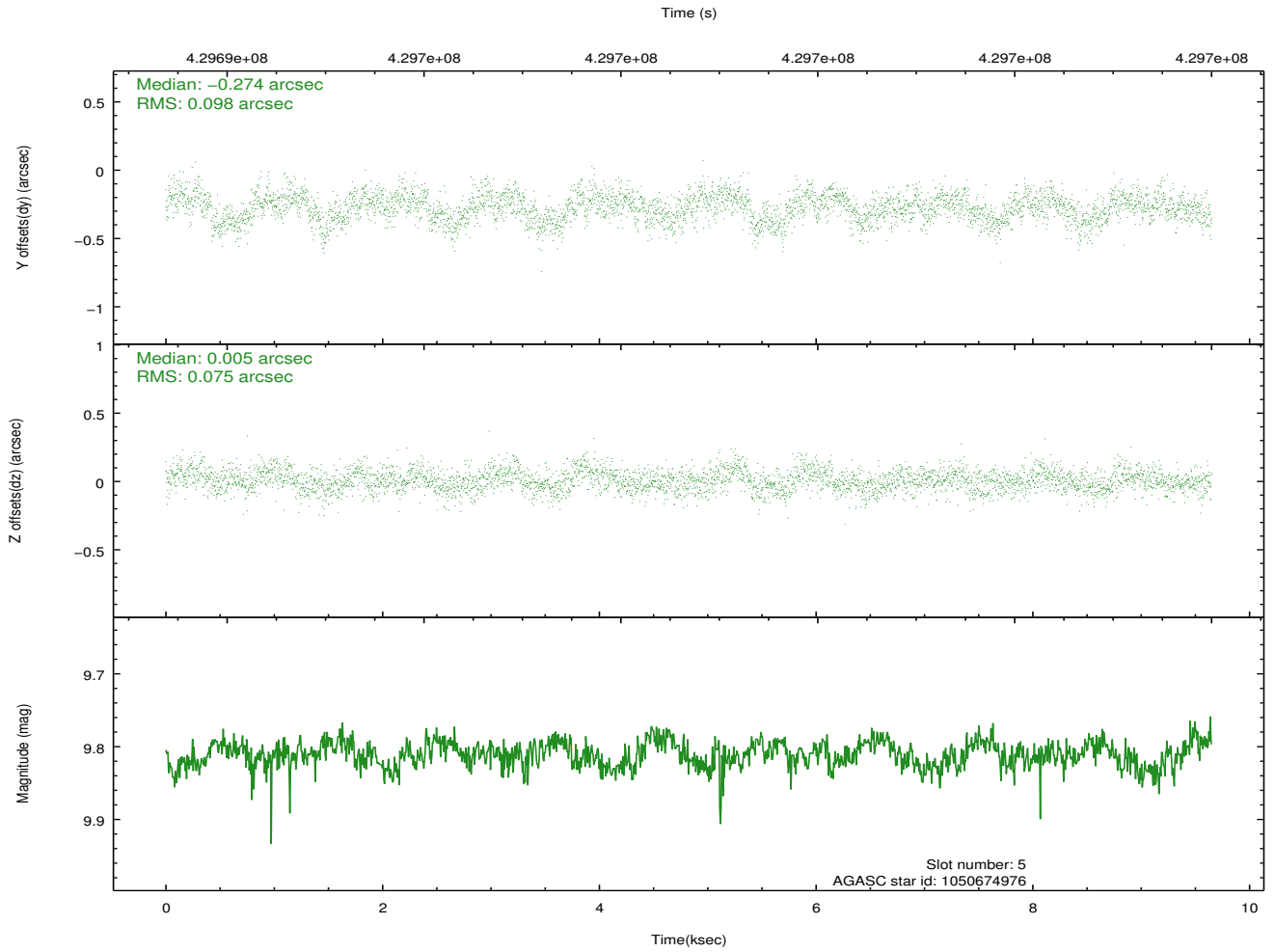
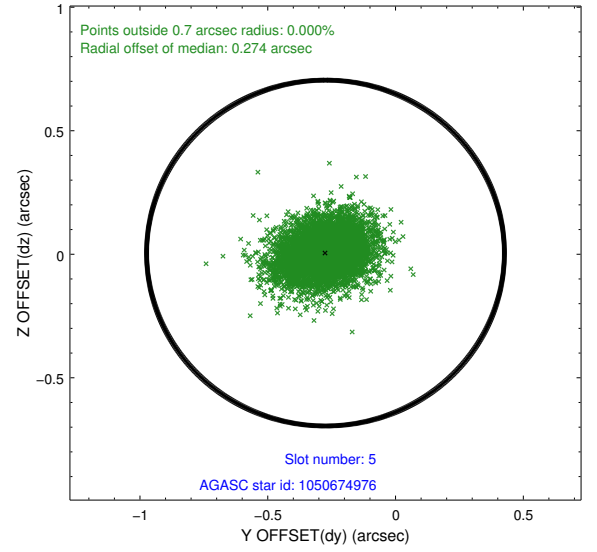
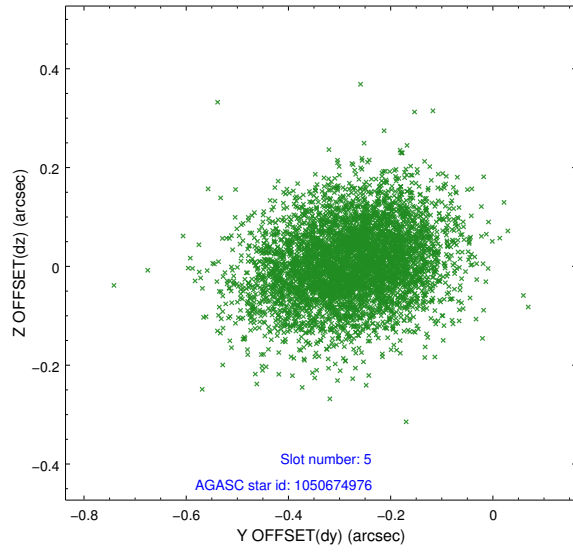
2.4.1 Slot 3



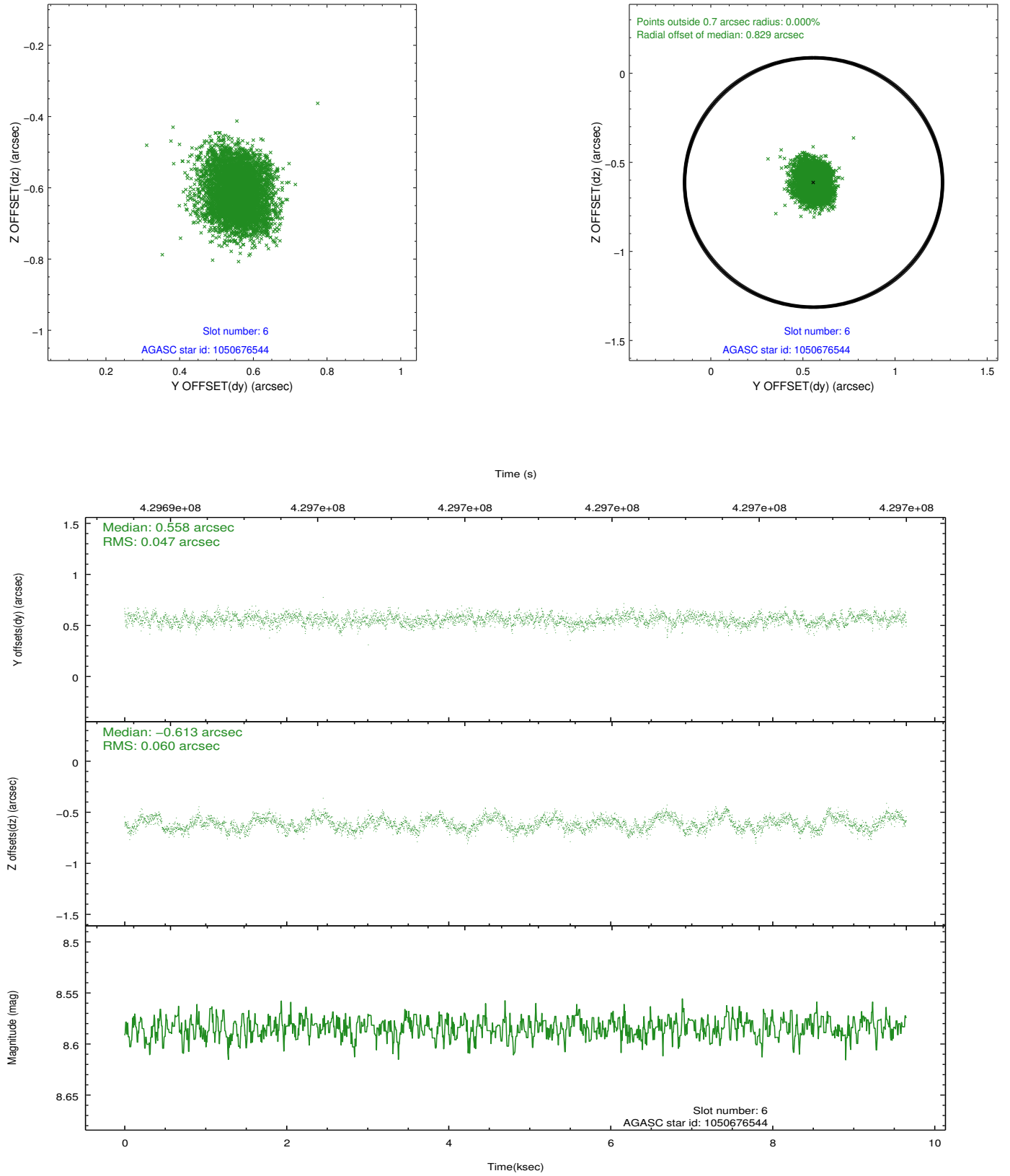
2.4.2 Slot 4



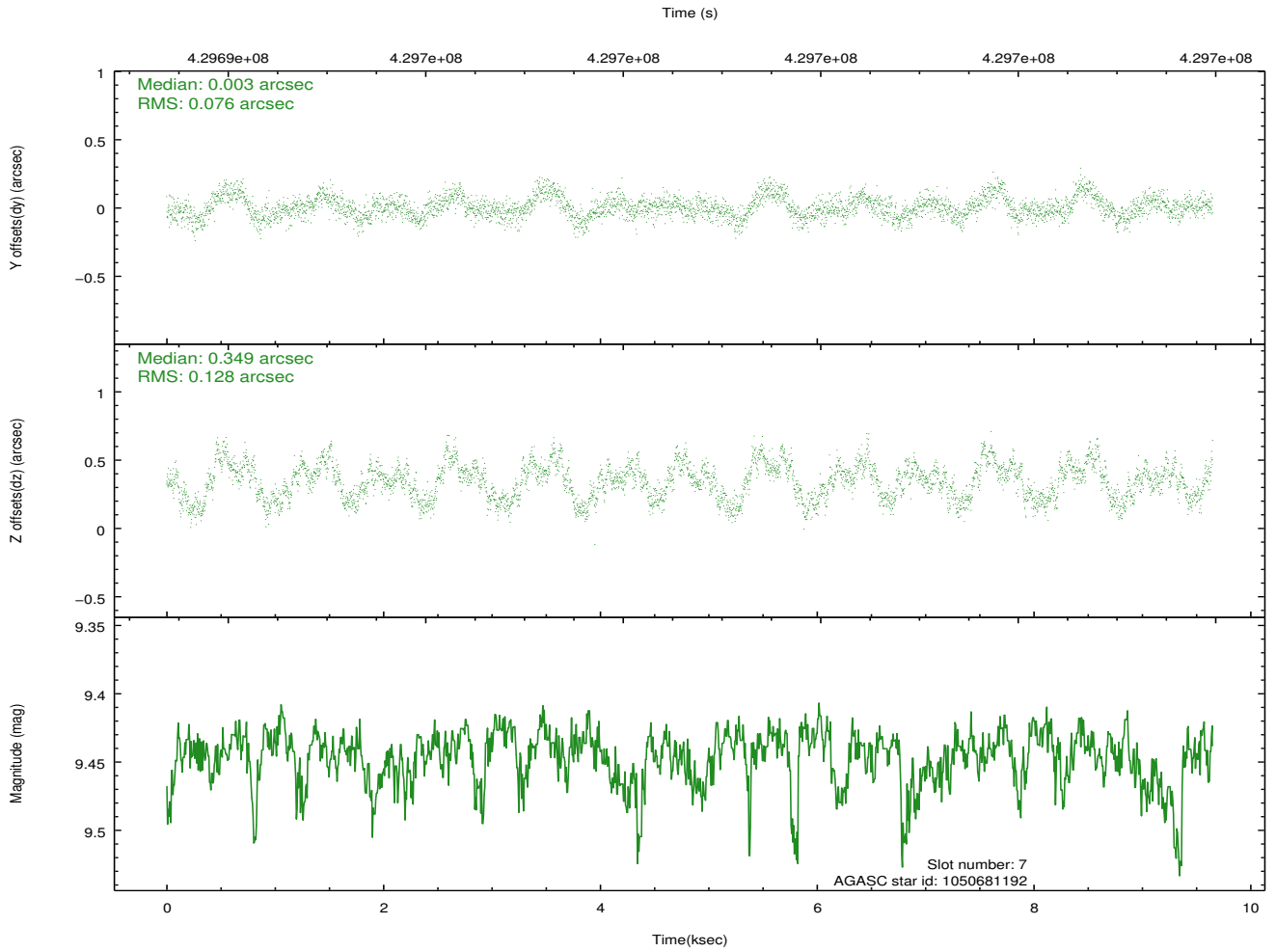
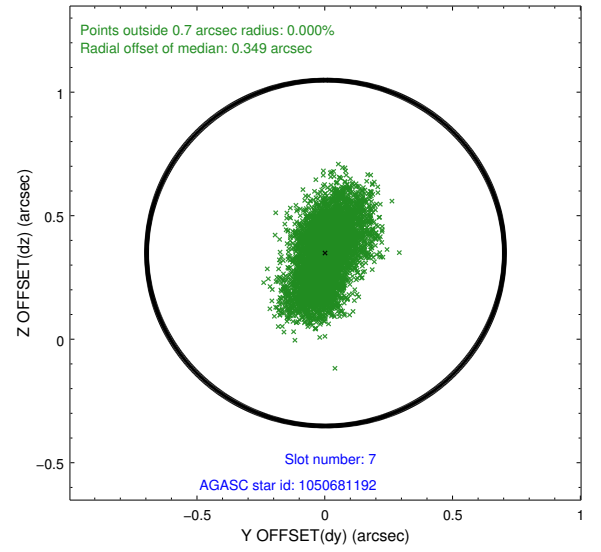
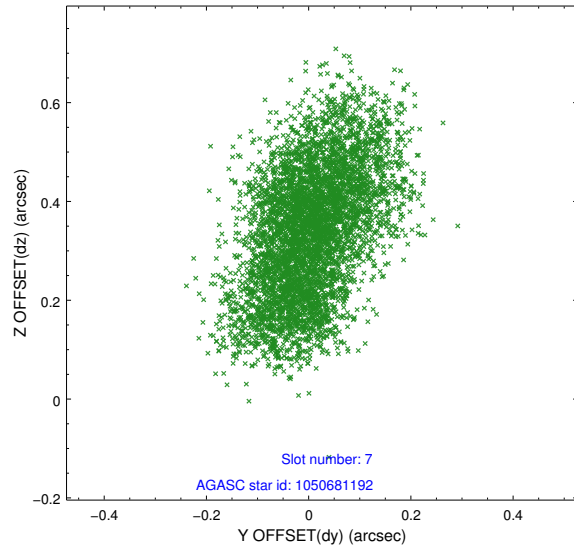
2.4.3 Slot 5



2.4.4 Slot 6

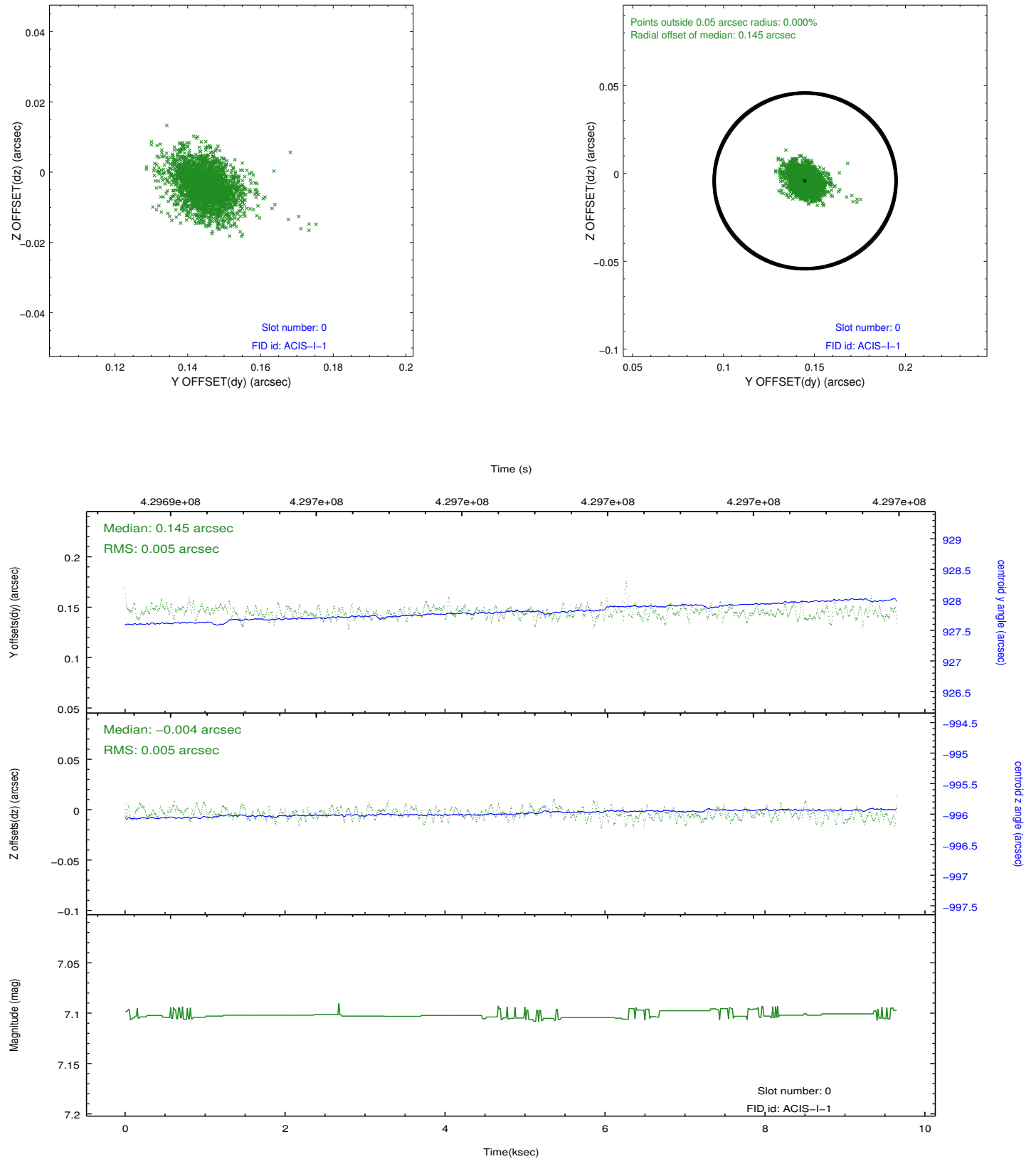


2.4.5 Slot 7

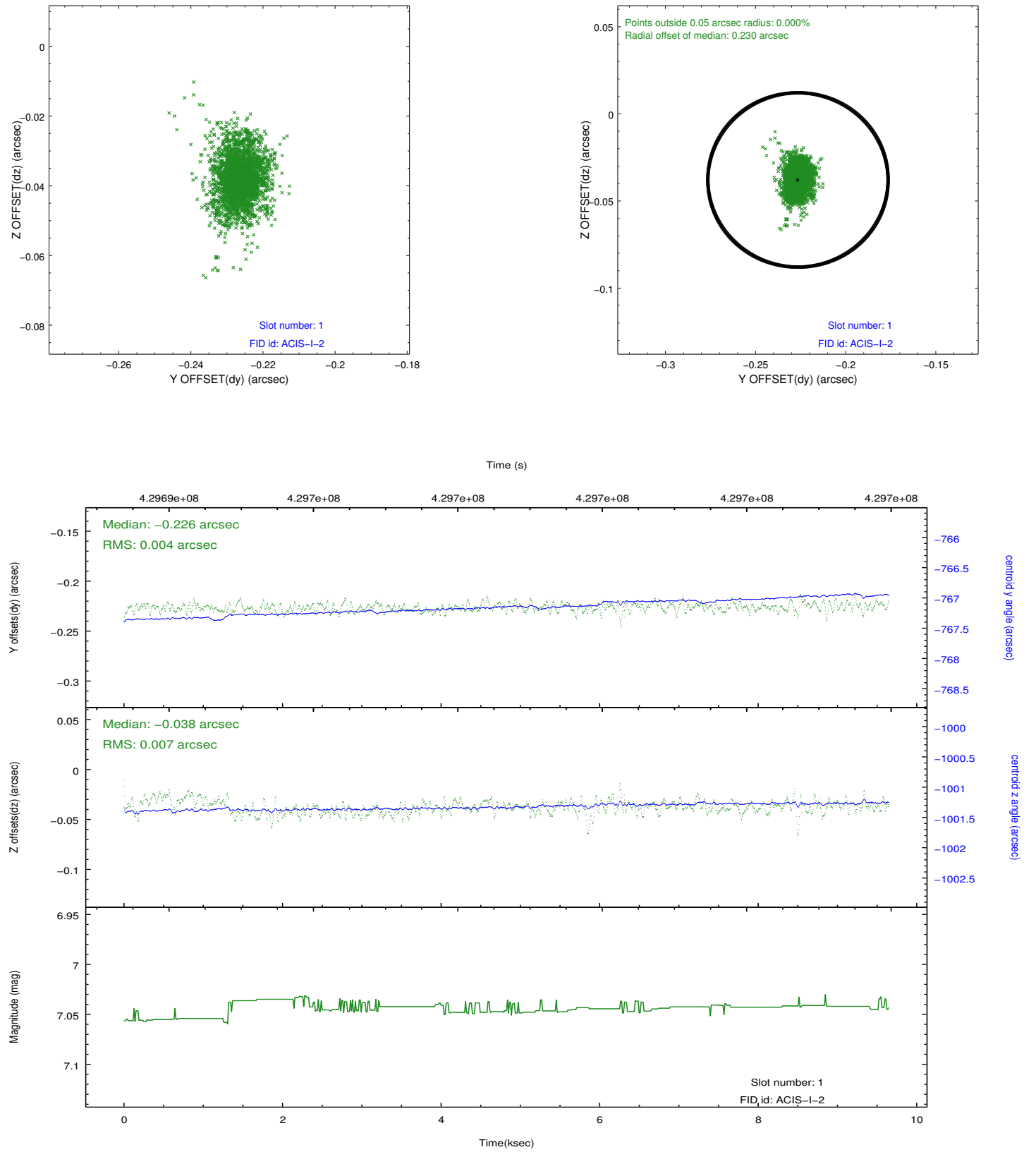


2.5 FID Slots

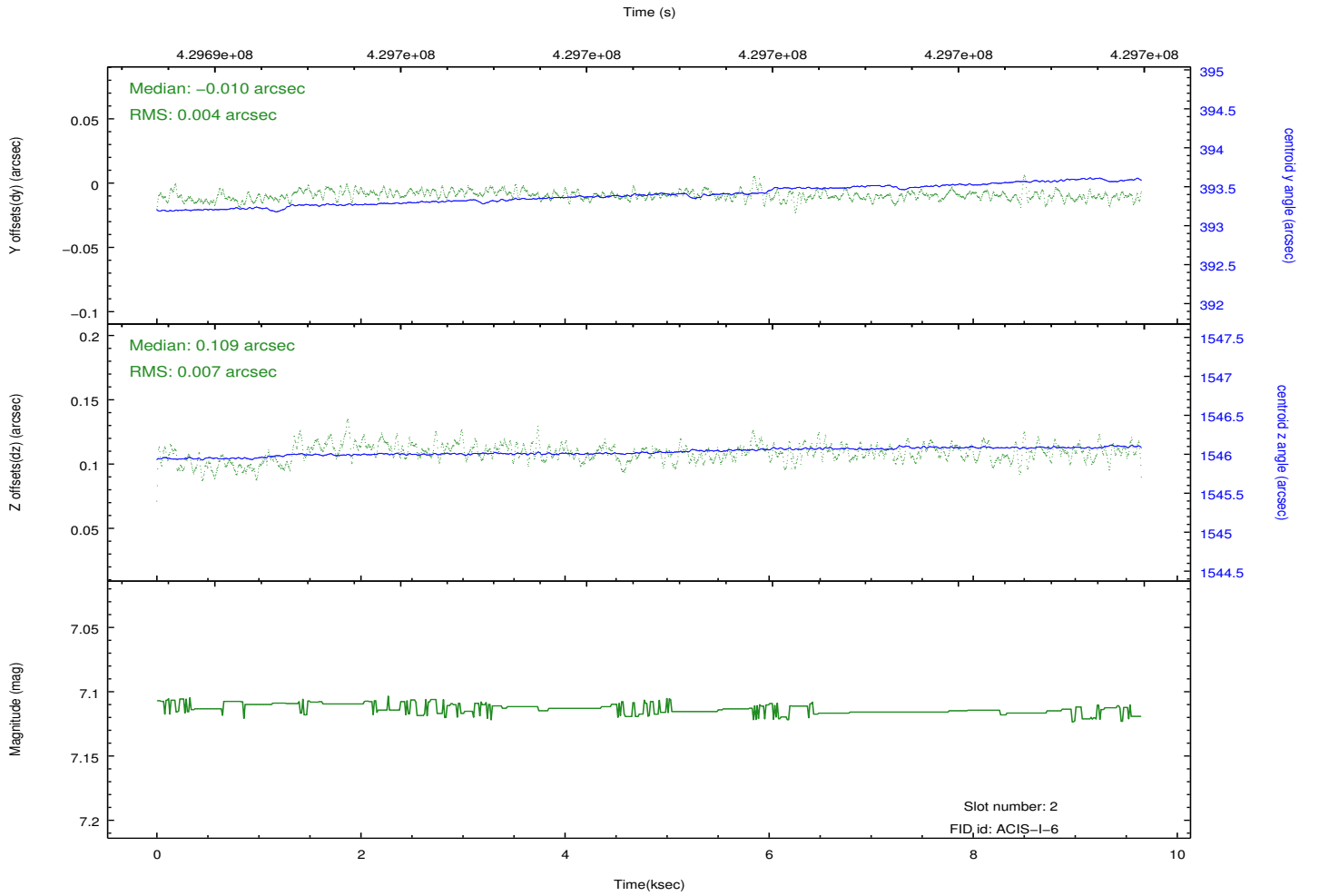
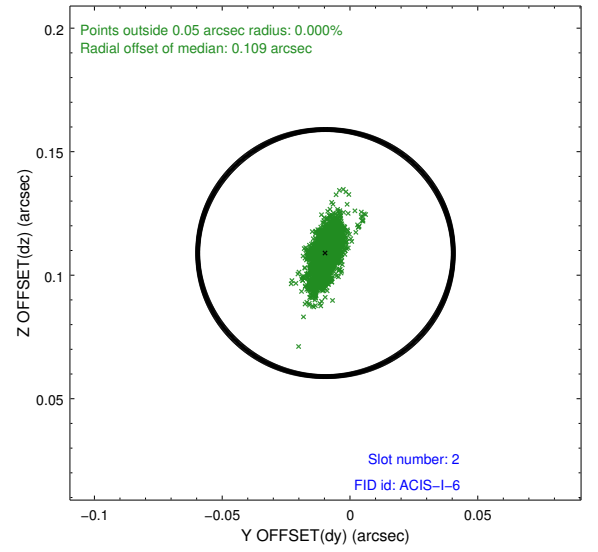
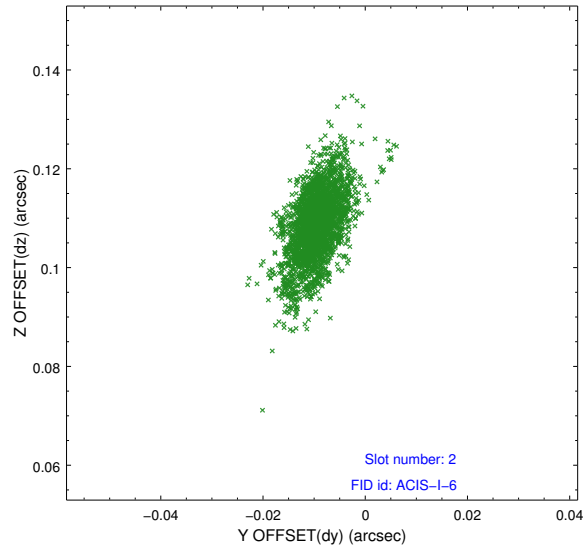
2.5.1 Slot 0



2.5.2 Slot 1



2.5.3 Slot 2



A Summary

A.1 Status

V&V Scientist	Jen Lauer
V&V Date (YYYY-MM-DD)	2012.02.21
V&V Edition	1
V&V Disposition and Status	OK
V&V Charge Time	9.057104131341

A.2 Comments