

V&V Reference Report

L2 ASCDS Version : 8.4.3

Observation 13381 - L2 Version 2
Chandra X-Ray Center

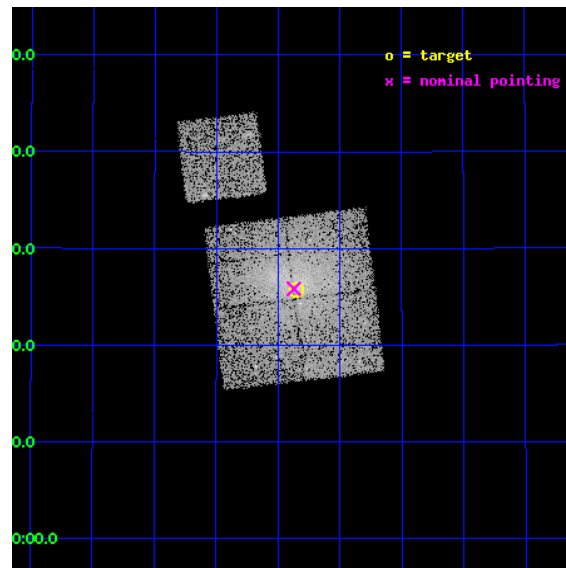
L2 Processing Date : Feb 29 2012

Contents

1	Front	2
2	OBI	3
2.1	OBI	3
2.1.1	Images	3
2.1.2	Bias	3
2.1.3	Parameters	4
2.1.4	Events	4
2.2	Compared Parameters	5
2.3	Aspect	6
2.4	Star Slots	9
2.4.1	Slot 3	9
2.4.2	Slot 4	10
2.4.3	Slot 5	11
2.4.4	Slot 6	12
2.4.5	Slot 7	13
2.5	FID Slots	14
2.5.1	Slot 0	14
2.5.2	Slot 1	15
2.5.3	Slot 2	16
A	Summary	17
A.1	Status	17
A.2	Comments	17

1 Front

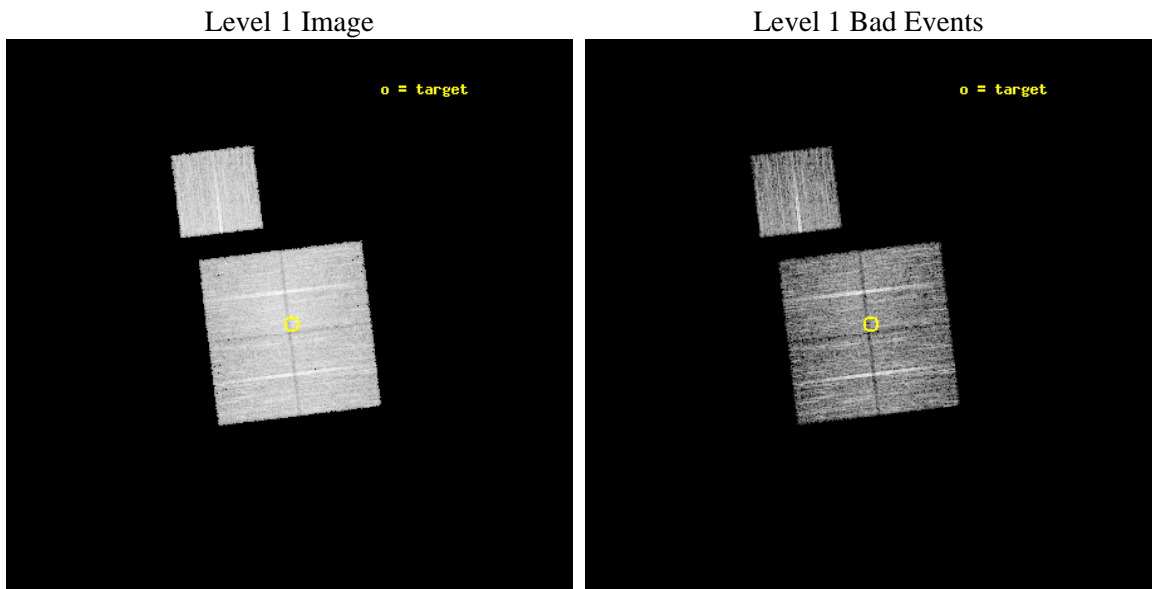
seq_num	801068	Sequence number
obs_id	13381	Observation id
title	Characterizing the Most Massive Clusters in the Local Universe	Pro
observer	Dr Stephen Murray	Principal investigator
object	G058.28+18.59	Source name
dtcycle	0	
cycle	P	events from which exps? Prim/Second/Both
ra_targ	276.3377	Observer's specified target RA [deg]
dec_targ	30.4288	Observer's specified target Dec [deg]
ra_nom	276.34307330583	Nominal RA [deg]
dec_nom	30.430679202833	Nominal Dec [deg]
roll_nom	353.13842048135	Nominal Roll [deg]
revision	2	Processing version of data
ontime	9055.1000696421	Sum of GTIs [s]
livetime	8936.7885209645	Livetime [s]
ontime0	9055.1000696421	Sum of GTIs [s]
ontime1	9055.1000696421	Sum of GTIs [s]
ontime2	9055.1000696421	Sum of GTIs [s]
ontime3	9055.1000696421	Sum of GTIs [s]
ontime6	9055.1000696421	Sum of GTIs [s]
l2events	44758	Number of level 2 events



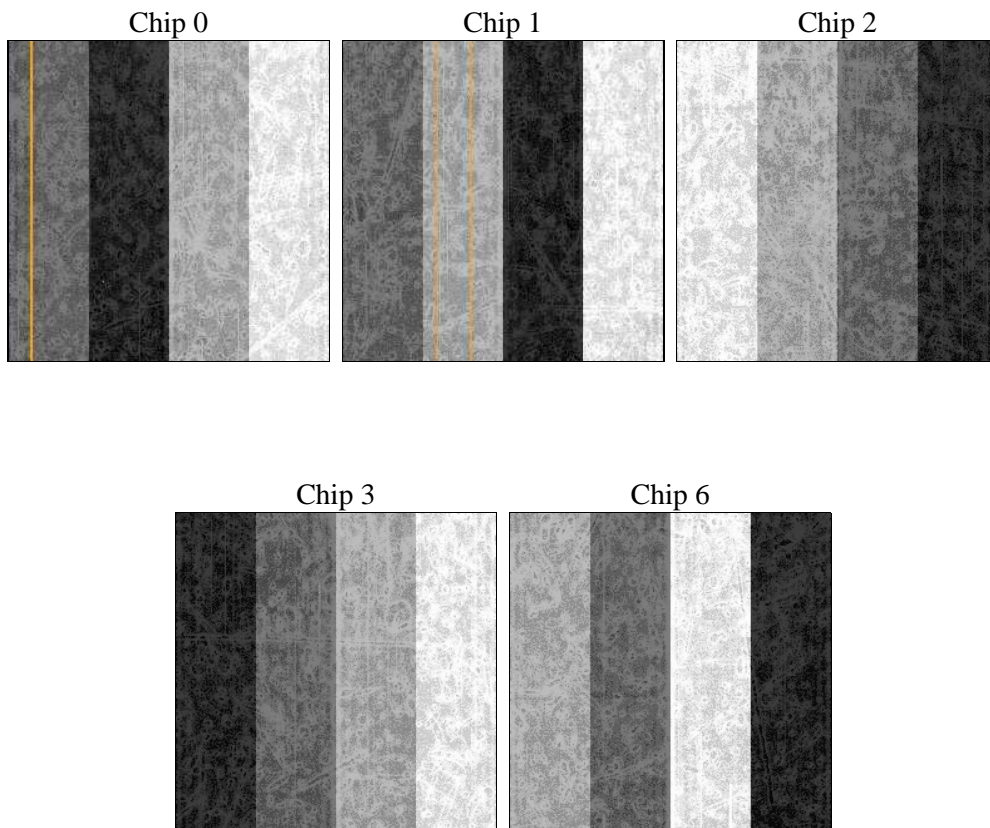
2 OBI

2.1 OBI

2.1.1 Images



2.1.2 Bias



2.1.3 Parameters

obi_num	0	Obi number	sched_exp_time	9000.896000	[s] Scheduled observation exposure time
ascdsver	8.4.3	Processing system revision	ontime	9055.1000696421	Sum of GTIs [s]
caldsver	4.4.8	 	ontime0	9055.1000696421	Sum of GTIs [s]
date	2012-02-29T12:14:29	Date and time of file creation	ontime1	9055.1000696421	Sum of GTIs [s]
revision	2	Processing version of data	ontime2	9055.1000696421	Sum of GTIs [s]
			ontime3	9055.1000696421	Sum of GTIs [s]
			ontime6	9055.1000696421	Sum of GTIs [s]
			l1events	297627	Number of level 1 events

2.1.4 Events

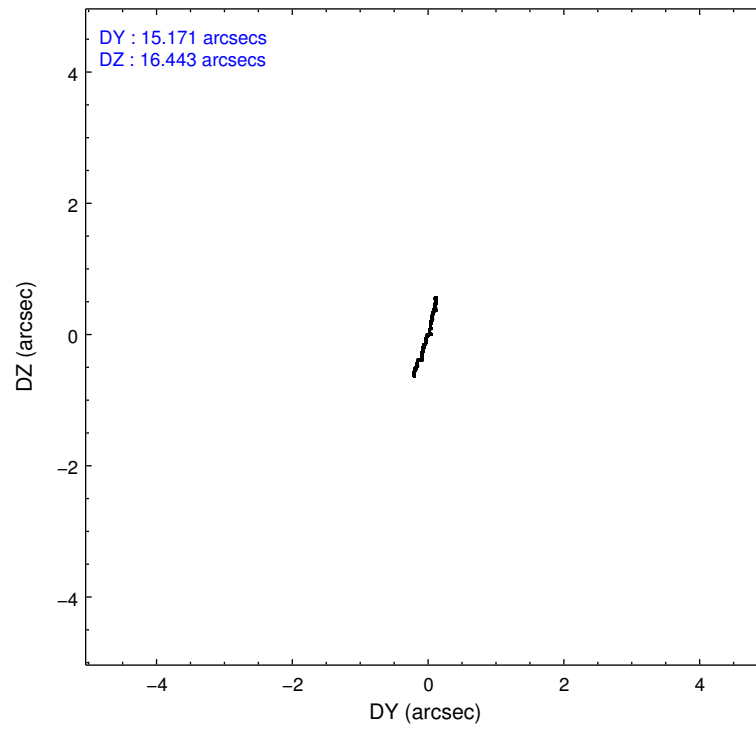
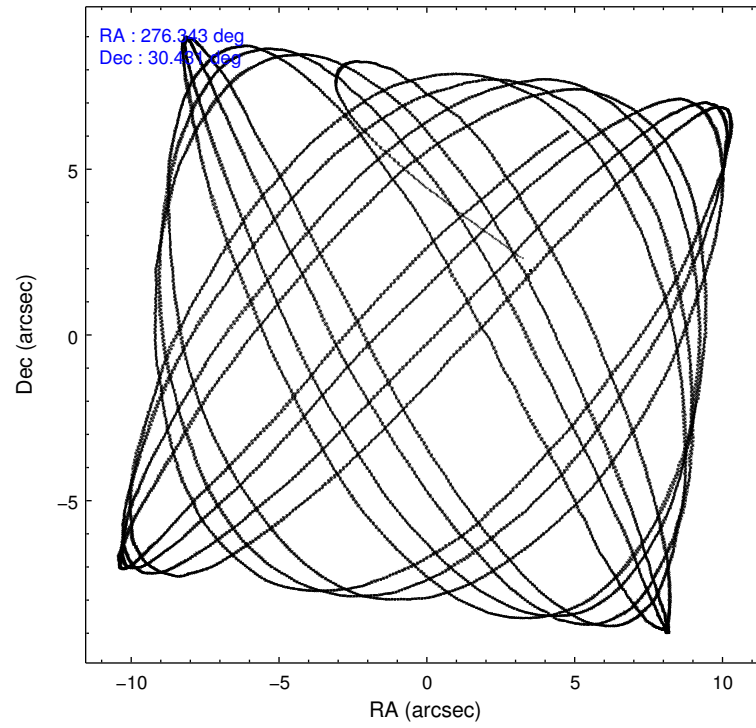
	ccd 0	ccd 1	ccd 2	ccd 3	ccd 6
level 1 events	55286	58486	61849	61583	60423
rejected events	46700	48152	49443	49137	53429
rejected %	84%	82%	79%	79%	88%

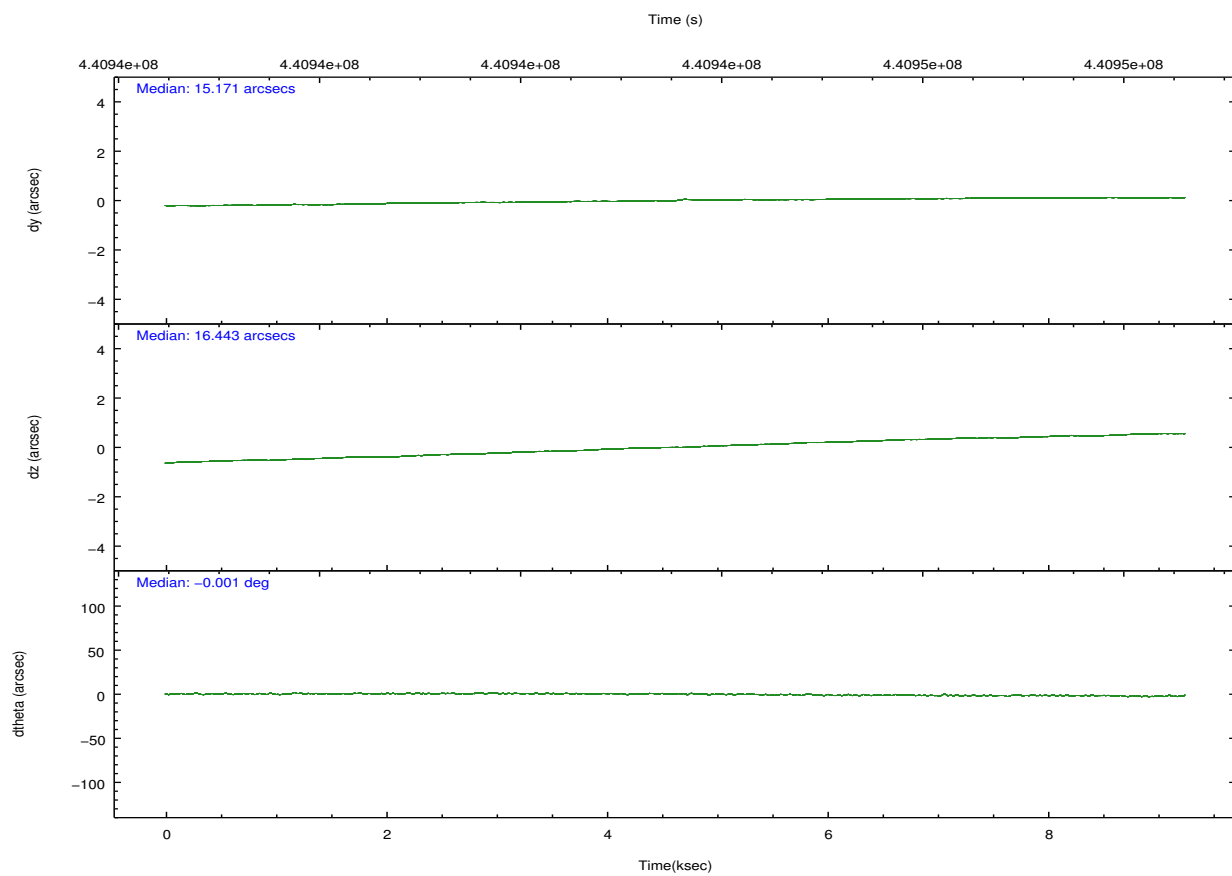
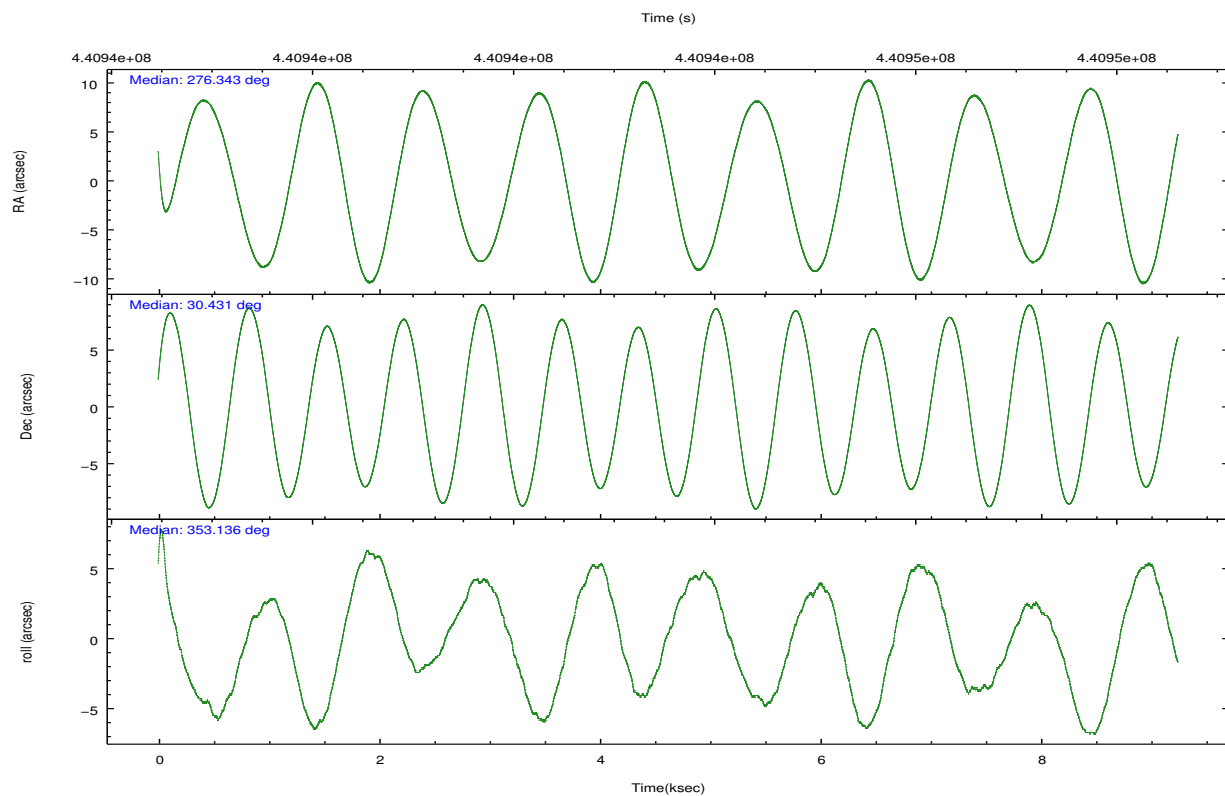
	ccd 0	ccd 1	ccd 2	ccd 3	ccd 6
grade 0 events	4064	5014	7190	7235	2501
	7%	8%	11%	11%	4%
grade 1 events	35	50	79	71	27
	0%	0%	0%	0%	0%
grade 2 events	1770	2043	2156	2083	1589
	3%	3%	3%	3%	2%
grade 3 events	732	820	832	837	719
	1%	1%	1%	1%	1%
grade 4 events	670	806	850	854	720
	1%	1%	1%	1%	1%
grade 5 events	2420	2691	2348	2790	2689
	4%	4%	3%	4%	4%
grade 6 events	1359	1654	1385	1447	1468
	2%	2%	2%	2%	2%
grade 7 events	44236	45408	47009	46266	50710
	80%	77%	76%	75%	83%

2.2 Compared Parameters

Parameter	Planned	Actual	Parameter	Planned	Actual
Instrument	ACIS	ACIS	Obspar format version number	7	7
Detector	ACIS-01236	ACIS-01236	Obspar file type	PREDICTED	ACTUAL
Grating	NONE	NONE	Obspar update status	NONE	UPDATED
Data mode	VFAINT	VFAINT	CCD I0 on	Y	Y
Observation mode	POINTING	POINTING	CCD I1 on	Y	Y
[deg] Pointing RA	276.313813	276.3430733058339	CCD I2 on	Y	Y
[deg] Pointing Dec	30.419768	30.43067920283318	CCD I3 on	Y	Y
[deg] Pointing Roll	352.944549	353.1384204813493	CCD S0 on	N	N
[mm] SIM focus pos	-0.782348	-0.7809083437167272	CCD S1 on	N	N
[mm] SIM defocus	0	0.001439871863259334	CCD S2 on	O1	Y
[mm] SIM translation stage pos	-232.592463	-232.5817083402047	CCD S3 on	N	N
[mm] SIM translation stage offset	-1	-1.010744662724989	CCD S4 on	N	N
[s] Observation start time (MET)	440939147.184000	440938185.95224	CCD S5 on	N	N
Observation start date	2011-12-22T11:04:41	2011-12-22T10:49:45	Number of optional ACIS chips dropped	0	0
[s] Observation end time (MET)	440948148.184000	440948384.19028	On-chip summing requested	N	N
Observation end date	2011-12-22T13:34:42	2011-12-22T13:39:44	Subarray requested	NONE	NONE
Read mode	TIMED	TIMED	Alternating exposures requested	N	N
			[s] Primary exposure time	0.000000	3.1

2.3 Aspect



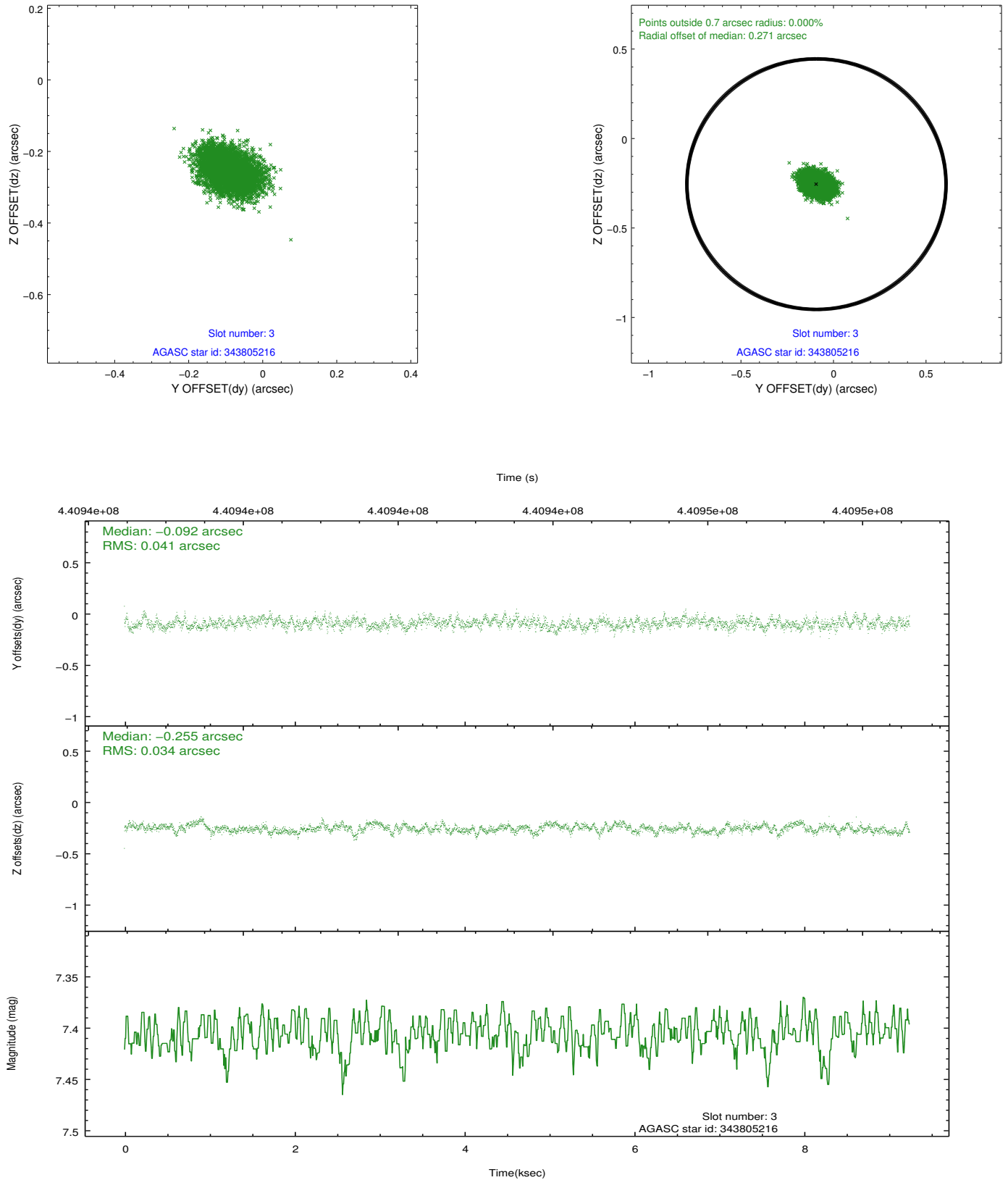


Slot Statistics

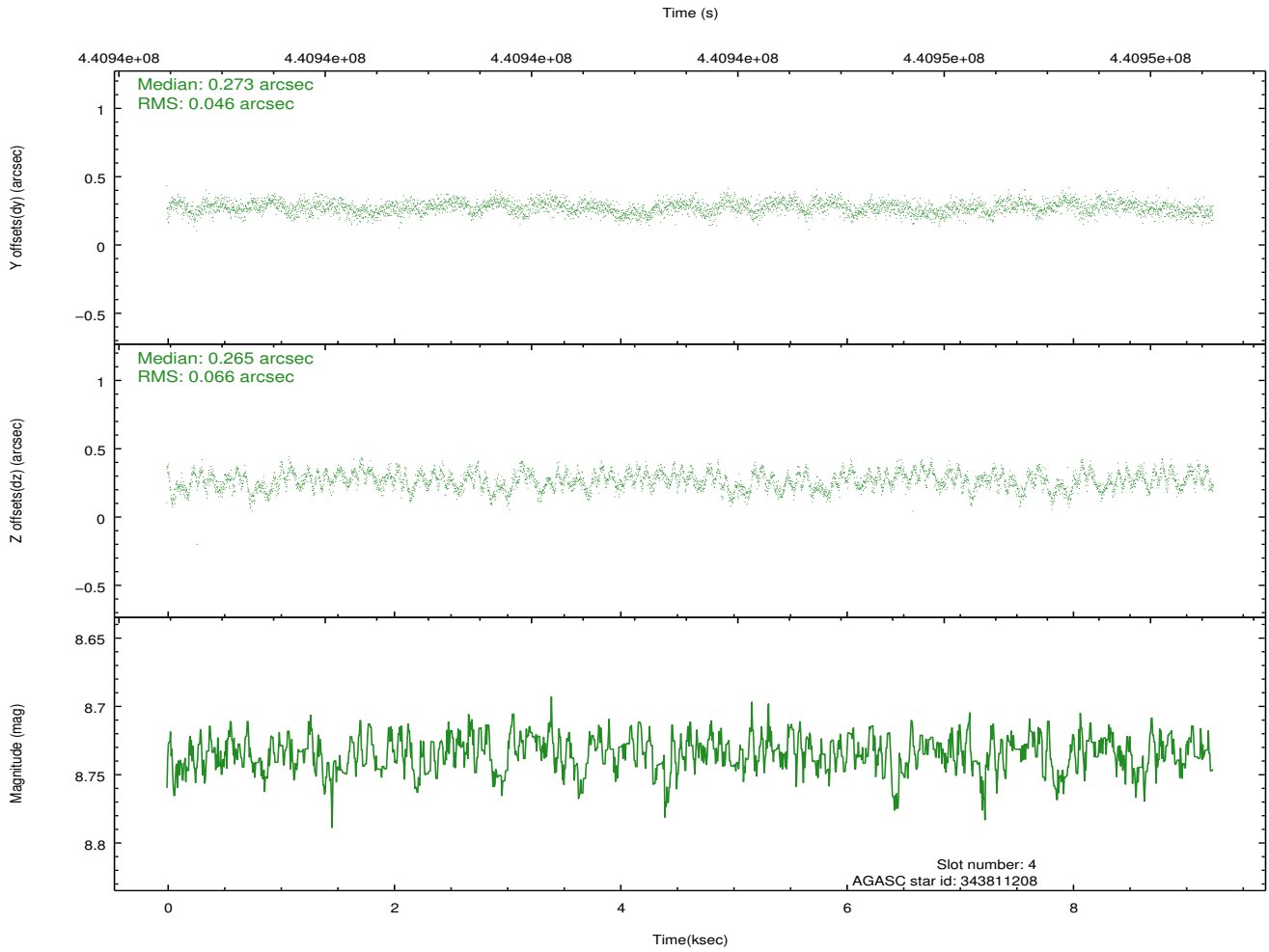
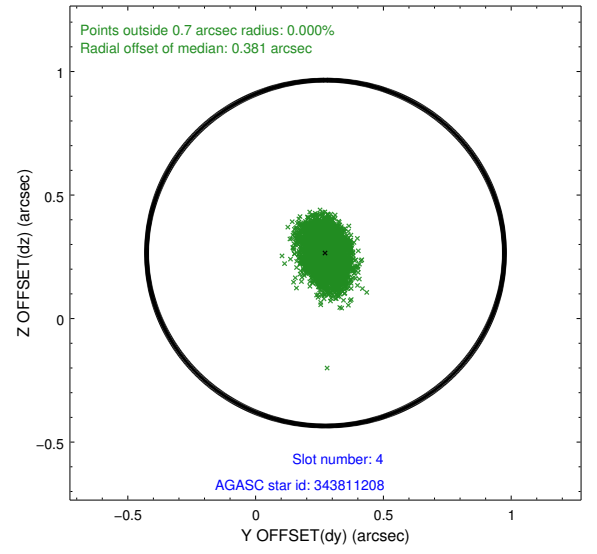
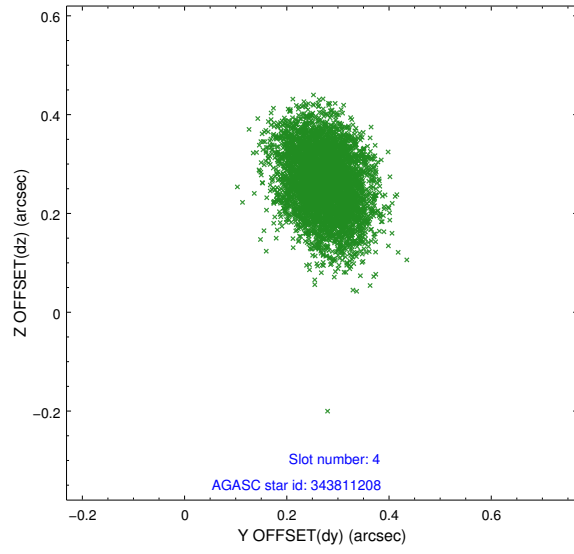
slot	status	id	mag	n_pts	med_dy	med_dz	dr1	dr2	ra	dec	mean_y	mean_z
0	FID	ACIS-I-1	7.11	2256	0.074	-0.012	0.018	0.026	0.000000	0.000000	924.35	-860.76
1	FID	ACIS-I-5	7.09	2256	-0.249	0.071	0.007	0.012	0.000000	0.000000	-1823.74	1036.54
2	FID	ACIS-I-6	7.11	2256	0.084	0.009	0.017	0.028	0.000000	0.000000	389.28	1681.63
3	GUIDE	343805216	7.41	4511	-0.092	-0.255	0.056	0.093	276.151639	30.801499	-666.53	1302.29
4	GUIDE	343811208	8.73	4511	0.273	0.265	0.086	0.138	275.640604	30.096556	-1938.46	-1405.73
5	GUIDE	343817080	6.81	4512	-0.257	-0.112	0.079	0.122	276.713071	30.968387	979.34	2113.52
6	GUIDE	343816136	7.30	4512	0.026	0.229	0.052	0.083	275.497133	30.046184	-2361.06	-1637.54
7	GUIDE	343804504	8.98	4508	0.052	-0.136	0.107	0.169	276.388473	31.044115	-47.97	2258.48

2.4 Star Slots

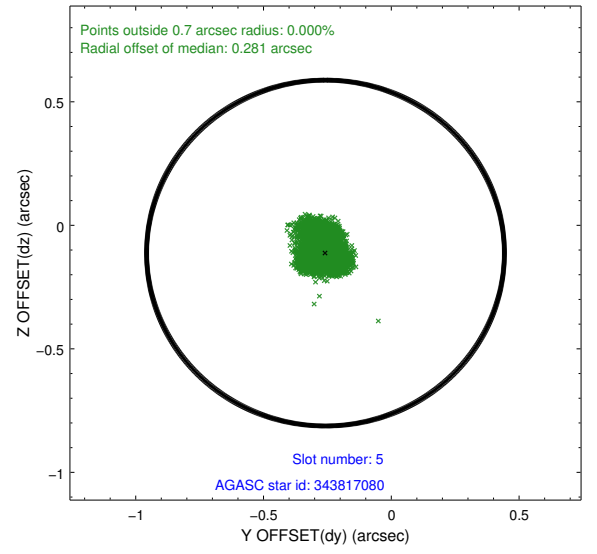
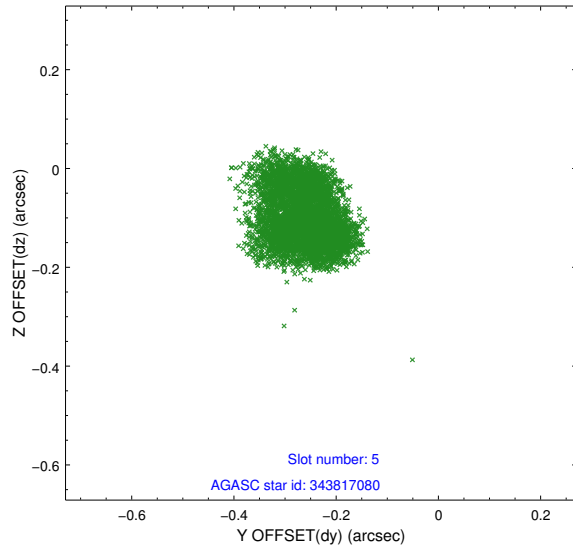
2.4.1 Slot 3



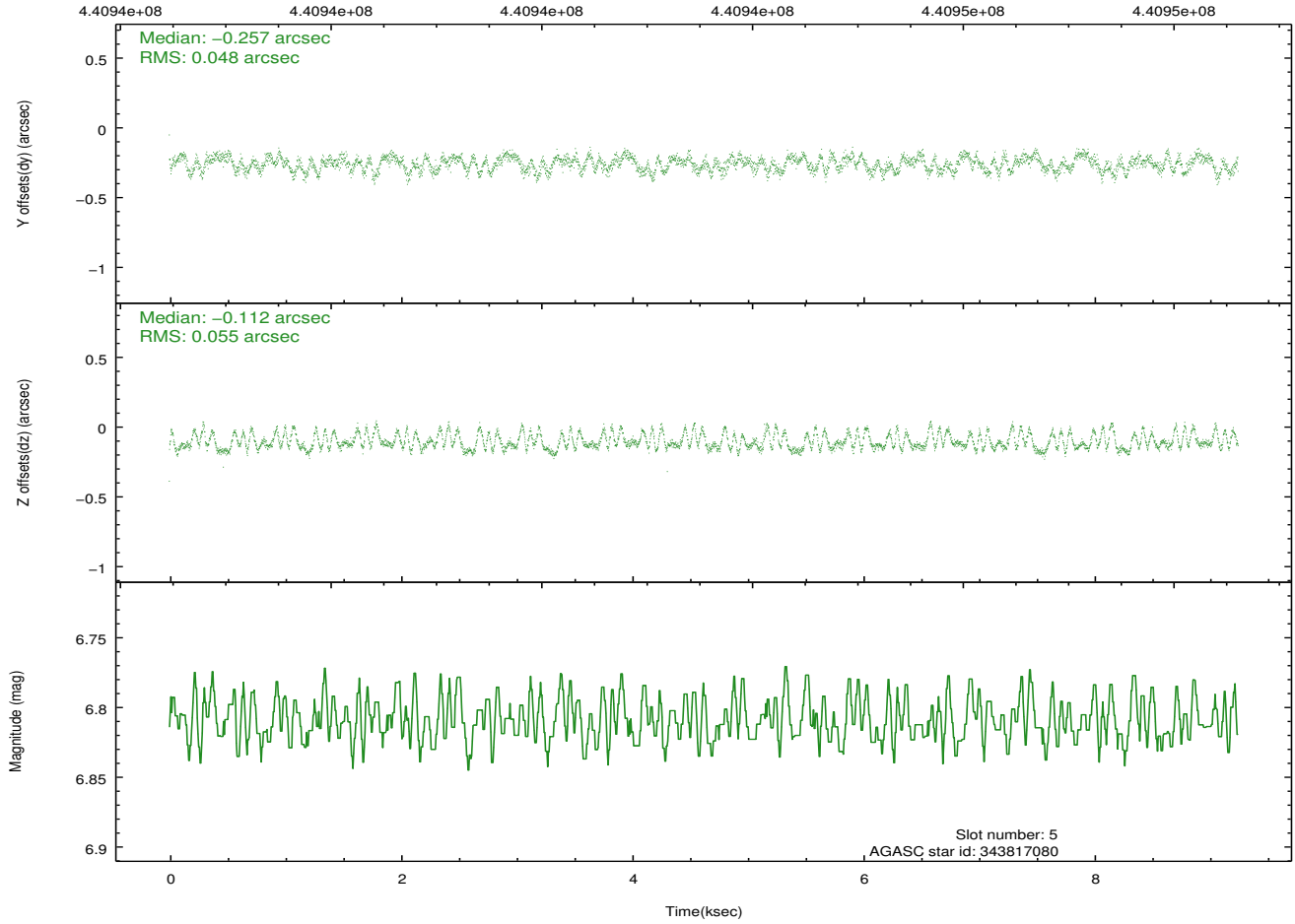
2.4.2 Slot 4



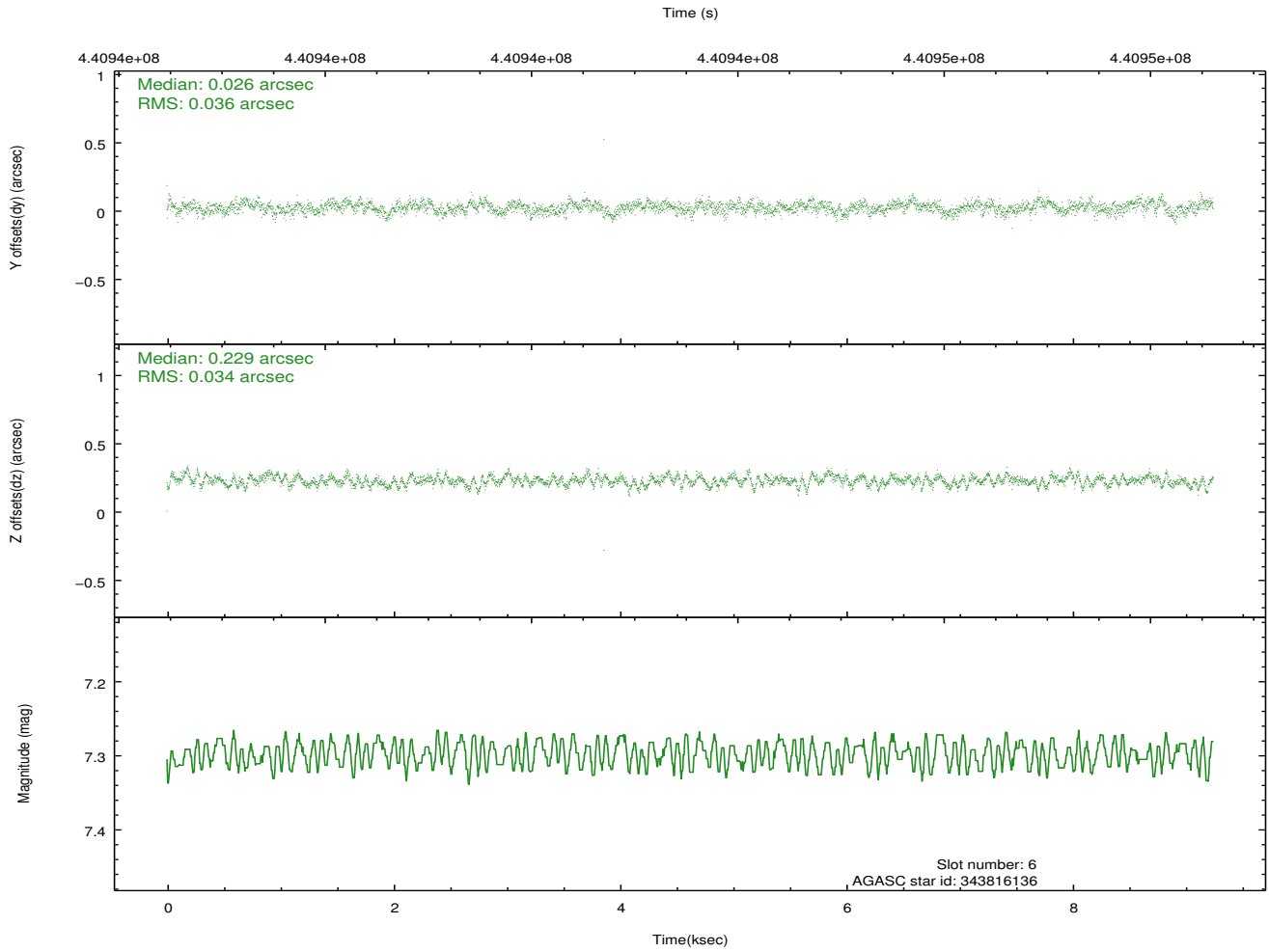
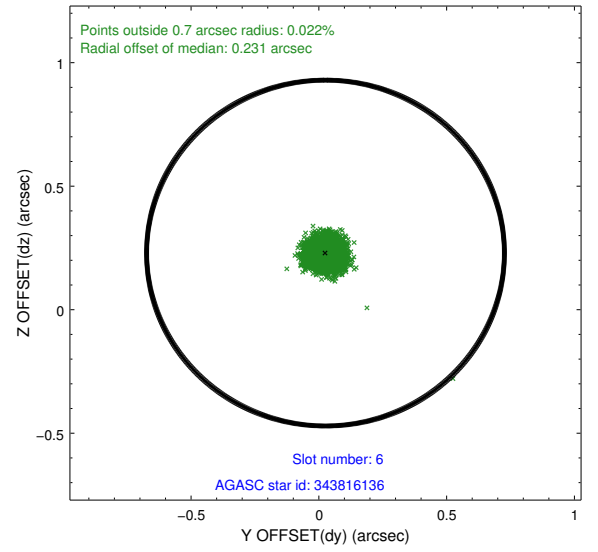
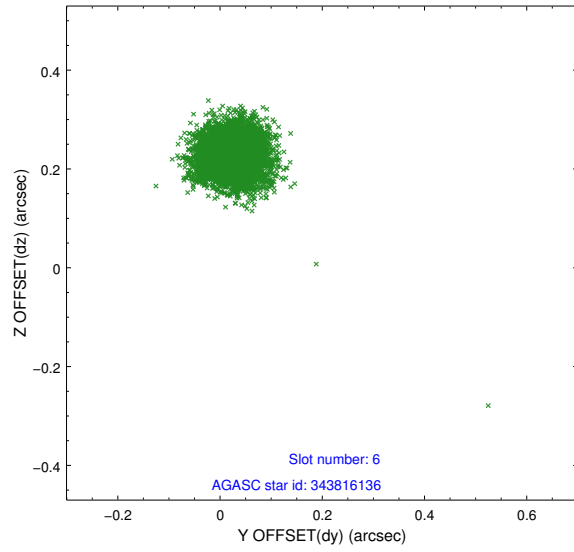
2.4.3 Slot 5



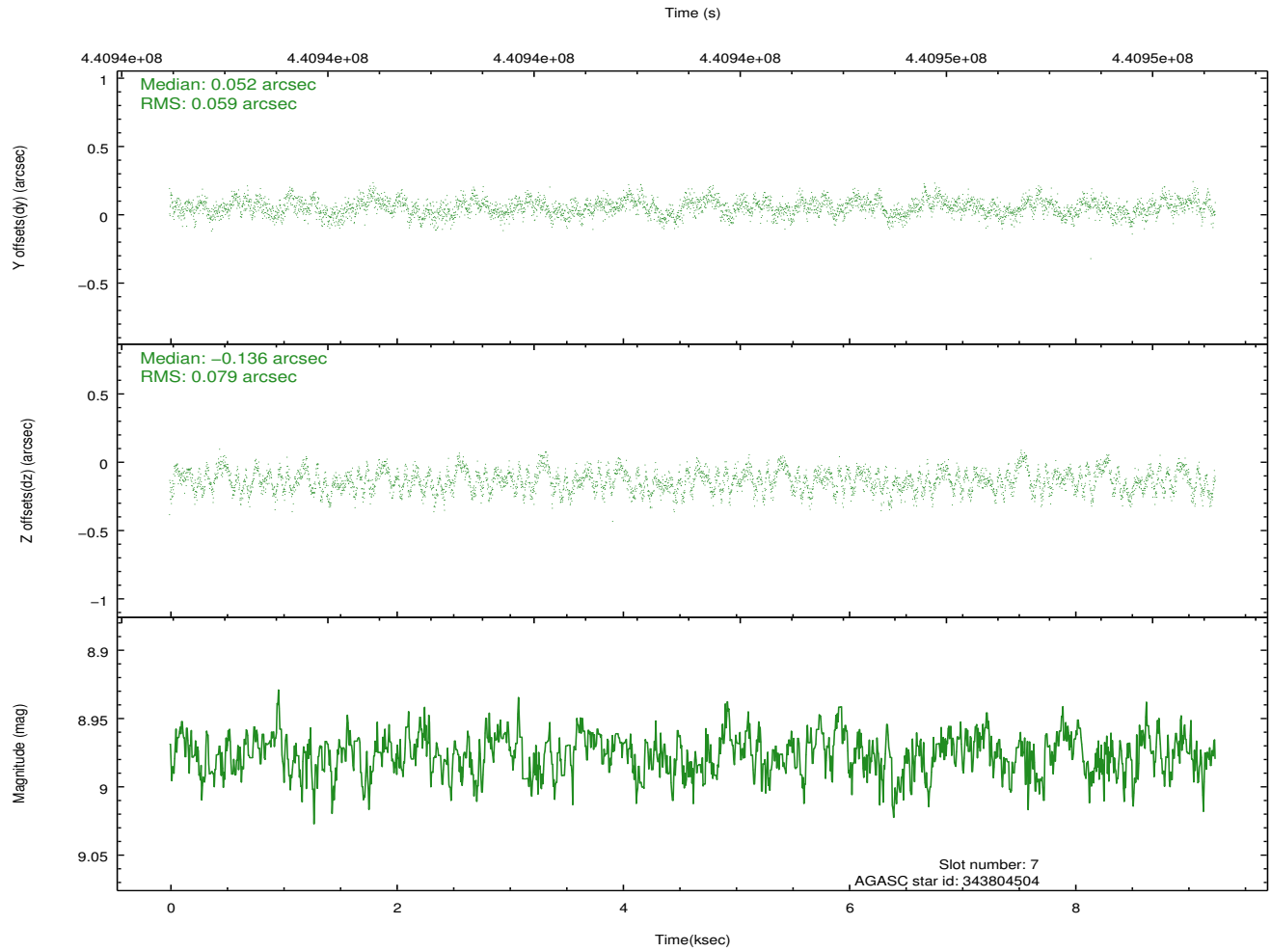
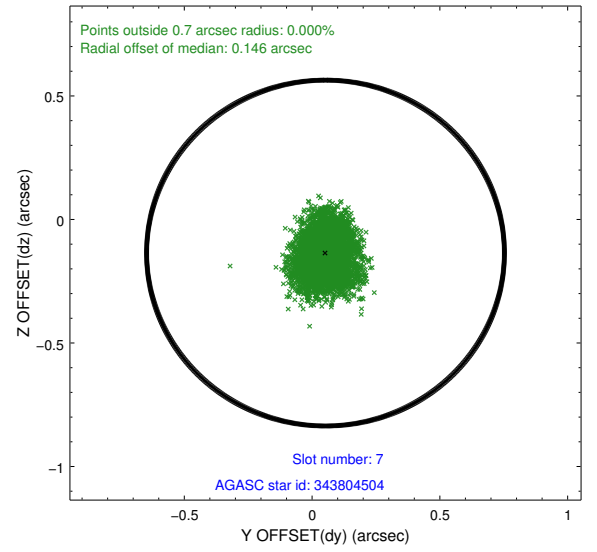
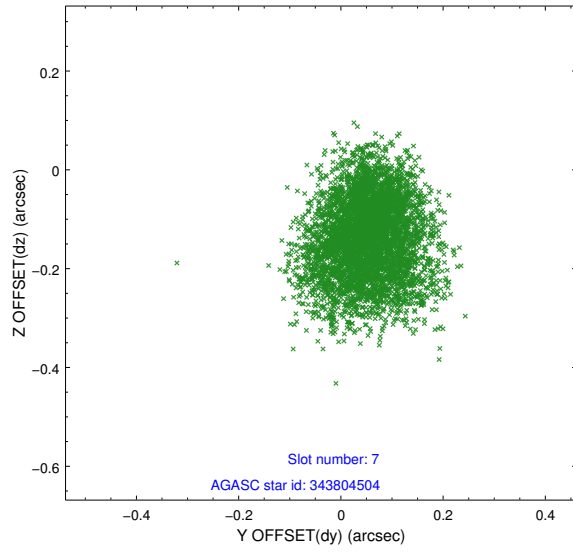
Time (s)



2.4.4 Slot 6

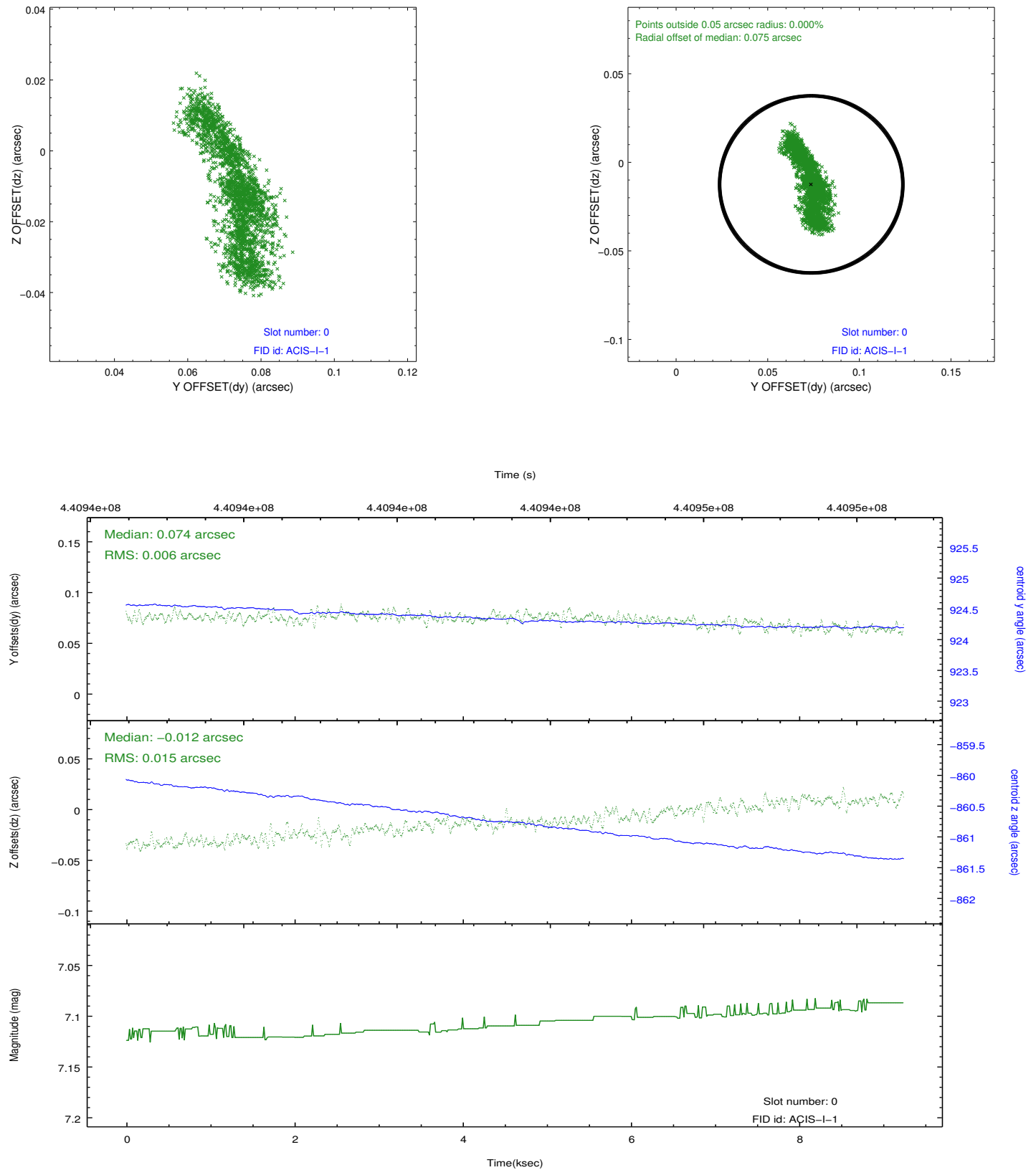


2.4.5 Slot 7

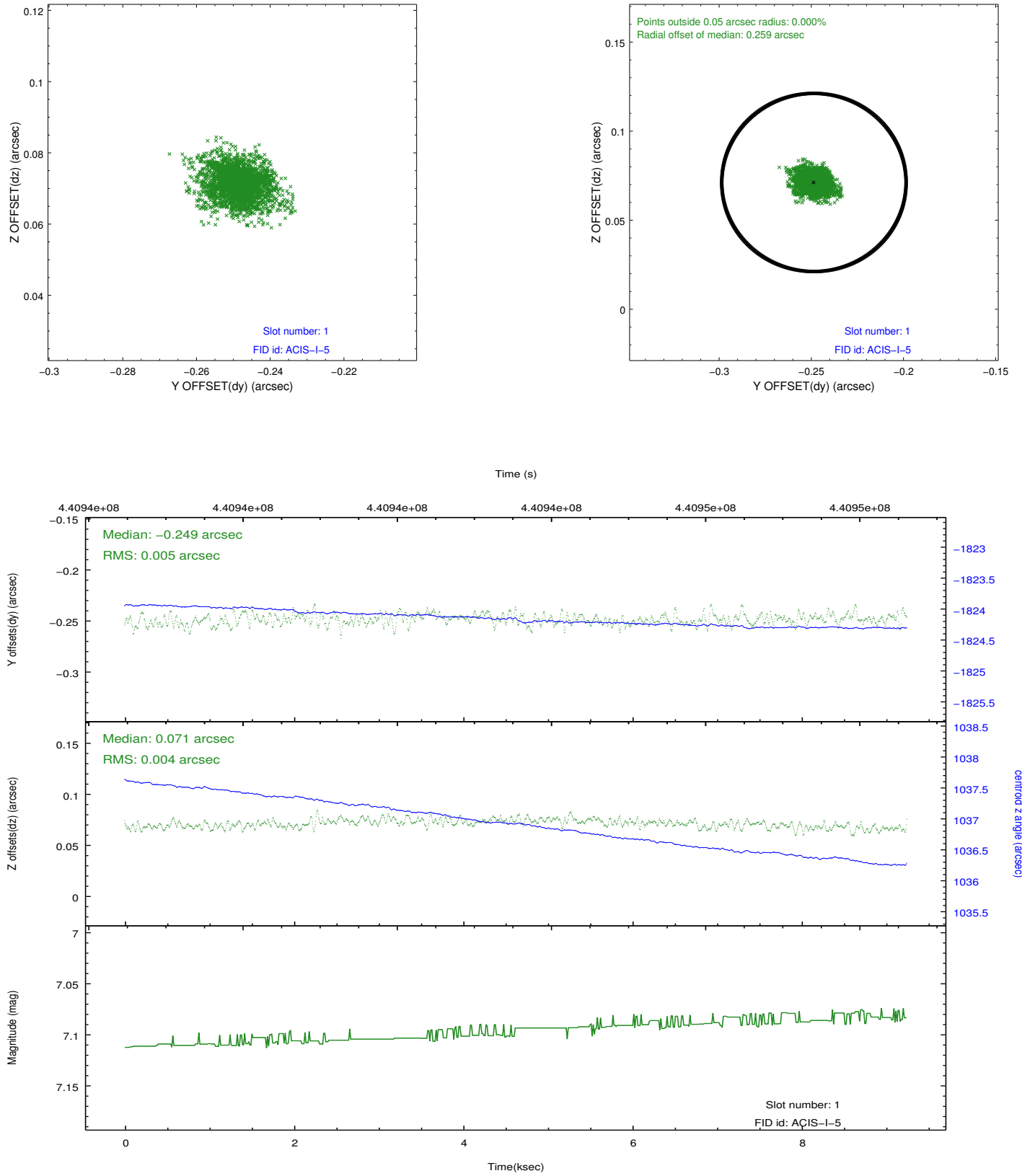


2.5 FID Slots

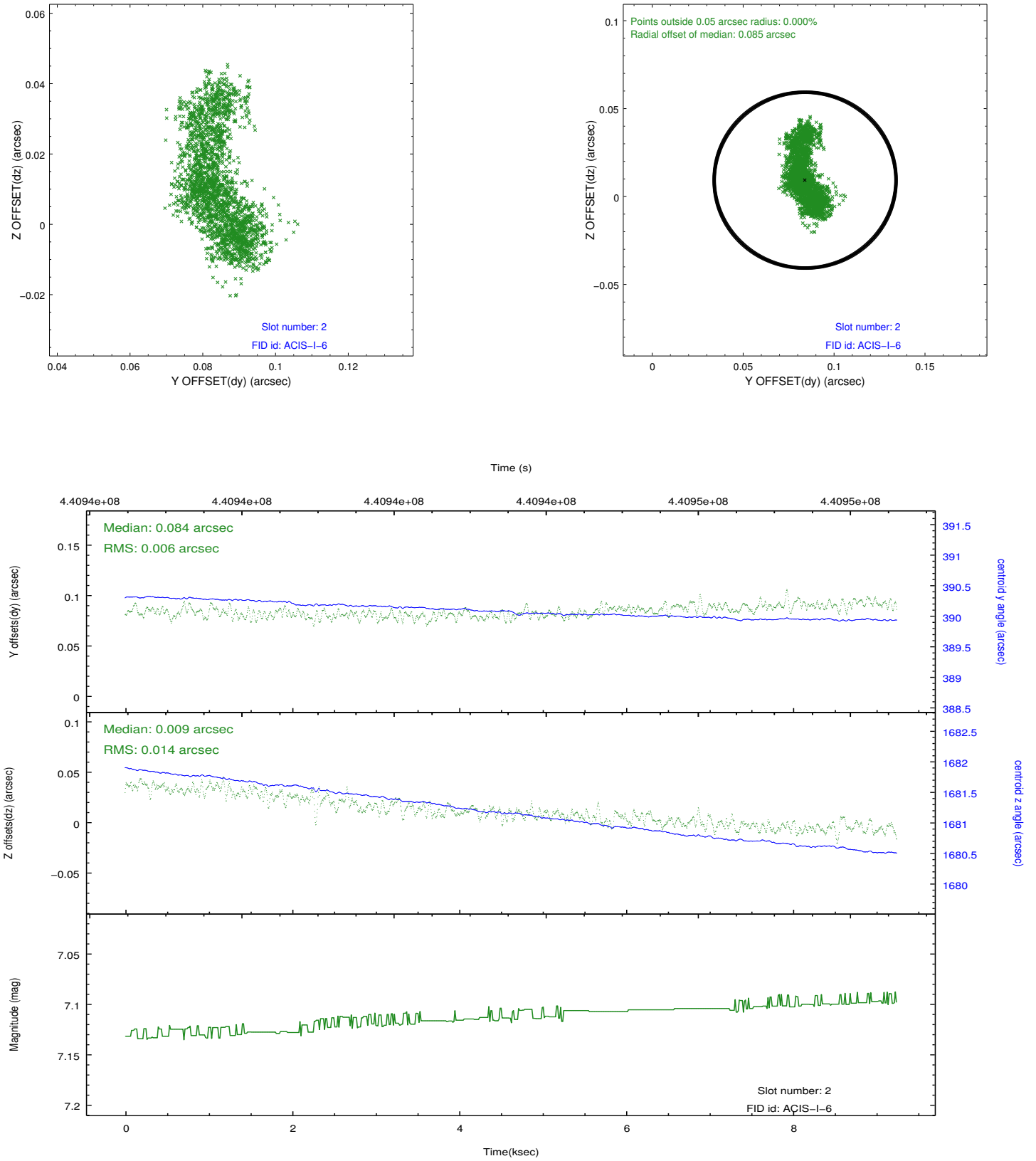
2.5.1 Slot 0



2.5.2 Slot 1



2.5.3 Slot 2



A Summary

A.1 Status

V&V Scientist	Jen Lauer
V&V Date (YYYY-MM-DD)	2012.02.29
V&V Edition	1
V&V Disposition and Status	OK
V&V Charge Time	9.0551000696421

A.2 Comments