

V&V Reference Report

L2 ASCDS Version : 8.4.3

Observation 14209 - L2 Version 1
Chandra X-Ray Center

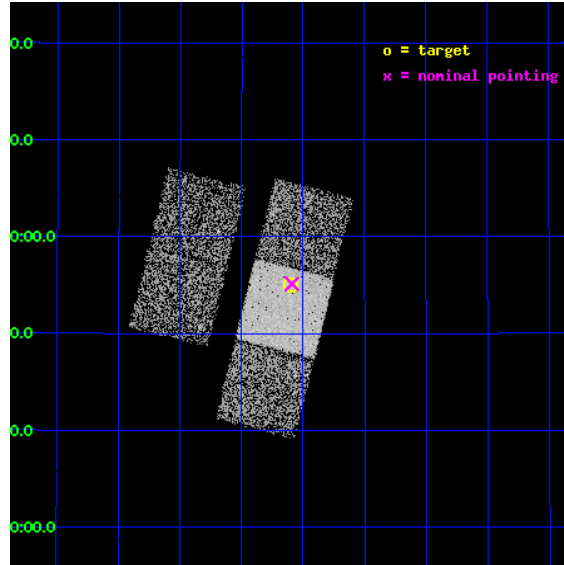
L2 Processing Date : Jan 13 2012

Contents

1	Front	2
2	OBI	3
2.1	OBI	3
2.1.1	Images	3
2.1.2	Bias	3
2.1.3	Parameters	4
2.1.4	Events	4
2.2	Compared Parameters	5
2.3	Aspect	6
2.4	Star Slots	9
2.4.1	Slot 3	9
2.4.2	Slot 4	10
2.4.3	Slot 5	11
2.4.4	Slot 6	12
2.4.5	Slot 7	13
2.5	FID Slots	14
2.5.1	Slot 0	14
2.5.2	Slot 1	15
2.5.3	Slot 2	16
A	Summary	17
A.1	Status	17
A.2	Comments	17

1 Front

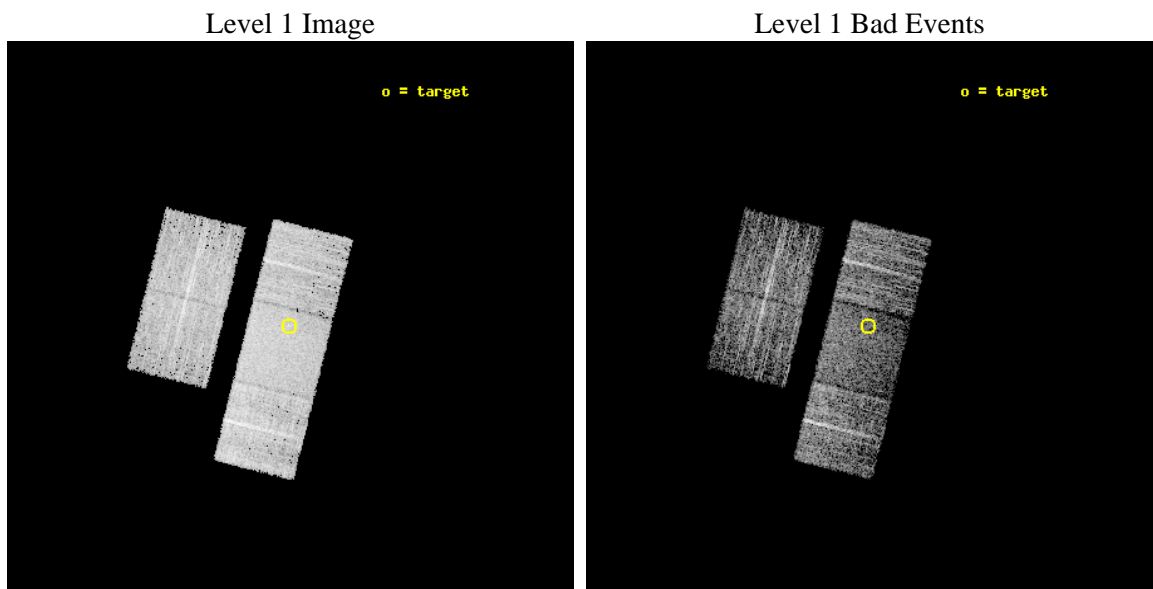
seq_num	702705	Sequence number
obs_id	14209	Observation id
title	Exploratory X-ray Monitoring of z>4 Radio-Quiet Quasars	Proposal t
observer	Prof. Ohad Shemmer	Principal investigator
object	PSS 0926+3055	Source name
dtcycle	0	
cycle	P	events from which exps? Prim/Second/Both
ra_targ	141.65125	Observer's specified target RA [deg]
dec_targ	30.918028	Observer's specified target Dec [deg]
ra_nom	141.64783060174	Nominal RA [deg]
dec_nom	30.919024909298	Nominal Dec [deg]
roll_nom	104.00230958046	Nominal Roll [deg]
revision	1	Processing version of data
ontime	5040.6000387669	Sum of GTIs [s]
livetime	4974.7408884246	Livetime [s]
ontime2	5040.6000387669	Sum of GTIs [s]
ontime3	5040.6000387669	Sum of GTIs [s]
ontime6	5040.6000387669	Sum of GTIs [s]
ontime7	5040.6000387669	Sum of GTIs [s]
ontime8	5040.6000387669	Sum of GTIs [s]
l2events	31404	Number of level 2 events



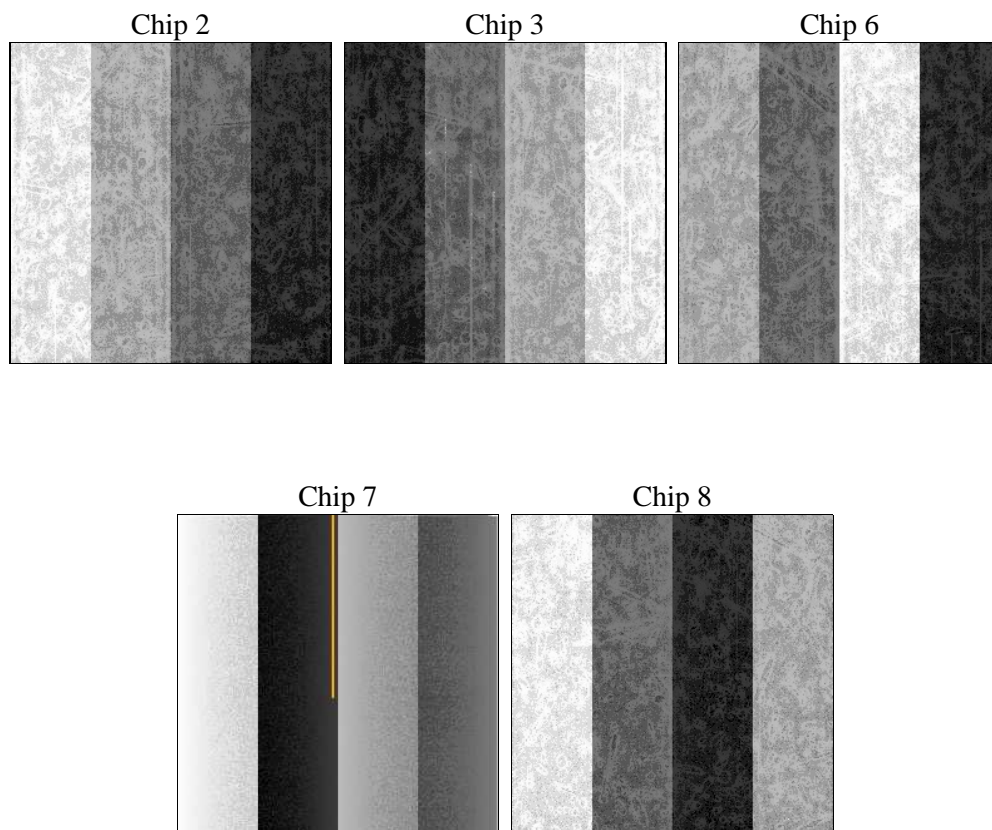
2 OBI

2.1 OBI

2.1.1 Images



2.1.2 Bias



2.1.3 Parameters

obi_num	0	Obi number	sched_exp_time	5000.000000	[s] Scheduled observation exposure time
ascdsver	8.4.3	Processing system revision	ontime	5040.6000387669	Sum of GTIs [s]
caldsver	4.4.7	 	ontime2	5040.6000387669	Sum of GTIs [s]
date	2012-01-13T18:46:16	Date and time of file creation	ontime3	5040.6000387669	Sum of GTIs [s]
revision	1	Processing version of data	ontime6	5040.6000387669	Sum of GTIs [s]
			ontime7	5040.6000387669	Sum of GTIs [s]
			ontime8	5040.6000387669	Sum of GTIs [s]
			l1events	179930	Number of level 1 events

2.1.4 Events

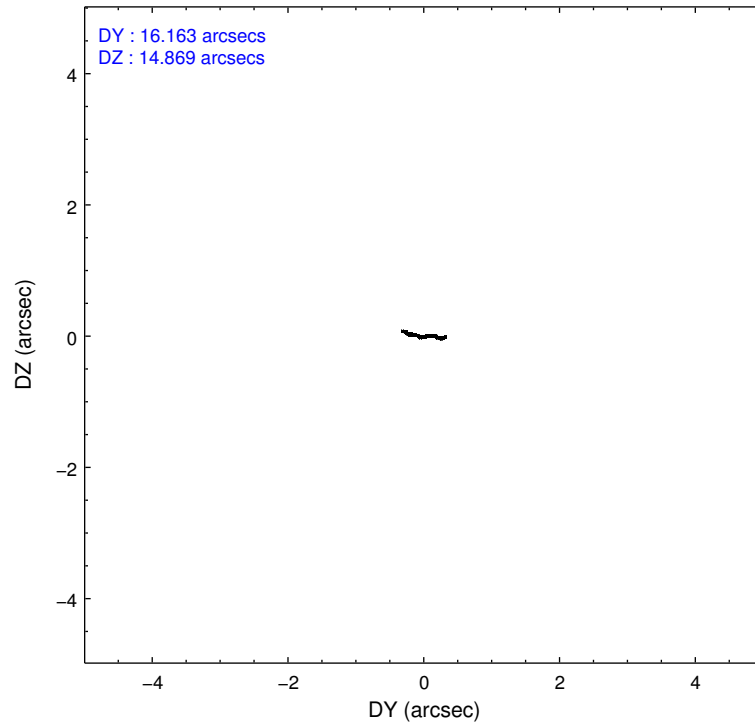
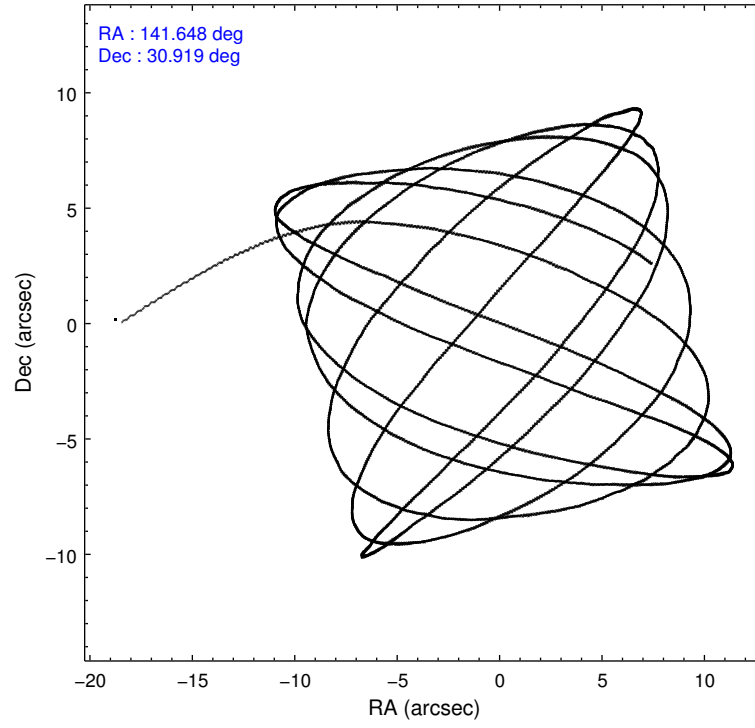
	ccd 2	ccd 3	ccd 6	ccd 7	ccd 8
level 1 events	32061	30042	33746	41576	42505
rejected events	28499	26572	29770	23125	31213
rejected %	88%	88%	88%	55%	73%

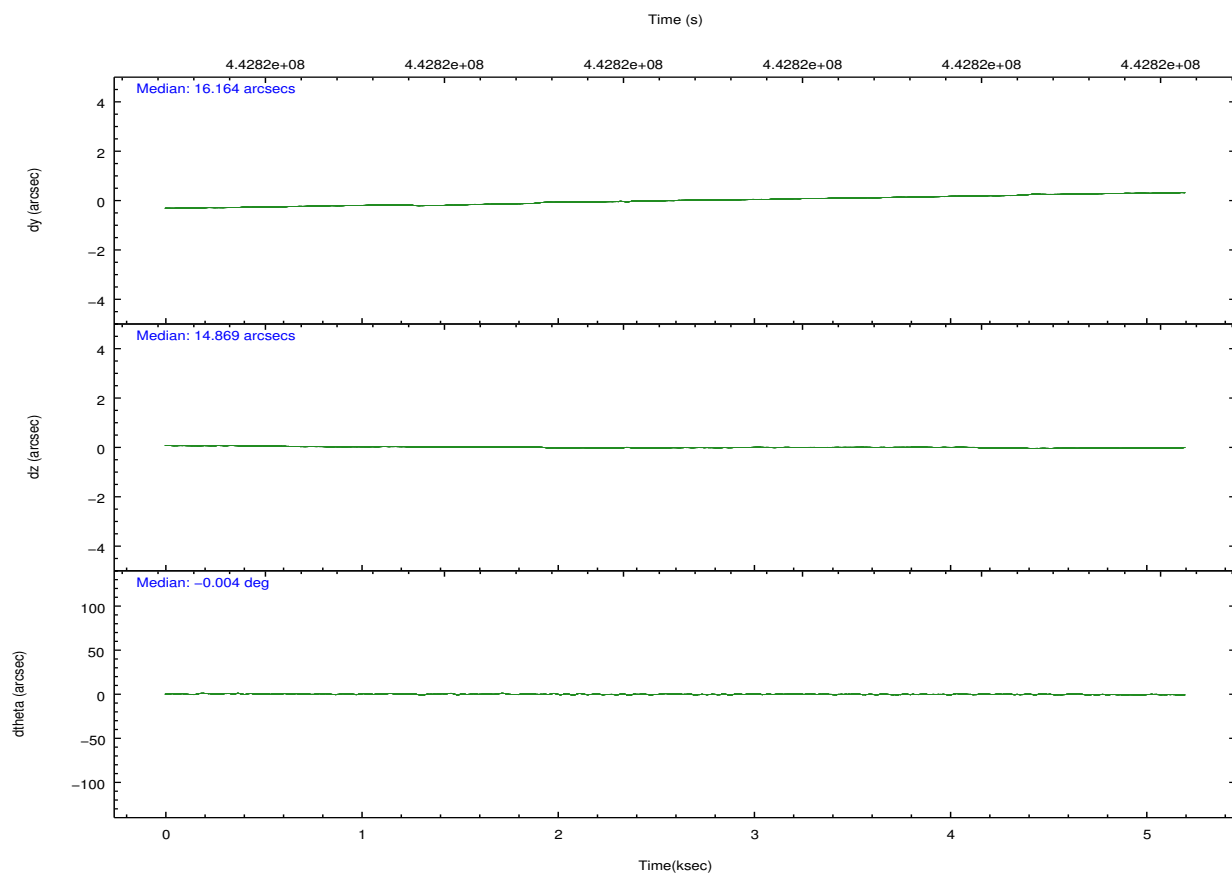
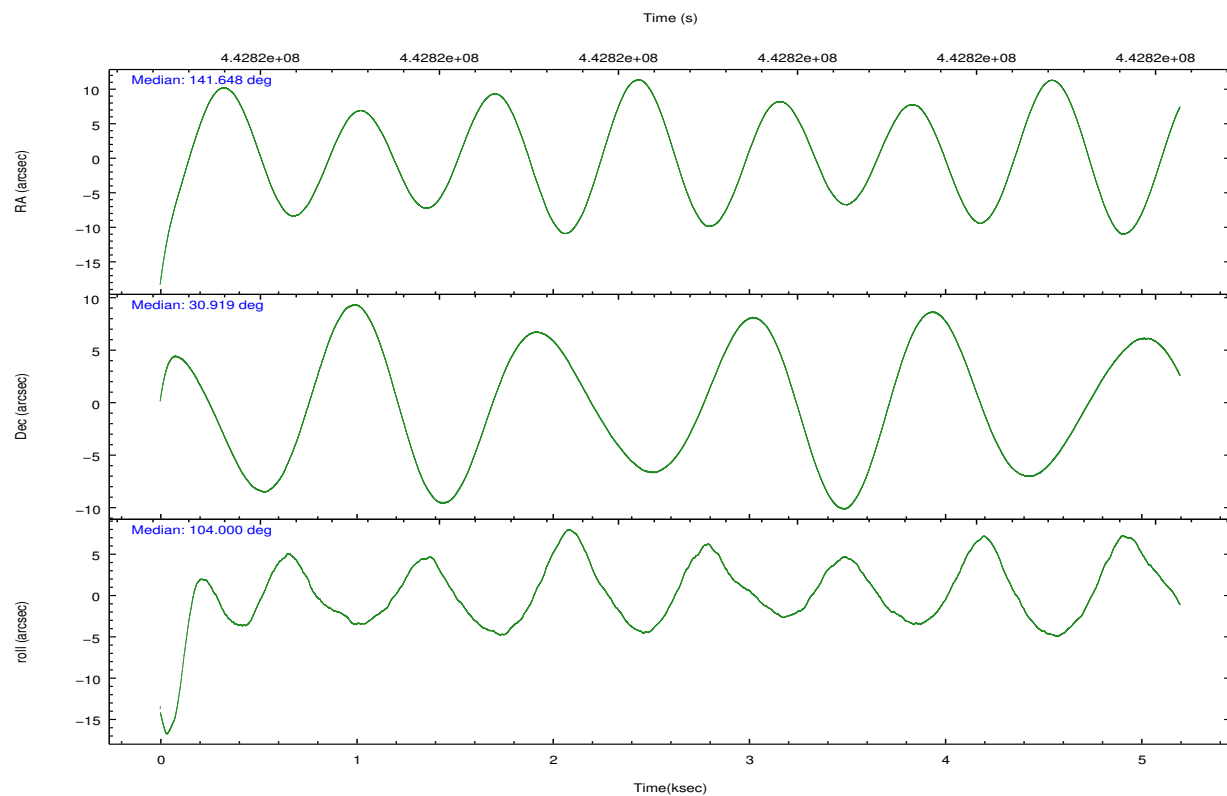
	ccd 2	ccd 3	ccd 6	ccd 7	ccd 8
grade 0 events	1316	1222	1379	1672	3355
	4%	4%	4%	4%	7%
grade 1 events	17	16	8	53	39
	0%	0%	0%	0%	0%
grade 2 events	883	809	867	3728	2613
	2%	2%	2%	8%	6%
grade 3 events	371	359	435	1687	1214
	1%	1%	1%	4%	2%
grade 4 events	356	357	395	1646	1142
	1%	1%	1%	3%	2%
grade 5 events	1338	1521	1567	4372	2233
	4%	5%	4%	10%	5%
grade 6 events	640	725	909	9746	2982
	1%	2%	2%	23%	7%
grade 7 events	27140	25033	28186	18672	28927
	84%	83%	83%	44%	68%

2.2 Compared Parameters

Parameter	Planned	Actual	Parameter	Planned	Actual
Instrument	ACIS	ACIS	Obspar format version number	7	7
Detector	ACIS-23678	ACIS-23678	Obspar file type	PREDICTED	ACTUAL
Grating	NONE	NONE	Obspar update status	NONE	UPDATED
Data mode	FAINT	FAINT	CCD I0 on	N	N
Observation mode	POINTING	POINTING	CCD I1 on	N	N
[deg] Pointing RA	141.670354	141.6478306017356	CCD I2 on	O2	Y
[deg] Pointing Dec	30.899581	30.91902490929762	CCD I3 on	O1	Y
[deg] Pointing Roll	103.834130	104.0023095804626	CCD S0 on	N	N
[mm] SIM focus pos	-0.684267	-0.6828225247311905	CCD S1 on	N	N
[mm] SIM defocus	0	0.001444936568705701	CCD S2 on	Y	Y
[mm] SIM translation stage pos	-190.132523	-190.1400660498719	CCD S3 on	Y	Y
[mm] SIM translation stage offset	0	0.00754346686406393	CCD S4 on	Y	Y
[s] Observation start time (MET)	442817890.184000	442816935.20152	CCD S5 on	N	N
Observation start date	2012-01-13T04:57:04	2012-01-13T04:42:15	Number of optional ACIS chips dropped	0	0
[s] Observation end time (MET)	442822890.184000	442823596.16438	On-chip summing requested	N	N
Observation end date	2012-01-13T06:20:24	2012-01-13T06:33:16	Subarray requested	NONE	NONE
Read mode	TIMED	TIMED	Alternating exposures requested	N	N
			[s] Primary exposure time	0.000000	3.1

2.3 Aspect



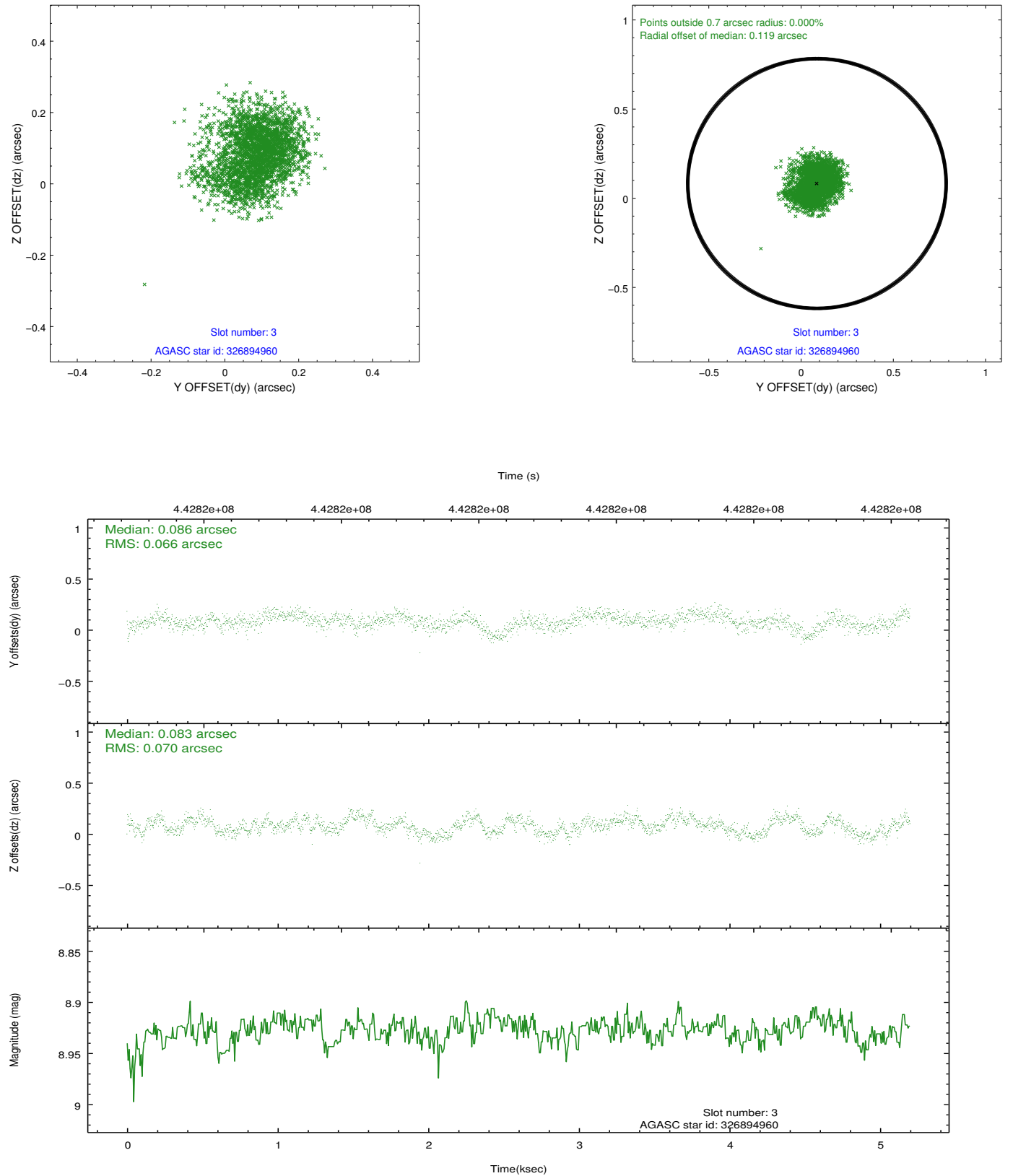


Slot Statistics

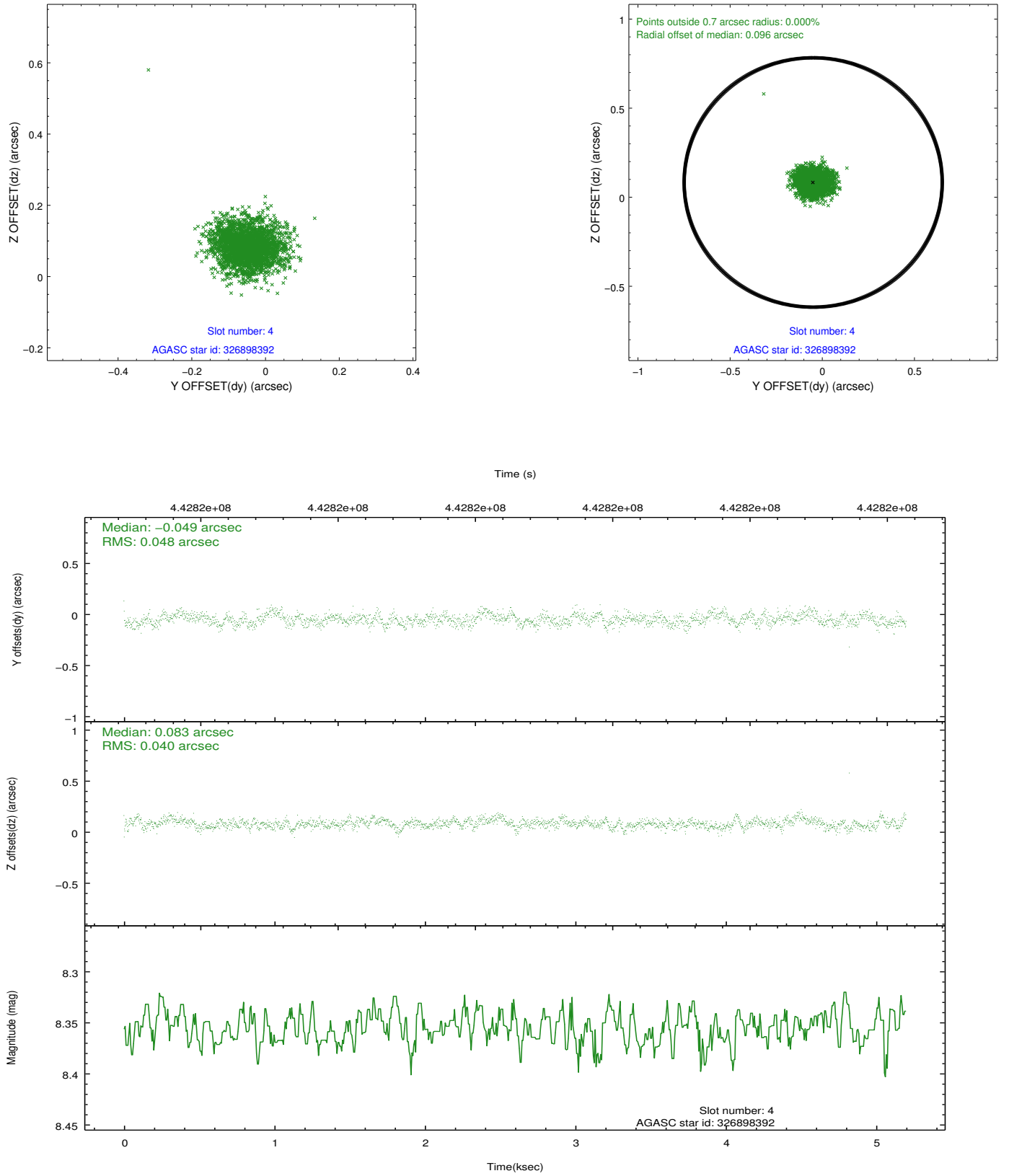
slot	status	id	mag	n_pts	med_dy	med_dz	dr1	dr2	ra	dec	mean_y	mean_z
0	FID	ACIS-S-2	6.86	1268	-0.106	0.004	0.008	0.012	0.000000	0.000000	-769.26	-1736.25
1	FID	ACIS-S-4	6.95	1267	0.191	0.050	0.006	0.011	0.000000	0.000000	2143.77	171.08
2	FID	ACIS-S-5	6.98	1268	-0.116	-0.045	0.007	0.012	0.000000	0.000000	-1820.63	165.97
3	GUIDE	326894960	8.93	2537	0.086	0.083	0.104	0.162	141.736989	30.296358	-2158.57	318.27
4	GUIDE	326898392	8.36	2535	-0.049	0.083	0.066	0.109	141.640946	31.182886	1010.64	-155.96
5	GUIDE	326899216	9.24	2535	0.079	-0.169	0.099	0.160	141.627351	30.776310	-398.55	235.09
6	GUIDE	326899384	8.93	2534	-0.123	0.090	0.091	0.150	141.976290	31.465042	1752.23	-1398.59
7	GUIDE	326903944	7.62	2536	0.007	-0.082	0.083	0.140	141.372366	30.493208	-1200.03	1246.29

2.4 Star Slots

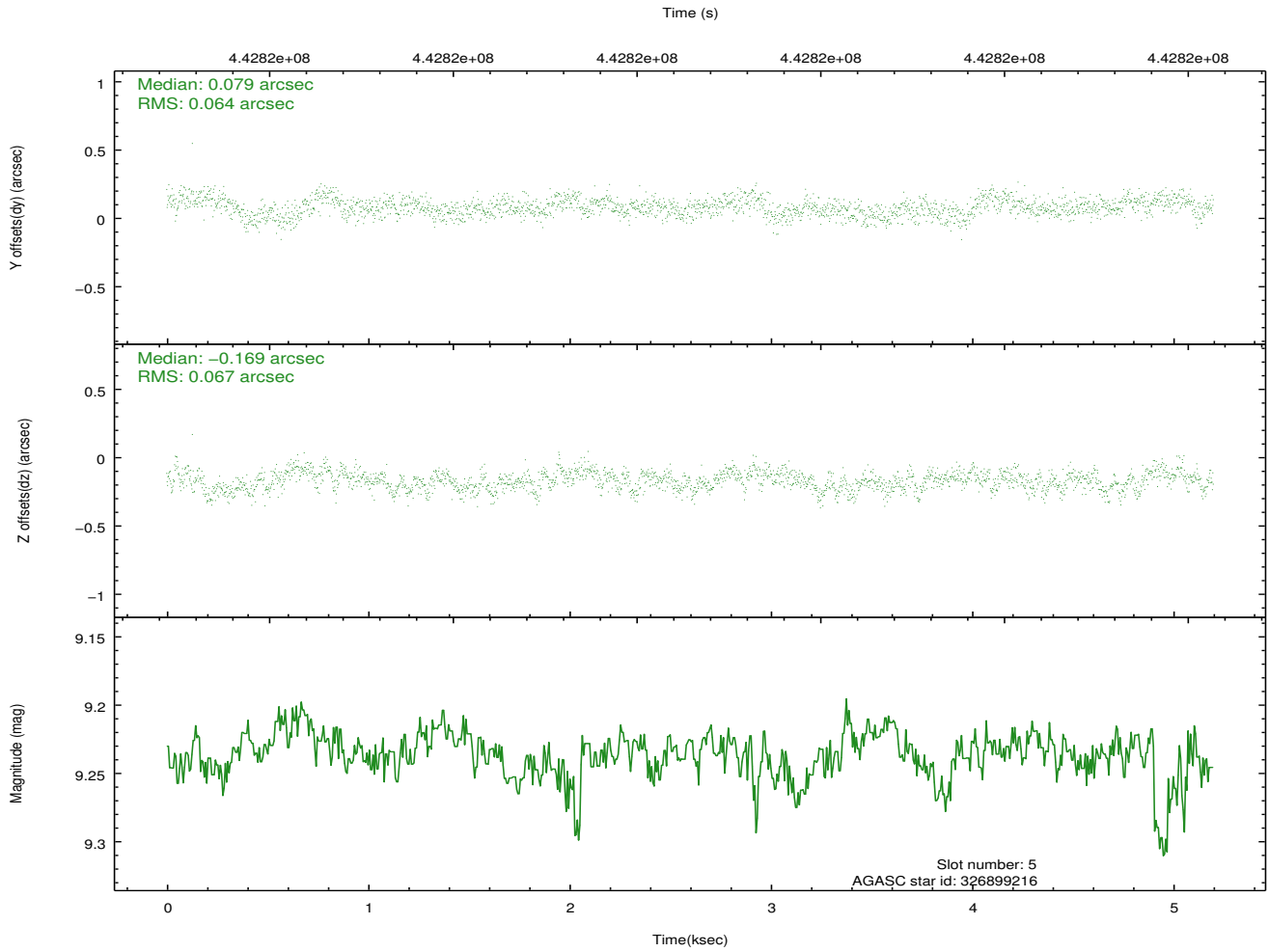
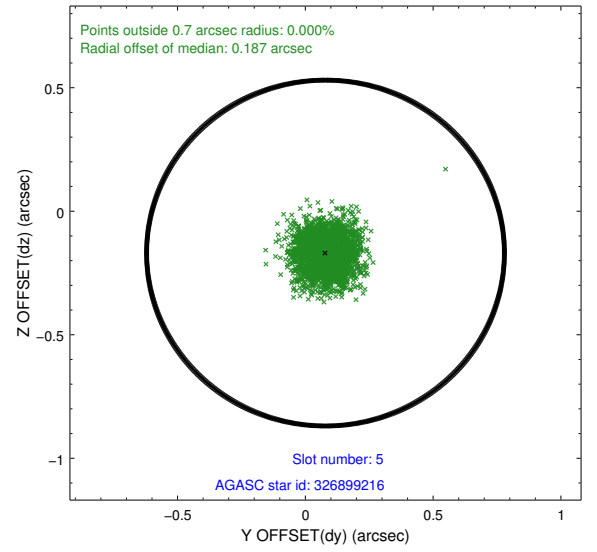
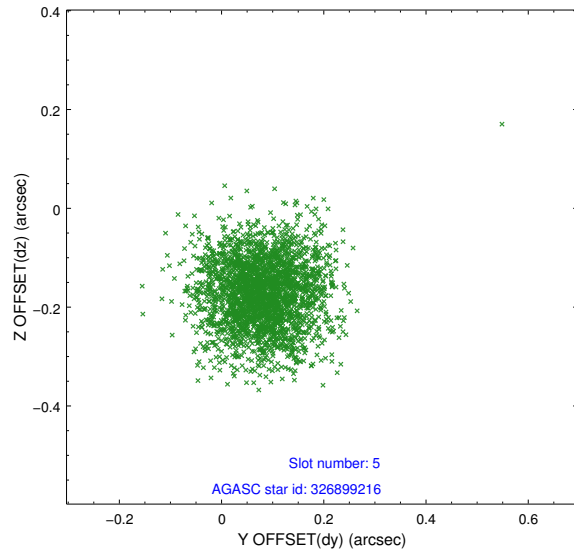
2.4.1 Slot 3



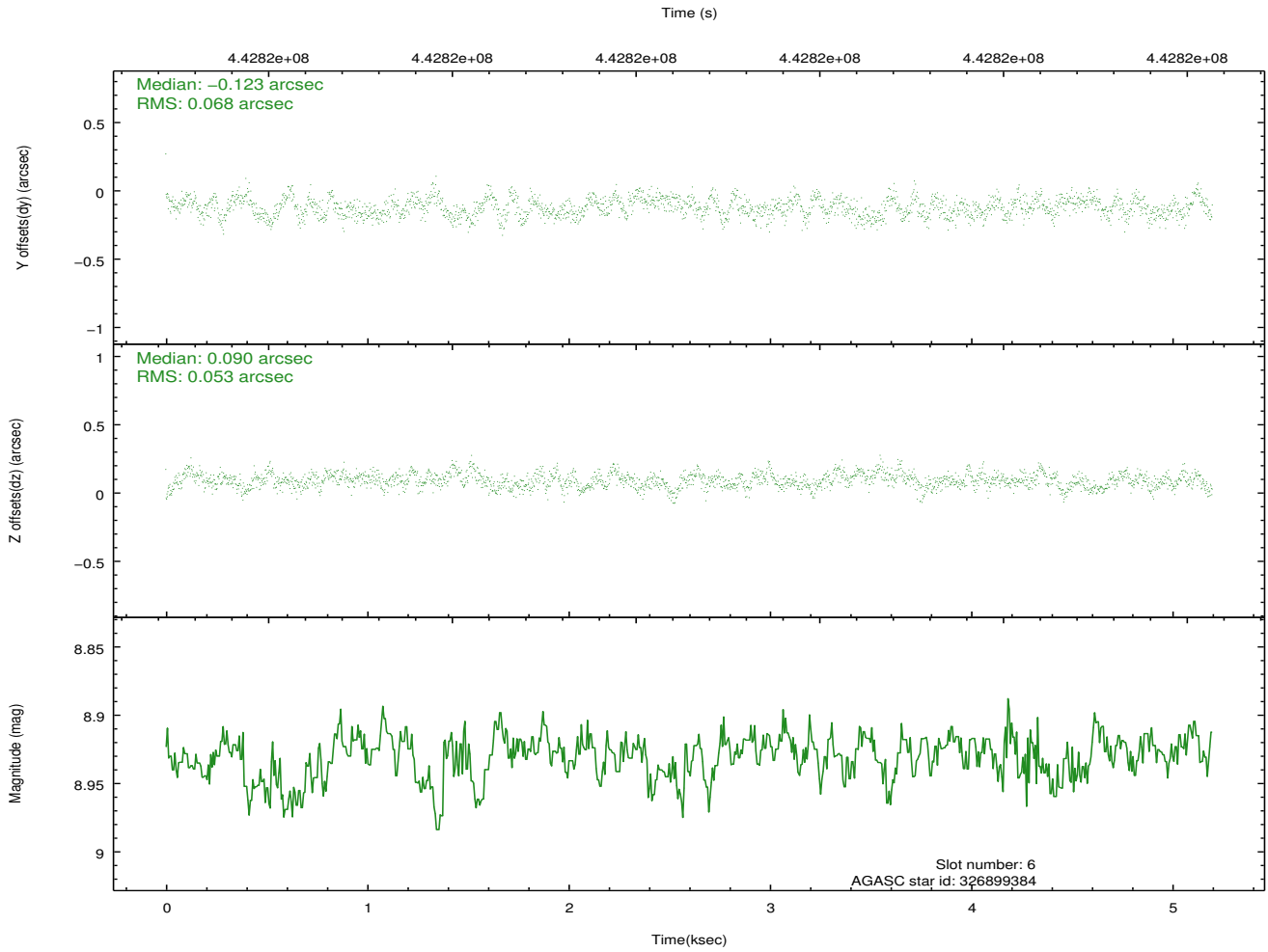
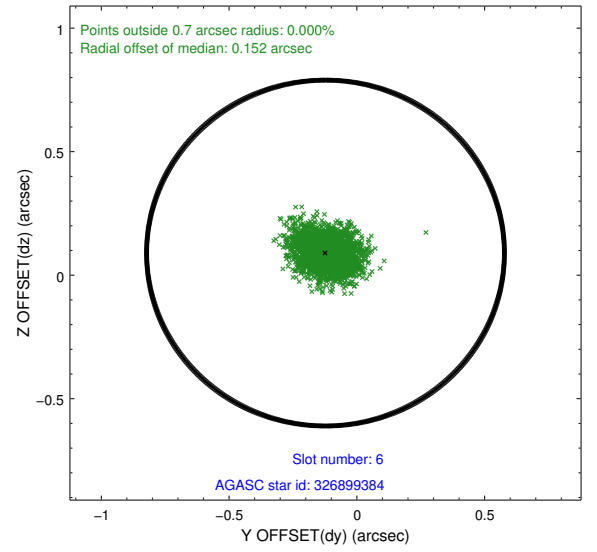
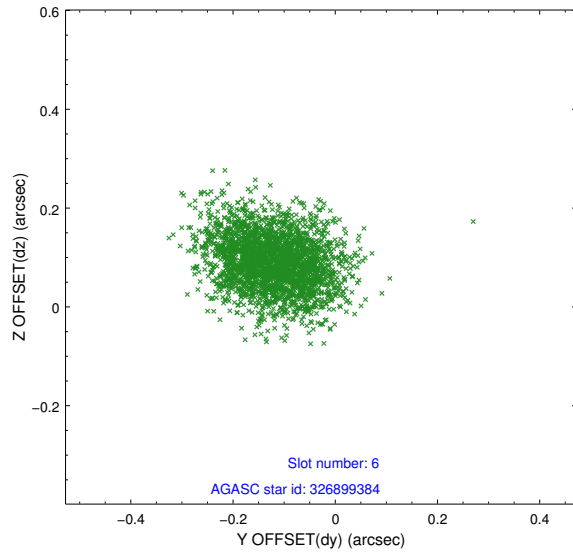
2.4.2 Slot 4



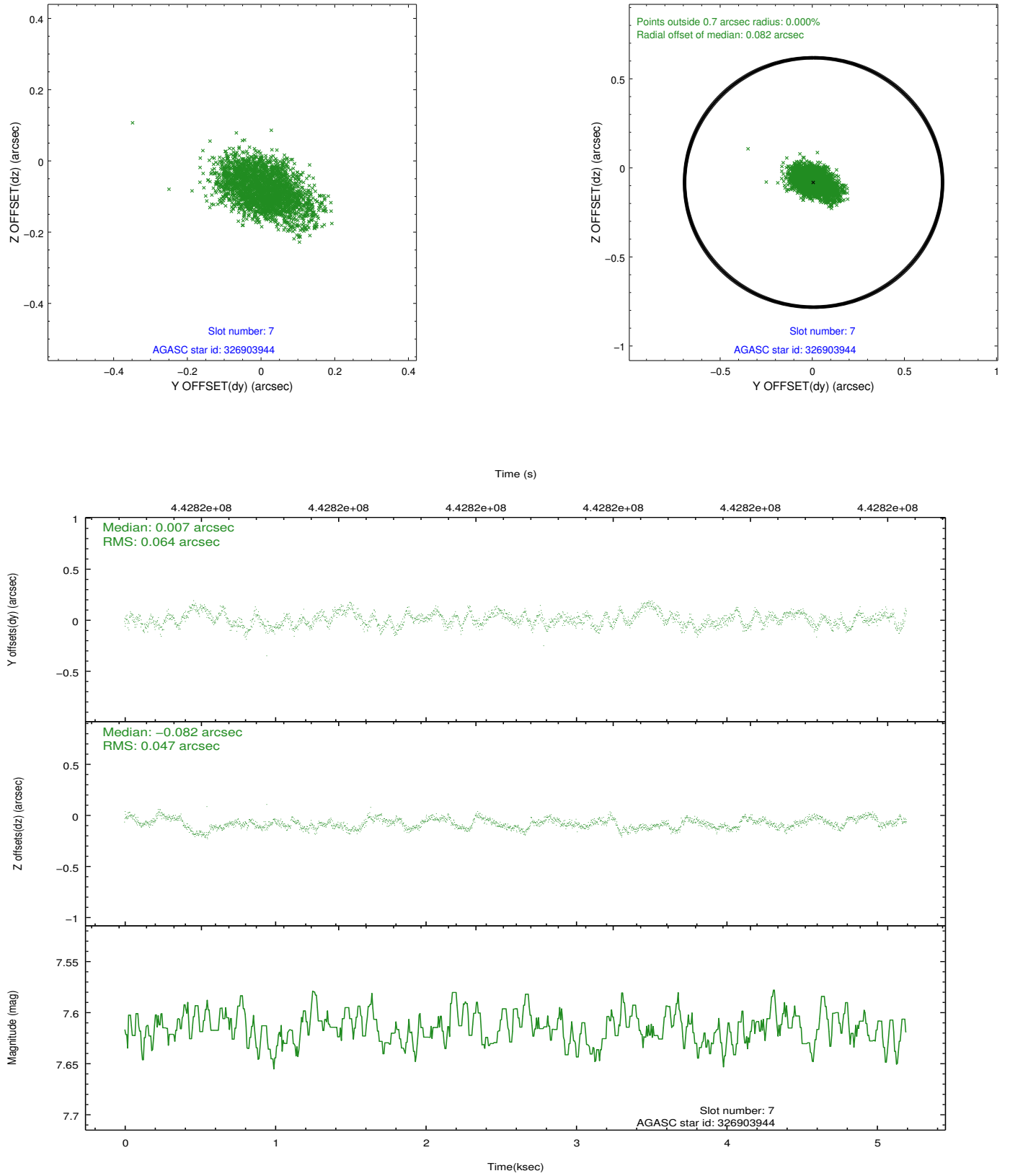
2.4.3 Slot 5



2.4.4 Slot 6

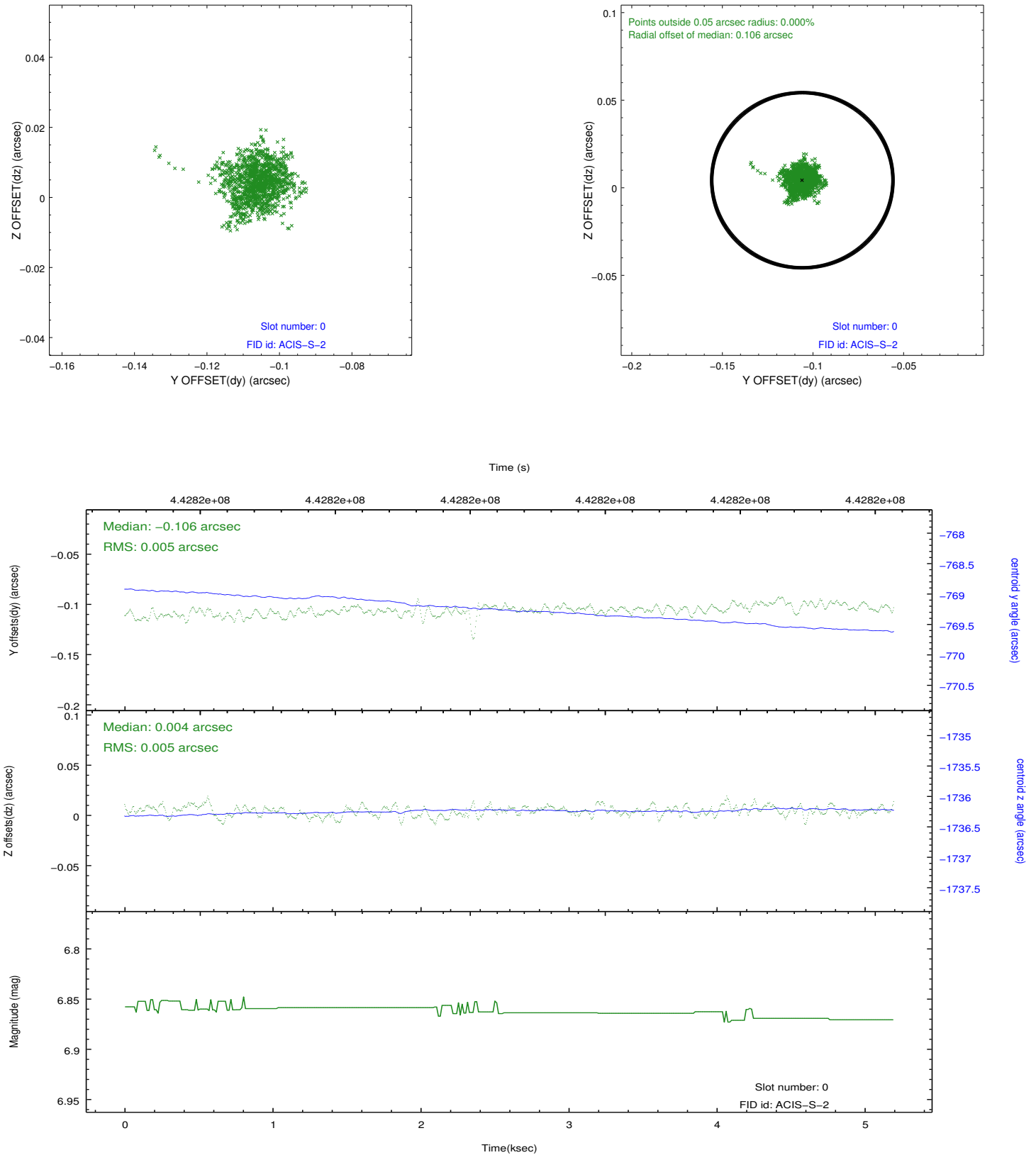


2.4.5 Slot 7

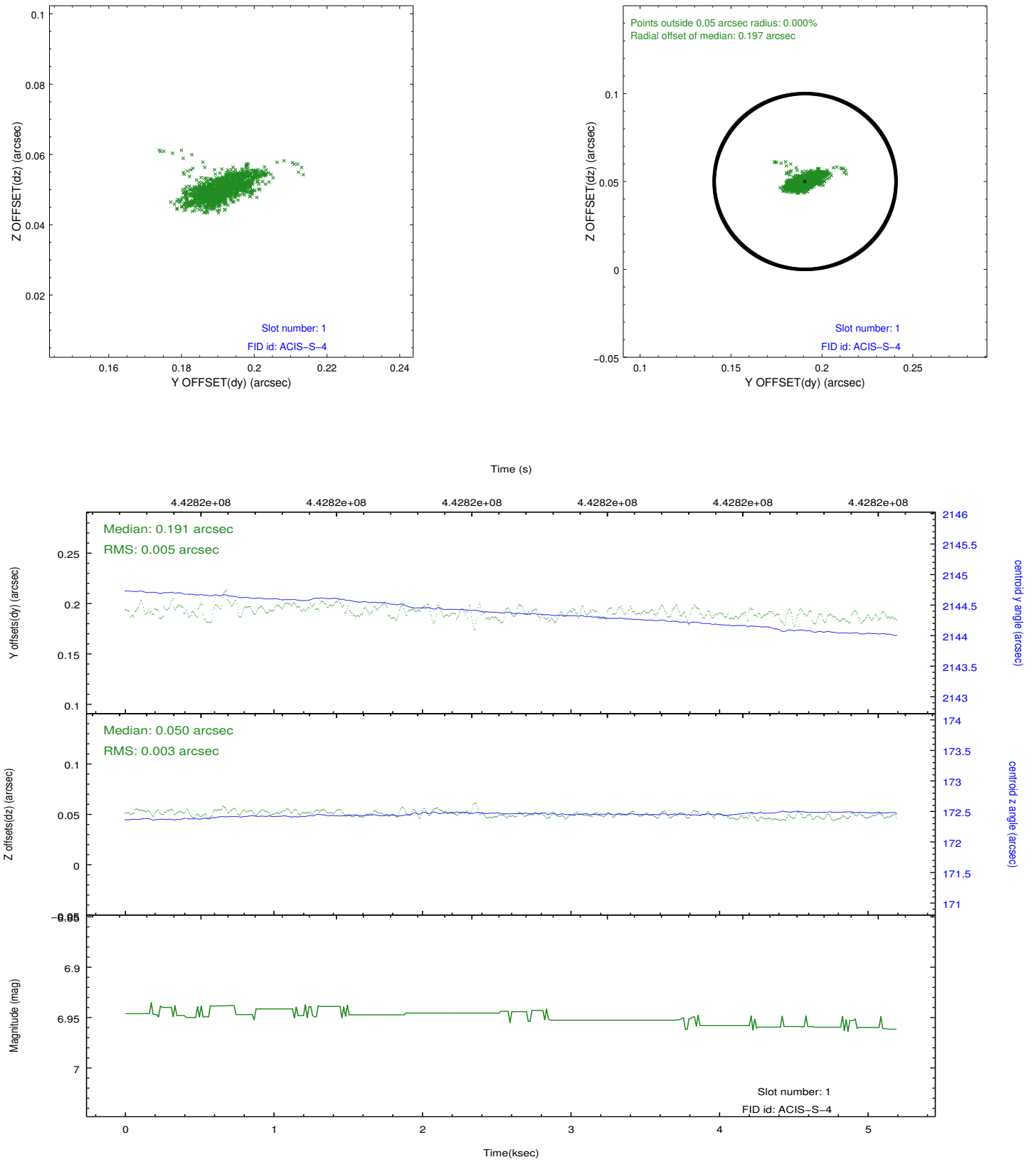


2.5 FID Slots

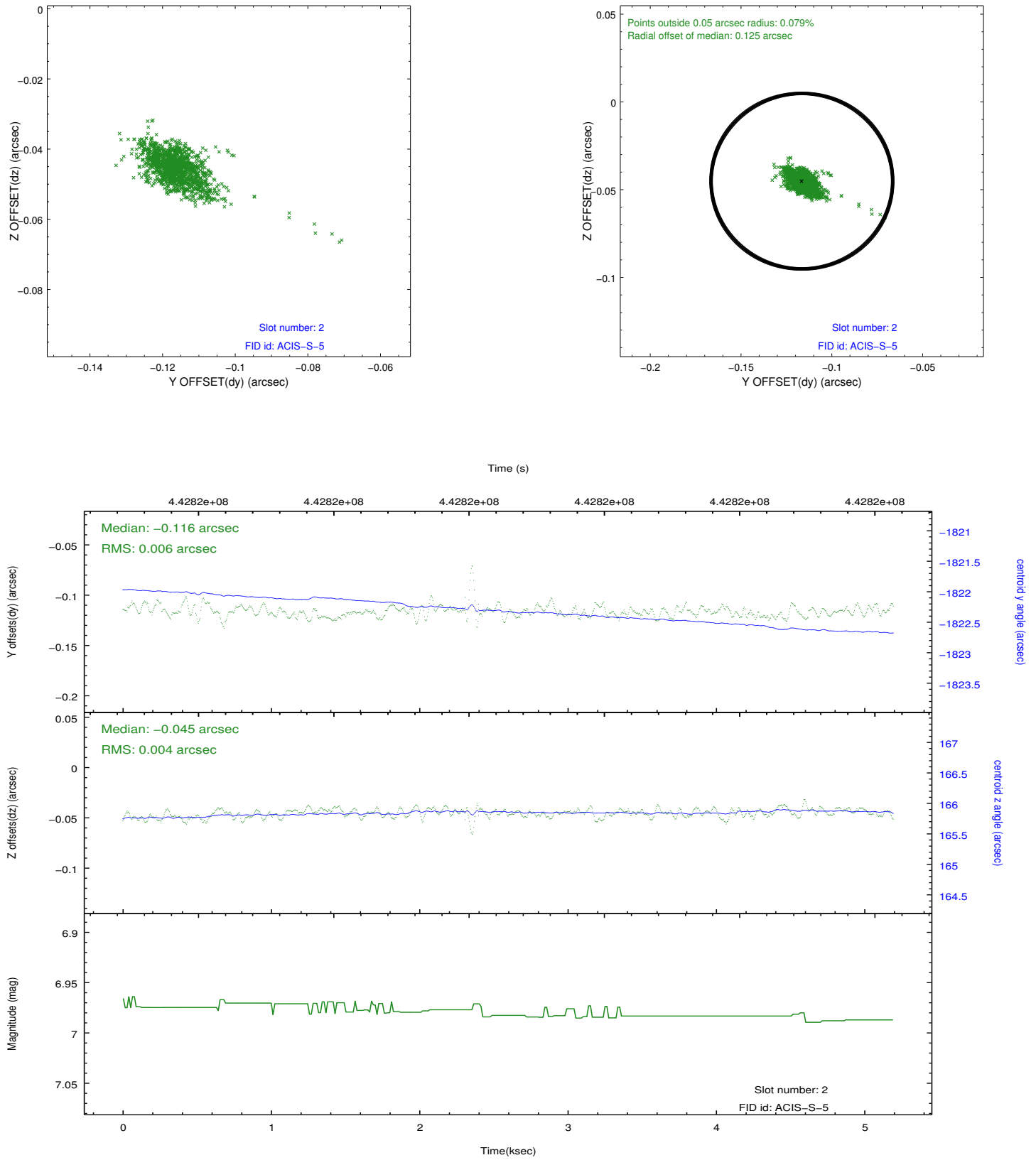
2.5.1 Slot 0



2.5.2 Slot 1



2.5.3 Slot 2



A Summary

A.1 Status

V&V Scientist	Jen Lauer
V&V Date (YYYY-MM-DD)	2012.01.13
V&V Edition	1
V&V Disposition and Status	OK
V&V Charge Time	5.0406000387669

A.2 Comments