

V&V Reference Report

L2 ASCDS Version : 8.4.3

Observation 13951 - L2 Version 2
Chandra X-Ray Center

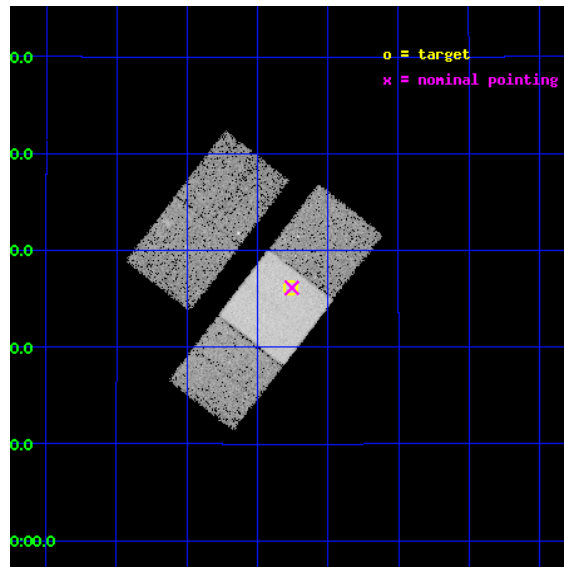
L2 Processing Date : Apr 4 2012

Contents

1	Front	2
2	OBI	3
2.1	OBI	3
2.1.1	Images	3
2.1.2	Bias	3
2.1.3	Parameters	4
2.1.4	Events	4
2.2	Compared Parameters	5
2.3	Aspect	6
2.4	Star Slots	9
2.4.1	Slot 3	9
2.4.2	Slot 5	10
2.4.3	Slot 6	11
2.4.4	Slot 7	12
2.5	FID Slots	13
2.5.1	Slot 0	13
2.5.2	Slot 1	14
2.5.3	Slot 2	15
A	Summary	16
A.1	Status	16
A.2	Comments	16

1 Front

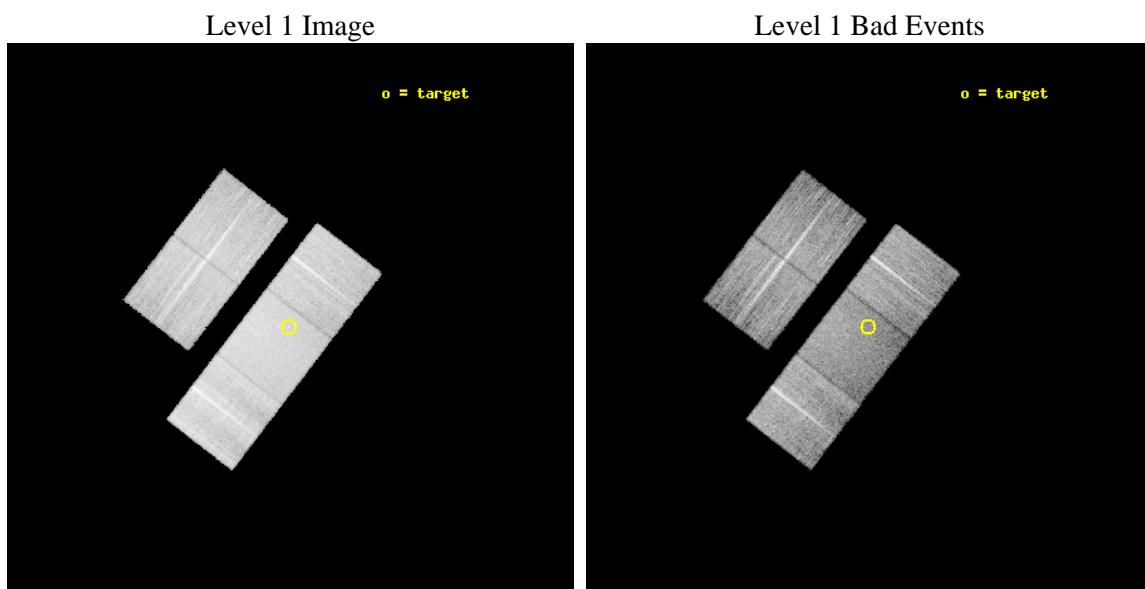
seq_num	702673	Sequence number
obs_id	13951	Observation id
title	Identifying Analogs of NGC 6240: Galaxies with Dual Supermassive Black Holes	Proposal title
observer	Dr. Julia Comerford	Principal investigator
object	SDSS J135646.11+102609.1	Source name
dtcycle	0	
cycle	P	events from which exps? Prim/Second/Both
ra_targ	209.192083	Observer's specified target RA [deg]
dec_targ	10.435861	Observer's specified target Dec [deg]
ra_nom	209.18900491377	Nominal RA [deg]
dec_nom	10.435568671714	Nominal Dec [deg]
roll_nom	127.6736741923	Nominal Roll [deg]
revision	2	Processing version of data
ontime	20066.300154328	Sum of GTIs [s]
livetime	19804.119170217	Livetime [s]
ontime2	20066.300154328	Sum of GTIs [s]
ontime3	20066.300154328	Sum of GTIs [s]
ontime6	20063.159173906	Sum of GTIs [s]
ontime7	20066.300154328	Sum of GTIs [s]
ontime8	20063.159183979	Sum of GTIs [s]
l2events	115832	Number of level 2 events



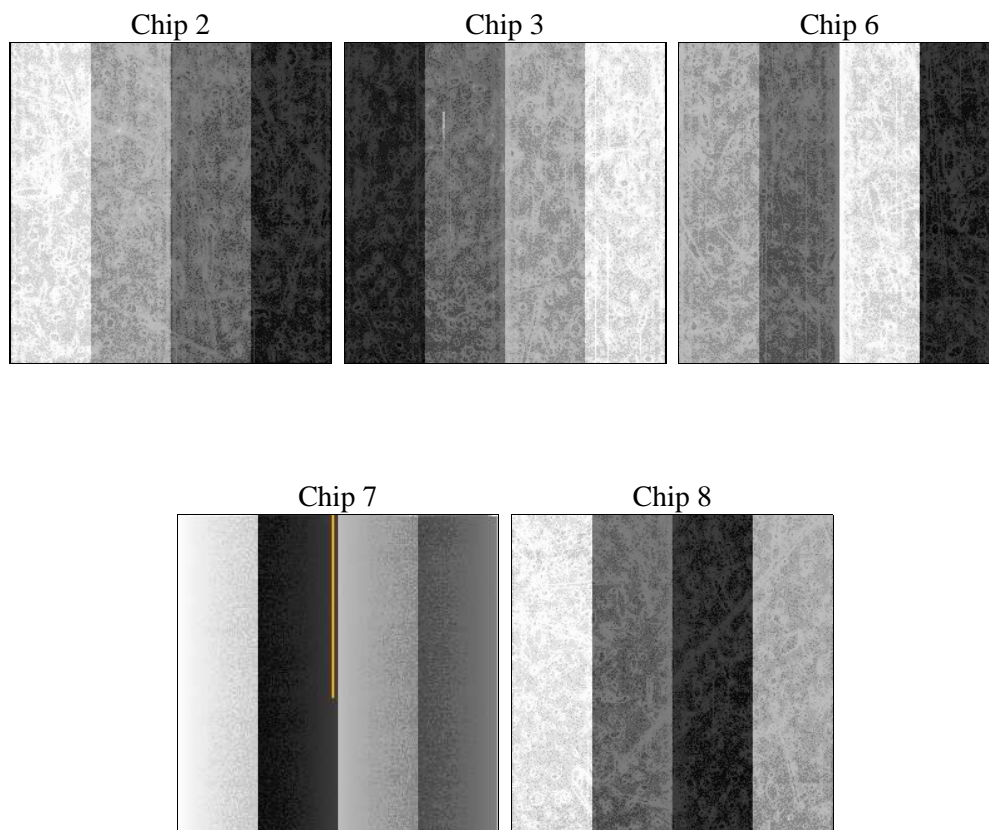
2 OBI

2.1 OBI

2.1.1 Images



2.1.2 Bias



2.1.3 Parameters

obi_num	1	Obi number	sched_exp_time	20000.380000	[s] Scheduled observation exposure time
ascdsver	8.4.3	Processing system revision	ontime	20066.300154328	Sum of GTIs [s]
caldsver	4.4.9	 	ontime2	20066.300154328	Sum of GTIs [s]
date	2012-04-04T17:42:59	Date and time of file creation	ontime3	20066.300154328	Sum of GTIs [s]
revision	2	Processing version of data	ontime6	20063.159173906	Sum of GTIs [s]
			ontime7	20066.300154328	Sum of GTIs [s]
			ontime8	20063.159183979	Sum of GTIs [s]
			l1events	653263	Number of level 1 events

2.1.4 Events

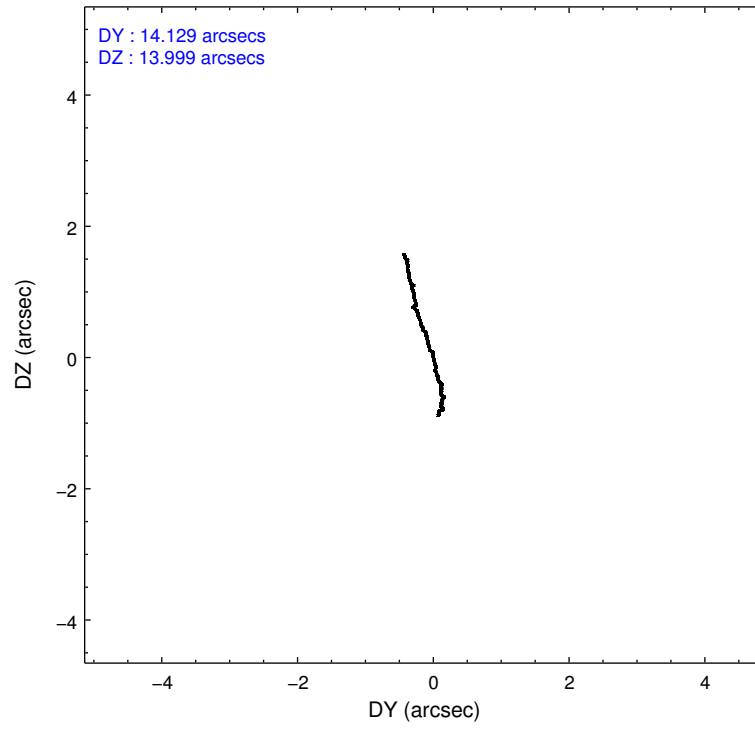
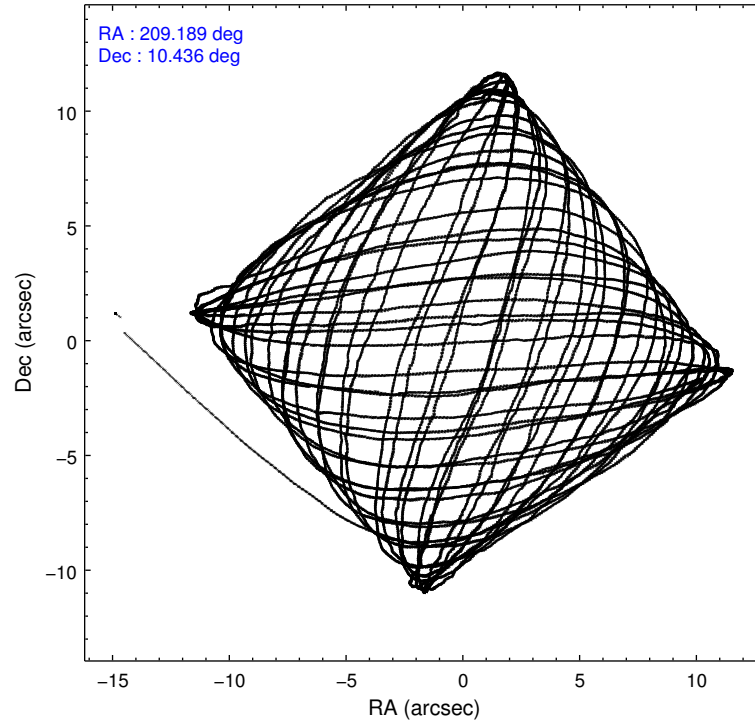
	ccd 2	ccd 3	ccd 6	ccd 7	ccd 8
level 1 events	109713	113343	120786	152228	157193
rejected events	96385	100585	106256	84305	113489
rejected %	87%	88%	87%	55%	72%

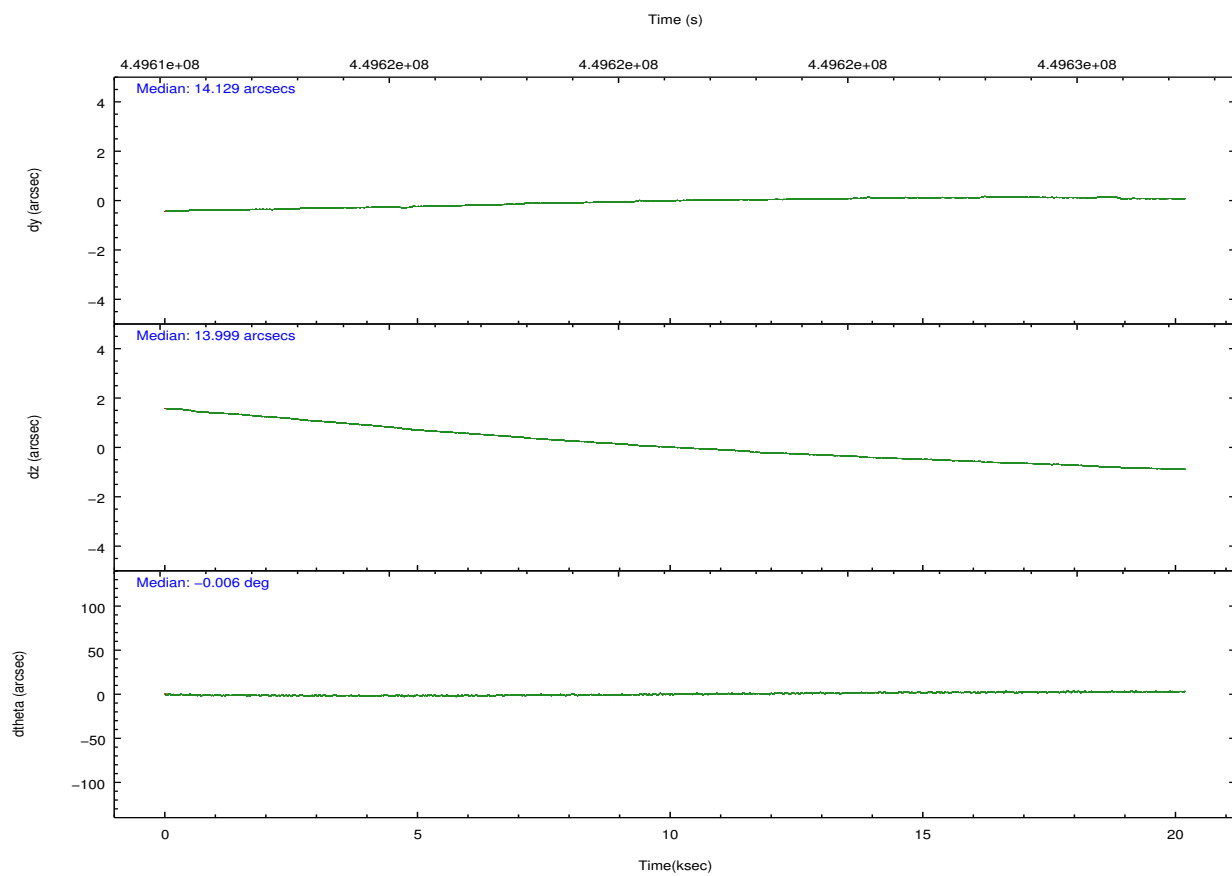
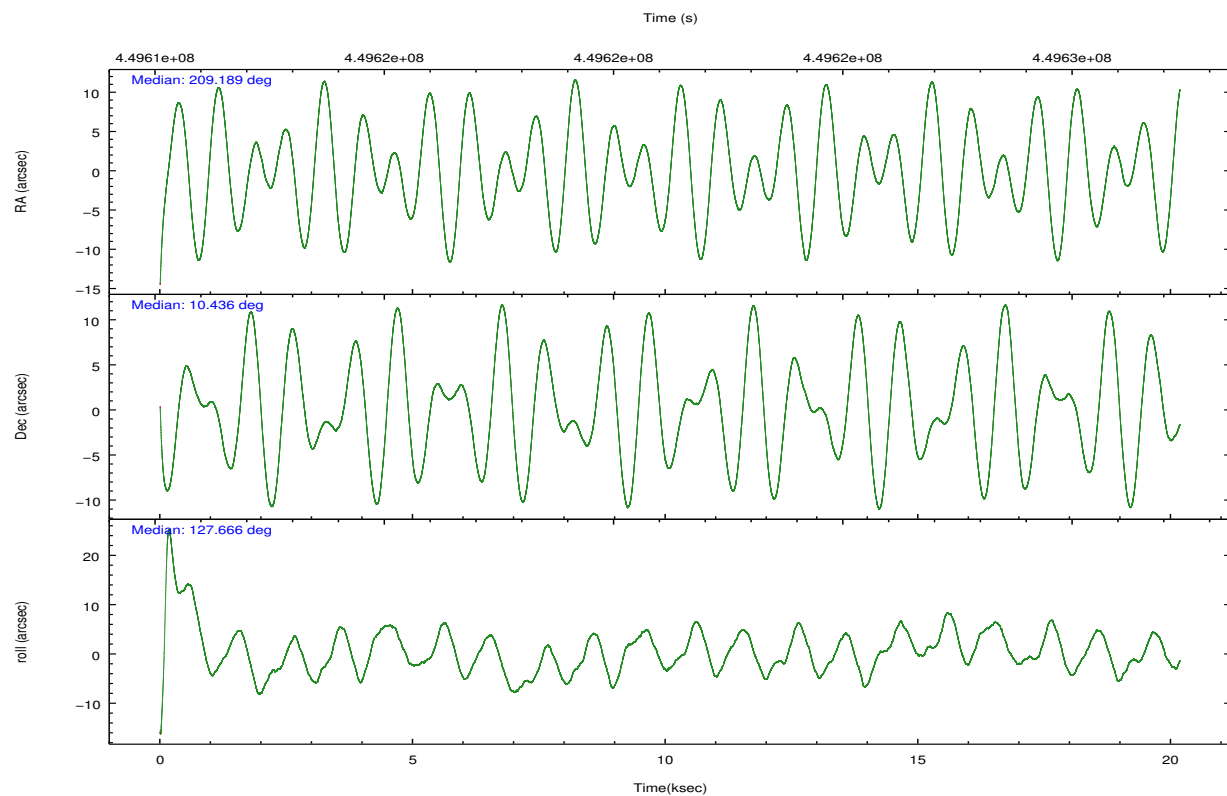
	ccd 2	ccd 3	ccd 6	ccd 7	ccd 8
grade 0 events	5066	4674	5203	6523	13097
	4%	4%	4%	4%	8%
grade 1 events	68	79	52	182	137
	0%	0%	0%	0%	0%
grade 2 events	3125	2789	3338	13867	9736
	2%	2%	2%	9%	6%
grade 3 events	1368	1378	1408	5903	5036
	1%	1%	1%	3%	3%
grade 4 events	1283	1372	1468	5989	4684
	1%	1%	1%	3%	2%
grade 5 events	4842	5821	5793	15881	8378
	4%	5%	4%	10%	5%
grade 6 events	2486	2548	3114	35645	11151
	2%	2%	2%	23%	7%
grade 7 events	91475	94682	100410	68238	104974
	83%	83%	83%	44%	66%

2.2 Compared Parameters

Parameter	Planned	Actual	Parameter	Planned	Actual
Instrument	ACIS	ACIS	Obspar format version number	7	7
Detector	ACIS-23678	ACIS-23678	Obspar file type	PREDICTED	ACTUAL
Grating	NONE	NONE	Obspar update status	NONE	UPDATED
Data mode	FAINT	FAINT	CCD I0 on	N	N
Observation mode	POINTING	POINTING	CCD I1 on	N	N
[deg] Pointing RA	209.214873	209.1890049137657	CCD I2 on	O2	Y
[deg] Pointing Dec	10.425543	10.43556867171399	CCD I3 on	O1	Y
[deg] Pointing Roll	127.512392	127.6736741923017	CCD S0 on	N	N
[mm] SIM focus pos	-0.684267	-0.6828225247311905	CCD S1 on	N	N
[mm] SIM defocus	0	0.001444936568705701	CCD S2 on	Y	Y
[mm] SIM translation stage pos	-190.132523	-190.1400660498719	CCD S3 on	Y	Y
[mm] SIM translation stage offset	0	0.00754346686406393	CCD S4 on	O3	Y
[s] Observation start time (MET)	449611323.184000	449610283.98621	CCD S5 on	N	N
Observation start date	2012-03-31T20:00:57	2012-03-31T19:44:43	Number of optional ACIS chips dropped	0	0
[s] Observation end time (MET)	449631323.184000	449631549.14984	On-chip summing requested	N	N
Observation end date	2012-04-01T01:34:17	2012-04-01T01:39:09	Subarray requested	NONE	NONE
Read mode	TIMED	TIMED	Alternating exposures requested	N	N
			[s] Primary exposure time	0.000000	3.1

2.3 Aspect



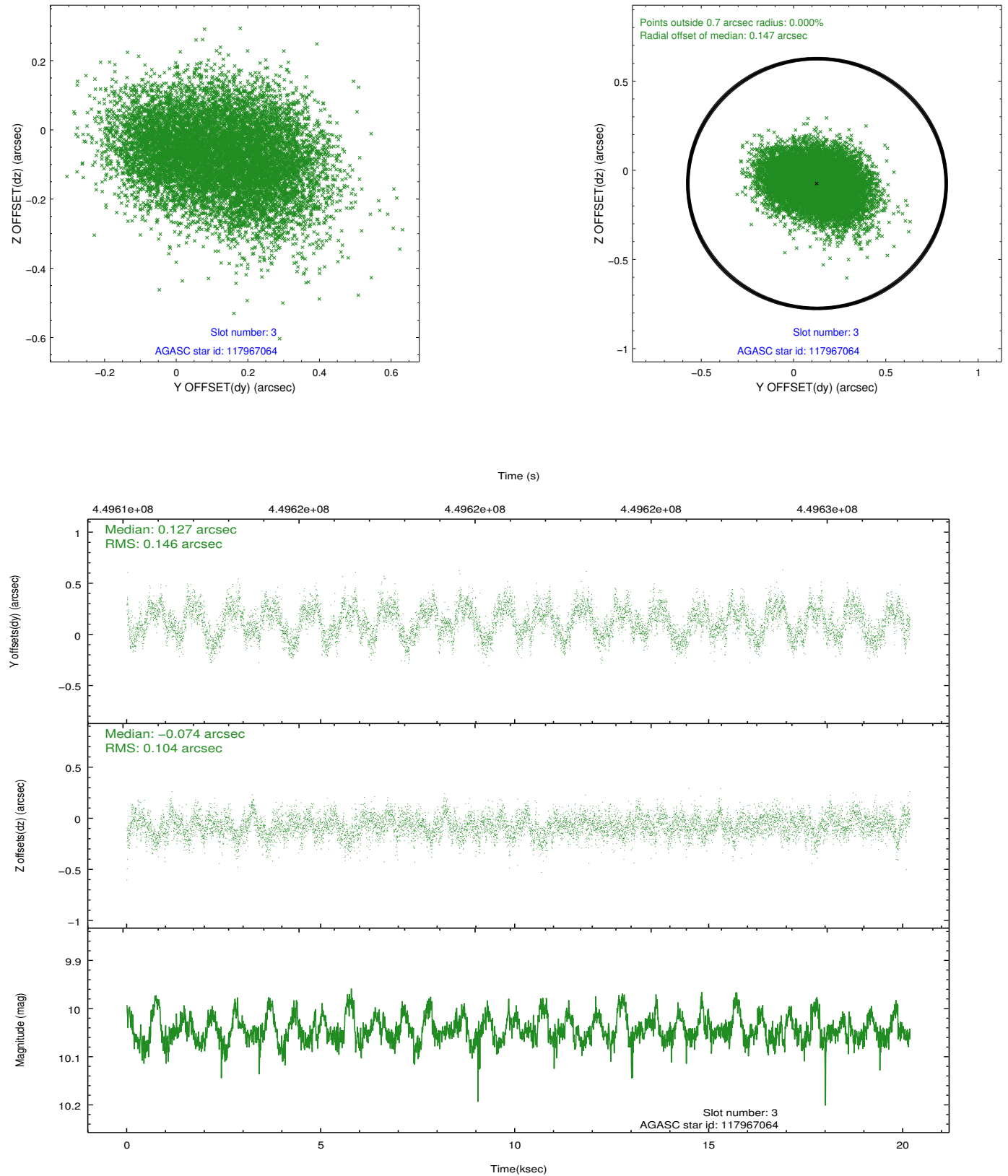


Slot Statistics

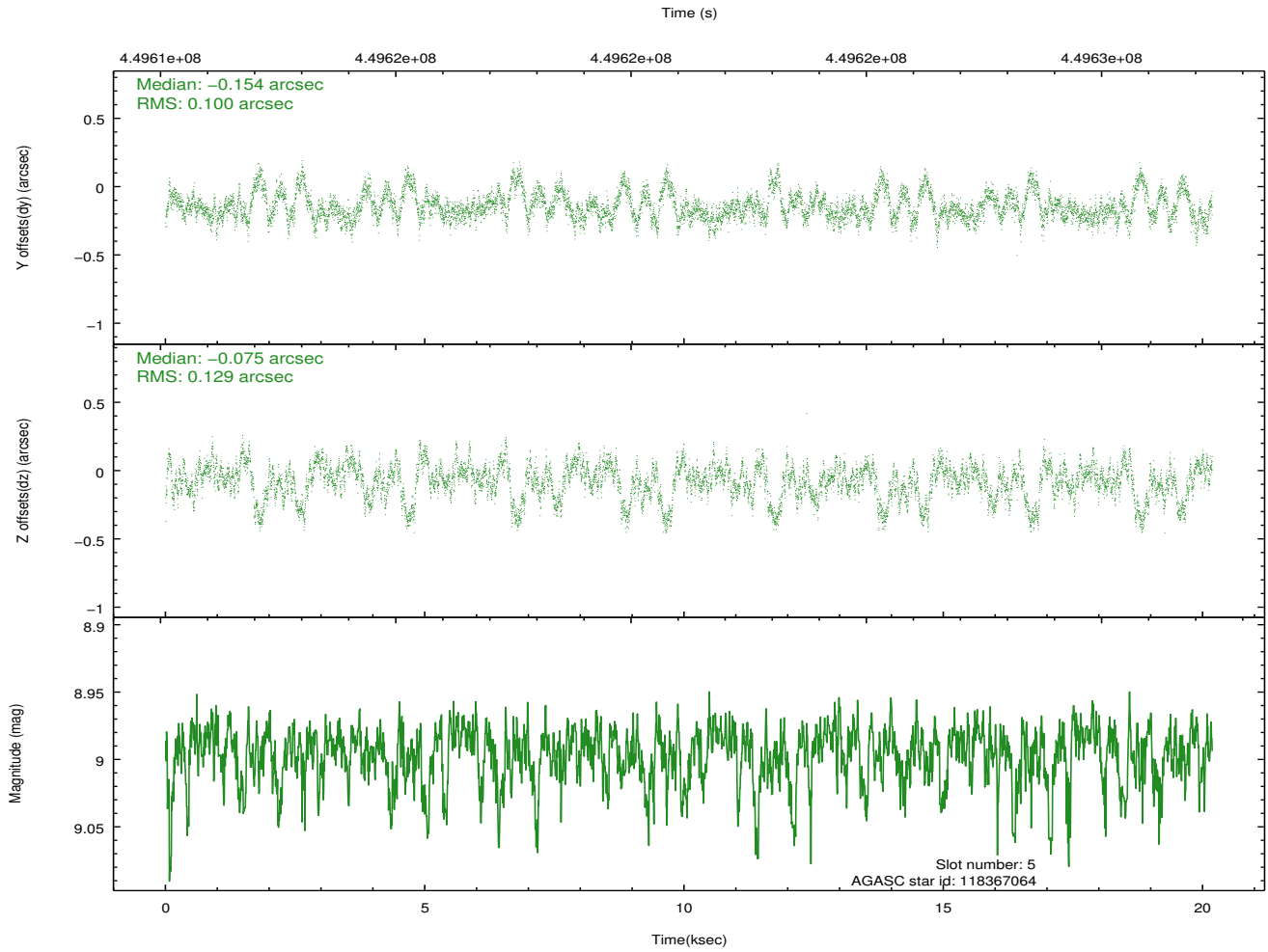
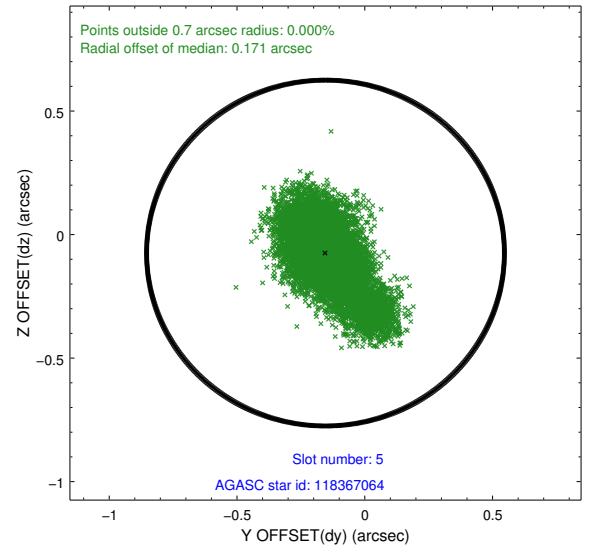
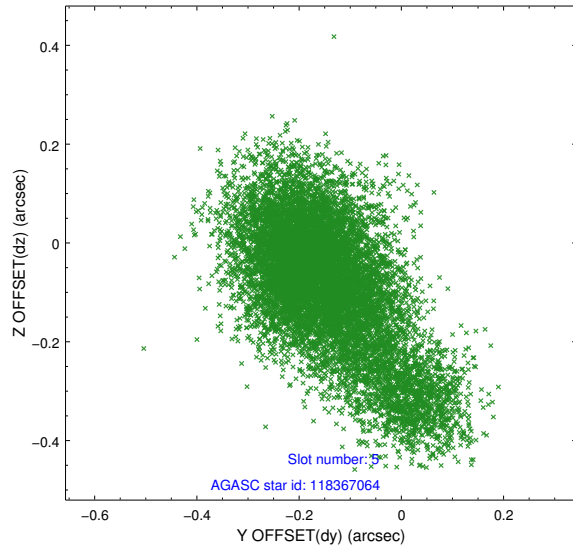
slot	status	id	mag	n_pts	med_dy	med_dz	dr1	dr2	ra	dec	mean_y	mean_z
0	FID	ACIS-S-1	7.00	4923	0.074	-0.022	0.019	0.048	0.000000	0.000000	929.12	-1731.14
1	FID	ACIS-S-5	7.04	4923	-0.155	0.045	0.011	0.015	0.000000	0.000000	-1820.02	166.28
2	FID	ACIS-S-6	7.13	4923	0.060	-0.019	0.024	0.062	0.000000	0.000000	394.44	810.41
3	GUIDE	117967064	10.05	9833	0.127	-0.074	0.194	0.301	209.118667	9.673157	-1941.13	1919.61
4	OMITTED		0.00	0	0.000	0.000	0.000	0.000	0.000000	0.000000	0.00	0.00
5	GUIDE	118367064	8.99	9837	-0.154	-0.075	0.160	0.318	208.544371	10.247980	937.70	2271.98
6	GUIDE	118494392	10.41	9832	0.154	0.072	0.206	0.329	209.466899	10.298749	-905.66	-430.03
7	GUIDE	118494824	10.31	9829	-0.139	0.083	0.227	0.379	209.426142	11.151900	1620.54	-2184.01

2.4 Star Slots

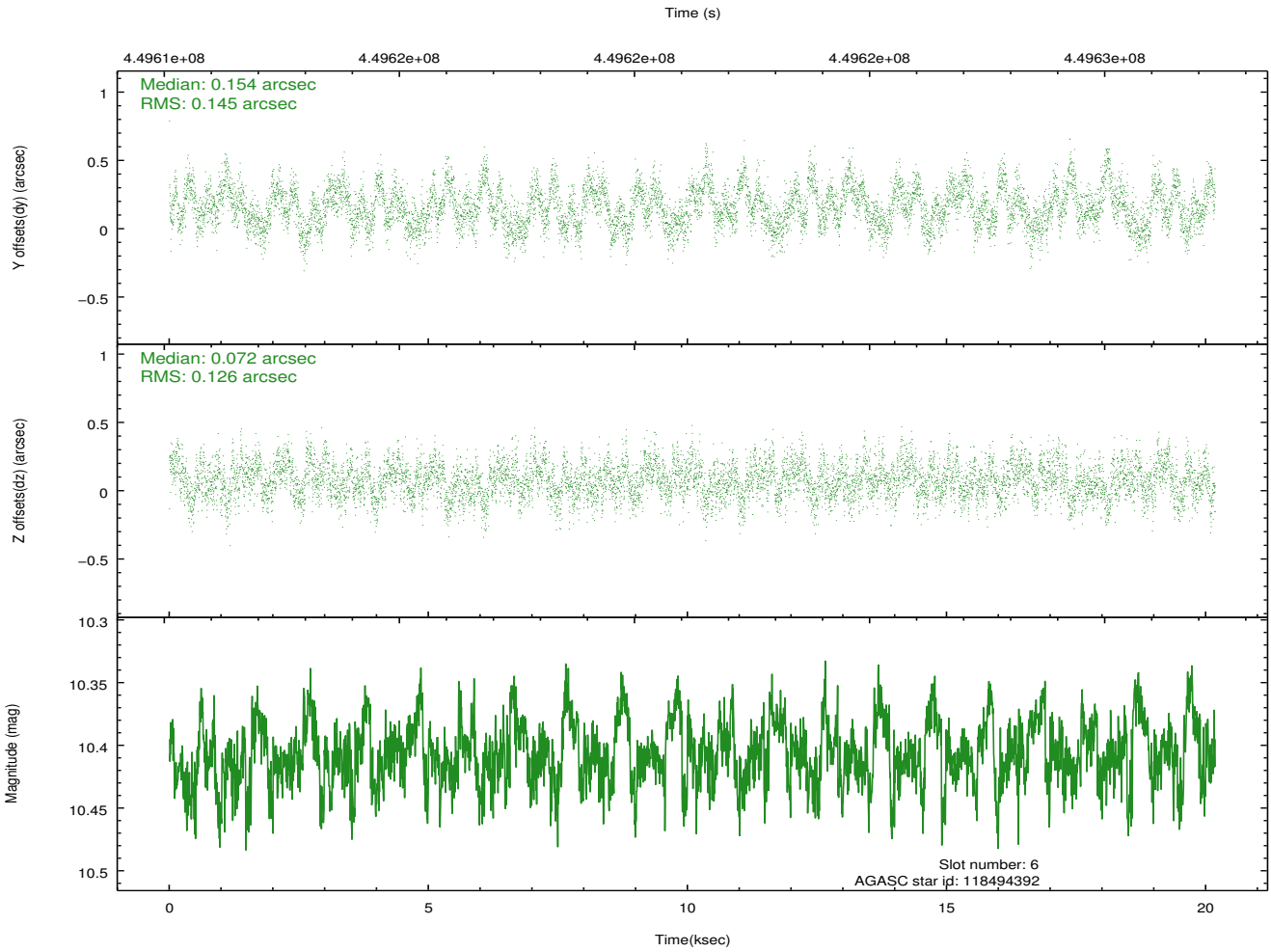
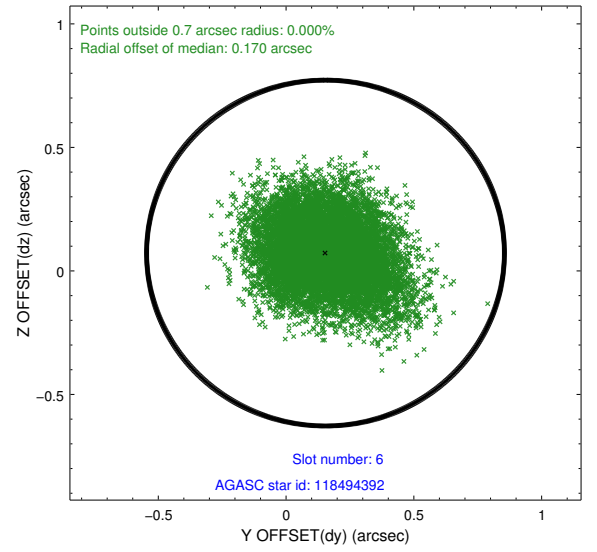
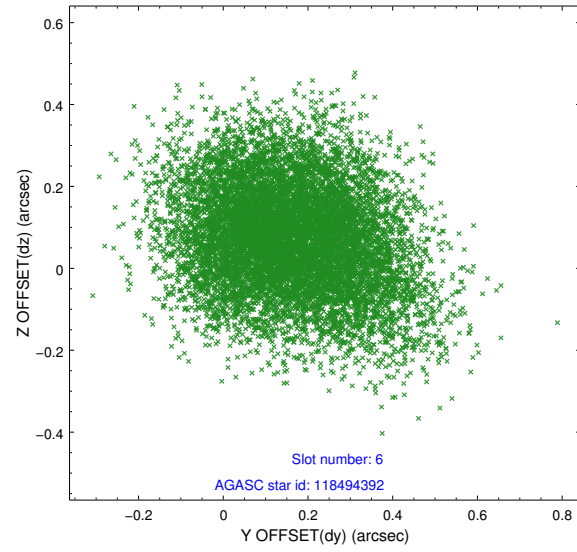
2.4.1 Slot 3



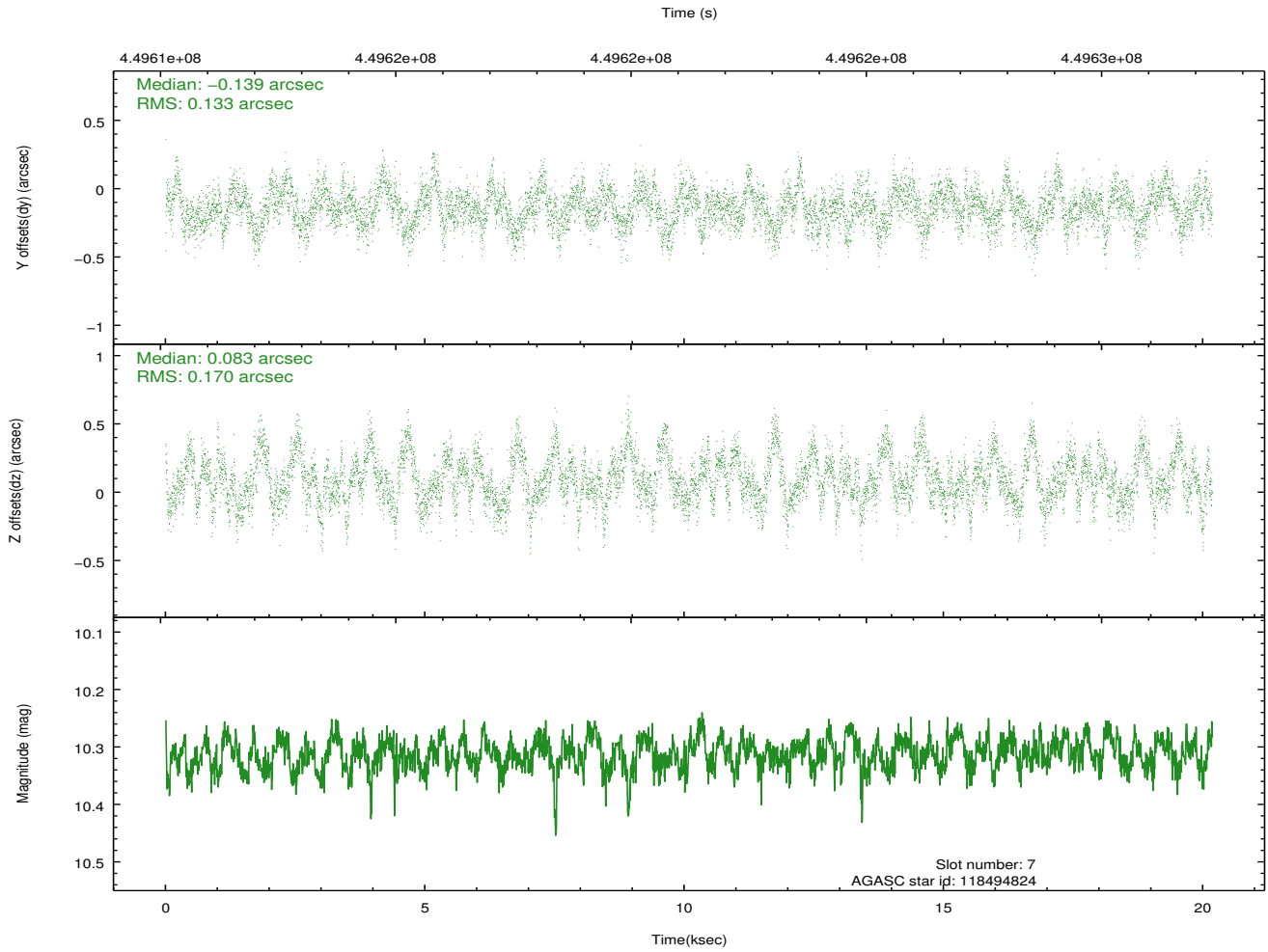
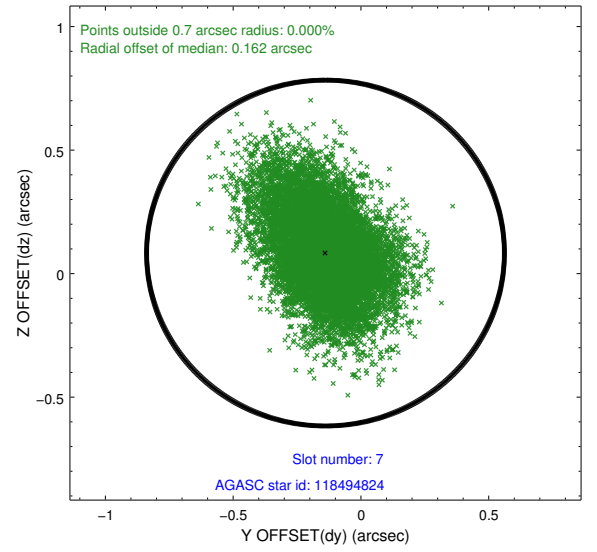
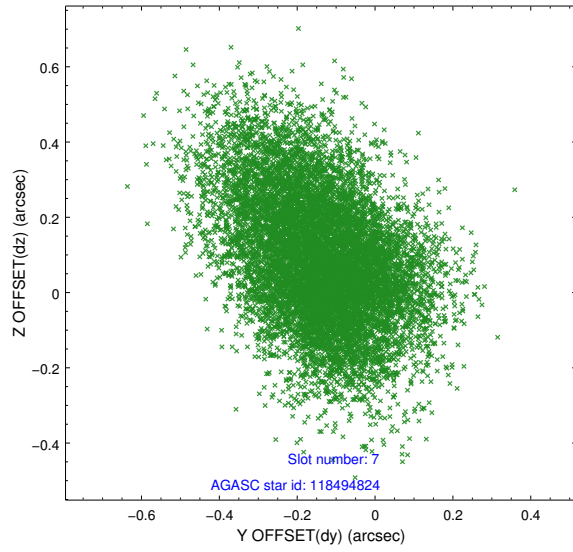
2.4.2 Slot 5



2.4.3 Slot 6

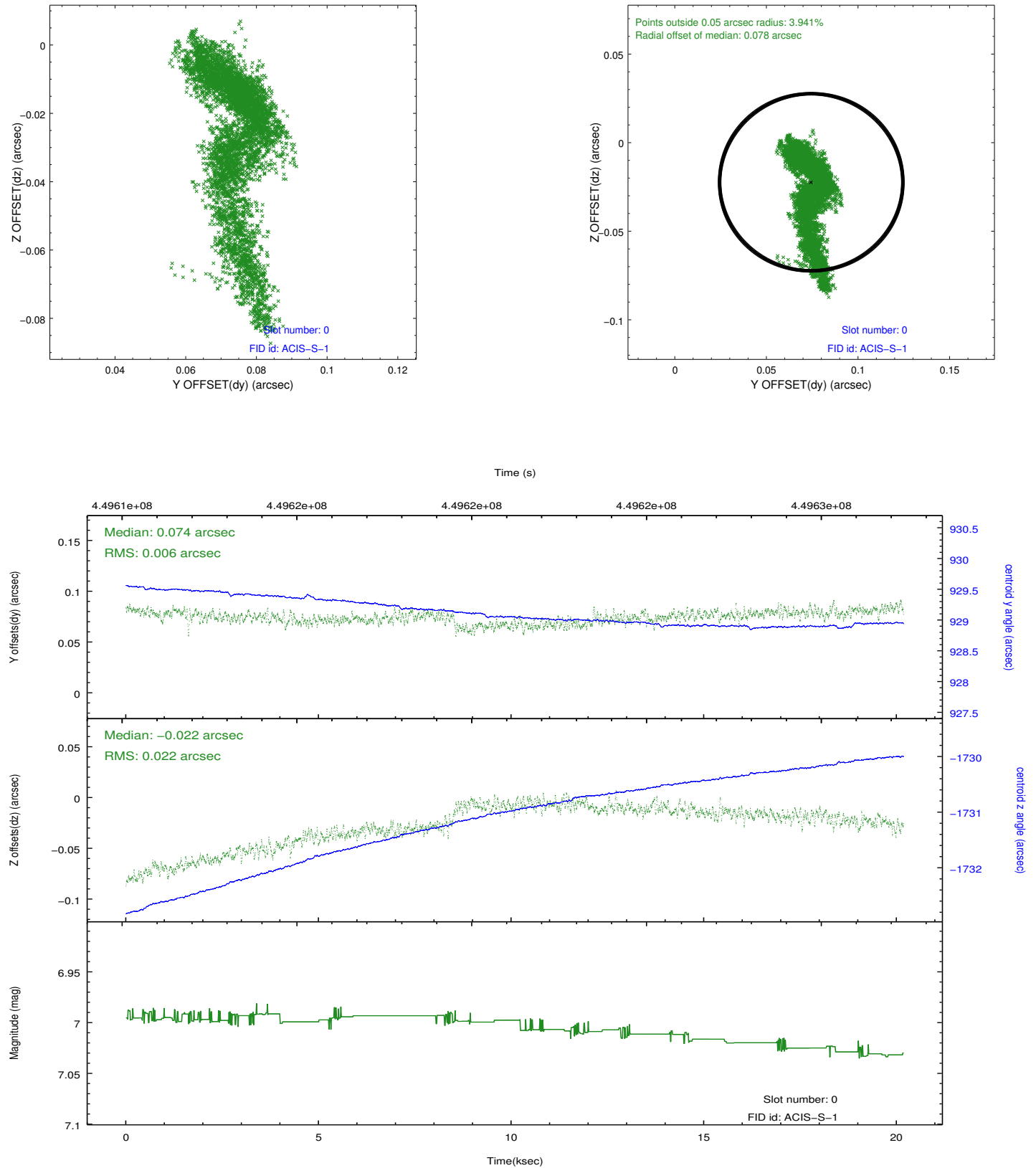


2.4.4 Slot 7

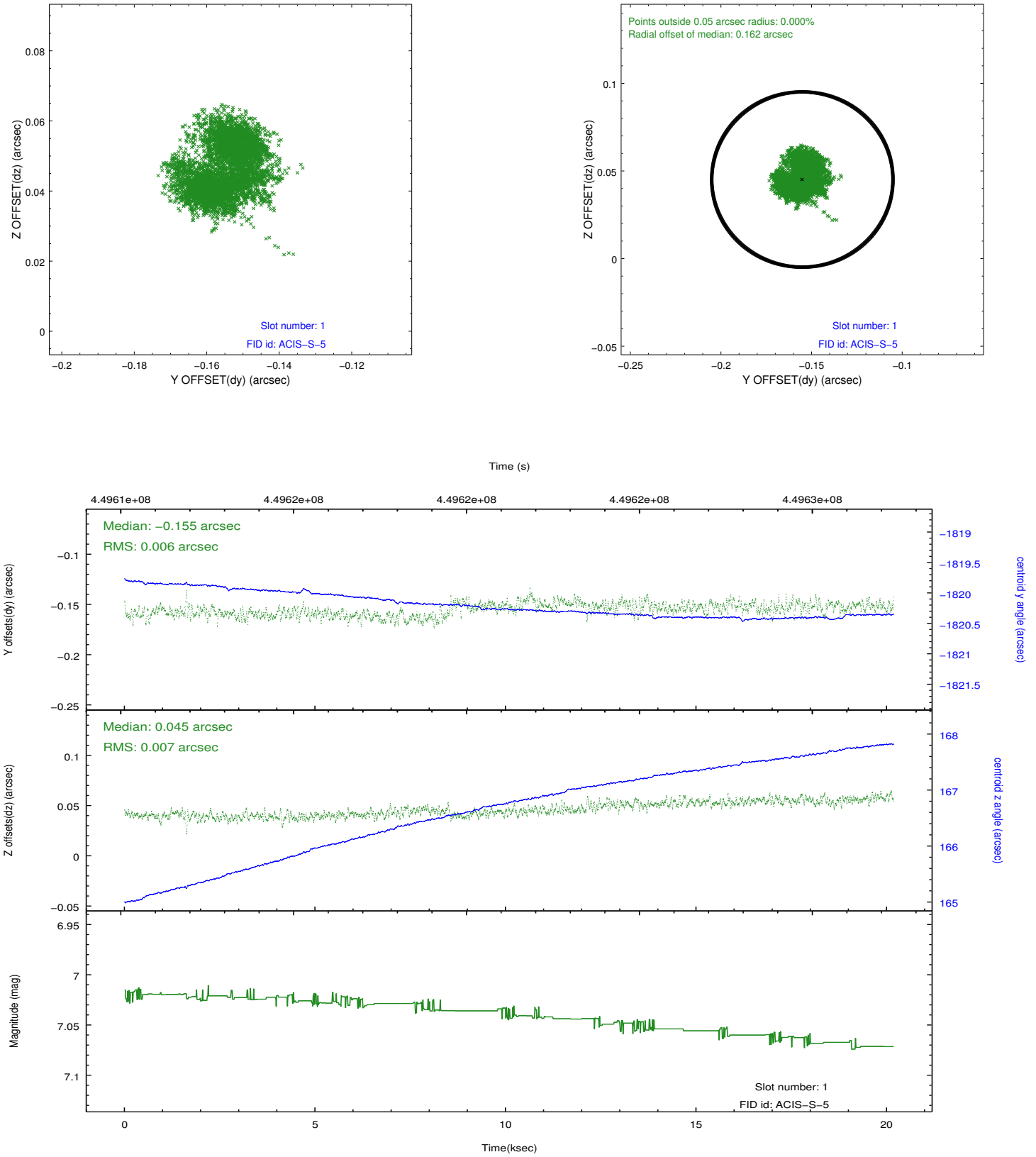


2.5 FID Slots

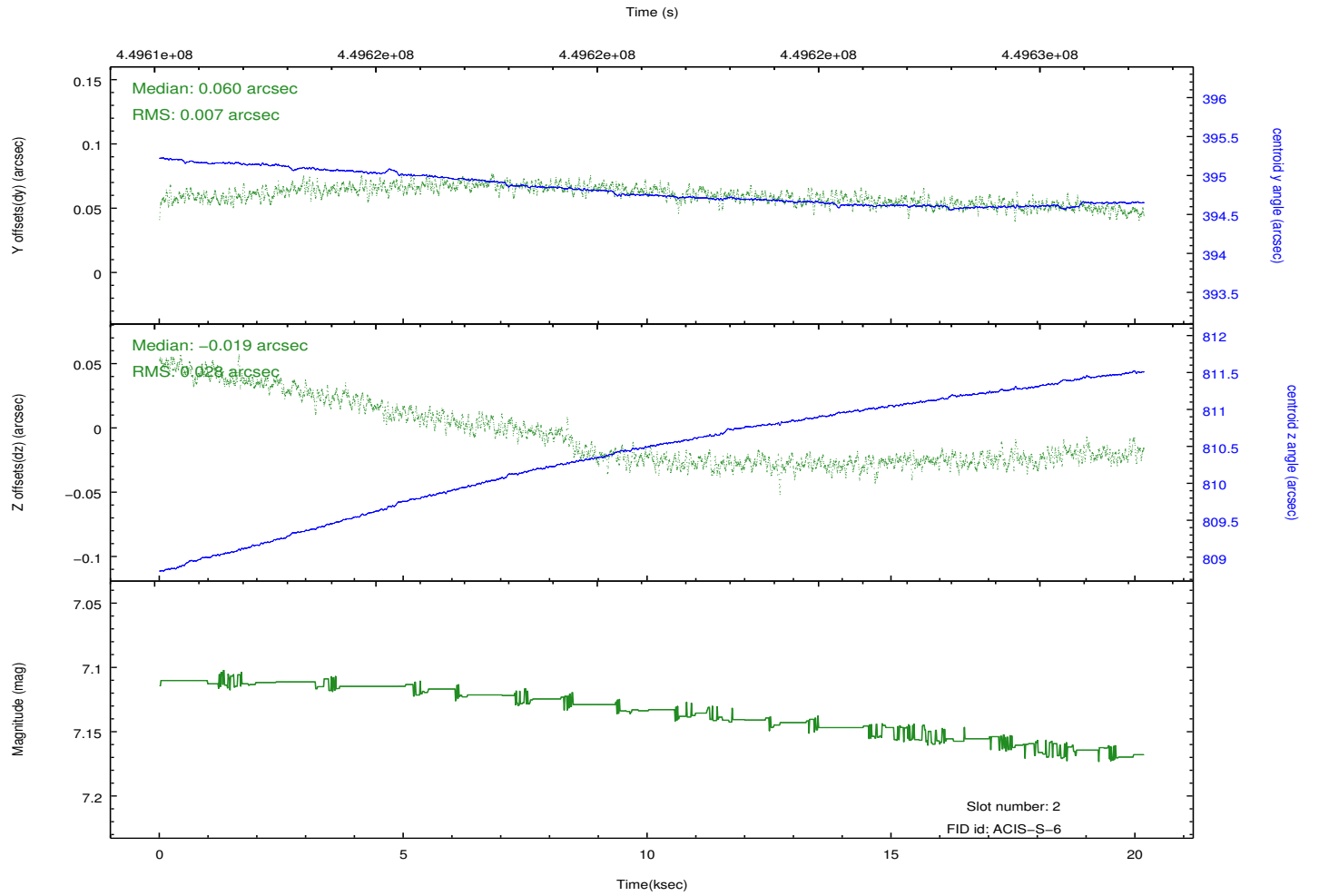
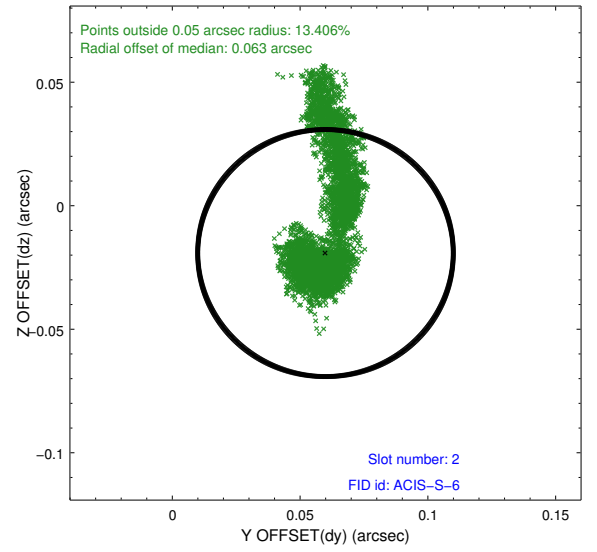
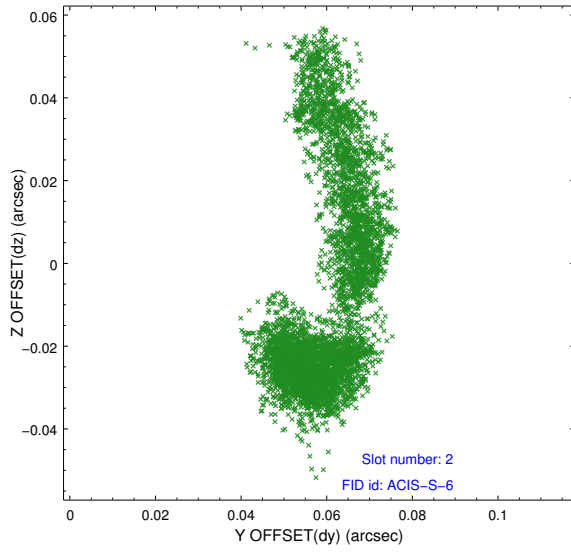
2.5.1 Slot 0



2.5.2 Slot 1



2.5.3 Slot 2



A Summary

A.1 Status

V&V Scientist	Joy Nichols
V&V Date (YYYY-MM-DD)	2012.04.05
V&V Edition	1
V&V Disposition and Status	OK
V&V Charge Time	20.066300154328

A.2 Comments

The guide star in slot 4 was removed from the aspect solution due to poor data quality. The aspect solution is improved by the removal of this guide star from the solution.