

V&V Reference Report

L2 ASCDS Version : 8.4.3

Observation 13319 - L2 Version 1
Chandra X-Ray Center

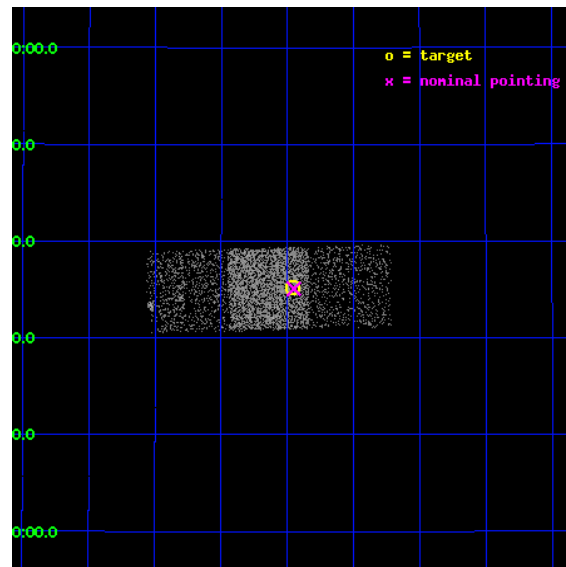
L2 Processing Date : Mar 27 2012

Contents

1	Front	2
2	OBI	3
2.1	OBI	3
2.1.1	Images	3
2.1.2	Bias	3
2.1.3	Parameters	4
2.1.4	Events	4
2.2	Compared Parameters	5
2.3	Aspect	6
2.4	Star Slots	9
2.4.1	Slot 3	9
2.4.2	Slot 4	10
2.4.3	Slot 5	11
2.4.4	Slot 6	12
2.4.5	Slot 7	13
2.5	FID Slots	14
2.5.1	Slot 0	14
2.5.2	Slot 1	15
2.5.3	Slot 2	16
A	Summary	17
A.1	Status	17
A.2	Comments	17

1 Front

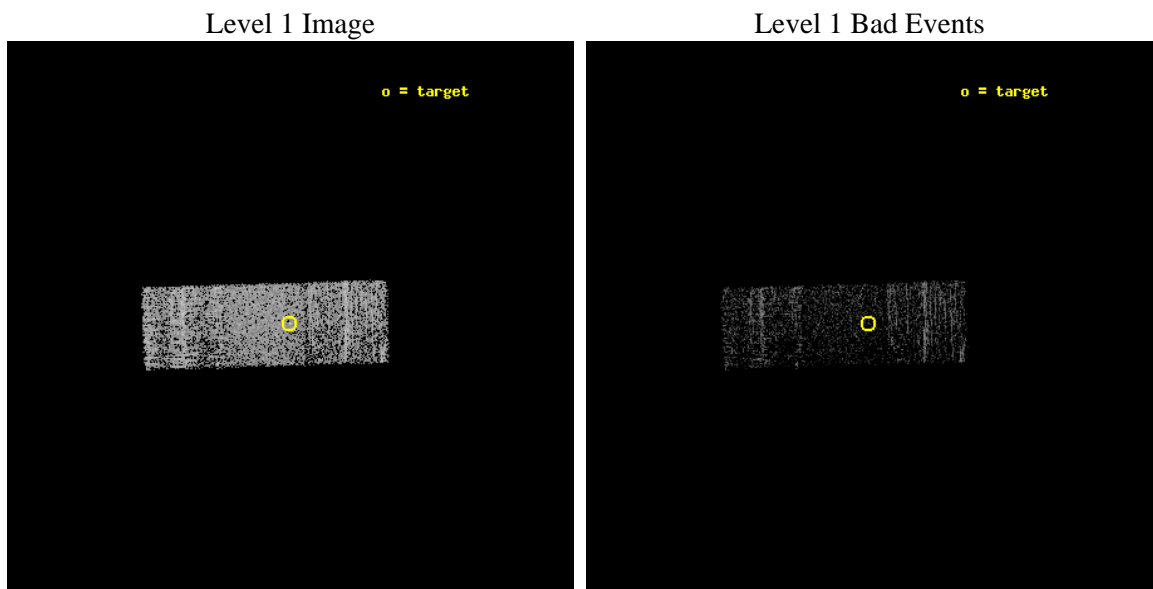
seq_num	702526	Sequence number
obs_id	13319	Observation id
title	A Large, Economical Snapshot Survey of the Most-Luminous Quasars from the Sloan Digital Sky Survey	Proposal title
observer	Professor Gordon Garmire	Principal investigator
object	SDSS J1225+2235	Source name
dtcycle	0	
cycle	P	events from which exps? Prim/Second/Both
ra_targ	186.364167	Observer's specified target RA [deg]
dec_targ	22.586917	Observer's specified target Dec [deg]
ra_nom	186.36267024283	Nominal RA [deg]
dec_nom	22.584599776273	Nominal Dec [deg]
roll_nom	178.14851671687	Nominal Roll [deg]
revision	1	Processing version of data
ontime	1577.9000121355	Sum of GTIs [s]
livetime	1557.2835868439	Livetime [s]
ontime6	1577.9000121355	Sum of GTIs [s]
ontime7	1577.9000121355	Sum of GTIs [s]
ontime8	1577.9000121355	Sum of GTIs [s]
l2events	6513	Number of level 2 events



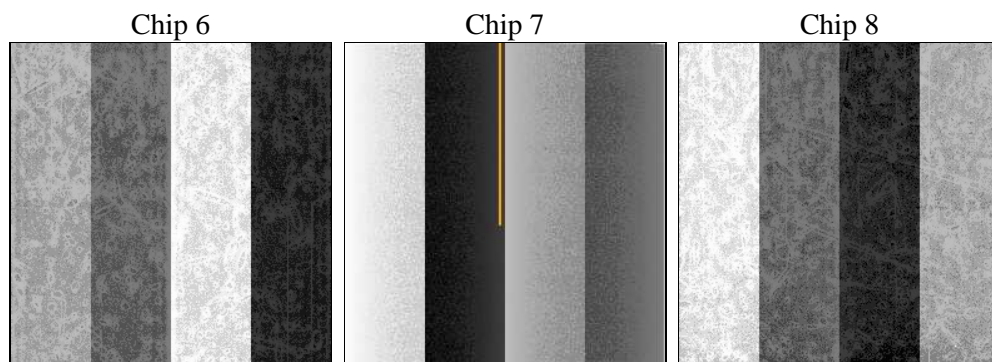
2 OBI

2.1 OBI

2.1.1 Images



2.1.2 Bias



2.1.3 Parameters

obi_num	1	Obi number	sched_exp_time	1500.000000	[s] Scheduled observation exposure time
ascdsver	8.4.3	Processing system revision	ontime	1577.9000121355	Sum of GTIs [s]
caldsver	4.4.8	 	ontime6	1577.9000121355	Sum of GTIs [s]
date	2012-03-27T04:19:34	Date and time of file creation	ontime7	1577.9000121355	Sum of GTIs [s]
revision	1	Processing version of data	ontime8	1577.9000121355	Sum of GTIs [s]
			l1events	29589	Number of level 1 events

2.1.4 Events

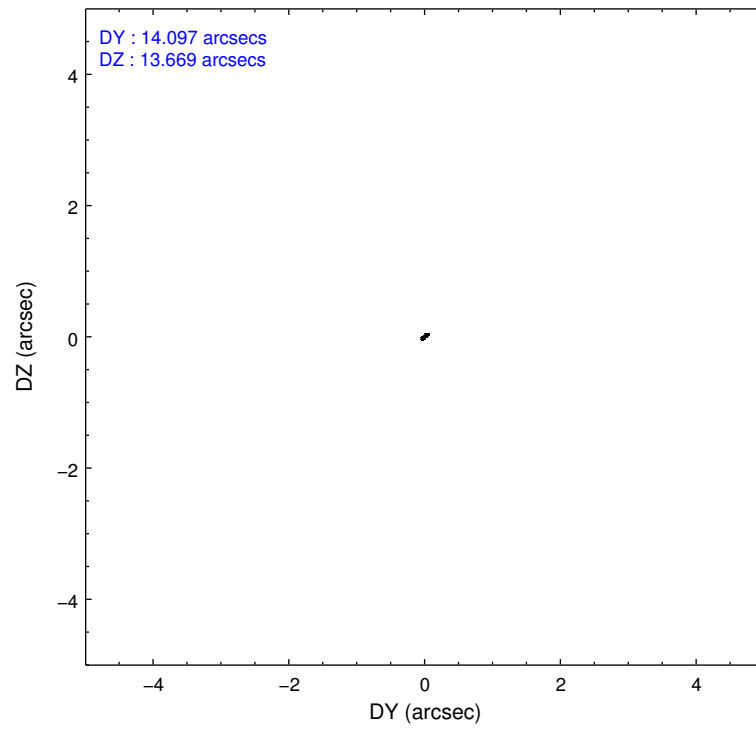
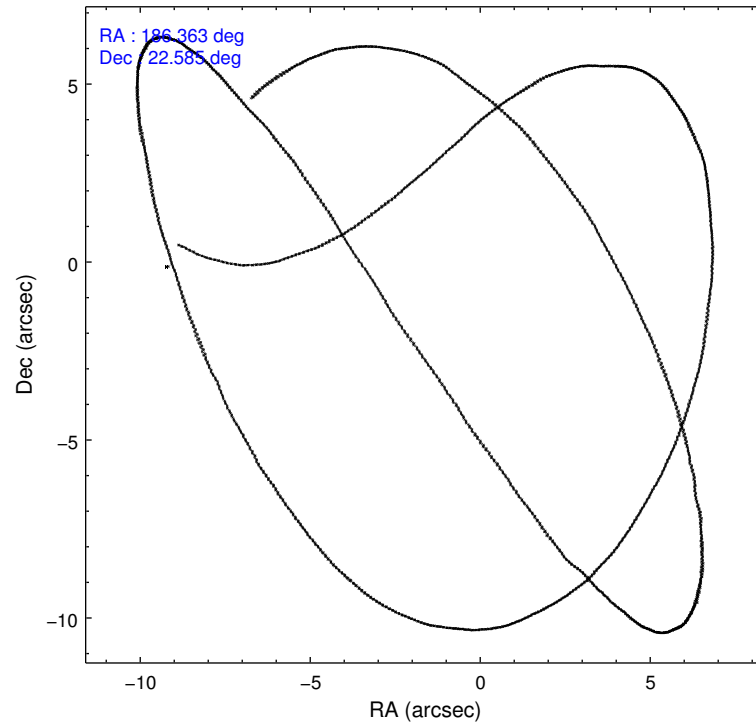
	ccd 6	ccd 7	ccd 8
level 1 events	9265	9632	10692
rejected events	8297	4953	7556
rejected %	89%	51%	70%

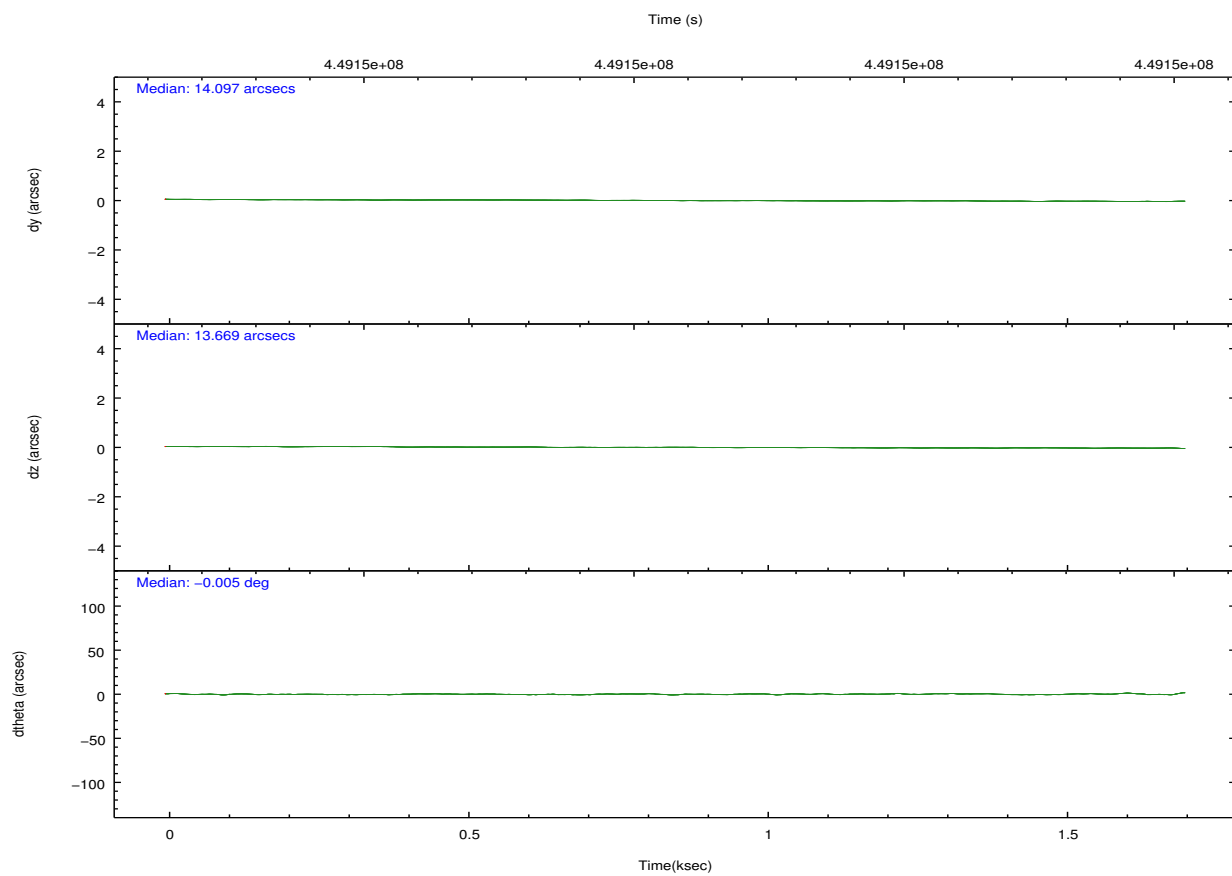
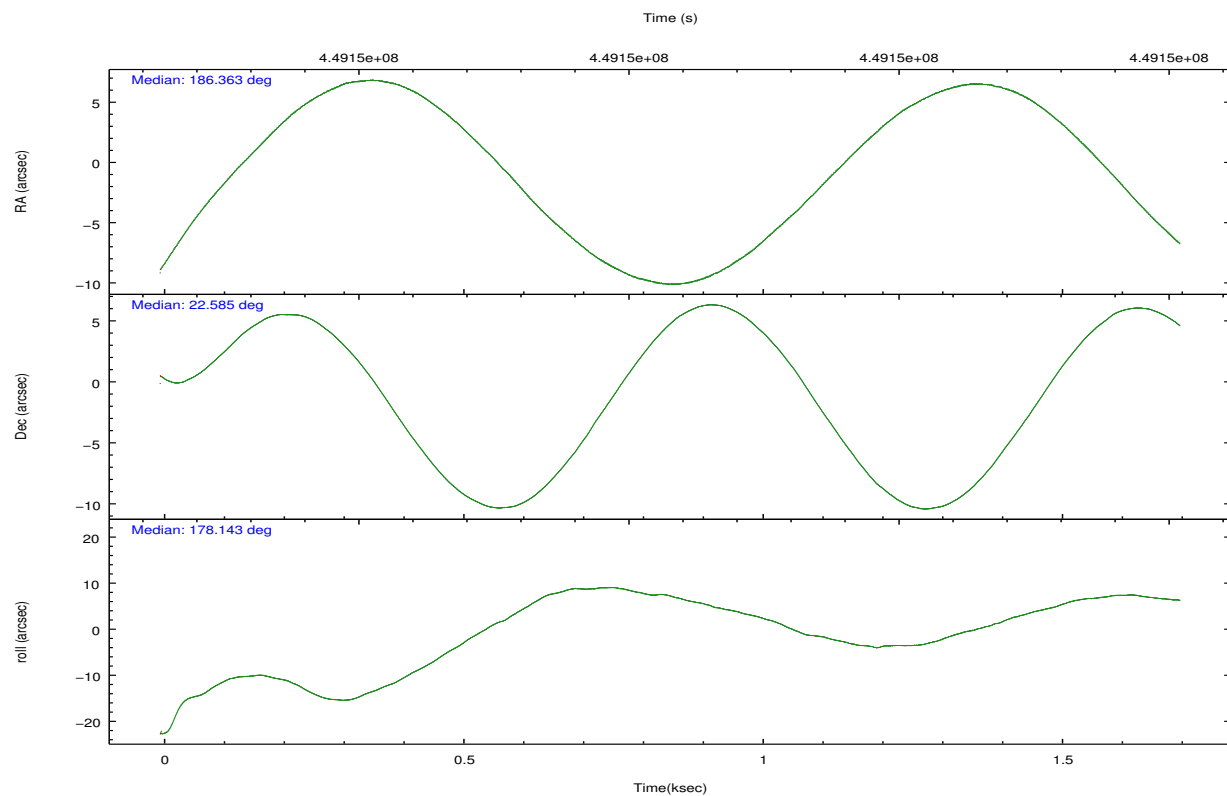
	ccd 6	ccd 7	ccd 8
grade 0 events	349	444	951
	3%	4%	8%
grade 1 events	9	10	12
	0%	0%	0%
grade 2 events	212	1003	727
	2%	10%	6%
grade 3 events	97	417	358
	1%	4%	3%
grade 4 events	104	400	328
	1%	4%	3%
grade 5 events	372	962	532
	4%	9%	4%
grade 6 events	209	2422	775
	2%	25%	7%
grade 7 events	7913	3974	7009
	85%	41%	65%

2.2 Compared Parameters

Parameter	Planned	Actual	Parameter	Planned	Actual
Instrument	ACIS	ACIS	Obspar format version number	7	7
Detector	ACIS-678	ACIS-678	Obspar file type	PREDICTED	ACTUAL
Grating	NONE	NONE	Obspar update status	NONE	UPDATED
Data mode	VFAINT	VFAINT	Number of optional ACIS chips dropped	0	0
Observation mode	POINTING	POINTING	On-chip summing requested	N	N
[deg] Pointing RA	186.388234	186.3626702428277	Subarray requested	NONE	NONE
[deg] Pointing Dec	22.597648	22.58459977627291	Alternating exposures requested	N	N
[deg] Pointing Roll	177.982168	178.1485167168712	[s] Primary exposure time	0.000000	3.1
[mm] SIM focus pos	-0.684267	-0.6828225247311905			
[mm] SIM defocus	0	0.001444936568705701			
[mm] SIM translation stage pos	-190.132523	-190.1425803651734			
[mm] SIM translation stage offset	0	0.01005778216563158			
[s] Observation start time (MET)	449149924.184000	449149098.02426			
Observation start date	2012-03-26T11:50:58	2012-03-26T11:38:18			
[s] Observation end time (MET)	449151424.184000	449151847.58691			
Observation end date	2012-03-26T12:15:58	2012-03-26T12:24:07			
Read mode	TIMED	TIMED			

2.3 Aspect



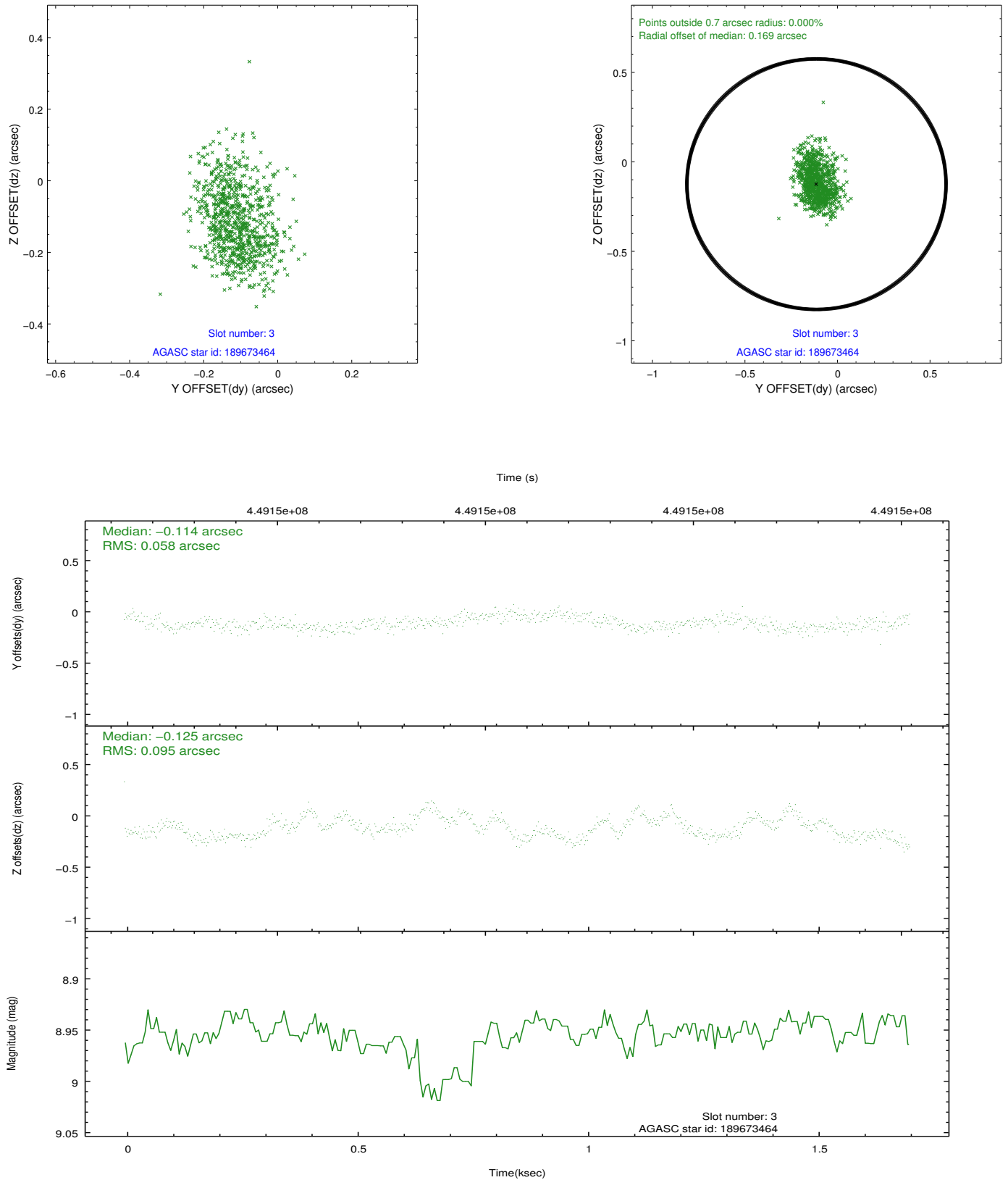


Slot Statistics

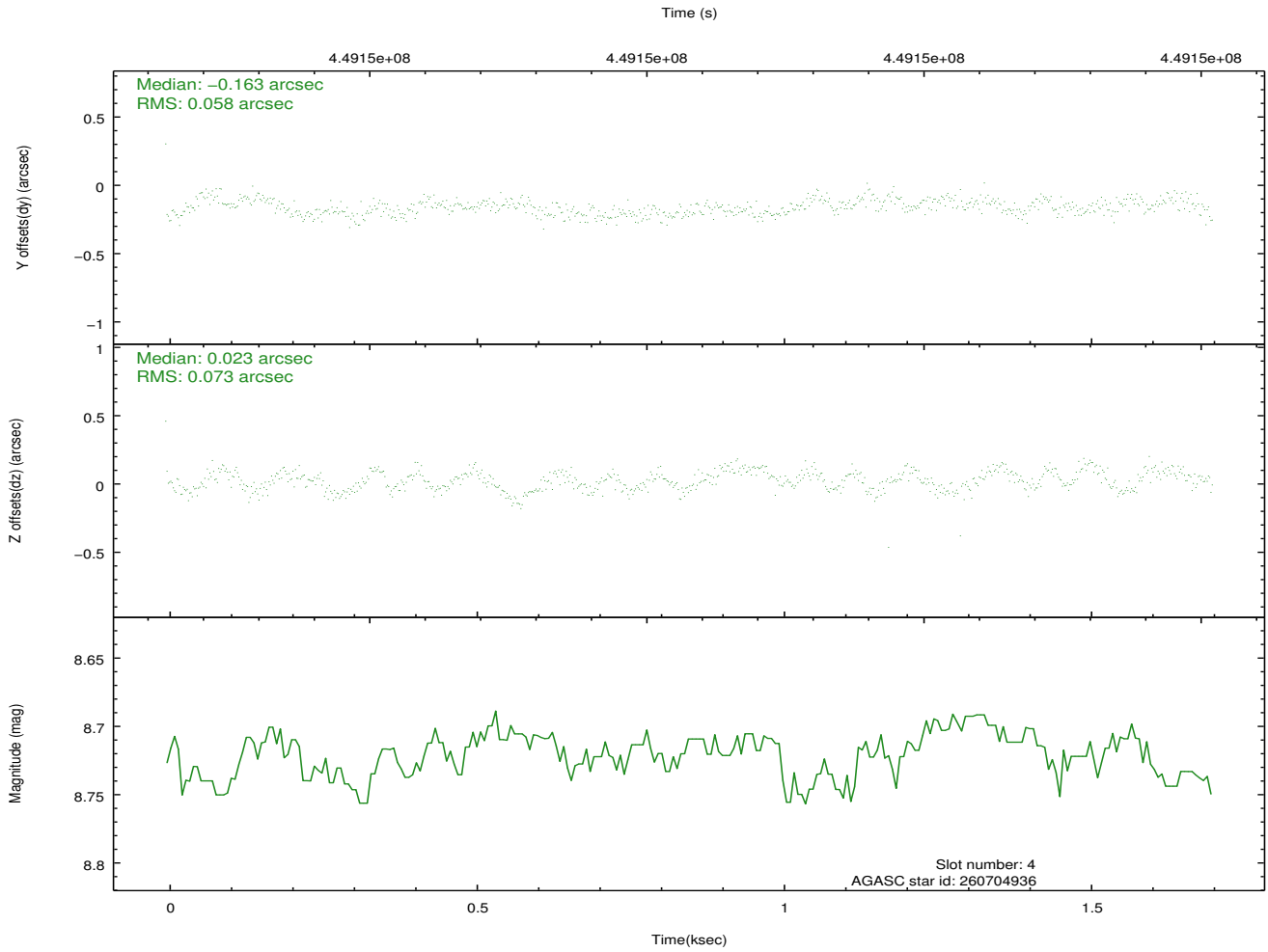
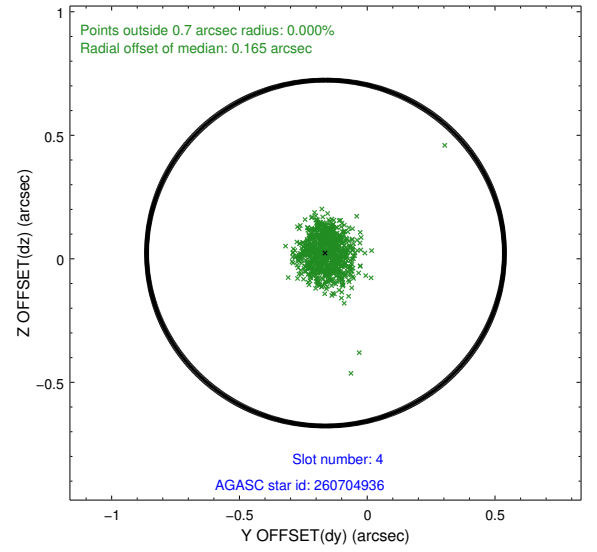
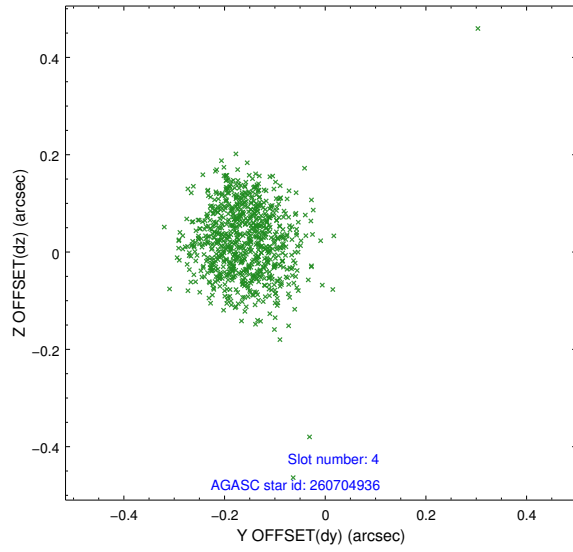
slot	status	id	mag	n_pts	med_dy	med_dz	dr1	dr2	ra	dec	mean_y	mean_z
0	FID	ACIS-S-1	7.11	416	0.061	-0.023	0.006	0.011	0.000000	0.000000	929.03	-1730.63
1	FID	ACIS-S-4	7.11	416	0.194	-0.009	0.006	0.009	0.000000	0.000000	2148.73	169.54
2	FID	ACIS-S-5	7.15	416	-0.282	0.044	0.005	0.011	0.000000	0.000000	-1815.21	167.60
3	GUIDE	189673464	8.95	832	-0.114	-0.125	0.115	0.192	186.126502	22.164808	819.43	1589.34
4	GUIDE	260704936	8.72	831	-0.163	0.023	0.095	0.145	186.343726	23.229088	229.94	-2263.69
5	GUIDE	260715392	9.86	831	0.001	-0.058	0.156	0.257	185.698122	22.873314	2324.11	-917.94
6	GUIDE	260715448	8.66	832	0.004	-0.064	0.078	0.121	186.268365	22.928494	443.39	-1175.82
7	GUIDE	260714104	9.70	828	0.265	0.229	0.191	0.301	186.710747	23.241228	-982.04	-2354.69

2.4 Star Slots

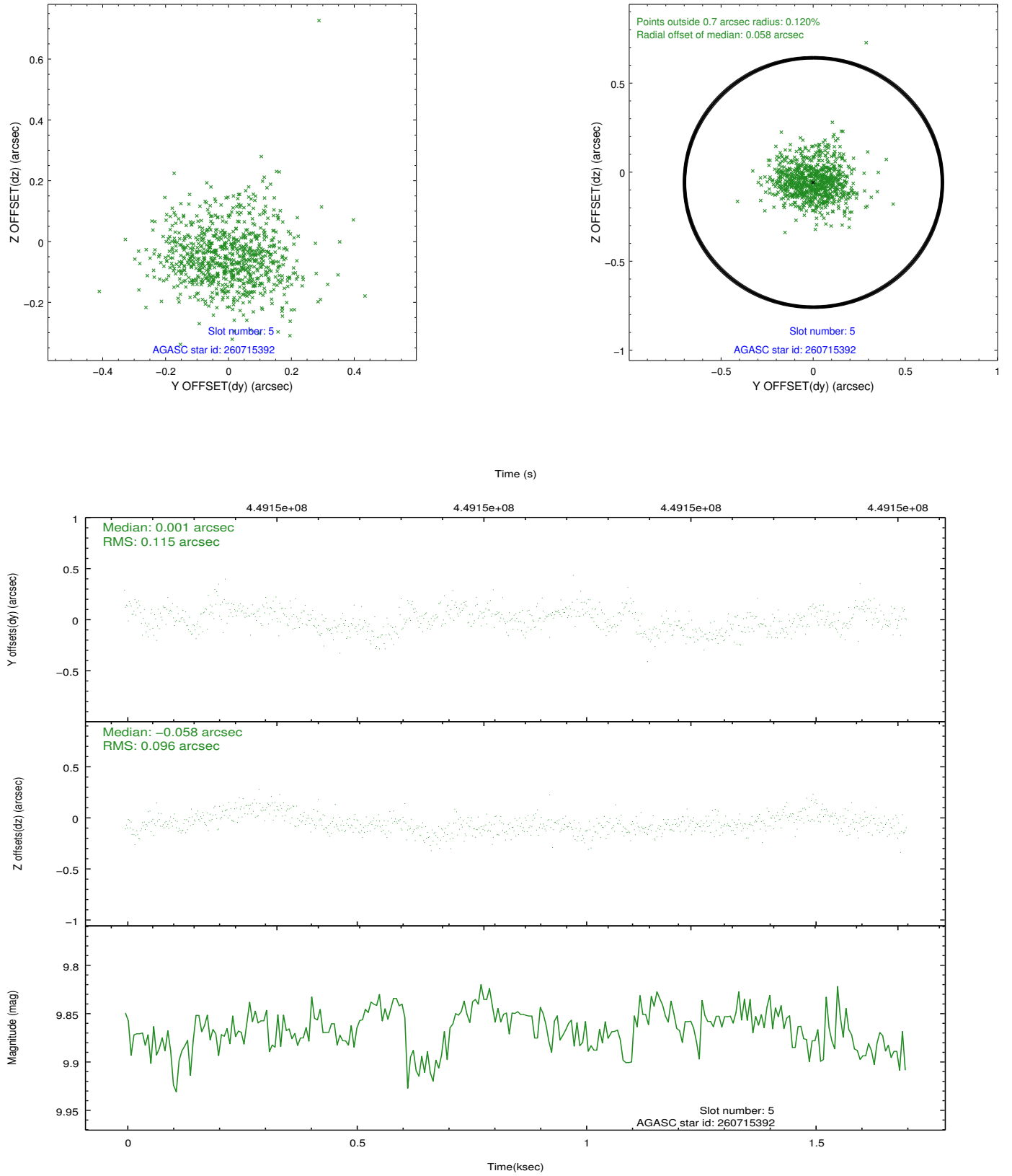
2.4.1 Slot 3



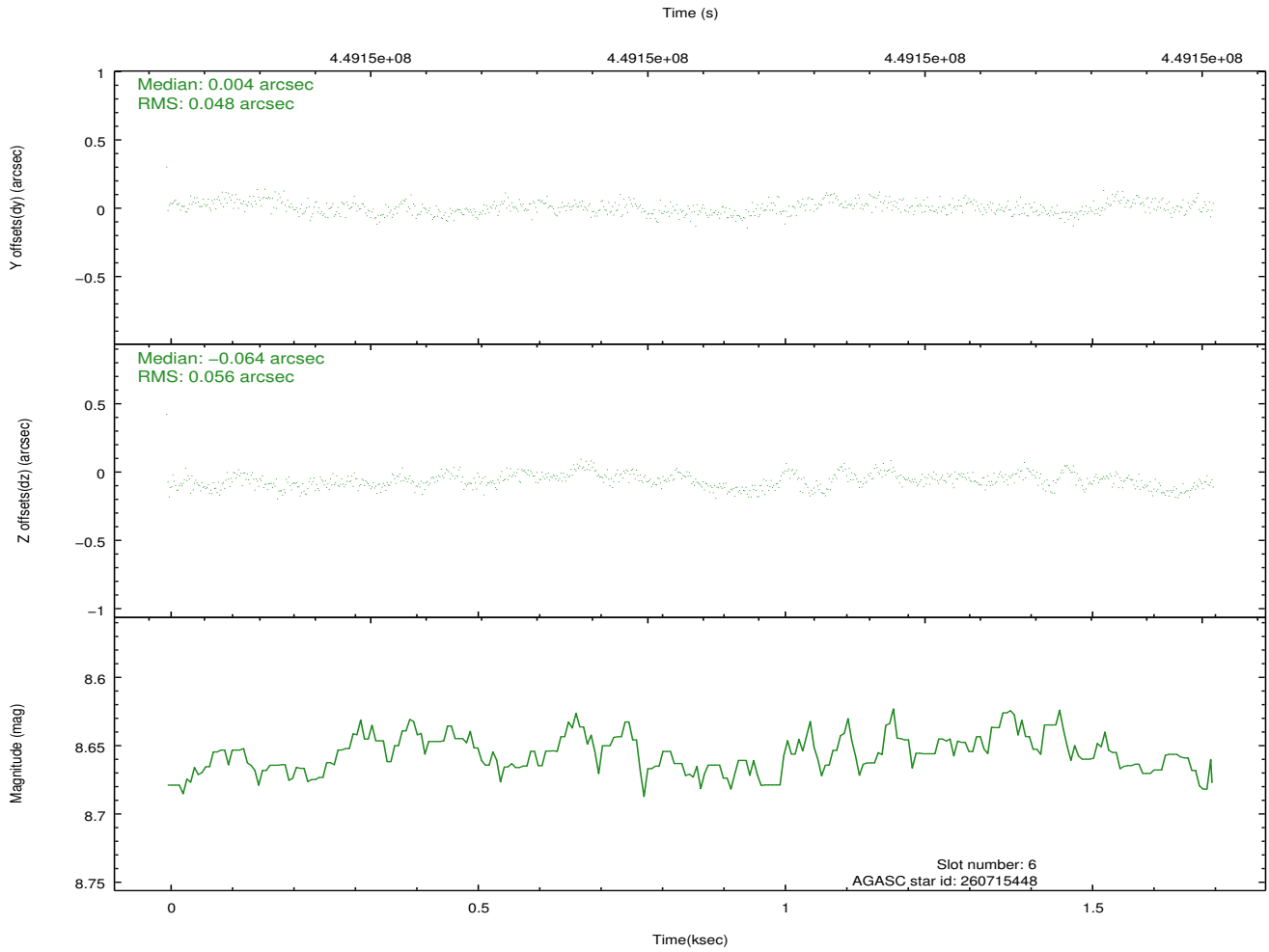
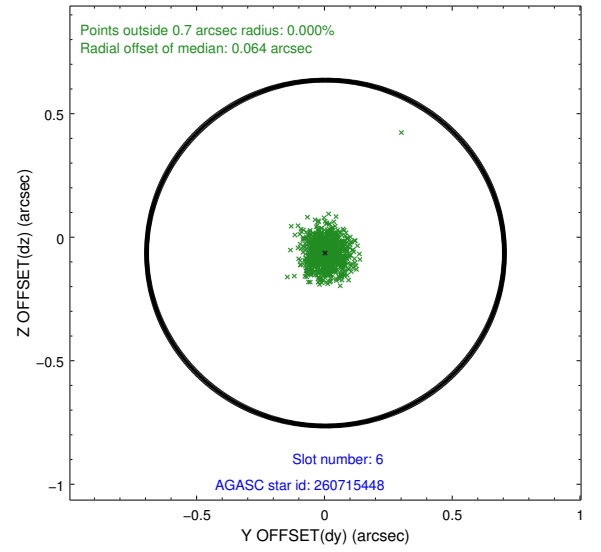
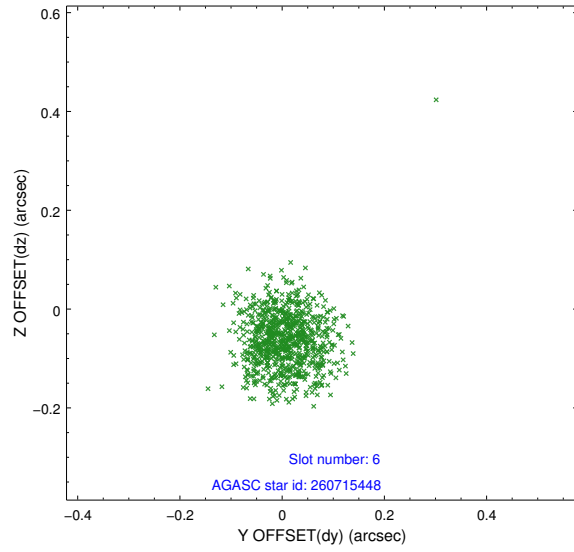
2.4.2 Slot 4



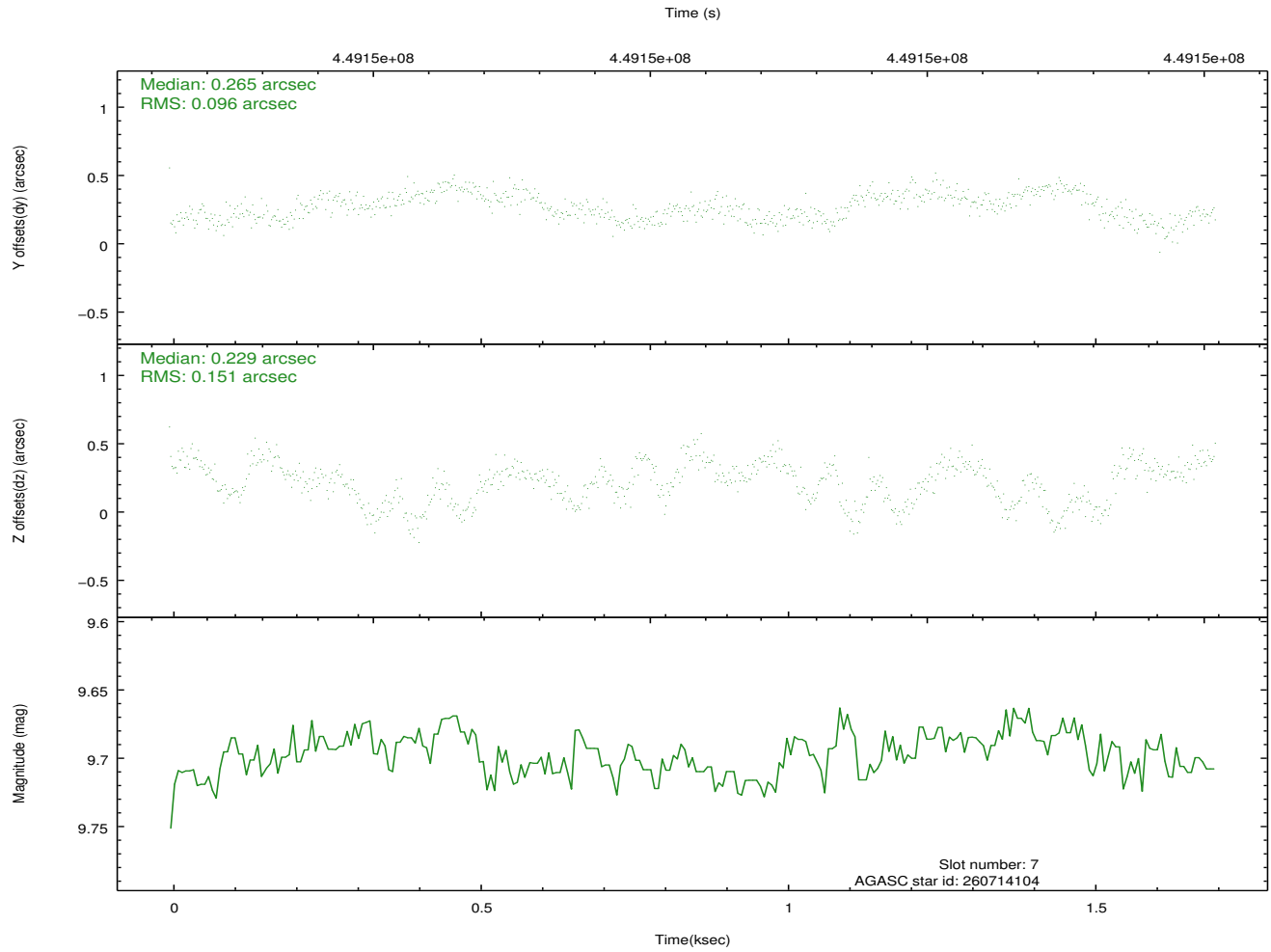
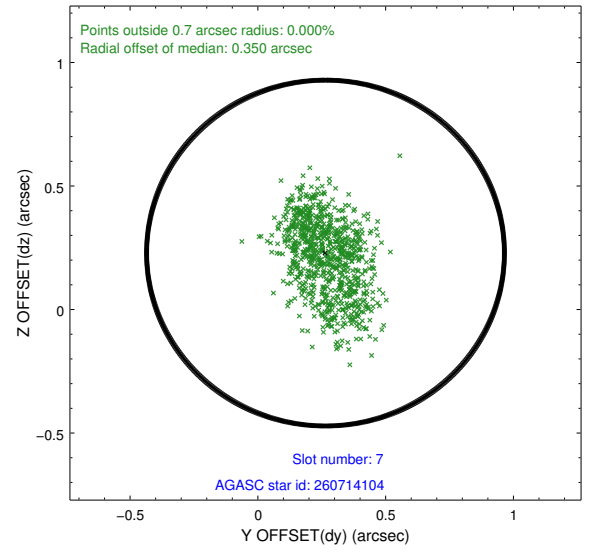
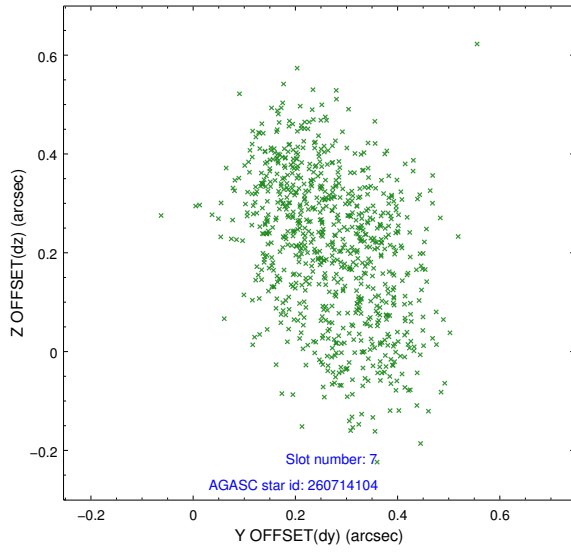
2.4.3 Slot 5



2.4.4 Slot 6

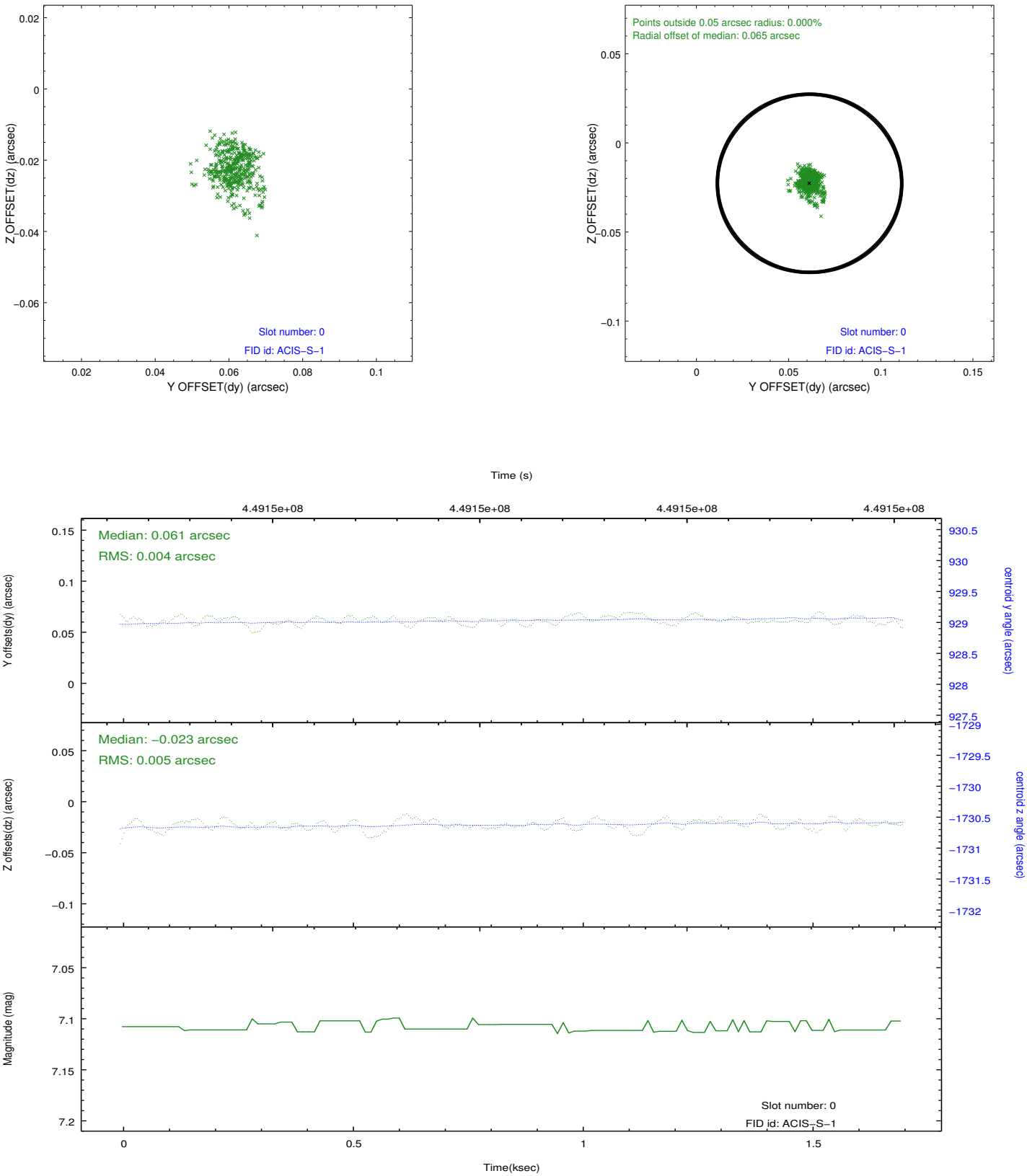


2.4.5 Slot 7

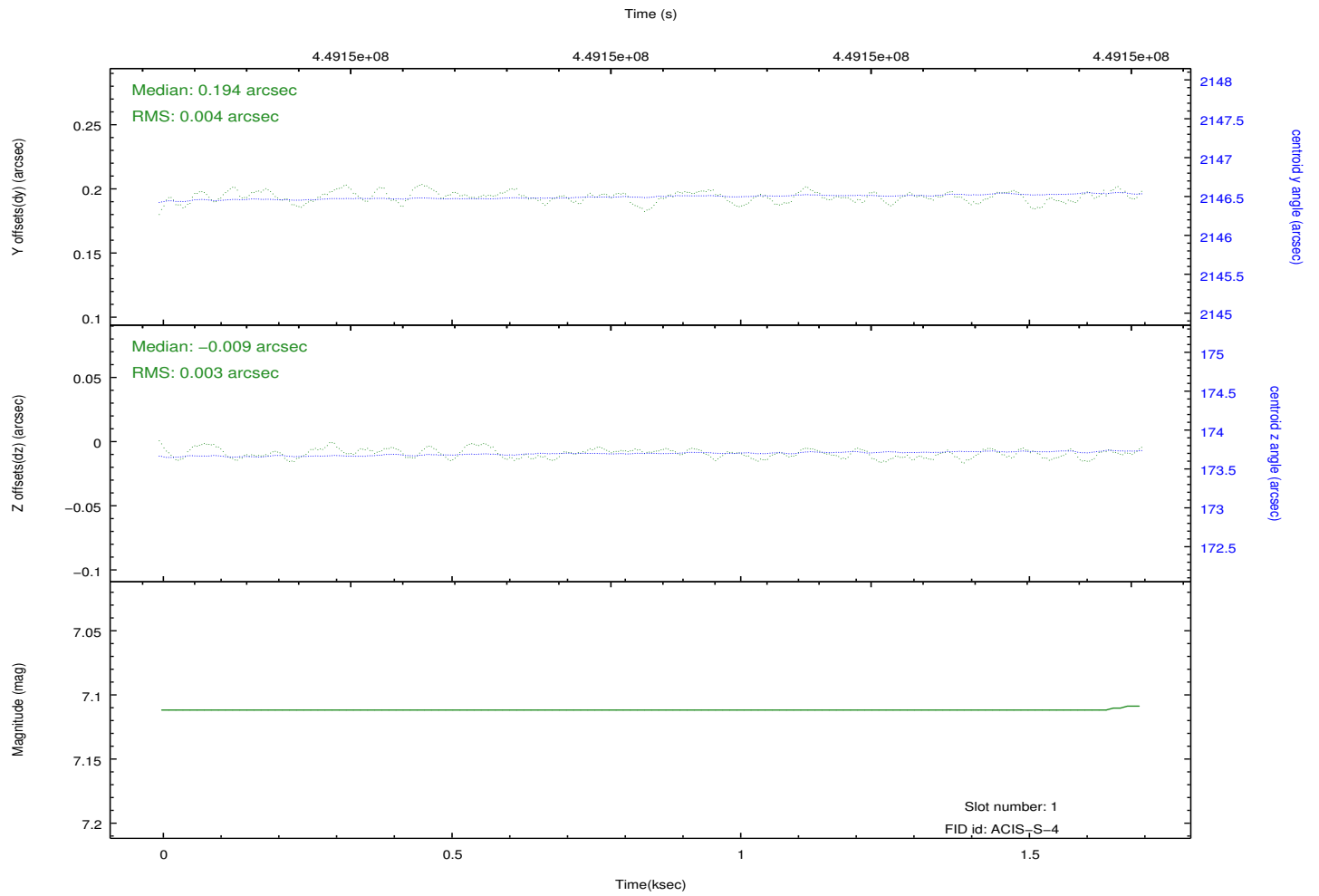
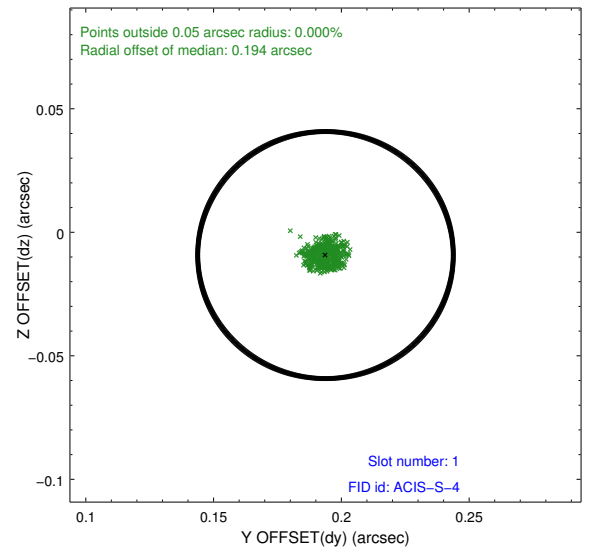
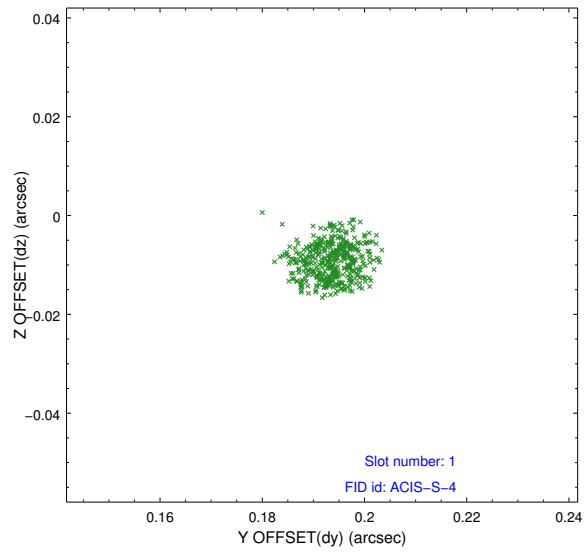


2.5 FID Slots

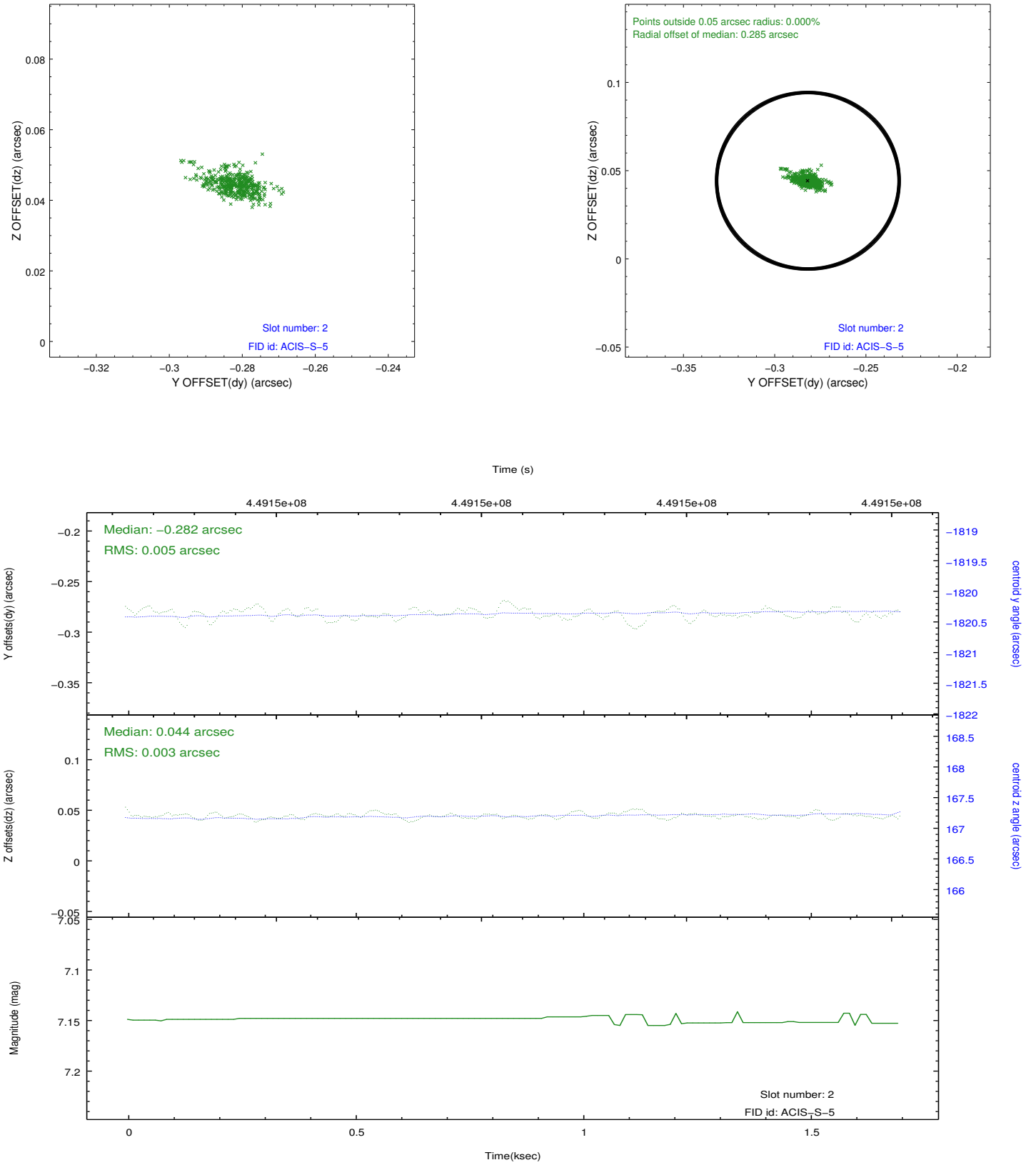
2.5.1 Slot 0



2.5.2 Slot 1



2.5.3 Slot 2



A Summary

A.1 Status

V&V Scientist	Joy Nichols
V&V Date (YYYY-MM-DD)	2012.03.27
V&V Edition	1
V&V Disposition and Status	OK
V&V Charge Time	1.5779000121355

A.2 Comments