

V&V Reference Report

L2 ASCDS Version : 8.4.3

Observation 13836 - L2 Version 1
Chandra X-Ray Center

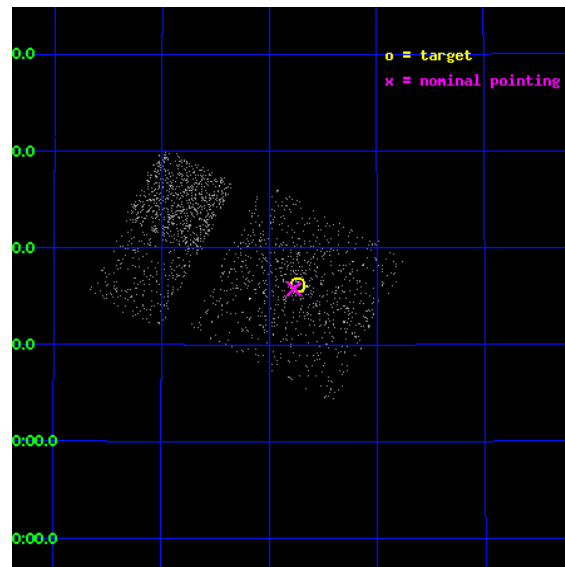
L2 Processing Date : Jan 17 2012

Contents

1	Front	2
2	OBI Primary	3
2.1	OBI	3
2.1.1	Images	3
2.1.2	Bias	3
2.1.3	Parameters	4
2.1.4	Events	4
2.2	Compared Parameters	5
2.3	Aspect	6
2.4	Star Slots	9
2.4.1	Slot 3	9
2.4.2	Slot 4	10
2.4.3	Slot 5	11
2.4.4	Slot 6	12
2.4.5	Slot 7	13
2.5	FID Slots	14
2.5.1	Slot 0	14
2.5.2	Slot 1	15
2.5.3	Slot 2	16
3	OBI Secondary	17
3.1	OBI	17
3.1.1	Images	17
3.1.2	Bias	17
3.1.3	Parameters	18
3.1.4	Events	18
A	Summary	19
A.1	Status	19
A.2	Comments	19

1 Front

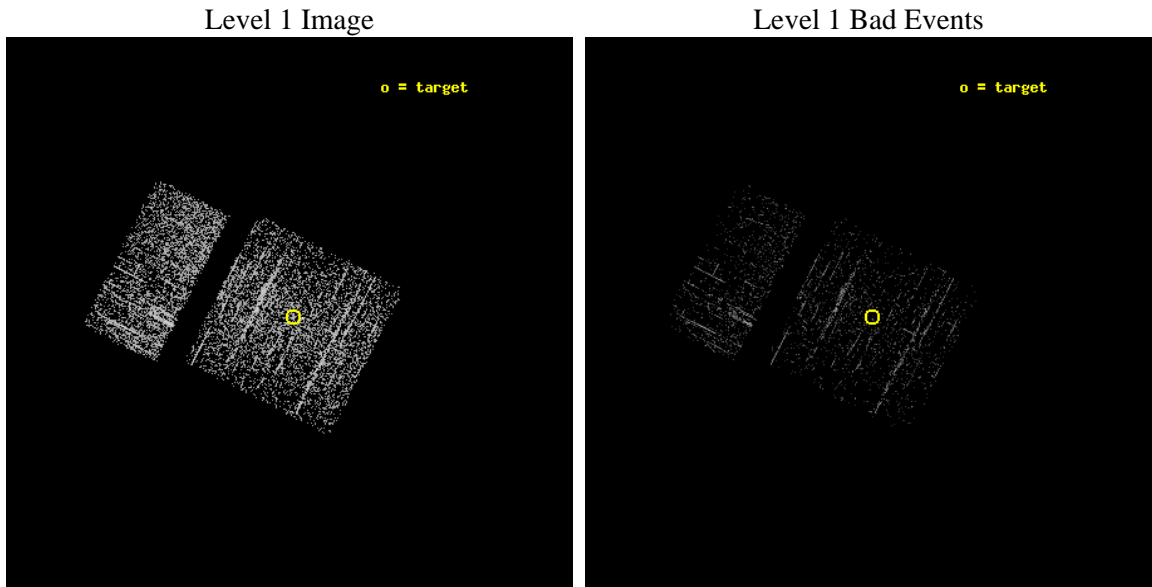
seq_num	601010	Sequence number
obs_id	13836	Observation id
title	Monitoring M31 for BHXNe	Proposal title
observer	Dr Michael Garcia	Principal investigator
object	M31 BHXN	Source name
dtcycle	0	
cycle	P	events are from which exps? P[rimary] S[econdar]
ra_targ	10.685	Observer's specified target RA [deg]
dec_targ	41.268972	Observer's specified target Dec [deg]
ra_nom	10.692609783554	Nominal RA [deg]
dec_nom	41.263285276465	Nominal Dec [deg]
roll_nom	297.14367356928	Nominal Roll [deg]
revision	1	Processing version of data
ontime	922.13491666317	Sum of GTIs [s]
liveltime	145.16627922786	Livetime [s]
ontime0	922.13491666317	Sum of GTIs [s]
ontime1	922.13491666317	Sum of GTIs [s]
ontime2	922.13491666317	Sum of GTIs [s]
ontime3	922.13491666317	Sum of GTIs [s]
ontime6	922.13491666317	Sum of GTIs [s]
ontime7	922.13491666317	Sum of GTIs [s]
l2events	2237	Number of level 2 events



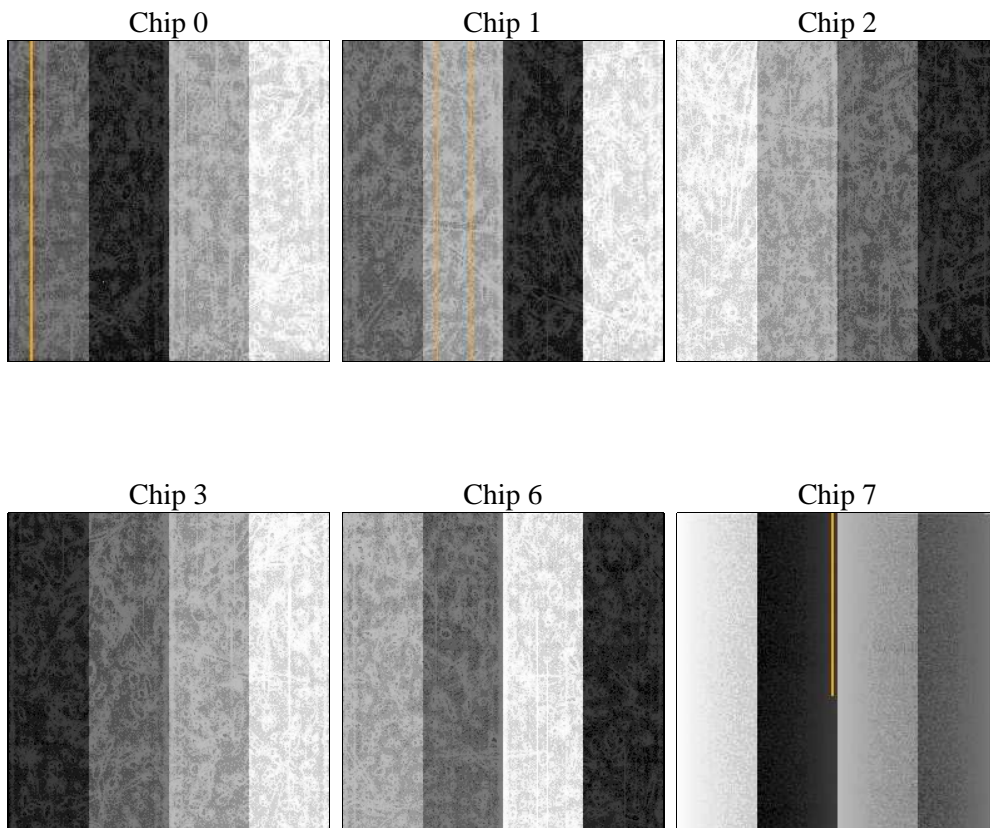
2 OBI Primary

2.1 OBI

2.1.1 Images



2.1.2 Bias



2.1.3 Parameters

obi_num	0	Obi number	sched_exp_time	5000.000000	[s] Scheduled observation exposure time
ascdsver	8.4.3	Processing system revision	ontime	922.13491666317	Sum of GTIs [s]
caldsver	4.4.7	 	ontime0	922.13491666317	Sum of GTIs [s]
date	2012-01-17T14:21:55	Date and time of file creation	ontime1	922.13491666317	Sum of GTIs [s]
revision	1	Processing version of data	ontime2	922.13491666317	Sum of GTIs [s]
			ontime3	922.13491666317	Sum of GTIs [s]
			ontime6	922.13491666317	Sum of GTIs [s]
			ontime7	922.13491666317	Sum of GTIs [s]
			l1events	17815	Number of level 1 events

2.1.4 Events

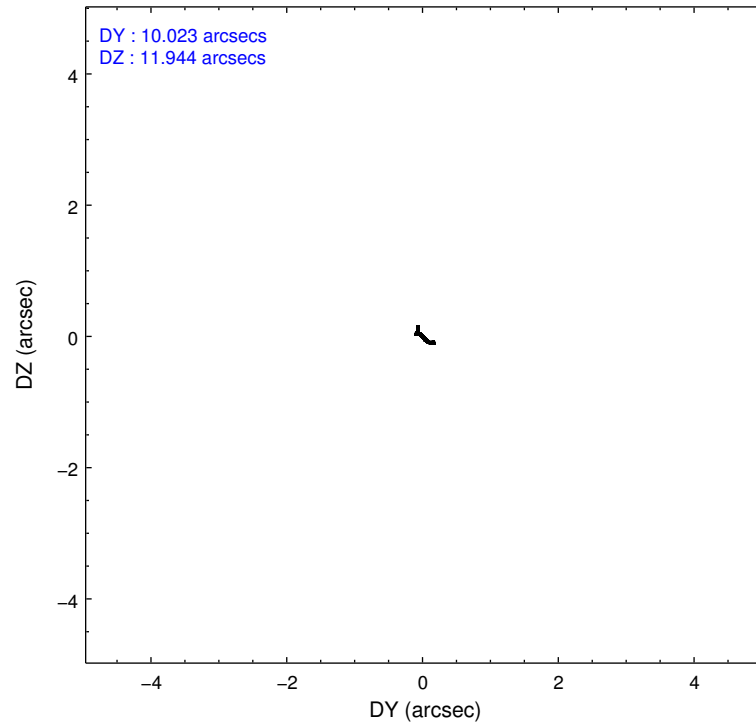
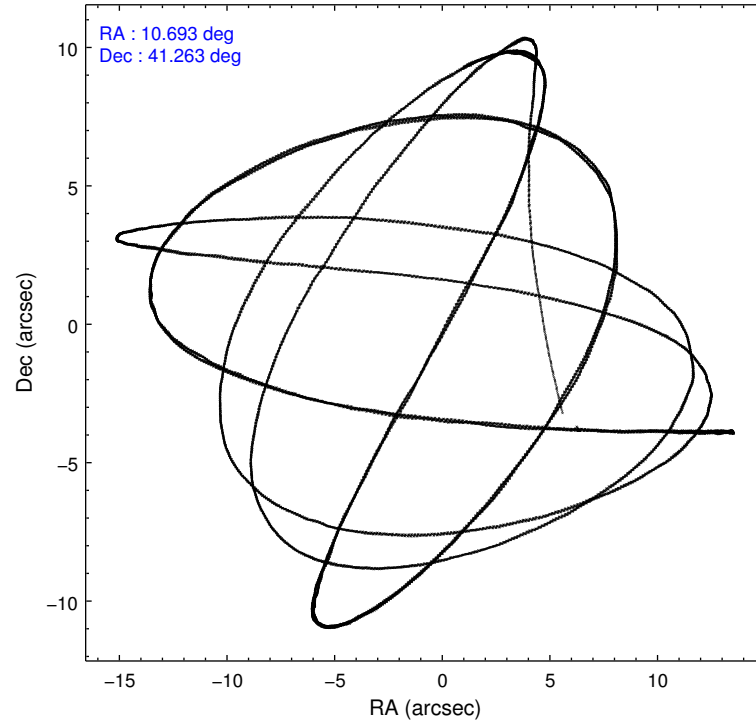
	ccd 0	ccd 1	ccd 2	ccd 3	ccd 6	ccd 7
level 1 events	2507	2833	2943	2836	3686	3010
rejected events	2247	2416	2597	2459	3413	2140
rejected %	89%	85%	88%	86%	92%	71%

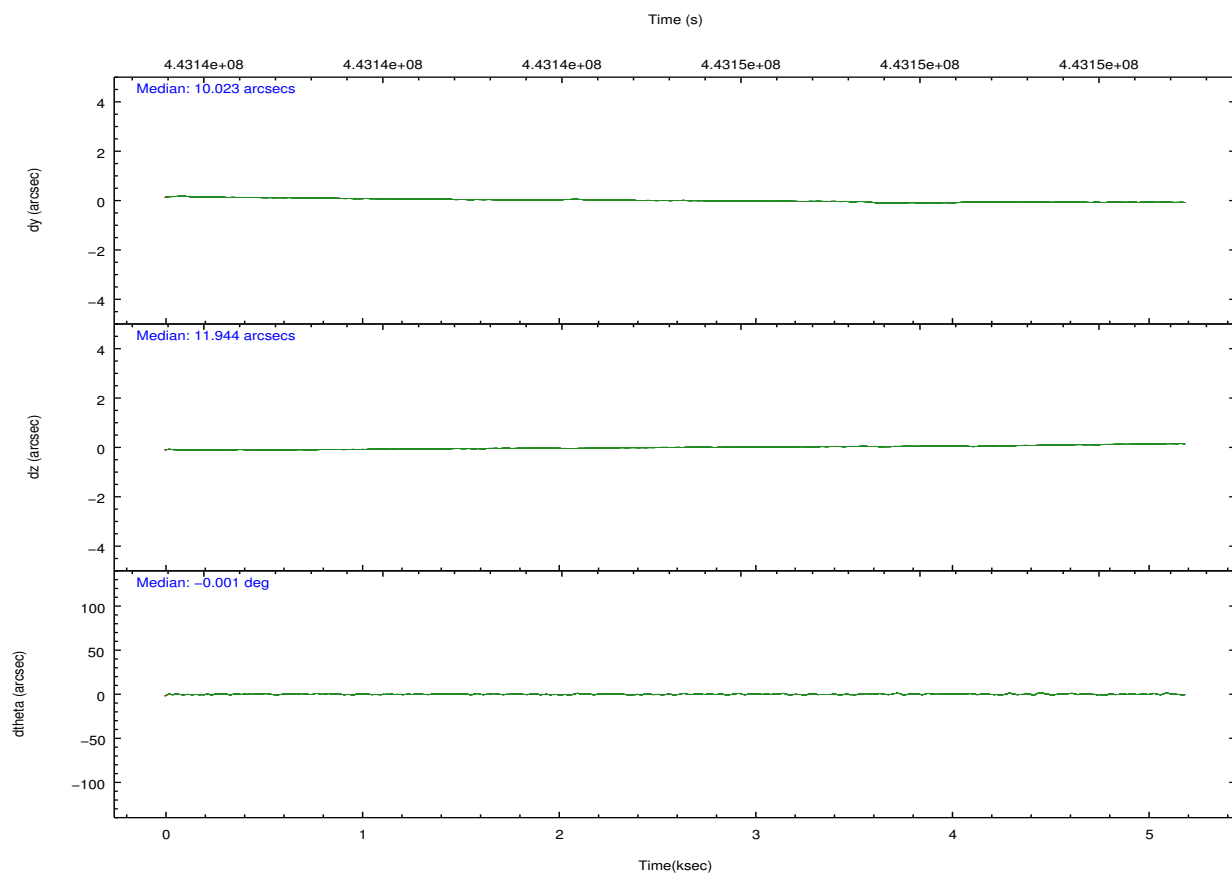
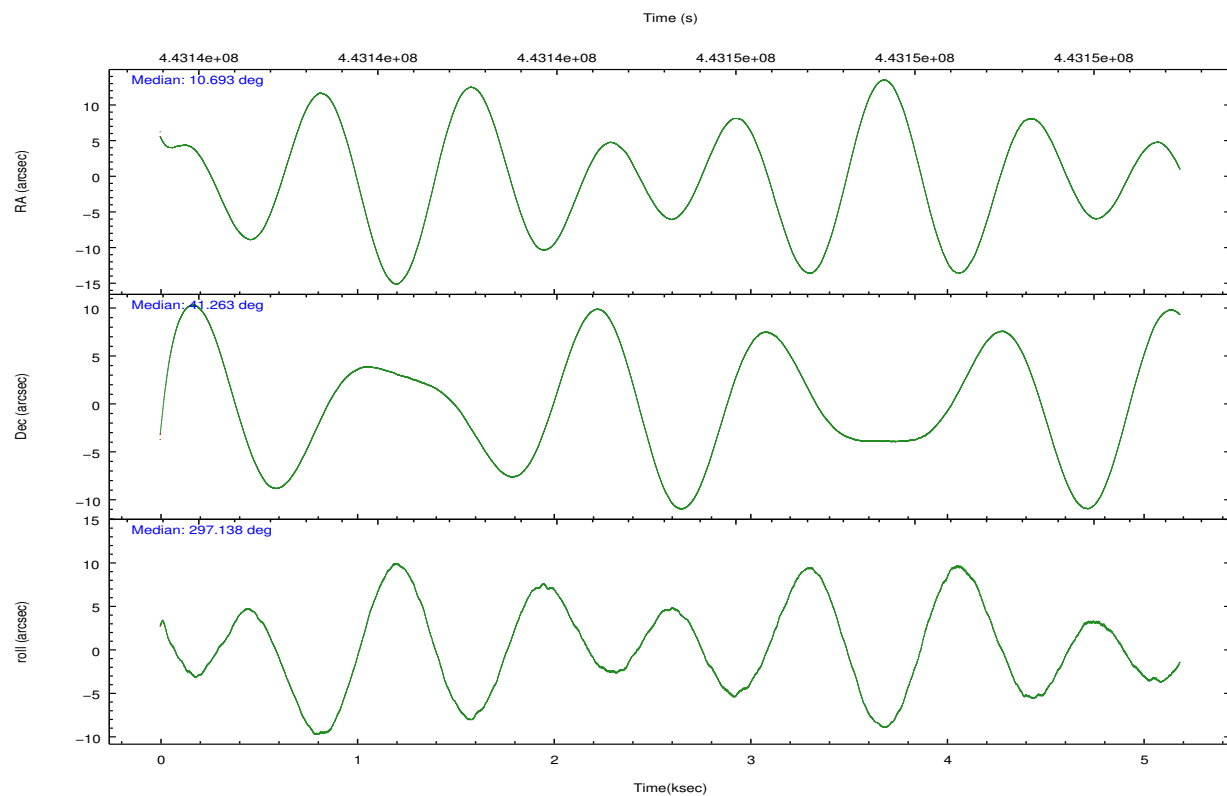
	ccd 0	ccd 1	ccd 2	ccd 3	ccd 6	ccd 7
grade 0 events	107	183	145	167	81	87
	4%	6%	4%	5%	2%	2%
grade 1 events	0	1	1	0	1	6
	0%	0%	0%	0%	0%	0%
grade 2 events	50	76	99	85	77	216
	1%	2%	3%	2%	2%	7%
grade 3 events	32	53	24	45	31	67
	1%	1%	0%	1%	0%	2%
grade 4 events	33	34	29	33	30	79
	1%	1%	0%	1%	0%	2%
grade 5 events	101	105	108	123	143	251
	4%	3%	3%	4%	3%	8%
grade 6 events	40	76	52	49	57	430
	1%	2%	1%	1%	1%	14%
grade 7 events	2144	2305	2485	2334	3266	1874
	85%	81%	84%	82%	88%	62%

2.2 Compared Parameters

Parameter	Planned	Actual	Parameter	Planned	Actual
Instrument	ACIS	ACIS	Obspar format version number	7	7
Detector	ACIS-012367	ACIS-012367	Obspar file type	PREDICTED	ACTUAL
Grating	NONE	NONE	Obspar update status	NONE	UPDATED
Data mode	FAINT	FAINT	CCD I0 on	Y	Y
Observation mode	POINTING	POINTING	CCD I1 on	Y	Y
[deg] Pointing RA	10.661706	10.69260978355403	CCD I2 on	Y	Y
[deg] Pointing Dec	41.278020	41.26328527646545	CCD I3 on	Y	Y
[deg] Pointing Roll	296.955353	297.1436735692751	CCD S0 on	N	N
[mm] SIM focus pos	-0.782348	-0.7809083437167272	CCD S1 on	N	N
[mm] SIM defocus	0	0.001439871863259334	CCD S2 on	O1	Y
[mm] SIM translation stage pos	-233.592463	-233.5874344608287	CCD S3 on	O2	Y
[mm] SIM translation stage offset	0	-0.005018542100998502	CCD S4 on	N	N
[s] Observation start time (MET)	443143221.184000	443142229.73122	CCD S5 on	N	N
Observation start date	2012-01-16T23:19:15	2012-01-16T23:03:49	Number of optional ACIS chips dropped	0	0
[s] Observation end time (MET)	443148221.184000	443149342.20659	On-chip summing requested	N	N
Observation end date	2012-01-17T00:42:35	2012-01-17T01:02:22	Subarray requested	NONE	NONE
Read mode	TIMED	TIMED	Alternating exposures requested	Y	Y
			[s] Primary exposure time	0.600000	0.6
			[s] Secondary exposure time	0.000000	3.2
			Duty cycle	5	5

2.3 Aspect



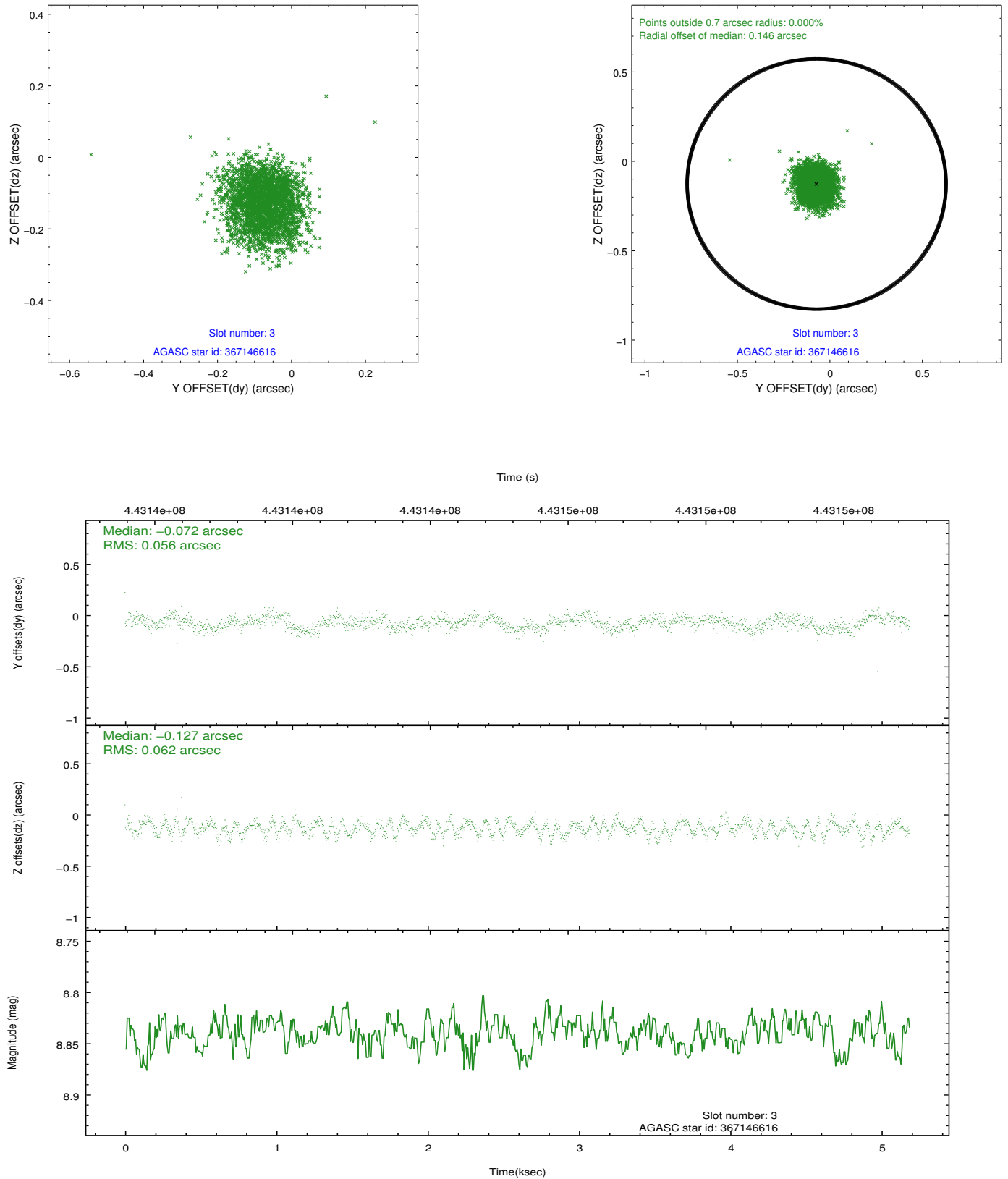


Slot Statistics

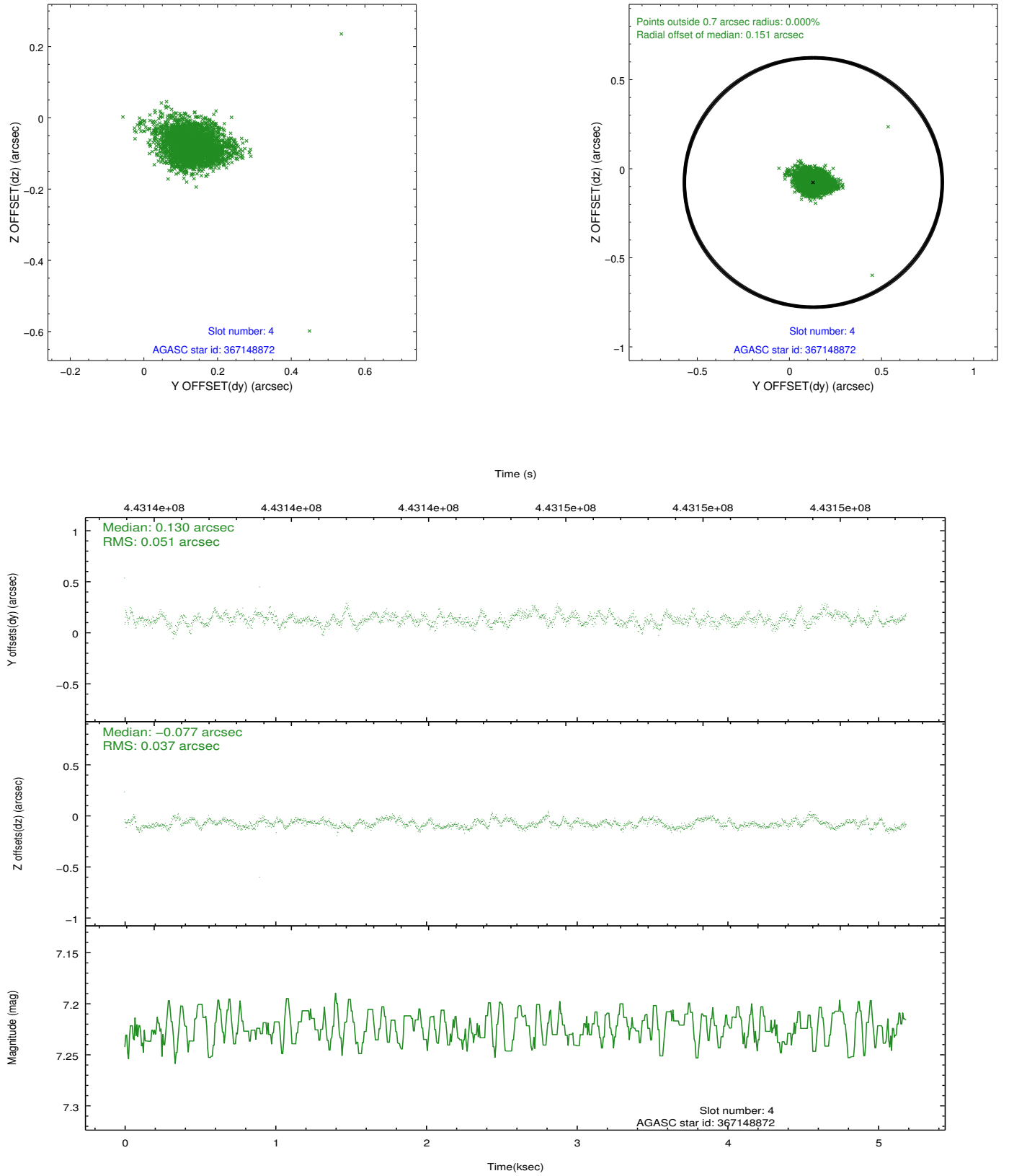
slot	status	id	mag	n_pts	med_dy	med_dz	dr1	dr2	ra	dec	mean_y	mean_z
0	FID	ACIS-I-1	7.19	1266	0.110	-0.084	0.006	0.011	0.000000	0.000000	929.66	-835.56
1	FID	ACIS-I-5	7.17	1266	-0.239	0.099	0.006	0.010	0.000000	0.000000	-1818.12	1061.57
2	FID	ACIS-I-6	7.18	1266	0.039	0.056	0.007	0.013	0.000000	0.000000	393.91	1707.32
3	GUIDE	367146616	8.84	2529	-0.072	-0.127	0.089	0.139	11.418645	41.190163	1203.72	1688.26
4	GUIDE	367148872	7.22	2530	0.130	-0.077	0.063	0.107	10.505940	40.688258	1701.19	-1341.26
5	GUIDE	367657896	8.98	2528	-0.004	0.107	0.087	0.141	11.197765	41.313576	539.95	1351.45
6	GUIDE	367663272	9.28	2530	-0.094	0.042	0.101	0.155	10.656279	41.699429	-1358.41	673.82
7	GUIDE	367674552	8.84	2530	0.042	0.052	0.082	0.133	11.016238	41.570845	-508.58	1329.97

2.4 Star Slots

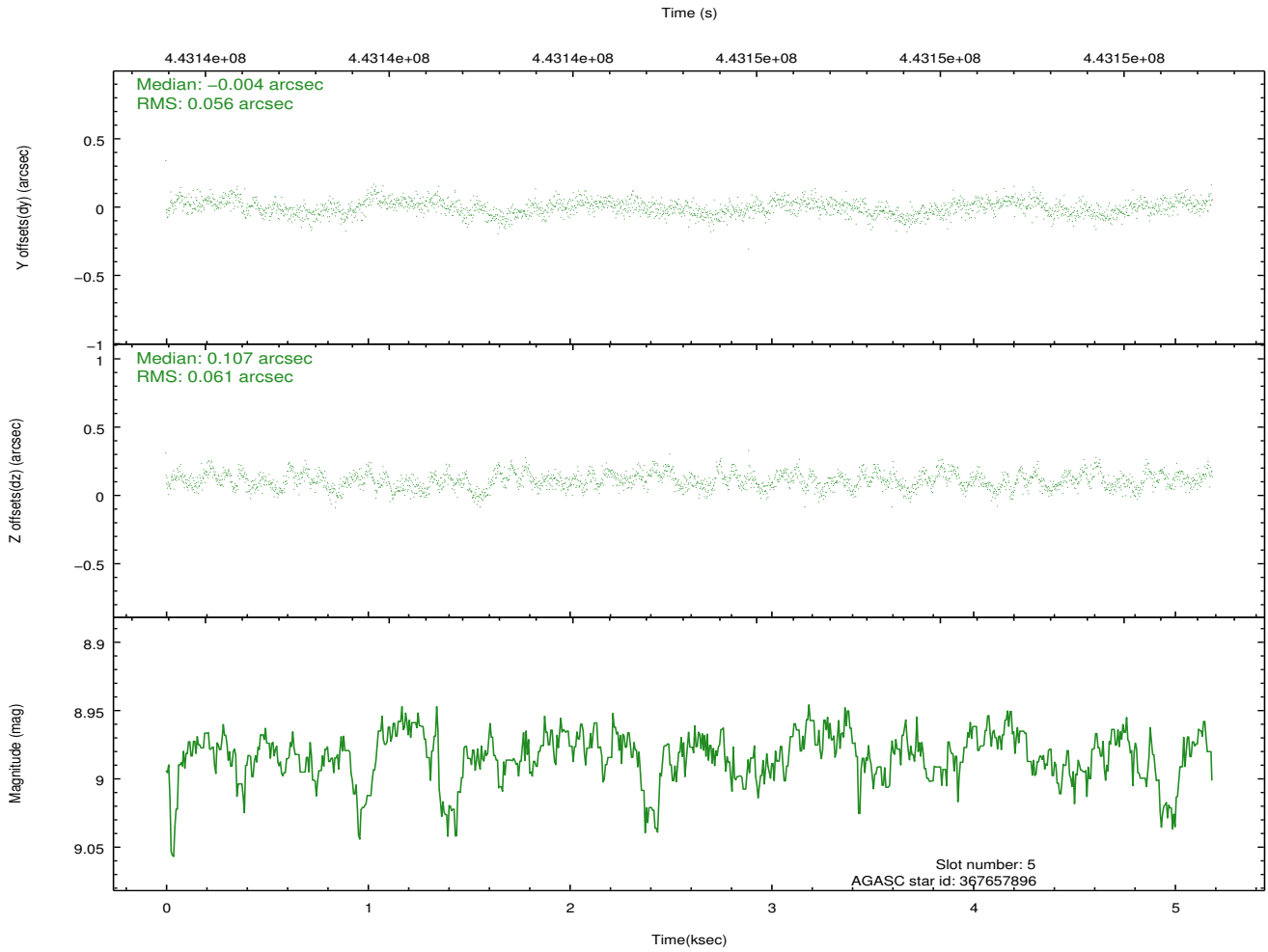
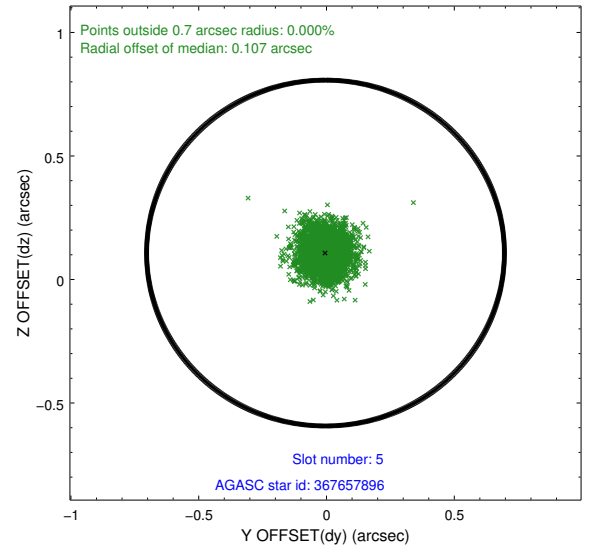
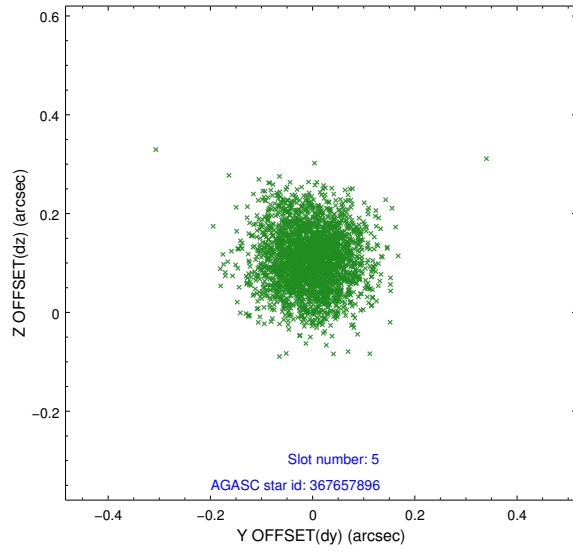
2.4.1 Slot 3



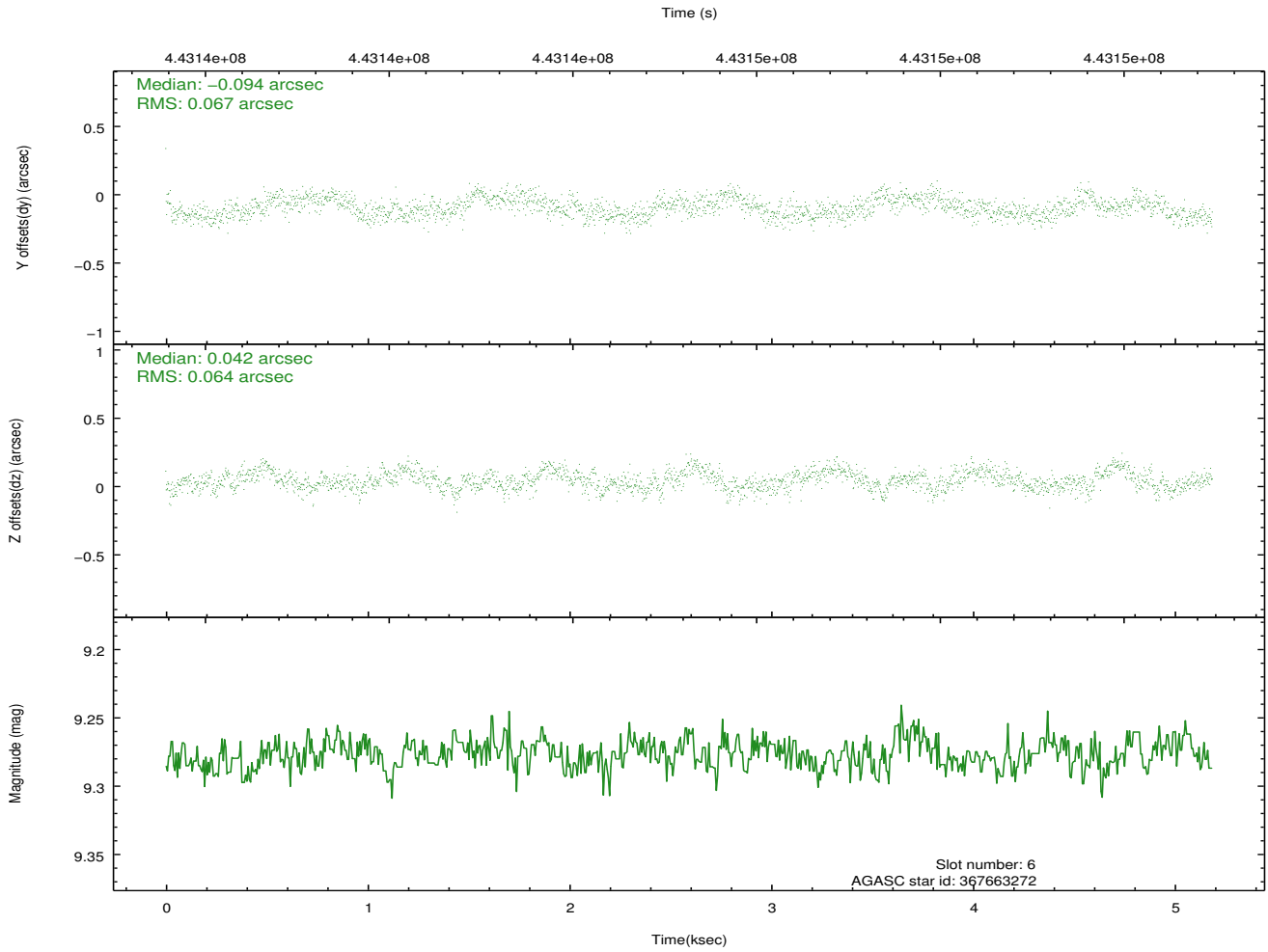
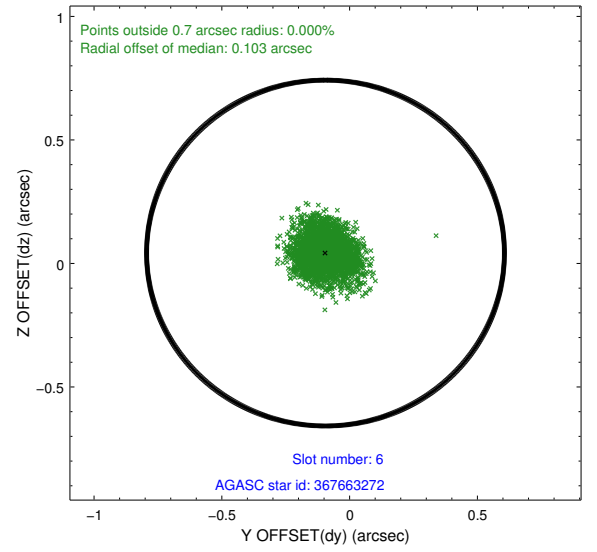
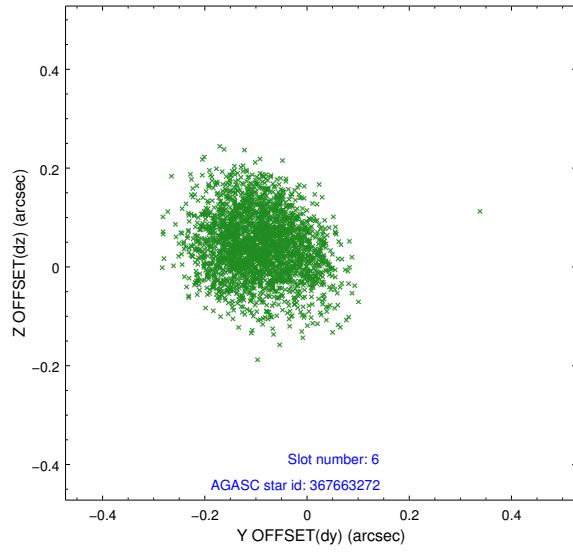
2.4.2 Slot 4



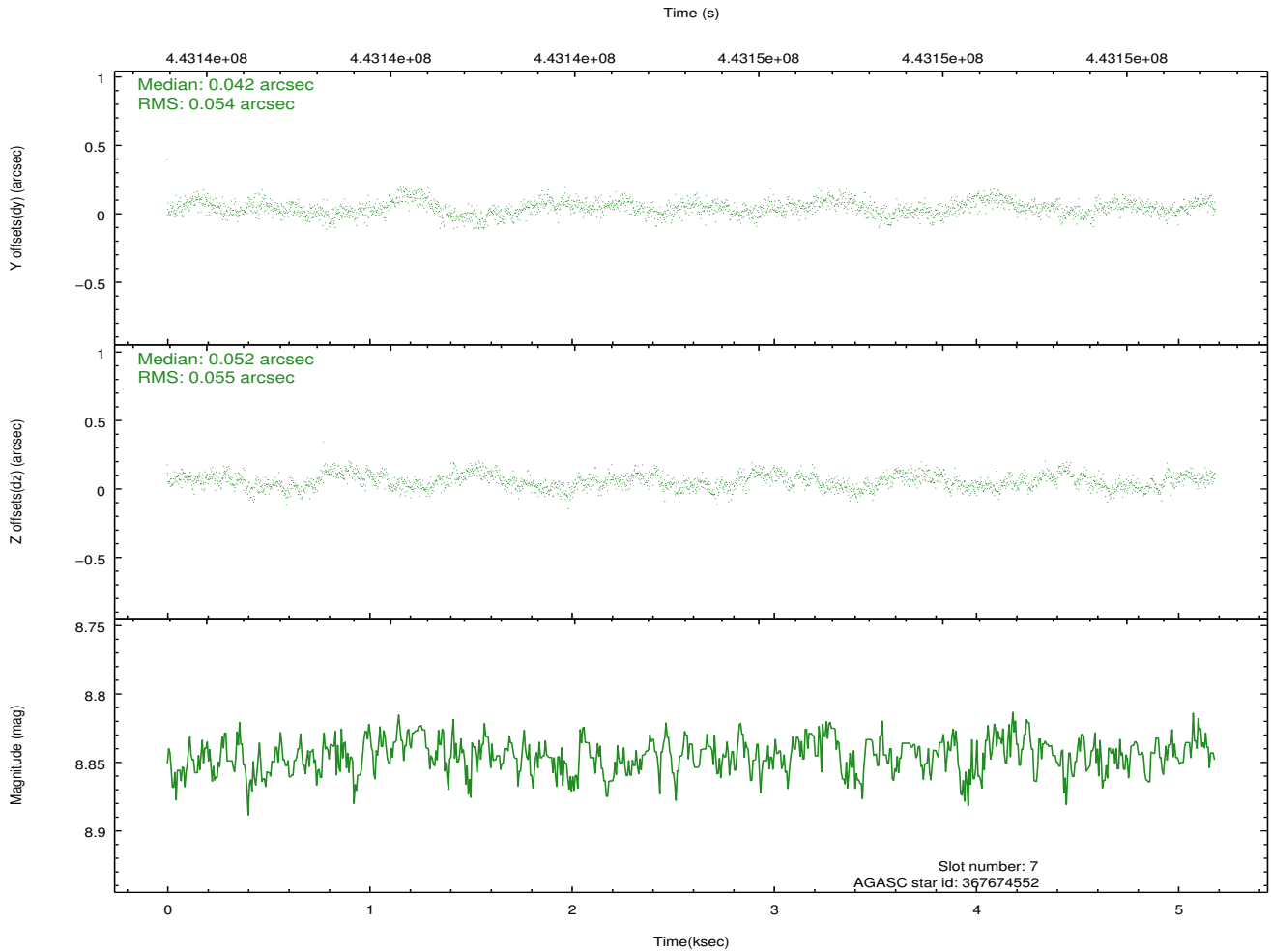
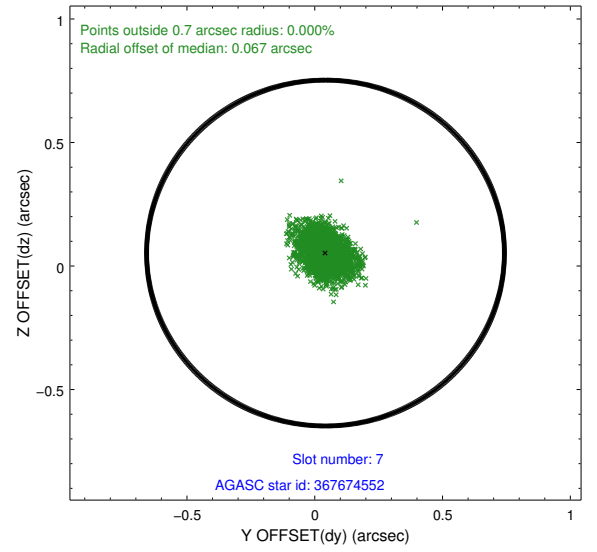
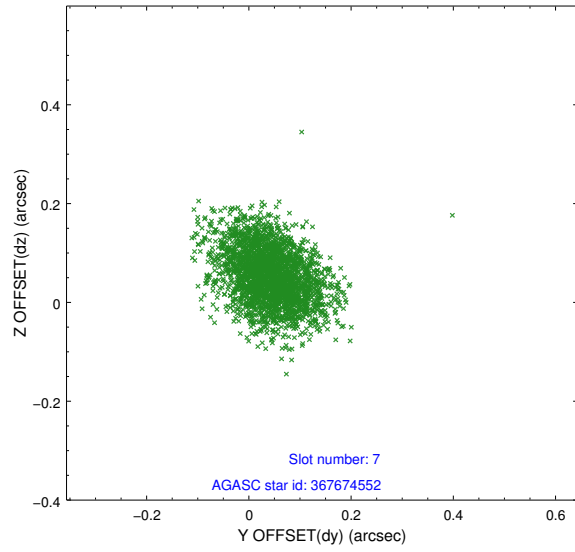
2.4.3 Slot 5



2.4.4 Slot 6

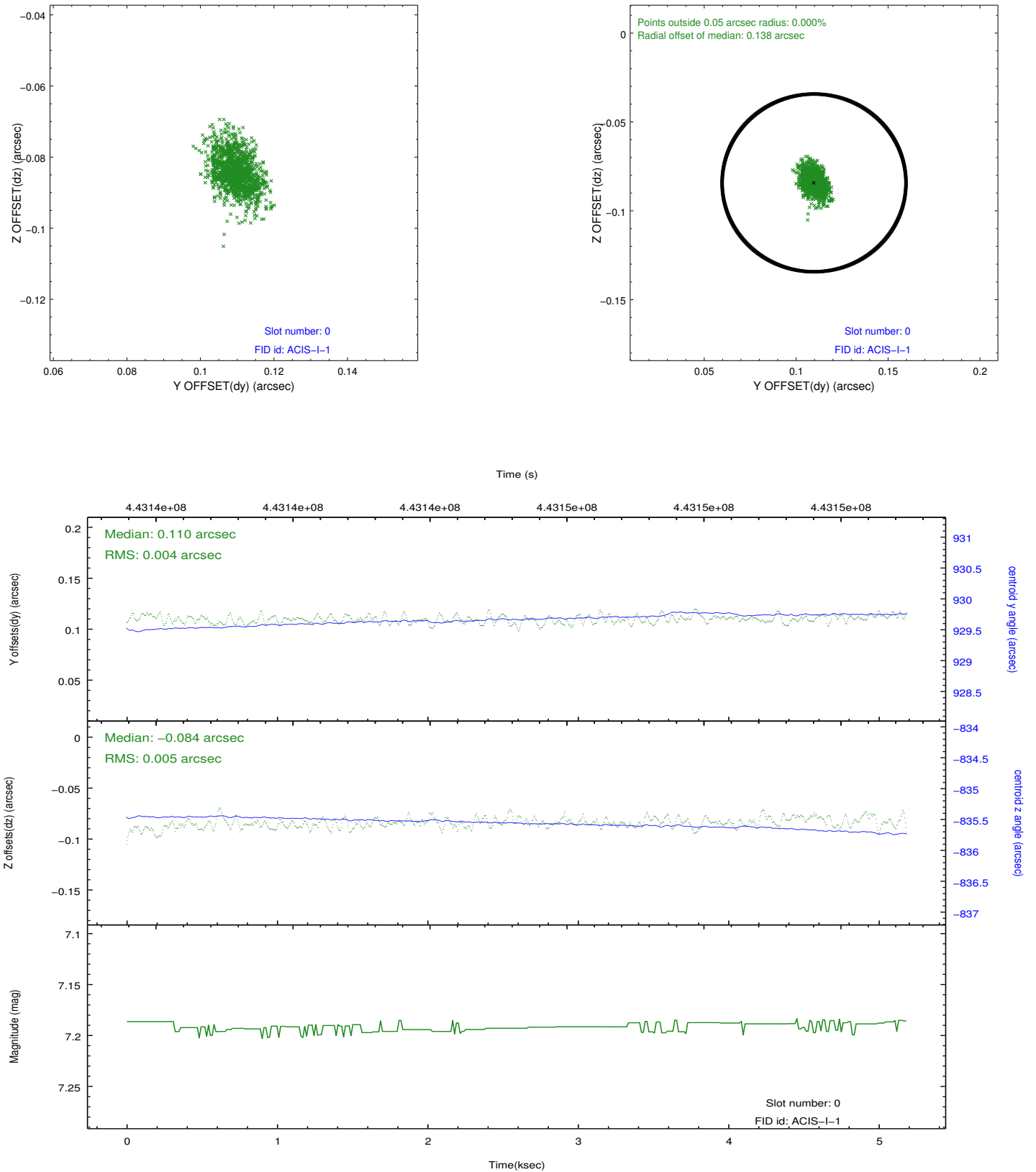


2.4.5 Slot 7

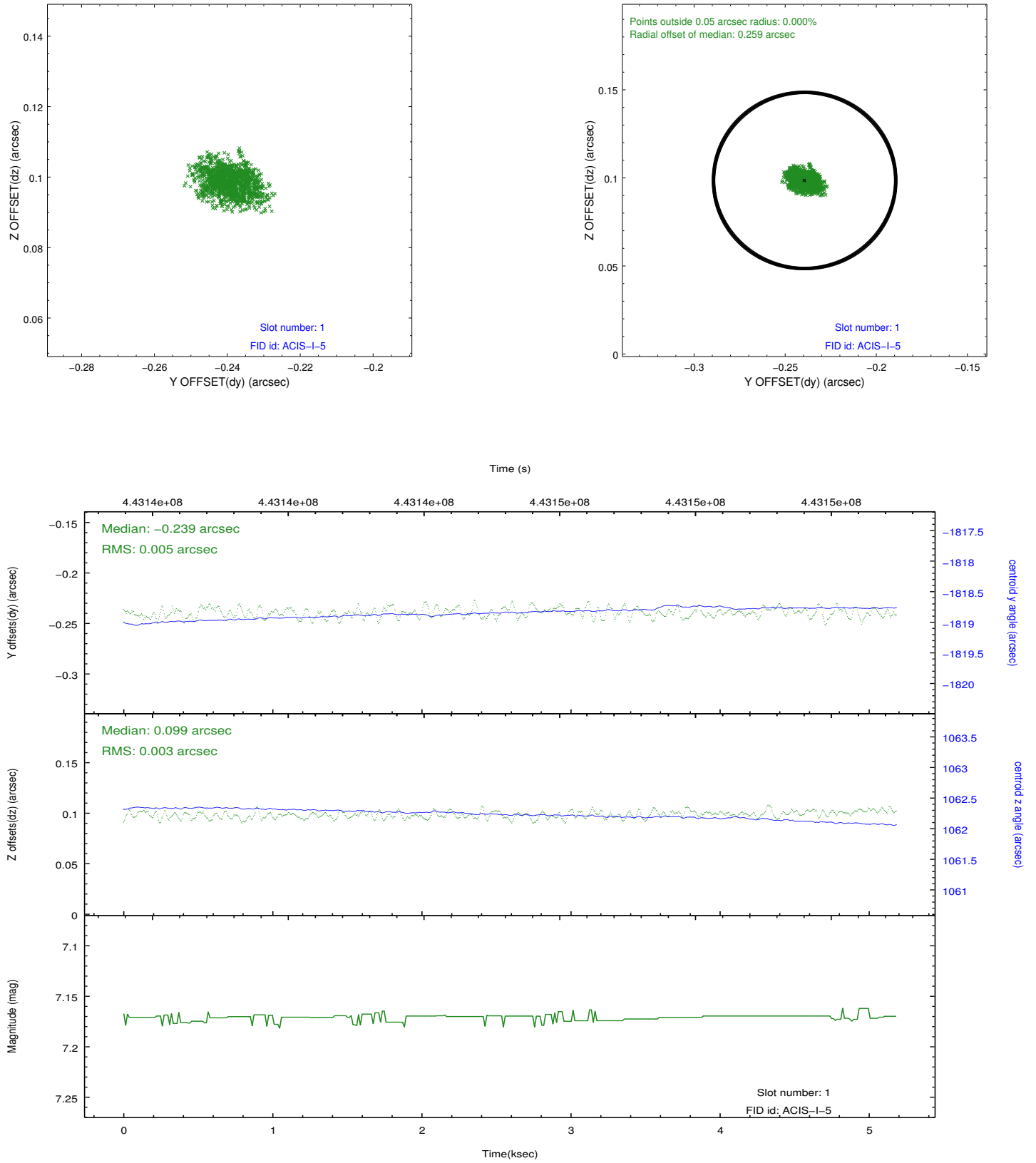


2.5 FID Slots

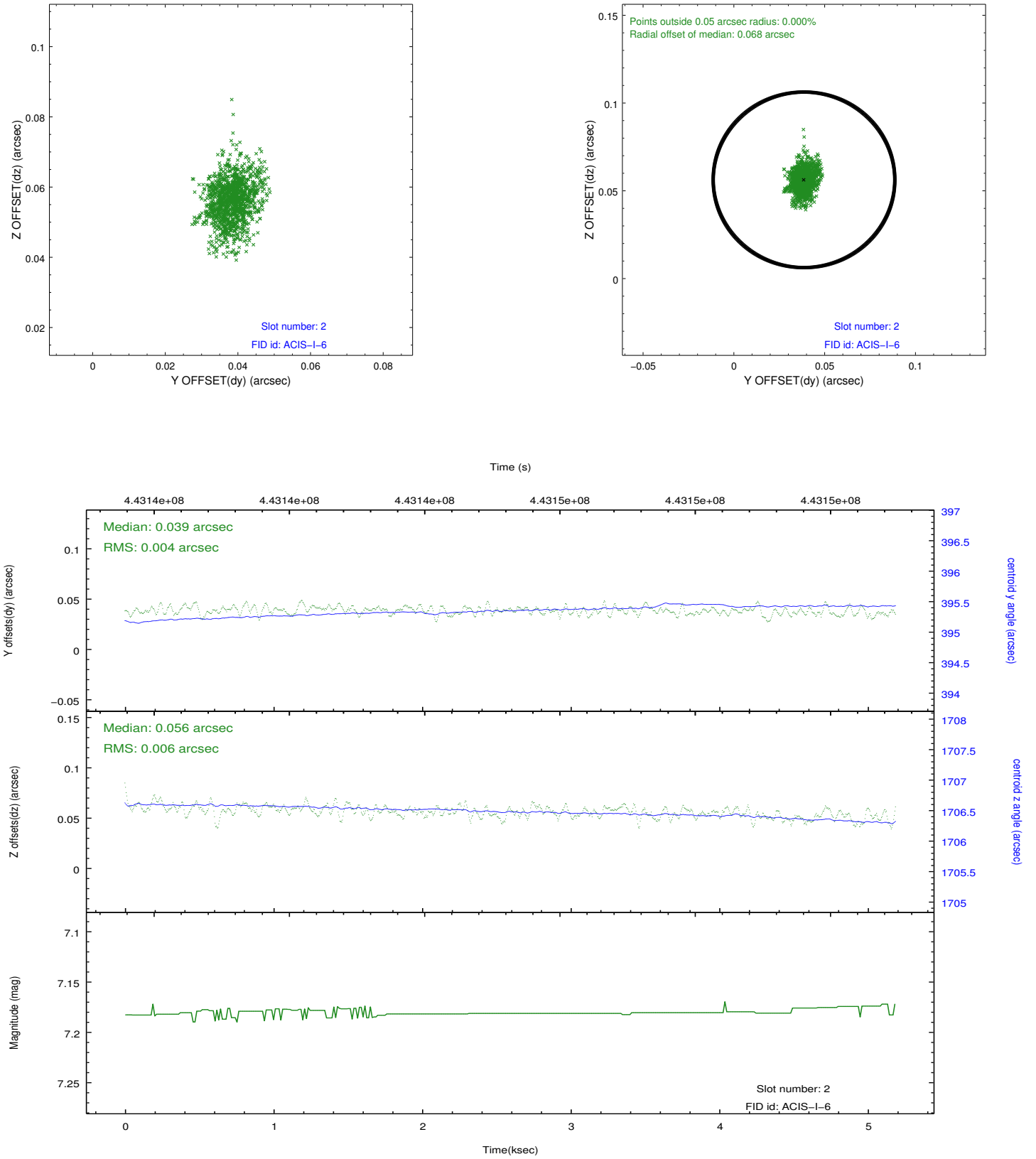
2.5.1 Slot 0



2.5.2 Slot 1



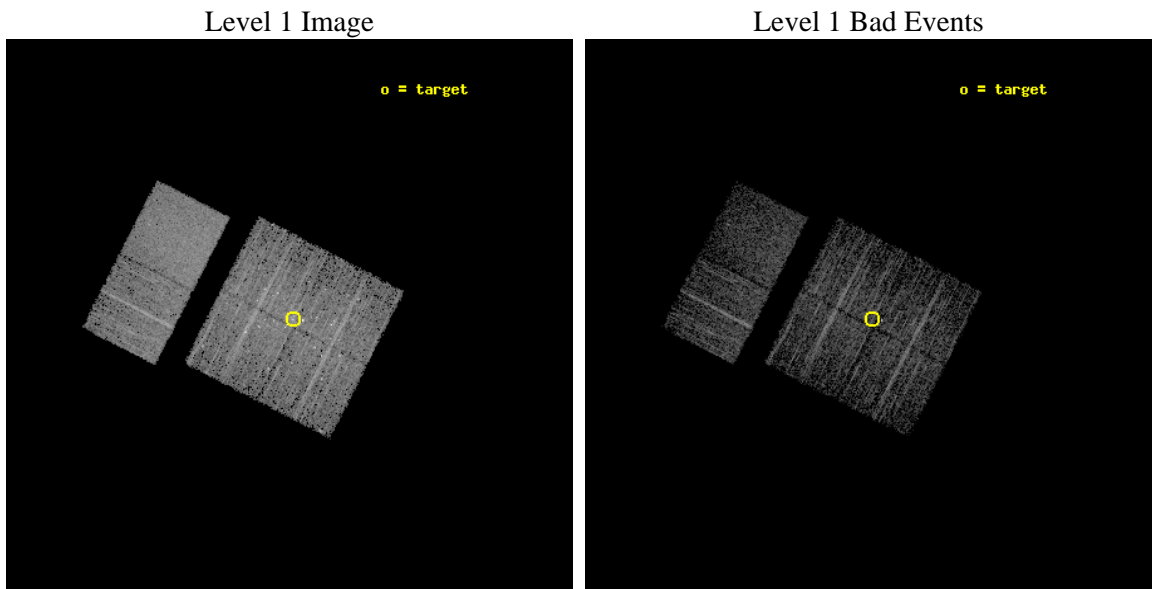
2.5.3 Slot 2



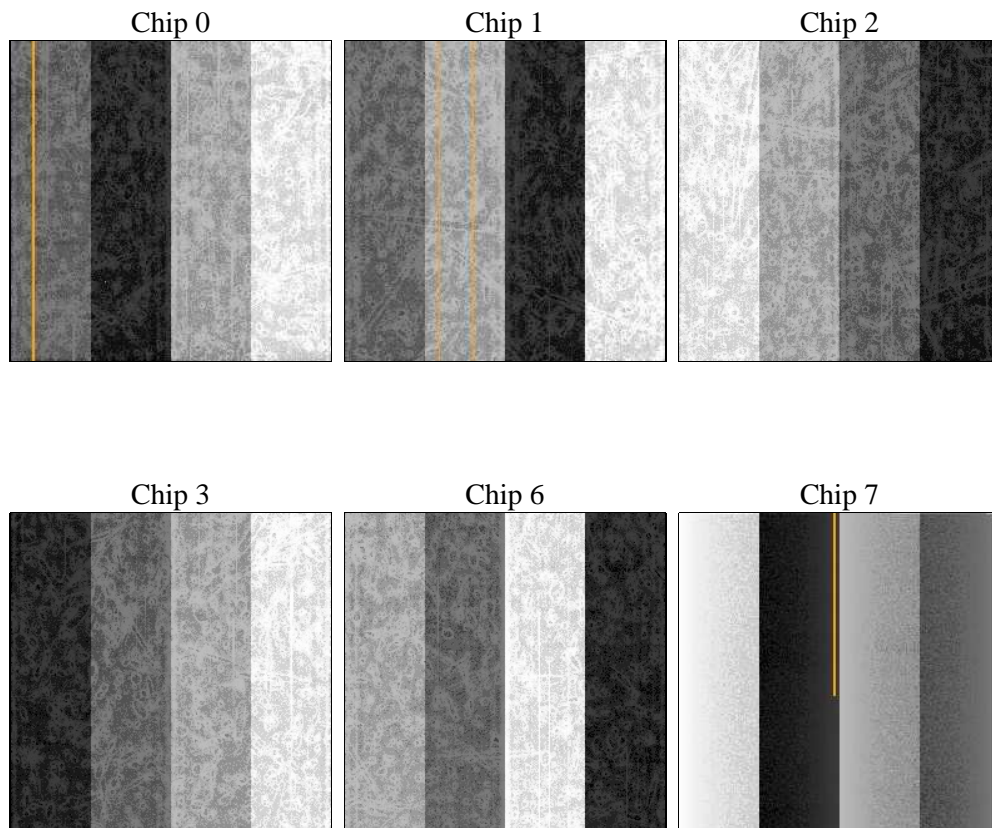
3 OBI Secondary

3.1 OBI

3.1.1 Images



3.1.2 Bias



3.1.3 Parameters

obi_num	0	Obi number	sched_exp_time	5000.000000	[s] Scheduled observation exposure time
ascdsver	8.4.3	Processing system revision	ontime	3954.0259913206	Sum of GTIs [s]
caldsver	4.4.7	 	ontime0	3954.0259905457	Sum of GTIs [s]
date	2012-01-17T14:22:10	Date and time of file creation	ontime1	3954.0260008574	Sum of GTIs [s]
revision	1	Processing version of data	ontime2	3954.0260204077	Sum of GTIs [s]
			ontime3	3954.0259913206	Sum of GTIs [s]
			ontime6	3954.0260215998	Sum of GTIs [s]
			ontime7	3954.0260010958	Sum of GTIs [s]
			l1events	166282	Number of level 1 events

3.1.4 Events

	ccd 0	ccd 1	ccd 2	ccd 3	ccd 6	ccd 7		ccd 0	ccd 1	ccd 2	ccd 3	ccd 6	ccd 7
level 1 events	24146	27057	27517	28604	26631	32327	grade 0 events	2148	3694	3012	3665	1065	1274
rejected events	19936	20495	22406	22698	23605	18146		8%	13%	10%	12%	3%	3%
rejected %	82%	75%	81%	79%	88%	56%	grade 1 events	26	178	55	57	8	50
								0%	0%	0%	0%	0%	0%
							grade 2 events	771	1159	807	856	706	2941
								3%	4%	2%	2%	2%	9%
							grade 3 events	362	441	329	431	285	1215
								1%	1%	1%	1%	1%	3%
							grade 4 events	315	449	353	351	269	1146
								1%	1%	1%	1%	1%	3%
							grade 5 events	1045	1301	1062	1298	1222	3296
								4%	4%	3%	4%	4%	10%
							grade 6 events	617	830	624	613	702	7636
								2%	3%	2%	2%	2%	23%
							grade 7 events	18862	19005	21275	21333	22374	14769
								78%	70%	77%	74%	84%	45%

A Summary

A.1 Status

V&V Scientist	Beth Sundheim
V&V Date (YYYY-MM-DD)	2012.01.17
V&V Edition	1
V&V Disposition and Status	OK
V&V Charge Time	4.87616090798377

A.2 Comments

Joint proposal: HST