

V&V Reference Report

L2 ASCDS Version : 8.4.3

Observation 13561 - L2 Version 2
Chandra X-Ray Center

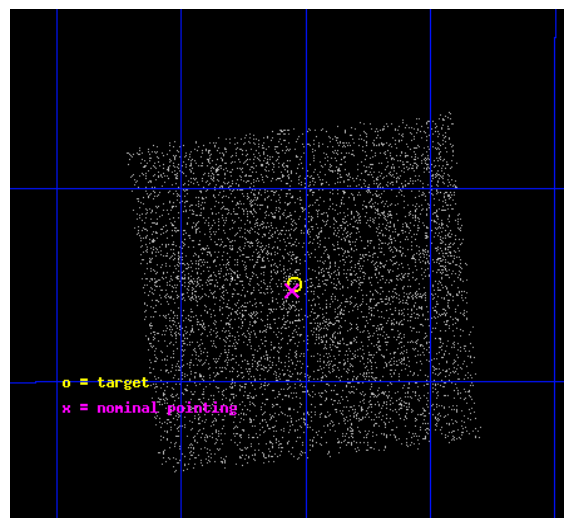
L2 Processing Date : Feb 25 2012

Contents

1	Front	2
2	OBI	3
2.1	OBI	3
2.1.1	Images	3
2.1.2	Bias	3
2.1.3	Parameters	4
2.1.4	Events	4
2.2	Compared Parameters	5
2.3	Aspect	6
2.4	Star Slots	9
2.4.1	Slot 3	9
2.4.2	Slot 4	10
2.4.3	Slot 5	11
2.4.4	Slot 6	12
2.4.5	Slot 7	13
2.5	FID Slots	14
2.5.1	Slot 0	14
2.5.2	Slot 1	15
2.5.3	Slot 2	16
A	Summary	17
A.1	Status	17
A.2	Comments	17

1 Front

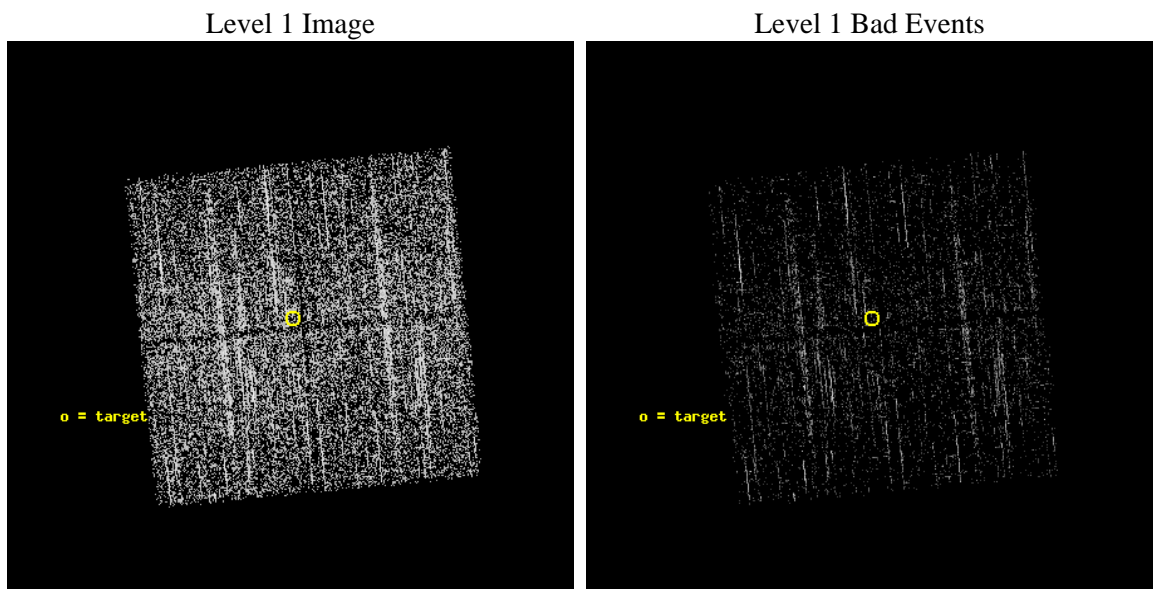
seq_num	401337	Sequence number
obs_id	13561	Observation id
title	Completing the Galactic Bulge Survey: categorizing the plethora of faint X-ray sources in the Galactic Bulge	Proposal title
observer	dr P Jonker	Principal investigator
object	GBS13-4	Source name
dtcycle	0	
cycle	P	events from which exps? Prim/Second/Both
ra_targ	268.386723	Observer's specified target RA [deg]
dec_targ	-29.74978	Observer's specified target Dec [deg]
ra_nom	268.38897898912	Nominal RA [deg]
dec_nom	-29.754944705086	Nominal Dec [deg]
roll_nom	264.41977566687	Nominal Roll [deg]
revision	2	Processing version of data
ontime	1973.2827304006	Sum of GTIs [s]
livetime	1947.5003388183	Livetime [s]
ontime0	1973.1595805287	Sum of GTIs [s]
ontime1	1963.7777594328	Sum of GTIs [s]
ontime2	1973.2416903973	Sum of GTIs [s]
ontime3	1973.2827304006	Sum of GTIs [s]
l2events	6815	Number of level 2 events



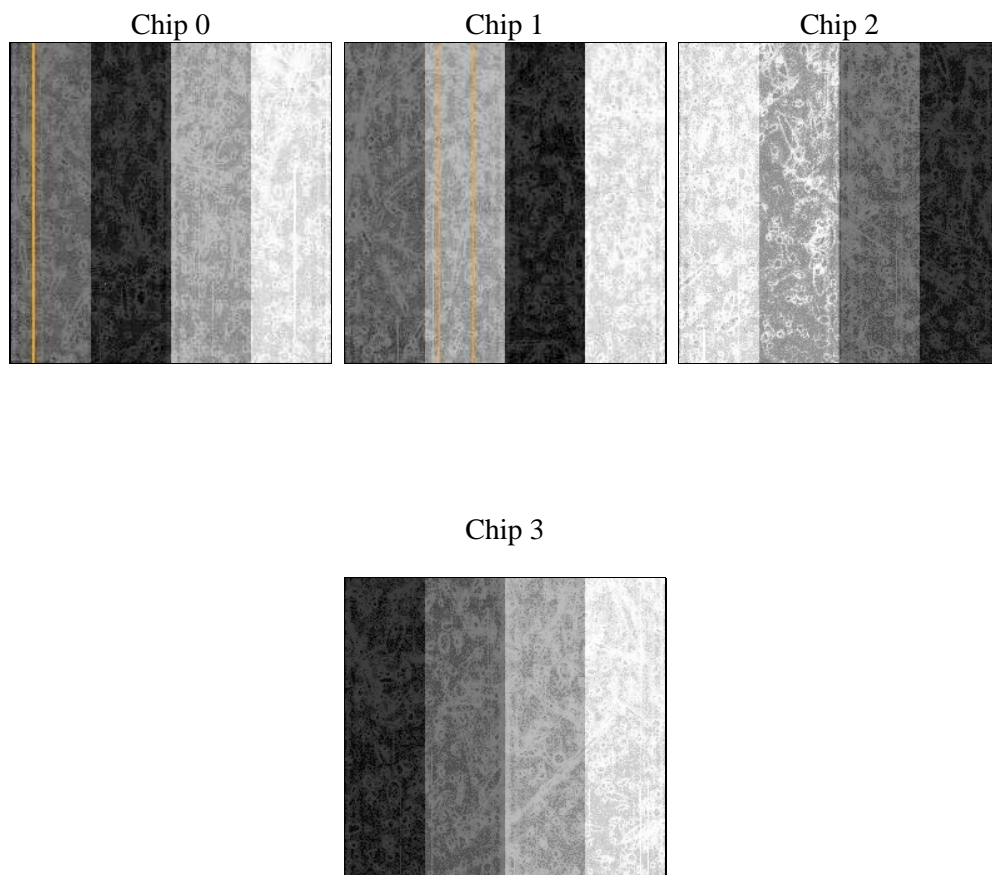
2 OBI

2.1 OBI

2.1.1 Images



2.1.2 Bias



2.1.3 Parameters

obi_num	0	Obi number	sched_exp_time	2180.000000	[s] Scheduled observation exposure time
ascdsver	8.4.3	Processing system revision	ontime	1973.2827304006	Sum of GTIs [s]
caldsver	4.4.8	 	ontime0	1973.1595805287	Sum of GTIs [s]
date	2012-02-26T01:06:02	Date and time of file creation	ontime1	1963.7777594328	Sum of GTIs [s]
revision	2	Processing version of data	ontime2	1973.2416903973	Sum of GTIs [s]
			ontime3	1973.2827304006	Sum of GTIs [s]
			l1events	49623	Number of level 1 events

2.1.4 Events

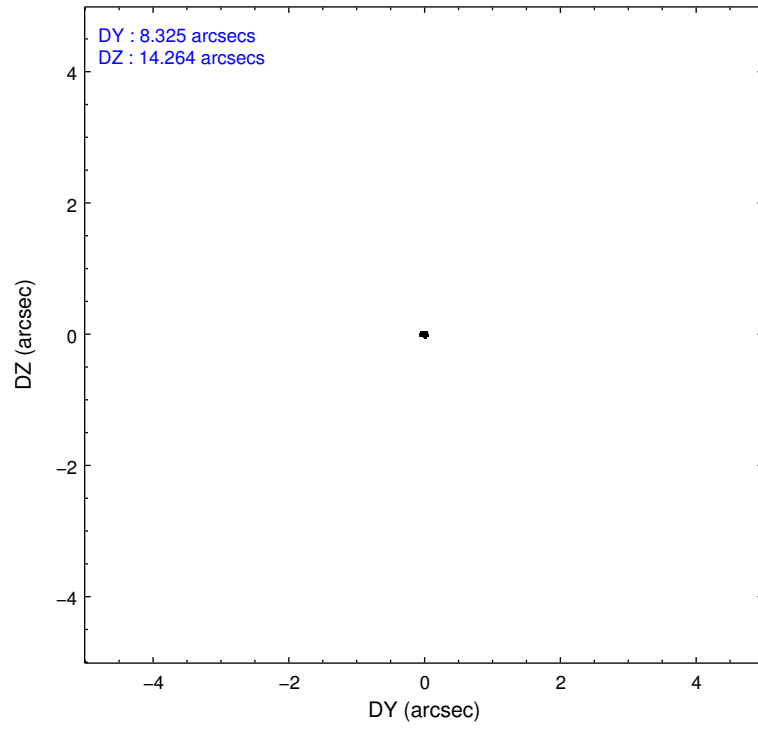
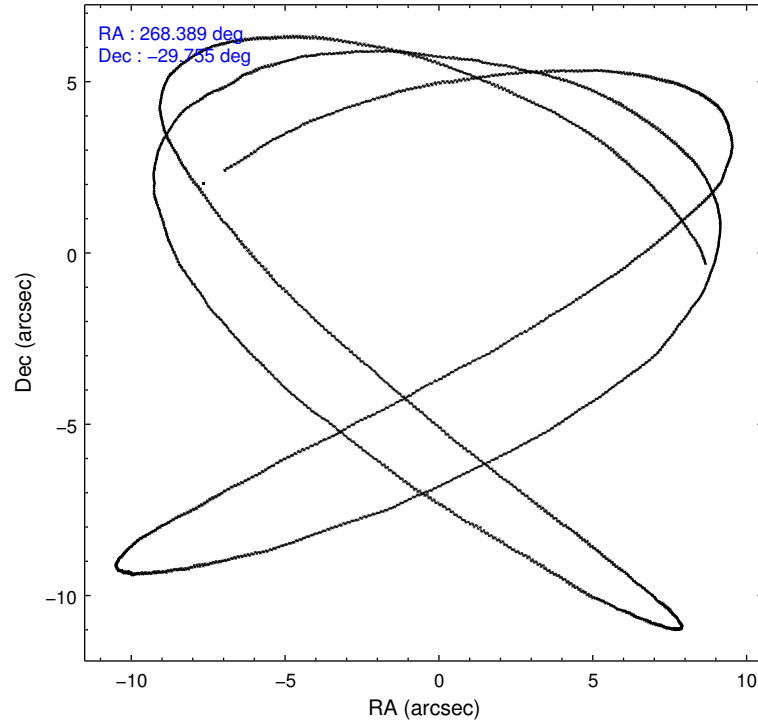
	ccd 0	ccd 1	ccd 2	ccd 3
level 1 events	12022	11700	13218	12683
rejected events	10116	9581	11324	10695
rejected %	84%	81%	85%	84%

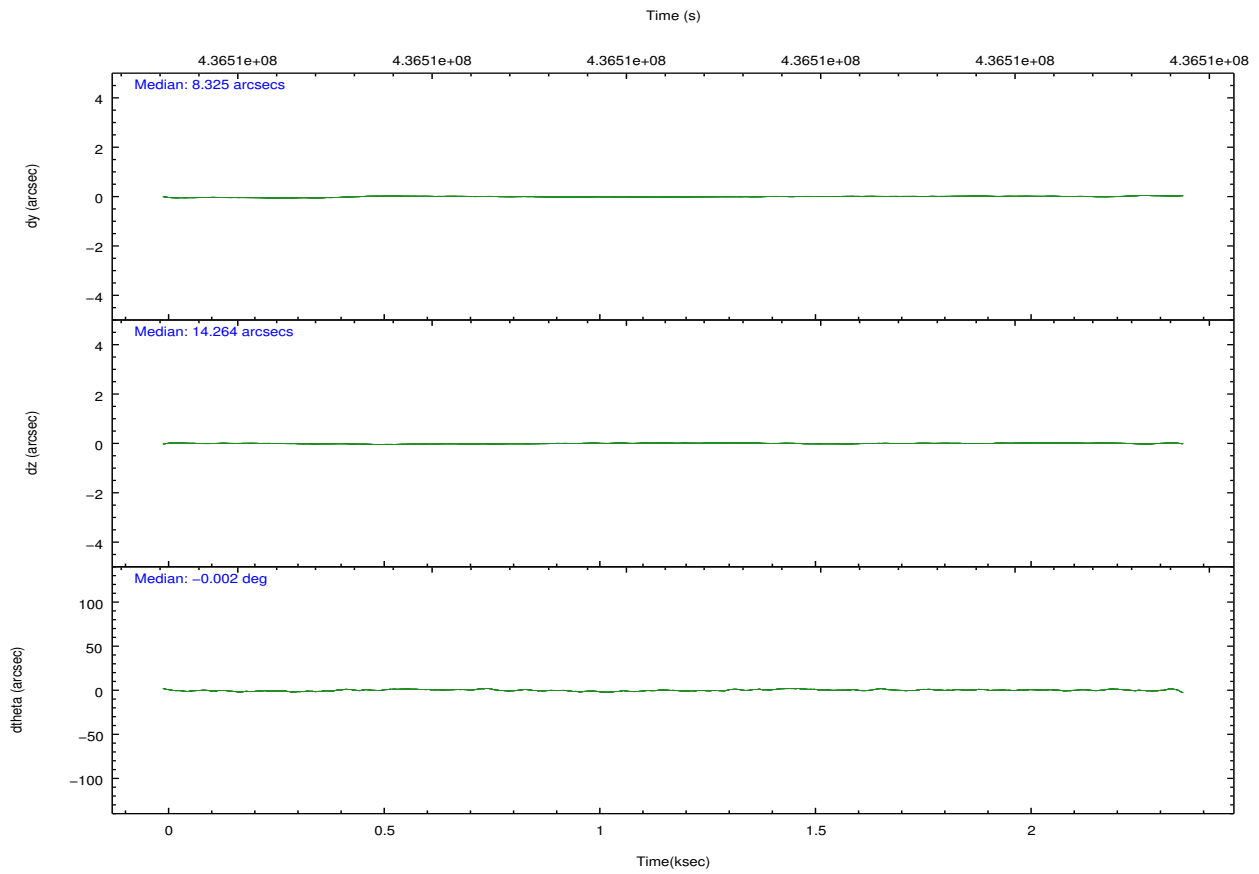
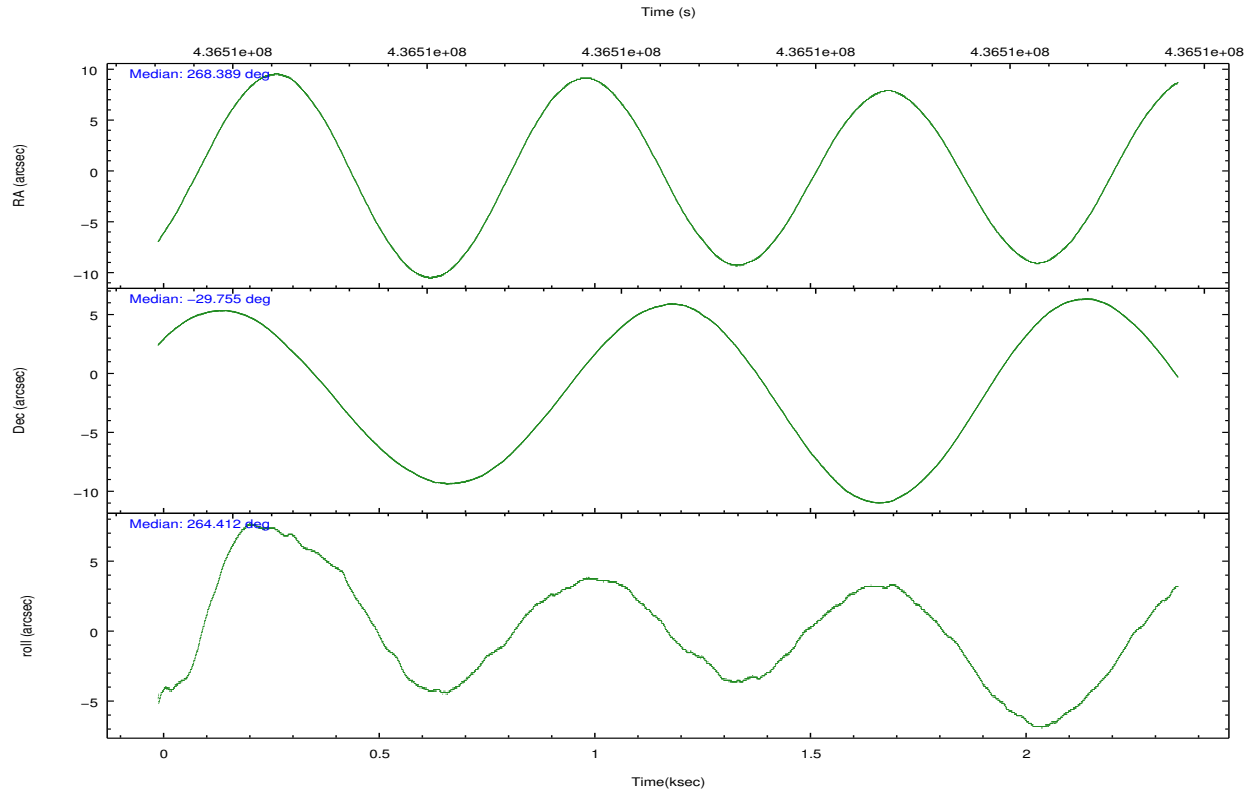
	ccd 0	ccd 1	ccd 2	ccd 3
grade 0 events	924	972	904	1009
	7%	8%	6%	7%
grade 1 events	12	9	13	8
	0%	0%	0%	0%
grade 2 events	384	445	399	359
	3%	3%	3%	2%
grade 3 events	144	153	170	172
	1%	1%	1%	1%
grade 4 events	164	188	162	163
	1%	1%	1%	1%
grade 5 events	594	527	508	561
	4%	4%	3%	4%
grade 6 events	297	363	273	287
	2%	3%	2%	2%
grade 7 events	9503	9043	10789	10124
	79%	77%	81%	79%

2.2 Compared Parameters

Parameter	Planned	Actual	Parameter	Planned	Actual
Instrument	ACIS	ACIS	Obspar format version number	7	7
Detector	ACIS-0123	ACIS-0123	Obspar file type	PREDICTED	ACTUAL
Grating	NONE	NONE	Obspar update status	NONE	UPDATED
Data mode	VFAINT	VFAINT	Number of optional ACIS chips dropped	0	0
Observation mode	POINTING	POINTING	On-chip summing requested	N	N
[deg] Pointing RA	268.375695	268.3889789891202	Subarray requested	NONE	NONE
[deg] Pointing Dec	-29.730215	-29.75494470508559	Alternating exposures requested	N	N
[deg] Pointing Roll	264.204521	264.4197756668699	[s] Primary exposure time	0.000000	3.1
[mm] SIM focus pos	-0.782348	-0.7809083437167272			
[mm] SIM defocus	0	0.001439871863259334			
[mm] SIM translation stage pos	-233.592463	-233.5874344608287			
[mm] SIM translation stage offset	0	-0.005018542100998502			
[s] Observation start time (MET)	436508109.184000	436507732.89371			
Observation start date	2011-11-01T04:14:03	2011-11-01T04:08:52			
[s] Observation end time (MET)	436510289.184000	436510423.00635			
Observation end date	2011-11-01T04:50:23	2011-11-01T04:53:43			
Read mode	TIMED	TIMED			

2.3 Aspect



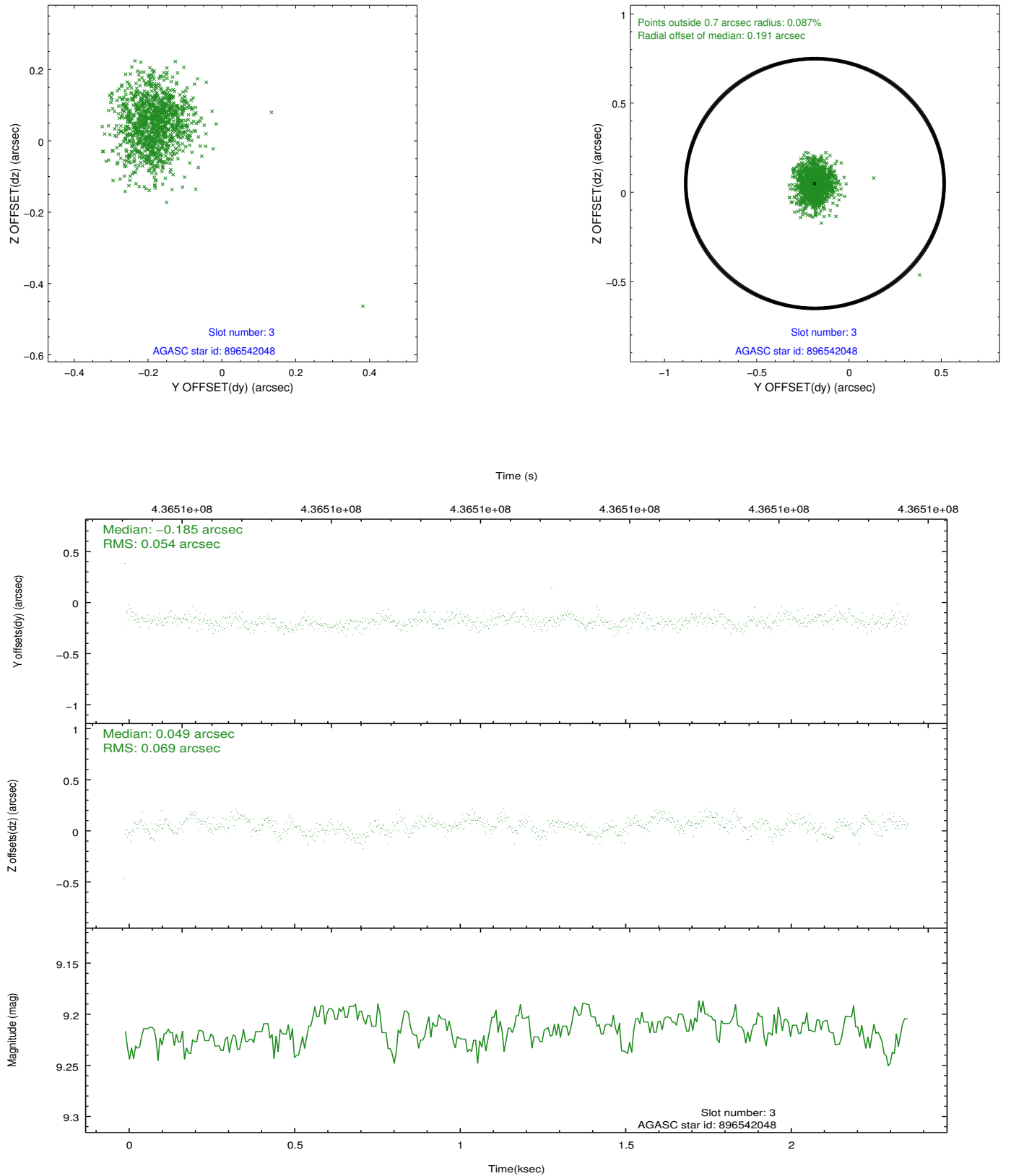


Slot Statistics

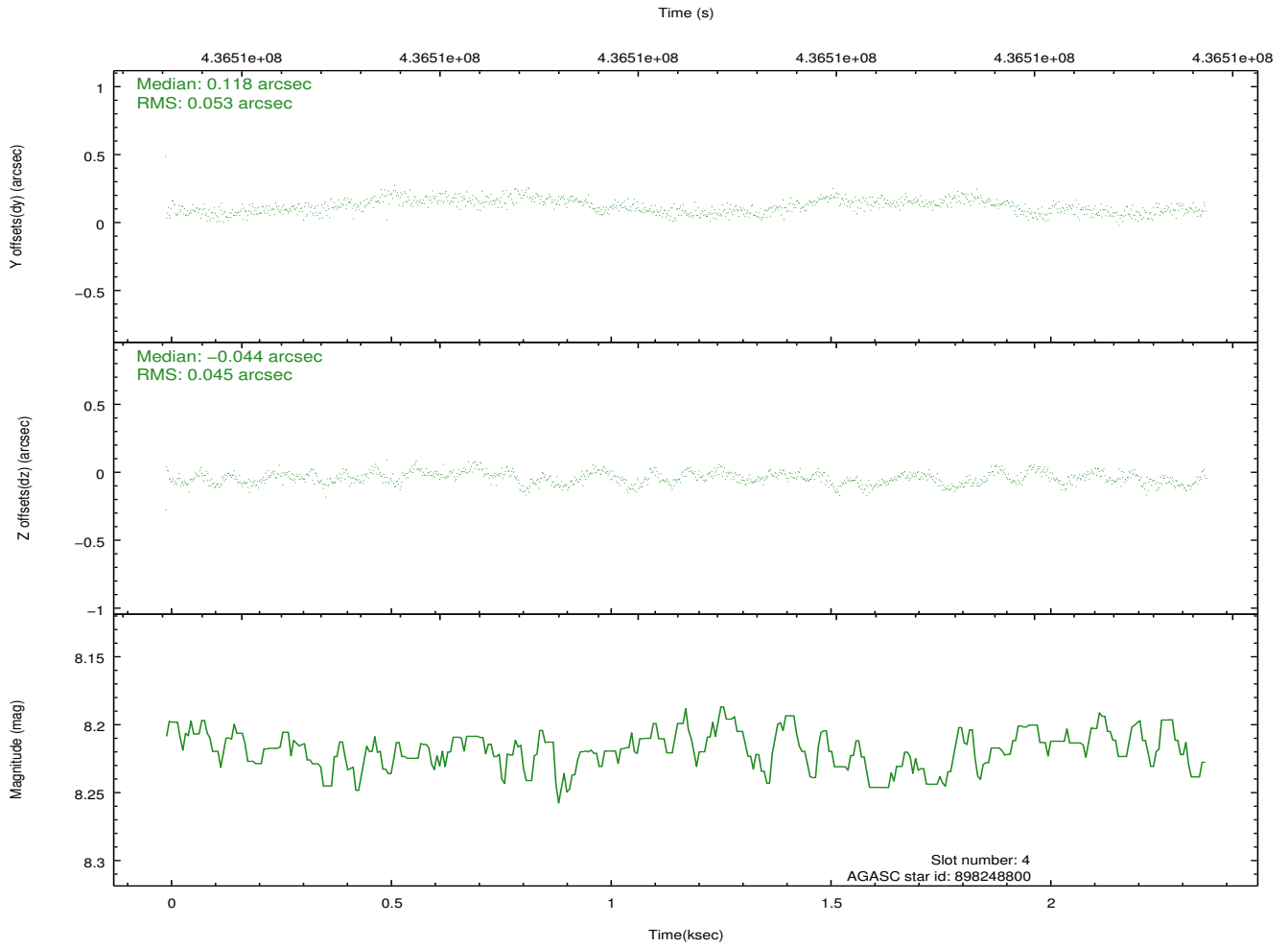
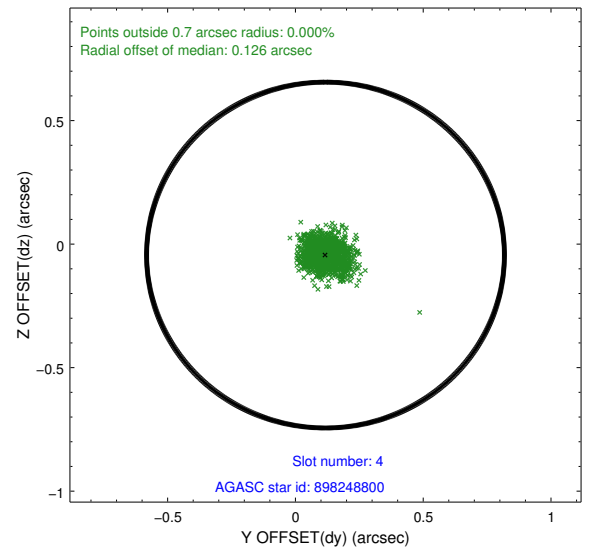
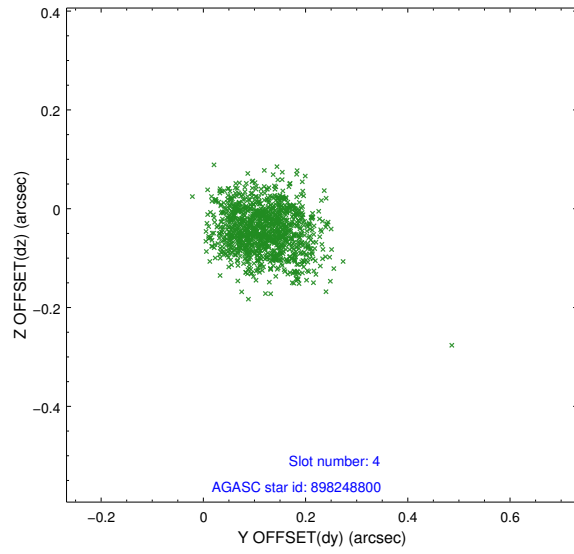
slot	status	id	mag	n_pts	med_dy	med_dz	dr1	dr2	ra	dec	mean_y	mean_z
0	FID	ACIS-I-2	6.92	577	-0.093	-0.108	0.018	0.027	0.000000	0.000000	-762.95	-844.31
1	FID	ACIS-I-4	6.95	577	0.244	0.085	0.009	0.019	0.000000	0.000000	2150.21	1060.64
2	FID	ACIS-I-5	7.00	577	-0.250	0.091	0.014	0.024	0.000000	0.000000	-1813.39	1061.66
3	GUIDE	896542048	9.22	1153	-0.185	0.049	0.090	0.148	267.742937	-29.132026	-1934.82	-2196.90
4	GUIDE	898248800	8.22	1155	0.118	-0.044	0.074	0.115	267.977609	-29.931731	849.22	-1164.07
5	GUIDE	898250872	7.07	1155	0.114	-0.141	0.043	0.068	268.026303	-29.632040	-237.27	-1124.51
6	GUIDE	967050920	7.62	1155	-0.012	0.150	0.060	0.094	268.870727	-30.021750	892.56	1640.67
7	GUIDE	898264424	8.77	1151	-0.035	-0.019	0.087	0.140	269.094392	-29.865118	265.34	2283.33

2.4 Star Slots

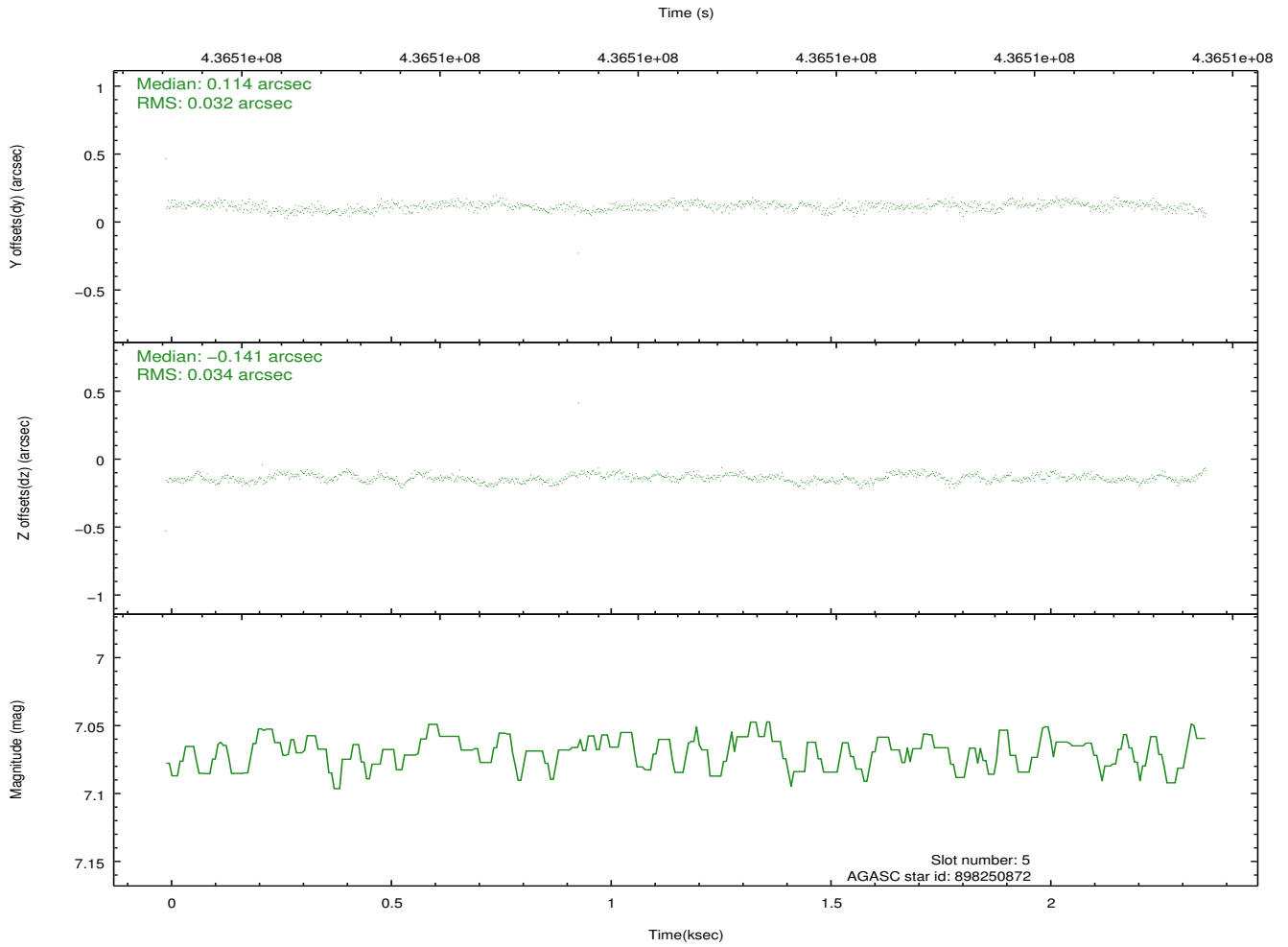
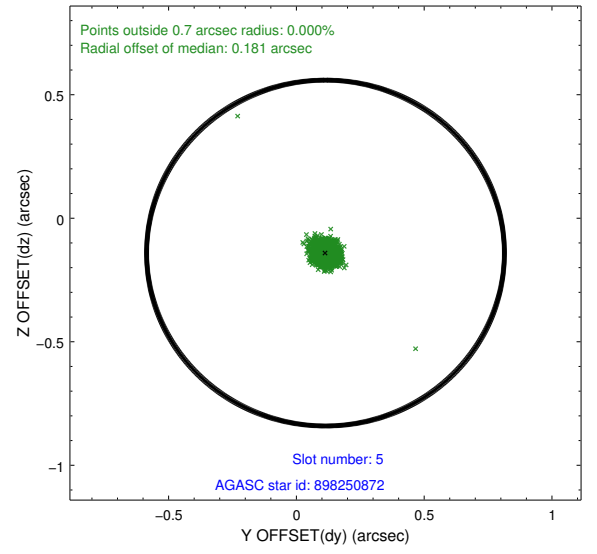
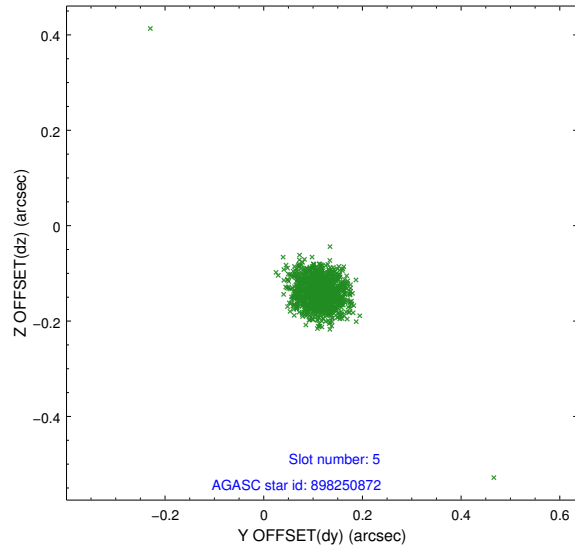
2.4.1 Slot 3



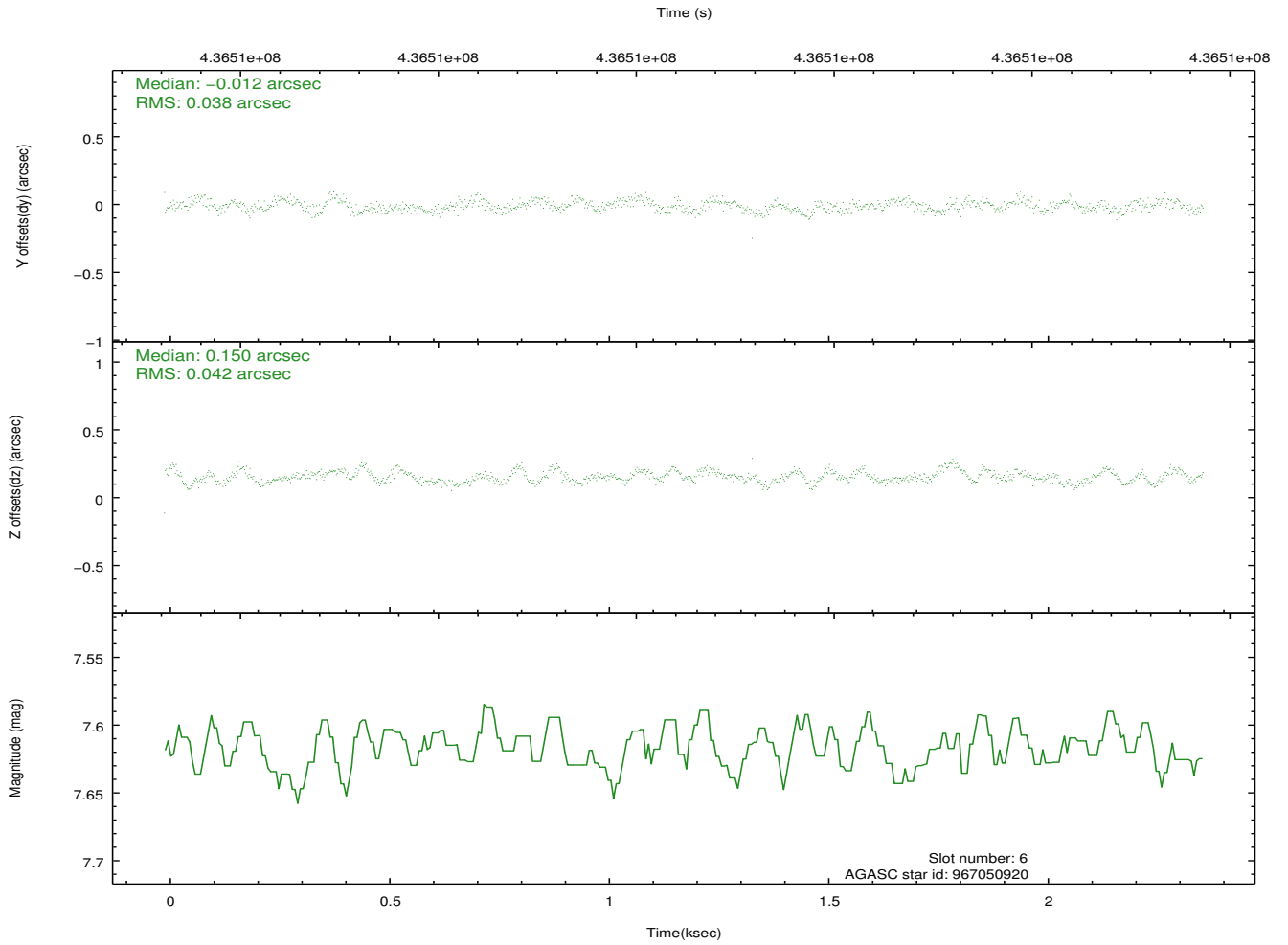
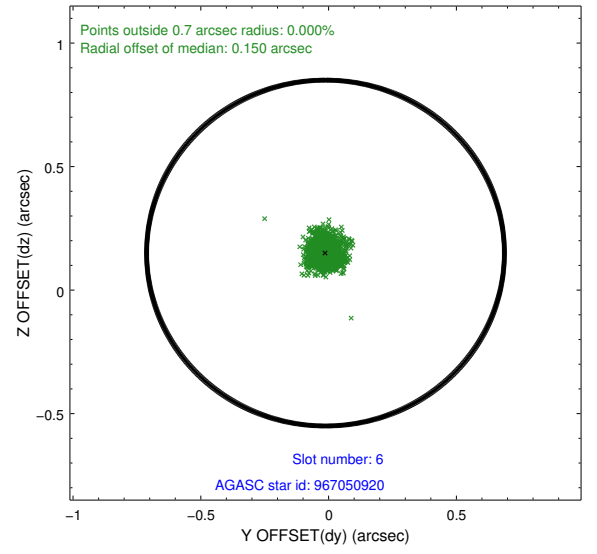
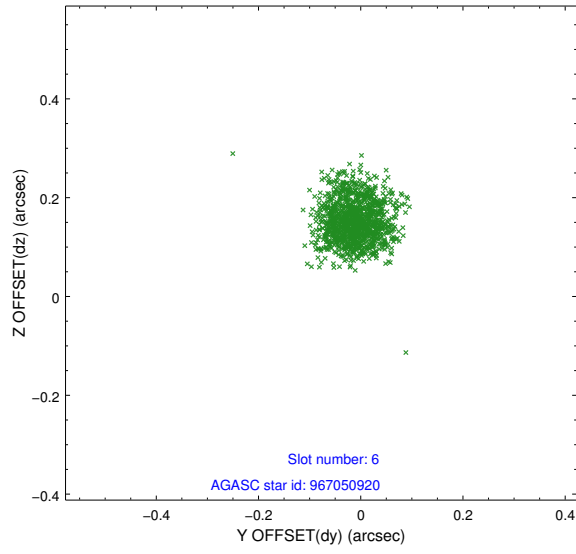
2.4.2 Slot 4



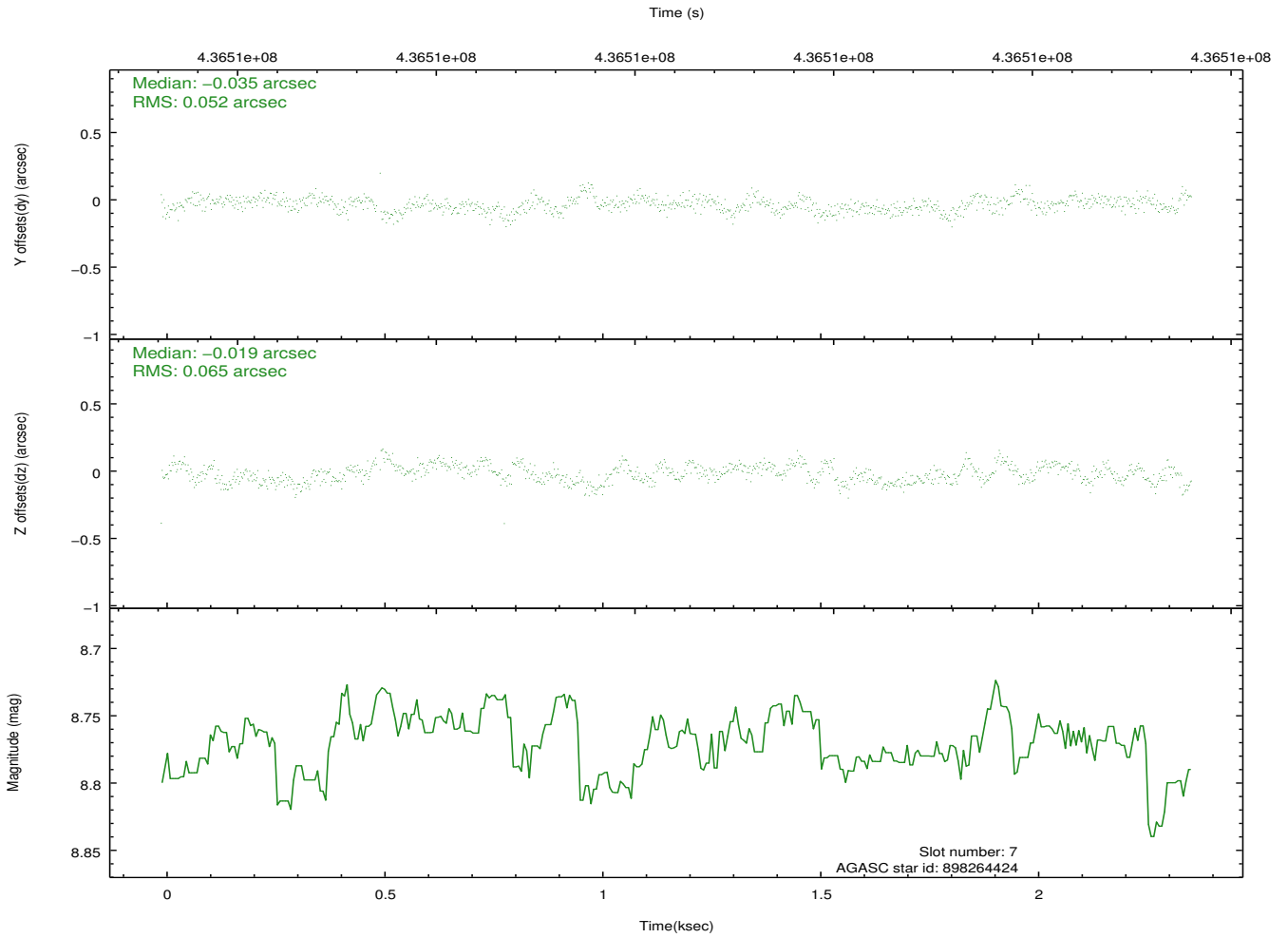
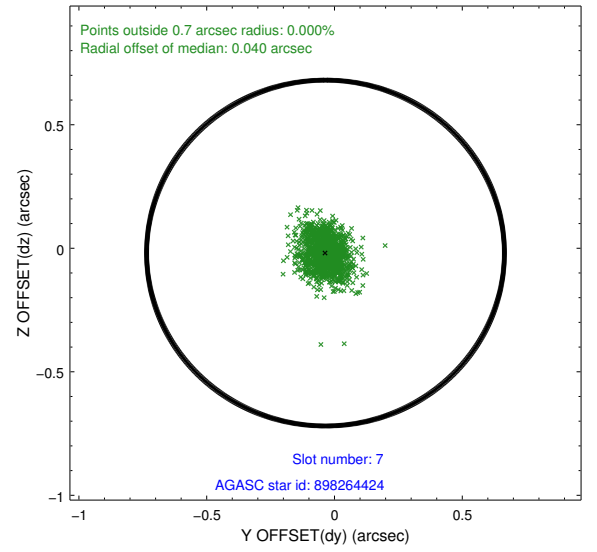
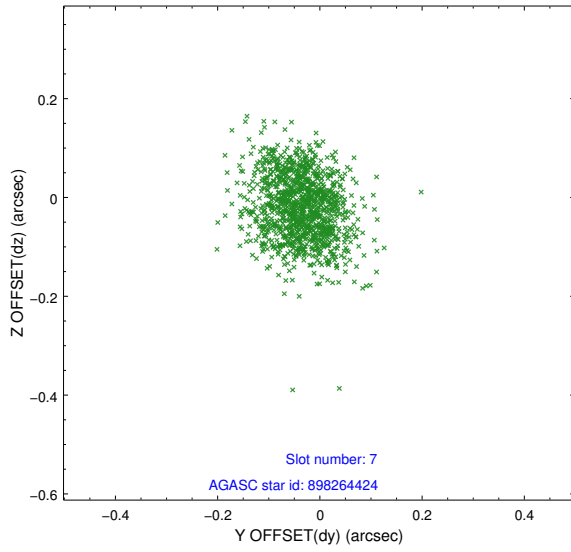
2.4.3 Slot 5



2.4.4 Slot 6

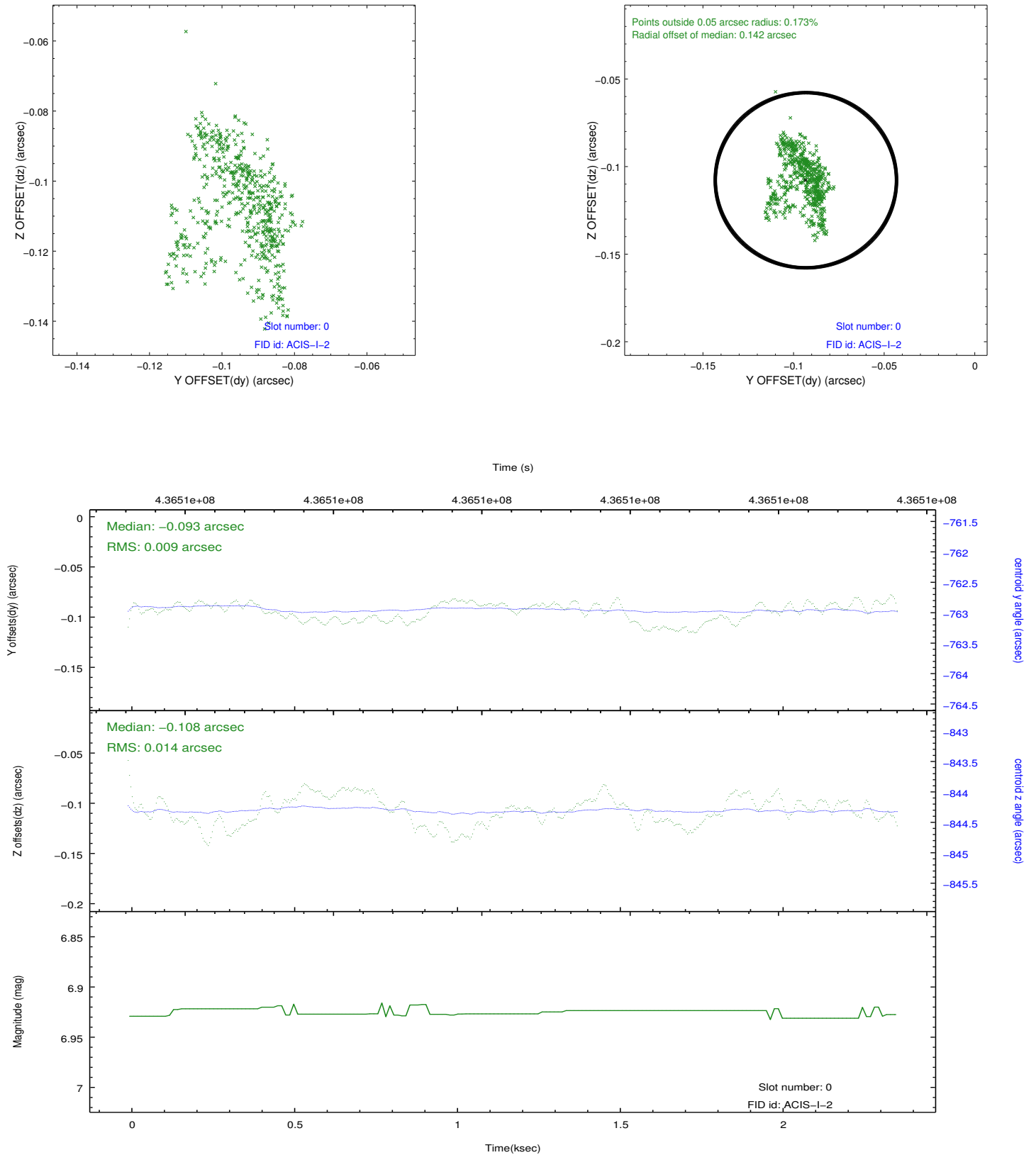


2.4.5 Slot 7

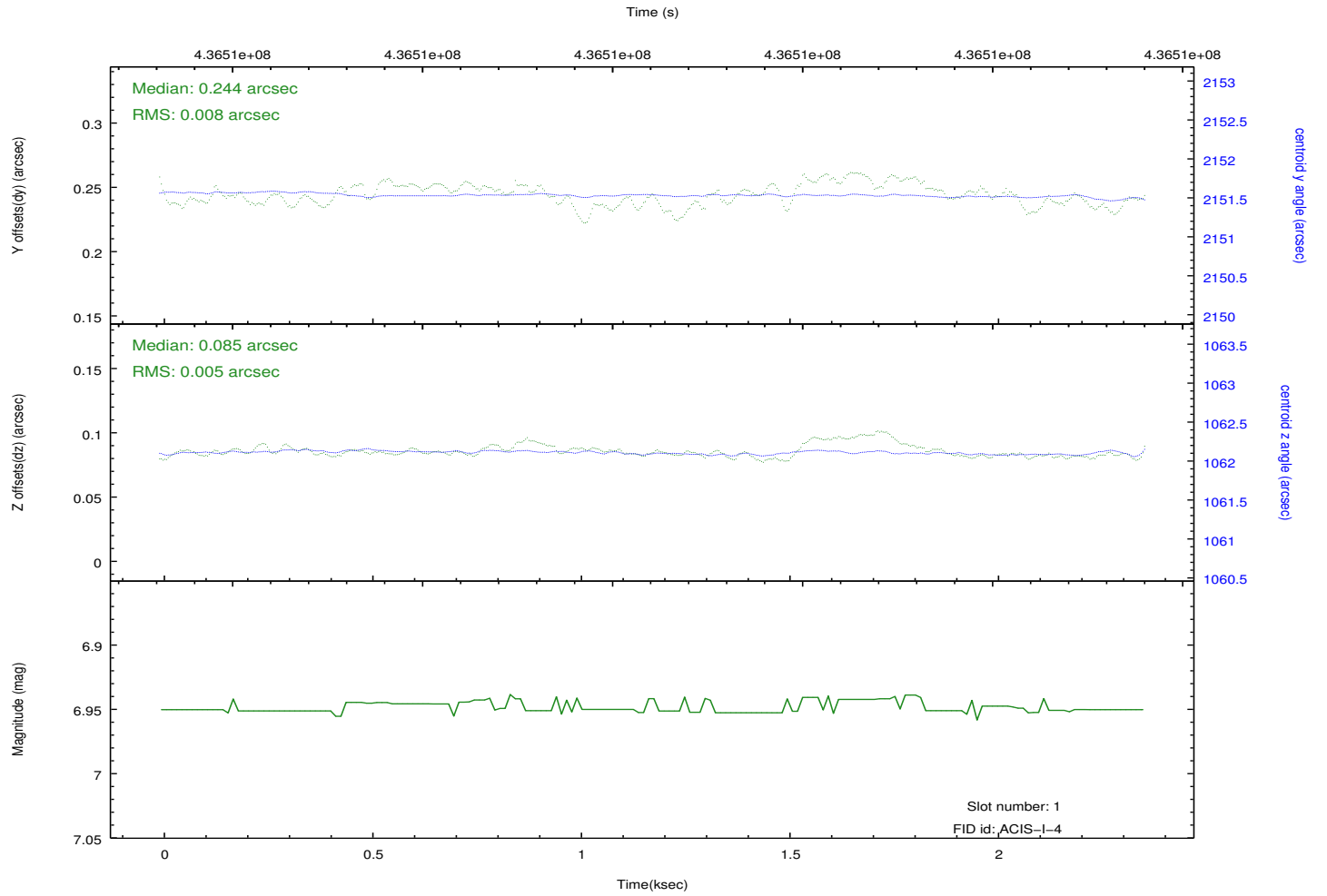
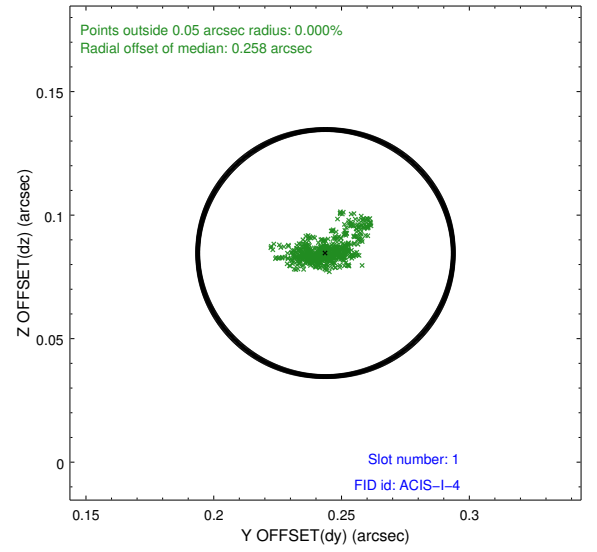
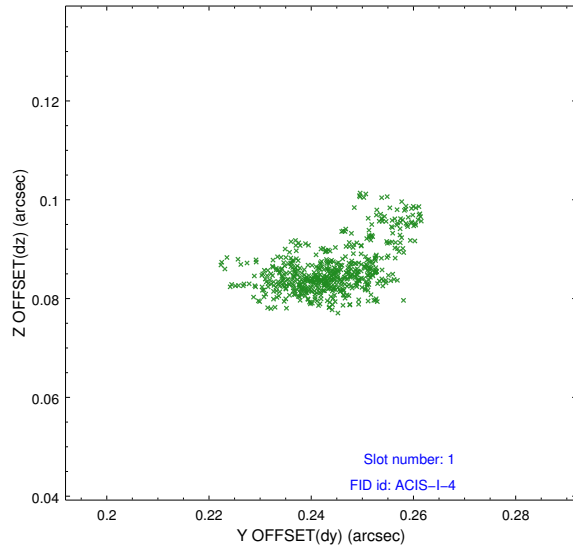


2.5 FID Slots

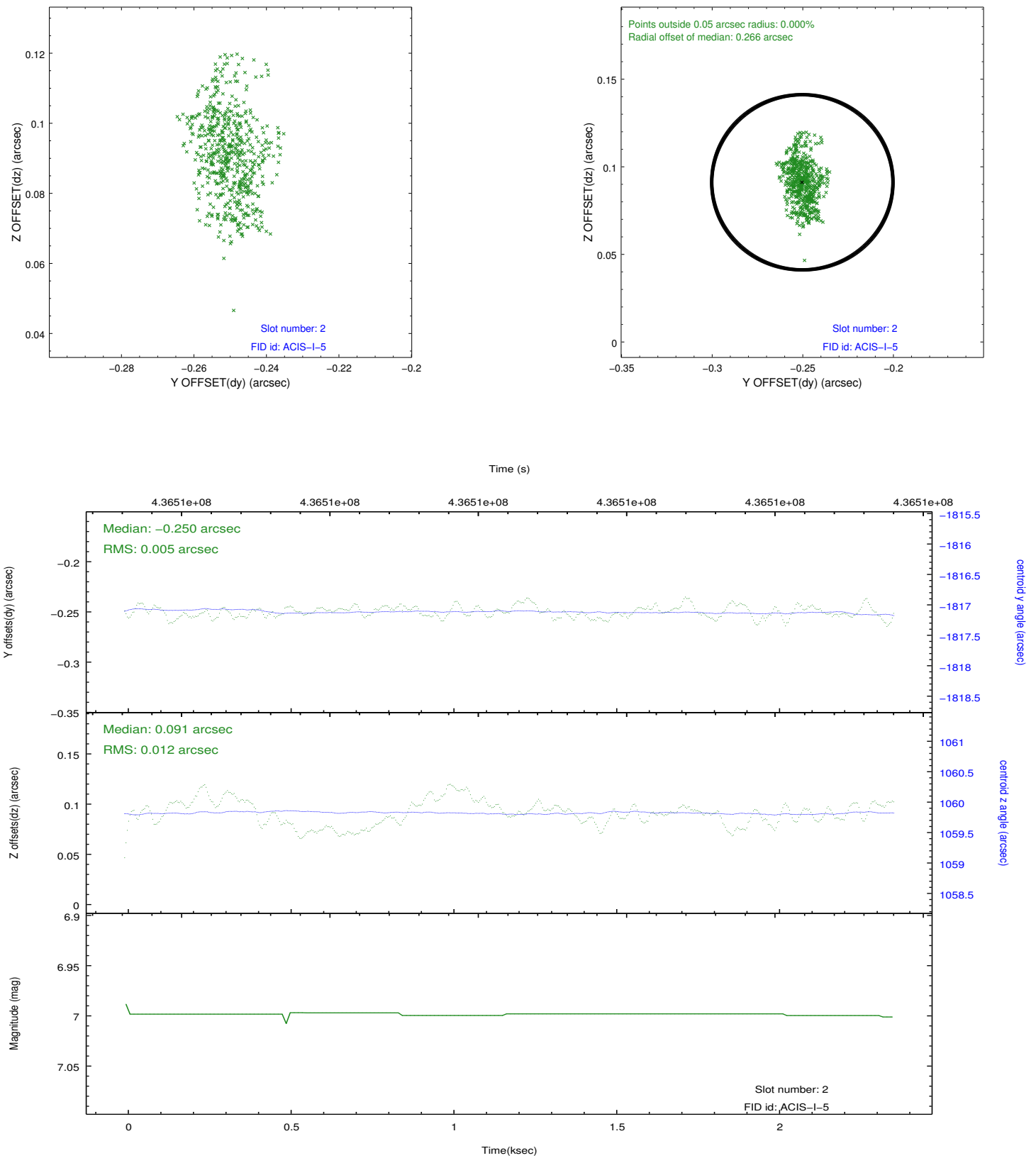
2.5.1 Slot 0



2.5.2 Slot 1



2.5.3 Slot 2



A Summary

A.1 Status

V&V Scientist	Jen Lauer
V&V Date (YYYY-MM-DD)	2012.02.27
V&V Edition	1
V&V Disposition and Status	OK
V&V Charge Time	1.9732827269435

A.2 Comments

Joint Proposal: NOAO