

V&V Reference Report

L2 ASCDS Version : 8.4.3

Observation 13545 - L2 Version 2
Chandra X-Ray Center

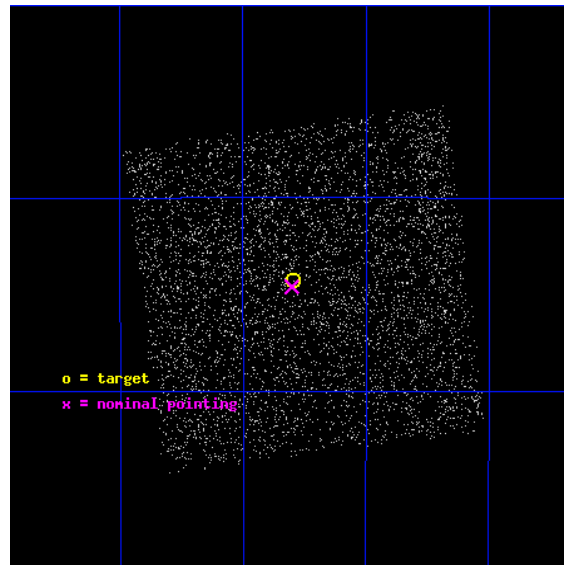
L2 Processing Date : Feb 25 2012

Contents

1	Front	2
2	OBI	3
2.1	OBI	3
2.1.1	Images	3
2.1.2	Bias	3
2.1.3	Parameters	4
2.1.4	Events	4
2.2	Compared Parameters	5
2.3	Aspect	6
2.4	Star Slots	9
2.4.1	Slot 3	9
2.4.2	Slot 4	10
2.4.3	Slot 5	11
2.4.4	Slot 6	12
2.4.5	Slot 7	13
2.5	FID Slots	14
2.5.1	Slot 0	14
2.5.2	Slot 1	15
2.5.3	Slot 2	16
A	Summary	17
A.1	Status	17
A.2	Comments	17

1 Front

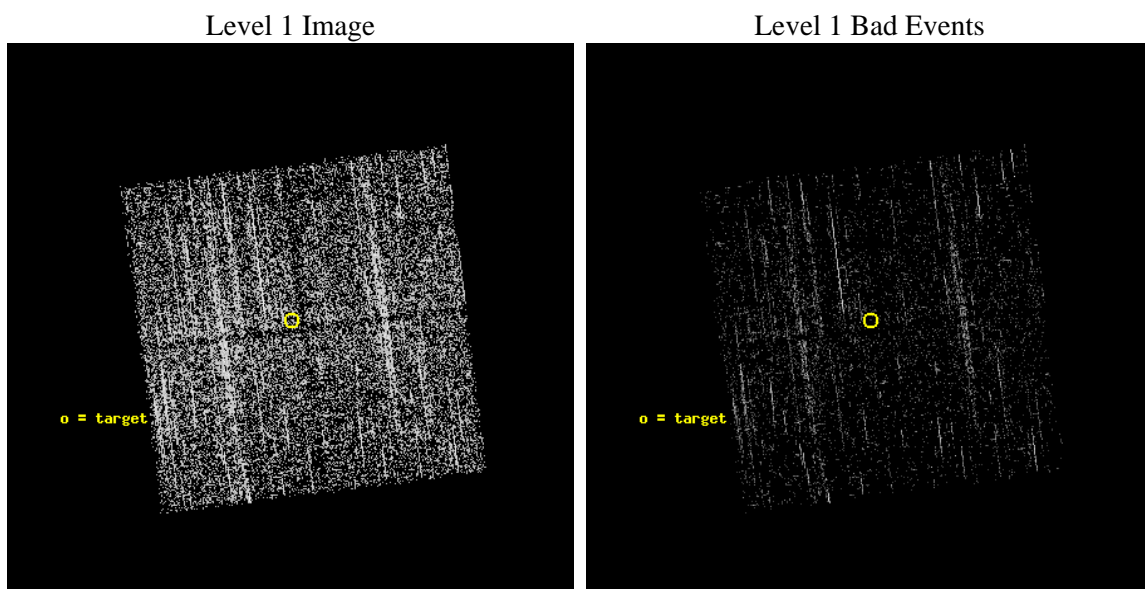
seq_num	401321	Sequence number
obs_id	13545	Observation id
title	Completing the Galactic Bulge Survey: categorizing the plethora of faint X-ray sources in the Galactic Bulge	Proposal title
observer	dr P Jonker	Principal investigator
object	GBS13-2	Source name
dtcycle	0	
cycle	P	events from which exps? Prim/Second/Both
ra_targ	267.323488	Observer's specified target RA [deg]
dec_targ	-30.904826	Observer's specified target Dec [deg]
ra_nom	267.32538276796	Nominal RA [deg]
dec_nom	-30.91002942205	Nominal Dec [deg]
roll_nom	262.72400435934	Nominal Roll [deg]
revision	2	Processing version of data
ontime	1973.7238255143	Sum of GTIs [s]
livetime	1947.9356706996	Livetime [s]
ontime0	1973.6007055044	Sum of GTIs [s]
ontime1	1973.6417455077	Sum of GTIs [s]
ontime2	1973.682785511	Sum of GTIs [s]
ontime3	1973.7238255143	Sum of GTIs [s]
l2events	5185	Number of level 2 events



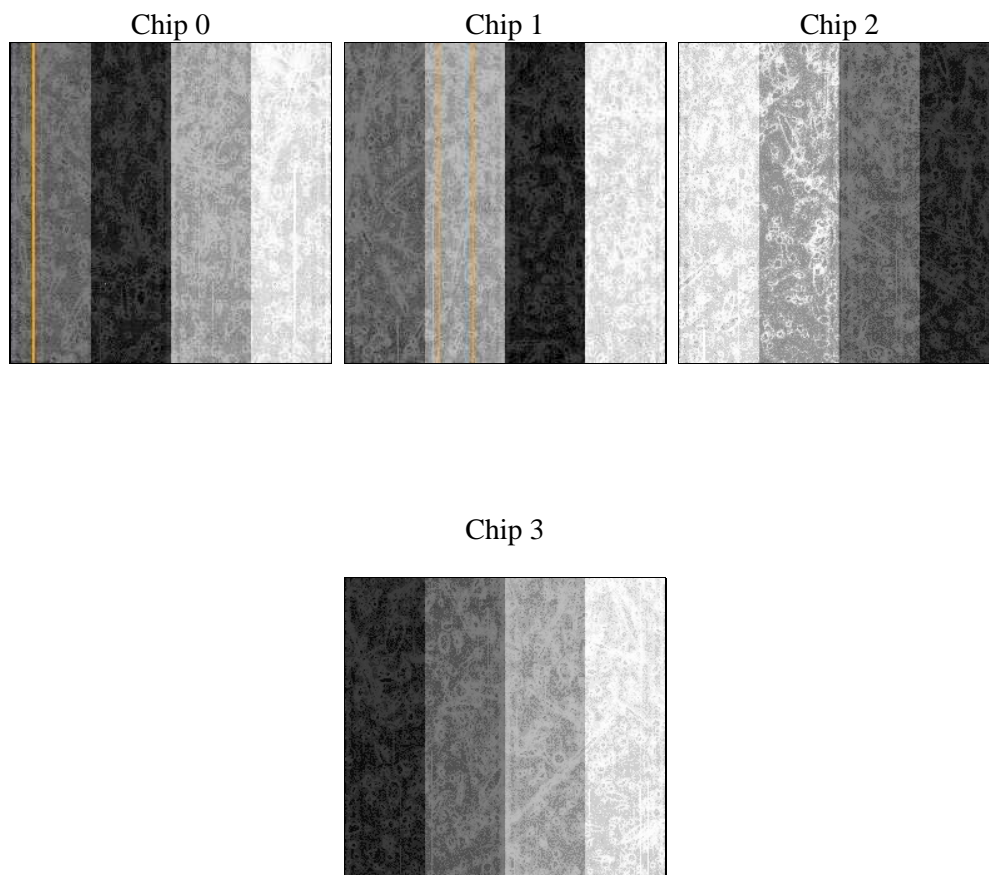
2 OBI

2.1 OBI

2.1.1 Images



2.1.2 Bias



2.1.3 Parameters

obi_num	0	Obi number	sched_exp_time	2180.000000	[s] Scheduled observation exposure time
ascdsver	8.4.3	Processing system revision	ontime	1973.7238255143	Sum of GTIs [s]
caldsver	4.4.8	 	ontime0	1973.6007055044	Sum of GTIs [s]
date	2012-02-26T01:13:07	Date and time of file creation	ontime1	1973.6417455077	Sum of GTIs [s]
revision	2	Processing version of data	ontime2	1973.682785511	Sum of GTIs [s]
			ontime3	1973.7238255143	Sum of GTIs [s]
			l1events	44653	Number of level 1 events

2.1.4 Events

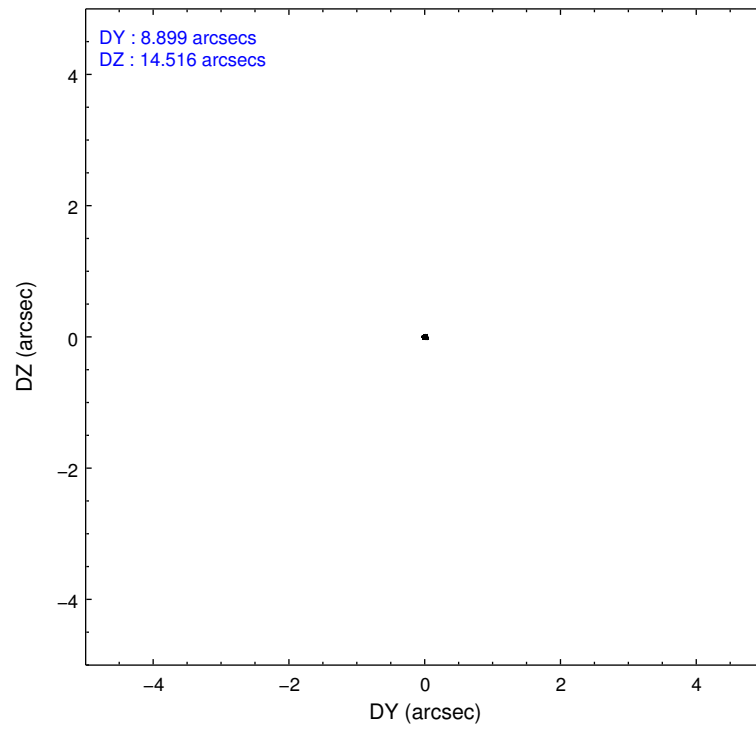
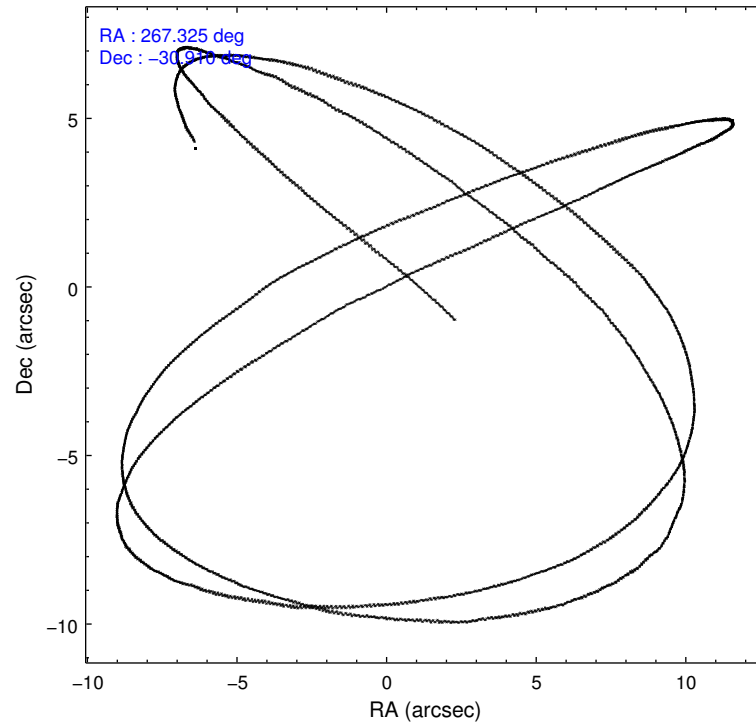
	ccd 0	ccd 1	ccd 2	ccd 3
level 1 events	9945	10625	11929	12154
rejected events	8461	9005	10405	10663
rejected %	85%	84%	87%	87%

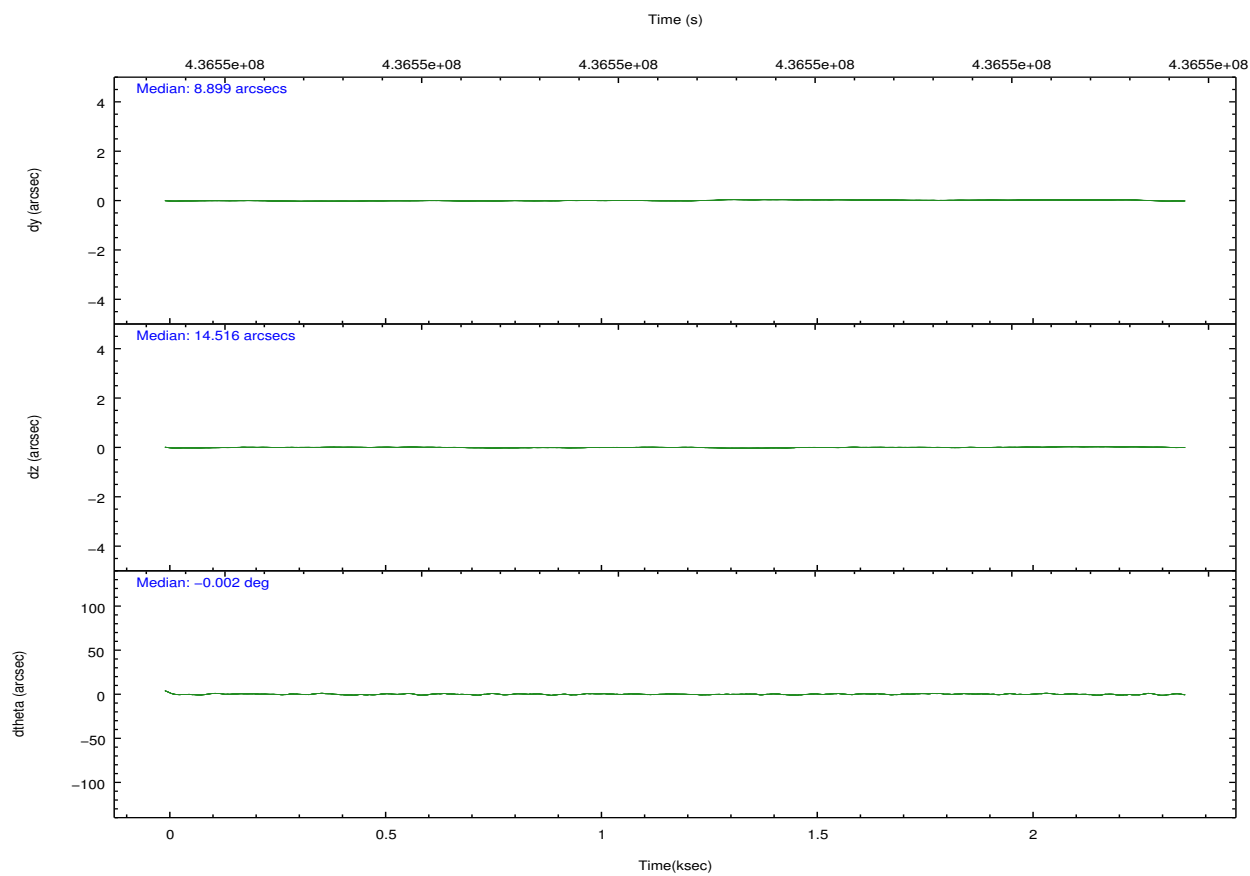
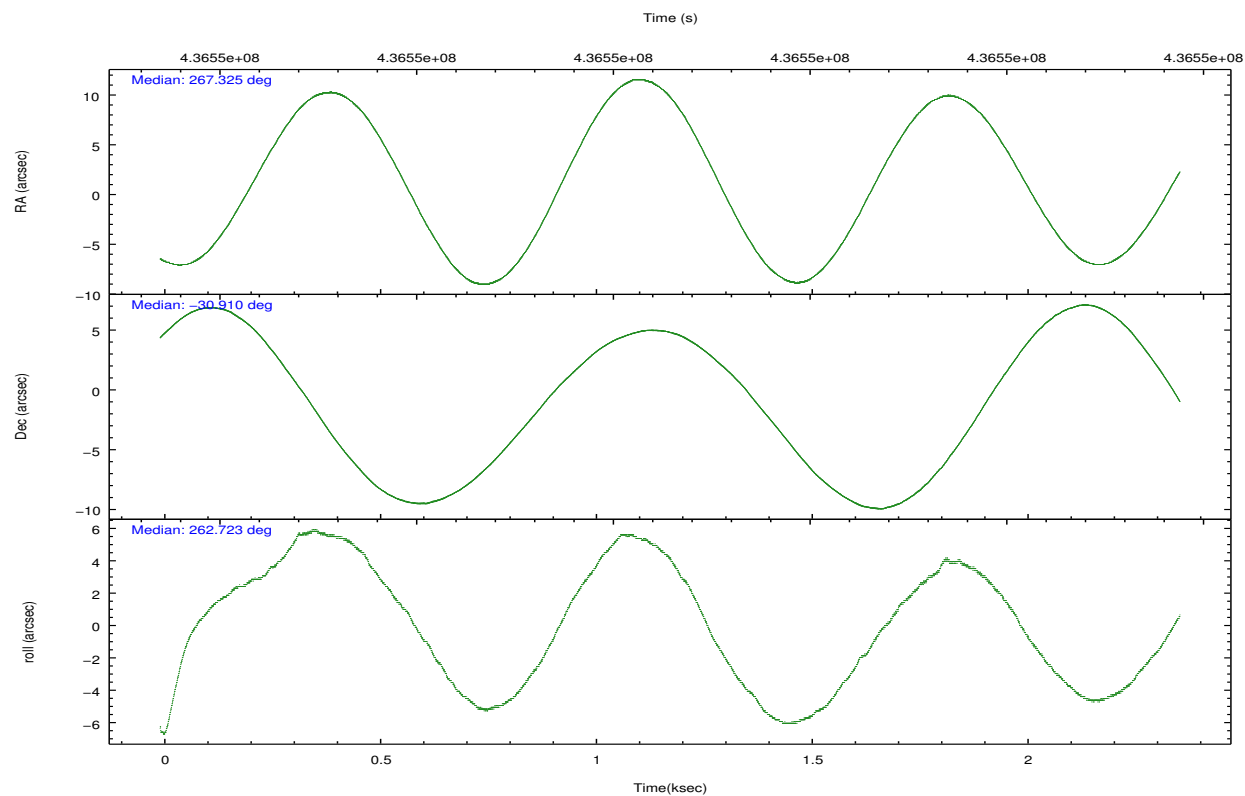
	ccd 0	ccd 1	ccd 2	ccd 3
grade 0 events	605	685	614	659
	6%	6%	5%	5%
grade 1 events	5	5	4	17
	0%	0%	0%	0%
grade 2 events	321	333	321	311
	3%	3%	2%	2%
grade 3 events	156	148	151	139
	1%	1%	1%	1%
grade 4 events	139	135	146	140
	1%	1%	1%	1%
grade 5 events	490	547	494	595
	4%	5%	4%	4%
grade 6 events	268	323	295	249
	2%	3%	2%	2%
grade 7 events	7961	8449	9904	10044
	80%	79%	83%	82%

2.2 Compared Parameters

Parameter	Planned	Actual	Parameter	Planned	Actual
Instrument	ACIS	ACIS	Obspar format version number	7	7
Detector	ACIS-0123	ACIS-0123	Obspar file type	PREDICTED	ACTUAL
Grating	NONE	NONE	Obspar update status	NONE	UPDATED
Data mode	VFAINT	VFAINT	Number of optional ACIS chips dropped	0	0
Observation mode	POINTING	POINTING	On-chip summing requested	N	N
[deg] Pointing RA	267.313013	267.3253827679636	Subarray requested	NONE	NONE
[deg] Pointing Dec	-30.884987	-30.9100294220503	Alternating exposures requested	N	N
[deg] Pointing Roll	262.508999	262.724004359338	[s] Primary exposure time	0.000000	3.1
[mm] SIM focus pos	-0.782348	-0.7809083437167272			
[mm] SIM defocus	0	0.001439871863259334			
[mm] SIM translation stage pos	-233.592463	-233.5874344608287			
[mm] SIM translation stage offset	0	-0.005018542100998502			
[s] Observation start time (MET)	436551149.184000	436550773.15847			
Observation start date	2011-11-01T16:11:23	2011-11-01T16:06:13			
[s] Observation end time (MET)	436553329.184000	436553462.75861			
Observation end date	2011-11-01T16:47:43	2011-11-01T16:51:02			
Read mode	TIMED	TIMED			

2.3 Aspect



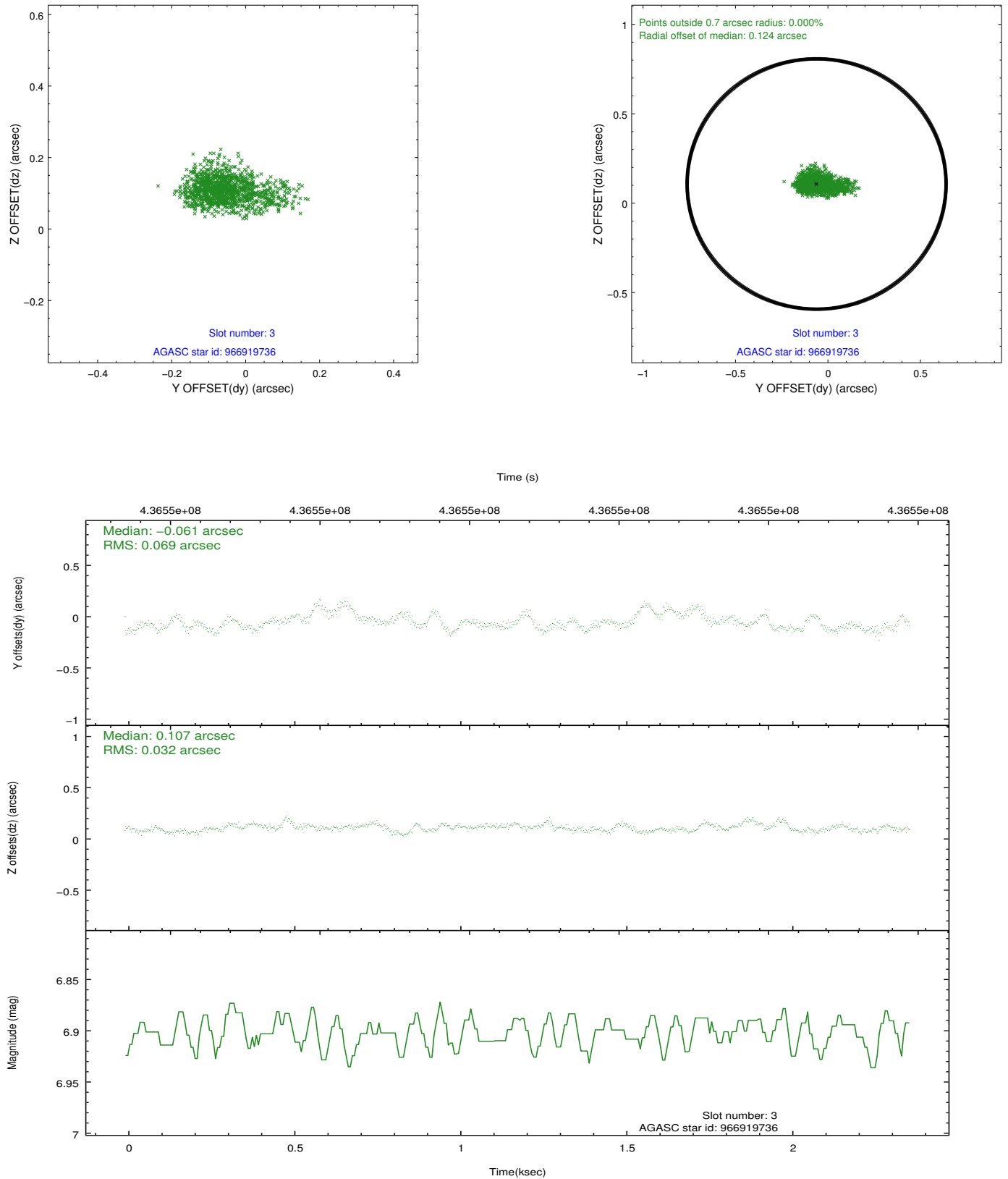


Slot Statistics

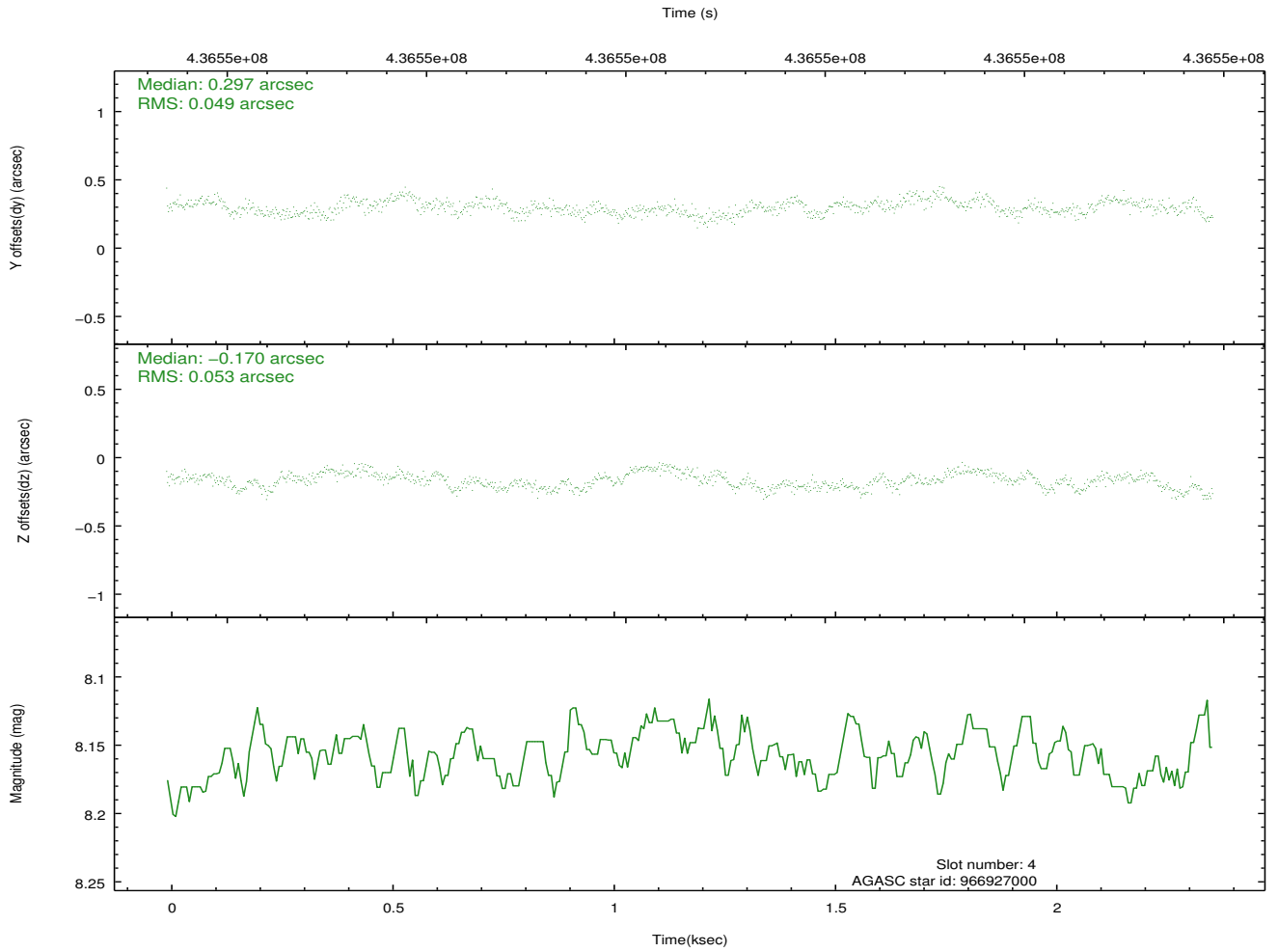
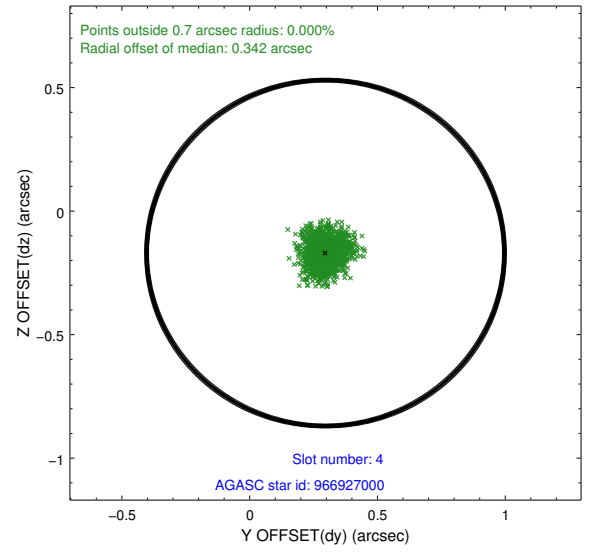
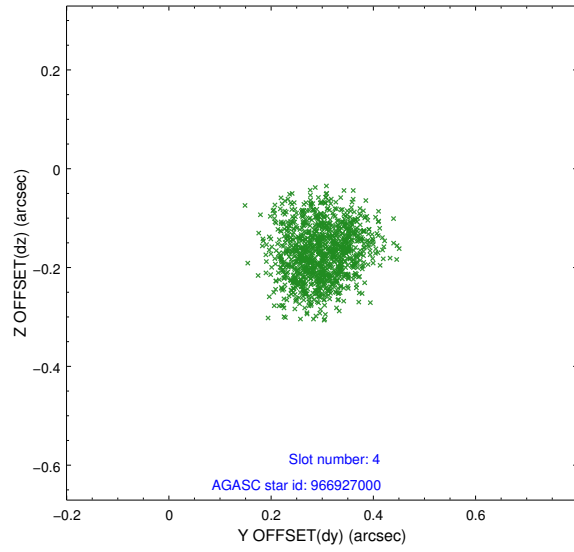
slot	status	id	mag	n_pts	med_dy	med_dz	dr1	dr2	ra	dec	mean_y	mean_z
0	FID	ACIS-I-1	7.02	577	0.015	-0.008	0.007	0.012	0.000000	0.000000	930.74	-838.11
1	FID	ACIS-I-4	6.94	577	0.155	0.022	0.006	0.011	0.000000	0.000000	2152.44	1060.36
2	FID	ACIS-I-5	7.01	577	-0.267	0.057	0.006	0.012	0.000000	0.000000	-1814.02	1061.34
3	GUIDE	966919736	6.90	1154	-0.061	0.107	0.076	0.150	267.322278	-30.597445	-1028.54	-105.05
4	GUIDE	966927000	8.16	1154	0.297	-0.170	0.079	0.123	267.318997	-31.255021	1318.92	192.29
5	GUIDE	967059168	8.43	1153	0.097	0.072	0.125	0.177	267.755631	-31.226839	1047.60	1512.60
6	GUIDE	966926496	8.09	1154	-0.046	0.067	0.069	0.108	267.109389	-30.299474	-2004.54	-900.81
7	GUIDE	967055776	9.20	1152	-0.289	-0.070	0.102	0.161	268.033851	-31.053384	317.45	2283.85

2.4 Star Slots

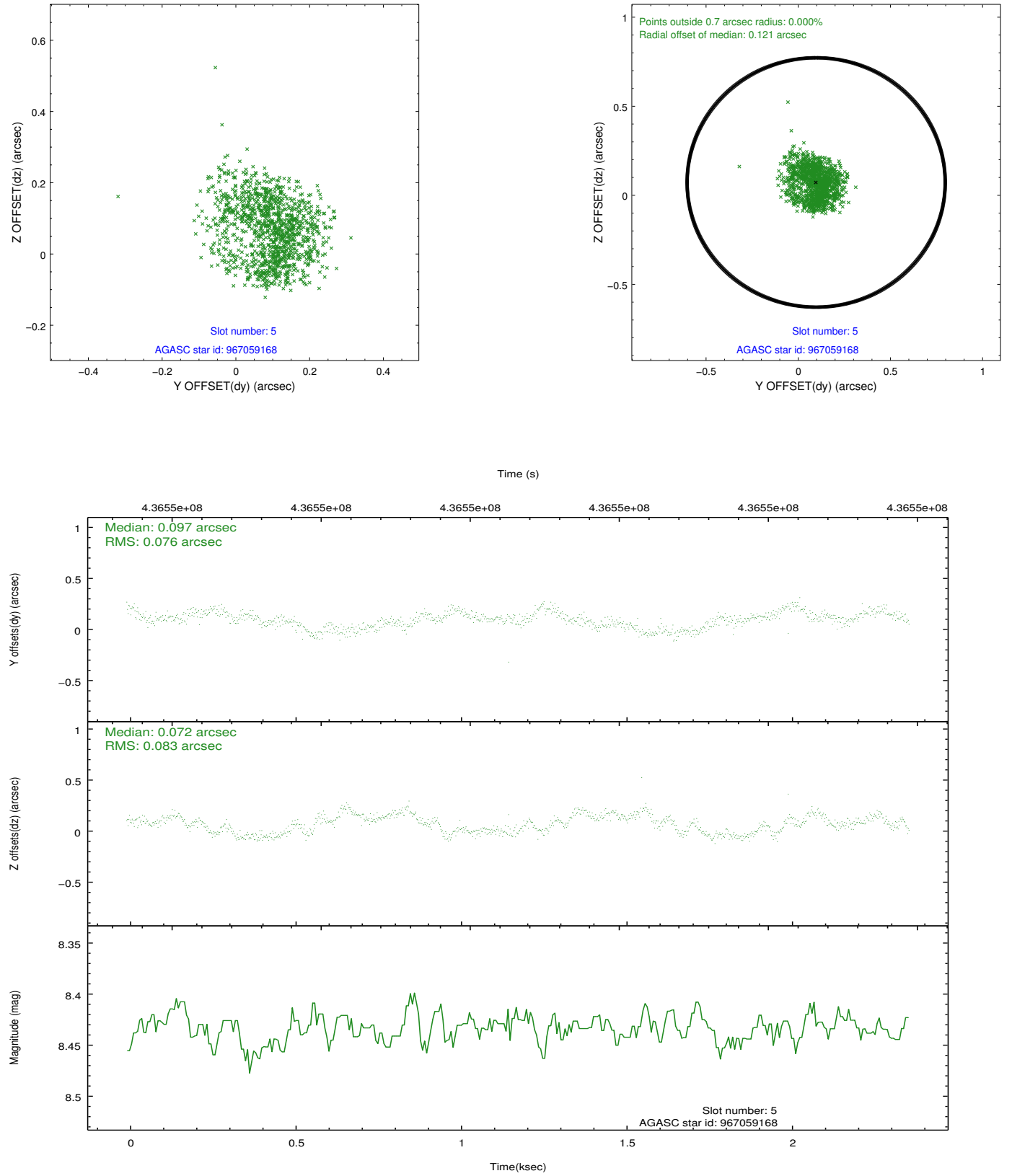
2.4.1 Slot 3



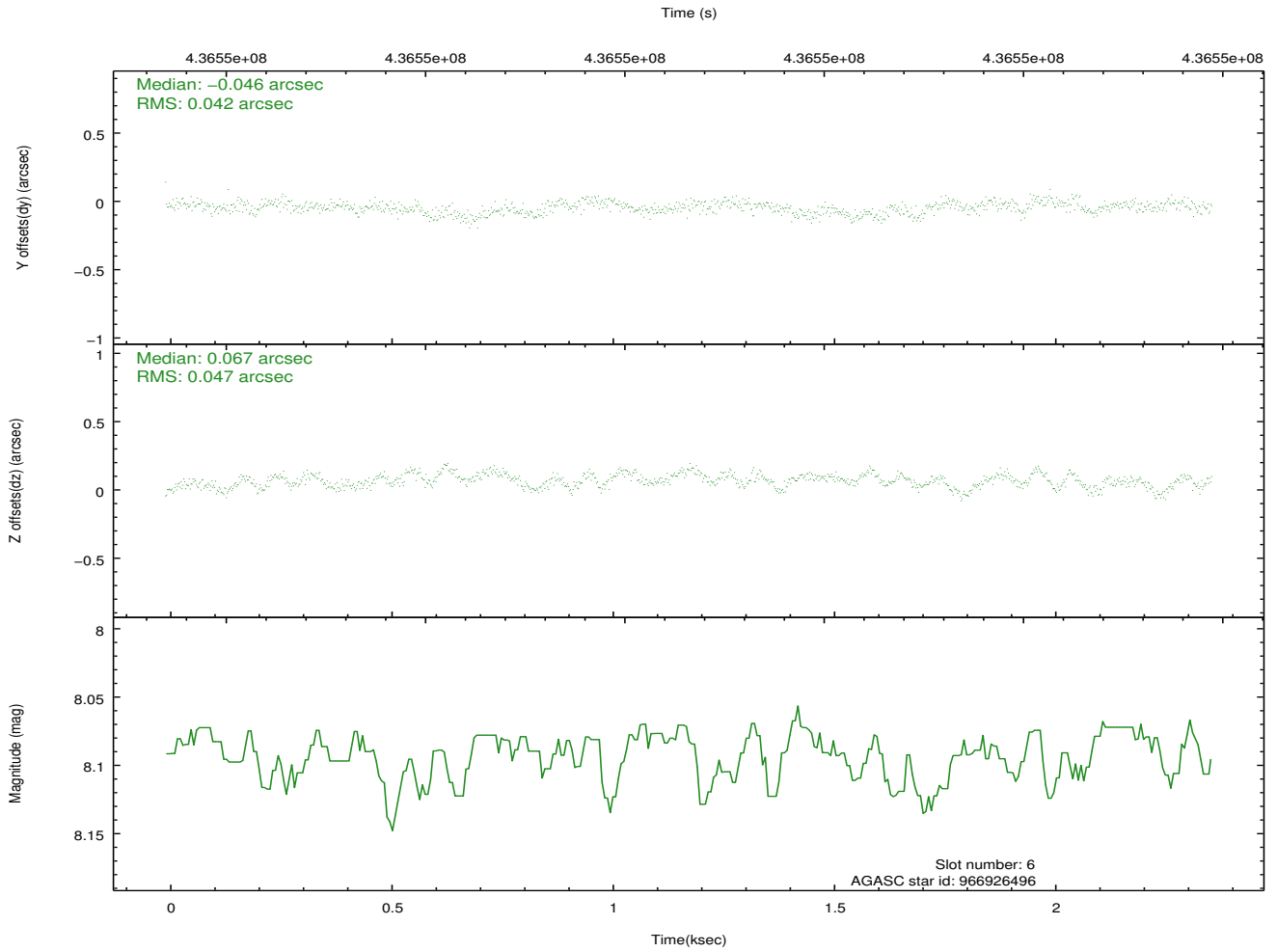
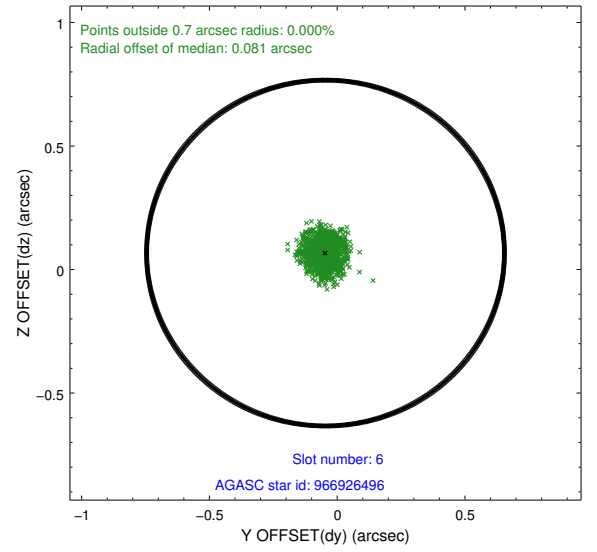
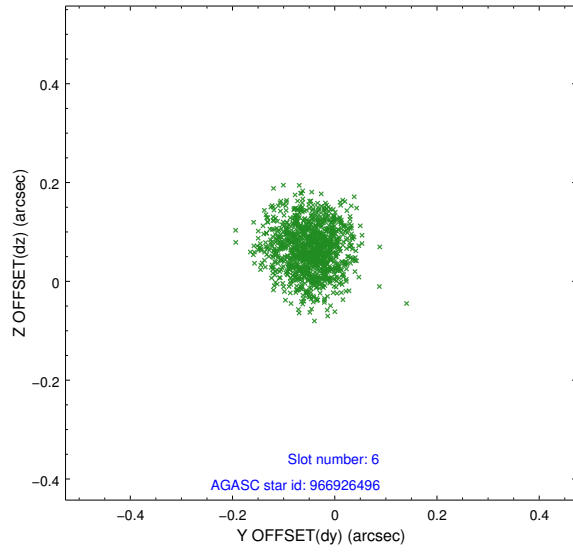
2.4.2 Slot 4



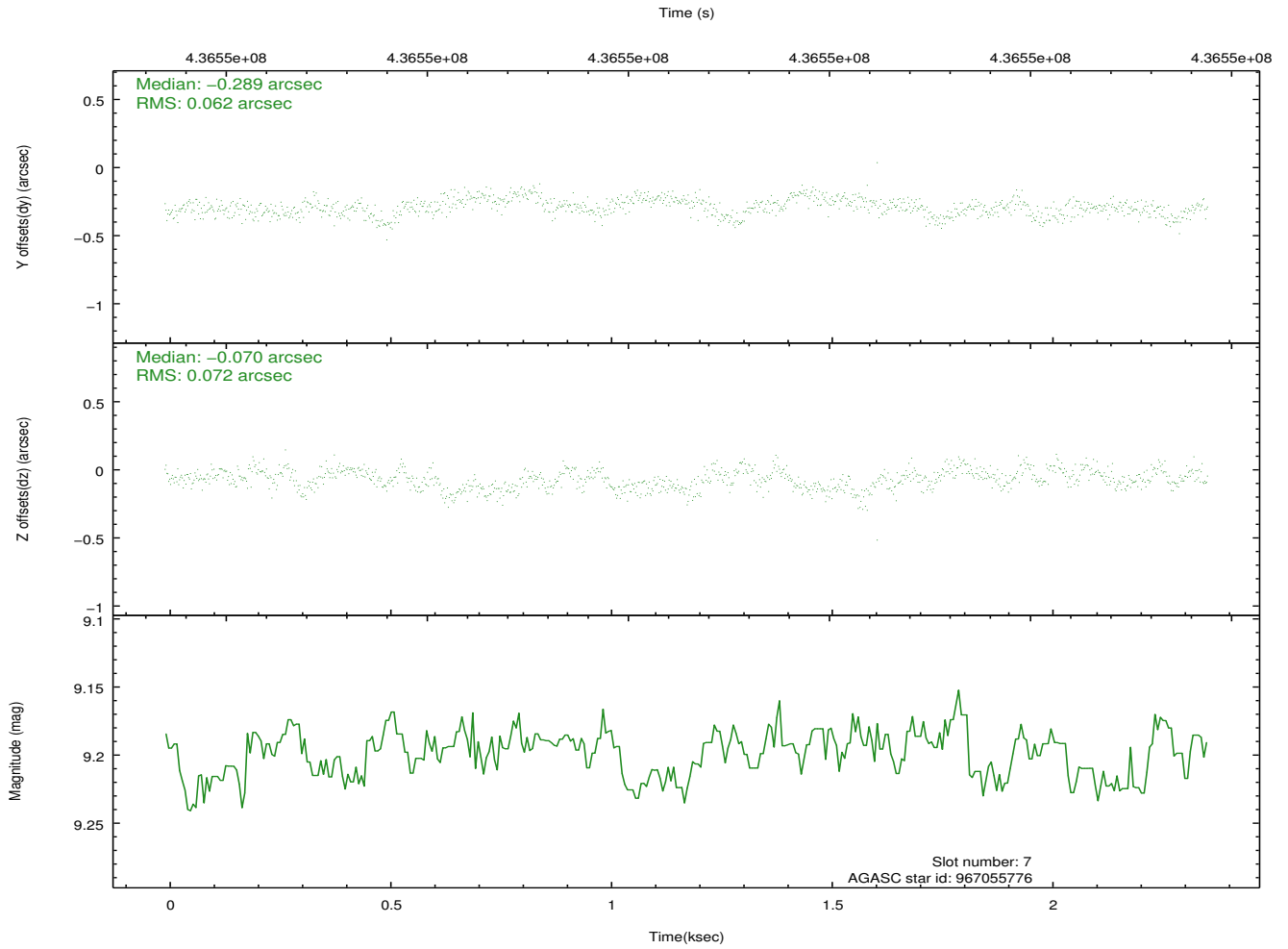
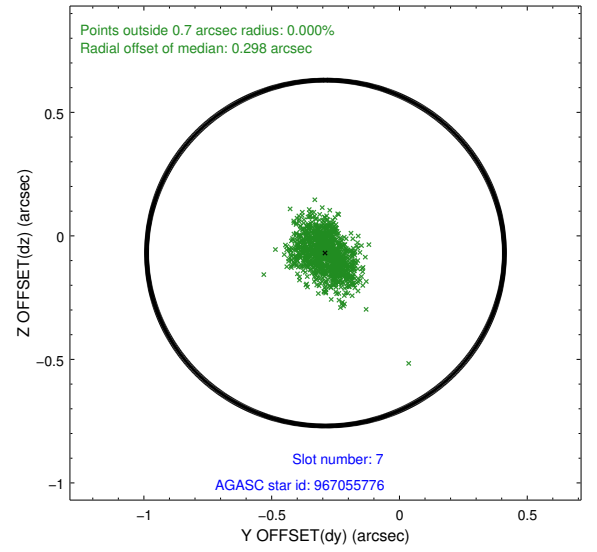
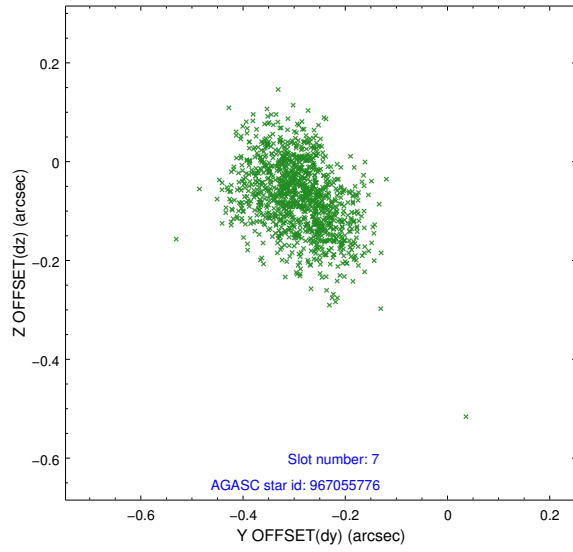
2.4.3 Slot 5



2.4.4 Slot 6

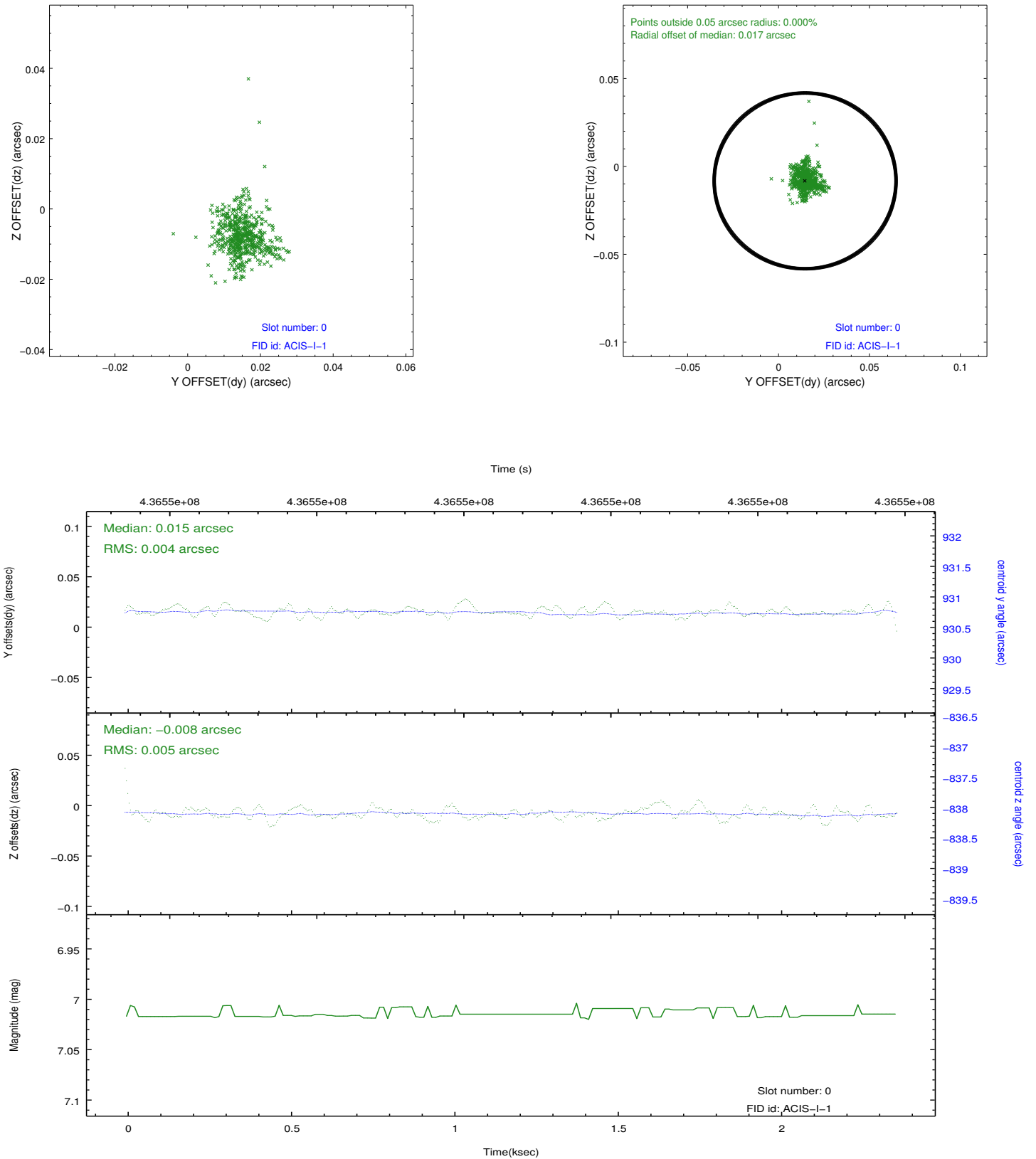


2.4.5 Slot 7

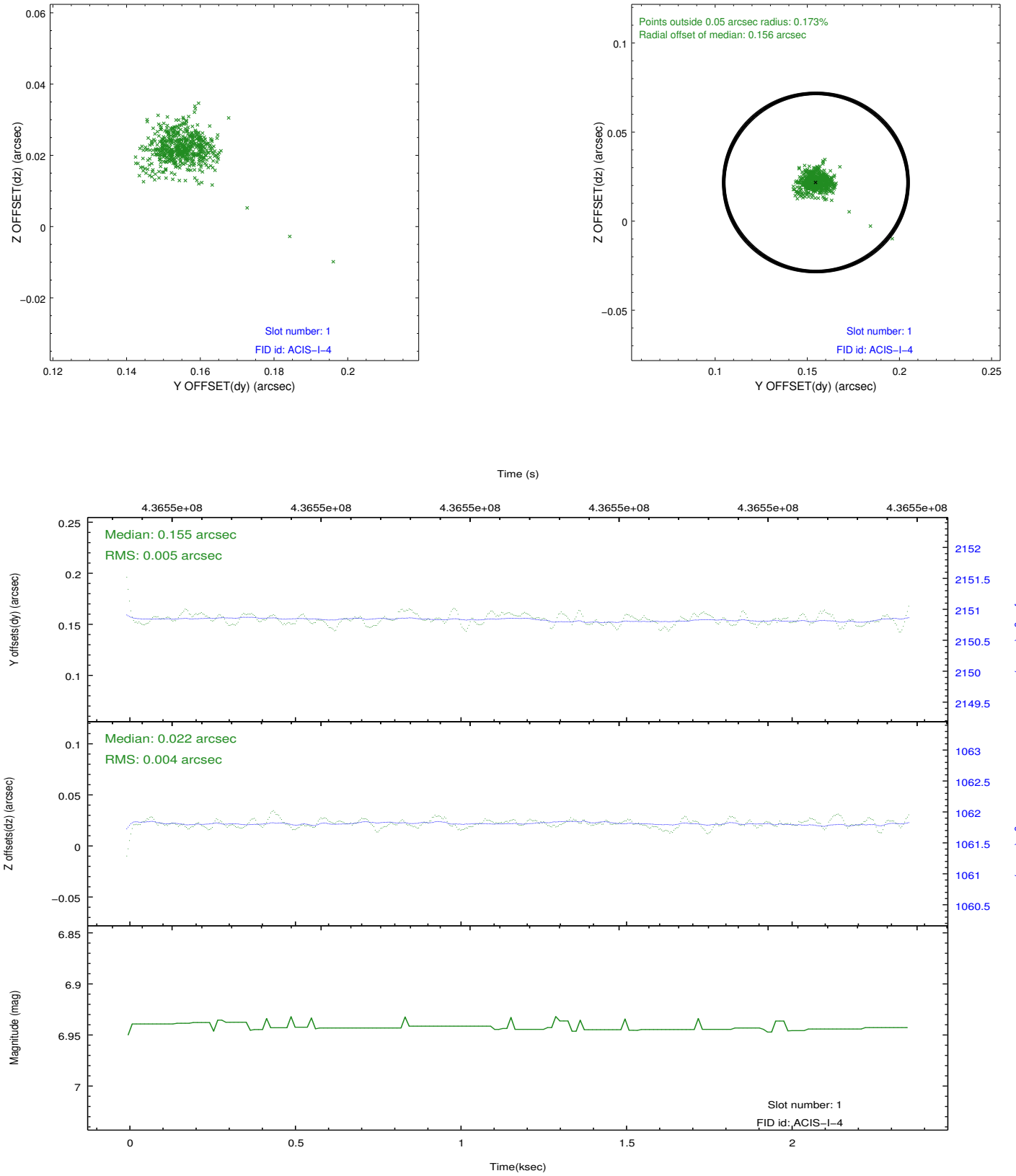


2.5 FID Slots

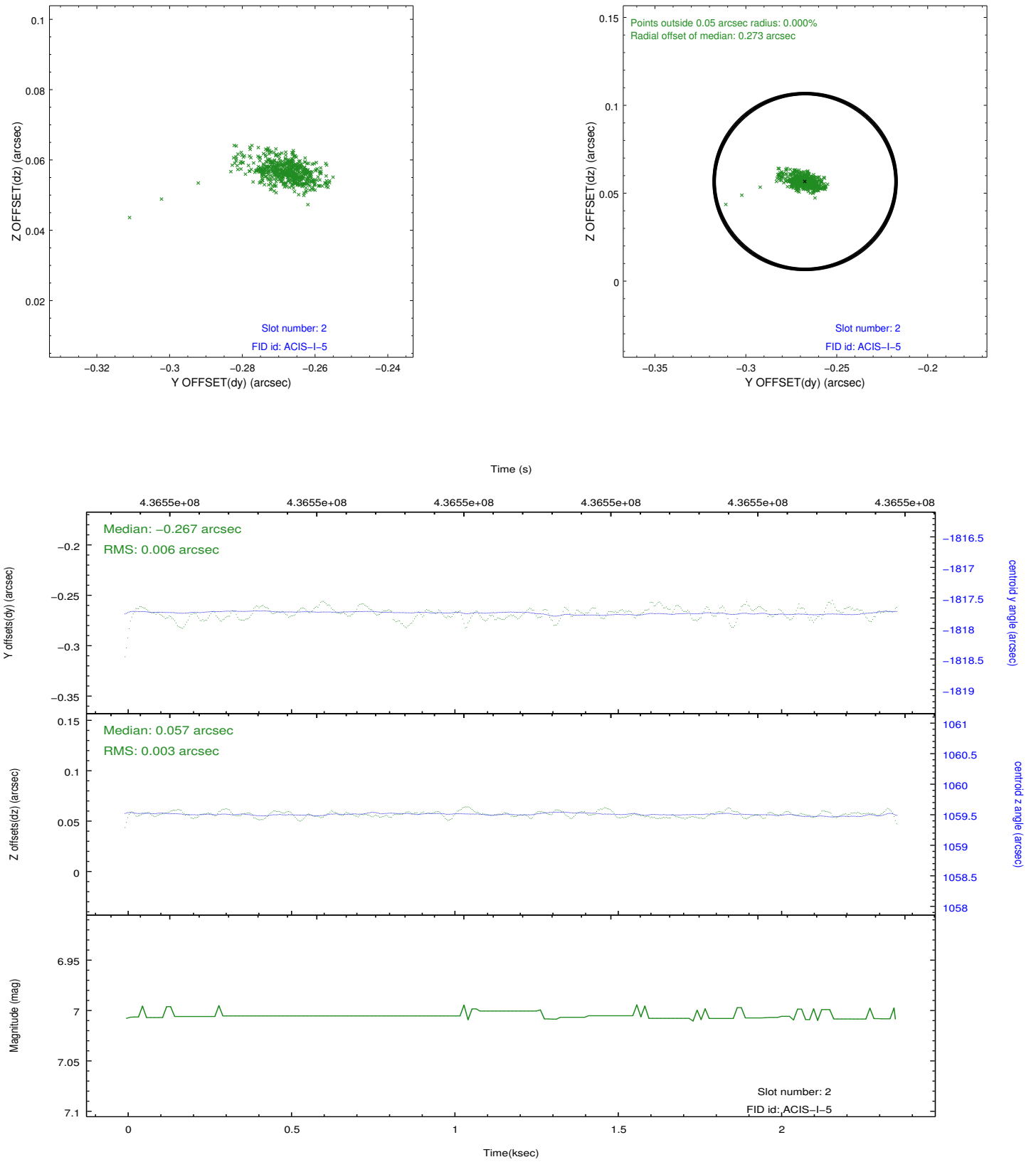
2.5.1 Slot 0



2.5.2 Slot 1



2.5.3 Slot 2



A Summary

A.1 Status

V&V Scientist	Beth Sundheim
V&V Date (YYYY-MM-DD)	2012.02.27
V&V Edition	1
V&V Disposition and Status	OK
V&V Charge Time	1.9737238256931

A.2 Comments

Joint proposal with NOAO.