

V&V Reference Report

L2 ASCDS Version : 8.4.5

Observation 15495 - L2 Version 1
Chandra X-Ray Center

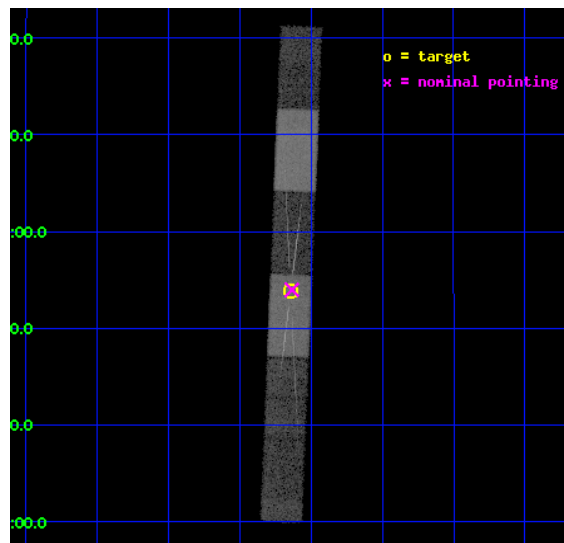
L2 Processing Date : Sep 13 2012

Contents

1	Front	2
2	OBI	3
2.1	OBI	3
2.1.1	Images	3
2.1.2	Bias	3
2.1.3	Parameters	4
2.1.4	Events	4
2.2	Compared Parameters	5
2.3	Aspect	6
2.4	Star Slots	9
2.4.1	Slot 3	9
2.4.2	Slot 4	10
2.4.3	Slot 5	11
2.4.4	Slot 6	12
2.4.5	Slot 7	13
2.5	FID Slots	14
2.5.1	Slot 0	14
2.5.2	Slot 1	15
2.5.3	Slot 2	16
3	Gratings	17
3.1	HEG Arm	17
3.2	MEG Arm	19
A	Summary	21
A.1	Status	21
A.2	Comments	21

1 Front

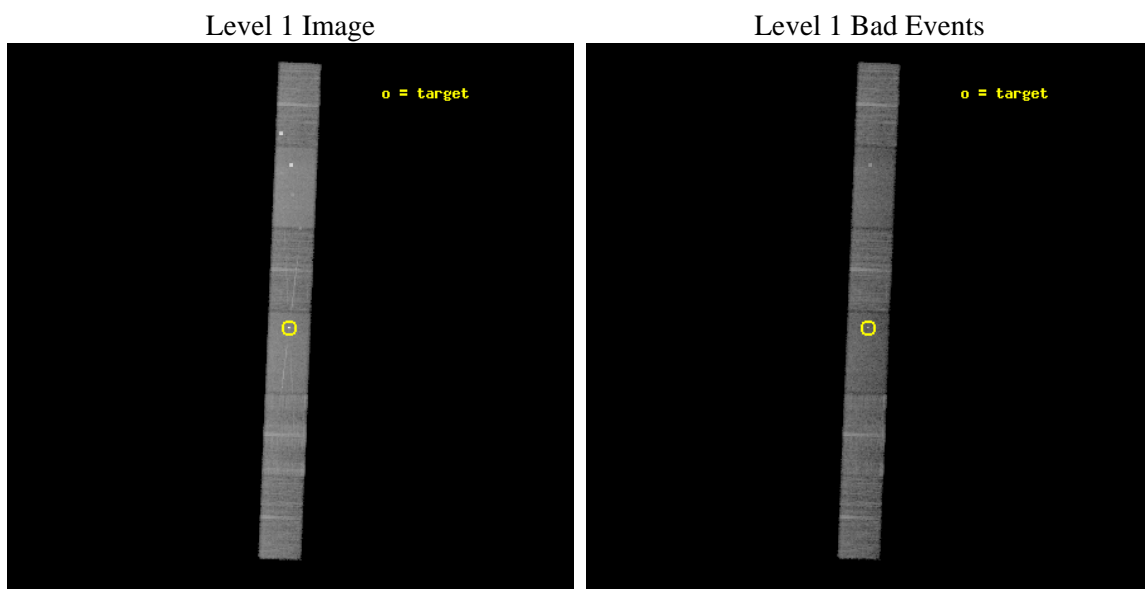
seq_num	300316	Sequence number
obs_id	15495	Observation id
title	Grating Spectroscopy of early hard X-ray emission in Nova Mon 2012	
observer	Dr Jan-Uwe Ness	Principal investigator
object	PNV J06393874+0553520; Mon2012	Source name
dtcycle	0	
cycle	P	events from which exps? Prim/Second/Both
ra_targ	99.91125	Observer's specified target RA [deg]
dec_targ	5.898167	Observer's specified target Dec [deg]
ra_nom	99.908623251516	Nominal RA [deg]
dec_nom	5.8997086639191	Nominal Dec [deg]
roll_nom	92.34277002967	Nominal Roll [deg]
revision	1	Processing version of data
ontime	25049.134635031	Sum of GTIs [s]
livetime	24458.673482259	Livetime [s]
ontime4	25049.175675035	Sum of GTIs [s]
ontime5	25049.093595028	Sum of GTIs [s]
ontime6	25049.052555025	Sum of GTIs [s]
ontime7	25049.134635031	Sum of GTIs [s]
ontime8	25049.011515021	Sum of GTIs [s]
ontime9	25048.970475018	Sum of GTIs [s]
l2events	134059	Number of level 2 events



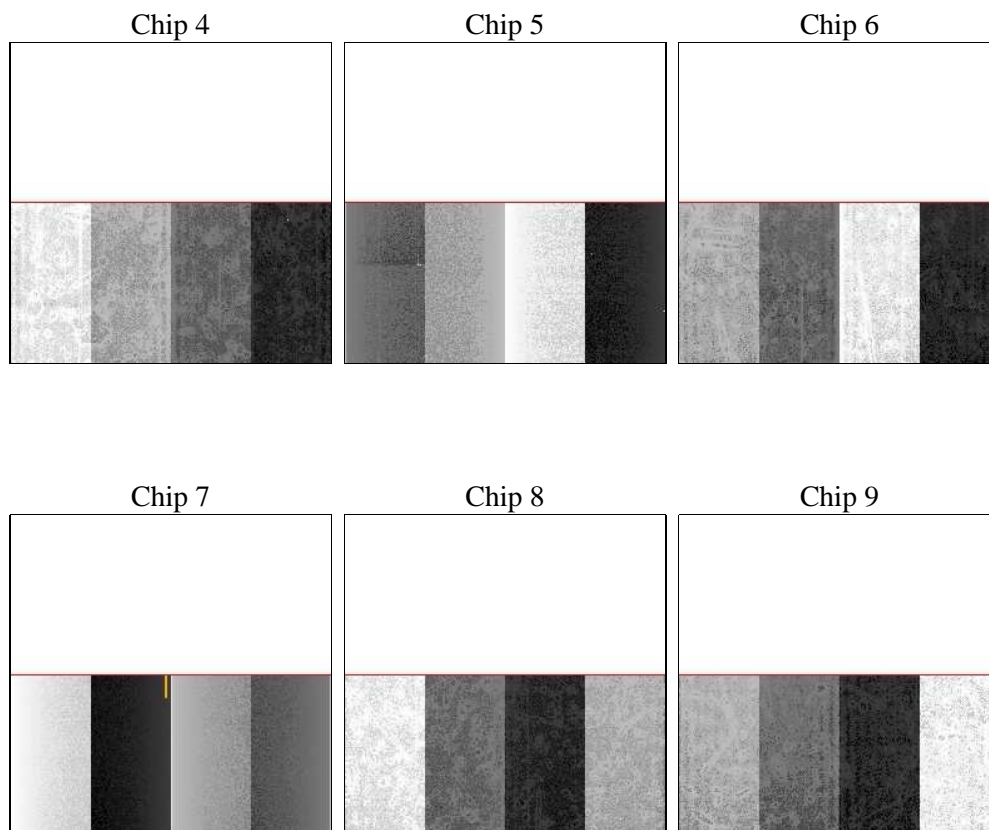
2 OBI

2.1 OBI

2.1.1 Images



2.1.2 Bias



2.1.3 Parameters

obi_num	0	Obi number	sched_exp_time	25000.000000	[s] Scheduled observation exposure time
ascdsver	8.4.5	Processing system revision	ontime	25049.134635031	Sum of GTIs [s]
caldsver	4.5.1.1	 	ontime4	25049.175675035	Sum of GTIs [s]
date	2012-09-13T03:40:29	Date and time of file creation	ontime5	25049.093595028	Sum of GTIs [s]
revision	1	Processing version of data	ontime6	25049.052555025	Sum of GTIs [s]
			ontime7	25049.134635031	Sum of GTIs [s]
			ontime8	25049.011515021	Sum of GTIs [s]
			ontime9	25048.970475018	Sum of GTIs [s]
			l1events	539178	Number of level 1 events

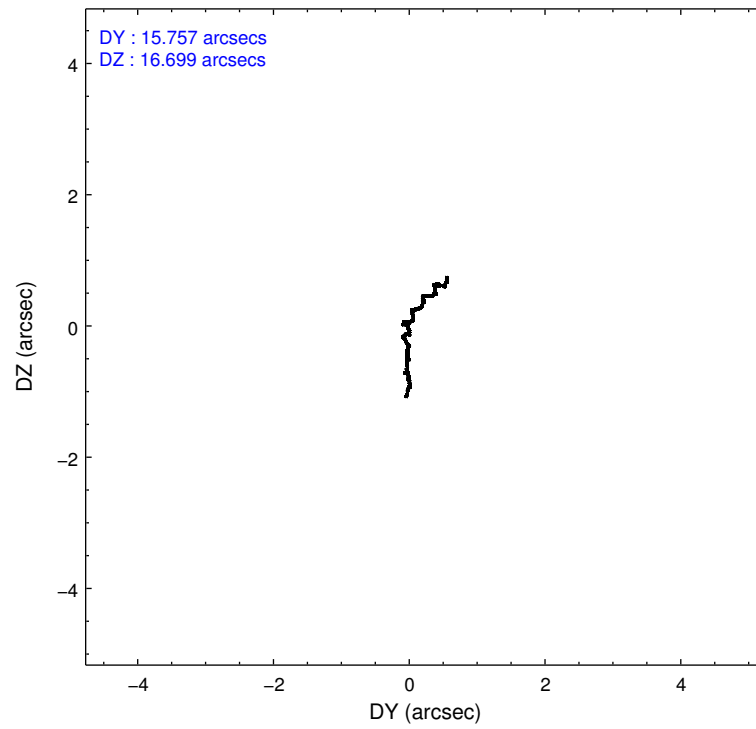
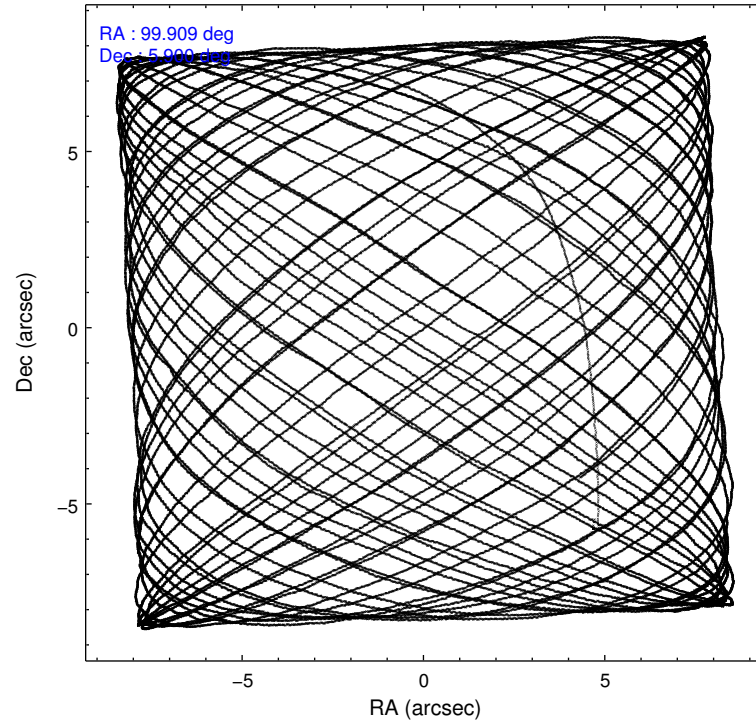
2.1.4 Events

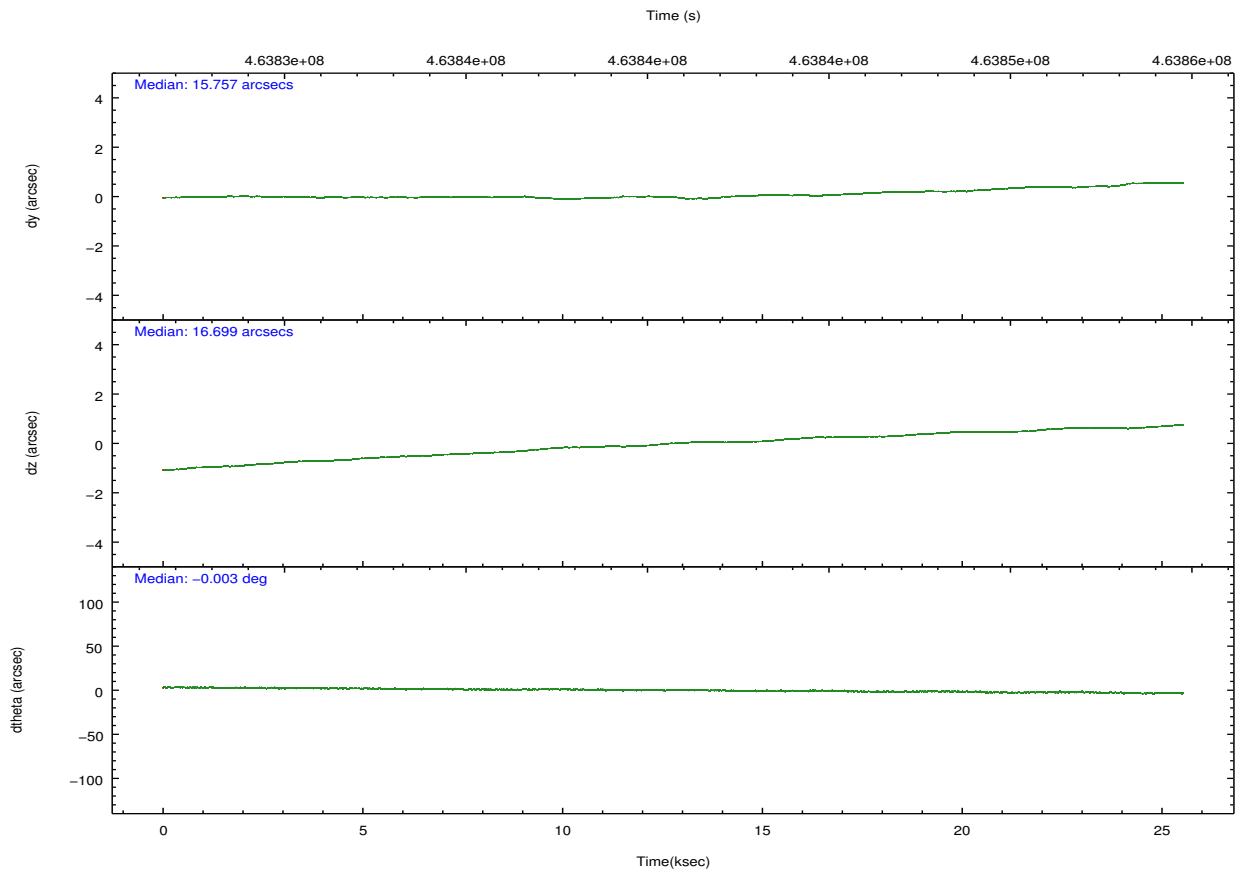
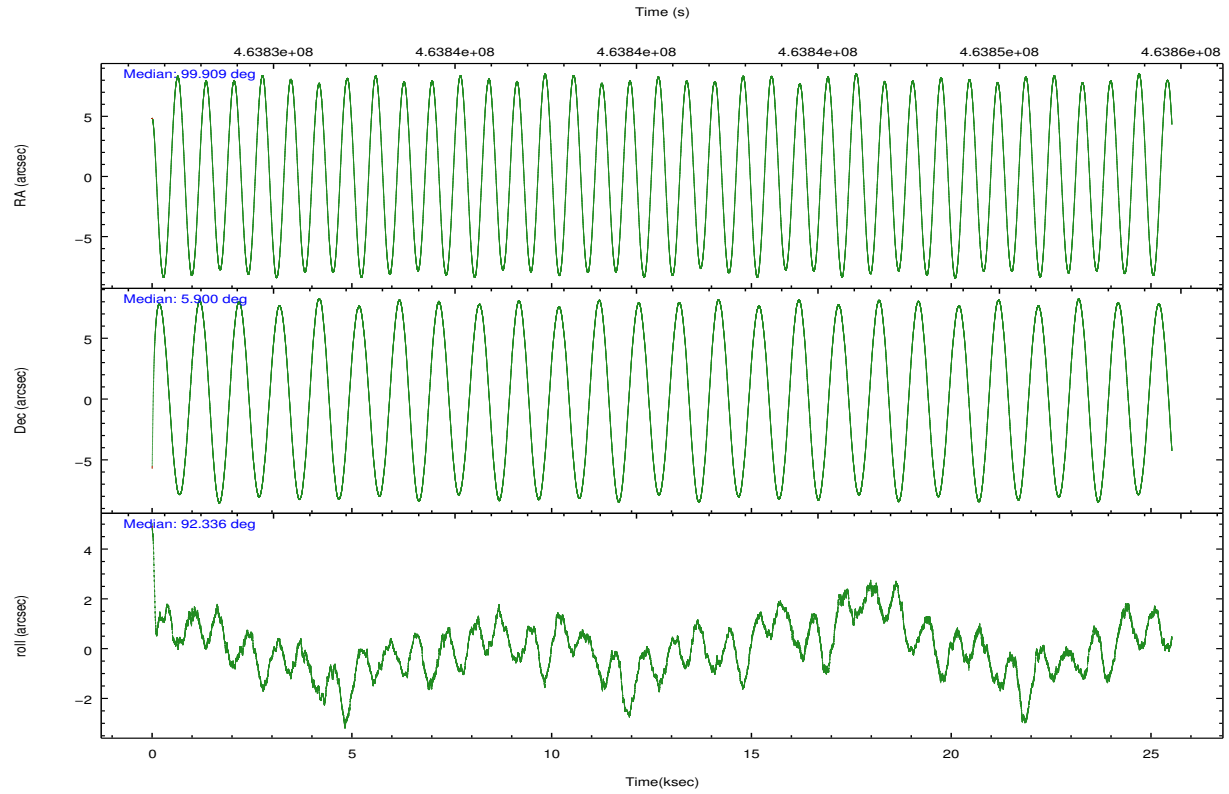
	ccd 4	ccd 5	ccd 6	ccd 7	ccd 8	ccd 9		ccd 4	ccd 5	ccd 6	ccd 7	ccd 8	ccd 9
level 1 events	85996	117892	72907	97917	96335	68131	grade 0 events	10851	5353	5196	5076	8173	3120
rejected events	69076	56565	61340	49783	68931	58980		12%	4%	7%	5%	8%	4%
rejected %	80%	47%	84%	50%	71%	86%	grade 1 events	71	189	34	135	68	28
								0%	0%	0%	0%	0%	0%
							grade 2 events	2308	22194	2258	10170	6014	1964
								2%	18%	3%	10%	6%	2%
							grade 3 events	1033	2971	1165	4667	3083	1111
								1%	2%	1%	4%	3%	1%
							grade 4 events	1062	2820	1134	4739	2755	1011
								1%	2%	1%	4%	2%	1%
							grade 5 events	3350	9436	3248	9432	4777	3515
								3%	8%	4%	9%	4%	5%
							grade 6 events	1666	27995	1815	23485	7381	1947
								1%	23%	2%	23%	7%	2%
							grade 7 events	65655	46934	58057	40213	64084	55435
								76%	39%	79%	41%	66%	81%

2.2 Compared Parameters

Parameter	Planned	Actual	Parameter	Planned	Actual
Instrument	ACIS	ACIS	Obspar format version number	7	7
Detector	ACIS-456789	ACIS-456789	Obspar file type	PREDICTED	ACTUAL
Grating	HETG	HETG	Obspar update status	NONE	UPDATED
Data mode	FAINT	FAINT	CCD I0 on	N	N
Observation mode	POINTING	POINTING	CCD I1 on	N	N
[deg] Pointing RA	99.923641	99.90862325151586	CCD I2 on	N	N
[deg] Pointing Dec	5.876788	5.89970866391912	CCD I3 on	N	N
[deg] Pointing Roll	92.184603	92.34277002966957	CCD S0 on	O1	Y
[mm] SIM focus pos	-0.684267	-0.6828225247311905	CCD S1 on	Y	Y
[mm] SIM defocus	0	0.001444936568705701	CCD S2 on	Y	Y
[mm] SIM translation stage pos	-183.992523	-183.985022191653	CCD S3 on	Y	Y
[mm] SIM translation stage offset	-6.14	-6.147500391354811	CCD S4 on	Y	Y
[s] Observation start time (MET)	463828460.184000	463827046.01511	CCD S5 on	Y	Y
Observation start date	2012-09-12T09:13:13	2012-09-12T08:50:46	Number of optional ACIS chips dropped	0	0
[s] Observation end time (MET)	463853460.184000	463854382.25407	On-chip summing requested	N	N
Observation end date	2012-09-12T16:09:53	2012-09-12T16:26:22	Subarray requested	CUSTOM	1/2
Read mode	TIMED	TIMED	Subarray start row	1	1
			Subarray row count	512	512
			Alternating exposures requested	N	N
			[s] Primary exposure time	0.000000	1.7

2.3 Aspect



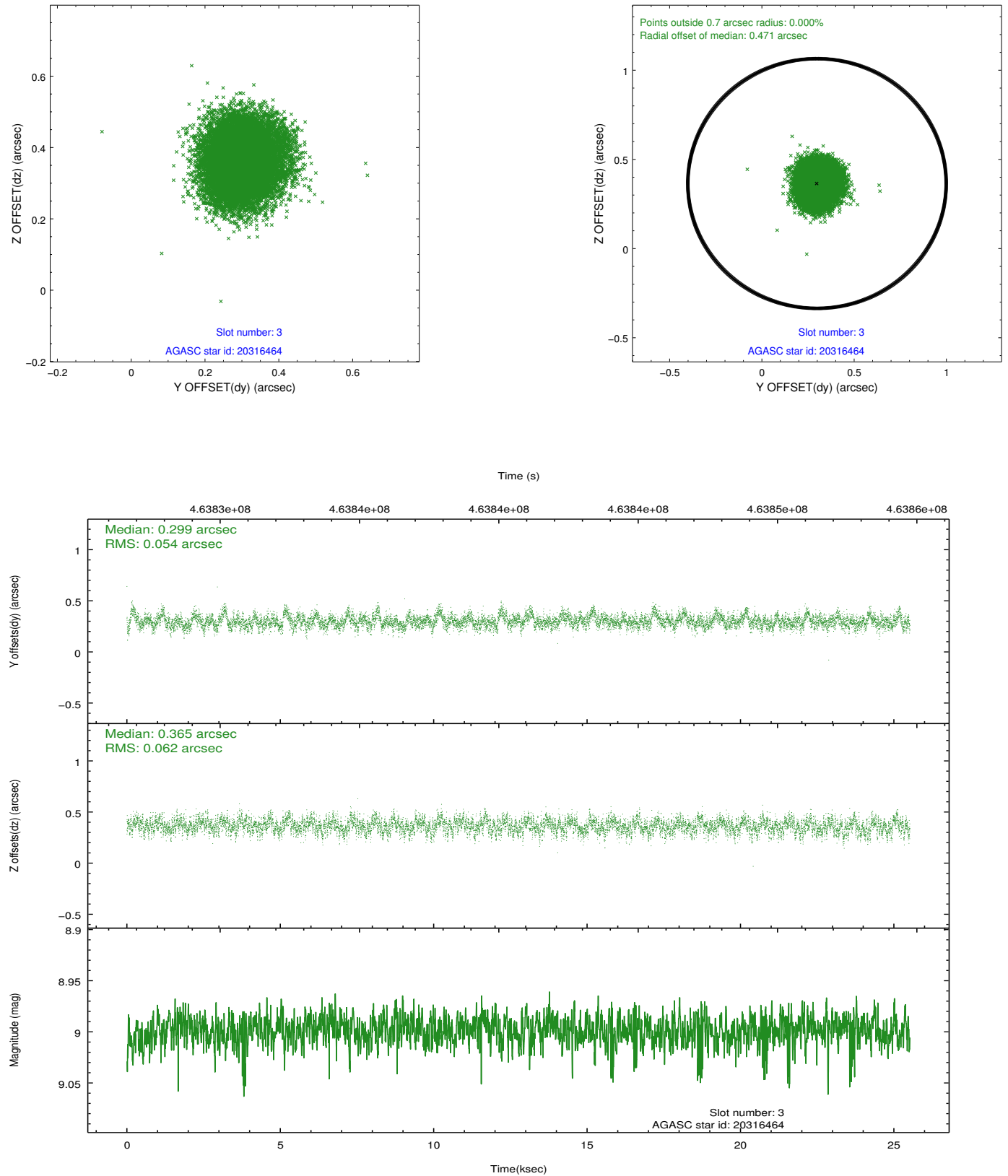


Slot Statistics

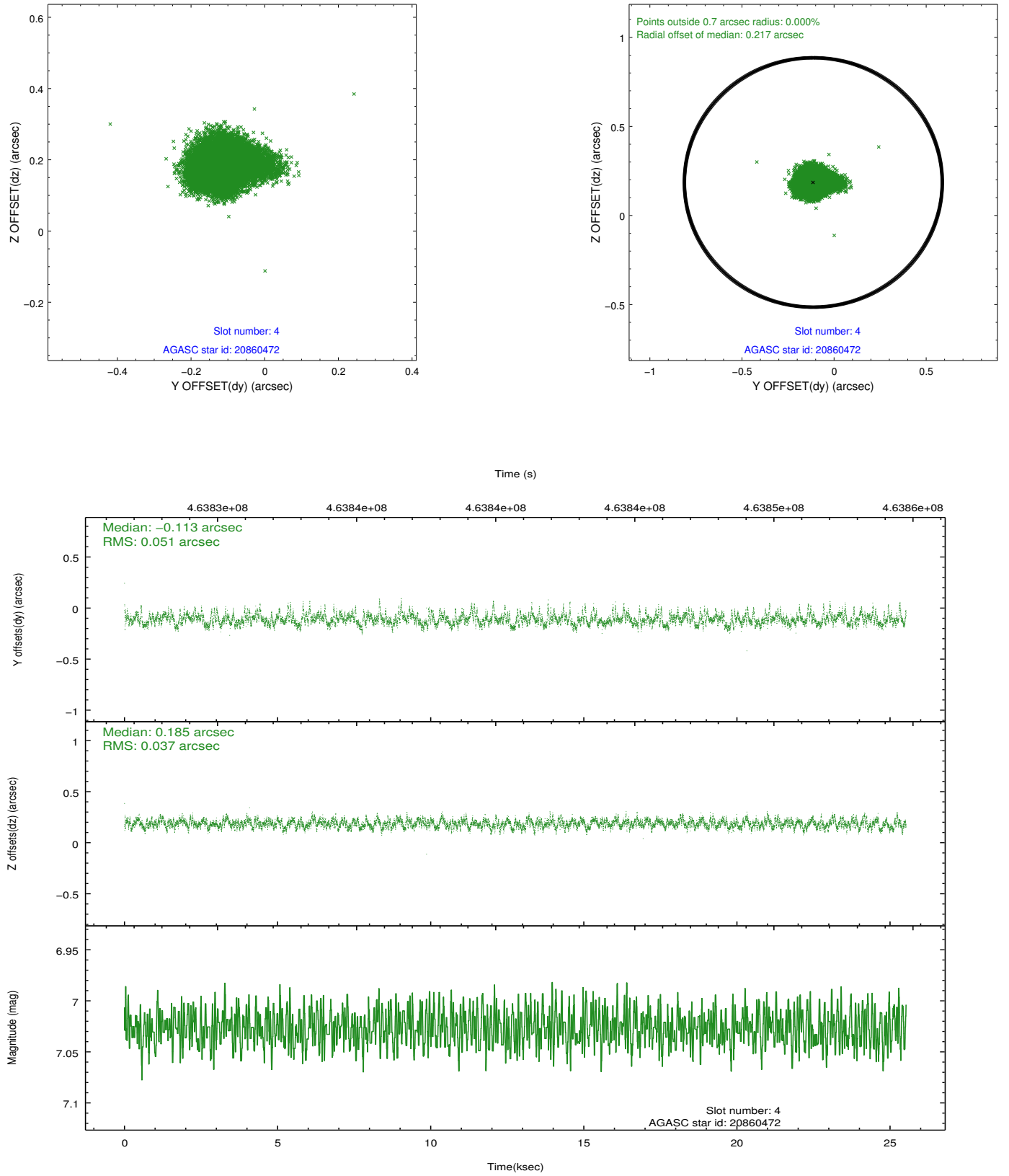
slot	status	id	mag	n_pts	med_dy	med_dz	dr1	dr2	ra	dec	mean_y	mean_z
0	FID	ACIS-S-2	6.90	6226	-0.124	-0.106	0.029	0.039	0.000000	0.000000	-768.56	-1864.85
1	FID	ACIS-S-4	6.97	6226	0.256	0.088	0.006	0.011	0.000000	0.000000	2145.07	43.64
2	FID	ACIS-S-5	7.02	6225	-0.165	0.026	0.027	0.036	0.000000	0.000000	-1821.27	37.43
3	GUIDE	20316464	9.00	12447	0.299	0.365	0.088	0.142	100.282040	5.470405	-1509.90	-1227.44
4	GUIDE	20860472	7.03	12450	-0.113	0.185	0.067	0.107	100.133111	6.371245	1750.34	-816.39
5	GUIDE	20864480	6.86	12450	-0.092	0.198	0.111	0.165	100.496798	6.345427	1609.27	-2113.24
6	GUIDE	20198680	7.44	12450	0.142	-0.396	0.063	0.102	99.264537	5.519391	-1194.13	2408.72
7	GUIDE	20864528	7.42	12449	-0.239	-0.351	0.061	0.098	99.593328	6.317246	1629.59	1120.75

2.4 Star Slots

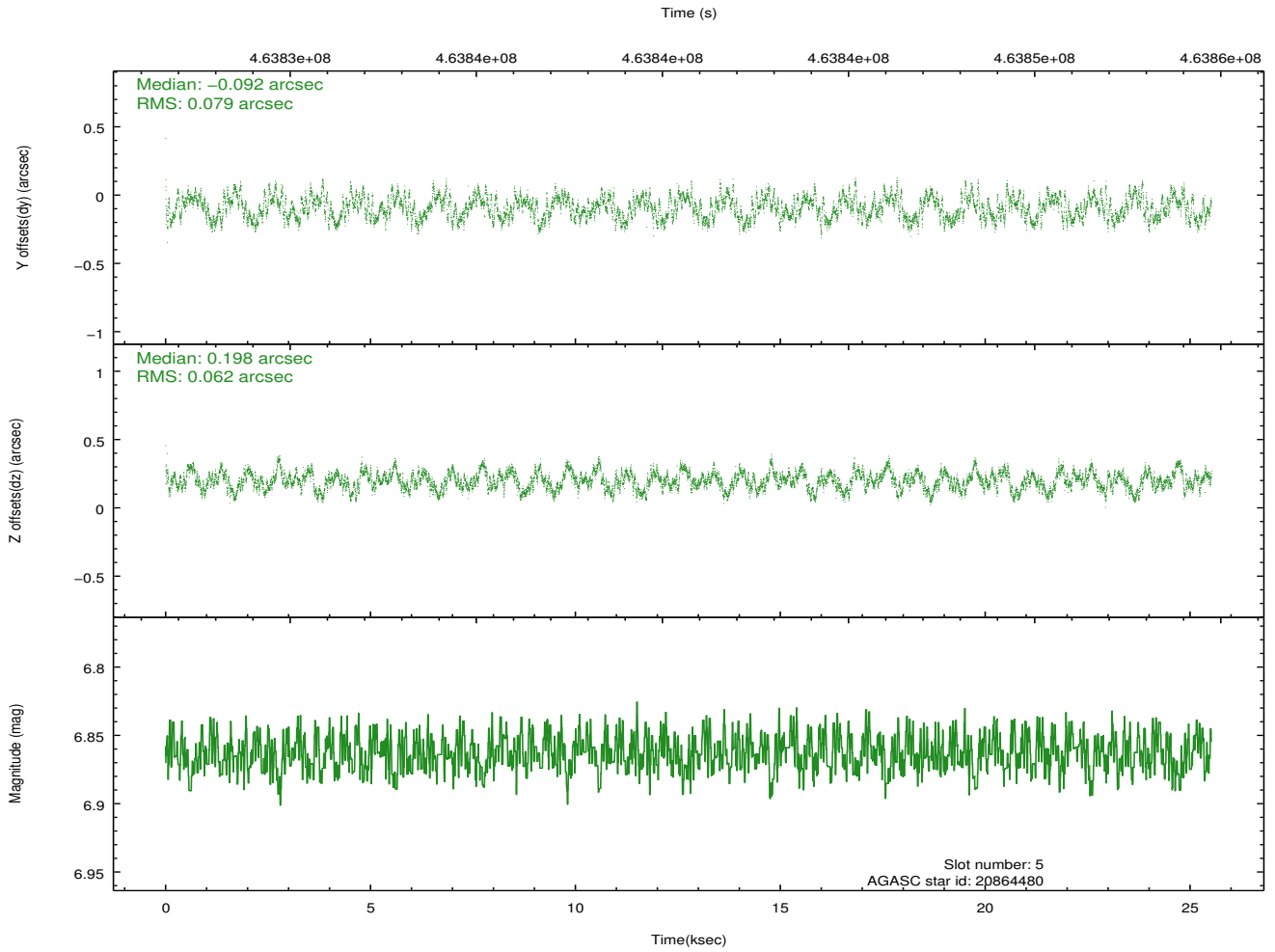
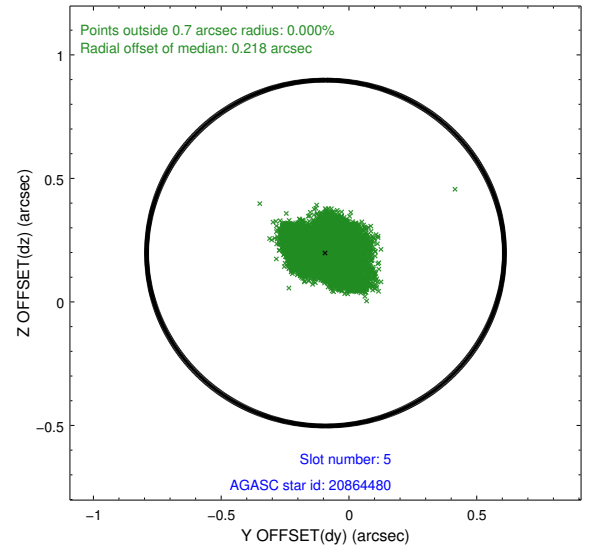
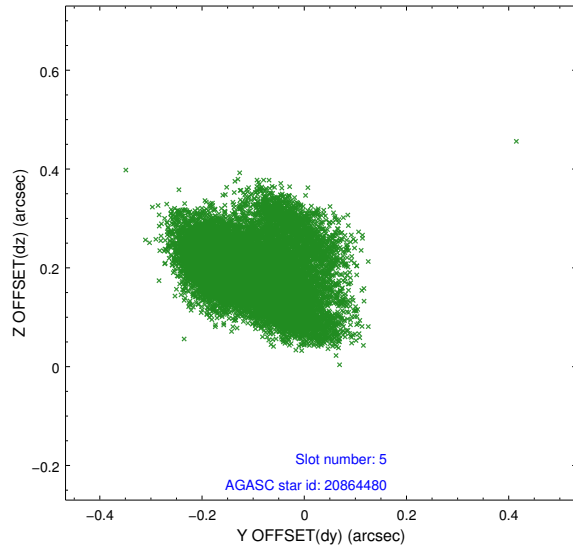
2.4.1 Slot 3



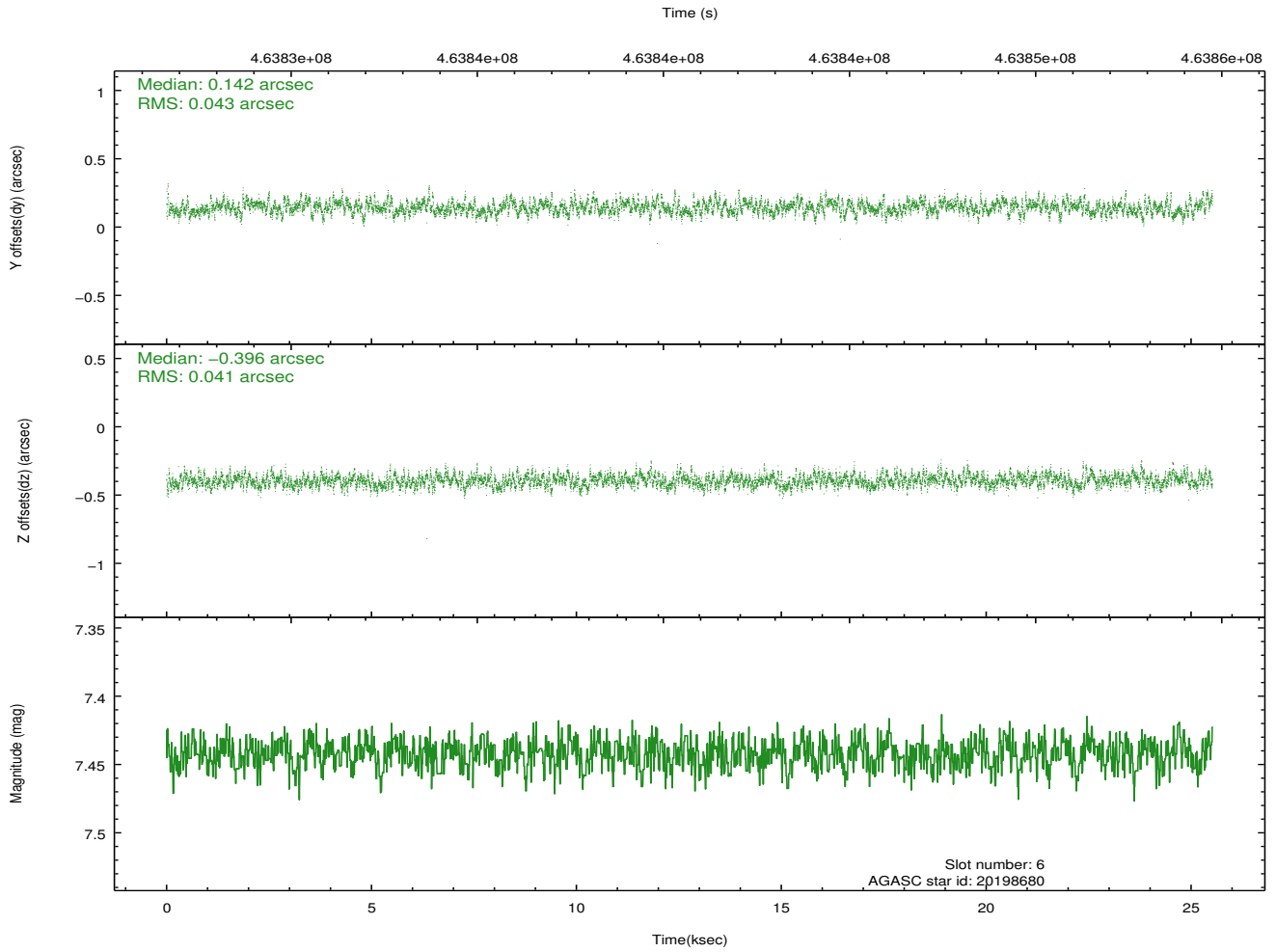
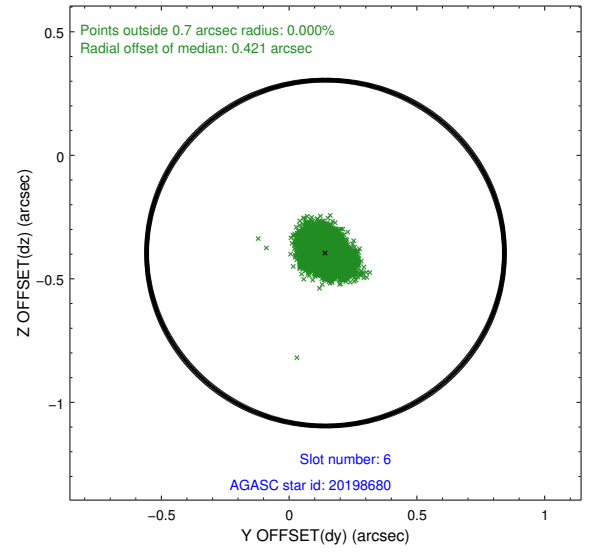
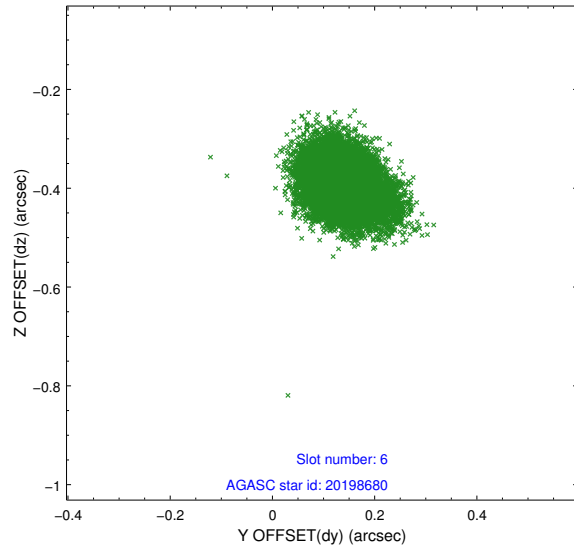
2.4.2 Slot 4



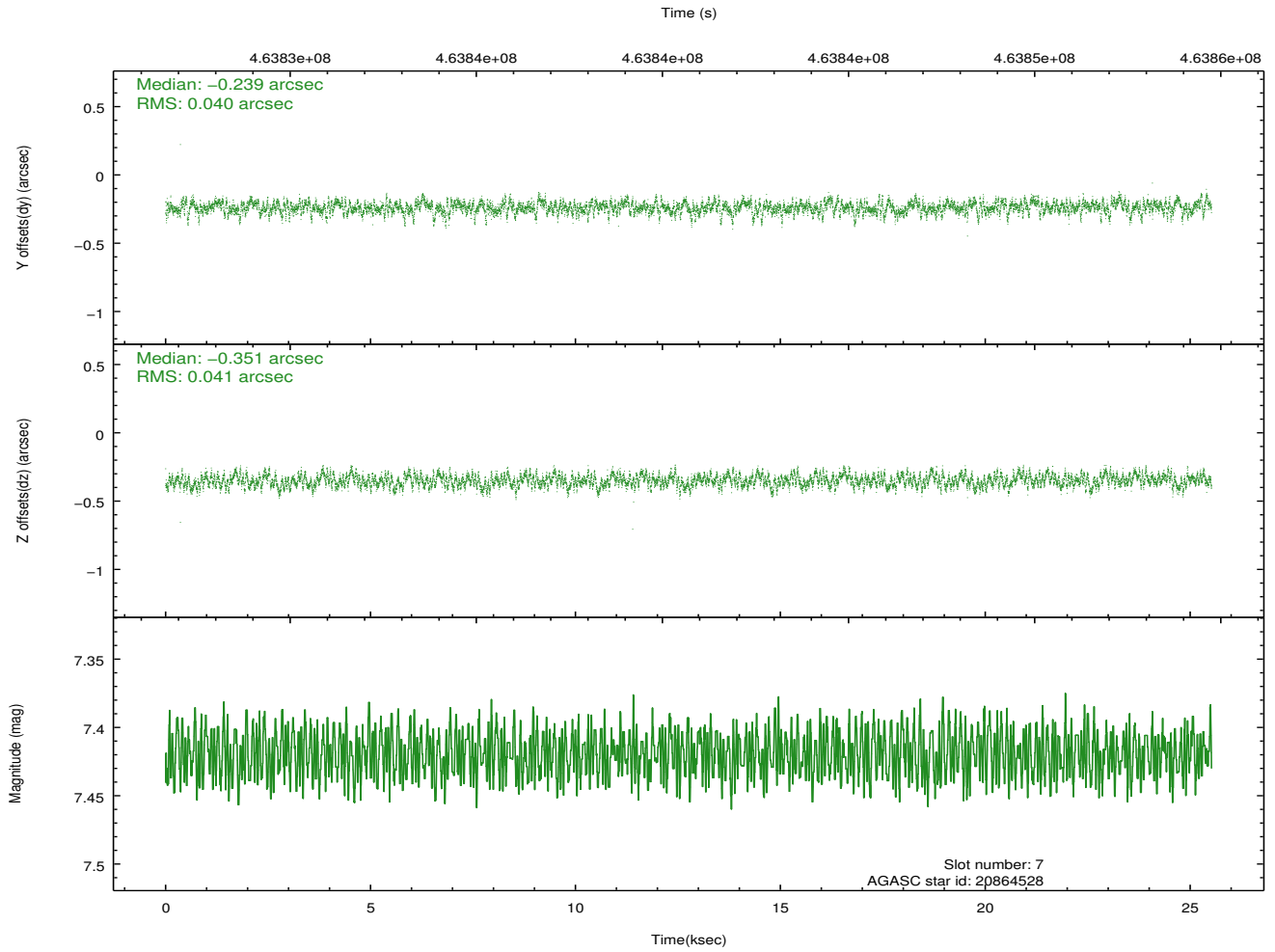
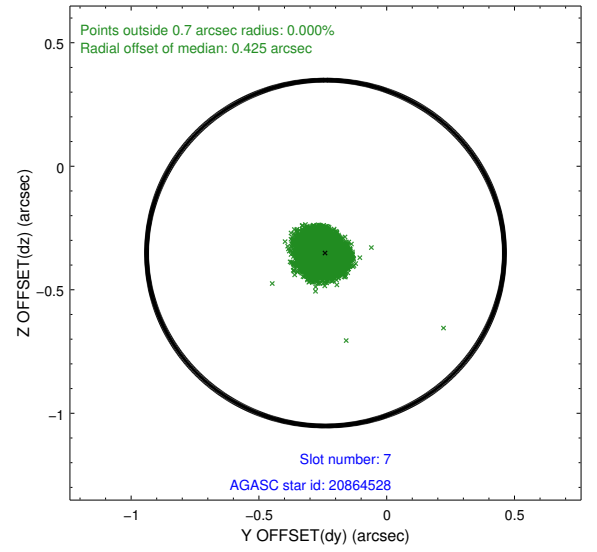
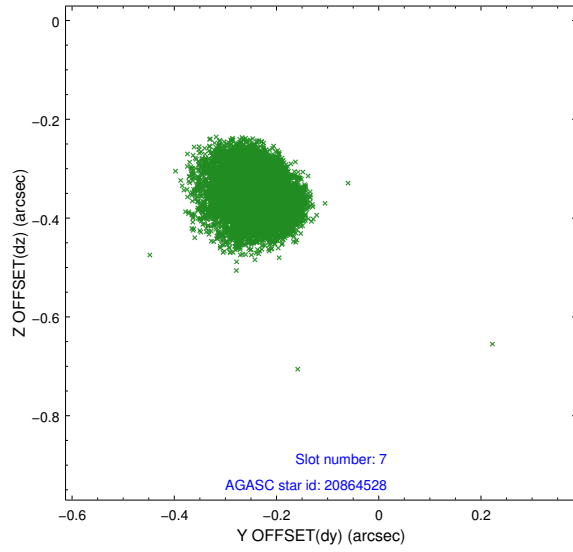
2.4.3 Slot 5



2.4.4 Slot 6

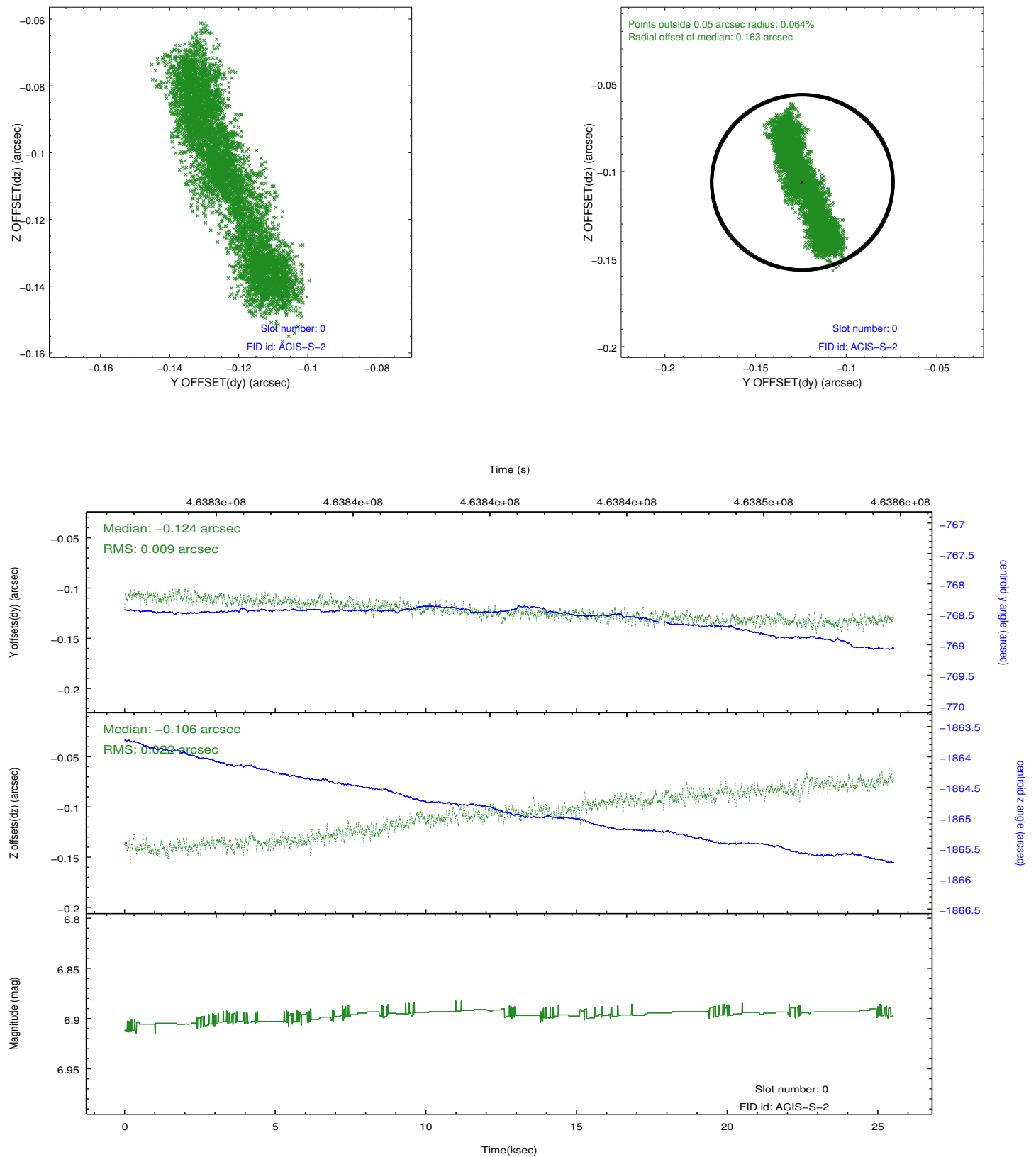


2.4.5 Slot 7

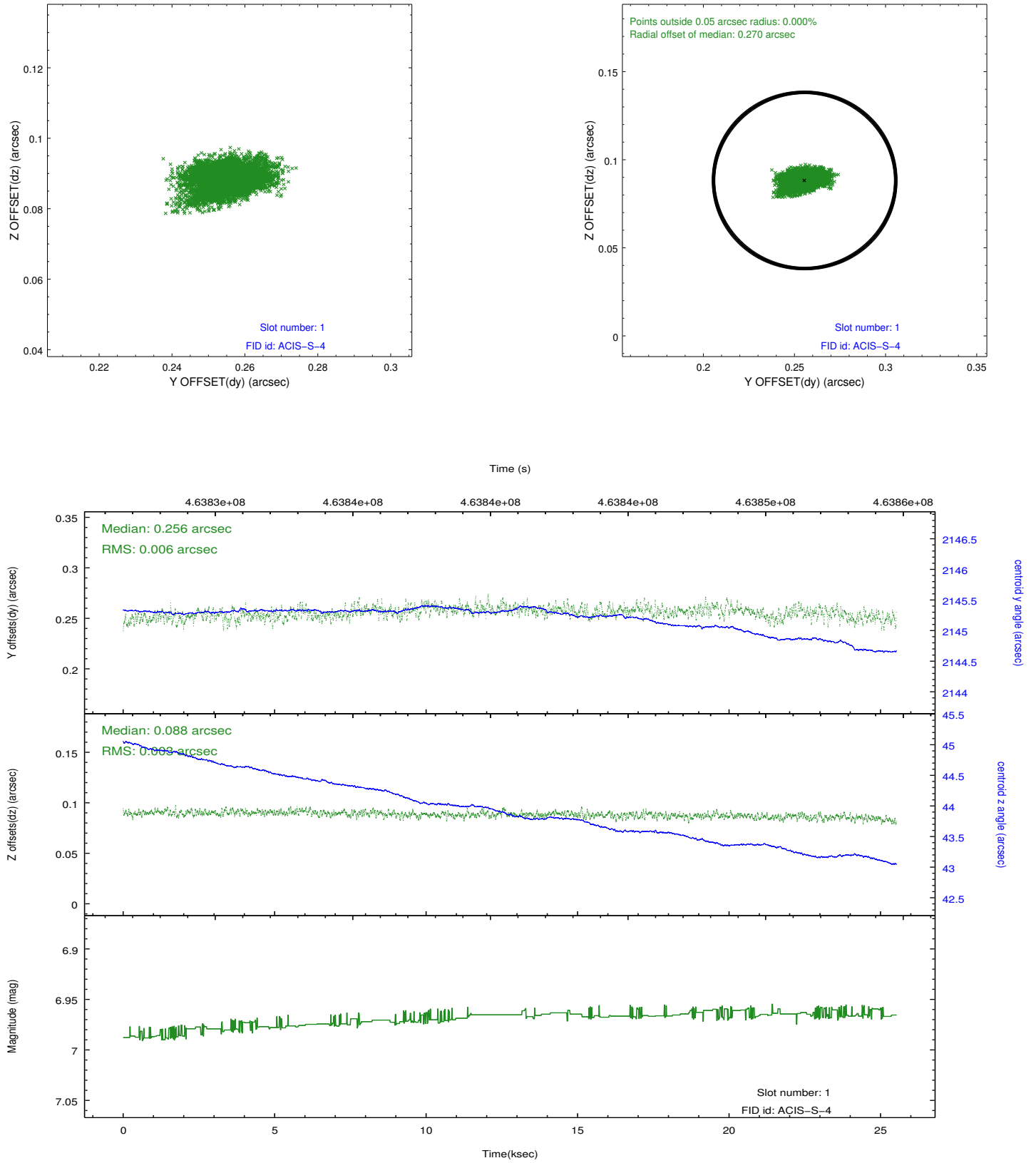


2.5 FID Slots

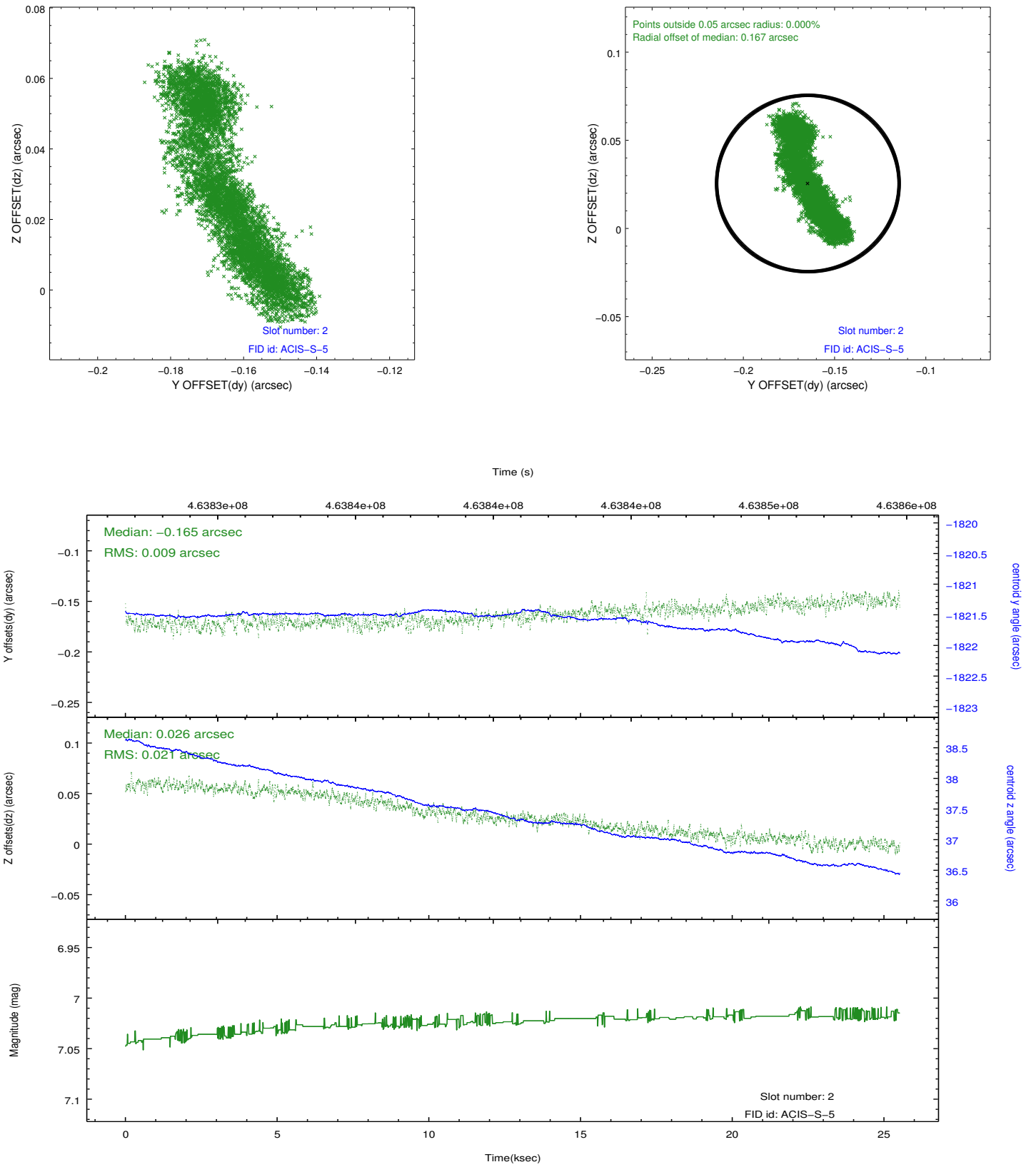
2.5.1 Slot 0



2.5.2 Slot 1

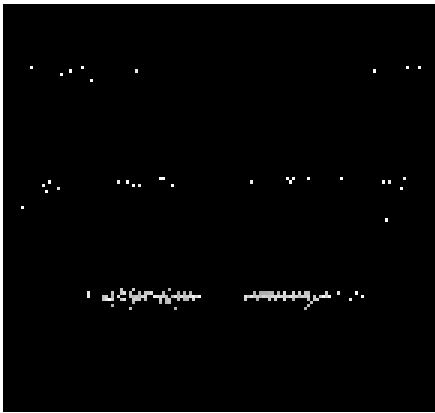


2.5.3 Slot 2

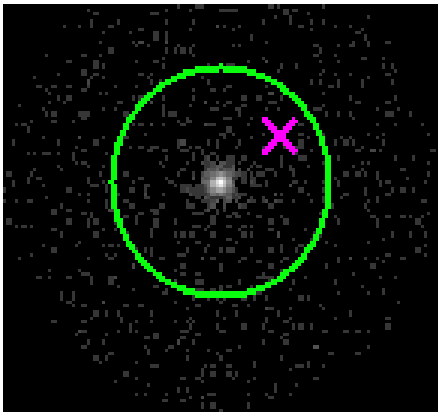


3 Gratings

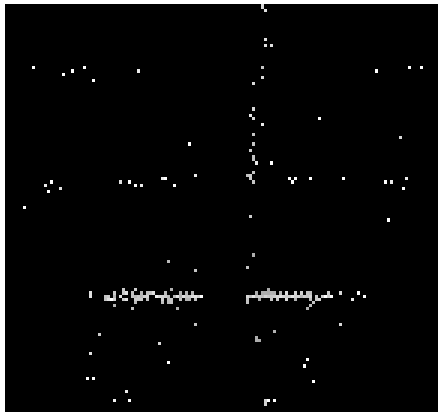
3.1 HEG Arm



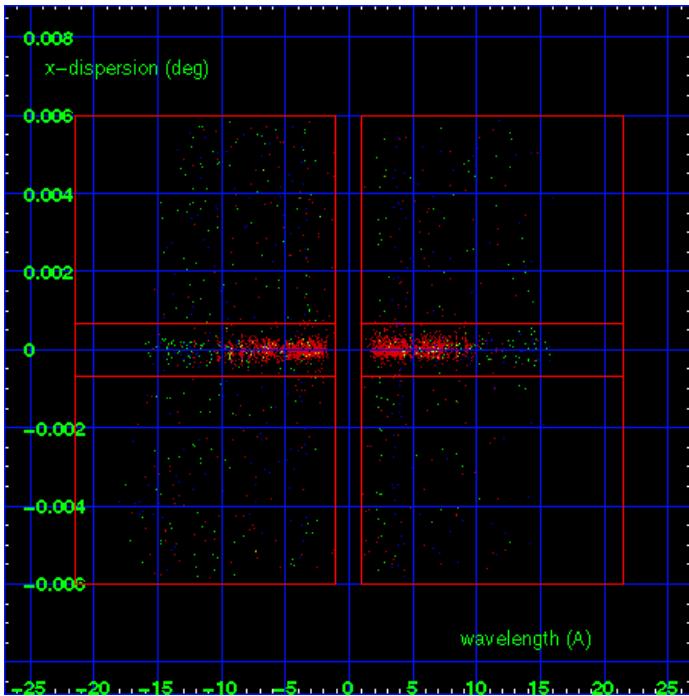
HEG Order Sort 123



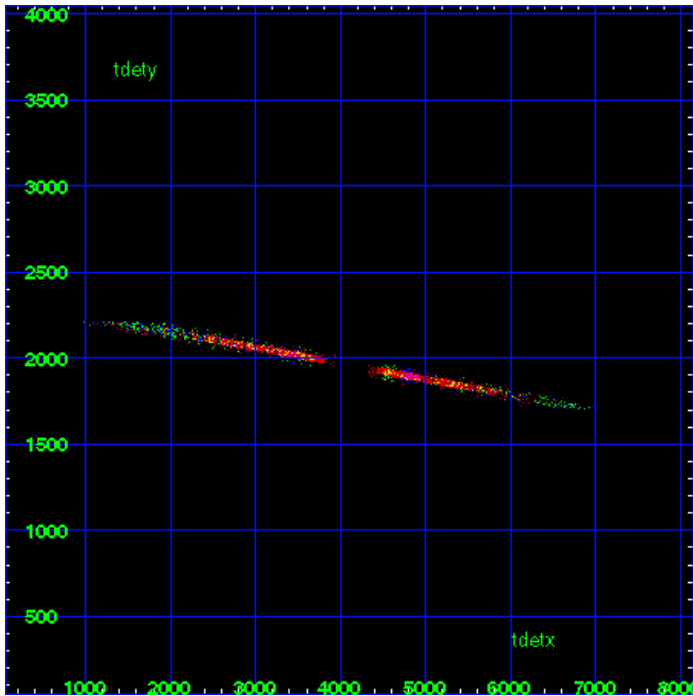
HEG Zero Order



HEG Order Sort ALL

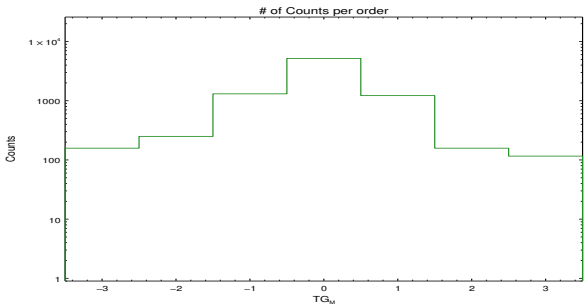


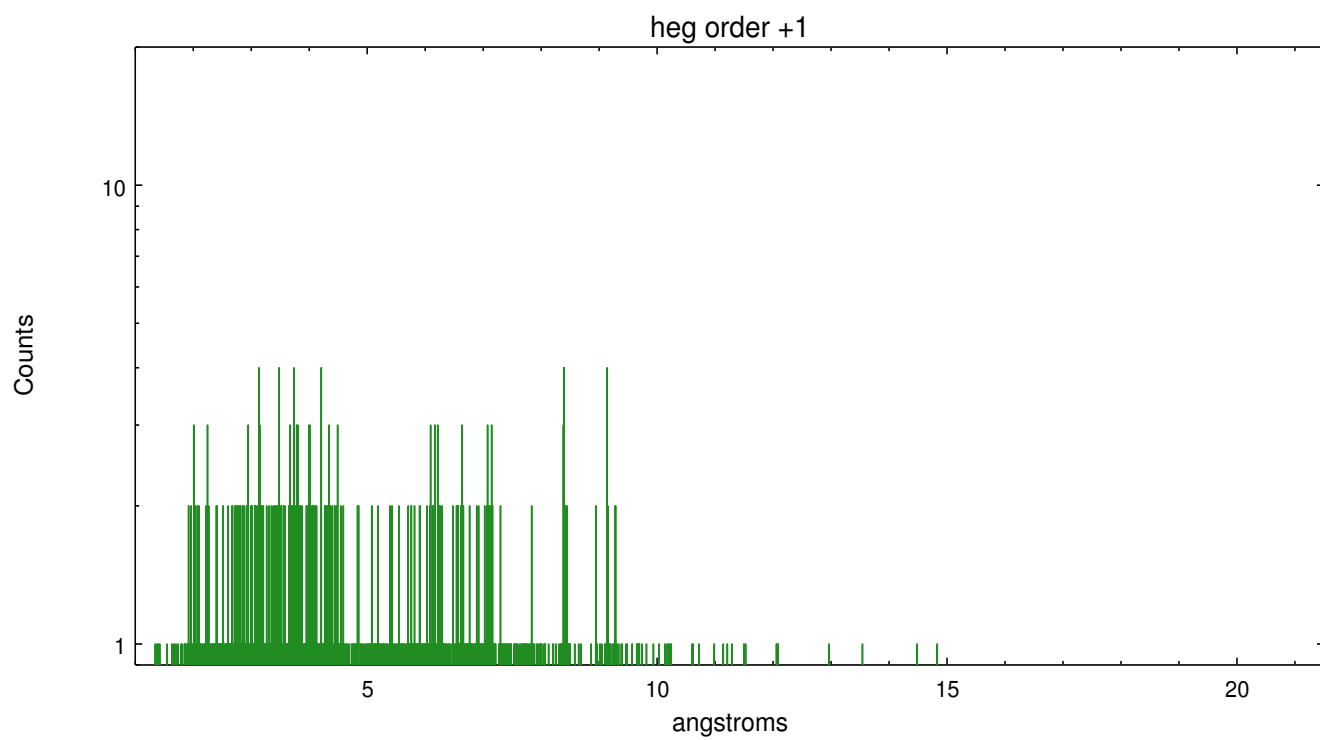
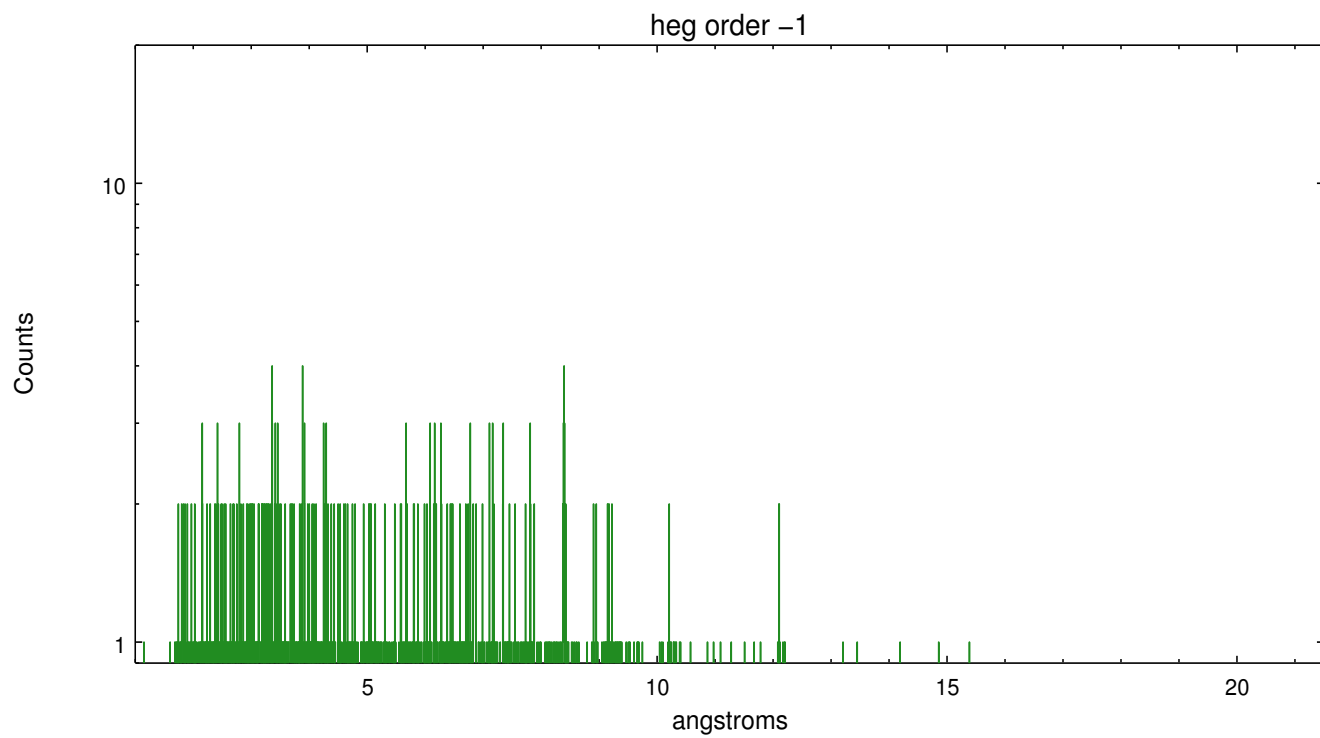
Spot Image HEG



Full Detector HEG

	order -3	order -2	order -1	order 0	order 1	order 2	order 3
Events	158	250	1308	5187	1221	158	116

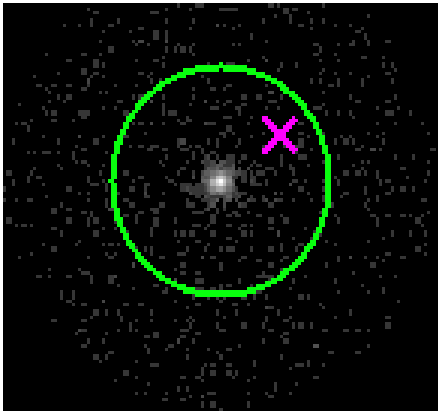




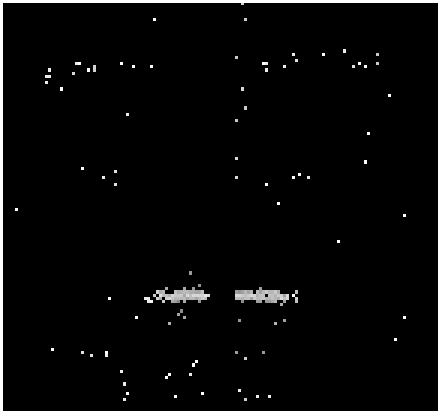
3.2 MEG Arm



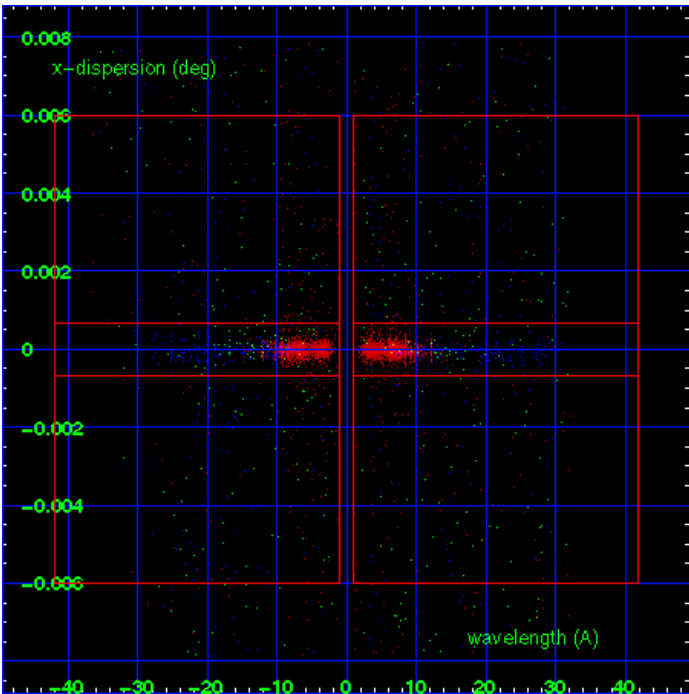
MEG Order Sort 123



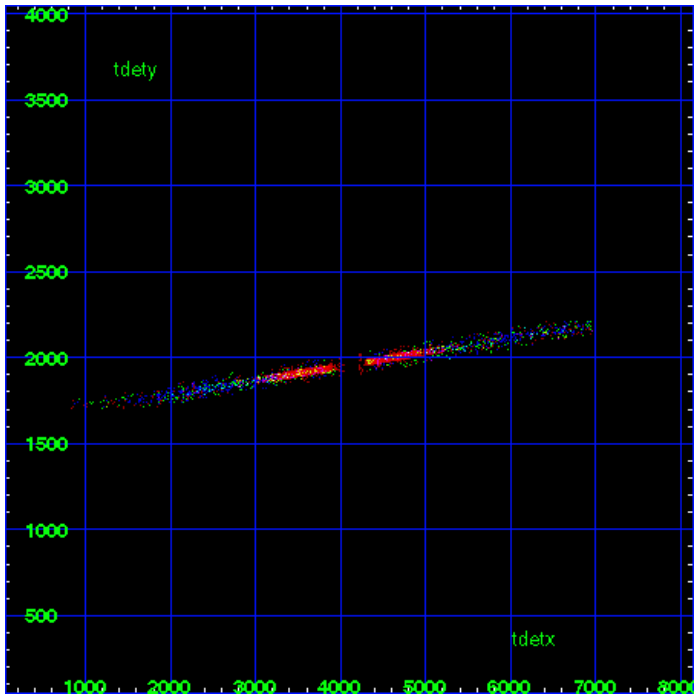
MEG Zero Order



MEG Order Sort ALL

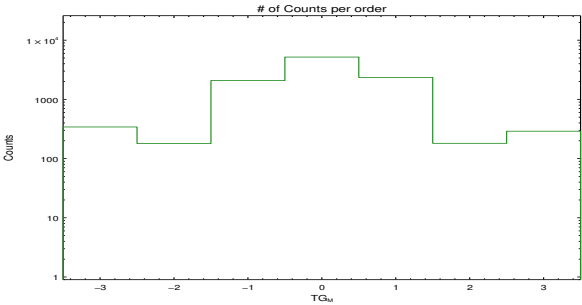


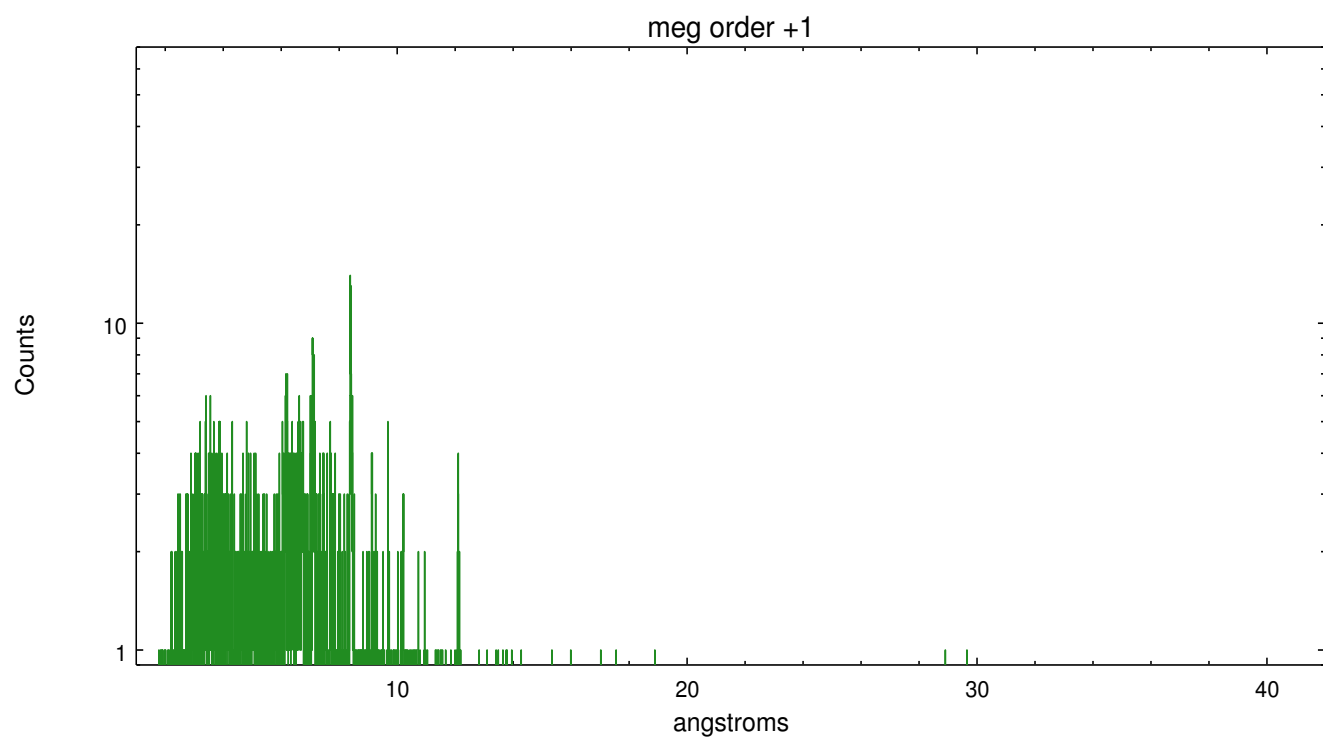
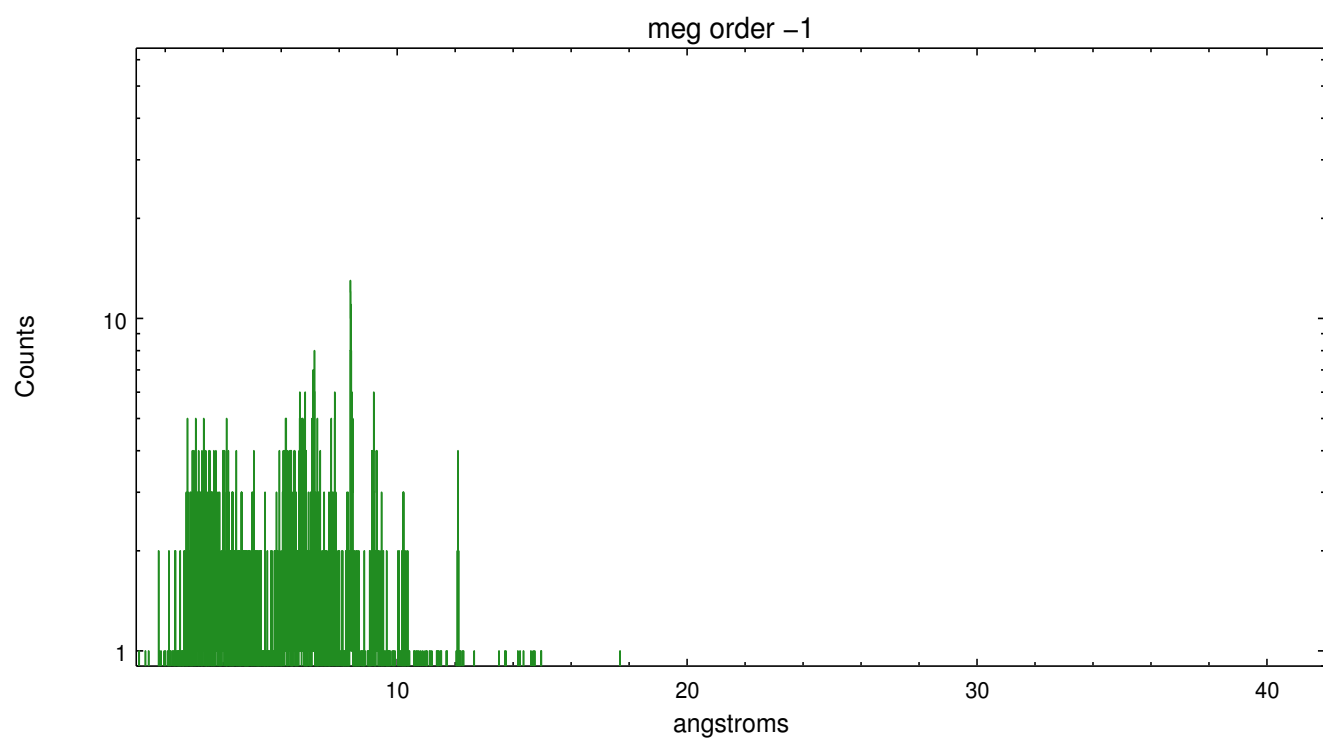
Spot Image MEG



Full Detector MEG

	order -3	order -2	order -1	order 0	order 1	order 2	order 3
Events	342	180	2077	5187	2345	181	290





A Summary

A.1 Status

V&V Scientist	Joy Nichols
V&V Date (YYYY-MM-DD)	2012.09.13
V&V Edition	1
V&V Disposition and Status	OK
V&V Charge Time	25.049134635031

A.2 Comments