

# V&V Reference Report

## L2 ASCDS Version : 8.4.3

Observation 13279 - L2 Version 2  
Chandra X-Ray Center

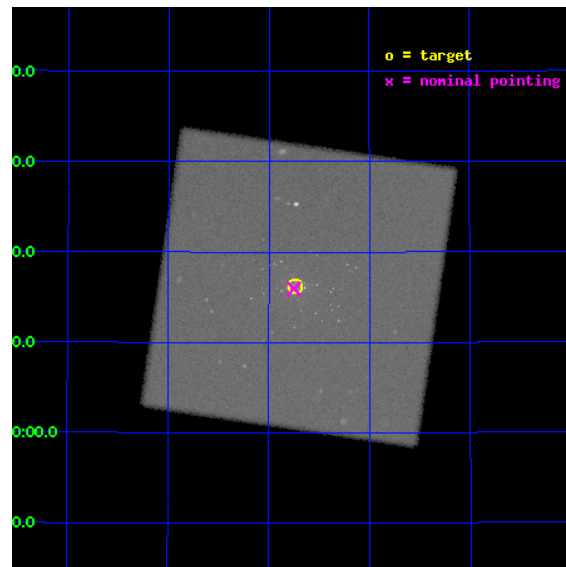
L2 Processing Date : Jul 28 2012

## Contents

<b>1</b>	<b>Front</b>	<b>2</b>
<b>2</b>	<b>OBI</b>	<b>3</b>
2.1	OBI . . . . .	3
2.1.1	Images . . . . .	3
2.1.2	Parameters . . . . .	4
2.1.3	Events . . . . .	4
2.2	Compared Parameters . . . . .	5
2.3	Aspect . . . . .	6
2.4	Star Slots . . . . .	9
2.4.1	Slot 3 . . . . .	9
2.4.2	Slot 4 . . . . .	10
2.4.3	Slot 5 . . . . .	11
2.4.4	Slot 6 . . . . .	12
2.4.5	Slot 7 . . . . .	13
2.5	FID Slots . . . . .	14
2.5.1	Slot 0 . . . . .	14
2.5.2	Slot 1 . . . . .	15
2.5.3	Slot 2 . . . . .	16
<b>A</b>	<b>Summary</b>	<b>17</b>
A.1	Status . . . . .	17
A.2	Comments . . . . .	17

# 1 Front

seq_num	300299	Sequence number
obs_id	13279	Observation id
title	Resolving short supersoft source states of optical novae in the core of M31	Proposal title
observer	Dr. Peter Predehl	Principal investigator
object	M31	Source name
ra_targ	10.684583	Observer's specified target RA [deg]
dec_targ	41.269278	Observer's specified target Dec [deg]
ra_nom	10.687652850978	Nominal RA [deg]
dec_nom	41.265641343962	Nominal Dec [deg]
roll_nom	323.39507096066	Nominal Roll [deg]
revision	2	Processing version of data
ontime	19155.969764173	[s]
livetime	18825.96115524	Ontime multiplied by DTCOR
l2events	1367607	Number of level 2 events

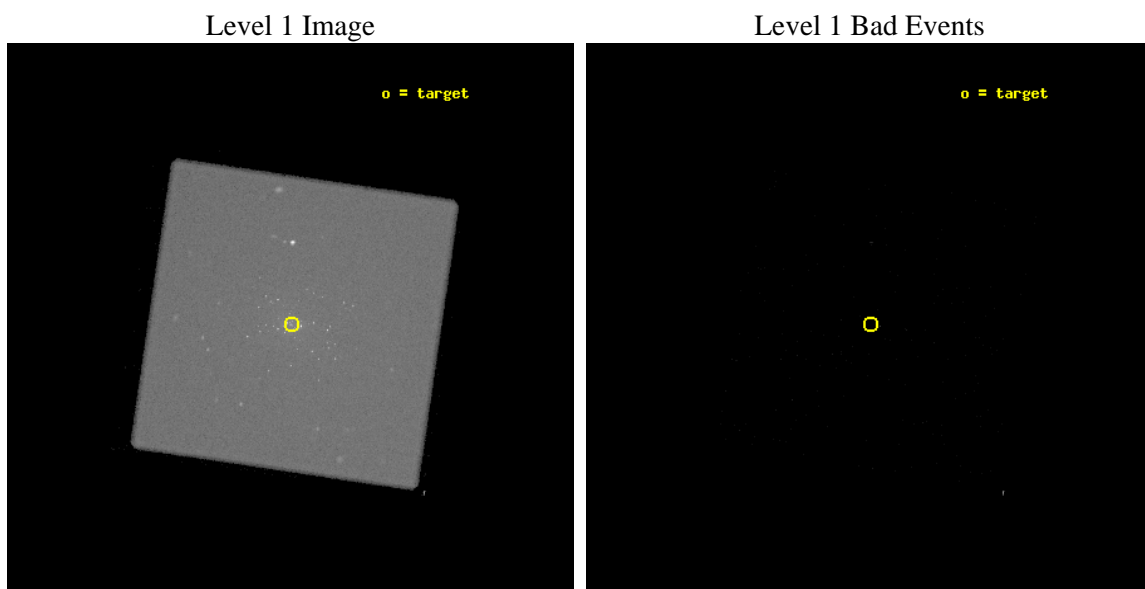




## 2 OBI

### 2.1 OBI

#### 2.1.1 Images



### 2.1.2 Parameters

obi_num	1	Obi number	sched_exp_time	19000.000000	[s] Scheduled observation exposure time
ascdsver	8.4.5	Processing system revision	ontime	19155.969764173	[s]
caldsver	4.5.1	&#160	l1events	1969457	Number of level 1 events
date	2012-07-28T09:03:45	Date and time of file creation			
revision	2	Processing version of data			

### 2.1.3 Events

#### Level 1 Events

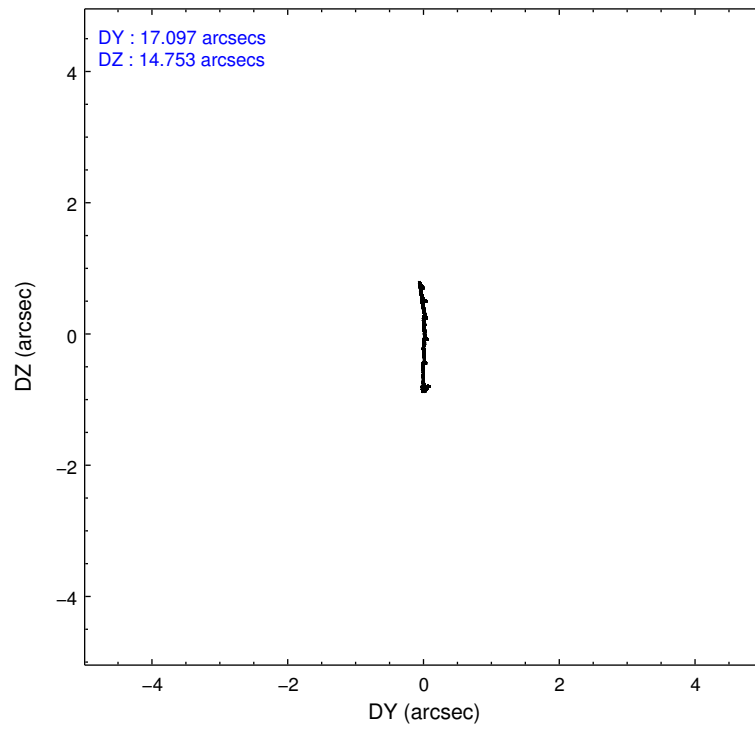
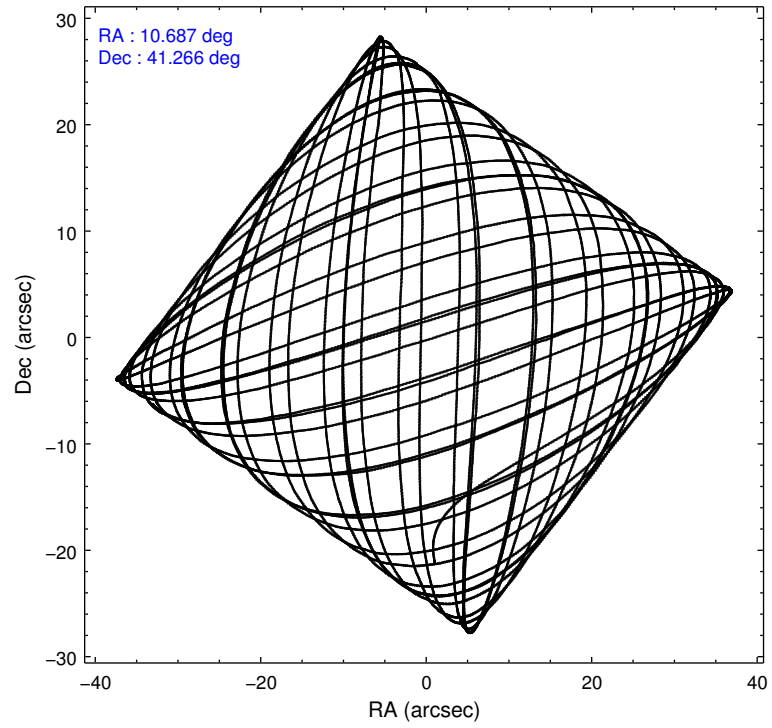
	<b>segment 0</b>
level 1 events	1969457
rejected events	104678
rejected %	5%

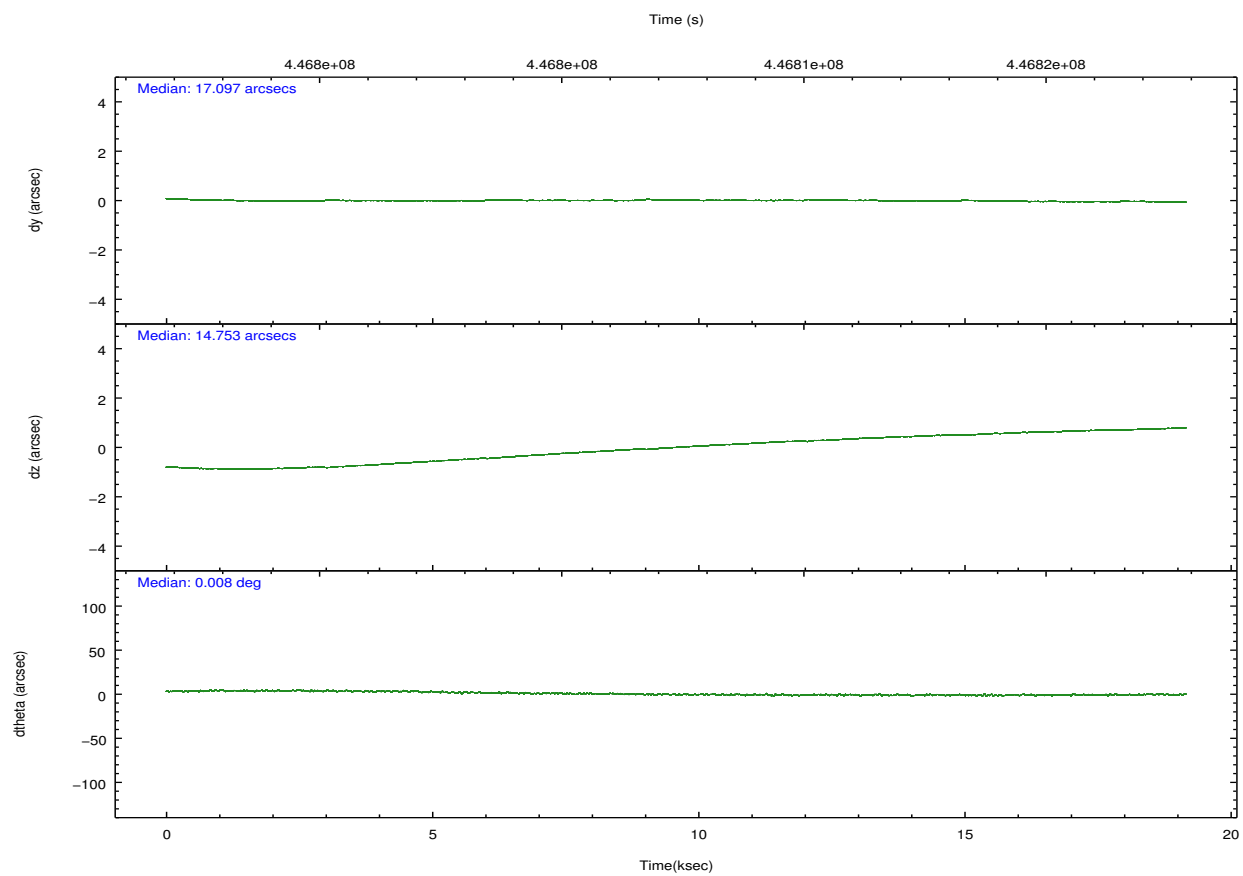
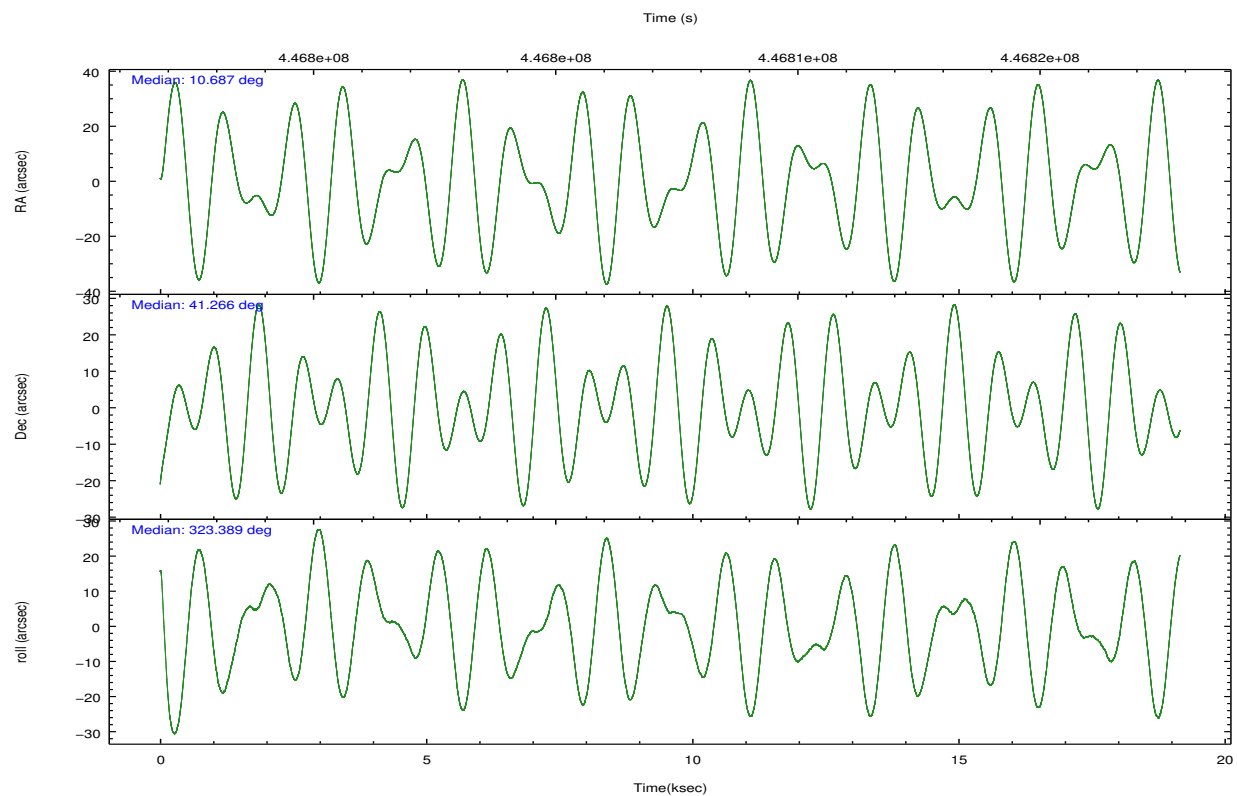
## 2.2 Compared Parameters

Parameter	Planned	Actual
Instrument	HRC	HRC
Detector	HRC-I	HRC-I
Grating	NONE	NONE
Data mode	OBSERVING	OBSERVING
Observation mode	POINTING	POINTING
[deg] Pointing RA	10.651513	10.68765285097761
[deg] Pointing Dec	41.268182	41.26564134396239
[deg] Pointing Roll	323.514397	323.3950709606594
[mm] SIM focus pos	-1.040293	-1.038866356238299
[mm] SIM defocus	0	0.001426264420575141
[mm] SIM translation stage pos	126.985494	126.9804656746847
[mm] SIM translation stage offset	0	0.005023216916882234
[s] Observation start time (MET)	446797942.184000	446796665.4996
Observation start date	2012-02-28T06:31:16	2012-02-28T06:11:05
[s] Observation end time (MET)	446816942.184000	446817674.92571
Observation end date	2012-02-28T11:47:56	2012-02-28T12:01:14

Parameter	Planned	Actual
Obspar format version number	7	7
Obspar file type	PREDICTED	ACTUAL
Obspar update status	NONE	UPDATED

## 2.3 Aspect



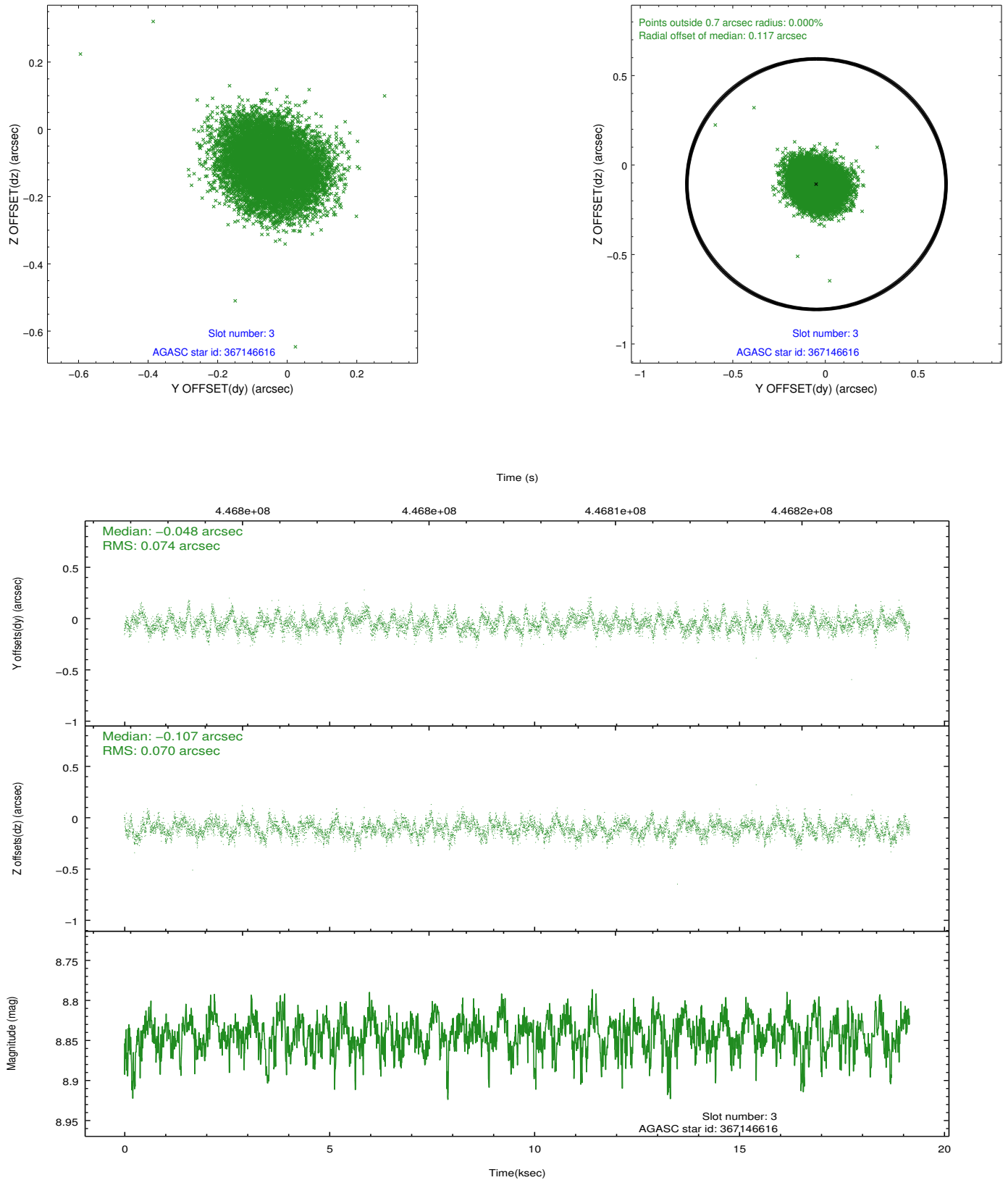


### Slot Statistics

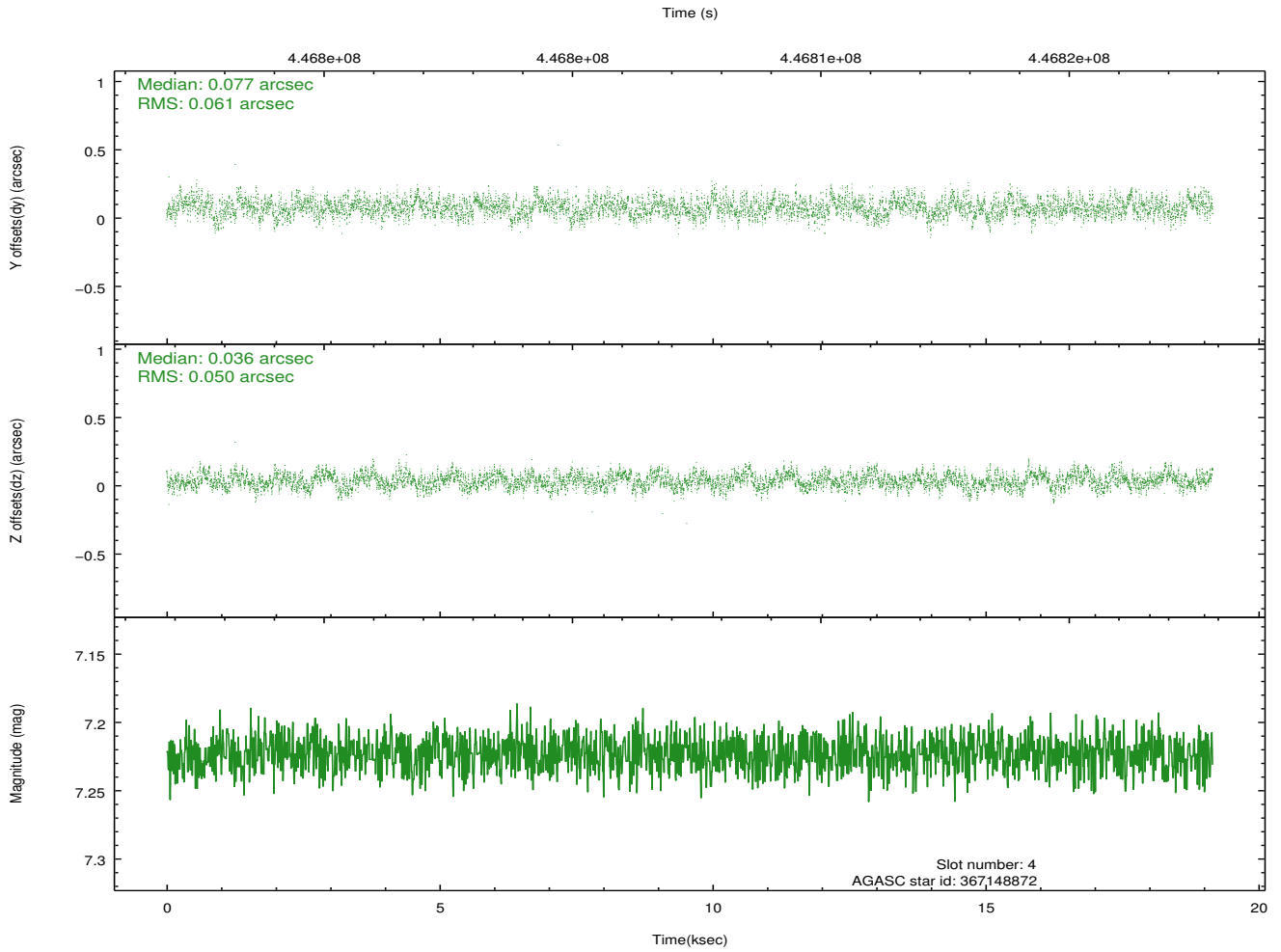
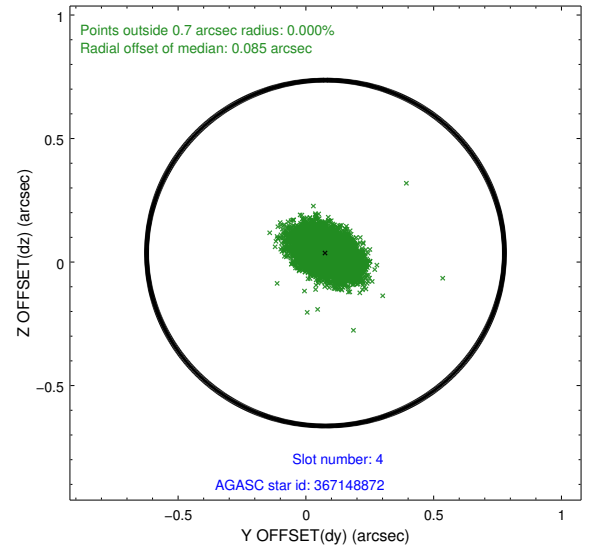
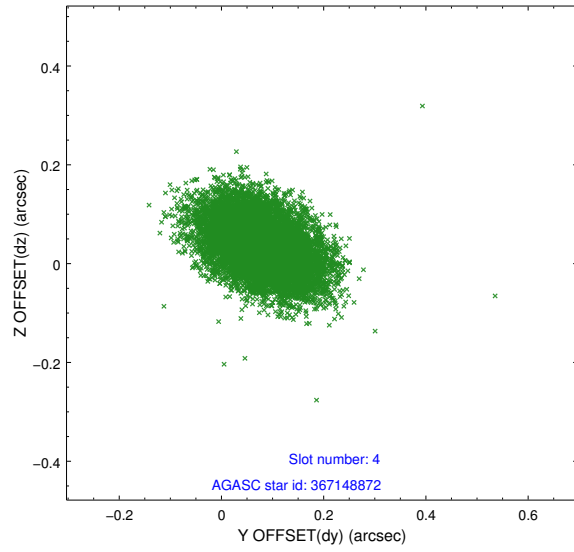
slot	status	id	mag	n_pts	med_dy	med_dz	dr1	dr2	ra	dec	mean_y	mean_z
0	FID	HRC-I-1	6.93	4673	-0.109	0.014	0.016	0.028	0.000000	0.000000	-773.05	-1302.72
1	FID	HRC-I-2	6.97	4673	0.223	-0.077	0.015	0.033	0.000000	0.000000	839.75	-1304.65
2	FID	HRC-I-3	7.01	4673	0.006	-0.024	0.012	0.021	0.000000	0.000000	-1201.27	1001.52
3	GUIDE	367146616	8.84	9326	-0.048	-0.107	0.109	0.169	11.418645	41.190163	1832.32	1017.49
4	GUIDE	367148872	7.22	9346	0.077	0.036	0.083	0.136	10.505940	40.688258	922.57	-1914.99
5	GUIDE	367657896	8.99	9288	0.089	-0.025	0.107	0.174	11.197765	41.313576	1087.71	1013.40
6	GUIDE	367663272	9.27	9329	0.005	0.106	0.116	0.188	10.656279	41.699429	-913.35	1255.01
7	GUIDE	367674552	8.84	9282	-0.123	-0.010	0.100	0.159	11.016238	41.570845	140.54	1461.97

## 2.4 Star Slots

### 2.4.1 Slot 3

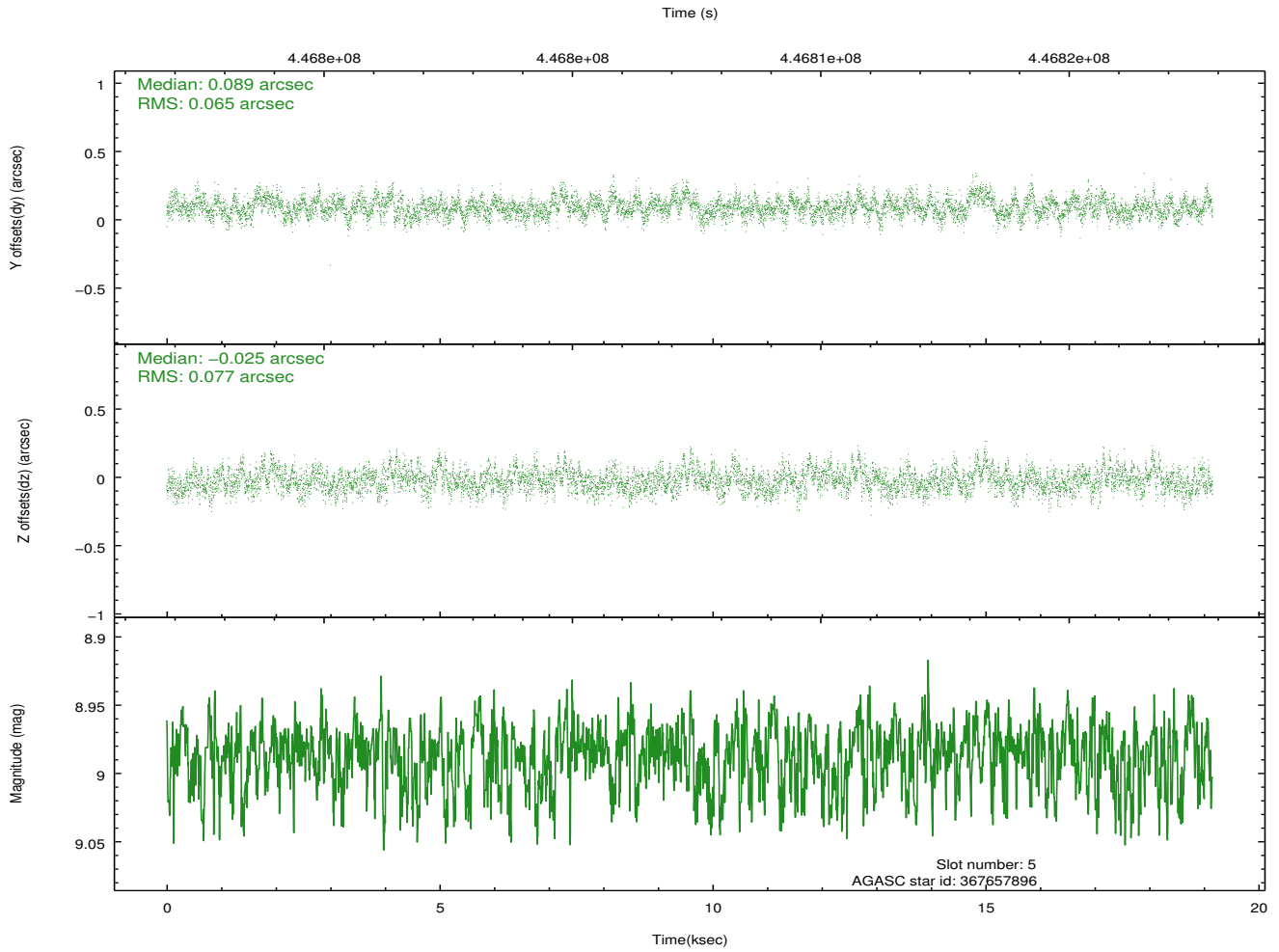
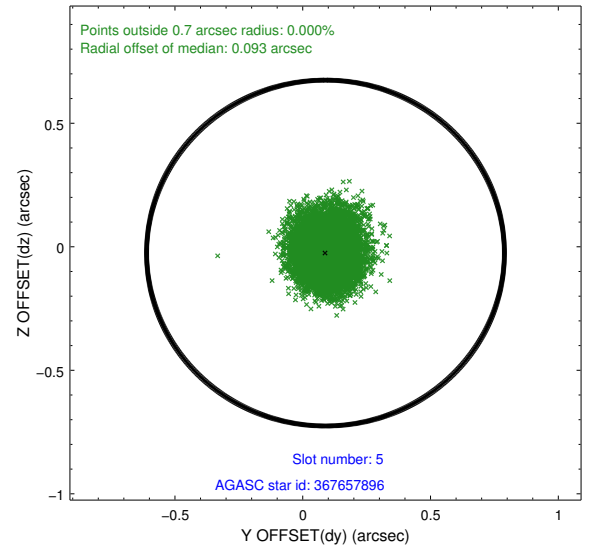
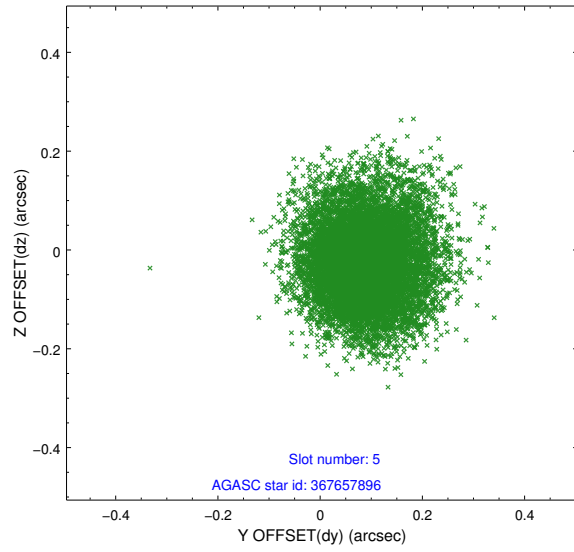


## 2.4.2 Slot 4

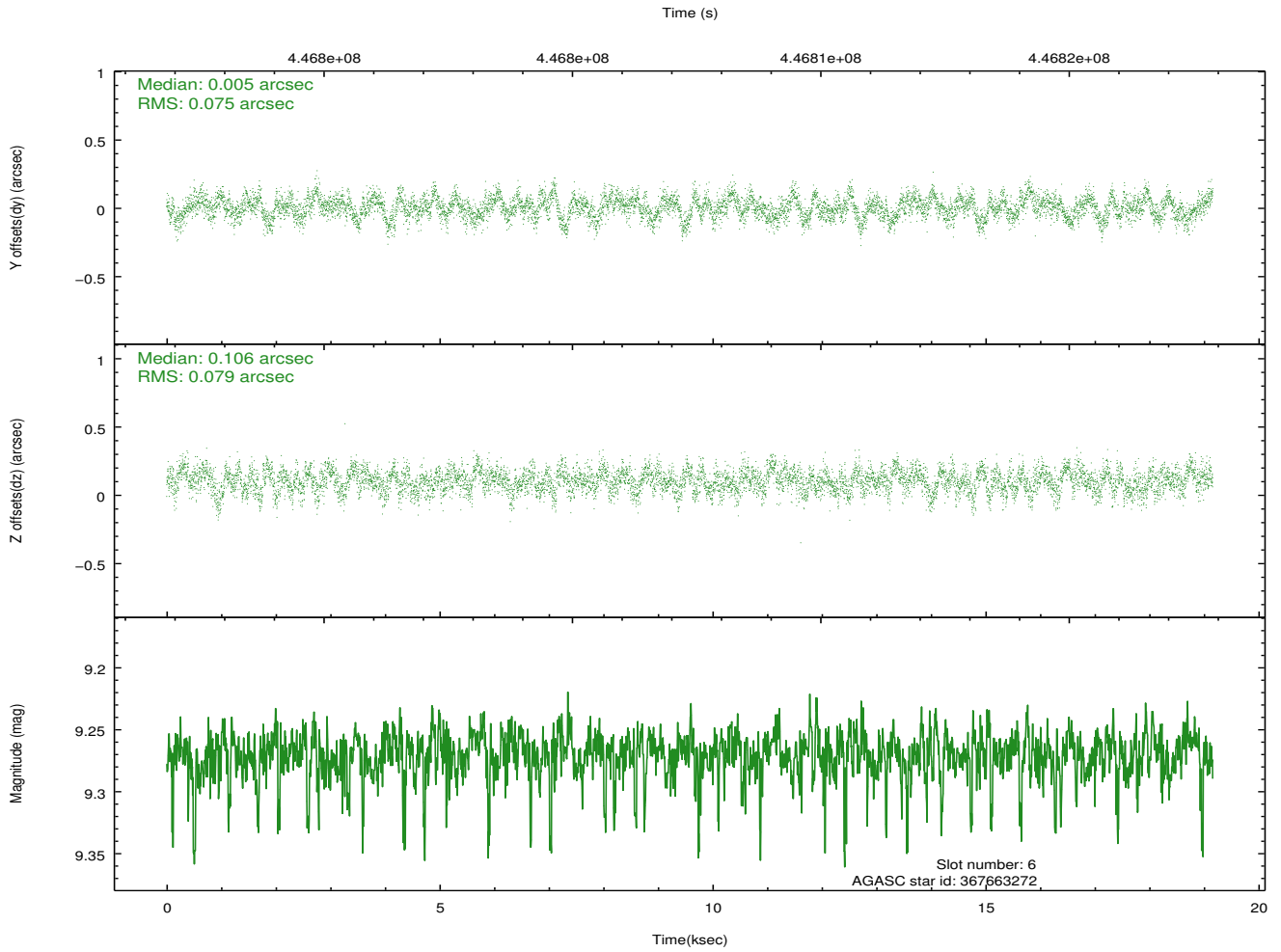
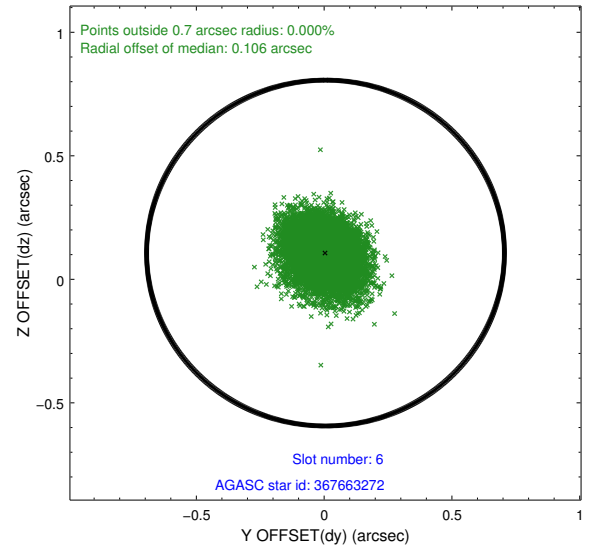
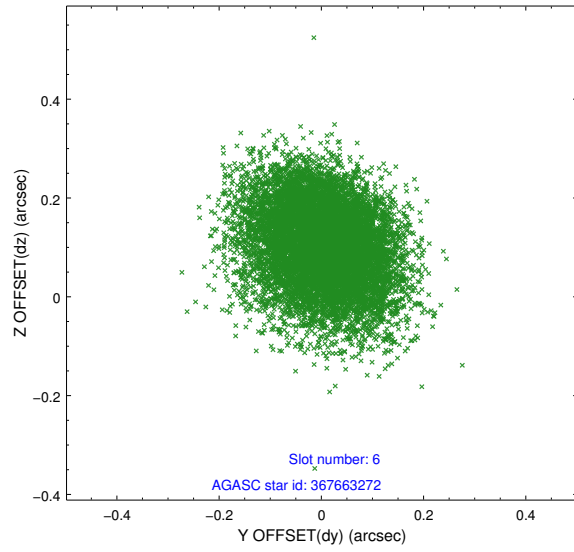




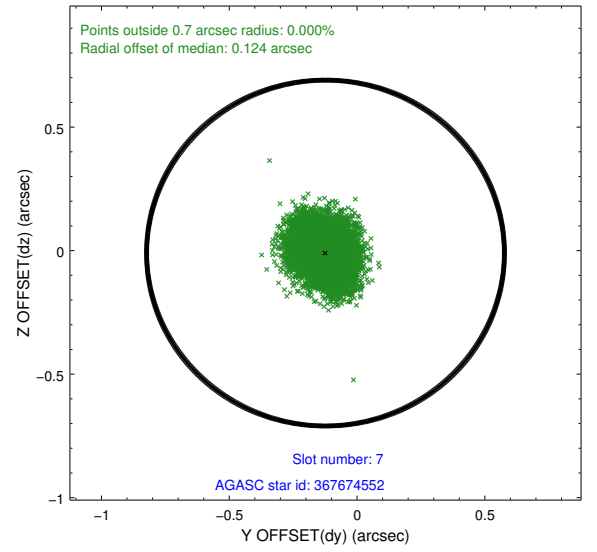
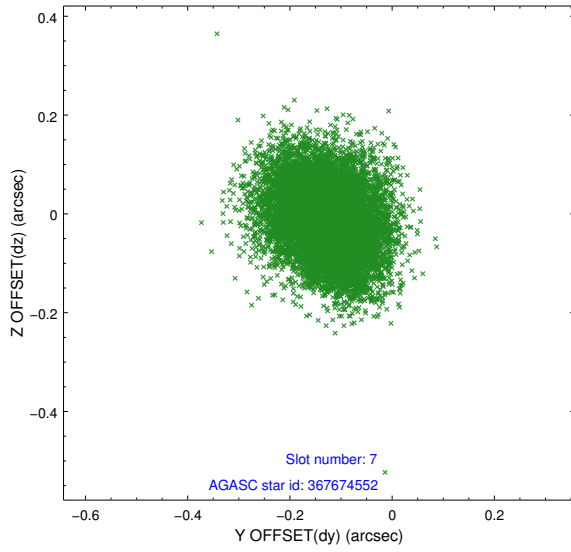
### 2.4.3 Slot 5



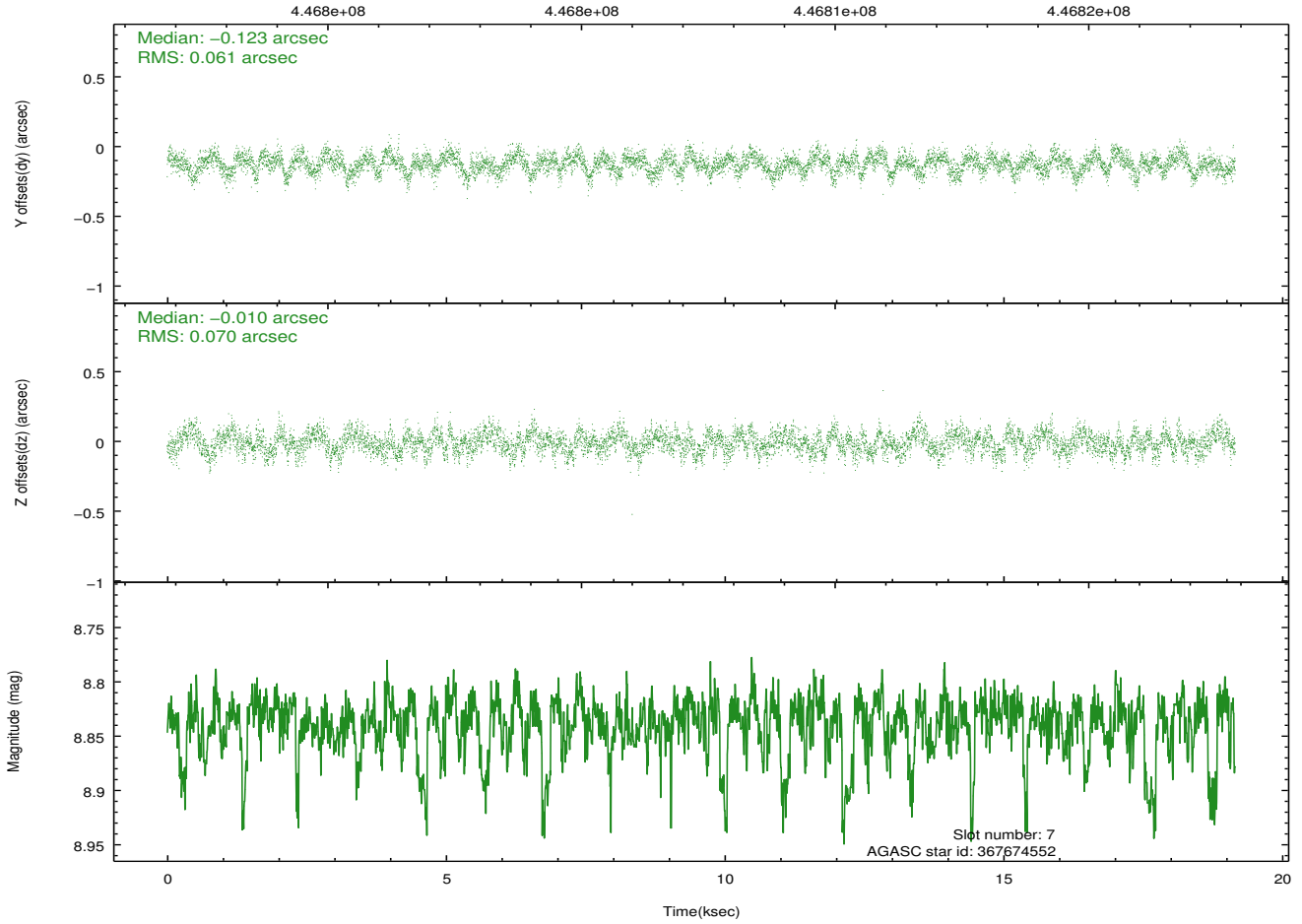
## 2.4.4 Slot 6



## 2.4.5 Slot 7

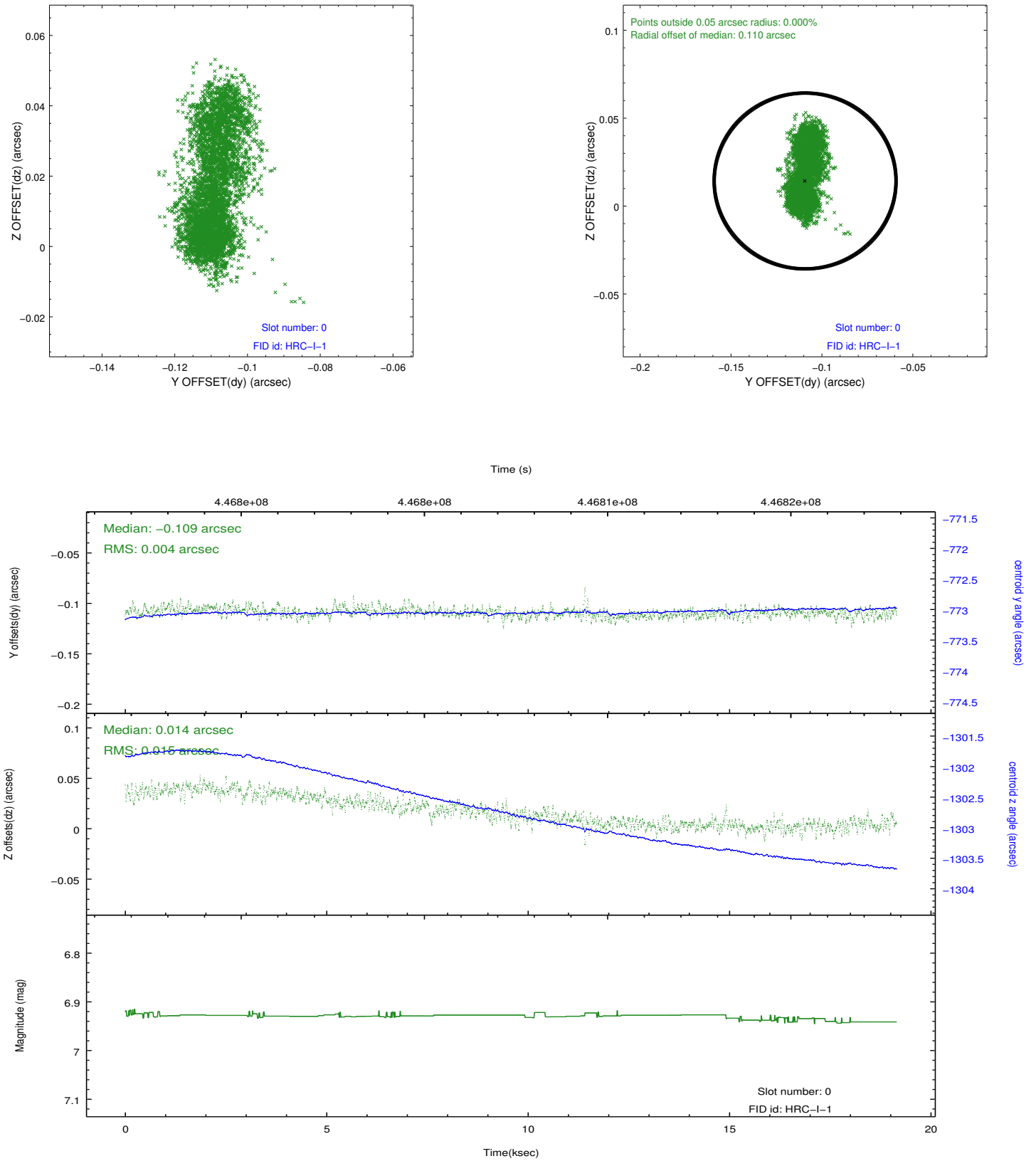


Time (s)

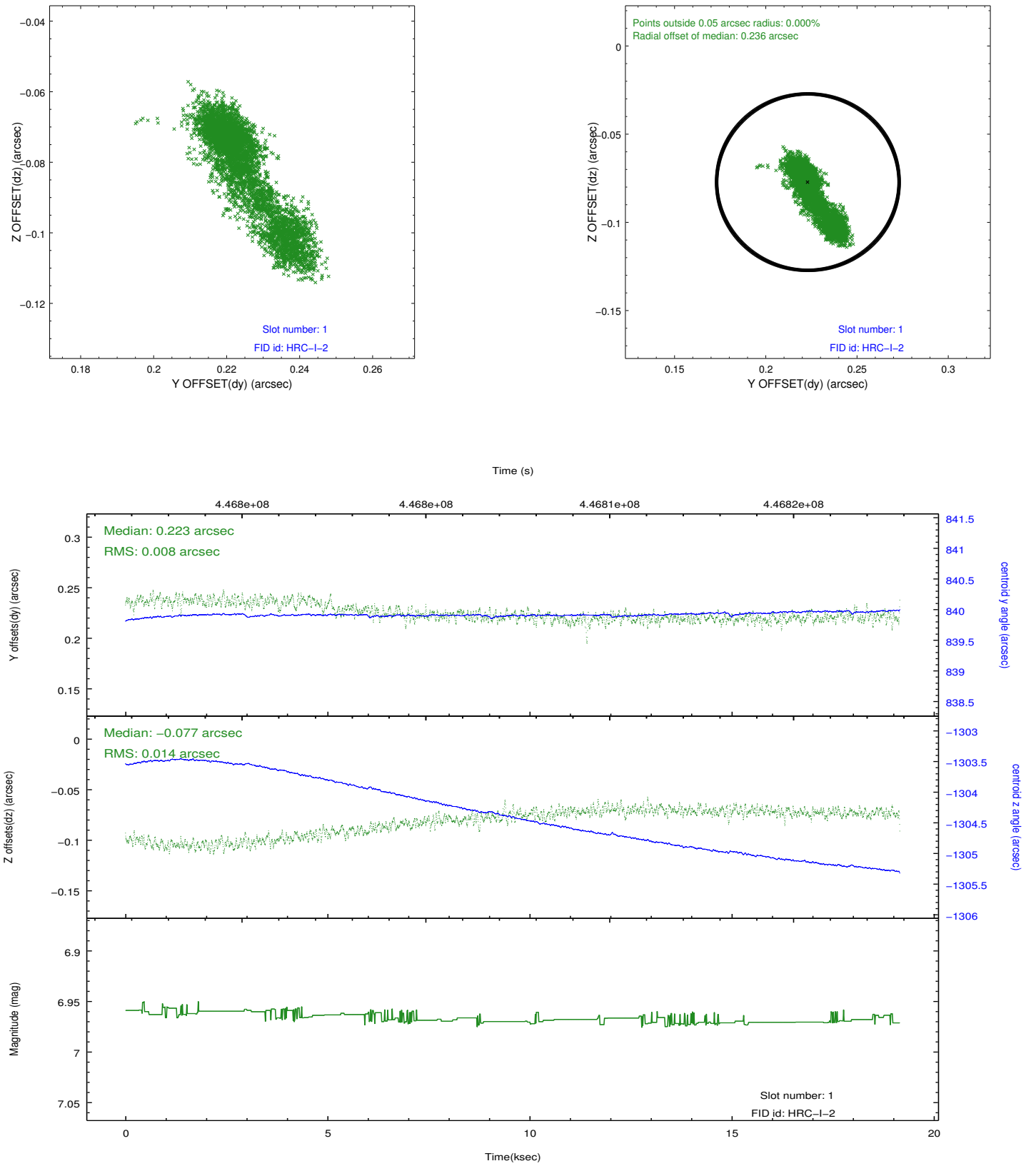


## 2.5 FID Slots

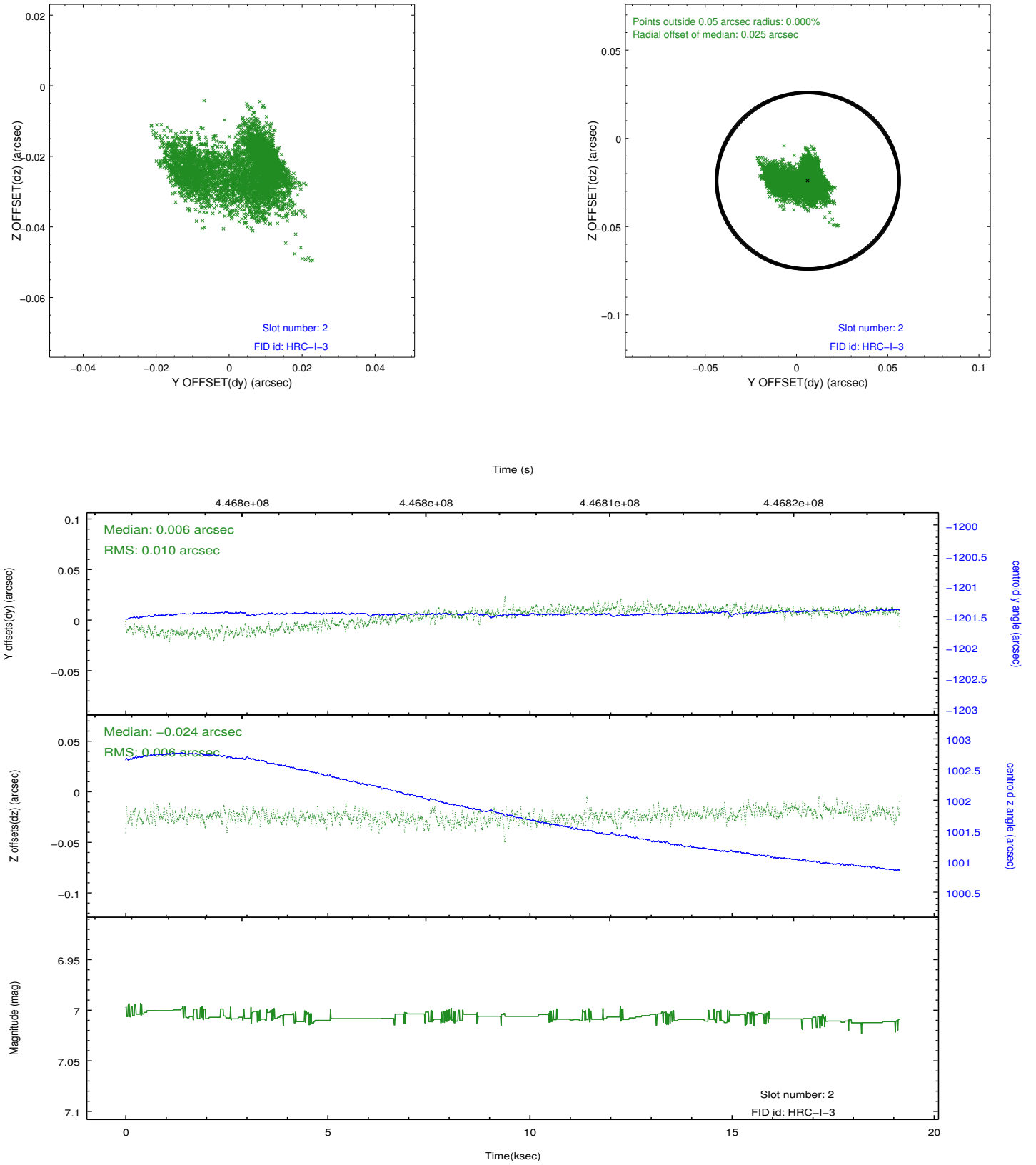
### 2.5.1 Slot 0



## 2.5.2 Slot 1



### 2.5.3 Slot 2



## A Summary

### A.1 Status

V&V Scientist	Beth Sundheim
V&V Date (YYYY-MM-DD)	2012.07.29
V&V Edition	1
V&V Disposition and Status	OK
V&V Charge Time	19.155969764173

### A.2 Comments