

V&V Reference Report

L2 ASCDS Version : 8.4.3

Observation 13231 - L2 Version 3
Chandra X-Ray Center

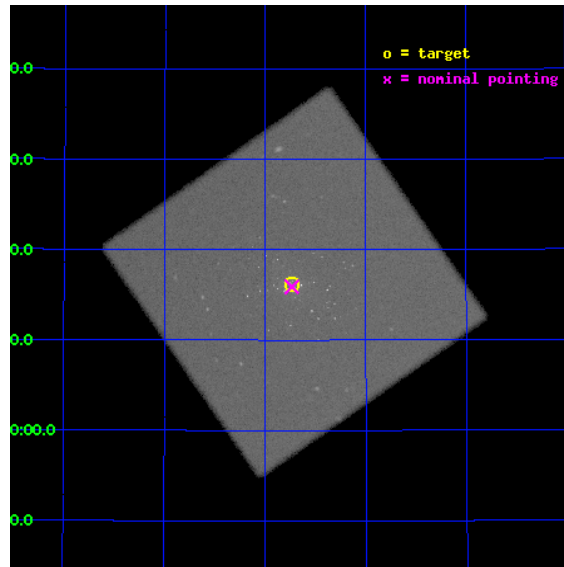
L2 Processing Date : Jul 28 2012

Contents

| | | |
|----------|-------------------------------|-----------|
| 1 | Front | 2 |
| 2 | OBI | 3 |
| 2.1 | OBI | 3 |
| 2.1.1 | Images | 3 |
| 2.1.2 | Parameters | 4 |
| 2.1.3 | Events | 4 |
| 2.2 | Compared Parameters | 5 |
| 2.3 | Aspect | 6 |
| 2.4 | Star Slots | 9 |
| 2.4.1 | Slot 3 | 9 |
| 2.4.2 | Slot 4 | 10 |
| 2.4.3 | Slot 5 | 11 |
| 2.4.4 | Slot 6 | 12 |
| 2.4.5 | Slot 7 | 13 |
| 2.5 | FID Slots | 14 |
| 2.5.1 | Slot 0 | 14 |
| 2.5.2 | Slot 1 | 15 |
| 2.5.3 | Slot 2 | 16 |
| A | Summary | 17 |
| A.1 | Status | 17 |
| A.2 | Comments | 17 |

1 Front

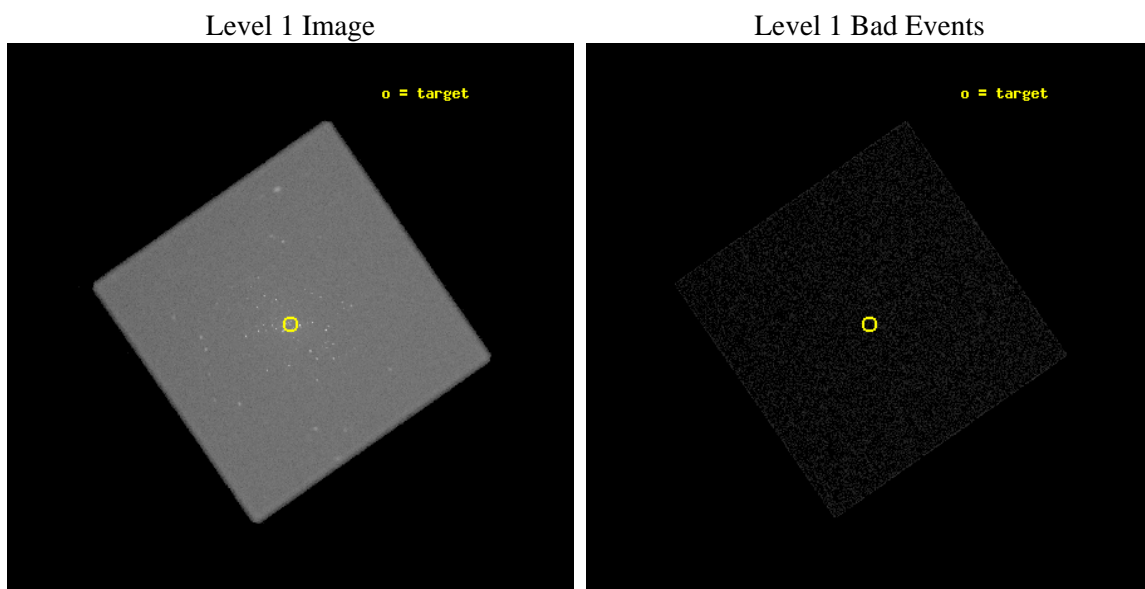
| | | |
|----------|---|---------------------------------------|
| seq_num | 300296 | Sequence number |
| obs_id | 13231 | Observation id |
| title | Resolving short supersoft source states of optical novae in the core of M31 | Proposal title |
| observer | Dr. Wolfgang Pietsch | Principal investigator |
| object | M31 | Source name |
| ra_targ | 10.684583 | Observer's specified target RA [deg] |
| dec_targ | 41.269278 | Observer's specified target Dec [deg] |
| ra_nom | 10.683548397431 | Nominal RA [deg] |
| dec_nom | 41.265156558653 | Nominal Dec [deg] |
| roll_nom | 280.22355044624 | Nominal Roll [deg] |
| revision | 3 | Processing version of data |
| ontime | 19681.026039362 | [s] |
| livetime | 19487.168227539 | Ontime multiplied by DTCOR |
| l2events | 1369043 | Number of level 2 events |



2 OBI

2.1 OBI

2.1.1 Images



2.1.2 Parameters

| | | | | | |
|----------|---------------------|--------------------------------|----------------|-----------------|---|
| obi_num | 0 | Obi number | sched_exp_time | 19500.000000 | [s] Scheduled observation exposure time |
| ascdsver | 8.4.5 | Processing system revision | ontime | 19681.026039362 | [s] |
| caldbver | 4.5.1 | | l1events | 2019655 | Number of level 1 events |
| date | 2012-07-28T06:36:06 | Date and time of file creation | | | |
| revision | 3 | Processing version of data | | | |

2.1.3 Events

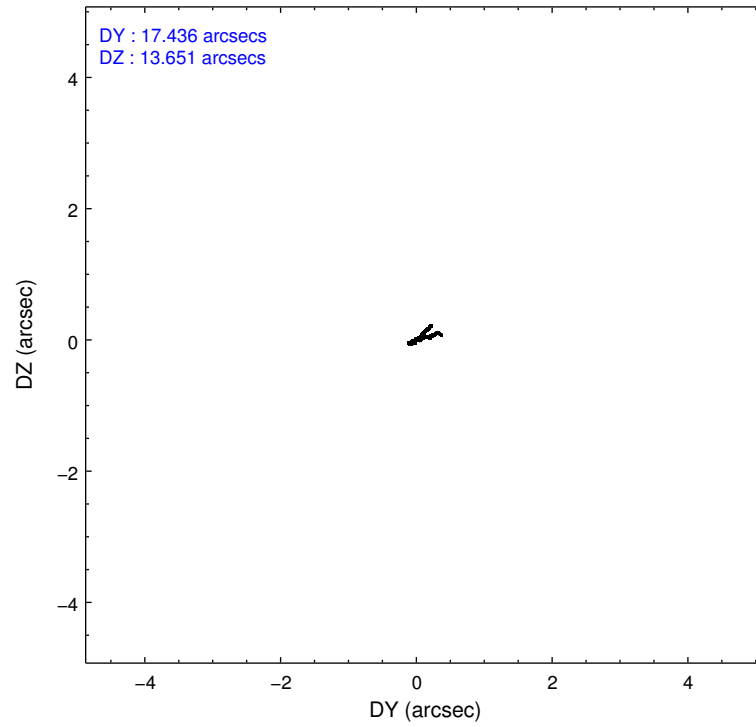
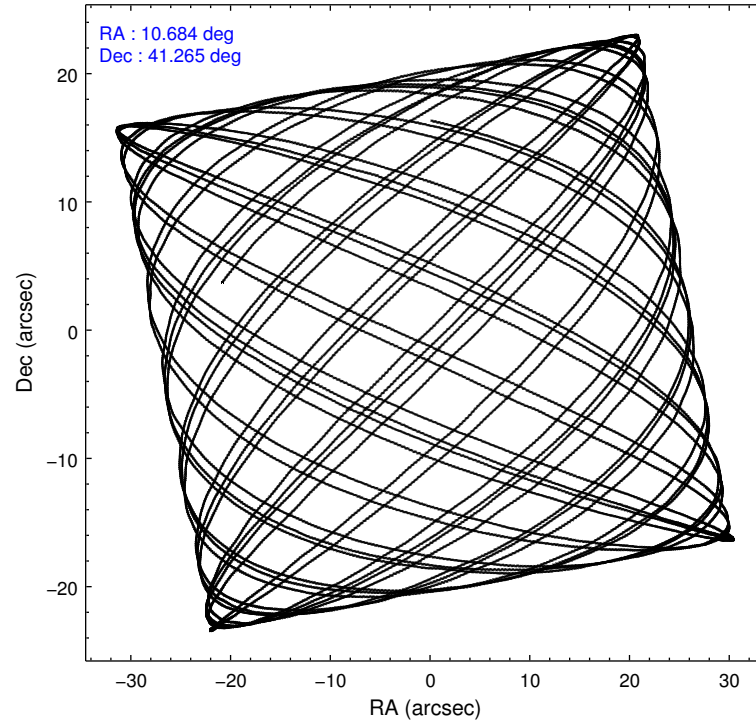
Level 1 Events

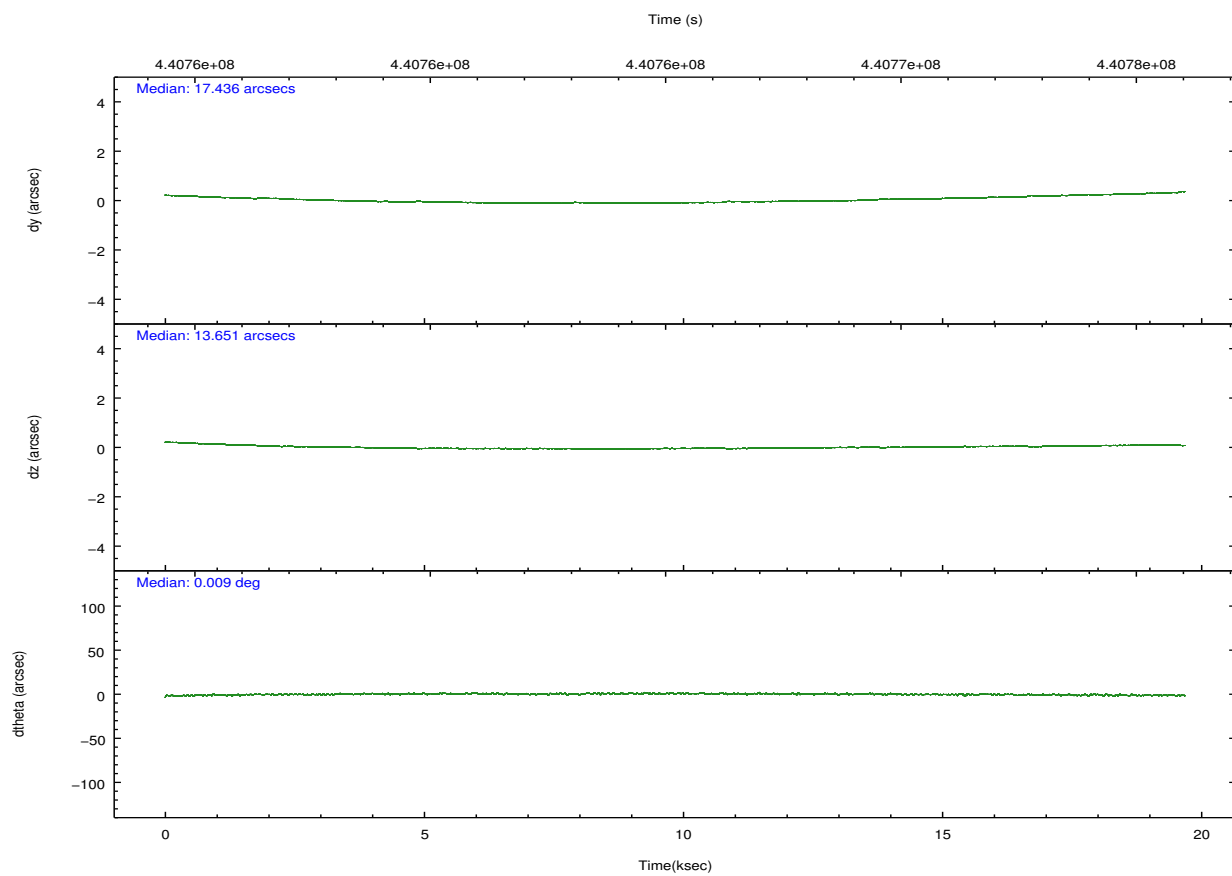
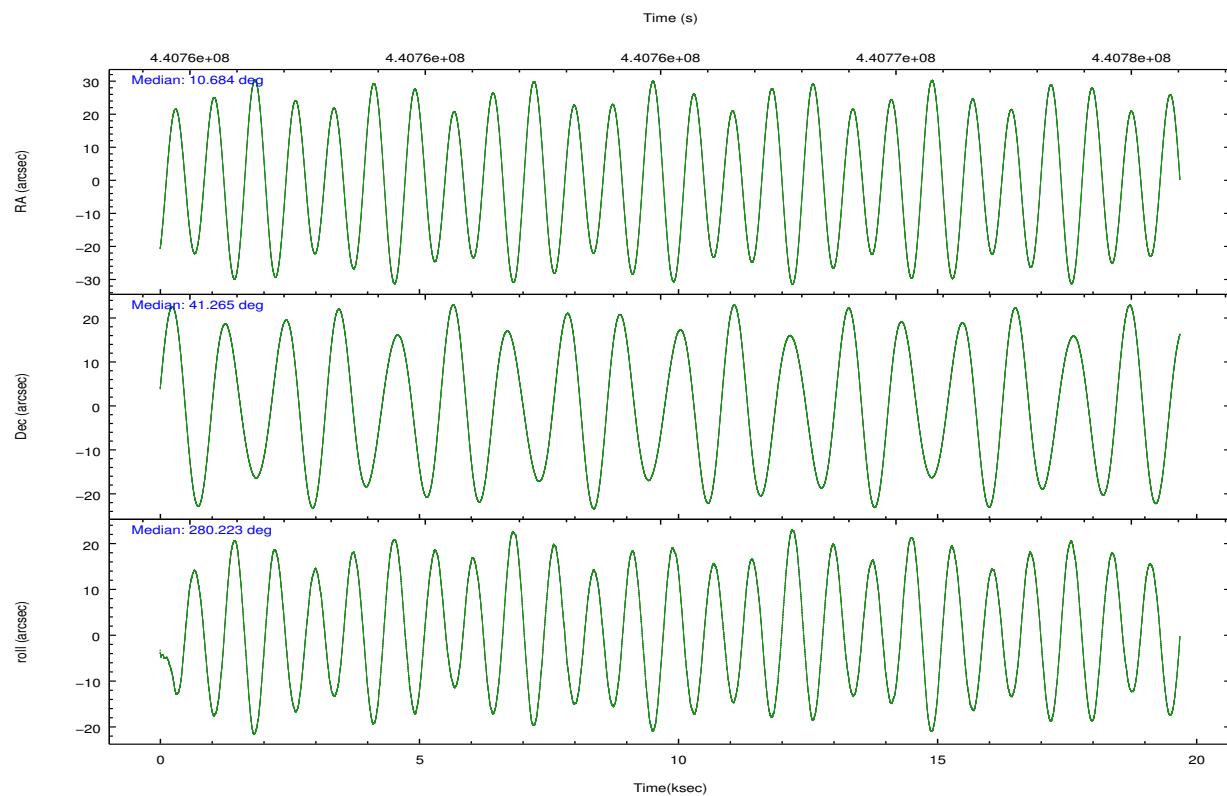
| | |
|-----------------|----------------------|
| | segment 0 |
| level 1 events | 2019655 |
| rejected events | 120294 |
| rejected % | 5% |

2.2 Compared Parameters

| Parameter | Planned | Actual | Parameter | Planned | Actual |
|-----------------------------------|---------------------|----------------------|------------------------------|-----------|---------|
| Instrument | HRC | HRC | Obspar format version number | 7 | 7 |
| Detector | HRC-I | HRC-I | Obspar file type | PREDICTED | ACTUAL |
| Grating | NONE | NONE | Obspar update status | NONE | UPDATED |
| Data mode | OBSERVING | OBSERVING | | | |
| Observation mode | POINTING | POINTING | | | |
| [deg] Pointing RA | 10.659460 | 10.68354839743069 | | | |
| [deg] Pointing Dec | 41.285489 | 41.26515655865272 | | | |
| [deg] Pointing Roll | 280.334932 | 280.2235504462446 | | | |
| [mm] SIM focus pos | -1.040293 | -1.038866356238299 | | | |
| [mm] SIM defocus | 0 | 0.001426264420575141 | | | |
| [mm] SIM translation stage pos | 126.985494 | 126.9829799899862 | | | |
| [mm] SIM translation stage offset | 0 | 0.002508901615314585 | | | |
| [s] Observation start time (MET) | 440755537.184000 | 440754864.18005 | | | |
| Observation start date | 2011-12-20T08:04:31 | 2011-12-20T07:54:24 | | | |
| [s] Observation end time (MET) | 440775037.184000 | 440775824.40616 | | | |
| Observation end date | 2011-12-20T13:29:31 | 2011-12-20T13:43:44 | | | |

2.3 Aspect



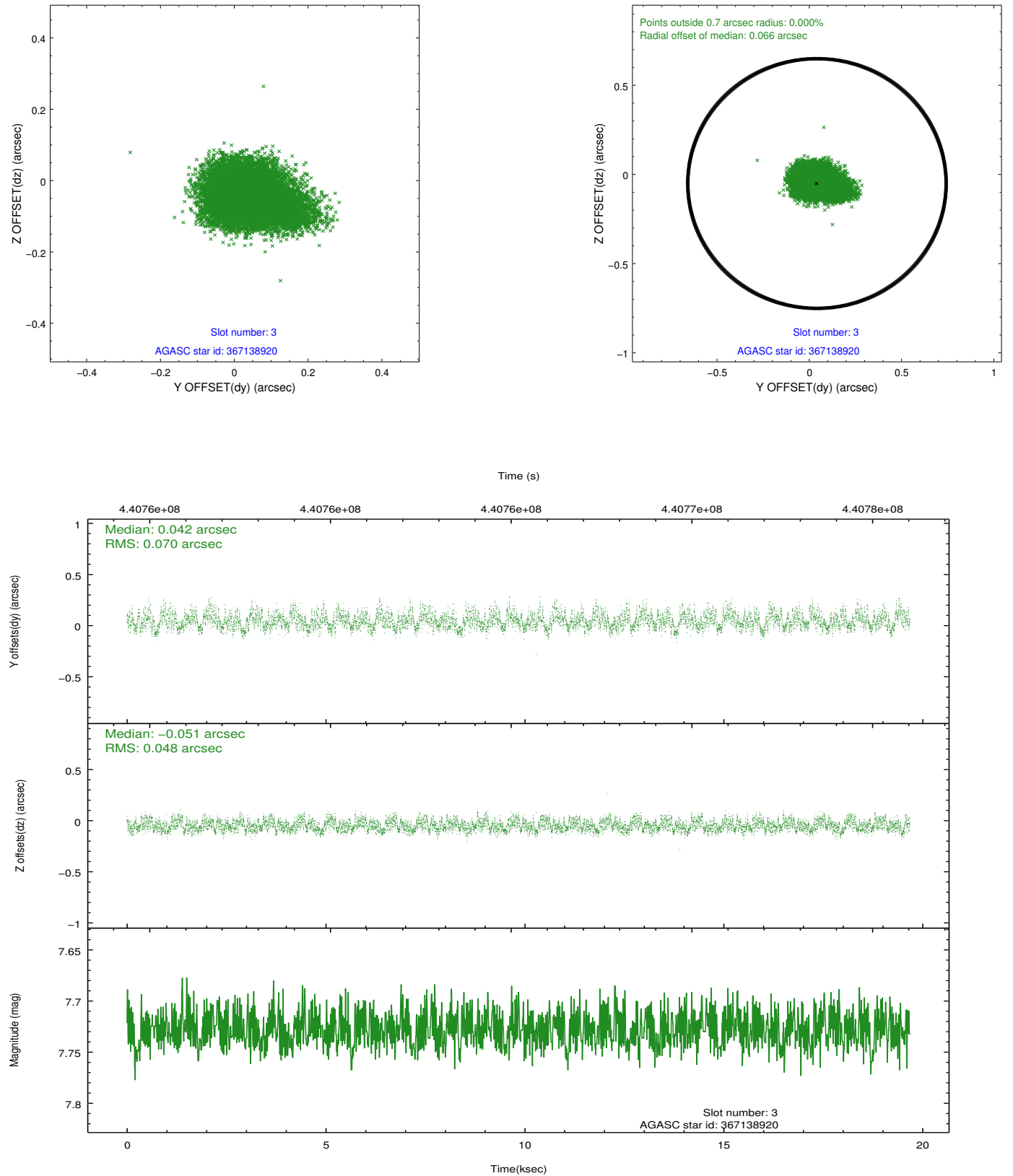


Slot Statistics

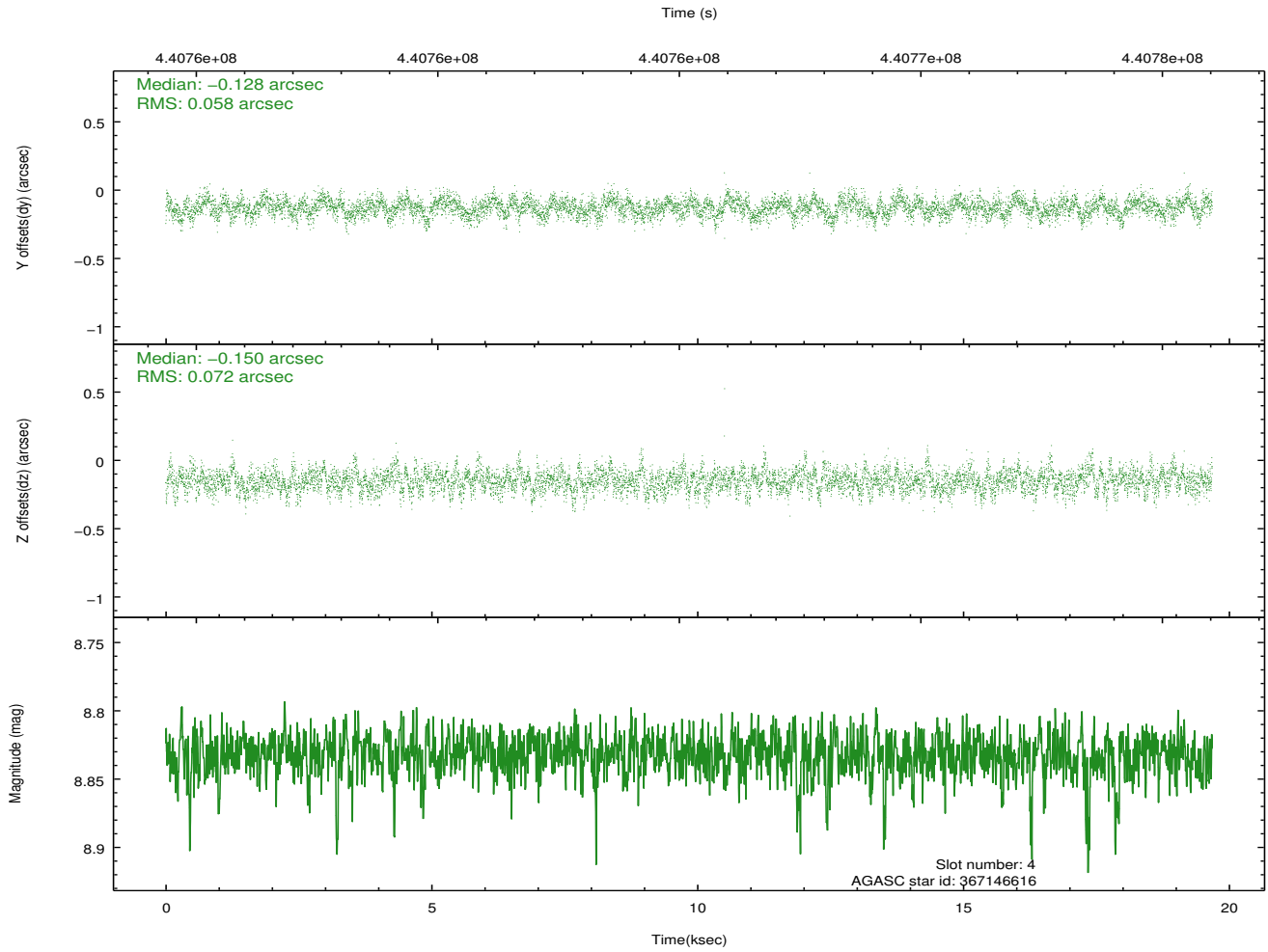
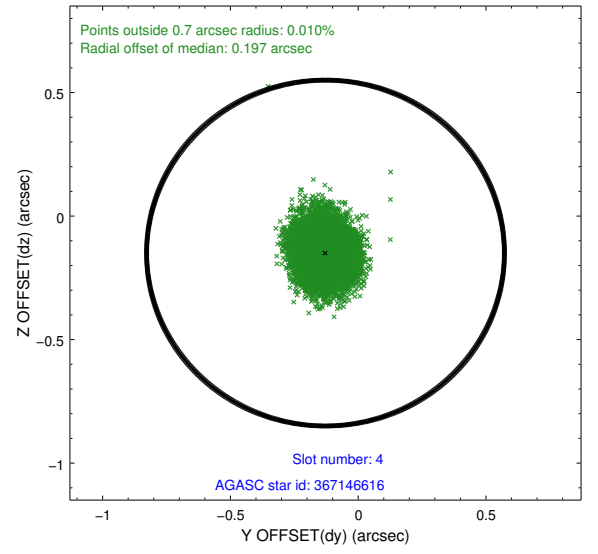
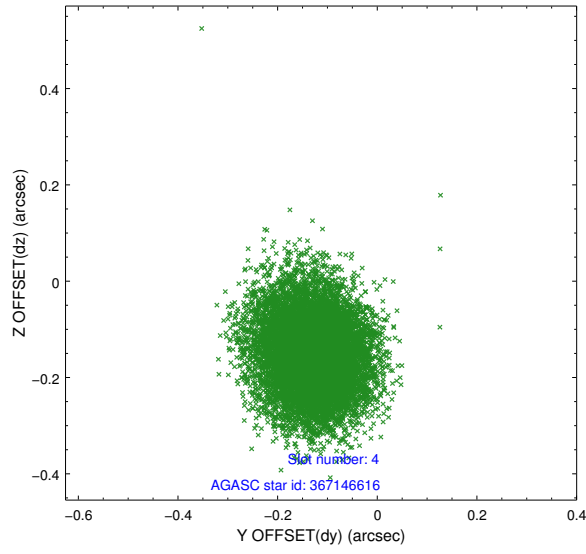
| slot | status | id | mag | n_pts | med_dy | med_dz | dr1 | dr2 | ra | dec | mean_y | mean_z |
|------|--------|-----------|------|-------|--------|--------|-------|-------|-----------|-----------|----------|----------|
| 0 | FID | HRC-I-1 | 7.03 | 4800 | -0.126 | 0.005 | 0.007 | 0.012 | 0.000000 | 0.000000 | -773.48 | -1301.70 |
| 1 | FID | HRC-I-2 | 7.06 | 4801 | 0.304 | -0.150 | 0.006 | 0.011 | 0.000000 | 0.000000 | 839.42 | -1303.70 |
| 2 | FID | HRC-I-3 | 7.12 | 4801 | -0.059 | 0.055 | 0.006 | 0.011 | 0.000000 | 0.000000 | -1201.71 | 1002.65 |
| 3 | GUIDE | 367138920 | 7.73 | 9600 | 0.042 | -0.051 | 0.091 | 0.146 | 11.513485 | 40.808909 | 2095.28 | 1984.37 |
| 4 | GUIDE | 367146616 | 8.83 | 9589 | -0.128 | -0.150 | 0.098 | 0.160 | 11.418645 | 41.190163 | 698.03 | 1963.28 |
| 5 | GUIDE | 367148872 | 7.24 | 9601 | 0.076 | 0.078 | 0.079 | 0.132 | 10.505940 | 40.688258 | 2040.70 | -798.09 |
| 6 | GUIDE | 367663272 | 9.28 | 9560 | -0.034 | 0.063 | 0.120 | 0.204 | 10.656279 | 41.699429 | -1466.88 | 257.69 |
| 7 | GUIDE | 367674552 | 8.85 | 9597 | 0.049 | 0.056 | 0.088 | 0.142 | 11.016238 | 41.570845 | -839.95 | 1130.02 |

2.4 Star Slots

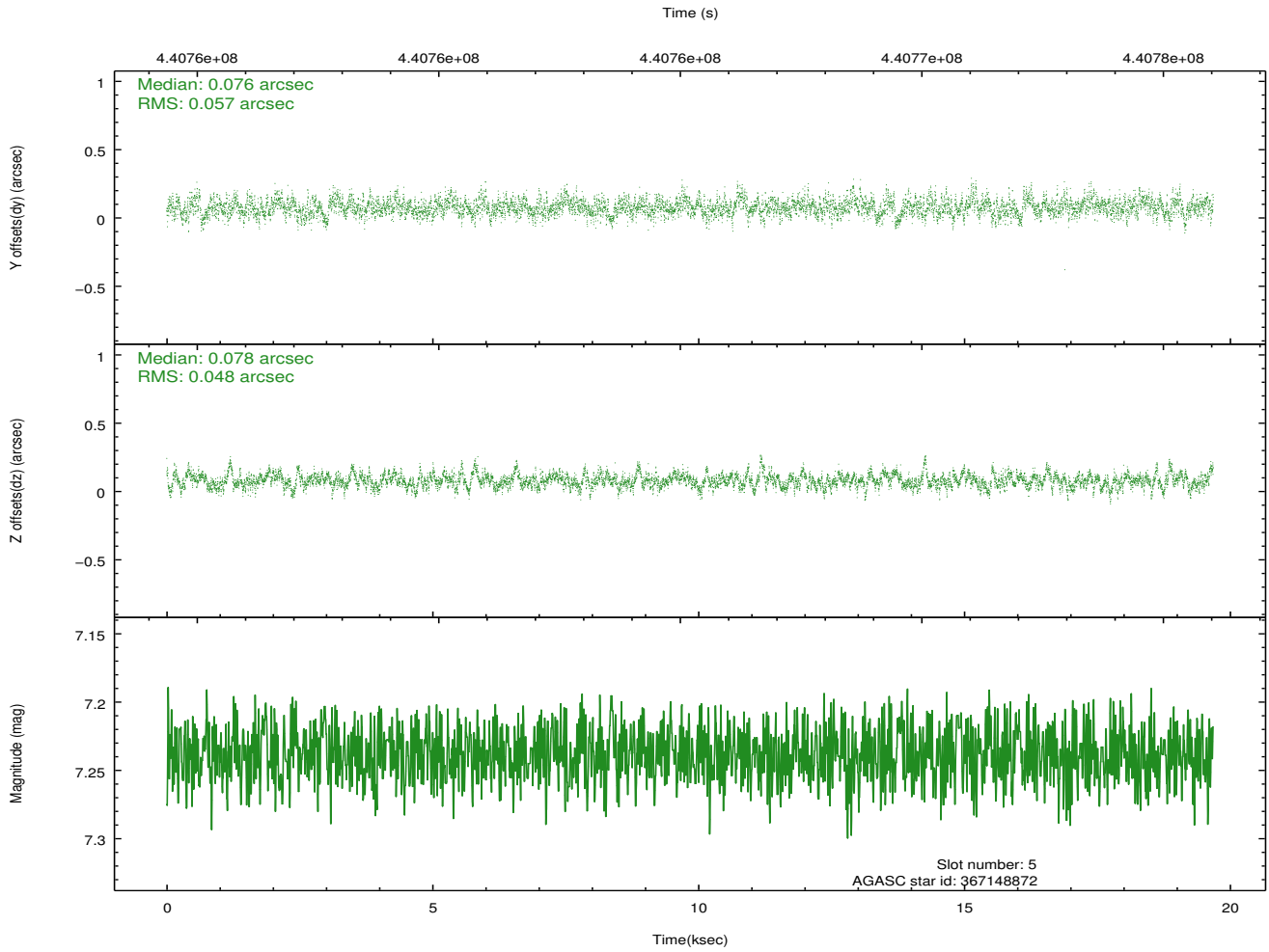
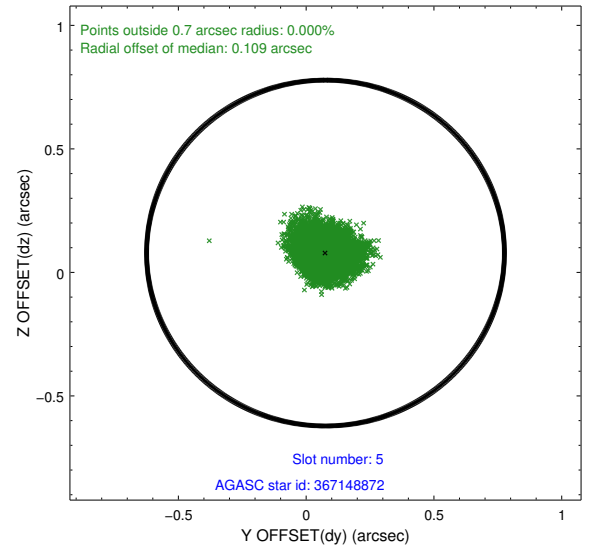
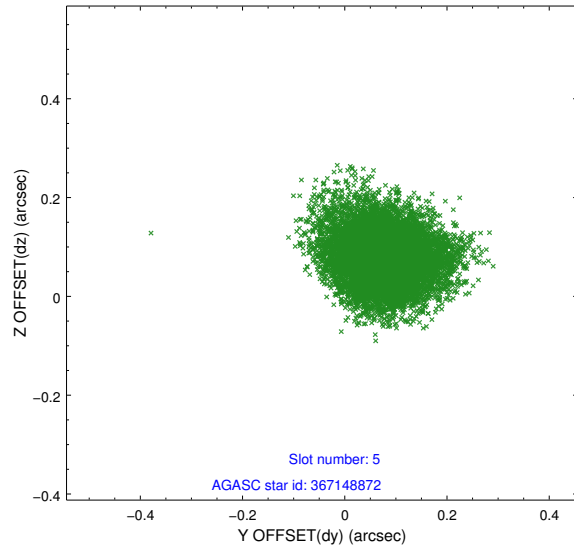
2.4.1 Slot 3



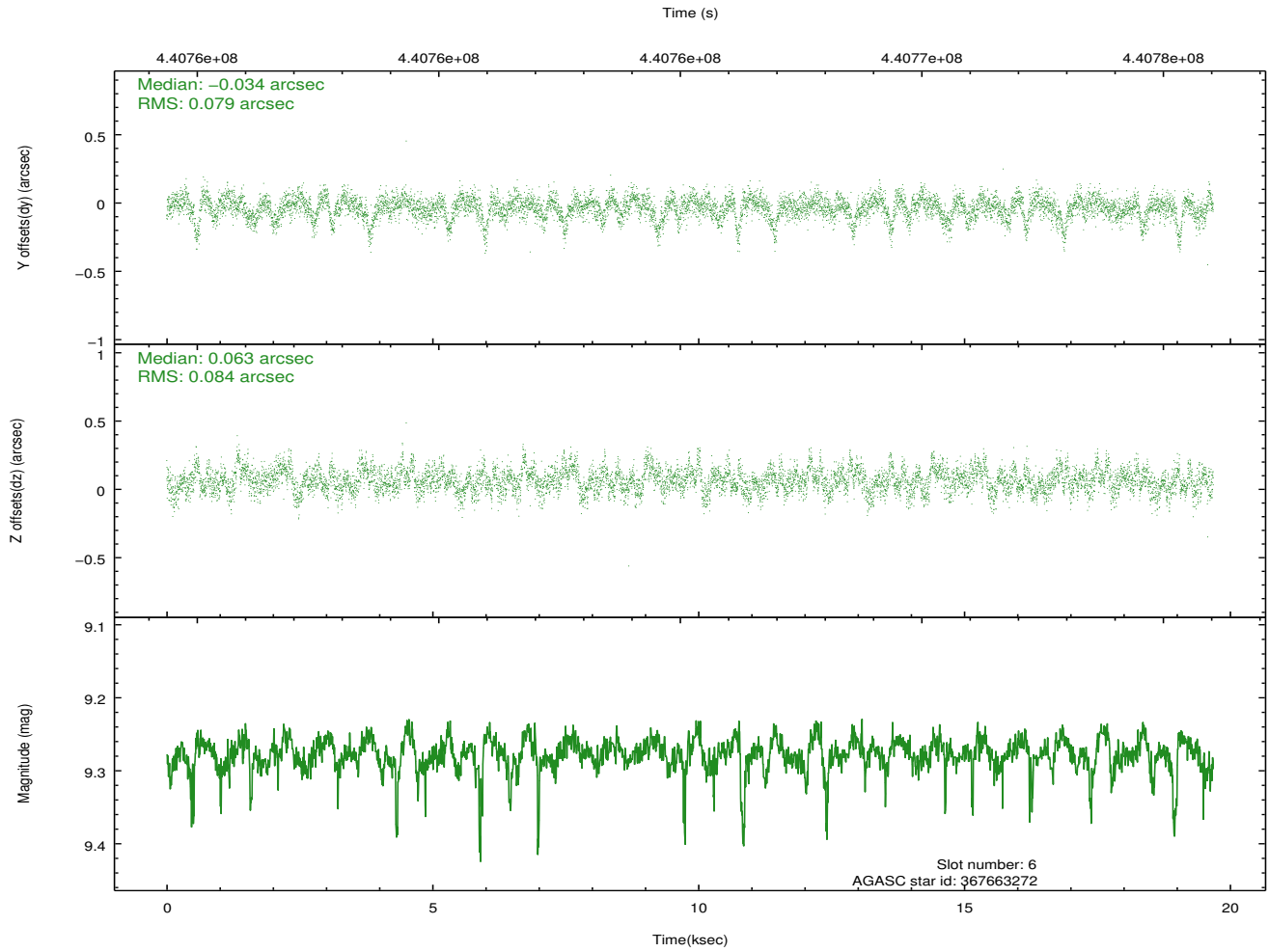
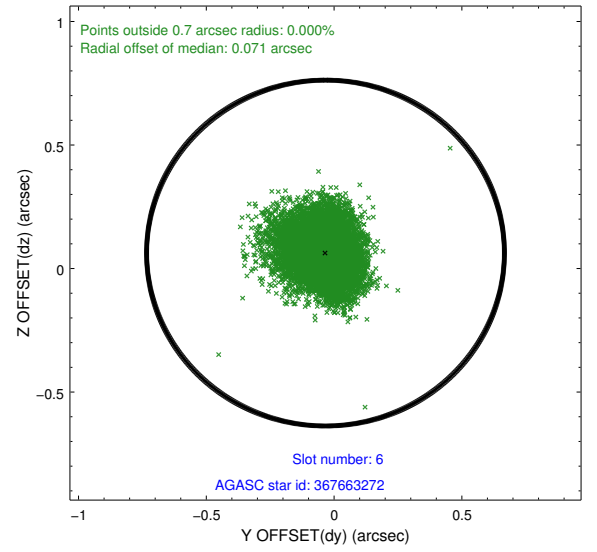
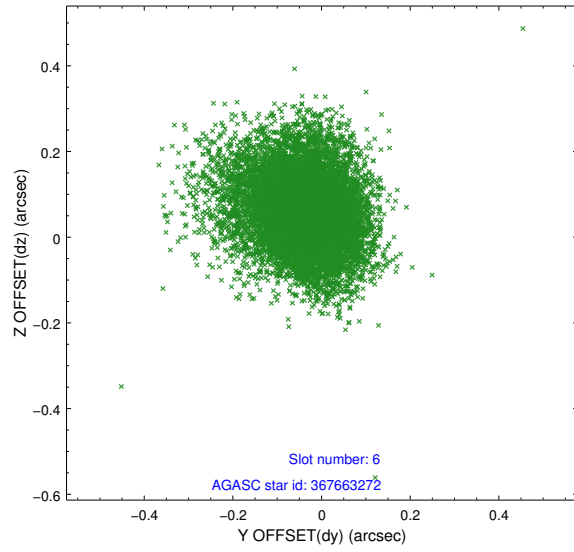
2.4.2 Slot 4



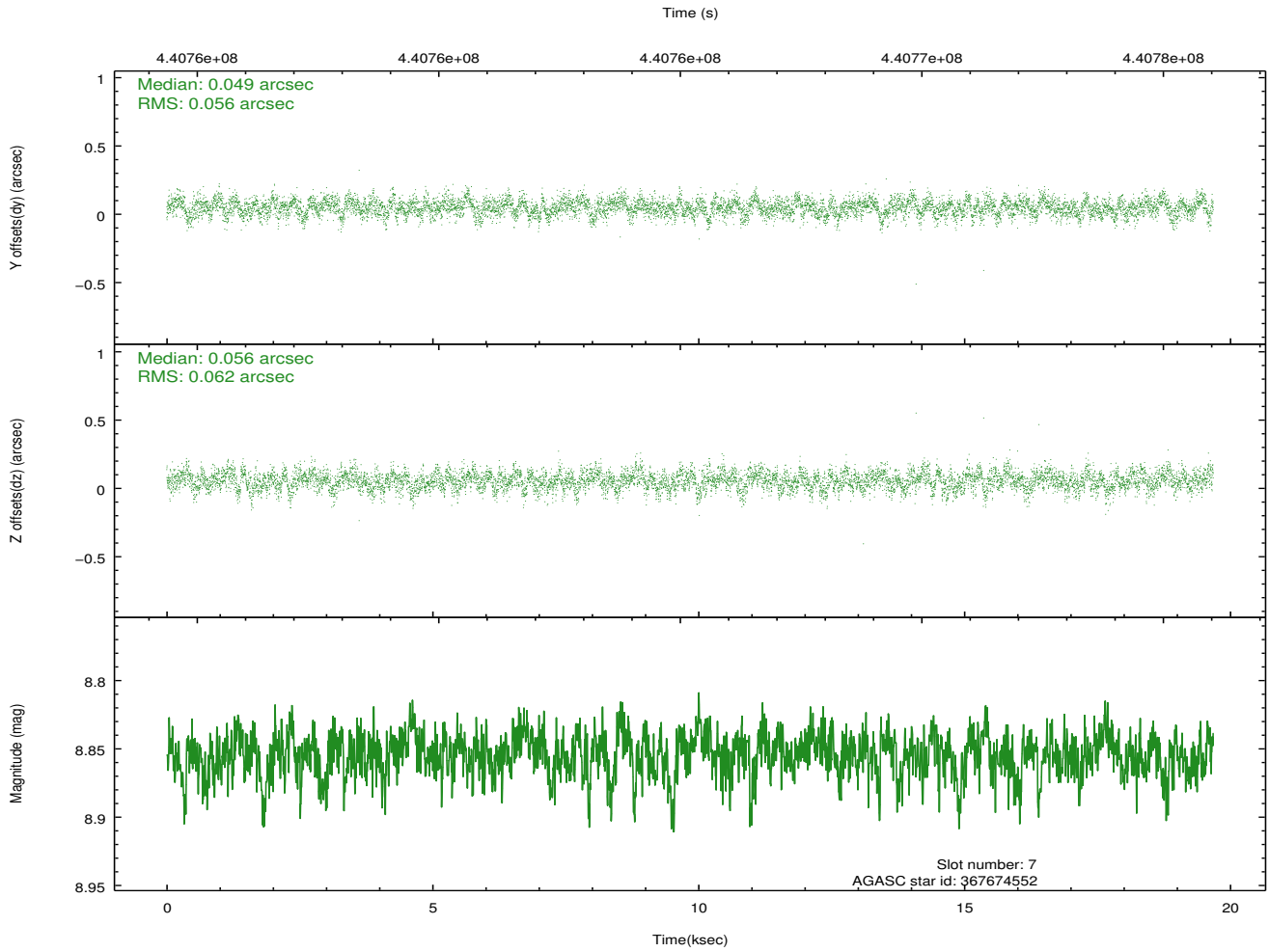
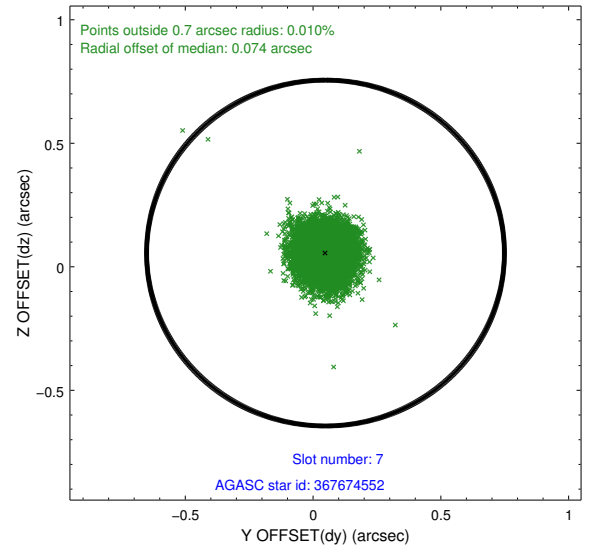
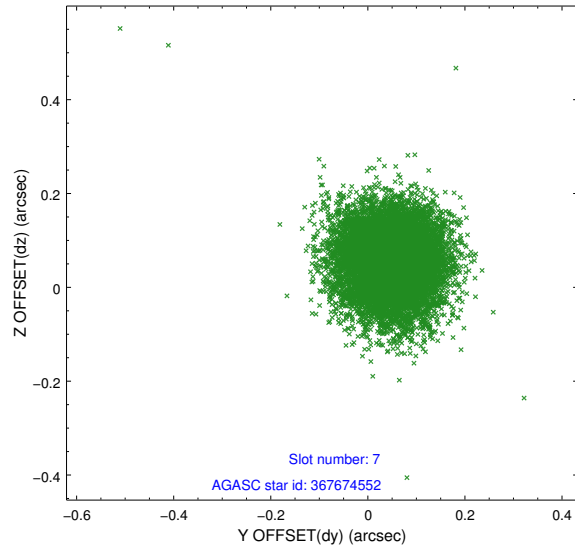
2.4.3 Slot 5



2.4.4 Slot 6

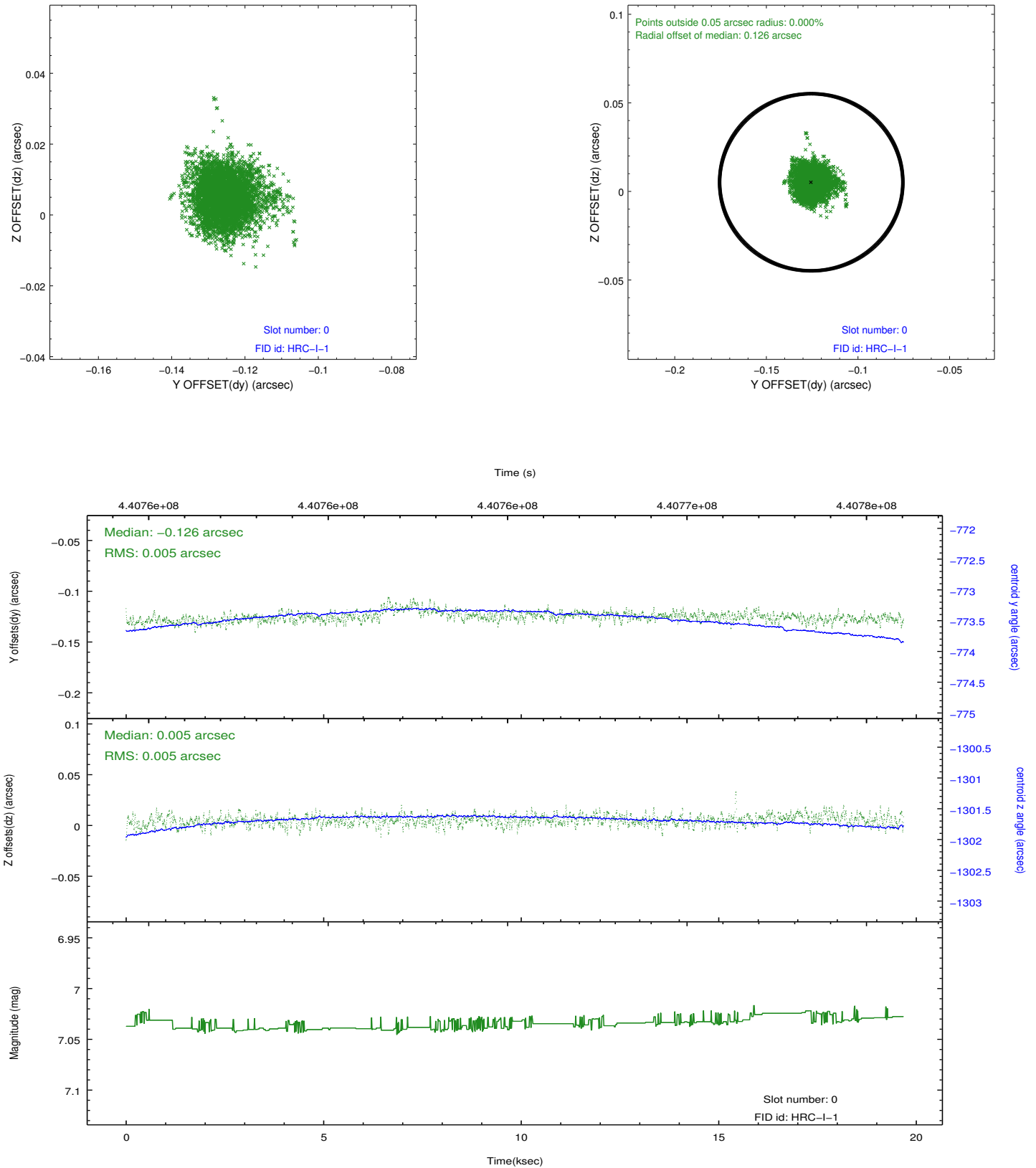


2.4.5 Slot 7

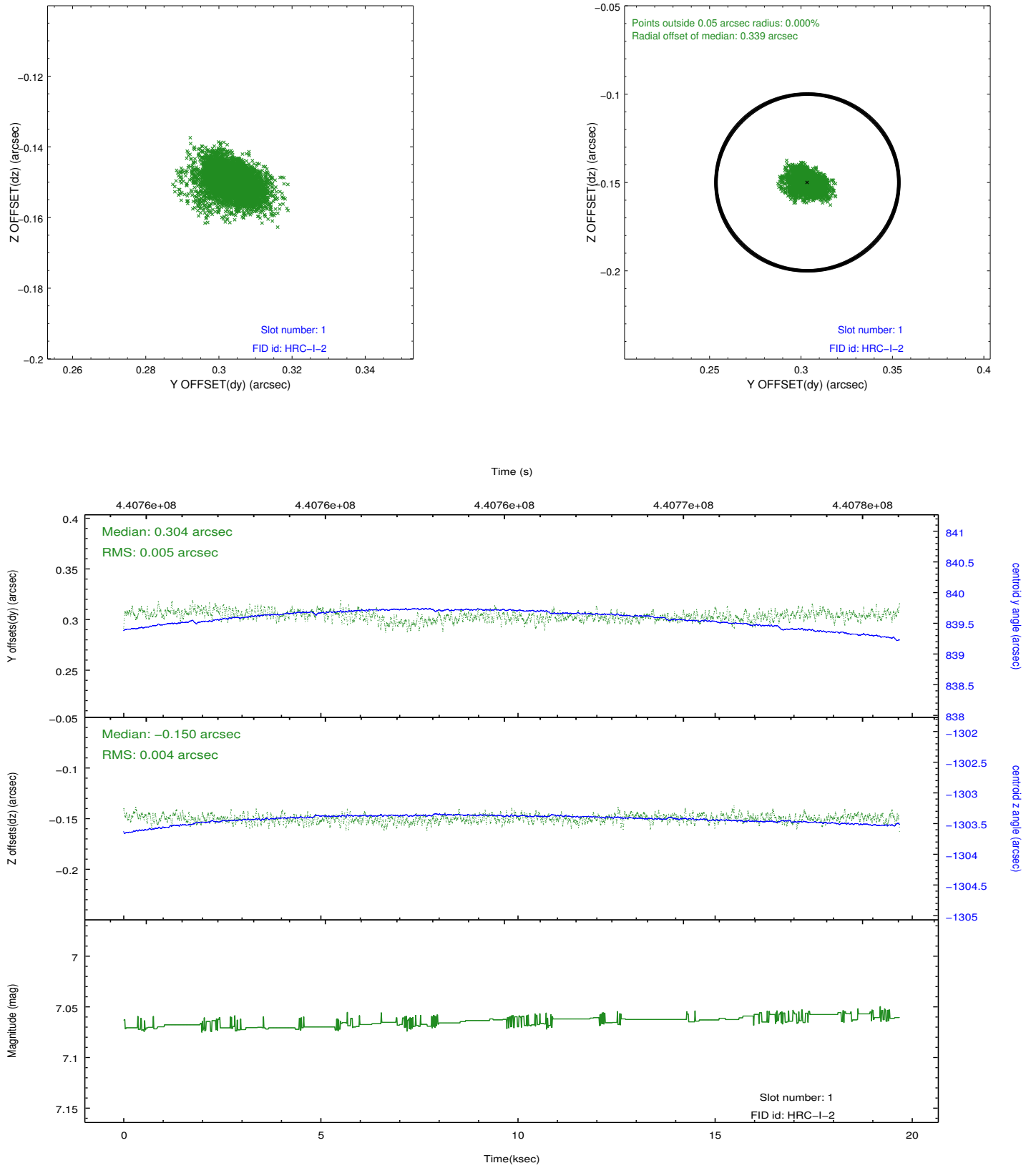


2.5 FID Slots

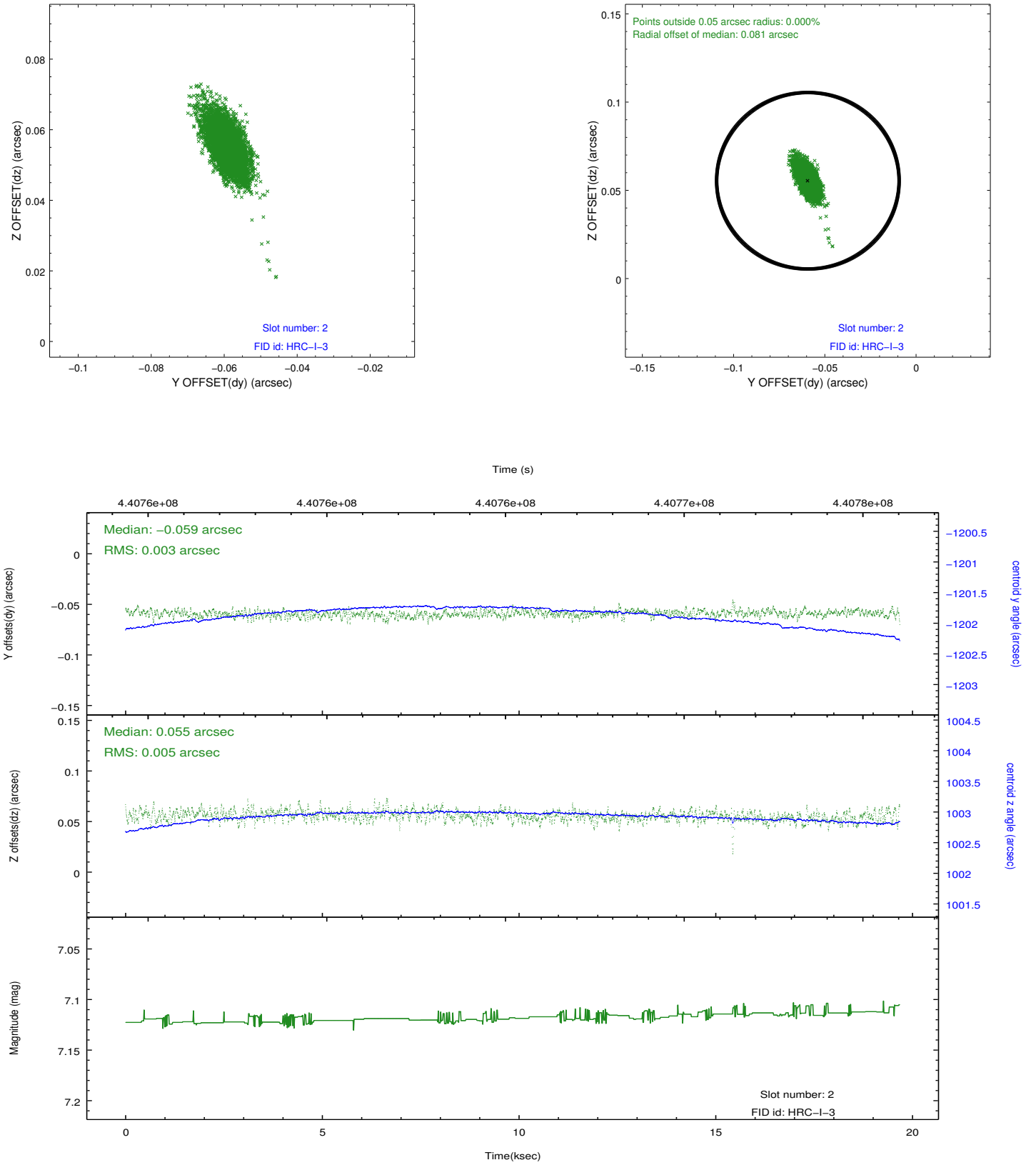
2.5.1 Slot 0



2.5.2 Slot 1



2.5.3 Slot 2



A Summary

A.1 Status

| | |
|----------------------------|-----------------|
| V&V Scientist | Beth Sundheim |
| V&V Date (YYYY-MM-DD) | 2012.08.06 |
| V&V Edition | 1 |
| V&V Disposition and Status | OK |
| V&V Charge Time | 19.681282288849 |

A.2 Comments

Joint proposal with XMM.