

V&V Reference Report

L2 ASCDS Version : 8.4.4

Observation 13640 - L2 Version 1
Chandra X-Ray Center

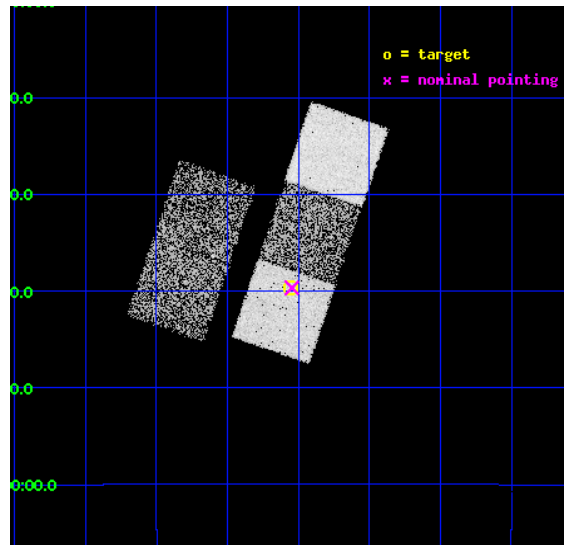
L2 Processing Date : May 18 2012

Contents

1	Front	2
2	OBI	3
2.1	OBI	3
2.1.1	Images	3
2.1.2	Bias	3
2.1.3	Parameters	4
2.1.4	Events	4
2.2	Compared Parameters	5
2.3	Aspect	6
2.4	Star Slots	9
2.4.1	Slot 3	9
2.4.2	Slot 4	10
2.4.3	Slot 5	11
2.4.4	Slot 6	12
2.4.5	Slot 7	13
2.5	FID Slots	14
2.5.1	Slot 0	14
2.5.2	Slot 1	15
2.5.3	Slot 2	16
A	Summary	17
A.1	Status	17
A.2	Comments	17

1 Front

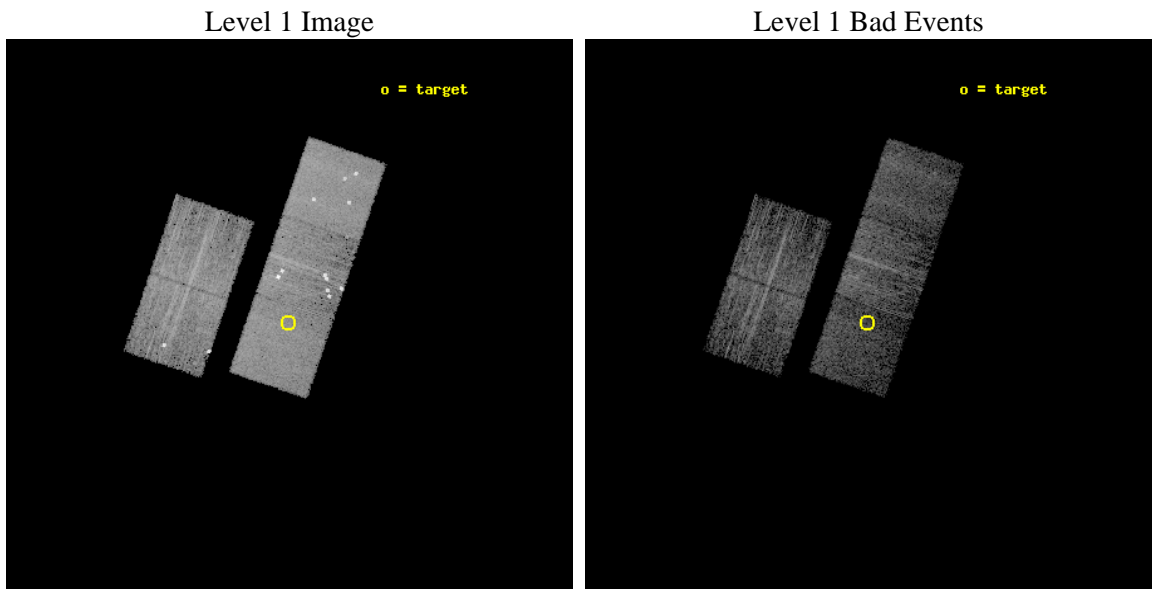
seq_num	200794	Sequence number
obs_id	13640	Observation id
title	LIVING WITH A RED DWARF: MAGNETIC ACTIVITY, XUV IRRADIANCES OF dM STARS - EXOPLANET ATMOSPHERES AND ENVIRONMENT IMPACTS	Proposal titl
observer	Dr. Edward Guinan	Principal investigator
object	NSV 11919	Source name
dtcycle	0	
cycle	P	events from which exps? Prim/Second/Both
ra_targ	290.139583	Observer's specified target RA [deg]
dec_targ	-7.662083	Observer's specified target Dec [deg]
ra_nom	290.13656153254	Nominal RA [deg]
dec_nom	-7.6612666386692	Nominal Dec [deg]
roll_nom	108.86335283495	Nominal Roll [deg]
revision	1	Processing version of data
ontime	5061.2393816113	Sum of GTIs [s]
livetime	4995.1105630604	Livetime [s]
ontime2	5061.0752215981	Sum of GTIs [s]
ontime3	5061.1162616014	Sum of GTIs [s]
ontime5	5061.198341608	Sum of GTIs [s]
ontime6	5061.1573016047	Sum of GTIs [s]
ontime7	5061.2393816113	Sum of GTIs [s]
l2events	55937	Number of level 2 events



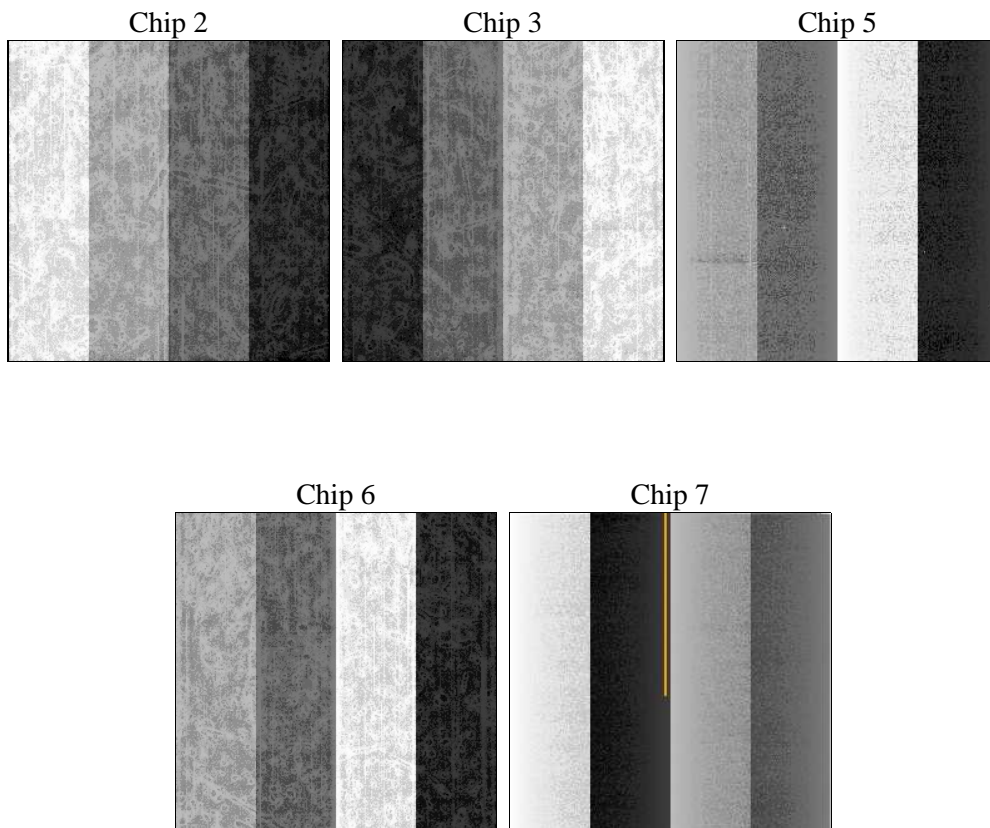
2 OBI

2.1 OBI

2.1.1 Images



2.1.2 Bias



2.1.3 Parameters

obi_num	2	Obi number	sched_exp_time	5000.838000	[s] Scheduled observation exposure time
ascdsver	8.4.4	Processing system revision	ontime	5061.2393816113	Sum of GTIs [s]
caldsver	4.4.9	 	ontime2	5061.0752215981	Sum of GTIs [s]
date	2012-05-18T21:53:23	Date and time of file creation	ontime3	5061.1162616014	Sum of GTIs [s]
revision	1	Processing version of data	ontime5	5061.198341608	Sum of GTIs [s]
			ontime6	5061.1573016047	Sum of GTIs [s]
			ontime7	5061.2393816113	Sum of GTIs [s]
			l1events	242174	Number of level 1 events

2.1.4 Events

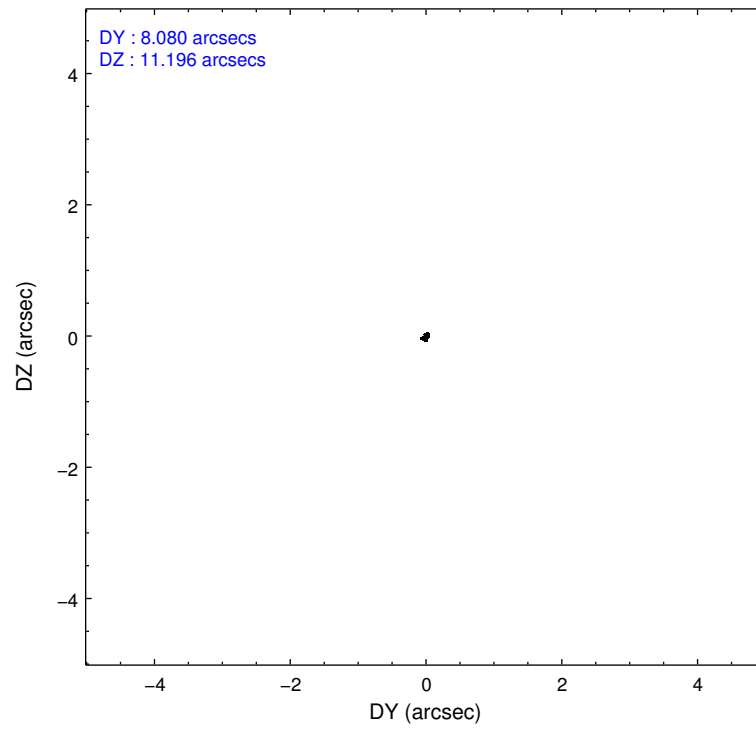
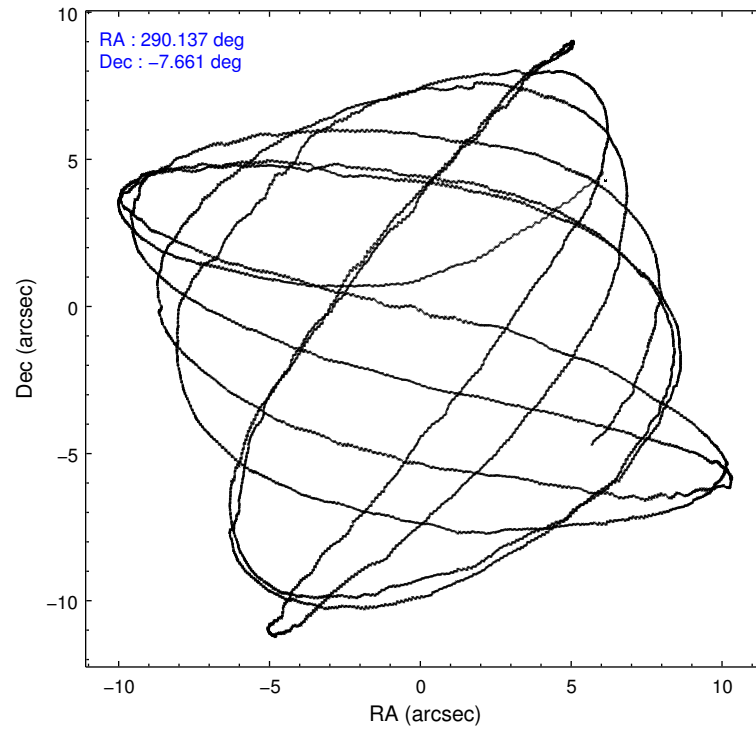
	ccd 2	ccd 3	ccd 5	ccd 6	ccd 7
level 1 events	41592	41891	60071	54686	43934
rejected events	36507	34874	29242	37467	23588
rejected %	87%	83%	48%	68%	53%

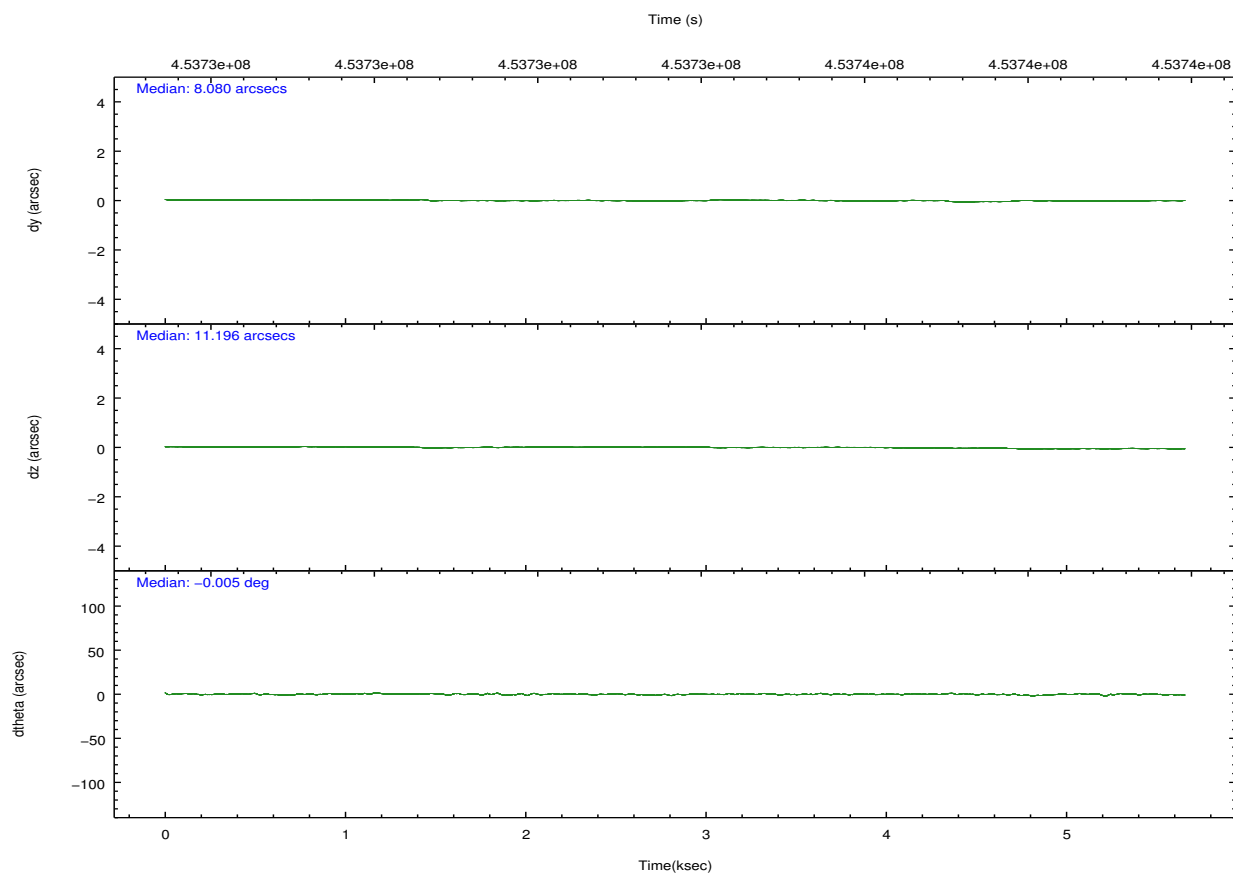
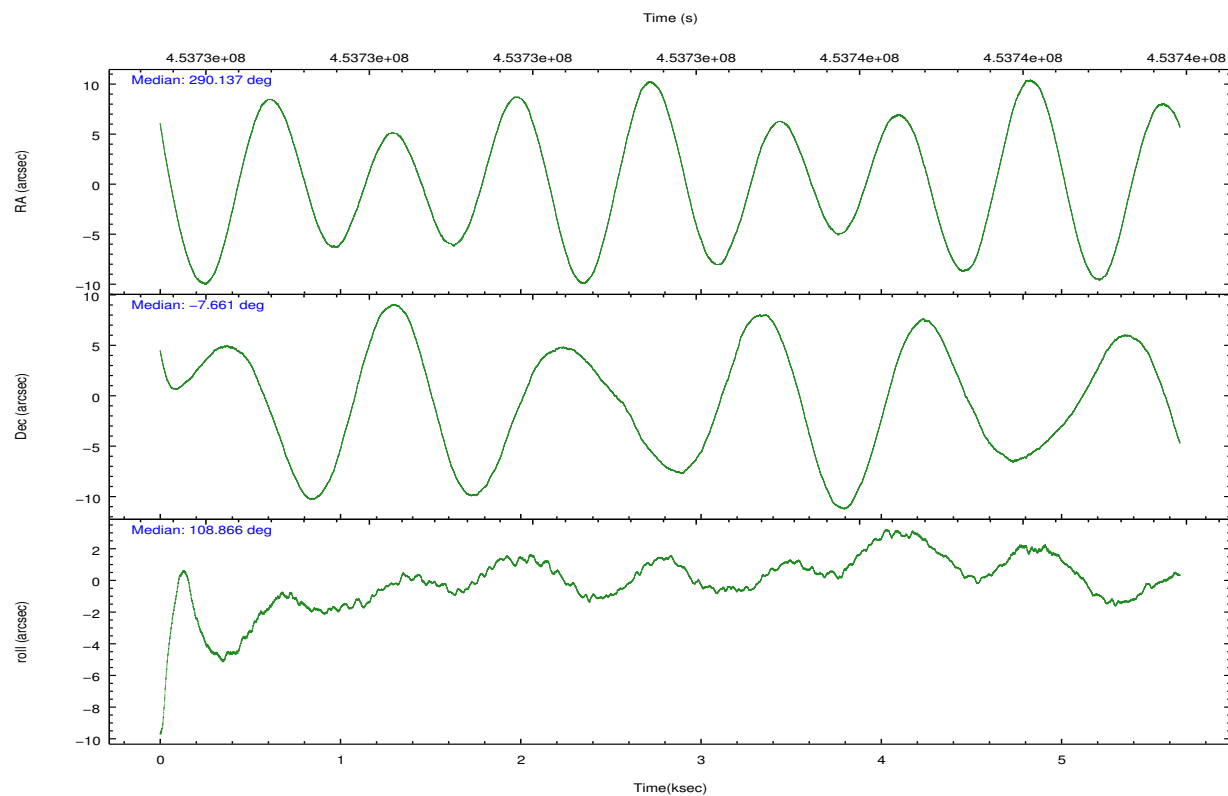
	ccd 2	ccd 3	ccd 5	ccd 6	ccd 7
grade 0 events	2177	3046	5847	8207	1955
	5%	7%	9%	15%	4%
grade 1 events	36	21	191	62	84
	0%	0%	0%	0%	0%
grade 2 events	1266	2465	9058	7377	4750
	3%	5%	15%	13%	10%
grade 3 events	399	390	1280	397	1800
	0%	0%	2%	0%	4%
grade 4 events	489	397	1284	431	1798
	1%	0%	2%	0%	4%
grade 5 events	1317	1444	3989	1603	4257
	3%	3%	6%	2%	9%
grade 6 events	765	729	13396	828	10063
	1%	1%	22%	1%	22%
grade 7 events	35143	33399	25026	35781	19227
	84%	79%	41%	65%	43%

2.2 Compared Parameters

Parameter	Planned	Actual	Parameter	Planned	Actual
Instrument	ACIS	ACIS	Obspar format version number	7	7
Detector	ACIS-23567	ACIS-23567	Obspar file type	PREDICTED	ACTUAL
Grating	NONE	NONE	Obspar update status	NONE	UPDATED
Data mode	FAINT	FAINT	Number of optional ACIS chips dropped	0	0
Observation mode	POINTING	POINTING	On-chip summing requested	N	N
[deg] Pointing RA	290.157648	290.1365615325353	Subarray requested	NONE	NONE
[deg] Pointing Dec	-7.679072	-7.661266638669226	Alternating exposures requested	N	N
[deg] Pointing Roll	108.709552	108.8633528349488	[s] Primary exposure time	0.000000	3.1
[mm] SIM focus pos	-0.684267	-0.6828225247311905			
[mm] SIM defocus	0	0.001444936568705701			
[mm] SIM translation stage pos	-190.132523	-190.1400660498719			
[mm] SIM translation stage offset	0	0.00754346686406393			
[s] Observation start time (MET)	453731664.184000	453730342.94244			
Observation start date	2012-05-18T12:33:18	2012-05-18T12:12:22			
[s] Observation end time (MET)	453736665.184000	453736891.15529			
Observation end date	2012-05-18T13:56:39	2012-05-18T14:01:31			
Read mode	TIMED	TIMED			

2.3 Aspect



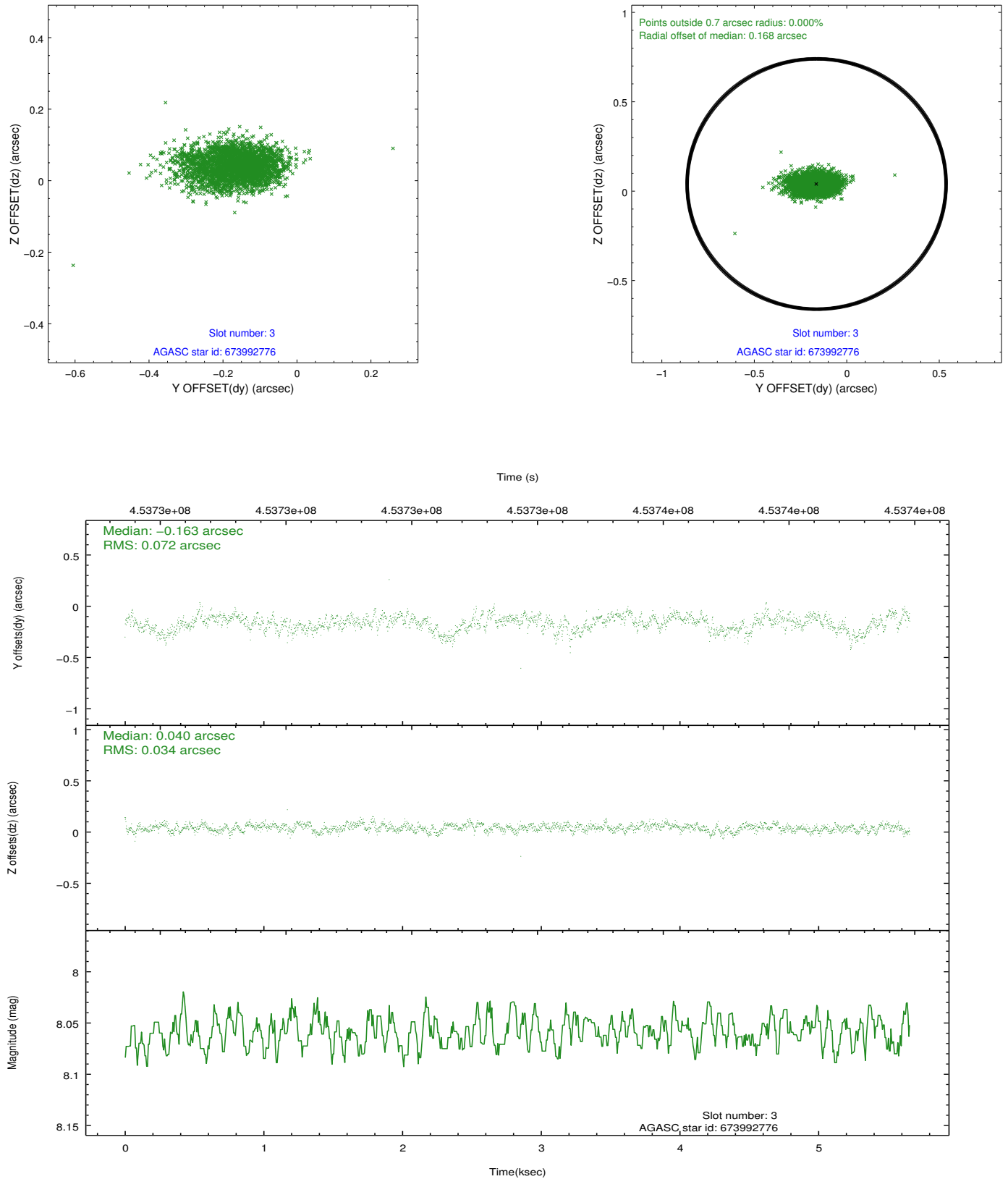


Slot Statistics

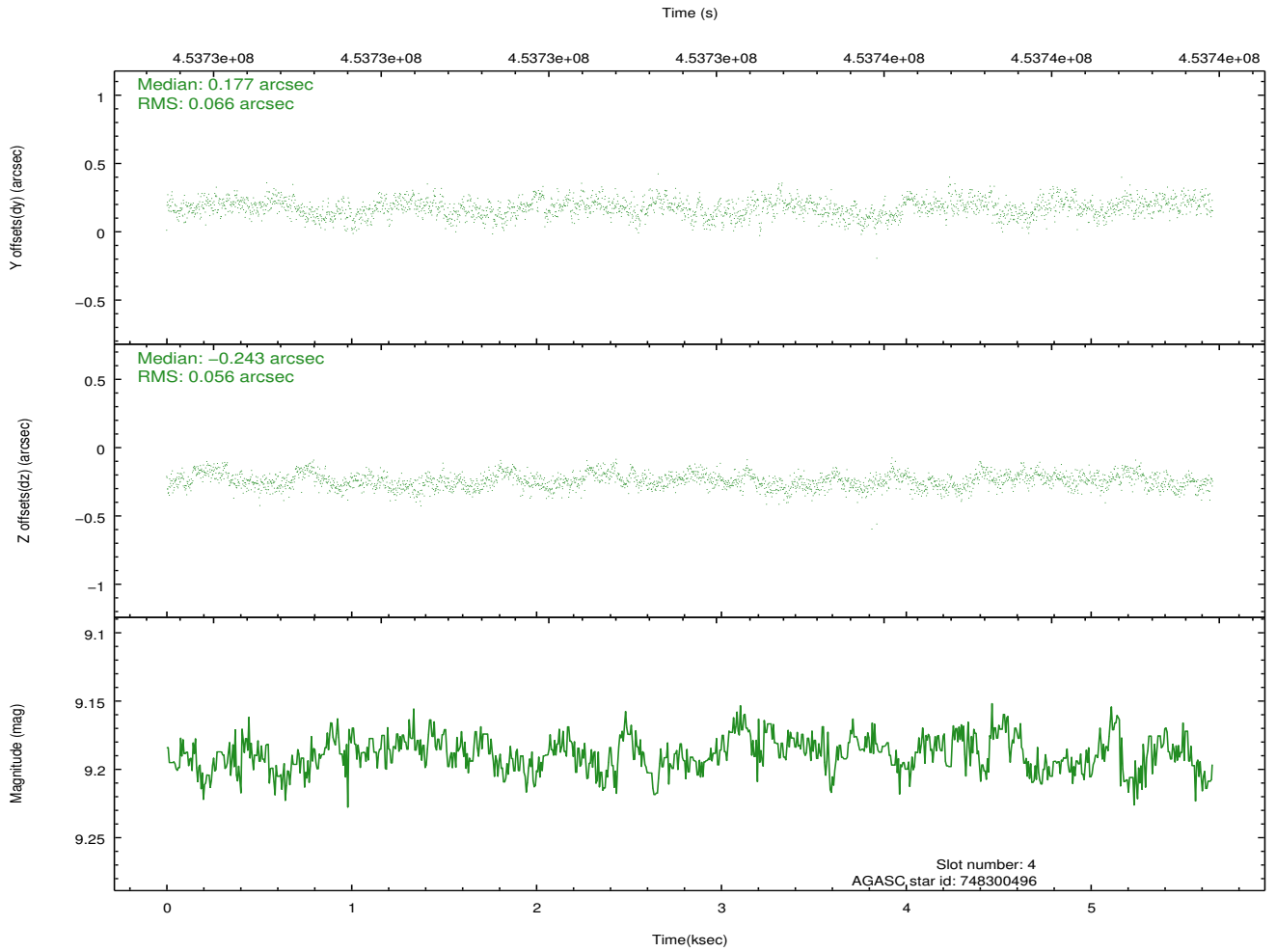
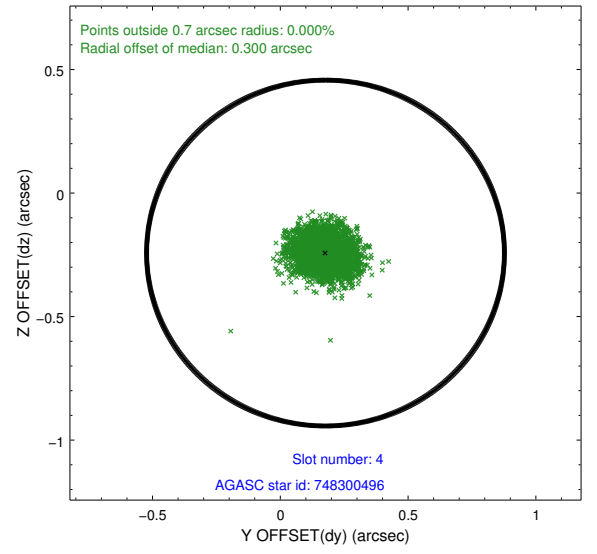
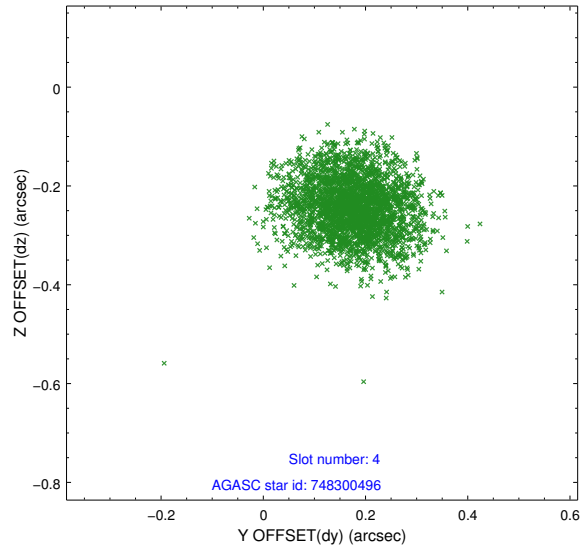
slot	status	id	mag	n_pts	med_dy	med_dz	dr1	dr2	ra	dec	mean_y	mean_z
0	FID	ACIS-S-1	7.06	1380	0.087	-0.106	0.007	0.013	0.000000	0.000000	935.26	-1728.20
1	FID	ACIS-S-5	7.11	1380	-0.136	0.047	0.006	0.011	0.000000	0.000000	-1813.36	168.42
2	FID	ACIS-S-6	7.21	1380	0.028	0.070	0.007	0.011	0.000000	0.000000	399.62	813.59
3	GUIDE	673992776	8.06	2759	-0.163	0.040	0.081	0.143	289.863746	-7.202220	1960.79	444.28
4	GUIDE	748300496	9.19	2759	0.177	-0.243	0.094	0.149	290.142361	-8.269258	-1994.43	733.23
5	GUIDE	748300696	7.12	2761	0.037	0.252	0.092	0.158	290.586729	-8.201071	-2272.23	-844.40
6	GUIDE	748301856	7.83	2761	0.044	0.001	0.089	0.152	290.170998	-8.220619	-1862.98	580.20
7	GUIDE	748292232	9.51	2759	-0.085	-0.055	0.117	0.194	289.646469	-7.525859	1105.53	1551.61

2.4 Star Slots

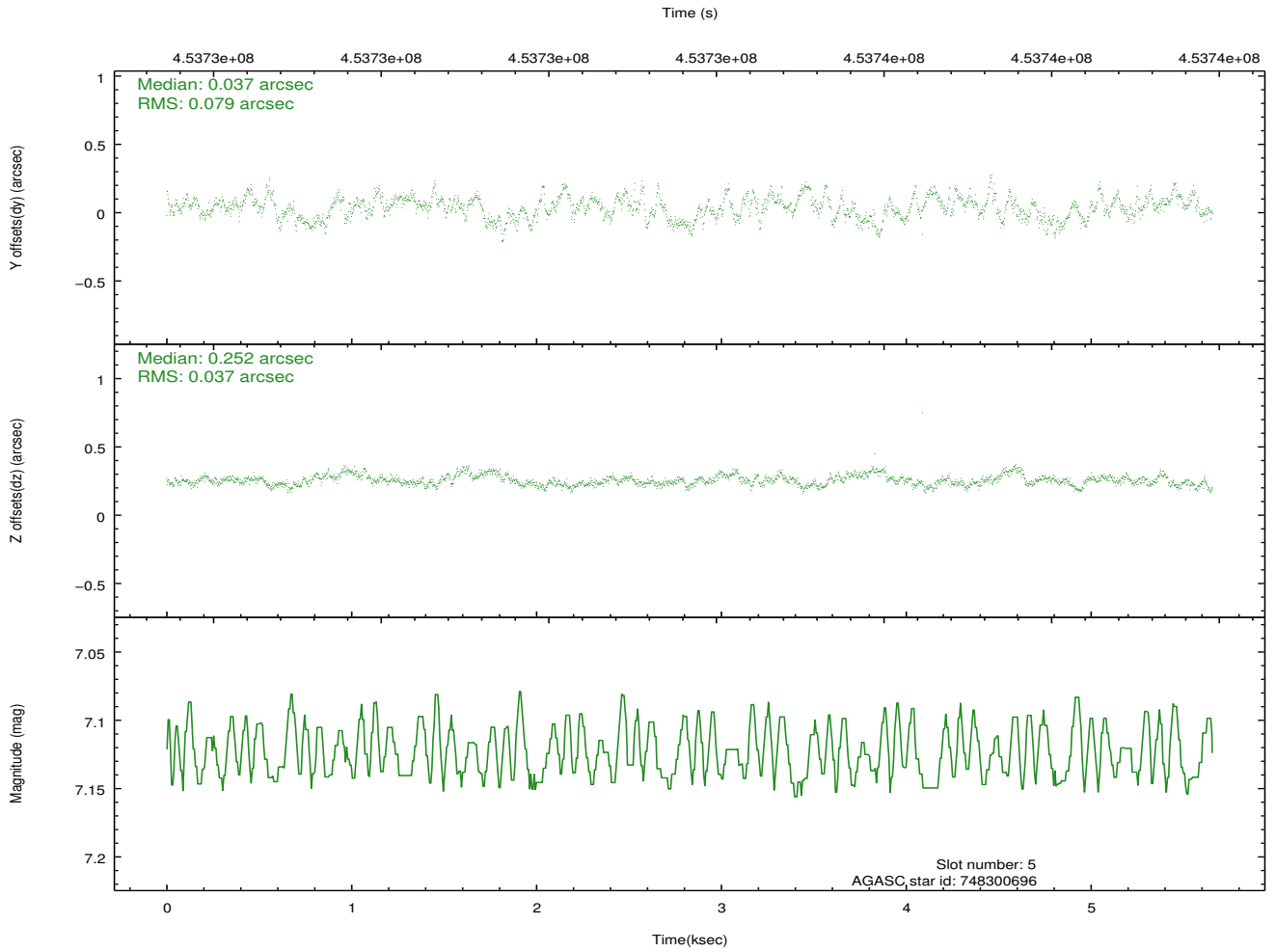
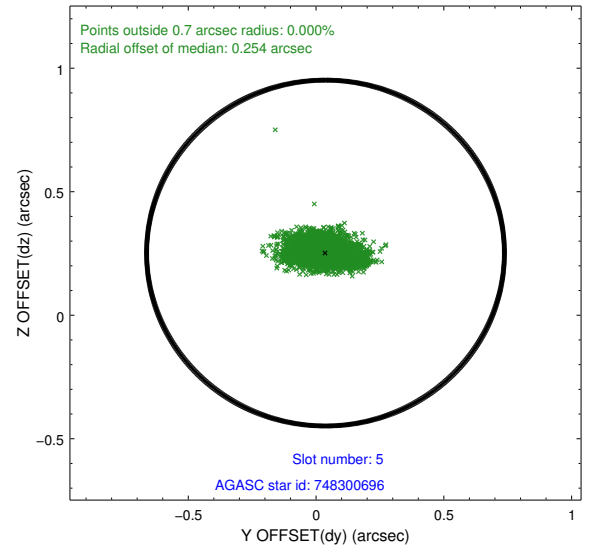
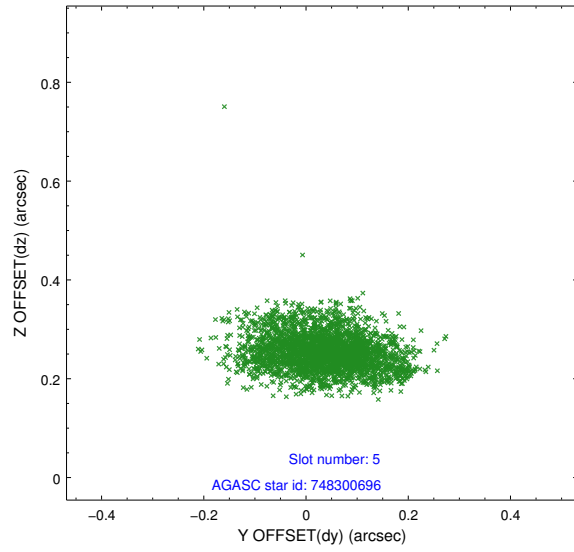
2.4.1 Slot 3



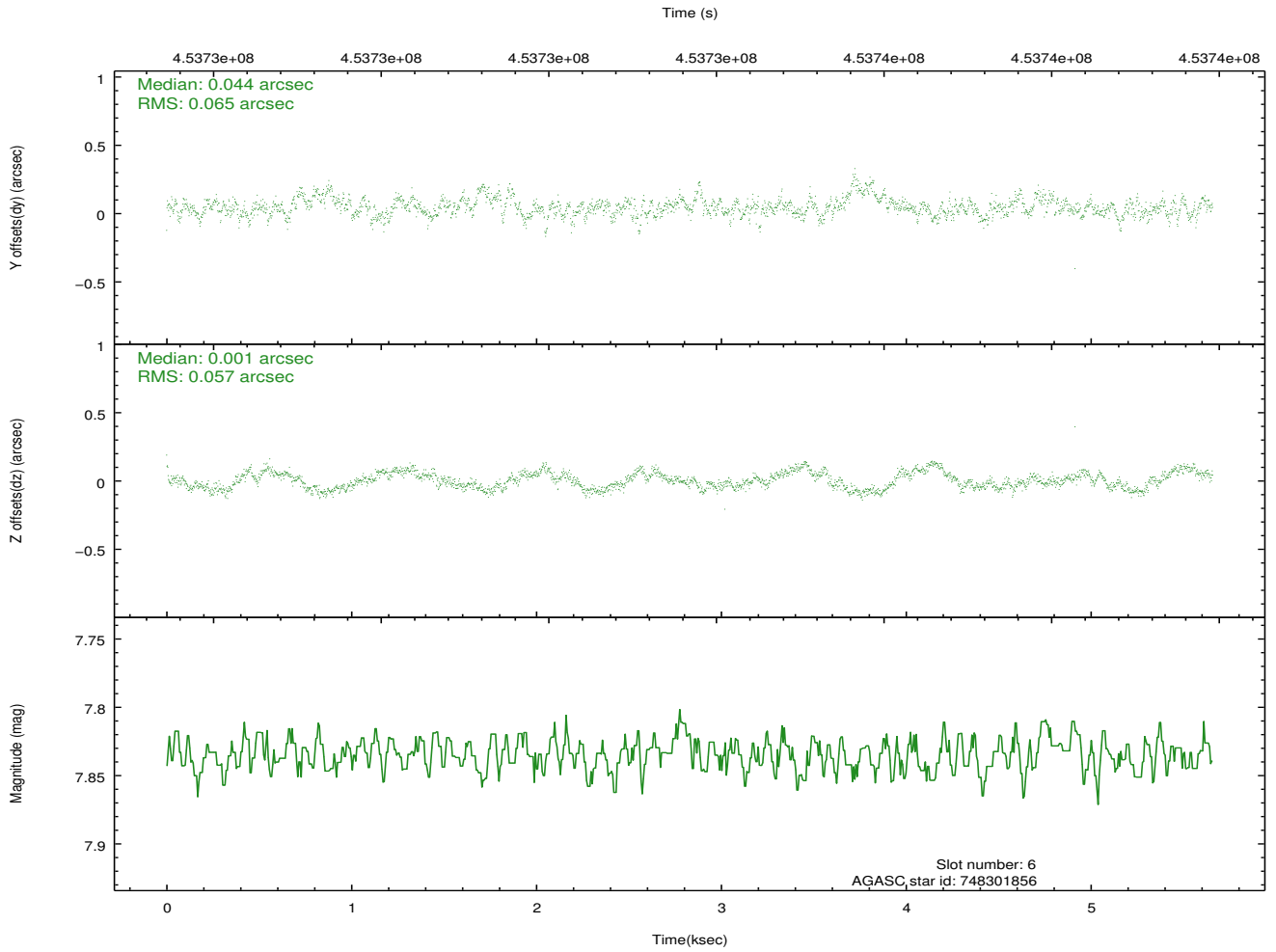
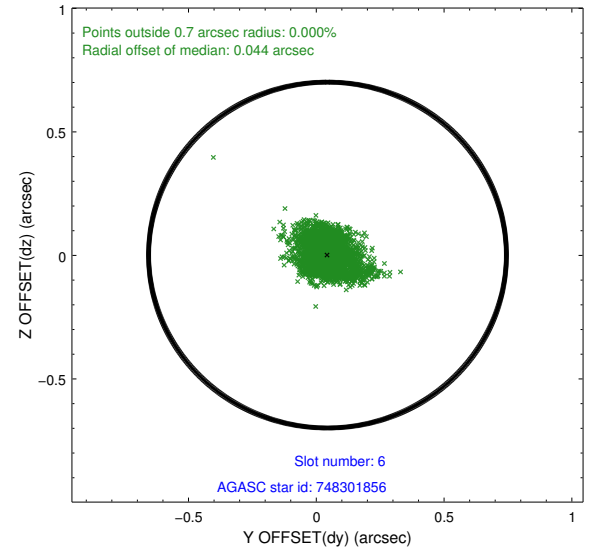
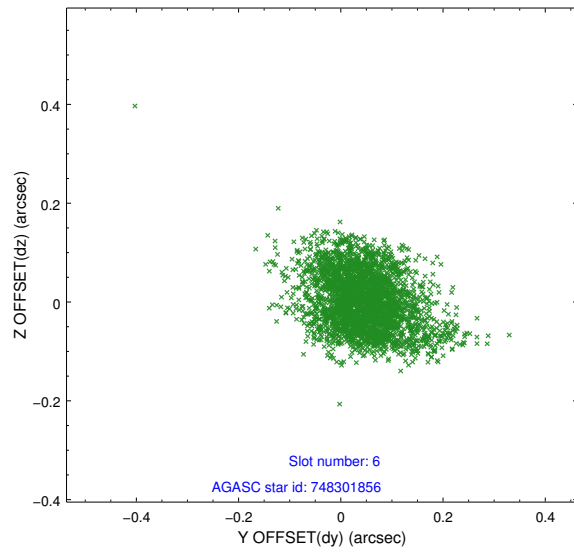
2.4.2 Slot 4



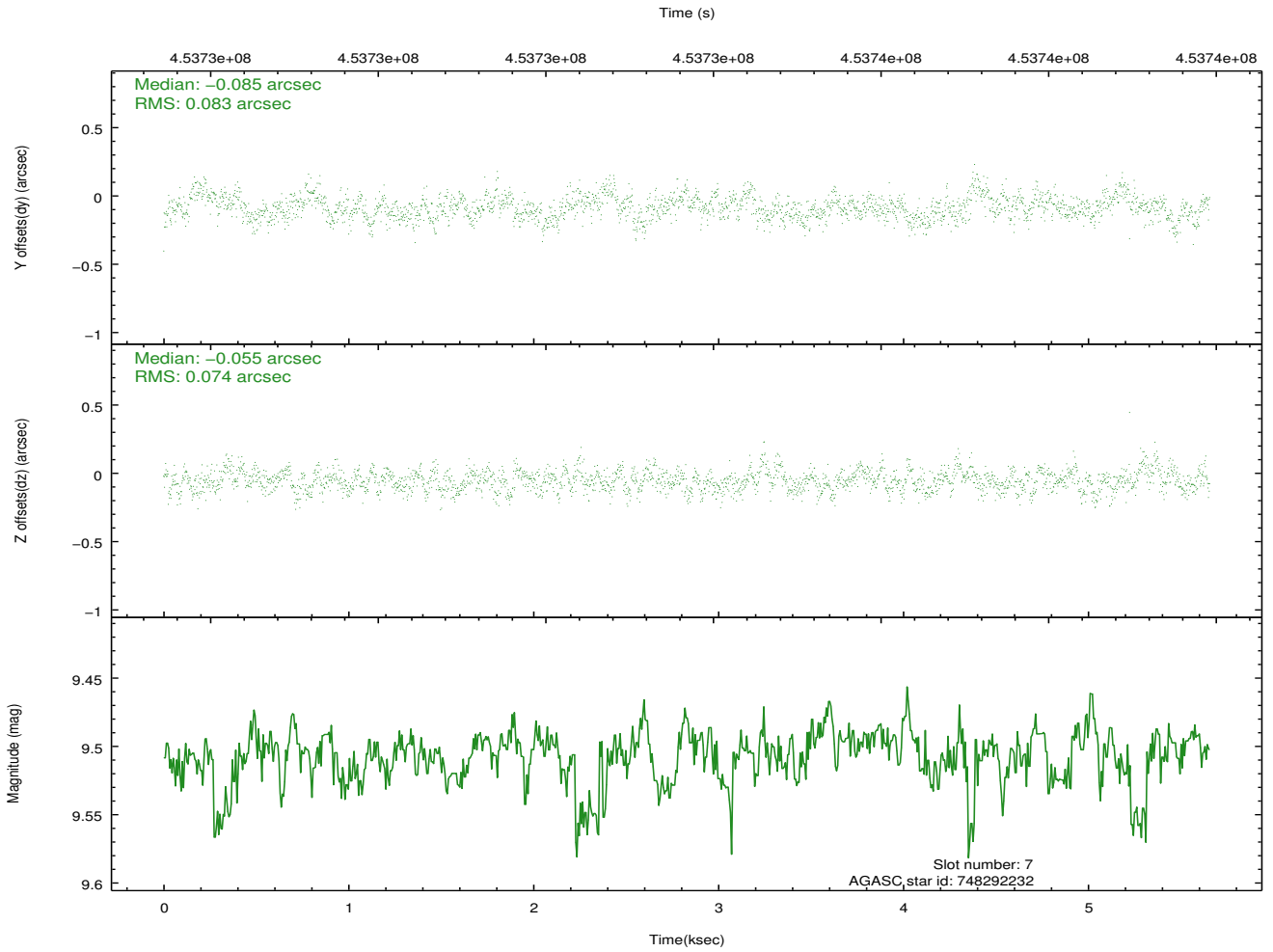
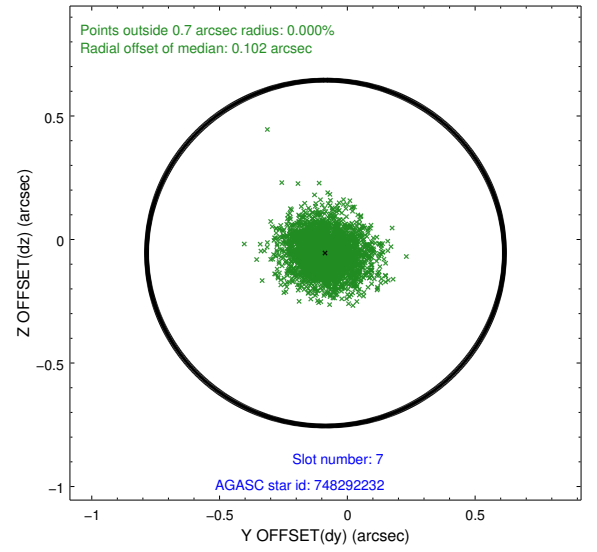
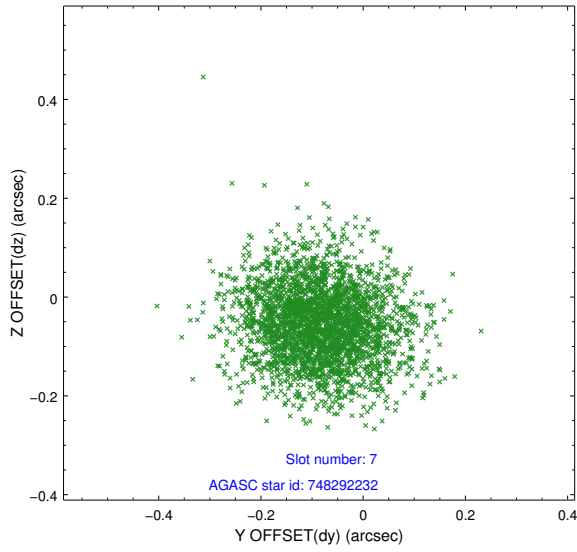
2.4.3 Slot 5



2.4.4 Slot 6

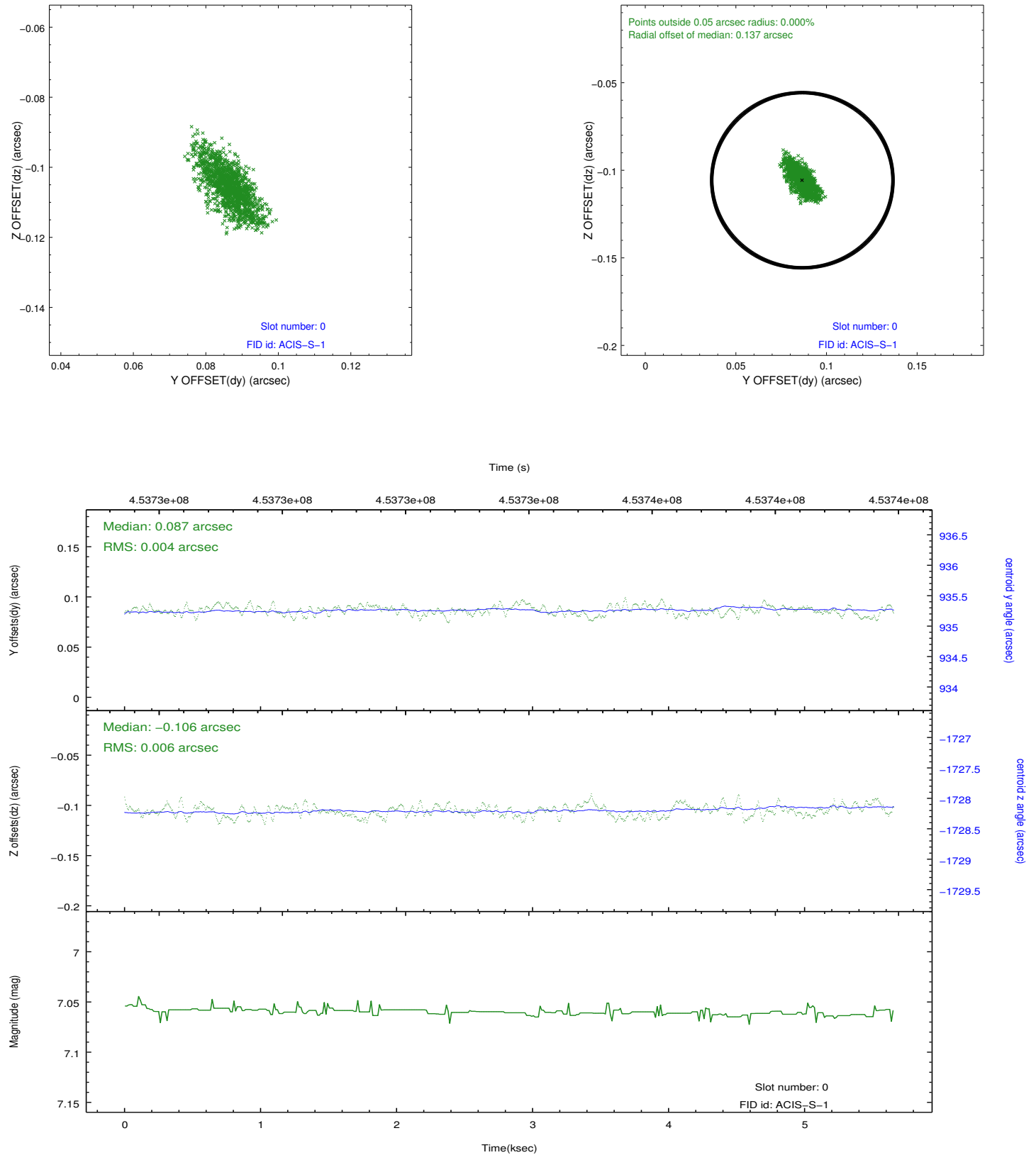


2.4.5 Slot 7

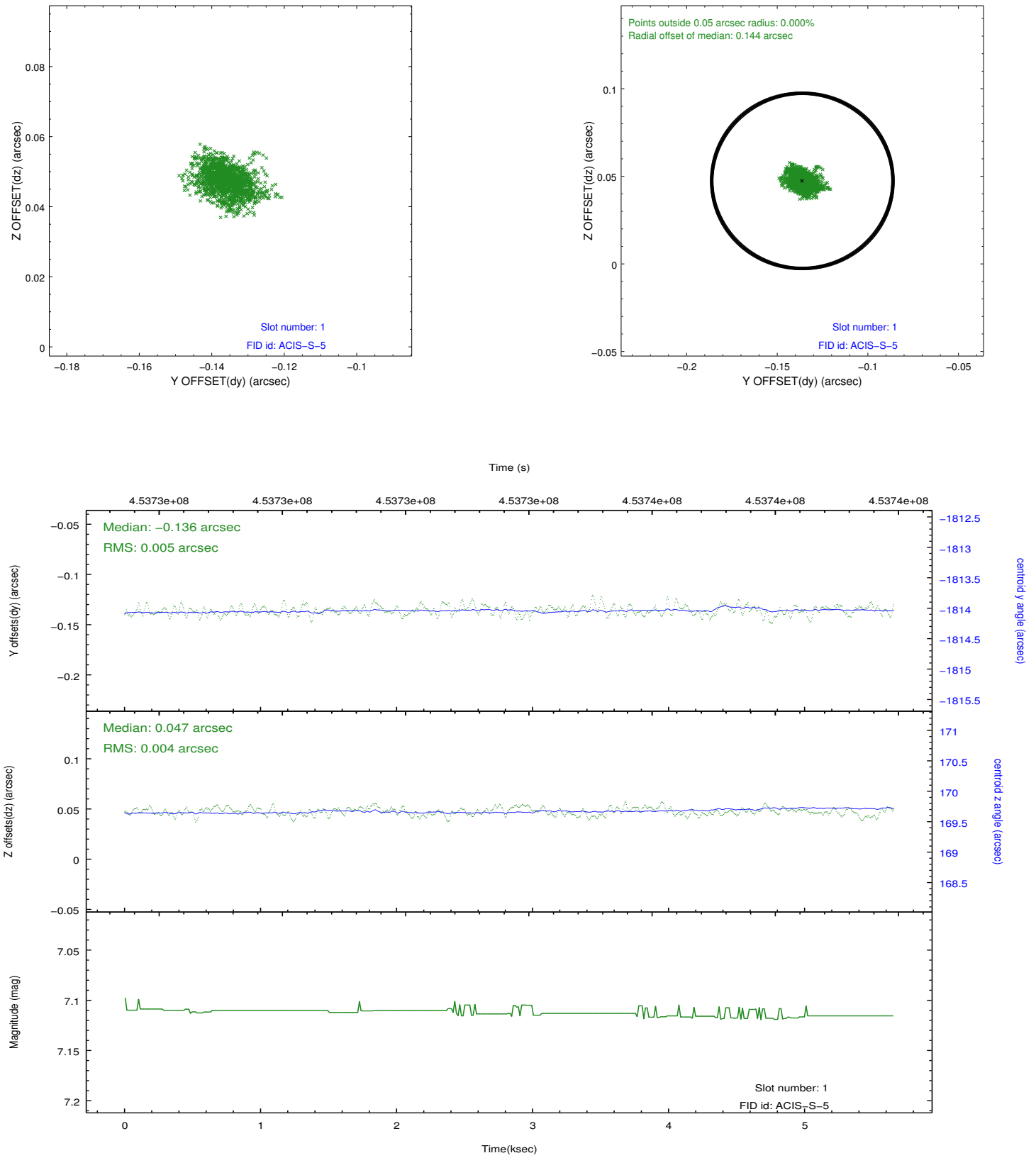


2.5 FID Slots

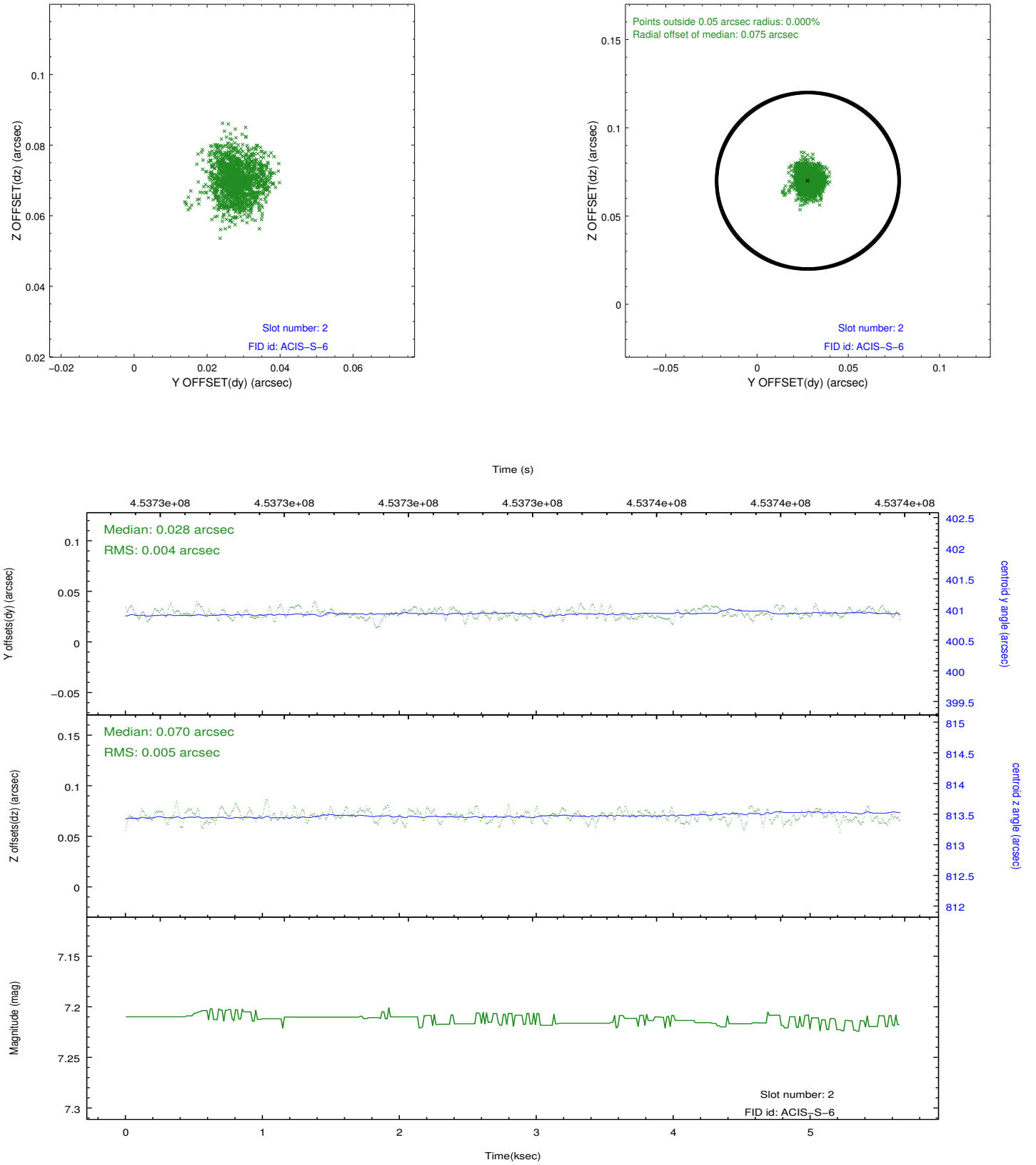
2.5.1 Slot 0



2.5.2 Slot 1



2.5.3 Slot 2



A Summary

A.1 Status

V&V Scientist	Joy Nichols
V&V Date (YYYY-MM-DD)	2012.05.21
V&V Edition	1
V&V Disposition and Status	OK
V&V Charge Time	5.0612393816113

A.2 Comments